

1. Duty Cycle

1.1 Test Result

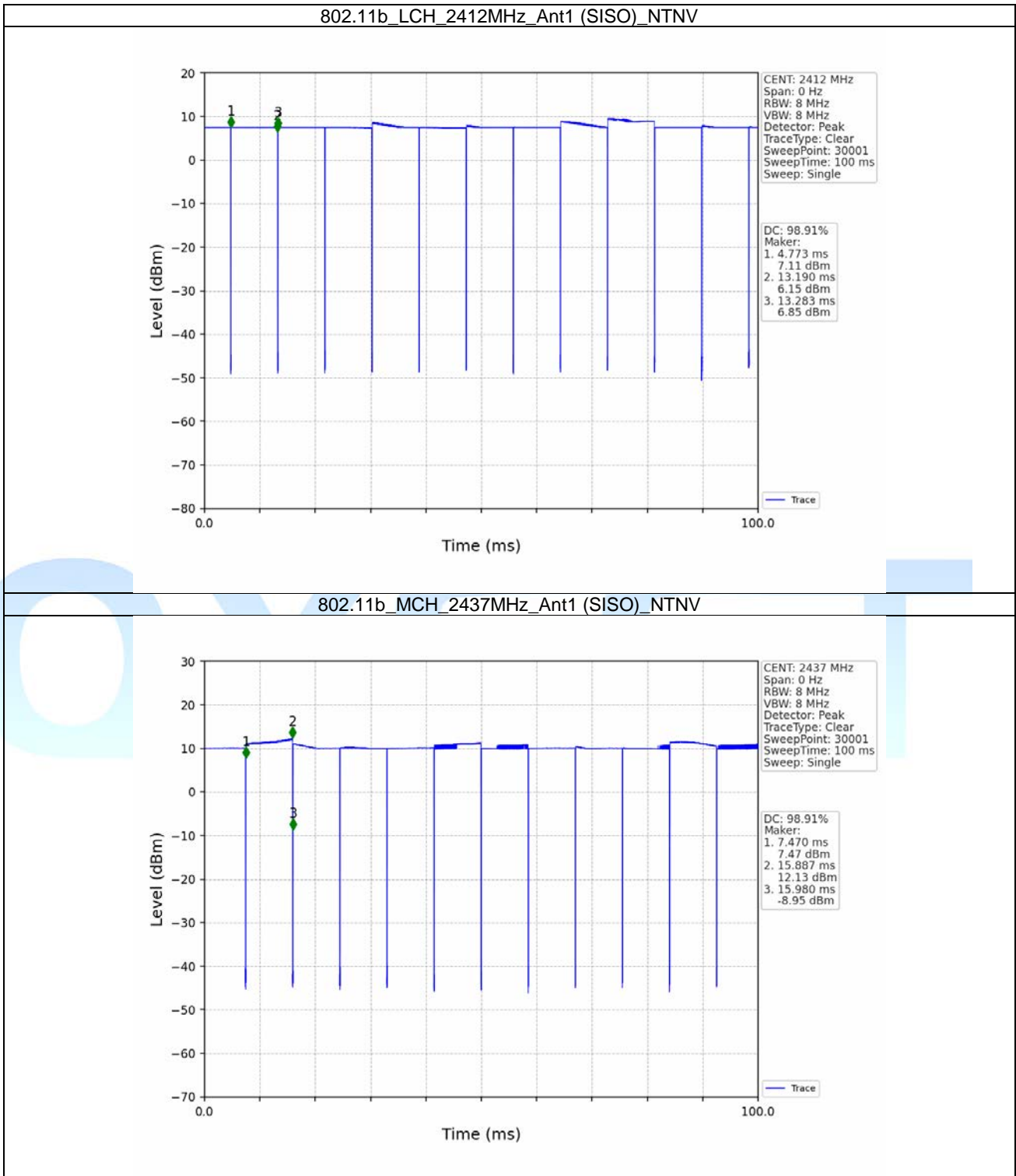
1.1.1 Ant1

Ant1									
Mode	TX Type	Frequency (MHz)	RU	RU Pos	T_on (ms)	Period (ms)	Duty Cycle (%)	Duty Cycle Correction Factor (dB)	Max. DC Variation (%)
802.11b	SISO	2412	/	/	8.417	8.510	98.91	0.05	0.04
		2437	/	/	8.417	8.510	98.91	0.05	0.04
		2462	/	/	8.416	8.510	98.90	0.05	0.04
802.11g	SISO	2412	/	/	1.397	1.496	93.38	0.30	0.03
		2437	/	/	1.397	1.496	93.38	0.30	0.03
		2462	/	/	1.397	1.495	93.44	0.29	0.03
802.11n (HT20)	MIMO	2412	/	/	1.309	1.408	92.97	0.32	0.06
		2437	/	/	1.309	1.408	92.97	0.32	0.03
		2462	/	/	1.307	1.407	92.89	0.32	0.03
802.11ax (HEW20)	MIMO	2412	RU242	Left	1.022	1.121	91.17	0.40	0.03
		2437	RU242	Left	1.489	1.508	98.74	0.06	0.07
		2462	RU242	Left	1.488	1.507	98.74	0.06	0.03

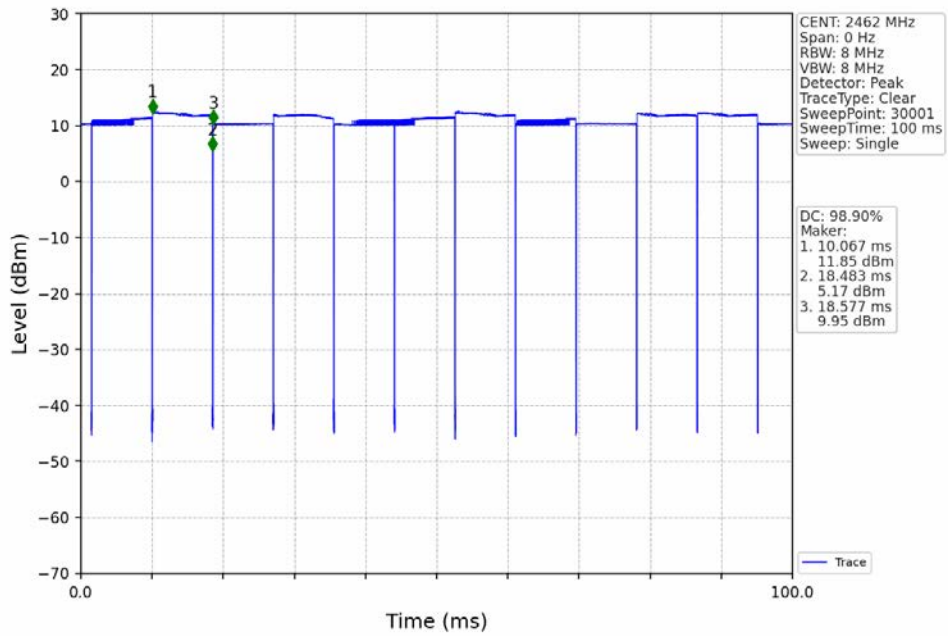


1.2 Test Graph

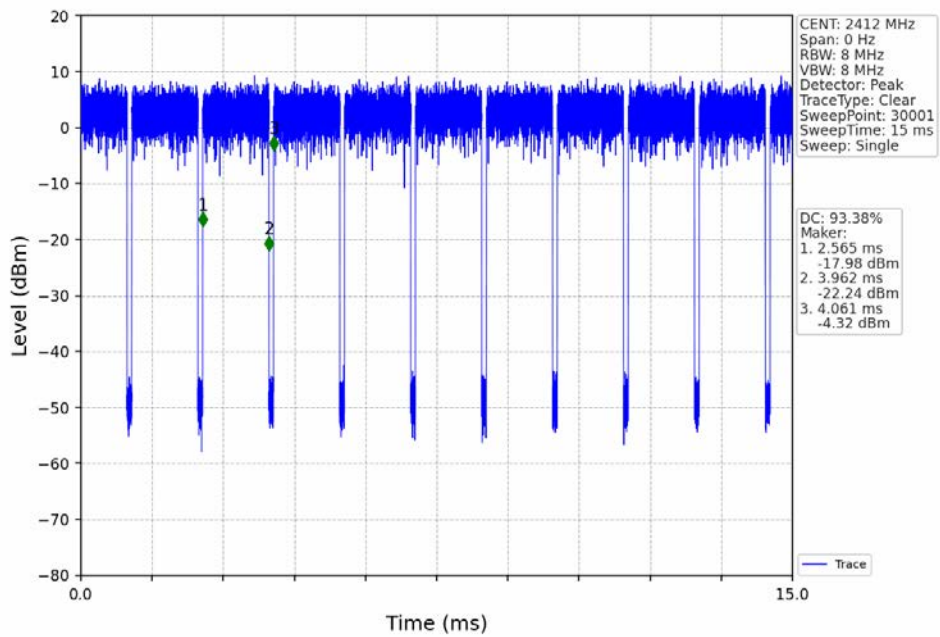
1.2.1 Ant1



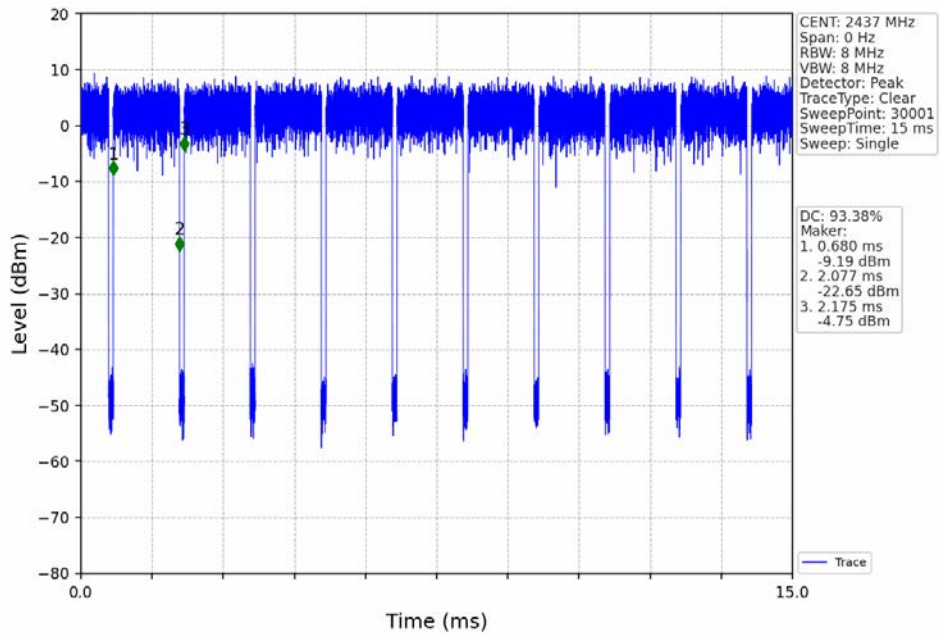
802.11b_HCH_2462MHz_Ant1 (SISO)_NTNV



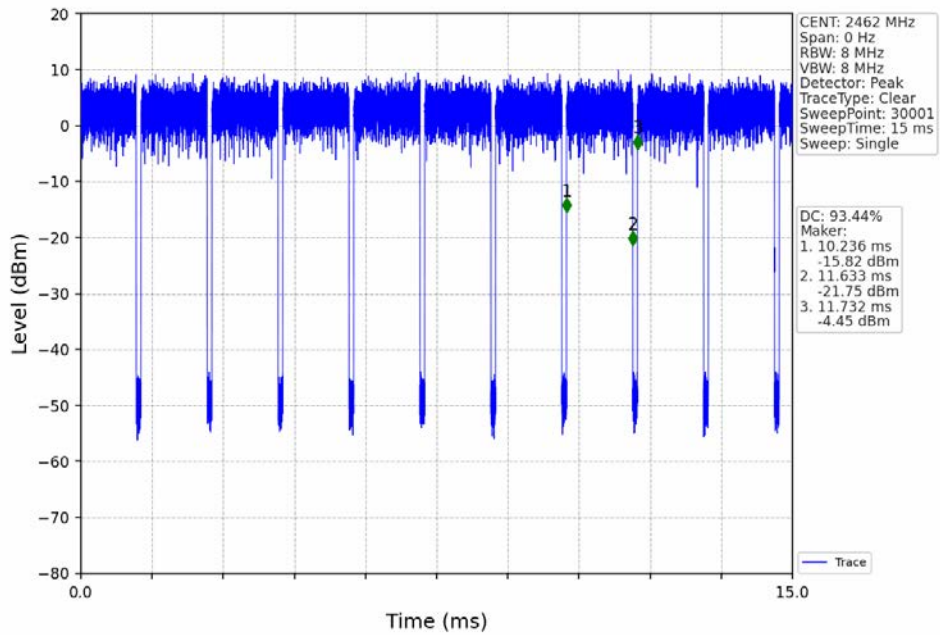
802.11g_LCH_2412MHz_Ant1 (SISO)_NTNV



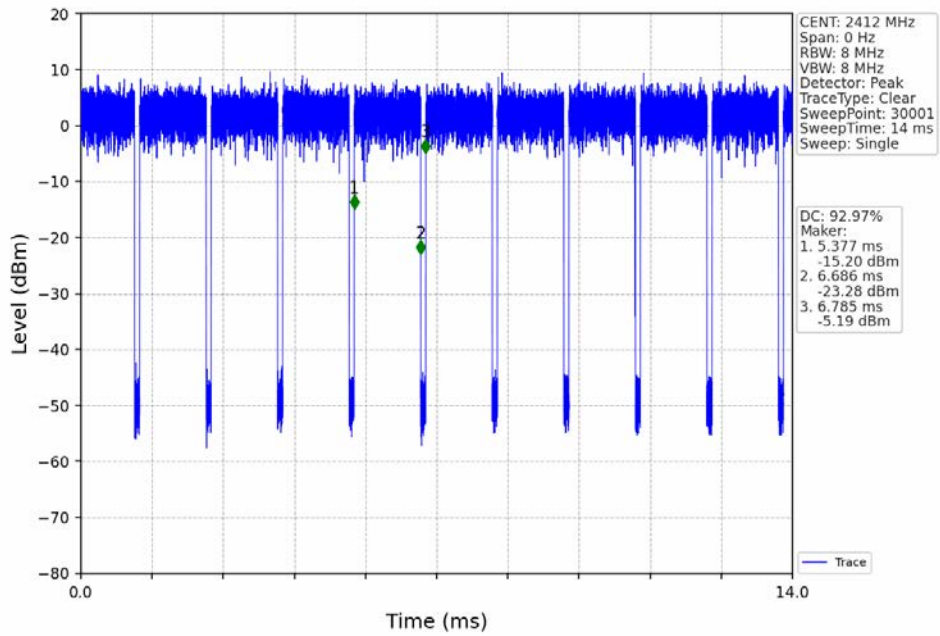
802.11g_MCH_2437MHz_Ant1 (SISO)_NTNV



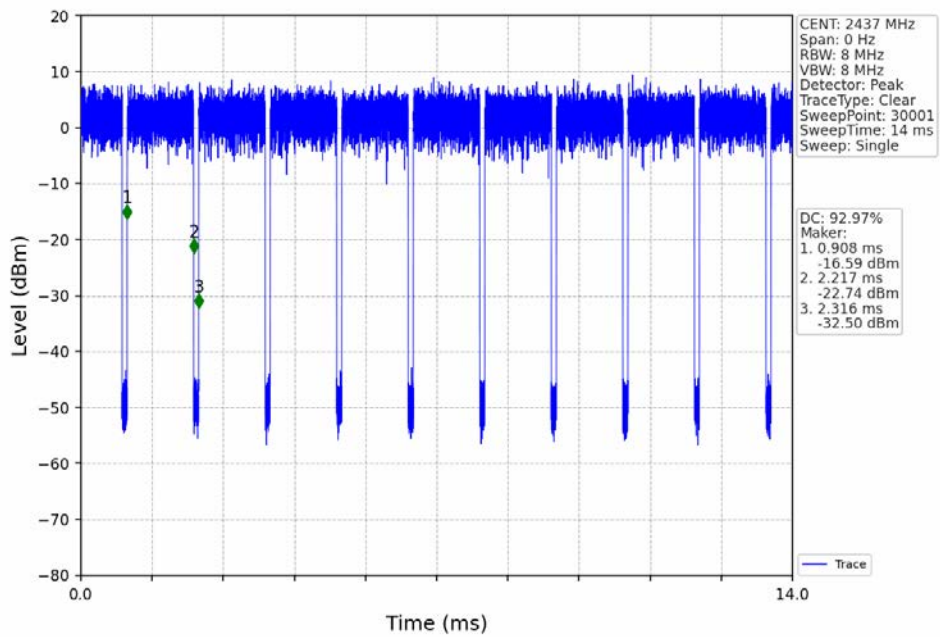
802.11g_HCH_2462MHz_Ant1 (SISO)_NTNV



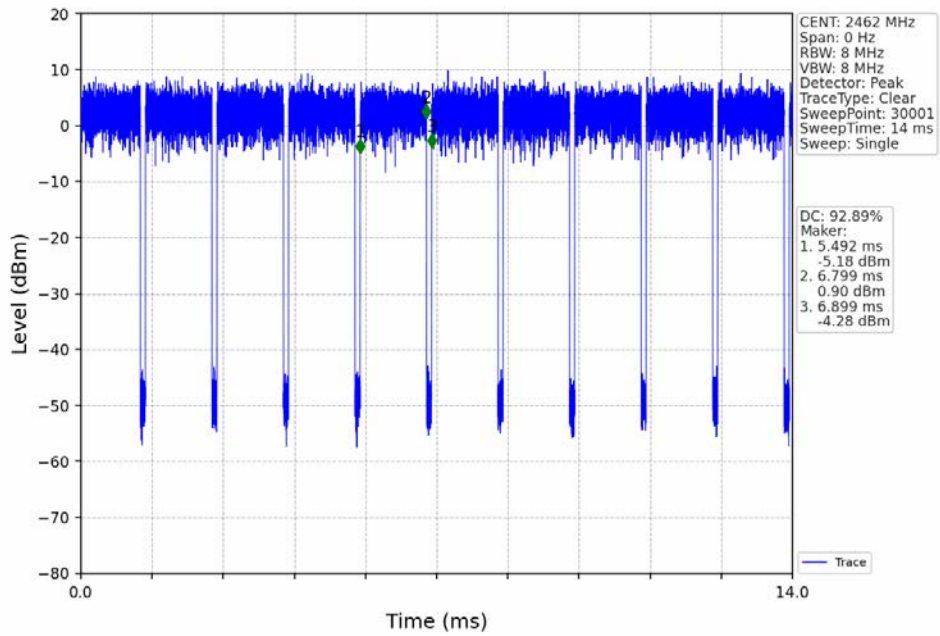
802.11n(HT20)_LCH_2412MHz_Ant1 (MIMO)_NTNV



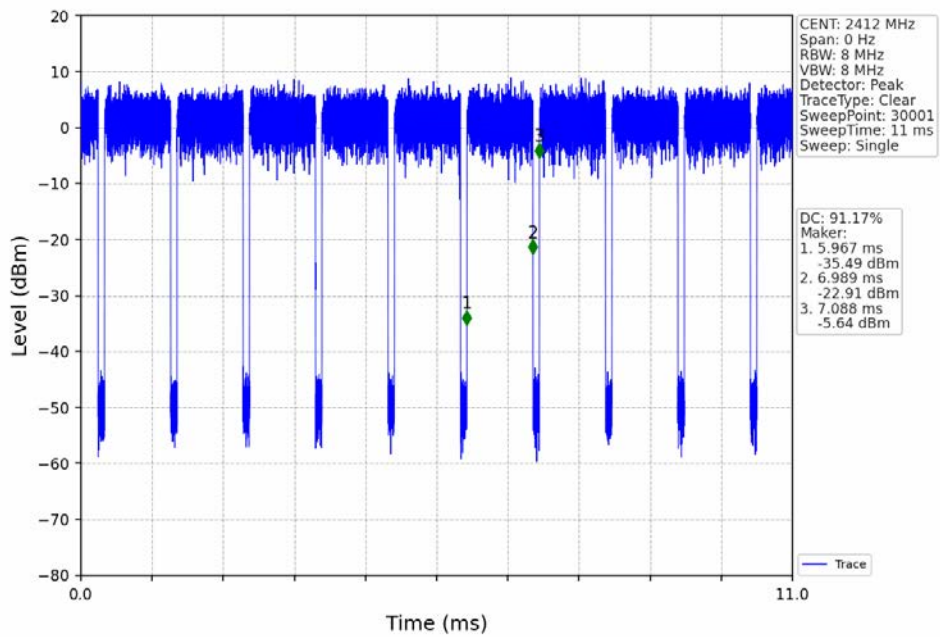
802.11n(HT20)_MCH_2437MHz_Ant1 (MIMO)_NTNV



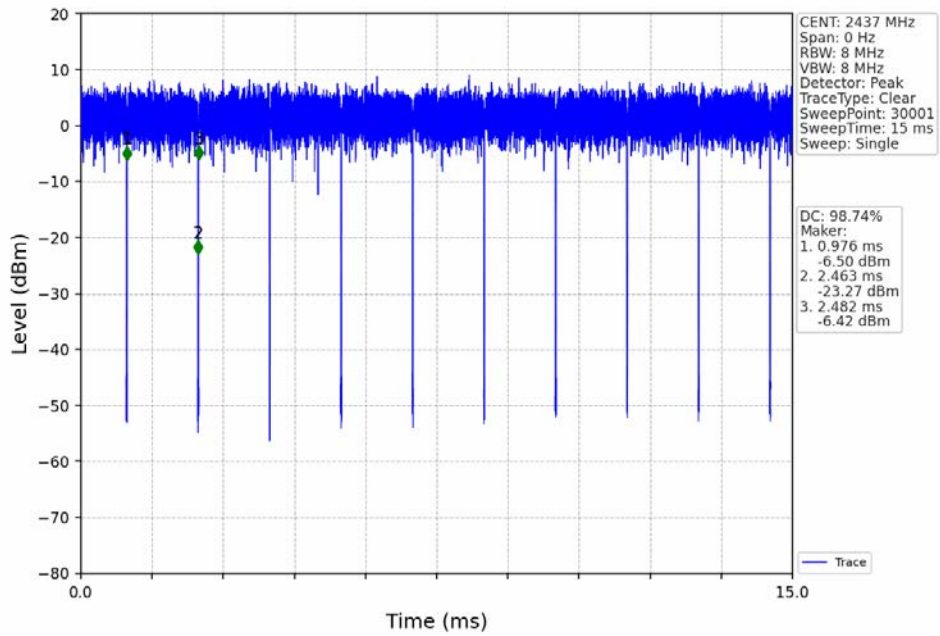
802.11n(HT20)_HCH_2462MHz_Ant1 (MIMO)_NTNV



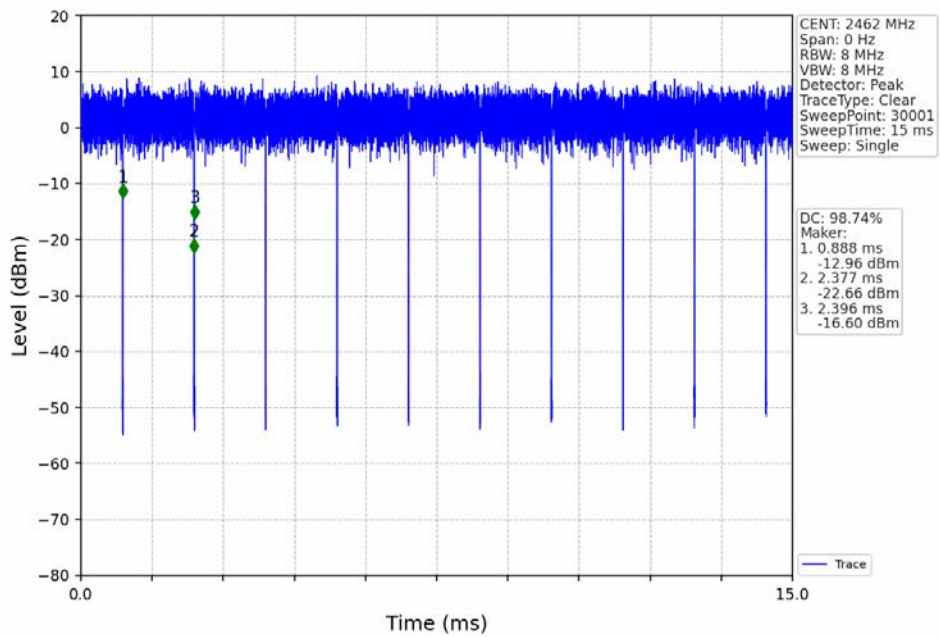
802.11ax(HEW20)_LCH_2412MHz_RU242_Left_Ant1 (MIMO)_NTNV



802.11ax(HEW20)_MCH_2437MHz_RU242_Left_Ant1 (MIMO)_NTNV



802.11ax(HEW20)_HCH_2462MHz_RU242_Left_Ant1 (MIMO)_NTNV



2. Bandwidth

2.1 Test Result

2.1.1 OBW

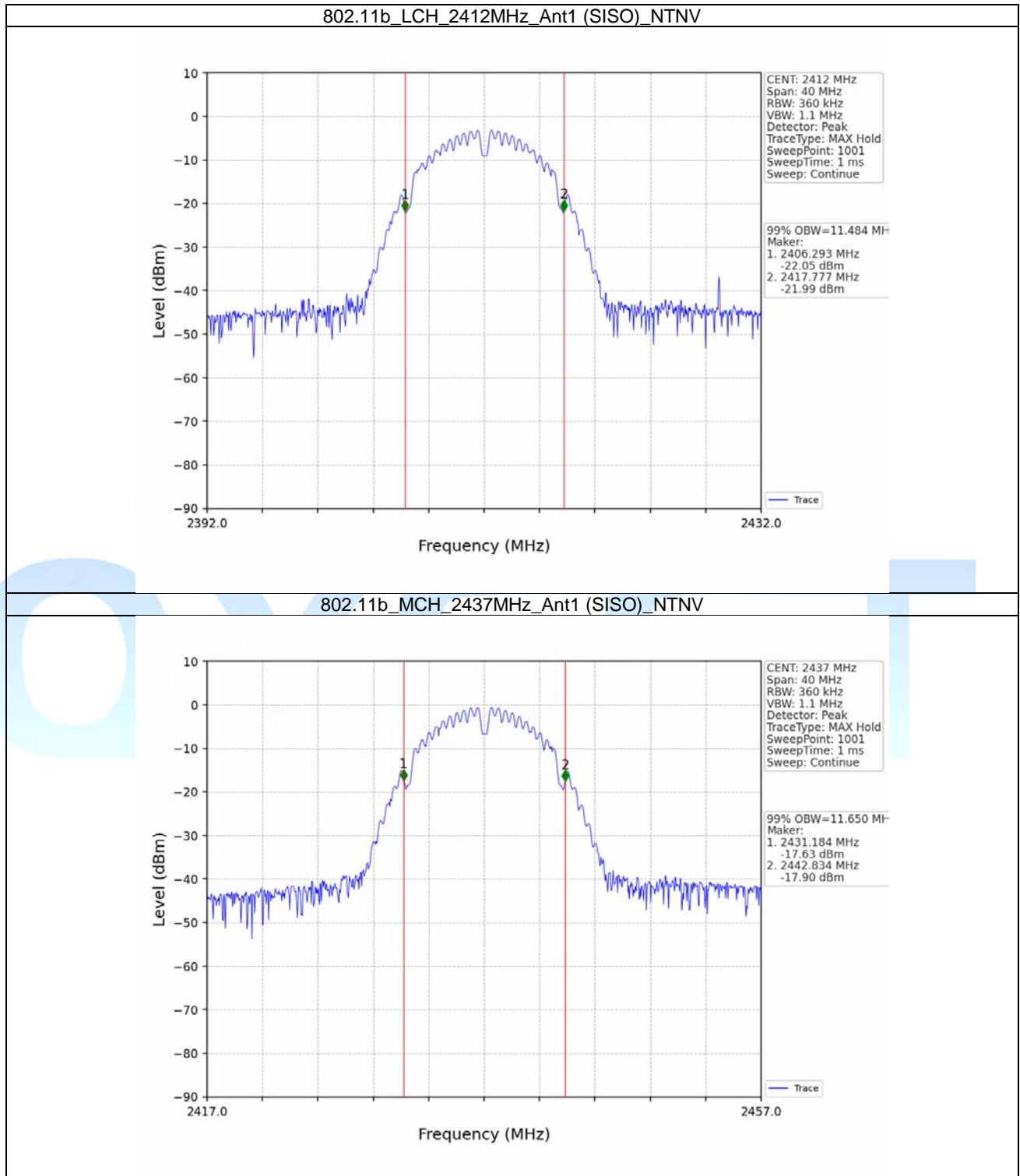
Mode	TX Type	Frequency (MHz)	RU	RU Pos	ANT	99% Occupied Bandwidth (MHz)		Verdict
						Result	Limit	
802.11b	SISO	2412	/	/	1	11.484	/	Pass
		2437	/	/	1	11.650	/	Pass
		2462	/	/	1	11.630	/	Pass
802.11g	SISO	2412	/	/	1	17.990	/	Pass
		2437	/	/	1	17.975	/	Pass
		2462	/	/	1	17.912	/	Pass
802.11n (HT20)	MIMO	2412	/	/	1	18.882	/	Pass
		2437	/	/	1	18.823	/	Pass
		2462	/	/	1	18.797	/	Pass
802.11ax (HEW20)	MIMO	2412	RU242	Left	1	19.182	/	Pass
		2437	RU242	Left	1	19.162	/	Pass
		2462	RU242	Left	1	19.103	/	Pass

2.1.2 6dB BW

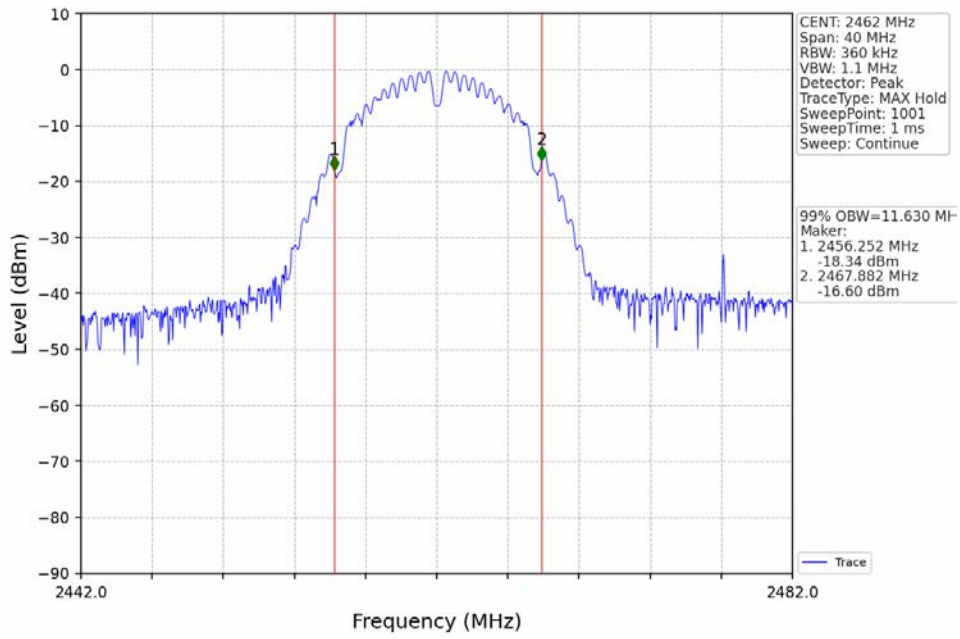
Mode	TX Type	Frequency (MHz)	RU	RU Pos	ANT	6dB Bandwidth (MHz)		Verdict
						Result	Limit	
802.11b	SISO	2412	/	/	1	8.047	≥ 0.5	Pass
		2437	/	/	1	7.586	≥ 0.5	Pass
		2462	/	/	1	8.013	≥ 0.5	Pass
802.11g	SISO	2412	/	/	1	16.369	≥ 0.5	Pass
		2437	/	/	1	16.372	≥ 0.5	Pass
		2462	/	/	1	16.365	≥ 0.5	Pass
802.11n (HT20)	MIMO	2412	/	/	1	17.603	≥ 0.5	Pass
		2437	/	/	1	17.601	≥ 0.5	Pass
		2462	/	/	1	17.599	≥ 0.5	Pass
802.11ax (HEW20)	MIMO	2412	RU242	Left	1	18.937	≥ 0.5	Pass
		2437	RU242	Left	1	18.833	≥ 0.5	Pass
		2462	RU242	Left	1	18.722	≥ 0.5	Pass

2.2 Test Graph

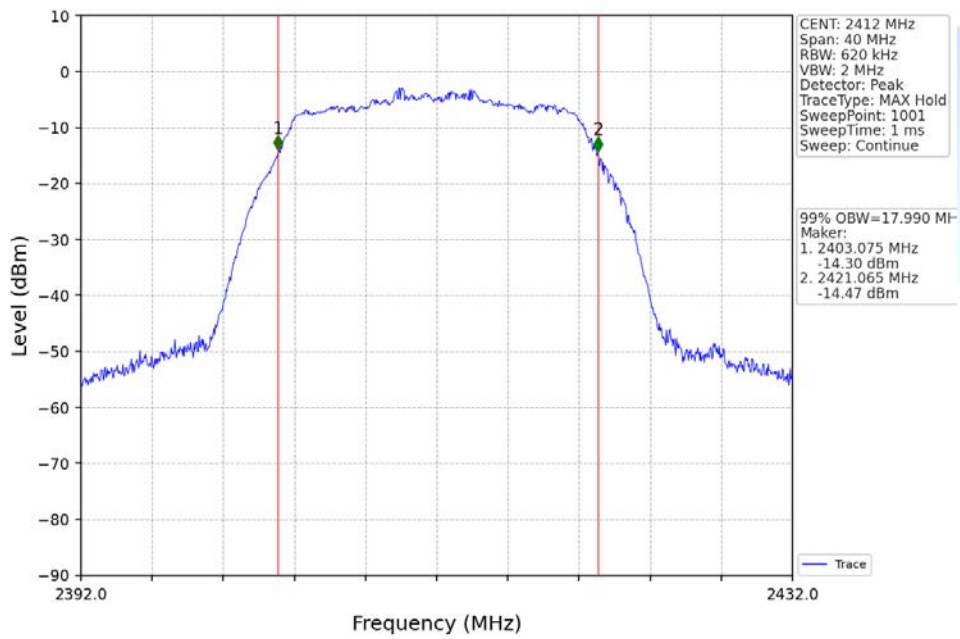
2.2.1 OBW



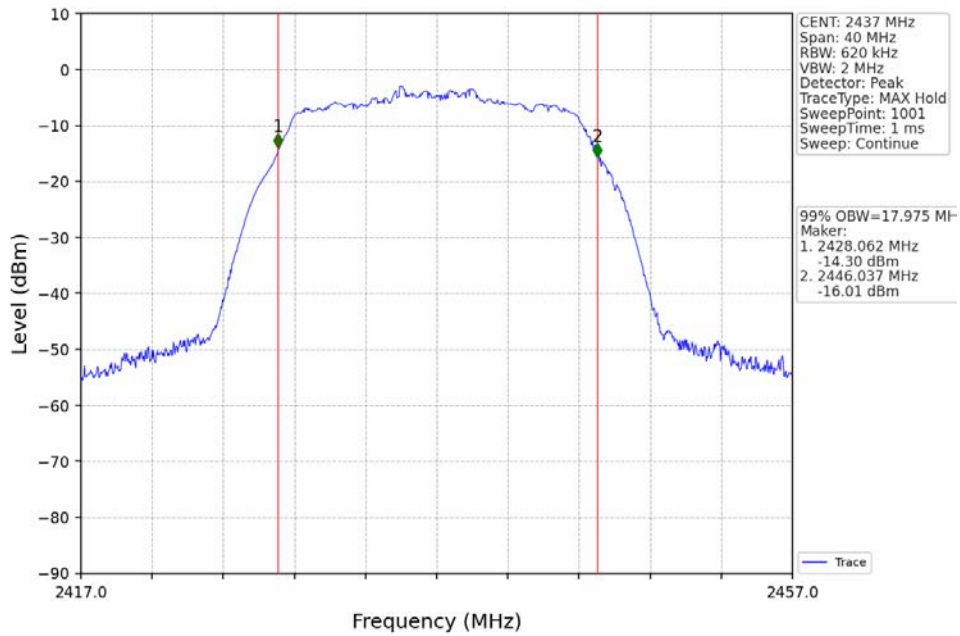
802.11b_HCH_2462MHz_Ant1 (SISO)_NTNV



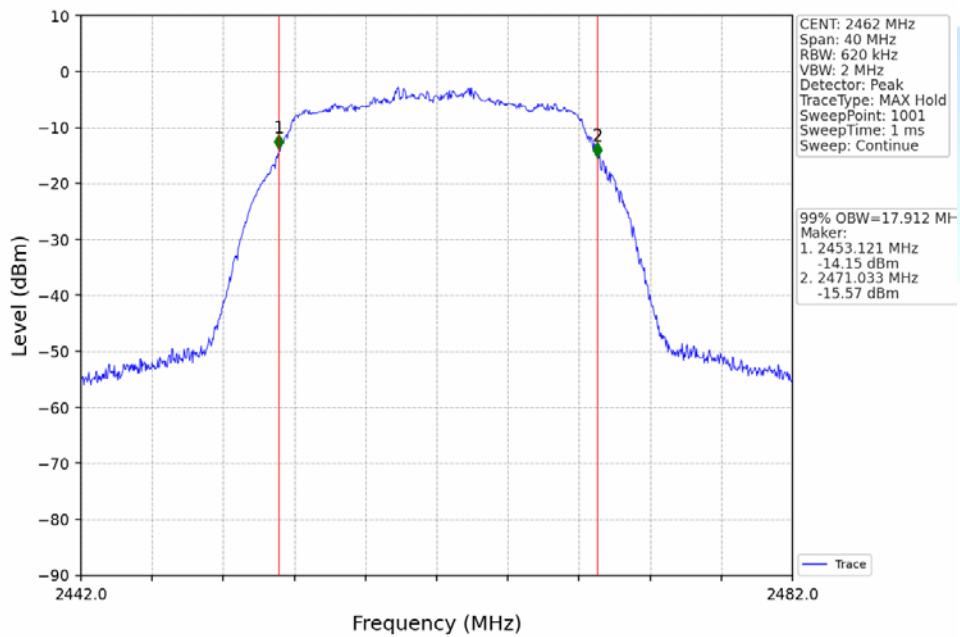
802.11g_LCH_2412MHz_Ant1 (SISO)_NTNV



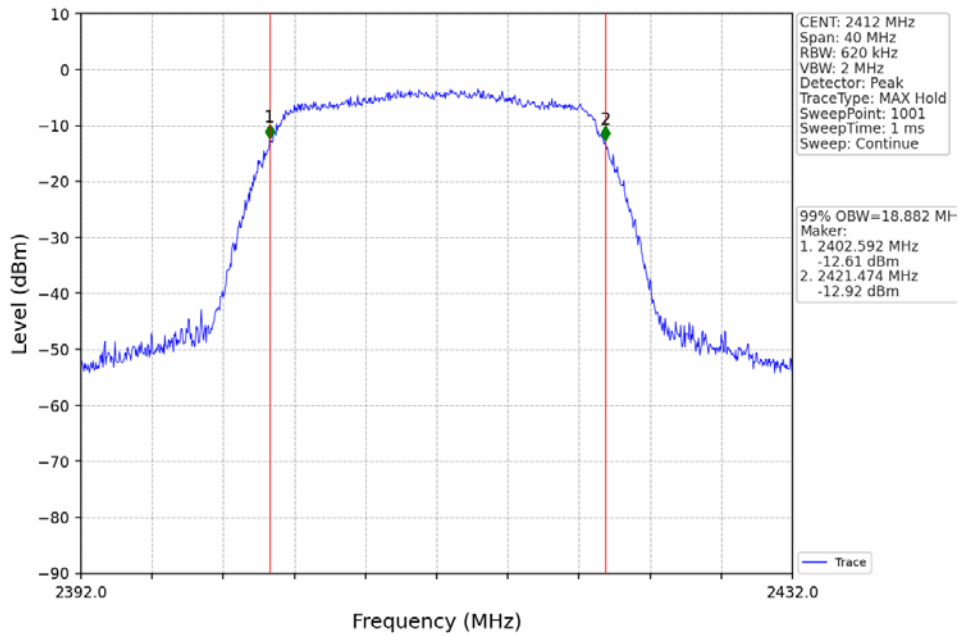
802.11g_MCH_2437MHz_Ant1 (SISO)_NTNV



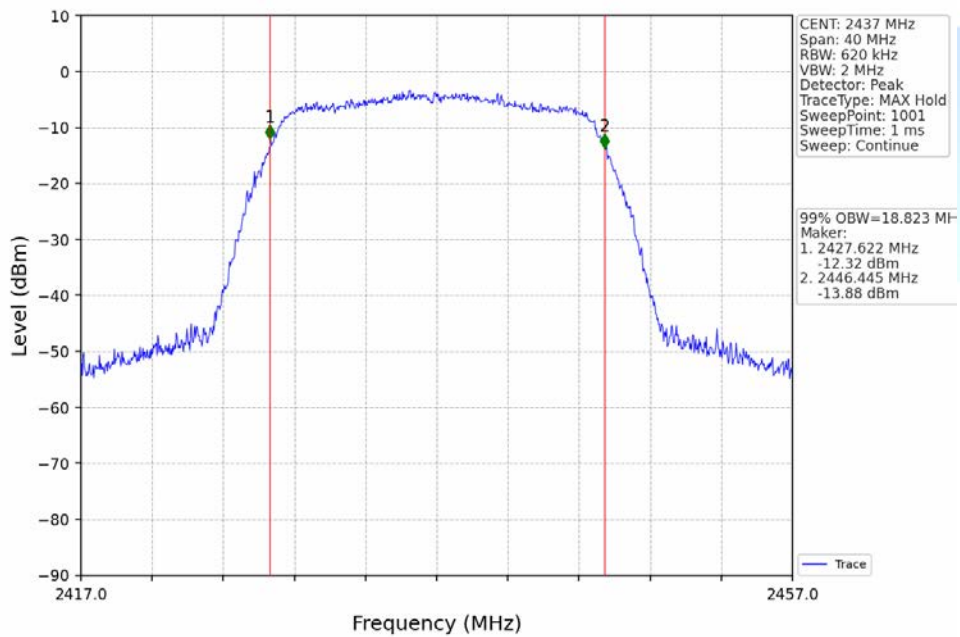
802.11g_HCH_2462MHz_Ant1 (SISO)_NTNV



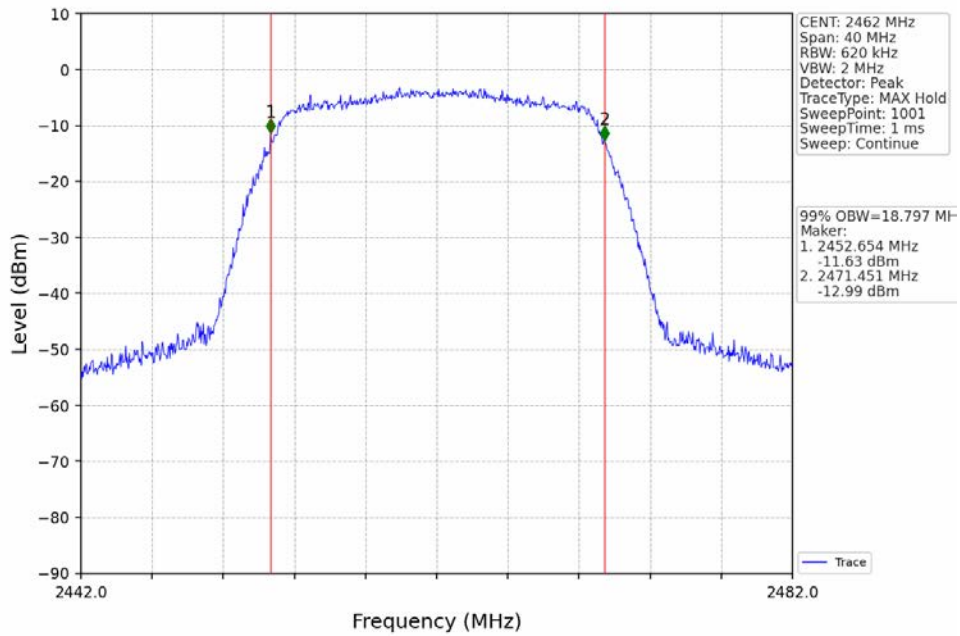
802.11n(HT20)_LCH_2412MHz_Ant1 (MIMO)_NTNV



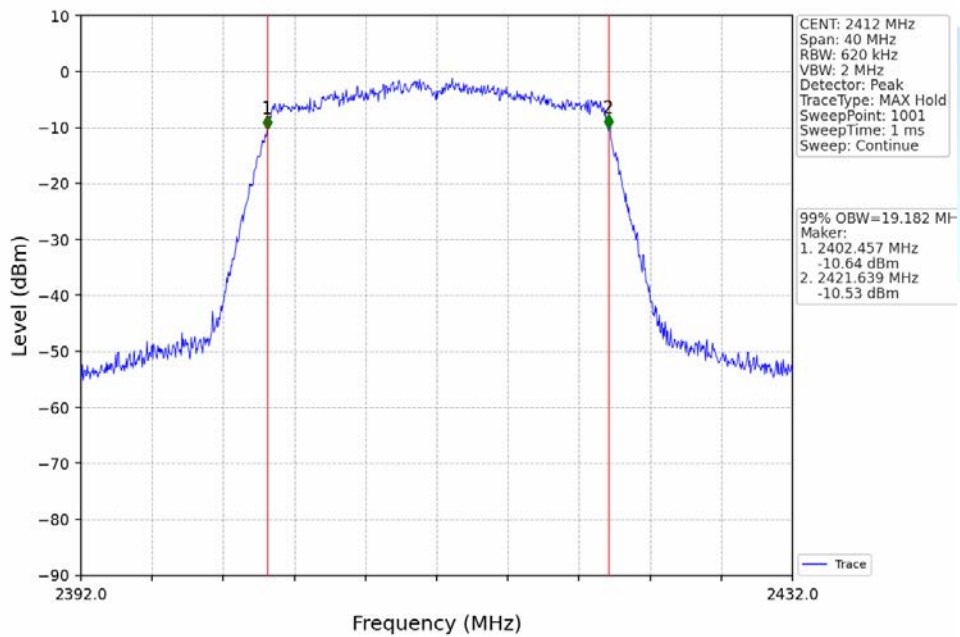
802.11n(HT20)_MCH_2437MHz_Ant1 (MIMO)_NTNV



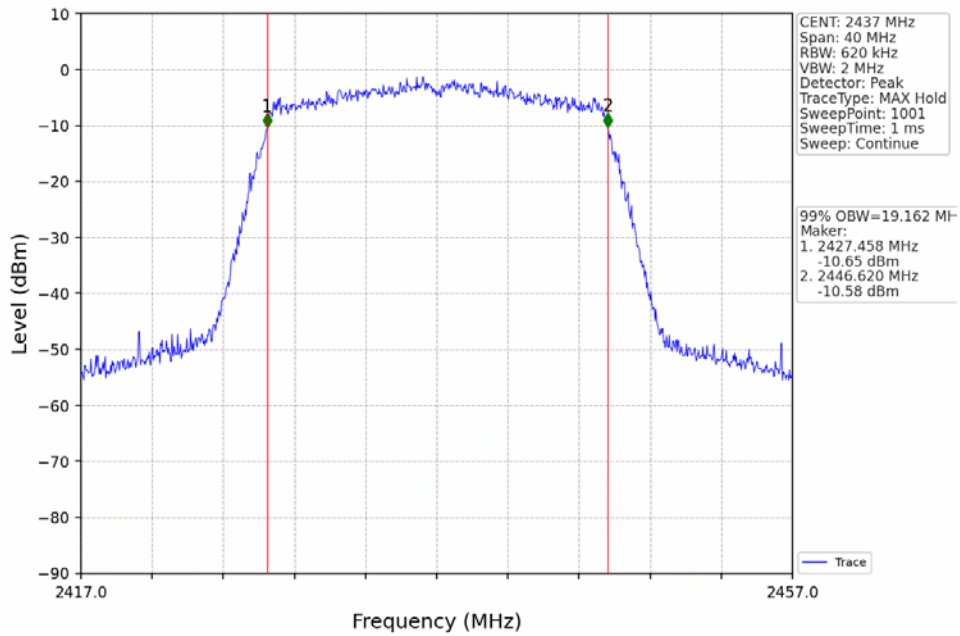
802.11n(HT20)_HCH_2462MHz_Ant1 (MIMO)_NTNV



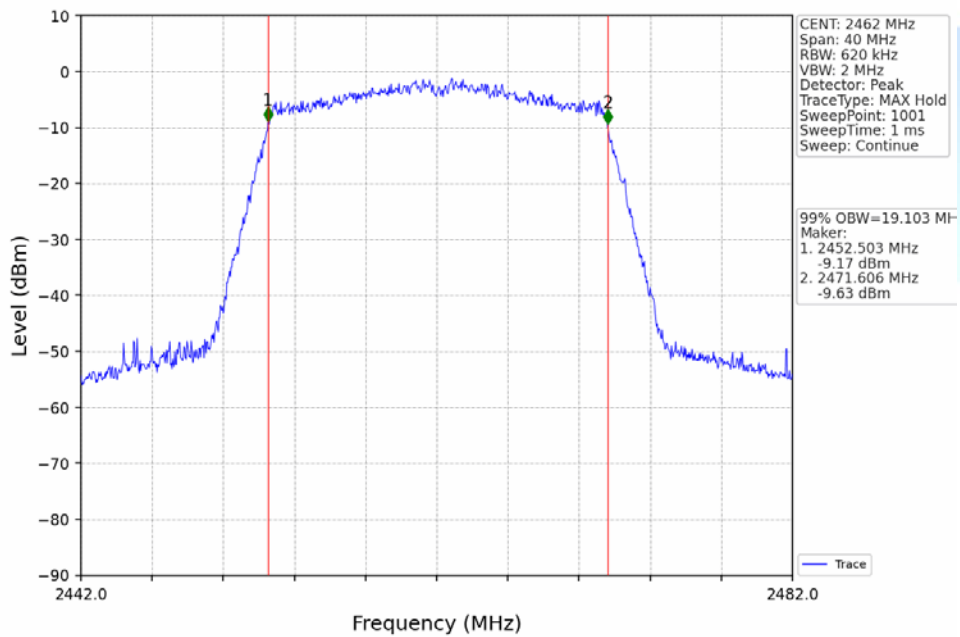
802.11ax(HEW20)_LCH_2412MHz_RU242_Left_Ant1 (MIMO)_NTNV



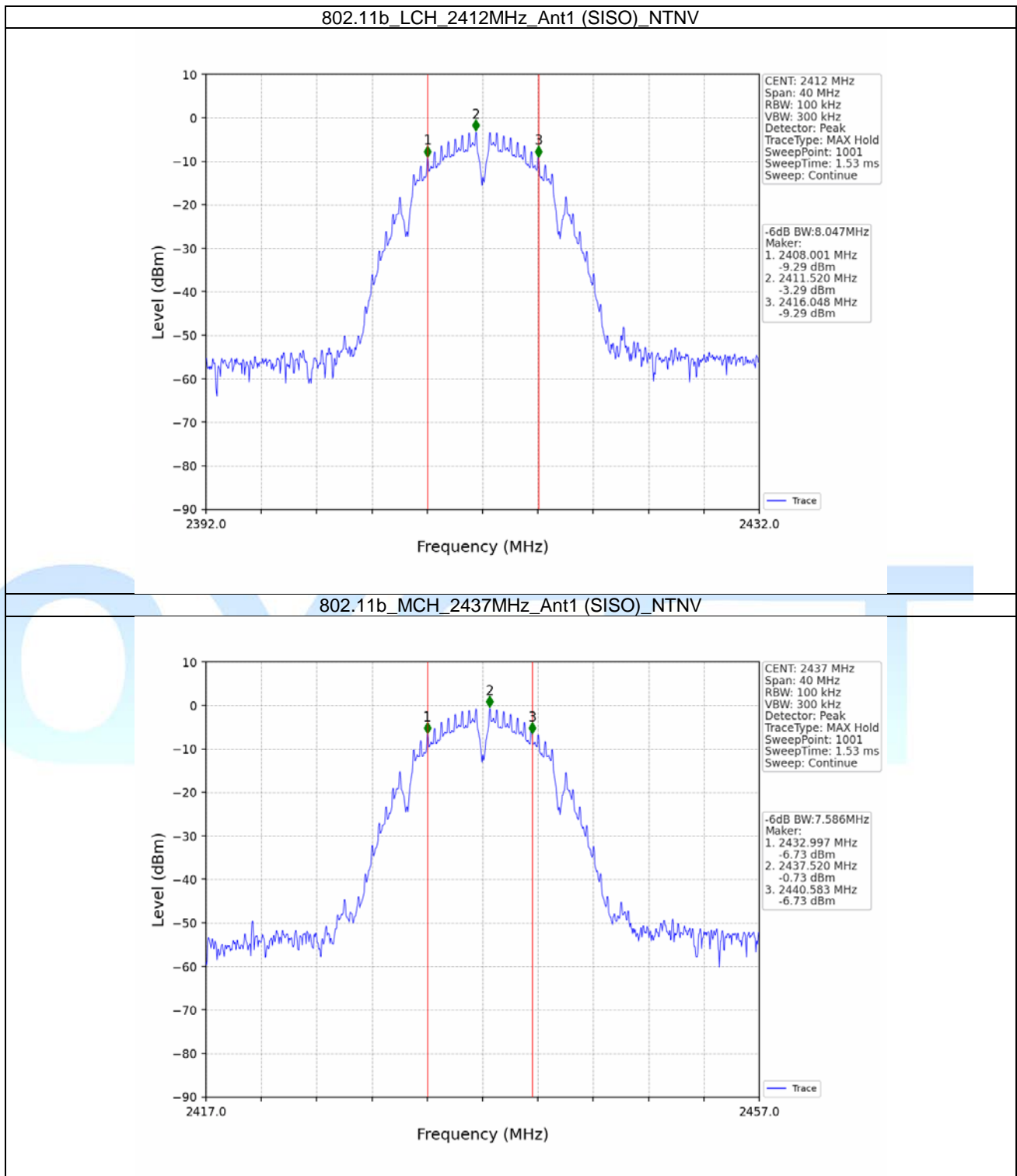
802.11ax(HEW20)_MCH_2437MHz_RU242_Left_Ant1 (MIMO)_NTNV



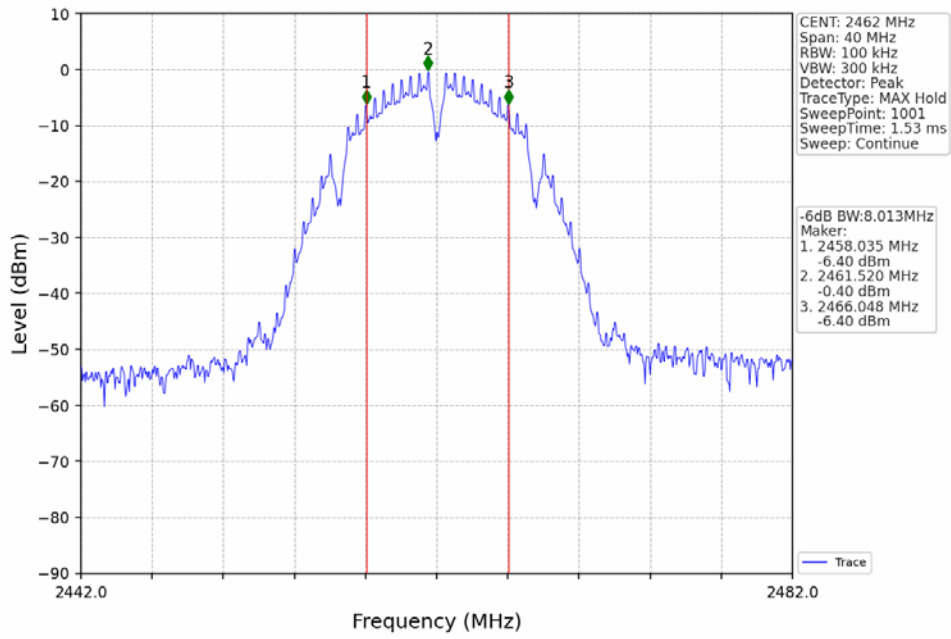
802.11ax(HEW20)_HCH_2462MHz_RU242_Left_Ant1 (MIMO)_NTNV



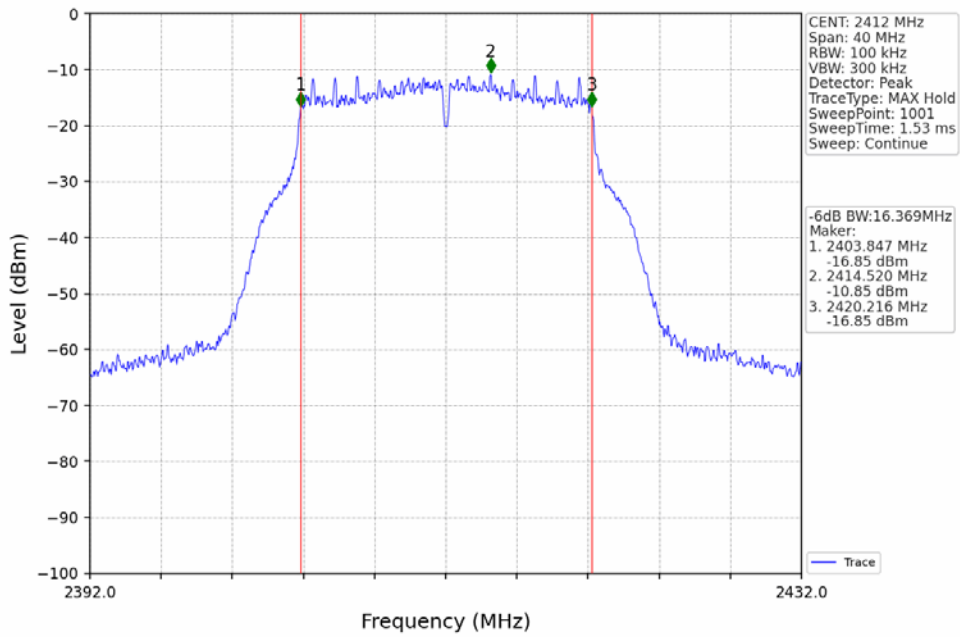
2.2.2 6dB BW



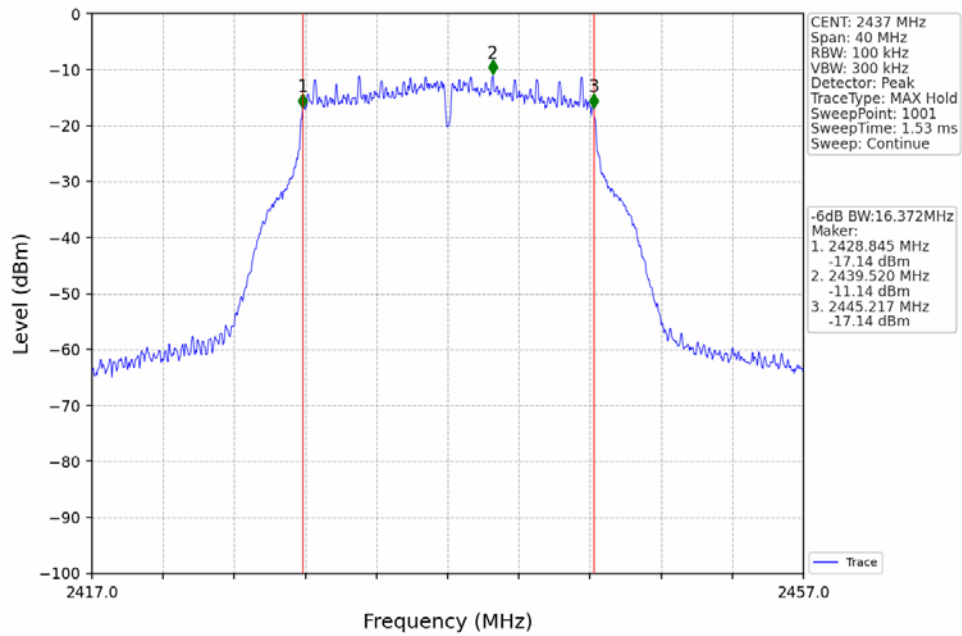
802.11b_HCH_2462MHz_Ant1 (SISO)_NTNV



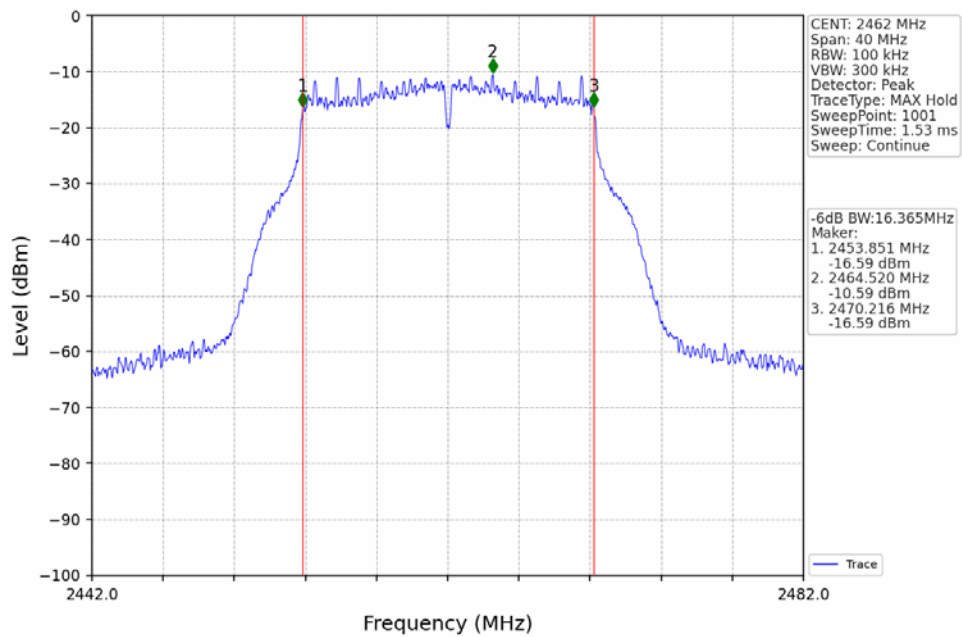
802.11g_LCH_2412MHz_Ant1 (SISO)_NTNV



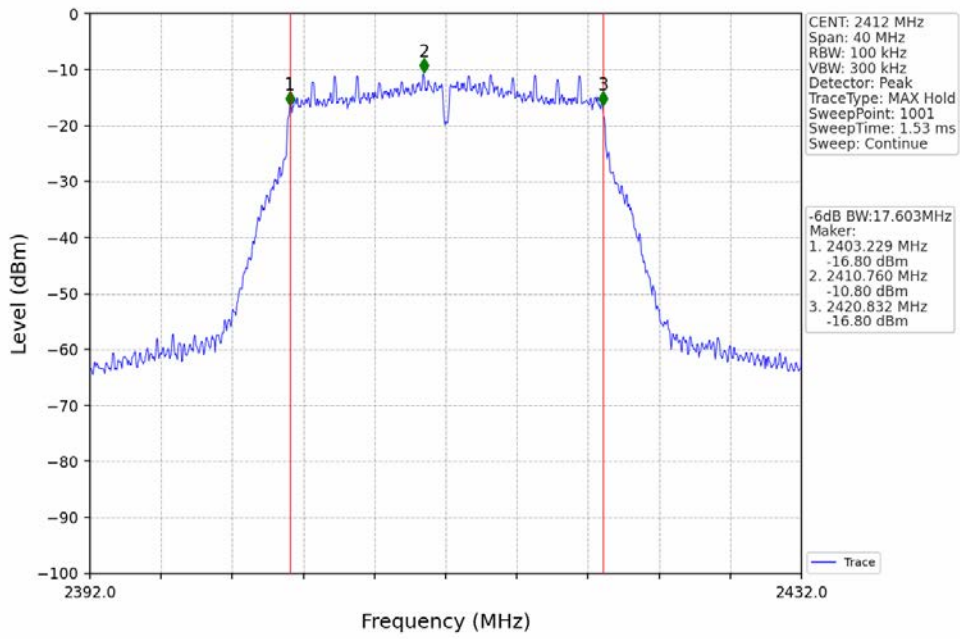
802.11g_MCH_2437MHz_Ant1 (SISO)_NTNV



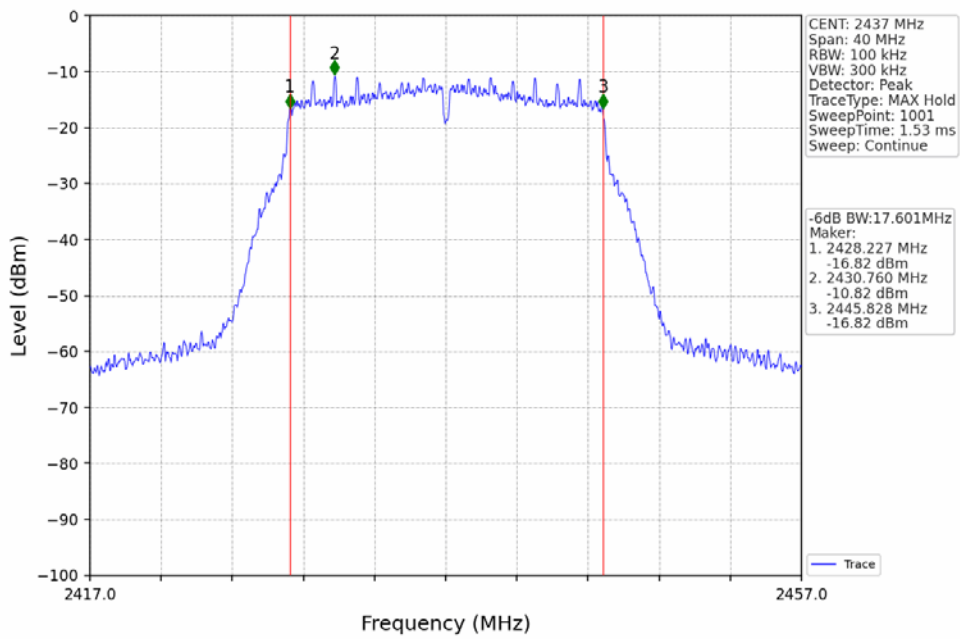
802.11g_HCH_2462MHz_Ant1 (SISO)_NTNV



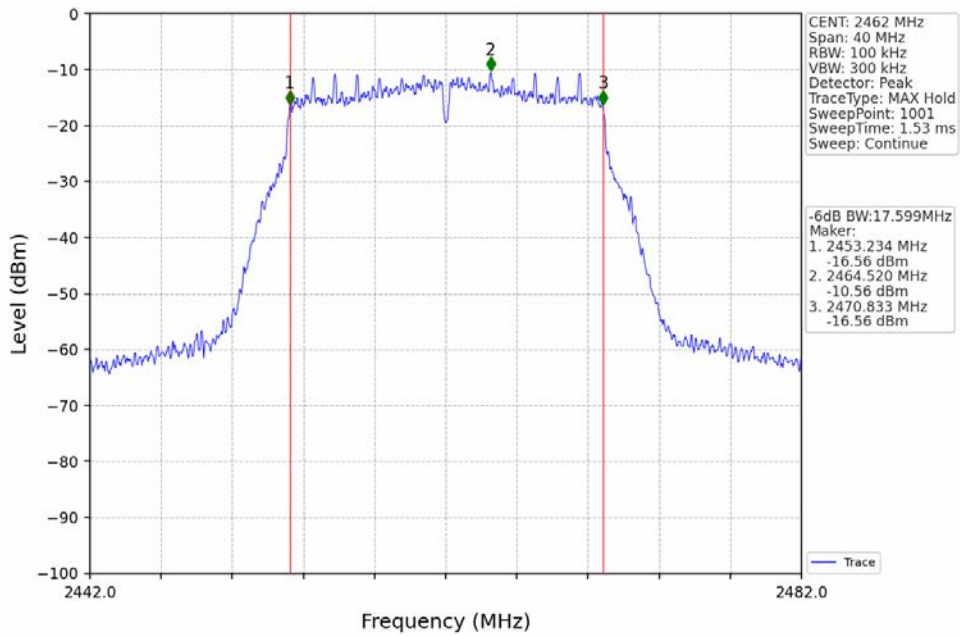
802.11n(HT20)_LCH_2412MHz_Ant1 (MIMO)_NTNV



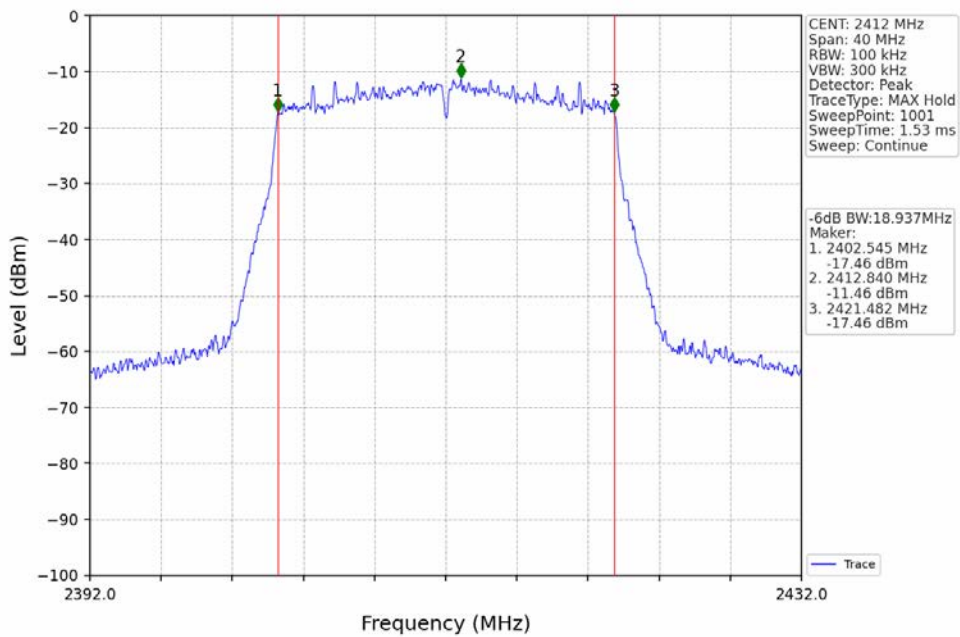
802.11n(HT20)_MCH_2437MHz_Ant1 (MIMO)_NTNV



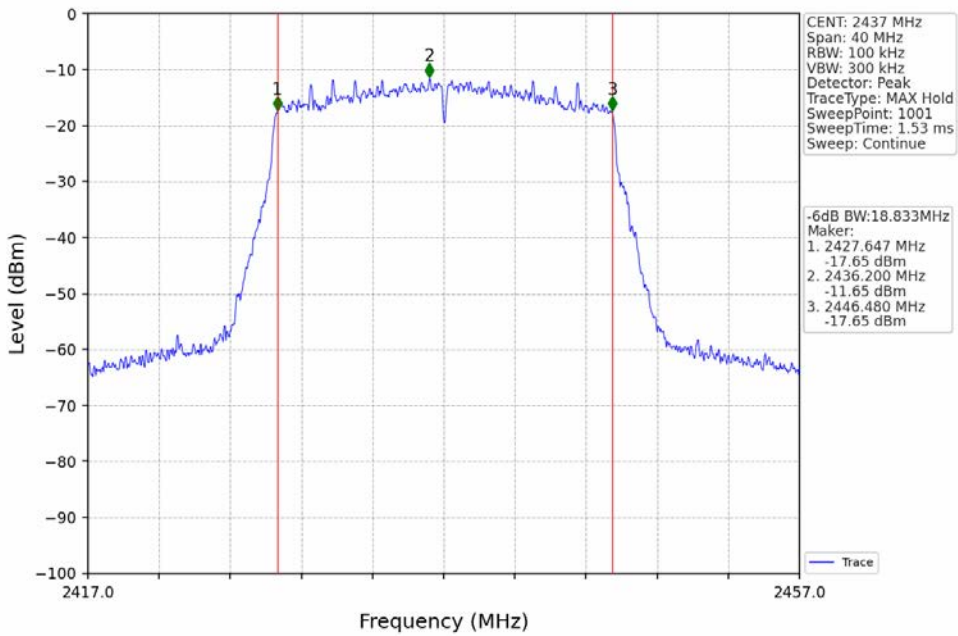
802.11n(HT20)_HCH_2462MHz_Ant1 (MIMO)_NTNV



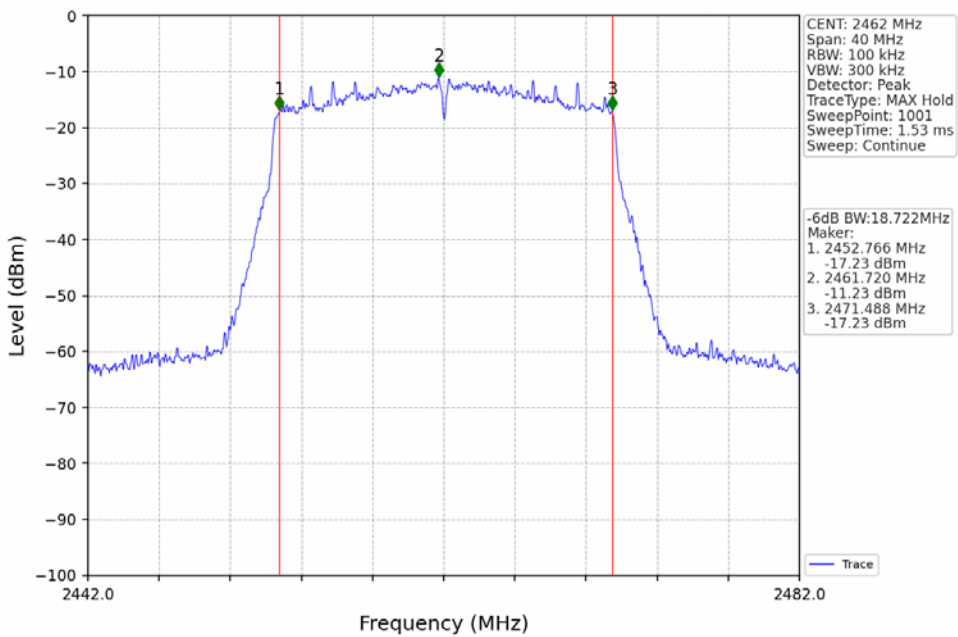
802.11ax(HEW20)_LCH_2412MHz_RU242_Left_Ant1 (MIMO)_NTNV



802.11ax(HEW20)_MCH_2437MHz_RU242_Left_Ant1 (MIMO)_NTNV



802.11ax(HEW20)_HCH_2462MHz_RU242_Left_Ant1 (MIMO)_NTNV



3. Maximum Conducted Output Power

3.1 Test Result

3.1.1 Power

Mode	TX Type	Frequency (MHz)	RU	RU Pos	Maximum Peak Conducted Output Power (dBm)				Verdict
					ANT1	ANT2	MIMO	Limit	
802.11b	SISO	2412	/	/	9.75	9.74	/	<=30	Pass
		2437	/	/	10.29	10.58	/	<=30	Pass
		2462	/	/	9.62	8.96	/	<=30	Pass
802.11g	SISO	2412	/	/	8.91	9.05	/	<=30	Pass
		2437	/	/	8.77	9.22	/	<=30	Pass
		2462	/	/	9.12	9.67	/	<=30	Pass
802.11n (HT20)	MIMO	2412	/	/	8.91	6.23	10.78	<=30	Pass
		2437	/	/	8.85	6.50	10.84	<=30	Pass
		2462	/	/	9.17	6.82	11.16	<=30	Pass
802.11ax (HEW20)	MIMO	2412	RU242	Left	9.87	8.82	12.39	<=30	Pass
		2437	RU242	Left	9.46	9.86	12.67	<=30	Pass
		2462	RU242	Left	9.88	10.25	13.08	<=30	Pass

Note1: Antenna Gain: Ant1: 2.96dBi; Ant2: 2.96dBi;
 Note2: Directional Gain: 5.97dBi



4. Maximum Power Spectral Density

4.1 Test Result

4.1.1 PSD

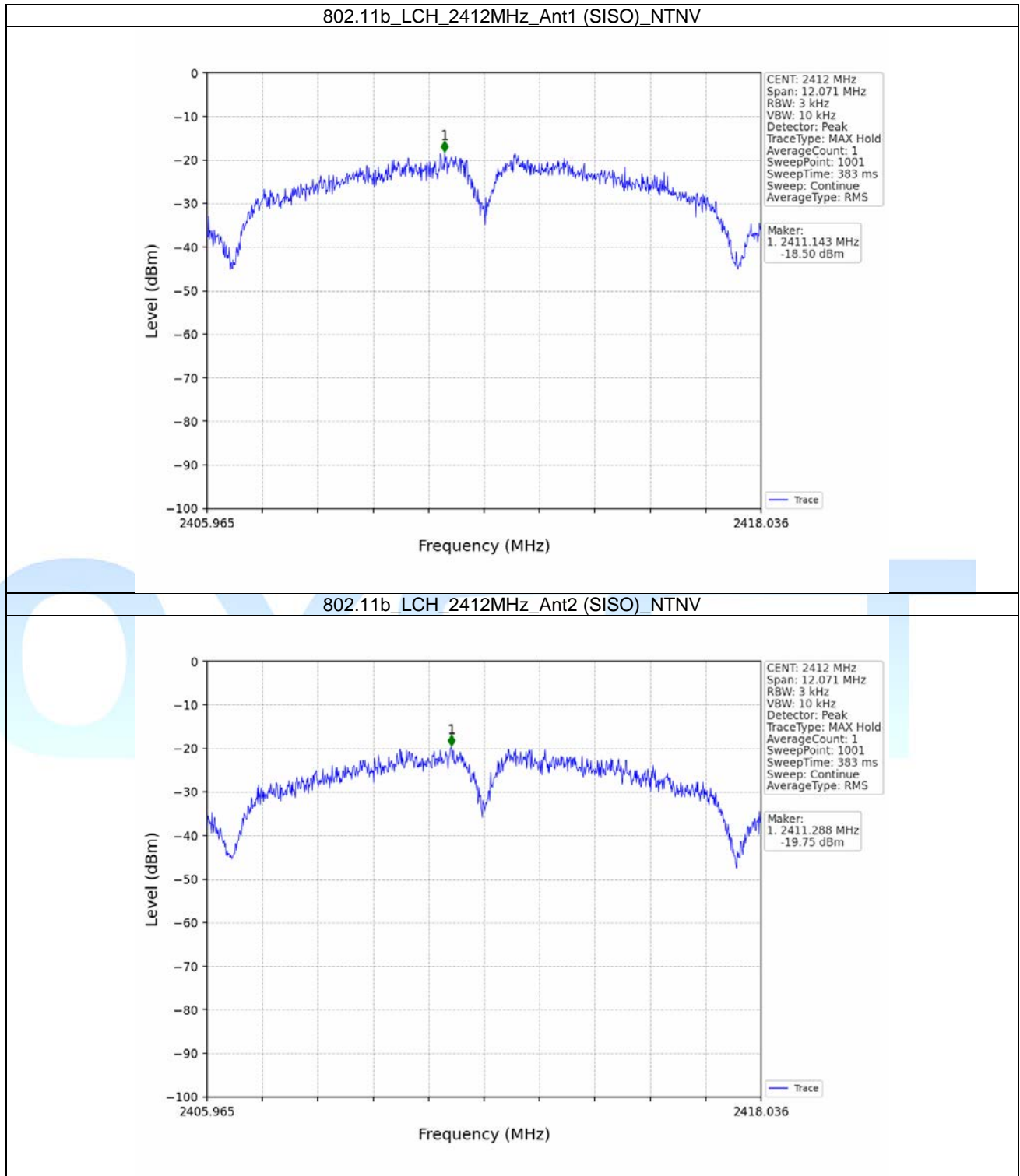
Mode	TX Type	Frequency (MHz)	RU	RU Pos	Maximum PSD (dBm/3kHz)				Verdict
					ANT1	ANT2	MIMO	Limit	
802.11b	SISO	2412	/	/	-18.50	-19.75	/	<=8	Pass
		2437	/	/	-15.53	-16.91	/	<=8	Pass
		2462	/	/	-15.44	-16.09	/	<=8	Pass
802.11g	SISO	2412	/	/	-23.84	-24.48	/	<=8	Pass
		2437	/	/	-23.04	-23.73	/	<=8	Pass
		2462	/	/	-22.83	-22.48	/	<=8	Pass
802.11n (HT20)	MIMO	2412	/	/	-24.37	-33.45	-24.10	<=8	Pass
		2437	/	/	-23.45	-33.14	-23.12	<=8	Pass
		2462	/	/	-22.58	-32.66	-22.53	<=8	Pass
802.11ax (HEW20)	MIMO	2412	RU242	Left	-25.01	-25.91	-23.54	<=8	Pass
		2437	RU242	Left	-25.73	-25.93	-23.71	<=8	Pass
		2462	RU242	Left	-24.91	-25.39	-23.39	<=8	Pass

Note1: Antenna Gain: Ant1: 2.96dBi; Ant2: 2.96dBi;
 Note2: Directional Gain: 5.97dBi

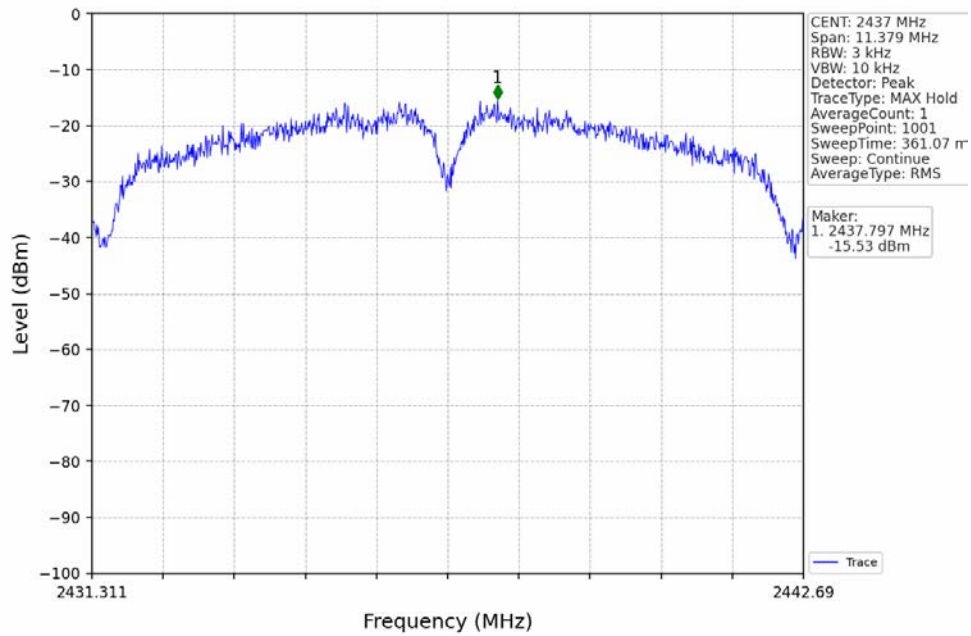


4.2 Test Graph

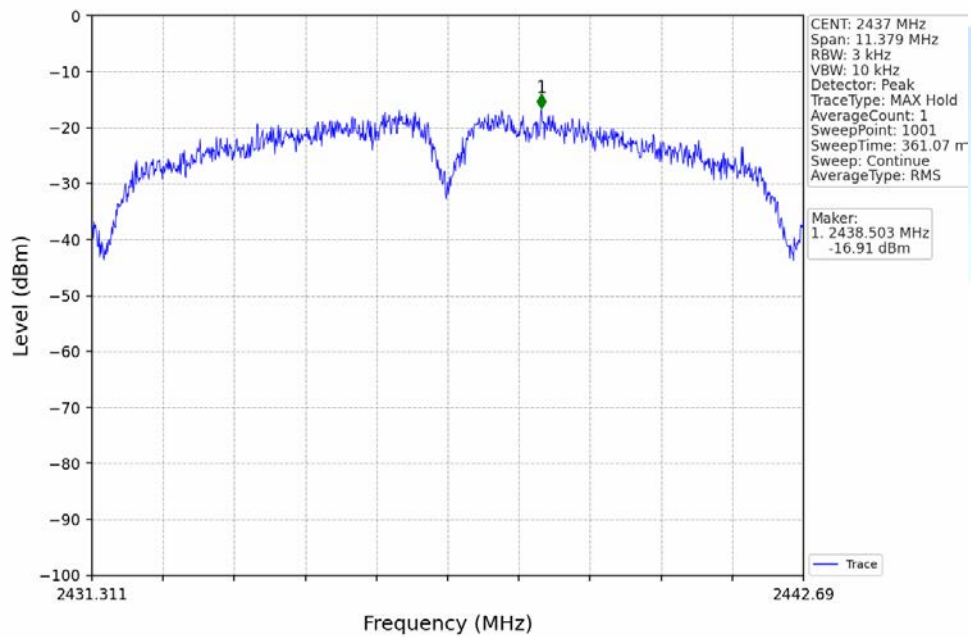
4.2.1 PSD



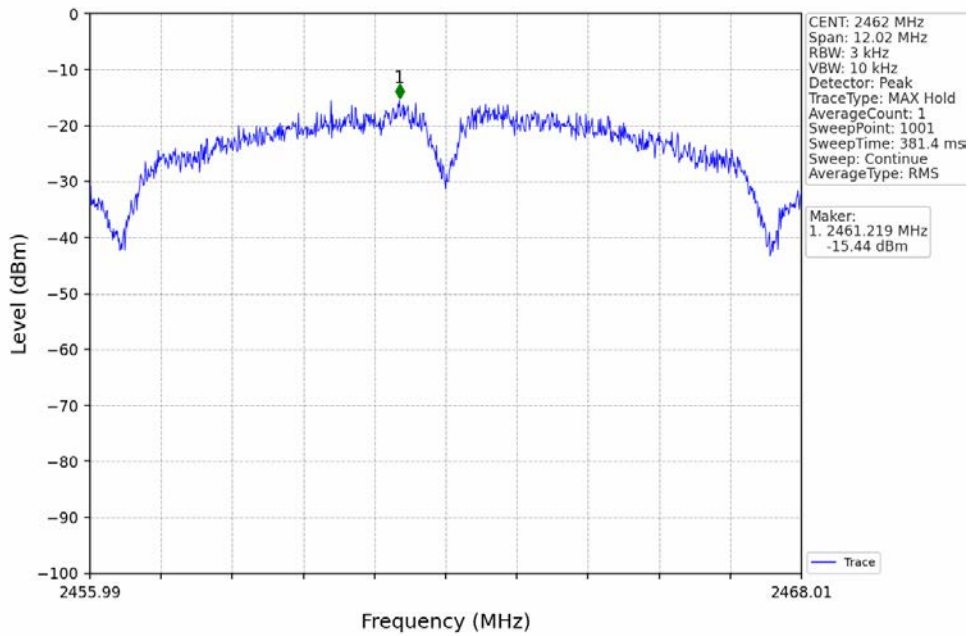
802.11b_MCH_2437MHz_Ant1 (SISO)_NTNV



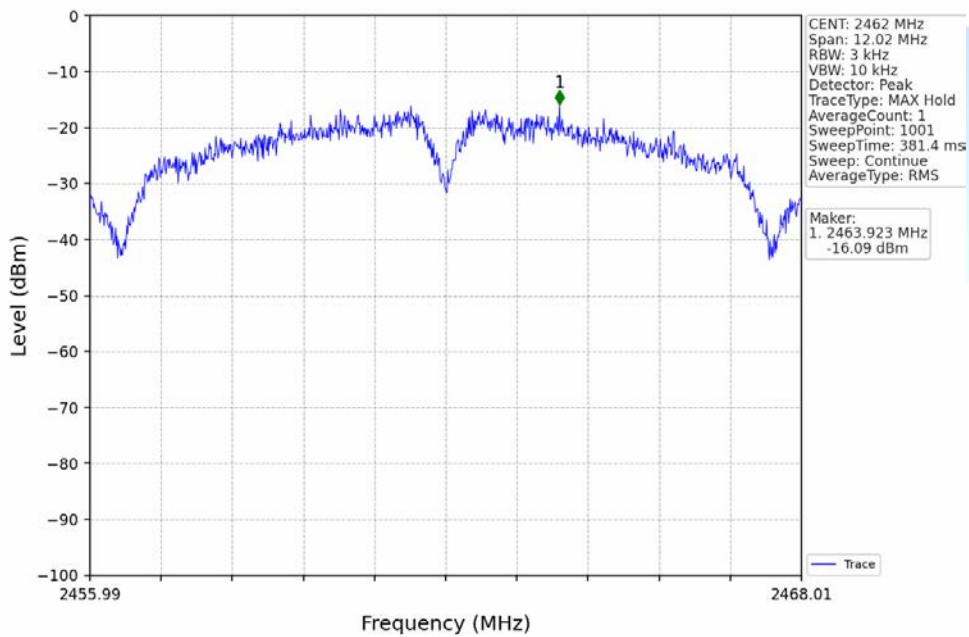
802.11b_MCH_2437MHz_Ant2 (SISO)_NTNV



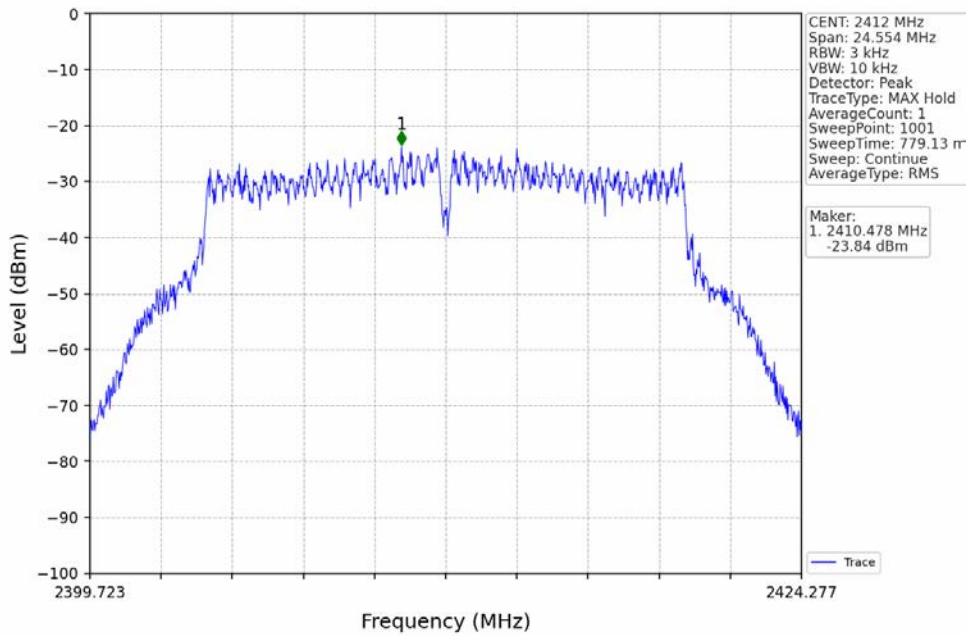
802.11b_HCH_2462MHz_Ant1 (SISO)_NTNV



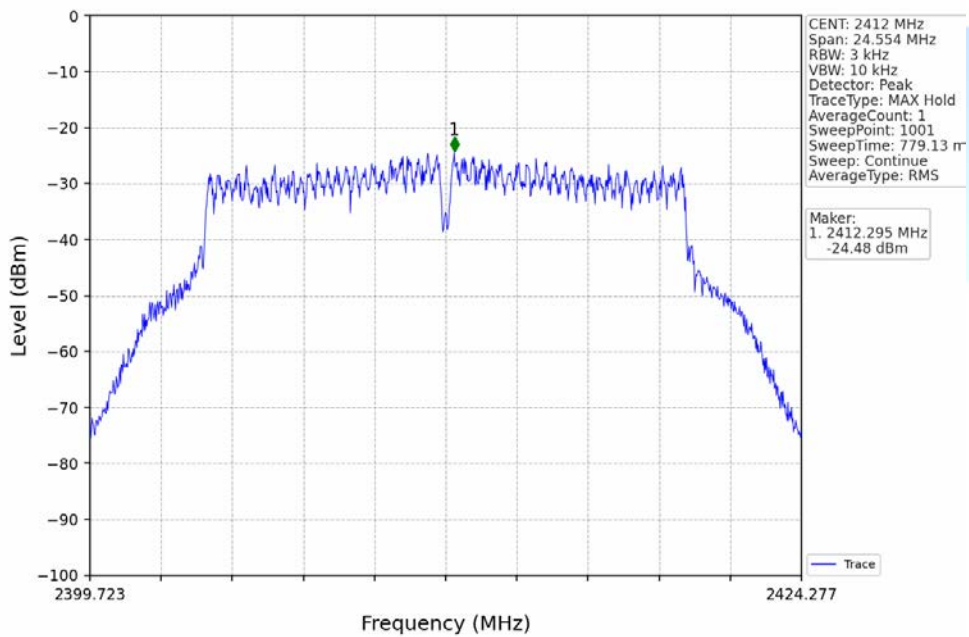
802.11b_HCH_2462MHz_Ant2 (SISO)_NTNV



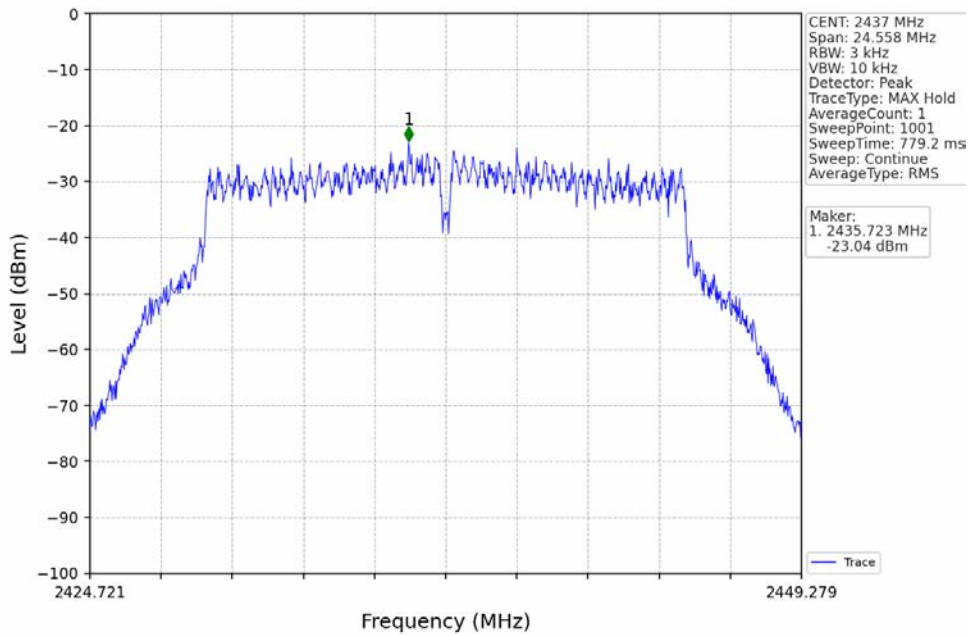
802.11g_LCH_2412MHz_Ant1 (SISO)_NTNV



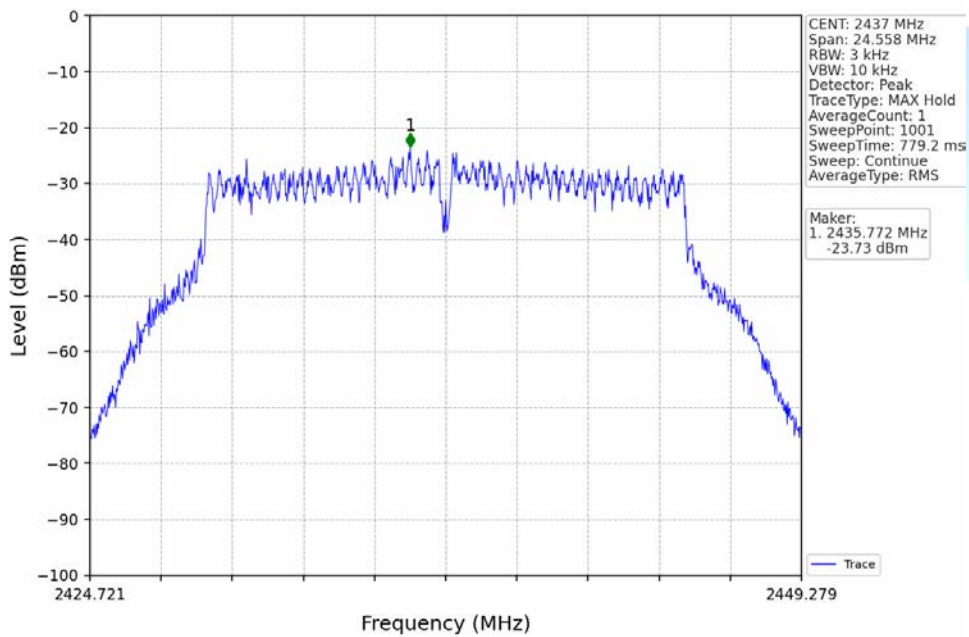
802.11g_LCH_2412MHz_Ant2 (SISO)_NTNV



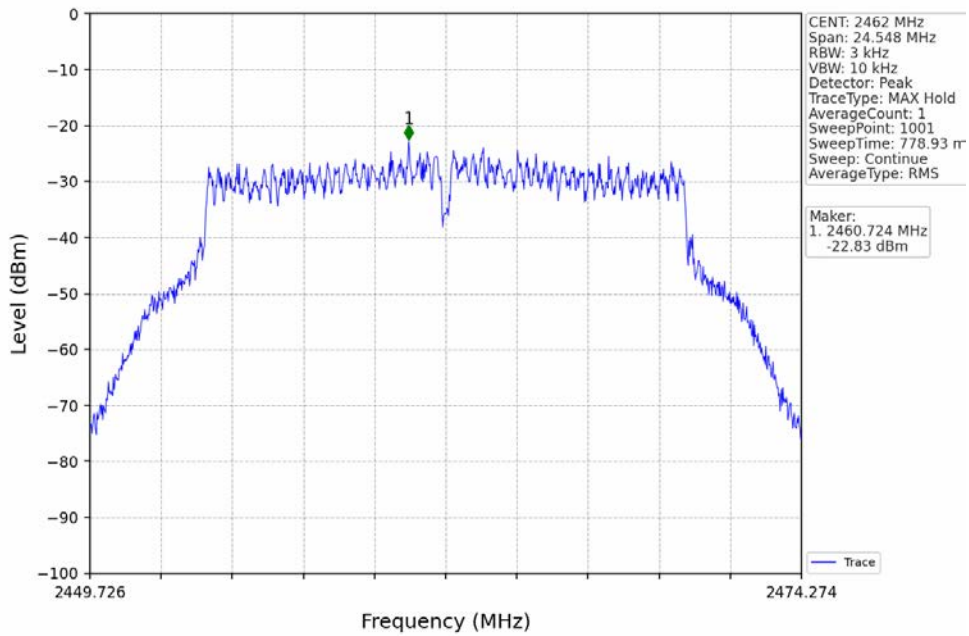
802.11g_MCH_2437MHz_Ant1 (SISO)_NTNV



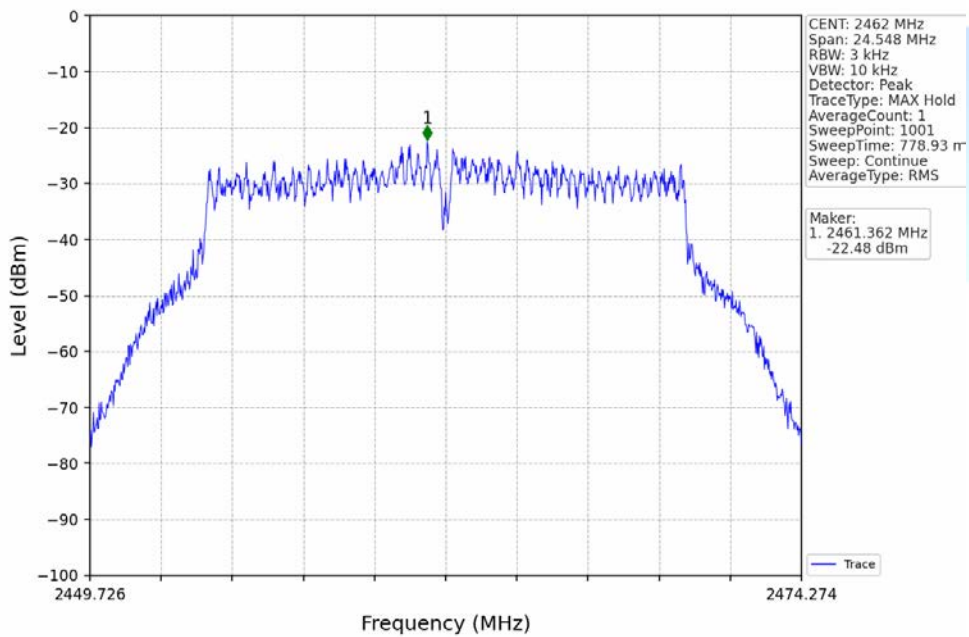
802.11g_MCH_2437MHz_Ant2 (SISO)_NTNV



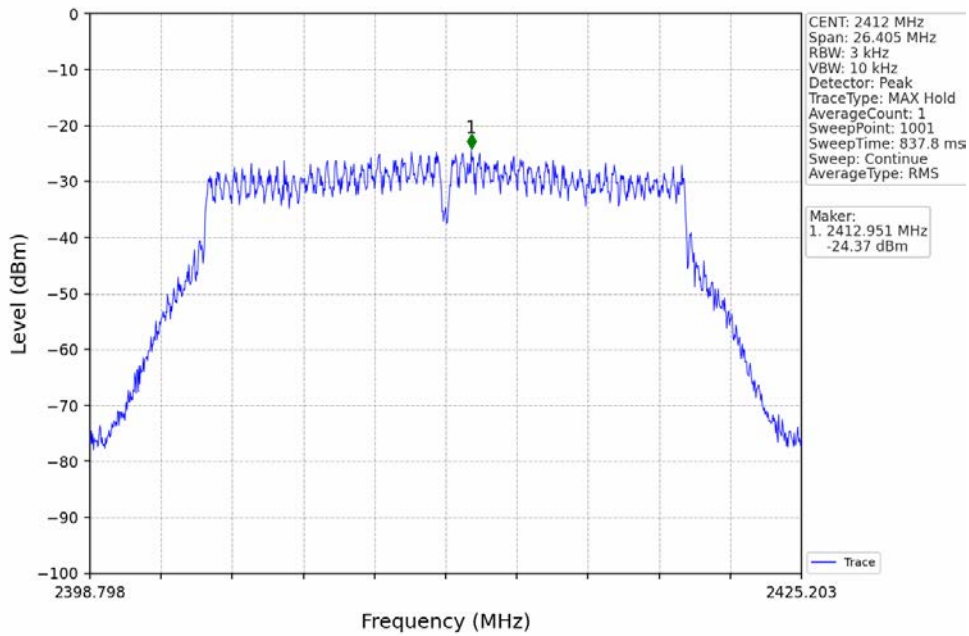
802.11g_HCH_2462MHz_Ant1 (SISO)_NTNV



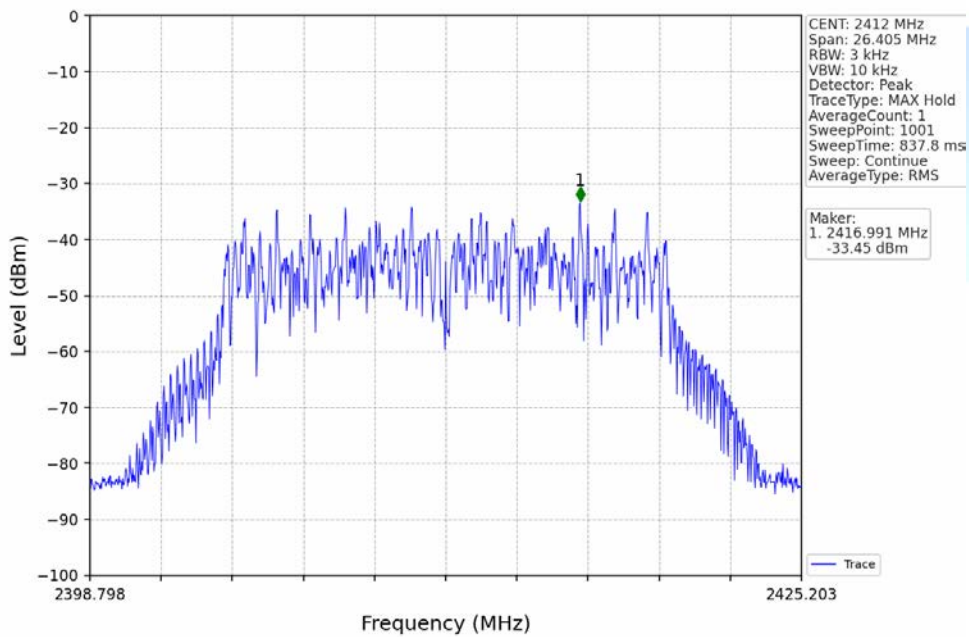
802.11g_HCH_2462MHz_Ant2 (SISO)_NTNV



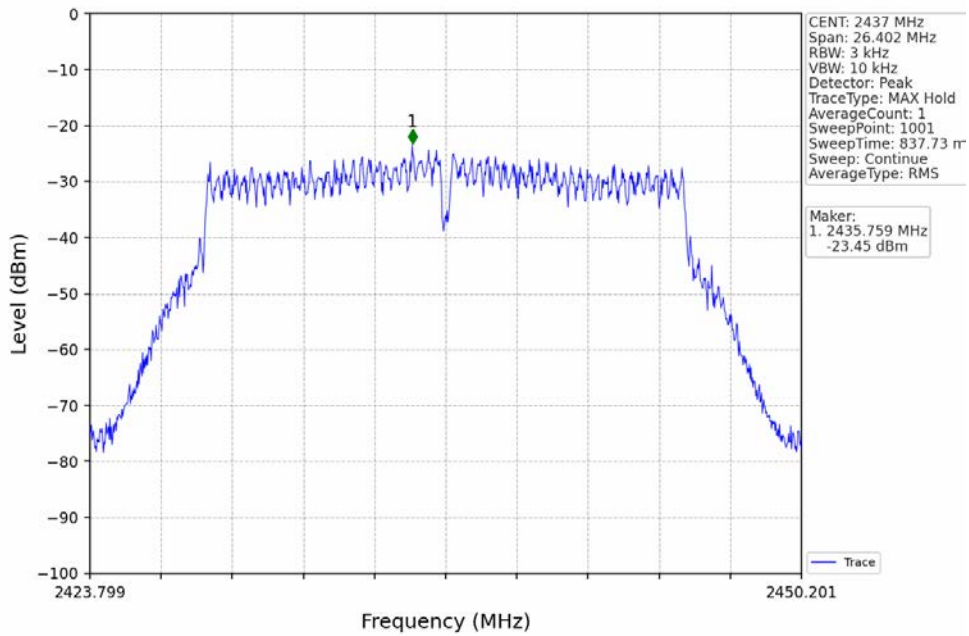
802.11n(HT20)_LCH_2412MHz_Ant1 (MIMO)_NTNV



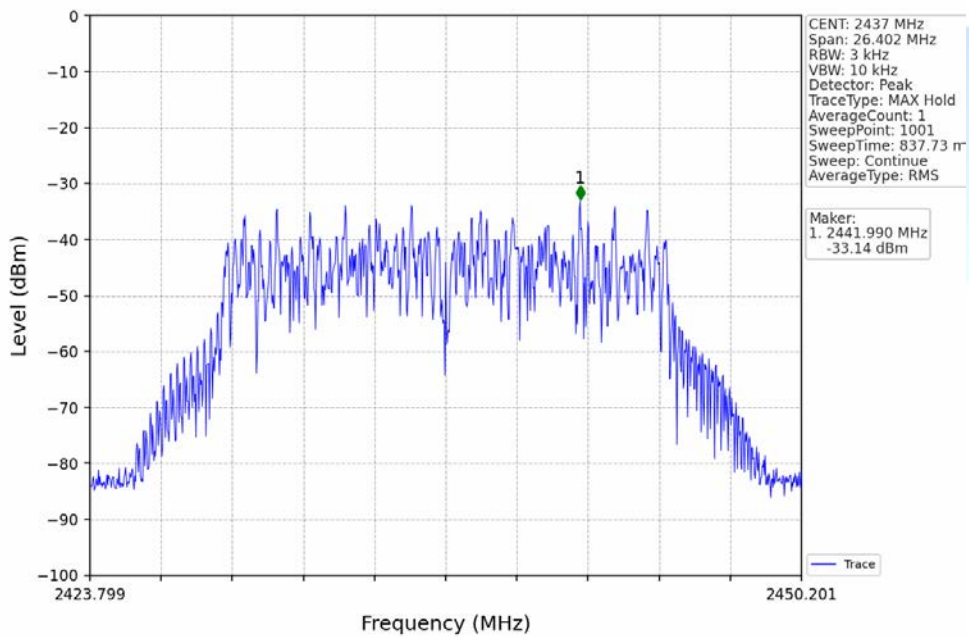
802.11n(HT20)_LCH_2412MHz_Ant2 (MIMO)_NTNV



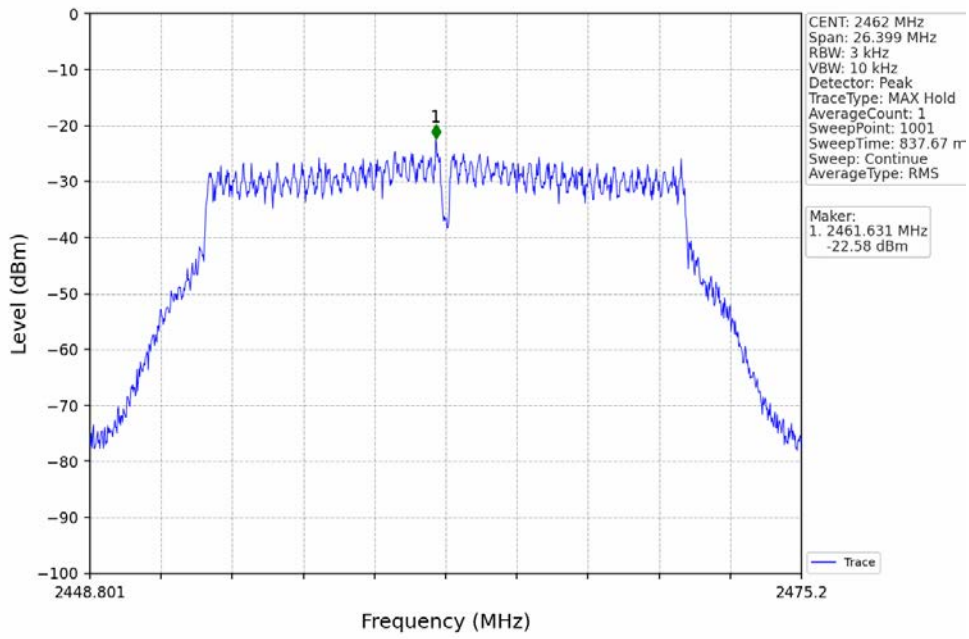
802.11n(HT20)_MCH_2437MHz_Ant1 (MIMO)_NTNV



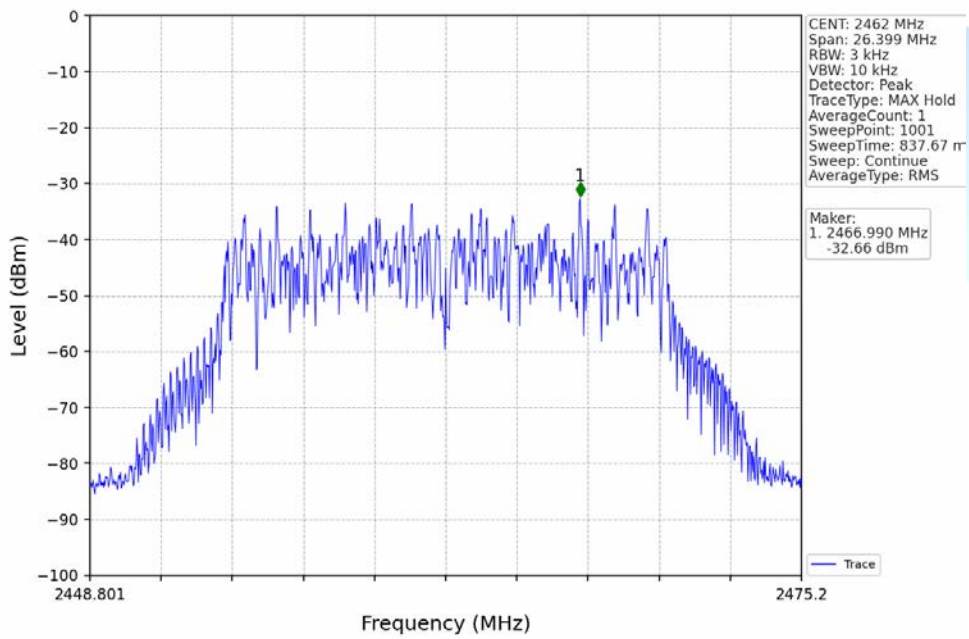
802.11n(HT20)_MCH_2437MHz_Ant2 (MIMO)_NTNV



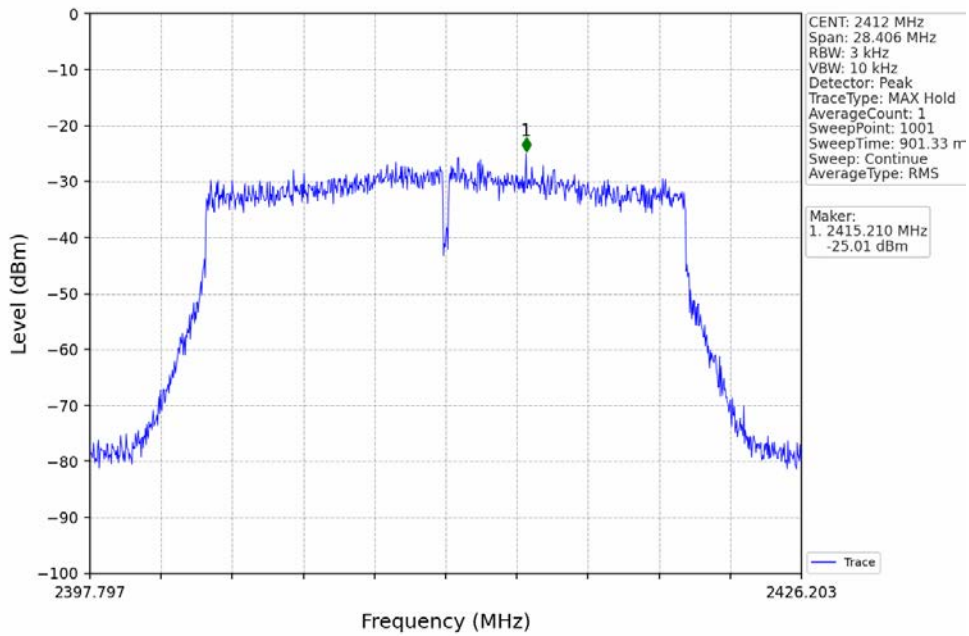
802.11n(HT20)_HCH_2462MHz_Ant1 (MIMO)_NTNV



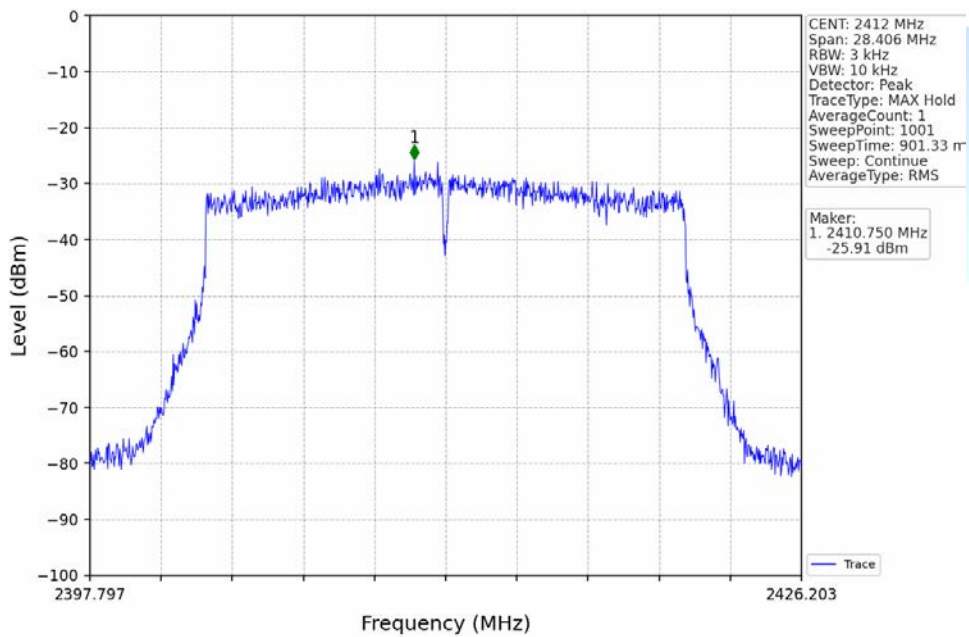
802.11n(HT20)_HCH_2462MHz_Ant2 (MIMO)_NTNV



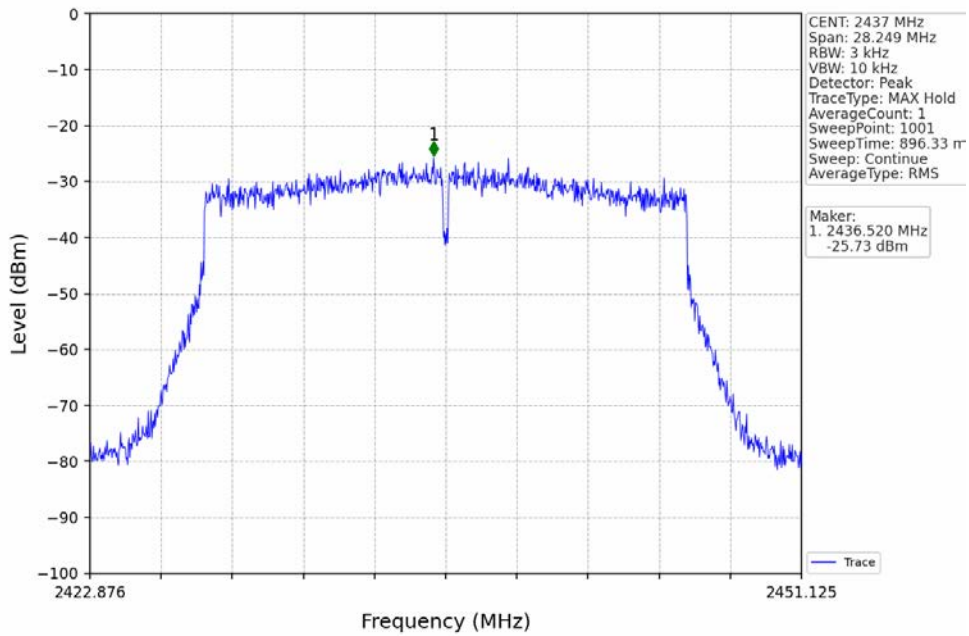
802.11ax(HEW20)_LCH_2412MHz_RU242_Left_Ant1 (MIMO)_NTNV



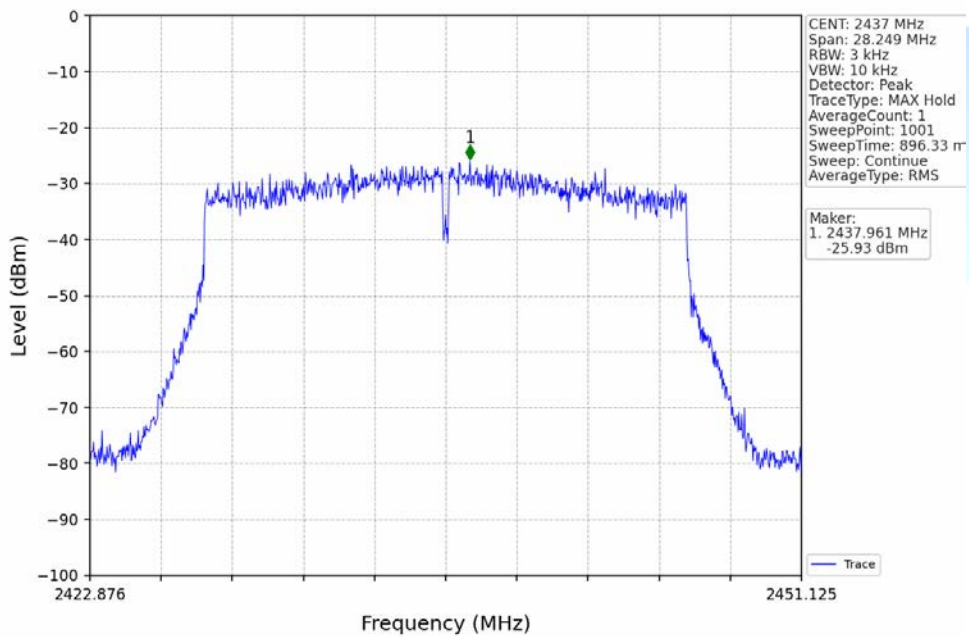
802.11ax(HEW20)_LCH_2412MHz_RU242_Left_Ant2 (MIMO)_NTNV



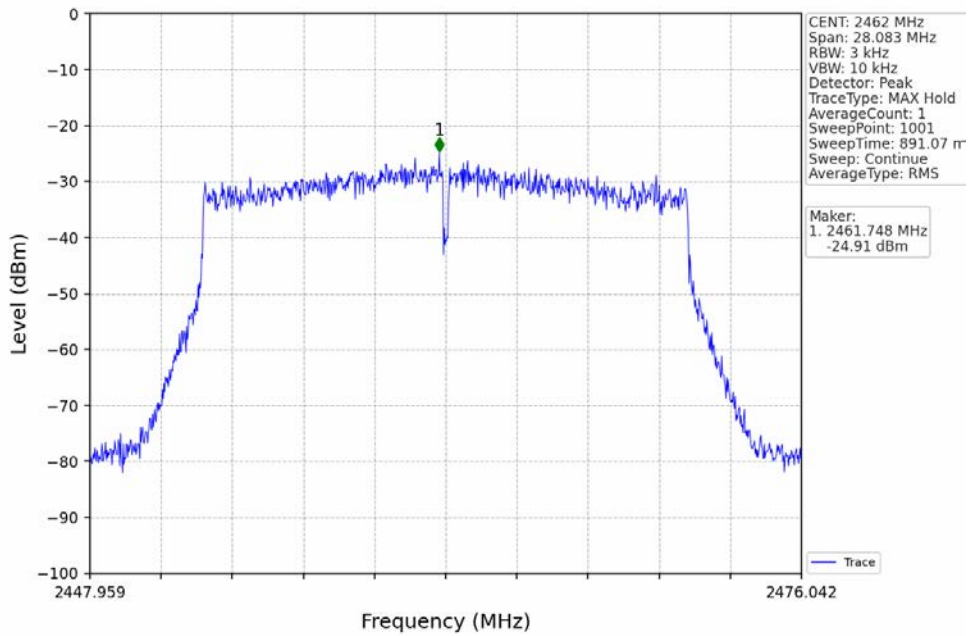
802.11ax(HEW20)_MCH_2437MHz_RU242_Left_Ant1 (MIMO)_NTNV



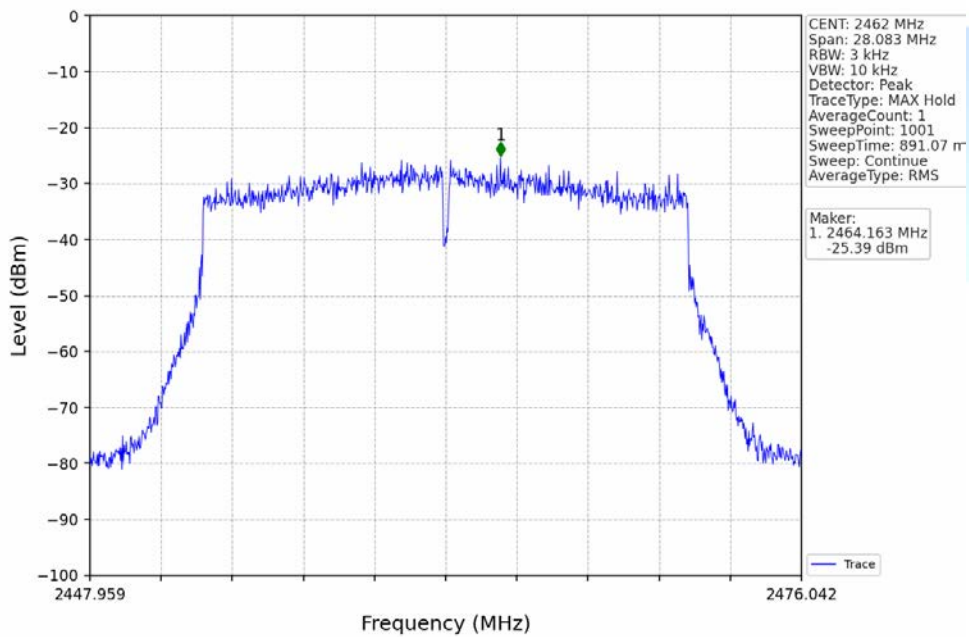
802.11ax(HEW20)_MCH_2437MHz_RU242_Left_Ant2 (MIMO)_NTNV



802.11ax(HEW20)_HCH_2462MHz_RU242_Left_Ant1 (MIMO)_NTNV



802.11ax(HEW20)_HCH_2462MHz_RU242_Left_Ant2 (MIMO)_NTNV



5. Unwanted Emissions In Non-restricted Frequency Bands

5.1 Test Result

5.1.1 Ref

Mode	TX Type	Frequency (MHz)	RU	RU Pos	ANT	Level of Reference (dBm)
802.11b	SISO	2412	/	/	1	-3.78
					2	-4.52
		2437	/	/	1	-0.87
					2	-1.75
		2462	/	/	1	-0.77
					2	-1.11
802.11g	SISO	2412	/	/	1	-10.97
					2	-10.79
		2437	/	/	1	-11.02
					2	-10.68
		2462	/	/	1	-10.66
					2	-10.13
802.11n (HT20)	MIMO	2412	/	/	1	-10.89
					2	-11.00
		2437	/	/	1	-10.83
					2	-10.73
		2462	/	/	1	-10.66
					2	-10.39
802.11ax (HEW20)	MIMO	2412	RU242	Left	1	-11.52
					2	-12.31
		2437	RU242	Left	1	-11.85
					2	-11.32
		2462	RU242	Left	1	-11.21
					2	-11.27

Note1: Refer to FCC Part 15.247 (d) and ANSI C63.10-2013, the channel contains the maximum PSD level was used to establish the reference level.

5.1.2 CSE

Mode	TX Type	Frequency (MHz)	RU	RU Pos	ANT	Level of Reference (dBm)	Limit (dBm)	Verdict
802.11b	SISO	2412	/	/	1	-0.77	-20.77	Pass
					2	-1.11	-21.11	Pass
		2437	/	/	1	-0.77	-20.77	Pass
					2	-1.11	-21.11	Pass
		2462	/	/	1	-0.77	-20.77	Pass
					2	-1.11	-21.11	Pass
802.11g	SISO	2412	/	/	1	-10.66	-30.66	Pass
					2	-10.13	-30.13	Pass
		2437	/	/	1	-10.66	-30.66	Pass
					2	-10.13	-30.13	Pass
		2462	/	/	1	-10.66	-30.66	Pass
					2	-10.13	-30.13	Pass
802.11n (HT20)	MIMO	2412	/	/	1	-10.66	-30.66	Pass
					2	-10.39	-30.39	Pass
		2437	/	/	1	-10.66	-30.66	Pass
					2	-10.39	-30.39	Pass
		2462	/	/	1	-10.66	-30.66	Pass
					2	-10.66	-30.66	Pass

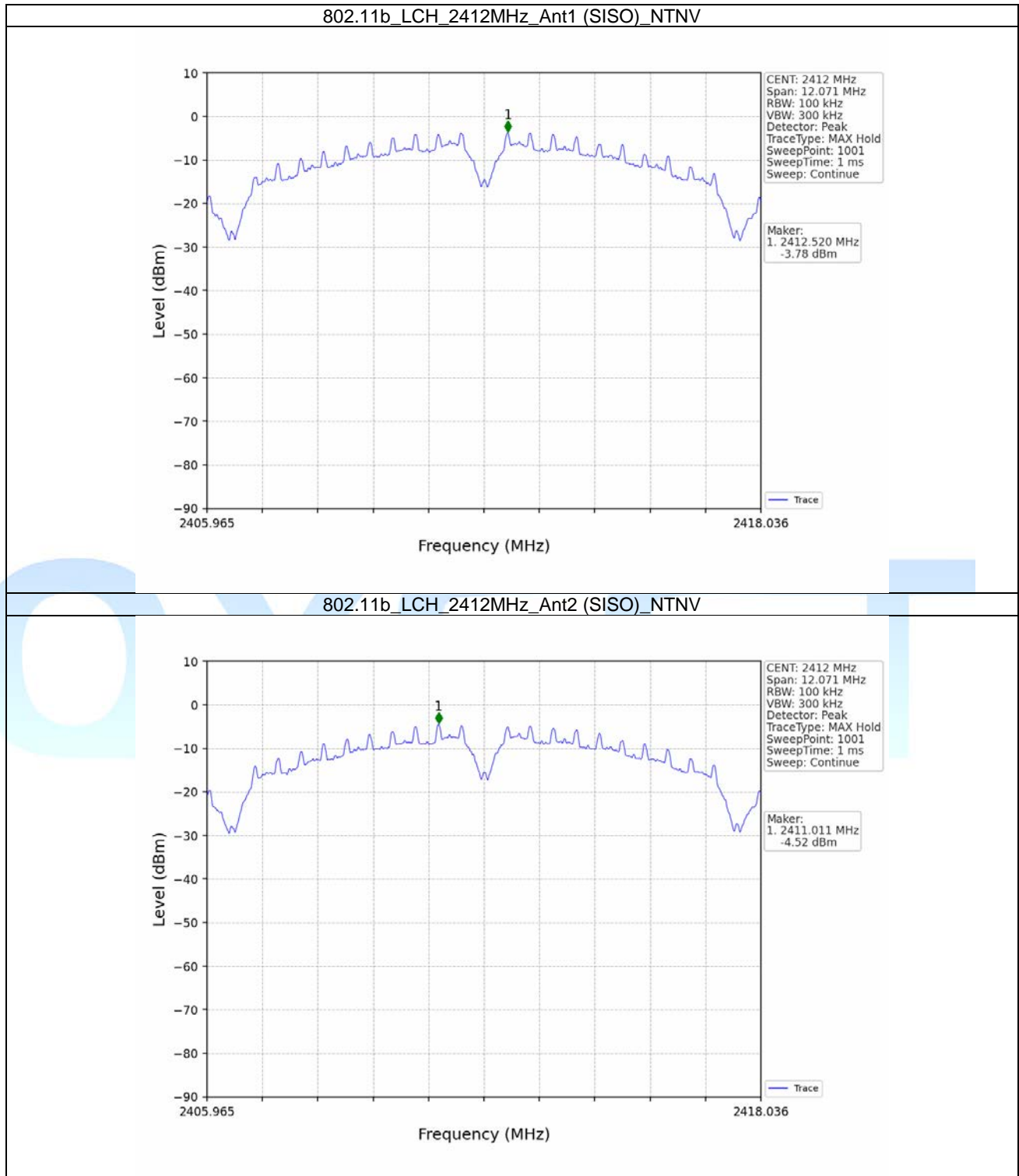
					2	-10.39	-30.39	Pass
802.11ax (HEW20)	MIMO	2412	RU242	Left	1	-11.21	-31.21	Pass
					2	-11.27	-31.27	Pass
		2437	RU242	Left	1	-11.21	-31.21	Pass
					2	-11.27	-31.27	Pass
		2462	RU242	Left	1	-11.21	-31.21	Pass
					2	-11.27	-31.27	Pass

Note1: Refer to FCC Part 15.247 (d) and ANSI C63.10-2013, the channel contains the maximum PSD level was used to establish the reference level.

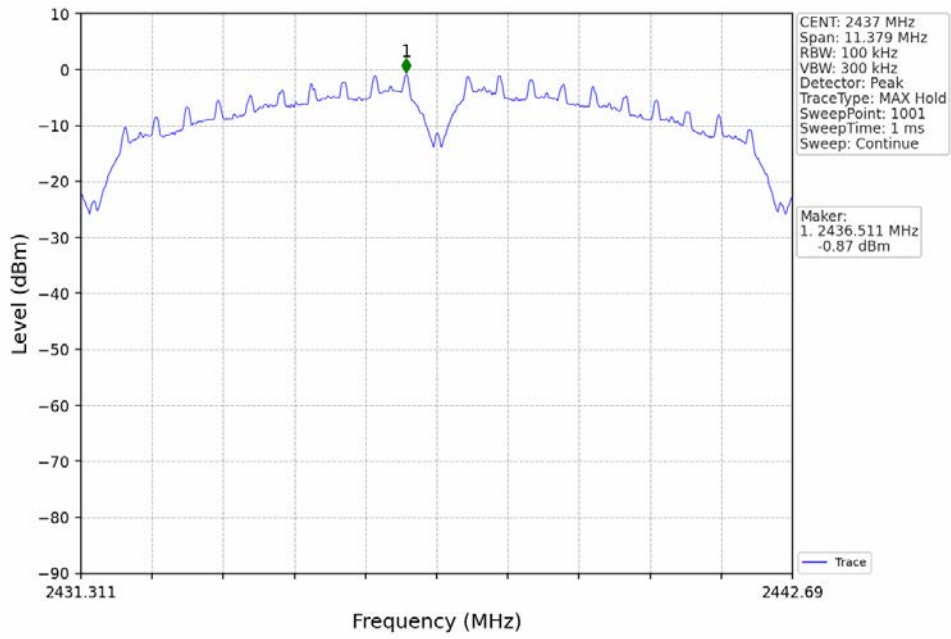


5.2 Test Graph

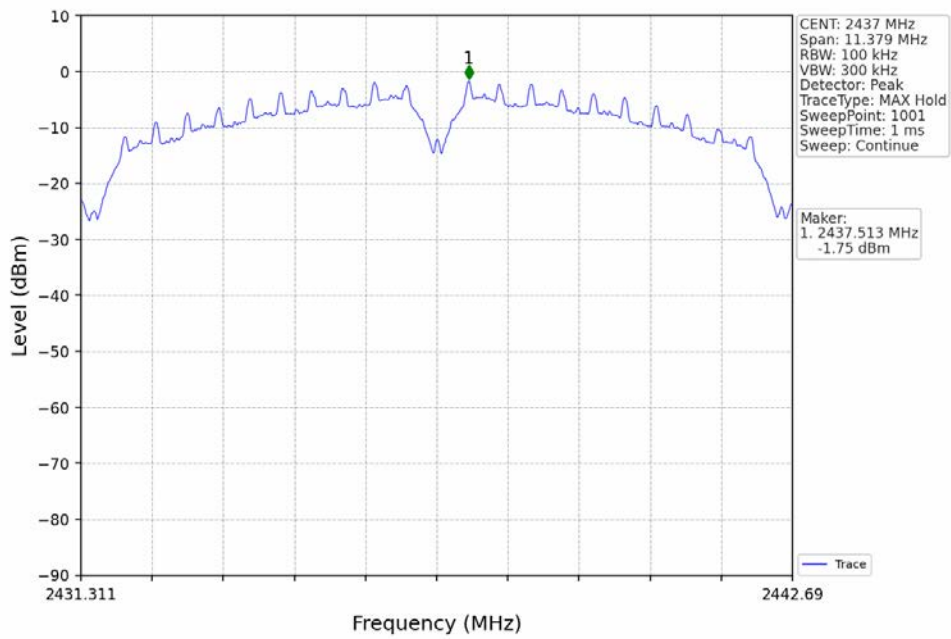
5.2.1 Ref



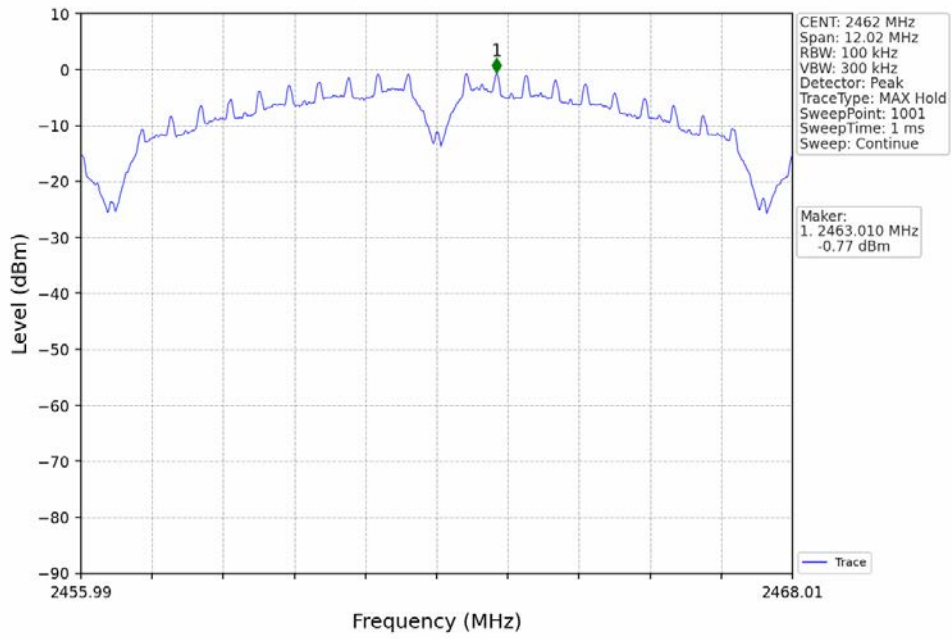
802.11b_MCH_2437MHz_Ant1 (SISO)_NTNV



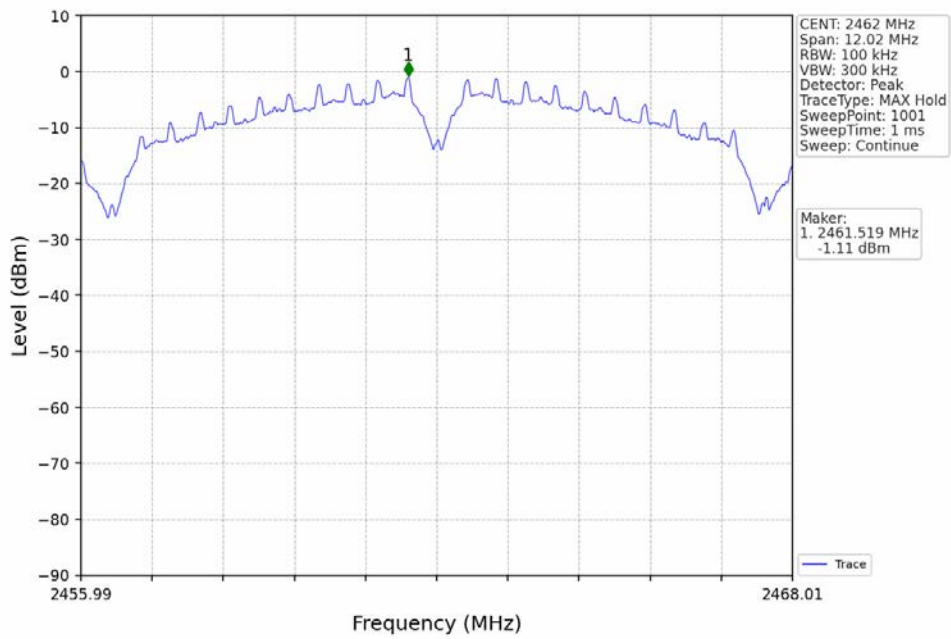
802.11b_MCH_2437MHz_Ant2 (SISO)_NTNV



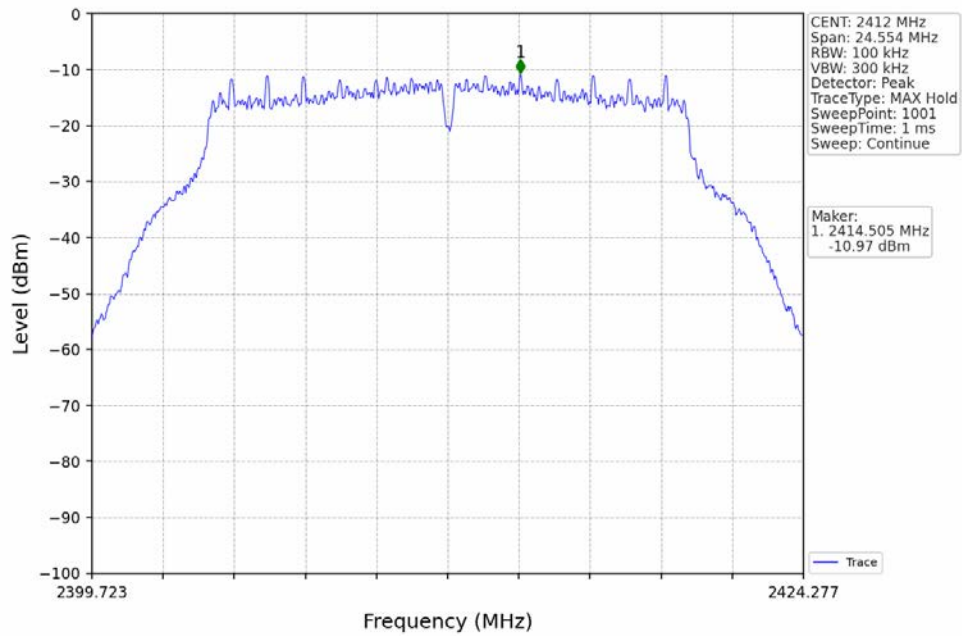
802.11b_HCH_2462MHz_Ant1 (SISO)_NTNV



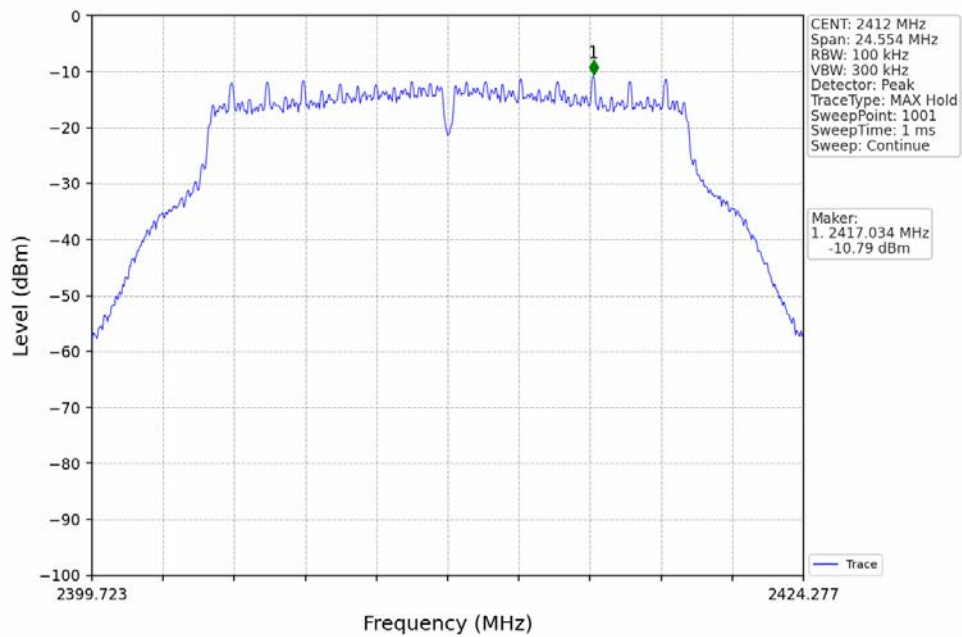
802.11b_HCH_2462MHz_Ant2 (SISO)_NTNV



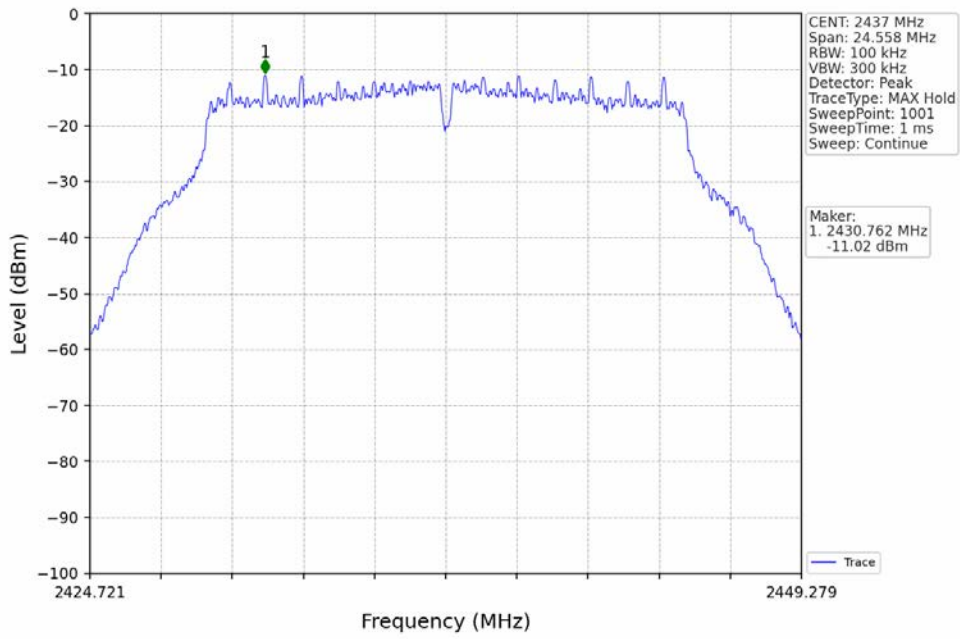
802.11g_LCH_2412MHz_Ant1 (SISO)_NTNV



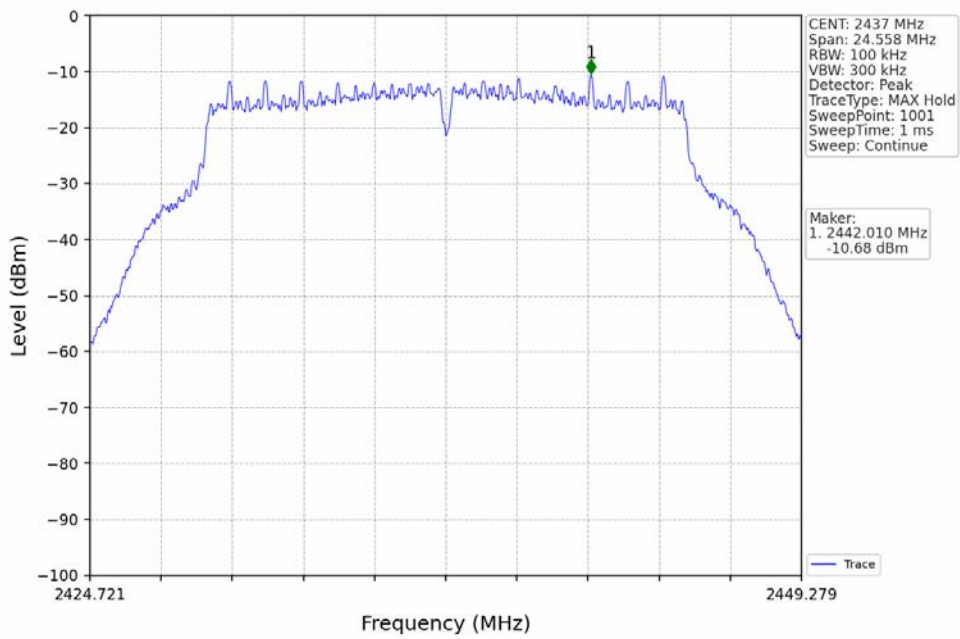
802.11g_LCH_2412MHz_Ant2 (SISO)_NTNV



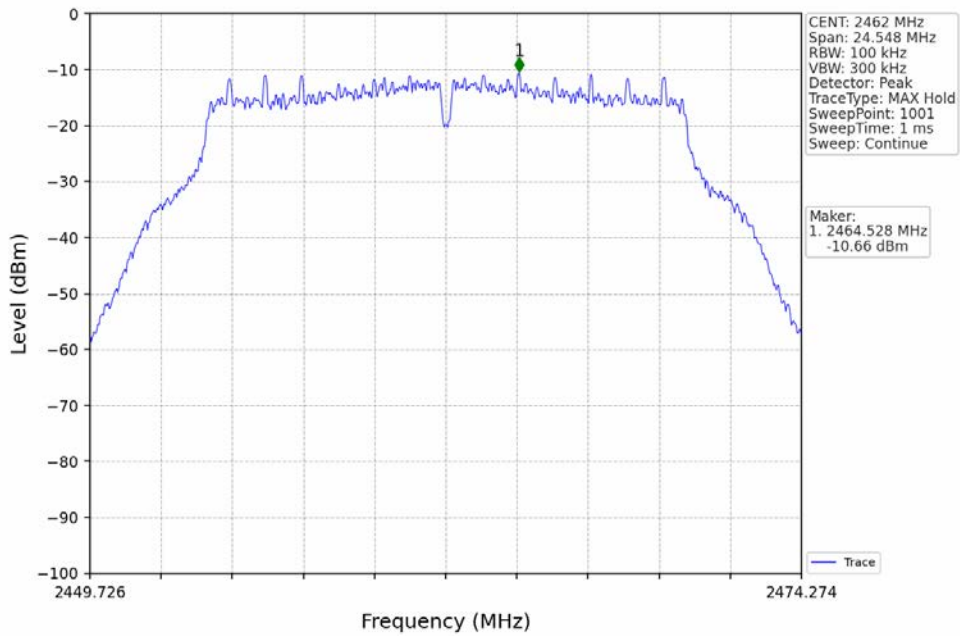
802.11g_MCH_2437MHz_Ant1 (SISO)_NTNV



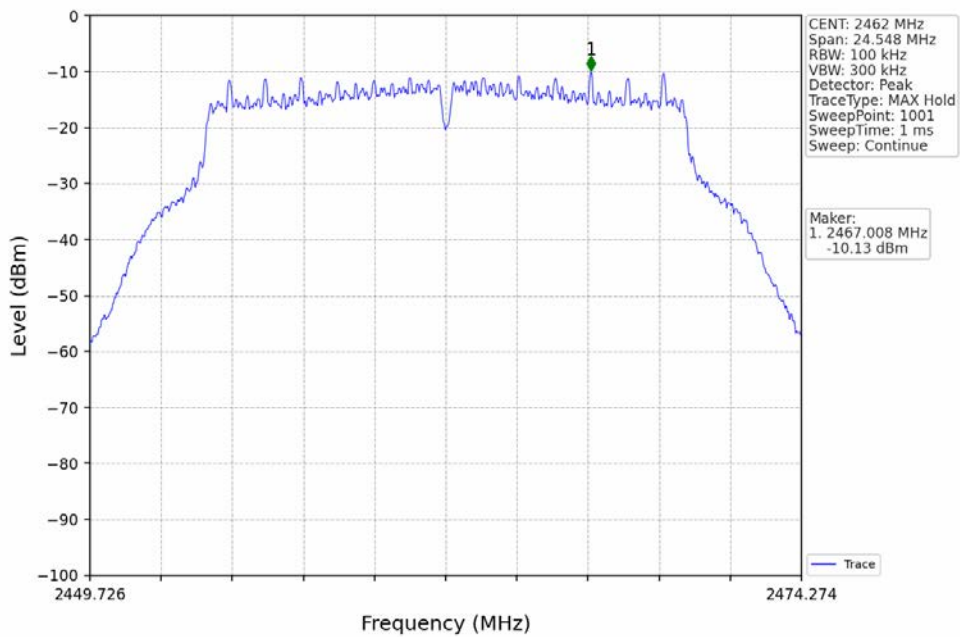
802.11g_MCH_2437MHz_Ant2 (SISO)_NTNV



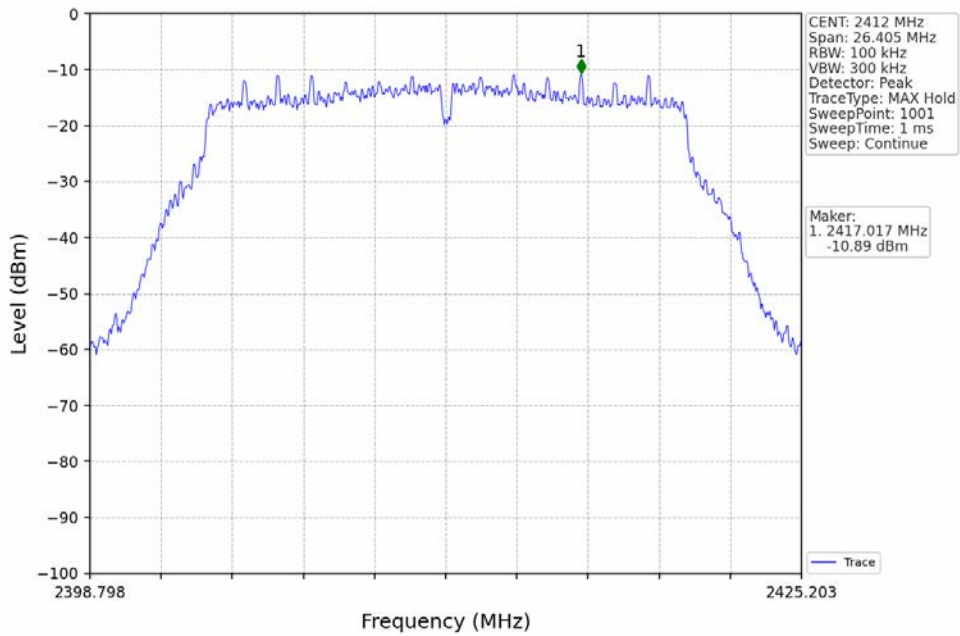
802.11g_HCH_2462MHz_Ant1 (SISO)_NTNV



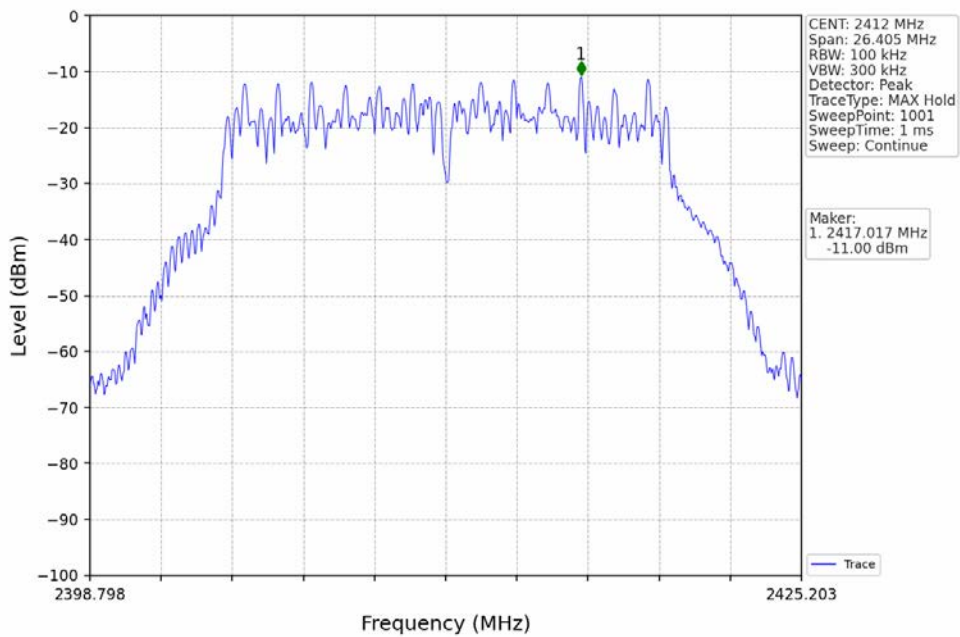
802.11g_HCH_2462MHz_Ant2 (SISO)_NTNV



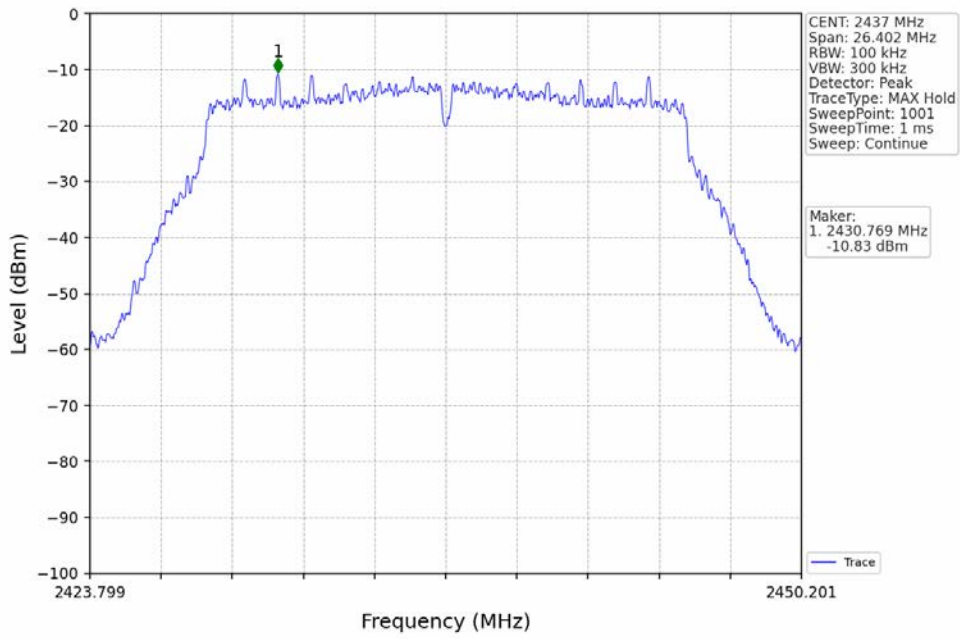
802.11n(HT20)_LCH_2412MHz_Ant1 (MIMO)_NTNV



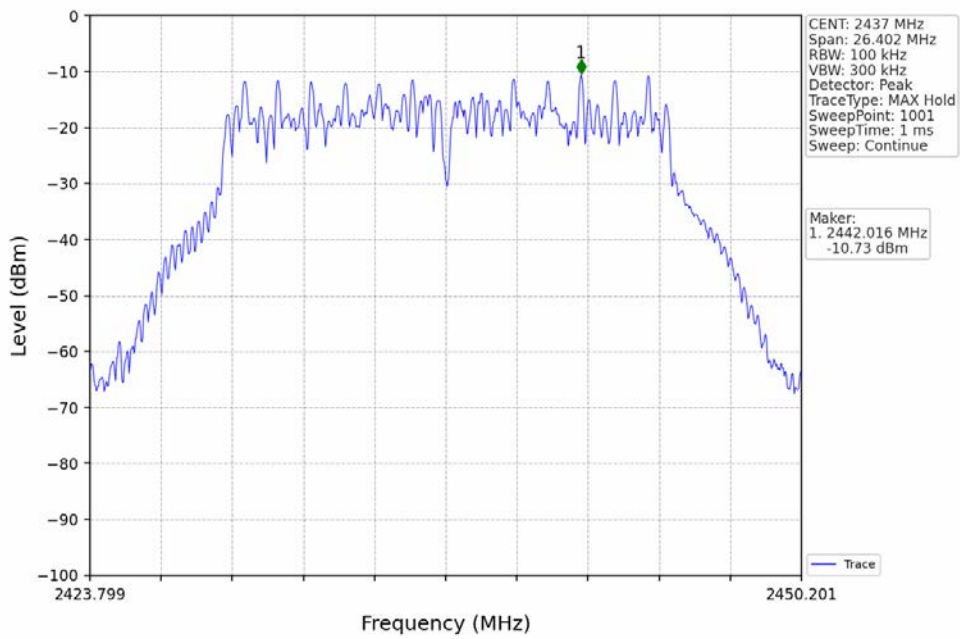
802.11n(HT20)_LCH_2412MHz_Ant2 (MIMO)_NTNV



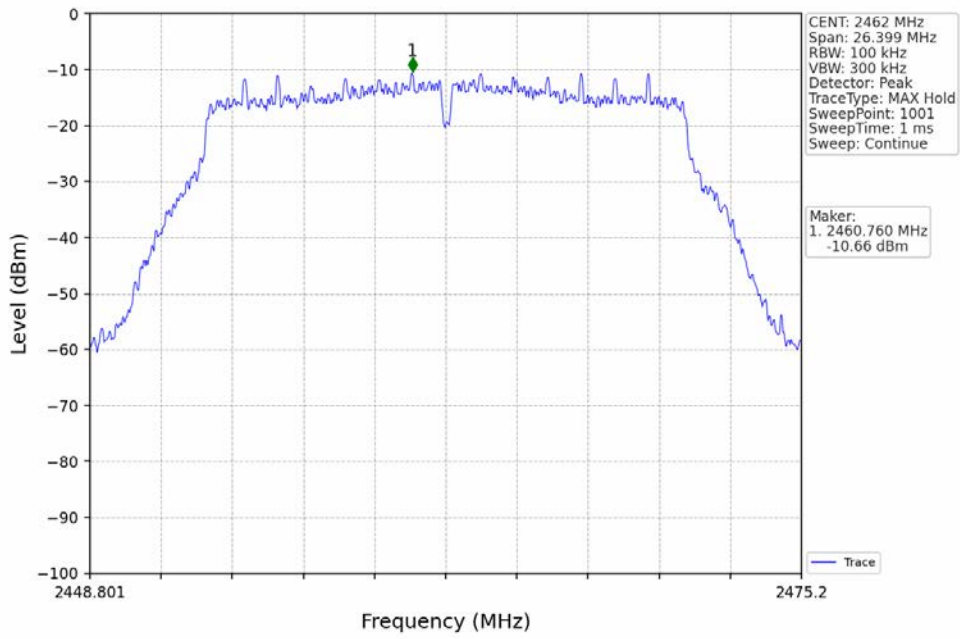
802.11n(HT20)_MCH_2437MHz_Ant1 (MIMO)_NTNV



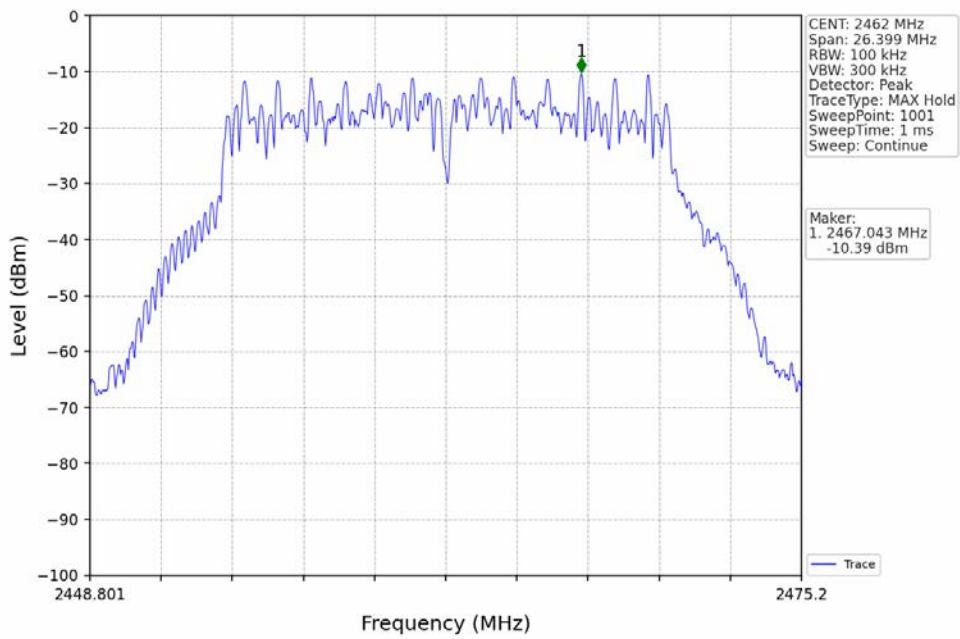
802.11n(HT20)_MCH_2437MHz_Ant2 (MIMO)_NTNV



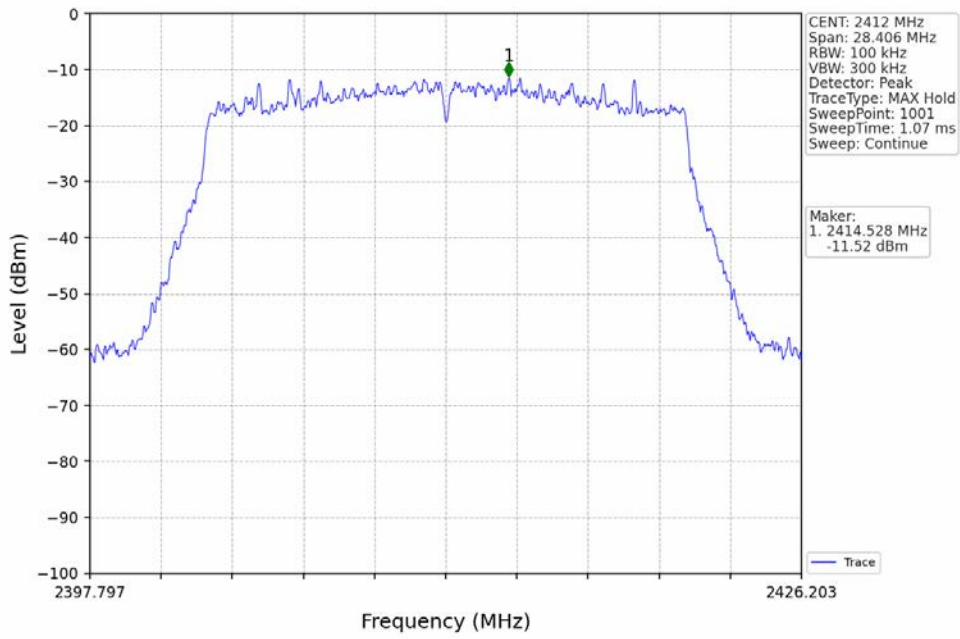
802.11n(HT20)_HCH_2462MHz_Ant1 (MIMO)_NTNV



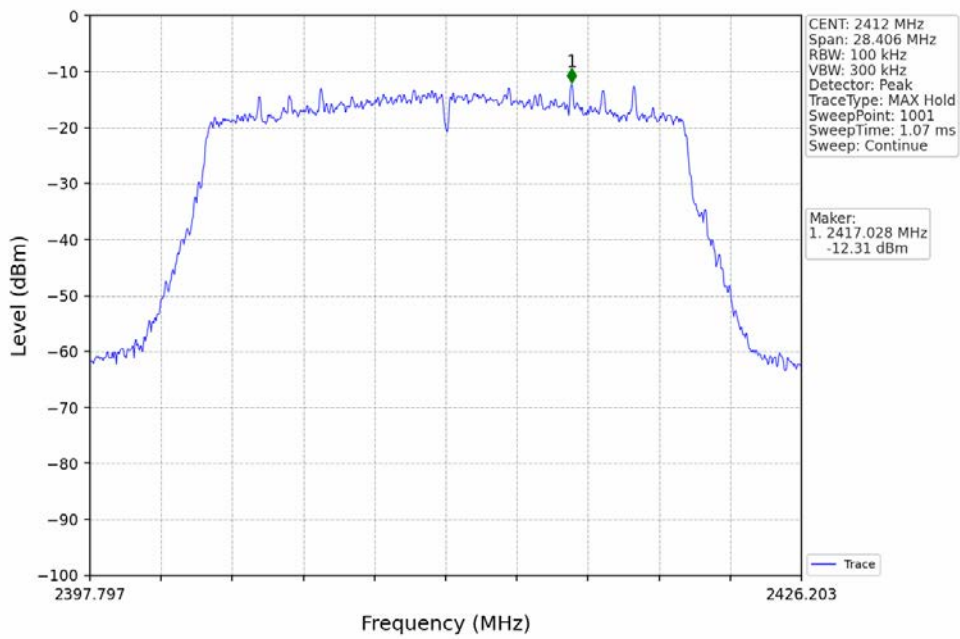
802.11n(HT20)_HCH_2462MHz_Ant2 (MIMO)_NTNV



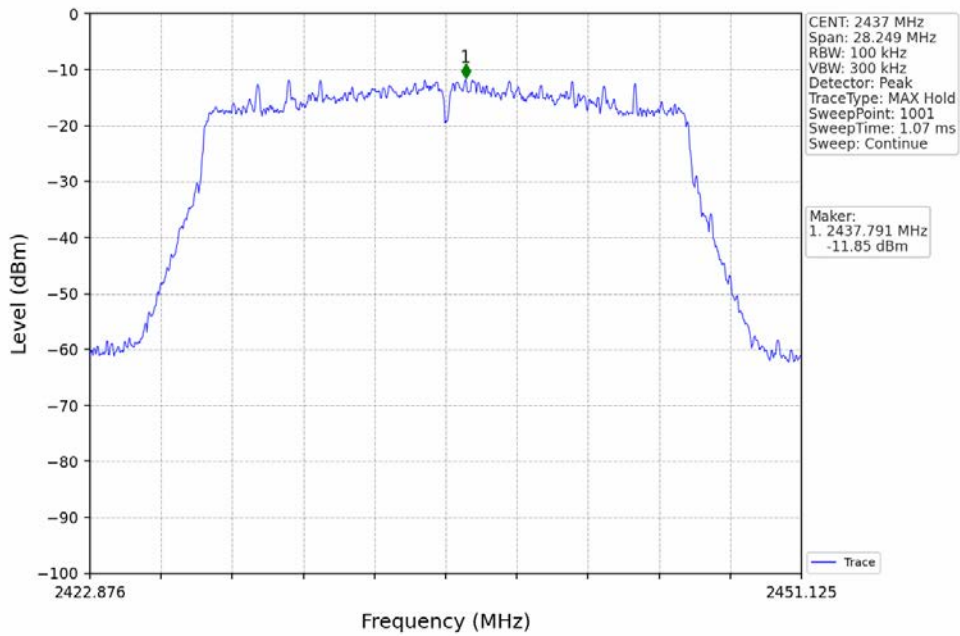
802.11ax(HEW20)_LCH_2412MHz_RU242_Left_Ant1 (MIMO)_NTNV



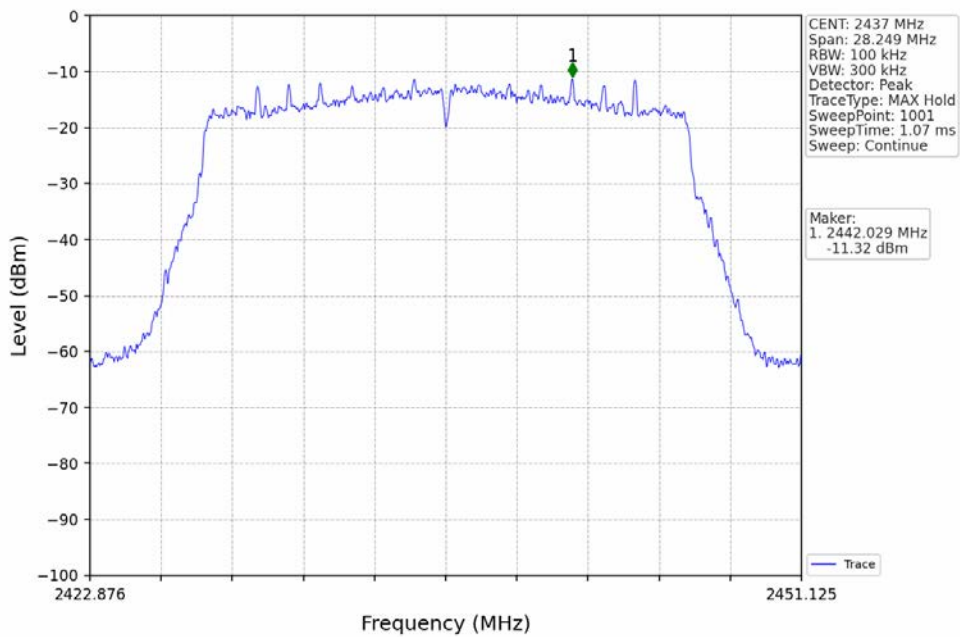
802.11ax(HEW20)_LCH_2412MHz_RU242_Left_Ant2 (MIMO)_NTNV



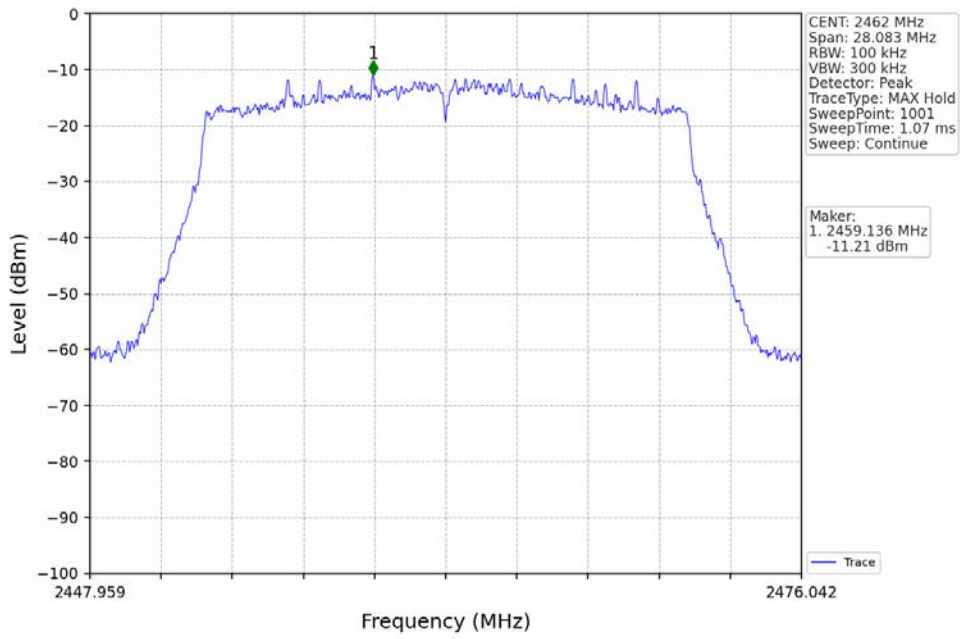
802.11ax(HEW20)_MCH_2437MHz_RU242_Left_Ant1 (MIMO)_NTNV



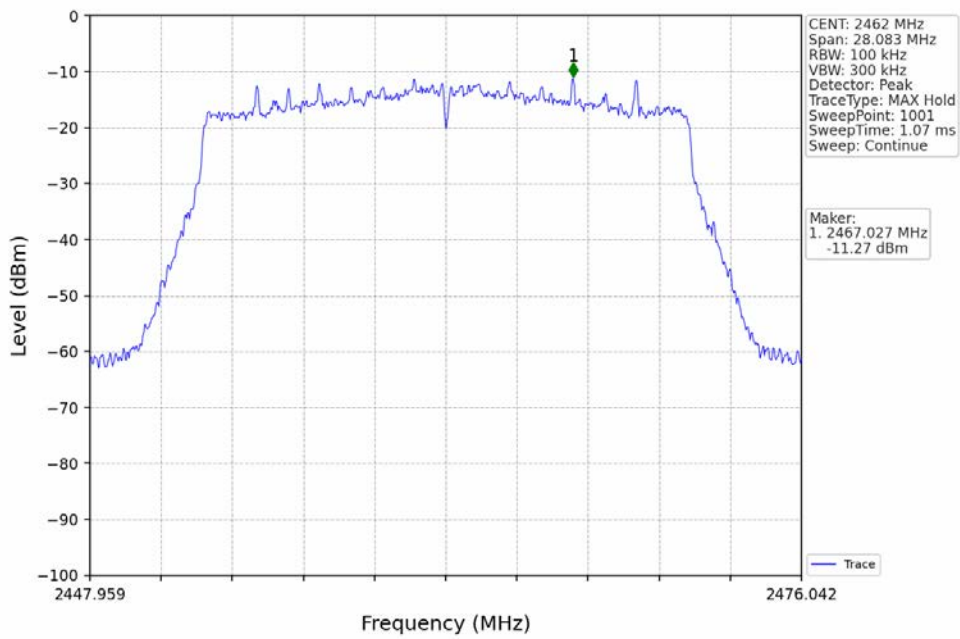
802.11ax(HEW20)_MCH_2437MHz_RU242_Left_Ant2 (MIMO)_NTNV



802.11ax(HEW20)_HCH_2462MHz_RU242_Left_Ant1 (MIMO)_NTNV



802.11ax(HEW20)_HCH_2462MHz_RU242_Left_Ant2 (MIMO)_NTNV



5.2.2 CSE

