

1. Duty Cycle

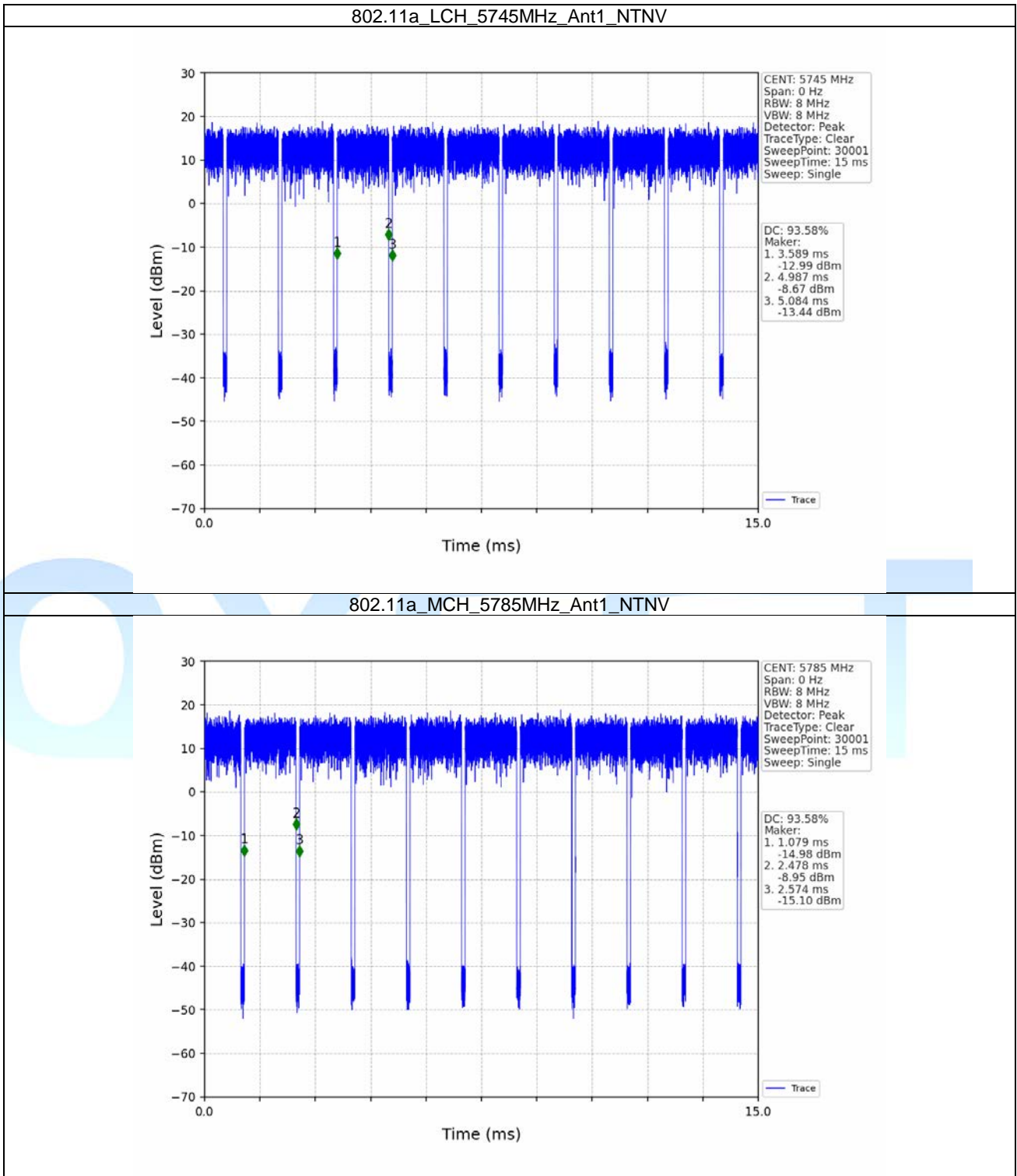
1.1 Test Result

1.1.1 Ant1

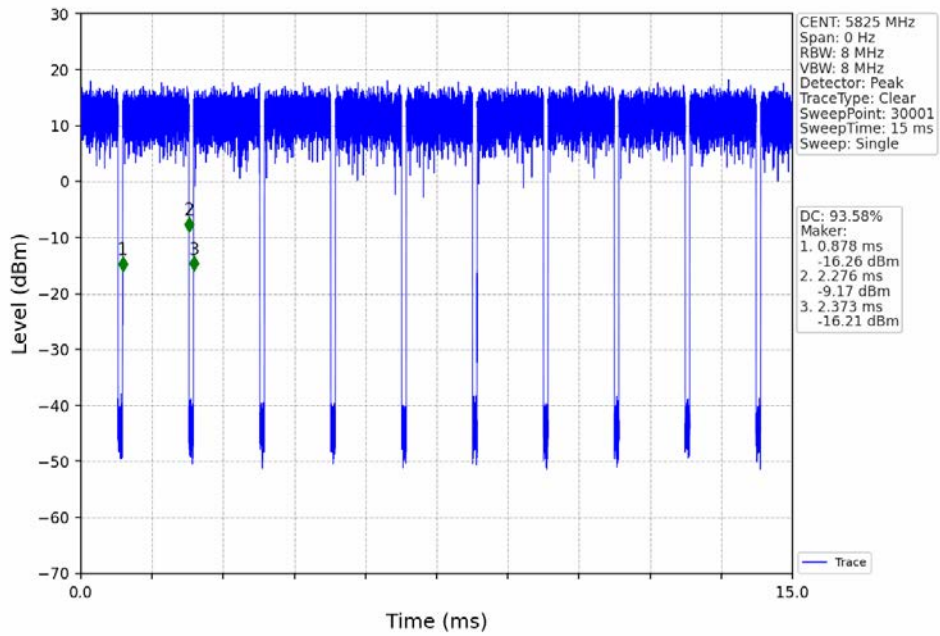
Ant1									
Mode	TX Type	Frequency (MHz)	RU	RU Pos	T_on (ms)	Period (ms)	Duty Cycle (%)	Duty Cycle Correction Factor (dB)	Max. DC Variation (%)
802.11a	SISO	5745	/	/	1.399	1.495	93.58	0.29	0.03
		5785	/	/	1.399	1.495	93.58	0.29	0.03
		5825	/	/	1.399	1.495	93.58	0.29	0.03
802.11n (HT20)	MIMO	5745	/	/	1.310	1.406	93.17	0.31	0.03
		5785	/	/	1.310	1.406	93.17	0.31	0.03
		5825	/	/	1.308	1.407	92.96	0.32	0.03
802.11n (HT40)	MIMO	5755	/	/	0.651	0.747	87.15	0.60	0.03
		5795	/	/	0.648	0.747	86.75	0.62	0.03
802.11ac (VHT20)	MIMO	5745	/	/	1.316	1.415	93.00	0.32	0.03
		5785	/	/	1.318	1.415	93.14	0.31	0.06
		5825	/	/	1.319	1.415	93.22	0.31	0.00
802.11ac (VHT40)	MIMO	5755	/	/	0.659	0.755	87.28	0.59	0.04
		5795	/	/	0.656	0.755	86.89	0.61	0.07
802.11ac (VHT80)	MIMO	5775	/	/	0.327	0.423	77.30	1.12	0.03
802.11ax (HEW20)	MIMO	5745	RU242	Left	1.023	1.119	91.42	0.39	0.00
		5785	RU242	Left	1.021	1.120	91.16	0.40	0.03
		5825	RU242	Left	1.020	1.119	91.15	0.40	0.03
802.11ax (HEW40)	MIMO	5755	RU484	Left	0.544	0.640	85.00	0.71	0.00
		5795	RU484	Left	0.544	0.640	85.00	0.71	0.03
802.11ax (HEW80)	MIMO	5775	RU996	Left	0.294	0.390	75.38	1.23	0.07

1.2 Test Graph

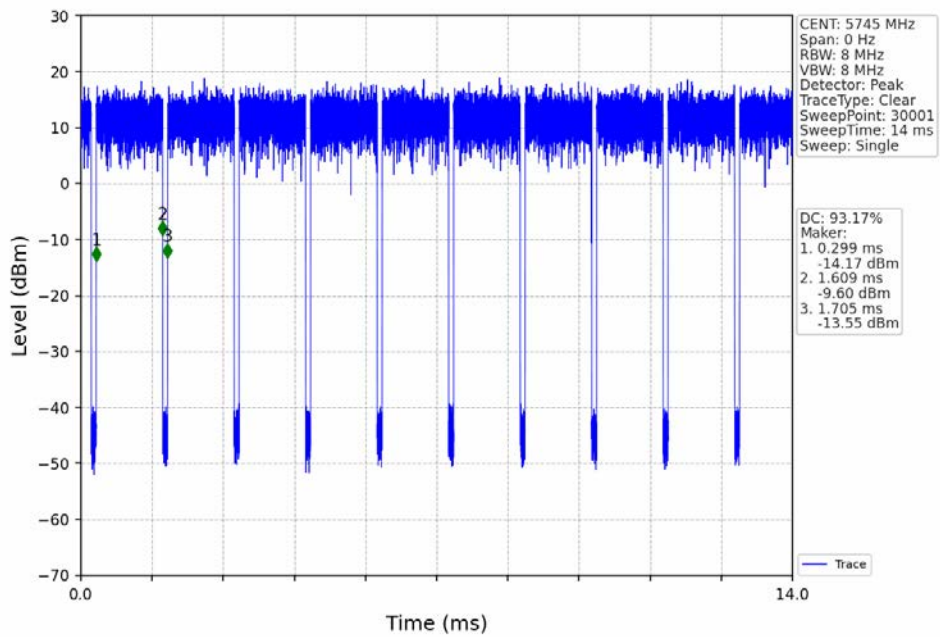
1.2.1 Ant1



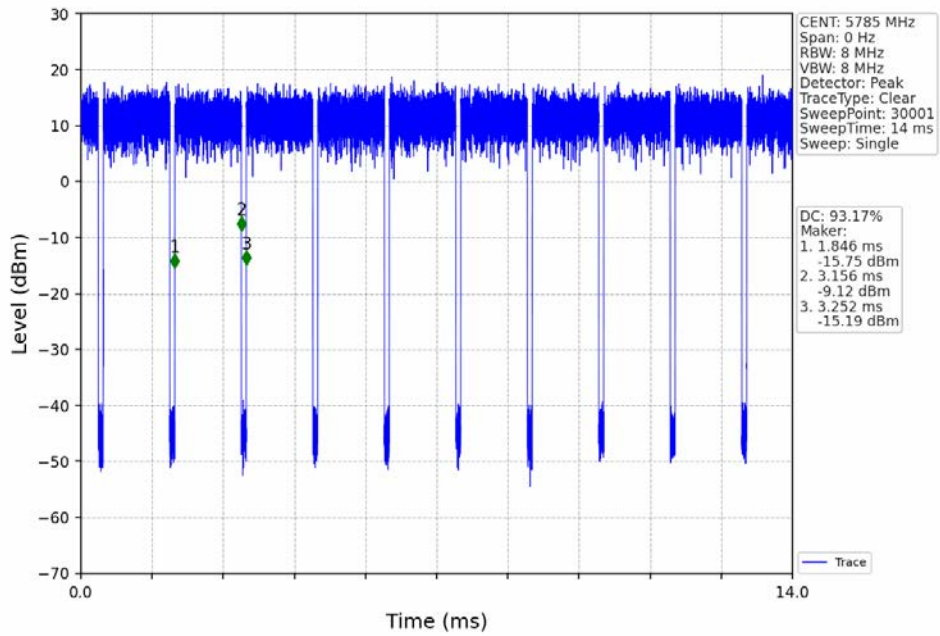
802.11a_HCH_5825MHz_Ant1_NTNV



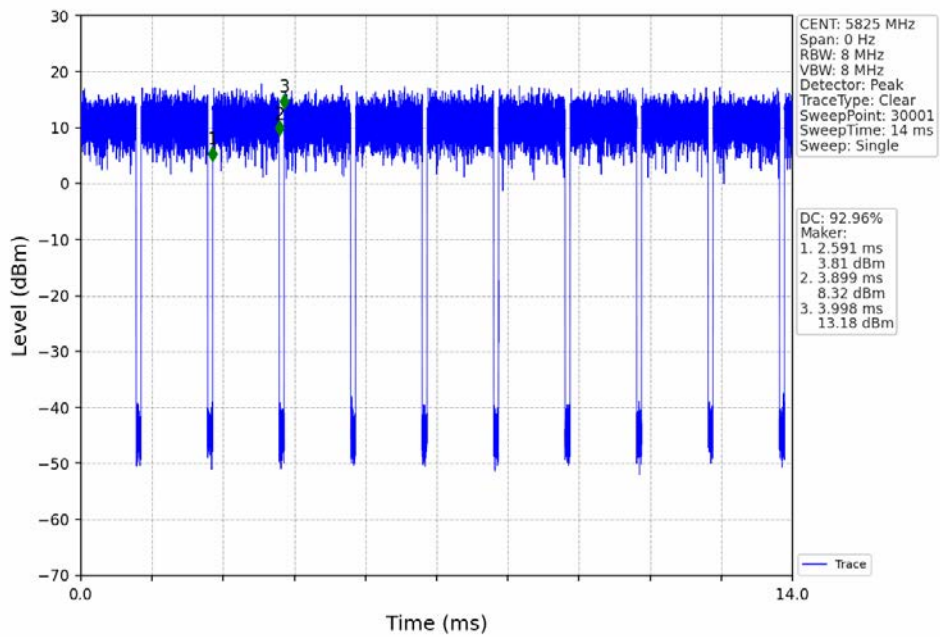
802.11n(HT20)_LCH_5745MHz_Ant1_NTNV



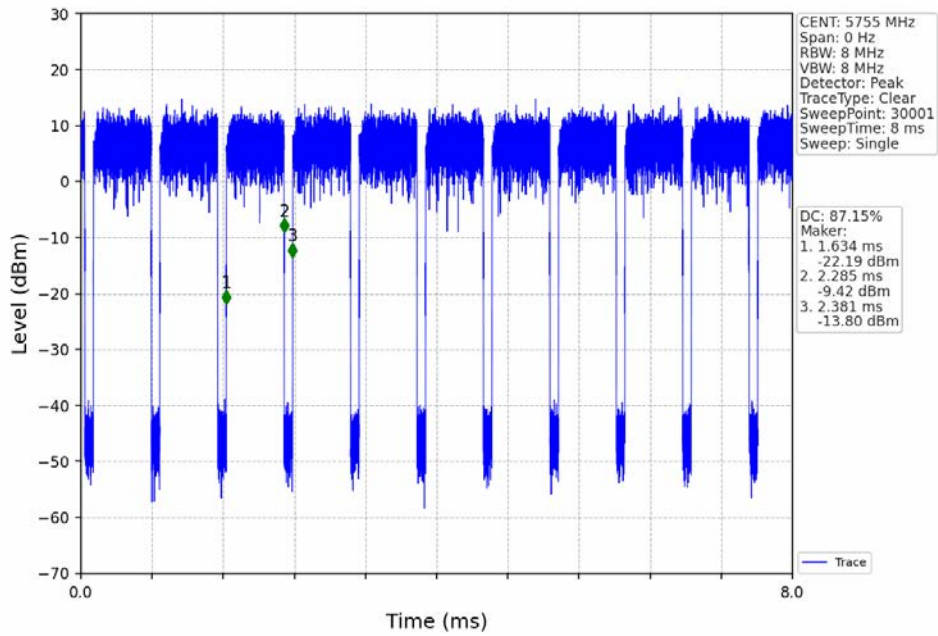
802.11n(HT20)_MCH_5785MHz_Ant1_NTNV



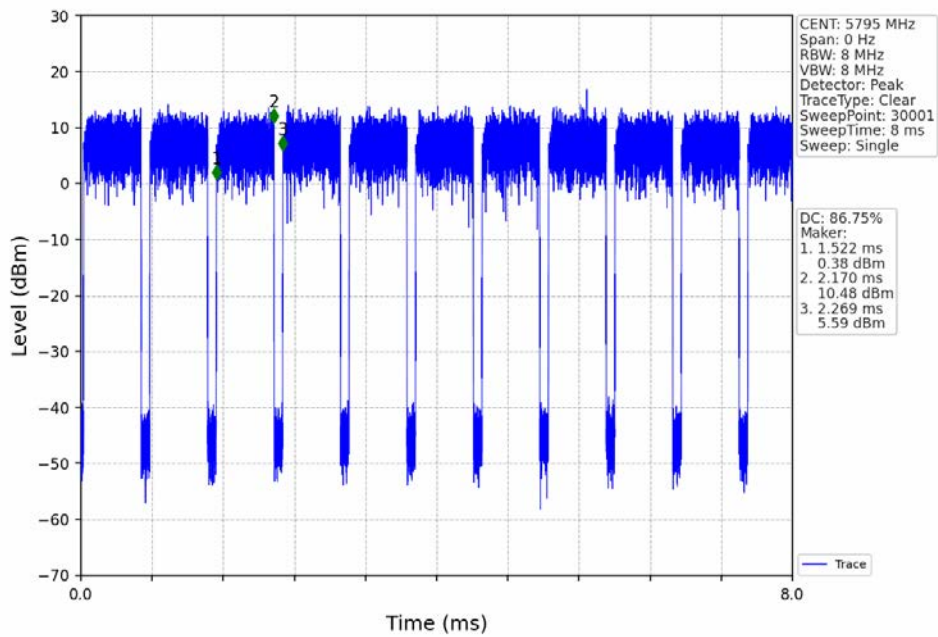
802.11n(HT20)_HCH_5825MHz_Ant1_NTNV



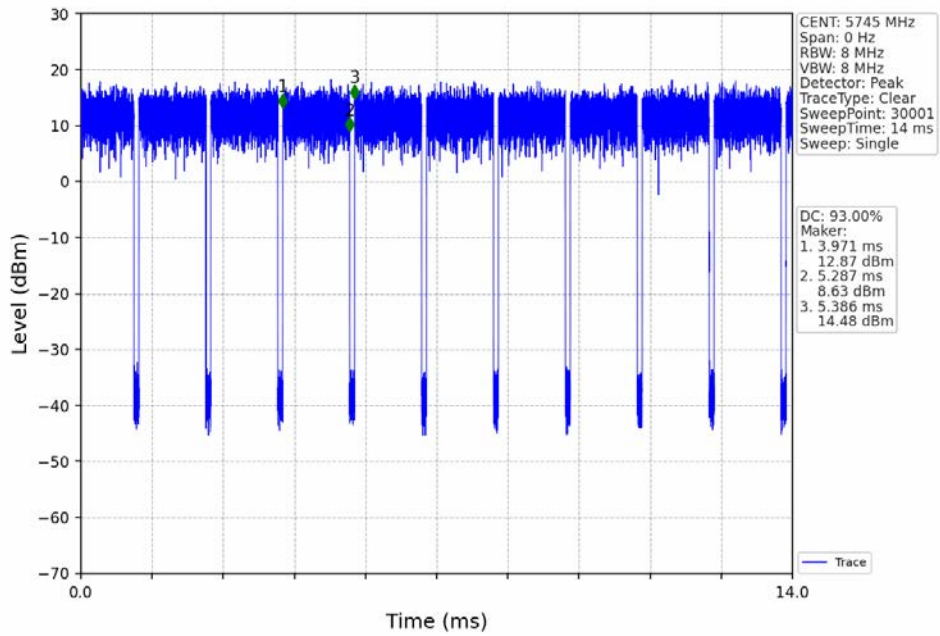
802.11n(HT40)_LCH_5755MHz_Ant1_NTNV



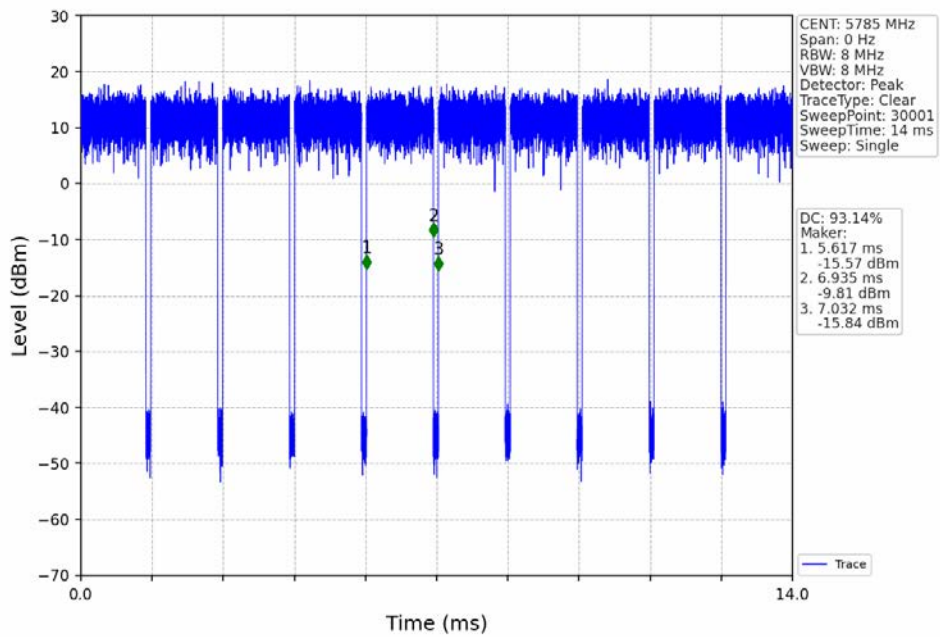
802.11n(HT40)_HCH_5795MHz_Ant1_NTNV



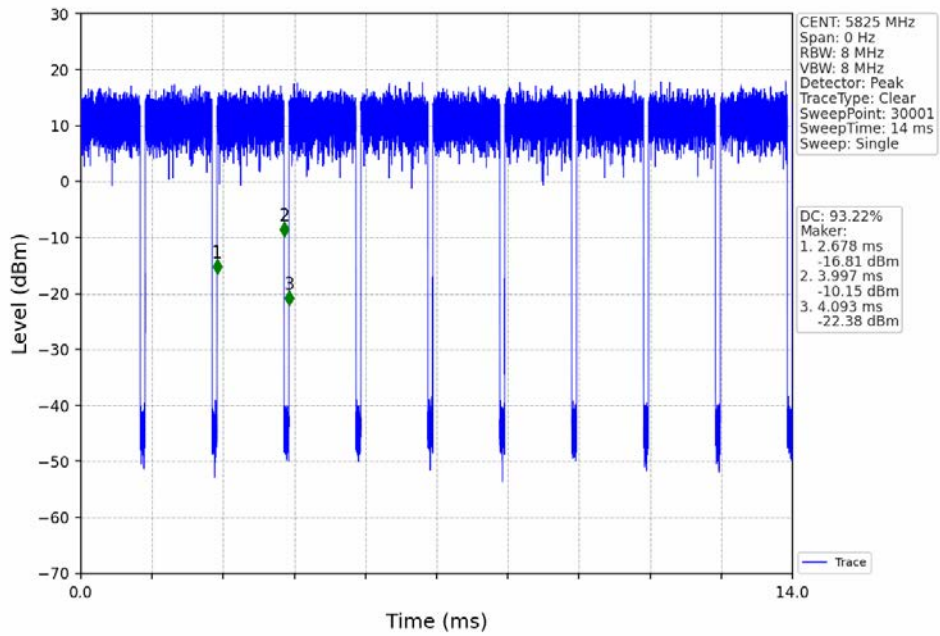
802.11ac(VHT20)_LCH_5745MHz_Ant1_NTNV



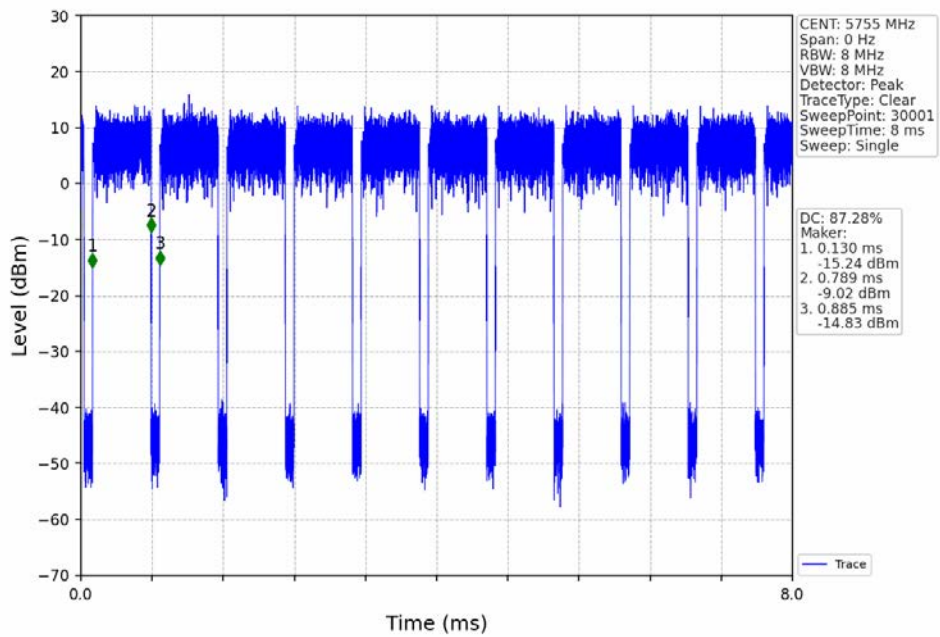
802.11ac(VHT20)_MCH_5785MHz_Ant1_NTNV



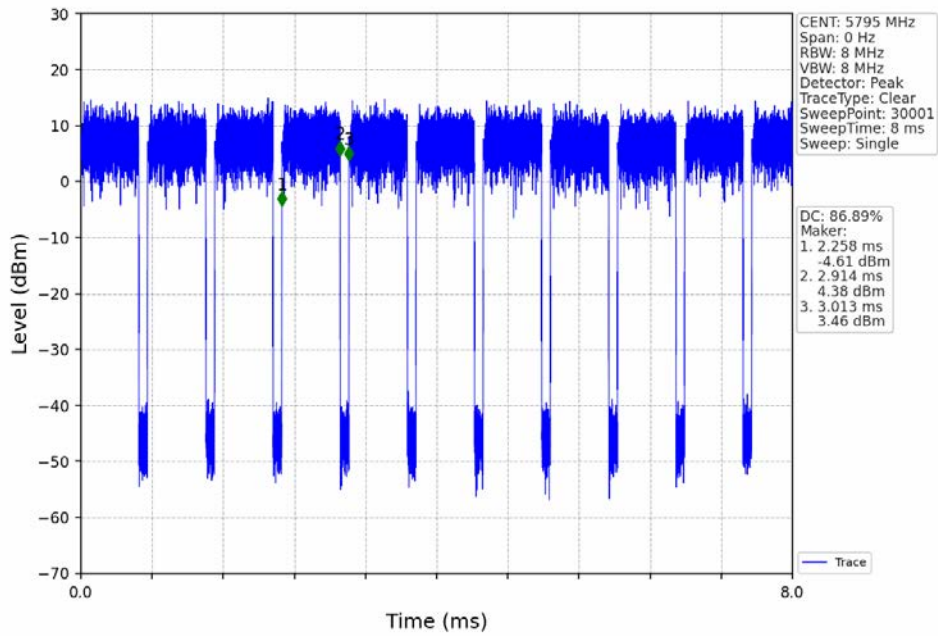
802.11ac(VHT20)_HCH_5825MHz_Ant1_NTNV



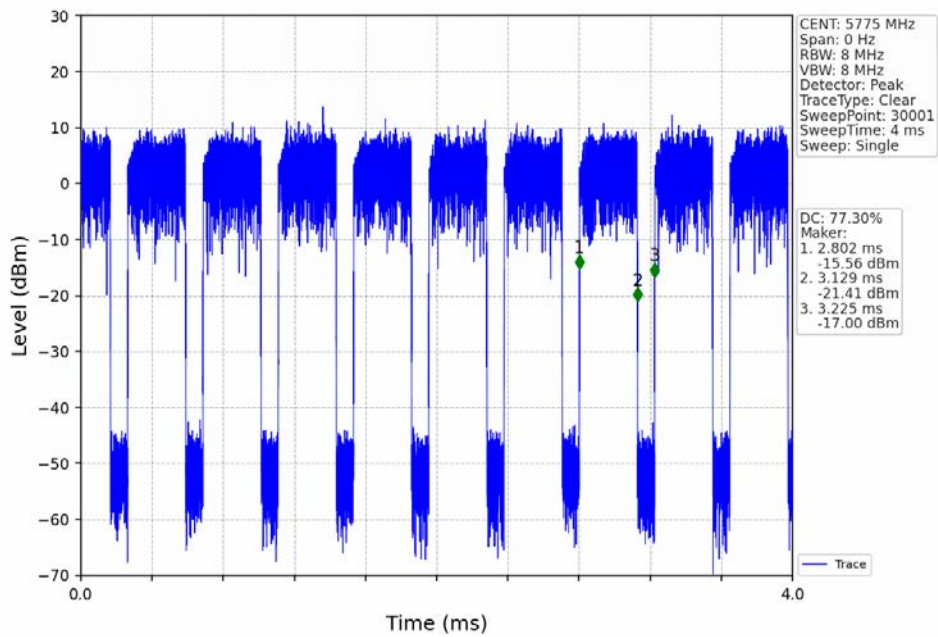
802.11ac(VHT40)_LCH_5755MHz_Ant1_NTNV



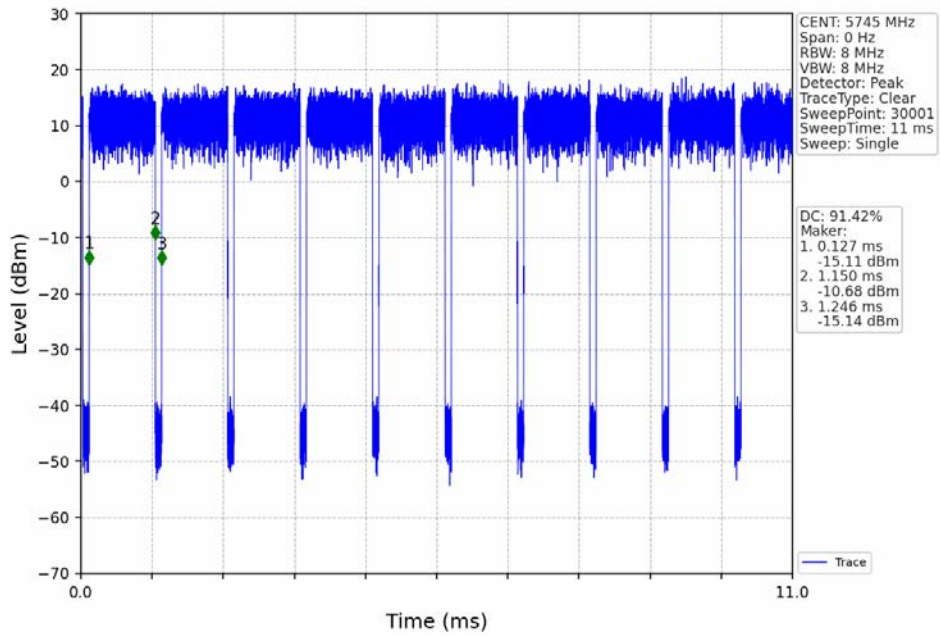
802.11ac(VHT40)_HCH_5795MHz_Ant1_NTNV



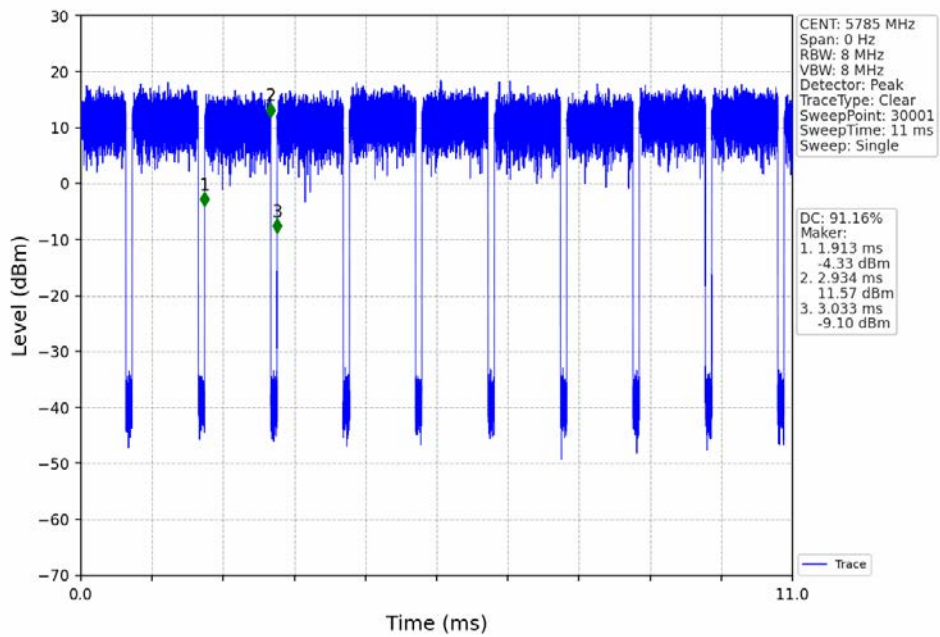
802.11ac(VHT80)_MCH_5775MHz_Ant1_NTNV



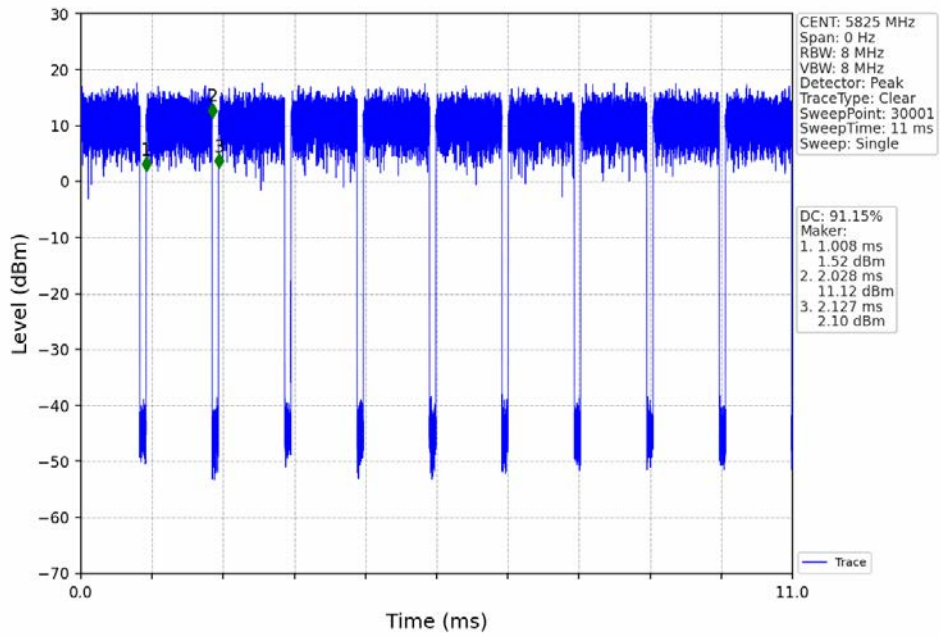
802.11ax(HEW20)_LCH_5745MHz_RU242_Left_Ant1_NTNV



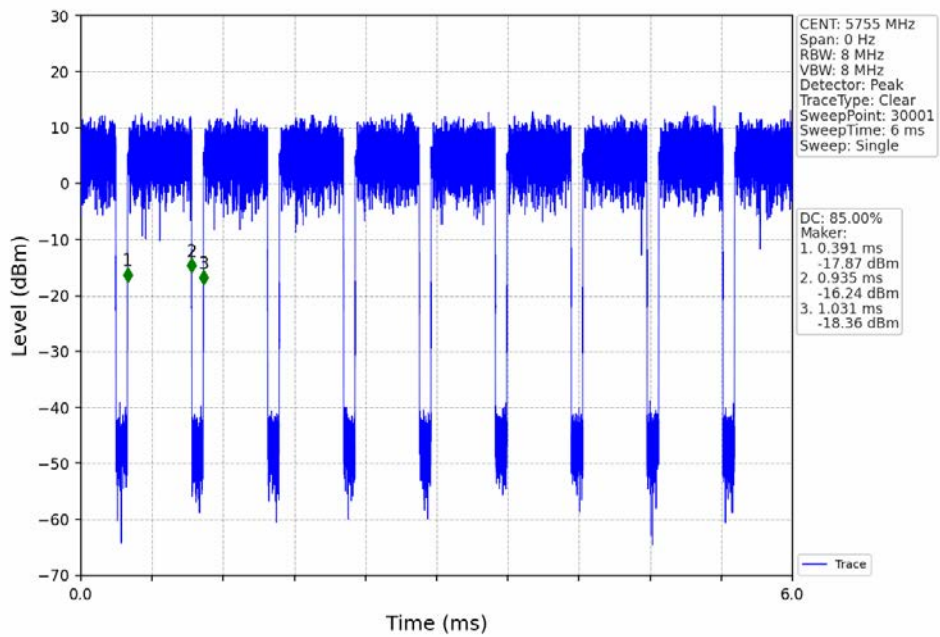
802.11ax(HEW20)_MCH_5785MHz_RU242_Left_Ant1_NTNV



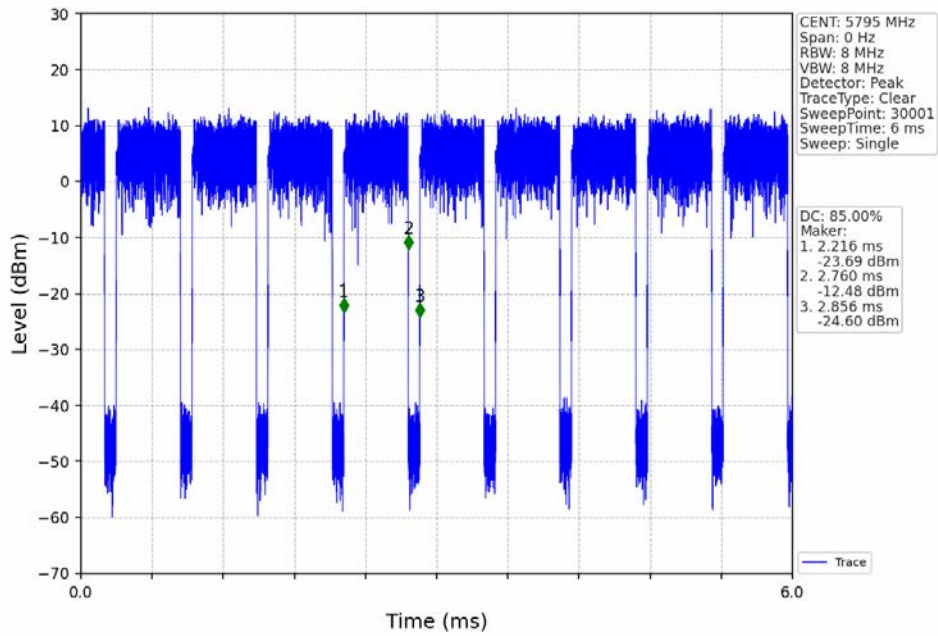
802.11ax(HEW20)_HCH_5825MHz_RU242_Left_Ant1_NTNV



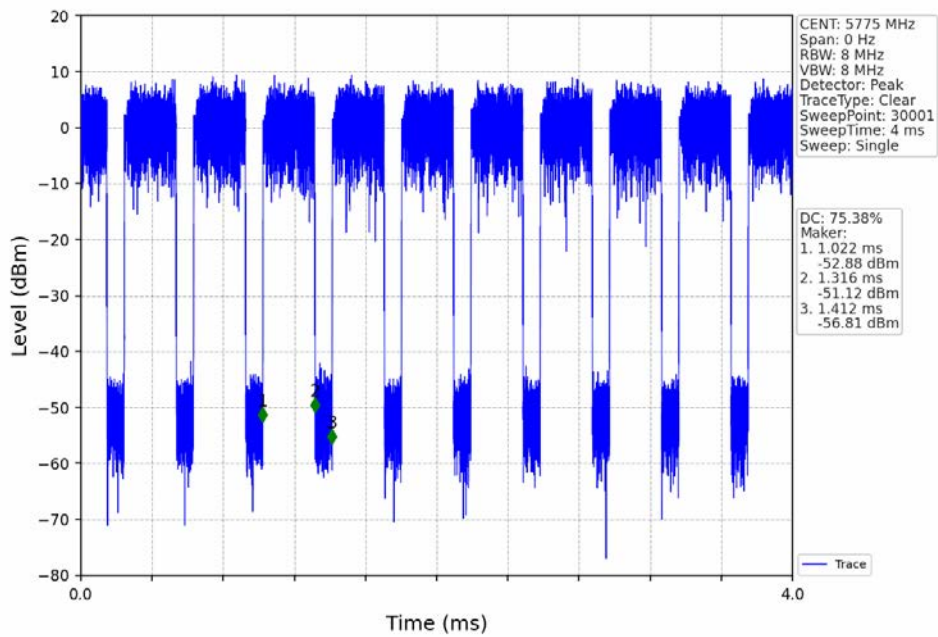
802.11ax(HEW40)_LCH_5755MHz_RU484_Left_Ant1_NTNV



802.11ax(HEW40)_HCH_5795MHz_RU484_Left_Ant1_NTNV



802.11ax(HEW80)_MCH_5775MHz_RU996_Left_Ant1_NTNV



2. Bandwidth

2.1 Test Result

2.1.1 OBW

Mode	TX Type	Frequency (MHz)	RU	RU Pos	ANT	99% Occupied Bandwidth (MHz)		Verdict
						Result	Limit	
802.11a	SISO	5745	/	/	1	17.774	/	Pass
		5785	/	/	1	17.672	/	Pass
		5825	/	/	1	17.743	/	Pass
802.11n (HT20)	MIMO	5745	/	/	1	18.545	/	Pass
		5785	/	/	1	18.679	/	Pass
		5825	/	/	1	18.514	/	Pass
802.11n (HT40)	MIMO	5755	/	/	1	36.441	/	Pass
		5795	/	/	1	36.106	/	Pass
802.11ac (VHT20)	MIMO	5745	/	/	1	18.638	/	Pass
		5785	/	/	1	18.568	/	Pass
		5825	/	/	1	18.648	/	Pass
802.11ac (VHT40)	MIMO	5755	/	/	1	36.301	/	Pass
		5795	/	/	1	36.161	/	Pass
802.11ac (VHT80)	MIMO	5775	/	/	1	75.992	/	Pass
802.11ax (HEW20)	MIMO	5745	RU242	Left	1	19.220	/	Pass
		5785	RU242	Left	1	19.193	/	Pass
		5825	RU242	Left	1	19.182	/	Pass
802.11ax (HEW40)	MIMO	5755	RU484	Left	1	38.110	/	Pass
		5795	RU484	Left	1	37.946	/	Pass
802.11ax (HEW80)	MIMO	5775	RU996	Left	1	78.083	/	Pass

2.1.2 6dB BW

Mode	TX Type	Frequency (MHz)	RU	RU Pos	ANT	6dB Bandwidth (MHz)		Verdict
						Result	Limit	
802.11a	SISO	5745	/	/	1	15.216	>=0.5	Pass
		5785	/	/	1	15.214	>=0.5	Pass
		5825	/	/	1	15.167	>=0.5	Pass
802.11n (HT20)	MIMO	5745	/	/	1	15.220	>=0.5	Pass
		5785	/	/	1	15.220	>=0.5	Pass
		5825	/	/	1	15.221	>=0.5	Pass
802.11n (HT40)	MIMO	5755	/	/	1	35.221	>=0.5	Pass
		5795	/	/	1	35.206	>=0.5	Pass
802.11ac (VHT20)	MIMO	5745	/	/	1	15.225	>=0.5	Pass
		5785	/	/	1	15.217	>=0.5	Pass
		5825	/	/	1	15.224	>=0.5	Pass
802.11ac (VHT40)	MIMO	5755	/	/	1	35.228	>=0.5	Pass
		5795	/	/	1	35.161	>=0.5	Pass
802.11ac (VHT80)	MIMO	5775	/	/	1	75.234	>=0.5	Pass
802.11ax (HEW20)	MIMO	5745	RU242	Left	1	18.801	>=0.5	Pass
		5785	RU242	Left	1	18.701	>=0.5	Pass
		5825	RU242	Left	1	18.420	>=0.5	Pass
802.11ax (HEW40)	MIMO	5755	RU484	Left	1	37.687	>=0.5	Pass
		5795	RU484	Left	1	37.384	>=0.5	Pass
802.11ax	MIMO	5775	RU996	Left	1	77.435	>=0.5	Pass

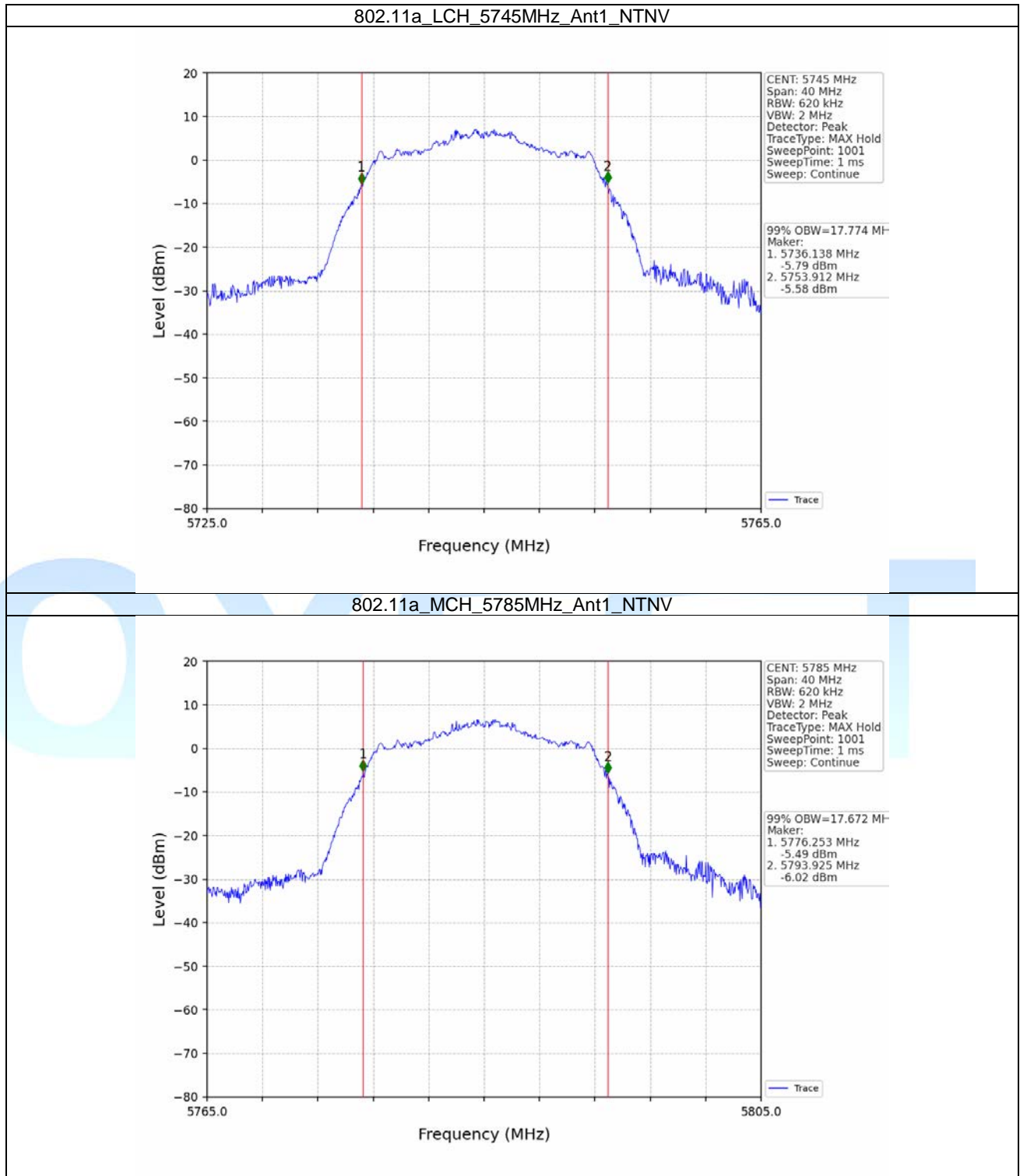


(HEW80)								
---------	--	--	--	--	--	--	--	--

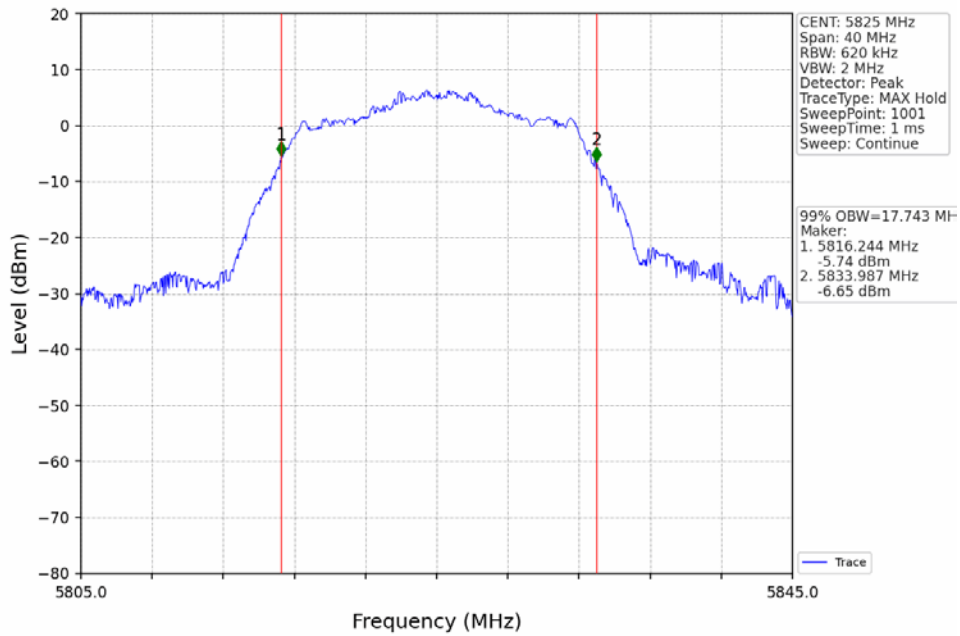


2.2 Test Graph

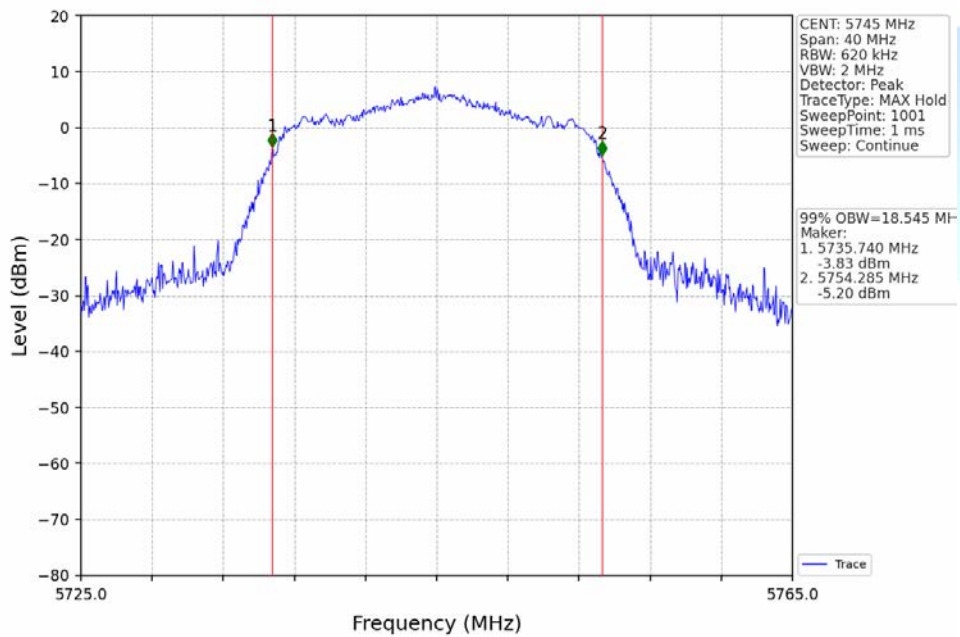
2.2.1 OBW



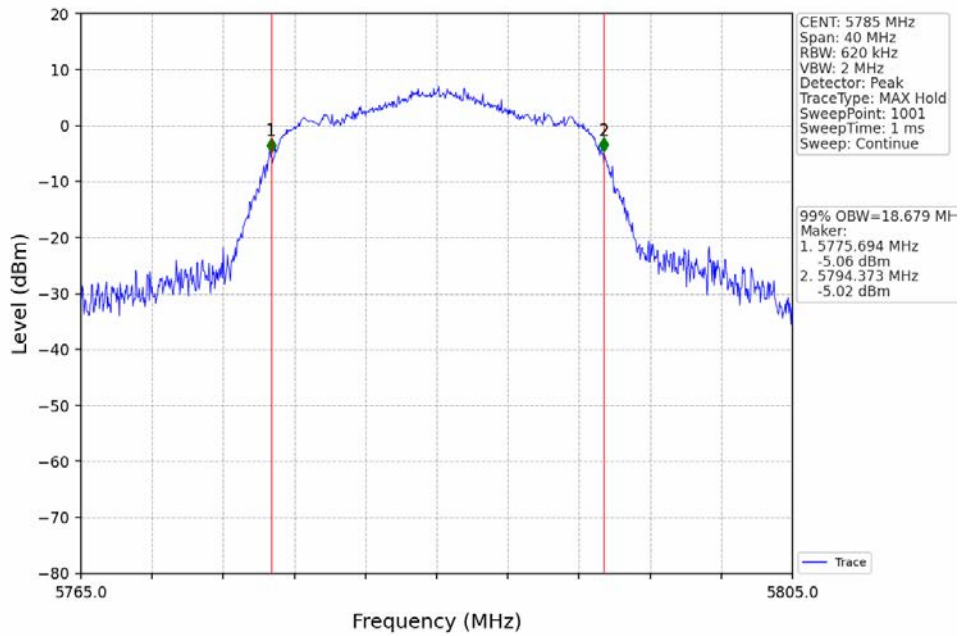
802.11a_HCH_5825MHz_Ant1_NTNV



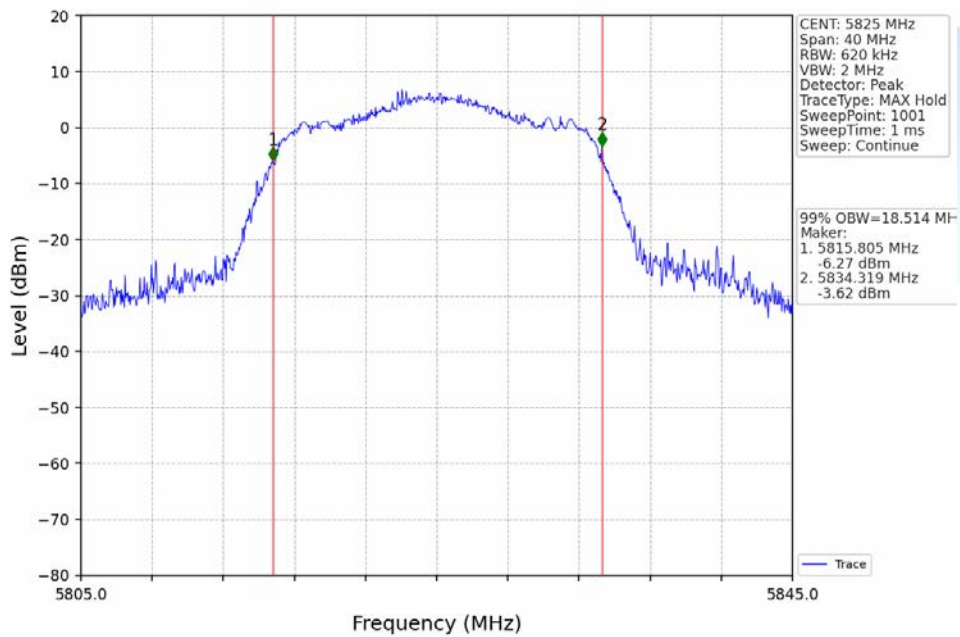
802.11n(HT20)_LCH_5745MHz_Ant1_NTNV



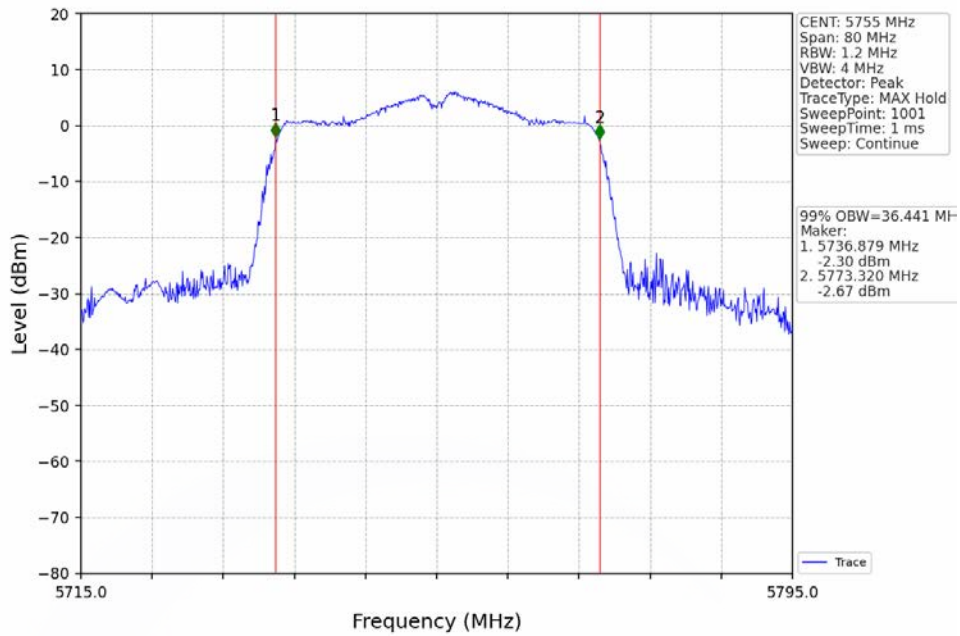
802.11n(HT20)_MCH_5785MHz_Ant1_NTNV



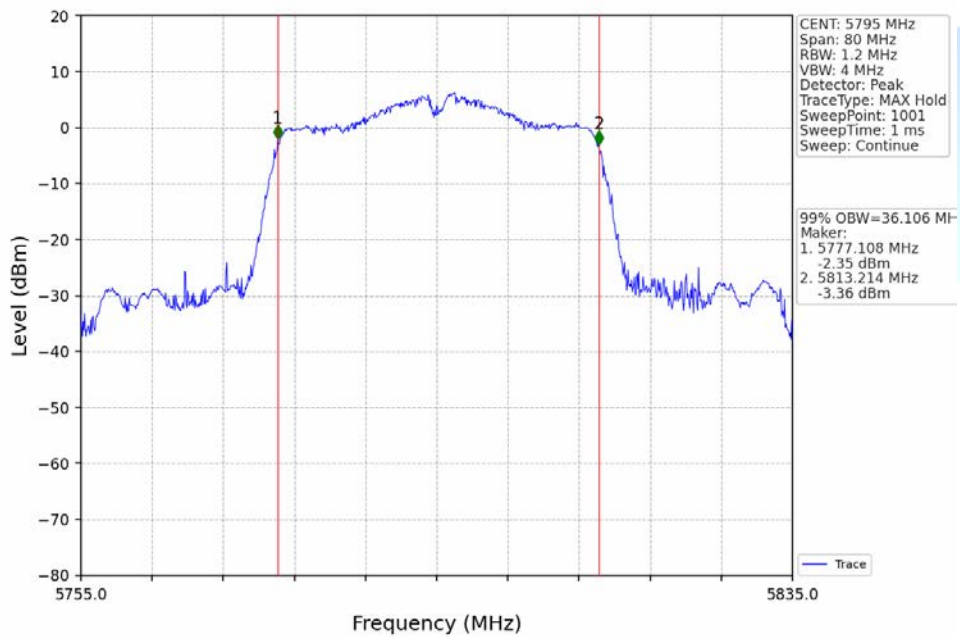
802.11n(HT20)_HCH_5825MHz_Ant1_NTNV



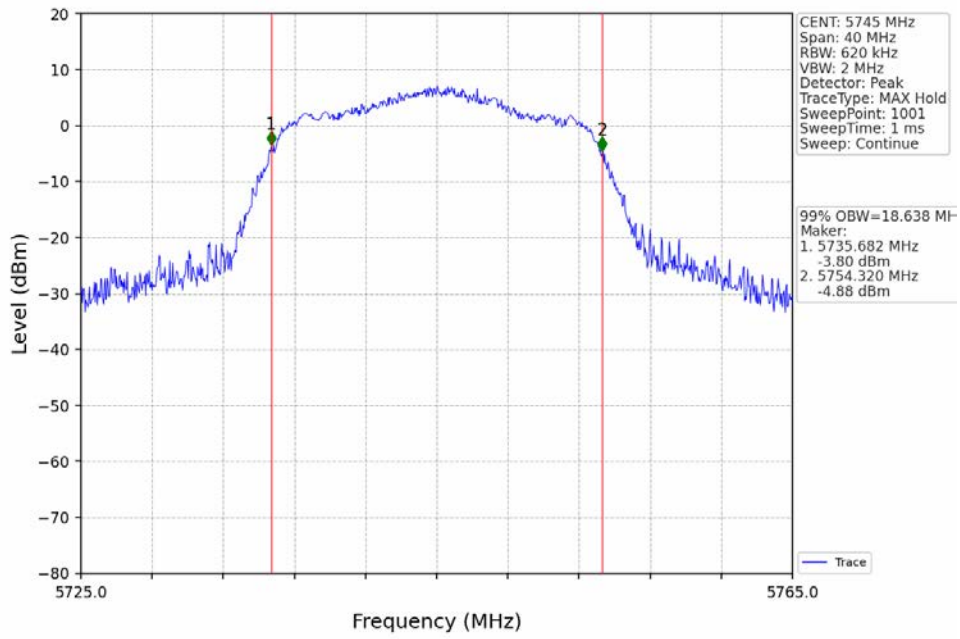
802.11n(HT40)_LCH_5755MHz_Ant1_NTNV



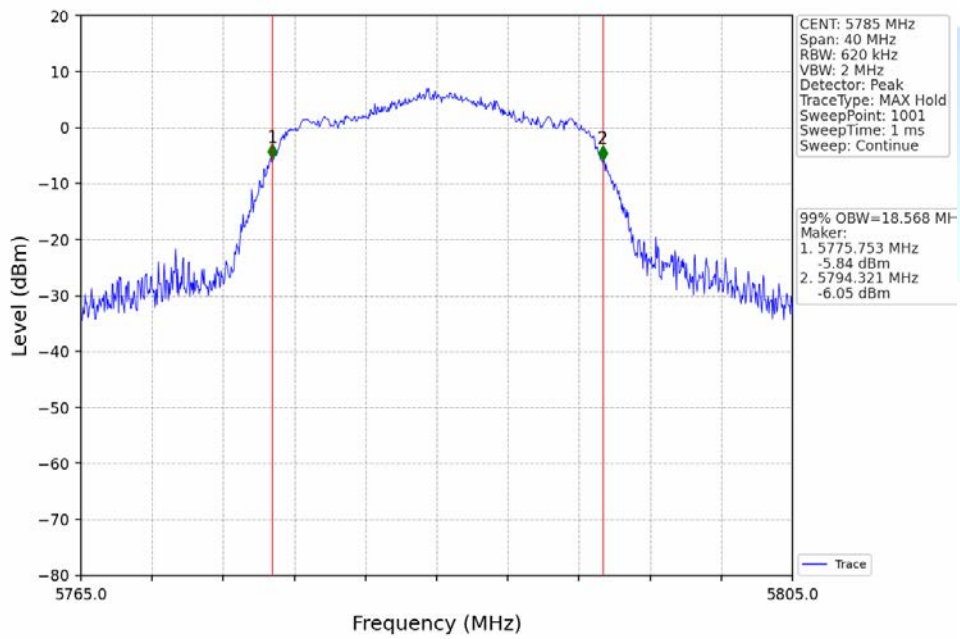
802.11n(HT40)_HCH_5795MHz_Ant1_NTNV



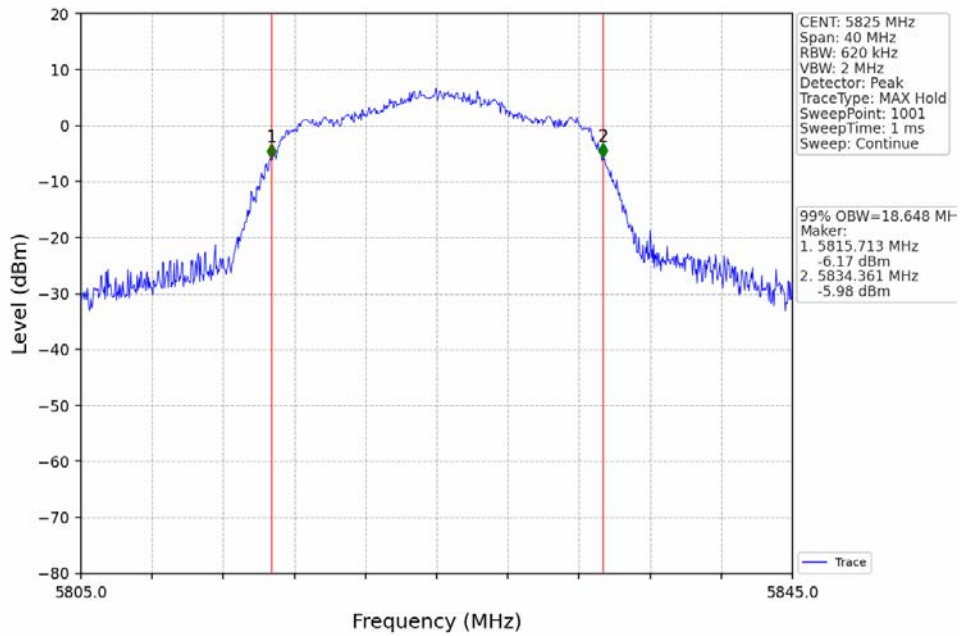
802.11ac(VHT20)_LCH_5745MHz_Ant1_NTNV



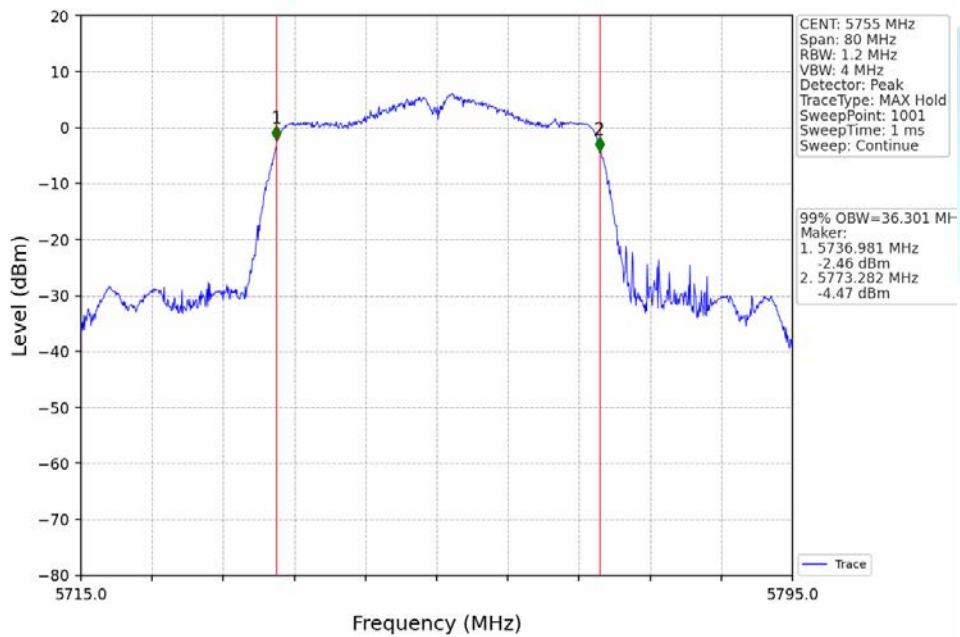
802.11ac(VHT20)_MCH_5785MHz_Ant1_NTNV



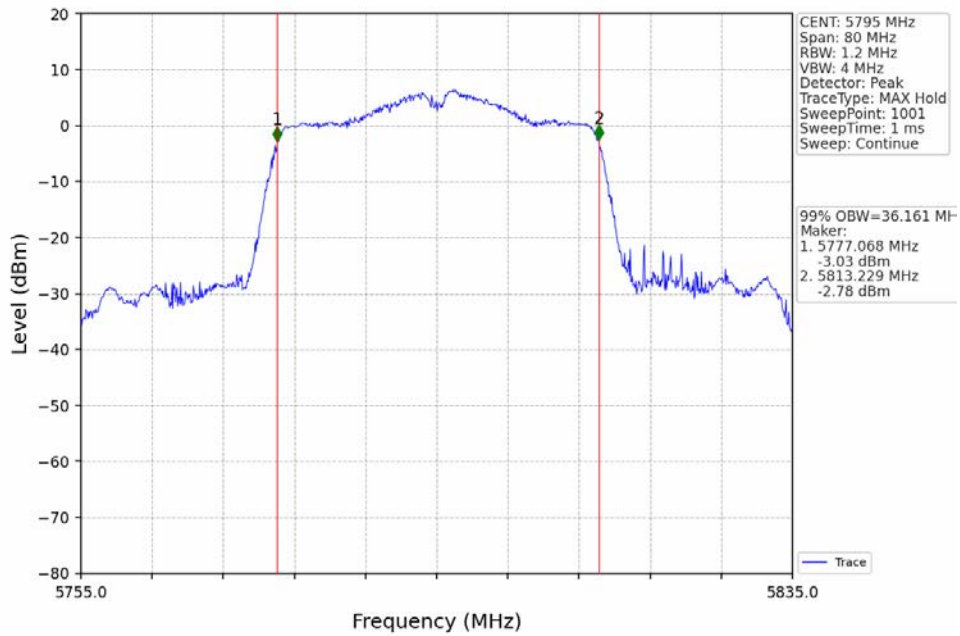
802.11ac(VHT20)_HCH_5825MHz_Ant1_NTNV



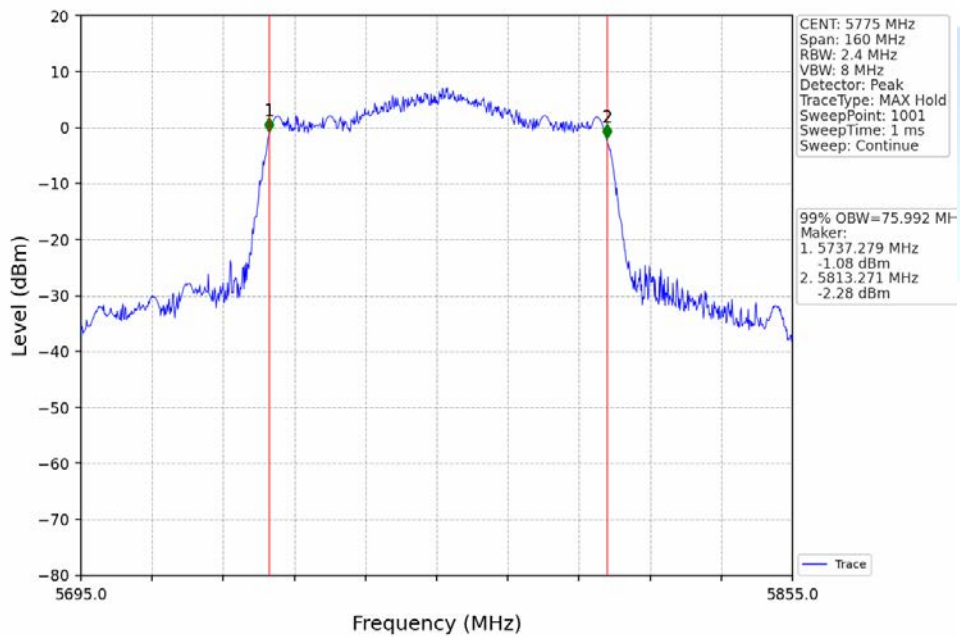
802.11ac(VHT40)_LCH_5755MHz_Ant1_NTNV



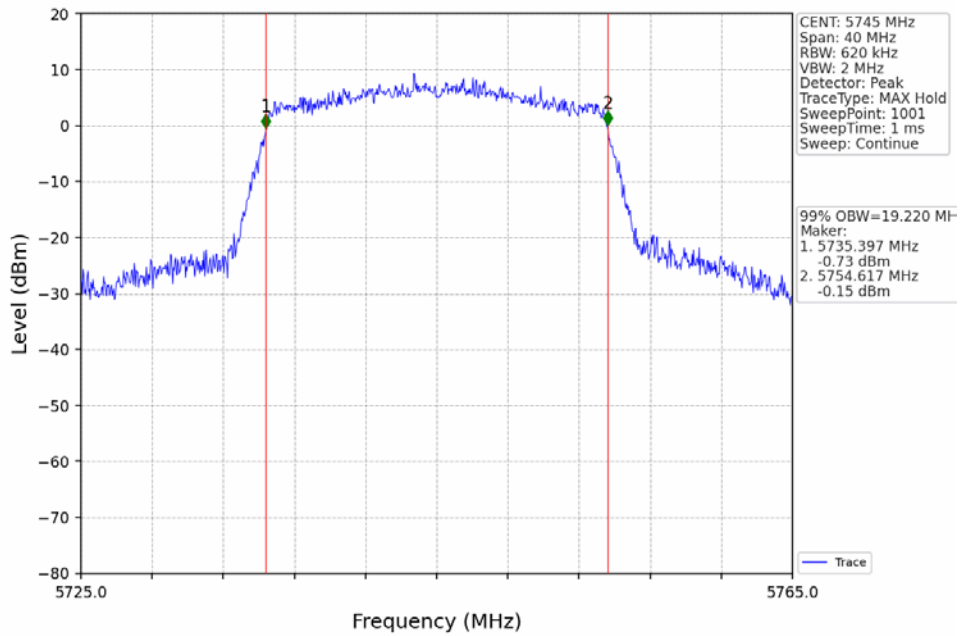
802.11ac(VHT40)_HCH_5795MHz_Ant1_NTNV



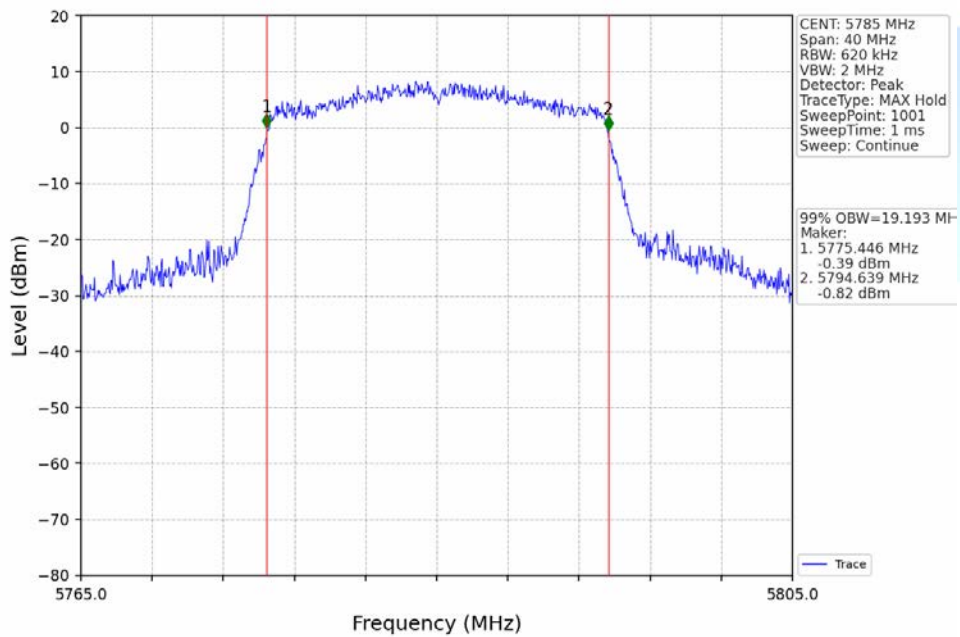
802.11ac(VHT80)_MCH_5775MHz_Ant1_NTNV



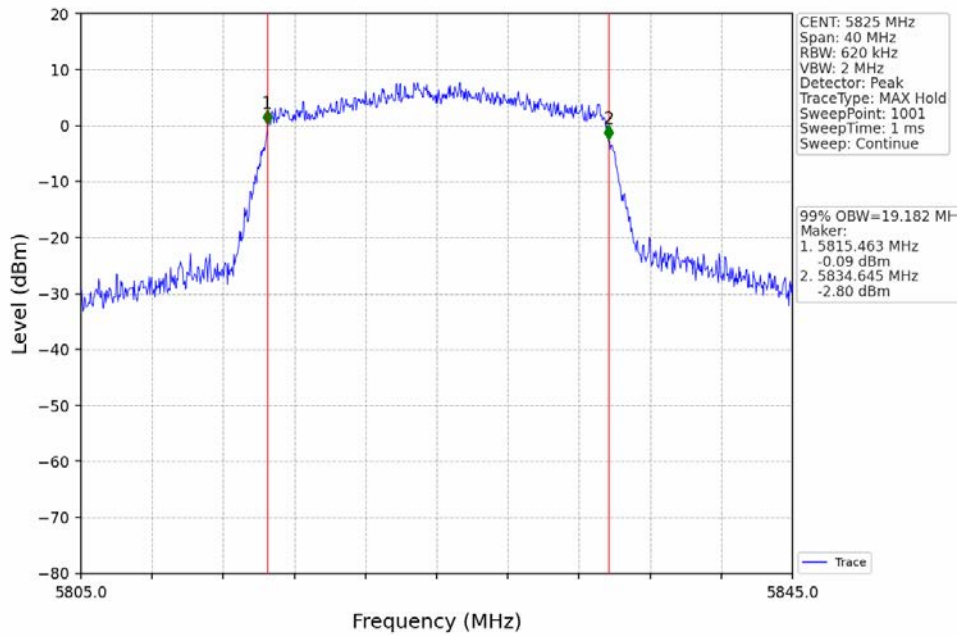
802.11ax(HEW20)_LCH_5745MHz_RU242_Left_Ant1_NTNV



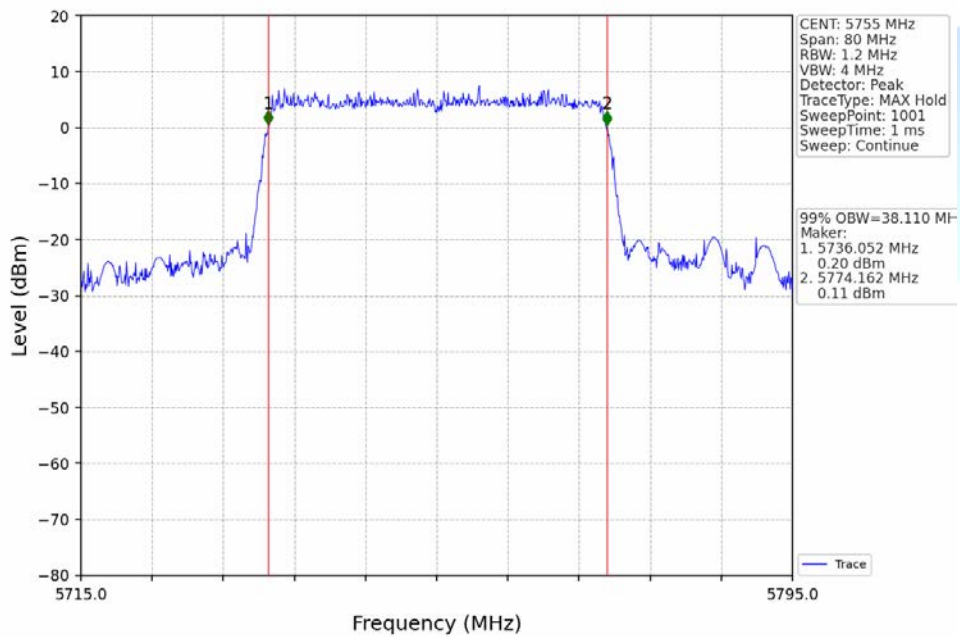
802.11ax(HEW20)_MCH_5785MHz_RU242_Left_Ant1_NTNV



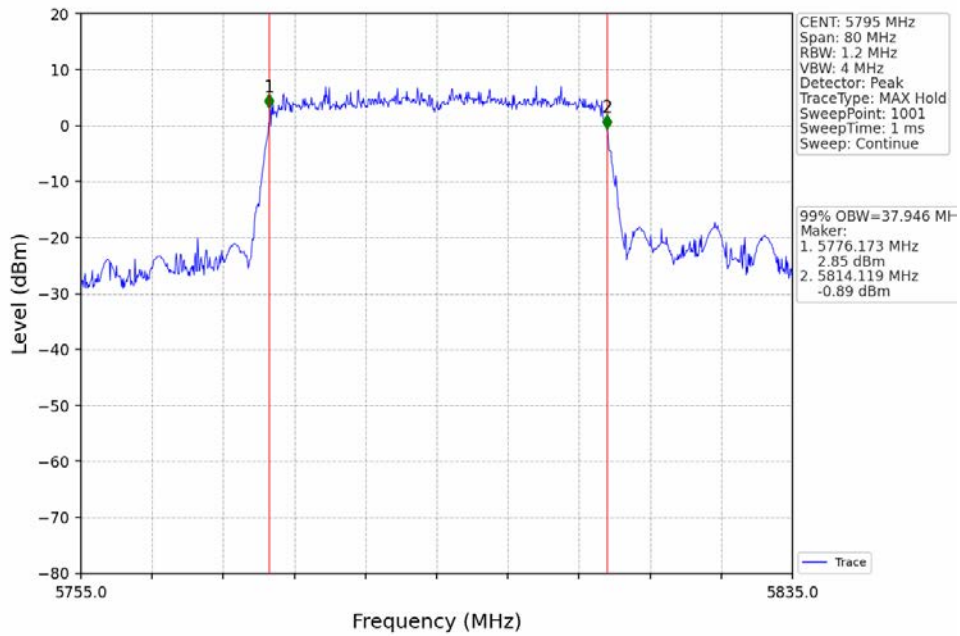
802.11ax(HEW20)_HCH_5825MHz_RU242_Left_Ant1_NTNV



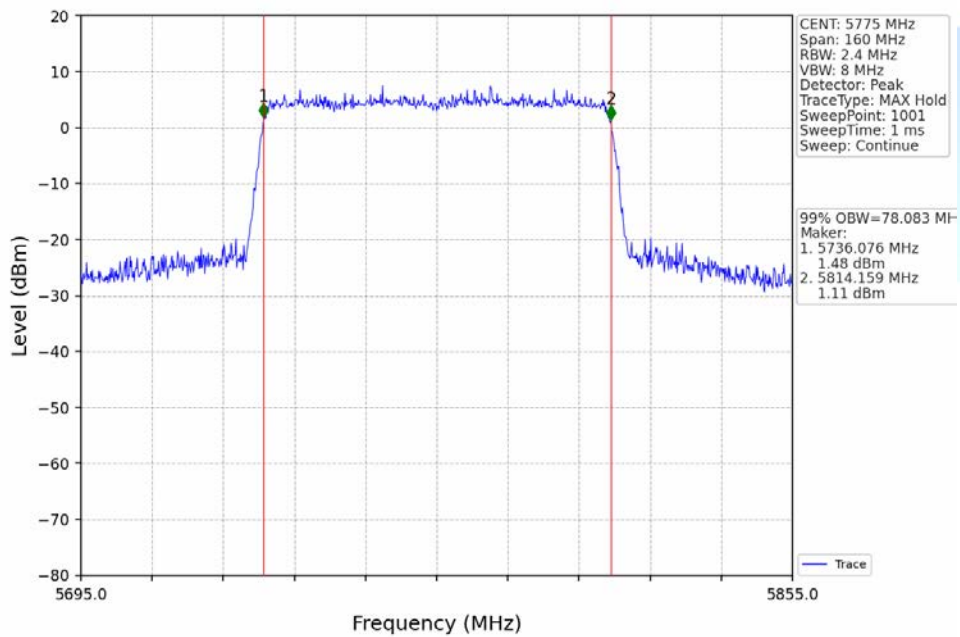
802.11ax(HEW40)_LCH_5755MHz_RU484_Left_Ant1_NTNV



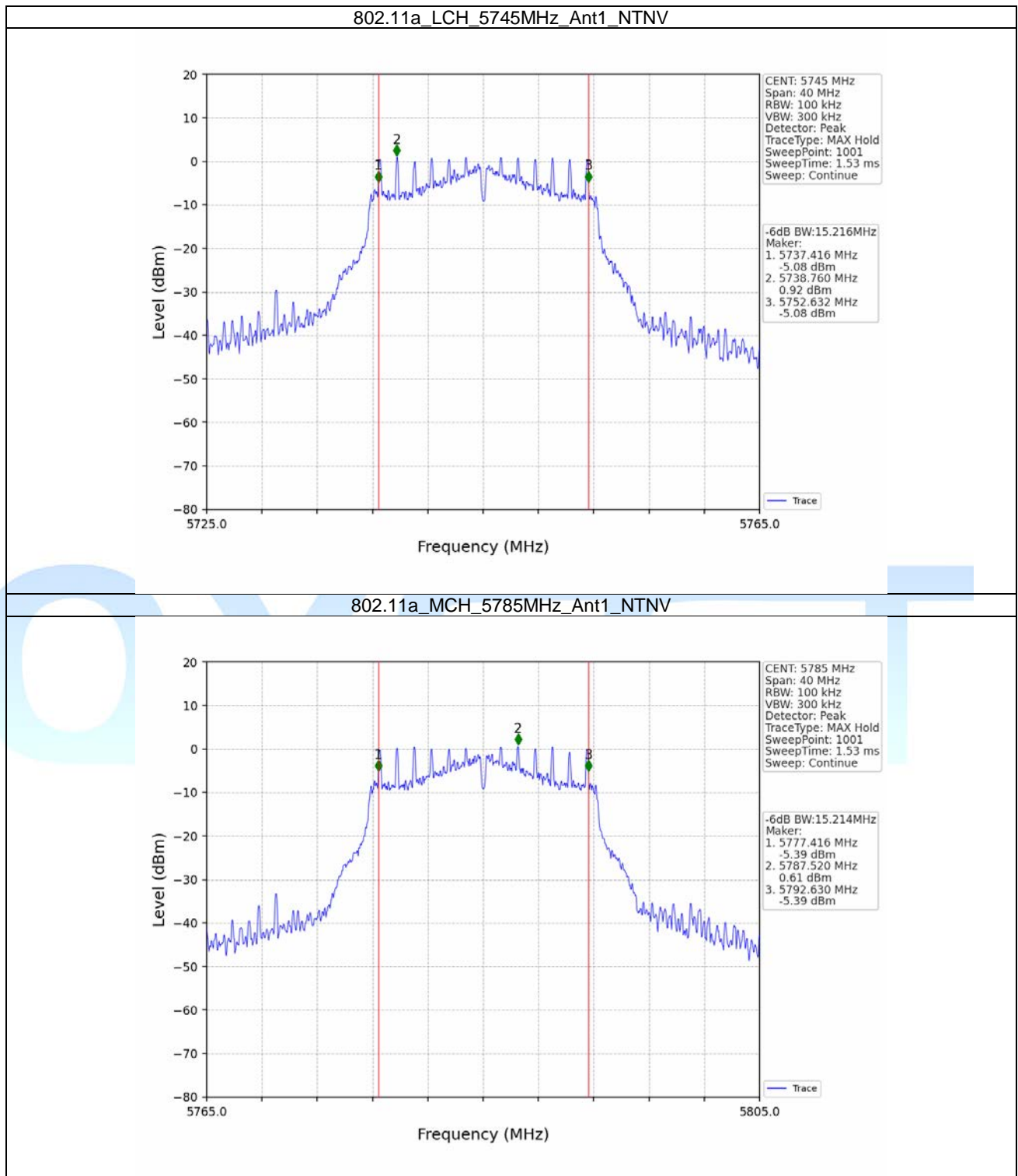
802.11ax(HEW40)_HCH_5795MHz_RU484_Left_Ant1_NTNV



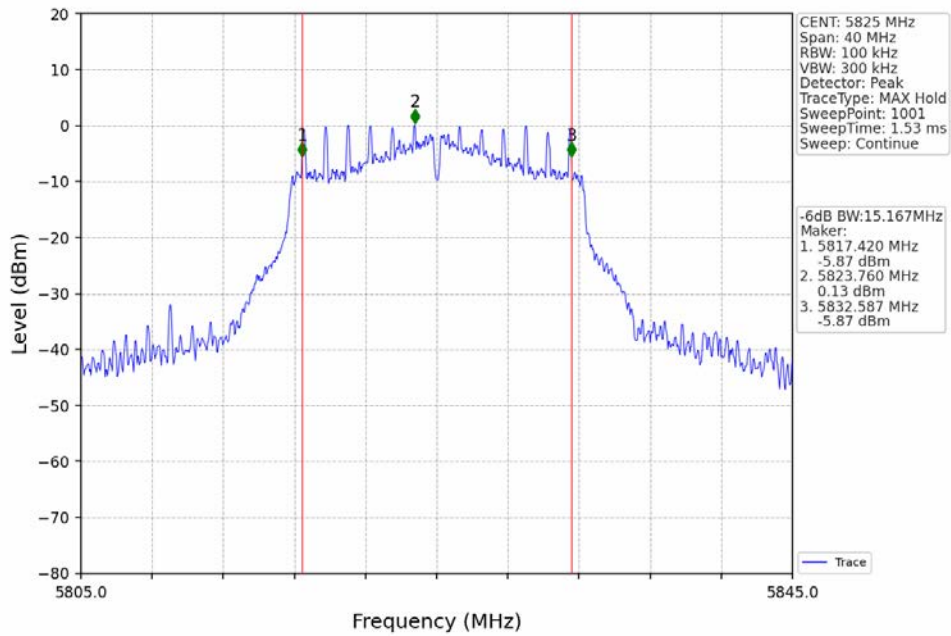
802.11ax(HEW80)_MCH_5775MHz_RU996_Left_Ant1_NTNV



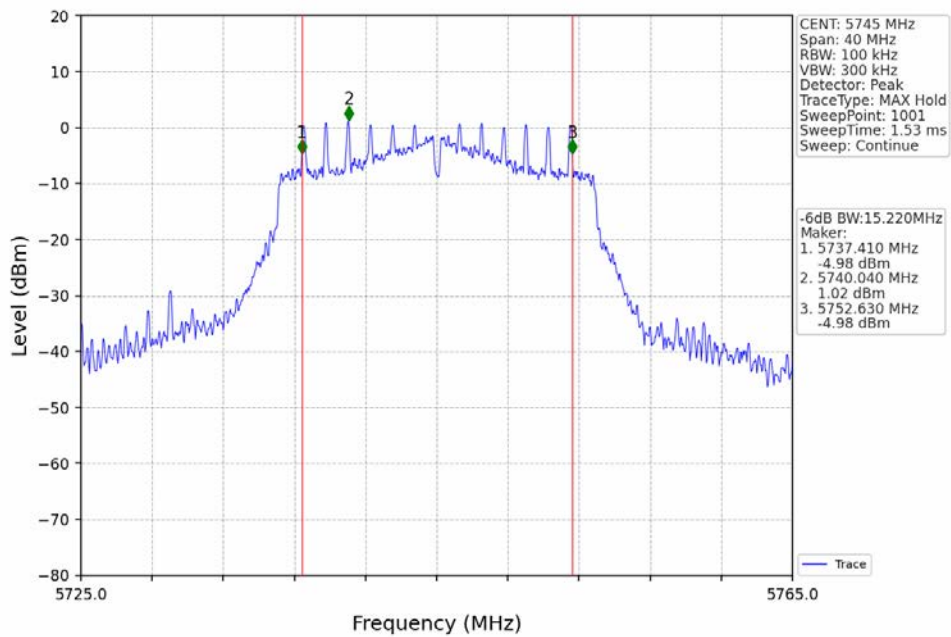
2.2.2 6dB BW



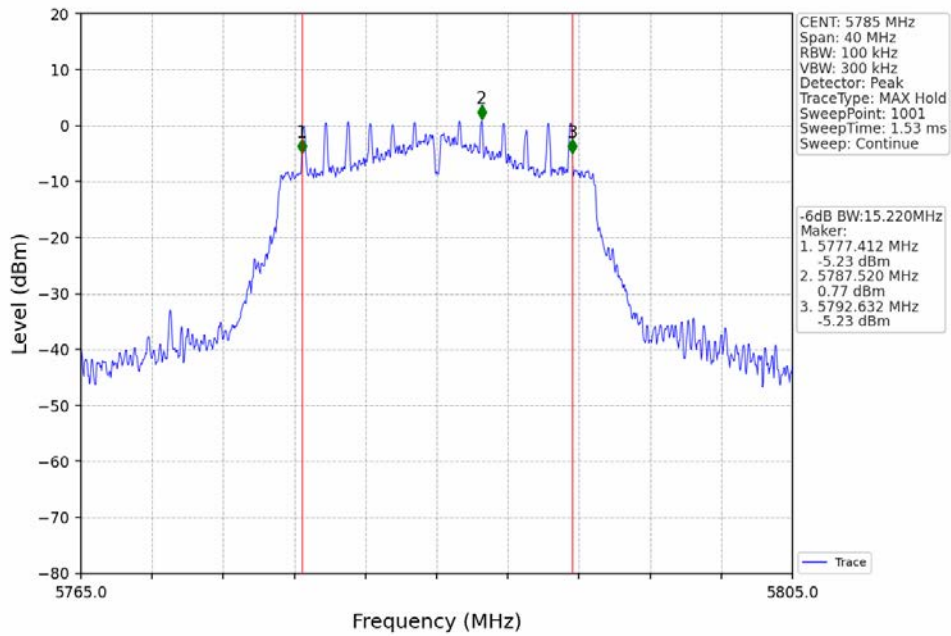
802.11a_HCH_5825MHz_Ant1_NTNV



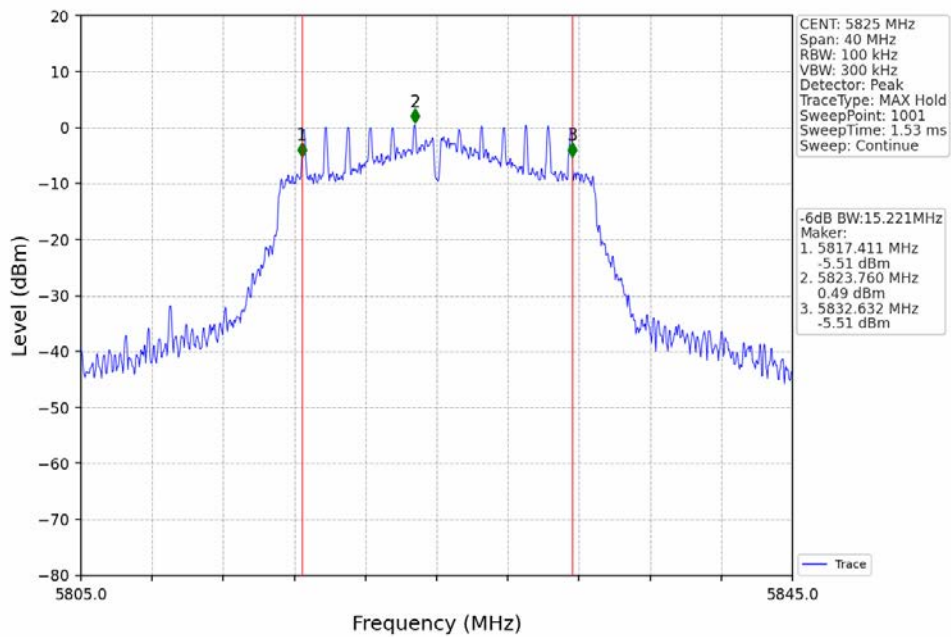
802.11n(HT20)_LCH_5745MHz_Ant1_NTNV



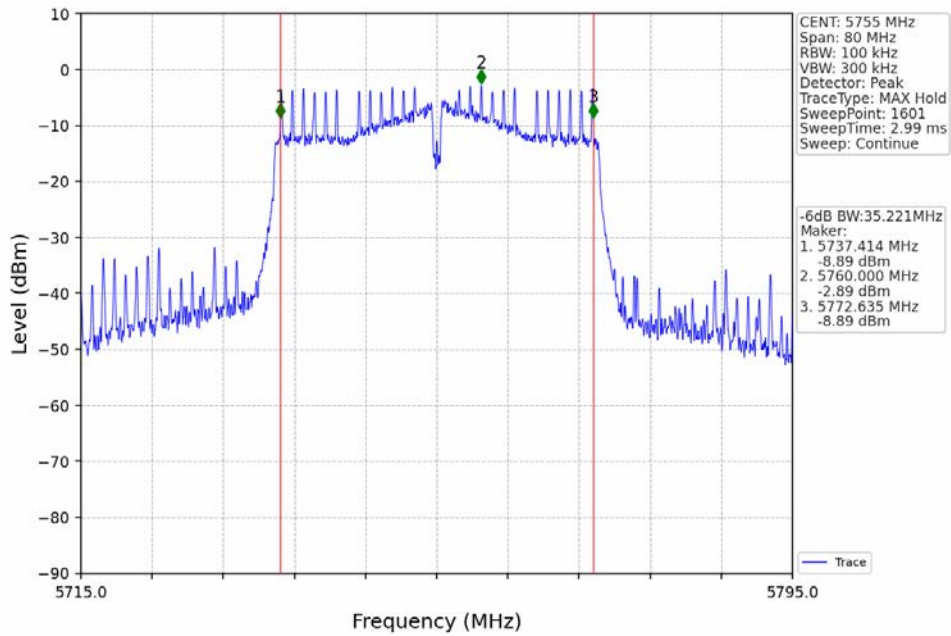
802.11n(HT20)_MCH_5785MHz_Ant1_NTNV



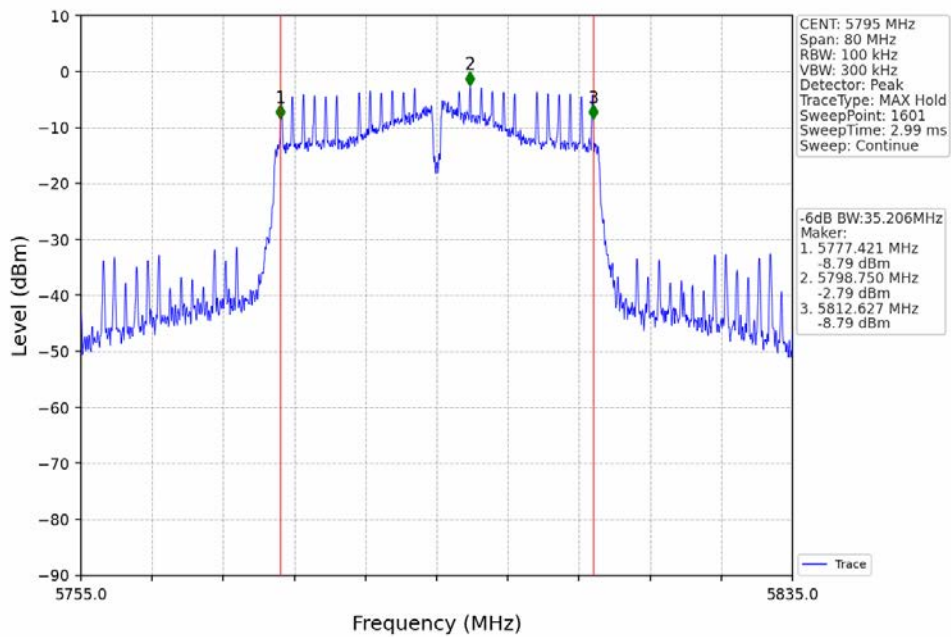
802.11n(HT20)_HCH_5825MHz_Ant1_NTNV



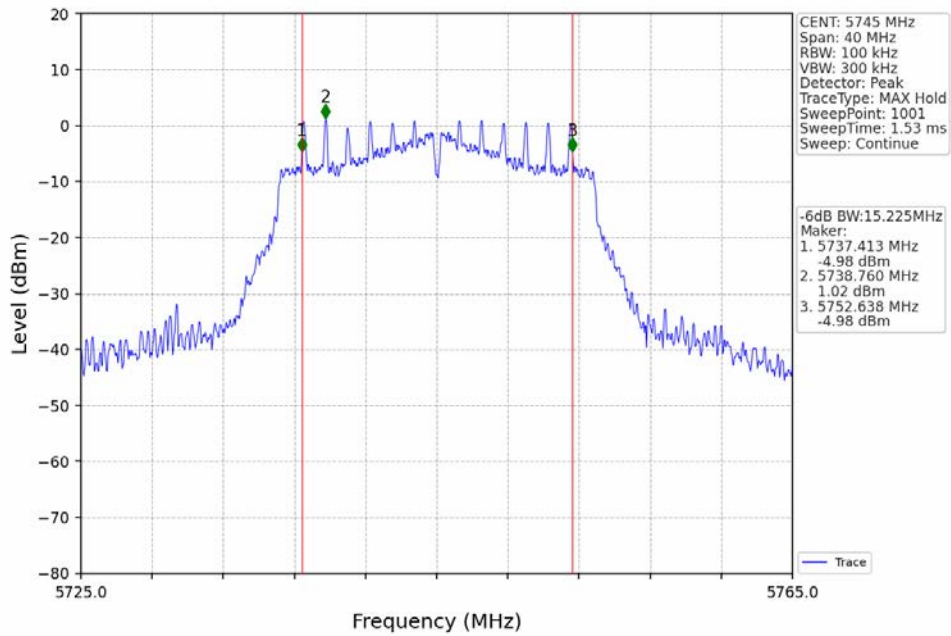
802.11n(HT40)_LCH_5755MHz_Ant1_NTNV



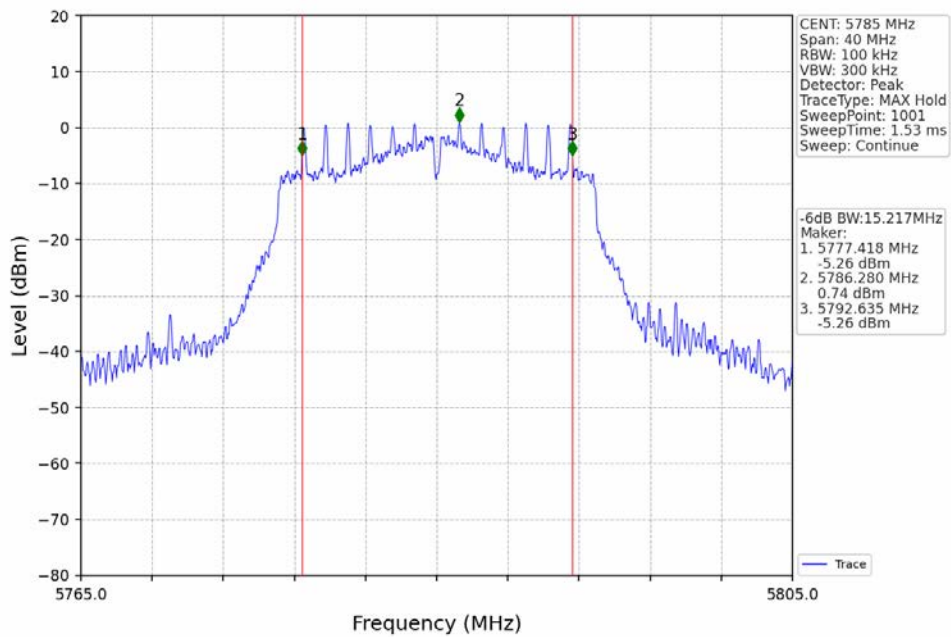
802.11n(HT40)_HCH_5795MHz_Ant1_NTNV



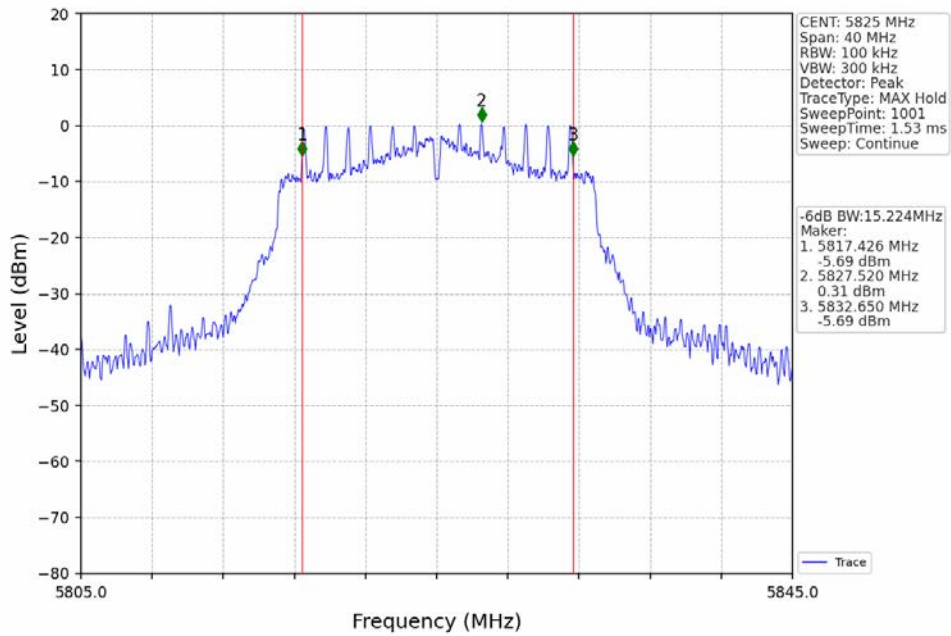
802.11ac(VHT20)_LCH_5745MHz_Ant1_NTNV



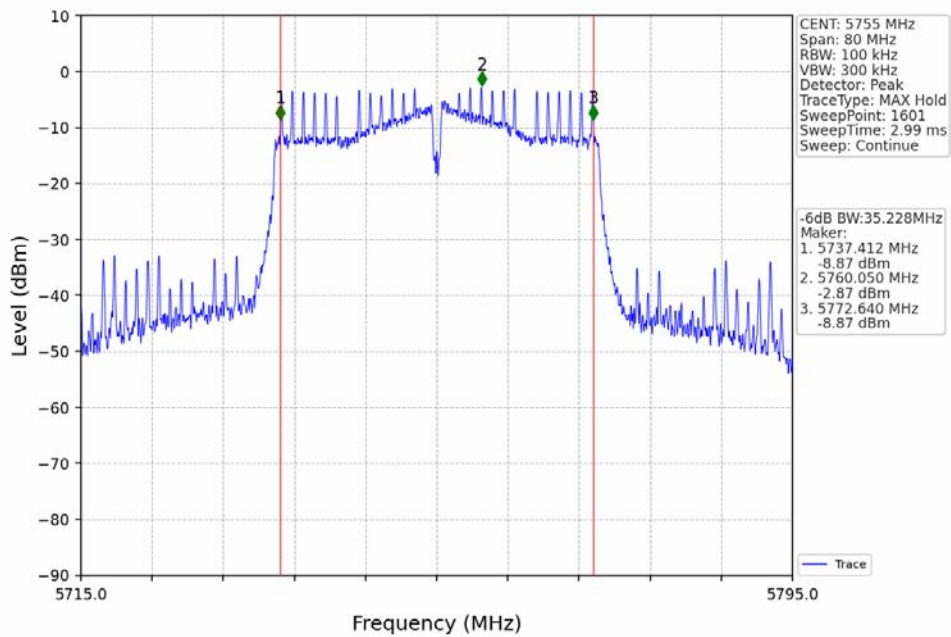
802.11ac(VHT20)_MCH_5785MHz_Ant1_NTNV



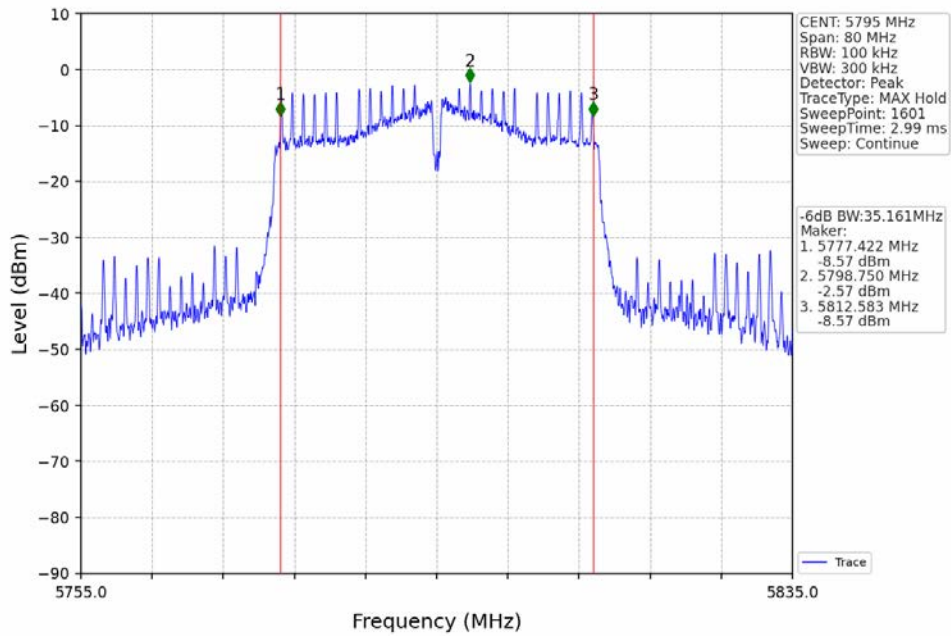
802.11ac(VHT20)_HCH_5825MHz_Ant1_NTNV



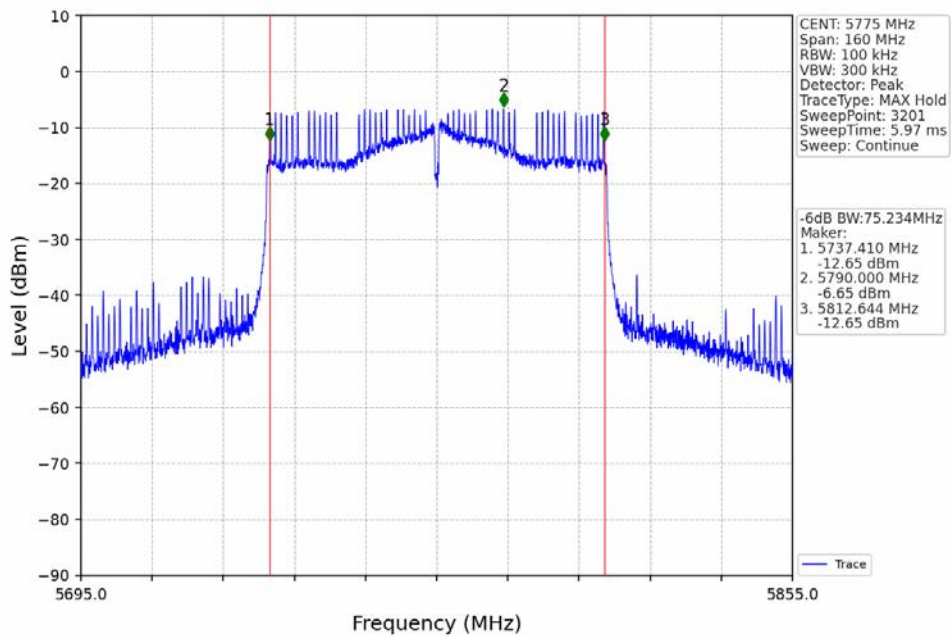
802.11ac(VHT40)_LCH_5755MHz_Ant1_NTNV



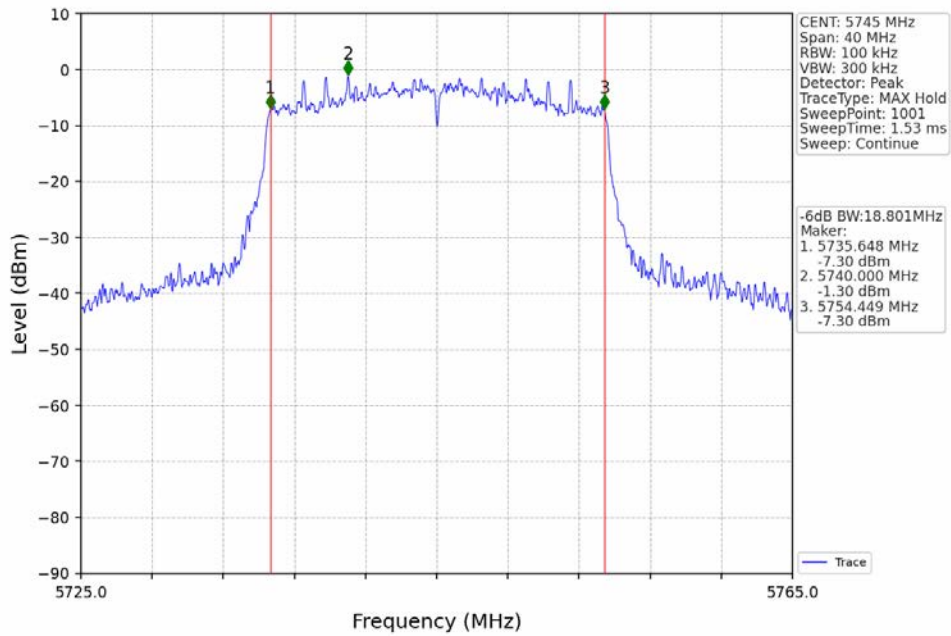
802.11ac(VHT40)_HCH_5795MHz_Ant1_NTNV



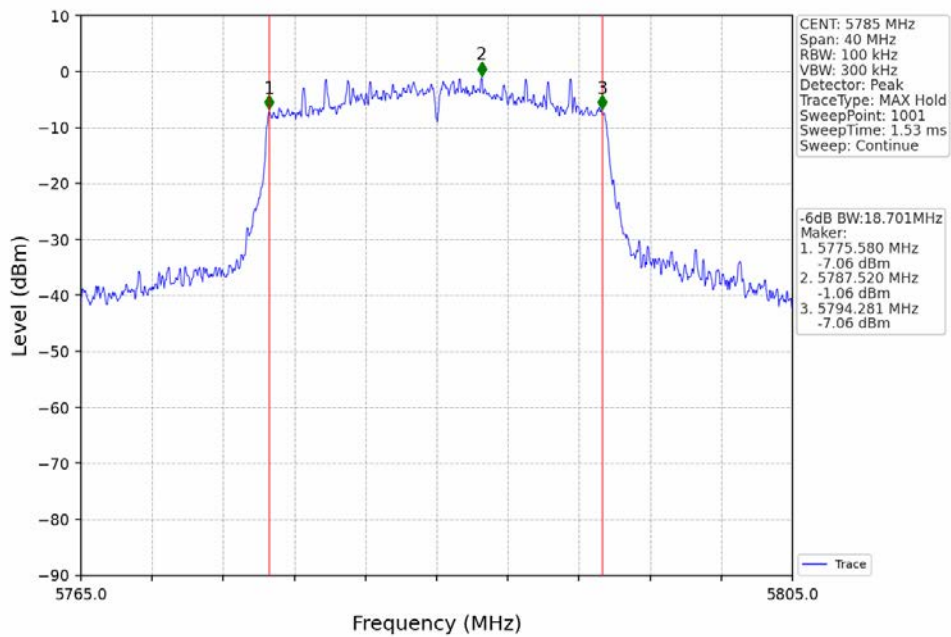
802.11ac(VHT80)_MCH_5775MHz_Ant1_NTNV



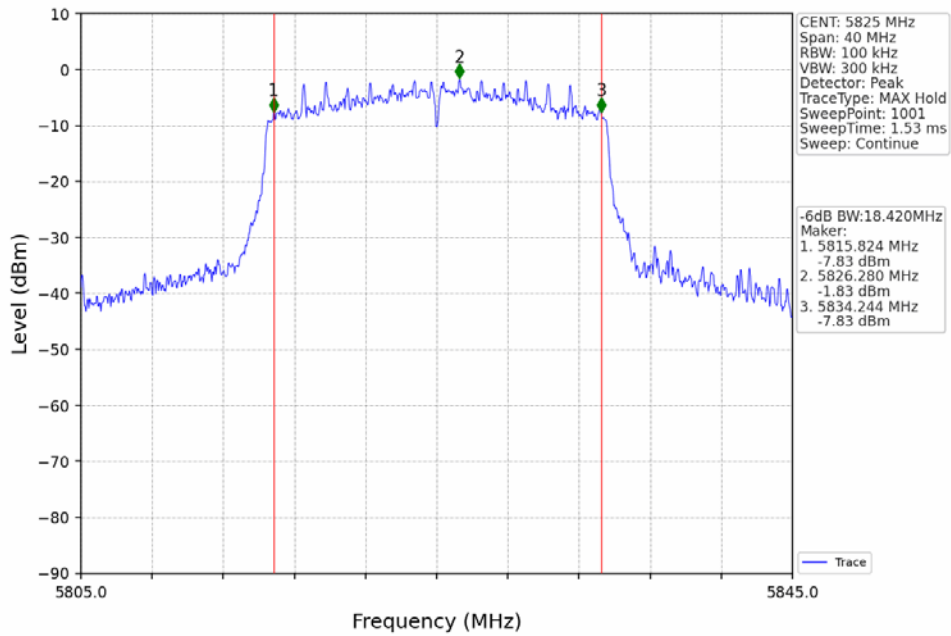
802.11ax(HEW20)_LCH_5745MHz_RU242_Left_Ant1_NTNV



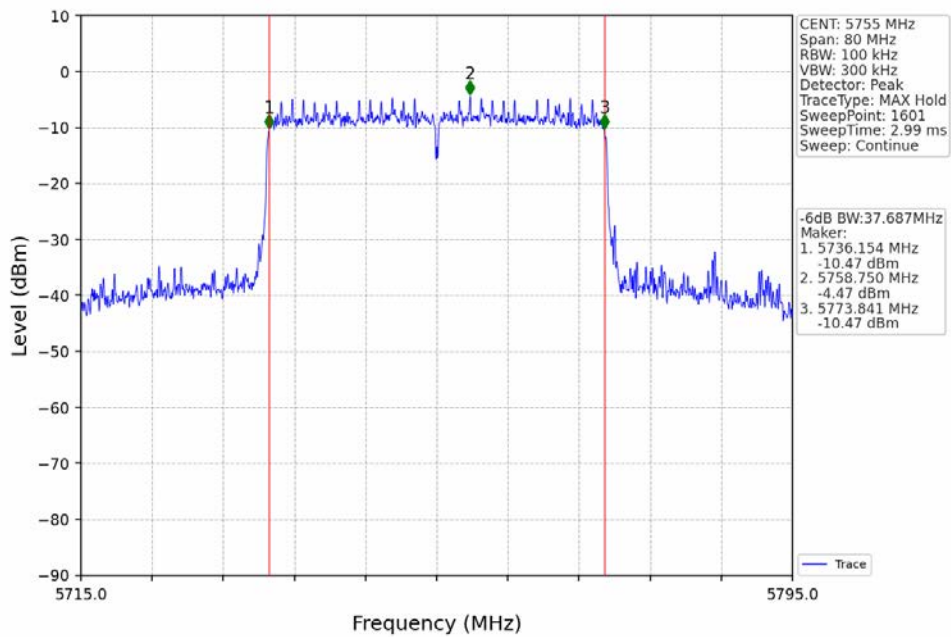
802.11ax(HEW20)_MCH_5785MHz_RU242_Left_Ant1_NTNV



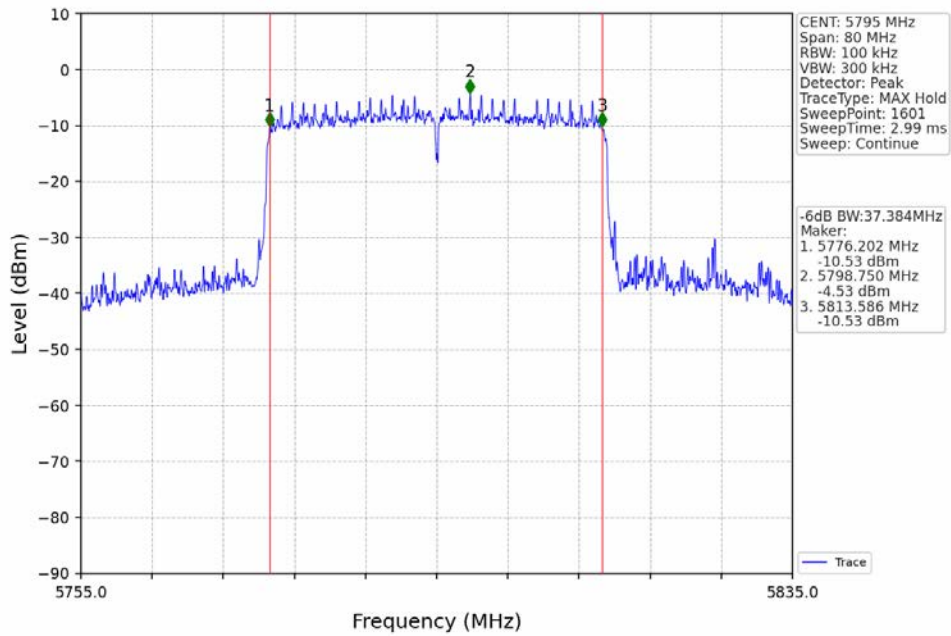
802.11ax(HEW20)_HCH_5825MHz_RU242_Left_Ant1_NTNV



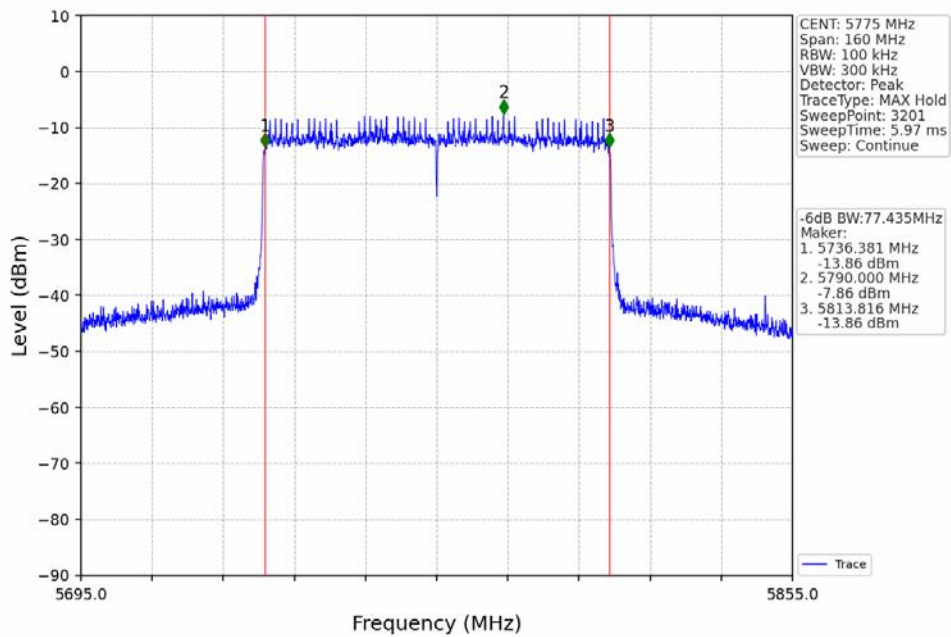
802.11ax(HEW40)_LCH_5755MHz_RU484_Left_Ant1_NTNV



802.11ax(HEW40)_HCH_5795MHz_RU484_Left_Ant1_NTNV



802.11ax(HEW80)_MCH_5775MHz_RU996_Left_Ant1_NTNV



3. Maximum Conducted Output Power

3.1 Test Result

3.1.1 Power

Mode	TX Type	Frequency (MHz)	RU	RU Pos	Maximum Average Conducted Output Power (dBm)				Verdict
					ANT1	ANT2	MIMO	Limit	
802.11a	SISO	5745	/	/	10.27	9.05	/	<=30	Pass
		5785	/	/	9.91	9.18	/	<=30	Pass
		5825	/	/	9.59	8.26	/	<=30	Pass
802.11n (HT20)	MIMO	5745	/	/	10.02	5.85	11.43	<=30	Pass
		5785	/	/	9.91	7.01	11.71	<=30	Pass
		5825	/	/	9.62	8.04	11.91	<=30	Pass
802.11n (HT40)	MIMO	5755	/	/	8.59	4.59	10.05	<=30	Pass
		5795	/	/	8.46	6.22	10.49	<=30	Pass
802.11ac (VHT20)	MIMO	5745	/	/	10.18	5.95	11.57	<=30	Pass
		5785	/	/	9.99	7.03	11.77	<=30	Pass
		5825	/	/	9.50	8.26	11.93	<=30	Pass
802.11ac (VHT40)	MIMO	5755	/	/	8.60	4.58	10.05	<=30	Pass
		5795	/	/	8.44	6.02	10.41	<=30	Pass
802.11ac (VHT80)	MIMO	5775	/	/	8.12	4.98	9.84	<=30	Pass
802.11ax (HEW20)	MIMO	5745	RU242	Left	10.33	6.15	11.73	<=30	Pass
		5785	RU242	Left	10.19	7.15	11.94	<=30	Pass
		5825	RU242	Left	9.78	8.50	12.20	<=30	Pass
802.11ax (HEW40)	MIMO	5755	RU484	Left	9.99	5.83	11.40	<=30	Pass
		5795	RU484	Left	9.57	7.25	11.57	<=30	Pass
802.11ax (HEW80)	MIMO	5775	RU996	Left	9.33	6.17	11.04	<=30	Pass
Note1: Antenna Gain: Ant1: 2.71dBi; Ant2: 2.71dBi; Note2: Directional Gain: 5.72dBi									

4. Maximum Power Spectral Density

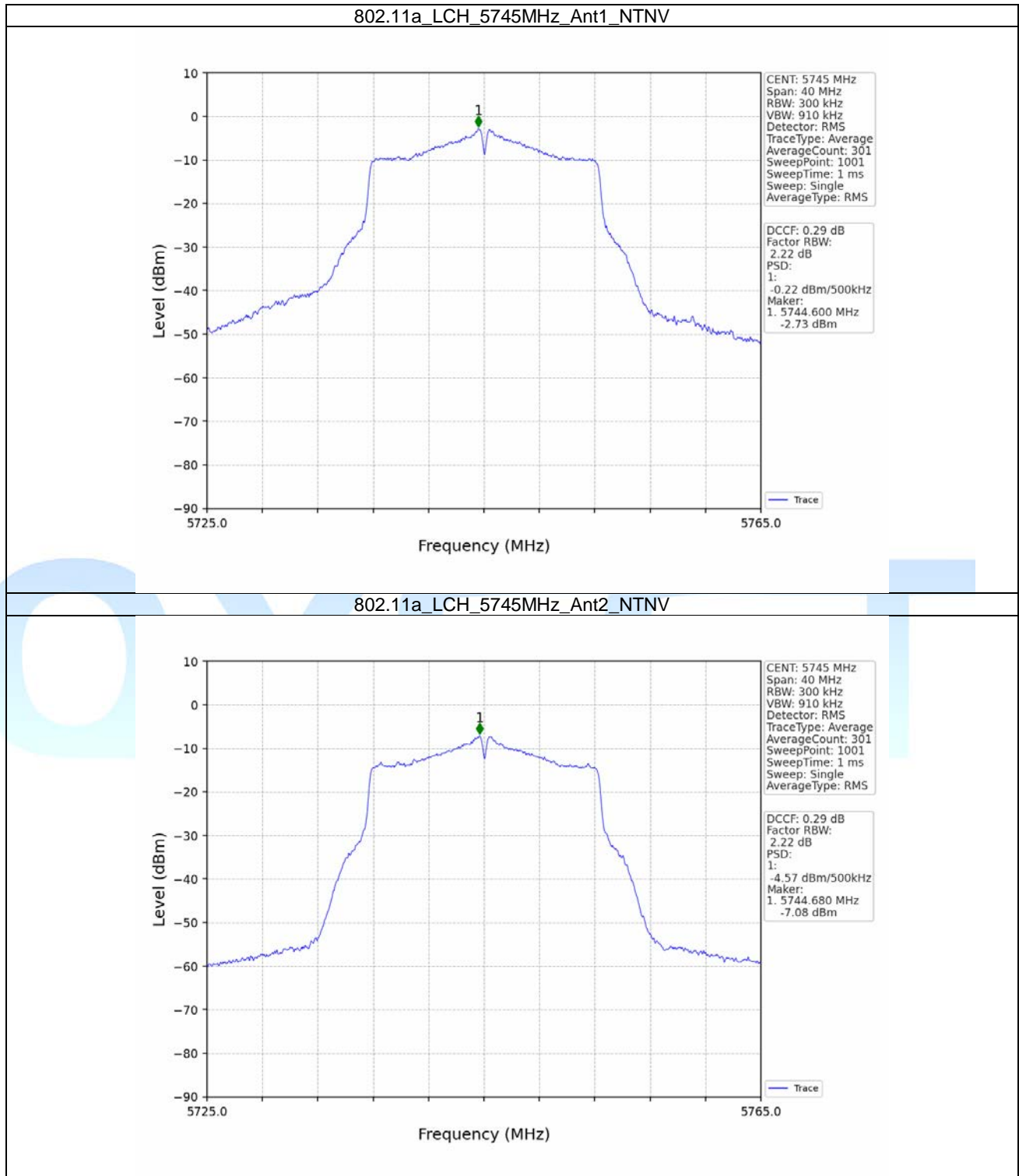
4.1 Test Result

4.1.1 PSD-Band3

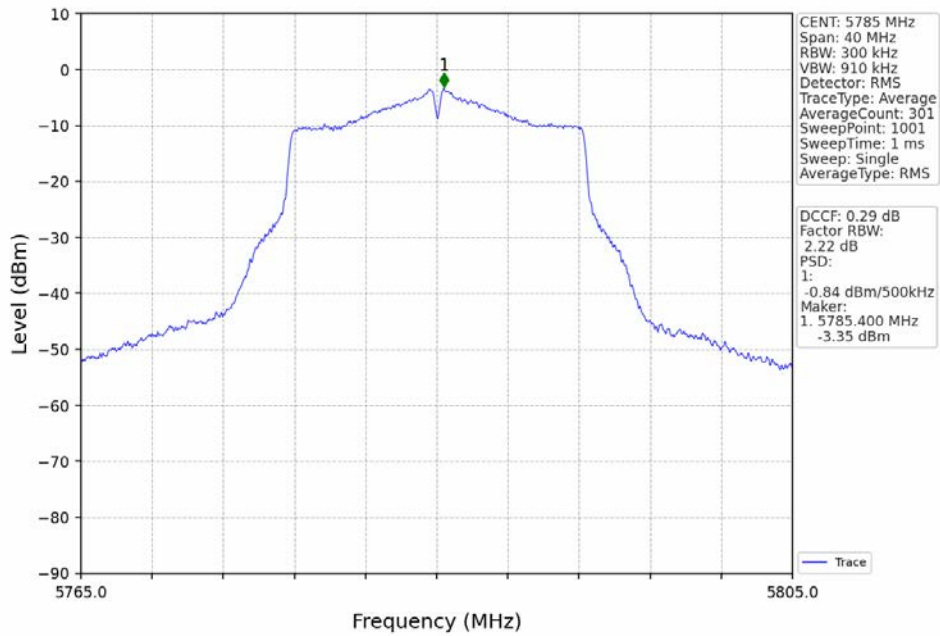
Mode	TX Type	Frequency (MHz)	RU	RU Pos	Maximum PSD (dBm/500kHz)				Verdict
					ANT1	ANT2	MIMO	Limit	
802.11a	SISO	5745	/	/	-0.22	-4.57	/	<=30	Pass
		5785	/	/	-0.84	-3.46	/	<=30	Pass
		5825	/	/	-1.29	-2.30	/	<=30	Pass
802.11n (HT20)	MIMO	5745	/	/	-1.14	-4.88	0.34	<=30	Pass
		5785	/	/	-0.97	-3.91	0.76	<=30	Pass
		5825	/	/	-1.33	-2.83	0.89	<=30	Pass
802.11n (HT40)	MIMO	5755	/	/	-5.24	-9.61	-3.96	<=30	Pass
		5795	/	/	-5.14	-7.70	-3.26	<=30	Pass
802.11ac (VHT20)	MIMO	5745	/	/	-0.81	-4.94	0.53	<=30	Pass
		5785	/	/	-1.02	-3.76	0.76	<=30	Pass
		5825	/	/	-1.46	-2.63	0.99	<=30	Pass
802.11ac (VHT40)	MIMO	5755	/	/	-5.34	-9.76	-4.00	<=30	Pass
		5795	/	/	-5.29	-7.67	-3.36	<=30	Pass
802.11ac (VHT80)	MIMO	5775	/	/	-9.11	-12.32	-7.49	<=30	Pass
802.11ax (HEW20)	MIMO	5745	RU242	Left	-2.62	-6.68	-1.31	<=30	Pass
		5785	RU242	Left	-3.05	-5.91	-1.42	<=30	Pass
		5825	RU242	Left	-3.30	-4.60	-0.99	<=30	Pass
802.11ax (HEW40)	MIMO	5755	RU484	Left	-7.45	-11.42	-6.30	<=30	Pass
		5795	RU484	Left	-7.59	-9.90	-5.75	<=30	Pass
802.11ax (HEW80)	MIMO	5775	RU996	Left	-10.98	-14.18	-9.37	<=30	Pass
Note1: Antenna Gain: Ant1: 2.71dBi; Ant2: 2.71dBi; Note2: Directional Gain: 5.72dBi Note3: Test result contains DCCF and RBW Factor RBW Factor= $10 \cdot \log(500/300)=2.22$									

4.2 Test Graph

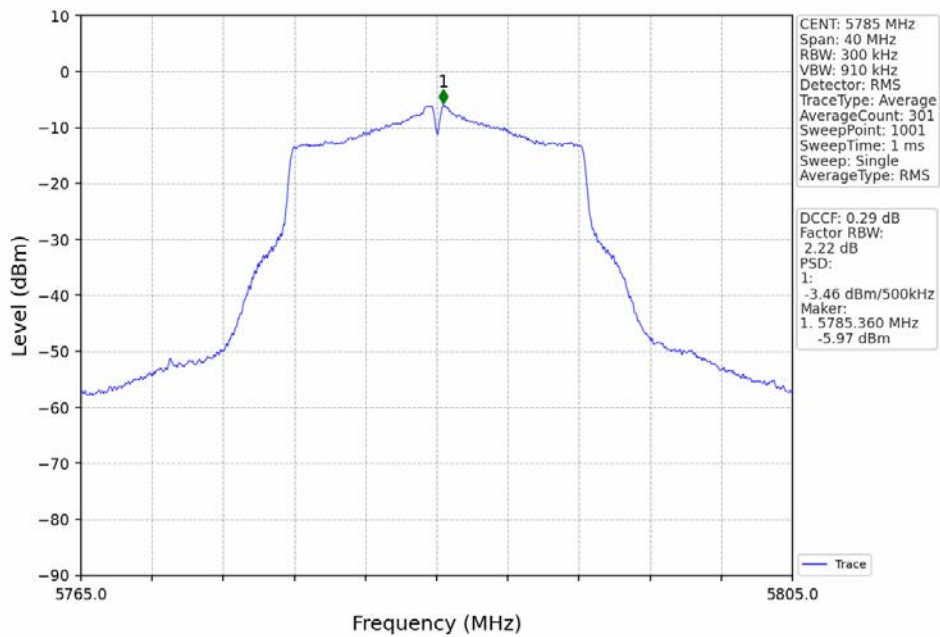
4.2.1 PSD-Band3



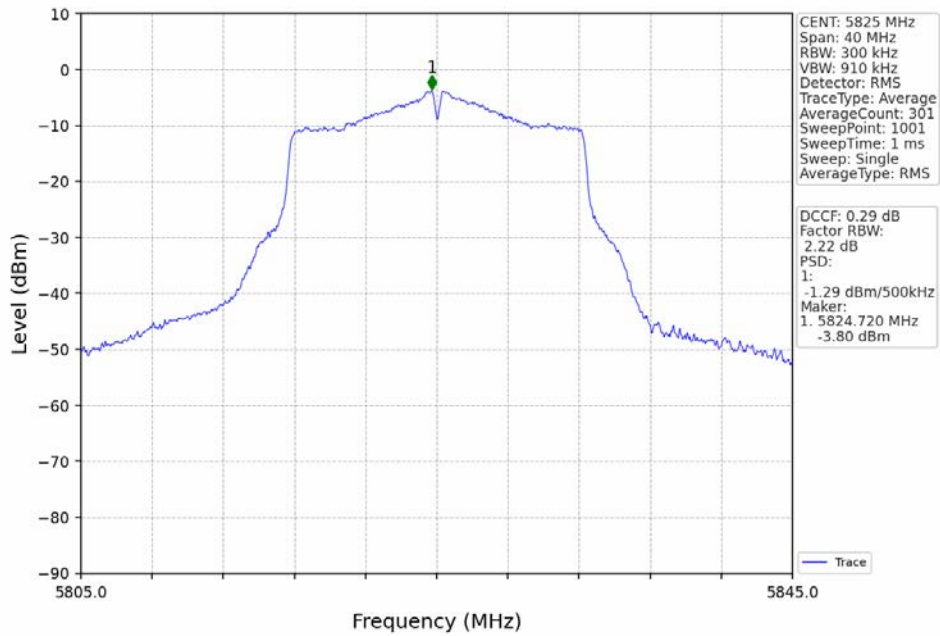
802.11a_MCH_5785MHz_Ant1_NTNV



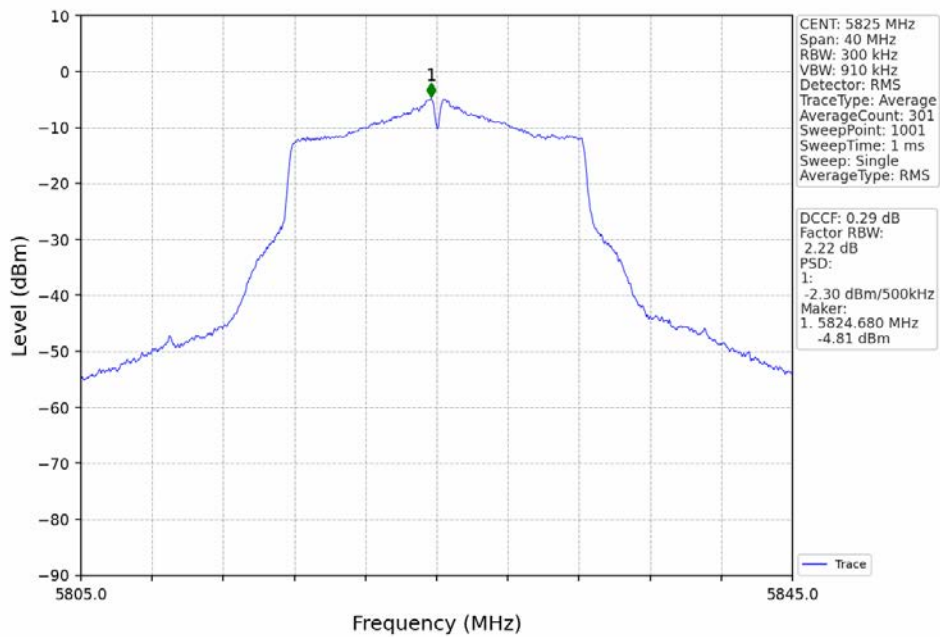
802.11a_MCH_5785MHz_Ant2_NTNV



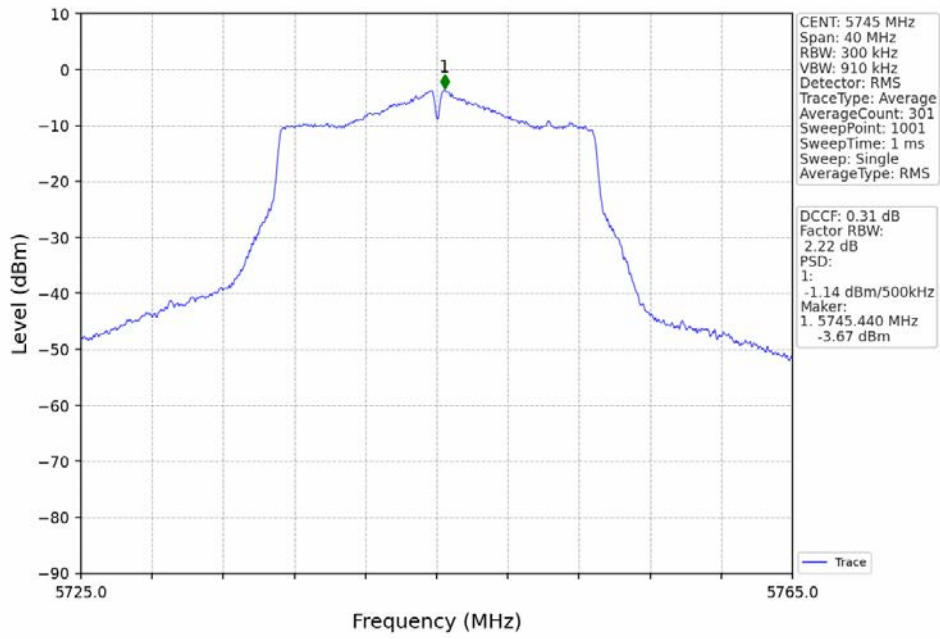
802.11a_HCH_5825MHz_Ant1_NTNV



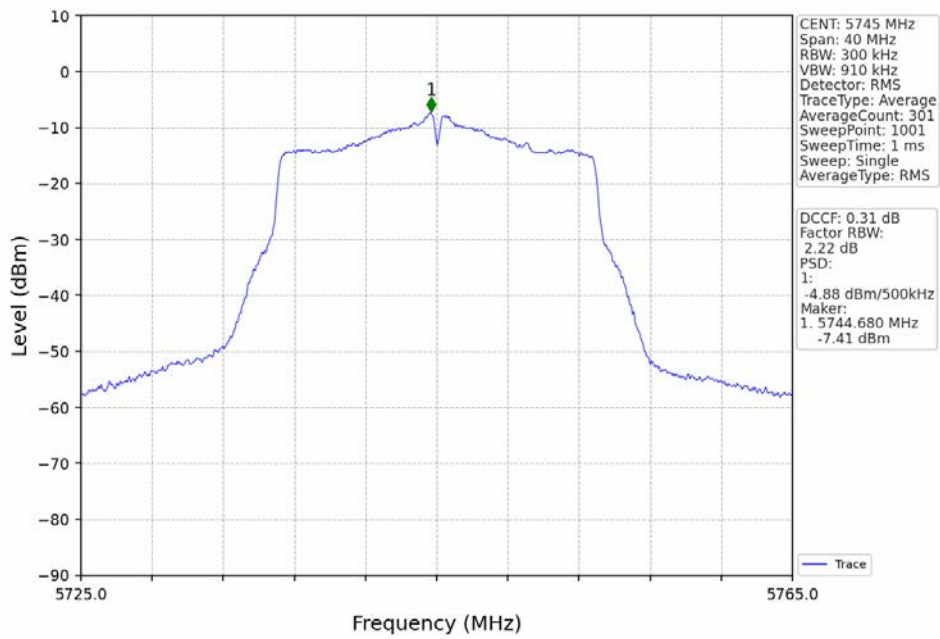
802.11a_HCH_5825MHz_Ant2_NTNV



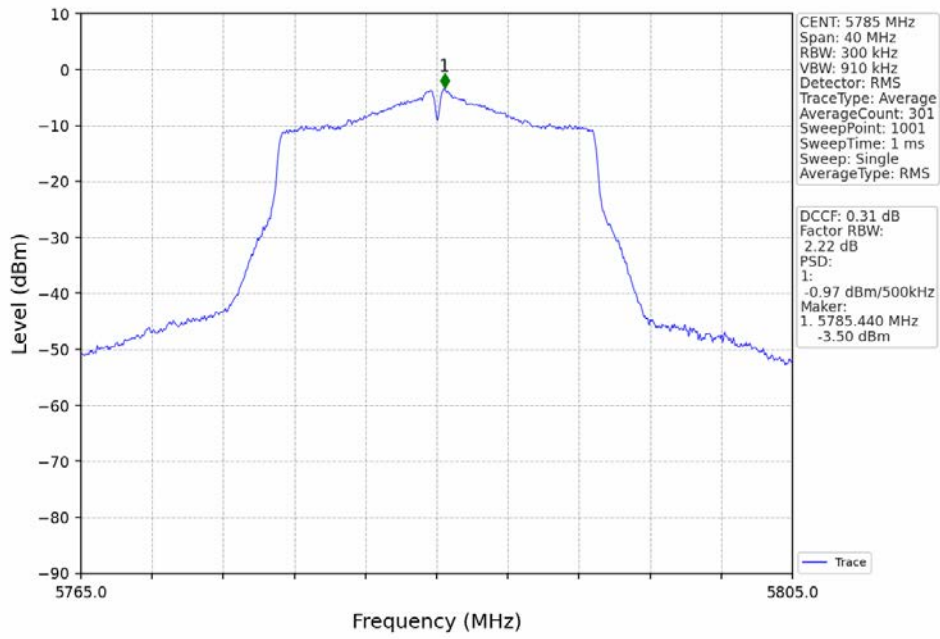
802.11n(HT20)_LCH_5745MHz_Ant1_NTNV



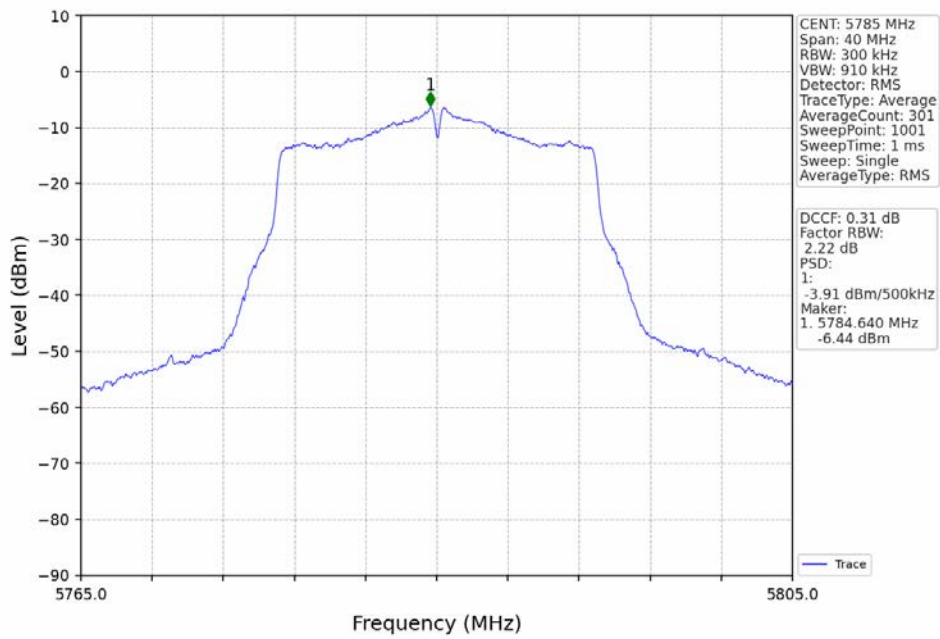
802.11n(HT20)_LCH_5745MHz_Ant2_NTNV



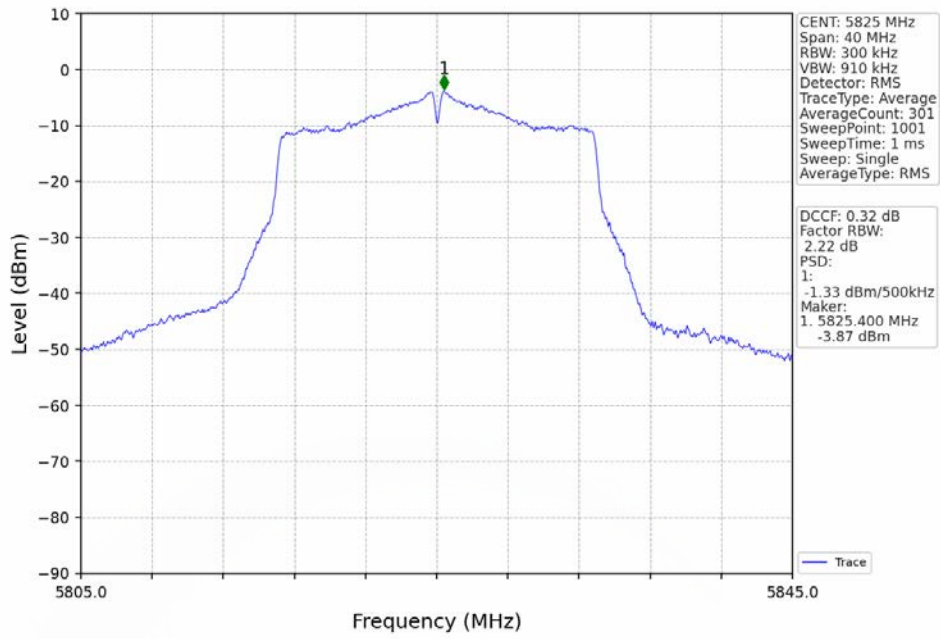
802.11n(HT20)_MCH_5785MHz_Ant1_NTNV



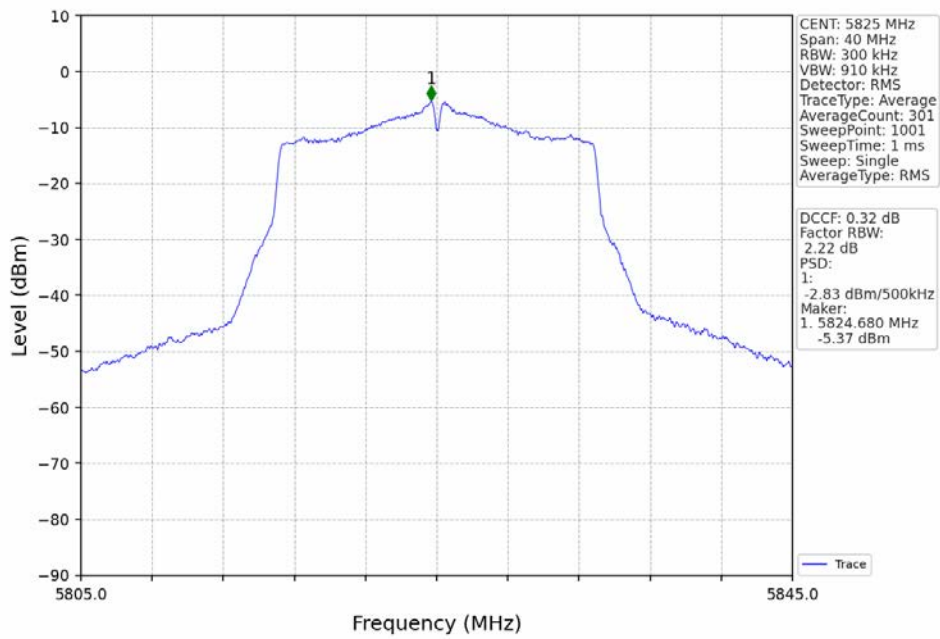
802.11n(HT20)_MCH_5785MHz_Ant2_NTNV



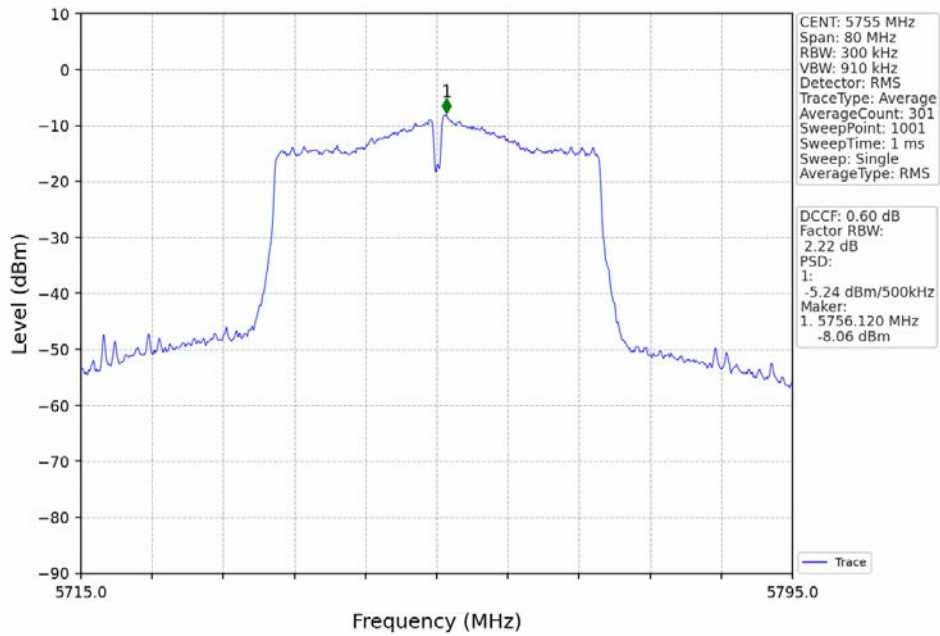
802.11n(HT20)_HCH_5825MHz_Ant1_NTNV



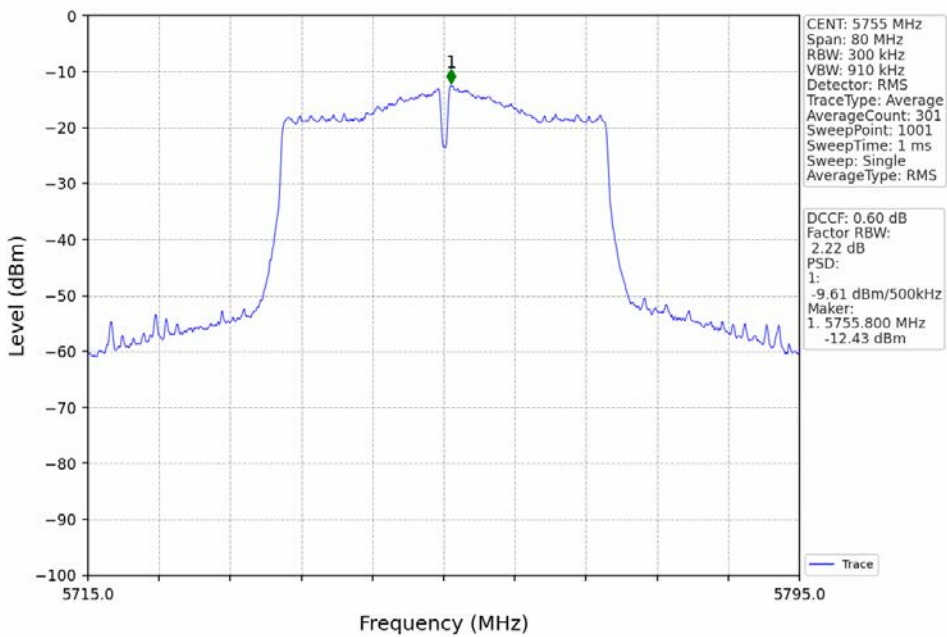
802.11n(HT20)_HCH_5825MHz_Ant2_NTNV



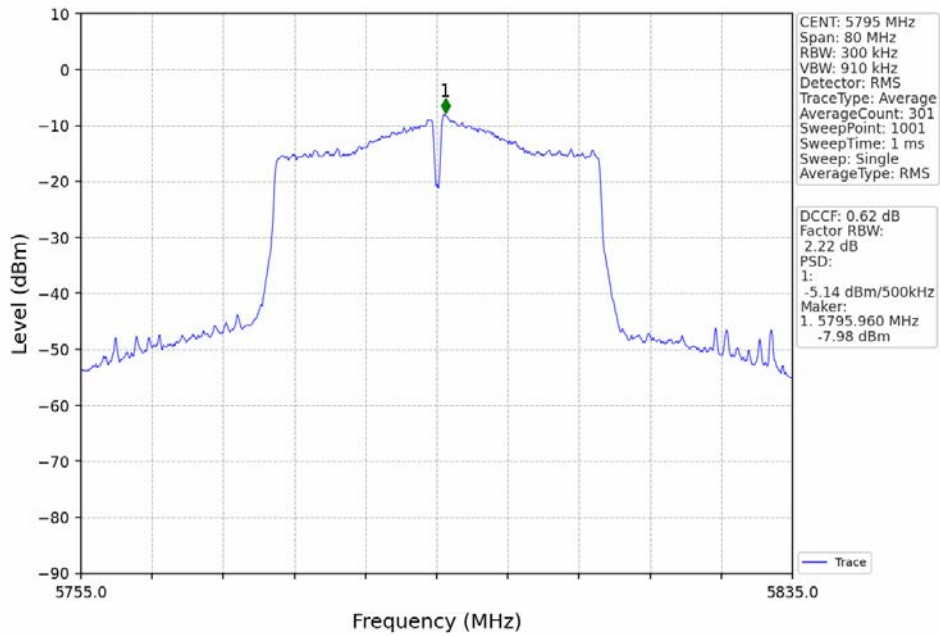
802.11n(HT40)_LCH_5755MHz_Ant1_NTNV



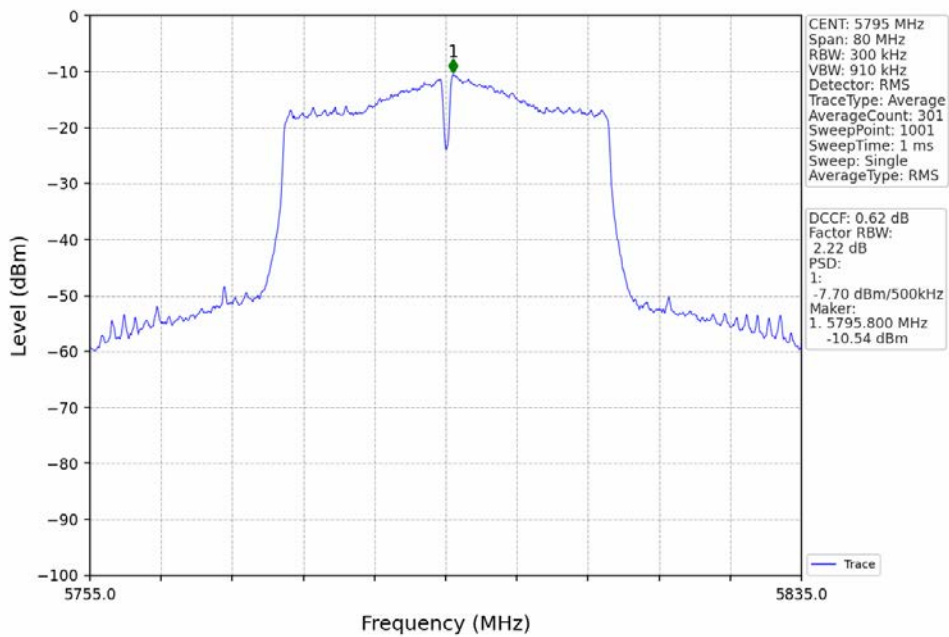
802.11n(HT40)_LCH_5755MHz_Ant2_NTNV



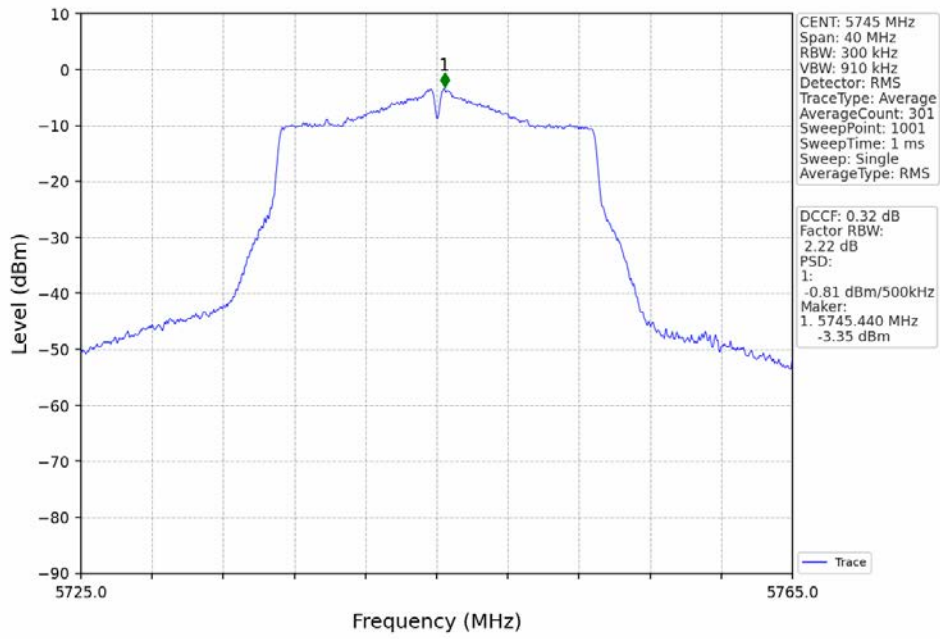
802.11n(HT40)_HCH_5795MHz_Ant1_NTNV



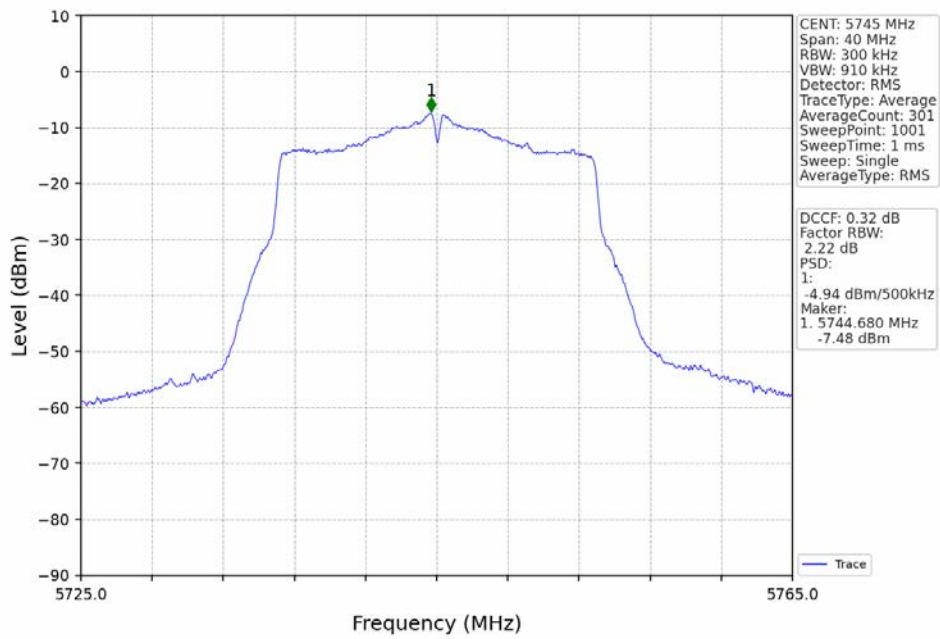
802.11n(HT40)_HCH_5795MHz_Ant2_NTNV



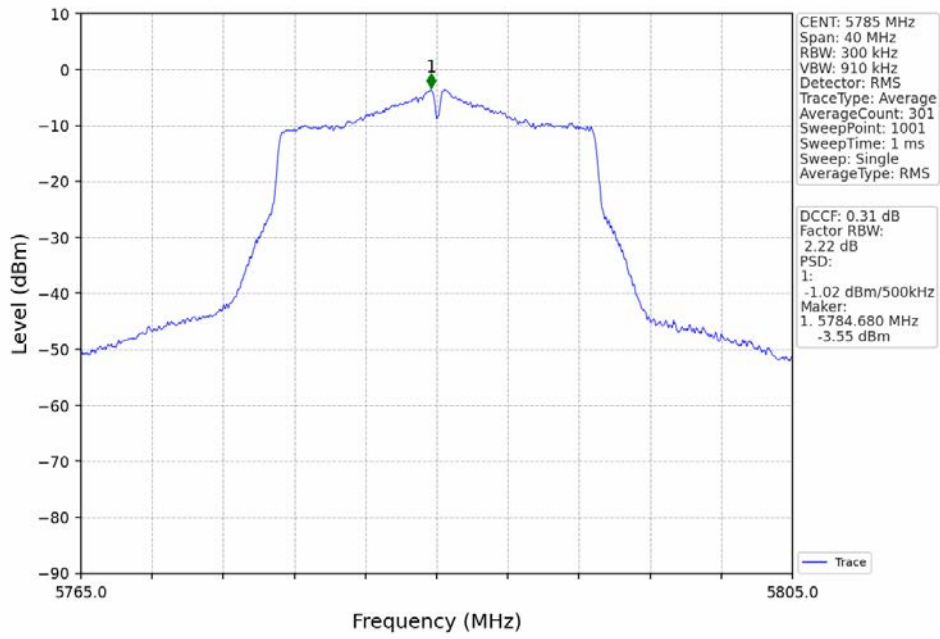
802.11ac(VHT20)_LCH_5745MHz_Ant1_NTNV



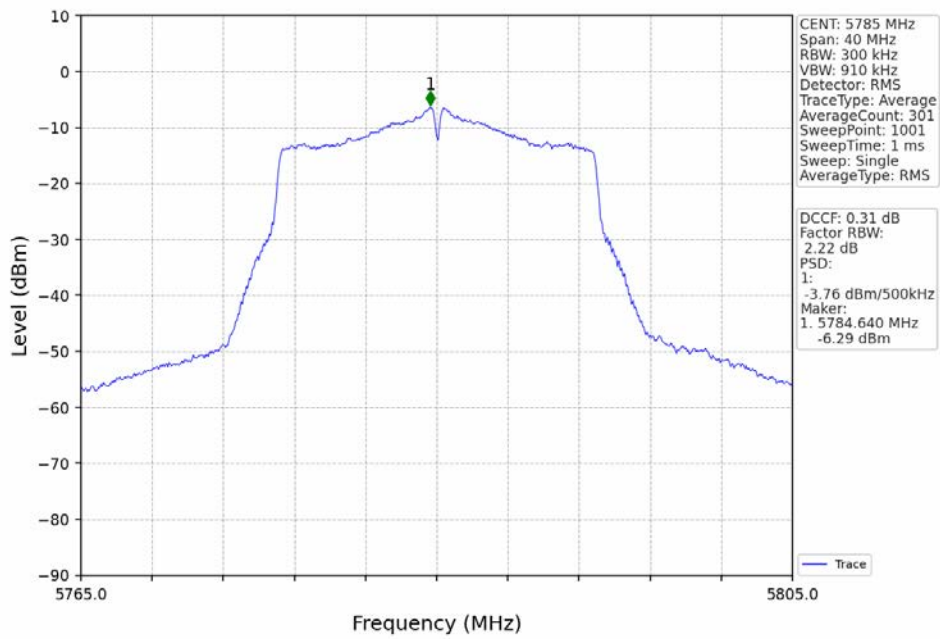
802.11ac(VHT20)_LCH_5745MHz_Ant2_NTNV



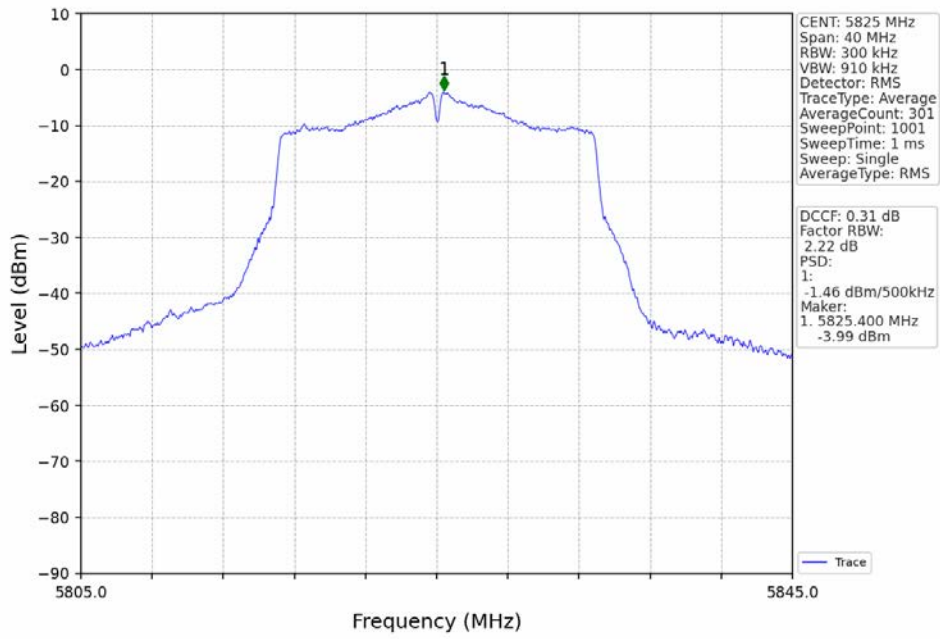
802.11ac(VHT20)_MCH_5785MHz_Ant1_NTNV



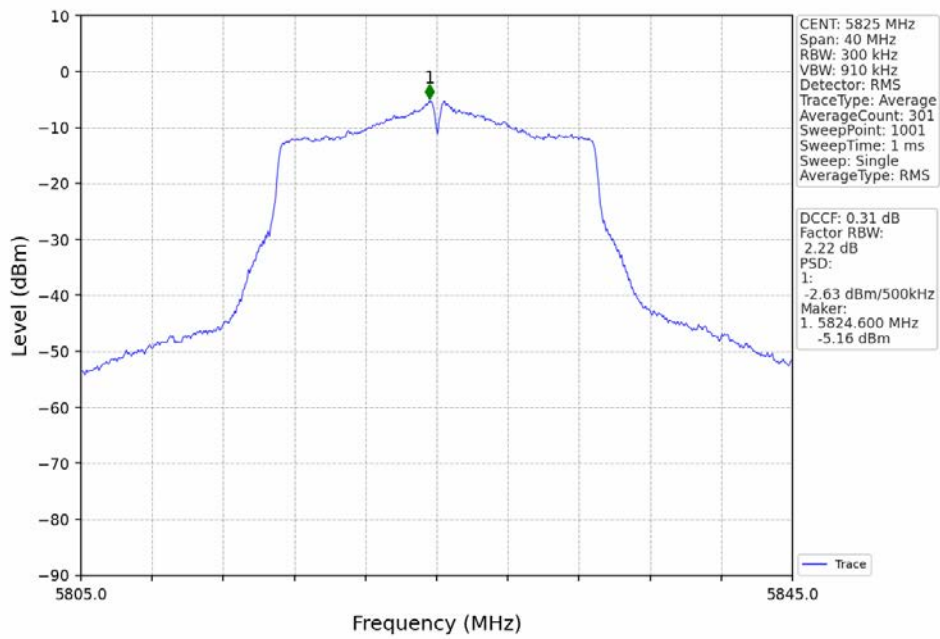
802.11ac(VHT20)_MCH_5785MHz_Ant2_NTNV



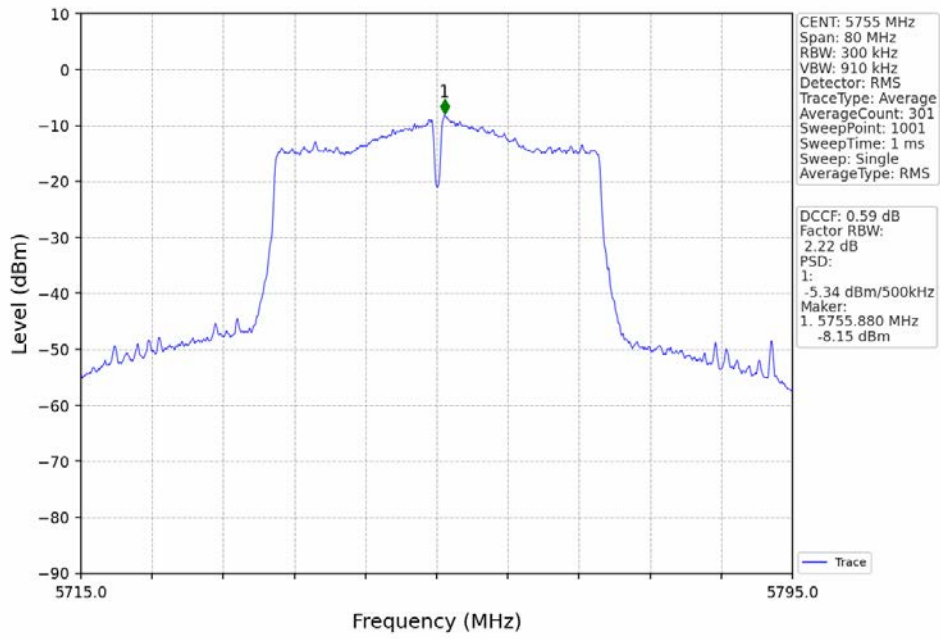
802.11ac(VHT20)_HCH_5825MHz_Ant1_NTNV



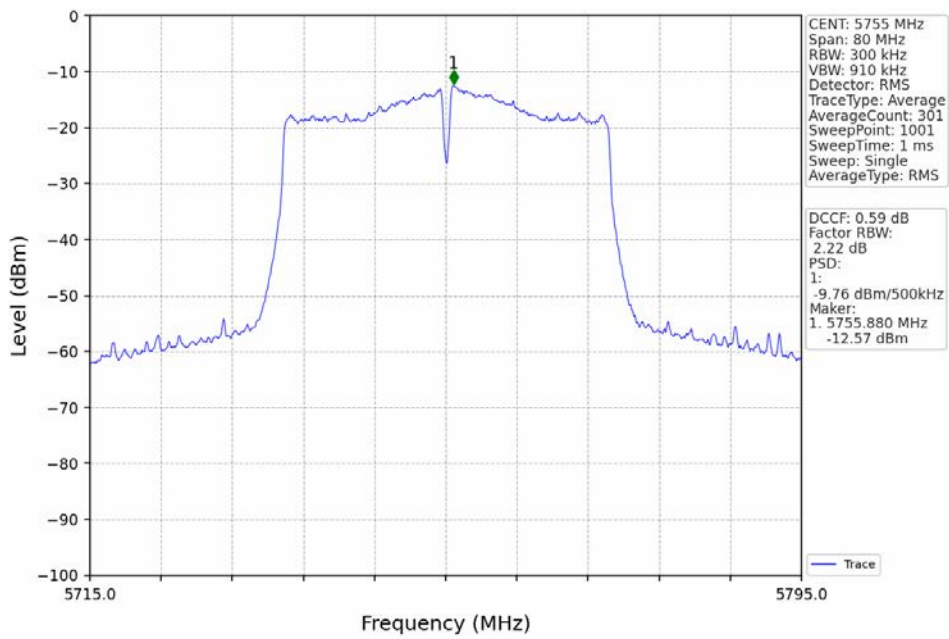
802.11ac(VHT20)_HCH_5825MHz_Ant2_NTNV



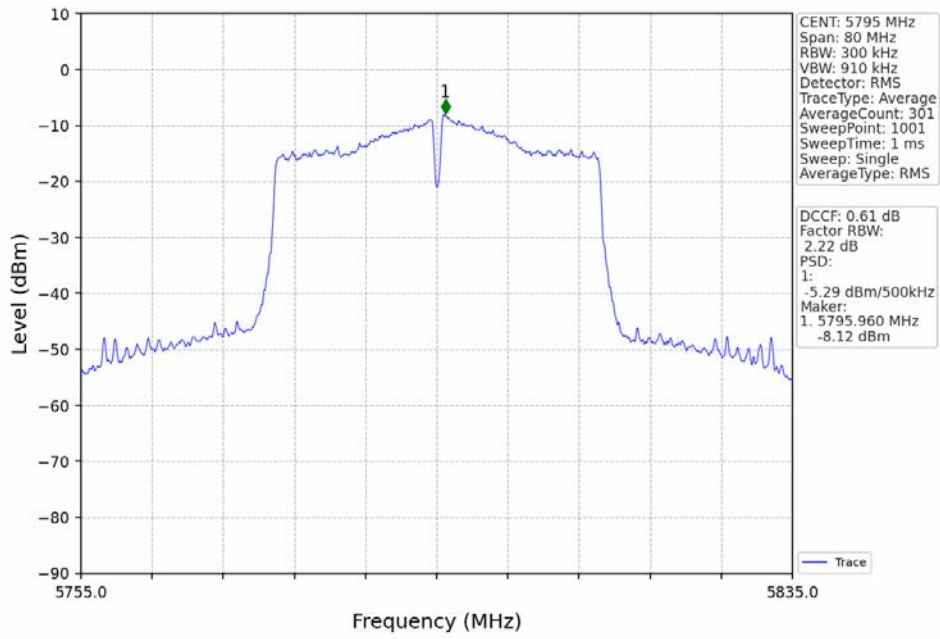
802.11ac(VHT40)_LCH_5755MHz_Ant1_NTNV



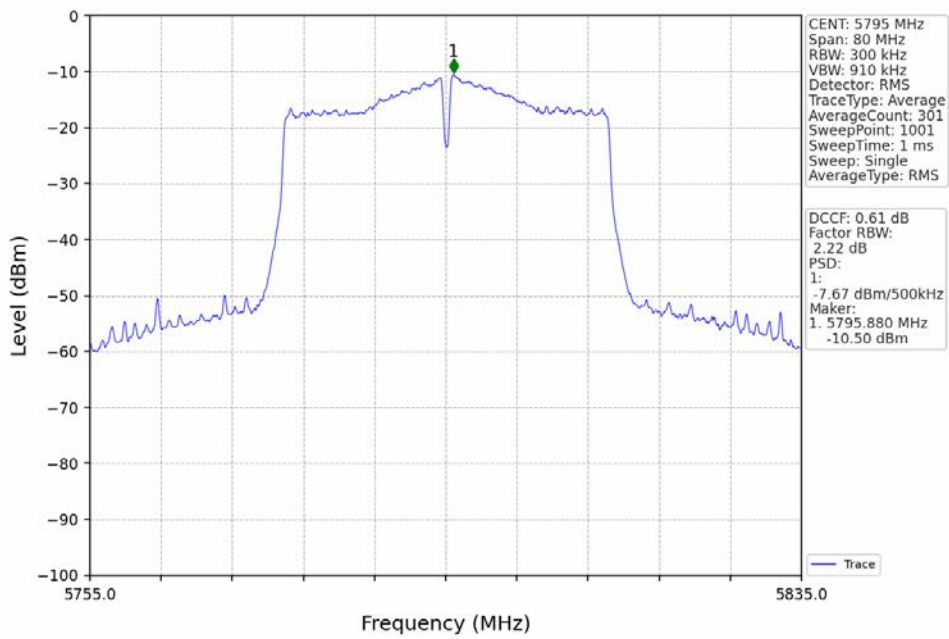
802.11ac(VHT40)_LCH_5755MHz_Ant2_NTNV



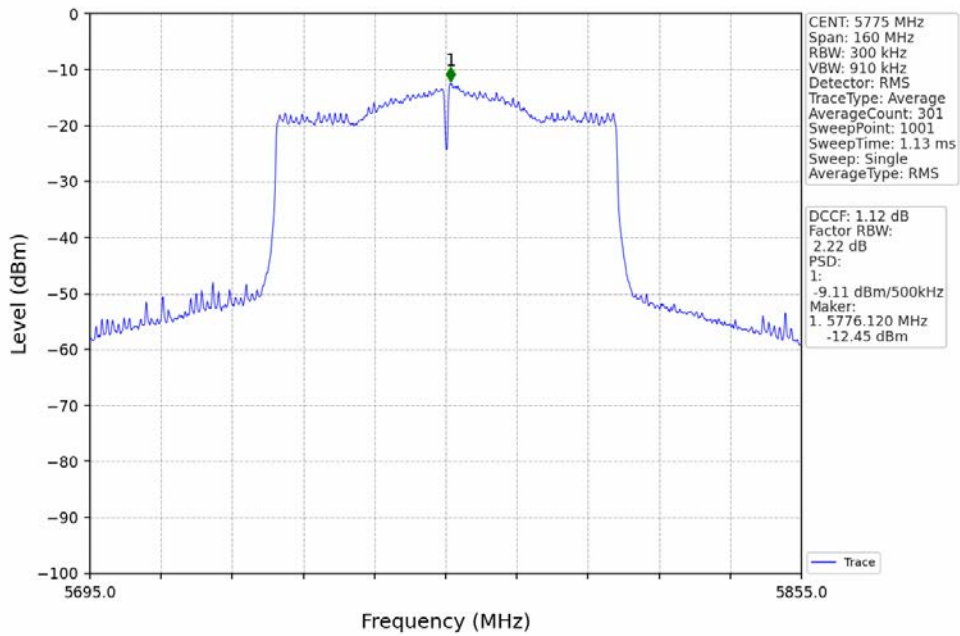
802.11ac(VHT40)_HCH_5795MHz_Ant1_NTNV



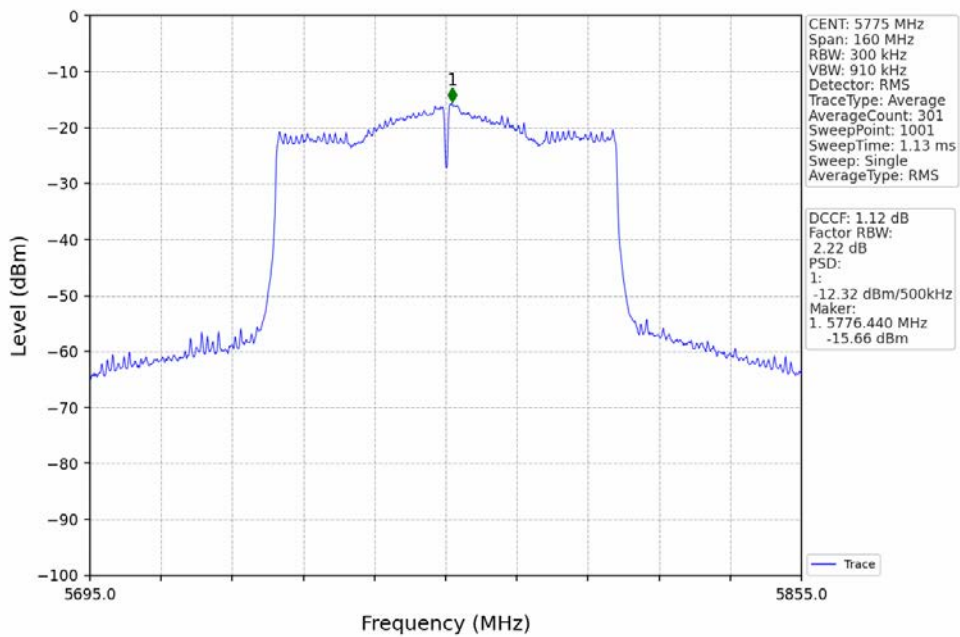
802.11ac(VHT40)_HCH_5795MHz_Ant2_NTNV



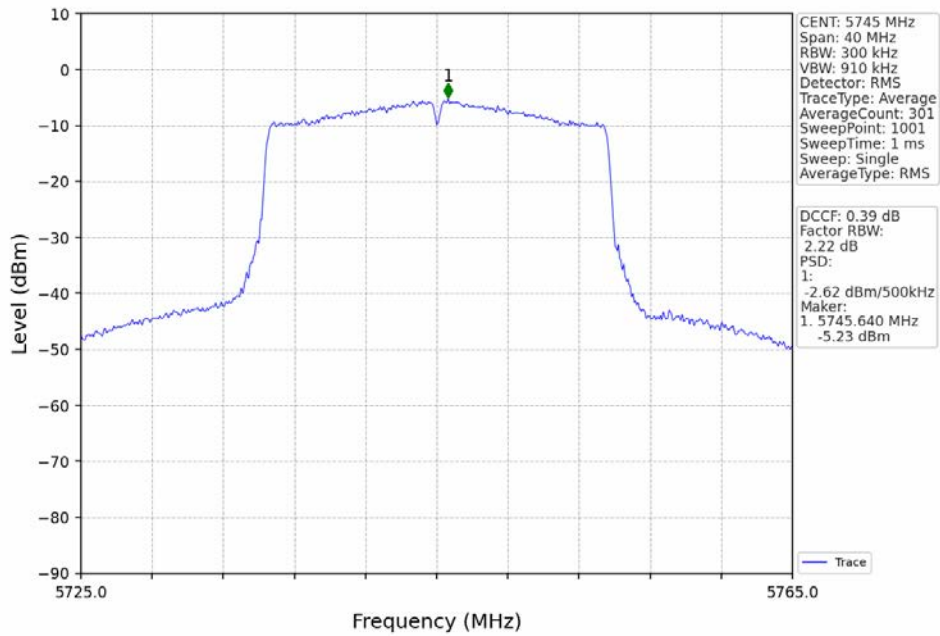
802.11ac(VHT80)_MCH_5775MHz_Ant1_NTNV



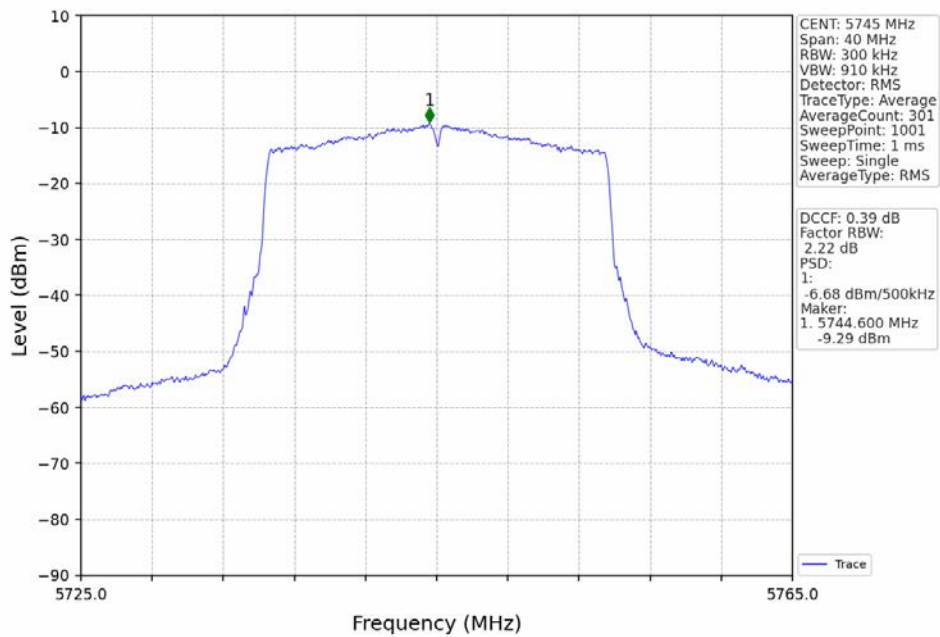
802.11ac(VHT80)_MCH_5775MHz_Ant2_NTNV



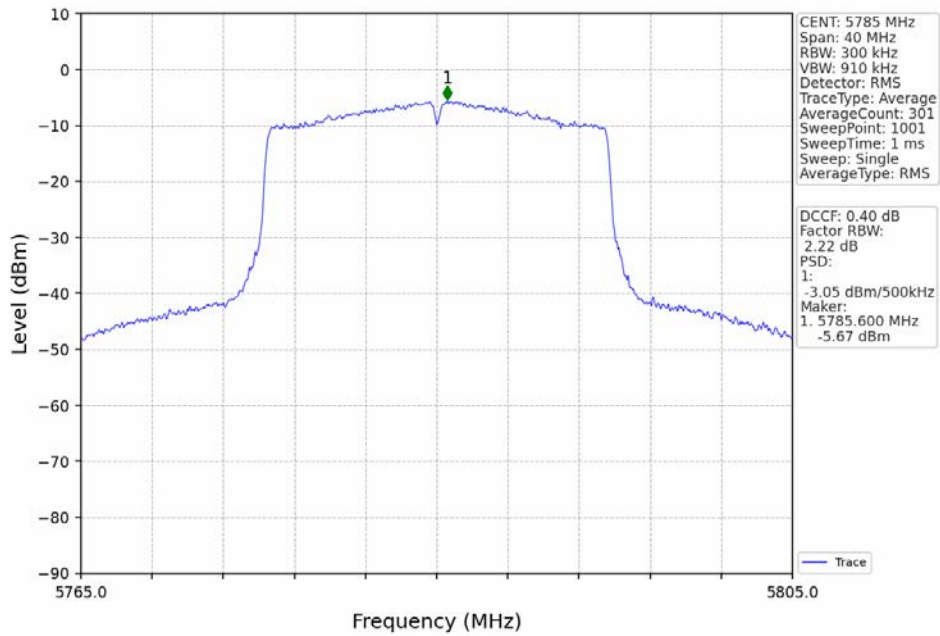
802.11ax(HEW20)_LCH_5745MHz_RU242_Left_Ant1_NTNV



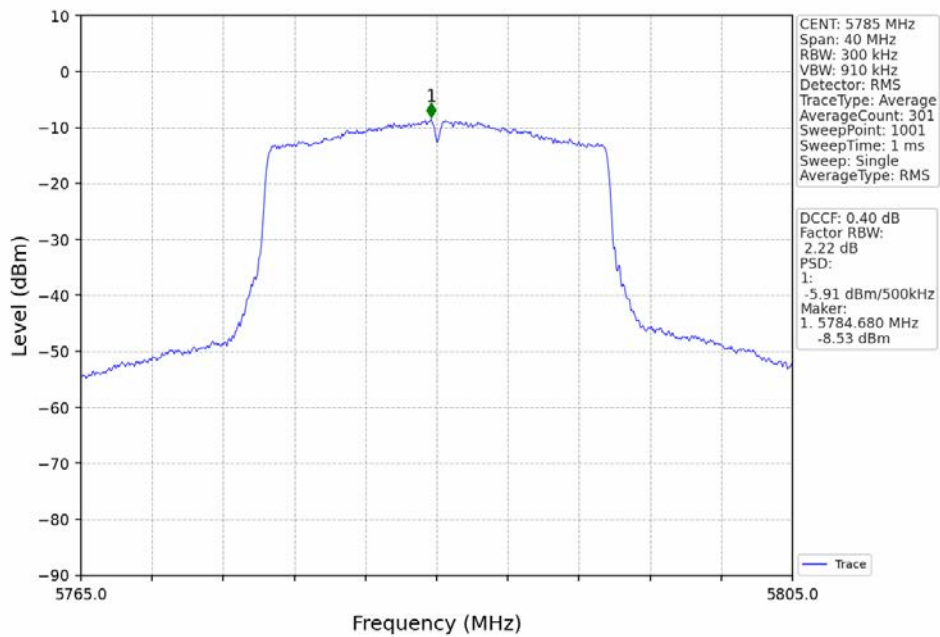
802.11ax(HEW20)_LCH_5745MHz_RU242_Left_Ant2_NTNV



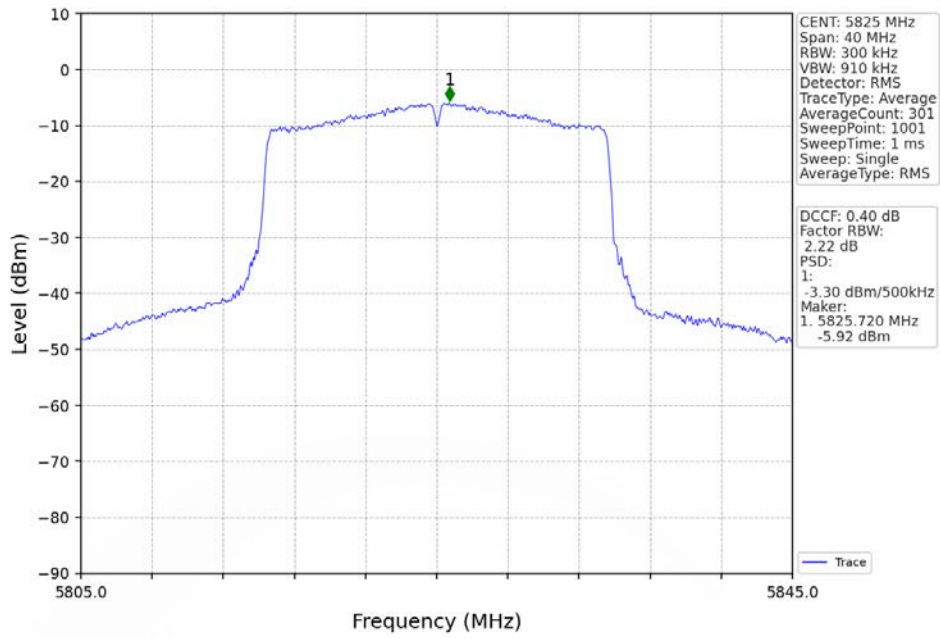
802.11ax(HEW20)_MCH_5785MHz_RU242_Left_Ant1_NTNV



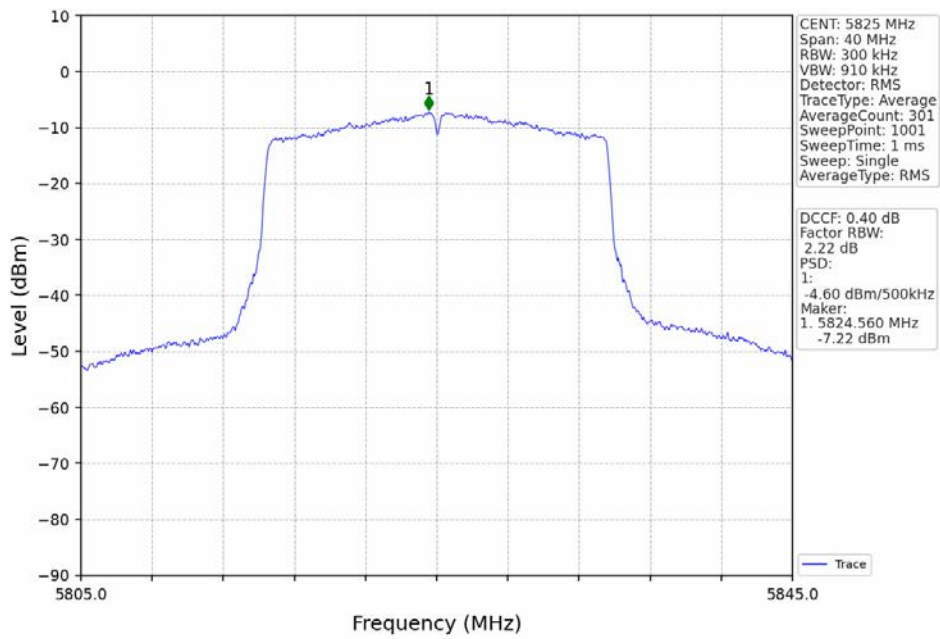
802.11ax(HEW20)_MCH_5785MHz_RU242_Left_Ant2_NTNV



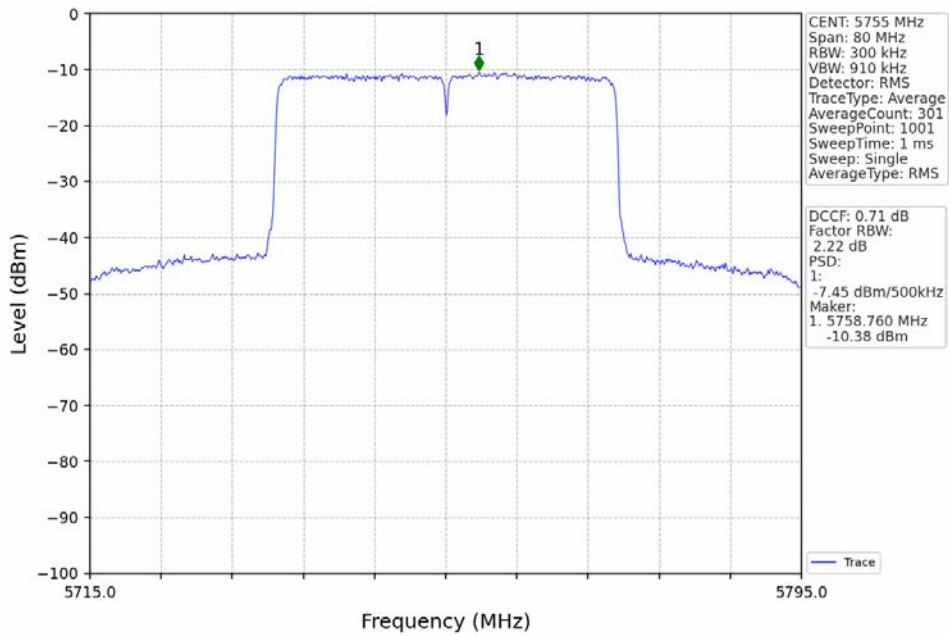
802.11ax(HEW20)_HCH_5825MHz_RU242_Left_Ant1_NTNV



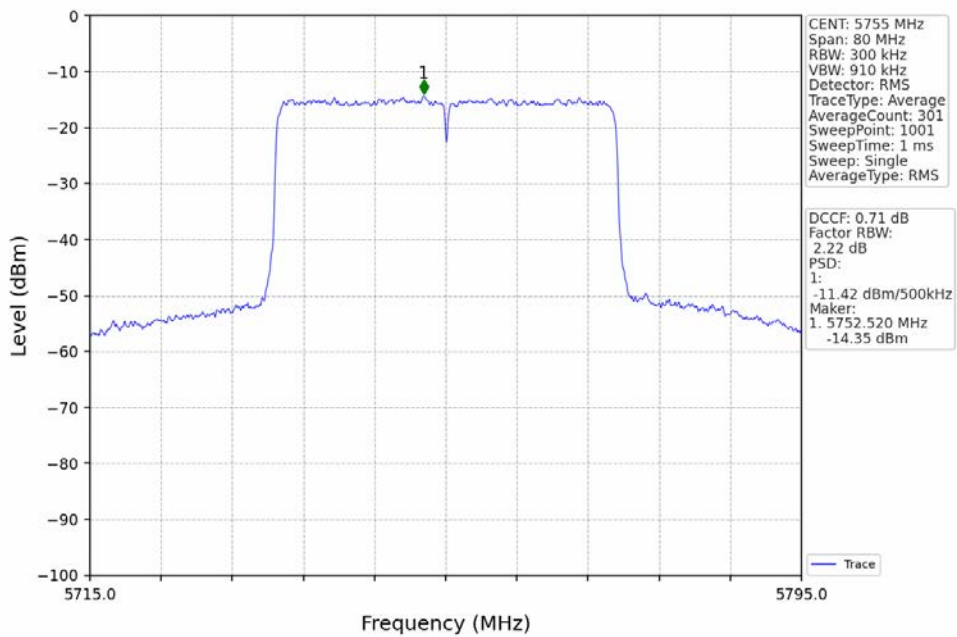
802.11ax(HEW20)_HCH_5825MHz_RU242_Left_Ant2_NTNV



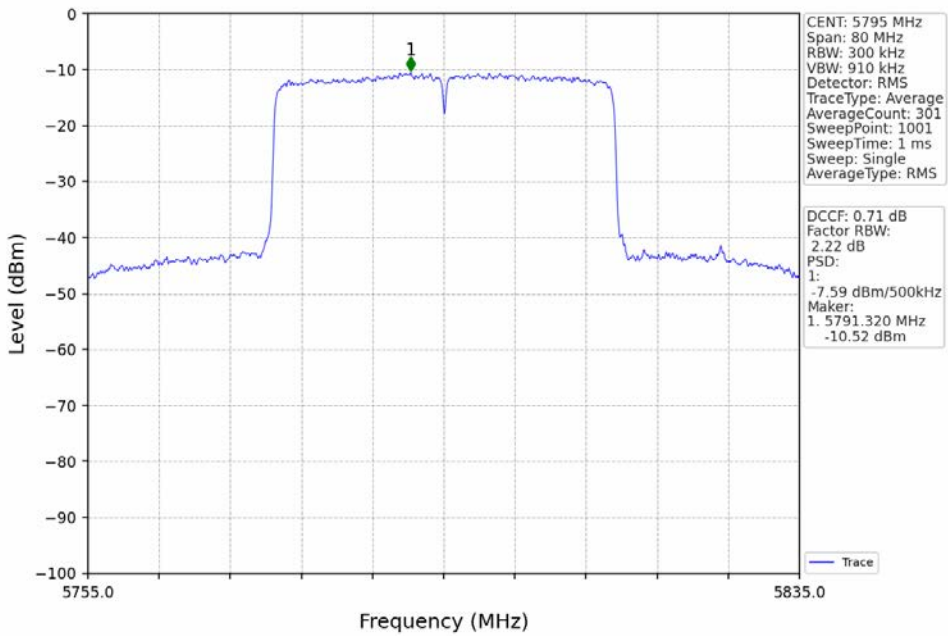
802.11ax(HEW40)_LCH_5755MHz_RU484_Left_Ant1_NTNV



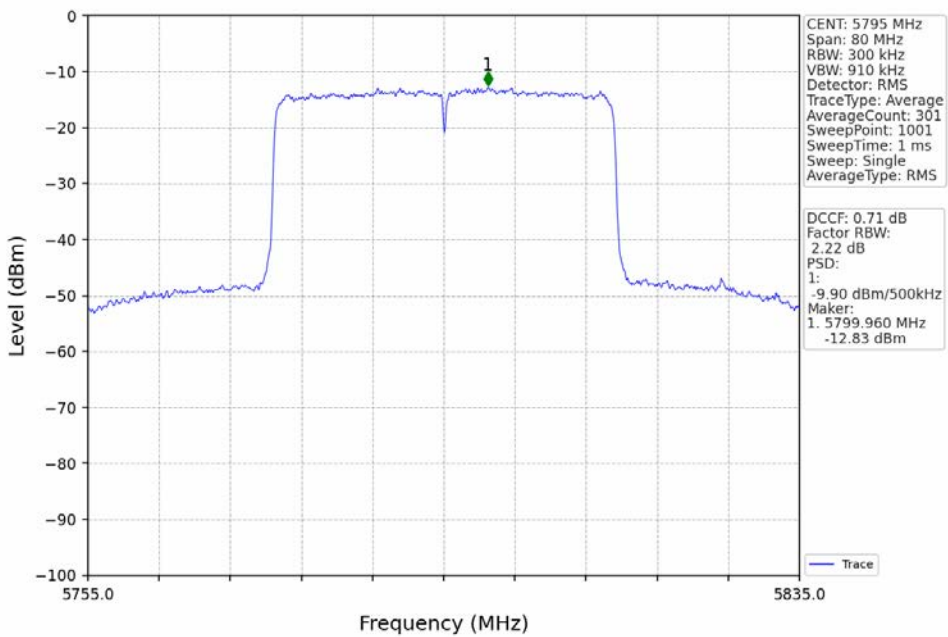
802.11ax(HEW40)_LCH_5755MHz_RU484_Left_Ant2_NTNV



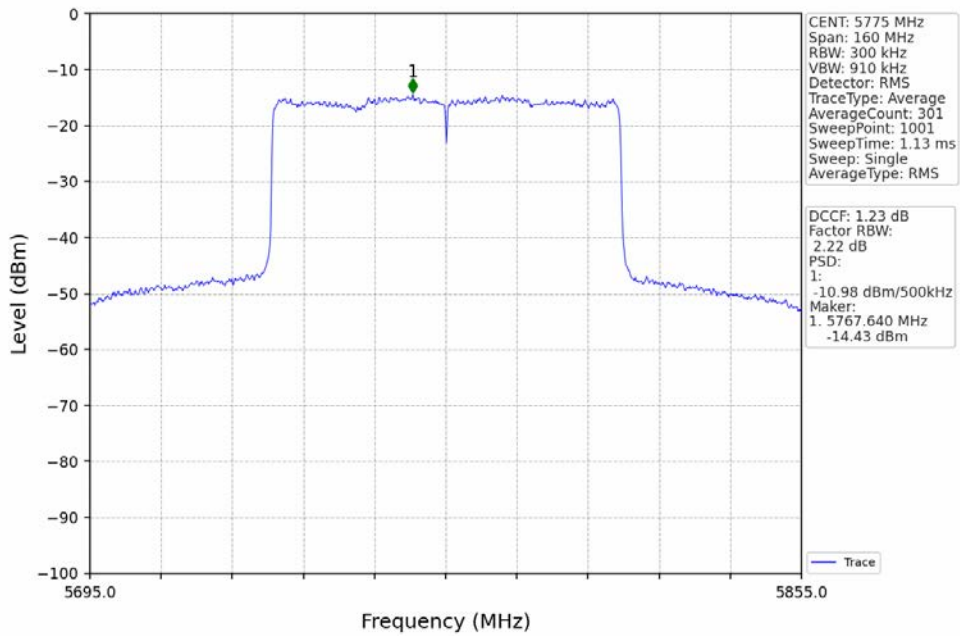
802.11ax(HEW40)_HCH_5795MHz_RU484_Left_Ant1_NTNV



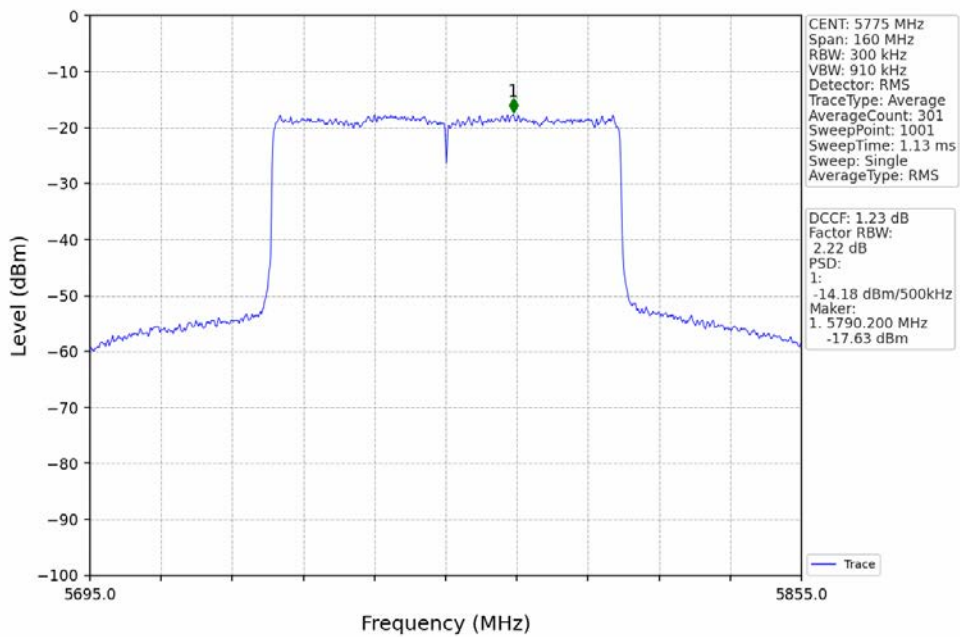
802.11ax(HEW40)_HCH_5795MHz_RU484_Left_Ant2_NTNV



802.11ax(HEW80)_MCH_5775MHz_RU996_Left_Ant1_NTNV



802.11ax(HEW80)_MCH_5775MHz_RU996_Left_Ant2_NTNV



5. Unwanted Emissions In Restricted Frequency Bands

5.1 Test Result

5.1.1 RSE

Mode	TX Type	Frequency (MHz)	RU	RU Pos	ANT	Level of Unwanted Emissions (dBm)		Verdict
						Result	Limit	
802.11a	SISO	5745	/	/	1	Refer To Test Graph	Pass	
					2	Refer To Test Graph	Pass	
		5785	/	/	1	Refer To Test Graph	Pass	
					2	Refer To Test Graph	Pass	
		5825	/	/	1	Refer To Test Graph	Pass	
					2	Refer To Test Graph	Pass	
802.11n (HT20)	MIMO	5745	/	/	1	Refer To Test Graph	Pass	
					2	Refer To Test Graph	Pass	
					MIMO	Refer To Test Graph	Pass	
		5785	/	/	1	Refer To Test Graph	Pass	
					2	Refer To Test Graph	Pass	
					MIMO	Refer To Test Graph	Pass	
		5825	/	/	1	Refer To Test Graph	Pass	
					2	Refer To Test Graph	Pass	
					MIMO	Refer To Test Graph	Pass	
802.11n (HT40)	MIMO	5755	/	/	1	Refer To Test Graph	Pass	
					2	Refer To Test Graph	Pass	
					MIMO	Refer To Test Graph	Pass	
		5795	/	/	1	Refer To Test Graph	Pass	
					2	Refer To Test Graph	Pass	
					MIMO	Refer To Test Graph	Pass	
802.11ac (VHT20)	MIMO	5745	/	/	1	Refer To Test Graph	Pass	
					2	Refer To Test Graph	Pass	
					MIMO	Refer To Test Graph	Pass	
		5785	/	/	1	Refer To Test Graph	Pass	
					2	Refer To Test Graph	Pass	
					MIMO	Refer To Test Graph	Pass	
		5825	/	/	1	Refer To Test Graph	Pass	
					2	Refer To Test Graph	Pass	
					MIMO	Refer To Test Graph	Pass	
802.11ac (VHT40)	MIMO	5755	/	/	1	Refer To Test Graph	Pass	
					2	Refer To Test Graph	Pass	
					MIMO	Refer To Test Graph	Pass	
		5795	/	/	1	Refer To Test Graph	Pass	
					2	Refer To Test Graph	Pass	
					MIMO	Refer To Test Graph	Pass	
802.11ac (VHT80)	MIMO	5775	/	/	1	Refer To Test Graph	Pass	
					2	Refer To Test Graph	Pass	
					MIMO	Refer To Test Graph	Pass	
		5745	RU242	Left	1	Refer To Test Graph	Pass	
					2	Refer To Test Graph	Pass	
					MIMO	Refer To Test Graph	Pass	
5785	RU242	Left	1	Refer To Test Graph	Pass			
			2	Refer To Test Graph	Pass			
			MIMO	Refer To Test Graph	Pass			
5825	RU242	Left	1	Refer To Test Graph	Pass			
			2	Refer To Test Graph	Pass			
			MIMO	Refer To Test Graph	Pass			
802.11ax	MIMO	5755	RU484	Left	1	Refer To Test Graph	Pass	



(HEW40)		5795	RU484	Left	2	Refer To Test Graph	Pass
					MIMO	Refer To Test Graph	Pass
					1	Refer To Test Graph	Pass
					2	Refer To Test Graph	Pass
					MIMO	Refer To Test Graph	Pass
802.11ax (HEW80)	MIMO	5775	RU996	Left	1	Refer To Test Graph	Pass
					2	Refer To Test Graph	Pass
					MIMO	Refer To Test Graph	Pass
					MIMO	Refer To Test Graph	Pass



5.2 Test Graph

5.2.1 RSE

