

深圳市亿圣邦科技有限公司 样品承认书

SPECIFICATION FOR APPROVAL

公司名称 (客户填写) : 深圳亿莱顿科技有限公司
物料代码 (客户填写) : _____
规格型号 (客户填写) : WF2458
承认日期 (客户填写) : _____
供应商名称 (SLK 填写) : 深圳市亿圣邦科技有限公司
供应商规格型号 (SLK 填写) : WIFI 1:SLK-YLD-3222A1-R-460I-B

承认签章

供应商承认 (SLK 填写栏)			深圳市亿莱顿科技有限公司		
工程师	品质	结构	工程师	审核	批准
胡雪文	陈揭兴	刘才亮	刘建红		
批准		林美财	盖章签署		
日期	2024-5-29		日期		
批示: <input type="checkbox"/> 接受 <input type="checkbox"/> 有条件接受					
备注 (客户填写) :					

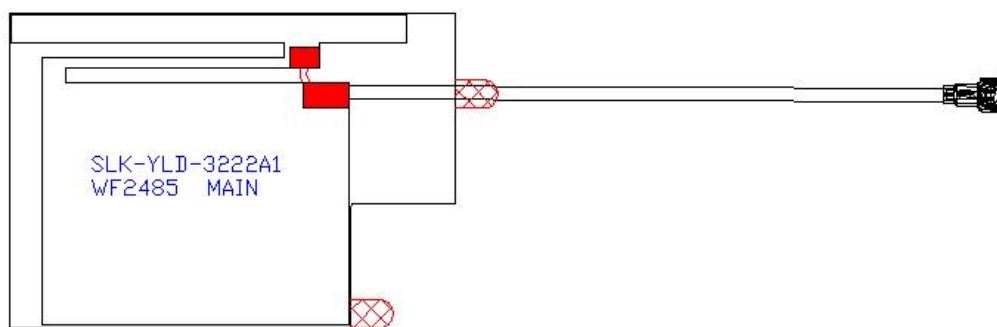
供应商名称: 深圳市亿圣邦科技有限公司
Manufacturer: Shenzhen Yishengbang Technology Co., Ltd.
供应商地址: 深圳市宝安区深圳前湾硬科技产业园 C 栋 101
Address: Room 101, Building C, Qianwan Hard Technology Industrial Park, Baoan District, Shenzhen, China
电 话: 18025305599 电 话: 18666299104

WIFI 1 Antenna (3222A1)

1.Explanation of Product number :

S L K - Y L D - 3 2 2 2 A 1 - R - 4 6 0 I - B

1 2 3 4 5



Product Code:

(1) Customer:

YLD:亿莱顿

(2) Project:

3222A1:SK-3222A1 (WIFI antenna)

(3) Welding Position

L: Left

(4) Cable Length:

460I: 460*1.13MM一代端子

(5)Cable Color

B:Black

2. Features

*Stable and reliable in performances

*Compact size

*RoHS compliance

3. Applications

- * IEEE802.11 (a/b/g/n)
- * Hand-held devices when WIFI (802.11a/b/g/n) functions are needed

4. Description

Holy bond's FPC antenna series are specially designed for WIFI (802.11a/b/g/n) applications. Based on Holy bond's proprietary design and processes, this FPC antenna has excellent stability and sensitivity to consistently provide high signal reception efficiency.

5. Electrical Specifications

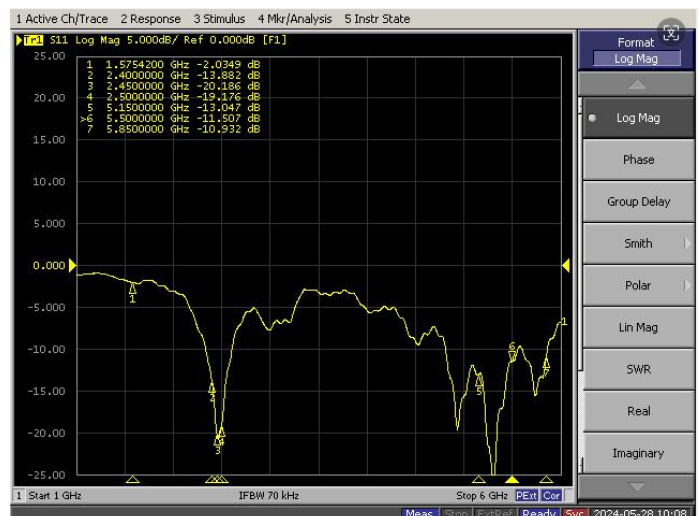
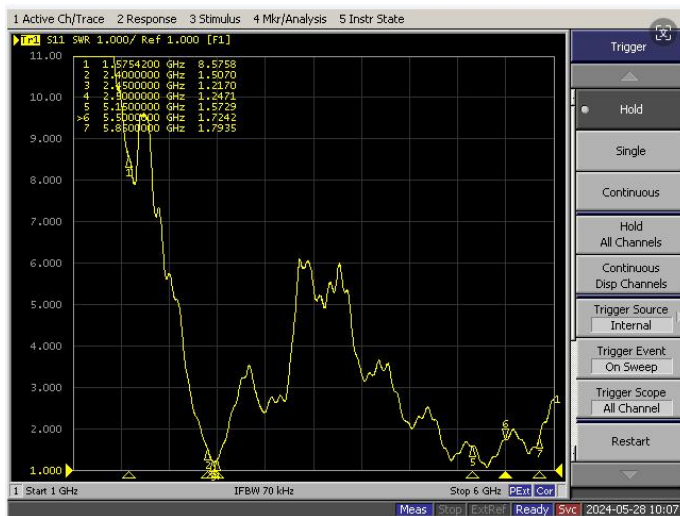
5-1

Characteristics	Specifications	Unit
Outline Dimensions	31.95x22.5x0.12	mm
Center Frequency	2400-2500 5150-5850	MHz
Bandwidth(under-10dB return loss)	130min	MHz
VSWR	5max	

5.2

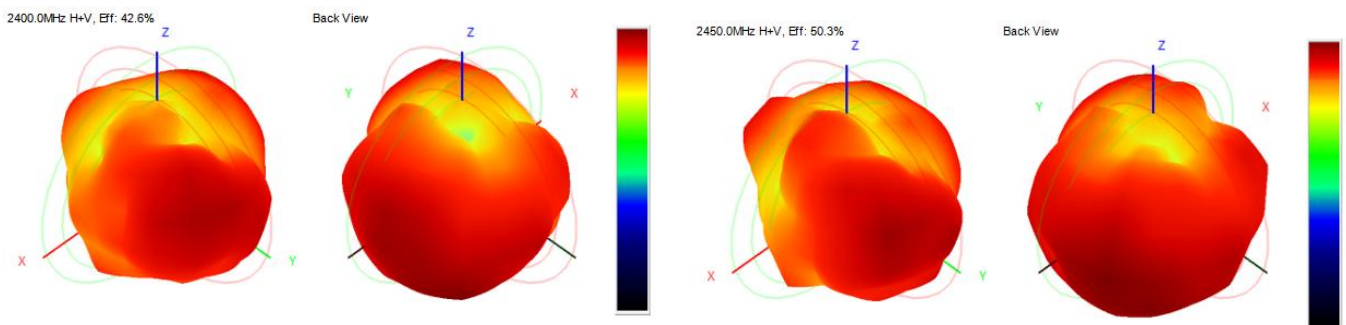
VSWR

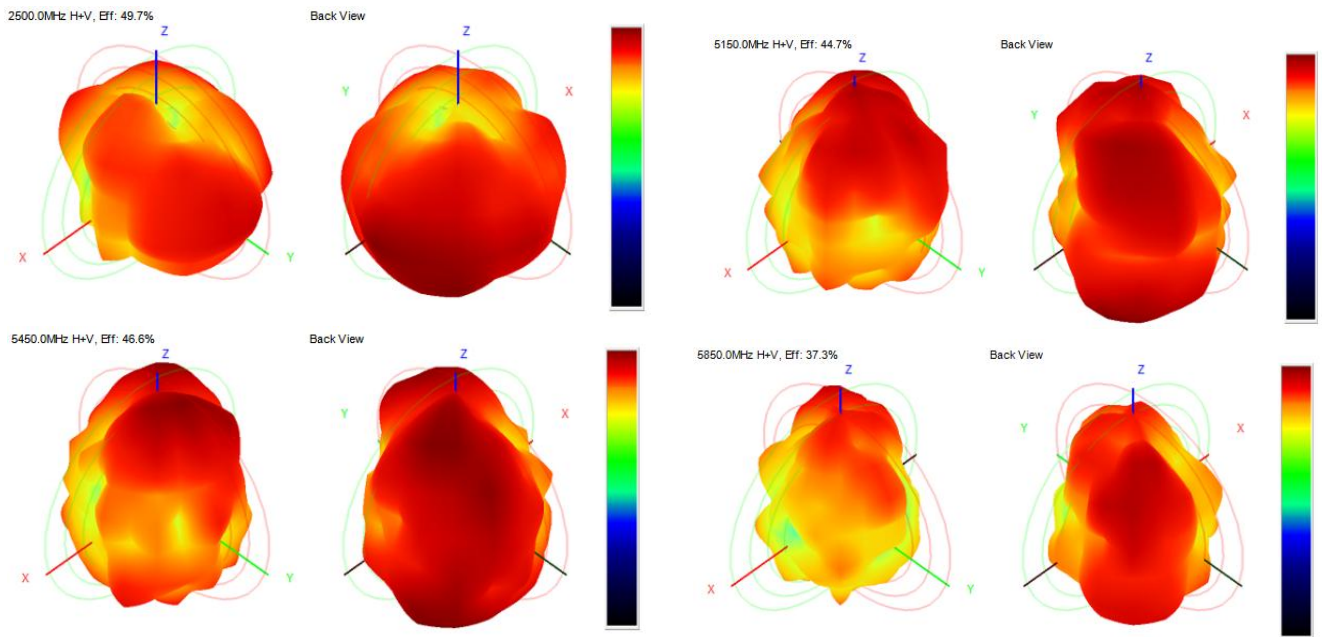
S11



5-3.WIFI 1 Antenna Gain/Efficiency/Radiation Pattern of 3D

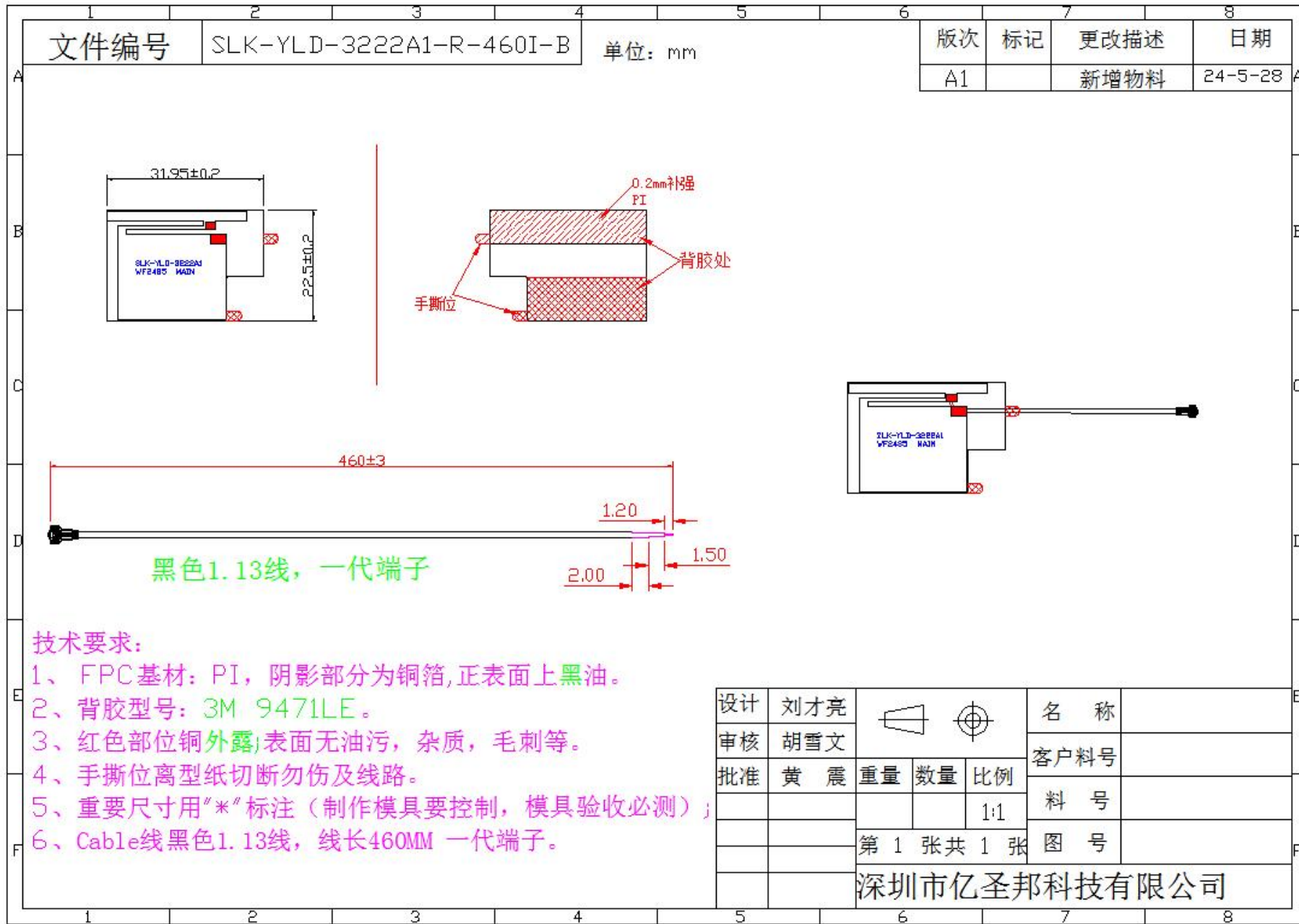
Frequency (MHz)	Efficiency (dBi)	Gain (dBi)	Efficiency (%)
2400	-3.70	1.43	42.63
2410	-3.47	1.65	45.01
2420	-2.85	1.45	51.87
2430	-2.95	2.09	50.72
2440	-2.85	2.15	51.85
2450	-2.98	1.83	50.31
2460	-2.74	1.18	53.17
2470	-3.12	1.24	48.72
2480	-3.17	1.45	48.20
2490	-2.92	1.86	51.03
2500	-3.03	1.78	49.75
5150	-3.50	2.97	44.66
5250	-3.63	2.99	43.36
5350	-3.48	2.75	44.85
5450	-3.31	2.68	46.61
5550	-3.94	2.51	40.37
5650	-3.71	2.56	42.53
5750	-3.84	2.96	41.30
5850	-4.28	2.13	37.30





WIFI 有源测试			
频段	1	6	11
B-TRP-11Mbps	13.78	13.66	13.27
B-TIS-11Mbps	-81.69	-82.16	-82.40
G-TRP-54Mbps	12.69	12.88	12.17
G-TIS-54Mbps	-70.68	-70.08	-69.88
N-TRP-MCS7	12.08	12.24	12.30
N-TIS-MCS7	-66.58	-67.03	-67.24
频段	36	149	165
A-TRP-54Mbps	11.28	11.49	11.68
A-TIS-54Mbps	-71.33	-71.58	-71.66

6. Antenna Dimensions (unit: mm)



7. Antenna Picture

