

# 深圳市亿圣邦科技有限公司 样品承认书

## SPECIFICATION FOR APPROVAL

公司名称 (客户填写): 深圳亿莱顿科技有限公司  
物料代码 (客户填写): \_\_\_\_\_  
规格型号 (客户填写): WF2158  
承认日期 (客户填写): \_\_\_\_\_  
供应商名称 (SLK 填写): 深圳市亿圣邦科技有限公司  
供应商规格型号 (SLK 填写): WIFI 2:SLK-YLD-3222B-R-460I-B

承 认 签 章					
供 应 商 承 认 (SLK 填写栏)			深圳市亿莱顿科技有限公司		
工 程 师	品 质	结 构	工 程 师	审 核	批 准
胡雪文	陈揭兴	刘才亮	刘建红		
批 准		林美财	盖 章 签 署		
日 期	2024-5-23	日 期			
批示: <input type="checkbox"/> 接受 <input type="checkbox"/> 有条件接受					
备注 (客户填写):					

供应商名称: 深圳市亿圣邦科技有限公司  
Manufacturer: Shenzhen Yishengbang Technology Co., Ltd.  
供应商地址: 深圳市宝安区深圳前湾硬科技产业园 C 栋 101  
Address: Room 101, Building C, Qianwan Hard Technology Industrial Park, Baoan District, Shenzhen, China  
电 话: 18025305599 电 话: 18666299104

# WIFI 2 Antenna (3222B)

## 1.Explanation of Product number :

**S L K - Y L D - 3 2 2 2 B - R - 4 6 0 I - B**

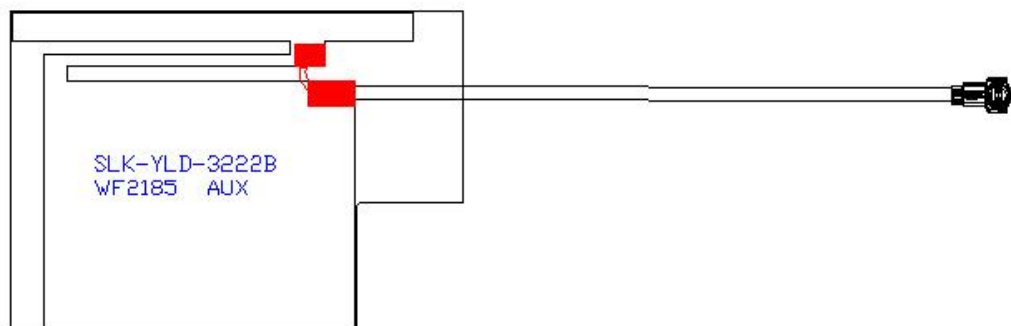
**1**

**2**

**3**

**4**

**5**



Product Code:

(1) Customer:

YLD:亿莱顿

(2) Project:

3222B:SK-3222B (WIFI antenna)

(3) Welding Position

L: Left

(4) Cable Length:

460I: 460\*1.13MM一代端子

(5)Cable Color

B:Black

## 2. Features

\*Stable and reliable in performances

\*Compact size

\*RoHS compliance

### 3. Applications

- \* IEEE802.11 (b/g/n)
- \* Hand-held devices when WIFI (802.11b/g/n) functions are needed

### 4. Description

Holy bond's FPC antenna series are specially designed for WIFI (802.11b/g/n) applications. Based on Holy bond's proprietary design and processes, this FPC antenna has excellent stability and sensitivity to consistently provide high signal reception efficiency.

### 5. Electrical Specifications

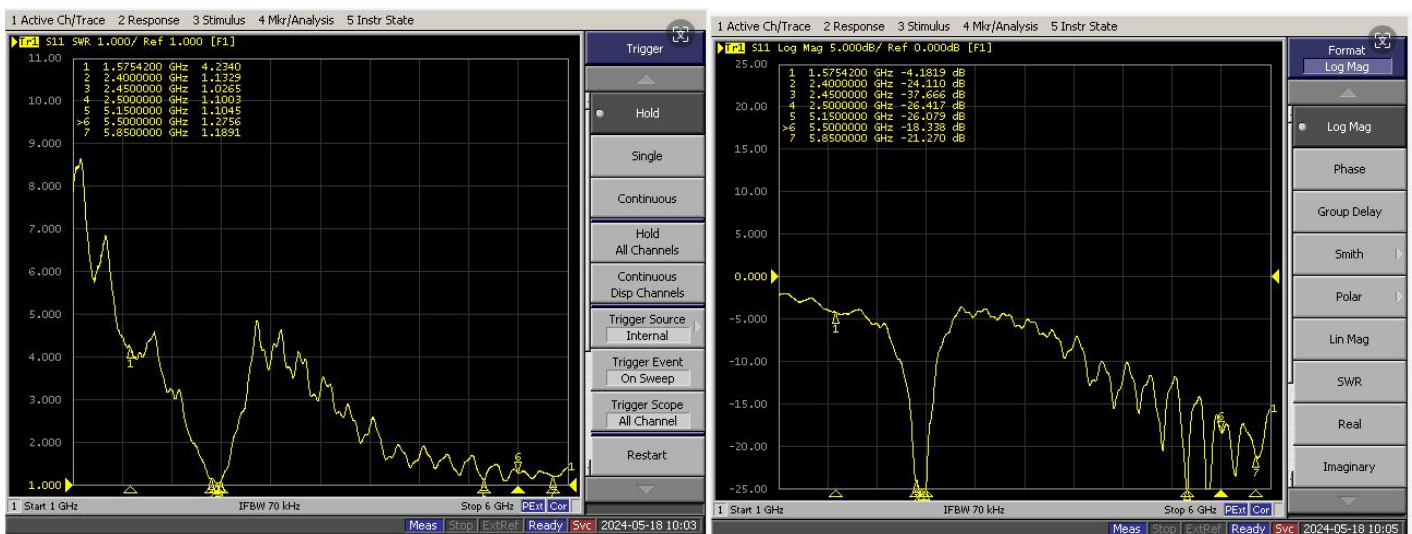
#### 5-1

Characteristics	Specifications	Unit
Outline Dimensions	31.95x22.5x0.12	mm
Center Frequency	2400-2500 5150-5850	MHz
Bandwidth(under-10dB return loss)	130min	MHz
VSWR	5max	

#### 5.2

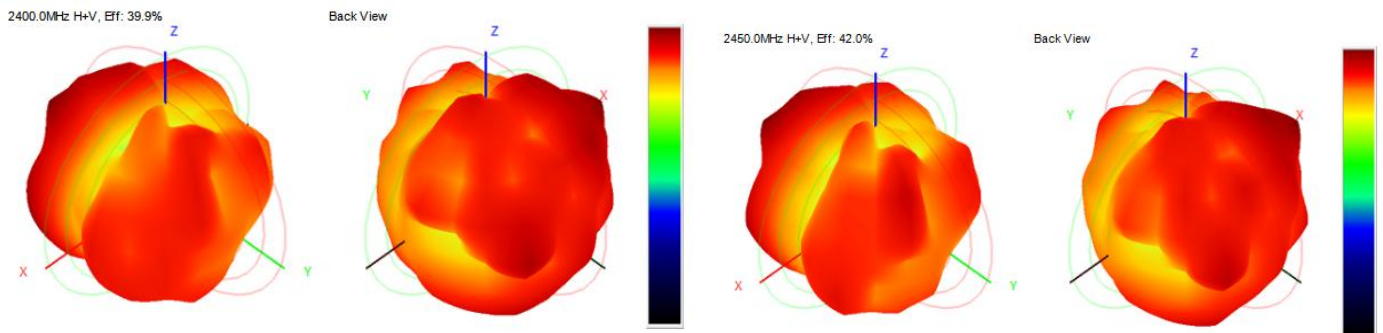
#### VSWR

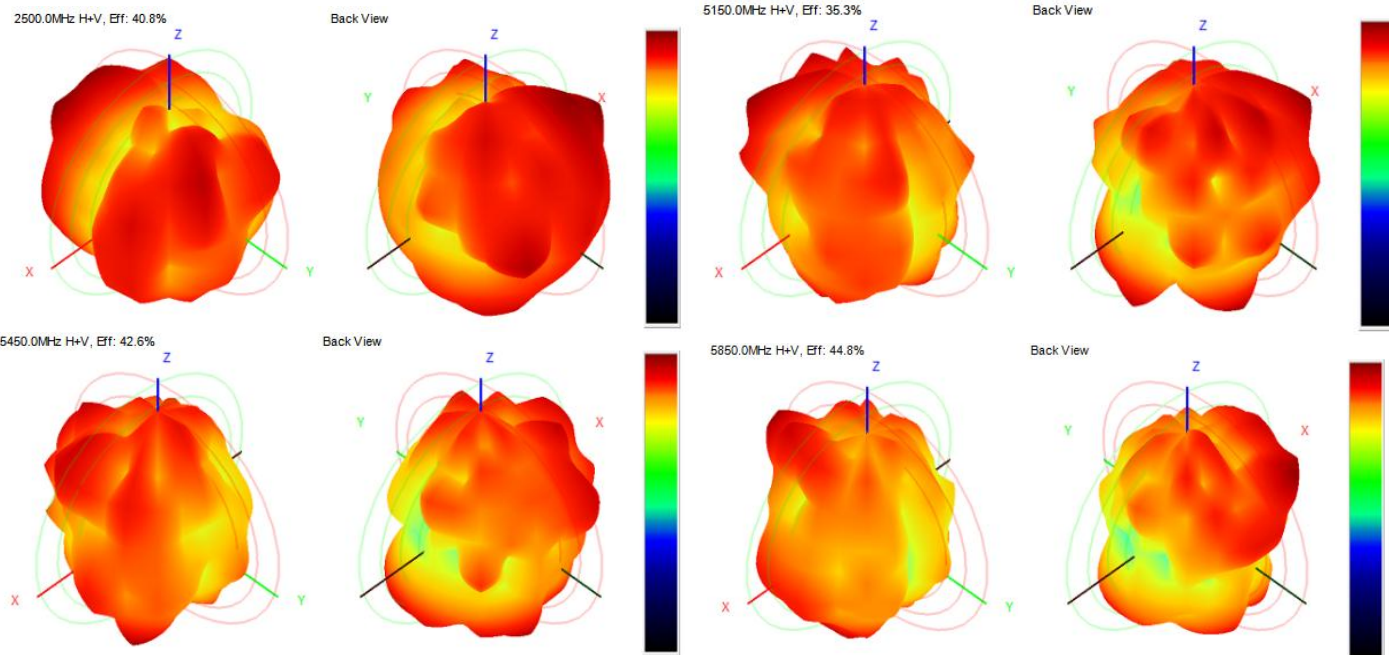
#### S11



### 5-3.WIFI 1 Antenna Gain/Efficiency/Radiation Pattern of 3D

Frequency (MHz)	Efficiency (dBi)	Gain (dBi)	Efficiency (%)
2400	-3.99	1.90	39.91
2410	-3.89	2.38	40.86
2420	-3.64	2.80	43.25
2430	-3.65	2.61	43.19
2440	-3.74	2.54	42.31
2450	-3.77	2.57	41.99
2460	-3.45	2.67	45.18
2470	-3.86	2.45	41.14
2480	-3.87	2.36	40.98
2490	-3.88	2.21	40.94
2500	-3.89	2.19	40.82
5150	-4.53	2.72	35.25
5250	-4.61	2.27	34.56
5350	-4.12	3.33	38.70
5450	-3.71	2.94	42.56
5550	-3.86	2.98	41.12
5650	-3.60	2.17	43.61
5750	-3.76	3.00	42.05
5850	-3.48	2.75	44.83

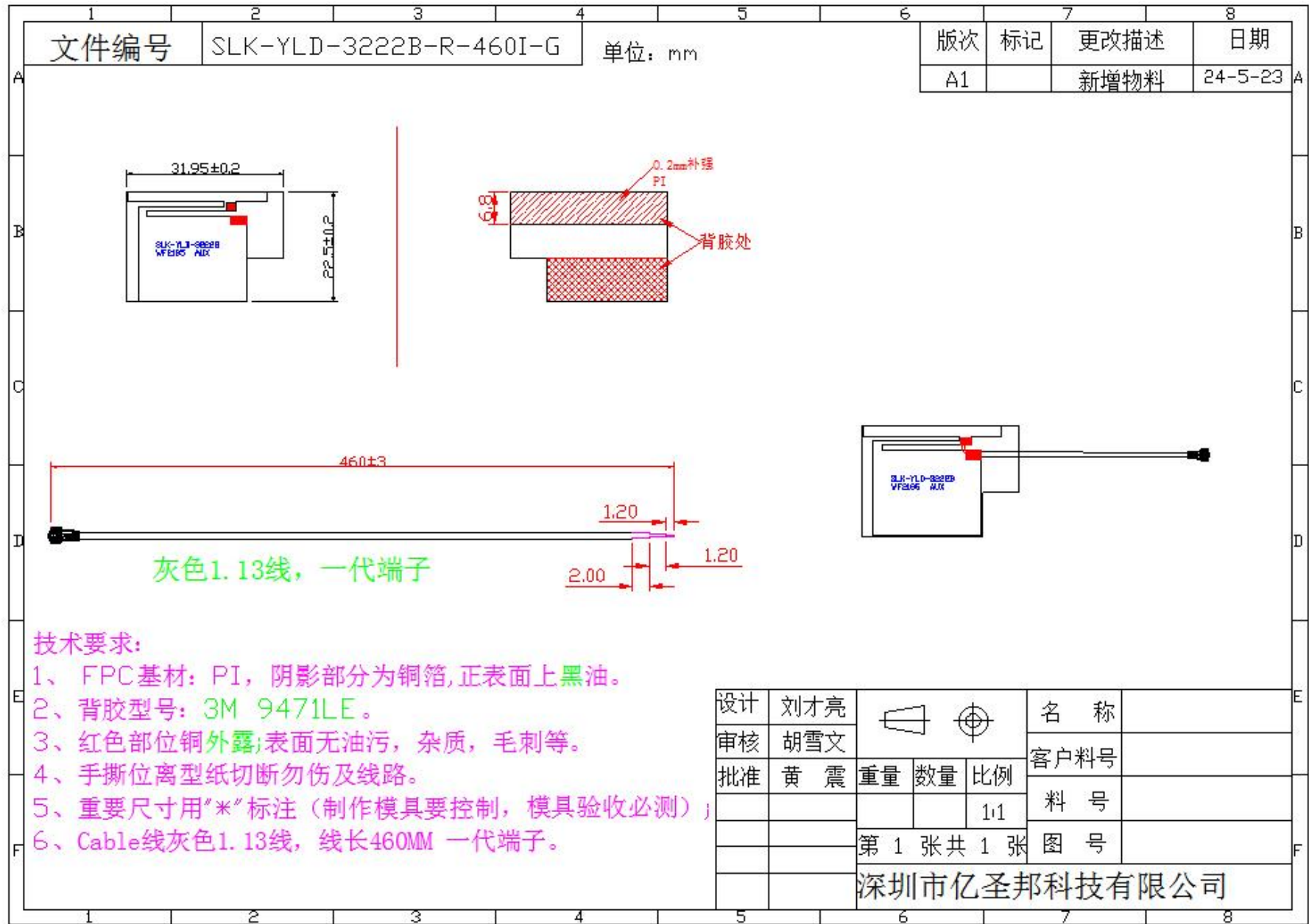




## WIFI 有源测试

频段	1	6	11
B-TRP-11Mbps	12.39	13.58	13.26
B-TIS-11Mbps	-81.47	-82.56	-82.78
G-TRP-54Mbps	10.84	12.53	11.75
G-TIS-54Mbps	-71.59	-72.86	-72.06
N-TRP-MCS7	10.22	11.49	11.16
N-TIS-MCS7	-68.12	-69.28	-69.38
频段	36	149	165
A-TRP-54Mbps	12.23	13.24	12.34
A-TIS-54Mbps	-72.10	-72.93	-72.41

6. Antenna Dimensions (unit: mm)



# 7. Antenna Picture

