

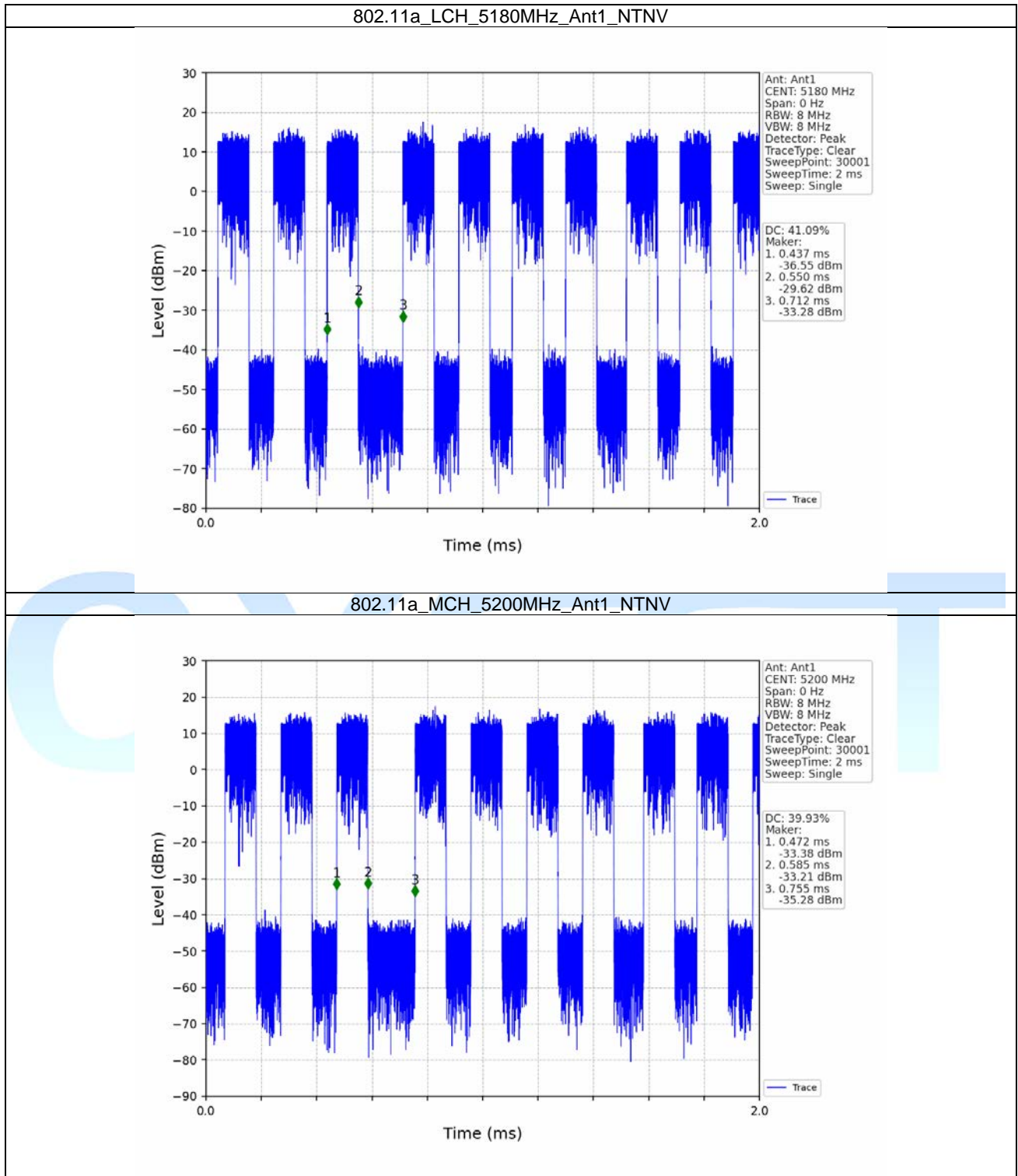
1. Duty Cycle

1.1 Ant1

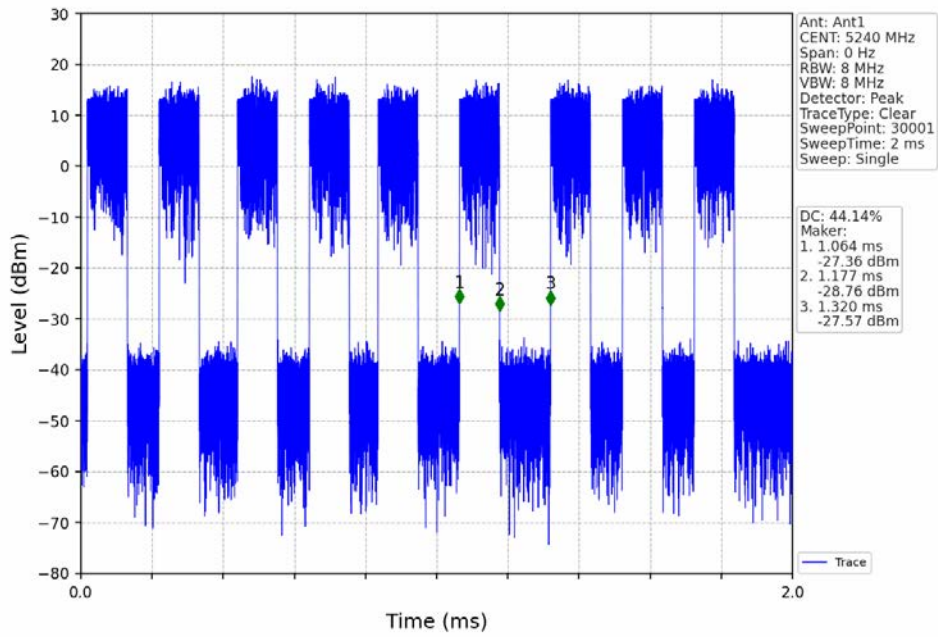
1.1.1 Test Result

Ant1							
Mode	TX Type	Frequency (MHz)	T_on (ms)	Period (ms)	Duty Cycle (%)	Duty Cycle Correction Factor (dB)	Max. DC Variation (%)
802.11a	SISO	5180	0.113	0.275	41.09	3.86	17.33
		5200	0.113	0.283	39.93	3.99	18.65
		5240	0.113	0.256	44.14	3.55	14.30
802.11n (HT20)	SISO	5180	0.112	0.255	43.92	3.57	14.31
		5200	0.112	0.220	50.91	2.93	7.16
		5240	0.113	0.283	39.93	3.99	15.97
802.11n (HT40)	SISO	5190	0.076	0.243	31.28	5.05	18.22
		5230	0.075	0.243	30.86	5.11	18.36
802.11ac (VHT20)	SISO	5180	0.121	0.290	41.72	3.80	18.67
		5200	0.120	0.317	37.85	4.22	22.10
		5240	0.122	0.254	48.03	3.18	13.04
802.11ac (VHT40)	SISO	5190	0.080	0.241	33.20	4.79	16.93
		5230	0.081	0.295	27.46	5.61	23.10
802.11ac (VHT80)	SISO	5210	0.058	0.246	23.58	6.28	18.52

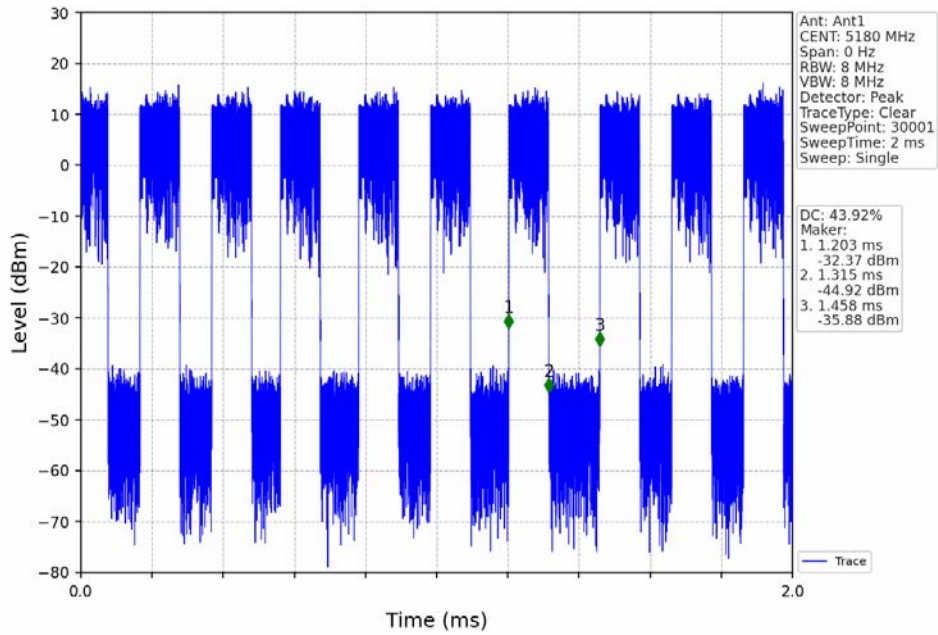
1.1.2 Test Graph



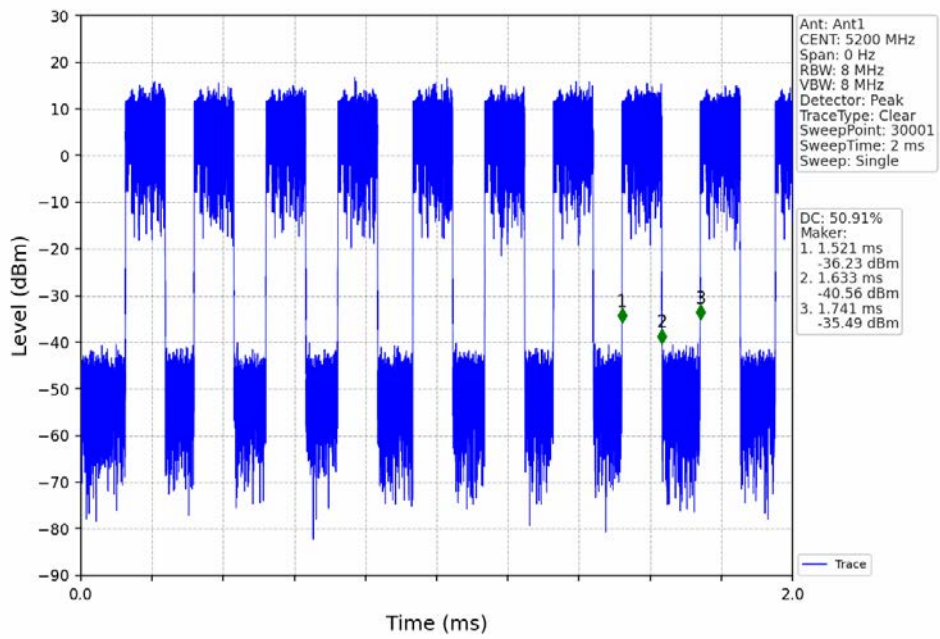
802.11a_HCH_5240MHz_Ant1_NTNV



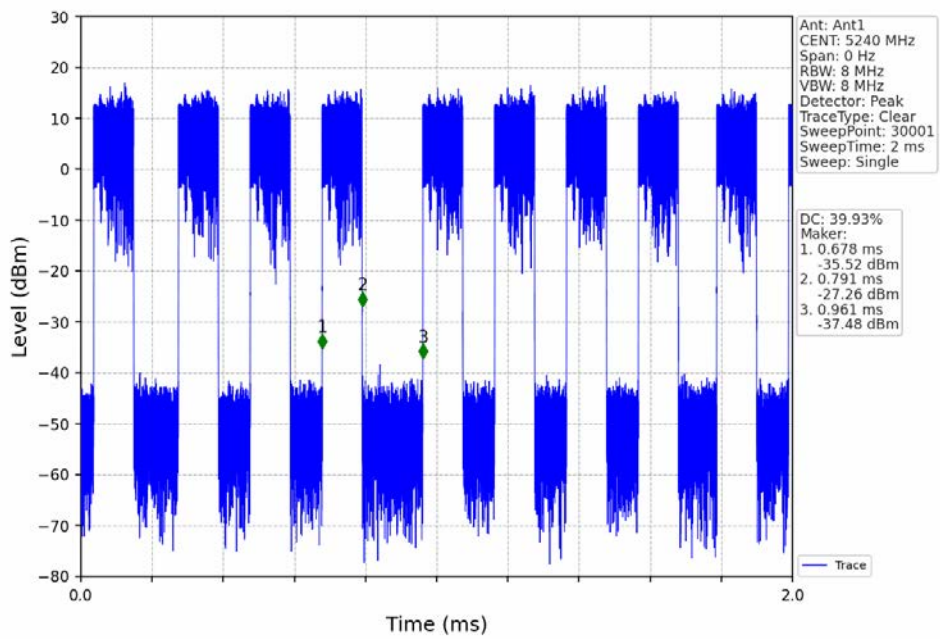
802.11n(HT20)_LCH_5180MHz_Ant1_NTNV



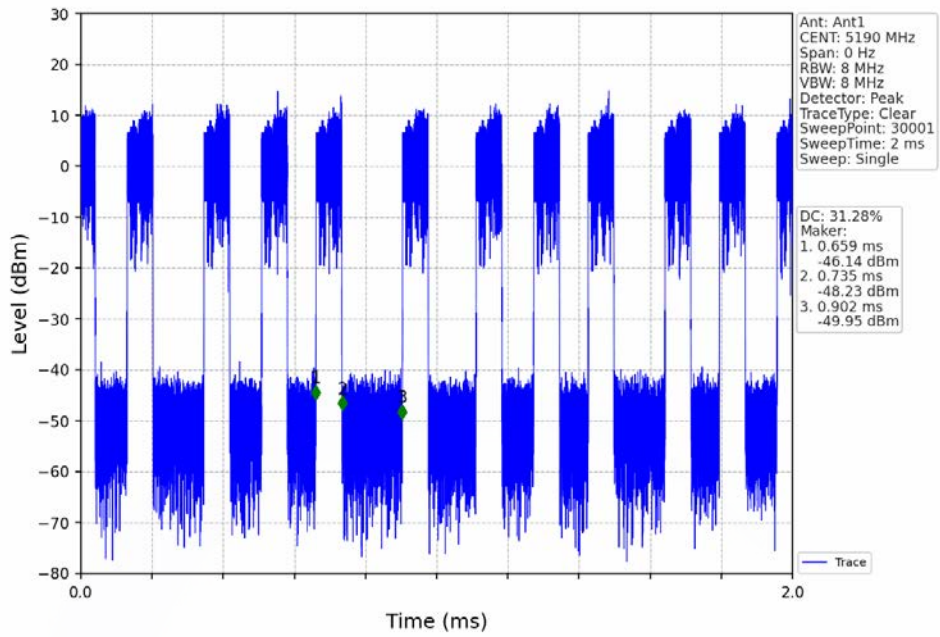
802.11n(HT20)_MCH_5200MHz_Ant1_NTNV



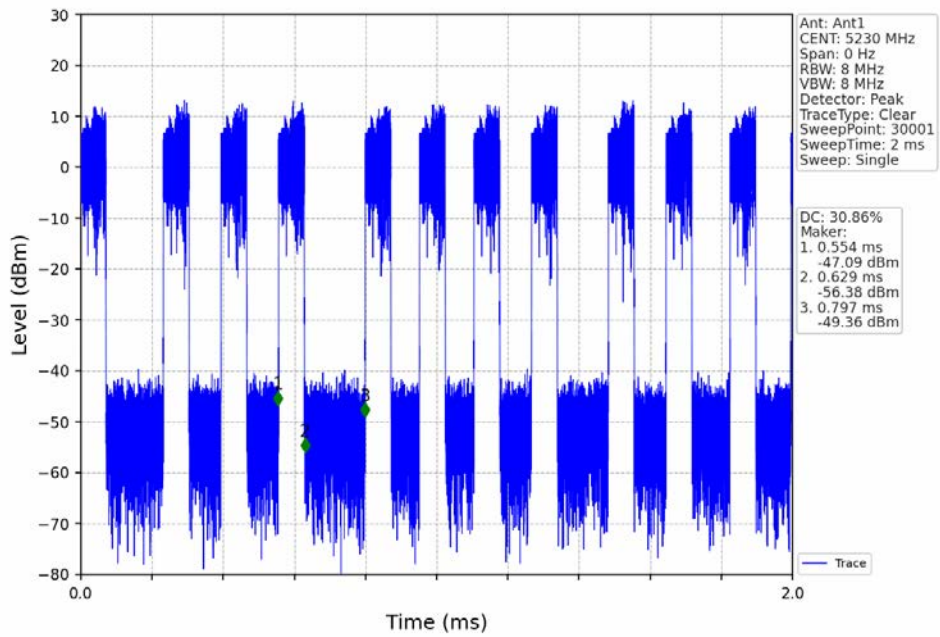
802.11n(HT20)_HCH_5240MHz_Ant1_NTNV



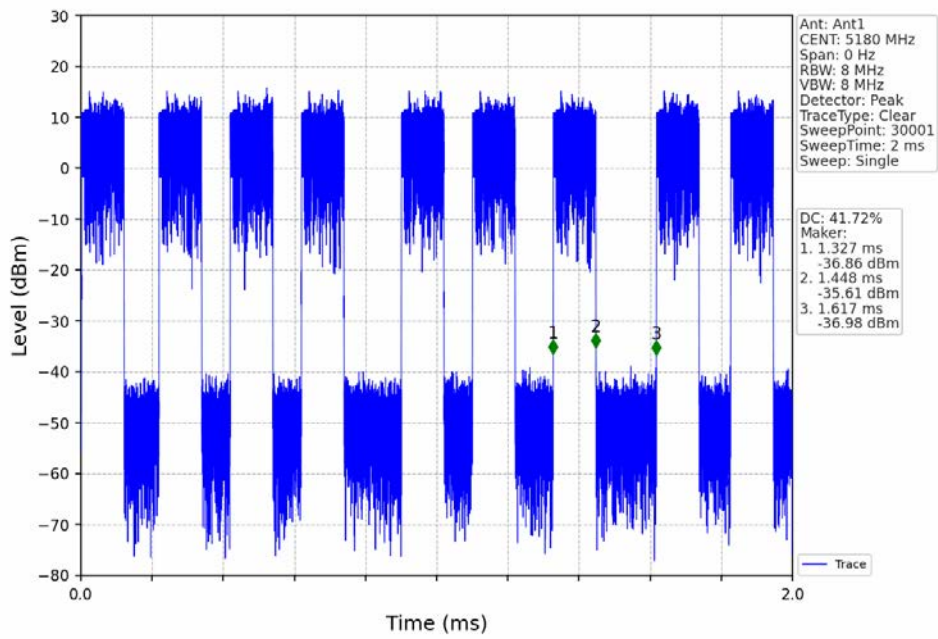
802.11n(HT40)_LCH_5190MHz_Ant1_NTNV



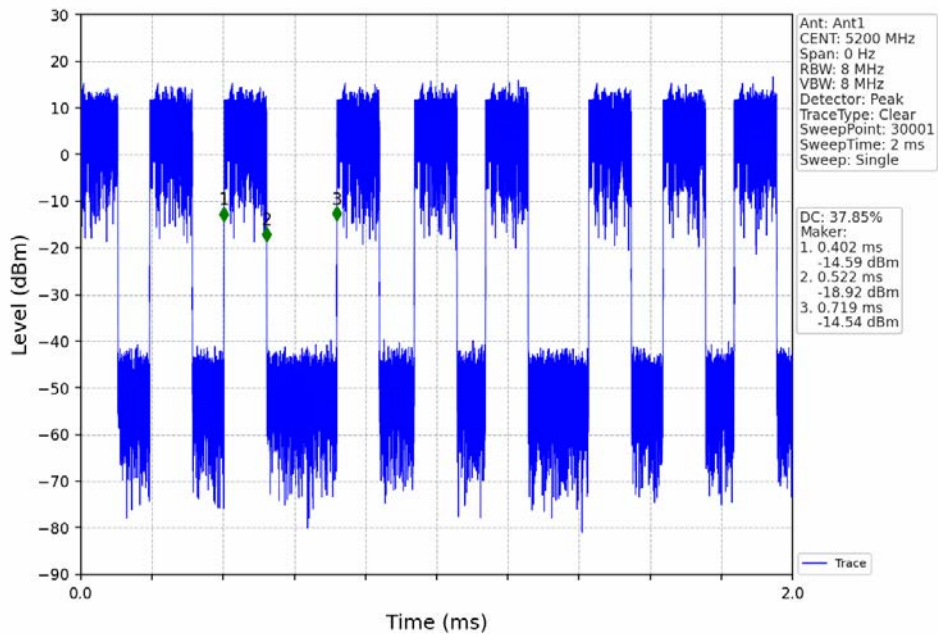
802.11n(HT40)_HCH_5230MHz_Ant1_NTNV



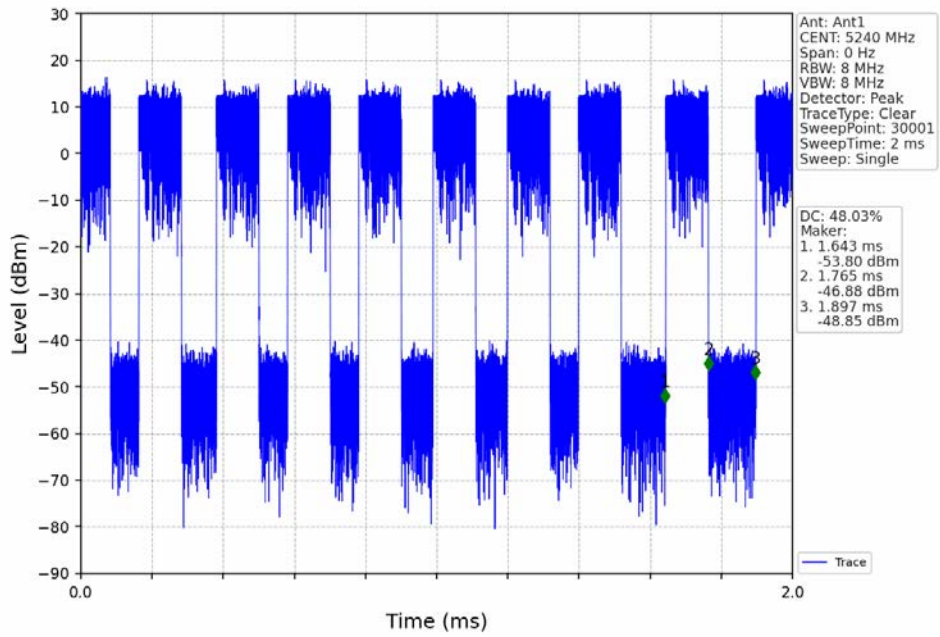
802.11ac(VHT20)_LCH_5180MHz_Ant1_NTNV



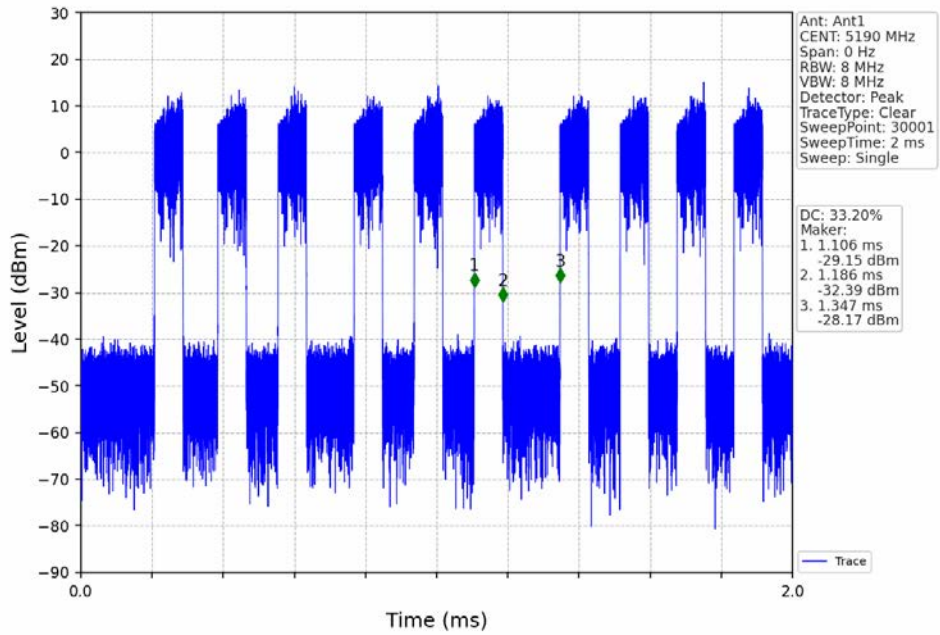
802.11ac(VHT20)_MCH_5200MHz_Ant1_NTNV



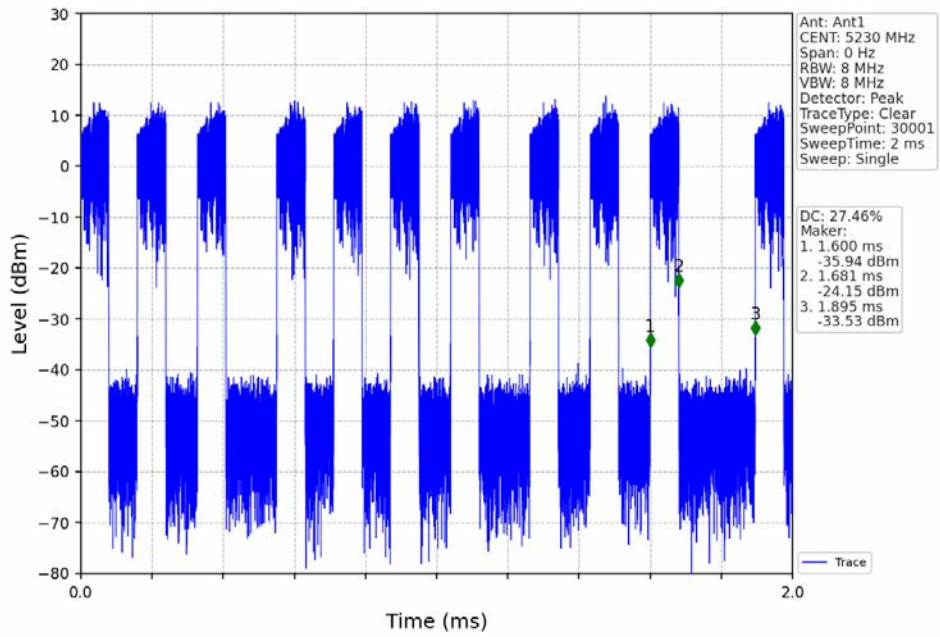
802.11ac(VHT20)_HCH_5240MHz_Ant1_NTNV



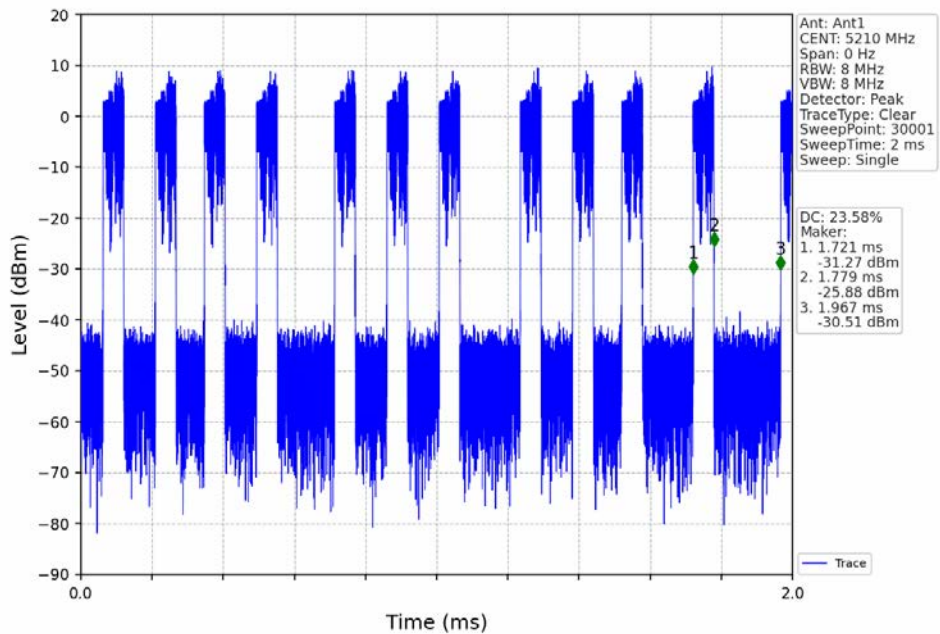
802.11ac(VHT40)_LCH_5190MHz_Ant1_NTNV



802.11ac(VHT40)_HCH_5230MHz_Ant1_NTNV



802.11ac(VHT80)_MCH_5210MHz_Ant1_NTNV



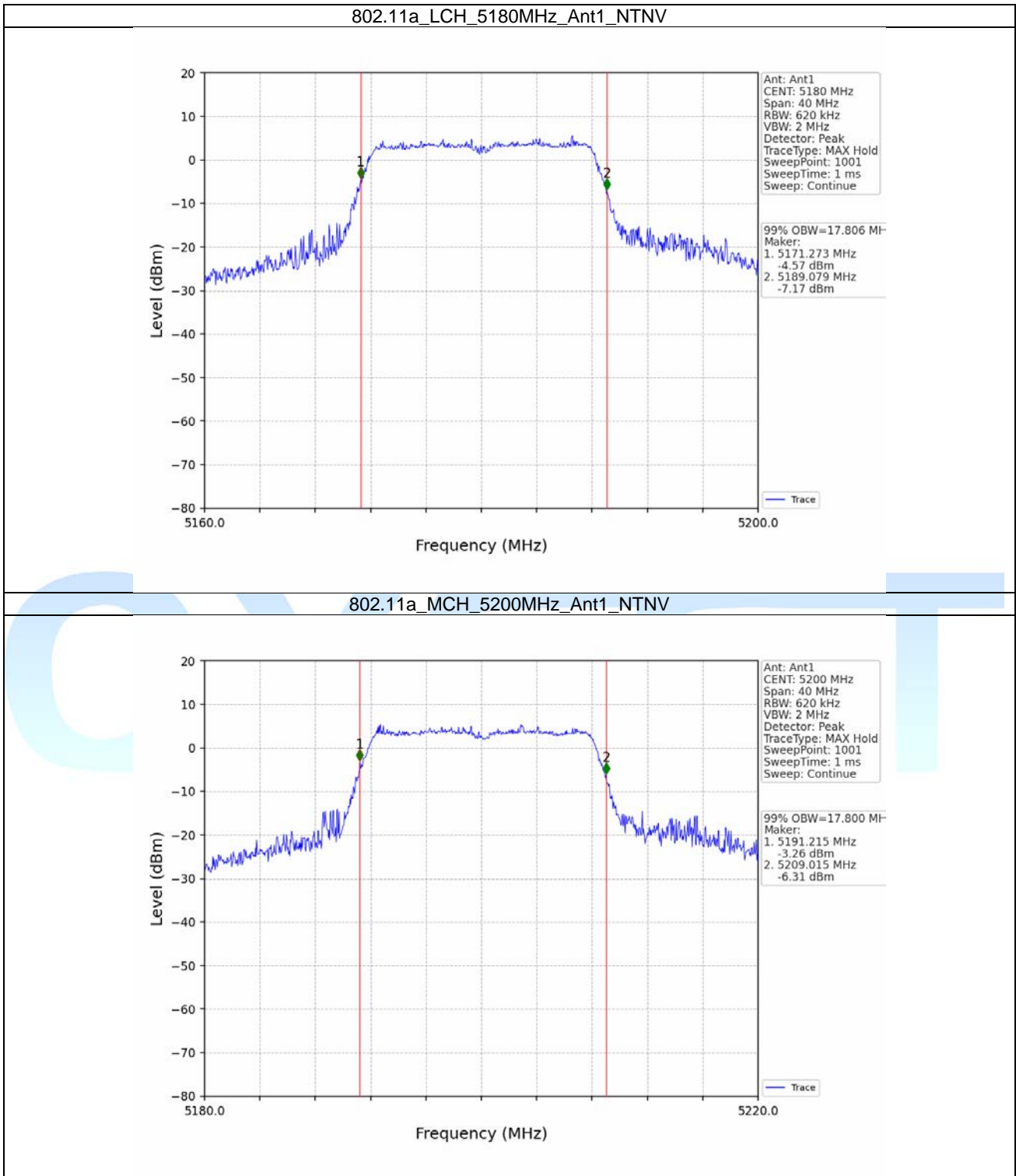
2. Bandwidth

2.1 OBW

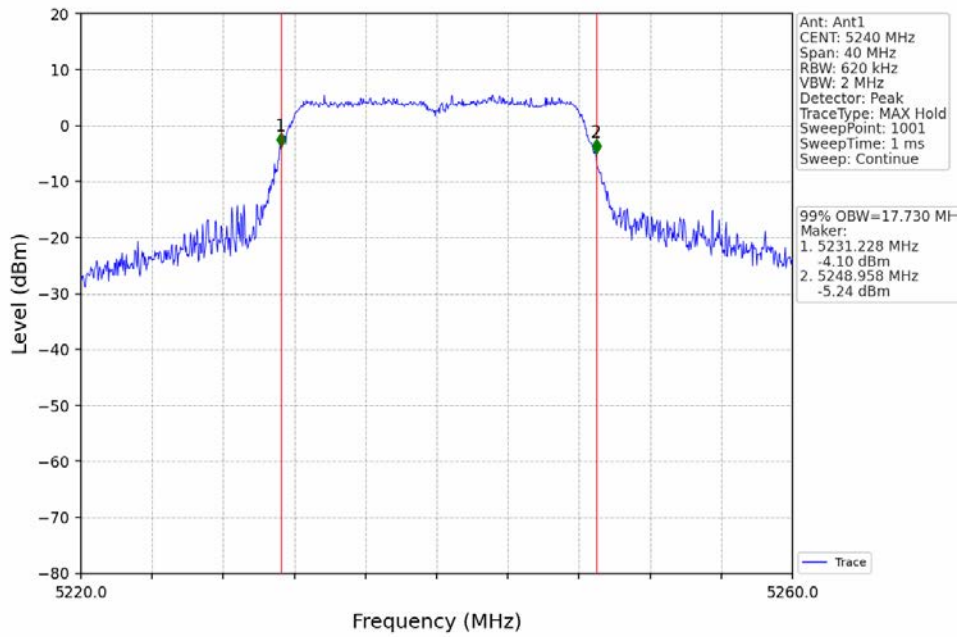
2.1.1 Test Result

Mode	TX Type	Frequency (MHz)	ANT	99% Occupied Bandwidth (MHz)		Verdict
				Result	Limit	
802.11a	SISO	5180	1	17.806	/	Pass
		5200	1	17.800	/	Pass
		5240	1	17.730	/	Pass
802.11n (HT20)	SISO	5180	1	18.480	/	Pass
		5200	1	18.497	/	Pass
		5240	1	18.458	/	Pass
802.11n (HT40)	SISO	5190	1	36.622	/	Pass
		5230	1	36.688	/	Pass
802.11ac (VHT20)	SISO	5180	1	18.183	/	Pass
		5200	1	18.125	/	Pass
		5240	1	18.120	/	Pass
802.11ac (VHT40)	SISO	5190	1	36.584	/	Pass
		5230	1	36.618	/	Pass
802.11ac (VHT80)	SISO	5210	1	76.401	/	Pass

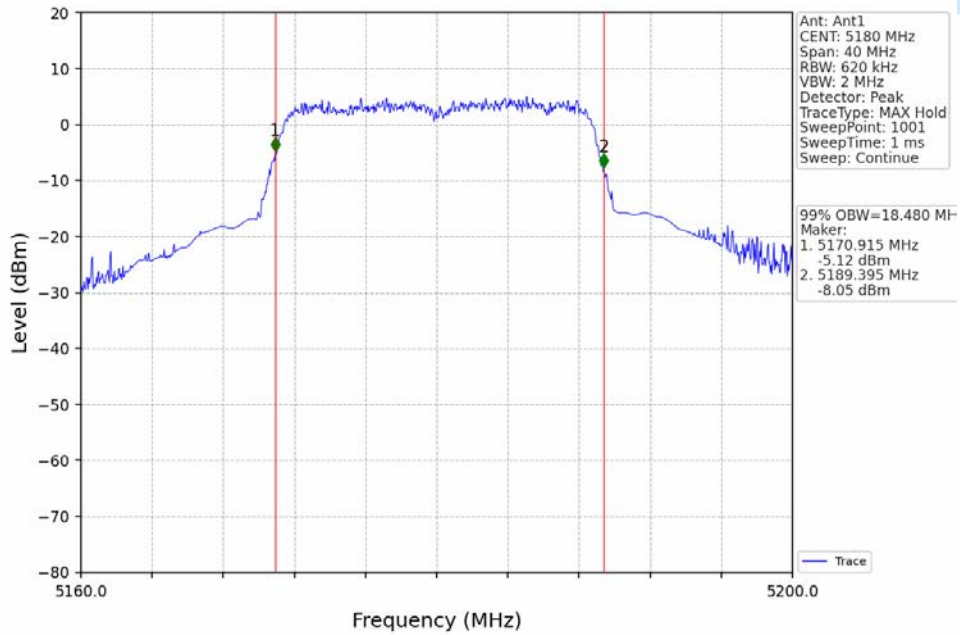
2.1.2 Test Graph



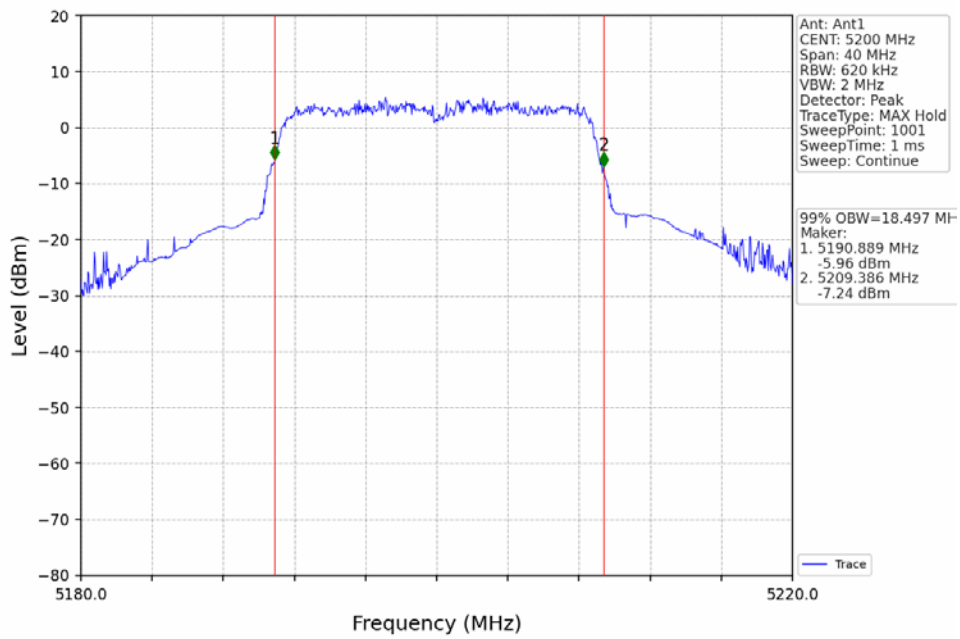
802.11a_HCH_5240MHz_Ant1_NTNV



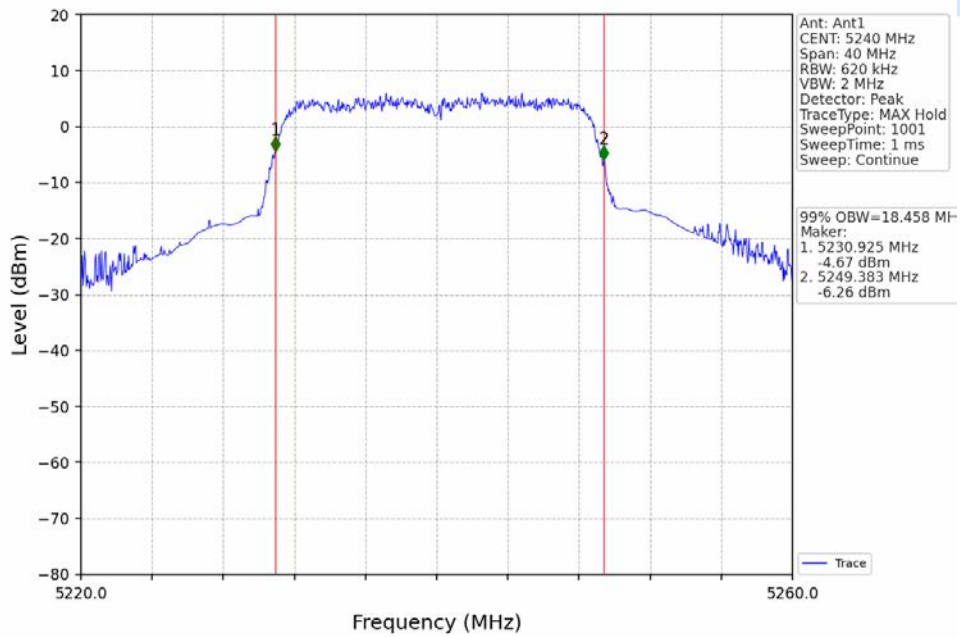
802.11n(HT20)_LCH_5180MHz_Ant1_NTNV



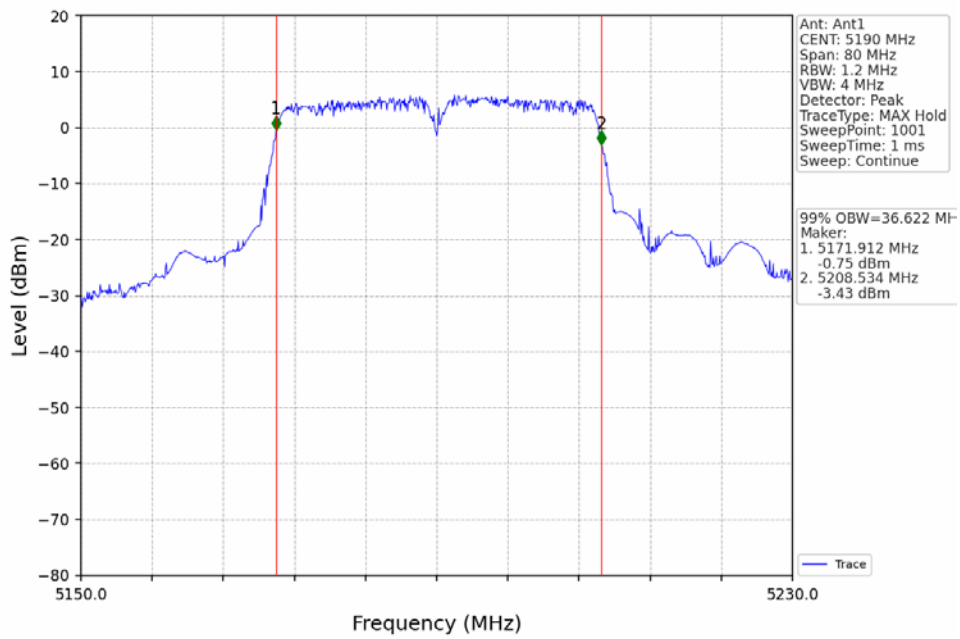
802.11n(HT20)_MCH_5200MHz_Ant1_NTNV



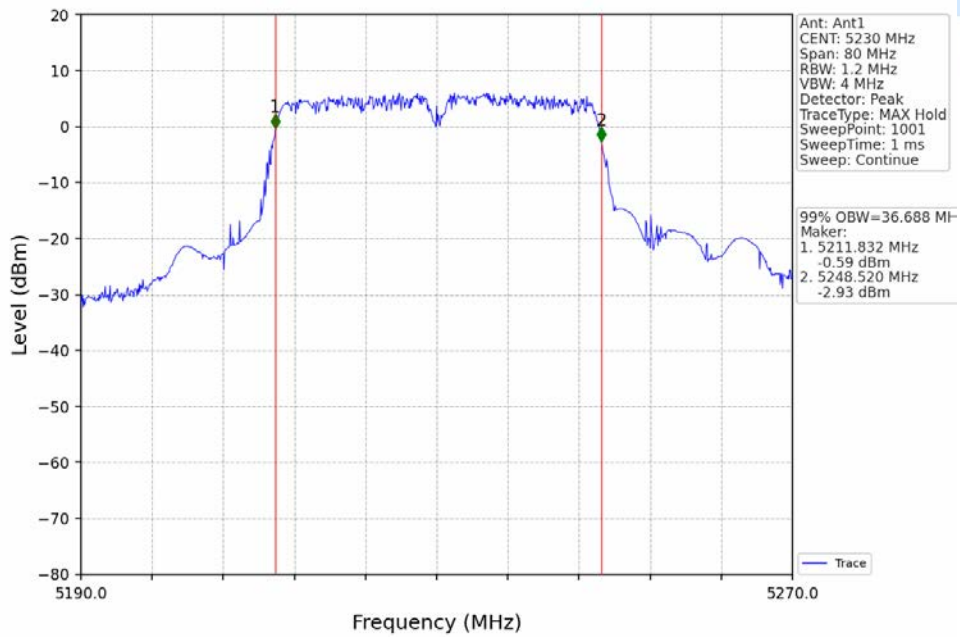
802.11n(HT20)_HCH_5240MHz_Ant1_NTNV



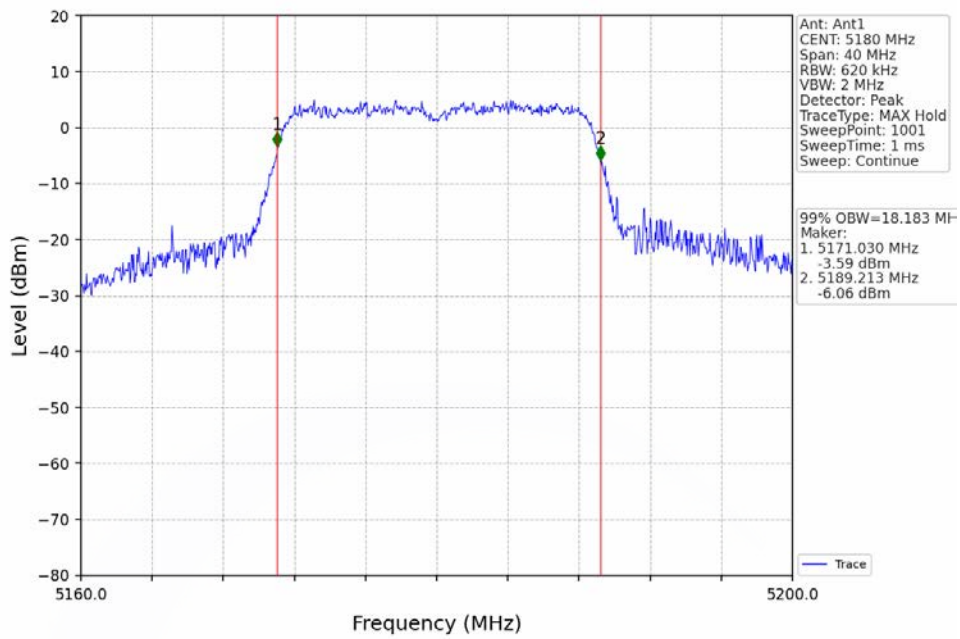
802.11n(HT40)_LCH_5190MHz_Ant1_NTNV



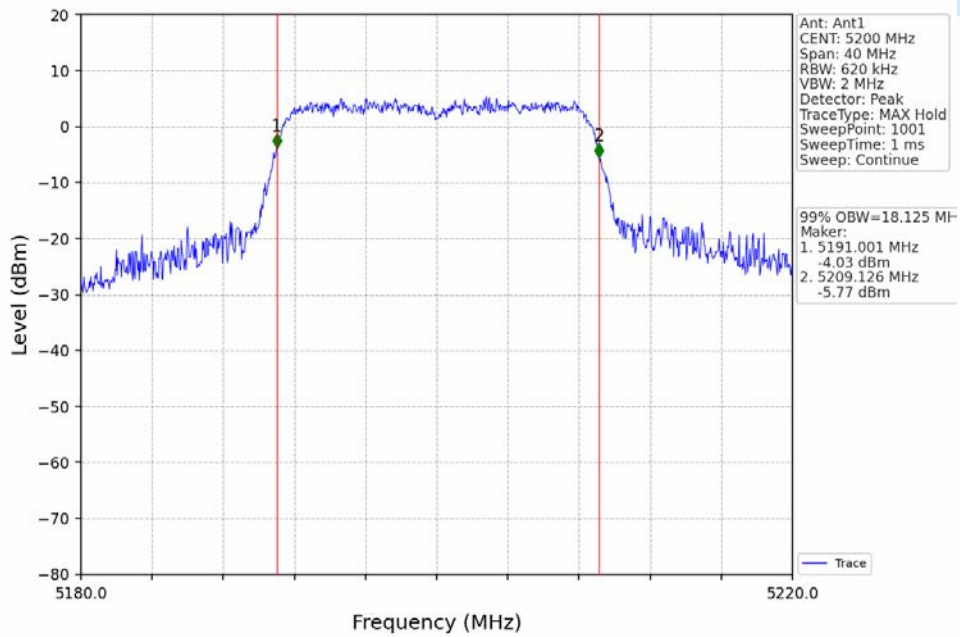
802.11n(HT40)_HCH_5230MHz_Ant1_NTNV



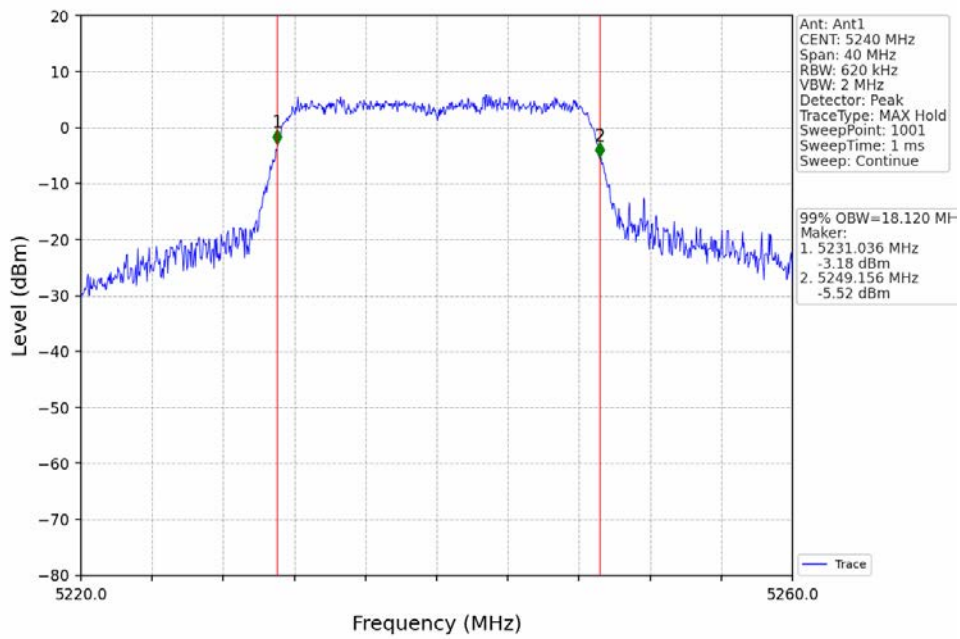
802.11ac(VHT20)_LCH_5180MHz_Ant1_NTNV



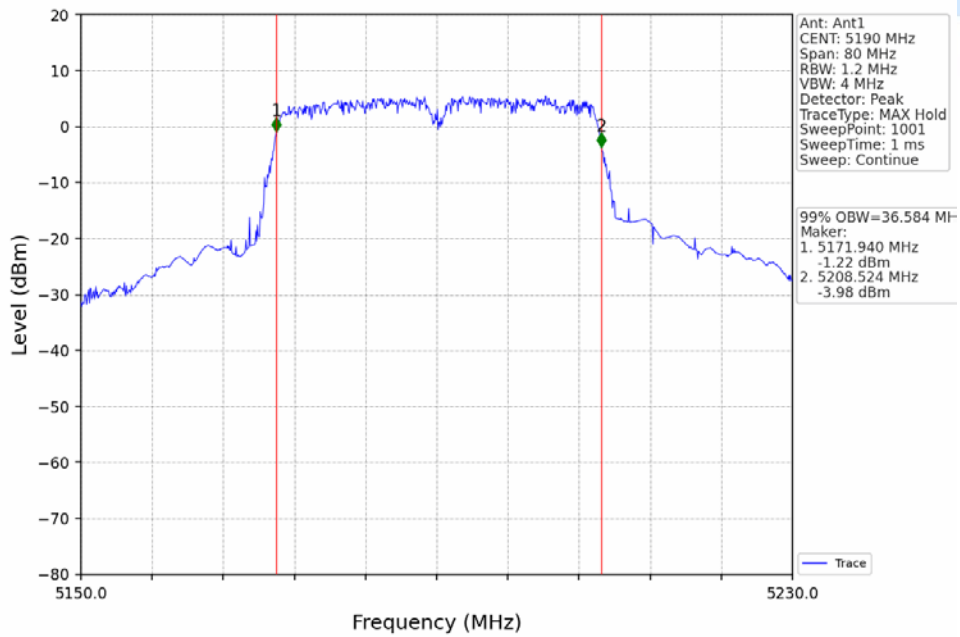
802.11ac(VHT20)_MCH_5200MHz_Ant1_NTNV



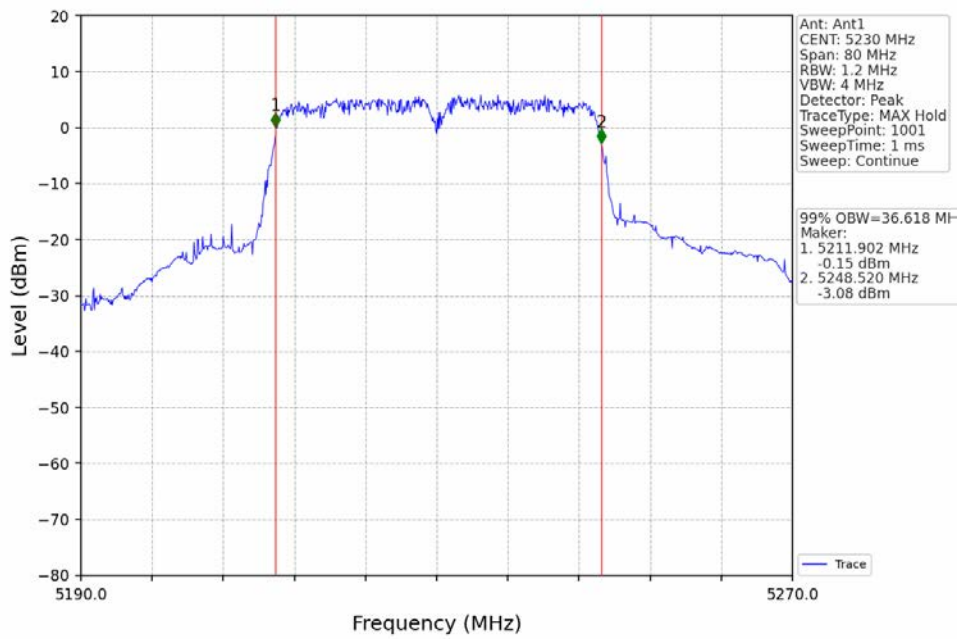
802.11ac(VHT20)_HCH_5240MHz_Ant1_NTNV



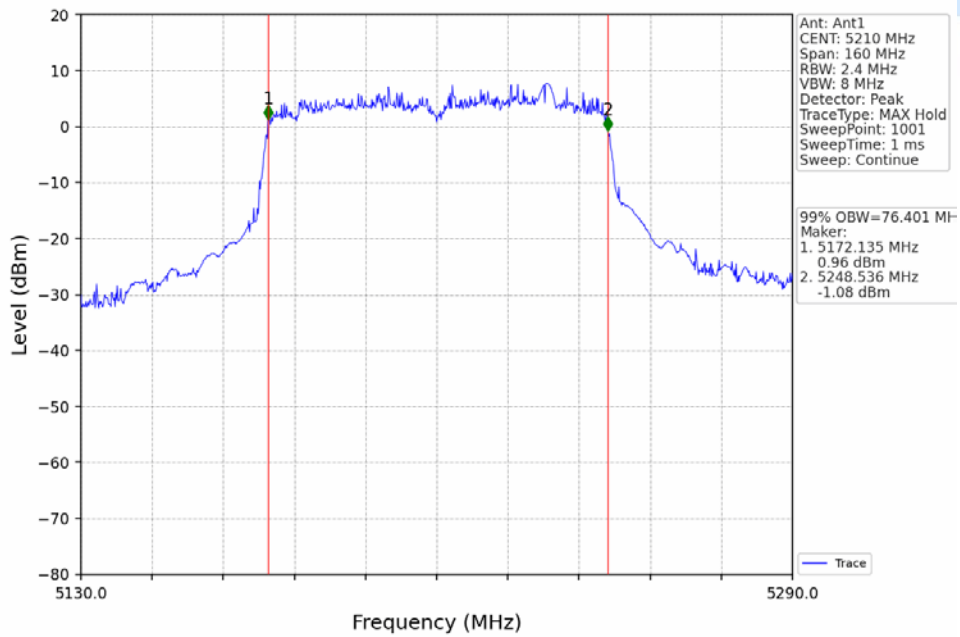
802.11ac(VHT40)_LCH_5190MHz_Ant1_NTNV



802.11ac(VHT40)_HCH_5230MHz_Ant1_NTNV



802.11ac(VHT80)_MCH_5210MHz_Ant1_NTNV

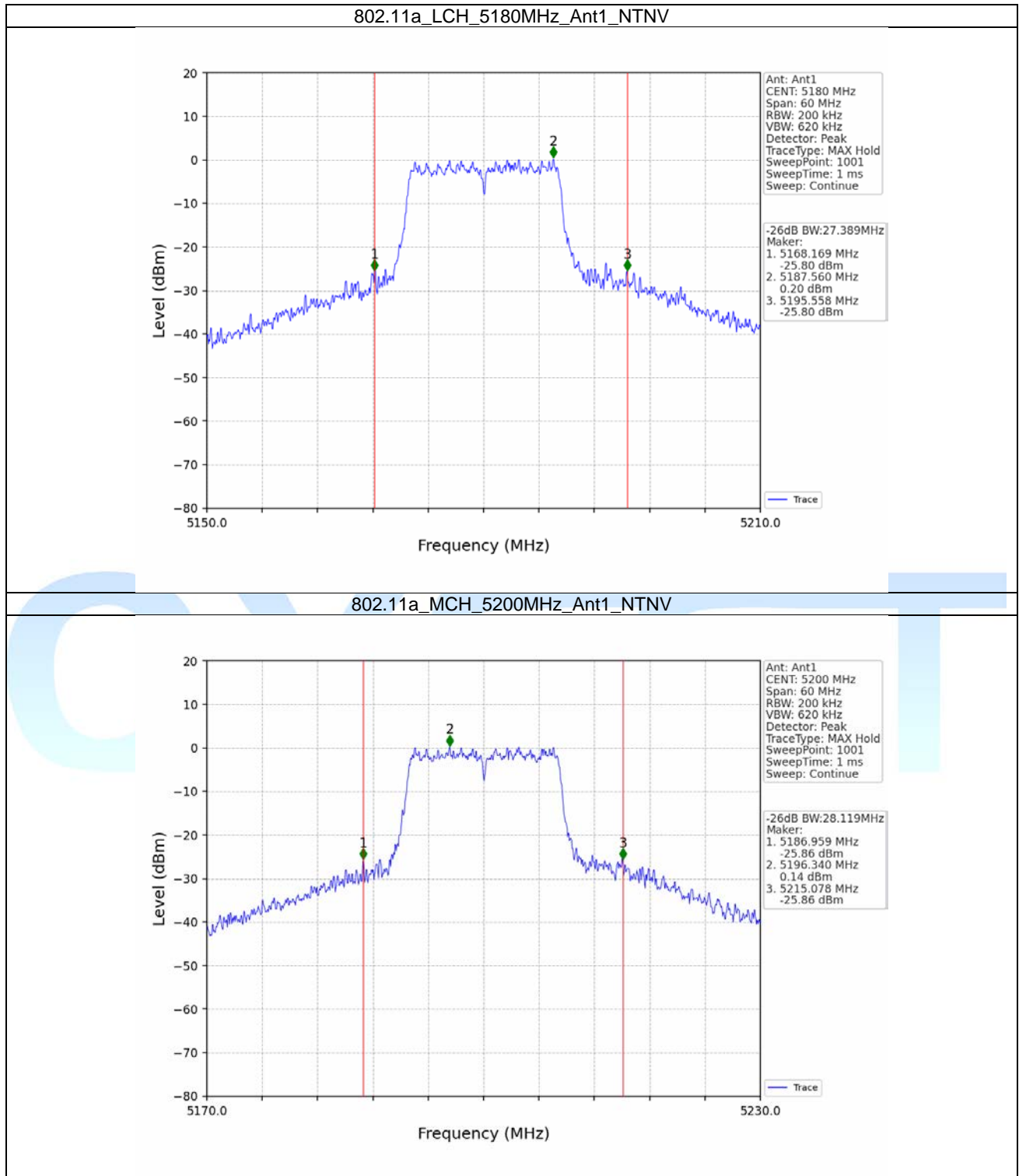


2.2 26dB BW

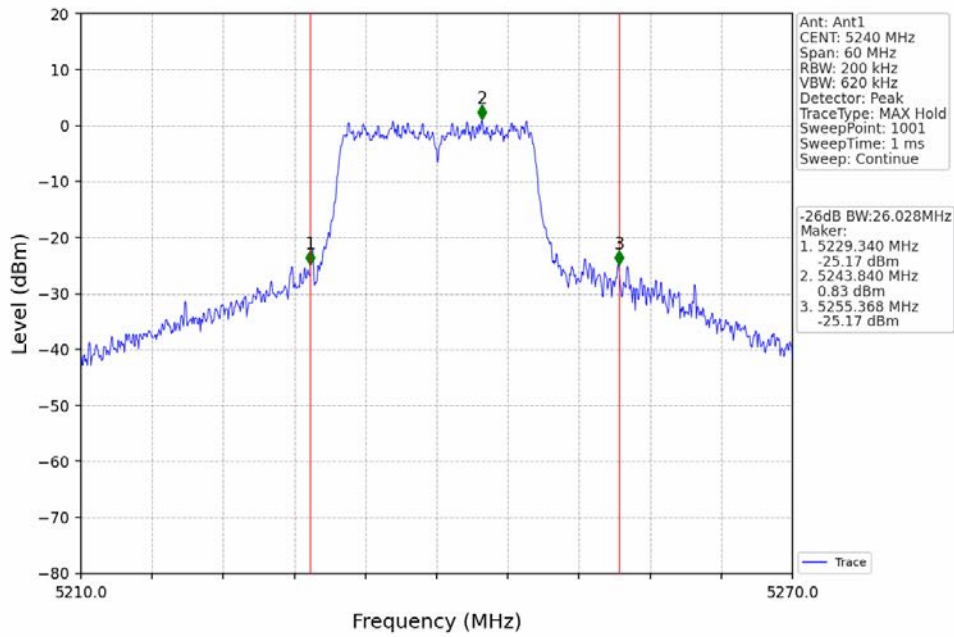
2.2.1 Test Result

Mode	TX Type	Frequency (MHz)	ANT	26dB Bandwidth (MHz)		Verdict
				Result	Limit	
802.11a	SISO	5180	1	27.389	/	Pass
		5200	1	28.119	/	Pass
		5240	1	26.028	/	Pass
802.11n (HT20)	SISO	5180	1	25.315	/	Pass
		5200	1	26.420	/	Pass
		5240	1	25.513	/	Pass
802.11n (HT40)	SISO	5190	1	44.843	/	Pass
		5230	1	49.207	/	Pass
802.11ac (VHT20)	SISO	5180	1	24.152	/	Pass
		5200	1	22.454	/	Pass
		5240	1	24.383	/	Pass
802.11ac (VHT40)	SISO	5190	1	43.459	/	Pass
		5230	1	45.976	/	Pass
802.11ac (VHT80)	SISO	5210	1	93.803	/	Pass

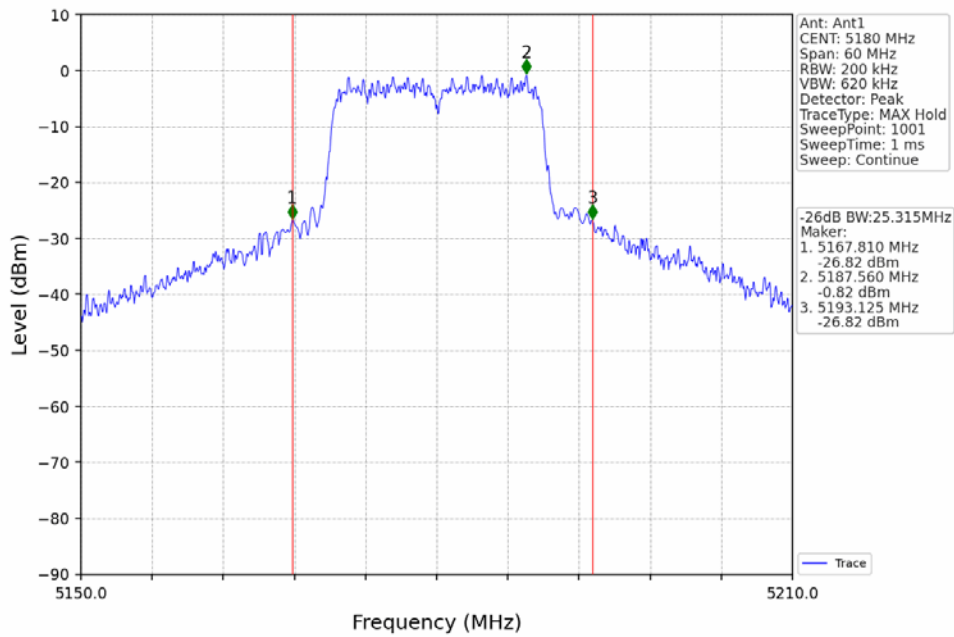
2.2.2 Test Graph



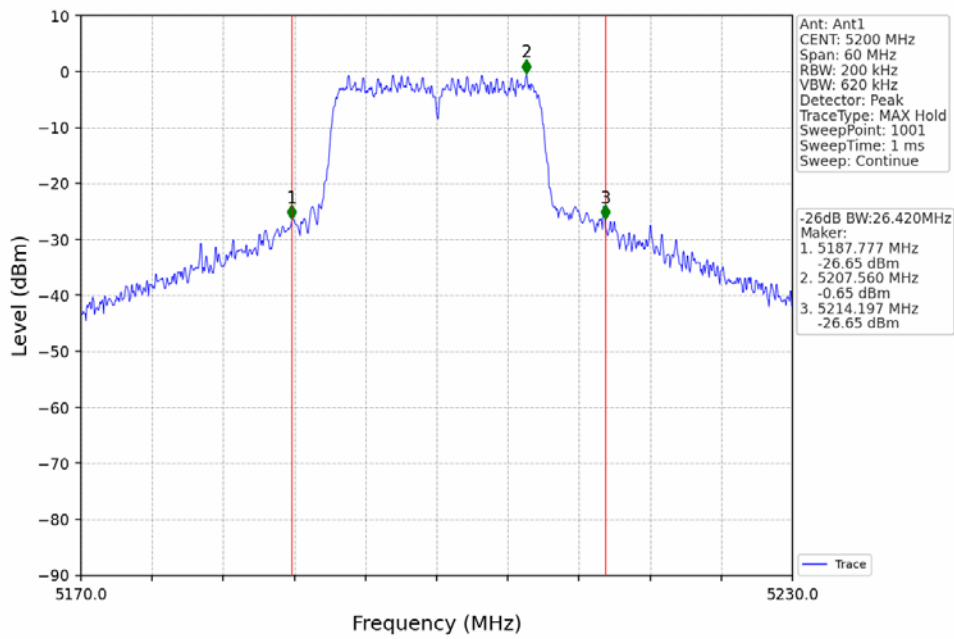
802.11a_HCH_5240MHz_Ant1_NTNV



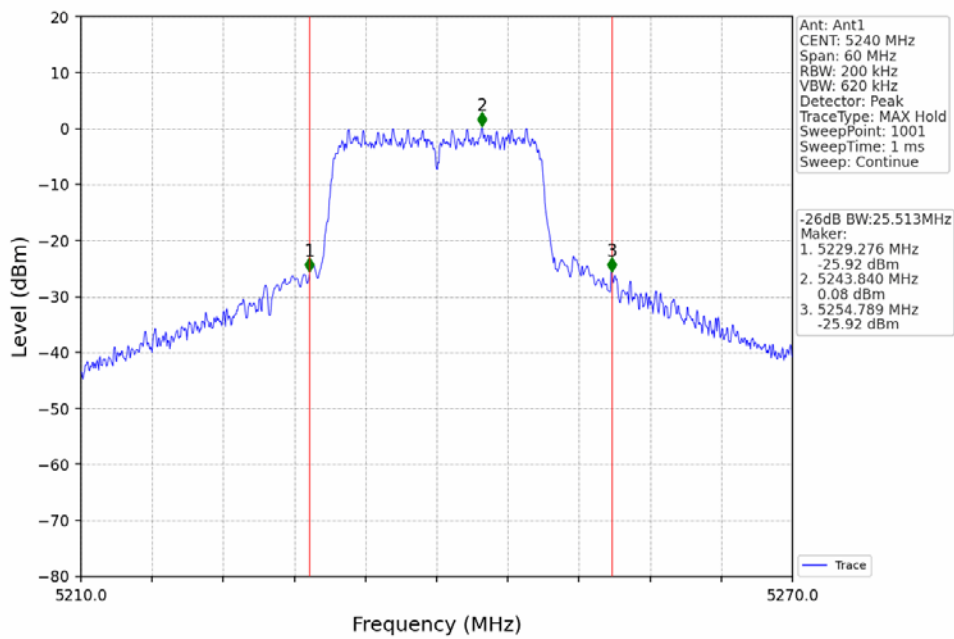
802.11n(HT20)_LCH_5180MHz_Ant1_NTNV



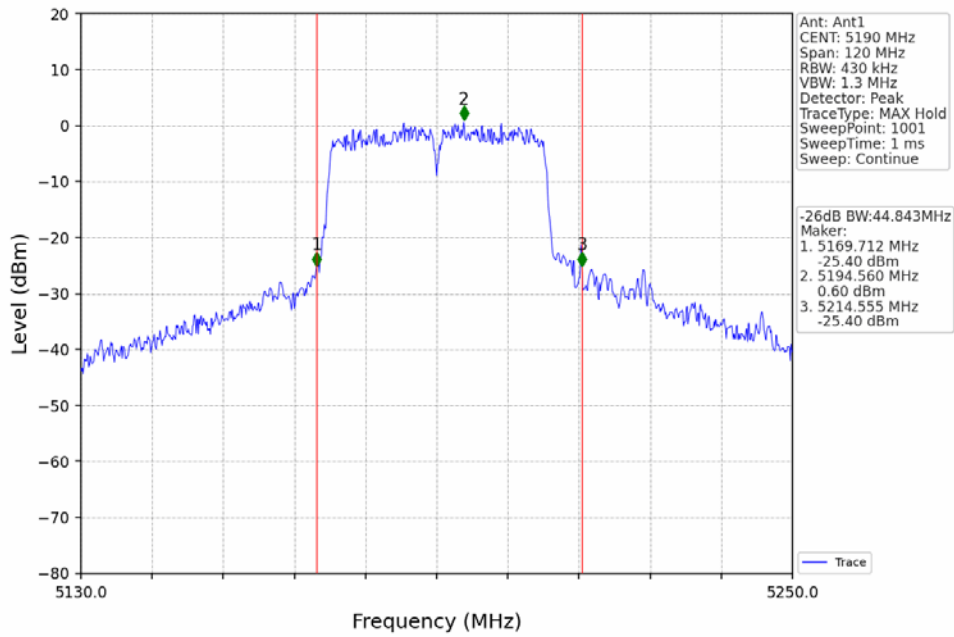
802.11n(HT20)_MCH_5200MHz_Ant1_NTNV



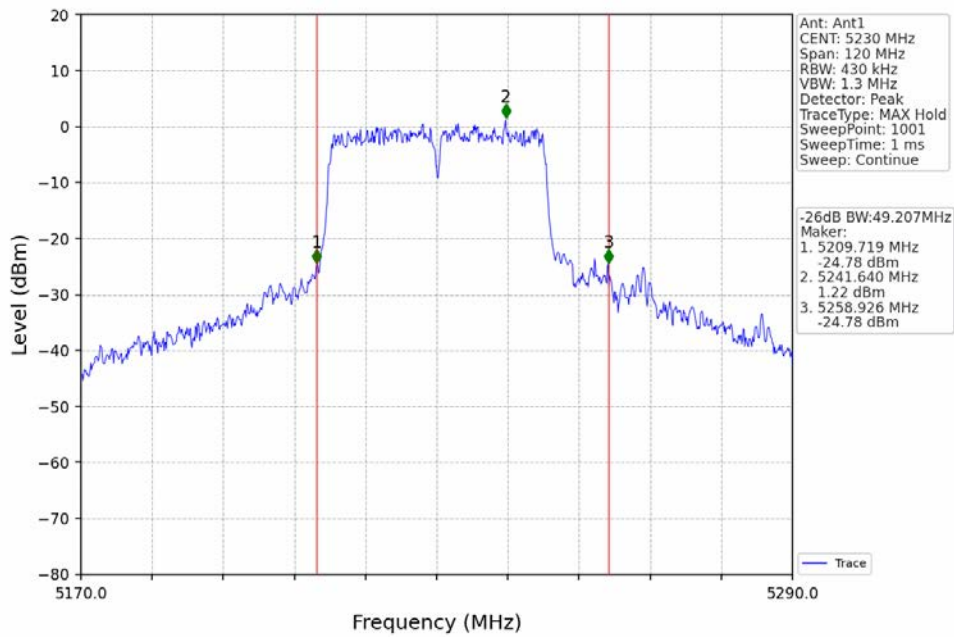
802.11n(HT20)_HCH_5240MHz_Ant1_NTNV



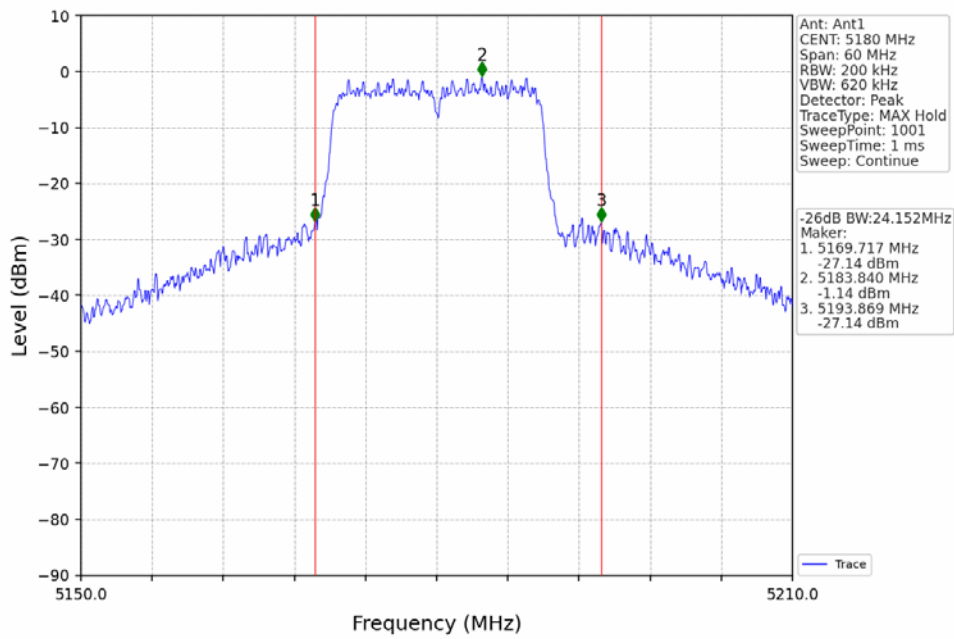
802.11n(HT40)_LCH_5190MHz_Ant1_NTNV



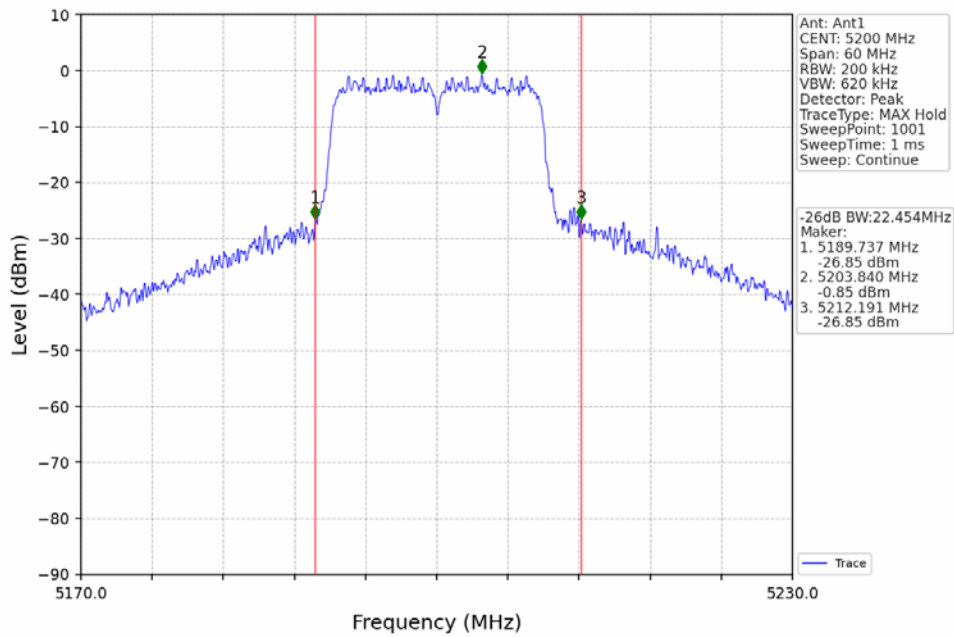
802.11n(HT40)_HCH_5230MHz_Ant1_NTNV



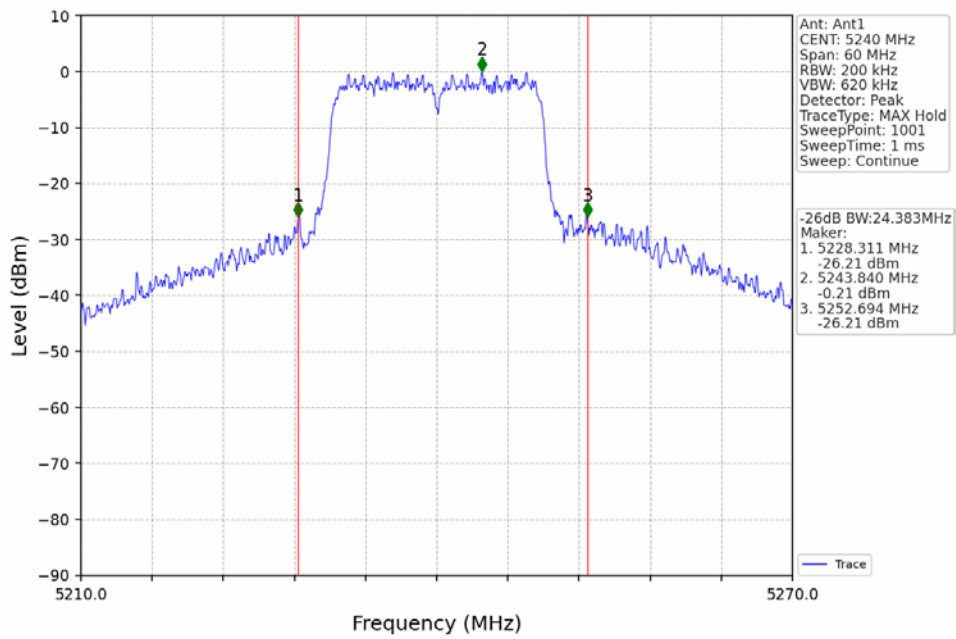
802.11ac(VHT20)_LCH_5180MHz_Ant1_NTNV



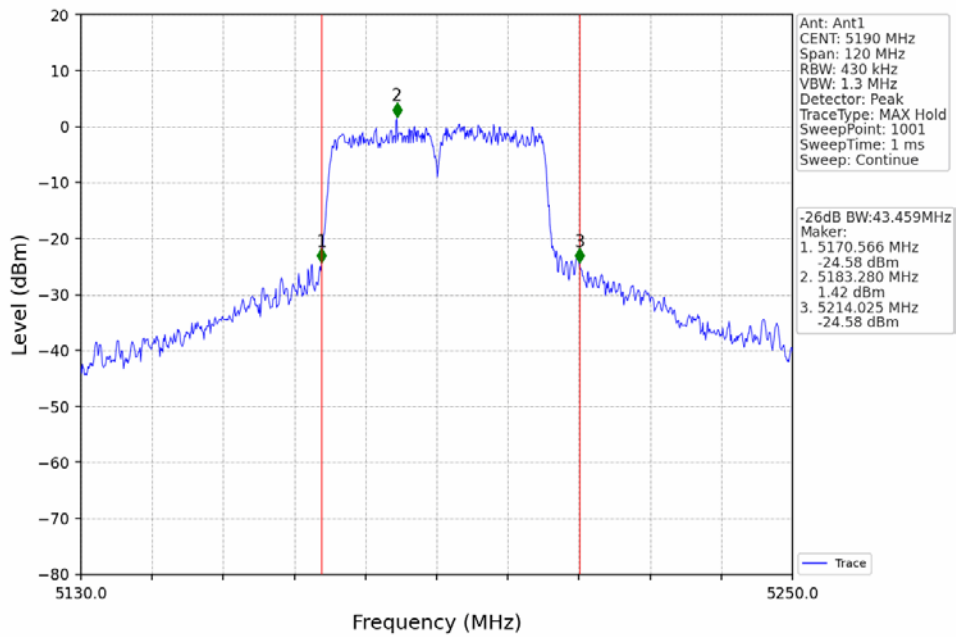
802.11ac(VHT20)_MCH_5200MHz_Ant1_NTNV



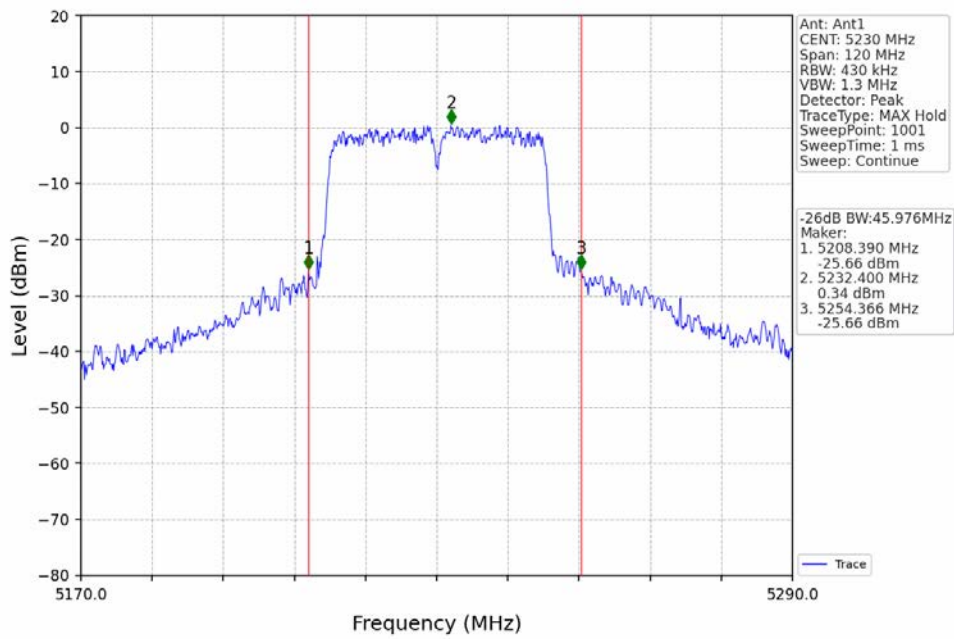
802.11ac(VHT20)_HCH_5240MHz_Ant1_NTNV



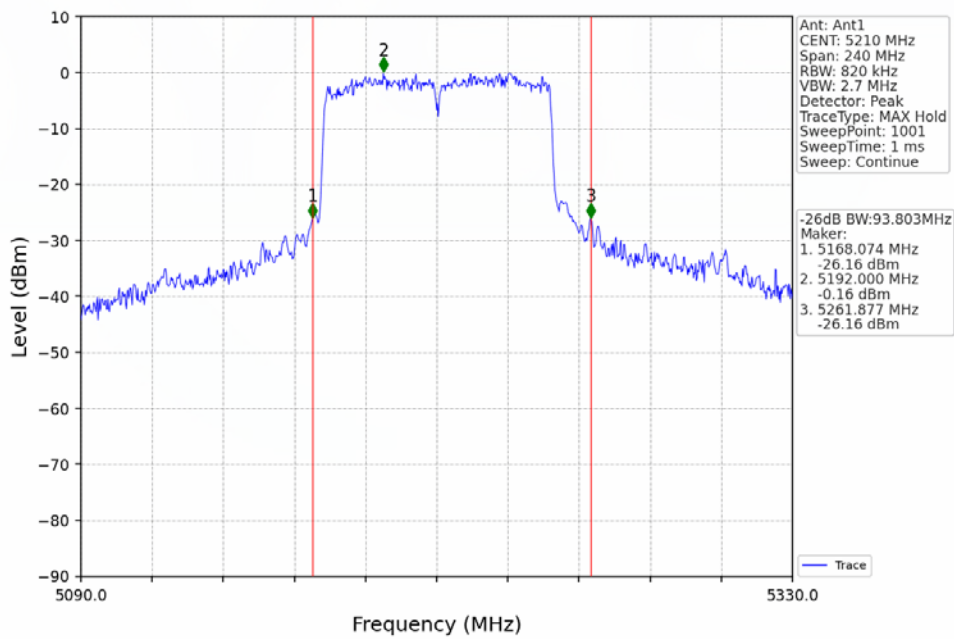
802.11ac(VHT40)_LCH_5190MHz_Ant1_NTNV



802.11ac(VHT40)_HCH_5230MHz_Ant1_NTNV



802.11ac(VHT80)_MCH_5210MHz_Ant1_NTNV



3. Maximum Conducted Output Power

3.1 Power

3.1.1 Test Result

Mode	TX Type	Frequency (MHz)	Maximum Average Conducted Output Power (dBm)		Verdict
			ANT1	Limit	
802.11a	SISO	5180	10.65	<=23.98	Pass
		5200	10.43	<=23.98	Pass
		5240	11.30	<=23.98	Pass
802.11n (HT20)	SISO	5180	9.60	<=23.98	Pass
		5200	9.84	<=23.98	Pass
		5240	10.61	<=23.98	Pass
802.11n (HT40)	SISO	5190	10.28	<=23.98	Pass
		5230	10.87	<=23.98	Pass
802.11ac (VHT20)	SISO	5180	9.29	<=23.98	Pass
		5200	9.57	<=23.98	Pass
		5240	10.32	<=23.98	Pass
802.11ac (VHT40)	SISO	5190	10.13	<=23.98	Pass
		5230	10.45	<=23.98	Pass
802.11ac (VHT80)	SISO	5210	10.33	<=23.98	Pass

Note1: Antenna Gain: Ant1: 1.54dBi;



4. Maximum Power Spectral Density

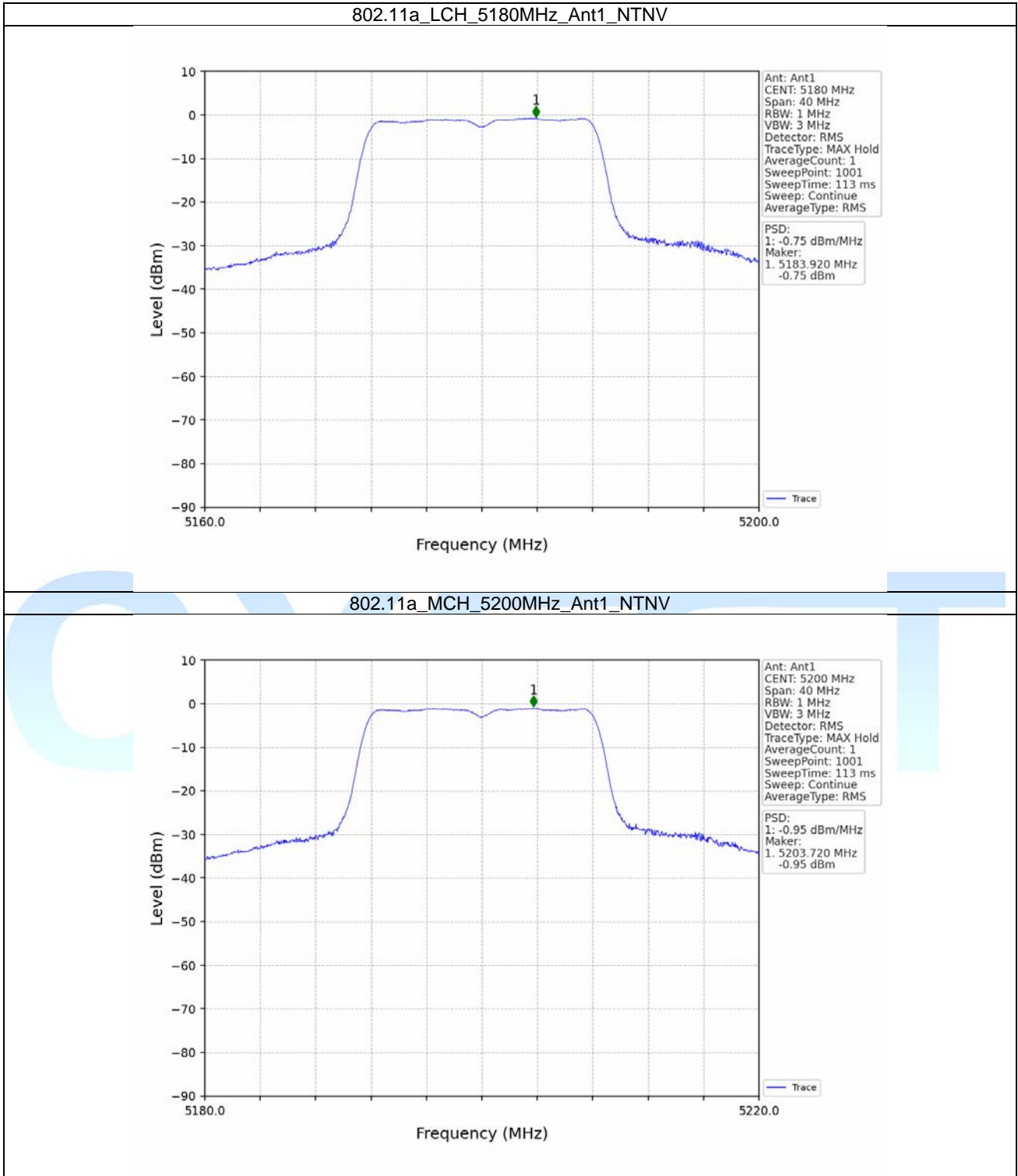
4.1 PSD

4.1.1 Test Result

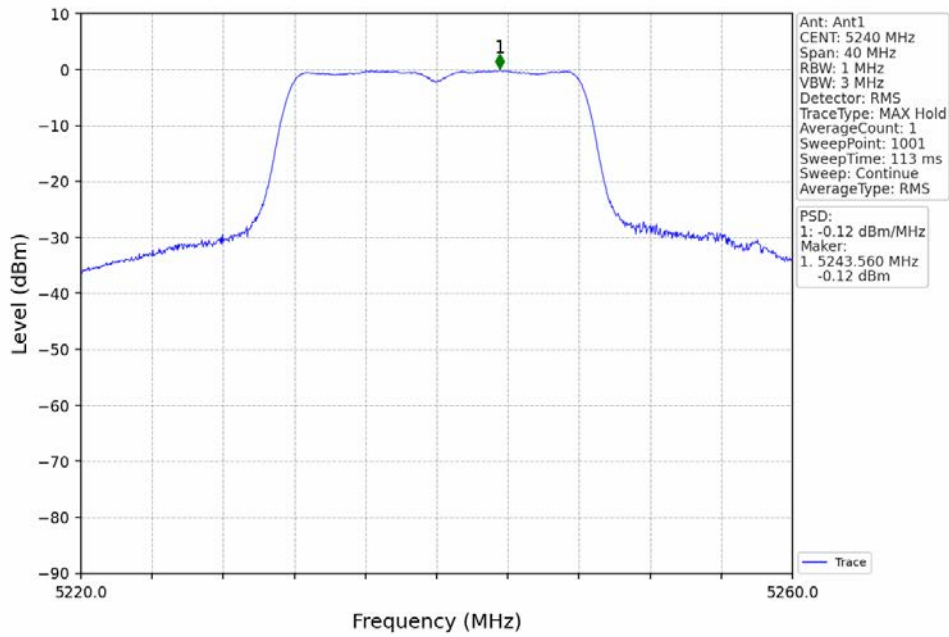
Mode	TX Type	Frequency (MHz)	Maximum PSD (dBm/MHz)		Verdict
			ANT1	Limit	
802.11a	SISO	5180	-0.75	<=11	Pass
		5200	-0.95	<=11	Pass
		5240	-0.12	<=11	Pass
802.11n (HT20)	SISO	5180	-1.76	<=11	Pass
		5200	-1.72	<=11	Pass
		5240	-1.01	<=11	Pass
802.11n (HT40)	SISO	5190	-3.87	<=11	Pass
		5230	-3.31	<=11	Pass
802.11ac (VHT20)	SISO	5180	-2.15	<=11	Pass
		5200	-1.95	<=11	Pass
		5240	-1.18	<=11	Pass
802.11ac (VHT40)	SISO	5190	-3.94	<=11	Pass
		5230	-3.73	<=11	Pass
802.11ac (VHT80)	SISO	5210	-6.42	<=11	Pass

Note1: Antenna Gain: Ant1: 1.54dBi;
Note2: Test result contains DCCF

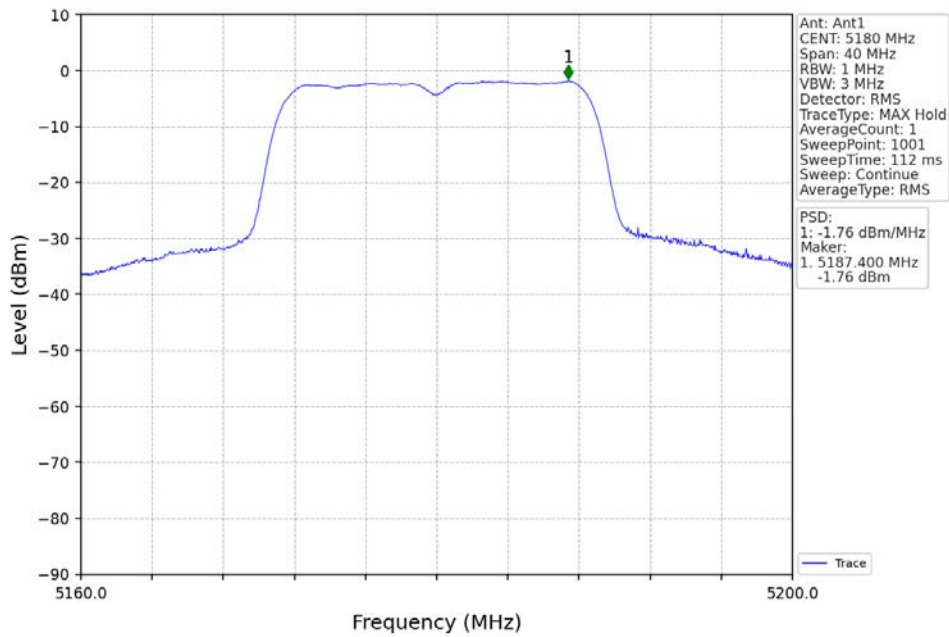
4.1.2 Test Graph



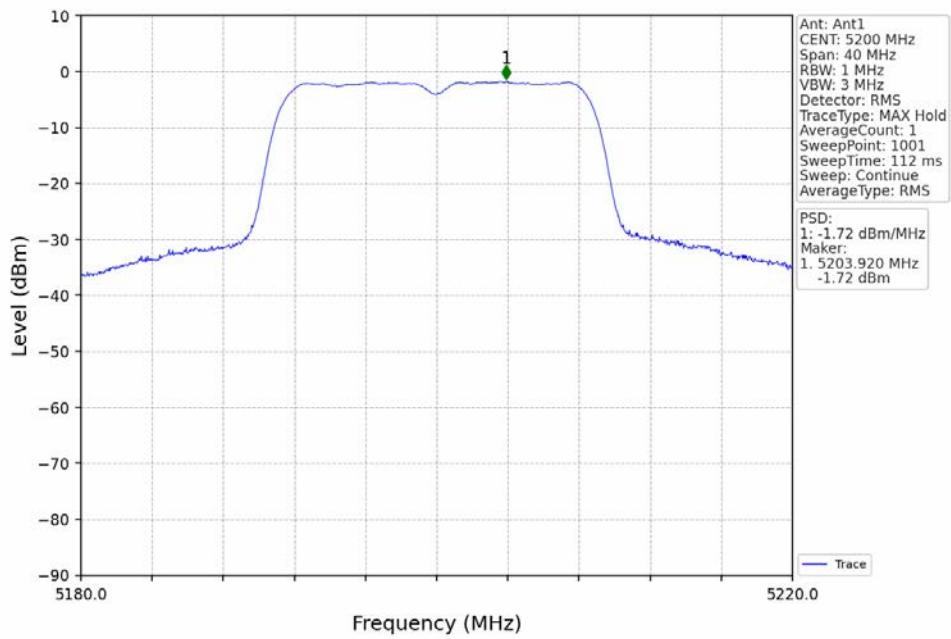
802.11a_HCH_5240MHz_Ant1_NTNV



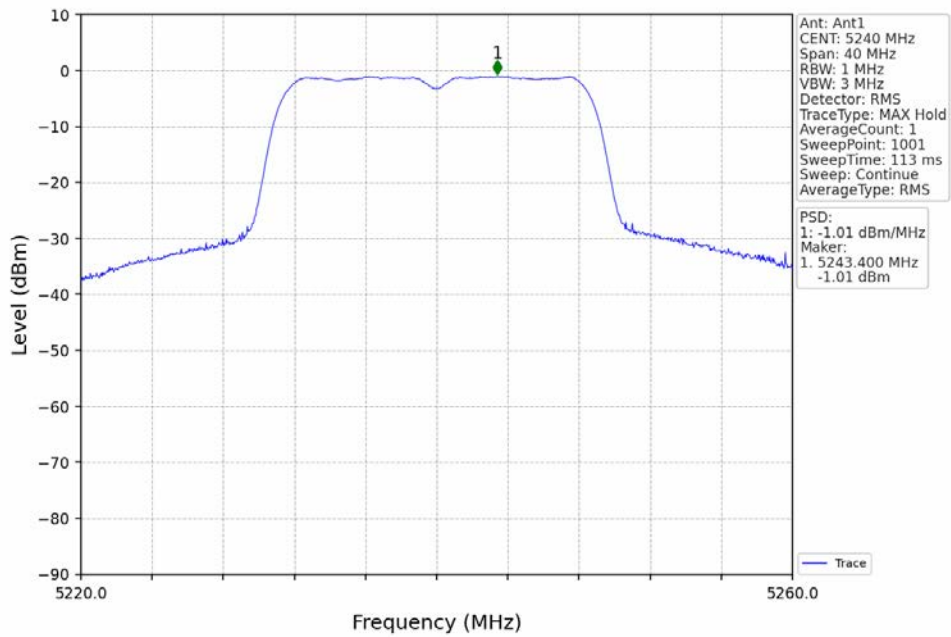
802.11n(HT20)_LCH_5180MHz_Ant1_NTNV



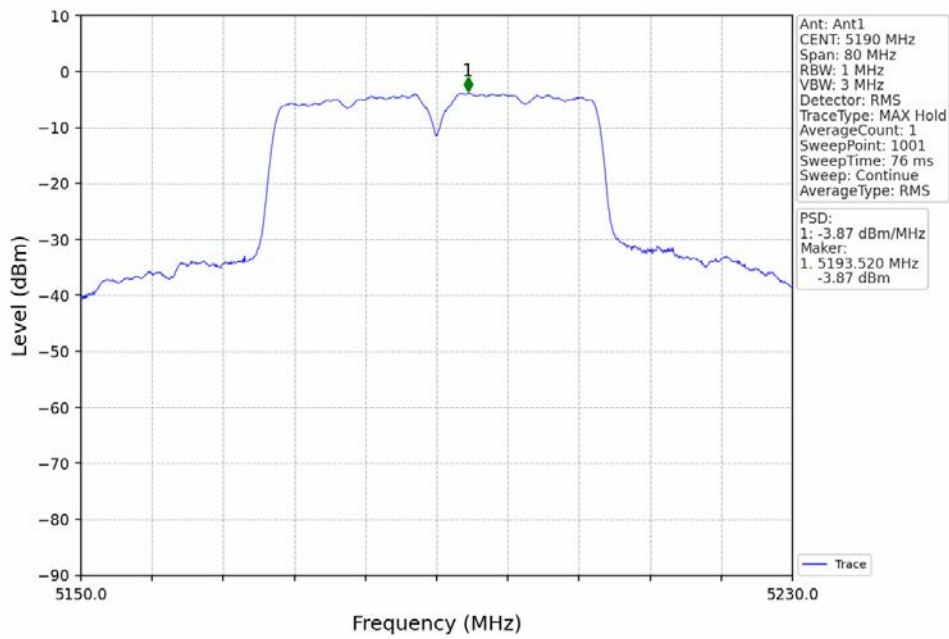
802.11n(HT20)_MCH_5200MHz_Ant1_NTNV



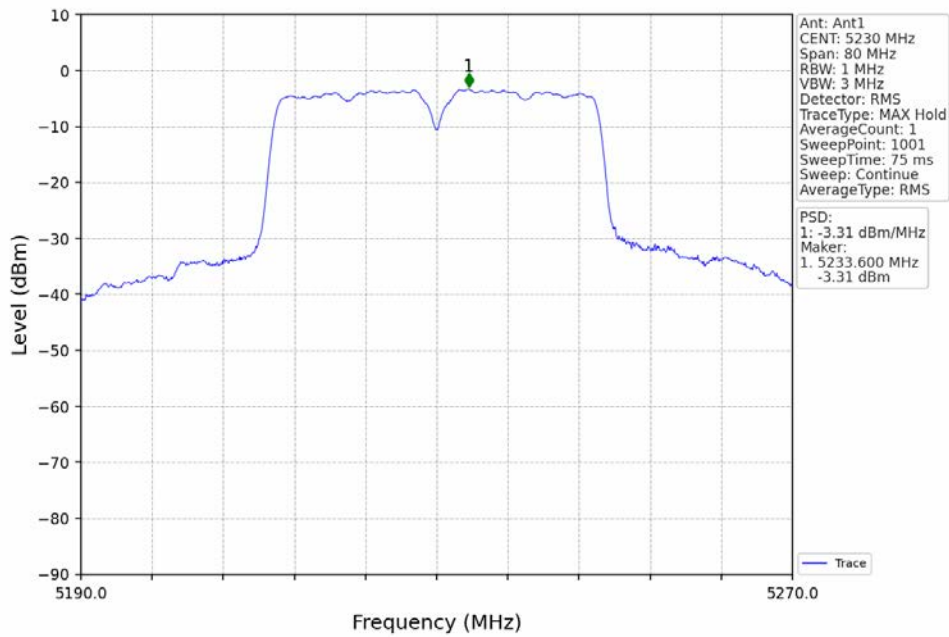
802.11n(HT20)_HCH_5240MHz_Ant1_NTNV



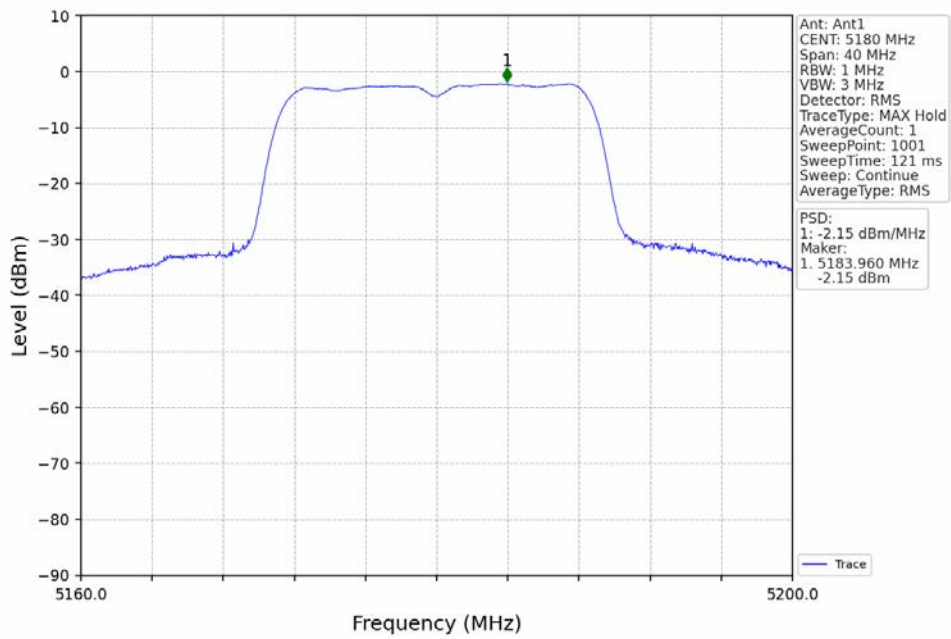
802.11n(HT40)_LCH_5190MHz_Ant1_NTNV



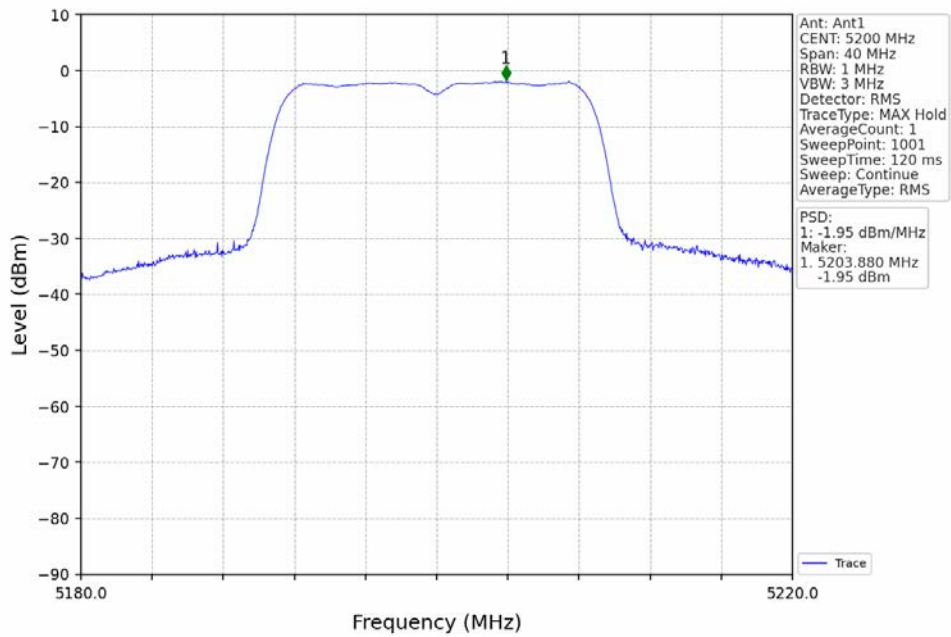
802.11n(HT40)_HCH_5230MHz_Ant1_NTNV



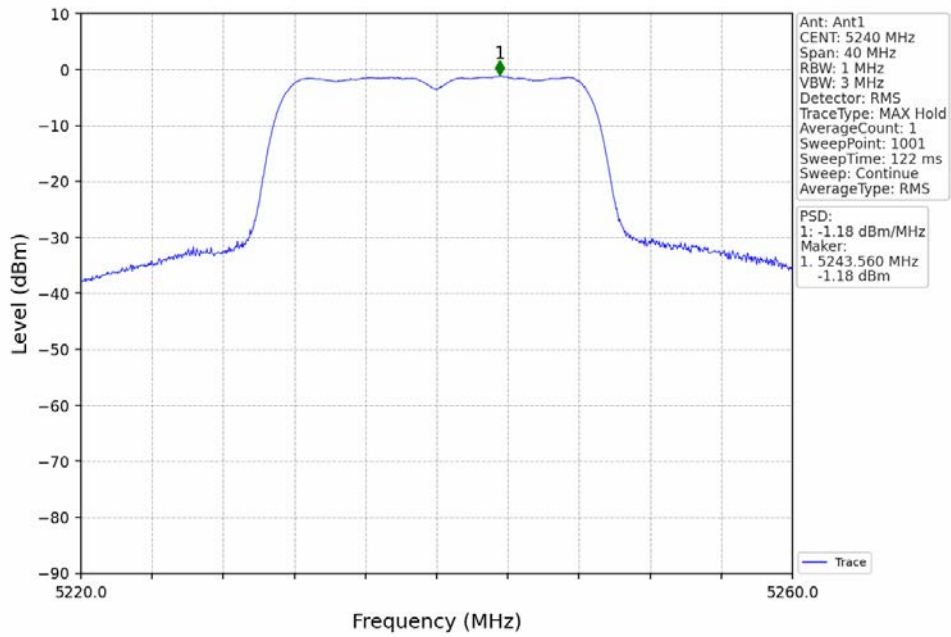
802.11ac(VHT20)_LCH_5180MHz_Ant1_NTNV



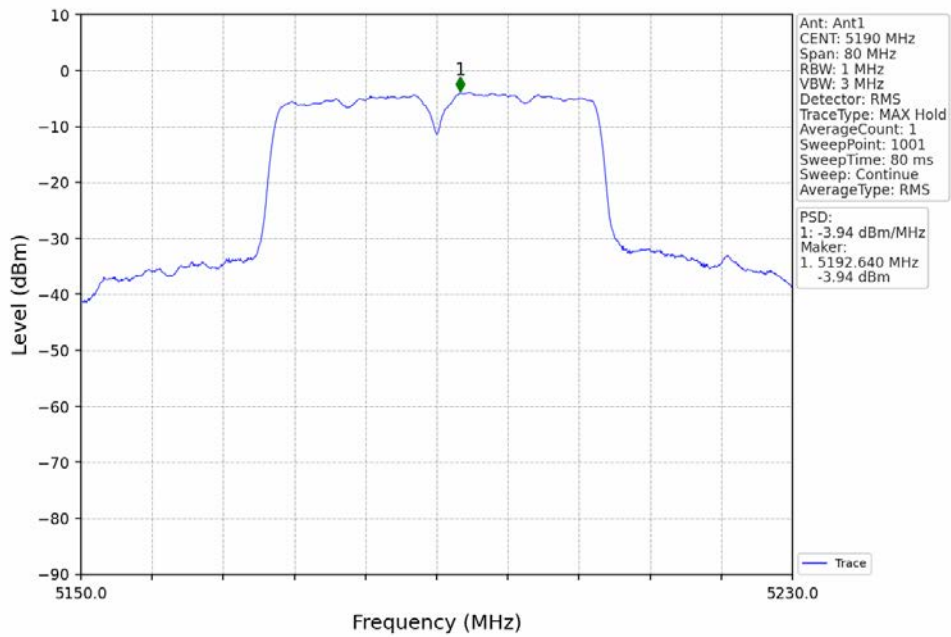
802.11ac(VHT20)_MCH_5200MHz_Ant1_NTNV



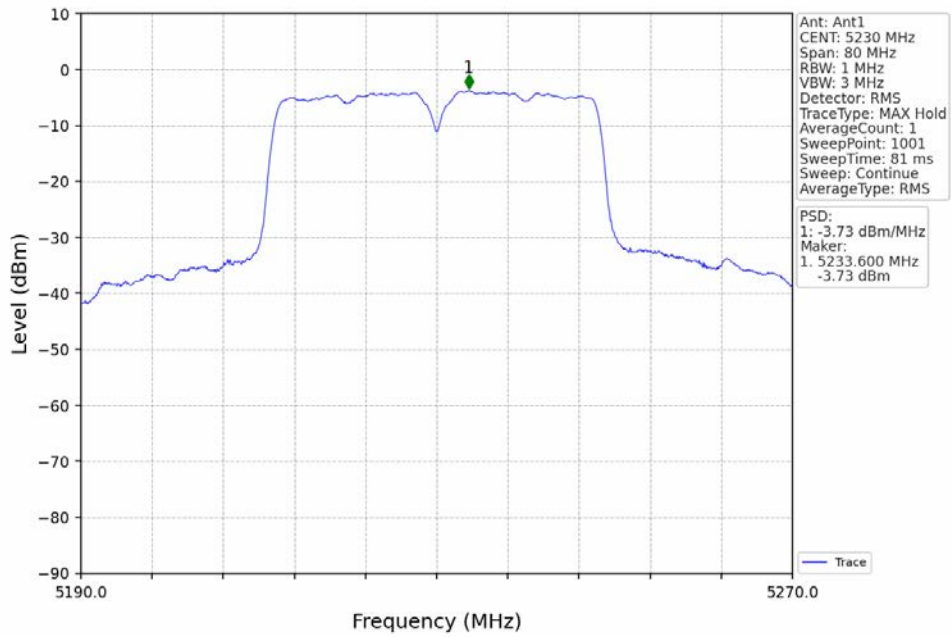
802.11ac(VHT20)_HCH_5240MHz_Ant1_NTNV



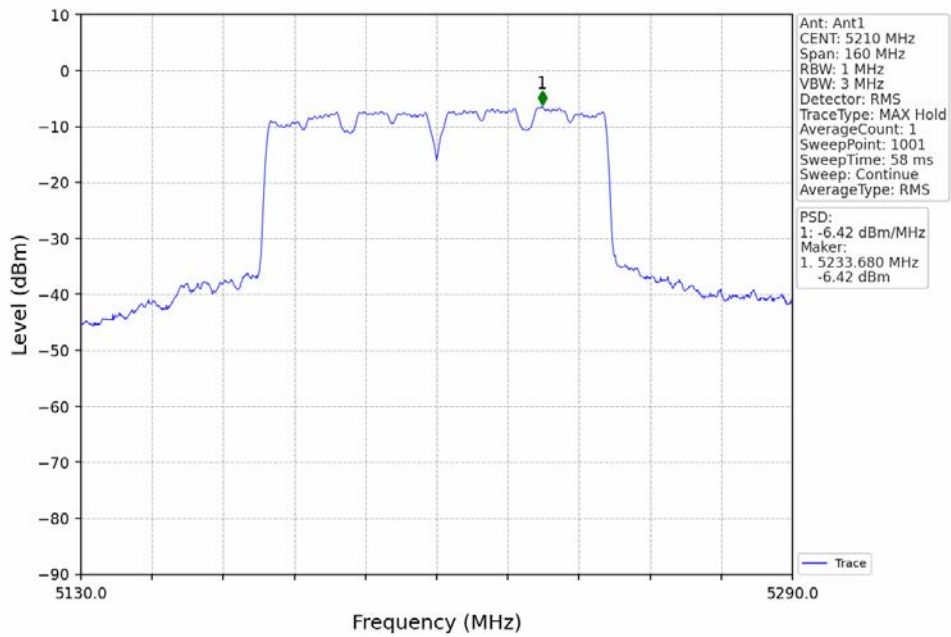
802.11ac(VHT40)_LCH_5190MHz_Ant1_NTNV



802.11ac(VHT40)_HCH_5230MHz_Ant1_NTNV



802.11ac(VHT80)_MCH_5210MHz_Ant1_NTNV





5. Frequency Stability

5.1 Ant1

5.1.1 Test Result

Ant1								
Mode	TX Type	Frequency (MHz)	Temperature (°C)	Voltage (VAC)	Measured Frequency (MHz)	Limit (MHz)	Verdict	
Carrier Wave	SISO	5180	20	102	5179.999	5150 to 5250	Pass	
				120	5179.999	5150 to 5250	Pass	
				138	5179.999	5150 to 5250	Pass	
			-30	120	5179.999	5150 to 5250	Pass	
				-20	120	5179.999	5150 to 5250	Pass
					120	5179.999	5150 to 5250	Pass
				-10	120	5179.999	5150 to 5250	Pass
					120	5179.999	5150 to 5250	Pass
				0	120	5179.999	5150 to 5250	Pass
		10		120	5179.999	5150 to 5250	Pass	
		30	120	5179.999	5150 to 5250	Pass		
		40	120	5179.999	5150 to 5250	Pass		
		50	120	5179.999	5150 to 5250	Pass		
		5200	20	102	5199.999	5150 to 5250	Pass	
				120	5199.999	5150 to 5250	Pass	
				138	5199.999	5150 to 5250	Pass	
			-30	120	5199.999	5150 to 5250	Pass	
				-20	120	5199.999	5150 to 5250	Pass
					120	5199.999	5150 to 5250	Pass
				-10	120	5199.999	5150 to 5250	Pass
					120	5199.999	5150 to 5250	Pass
				0	120	5199.999	5150 to 5250	Pass
		10		120	5199.999	5150 to 5250	Pass	
		30	120	5199.999	5150 to 5250	Pass		
		40	120	5199.999	5150 to 5250	Pass		
		50	120	5199.999	5150 to 5250	Pass		
		5240	20	102	5239.999	5150 to 5250	Pass	
				120	5239.999	5150 to 5250	Pass	
				138	5239.999	5150 to 5250	Pass	
			-30	120	5239.999	5150 to 5250	Pass	
				-20	120	5239.999	5150 to 5250	Pass
					120	5239.999	5150 to 5250	Pass
				-10	120	5239.999	5150 to 5250	Pass
					120	5239.999	5150 to 5250	Pass
				0	120	5239.999	5150 to 5250	Pass
		10		120	5239.999	5150 to 5250	Pass	
		30	120	5239.999	5150 to 5250	Pass		
		40	120	5239.999	5150 to 5250	Pass		
		50	120	5239.999	5150 to 5250	Pass		
		5190	20	102	5189.999	5150 to 5250	Pass	
				120	5189.999	5150 to 5250	Pass	
				138	5189.999	5150 to 5250	Pass	
			-30	120	5189.999	5150 to 5250	Pass	
				-20	120	5189.999	5150 to 5250	Pass
					120	5189.999	5150 to 5250	Pass
-10	120			5189.999	5150 to 5250	Pass		
	120			5189.999	5150 to 5250	Pass		
0	120			5189.999	5150 to 5250	Pass		
10	120	5189.999		5150 to 5250	Pass			
30	120	5189.999	5150 to 5250	Pass				
40	120	5189.999	5150 to 5250	Pass				
50	120	5189.999	5150 to 5250	Pass				
5230	20	102	5229.999	5150 to 5250	Pass			
		120	5229.999	5150 to 5250	Pass			
		138	5229.999	5150 to 5250	Pass			

			-30	120	5229.999	5150 to 5250	Pass
			-20	120	5229.999	5150 to 5250	Pass
			-10	120	5229.999	5150 to 5250	Pass
			0	120	5229.999	5150 to 5250	Pass
			10	120	5229.999	5150 to 5250	Pass
			30	120	5229.999	5150 to 5250	Pass
			40	120	5229.999	5150 to 5250	Pass
			50	120	5229.999	5150 to 5250	Pass
		5210	20	102	5209.999	5150 to 5250	Pass
				120	5209.999	5150 to 5250	Pass
				138	5209.999	5150 to 5250	Pass
			-30	120	5209.999	5150 to 5250	Pass
			-20	120	5209.999	5150 to 5250	Pass
			-10	120	5209.999	5150 to 5250	Pass
			0	120	5209.999	5150 to 5250	Pass
			10	120	5209.999	5150 to 5250	Pass
			30	120	5209.999	5150 to 5250	Pass
			40	120	5209.999	5150 to 5250	Pass
			50	120	5209.999	5150 to 5250	Pass

▶▶▶ END OF REPORT ◀◀◀