

# 深圳市亿圣邦科技有限公司

## Shenzhen Yishengbang Technology Co., Ltd Antenna Test Report

Customer: 亿莱顿

Project: SW2495(R136主板)

Product: WIFI Antenna

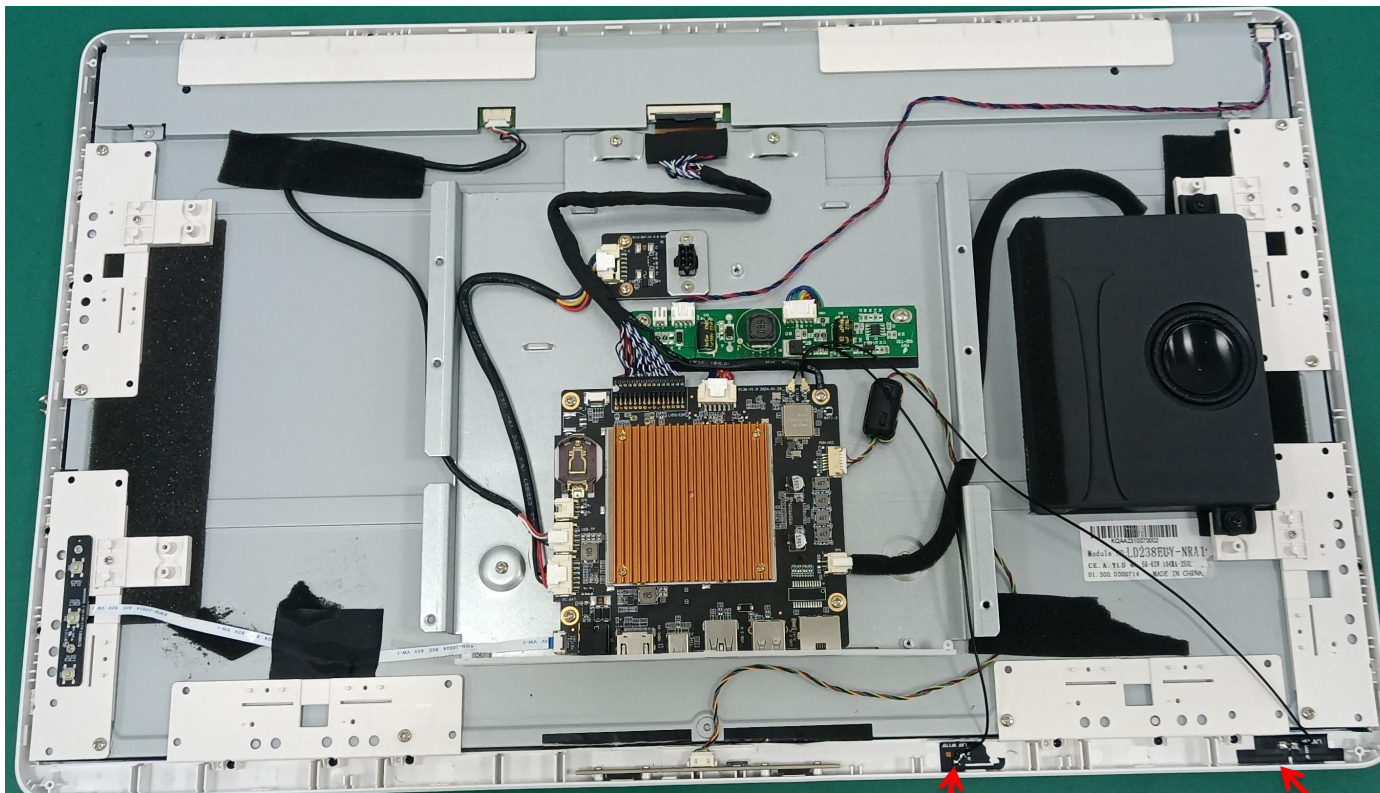
Report date: 2024.4.1

Prepared by : 罗涛

Checked by : 黄震

Approved by : 林美财

# 1. Product Overview

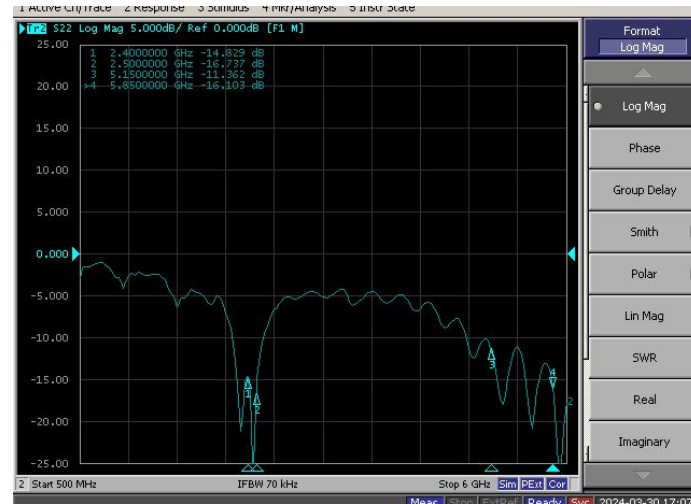


WiFi2天线

WiFi1天线

# 2. Test Result

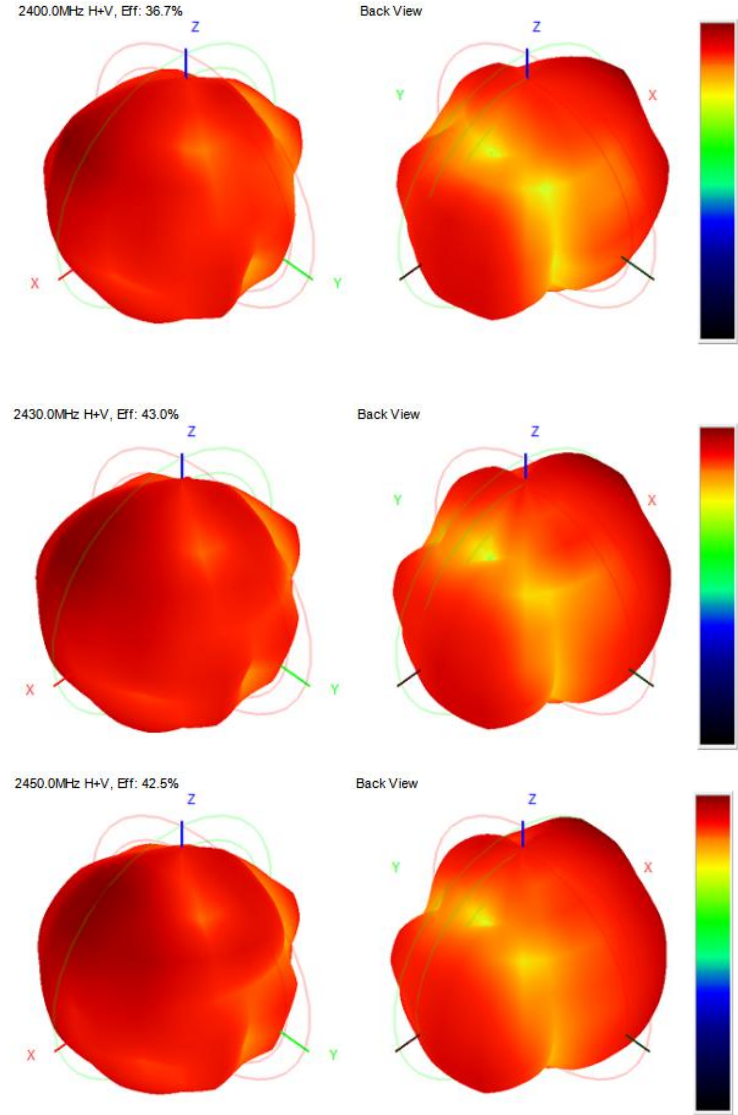
## 2.1.1 WIFI1 Antenna VSWR/S11



# 2. Test Result

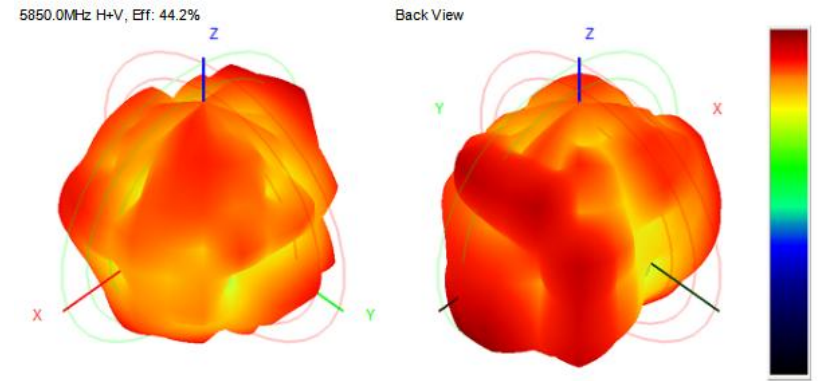
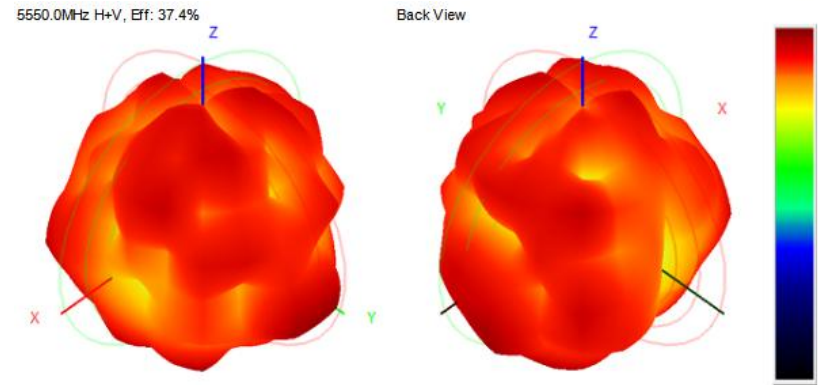
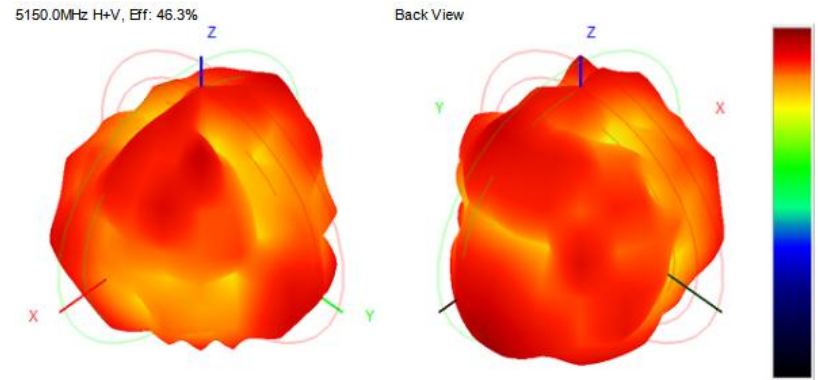
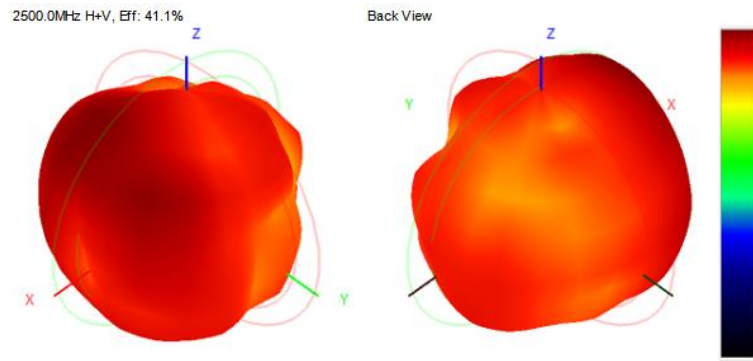
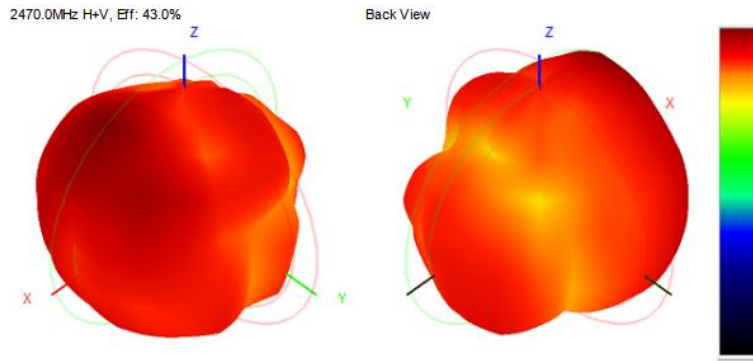
## 2.1.2 无源数据

Frequency (MHz)	Efficiency (dBi)	Gain (dBi)	Efficiency (%)
2400	-4.35	0.90	36.74
2410	-3.98	1.26	40.00
2420	-3.84	1.20	41.33
2430	-3.67	0.92	42.97
2440	-3.78	0.75	41.90
2450	-3.72	0.92	42.48
2460	-3.49	1.21	44.74
2470	-3.66	1.31	43.04
2480	-3.67	1.02	42.92
2490	-3.68	0.79	42.83
2500	-3.86	0.89	41.14
5150	-3.34	2.58	46.35
5250	-3.99	0.80	39.91
5550	-4.27	0.92	37.41
5750	-3.60	1.82	43.61
5850	-3.54	1.70	44.23



# 2. Test Result

## 2.1.2 无源数据



## 2. Test Result

### 2.1.3 WIFI Antenna 有源导数据

B-11Mbps		
	TRP	TIS
1	14.46	-81.57
6	14.64	-81.68
11	14.69	-82.23

G-54Mbps		
	TRP	TIS
1	12.43	-71.22
6	12.24	-71.71
11	12.11	-71.77

N-MCS7		
	TRP	TIS
1	12.49	-70.01
6	12.25	-70.57
11	12.13	-70.23

A-54Mbps		
	TRP	TIS
36	13.81	-71.79
149	13.3	-71.25
165	13.9	-71.06

### 3. Conclusions

谢谢！