

# 深圳市亿圣邦科技有限公司 样品承认书

## SPECIFICATION FOR APPROVAL

Company Name: SHENZHEN ELECTRON TECHNOLOGY CO., LTD.

Specifications Model: WF2135

Supplier Name: Shenzhen Yishengbang Technology Co., Ltd.

Supplier Specification Model: WIFI1: SLK-YLD-T3010-L-300I-G

承 认 签 章					
供 应 商 承 认 (SLK 填写栏)			深圳市亿莱顿科技有限公司		
工 程 师	审 核	批 准	工 程 师	审 核	批 准
陈仕联	黄震	林美财	刘建红		
盖章签署		盖章签署			
日 期	2023-10-18		日 期		
批示: <input type="checkbox"/> 接受 <input type="checkbox"/> 有条件接受					
备注 (客户填写):					

供应商名称: 深圳市亿圣邦科技有限公司

供应商地址: 东莞市塘厦镇蛟乙塘银园街 5 号厂房 2 楼

电 话: 0755-294300882

传 真: 0755-29163512

# WiFi1 Antenna (T3010)

## 1. Explanation of Product number :

**S L K - Y L D - T 3 0 1 0 - L - 3 0 0 I - G**

**1                    2                    3                    4                    5**



Product Code:

(1) Customer:

YLD:亿莱顿

(2) Project:

T3010: SLK-YLD-T3010 (WiFi1 antenna)

(3) Welding Position

L: Left

(4) Cable Length:

300I: 300\*1.13MM一代端子

(5) Cable Color

G: Gray

## 2. Features

\*Stable and reliable in performances

\*Compact size

\*RoHS compliance

### 3. Applications

- \* IEEE802.11 (a/b/g/n)
- \* Hand-held devices when WIFI (802.11a/b/g/n) functions are needed

### 4. Description

Holy bond's FPC antenna series are specially designed for WIFI (802.11a/b/g/n) applications. Based on Holy bond's proprietary design and processes, this FPC antenna has excellent stability and sensitivity to consistently provide high signal reception efficiency.

### 5. Electrical Specifications

#### 5-1

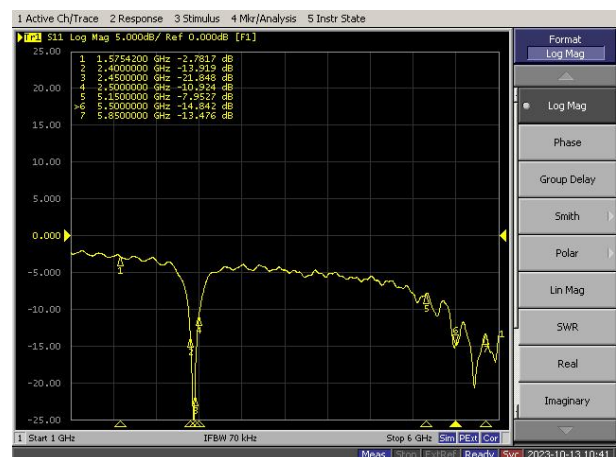
Characteristics	Specifications	Unit
Outline Dimensions	30*10.95*5.2 T=0.4	mm
Center Frequency	2.4-2.5-5.15-5.85	GHz
Bandwidth(under-10dB return loss)	130min	MHz
VSWR	3max	

#### 5-2.

#### VSWR

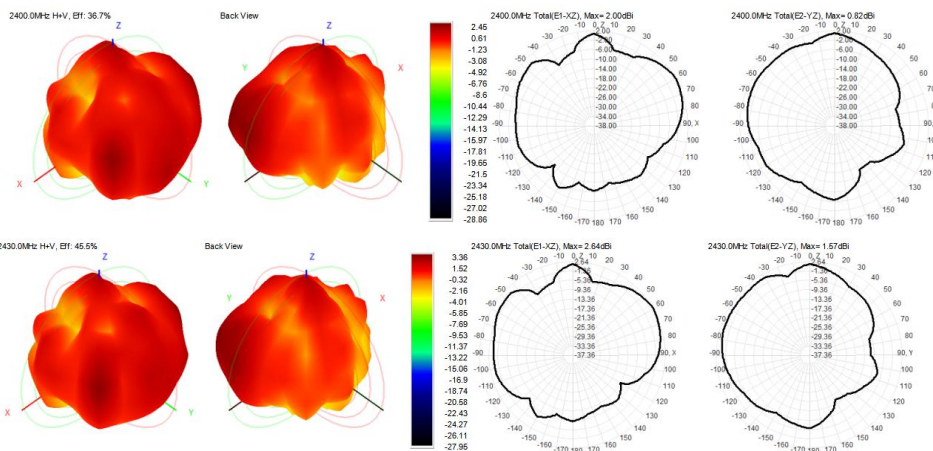


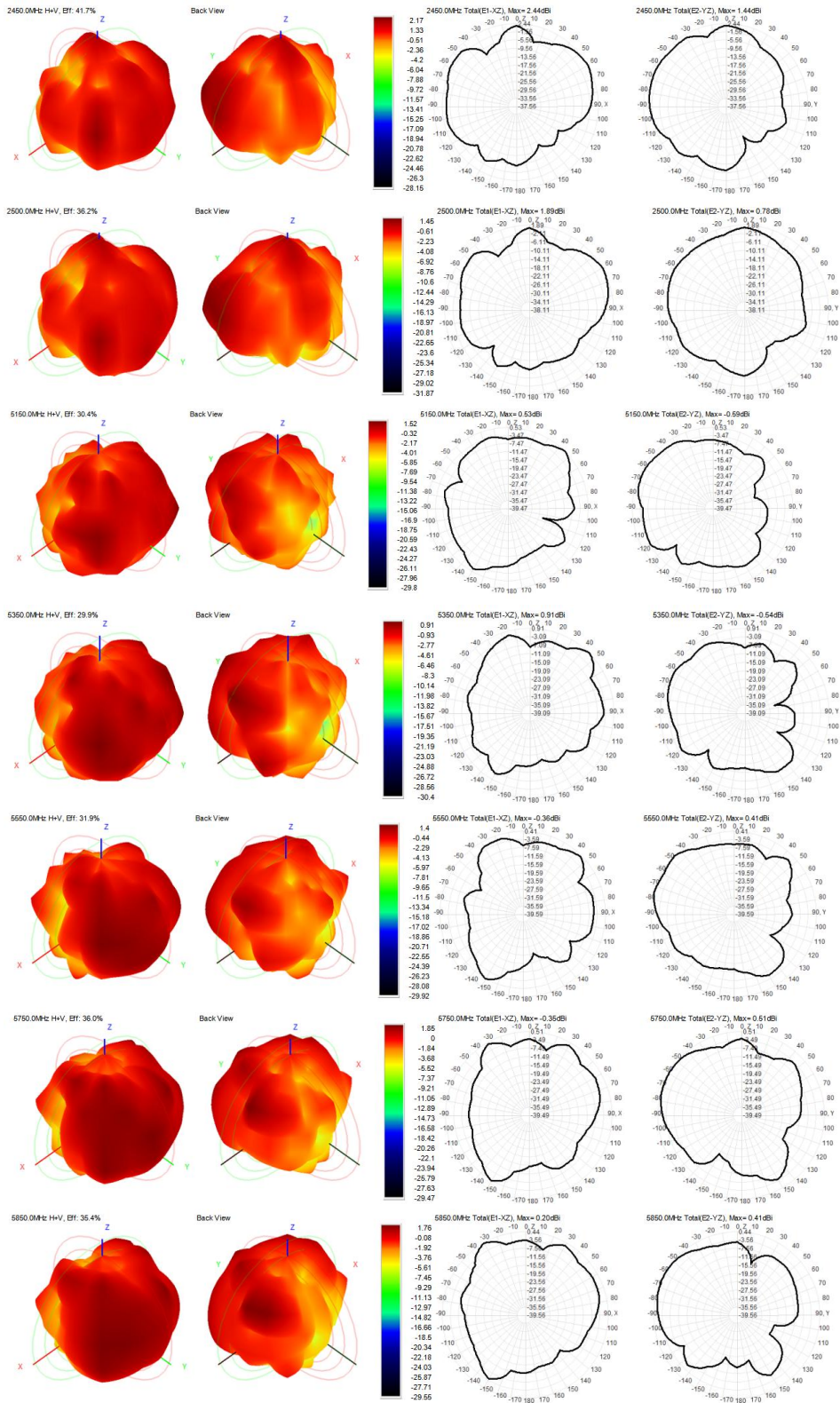
#### S11



### 5-3.WIFI +BT Antenna Gain/Efficiency/Radiation Pattern of 3D

Frequency (MHz)	Efficiency (dBi)	Gain (dBi)	Efficiency (%)
2400.0	-4.35	2.45	36.75
2410.0	-3.88	1.96	40.94
2420.0	-3.54	2.39	44.24
2430.0	-3.42	2.36	45.46
2440.0	-3.65	2.28	43.17
2450.0	-3.80	2.17	41.70
2460.0	-4.03	1.89	39.55
2470.0	-4.31	1.80	37.11
2480.0	-4.28	1.96	37.32
2490.0	-4.68	1.50	34.03
2500.0	-4.41	1.45	36.19
5150.0	-5.17	1.52	30.38
5350.0	-5.24	0.91	29.94
5550.0	-4.96	1.40	31.90
5750.0	-4.44	1.85	35.96
5850.0	-4.51	1.76	35.42

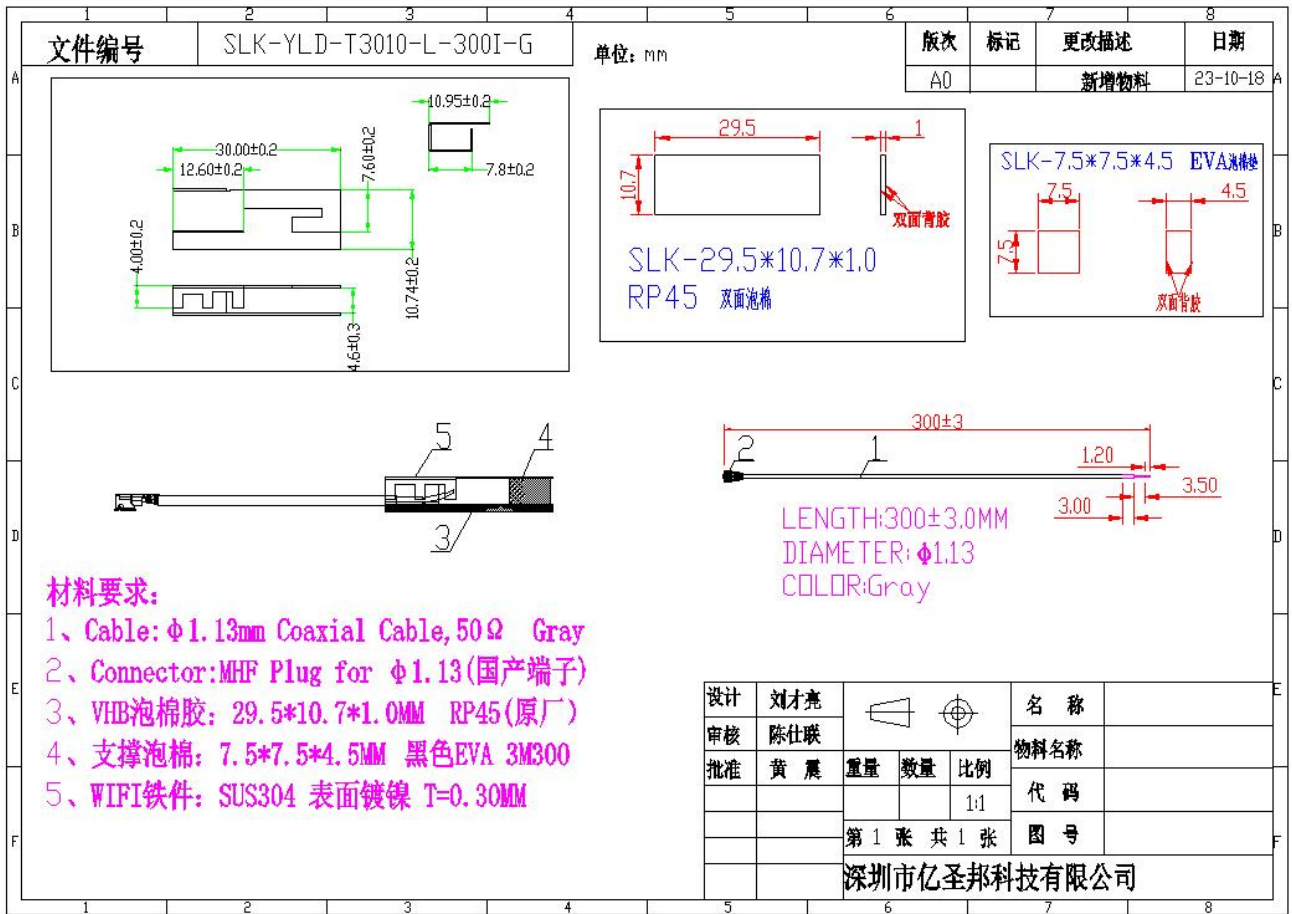




## WIFI 有源测试

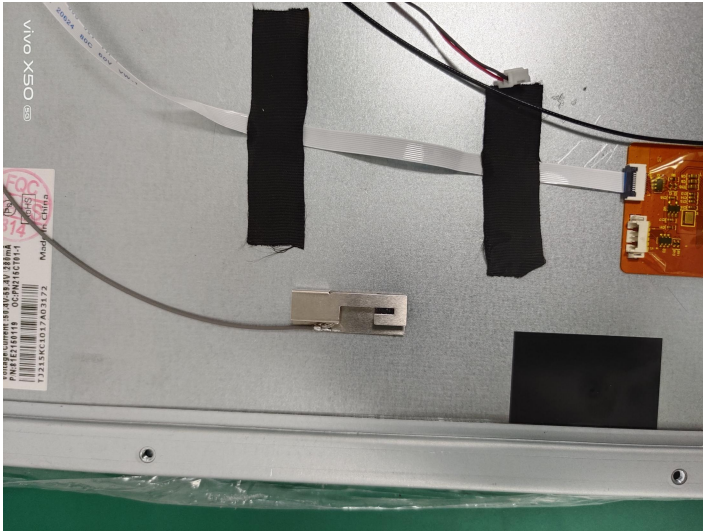
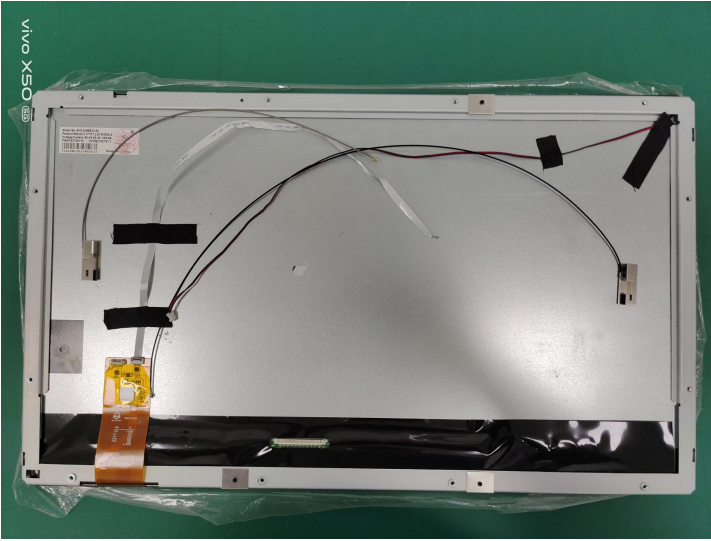
频段	1	6	11
B-TRP-11MBps	15.23	16.03	16.55
B-TIS-11MBps	-81.5	-81.42	-81.17
G-TRP-54MBps	15.07	16.39	16.05
G-TIS-54MBps	-70.89	-71.17	-71.55
N-TRP-MCS7	15.09	16.04	16.16
N-TIS-MCS7	-70.2	-70.39	-70.93
频段	36	149	165
A-TRP-54MBps	13.09	14.23	14.61
A-TIS-54MBps	-70.44	-70.78	-71.21

## 6. Antenna Dimensions (unit: mm)





## 7. Antenna Picture



WIFI 1 天线