

**Shenzhen Yishengbang Technology Co., Ltd**

**深圳市亿圣邦科技有限公司**

**样品承认书**

**SPECIFICATION FOR APPROVAL**

Model : [WIFI:SLK-YLD-4406A-M-115I-B](#)

Shenzhen Yishengbang Technology Co., Ltd

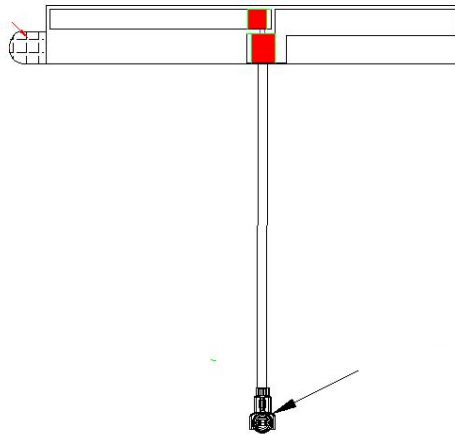
Room 101, Building C, Qianwan Ying technology Park, Gushu, Xixiang, Baoan district, 518000, Guangdong, China

Tel.: 18025305599

Tel.: 18666299104

# WIFI

## 1. Explanation of Product number :



Product Code:

- (1) Customer: YLD
- (2) Antenna Name: WIFI Antenna
- (3) Connector: 1.13 black wire, total length 115mm

## 2. Features

- \*Stable and reliable in performances
- \*Compact size
- \*RoHS compliance

## 3. Applications

- \* IEEE802.11 (b/g/n)
- \* Hand-held devices when WIFI (802.11b/g/n) functions are needed

## 4. Description

Holy bond's FPC antenna series are specially designed for WIFI (802.11b/g/n) applications. Based on Holy bond's proprietary design and processes, this FPC antenna has excellent stability and sensitivity to consistently provide high signal reception efficiency.

## 5. Electrical Specifications

### 5-1

Characteristics	Specifications	Unit
Outline Dimensions	44.6x6.33x0.12	mm
Center Frequency	2.4-2.5	GHz
Bandwidth(under-10dB return loss)	130min	MHz
VSWR	3max	

### 5-2.

VSWR

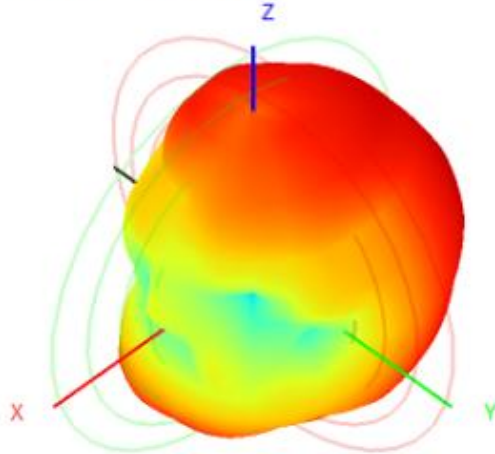
S11



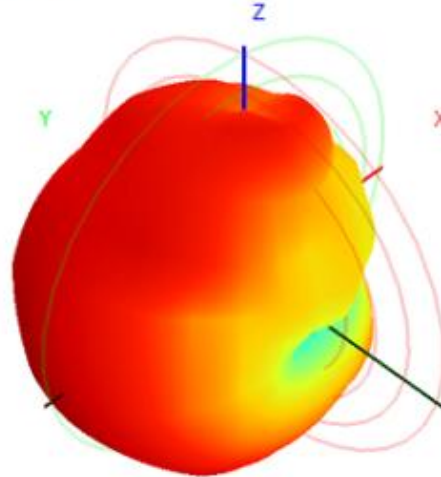
### 5-3.WIFI +BT Antenna Gain/Efficiency/Radiation Pattern of 3D

Frequency (MHz)	2400.0	2410.0	2420.0	2430.0	2440.0	2450.0	2460.0	2470.0	2480.0	2490.0	2500.0
Efficiency (dBi)	-2.89	-2.80	-2.96	-2.70	-3.00	-3.01	-3.02	-3.10	-2.75	-2.94	-3.09
Gain (dBi)	2.57	2.51	2.12	2.31	2.28	2.13	2.33	2.60	3.10	3.25	2.86
Efficiency (%)	51.36	52.44	50.53	53.69	50.11	49.95	49.86	48.94	53.10	50.80	49.06

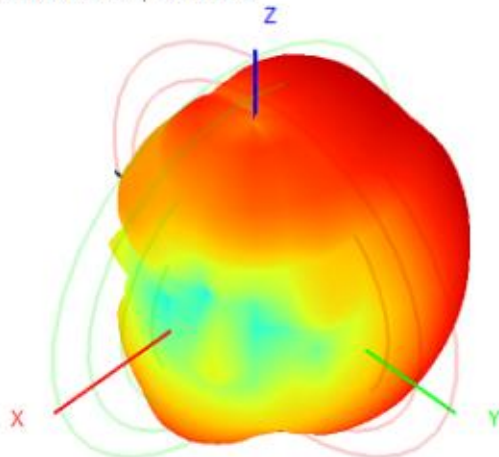
2400.0MHz H+V, Eff: 51.4%



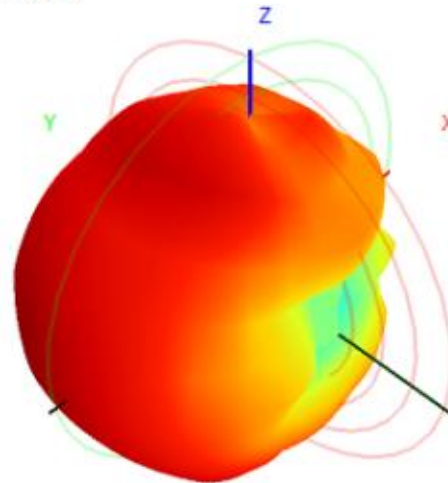
Back View



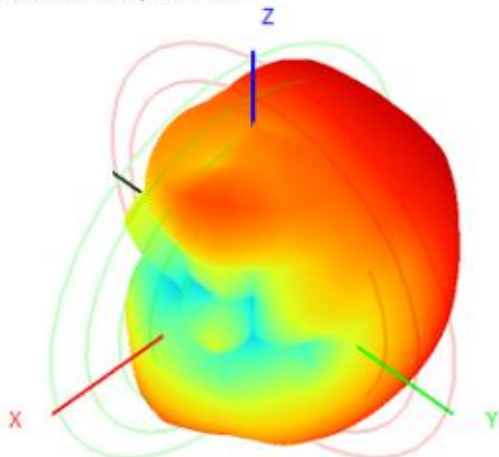
2450.0MHz H+V, Eff: 50.0%



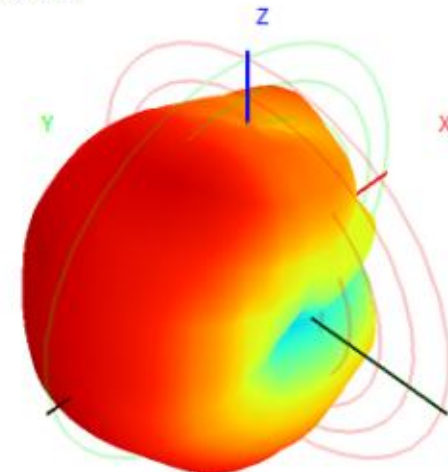
Back View



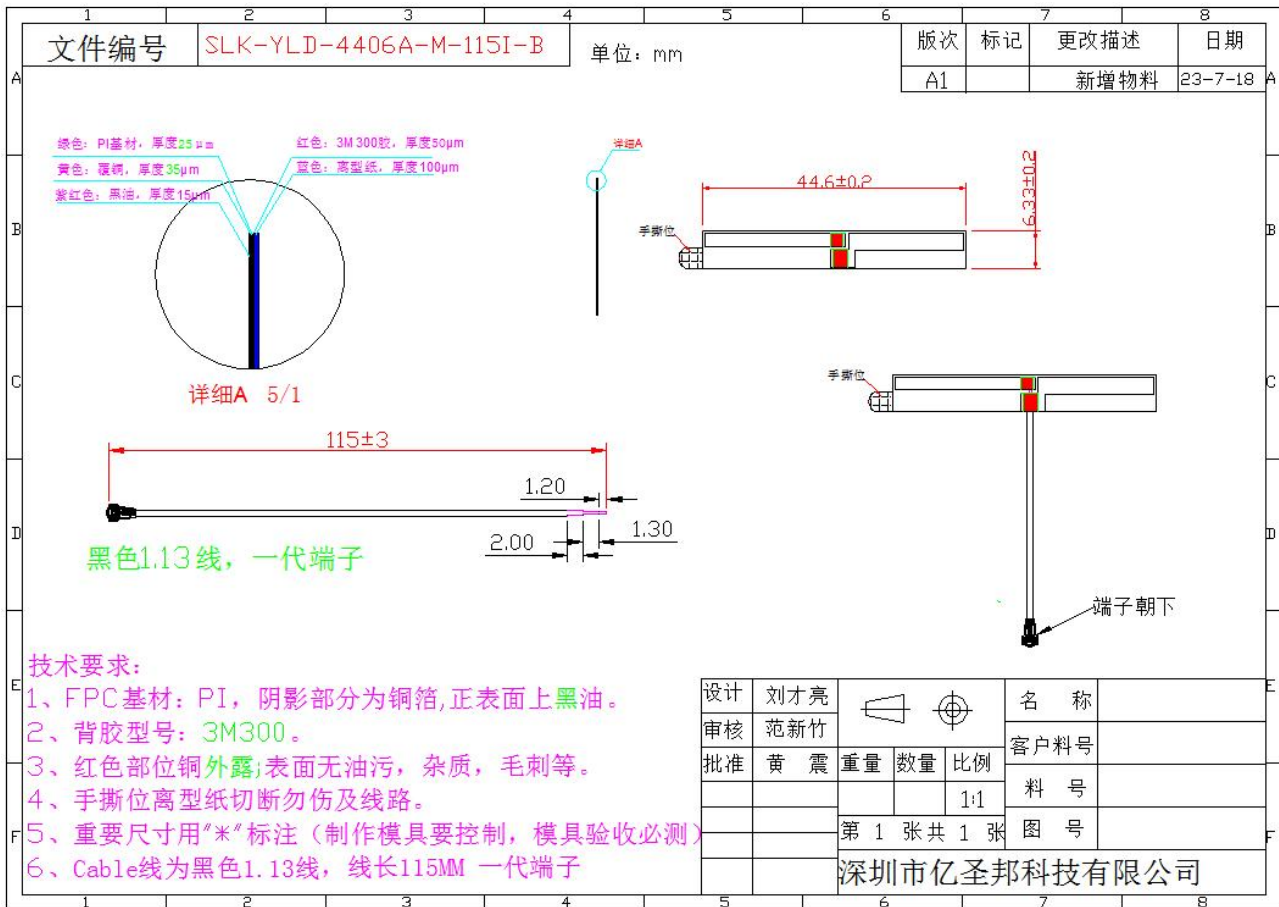
2500.0MHz H+V, Eff: 49.1%



Back View



## 6. Antenna Dimensions (unit: mm)





# 7. Antenna Picture

