

Shenzhen Yishengbang Technology Co., Ltd

深圳市亿圣邦科技有限公司

样品承认书

SPECIFICATION FOR APPROVAL

Model : WIFI:SLK-YLD-4406A-M-2001-B

Shenzhen Yishengbang Technology Co., Ltd

Room 101, Building C, Qianwan Ying technology Park, Gushu, Xixiang, Baoan district, 518000, Guangdong, China

Tel.: 18025305599

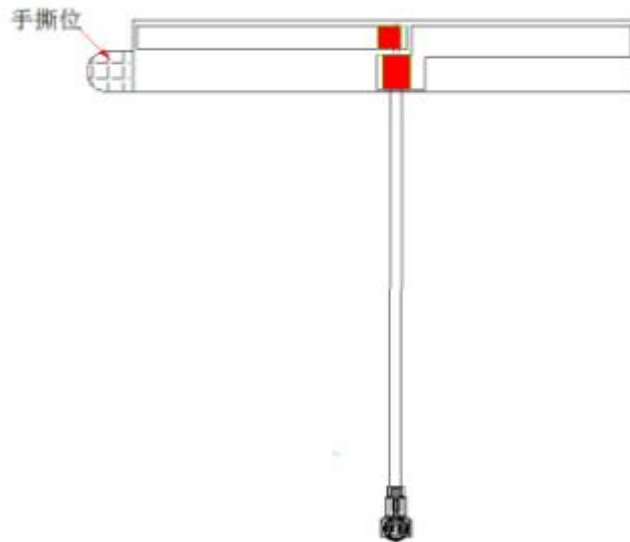
Tel.: 18666299104

WIFI Antenna (4406A)

1. Explanation of Product number :

S L K - Y L D - 4 4 0 6 A - M - 2 0 0 I - B

1 2 3 4 5



Product Code:

(1) Customer:

YLD

(2) Project:

4406A: SLK-YLD-4406A (WIFI antenna)

(3) Welding Position

M:Middle

(4) Cable Length:

200I: 200*1.13MM

(5)Cable Color

B: Black

2. Features

- *Stable and reliable in performances
- *Compact size
- *RoHS compliance

3. Applications

- * IEEE802.11 (b/g/n)
- * Hand-held devices when WIFI (802.11 b/g/n) functions are needed

4. Description

Holy bond's FPC antenna series are specially designed for WIFI (802.11 b/g/n) applications. Based on Holy bond's proprietary design and processes, this FPC antenna has excellent stability and sensitivity to consistently provide high signal reception efficiency.

5. Electrical Specifications

5-1

Characteristics	Specifications	Unit
Outline Dimensions	44.6x6.33x 0.12	mm
Center Frequency	2.4-2.5	GHz
Bandwidth(under-10dB return loss)	130min	MHz
VSWR	3max	

5-2.

VSWR

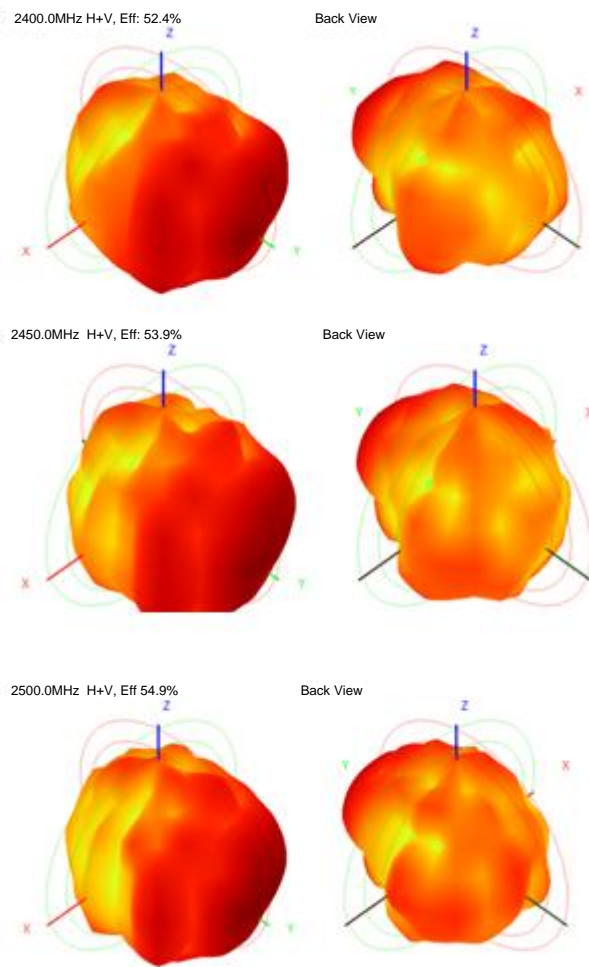


S11

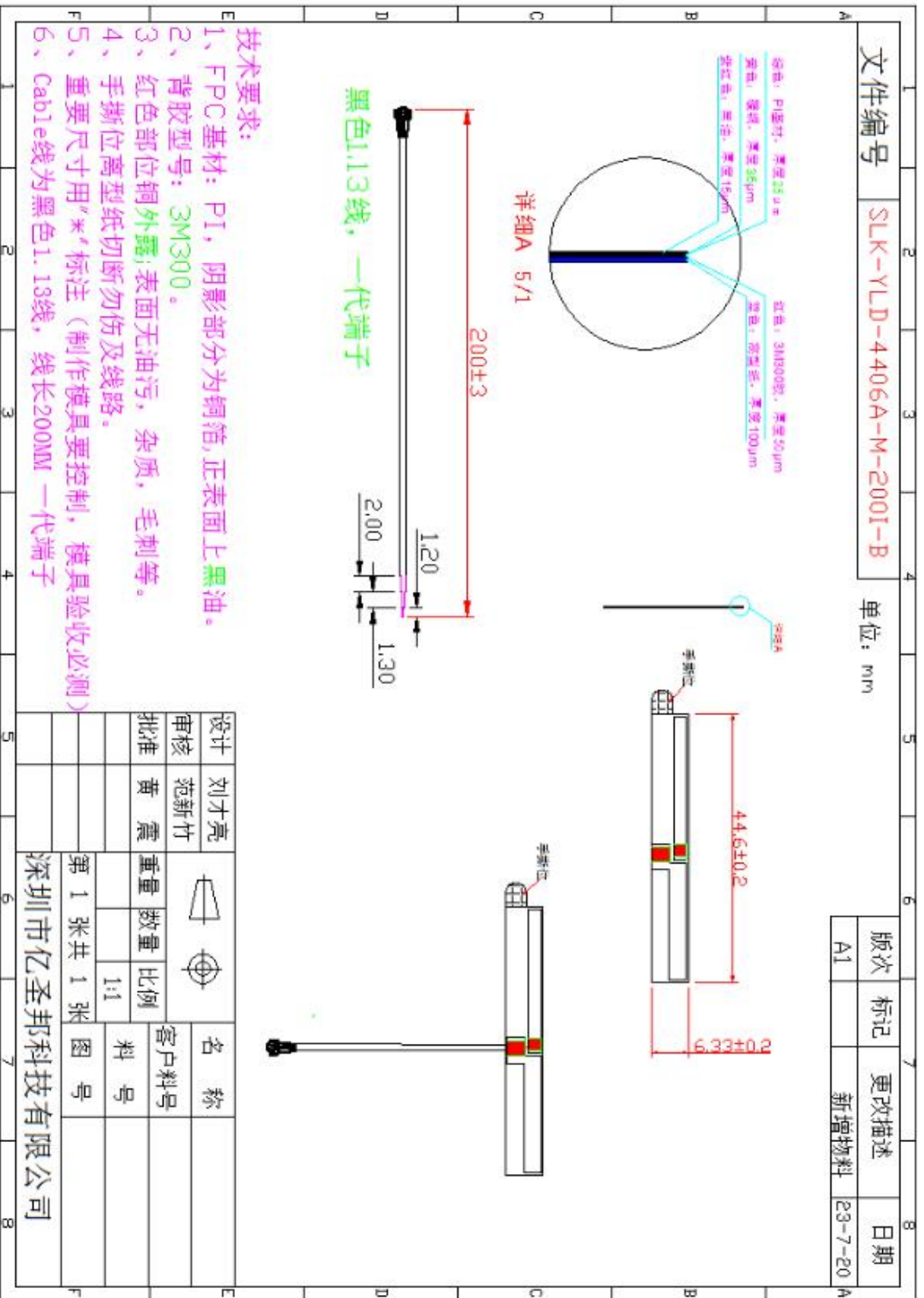


5-3.WIFI Antenna Gain/Efficiency/Radiation Pattern of 3D

Frequency	Efficiency	Gain (dBi)	Efficiency (%)
2400.0	-2.81	2.75	52.40
2410.0	-2.67	2.65	54.06
2420.0	-2.62	2.88	54.70
2430.0	-2.46	2.93	56.74
2440.0	-2.62	2.92	54.76
2450.0	-2.68	2.87	53.93
2460.0	-2.62	2.76	54.66
2470.0	-2.83	2.88	52.12
2480.0	-2.68	2.58	53.93
2490.0	-2.72	2.79	53.42
2500.0	-2.85	2.40	51.86



6. Antenna Dimensions (unit: mm)



7. Antenna Picture

