

深圳市亿圣邦科技有限公司

Shenzhen Yishengbang Technology Co., Ltd.

深圳市宝安区西乡街道南昌社区深圳前湾硬科技产业园C栋101

101, Building C, Shenzhen Qianwan Hard Technology Industrial Park, Nanchang Community,
Xixiang Street, Bao'an District, Shenzhen, China

Antenna Test Report

Customer: 亿莱顿

Project: WF2489

Antenna No.: SLK-YLD-3028A-L-400I-B

Product: WIFI Antenna Report date:

2024.09.13

Prepared by : 胡雪文

Checked by : 黄震

Approved by : 林美财

Purpose

This report is to measure the performance of SLK for Master Antenna on亿莱顿. All measure data are showed below.

Content

1. Product Overview

2. Test Result

2.1 WIFI MAIN Antenna VSWR

2.2 WIFI MAIN Antenna Gain/Efficiency/3D DATA

2.3 WIFI AUX Antenna VSWR

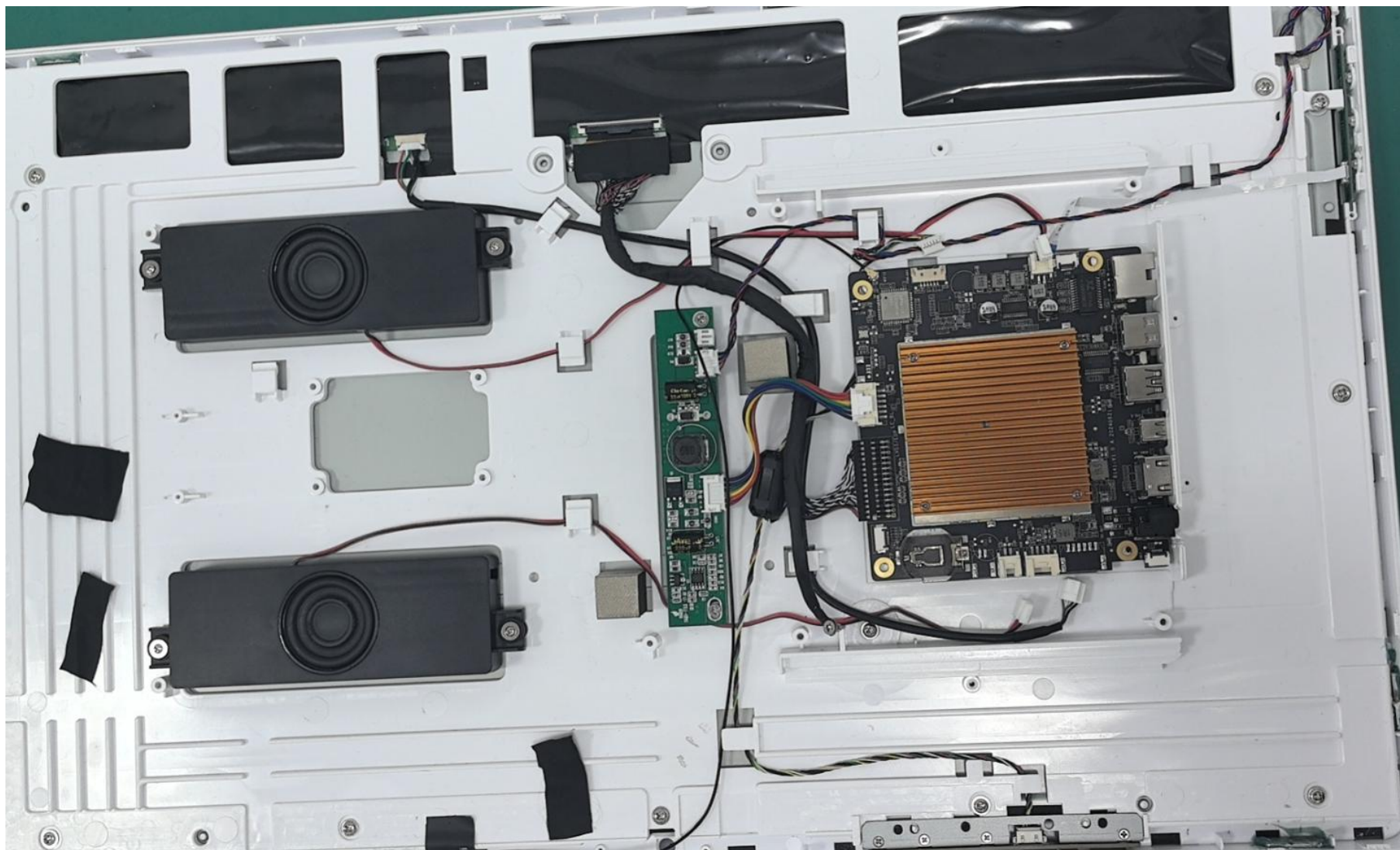
2.4 WIFI AUX Antenna Gain/Efficiency/3D DATA

2.5 WIFI active tes

2.6 Antenna size

3. Conclusions

1. Product Overview



1. Product Overview



Purpose

This report is to measure the performance of SLK for Master Antenna on亿莱顿. All measure data are showed below.

Content

1. Product Overview

2. Test Result

2.1 WIFI MAIN Antenna VSWR

2.2 WIFI MAIN Antenna Gain/Efficiency/3D DATA

2.3 WIFI AUX Antenna VSWR

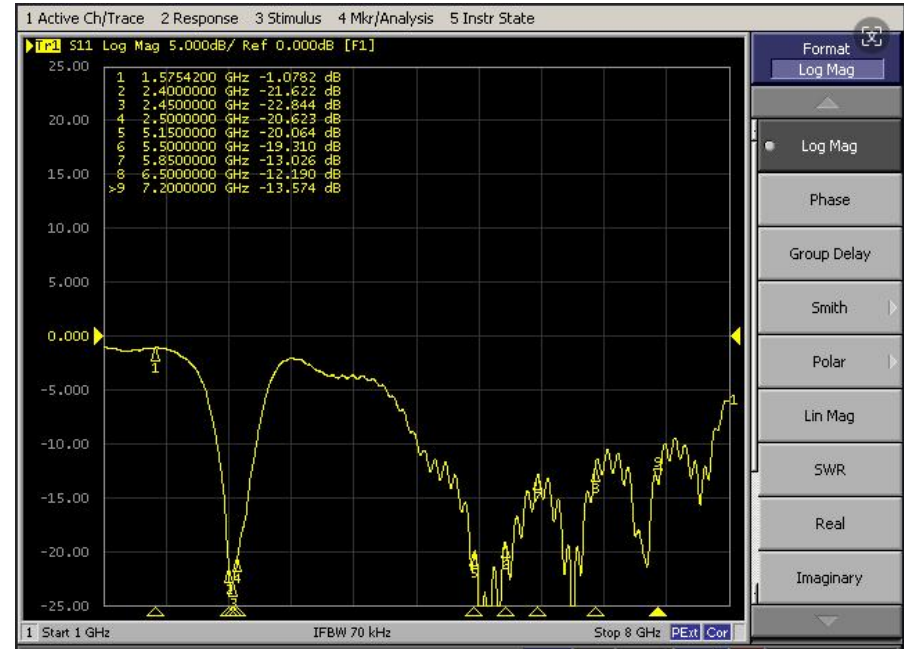
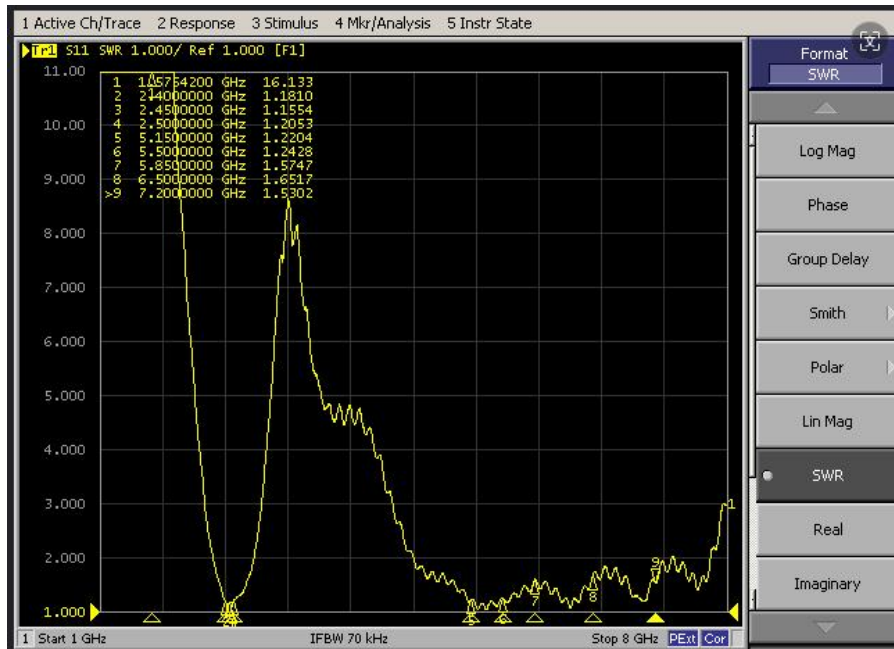
2.4 WIFI AUX Antenna Gain/Efficiency/3D DATA

2.5 WIFI active tes

3. Conclusions

2. Test Result

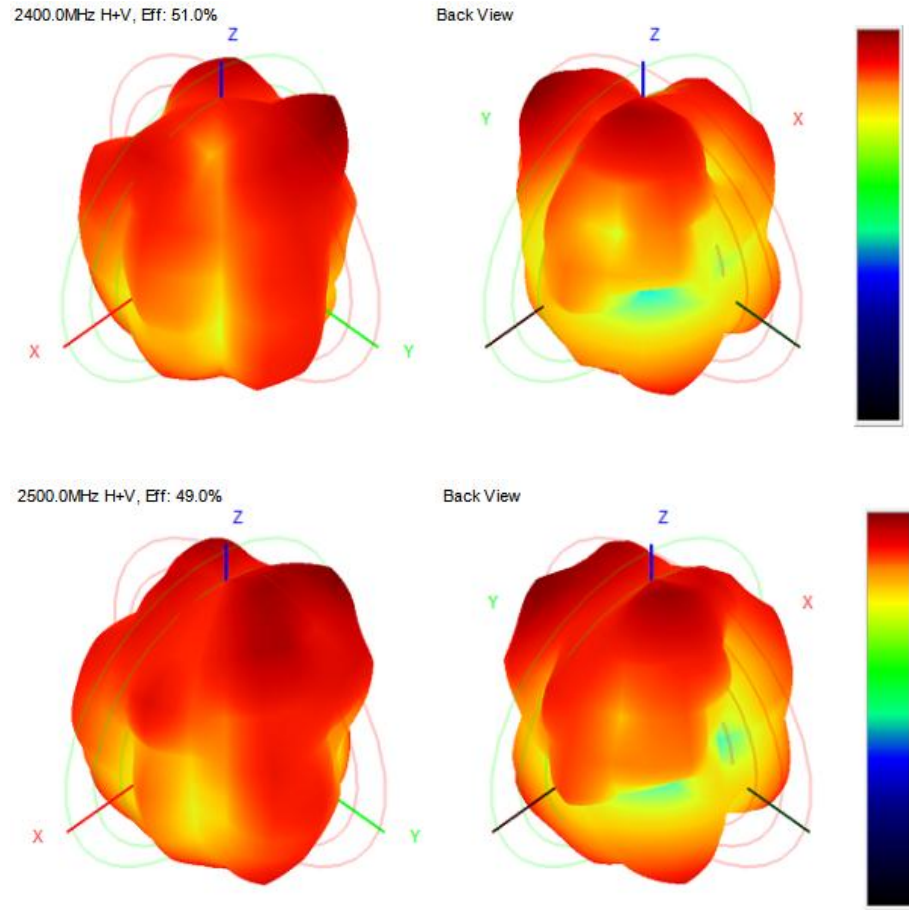
2.1 WIFI MAIN Antenna VSWR/S11



2. Test Result

2.2 WIFI MAIN Antenna Gain/Efficiency/3D DATA

Frequency (MHz)	Efficiency (dBi)	Gain (dBi)	Efficiency (%)
2400	-2.92	1.52	51.01
2410	-2.79	1.44	52.58
2420	-2.68	1.32	53.95
2430	-2.60	1.33	54.94
2440	-2.74	1.31	53.24
2450	-2.79	1.21	52.61
2460	-2.75	1.02	53.13
2470	-2.93	1.92	50.90
2480	-2.72	1.87	53.48
2490	-2.92	1.60	51.01
2500	-3.09	1.64	49.04
5150	-2.44	2.16	57.00
5450	-2.53	2.55	55.90
5550	-2.71	2.85	53.58
5850	-2.50	2.70	56.18
6050	-3.47	2.94	45.00
6450	-4.04	2.13	39.44
6750	-4.65	2.05	34.25
6950	-4.19	2.28	38.13
7150	-4.25	2.14	37.58

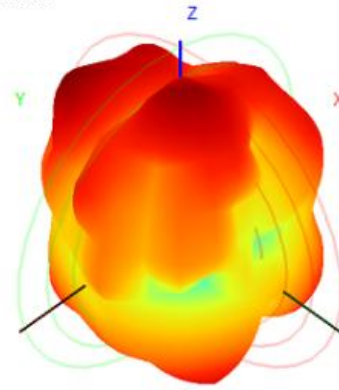
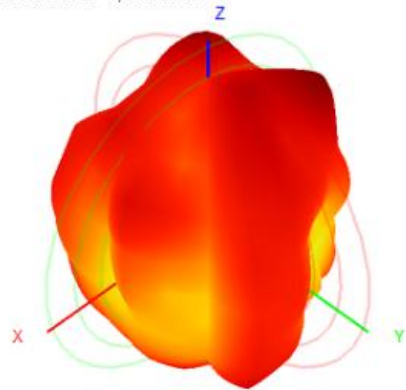


2. Test Result

2.2 WIFI MAIN Antenna Gain/Efficiency/3D DATA

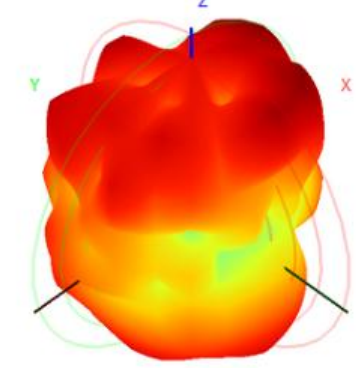
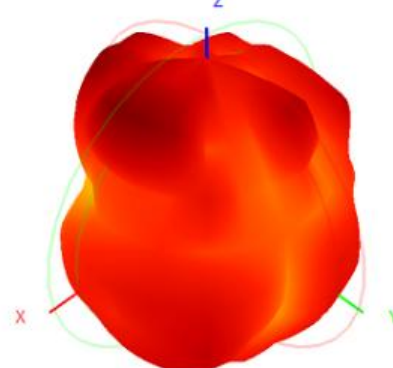
2450.0MHz H+V, Eff: 52.6%

Back View



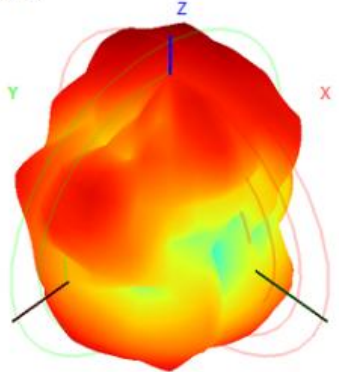
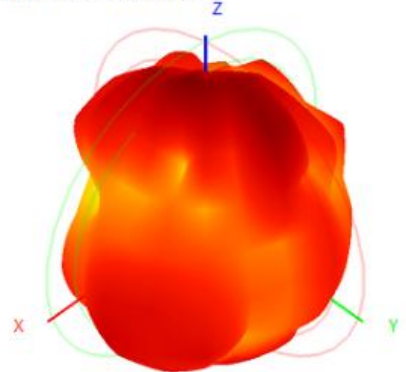
5150.0MHz H+V, Eff: 57.0%

Back View



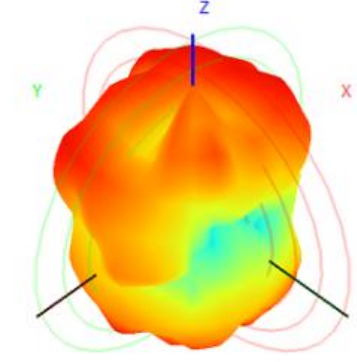
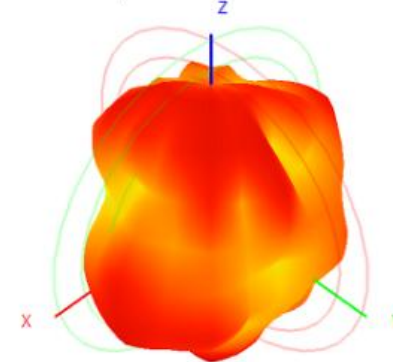
5550.0MHz H+V, Eff: 53.6%

Back View



5850.0MHz H+V, Eff: 56.2%

Back View

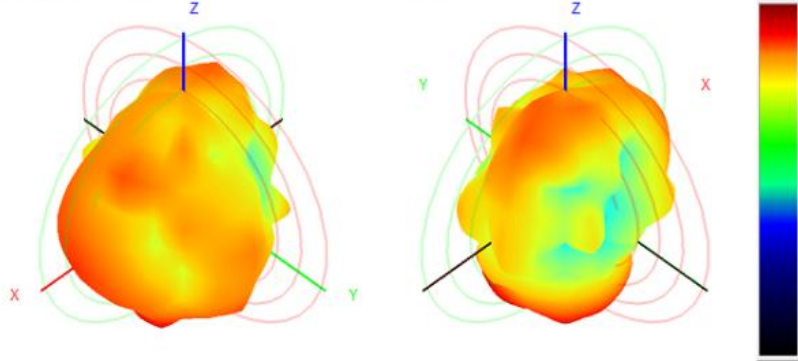


2. Test Result

2.2 WIFI MAIN Antenna Gain/Efficiency/3D DATA

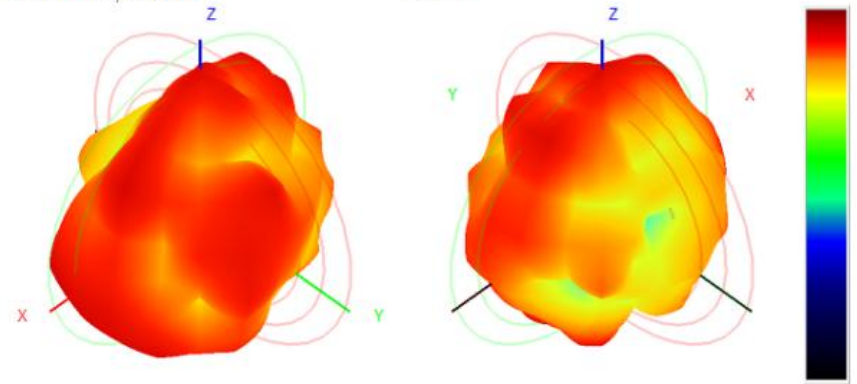
6050.0MHz H+V, Eff: 45.0%

Back View



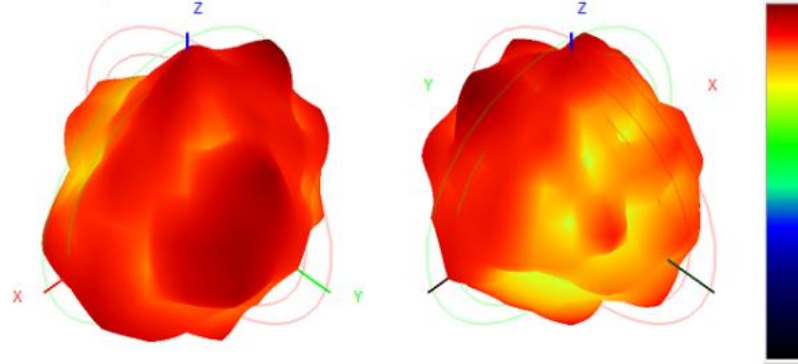
6450.0MHz H+V, Eff: 39.4%

Back View



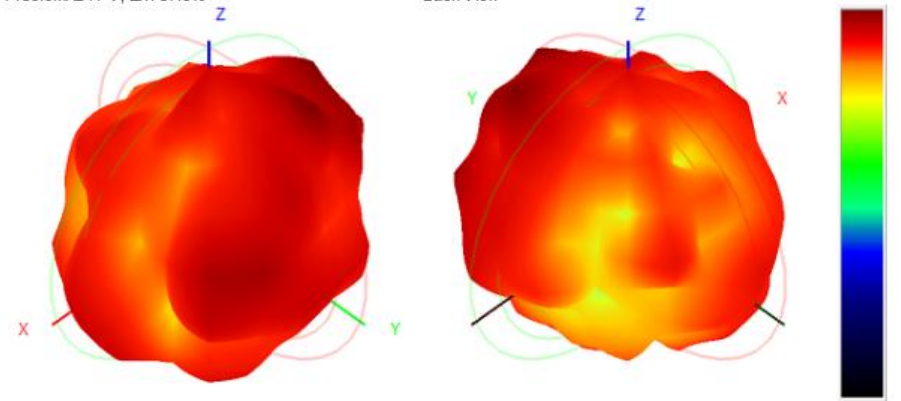
6750.0MHz H+V, Eff: 34.3%

Back View



7150.0MHz H+V, Eff: 37.6%

Back View



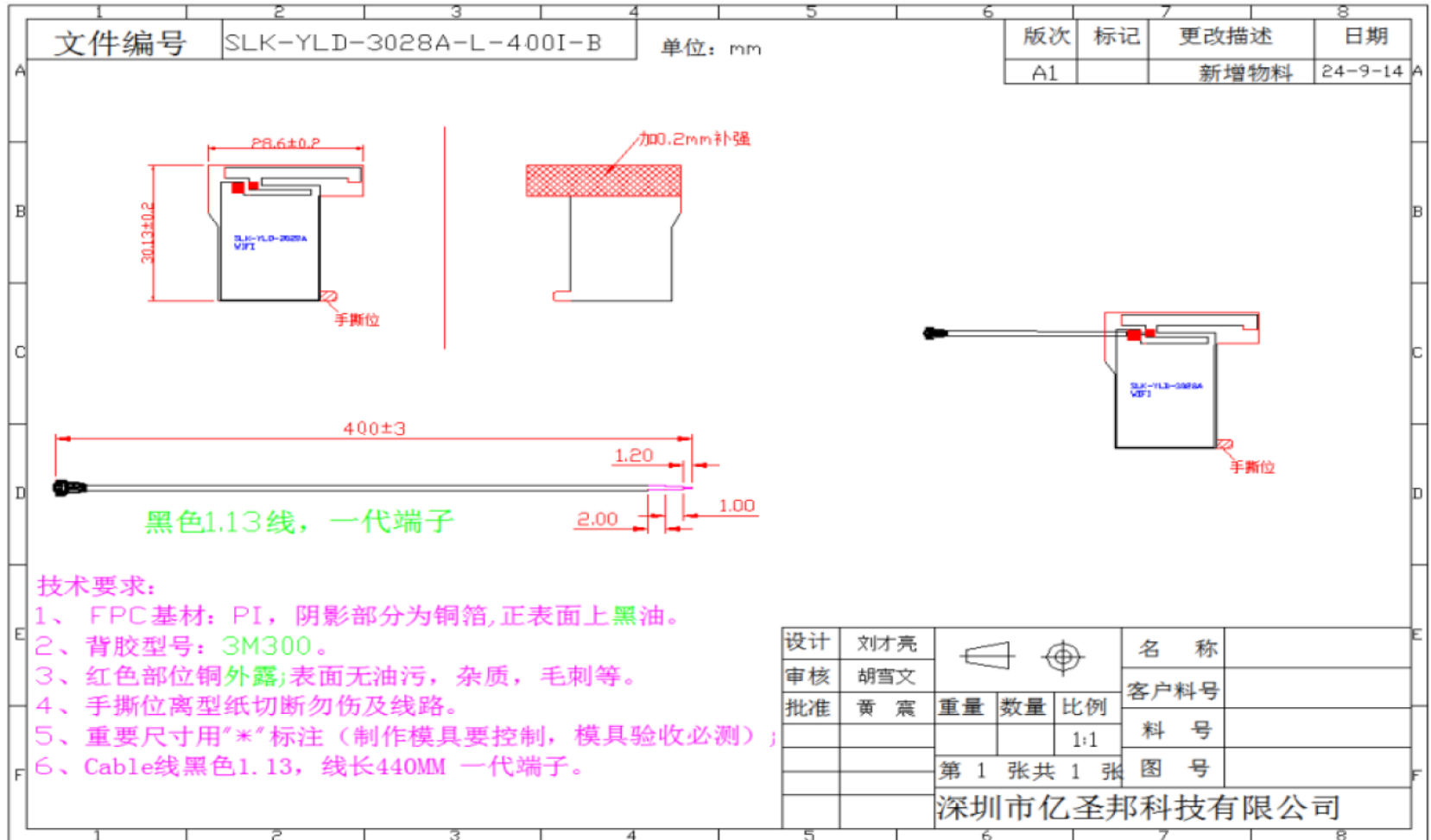
2. Test Result

2.3 WIFI active test

WIFI有源测试			
频段	1	6	11
B-TRP-11Mbps	12.51	13.05	13.40
B-TIS-11Mbps	-79.15	-80.22	-78.75
G-TRP-54Mbps	12.22	13.14	13.09
G-TIS-54Mbps	-68.33	-69.19	-68.46
N-TRP-MCS7	12.55	13.17	13.22
N-TIS-MCS7	-64.55	-65.12	-64.00
频段	36	149	165
A-TRP-54Mbps	12.44	12.52	12.73
A-TIS-54Mbps	-65.04	-66.35	-67.92

2. Test Result

2.4 Antenna size



3. Conclusions

谢谢！