

深圳市亿圣邦科技有限公司

Shenzhen Yishengbang Technology Co., Ltd.

深圳市宝安区西乡街道南昌社区深圳前湾硬科技产业园C栋101

101, Building C, Shenzhen Qianwan Hard Technology Industrial Park, Nanchang Community,
Xixiang Street, Bao'an District, Shenzhen, China

Antenna Test Report

Customer: 亿莱顿

Project: WF1589

WIFI : SLK-YLD-3028A1-L-220I-B

Product: WIFI Antenna—FPC

Report date: 2024.08.19

Prepared by : 范新竹

Checked by : Eason Huang

Approved by :

Purpose

This report is to measure the performance of SLK for Master Antenna on 亿莱顿. All measure data are showed below.

Content

1. Product Overview

2. Test Result

2.1 VSWR/S11

2.2 Antenna Parameters

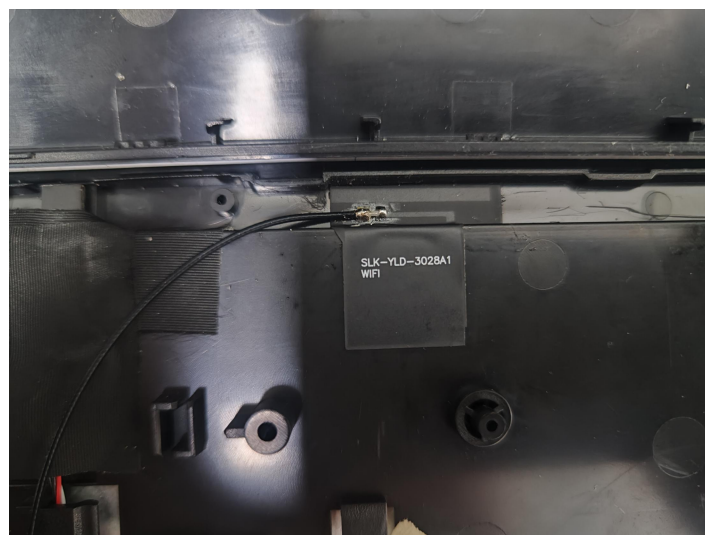
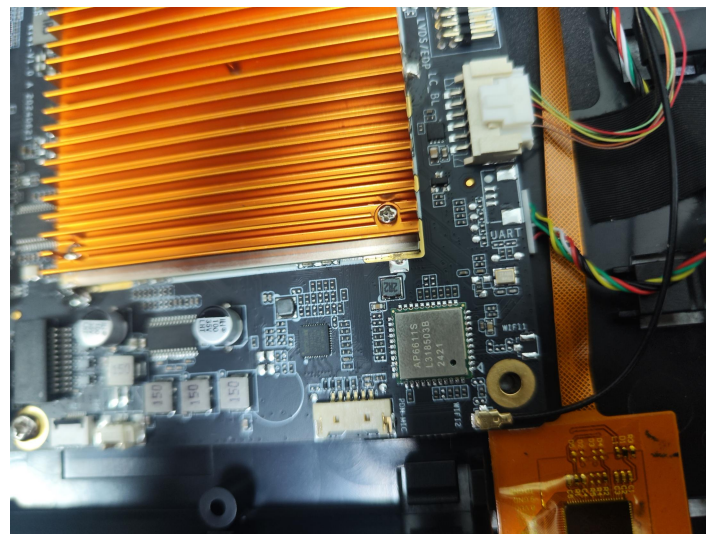
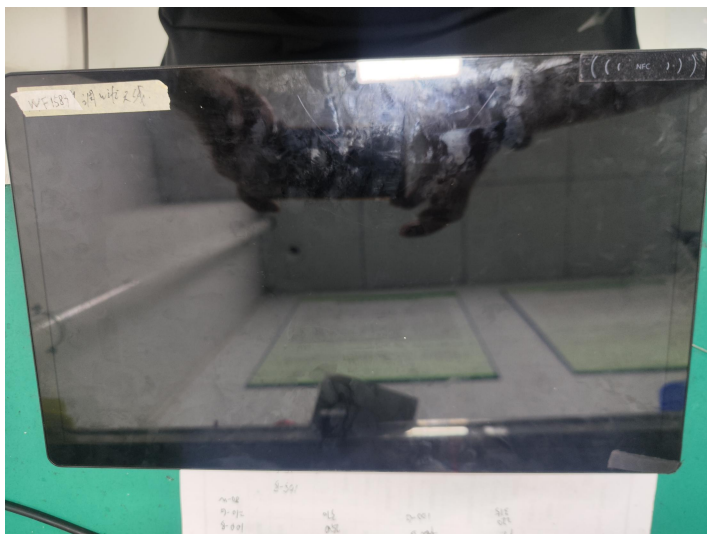
2.3 WIFI Antenna TRP/TIS

2.4 WIFI Antenna Gain/Efficiency/3D DATA

2.5 Antenna size

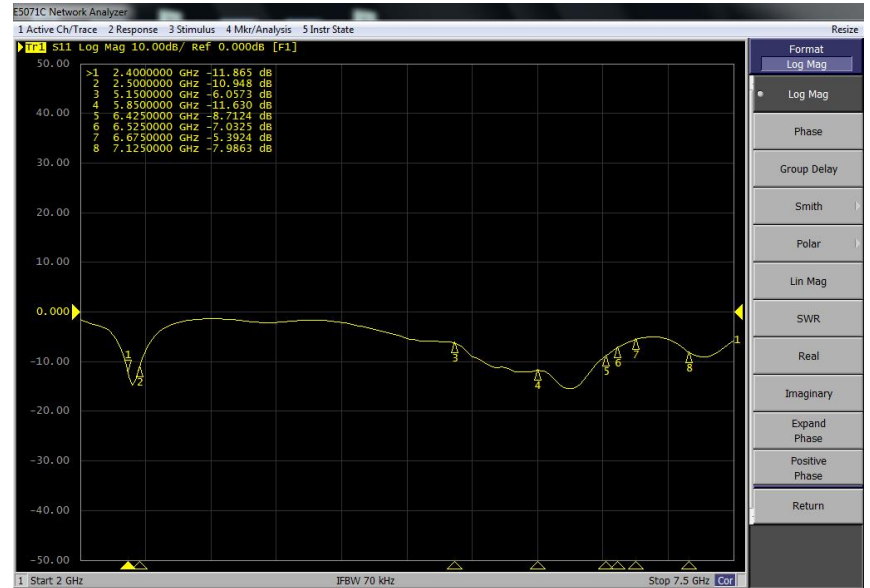
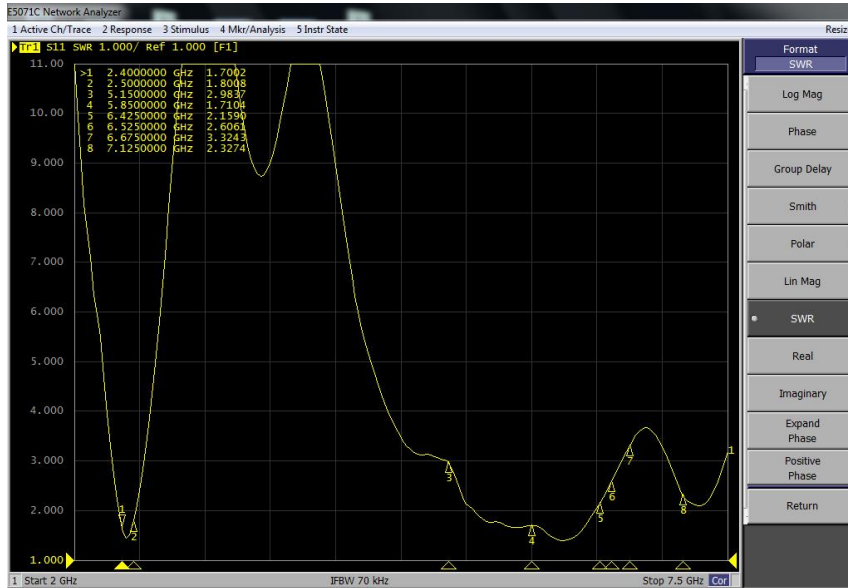
3. Conclusions

1. Product Overview



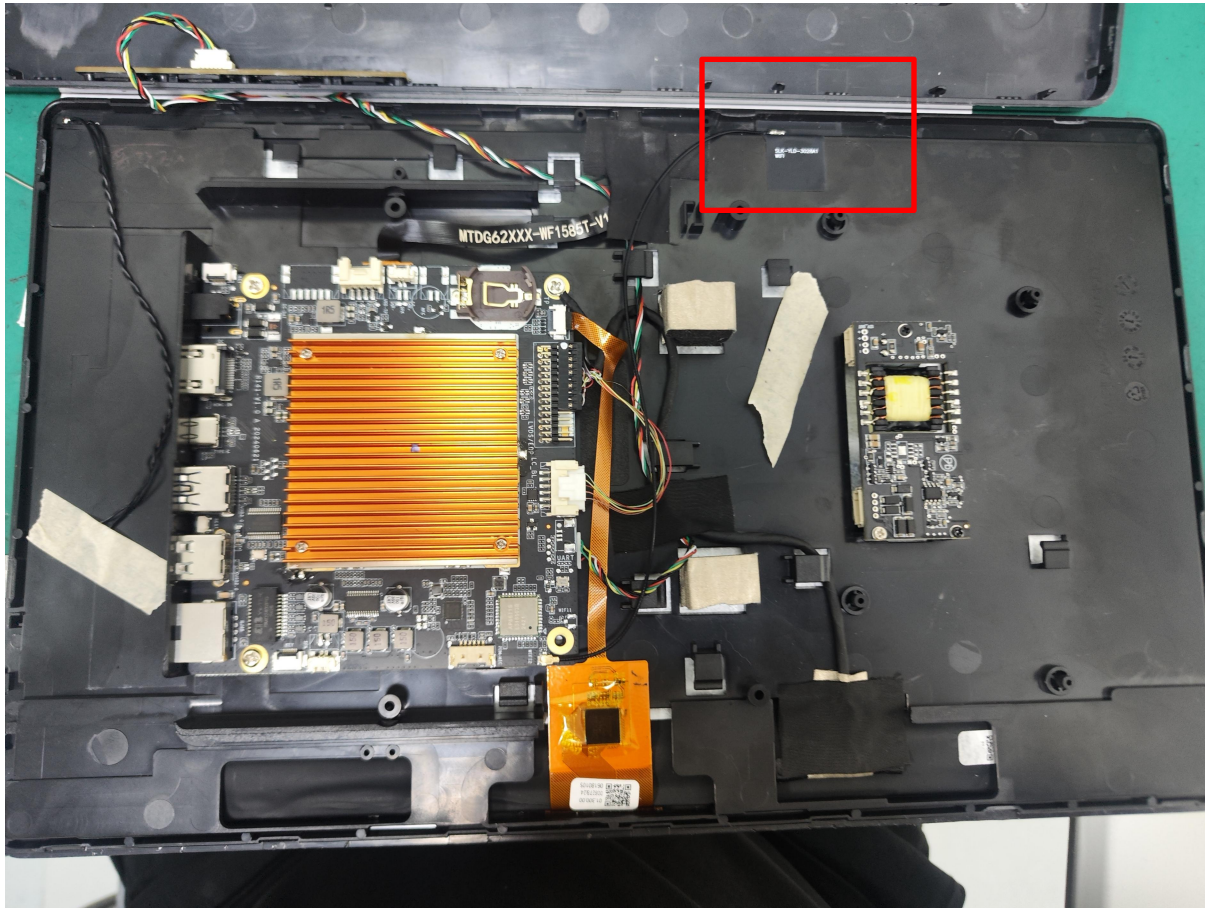
2. Test Result

2.1 VSWR/S11



2. Test Result

2.2 Antenna Parameters



2. Test Result

2.3 WIFI Antenna TRP/TIS

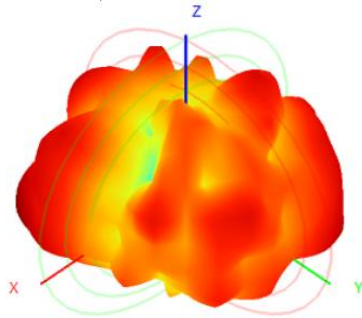
					WIFI	CH	功率 (54M)	灵敏度 (54M)	A级标准 值
					802.11g	1	14.75	-71.17	≥11 ≤-63
						6	15.4	-72.06	
						11	15.96	-72.56	
WIFI	CH	功率 (11M)	灵敏度 (11M)	A级标准 值	WIFI	CH	功率 (MCS7)	灵敏度 (MCS7)	A级标准 值
802.11b	1	13.75	-84.06	≥12 ≤-78	802.11n	1	14.82	-70.47	≥10 ≤-63
	6	14.5	-85.17			6	15.44	-71.46	
	11	14.16	-85.63			11	15.93	-71.77	

2. Test Result

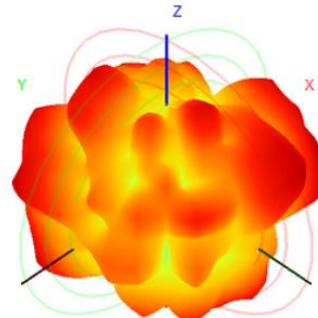
2.4 WIFI Antenna Gain/Efficiency/3D DATA

Frequency (MHz)	2400.0	2410.0	2420.0	2430.0	2440.0	2450.0	2460.0	2470.0	2480.0	2490.0	2500.0
Efficiency (dBi)	-2.97	-2.85	-2.79	-2.59	-2.56	-2.84	-2.87	-2.77	-2.69	-2.79	-2.63
Gain (dBi)	2.03	1.88	2.11	2.38	2.34	2.05	1.80	1.89	2.06	2.22	2.47
Efficiency (%)	50.43	51.83	52.56	54.97	55.35	51.88	51.56	52.83	53.77	52.51	54.55

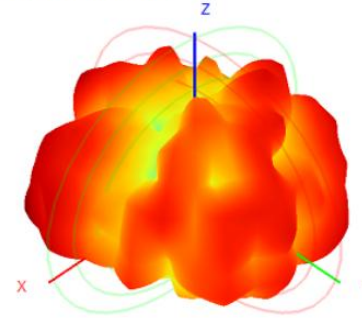
2400.0MHz H+V, Eff. 50.4%



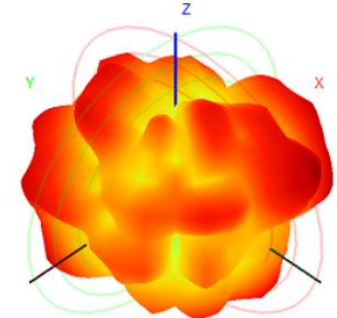
Back View



2450.0MHz H+V, Eff. 51.9%

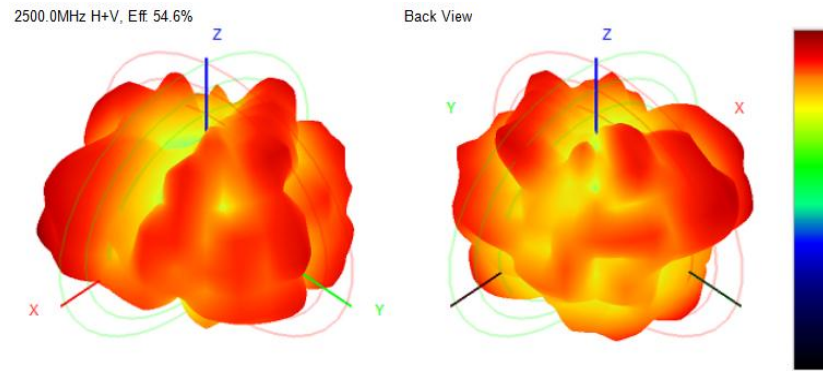


Back View



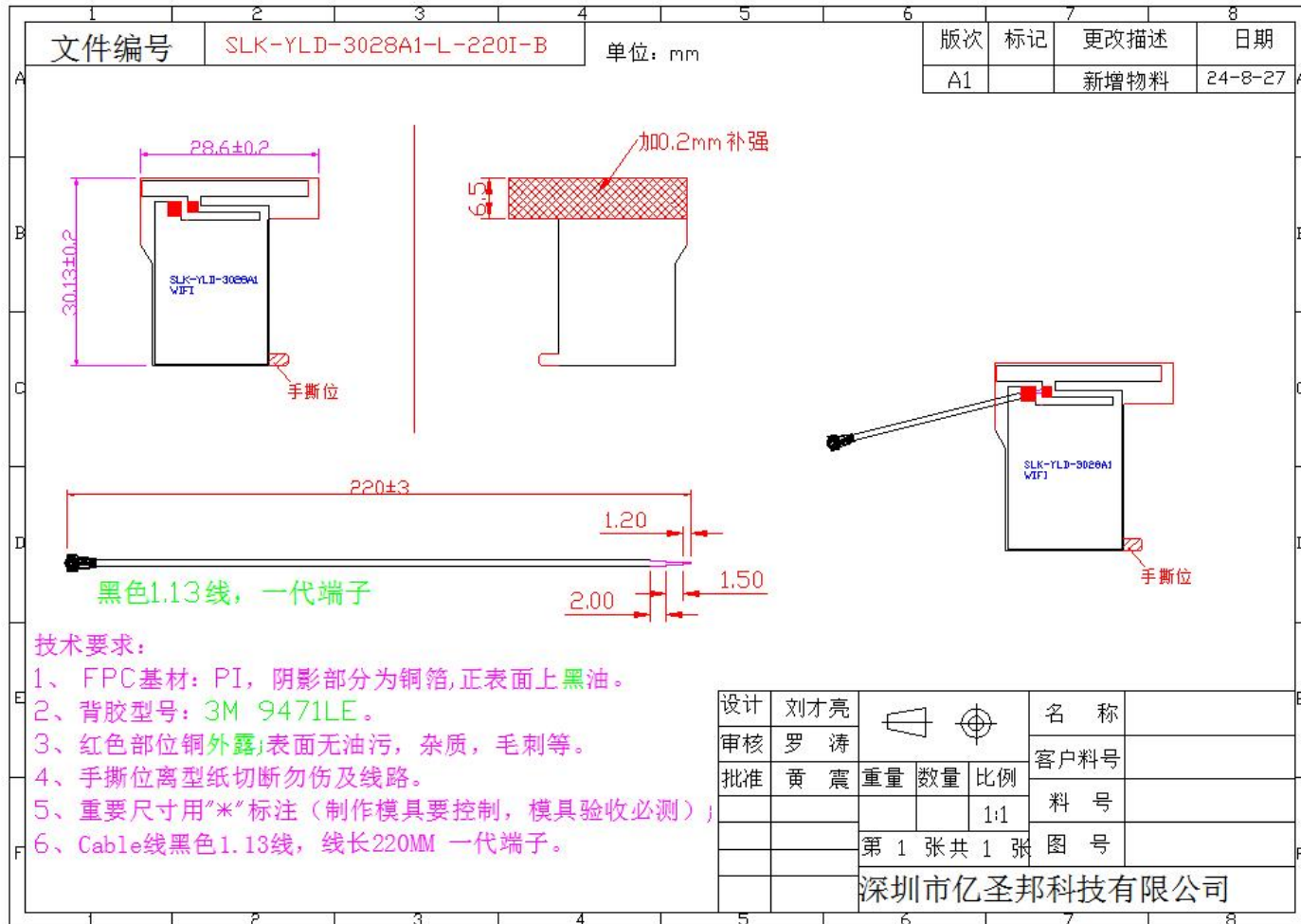
2. Test Result

2.4 WIFI Antenna Gain/Efficiency/3D DATA



2. Test Result

2.5 Antenna size





3. Conclusions

Thank you