

1. Wireless Link Internal Photos

The Wireless Link is made from the following components.

1. Lilly Enclosure (Solar Panel and Enclosure),
2. Mounting screws (x4),
3. Bracket screws (x2),
4. Mounting Bracket (Stainless Steel),
5. Mounting bolt and nut,
6. Whip antenna,
7. Antenna mount and cable,
8. Battery,
9. Protection board,
10. Power cable,
11. Main circuit board, and
12. SIM Card.

All these components can be seen in the following photograph.

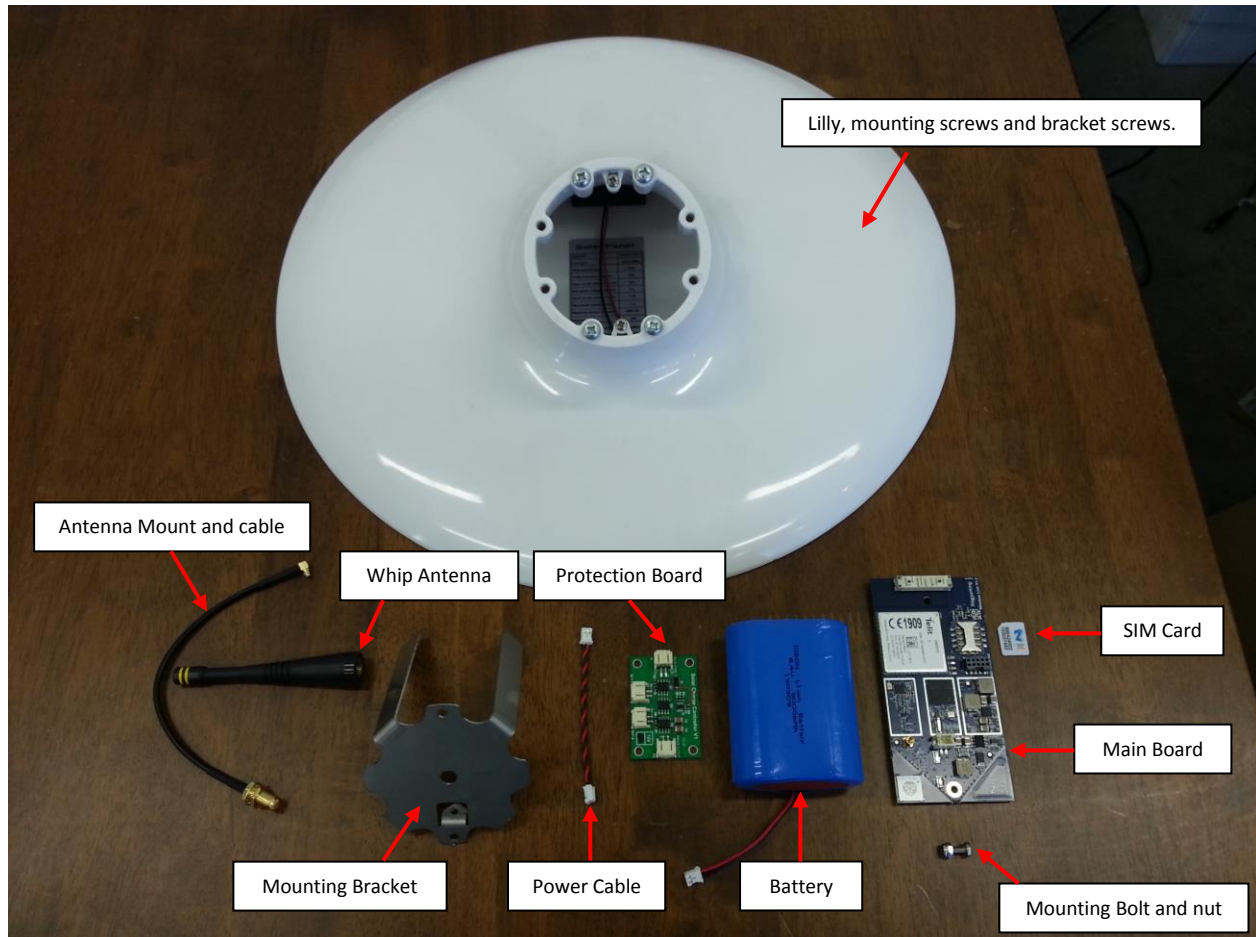


Figure 1 - Wireless Link Components

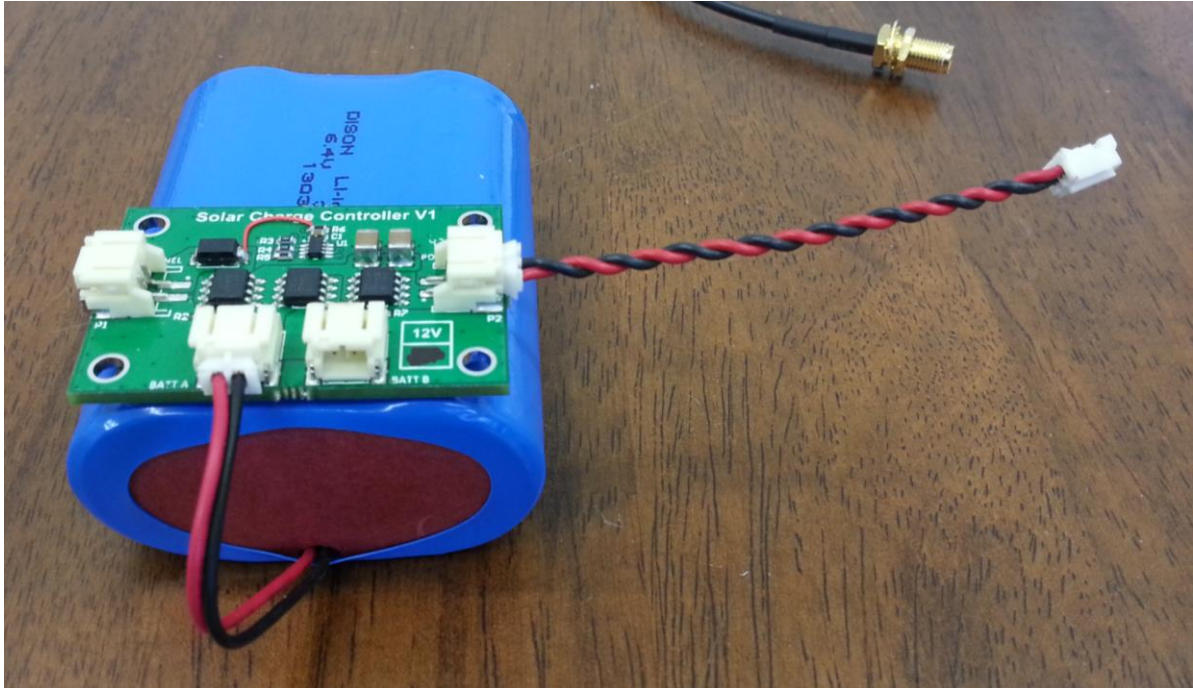


Figure 2 - Battery, Power Cable and Power Protection Board



Figure 3 - Main Board, Antenna, cable and mounting bracket

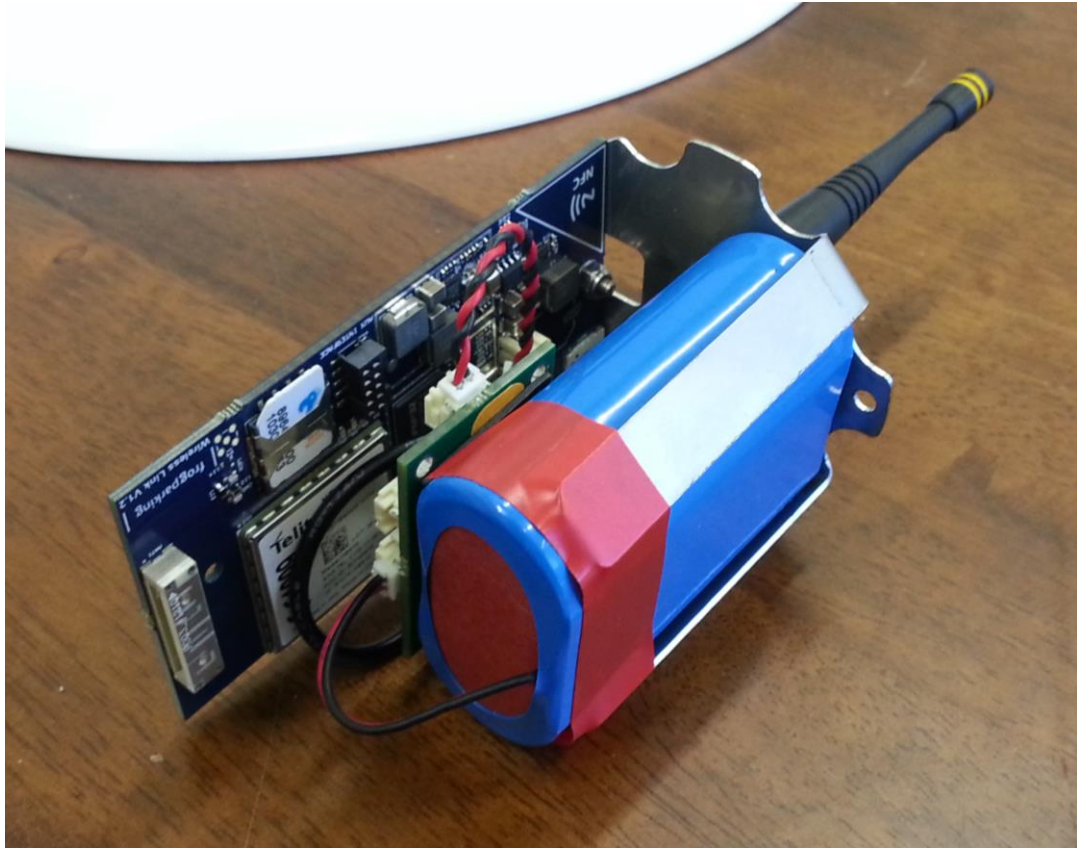


Figure 4 - Main Link Circuit assembled



Figure 5 - Main Link Circuit being inserting into Lilly



Figure 6 - Main Link Circuit Board (Component Side – Front)

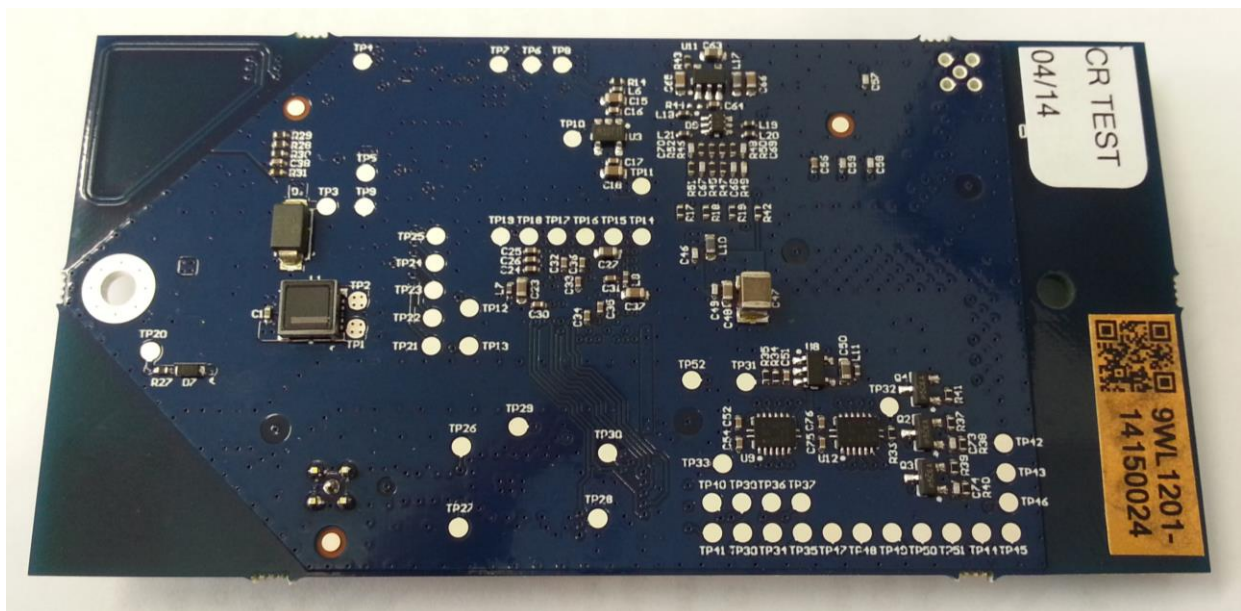


Figure 7 - Main Link Circuit Board (Component Side – Back)