









**FSP GROUP INC.**  
Switching Power Supply

MODEL NO (型号/型号): FSP250-50LC (交换式电源供应器/开关电源供应器)

AC INPUT 交流输入/交流输入	100-240V~, 4-2A, 60-50Hz				
DC OUTPUT 直流输出/直流输出	+3.3V	+5V	+12V	+5Vsb	-12V
	12.0A	14.0A	18.0A	2.5A	0.3A
Max Wattage 最大输出功率/最大输出功率	80W Max				
Total output continuous shall not exceed 总输出不可持续超过/总输出不可持续超过	250W				

Tested to Comply With FCC Standards

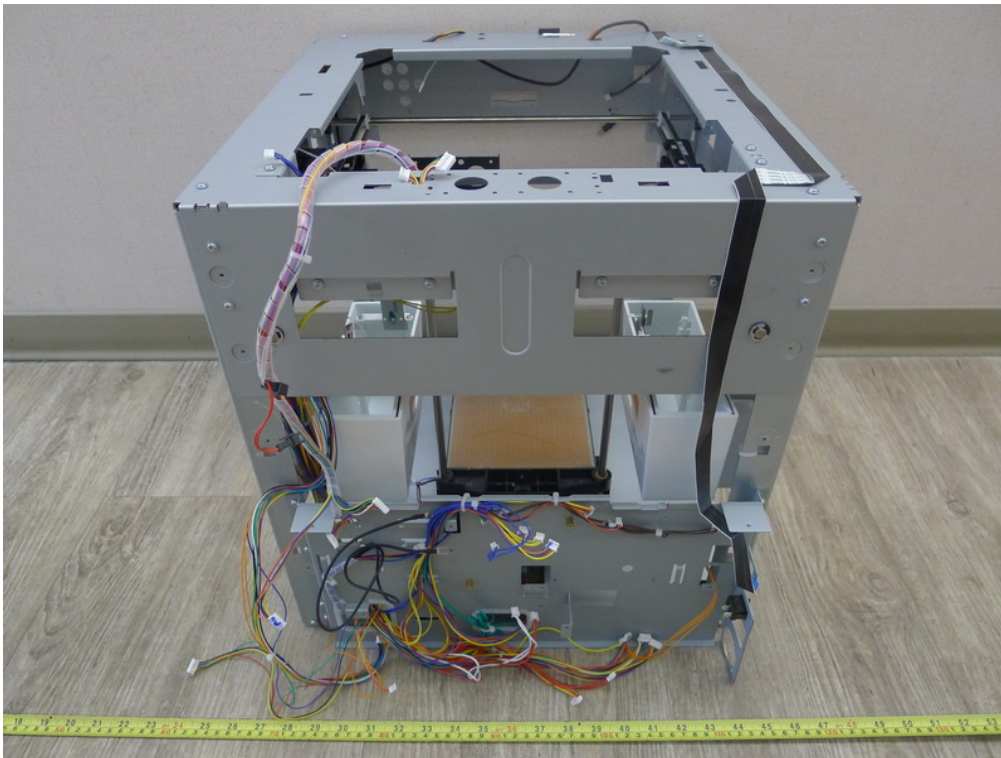
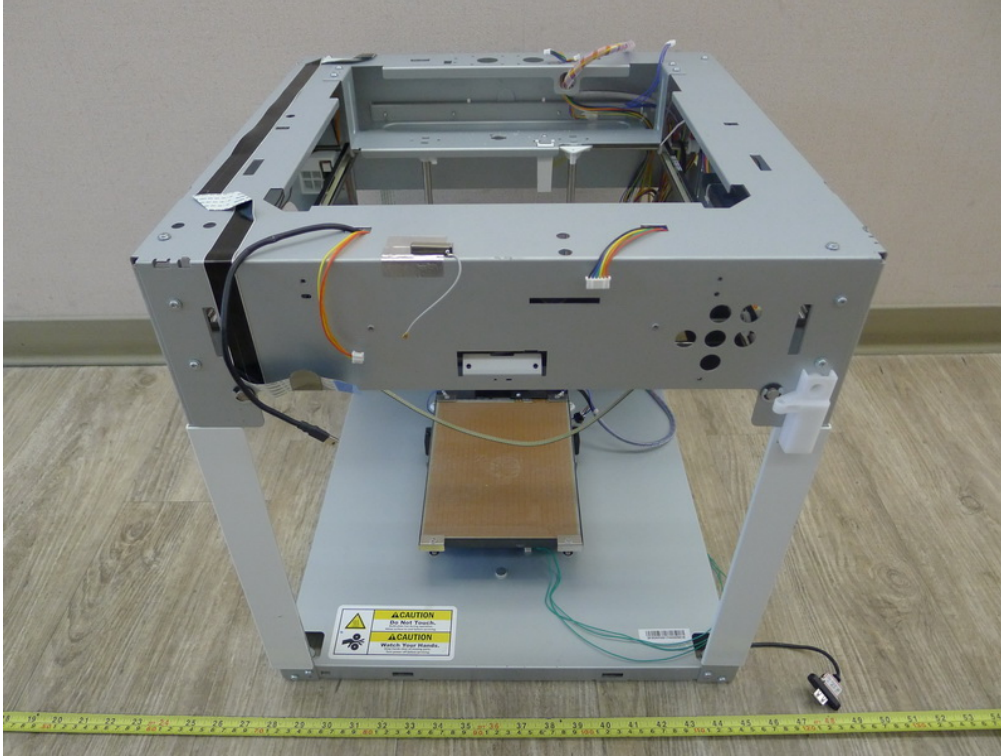
**警告! 请勿打开盒盖, 内有危险高压, 请送回代理商维修.**  
**WARNING! HAZARDOUS AREA**  
 SAFETY INSTRUCTIONS:  
 DO NOT REMOVE THE COVER  
 NO SERVICEABLE COMPONENTS INSIDE.  
 REFER SERVICING TO QUALIFIED SERVICE PERSONNEL.  
**WARNUNG! GEFÄHRENZONE**  
 SICHERHEITSHINWEISE:  
 VOR DEM ÖFFNEN DES GERÄTES NETZSTECKER ZIEHEN.  
 KEINE SERVICEBEWAHRTEN SAUENTEILE ENTHALTEN.  
 SERVICEARBEITEN SOLLTEN NUR VON AUTORISIERTEM FACHPERSONAL DURCHFÜHRT WERDEN.  
**警告! 请勿打开盒盖, 内有危险高压, 请送回代理商维修.**

制造商: 全汉企业股份有限公司  
 MADE IN CHINA 中国製造/中国制造  
 BALL BEARING FAN / Active PFC / RoHS  
 BLL\*\*\*\*\*GP

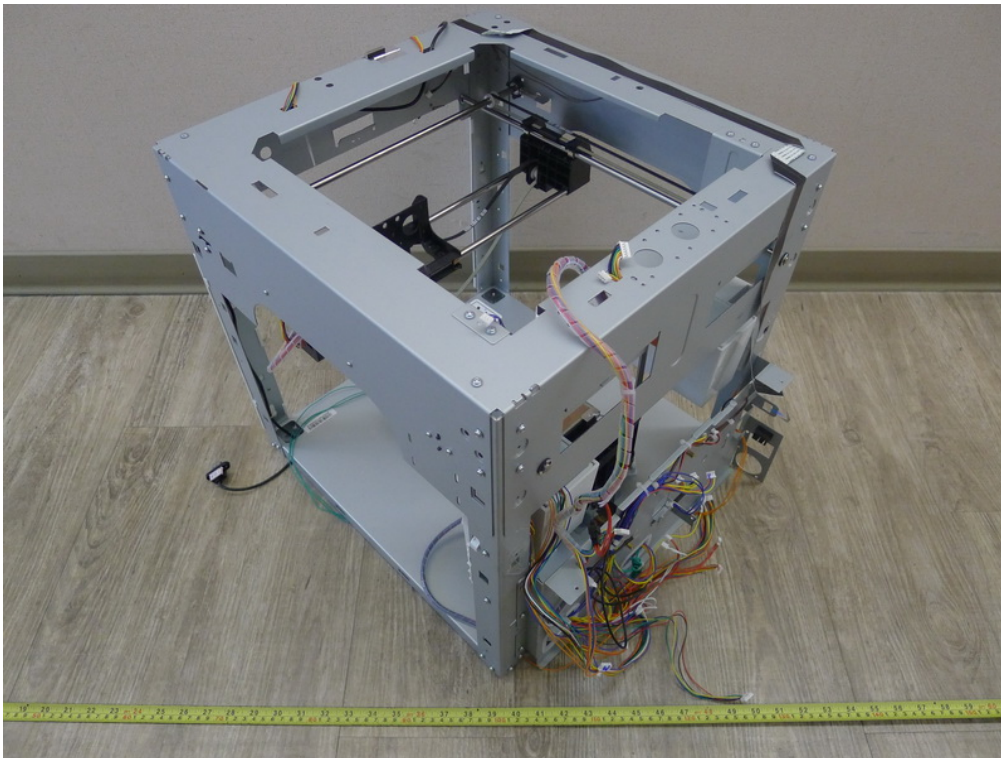
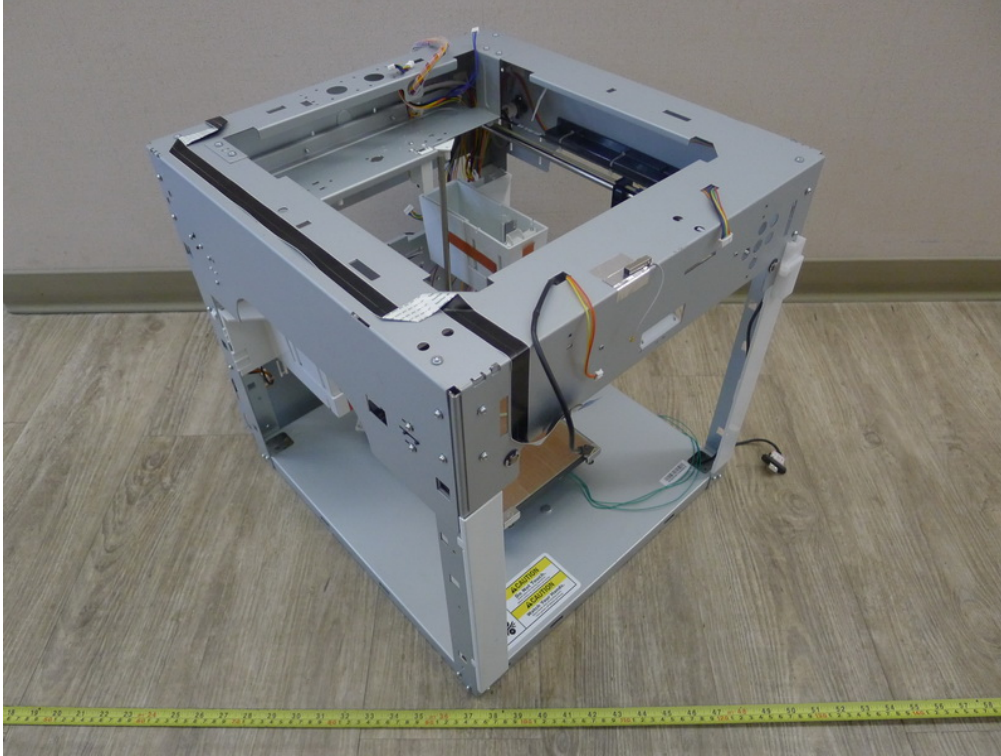


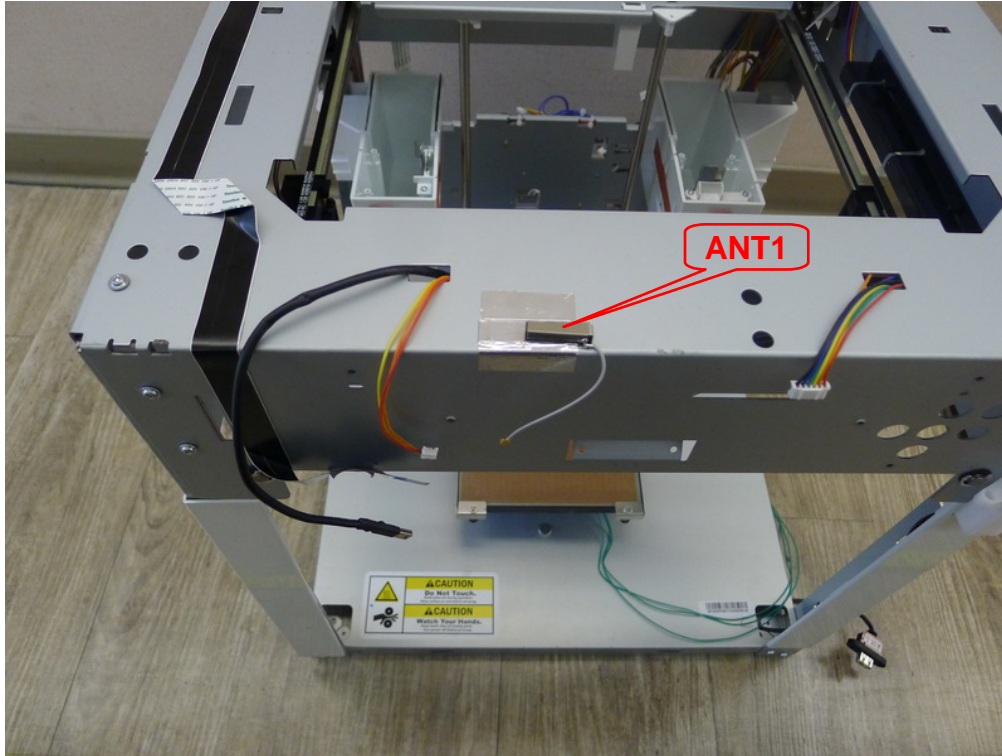








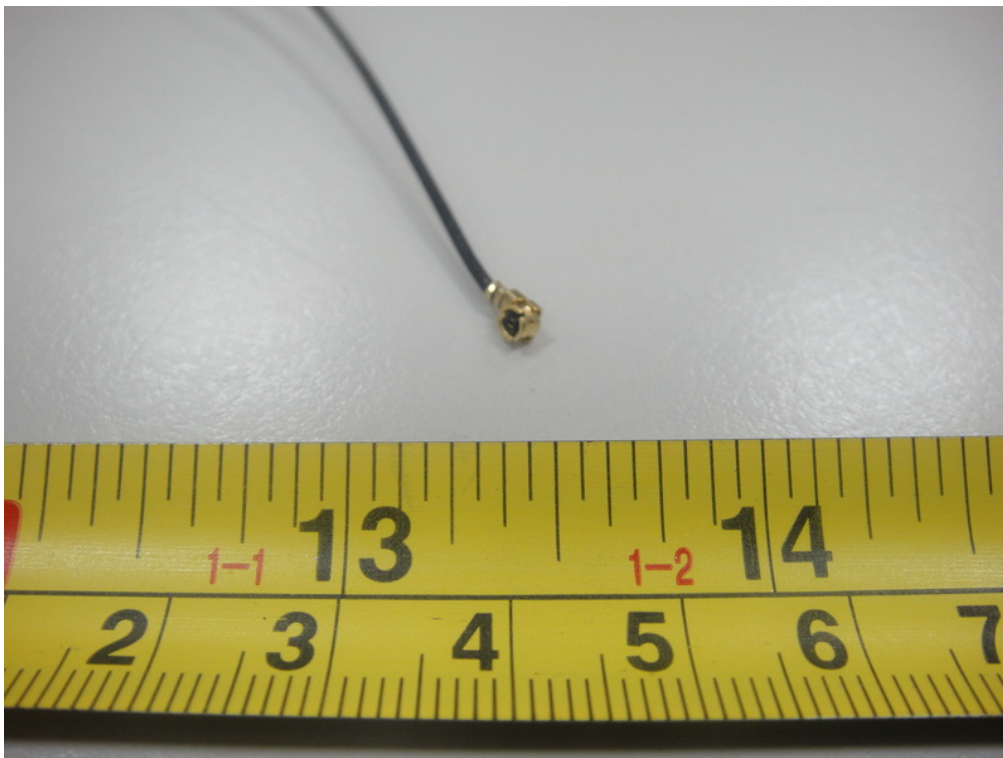
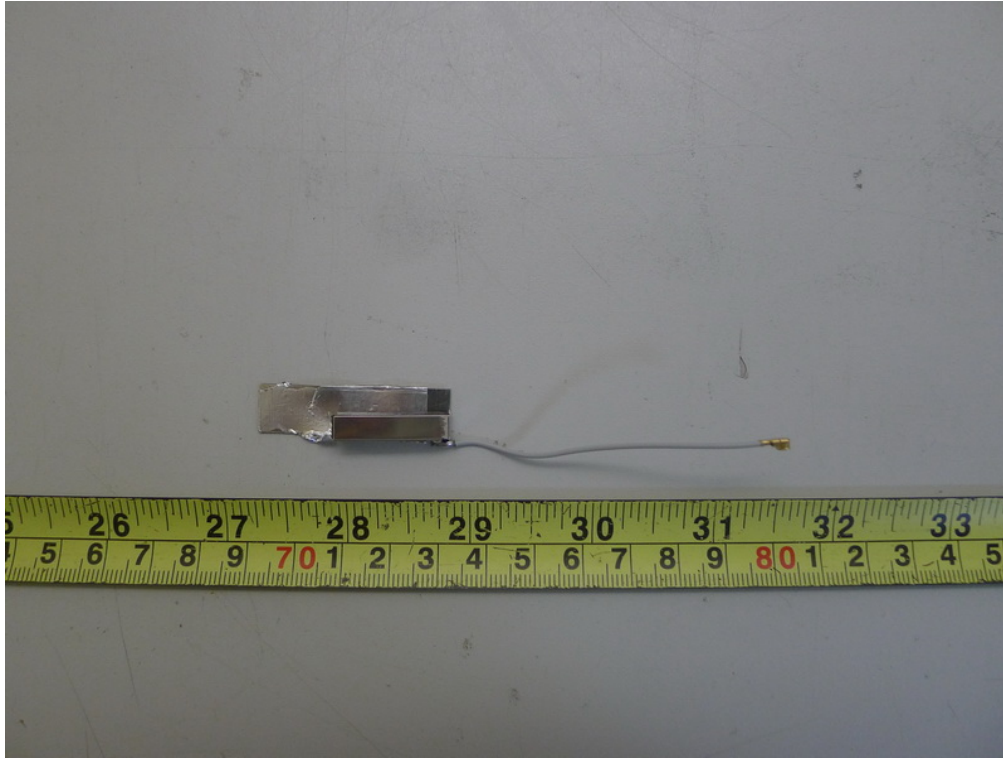




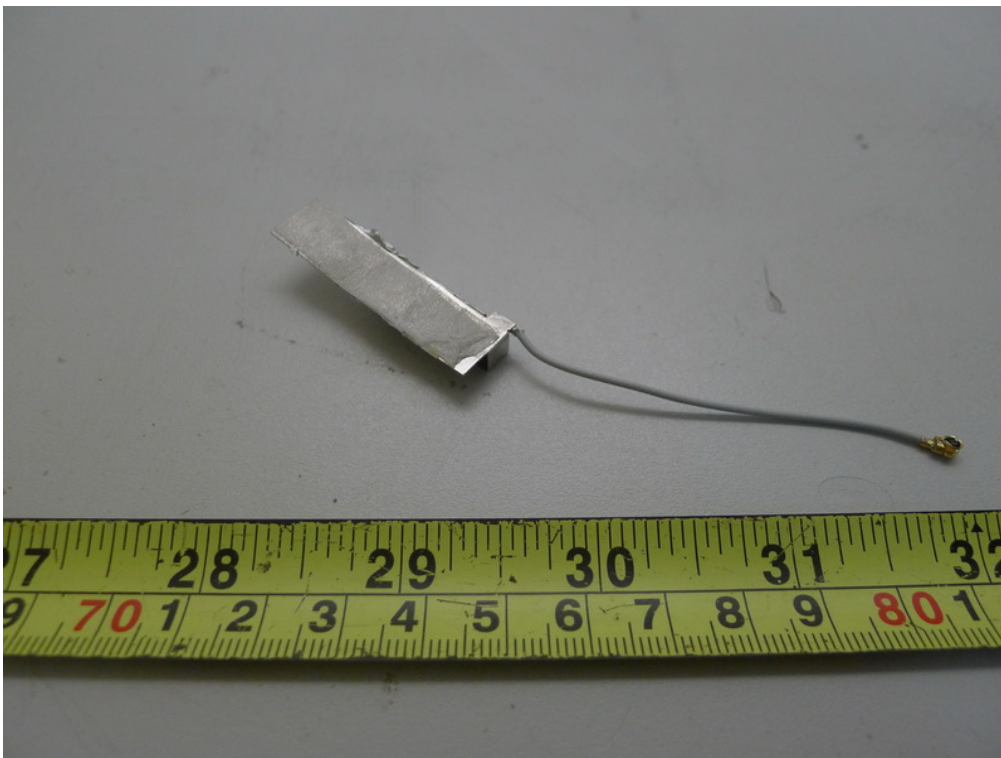
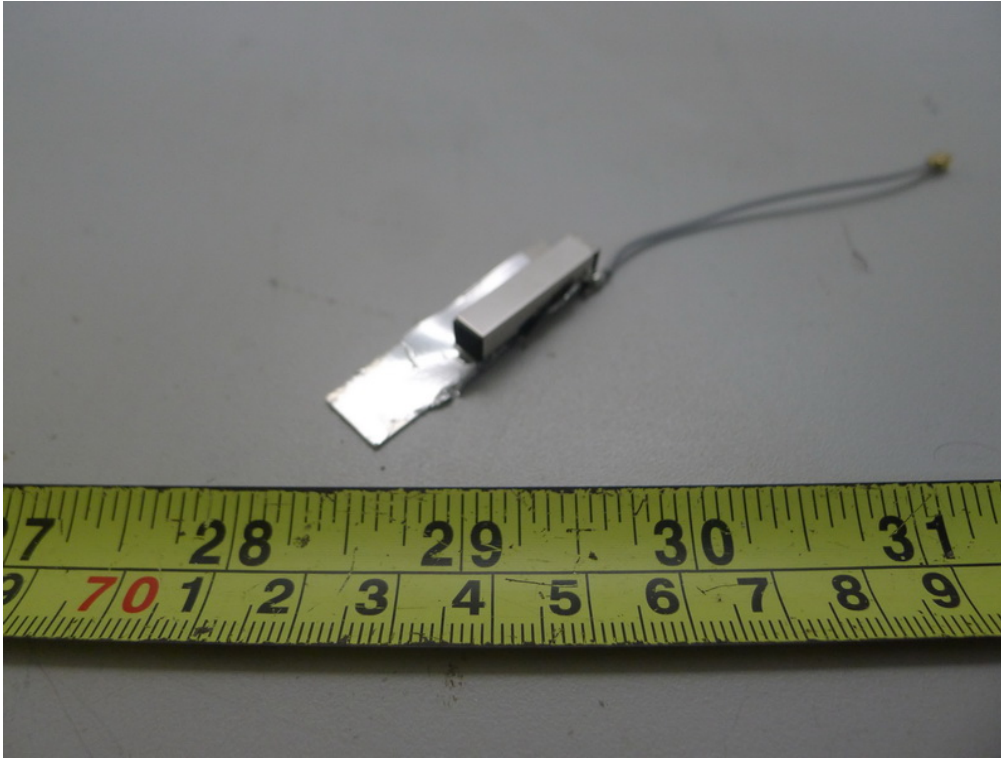




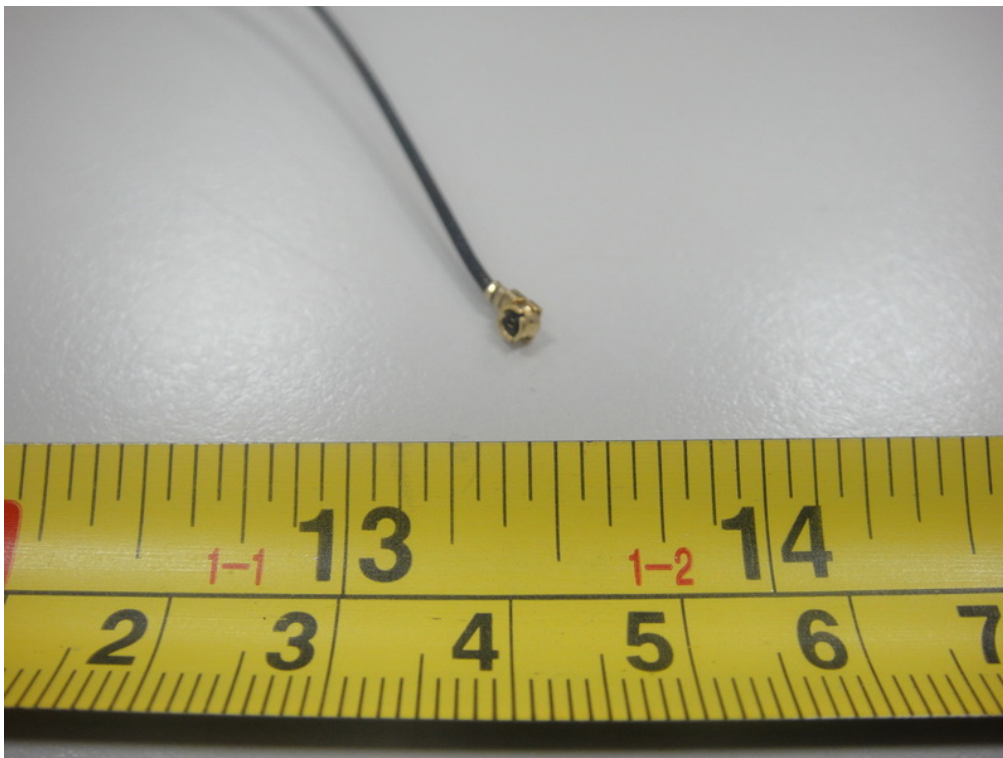
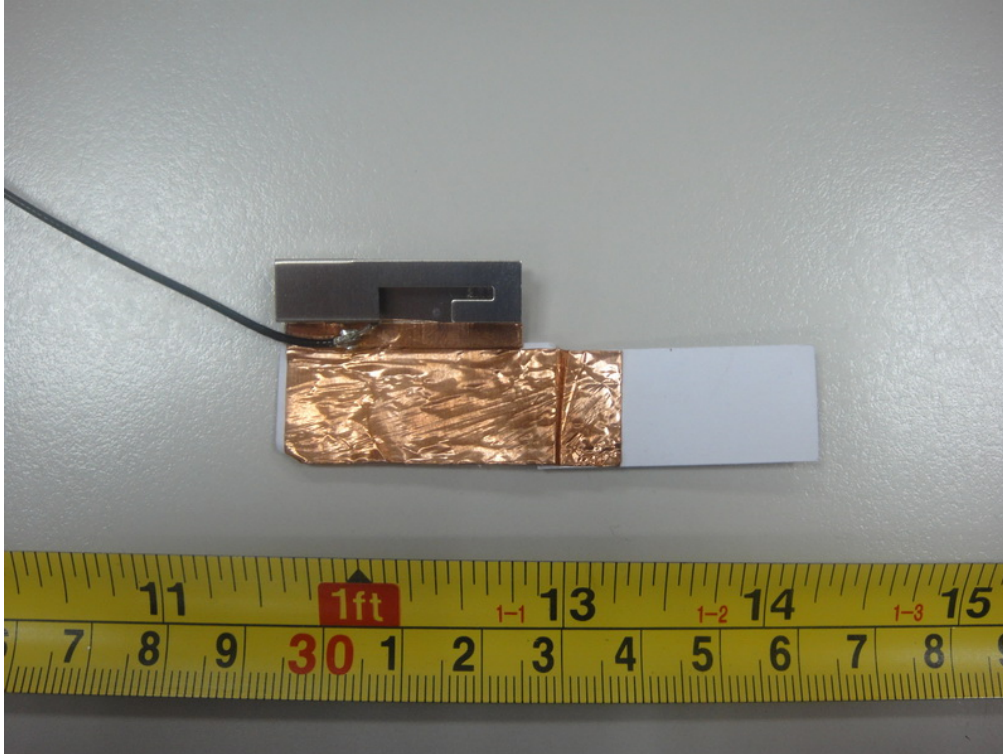
ANT1



ANT1



ANT2







ANT2

