

axpro[®]

A300

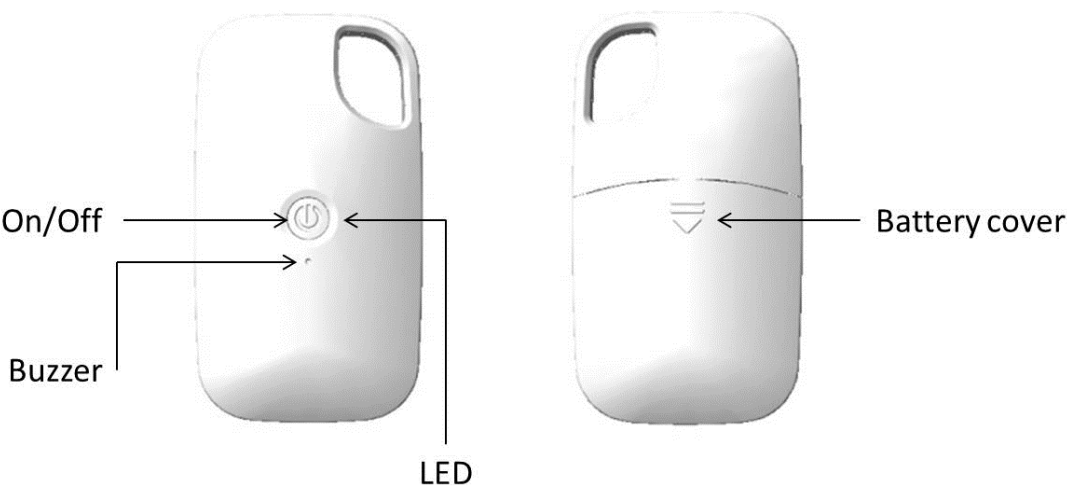
Lost and Found



User Manual

V1.2

at a Glance

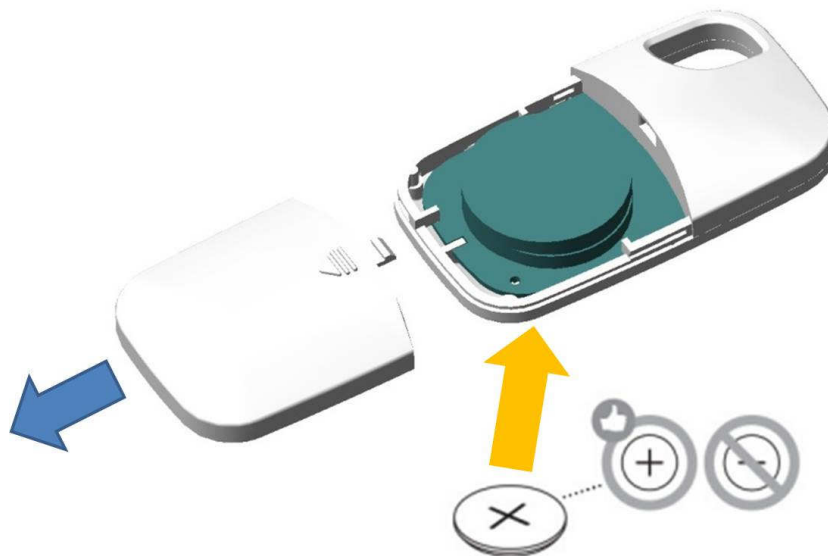


On/Off	<ul style="list-style-type: none">● Press and hold for 3 seconds to turn on the device, and it gives 2 short beeps.● Press and hold for 3 seconds to turn off the device, and it gives 1 long beep.
LED	The device will light up when some alerts are triggered.
Battery cover	Slide and open the battery compartment cover to replace the battery.

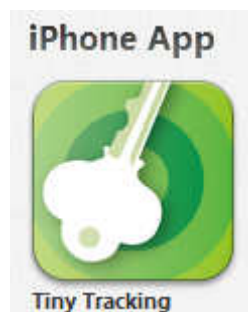
Getting Started

Setting up your Lost and Found

- Install the battery (CR2032)



- Download the App 『Tiny Tracking』 from the Apple App store.

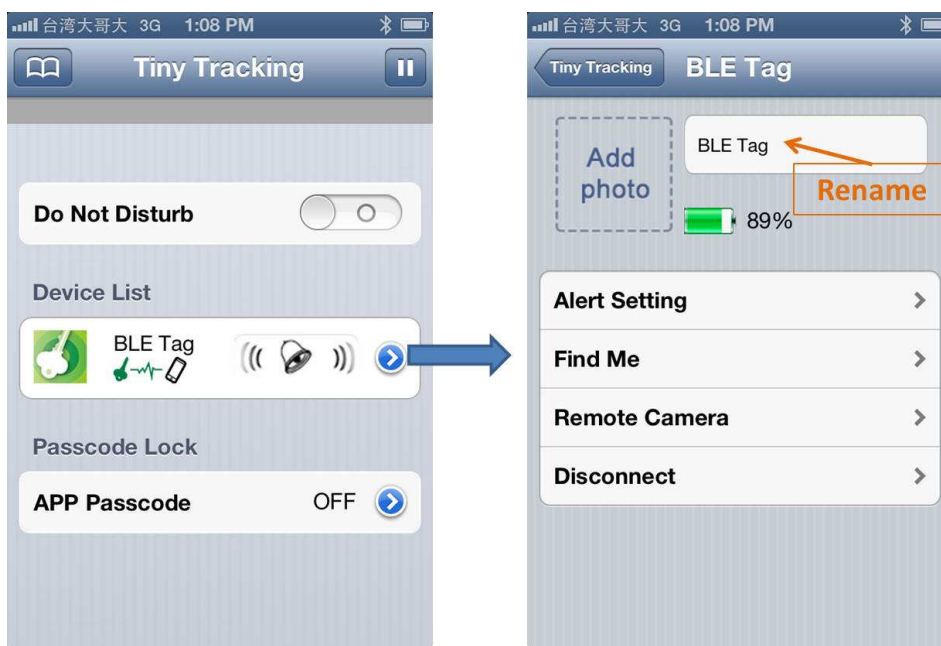


- Press the power button for 3 seconds to turn on the device, and it gives 2 short beeps.

Using your Lost and Found

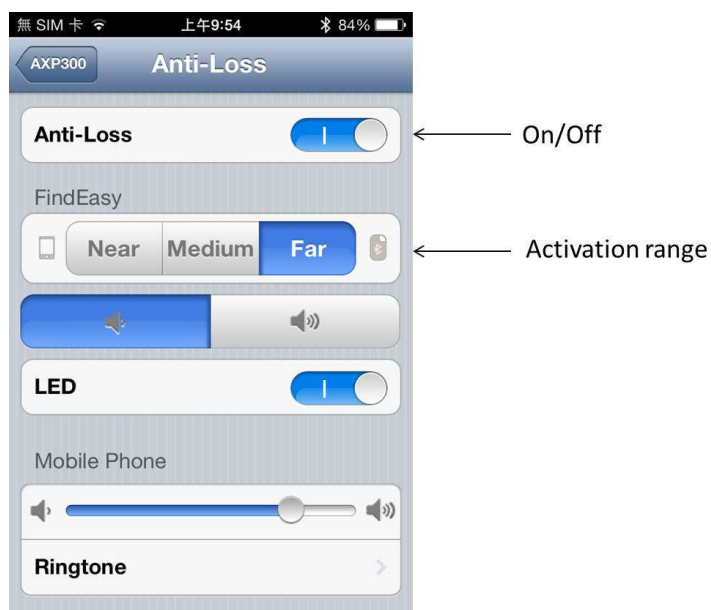
Sync your Lost and Found when you first receive it

- Install the battery and turn on the Lost-and-Found.
- Download the App from the Apple App store.
- Turn on Bluetooth connection on your smart device.
- Turn on the Tiny Tracking App and click (🔄) on the top right corner to sync your Lost-and-Found. Make sure the Lost-and-Found you wish to be synced is next to your smart device. Wait for approximately 10 to 20 seconds. The App will let you know when the new Lost-and-Found is detected.
- Press the connect icon (👉🔌📱), and then rename your Lost-and-Found if needed.
- You can link more than eight (8) Lost-and-Found devices to your smart device.



How to Anti loss your valuable things?

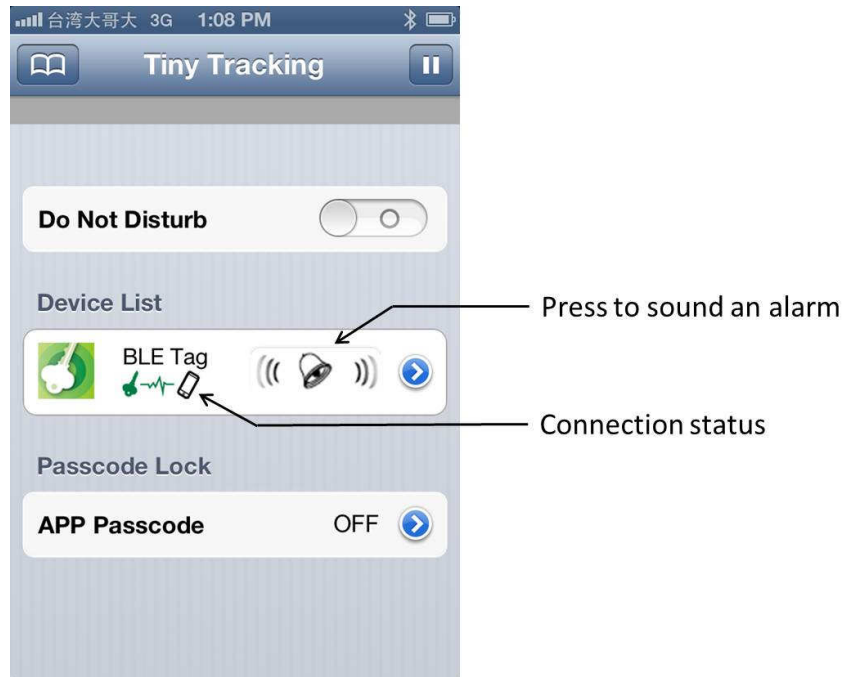
- Sync a Lost-and-found to the Tiny Tracking list, and rename it if needed.
- Stick or hand the Lost-and-Found onto anything you wish to track of.
- Turn on the Anti-Loss function, and set up the activation range.¹
- If the object you're tracking with Lost-and-Found moves beyond the range you choose, both your smart device and Lost-and-Found will light and sound an alarm.



¹ Electromagnetic waves and variations in surroundings and obstruction will alter the signal strength sent from the Lost-and-Found.

How to find a hidden belonging in activation range?

- Chose the item you want to find out on the Tiny Tracking list.
- Make sure the connection state of the item is “In Range”.
- Press the “Alert” button of the item, and the corresponding device will sound an alarm.



Connection Status



Connecting device

Device was disconnected

Device is in range

Device is out of range

Dimension



Specification

Wireless Technology	BLE 4.0
Replaceable Battery	CR2032 Lithium Coin Battery
Battery Life	Up to 6 months
Compatibility	For iPhone 4S/5/5C/5S and later
Weight	10 g (approx.)



FEDERAL COMMUNICATIONS COMMISSION INTERFERENCE STATEMENT

This equipment has been tested and found to comply with the limits for a Class B digital device, pursuant to part 15 of the FCC Rules. These limits are designed to provide reasonable protection against harmful interference in a residential installation. This equipment generates, uses and can radiate radio frequency energy and, if not installed and used in accordance with the instructions, may cause harmful interference to radio communications. However, there is no guarantee that interference will not occur in a particular installation. If this equipment does cause harmful interference to radio or television reception, which can be determined by turning the equipment off and on, the user is encouraged to try to correct the interference by one or more of the following measures:

- Reorient or relocate the receiving antenna.
- Increase the separation between the equipment and receiver.
- Connect the equipment into an outlet on a circuit different from that to which the receiver is connected.
- Consult the dealer or an experienced radio/ TV technician for help.

CAUTION:

Any changes or modifications not expressly approved by the grantee of this device could void the user's authority to operate the equipment.

This device complies with Part 15 of the FCC Rules. Operation is subject to the following two conditions: (1) this device may not cause harmful interference, and (2) this device must accept any interference received, including interference that may cause undesired operation.

RF Exposure Warning

This equipment must be installed and operated in accordance with provided instructions and the antenna(s) used for this transmitter must be installed to provide a separation distance of at least 20 cm from all persons and must not be co-located or operating in conjunction with any other antenna or transmitter. End-users and installers must be provide with antenna installation instructions and transmitter operating conditions for satisfying RF exposure compliance.