

Electric precision **SF-10**
OPTICAL FIBER CLEAVER

2020/09



Electric precision **SF-10**
OPTICAL FIBER CLEAVER

U S E R ' S M A N U A L



CATALOGUE

Warnings and Precautions	01
Basic Information	02
Appearance	03
Operation instructions	05
Maintenance	12
Common problems and solutions	15

FCC STATEMENT :

This device complies with Part 15 of the FCC Rules. Operation is subject to the following two conditions:

- (1) This device may not cause harmful interference, and
- (2) This device must accept any interference received, including interference that may cause undesired operation.

Warning: Changes or modifications not expressly approved by the party responsible for compliance could void the user's authority to operate the equipment.

NOTE: This equipment has been tested and found to comply with the limits for a Class B digital device, pursuant to Part 15 of the FCC Rules. These limits are designed to provide reasonable protection against harmful interference in a residential installation. This equipment generates uses and can radiate radio frequency energy and, if not installed and used in accordance with the instructions, may cause harmful interference to radiocommunications. However, there is no guarantee that interference will not occur in a particular installation. If this equipment does cause harmful interference to radio or television reception, which can be determined by turning the equipment off and on, the user is encouraged to try to correct the interference by one or more of the following measures:

Reorient or relocate the receiving antenna.

Increase the separation between the equipment and receiver. Connect the equipment into an outlet on a circuit different from that to which the receiver is connected.

Consult the dealer or an experienced radio/TV technician for help.

FCC Radiation Exposure Statement:

This equipment complies with FCC radiation exposure limits set forth for an uncontrolled environment. This equipment should be installed and operated with minimum distance 20cm between the radiator & your body.

Warnings and Precautions

Electric precision **SF-10** OPTICAL FIBER CLEAVER

Please read this manual carefully before operating the equipment. Follow all safety instructions and warnings contained in this manual.

Accessories list: Host :1 set/Miller stripper :1 piece /alcohol bottle :1 set/Instruction :1 copy/
Type-C charging cable :1 set

Warning: If this document is ignored, it may cause personal injury or damage to the equipment due to improper use. Safety glasses should always be worn during fiber preparation and cutting. If fiber fragments come into contact with the skin or eyes, there is a risk of personal injury.

Attention:

1. Do not disassemble or modify the fiber cleaver.
2. The fiber cleaver is designed for cutting glass fibers used in communications, do not attempt to cut any other material.
3. The cutting blade is very sharp, please do not touch it, otherwise it may cause personal injury.
4. Never expose the fiber cleaver to rain or moisture.

Electric precision **SF-10** OPTICAL FIBER CLEAVER

Basic Information

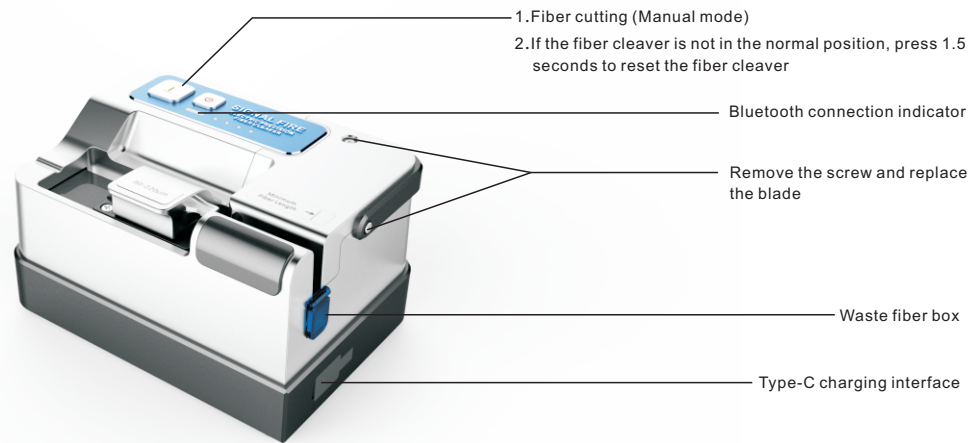
Bluetooth for wireless communication

The SF-10 carries out wireless communication through 2.4g Bluetooth, and the Bluetooth is automatically turned on when starting

Fiber type	single-mode/multi-mode fiber: Diameter: 80um-220um (rubber-covered wire, tail fiber, fiber optic cable)
Cut length	Bare fiber: 3-25mm/rubber-covered wire& tail fiber: 10-25mm
Cutting Angle	Mean < 0.5°
Bare machine size	122mmX87mmX67mm
Bare-metal weight	630g
charging voltage	DC5V/2A
Working environment	Temperature: -10 to 40°C / humidity: 0 to 95%

Appearance

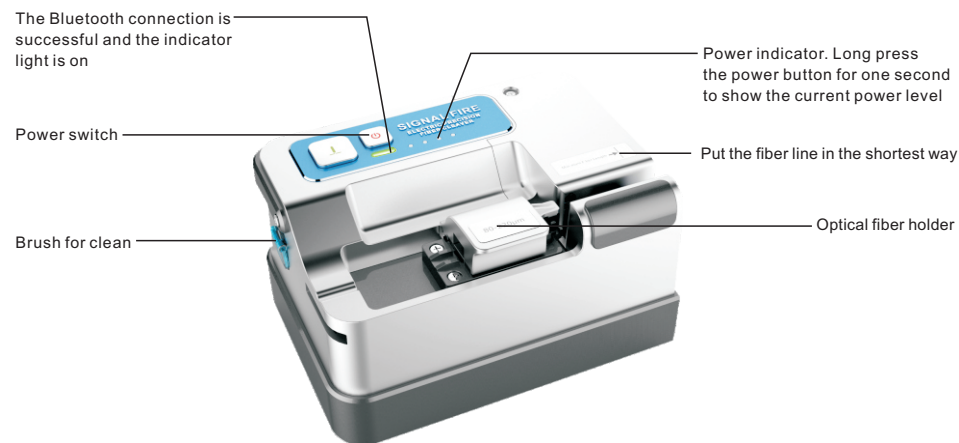
Electric precision SF-10 OPTICAL FIBER CLEAVER



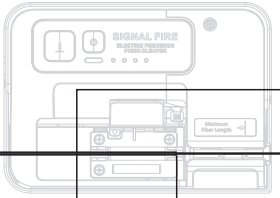
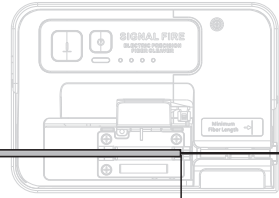
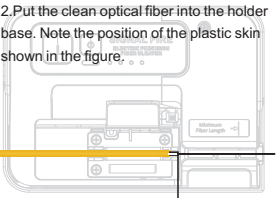
03

Electric precision SF-10 OPTICAL FIBER CLEAVER

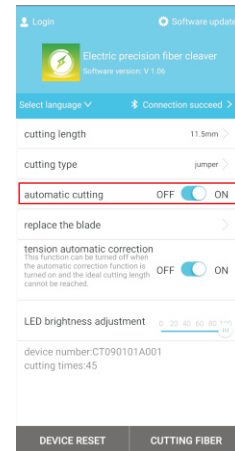
Appearance



04

Bare fiber	Rubber-covered Wire	Tail fiber
<p>1. Peel off the 28-33mm coating and wipe the fiber clean with alcohol.</p> <p>2. Put the clean fiber into the holder base and pay attention to the position of the coating layer.</p>  <p>The position of the stripped coated fiber is placed</p>	<p>1. Peel off 33-38mm of the outer plastic skin of the rubber-covered wire with stripping pliers, and then peel off 28-33mm of the optical fiber the coating is wiped with alcohol to clean the fiber.</p> <p>2. Put the clean optical fiber into the holder base. Note the position of the plastic skin shown in the figure</p>  <p>Rubber-covered Wire optical Fiber Placement Position</p>	<p>1. The outer plastic skin of the tail fiber is stripped off 33-38mm with Miller stripper, and the strengthened velvet is cut off with scissors. Then the middle plastic skin is stripped off 28-33mm with Miller stripper. Finally, the fiber coating of 28-33mm is stripped off with the smallest mouth of Miller stripper, and the fiber is wiped clean with alcohol.</p> <p>2. Put the clean optical fiber into the holder base. Note the position of the plastic skin shown in the figure.</p>  <p>Position of tail fiber</p>

3. Close the cover of the holder and the fiber cleaver will automatically cut (Automatic cutting function will be turned on by App default)



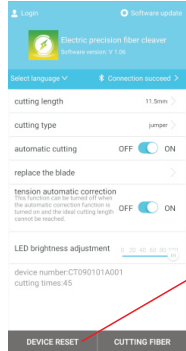
Open by default

Operation instructions

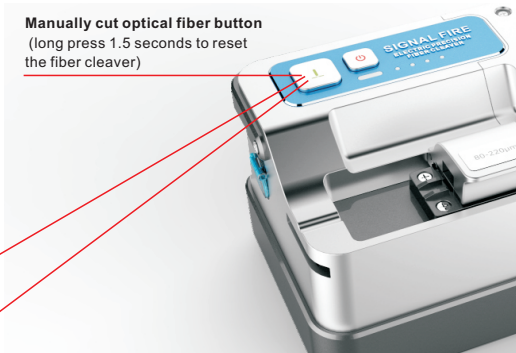
Electric precision **SF-10** OPTICAL FIBER CLEAVER

The default is automatic cutting mode: the fiber with the coating layer removed is placed on the cutter according to the required length, and after closing the upper plate of the fixture, it will be automatically cut without other operations. If you need to cut manually, open the APP and close the "automatic cutting"

Manual cutting: Place the prepared optical fiber, press the cutting button on the fiber cleaver or the "Cutting Optical fiber" button on the APP, and the fiber cleaver will cut the optical fiber by itself.



Manually cut optical fiber button
(long press 1.5 seconds to reset the fiber cleaver)



The two buttons here are equivalent to the cutting button function on the machine

Electric precision **SF-10** OPTICAL FIBER CLEAVER

Operation instructions

Fiber waste disposal:

Please empty the waste fiber in the waste fiber box and dispose of it properly.

Cutting set

1. Software download

China: scan QR code to download APP

Outside China: Go to Google Play or App Store and search for "Fiber Cleaver" download Phone App.



Google play



App store



Scan QR code

2. Open the APP and log into your account.

3. Connect the device and the Bluetooth indicator of the fiber cleaver will light up.

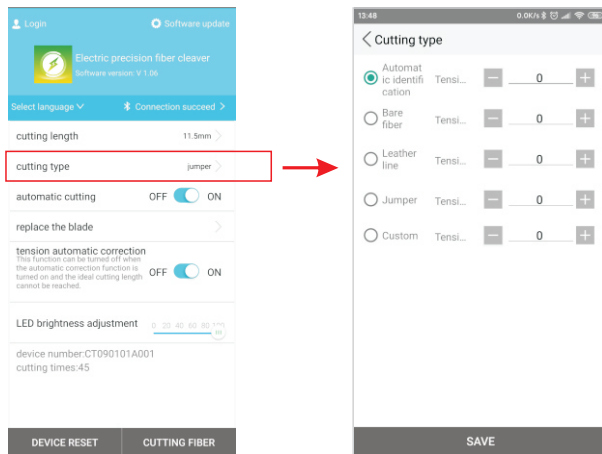


Waste fiber box

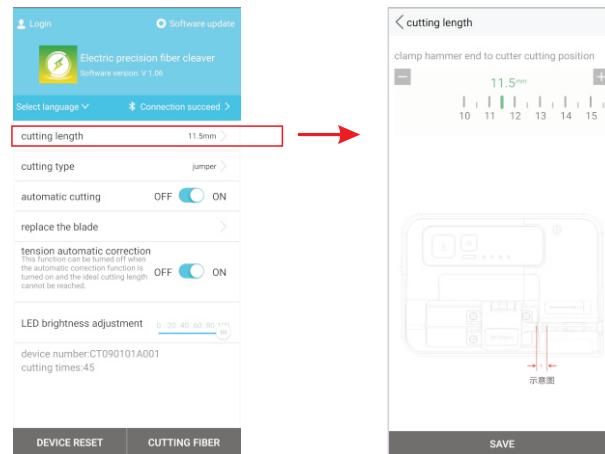


The Bluetooth connection is successful and the indicator is green

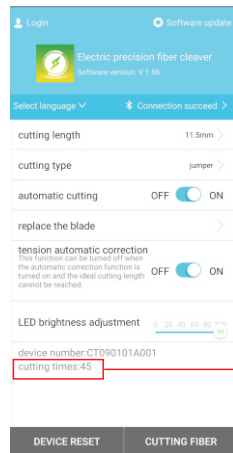
4. Select the type of fiber cutting



5. Set the cutting length

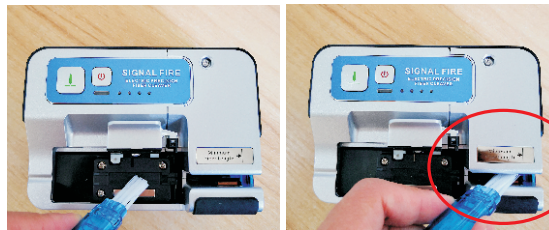


6.View cutting times



Software to check the cutting times

1.Please clean the glue pad of the holder with a brush before use, and clean the left and right splint.

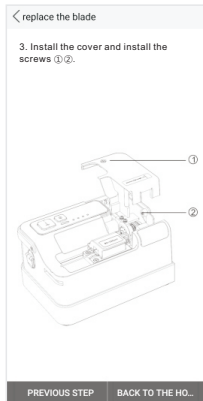
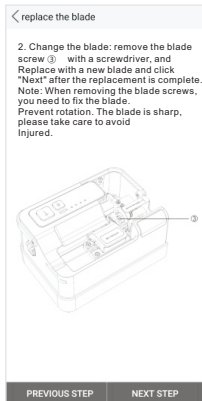
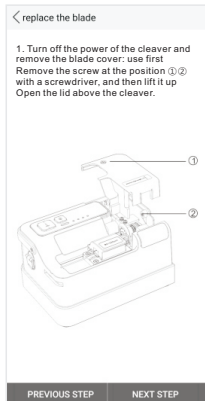
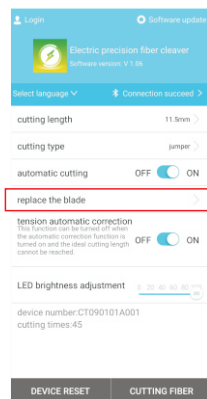


When there are waste fibers or debris on the left and right splints, the fibers cannot be clamped or the fibers cannot be cut.

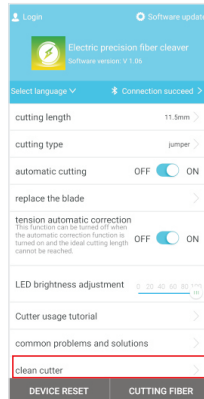
2.After use, please clean the glue pad of the holder with a brush, clean the left and right splint, and deal with the waste fiber of the waste fiber box.

3.Close the cover of the holder and put the cutting knife into the toolbox for safekeeping.

Replacement of blade



Blade clean



Common problems and solutions

Electric precision SF-10 OPTICAL FIBER CLEAVER

The Fiber Cleaver Is Not Cut After Placing The Fiber	Clean the left and right splint surfaces and the jig rubber pads
The Clamping Surface Of The Fiber Cleaver Cannot Hold The Optical Fiber Or Clip Off The Optical Fiber	Check whether there are broken fibers or residues on the two clamping surfaces of the fiber, use a brush to clean it or wipe it with alcohol cotton, and then relocate the fiber
Glitch	The tension is too small, increase the tension by 1-2
Angle Is Big	The tension is too small, increase the tension by 1-2
The End Face Is Uneven And Cracked	The tension is too large, reduce 1-2 tension values
The Optical Fiber Has Transverse Knife Grain	Clean left and right splint surface and fixture rubber pad
The Fiber Cleaver Does Not Cut Fiber	Clean left and right splint surface and fixture rubber pad
Optical Fiber End Face Irregularity	Clean left and right splint surface and fixture rubber pad
The Blade Is Not In The Normal Cutting Position	Long press the cutting button on the fiber cleaver for 1.5 seconds, and the fiber cleaver is reset
How To Deal With Fiber Breaking In Cutting Process	Using the fiber cleaver APP, connect the fiber cleaver and reduce the pull value by 1 to 3 values in [Cut type] - [Adjust pull value].
How To Deal With The End Face Of Optical Fiber Cut With Fiber Cleaver	Using the fiber cleaver APP, connect the fiber cleaver and add the pull value by 1 to 3 values in [Cut type] - [Adjust pull value]. If it is still not ideal, it may be because the cutting blade is not sharp enough due to too many times of use, please change the blade.

Electric precision SF-10 OPTICAL FIBER CLEAVER

Common problems and solutions

The fiber is not straight when cutting	Using the fiber cleaver APP, connect the fiber cleaver and add the pull value by 1 to 3 in [Cut type] – [Adjust pull value].
Press the cut key and there is no reaction	It may be that the fiber cleaver entered the blade replacement mode and did not exit. Please restart the fiber cleaver or click "Device Reset" on the fiber cleaver APP. If still not working, please return to the factory for repair.
Abnormal mechanism action	Please return to the original factory for inspection and repair
The power button cannot be started	It may start up immediately after shutting down, and wait 5 seconds before starting up again after each key.
Automatic shutdown when cutting	The battery is low, please charge it.