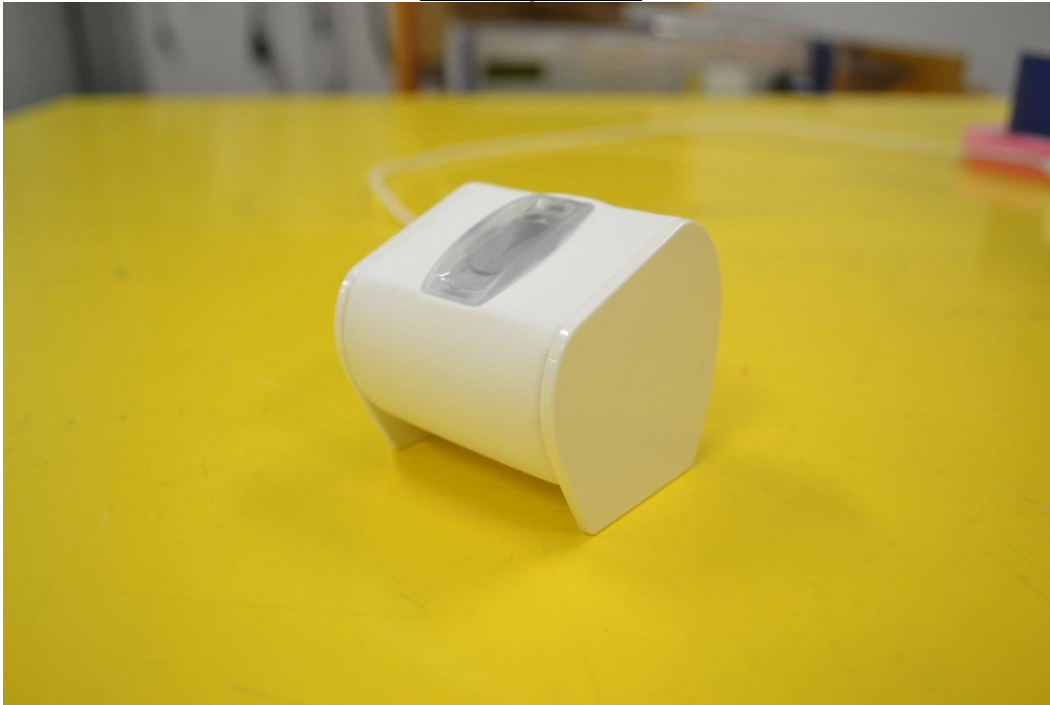


## 8. SETUP PHOTOS

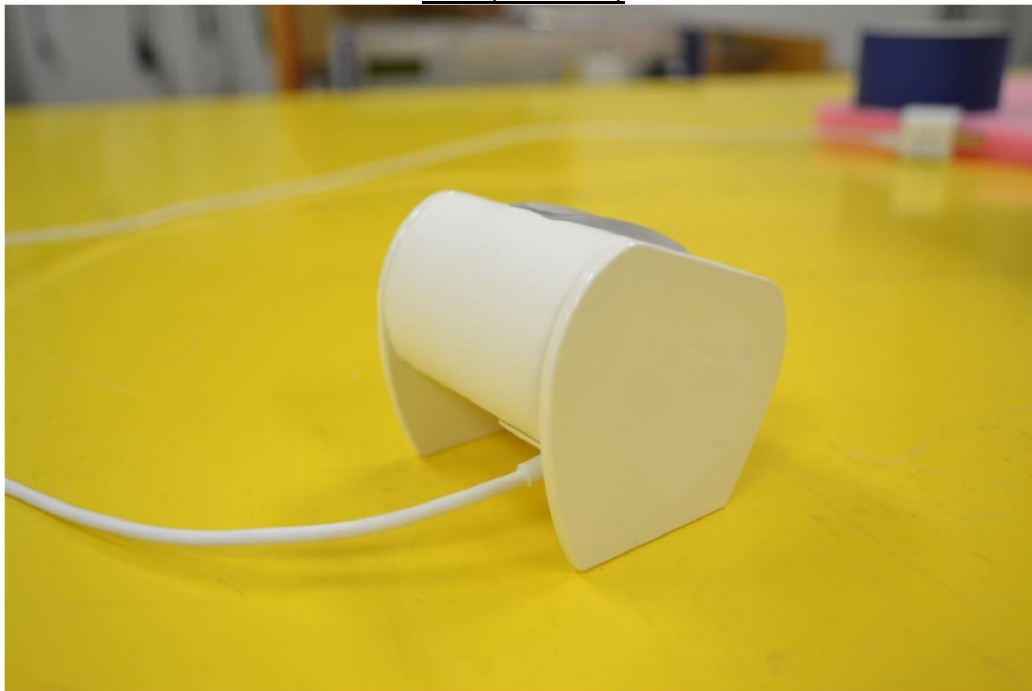
### Electric and magnetic field probe, 9 kHz – 30 MHz - EUT basic setup

A foam extension was attached to the front of the probe. The tip of the extension is 10cm from the geometric center of the probe. The probe was positioned so that the tip of the extension was coincident with the edge(s) of the EUT as shown in the photographs below.

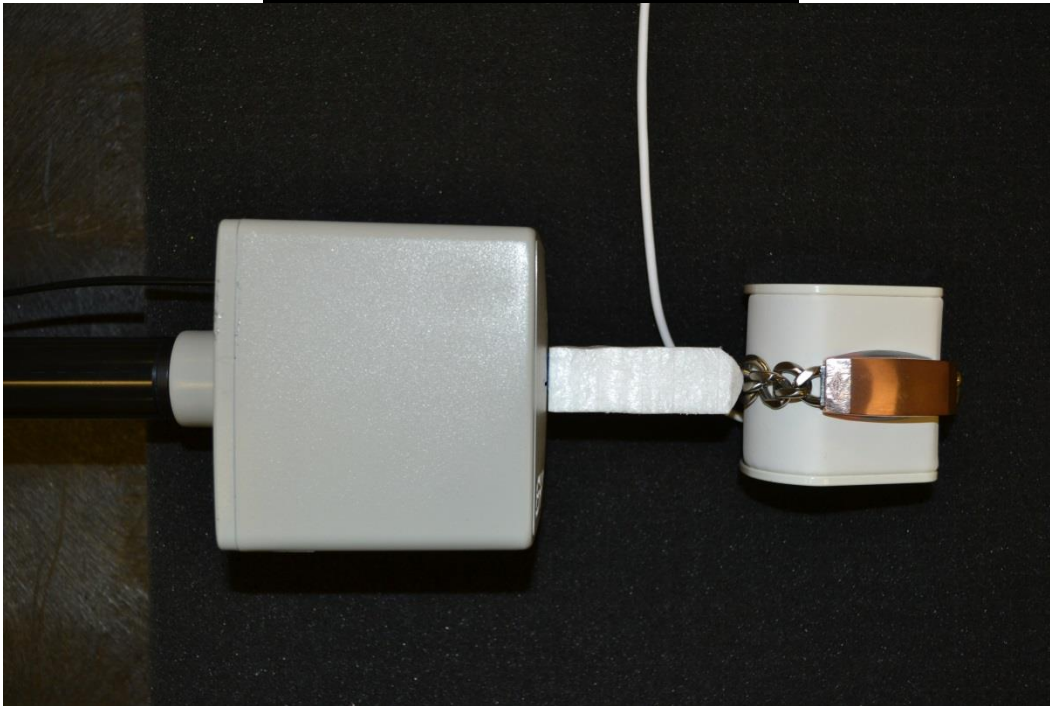
EUT (Right Side)



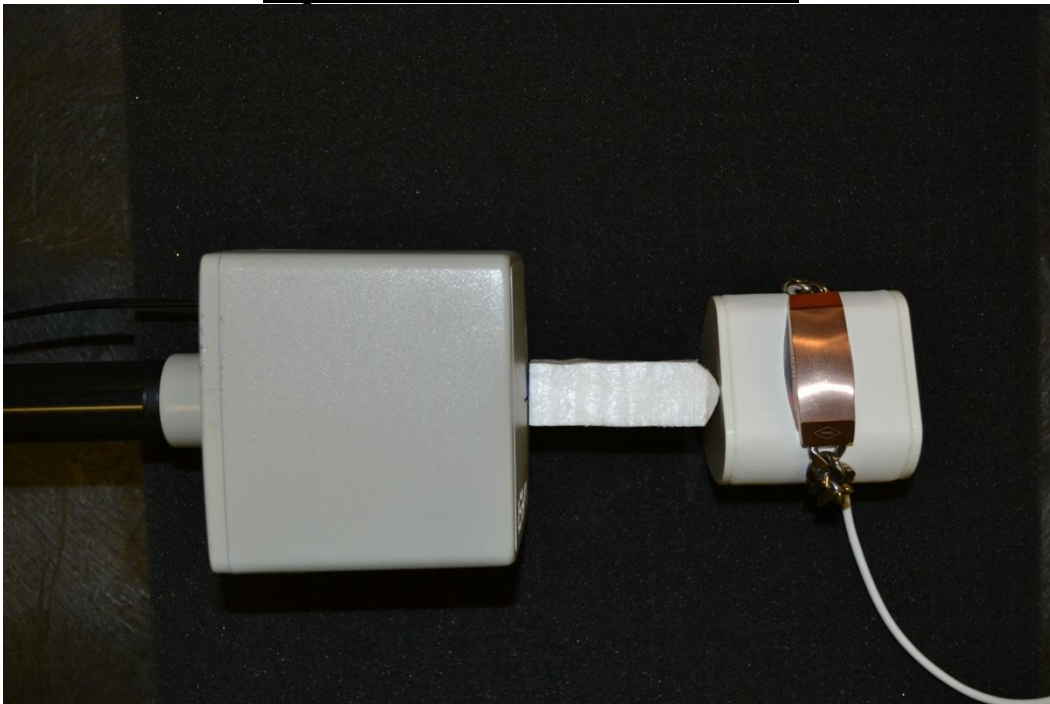
EUT (Left Side)



Edge 1 EUT and module with metal band



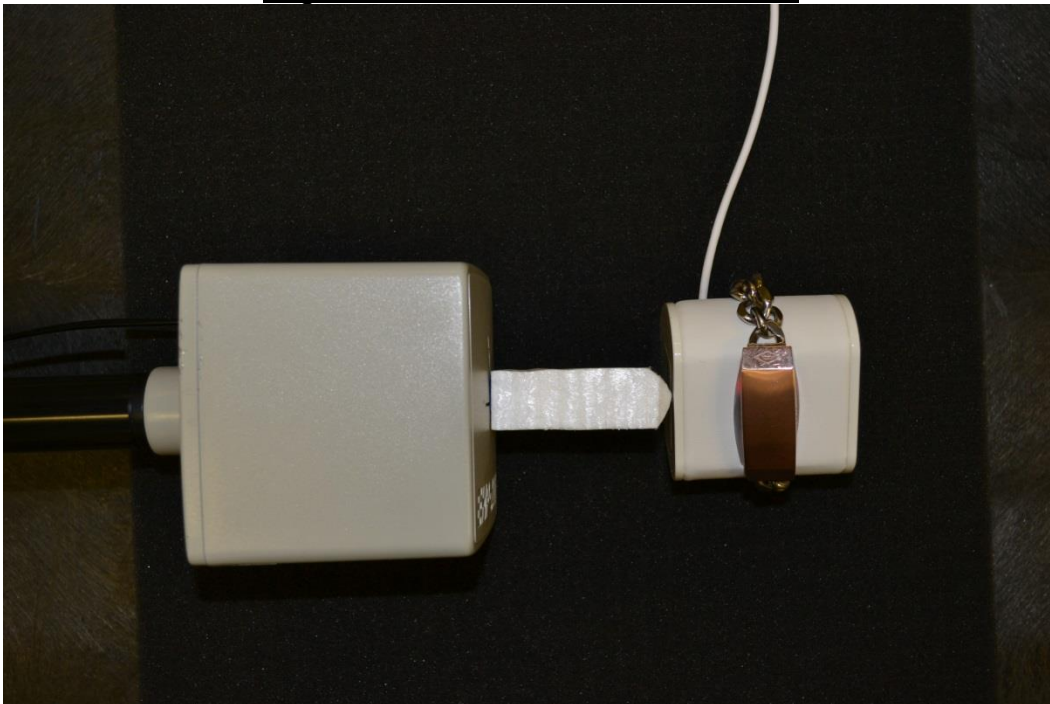
Edge 2 EUT and module with metal band



Edge 3 EUT and module with metal band

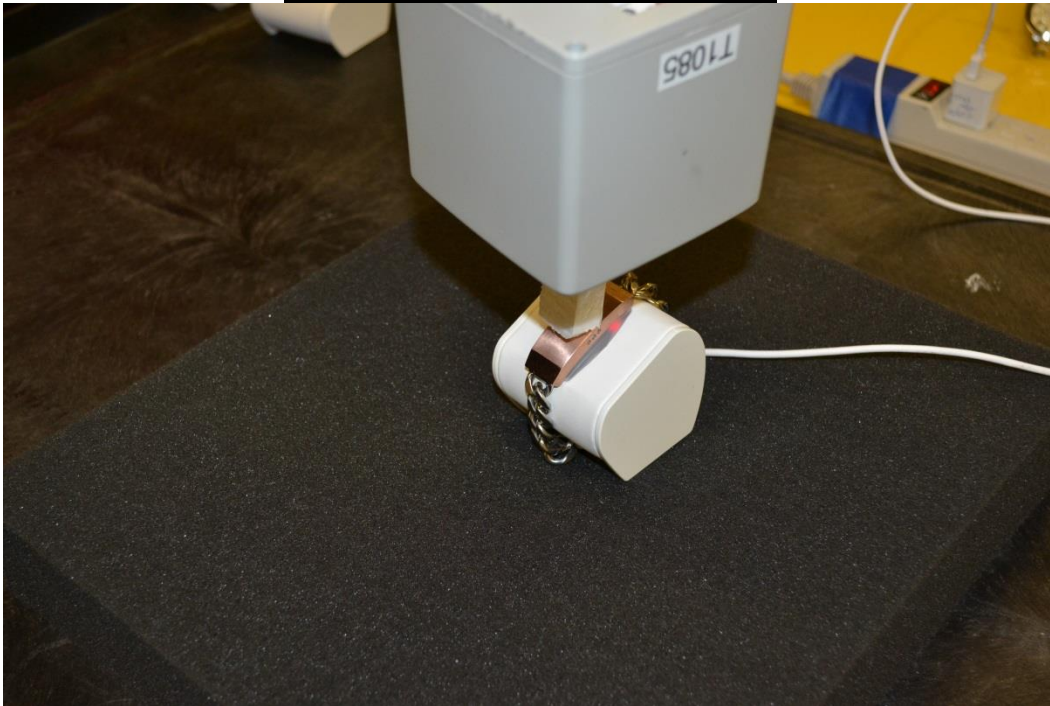


Edge 4 EUT and module with metal band





Top EUT and module with metal band



EUT and module with Leather band



**Note(s):**

Test Setup for EUT and Device with leather strap is the same as test setup for EUT and Device with metal band above.

EUT with without module



**Note(s):**

Test Setup for EUT and Device with leather strap is the same as test setup for EUT and Device with metal band above.

**END OF REPORT**