



313 West 12800 South, Suite 311  
Draper, UT 84020  
(801) 260-4040

## Test Report

### Certification

<b>FCC ID</b>	2AB8I-RR4
<b>Equipment Under Test</b>	RR4
<b>Test Report Serial No</b>	V057052_01
<b>Dates of Test</b>	March 4 and 18, 2021
<b>Report Issue Date</b>	March 22, 2021

<b>Test Specifications:</b>	<b>Applicant:</b>
FCC Part 15, Subpart C	Next Century Submetering Systems, LLC P.O. Box 360 Tybee Island, GA 31328 U.S.A.



## Certification of Engineering Report

This report has been prepared by VPI Laboratories, Inc. to document compliance of the device described below with the requirements of Federal Communications Commission (FCC) Part 15, Subpart C. This report may be reproduced in full. Partial reproduction of this report may only be made with the written consent of the laboratory. The results in this report apply only to the sample tested.

<b>Applicant</b>	Next Century Submetering Systems, LLC
<b>Manufacturer</b>	Next Century Submetering Systems, LLC
<b>Brand Name</b>	Next Century
<b>Model Number</b>	RR4
<b>FCC ID</b>	2AB8I-RR4

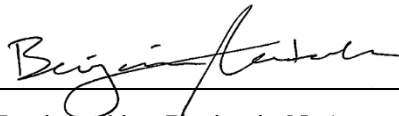
On this 22<sup>nd</sup> day of March 2021, I, individually and for VPI Laboratories, Inc., certify that the statements made in this engineering report are true, complete, and correct to the best of my knowledge, and are made in good faith.

Although NVLAP has accredited the VPI Laboratories, Inc. EMC testing facilities, this report must not be used to claim product certification, approval, or endorsement by NVLAP, NIST, or any agency of the federal government.

VPI Laboratories, Inc.



Tested by: Norman P. Hansen



Reviewed by: Benjamin N. Antczak

---

<b>Revision History</b>		
<b>Revision</b>	<b>Description</b>	<b>Date</b>
01	Original Report Release	March 22, 2021

## Table of Contents

1	Client Information.....	5
1.1	Applicant.....	5
1.2	Manufacturer.....	5
2	Equipment Under Test (EUT).....	6
2.1	Identification of EUT.....	6
2.2	Description of EUT.....	6
2.3	EUT and Support Equipment.....	6
2.4	Interface Ports on EUT.....	7
2.5	Modification Incorporated/Special Accessories on EUT.....	7
2.6	Deviation from Test Standard.....	7
3	Test Specification, Methods and Procedures.....	8
3.1	Test Specification.....	8
3.2	Methods & Procedures.....	8
3.3	Test Procedure.....	12
4	Operation of EUT During Testing.....	13
4.1	Operating Environment.....	13
4.2	Operating Modes.....	13
4.3	EUT Exercise Software.....	13
5	Summary of Test Results.....	14
5.1	FCC Part 15, Subpart C.....	14
5.2	Result.....	14
6	Measurements, Examinations and Derived Results.....	15
6.1	General Comments.....	15
6.2	Test Results.....	15
7	Test Procedures and Test Equipment.....	26
7.1	Direct Connection at the Antenna Port Test.....	26
7.2	Radiated Emissions.....	26
7.3	Equipment Calibration.....	28
7.4	Measurement Uncertainty.....	28
8	Photographs.....	29

## 1 Client Information

### 1.1 Applicant

<b>Company Name</b>	Next Century Submetering Systems, LLC P.O. Box 360 Tybee Island, GA 31328 U.S.A.
<b>Contact Name</b>	Adam Paul
<b>Title</b>	Executive Engineer

### 1.2 Manufacturer

<b>Company Name</b>	Next Century Submetering Systems, LLC P.O. Box 360 Tybee Island, GA 31328 U.S.A.
<b>Contact Name</b>	Adam Paul
<b>Title</b>	Executive Engineer

## 2 Equipment Under Test (EUT)

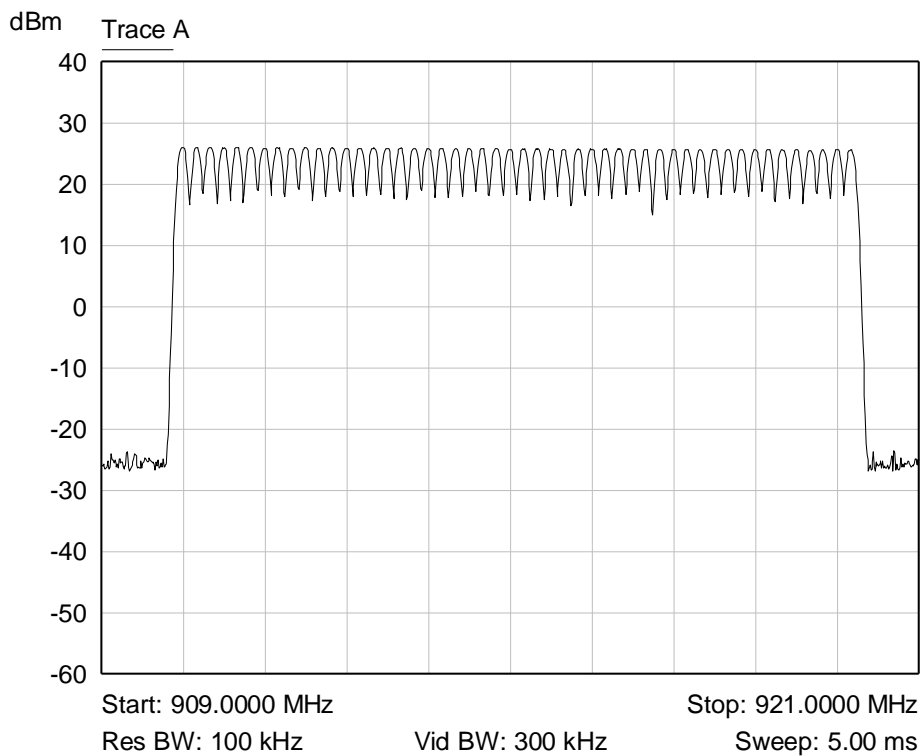
### 2.1 Identification of EUT

<b>Brand Name</b>	Next Century
<b>Model Number</b>	RR4
<b>Serial Number</b>	None
<b>Dimensions (cm)</b>	12 x 14 x 2.5

### 2.2 Description of EUT

The RR4 is a meter interface that is powered by a CR18505, 3V battery, and includes a 910.2 MHz – 920.0 MHz transceiver and a BLE transceiver. The system is designed so that only one transceiver at a time may be in use.

The 900 MHz transceiver uses a trace on the PCB as an antenna. 50 hopping channels are used, starting at 910.2 MHz thru 920 MHz and spaced 200 kHz apart. See the plot below.



This report covers the 900 MHz FHSS transceiver circuitry of the devices subject to FCC Part 15, Subpart C. The circuitry of the device subject to FCC Subpart B and the BLE transceiver were found to be compliant and is covered in a separate report.

### 2.3 EUT and Support Equipment

The EUT and support equipment used during the test are listed below.

Brand Name Model Number Serial Number	Description	Name of Interface Ports / Interface Cables
BN: Next Century MN: RR4 (Note 1) SN: None	Meter Interface	See Section 2.4

Notes: (1) EUT

## 2.4 Interface Ports on EUT

Name of Ports	No. of Ports Fitted to EUT	Cable Description/Length
Meter interface	1	3 conductors @ 1m

## 2.5 Modification Incorporated/Special Accessories on EUT

There were no modifications or special accessories required to comply with the specification.

## 2.6 Deviation from Test Standard

There were no deviations from the test specification.

### 3 Test Specification, Methods and Procedures

#### 3.1 Test Specification

<b>Title</b>	FCC PART 15, Subpart C (47 CFR 15) 15.203, 15.207, and 15.247 Limits and methods of measurement of radio interference characteristics of radio frequency devices.
<b>Purpose of Test</b>	The tests were performed to demonstrate initial compliance

#### 3.2 Methods & Procedures

##### 3.2.1 §15.203 Antenna Requirement

An intentional radiator shall be designed to ensure that no antenna other than that furnished by the responsible party shall be used with the device. The use of a permanently attached antenna or of an antenna that uses a unique coupling to the intentional radiator shall be considered sufficient to comply with the provisions of this Section. The manufacturer may design the unit so that a broken antenna can be replaced by the user, but the use of a standard antenna jack or electrical connector is prohibited. This requirement does not apply to carrier current devices or to devices operated under the provisions of Sections 15.211, 15.213, 15.217, 15.219, or 15.221. Further, this requirement does not apply to intentional radiators that must be professionally installed, such as perimeter protection systems and some field disturbance sensors, or to other intentional radiators which, in accordance with Section 15.31(d), must be measured at the installation site. However, the installer shall be responsible for ensuring that the proper antenna is employed so that the limits in this Part are not exceeded.

##### 3.2.2 §15.207 Conducted Limits

(a) Except as shown in paragraphs (b) and (c) of this section, for an intentional radiator that is designed to be connected to the public utility (AC) power line, the radio frequency voltage that is conducted back onto the AC power line on any frequency or frequencies, within the band 150 kHz to 30 MHz, shall not exceed the limits in the following table, as measured using a 50  $\mu$ H/50 ohms line impedance stabilization network (LISN). Compliance with the provisions of this paragraph shall be based on the measurement of the radio frequency voltage between each power line and ground at the power terminal. The lower limit applies at the boundary between the frequency ranges.

Frequency range (MHz)	Limit (dB $\mu$ V)	
	Quasi-peak	Average
0.15 to 0.50*	66 to 56*	56 to 46*
0.50 to 5	56	46
5 to 30	60	50

\*Decreases with the logarithm of the frequency.

**Table 1: Limits for conducted emissions at mains ports of Class B ITE.**

##### 3.2.3 §15.247 Operation within the bands 902 – 928 MHz, 2400 – 2483.5 MHz, and 5725 – 5850 MHz

- a) Operation under the provisions of this Section is limited to frequency hopping and digitally modulated intentional radiators that comply with the following provisions.



- 1) Frequency hopping systems shall have hopping channel carrier frequencies separated by a minimum of 25 kHz or the 20 dB bandwidth of the hopping channel, whichever is greater. Alternatively, frequency hopping systems operating in the 2400 – 2483.5 MHz band may have hopping channel carrier frequencies that are separated by 25 kHz or two-thirds of the 20 dB bandwidth of the hopping channel, whichever is greater, provided the systems operate with an output power no greater than 125 mW. The system shall hop to channel frequencies that are selected at the system hopping rate from a pseudorandomly ordered list of hopping frequencies. Each frequency must be used equally on the average by each transmitter. The system receivers shall have input bandwidths that match the hopping channel bandwidths of their corresponding transmitters and shall shift frequencies in synchronization with the transmitted signals.
    - i. For frequency hopping systems operating in the 902-928 MHz band: if the 20 dB bandwidth of the hopping channel is less than 250 kHz, the system shall use at least 50 hopping frequencies and the average time of occupancy on any frequency shall not be greater than 0.4 seconds within a 20 second period; if the 20 dB bandwidth of the hopping channel is 250 kHz or greater, the system shall use at least 25 hopping frequencies and the average time of occupancy on any frequency shall not be greater than 0.4 seconds within a 10 second period. The maximum allowed 20 dB bandwidth of the hopping channel is 500 kHz.
    - ii. Frequency hopping systems operating in the 5725-5850 MHz band shall use at least 75 hopping frequencies. The maximum 20 dB bandwidth of the hopping channel is 1 MHz. The average time of occupancy on any frequency shall not be greater than 0.4 seconds within a 30 second period.
    - iii. Frequency hopping systems in the 2400-2483.5 MHz band shall use at least 15 non-overlapping channels. The average time of occupancy on any channel shall not be greater than 0.4 seconds within a period of 0.4 seconds multiplied by the number of hopping channels employed. Frequency hopping systems may avoid or suppress transmissions on a particular hopping frequency provided that a minimum of 15 non-overlapping channels are used.
  - 2) Systems using digital modulation techniques may operate in the 902 - 928 MHz, 2400 - 2483.5 MHz, and 5725 - 5850 MHz bands. The minimum 6 dB bandwidth shall be at least 500 kHz.
- b) The maximum peak output power of the intentional radiator shall not exceed the following:
- 1) For frequency hopping systems operating in the 2400-2483.5 MHz band employing at least 75 non-overlapping hopping channels, and all frequency hopping systems in the 5725-5850 MHz band: 1 watt. For all other frequency hopping systems in the 2400-2483.5 MHz band: 0.125 watts.
  - 2) For frequency hopping systems operating in the 902-928 MHz band: 1 watt for systems employing at least 50 hopping channels; and, 0.25 watts for systems employing less than 50 hopping channels, but at least 25 hopping channels, as permitted under paragraph (a)(1)(i) of this section.
  - 3) For systems using digital modulation in the 902-928 MHz, 2400-2483.5 MHz, and 5725 – 5850 MHz bands: 1 watt. As an alternative to a peak power measurement,

compliance with the Conducted Output Power is defined as the total transmit power delivered to all antennas and antenna elements averaged across all symbols in the signaling alphabet when the transmitter is operating at its maximum power control level. Power must be summed across all antennas and antenna elements. The average must not include any time intervals during which the transmitter is off or is transmitting at a reduced power level. If multiple modes of operation are possible (e.g., alternative modulation methods), the maximum conducted output power is the highest total transmit power occurring in any mode.

- 4) The conducted output power limit specified in paragraph (b) of this section is based on the use of antennas with directional gains that do not exceed 6 dBi. Except as shown in paragraph (c) of this section, if transmitting antennas of directional gain greater than 6 dBi are used, the conducted power from the intentional radiator shall be reduced below the stated values in paragraphs (b)(1), (b)(2), and (b)(3) of this section, as appropriate, by the amount in dB that the directional gain of the antenna exceeds 6 dBi.
- c) Operation with directional antenna gains greater than 6 dBi.
- 1) Fixed point-to-point operation:
    - i. Systems operating in the 2400-2483.5 MHz band that are used exclusively for fixed, point-to-point operations may employ transmitting antennas with directional gain greater than 6 dBi provided the maximum peak output power of the intentional radiator is reduced by 1 dB for every 3 dB that the directional gain of the antenna exceeds 6 dBi.
    - ii. Systems operating in the 5725-5850 MHz band that are used exclusively for fixed, point-to-point operations may employ transmitting antennas with directional gain greater than 6 dBi without any corresponding reduction in transmitter peak output power.
    - iii. Fixed, point-to-point operation, as used in paragraphs (b)(4)(i) and (b)(4)(ii) of this section, excludes the use of point-to-multipoint systems, omnidirectional applications, and multiple co-located intentional radiators transmitting the same information. The operator of the spread spectrum or digitally modulated intentional radiator or, if the equipment is professionally installed, the installer is responsible for ensuring that the system is used exclusively for fixed, point-to-point operations. The instruction manual furnished with the intentional radiator shall contain language in the installation instructions informing the operator and the installer of this responsibility.
  - 2) In addition to the provisions in paragraphs (b)(1), (b)(3), (b)(4) and (c)(1)(i) of this section, transmitters operating in the 2400-2483.5 MHz band that emit multiple directional beams, simultaneously or sequentially, for the purpose of directing signals to individual receivers or to groups of receivers provided the emissions comply with the following:
    - i. Different information must be transmitted to each receiver.
    - ii. If the transmitter employs an antenna system that emits multiple directional beams but does not emit multiple directional beams

simultaneously, the total output power conducted to the array or arrays that comprise the device, i.e., the sum of the power supplied to all antennas, antenna elements, staves, etc. and summed across all carriers or frequency channels, shall not exceed the limit specified in paragraph (b)(1) or (b)(3) of this section, as applicable. However, the total conducted output power shall be reduced by 1 dB below the specified limits for each 3 dB that the directional gain of the antenna /antenna array exceeds 6 dBi. The directional antenna gain shall be computed as follows:

- A. The directional gain shall be calculated as the sum of 10 log (number of array elements or staves) plus the directional gain of the element or stave having the highest gain.
  - B. A lower value for the directional gain than that calculated in paragraph (c)(2)(ii)(A) of this section will be accepted if sufficient evidence is presented, e.g., due to shading of the array or coherence loss in the beamforming.
- iii. If a transmitter employs an antenna that operates simultaneously on multiple directional beams using the same or different frequency channels, the power supplied to each emission beam is subject to the power limit specified in paragraph (c)(2)(ii) of this section. If transmitted beams overlap, the power shall be reduced to ensure that their aggregate power does not exceed the limit specified in paragraph (c)(2)(ii) of this section. In addition, the aggregate power transmitted simultaneously on all beams shall not exceed the limit specified in paragraph (c)(2)(ii) of this section by more than 8 dB.
- iv. Transmitters that emit a single directional beam shall operate under the provisions of paragraph (c)(1) of this section.
- d) In any 100 kHz bandwidth outside the frequency band in which the spread spectrum or digitally modulated intentional radiator is operating, the radio frequency power that is produced by the intentional radiator shall be at least 20 dB below that in the 100 kHz bandwidth within the band that contains the highest level of the desired power, based on either an RF conducted or a radiated measurement, provided the transmitter demonstrates compliance with the peak conducted power limits. If the transmitter complies with the conducted power limits based on the use of RMS averaging over a time interval, as permitted under paragraph (b)(3) of this section, the attenuation required under this paragraph shall be 30 dB instead of 20 dB. Attenuation below the general limits specified in Section 15.209(a) is not required. In addition, radiated emissions which fall in the restricted bands, as defined in Section 15.205(a), must also comply with the radiated emission limits specified in Section 15.209(a) (see Section 15.205(c)).
- e) For digitally modulated systems, the power spectral density conducted from the intentional radiator to the antenna shall not be greater than 8 dBm in any 3 kHz band during any time interval of continuous transmission. This power spectral density shall be determined in accordance with the provisions of paragraph (b) of this section. The same method of determining the conducted output power shall be used to determine the power spectral density.
- f) For the purposes of this section, hybrid systems are those that employ a combination of both frequency hopping and digital modulation techniques. The frequency hopping operation of the hybrid system, with the direct sequence or digital modulation operation turned off, shall have an average time of occupancy on any frequency not to exceed 0.4 seconds within a time period in seconds equal to the number of hopping frequencies employed multiplied by 0.4. The digital

modulation operation of the hybrid system, with the frequency hopping turned off, shall comply with the power density requirements of paragraph (d) of this section.

- g) Frequency hopping spread spectrum systems are not required to employ all available hopping channels during each transmission. However, the system, consisting of both the transmitter and the receiver, must be designed to comply with all of the regulations in this section should the transmitter be presented with a continuous data (or information) stream. In addition, a system employing short transmission bursts must comply with the definition of a frequency hopping system and must distribute its transmissions over the minimum number of hopping channels specified in this section.
- h) The incorporation of intelligence within a frequency hopping spread spectrum system that permits the system to recognize other users within the spectrum band so that it individually and independently chooses and adapts its hopsets to avoid hopping on occupied channels is permitted. The coordination of frequency hopping systems in any other manner for the express purpose of avoiding the simultaneous occupancy of individual hopping frequencies by multiple transmitters is not permitted.
- i) Systems operating under the provisions of this section shall be operated in a manner that ensures that the public is not exposed to radio frequency energy levels in excess of the Commission's guidelines. See § 1.1307(b)(1) of this Chapter.

Note: Spread spectrum systems are sharing these bands on a noninterference basis with systems supporting critical Government requirements that have been allocated the usage of these bands, secondary only to ISM equipment operated under the provisions of Part 18 of this Chapter. Many of these Government systems are airborne radiolocation systems that emit a high EIRP which can cause interference to other users. Also, investigations of the effect of spread spectrum interference to U. S. Government operations in the 902-928 MHz band may require a future decrease in the power limits allowed for spread spectrum operation.

### **3.3 Test Procedure**

VPI Laboratories, Inc. is accredited by National Voluntary Laboratory Accreditation Program (NVLAP); NVLAP Lab Code: 100272-0, which is effective until September 30, 2021. VPI Laboratories, Inc. carries FCC Accreditation Designation Number US5263. VPI Laboratories main office is located at 313 W 12800 S, Suite 311, Draper, UT 84020. The testing was performed according to the procedures in ANSI C63.10-2013, KDB 558074, and 47 CFR Part 15.

## 4 Operation of EUT During Testing

### 4.1 Operating Environment

Power Supply	3 VDC from CR18505 battery
--------------	----------------------------

### 4.2 Operating Modes

The transmitter was tested while in a constant transmit mode at the upper, middle, and lower channels. A new battery was installed for testing. Transmit power was at the default setting.

### 4.3 EUT Exercise Software

Internal firmware was used to exercise the EUT.

## 5 Summary of Test Results

### 5.1 FCC Part 15, Subpart C

#### 5.1.1 Summary of Tests

Section	Environmental Phenomena	Frequency Range (MHz)	Result
15.203	Antenna Requirements	Structural requirement	Complied
15.207	Conducted Disturbance at Mains Ports	0.15 to 30	Not Applicable (Note 1)
15.247(a)	Channel Separation	902 – 928	Complied
15.247(a)	20 Db Bandwidth	902 – 928	Complied
15.247(a)	Time of Occupancy	902 – 928	Complied
15.247(b)	Peak Output Power	902 – 928	Complied
15.247(d)	Spurious Emissions	0.009 – 9200	Complied
15.247(g)	Channel Usage	902 – 928	Complied (Note 2)
15.247(h)	Channel Intelligence/Avoidance	902 – 928	Complied (Note 2)
15.247(i)	RF Exposure	902 – 928	Complied (Note 2)
<p>Note 1: The EUT has no provisions for connection to the AC mains or a device that connects to the AC mains; therefore, this test is not applicable.</p> <p>Note 2: Compliance with these requirements is shown in documents filed with the FCC at the time of Certification.</p>			

### 5.2 Result

In the configuration tested, the EUT complied with the requirements of the specification.

## 6 Measurements, Examinations and Derived Results

### 6.1 General Comments

This section contains the test results only. Details of the test methods used and a list of the test equipment used during the measurements can be found in Section 7 of this report.

### 6.2 Test Results

#### 6.2.1 §15.203 Antenna Requirements

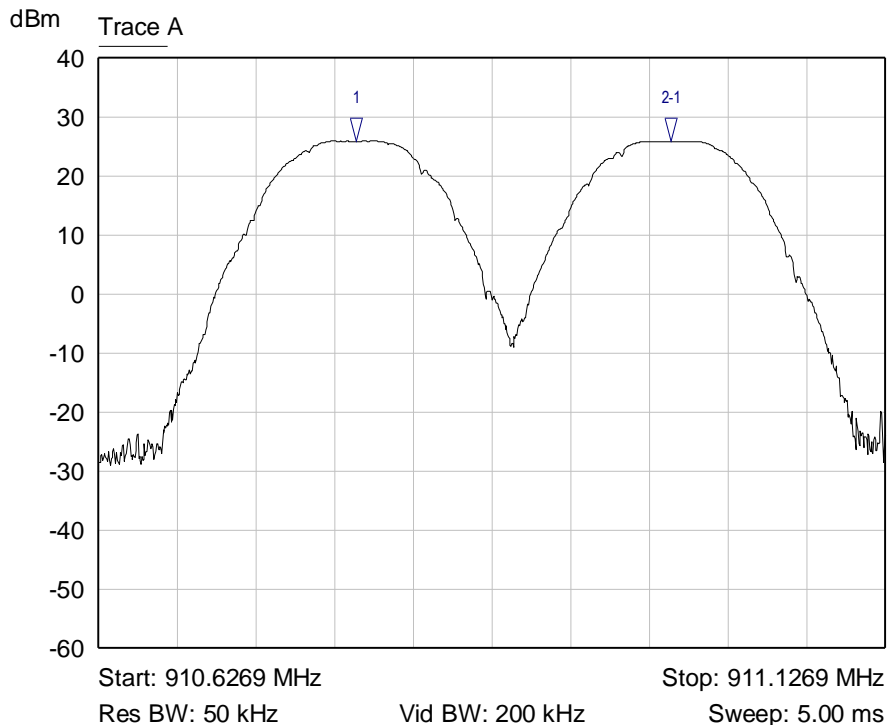
The EUT uses a trace on the PCB as an antenna. The maximum gain of the antenna is 0 dBi.

#### Result

The EUT complied with the specification.

#### 6.2.2 §15.247(a) Channel Separation

The EUT must have the hopping channel carrier frequencies separated by 25 kHz or the 20 dB bandwidth, whichever is greater. A plot showing a 200 kHz channel separation is shown below. The 20 dB bandwidth is 40.0 kHz and is shown in section 6.2.3.



Mkr	Trace	X-Axis	Value	Notes
1 ▾	Trace A	910.7909 MHz	25.85 dBm	
2-1 ▾	Trace A	200.0000 kHz	0.05 dB	

**Graph 1: Channel Separation Plot**

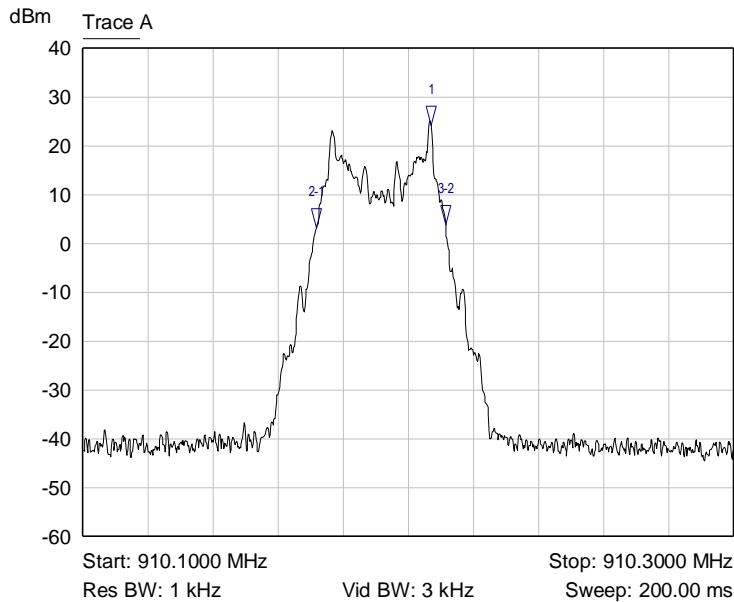
**Result**

The channel carrier frequency separation is 200 kHz, which is greater than the 20 dB bandwidth; therefore, the EUT complies with the specification.

**6.2.3 §15.247(a)(2) Emissions Bandwidth**

The 20 dB bandwidth of the hopping channels is shown in the table and plots below.

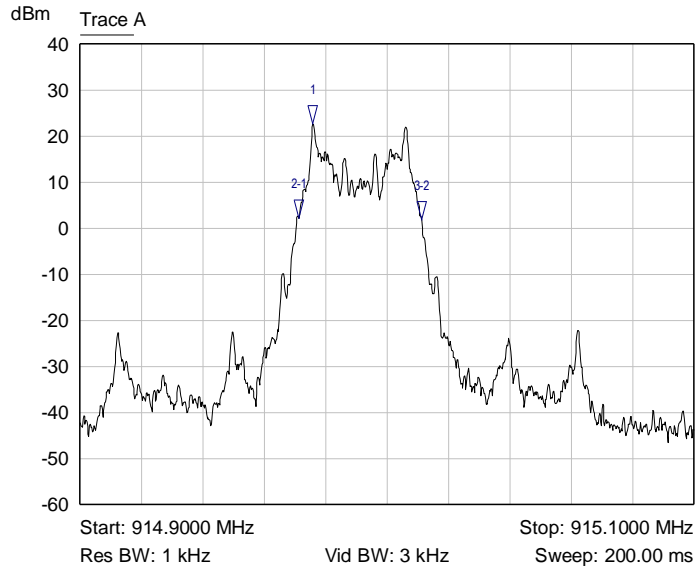
Frequency (MHz)	Emissions 20 dB bandwidth (kHz)
910.2	39.6
915.0	40.0
920.0	40.0



Mkr	Trace	X-Axis	Value	Notes
1 ▾	Trace A	910.2070 MHz	24.12 dBm	
2-1 ▾	Trace A	-35.2000 kHz	-20.96 dB	
3-2 ▾	Trace A	39.6000 kHz	0.73 dB	

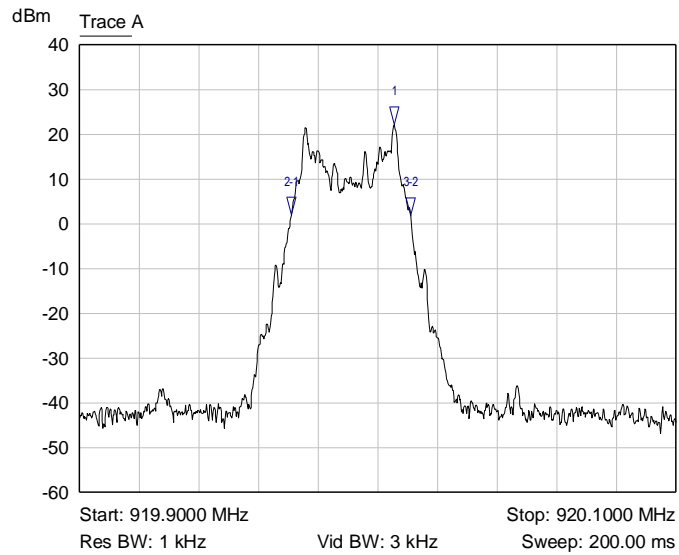
**Graph 2: Lowest Channel 20 dB Bandwidth**





Mkr	Trace	X-Axis	Value	Notes
1 ▾	Trace A	914.9758 MHz	22.61 dBm	
2:1 ▾	Trace A	-4.6000 kHz	-20.50 dB	
3:2 ▾	Trace A	40.0000 kHz	-0.25 dB	

**Graph 3: Middle Channel 20 dB Bandwidth**



Mkr	Trace	X-Axis	Value	Notes
1 ▾	Trace A	920.0054 MHz	22.14 dBm	
2:1 ▾	Trace A	-34.4000 kHz	-20.07 dB	
3:2 ▾	Trace A	40.0000 kHz	-0.17 dB	

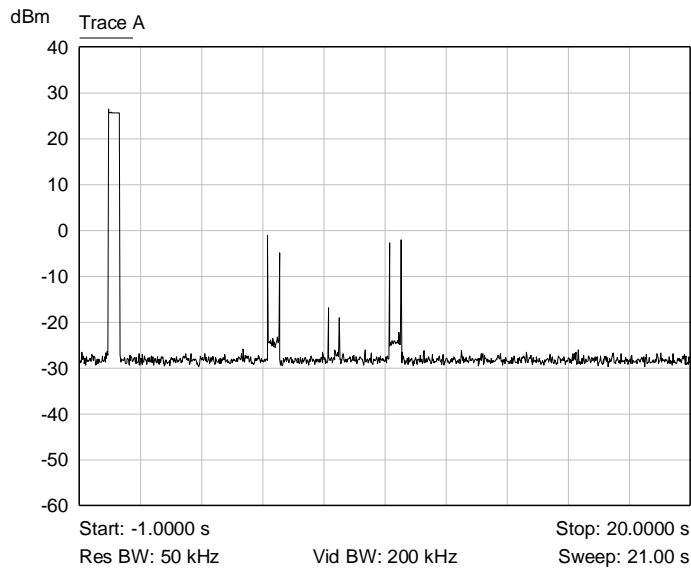
**Graph 4: Highest Channel 20 dB Bandwidth**

## Result

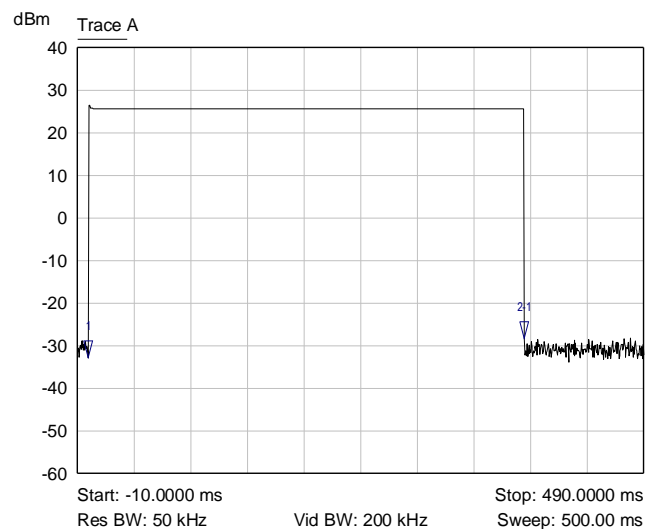
In the configuration tested, the EUT complied with the requirements of the specification.

### 6.2.4 §15.247(a) Channel Occupancy

The EUT uses 50 channels that have a bandwidth less than 250 kHz; therefore, the EUT must have an average time of occupancy on any frequency that is no greater than 0.4 seconds in a period of 20 seconds. See the plots and calculations below.



**Graph 5: Timing Plot Showing Channel Hits**



Mkr	Trace	X-Axis	Value	Notes
1	Trace A	-500.0000 us	-32.85 dBm	
2-1	Trace A	385.0000 ms	4.54 dB	

**Graph 6: Timing Plot Showing Duration of Channel On Time**

From the plot, the EUT transmits less than 1 time per 20 seconds for 385 milliseconds at each transmission.

$$\text{Dwell time} = 385 \text{ ms} \times 1 \text{ hit}/20 \text{ second period} = 385 \text{ ms on time in 20 seconds}$$

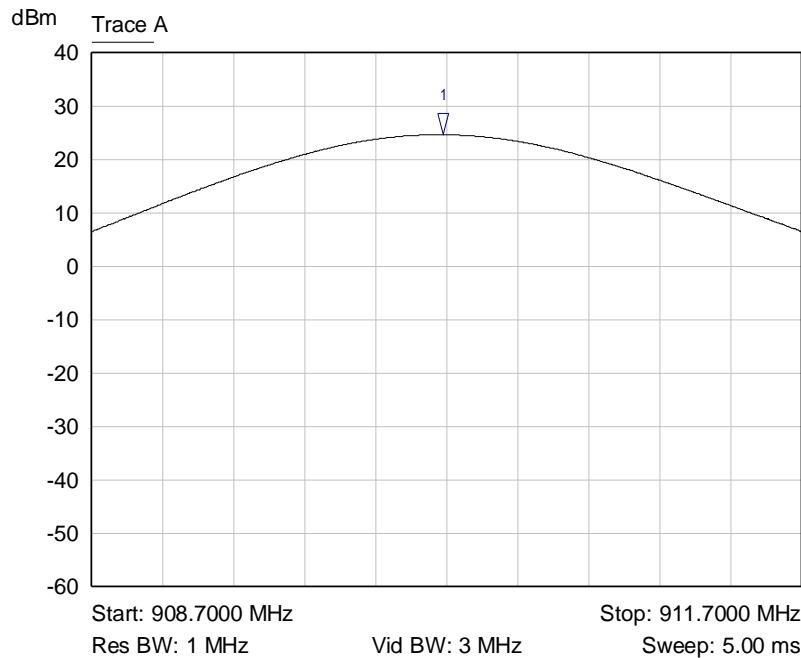
**Result**

The EUT complies with the specification as the EUT transmits on an individual channel for a maximum of 385 milliseconds in 20 seconds, less than the 0.4 seconds allowed by the specification.

**6.2.5 §15.247(b)(3) Peak Output Power**

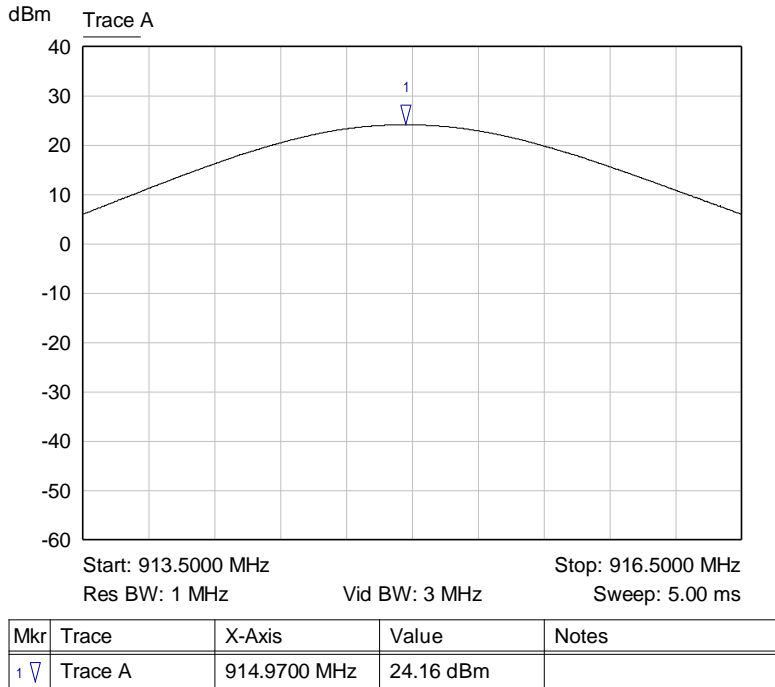
The antenna used with the EUT has a gain of 0 dBi. The EUT uses 50 hopping channels. The limit for this device is 30 dBm or 1 Watt. Plots are shown below and the results of this testing are summarized in the table.

Frequency (MHz)	Measurement (dBm)	Peak Output Power (mW)
910.2	24.67	293.0
915.0	24.16	260.6
920.0	23.73	236.0

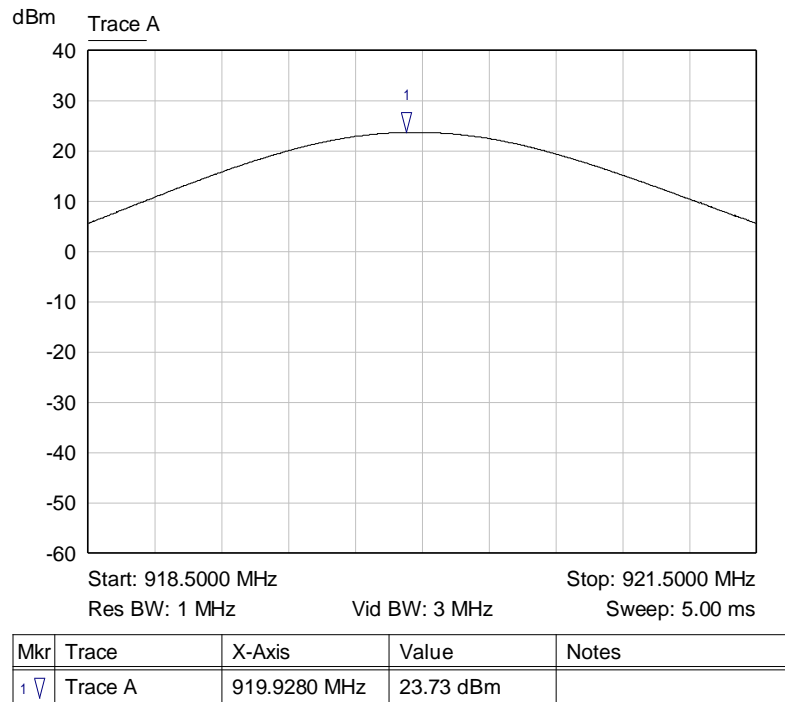


Mkr	Trace	X-Axis	Value	Notes
1 ▾	Trace A	910.1850 MHz	24.67 dBm	

**Graph 7: Transmitting at the Lowest Channel**



**Graph 8: Transmitting at the Middle Channel**



**Graph 9: Transmitting at the Highest Channel**

**Result**

In the configuration tested, the RF peak output power was less than 1 Watt; therefore, the EUT complied with the requirements of the specification.

**6.2.6 §15.247(d) Spurious Emissions**

The frequency range from the lowest frequency generated or used in the device to the tenth harmonic of the highest fundamental emission was investigated to measure any radiated emissions. The following tables show measurements of any emission found. The tables show the worst-case emission measured from the EUT. The emissions in the restricted bands must meet the limits specified in §15.209. Emissions outside the restricted bands must be attenuated 20 dB below the maximum fundamental emission measured when using a 100 kHz RBW.

Frequency (MHz)	Detector	Antenna Polarity	Receiver Reading (dBµV)	Correction Factor (dB)	Field Strength (dBµV/m)	Limit (dBµV/m)	Margin (dB)
1820.4*	Peak	Vertical	17.5	30.1	47.6	74.0	-26.4
1820.4*	Average	Vertical	15.8	30.1	45.9	54.0	-8.1
1820.4*	Peak	Horizontal	22.4	30.1	52.5	74.0	-21.5
1820.4*	Average	Horizontal	19.6	30.1	49.7	54.0	-4.3
2730.6	Peak	Vertical	14.2	33.2	47.4	74.0	-26.6
2730.6	Average	Vertical	11.1	33.2	44.3	54.0	-9.7
2730.6	Peak	Horizontal	10.8	33.2	44.0	74.0	-30.0
2730.6	Average	Horizontal	6.9	33.2	40.1	54.0	-13.9
3640.8	Peak	Vertical	5.6	36.2	41.8	74.0	-32.2
3640.8	Average	Vertical	-3.6	36.2	32.6	54.0	-21.4
3640.8	Peak	Horizontal	6.0	36.2	42.2	74.0	-31.8
3640.8	Average	Vertical	-3.9	36.2	32.3	54.0	-21.7
4551.0	Peak	Vertical	6.4	37.7	44.1	74.0	-29.9
4551.0	Average	Vertical	-0.3	37.7	37.4	54.0	-16.6
4551.0	Peak	Horizontal	6.6	37.7	44.3	74.0	-29.7
4551.0	Average	Horizontal	-0.9	37.7	36.8	54.0	-17.2
5461.2	Peak	Vertical	5.7	39.9	45.6	74.0	-28.4
5461.2	Average	Vertical	-2.4	39.9	37.5	54.0	-16.5
5461.2	Peak	Horizontal	6.2	39.9	46.1	74.0	-27.9
5461.2	Average	Horizontal	-2.7	39.9	37.2	54.0	-16.8
6371.4*	Peak	Vertical	5.0	40.7	45.7	74.0	-28.3
6371.4*	Average	Vertical	-5.6	40.7	35.1	54.0	-9.5
6371.4*	Peak	Horizontal	5.4	40.7	46.1	74.0	-27.9
6371.4*	Average	Horizontal	-5.7	40.7	35.0	54.0	-19.0

Frequency (MHz)	Detector	Antenna Polarity	Receiver Reading (dB $\mu$ V)	Correction Factor (dB)	Field Strength (dB $\mu$ V/m)	Limit (dB $\mu$ V/m)	Margin (dB)
7281.6	Peak	Vertical	7.4	42.9	50.3	74.0	-23.7
7281.6	Average	Vertical	1.7	42.9	44.6	54.0	-9.4
7281.6	Peak	Horizontal	8.3	42.9	51.2	74.0	-22.8
7281.6	Average	Horizontal	3.2	42.9	46.1	54.0	-7.9
8191.8	Peak	Vertical	5.8	44.4	50.2	74.0	-23.8
8191.8	Average	Vertical	0.8	44.4	45.2	54.0	-8.8
8191.8	Peak	Horizontal	6.7	44.4	51.1	74.0	-22.9
8191.8	Average	Horizontal	0.1	44.4	44.5	54.0	-9.5
9102.0	Peak	Vertical	5.0	45.6	50.6	74.0	-23.4
9102.0	Average	Vertical	-6.6	45.6	39.0	54.0	-15.0
9102.0	Peak	Horizontal	5.1	45.6	50.7	74.0	-23.3
9102.0	Average	Horizontal	-6.5	45.6	39.1	54.0	-14.9

\*Emission is not in the restricted bands but was compared to the lower limit of the restricted bands.

**Table 2: Transmitting at the Lowest Frequency**

Frequency (MHz)	Detector	Antenna Polarity	Receiver Reading (dB $\mu$ V)	Correction Factor (dB)	Field Strength (dB $\mu$ V/m)	Limit (dB $\mu$ V/m)	Margin (dB)
1830.0*	Peak	Vertical	20.1	30.1	50.2	74.0	-23.8
1830.0*	Average	Vertical	17.0	30.1	47.1	54.0	-6.9
1830.0*	Peak	Horizontal	19.8	30.1	49.9	74.0	-24.1
1830.0*	Average	Horizontal	15.7	30.1	45.8	54.0	-8.2
2745.0	Peak	Vertical	13.5	33.3	46.8	74.0	-27.2
2745.0	Average	Vertical	10.7	33.3	44.0	54.0	-10.0
2745.0	Peak	Horizontal	14.5	33.3	47.8	74.0	-26.2
2745.0	Average	Horizontal	12.1	33.3	45.4	54.0	-8.6
3660.0	Peak	Vertical	7.3	36.2	43.5	74.0	-30.5
3660.0	Average	Vertical	0.7	36.2	36.9	54.0	-17.1
3660.0	Peak	Horizontal	8.3	36.2	44.5	74.0	-29.5
3660.0	Average	Vertical	2.8	36.2	39.0	54.0	-15.0
4575.0	Peak	Vertical	7.2	37.7	44.9	74.0	-29.1
4575.0	Average	Vertical	-0.5	37.7	37.2	54.0	-16.8
4575.0	Peak	Horizontal	8.3	37.7	46.0	74.0	-28.0
4575.0	Average	Horizontal	3.5	37.7	41.2	54.0	-12.8

Frequency (MHz)	Detector	Antenna Polarity	Receiver Reading (dB $\mu$ V)	Correction Factor (dB)	Field Strength (dB $\mu$ V/m)	Limit (dB $\mu$ V/m)	Margin (dB)
5490.0	Peak	Vertical	6.2	39.9	46.1	74.0	-27.9
5490.0	Average	Vertical	-2.4	39.9	37.5	54.0	-16.5
5490.0	Peak	Horizontal	5.7	39.9	45.6	74.0	-28.4
5490.0	Average	Horizontal	-3.6	39.9	36.3	54.0	-17.7
6405.0*	Peak	Vertical	4.9	40.8	45.7	74.0	-28.3
6405.0*	Average	Vertical	-5.8	40.8	35.0	54.0	-9.3
6405.0*	Peak	Horizontal	5.4	40.8	46.2	74.0	-27.8
6405.0*	Average	Horizontal	-5.8	40.8	35.0	54.0	-19.0
7320.0	Peak	Vertical	7.4	43.0	50.4	74.0	-23.6
7320.0	Average	Vertical	0.1	43.0	43.1	54.0	-10.9
7320.0	Peak	Horizontal	6.9	43.0	49.9	74.0	-24.1
7320.0	Average	Horizontal	0.3	43.0	43.3	54.0	-10.7
8235.0	Peak	Vertical	6.7	44.5	51.2	74.0	-22.8
8235.0	Average	Vertical	0.0	44.5	44.5	54.0	-9.5
8235.0	Peak	Horizontal	6.6	44.5	51.1	74.0	-22.9
8235.0	Average	Horizontal	0.2	44.5	44.7	54.0	-9.3
9150.0	Peak	Vertical	4.4	45.6	50.0	74.0	-24.0
9150.0	Average	Vertical	-5.6	45.6	40.0	54.0	-14.0
9150.0	Peak	Horizontal	4.3	45.6	49.9	74.0	-24.1
9150.0	Average	Horizontal	-6.7	45.6	38.9	54.0	-15.1

\*Emission is not in the restricted bands but was compared to the lower limit of the restricted bands.

**Table 3: Transmitting at the Middle Frequency**

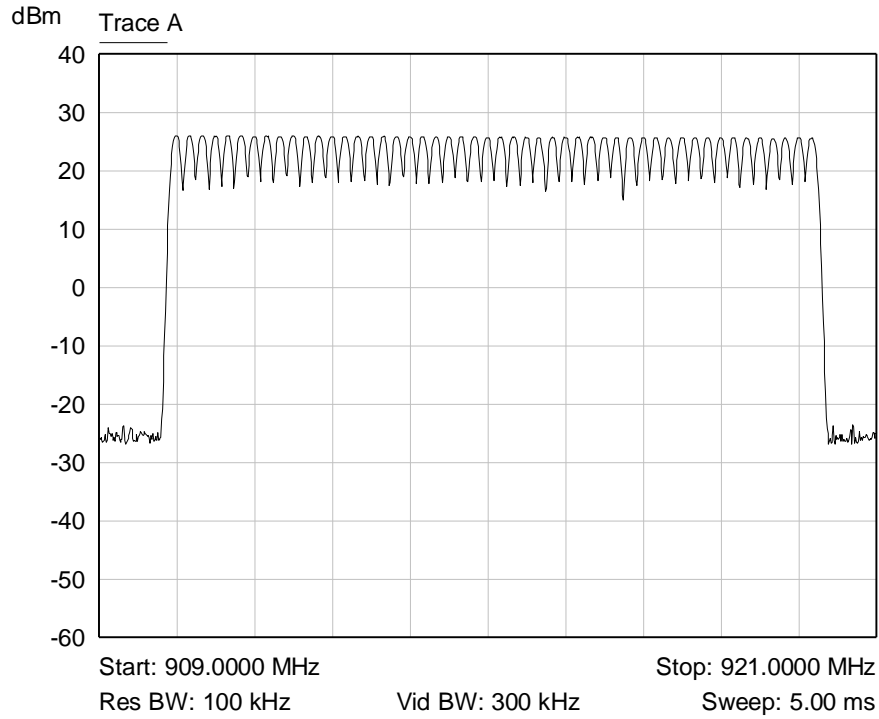
Frequency (MHz)	Detector	Antenna Polarity	Receiver Reading (dB $\mu$ V)	Correction Factor (dB)	Field Strength (dB $\mu$ V/m)	Limit (dB $\mu$ V/m)	Margin (dB)
1840.0*	Peak	Vertical	14.2	30.2	44.4	74.0	-29.6
1840.0*	Average	Vertical	12.2	30.2	42.4	54.0	-11.6
1840.0*	Peak	Horizontal	15.7	30.2	45.9	74.0	-28.1
1840.0*	Average	Horizontal	11.5	30.2	41.7	54.0	-12.3
2760.0	Peak	Vertical	9.6	33.3	42.9	74.0	-31.1
2760.0	Average	Vertical	3.0	33.3	36.3	54.0	-17.7
2760.0	Peak	Horizontal	8.6	33.3	41.9	74.0	-32.1
2760.0	Average	Horizontal	3.8	33.3	37.1	54.0	-16.9

Frequency (MHz)	Detector	Antenna Polarity	Receiver Reading (dB $\mu$ V)	Correction Factor (dB)	Field Strength (dB $\mu$ V/m)	Limit (dB $\mu$ V/m)	Margin (dB)
3680.0	Peak	Vertical	5.6	36.3	41.9	74.0	-32.1
3680.0	Average	Vertical	-3.8	36.3	32.5	54.0	-21.5
3680.0	Peak	Horizontal	5.4	36.3	41.7	74.0	-32.3
3680.0	Average	Vertical	-4.5	36.3	31.8	54.0	-22.2
4600.0	Peak	Vertical	6.3	37.8	44.1	74.0	-29.9
4600.0	Average	Vertical	-2.2	37.8	35.6	54.0	-18.4
4600.0	Peak	Horizontal	6.4	37.8	44.2	74.0	-29.8
4600.0	Average	Horizontal	-2.2	37.8	35.6	54.0	-18.4
5520.0	Peak	Vertical	5.6	40.0	45.6	74.0	-28.4
5520.0	Average	Vertical	-4.3	40.0	35.7	54.0	-18.3
5520.0	Peak	Horizontal	5.1	40.0	45.1	74.0	-28.9
5520.0	Average	Horizontal	-4.0	40.0	36.0	54.0	-18.0
6440.0*	Peak	Vertical	4.8	40.8	45.6	74.0	-28.4
6440.0*	Average	Vertical	-5.9	40.8	34.9	54.0	-12.6
6440.0*	Peak	Horizontal	5.1	40.8	45.9	74.0	-28.1
6440.0*	Average	Horizontal	-5.2	40.8	35.6	54.0	-18.4
7360.0	Peak	Vertical	3.7	43.1	46.8	74.0	-27.2
7360.0	Average	Vertical	-3.5	43.1	39.6	54.0	-14.4
7360.0	Peak	Horizontal	5.4	43.1	48.5	74.0	-25.5
7360.0	Average	Horizontal	-2.3	43.1	40.8	54.0	-13.2
8280.0	Peak	Vertical	4.9	44.5	49.4	74.0	-24.6
8280.0	Average	Vertical	-4.2	44.5	40.3	54.0	-13.7
8280.0	Peak	Horizontal	5.0	44.5	49.5	74.0	-24.5
8280.0	Average	Horizontal	-3.1	44.5	41.4	54.0	-12.6
9200.0	Peak	Vertical	5.0	45.7	50.7	74.0	-23.3
9200.0	Average	Vertical	-6.3	45.7	39.4	54.0	-14.6
9200.0	Peak	Horizontal	4.4	45.7	50.1	74.0	-23.9
9200.0	Average	Horizontal	-6.4	45.7	39.3	54.0	-14.7

\*Emission is not in the restricted bands but was compared to the lower limit of the restricted bands.

**Table 4: Transmitting at the Highest Frequency**





**Graph 10: Plots Showing All Channels Operate Within the Authorized Frequency Band**

**Result**

The radiated spurious emissions, including those outside the restricted bands, met the limits specified in §15.209; therefore, the EUT complies with the specification

## 7 Test Procedures and Test Equipment

### 7.1 Direct Connection at the Antenna Port Test

Type of Equipment	Manufacturer	Model Number	Asset Number	Date of Last Calibration	Due Date of Calibration
Spectrum Analyzer/Receiver	Rohde & Schwarz	ESU40	V033119	08/05/2020	08/05/2021
6 dB Attenuator	Pasternack	PE7004-6	V033645	01/12/2021	01/12/2022
Low Loss Cable	N/A	N/A	V034173	01/12/2021	01/12/2022

#### 7.1.1 Test Configuration Block Diagram



Figure 1: Direct Connection at the Antenna Port Test

### 7.2 Radiated Emissions

The radiated emissions from the EUT were measured using a spectrum analyzer with a quasi-peak adapter for peak and quasi-peak readings.

A preamplifier with a fixed gain of 51 dB was used to increase the sensitivity of the measuring instrumentation. The quasi-peak adapter uses a bandwidth of 120 kHz, with the spectrum analyzer's resolution bandwidth set at 1 MHz, for readings in the 30 to 1000 MHz frequency ranges. For frequencies below 30 MHz, a 9 kHz resolution Bandwidth was used.

A loop antenna was used to measure frequencies below 30 MHz. A biconilog antenna was used to measure the frequency range of 30 to 1000 MHz, at a distance of 3 meters from the EUT. The readings obtained by these antennas are correlated to the levels obtained with a tuned dipole antenna by adding antenna factors. A double-ridged guide antenna was used to measure the emissions at frequencies above 1000 MHz at a 3 meter or 1 meter distance from the EUT.

The configuration of the EUT was varied to find the maximum radiated emission. The EUT was connected to the peripherals listed in Section 2.3 via the interconnecting cables listed in Section 2.4. A technician manually manipulated these interconnecting cables to obtain worst-case radiated emissions. The EUT was rotated 360 degrees, and the antenna height was varied from 1 to 4 meters to find the maximum radiated emission. Where there were multiple interface ports all of the same type, cables are either placed on all of the ports or cables added to these ports until the emissions do not increase by more than 2 dB.

Desktop EUT are measured on a non-conducting table 0.8 meters above the ground plane. For frequencies above 1000 MHz, the EUT is placed on a table 1.5 meters above the ground plane. The table is placed on a

turntable, which is level with the ground plane. For equipment normally placed on floors, the equipment shall be placed directly on the turntable.

For radiated emissions testing that is performed at distances closer than the specified distance; an inverse proportionality factor of 20 dB per decade is used to normalize the measured data for determining compliance.

Type of Equipment	Manufacturer	Model Number	Asset Number	Date of Last Calibration	Due Date of Calibration
Spectrum Analyzer/Receiver	Rohde & Schwarz	ESU40	V033119	08/05/2020	08/05/2021
Spectrum Analyzer	Hewlett Packard	8566B	V034141	05/12/2020	05/12/2021
Quasi-Peak Detector	Hewlett Packard	85650A	V033345	05/11/2020	05/11/2022
Loop Antenna	EMCO	6502	V034216	02/03/2021	02/03/2023
Biconilog Antenna	EMCO	3142E-PA	V035736	06/24/2020	06/24/2022
Double Ridged Guide Antenna	EMCO	3115	V033469	01/25/2021	01/25/2023
Standard Gain Horn	ETS-Lindgren	3160-09	V034223	ICO	ICO
High Frequency Amplifier	Miteq	AFS4-001018000-35-10P-4	V033997	01/12/2021	01/12/2022
900 MHz High Pass Filter	Micro-Tronics	HPM50108-03	V034185	01/12/2021	01/12/2022
6' High Frequency Cable	Microcoax	UFB197C-0-0720-000000	V033638	01/12/2021	01/12/2022
20' High Frequency Cable	Microcoax	UFB197C-1-3120-000000	V033979	01/12/2021	01/12/2022
3 Meter Radiated Emissions Cable Wanship Upper Site	Microcoax	UFB205A-0-4700-000000	V033639	01/12/2021	01/12/2022
Test Software (FCC)	VPI Labs	Revision 01	V035673	N/A	N/A

**Table 5: List of equipment used for radiated emissions testing.**

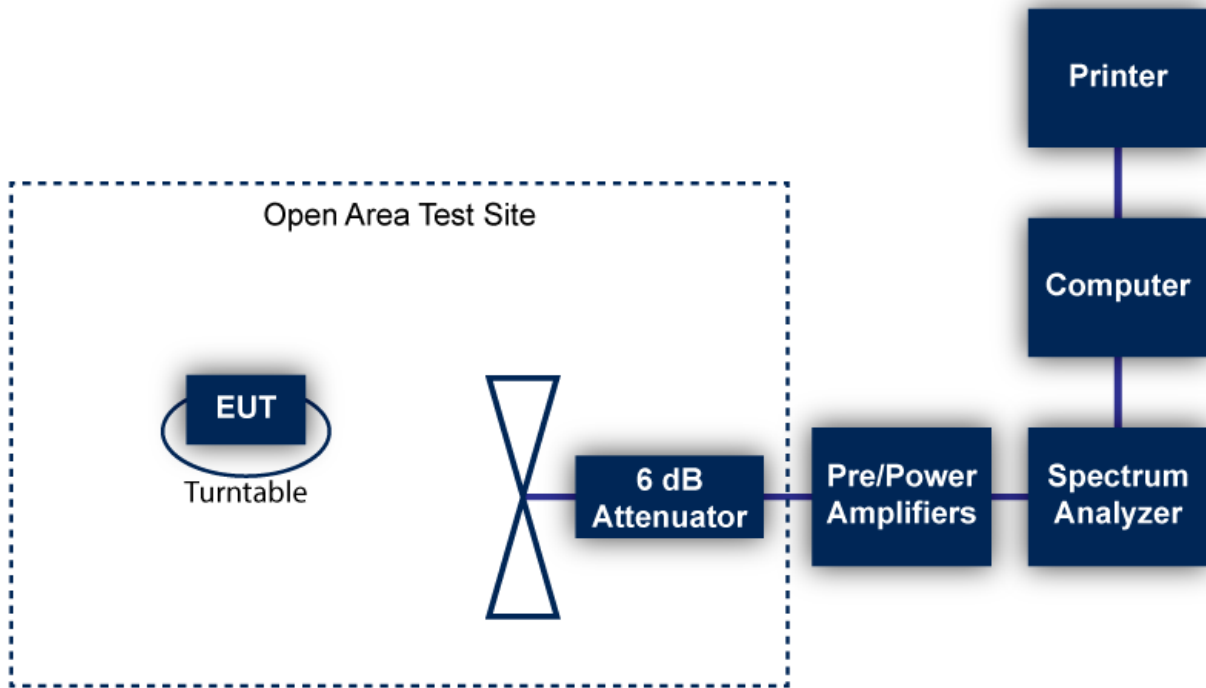


Figure 2: Radiated Emissions Test

### 7.3 Equipment Calibration

All applicable equipment is calibrated using either an independent calibration laboratory or VPI Laboratories, Inc. personnel at intervals defined in ANSI C63.4:2014 following outlined calibration procedures. All measurement instrumentation is traceable to the National Institute of Standards and Technology (NIST). Supporting documentation relative to tractability is on file and is available for examination upon request.

### 7.4 Measurement Uncertainty

Test	Uncertainty ( $\pm$ dB)	Confidence (%)
Conducted Emissions	2.8	95
Radiated Emission (9 kHz to 30 MHz)	3.3	95
Radiated Emissions (30 MHz to 1 GHz)	3.4	95
Radiated Emissions (1 GHz to 18 GHz)	5.0	95
Radiated Emissions (18 GHz to 40 GHz)	4.1	95

## 8 Photographs



**Photograph 1: Front View Radiated Emissions Worst-Case Configuration – Below 1000 MHz**



**Photograph 2: Back View Radiated Emissions Worst-Case Configuration – 30 to 1000 MHz**



**Photograph 3: Front View Radiated Emissions Configuration – Above 1000 MHz**



**Photograph 4: Back View Radiated Emissions Configuration – Above 1000 MHz**



**Photograph 5: Front View of the EUT**

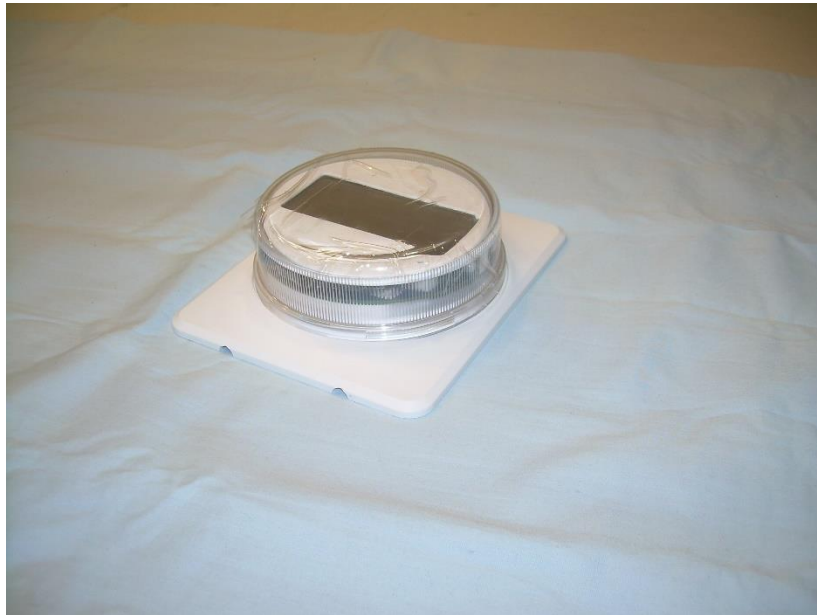


**Photograph 6: Back View of the EUT**





**Photograph 7: Side View of the EUT**

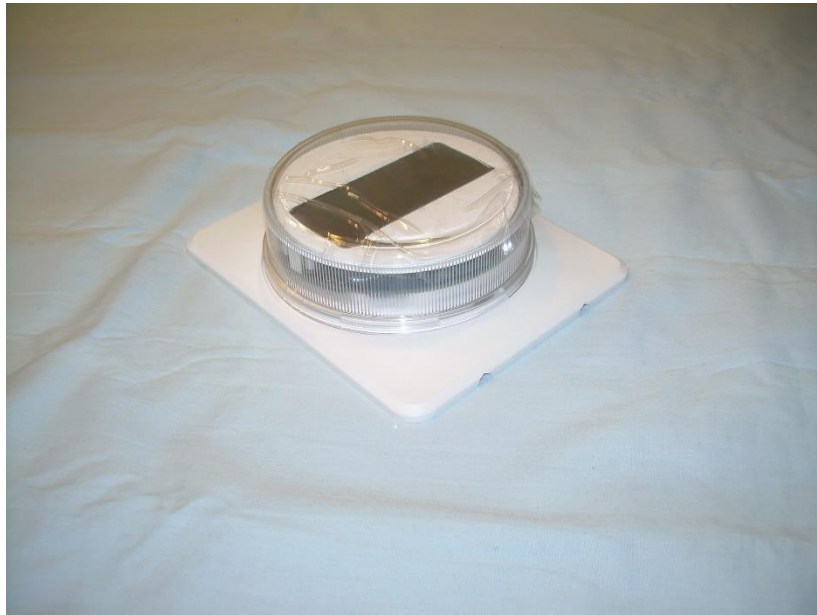


**Photograph 8: Side View of the EUT**

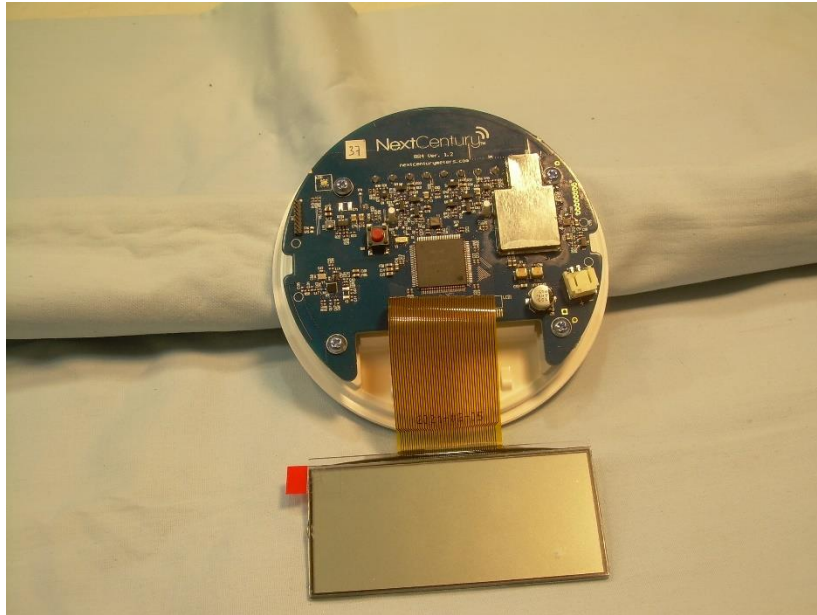




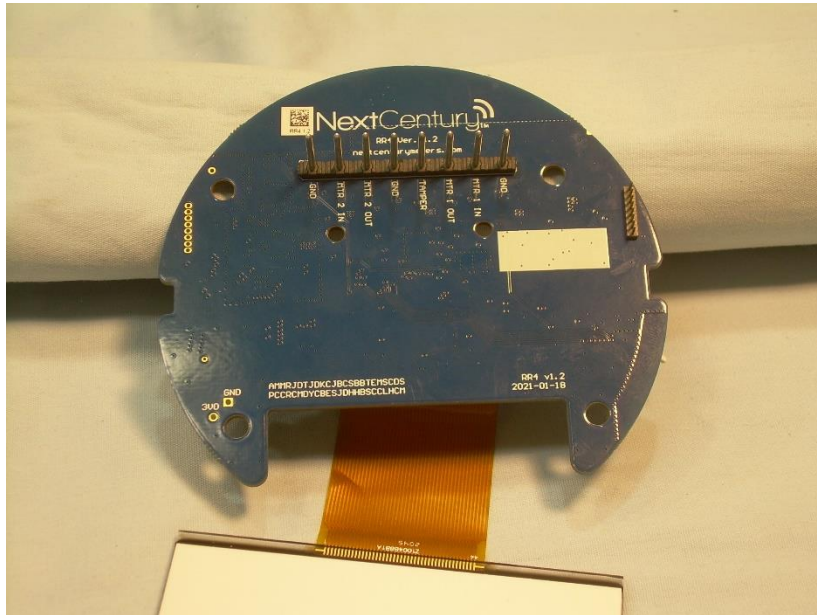
**Photograph 9: Side View of the EUT**



**Photograph 10: Side View of the EUT**



**Photograph 11: Front View of the PCB**



**Photograph 12: Back View of the PCB**







**--- End of Report ---**