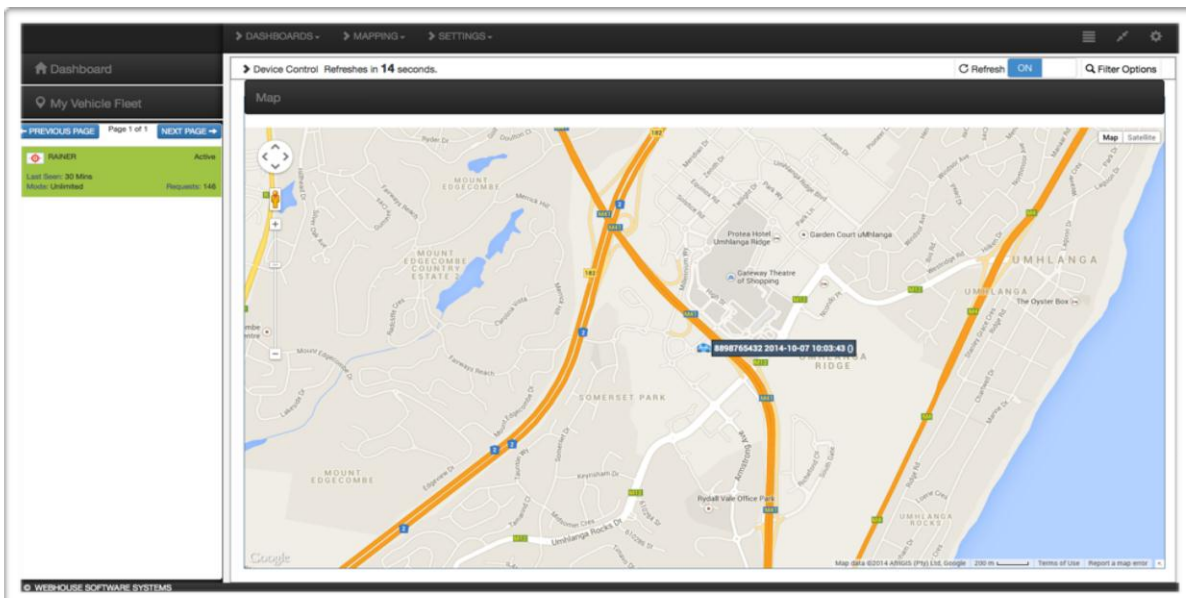


SWAT ENHANCED

User Guide

Version 2 - 10 September 2015



Contents

- Logging In
- Account Dashboard
- Setup Users
- Setup Geo-Place
- Vehicle Alerts
- The Mapping page

Logging In

Logging In For The First Time

Check your email inbox for an email from SWATno-reply@karrecovery.com. There you will find an email containing a temporary password to access your account for the first time and a link to the SWAT ENHANCED website, karrecovery.com. Please note that the email you provided the SWAT customer service department is your username.

Forgotten Password

Should you forget your password, click on “Forgotten Password” from the Login Screen. An email will be sent to your mailbox with instructions on how to reset your password.

Account Dashboard

The Account Dashboard Page

The account dashboard contains all the information relevant to your account. You will see the following items displayed:

- List of vehicles linked to your account (Device description can be edited)
- License Plate (Hovering over the license plate will tell you when the device in that vehicle last reported a position)
- Product (Swat Enhanced or SWAT)
- Status (Tell you whether your account is active or disabled)
- Map Mode (Number of times you can go to the Map Page)
- Requests (Number of available commands that can be sent to the device for the month)
- IO Status (Not Applicable)
- Alerts (Number of alerts setup for that vehicle)
- Options (Vehicle icon is a link that take you to mapping page for immediate tracking)

Top Menu Links

All pages on the website contain links to all of the pages available.

Dashboard = Account Page, is the account link is to the main page or account dashboard.

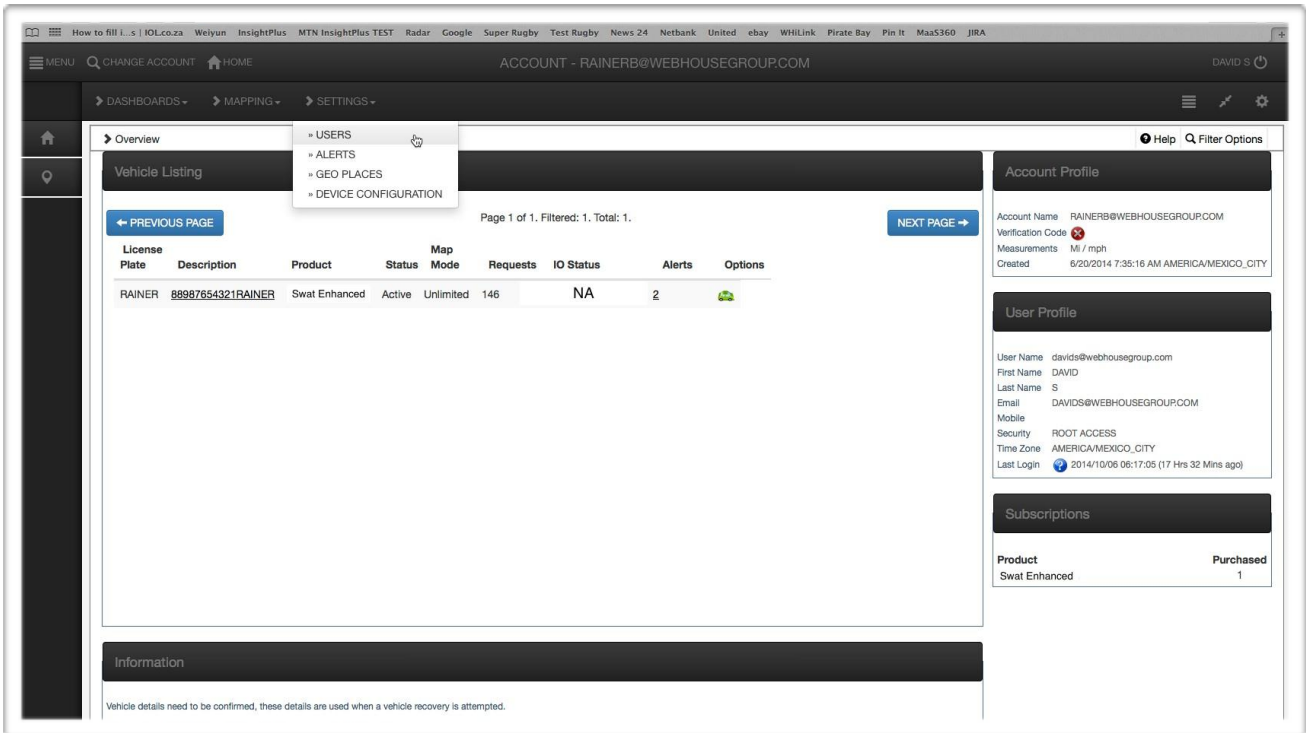
Mapping = Map Page, takes you to the mapping page that allows you to send commands to the device, provides communication history and location history.

Settings = Users Page, allows you to edit your personal information.

Settings = Alerts Page, allows you to setup your email/text notifications.

Settings = Geo Places, allows you to create Geo Place boundaries.

Settings = Device Configuration, allows you to edit your vehicle information and turn on the Speed and Geo Place notifications.

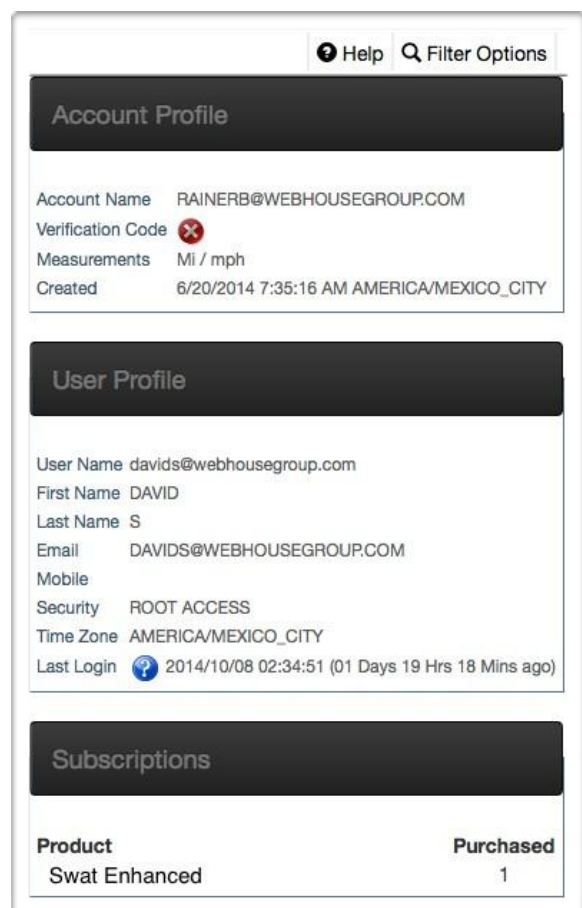


On the right of the Account Dashboard, will be the Account Profile, User Profile and a list of your subscriptions

Account Profile will show the current unit of measurement, whether or not a verification code has been set and the date and time the account was created. Please select the red icon next to “Verification Code” to see your code. The verification code is used to identify you as an Account Administrator. It can be a word, number or any combination of letters and numbers.

User Profile will show the user contact information we have on record, email address (login), time zone on your account and the last time you logged in.

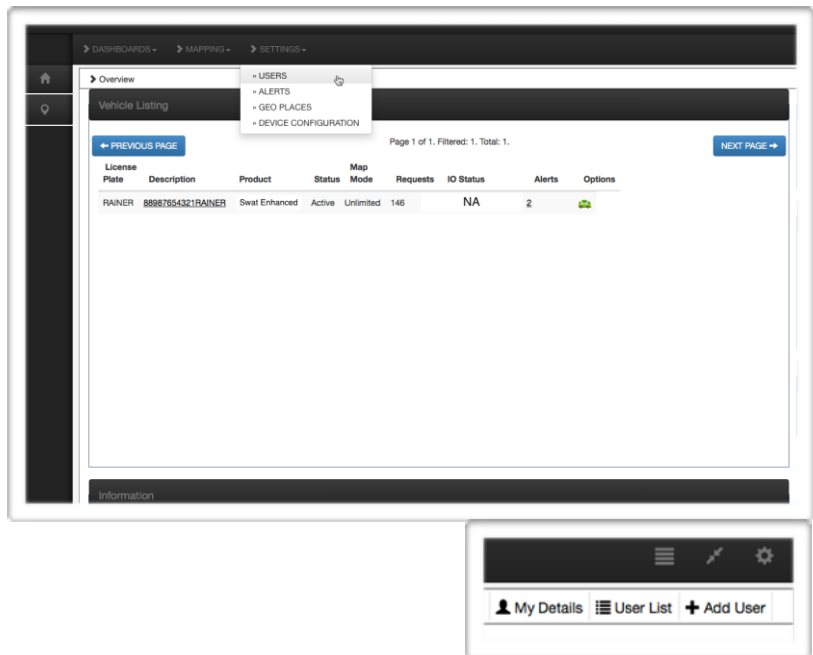
Subscriptions displays all subscription or products active on the account



Setup Users

How To Setup New Users

You can easily setup new users by selecting the Settings button from the top menu bar and selecting Users. The page that loads contains your user details which can be edited should it be required. It is important that you setup your verification code as soon as possible as it will be required to verify your identity in an emergency situation.



At the top right of the screen you will see 3 options:

My Details	Provides a view of the details we have loaded for you. From here you can update your contact details, setup a verification code*, edit your password and adjust your time zone setting.
User List	Gives a view of all users for the account along with the option to edit their details
Add User	Allows you to setup a new user on the system.

* The verification code will be required to verify your identity in an emergency situation.

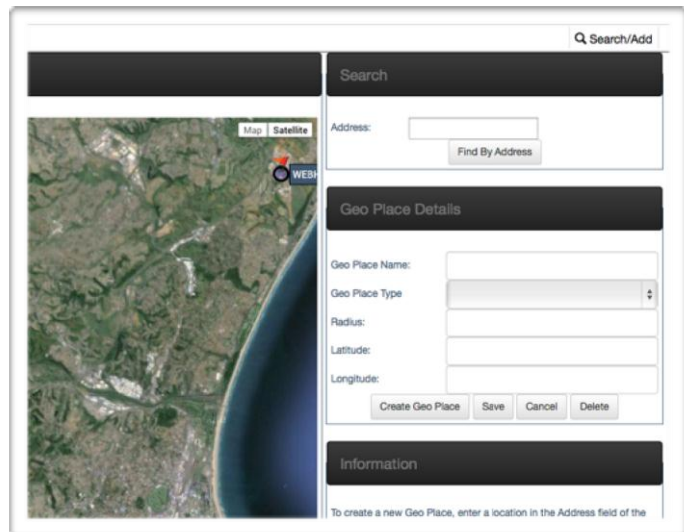
Select Add User and you will be required to input the new user’s details and select Save.

Setup Geo-Place

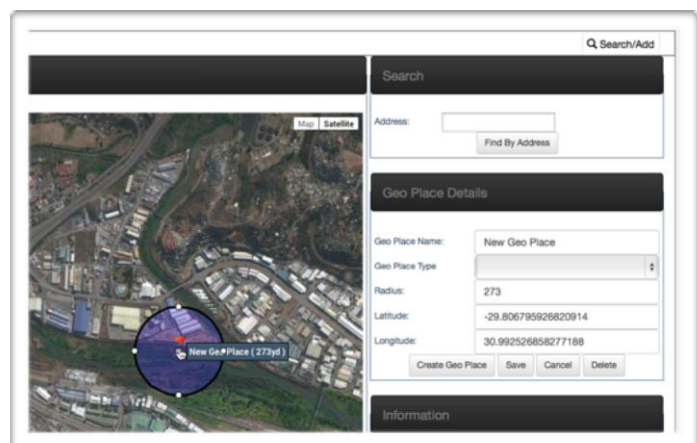
How To Setup A Geo-Place

A Geo-Place can be used to define a perimeter and provide alerts when a vehicle enters or exits the perimeter. Only 1 Geo-Place per vehicle can be active at any one time.

From the Settings button select Geo-Place which will load the Geo-Place Map. Select Search/Add from the top right of the map which will expand the Geo-Place details menu.



A Geo-Place can either be setup by inputting an address or by selecting Create Geo Place which will place a circle on the map. The circle can be moved by simply clicking and dragging the flag to the desired location on the map. Provide a name for the location and select Save which will save the name and location.



The Geo-Place then needs to be enabled from the Device Configuration Page.

Define Vehicle Alerts

How To Configure Vehicle Triggers

Vehicle triggers are setup on the Device Configuration page and accessed from the Settings button on the top menu bar.

When you select the desired vehicle from drop down, the vehicle details will load. Please ensure the information is accurate as it will be crucial in the event of a recovery.

Current alert settings will be shown and can be adjusted if required. Update the desired alert speed from the drop down menu or select Not Set to leave the trigger deactivated.

The screenshot displays the 'Vehicle Details' configuration page. On the left, there is a list of fields for vehicle information: Vehicle (88987654321RAINER), License Plate (RAINER), Make (FERARRI), Model (458 SPIDER), Color (RED), Vin No (88987654321RAINER), Vehicle Description (88987654321RAINER), Custom Description (88987654321RAINER), Grouping (NO GROUPS), and Map Icon (a row of icons). An 'Update' button is located at the bottom left. On the right, the 'Alert Settings' section includes 'Vehicle Settings' with a Speeding dropdown set to 75, and 'Geo Place Settings' with a Circle 1 dropdown set to HOME. A 'Configure Geo Places' button is positioned below these settings. At the bottom right, an 'Information' section provides instructions: 'Set your Speeding threshold above. To turn off the Speeding threshold, select Disabled.' and 'Set your Geo Place by selecting one of the locations above. To create a new Geo Place, click the "Configure Geo Places" button to be sent to the Geo Places page. To disable Geo Places, select Disabled.'

One of the configured Geo-Places can be selected or a new one setup by selecting Configure Geo-Places. Only one Geo-Place can be active per vehicle at any one time.

Select Update when complete and the new settings will be sent to the vehicle within a few minutes.

The Alerts Page

Distribution of alerts is configured from the Alerts page, accessed from the Settings button on the top menu bar.

Under the Alert Listing section you will see the alerts that have been setup previously. There are 5 alerts that can be setup:

Geo Warning Enter	Triggers an alert when the vehicle enters the defined Geo-Place
Geo Warning Exit	Triggered when the vehicle exits the defined Geo-Place
Speed Trap	Triggers an alert when the vehicle exceeds the defined speed
Vehicle Battery Disconnect	Triggered if the vehicle battery is disconnected
Vehicle Battery Low	Triggers alert if the battery charge is low

Each alert can be distributed as either an email or SMS.

The Triggered Alerts section contains all previous alerts with the time and date, alert type and vehicle.

How To Setup Alerts

Alerts are setup from the Alerts page. Alerts can be setup for either a group or individual vehicles.

From the drop down menus select either the group or vehicle, then select the type of alert from the options in the Alert Message field. Should you be on the system and would like a pop-up alert, select the Yes box from the On Screen Alert option.

Enter the email address and mobile number you would like the alert sent to and choose Save. Cell numbers must be entered with +1 without spaces and dashes. All emails or cell numbers must be separated by a semicolon (;).

Sample Cell Numbers: +19491119999;
+19492229999

Sample Emails: swatplus1@swatplus.com; swatplus2@swatplus.com

The Alert is then saved and will trigger should the parameters be breached.

The process needs to be repeated for each alert type, per vehicle or group.

Note: You may enter your cell number as an email address by formatting your cell number as an email address. Check with your cell provider for the format. Here are some popular samples:

T-Mobile

Format: 10-digit cell phone number @ tmomail.net

Example: 3335551111@tmomail.net

Verizon Wireless

Format: 10-digit cell phone number @ vtext.com

Example: 3335551111@vtext.com

Sprint PCS

Format: 10-digit cell phone number @ messaging.sprintpcs.com

Example: 3335551111@messaging.sprintpcs.com

Filter Options

Server Alert Details

Vehicle Groups: NO GROUPS

Vehicle: SELECT ONE (1)

Alert Message:

On Screen Alert: Yes No

Email Address:

Mobile Numbers:

Save Clear

Information

Cingular Wireless

Format: 1 + 10-digit cell phone number @ cingularme.com

Example: 13335551111@cingularme.com

AT&T PCS

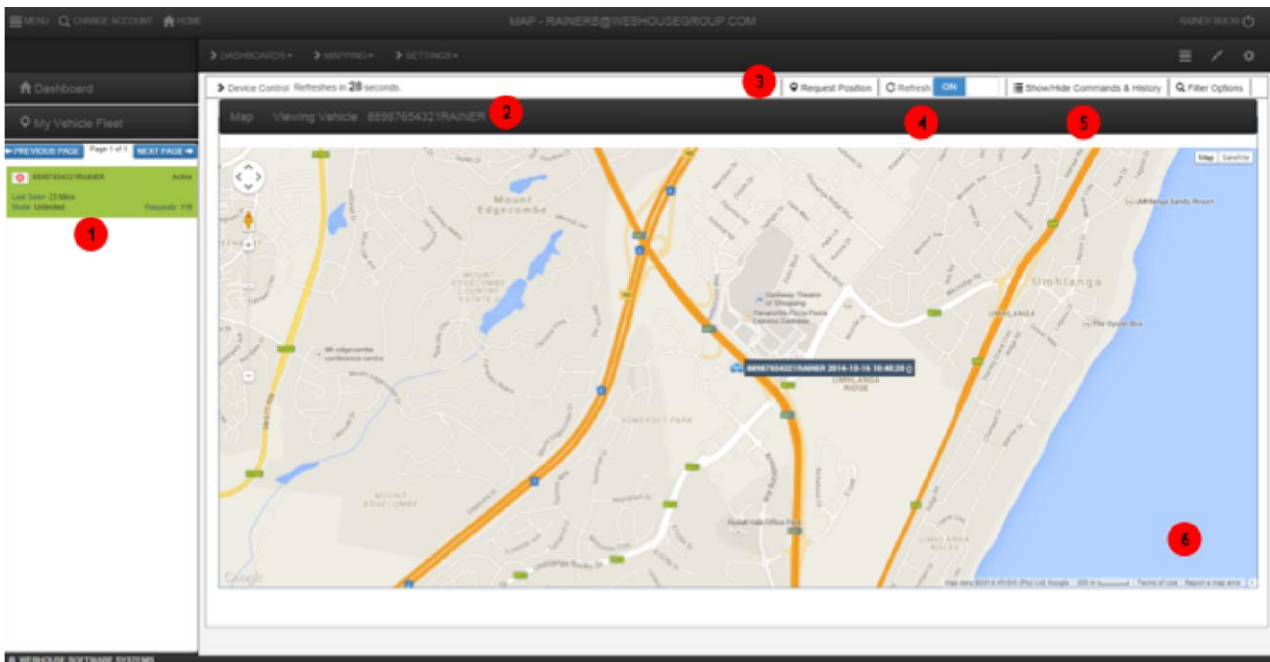
Format: 10-digit cell phone number @ mobile.att.net

Example 1: 3335551111@mobile.att.net

Example 2: 3335551111@txt.att.net

The Mapping Page

Layout Of The Mapping Page



1. Vehicle List	Shows a list of all your vehicles
2. Vehicle Identifier	Displays the name of the current vehicle being viewed
3. Request Position	Selecting the Request Position button will return the latest position of the vehicle currently selected
4. Refresh Slider	Toggle on/off to disable the map auto refresh function
5. Command & History	Command and History view
6. Map	Map area

Note: If you have more than one vehicle on the account, when you go to the map page you must select the cross-hair next to the vehicle under vehicle list to interact with that specific vehicle. Otherwise, when you first arrive on the page, you will see an overview of all the vehicles on the map and will not be able to send commands to any of the vehicles until one is selected.

Command and History Functions

The Command and History view provides you with a list of commands you can push to the vehicle along with the current and previous messages from the vehicle.

Command that can be sent to the vehicle:

- Request Position

The History section can display either the latest list or previous list of messages the vehicle has reported back to the site.

Note: The vehicle icon and key icons on the map are color coded:

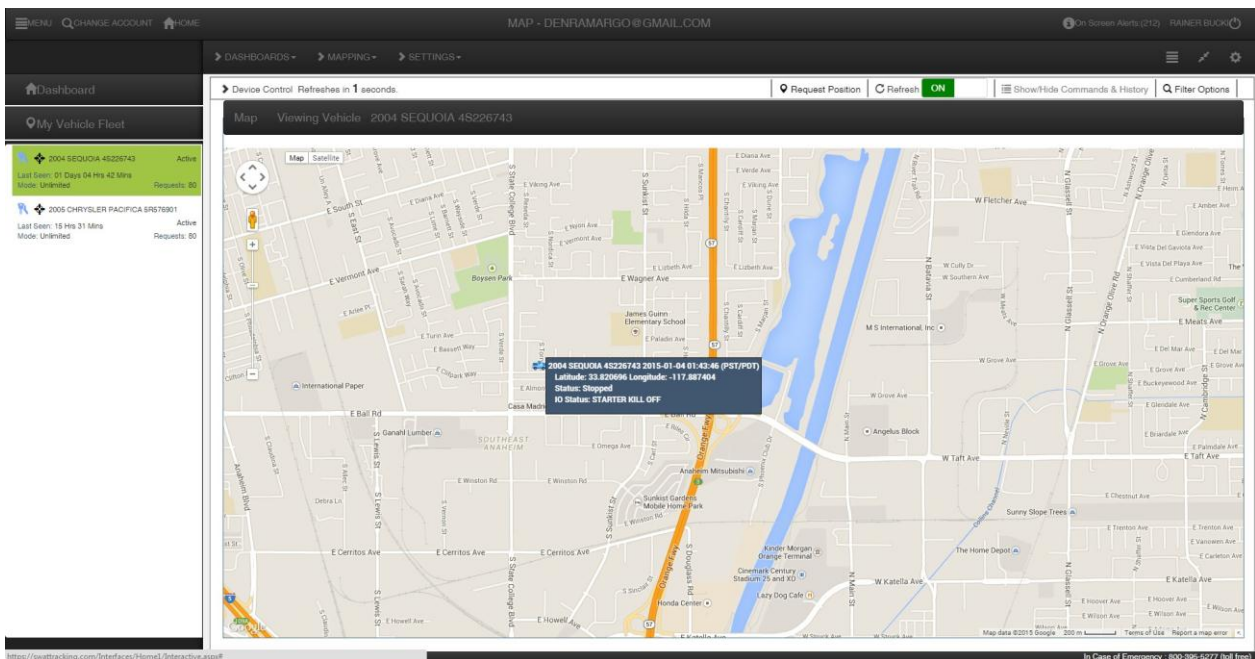
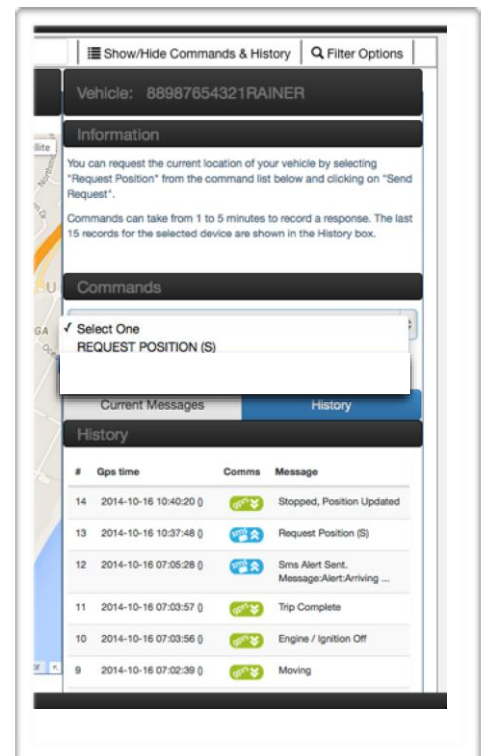
Blue = Ignition Off when last location was reported

Green = Ignition On when last location was reported

Anytime you click on the Vehicle label on the map it will display:


Latitude/Longitude

Status of the vehicle (Stopped or Moving)



Map View

You can toggle between the standard map view and satellite view by selecting the option on the top left of the map.

To zoom to street view, drag and drop the pegman icon () to the desired location and drop. You will see an estimated address based off of the latitude and longitude of the vehicle and the vehicle icon where the vehicle should be.

FCC Caution

1. Any Changes or modifications not expressly approved by the party responsible for compliance could void the user's authority to operate the equipment.
2. This Transmitter must not be co-located or operating in conjunction with any other antenna or transmitter.
3. This equipment complies with RF radiation exposure limits set forth for an uncontrolled environment.
4. This equipment should be installed and operated with minimum distance 35cm between the radiator& your body.

This equipment has been tested and found to comply with the limits for a Class B digital device, pursuant to Part 15 of the FCC Rules. These limits are designed to provide reasonable protection against harmful interference in a residential installation. This equipment generates uses and can radiate radio frequency energy and, if not installed and used in accordance with the instructions, may cause harmful interference to radio communications. However, there is no guarantee that interference will not occur in a particular installation. If this equipment does cause harmful interference to radio or television reception, which can be determined by turning the equipment off and on, the user is encouraged to try to correct the interference by one or more of the following measures:

- Reorient or relocate the receiving antenna.
 - Increase the separation between the equipment and receiver.
 - Connect the equipment into an outlet on a circuit different from that to which the receiver is connected.
 - Consult the dealer or an experienced radio/TV technician for help.
-

