

**Test Plot 1#: GSM 1900\_Vertical-Front\_Middle****DUT: 4G LTE USB Dongle; Type: Onyx4G; Serial: 17040500520**

Communication System: Generic GPRS-1 slots; Frequency: 1880 MHz; Duty Cycle: 1:8  
Medium parameters used:  $f = 1880$  MHz;  $\sigma = 1.55$  S/m;  $\epsilon_r = 52.185$ ;  $\rho = 1000$  kg/m<sup>3</sup>;  
Phantom section: Left Section

DASY5 Configuration:

- Probe: EX3DV4 - SN7441; ConvF(7.95, 7.95, 7.95); Calibrated: 2016/11/15;
- Sensor-Surface: 1.4mm (Mechanical Surface Detection)
- Electronics: DAE3 Sn379; Calibrated: 2016/10/4
- Phantom: Triple Flat Phantom 5.1C; Type: QD 000 P51 CA; Serial: 1130
- Measurement SW: DASY52, Version 52.8 (8);

**Area Scan (81x31x1):** Interpolated grid: dx=1.500 mm, dy=1.500 mm

Maximum value of SAR (interpolated) = 0.848 W/kg

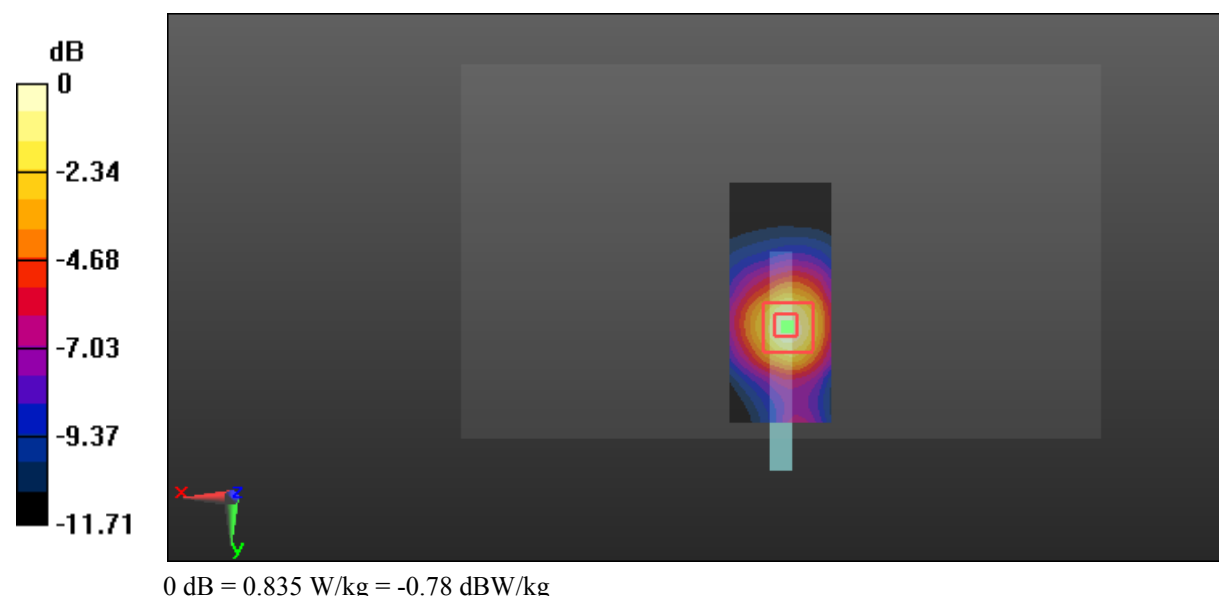
**Zoom Scan (5x5x7)/Cube 0:** Measurement grid: dx=8mm, dy=8mm, dz=5mm

Reference Value = 7.945 V/m; Power Drift = 0.12 dB

Peak SAR (extrapolated) = 0.968 W/kg

**SAR(1 g) = 0.570 W/kg; SAR(10 g) = 0.324 W/kg**

Maximum value of SAR (measured) = 0.835 W/kg



**Test Plot 2#: GSM 1900\_Horizontal-Up\_Low**

**DUT: 4G LTE USB Dongle; Type: Onyx4G; Serial: 17040500520**

Communication System: Generic GPRS-1 slots; Frequency: 1850.2 MHz; Duty Cycle: 1:8  
 Medium parameters used:  $f = 1850.2 \text{ MHz}$ ;  $\sigma = 1.524 \text{ S/m}$ ;  $\epsilon_r = 52.712$ ;  $\rho = 1000 \text{ kg/m}^3$  ;  
 Phantom section: Left Section

DASY5 Configuration:

- Probe: EX3DV4 - SN7441; ConvF(7.95, 7.95, 7.95); Calibrated: 2016/11/15;
- Sensor-Surface: 1.4mm (Mechanical Surface Detection)
- Electronics: DAE3 Sn379; Calibrated: 2016/10/4
- Phantom: Triple Flat Phantom 5.1C; Type: QD 000 P51 CA; Serial: 1130
- Measurement SW: DASY52, Version 52.8 (8);

**Area Scan (81x51x1):** Interpolated grid:  $dx=1.500 \text{ mm}$ ,  $dy=1.500 \text{ mm}$

Maximum value of SAR (interpolated) = 1.22 W/kg

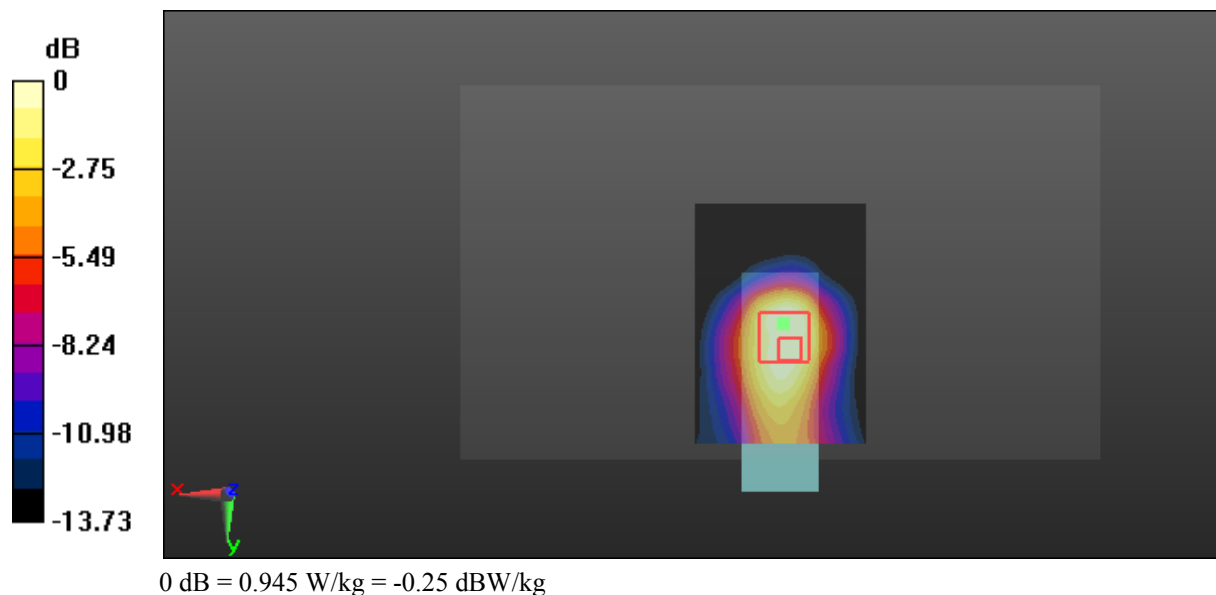
**Zoom Scan (5x5x7)/Cube 0:** Measurement grid:  $dx=8\text{mm}$ ,  $dy=8\text{mm}$ ,  $dz=5\text{mm}$

Reference Value = 8.649 V/m; Power Drift = -0.05 dB

Peak SAR (extrapolated) = 1.15 W/kg

**SAR(1 g) = 0.650 W/kg; SAR(10 g) = 0.355 W/kg**

Maximum value of SAR (measured) = 0.945 W/kg



**Test Plot 3#: GSM 1900\_Horizontal-Up\_Middle****DUT: 4G LTE USB Dongle; Type: Onyx4G; Serial: 17040500520**

Communication System: Generic GPRS-1 slots; Frequency: 1880 MHz; Duty Cycle: 1:8  
Medium parameters used:  $f = 1880$  MHz;  $\sigma = 1.55$  S/m;  $\epsilon_r = 52.185$ ;  $\rho = 1000$  kg/m<sup>3</sup> ;  
Phantom section: Left Section

DASY5 Configuration:

- Probe: EX3DV4 - SN7441; ConvF(7.95, 7.95, 7.95); Calibrated: 2016/11/15;
- Sensor-Surface: 1.4mm (Mechanical Surface Detection)
- Electronics: DAE3 Sn379; Calibrated: 2016/10/4
- Phantom: Triple Flat Phantom 5.1C; Type: QD 000 P51 CA; Serial: 1130
- Measurement SW: DASY52, Version 52.8 (8);

**Area Scan (81x51x1):** Interpolated grid: dx=1.500 mm, dy=1.500 mm

Maximum value of SAR (interpolated) = 1.59 W/kg

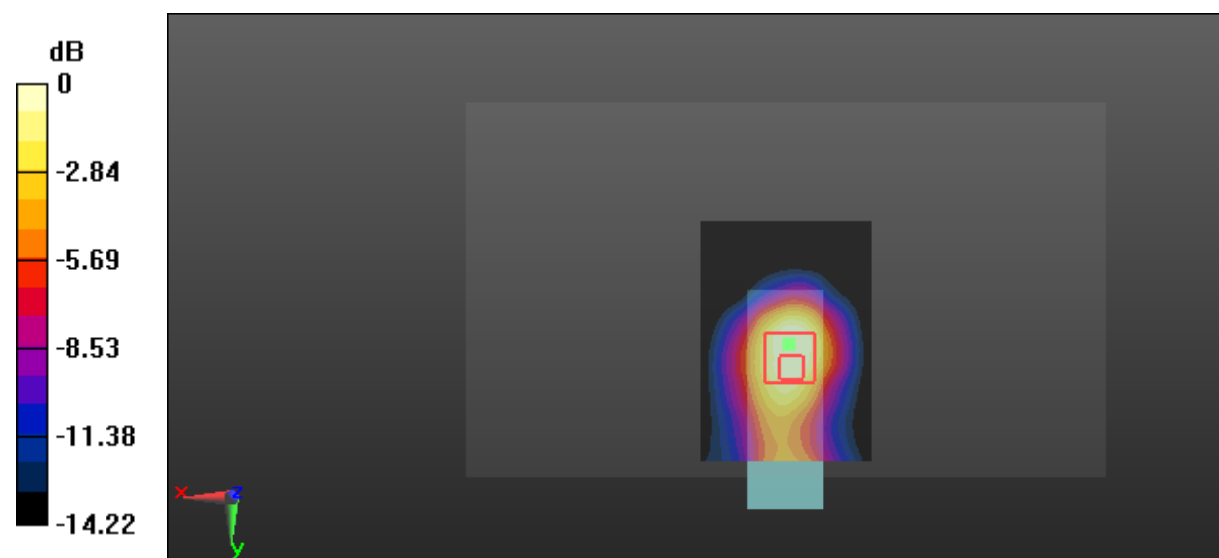
**Zoom Scan (5x5x7)/Cube 0:** Measurement grid: dx=8mm, dy=8mm, dz=5mm

Reference Value = 9.980 V/m; Power Drift = 0.19 dB

Peak SAR (extrapolated) = 1.55 W/kg

**SAR(1 g) = 0.901 W/kg; SAR(10 g) = 0.499 W/kg**

Maximum value of SAR (measured) = 1.28 W/kg



0 dB = 1.28 W/kg = 1.07 dBW/kg

**Test Plot 4#: GSM 1900\_Horizontal-Up\_High**

**DUT: 4G LTE USB Dongle; Type: Onyx4G; Serial: 17040500520**

Communication System: Generic GPRS-1 slots; Frequency: 1909.8 MHz; Duty Cycle: 1:8  
 Medium parameters used:  $f = 1909.8 \text{ MHz}$ ;  $\sigma = 1.584 \text{ S/m}$ ;  $\epsilon_r = 52.219$ ;  $\rho = 1000 \text{ kg/m}^3$  ;  
 Phantom section: Left Section

DASY5 Configuration:

- Probe: EX3DV4 - SN7441; ConvF(7.95, 7.95, 7.95); Calibrated: 2016/11/15;
- Sensor-Surface: 1.4mm (Mechanical Surface Detection)
- Electronics: DAE3 Sn379; Calibrated: 2016/10/4
- Phantom: Triple Flat Phantom 5.1C; Type: QD 000 P51 CA; Serial: 1130
- Measurement SW: DASY52, Version 52.8 (8);

**Area Scan (81x51x1):** Interpolated grid:  $dx=1.500 \text{ mm}$ ,  $dy=1.500 \text{ mm}$

Maximum value of SAR (interpolated) = 1.70 W/kg

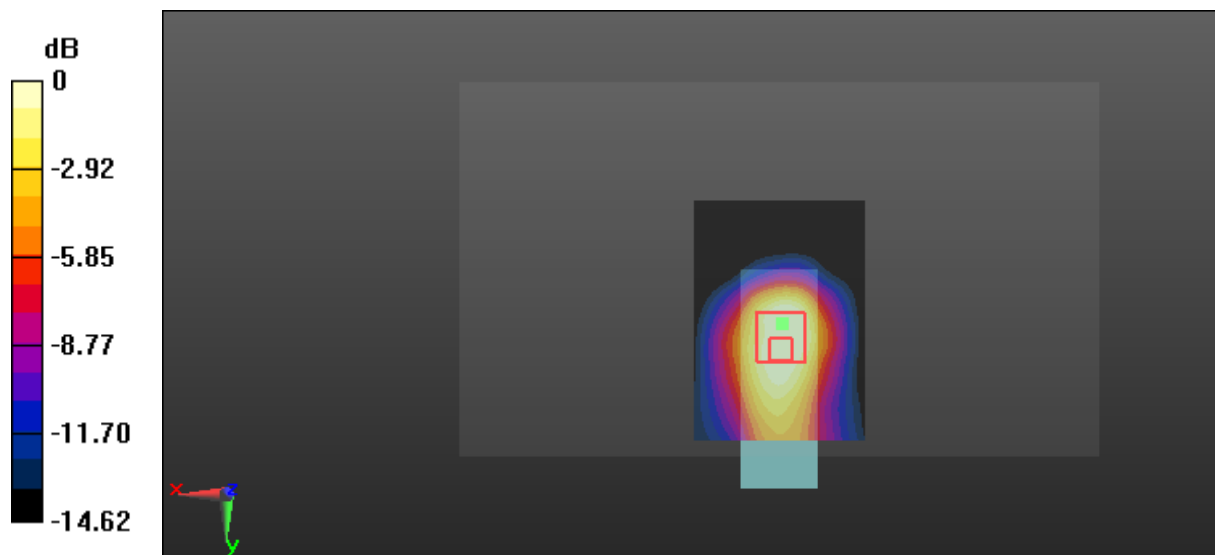
**Zoom Scan (5x5x7)/Cube 0:** Measurement grid:  $dx=8\text{mm}$ ,  $dy=8\text{mm}$ ,  $dz=5\text{mm}$

Reference Value = 8.920 V/m; Power Drift = 0.12 dB

Peak SAR (extrapolated) = 1.65 W/kg

**SAR(1 g) = 0.979 W/kg; SAR(10 g) = 0.525 W/kg**

Maximum value of SAR (measured) = 1.35 W/kg



0 dB = 1.35 W/kg = 1.30 dBW/kg

**Test Plot 5#: GSM 1900\_Body Top\_Middle****DUT: 4G LTE USB Dongle; Type: Onyx4G; Serial: 17040500520**

Communication System: Generic GPRS-1 slots; Frequency: 1880 MHz; Duty Cycle: 1:8  
Medium parameters used:  $f = 1880$  MHz;  $\sigma = 1.55$  S/m;  $\epsilon_r = 52.185$ ;  $\rho = 1000$  kg/m<sup>3</sup> ;  
Phantom section: Left Section

DASY5 Configuration:

- Probe: EX3DV4 - SN7441; ConvF(7.95, 7.95, 7.95); Calibrated: 2016/11/15;
- Sensor-Surface: 1.4mm (Mechanical Surface Detection)
- Electronics: DAE3 Sn379; Calibrated: 2016/10/4
- Phantom: Triple Flat Phantom 5.1C; Type: QD 000 P51 CA; Serial: 1130
- Measurement SW: DASY52, Version 52.8 (8);

**Area Scan (61x31x1):** Interpolated grid: dx=1.500 mm, dy=1.500 mm

Maximum value of SAR (interpolated) = 0.198 W/kg

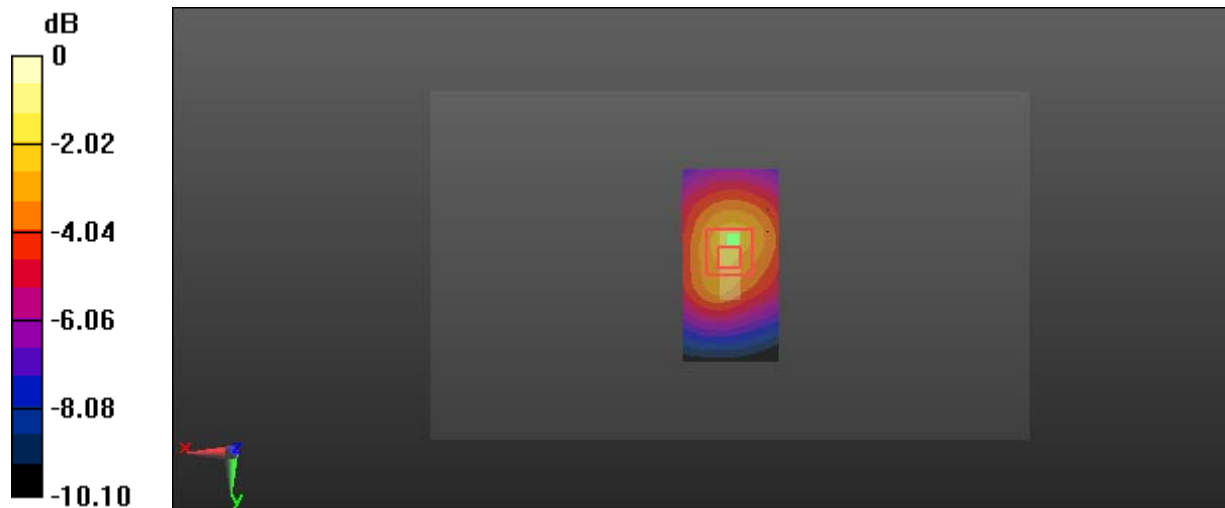
**Zoom Scan (5x5x7)/Cube 0:** Measurement grid: dx=8mm, dy=8mm, dz=5mm

Reference Value = 12.64 V/m; Power Drift = -0.04 dB

Peak SAR (extrapolated) = 0.385 W/kg

**SAR(1 g) = 0.202 W/kg; SAR(10 g) = 0.108 W/kg**

Maximum value of SAR (measured) = 0.335 W/kg



0 dB = 0.335 W/kg = -4.75 dBW/kg

**Test Plot 6#: PCS 1900\_ Horizontal-Down\_Low**

**DUT: 4G LTE USB Dongle; Type: Onyx4G; Serial: 17040500520**

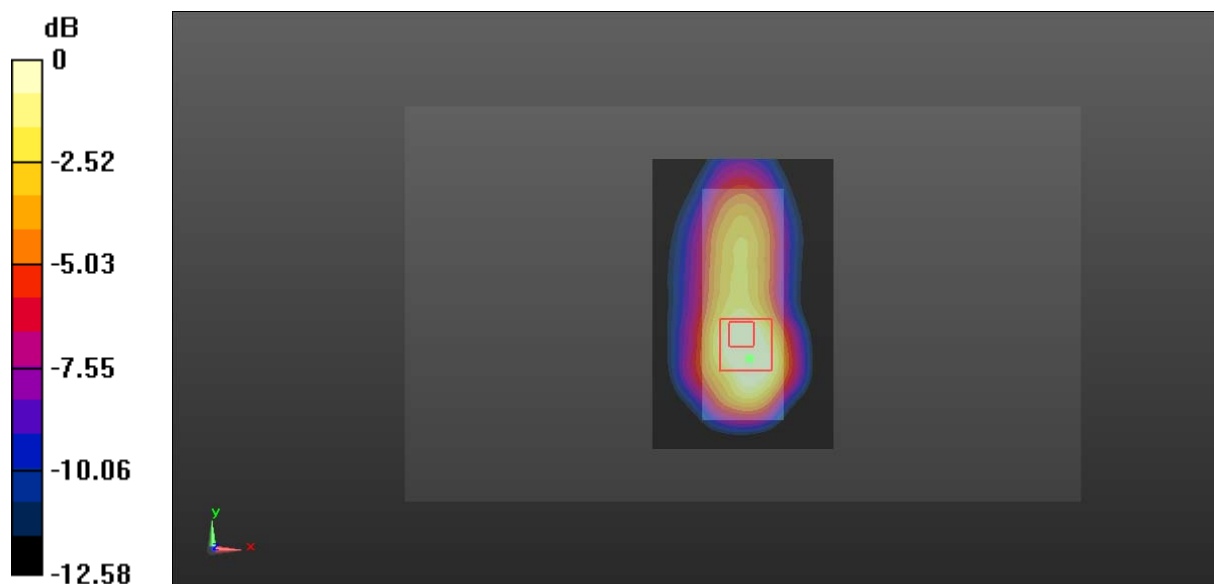
Communication System: Generic GPRS-1 slots; Frequency: 1850.2 MHz; Duty Cycle: 1:8  
 Medium parameters used:  $f = 1850.2 \text{ MHz}$ ;  $\sigma = 1.521 \text{ S/m}$ ;  $\epsilon_r = 53.028$ ;  $\rho = 1000 \text{ kg/m}^3$   
 Phantom section: Left Section

DASY5 Configuration:

- Probe: EX3DV4 - SN7441; ConvF(7.95, 7.95, 7.95); Calibrated: 2016/11/15;
- Sensor-Surface: 1.4mm (Mechanical Surface Detection)
- Electronics: DAE3 Sn379; Calibrated: 2016/10/4
- Phantom: Triple Flat Phantom 5.1C; Type: QD 000 P51 CA; Serial: 1130
- Measurement SW: DASY52, Version 52.8 (8);

**Area Scan (81x51x1):** Interpolated grid:  $dx=1.500 \text{ mm}$ ,  $dy=1.500 \text{ mm}$   
 Maximum value of SAR (interpolated) = 1.00 W/kg

**Zoom Scan (5x5x7)/Cube 0:** Measurement grid:  $dx=8\text{mm}$ ,  $dy=8\text{mm}$ ,  $dz=5\text{mm}$   
 Reference Value = 18.50 V/m; Power Drift = 0.16 dB  
 Peak SAR (extrapolated) = 1.34 W/kg  
**SAR(1 g) = 0.686 W/kg; SAR(10 g) = 0.359 W/kg**  
 Maximum value of SAR (measured) = 1.02 W/kg



0 dB = 1.02 W/kg = 0.09 dBW/kg

**Test Plot 7#: PCS 1900 \_ Horizontal-Down\_Mid**

**DUT: 4G LTE USB Dongle; Type: Onyx4G; Serial: 17040500520**

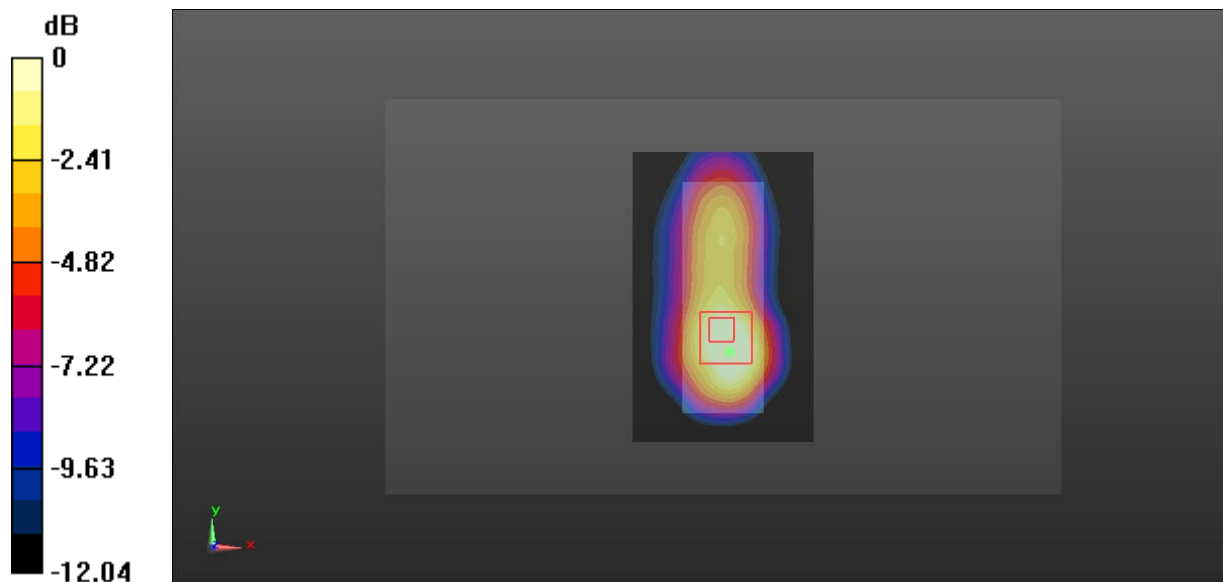
Communication System: Generic GPRS-1 slots; Frequency: 1880 MHz; Duty Cycle: 1:8  
 Medium parameters used:  $f = 1880 \text{ MHz}$ ;  $\sigma = 1.549 \text{ S/m}$ ;  $\epsilon_r = 52.417$ ;  $\rho = 1000 \text{ kg/m}^3$   
 Phantom section: Left Section

DASY5 Configuration:

- Probe: EX3DV4 - SN7441; ConvF(7.95, 7.95, 7.95); Calibrated: 2016/11/15;
- Sensor-Surface: 1.4mm (Mechanical Surface Detection)
- Electronics: DAE3 Sn379; Calibrated: 2016/10/4
- Phantom: Triple Flat Phantom 5.1C; Type: QD 000 P51 CA; Serial: 1130
- Measurement SW: DASY52, Version 52.8 (8);

**Area Scan (81x51x1):** Interpolated grid:  $dx=1.500 \text{ mm}$ ,  $dy=1.500 \text{ mm}$   
 Maximum value of SAR (interpolated) = 1.47 W/kg

**Zoom Scan (5x5x7)/Cube 0:** Measurement grid:  $dx=8\text{mm}$ ,  $dy=8\text{mm}$ ,  $dz=5\text{mm}$   
 Reference Value = 21.03 V/m; Power Drift = -0.03 dB  
 Peak SAR (extrapolated) = 1.78 W/kg  
**SAR(1 g) = 0.845 W/kg; SAR(10 g) = 0.394 W/kg**  
 Maximum value of SAR (measured) = 1.36 W/kg



0 dB = 1.36 W/kg = 1.34 dBW/kg

**Test Plot 8#: PCS 1900 \_ Horizontal-Down\_High**

**DUT: 4G LTE USB Dongle; Type: Onyx4G; Serial: 17040500520**

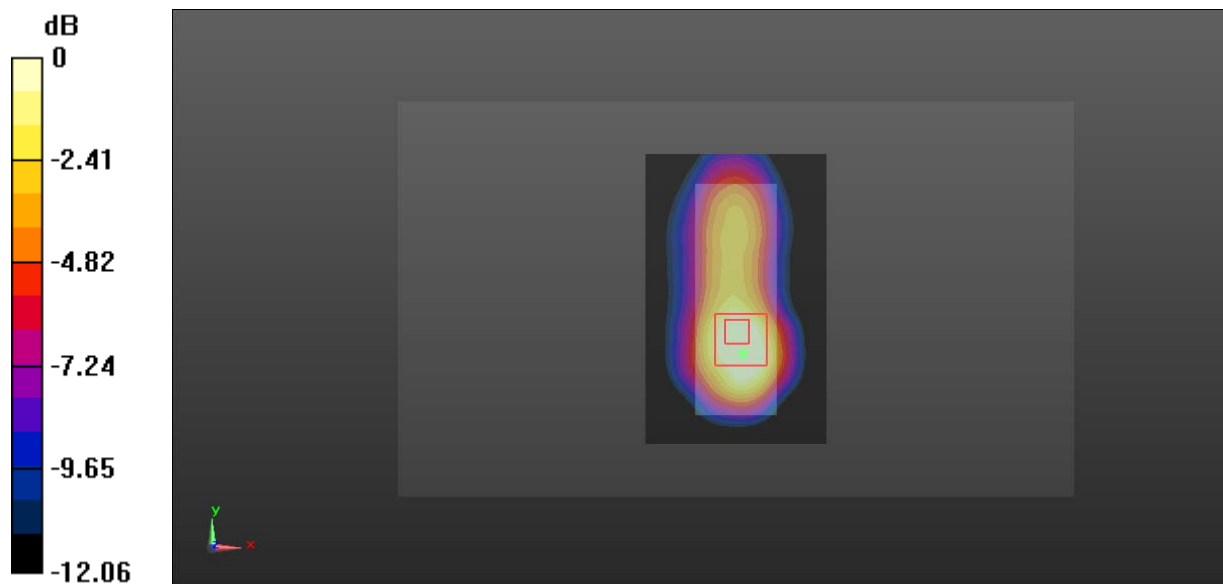
Communication System: Generic GPRS-1 slots; Frequency: 1909.8 MHz; Duty Cycle: 1:8  
 Medium parameters used:  $f = 1909.8 \text{ MHz}$ ;  $\sigma = 1.572 \text{ S/m}$ ;  $\epsilon_r = 51.896$ ;  $\rho = 1000 \text{ kg/m}^3$   
 Phantom section: Left Section

DASY5 Configuration:

- Probe: EX3DV4 - SN7441; ConvF(7.95, 7.95, 7.95); Calibrated: 2016/11/15;
- Sensor-Surface: 1.4mm (Mechanical Surface Detection)
- Electronics: DAE3 Sn379; Calibrated: 2016/10/4
- Phantom: Triple Flat Phantom 5.1C; Type: QD 000 P51 CA; Serial: 1130
- Measurement SW: DASY52, Version 52.8 (8);

**Area Scan (81x51x1):** Interpolated grid:  $dx=1.500 \text{ mm}$ ,  $dy=1.500 \text{ mm}$   
 Maximum value of SAR (interpolated) = 2.00 W/kg

**Zoom Scan (5x5x7)/Cube 0:** Measurement grid:  $dx=8\text{mm}$ ,  $dy=8\text{mm}$ ,  $dz=5\text{mm}$   
 Reference Value = 23.79 V/m; Power Drift = -0.18 dB  
 Peak SAR (extrapolated) = 2.39 W/kg  
**SAR(1 g) = 1.04 W/kg; SAR(10 g) = 0.516 W/kg**  
 Maximum value of SAR (measured) = 1.72 W/kg



0 dB = 1.72 W/kg = 2.36 dBW/kg



**Test Plot 9#: PCS 1900\_ Vertical-Back \_Mid**

**DUT: 4G LTE USB Dongle; Type: Onyx4G; Serial: 17040500520**

Communication System: Generic GPRS-1 slots; Frequency: 1880 MHz; Duty Cycle: 1:8

Medium parameters used:  $f = 1880$  MHz;  $\sigma = 1.549$  S/m;  $\epsilon_r = 52.417$ ;  $\rho = 1000$  kg/m<sup>3</sup>

Phantom section: Left Section

DASY5 Configuration:

- Probe: EX3DV4 - SN7441; ConvF(7.95, 7.95, 7.95); Calibrated: 2016/11/15;
- Sensor-Surface: 1.4mm (Mechanical Surface Detection)
- Electronics: DAE3 Sn379; Calibrated: 2016/10/4
- Phantom: Triple Flat Phantom 5.1C; Type: QD 000 P51 CA; Serial: 1130
- Measurement SW: DASY52, Version 52.8 (8);

**Area Scan (81x31x1):** Interpolated grid: dx=1.500 mm, dy=1.500 mm

Maximum value of SAR (interpolated) = 0.356 W/kg

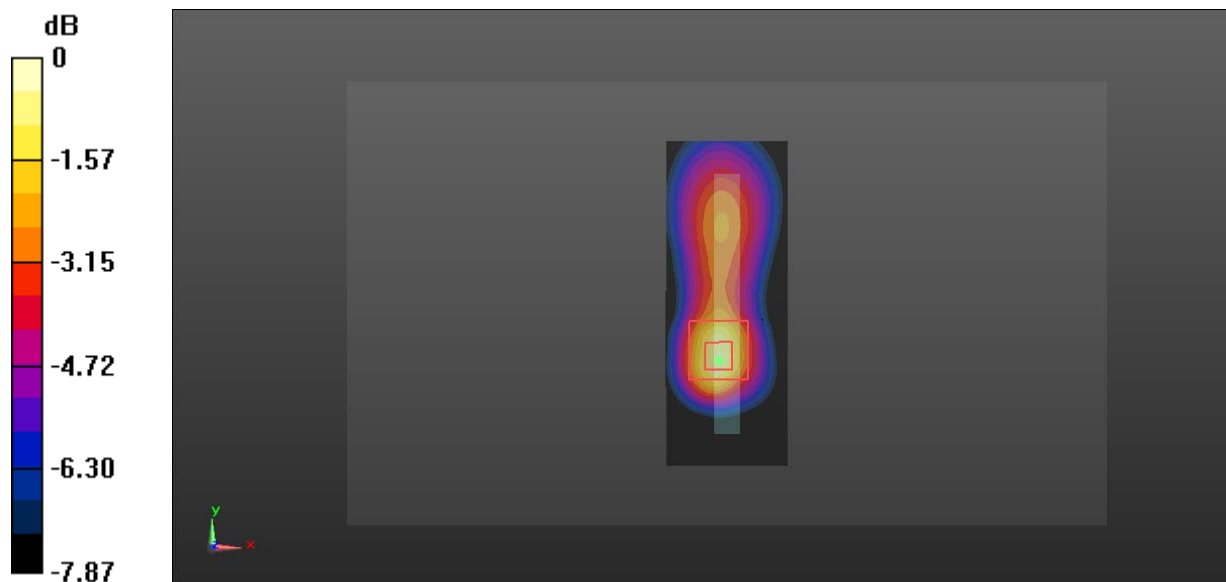
**Zoom Scan (5x5x7)/Cube 0:** Measurement grid: dx=8mm, dy=8mm, dz=5mm

Reference Value = 13.05 V/m; Power Drift = 0.09 dB

Peak SAR (extrapolated) = 0.406 W/kg

**SAR(1 g) = 0.276 W/kg; SAR(10 g) = 0.168 W/kg**

Maximum value of SAR (measured) = 0.373 W/kg



0 dB = 0.373 W/kg = -4.28 dBW/kg

**Test Plot 10#: LTE Band 7\_Vertical-Front\_Middle\_1RB**

**DUT: 4G LTE USB Dongle; Type: Onyx4G; Serial: 17040500520**

Communication System: Generic FDD-LTE; Frequency: 2535 MHz; Duty Cycle: 1:1  
 Medium parameters used:  $f = 2535 \text{ MHz}$ ;  $\sigma = 2.156 \text{ S/m}$ ;  $\epsilon_r = 50.539$ ;  $\rho = 1000 \text{ kg/m}^3$  ;  
 Phantom section: Center Section

DASY5 Configuration:

- Probe: EX3DV4 - SN7441; ConvF(7.39, 7.39, 7.39); Calibrated: 2016/11/15;
- Sensor-Surface: 1.4mm (Mechanical Surface Detection)
- Electronics: DAE3 Sn379; Calibrated: 2016/10/4
- Phantom: Triple Flat Phantom 5.1C; Type: QD 000 P51 CA; Serial: 1130
- Measurement SW: DASY52, Version 52.8 (8);

**Area Scan (101x31x1):** Interpolated grid:  $dx=1.200 \text{ mm}$ ,  $dy=1.200 \text{ mm}$

Maximum value of SAR (interpolated) = 0.924 W/kg

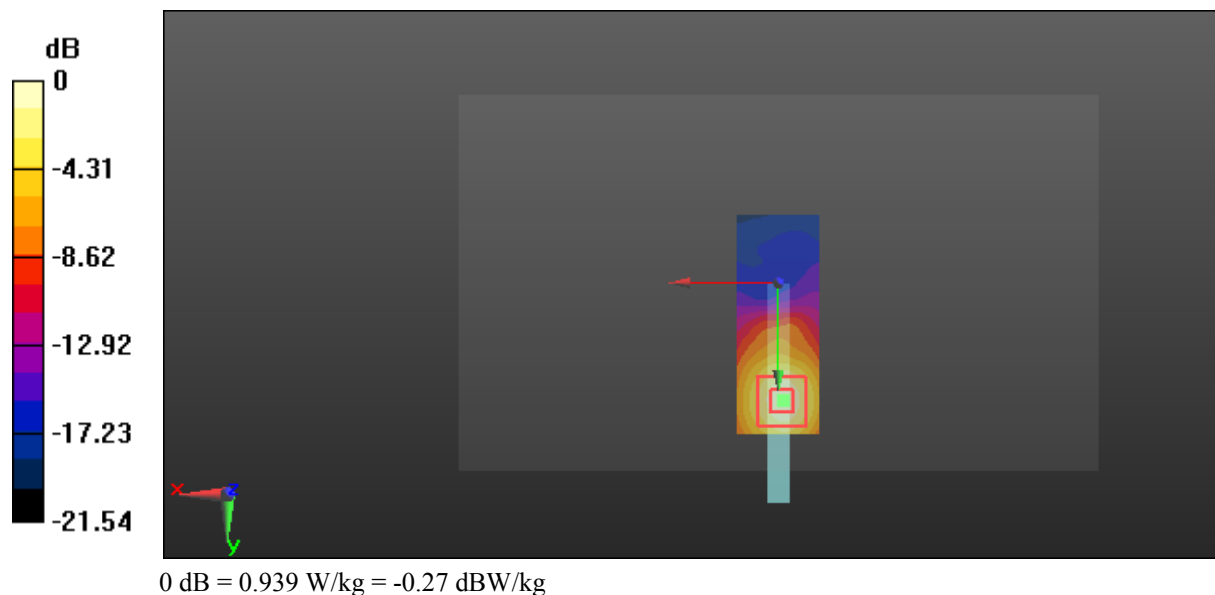
**Zoom Scan (5x5x7)/Cube 0:** Measurement grid:  $dx=8\text{mm}$ ,  $dy=8\text{mm}$ ,  $dz=5\text{mm}$

Reference Value = 2.383 V/m; Power Drift = -0.14 dB

Peak SAR (extrapolated) = 1.23 W/kg

**SAR(1 g) = 0.540 W/kg; SAR(10 g) = 0.243 W/kg**

Maximum value of SAR (measured) = 0.939 W/kg



**Test Plot 11#: LTE Band 7\_Vertical-Front\_Middle\_50%RB**

**DUT: 4G LTE USB Dongle; Type: Onyx4G; Serial: 17040500520**

Communication System: Generic FDD-LTE; Frequency: 2535 MHz; Duty Cycle: 1:1  
 Medium parameters used:  $f = 2535 \text{ MHz}$ ;  $\sigma = 2.156 \text{ S/m}$ ;  $\epsilon_r = 50.539$ ;  $\rho = 1000 \text{ kg/m}^3$  ;  
 Phantom section: Center Section

DASY5 Configuration:

- Probe: EX3DV4 - SN7441; ConvF(7.39, 7.39, 7.39); Calibrated: 2016/11/15;
- Sensor-Surface: 1.4mm (Mechanical Surface Detection)
- Electronics: DAE3 Sn379; Calibrated: 2016/10/4
- Phantom: Triple Flat Phantom 5.1C; Type: QD 000 P51 CA; Serial: 1130
- Measurement SW: DASY52, Version 52.8 (8);

**Area Scan (101x31x1):** Interpolated grid:  $dx=1.200 \text{ mm}$ ,  $dy=1.200 \text{ mm}$

Maximum value of SAR (interpolated) = 0.647 W/kg

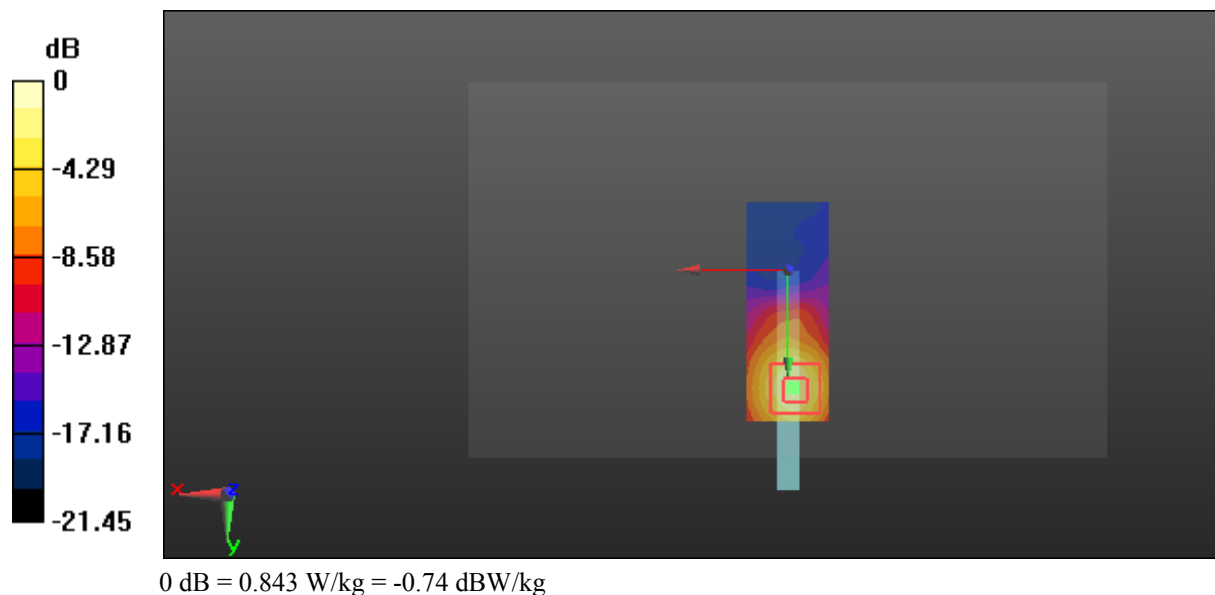
**Zoom Scan (5x5x7)/Cube 0:** Measurement grid:  $dx=8\text{mm}$ ,  $dy=8\text{mm}$ ,  $dz=5\text{mm}$

Reference Value = 2.254 V/m; Power Drift = -0.09 dB

Peak SAR (extrapolated) = 1.11 W/kg

**SAR(1 g) = 0.473 W/kg; SAR(10 g) = 0.207 W/kg**

Maximum value of SAR (measured) = 0.843 W/kg



**Test Plot 12#: LTE Band 7\_Horizontal-Up\_Low\_1RB****DUT: 4G LTE USB Dongle; Type: Onyx4G; Serial: 17040500520**

Communication System: Generic FDD-LTE; Frequency: 2510 MHz; Duty Cycle: 1:1  
Medium parameters used:  $f = 2510$  MHz;  $\sigma = 2.016$  S/m;  $\epsilon_r = 53.318$ ;  $\rho = 1000$  kg/m<sup>3</sup> ;  
Phantom section: Center Section

DASY5 Configuration:

- Probe: EX3DV4 - SN7441; ConvF(7.39, 7.39, 7.39); Calibrated: 2016/11/15;
- Sensor-Surface: 1.4mm (Mechanical Surface Detection)
- Electronics: DAE3 Sn379; Calibrated: 2016/10/4
- Phantom: Triple Flat Phantom 5.1C; Type: QD 000 P51 CA; Serial: 1130
- Measurement SW: DASY52, Version 52.8 (8);

**Area Scan (101x61x1):** Interpolated grid: dx=1.200 mm, dy=1.200 mm

Maximum value of SAR (interpolated) = 1.43 W/kg

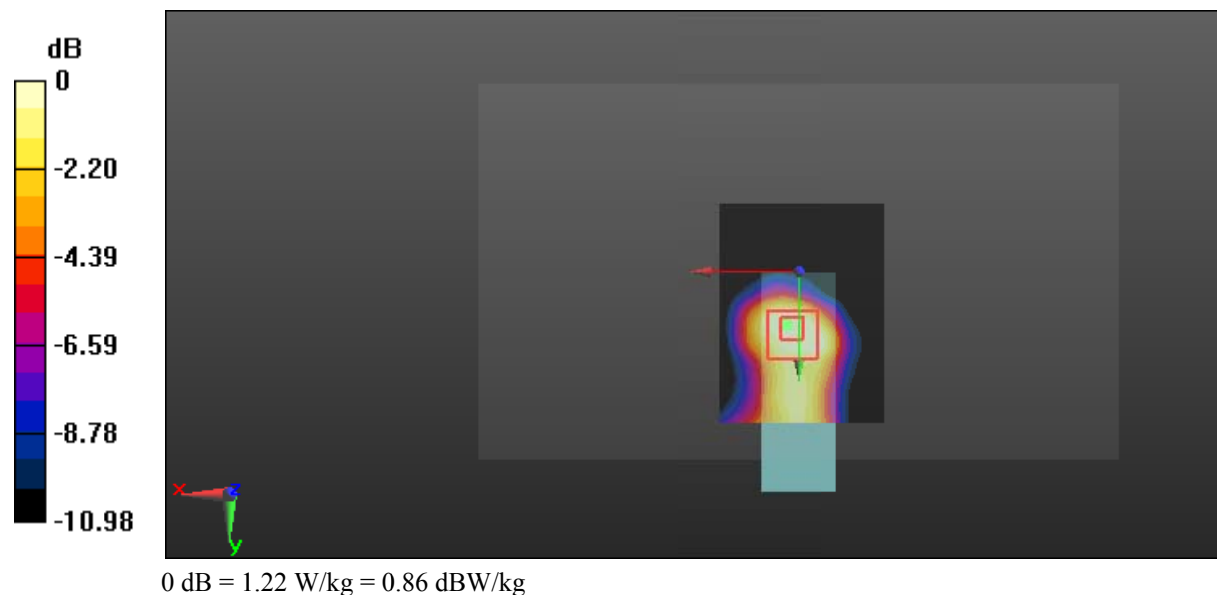
**Zoom Scan (5x5x7)/Cube 0:** Measurement grid: dx=8mm, dy=8mm, dz=5mm

Reference Value = 6.316 V/m; Power Drift = 0.07 dB

Peak SAR (extrapolated) = 1.68 W/kg

**SAR(1 g) = 0.781 W/kg; SAR(10 g) = 0.404 W/kg**

Maximum value of SAR (measured) = 1.22 W/kg



**Test Plot 13#: LTE Band 7\_Horizontal-Up\_Middle\_1RB**

**DUT: 4G LTE USB Dongle; Type: Onyx4G; Serial: 17040500520**

Communication System: Generic FDD-LTE; Frequency: 2535 MHz; Duty Cycle: 1:1  
 Medium parameters used:  $f = 2535 \text{ MHz}$ ;  $\sigma = 2.156 \text{ S/m}$ ;  $\epsilon_r = 50.539$ ;  $\rho = 1000 \text{ kg/m}^3$  ;  
 Phantom section: Center Section

DASY5 Configuration:

- Probe: EX3DV4 - SN7441; ConvF(7.39, 7.39, 7.39); Calibrated: 2016/11/15;
- Sensor-Surface: 1.4mm (Mechanical Surface Detection)
- Electronics: DAE3 Sn379; Calibrated: 2016/10/4
- Phantom: Triple Flat Phantom 5.1C; Type: QD 000 P51 CA; Serial: 1130
- Measurement SW: DASY52, Version 52.8 (8);

**Area Scan (101x61x1):** Interpolated grid:  $dx=1.200 \text{ mm}$ ,  $dy=1.200 \text{ mm}$

Maximum value of SAR (interpolated) = 1.44 W/kg

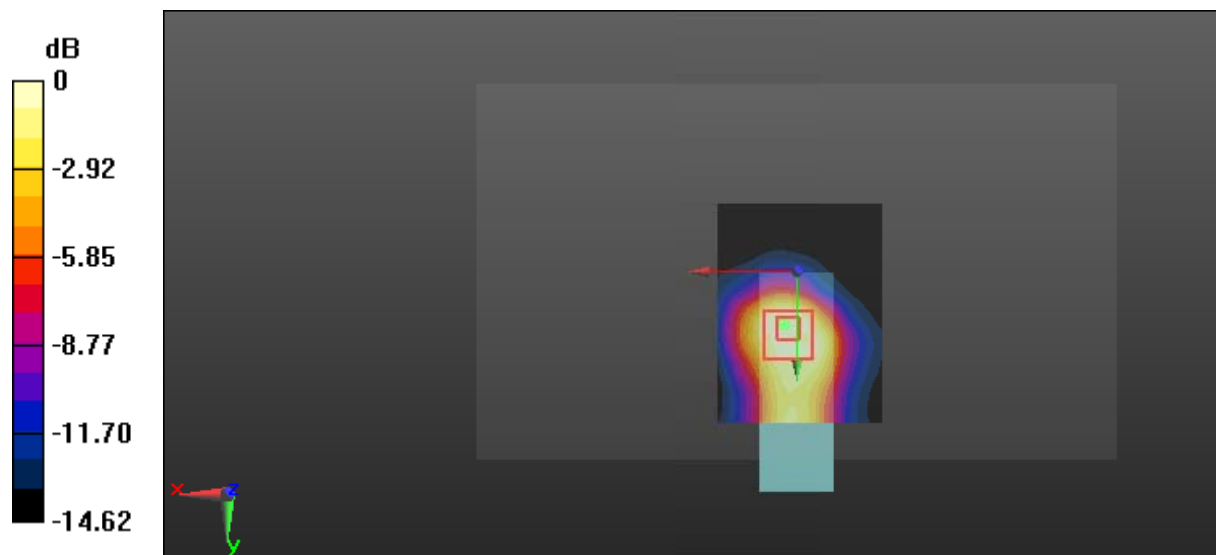
**Zoom Scan (5x5x7)/Cube 0:** Measurement grid:  $dx=8\text{mm}$ ,  $dy=8\text{mm}$ ,  $dz=5\text{mm}$

Reference Value = 5.804 V/m; Power Drift = 0.09 dB

Peak SAR (extrapolated) = 1.64 W/kg

**SAR(1 g) = 0.764 W/kg; SAR(10 g) = 0.388 W/kg**

Maximum value of SAR (measured) = 1.22 W/kg



0 dB = 1.22 W/kg = 0.86 dBW/kg

**Test Plot 14#: LTE Band 7\_Horizontal-Up\_High\_1RB**

**DUT: 4G LTE USB Dongle; Type: Onyx4G; Serial: 17040500520**

Communication System: Generic FDD-LTE; Frequency: 2560 MHz; Duty Cycle: 1:1  
 Medium parameters used:  $f = 2560$  MHz;  $\sigma = 2.19$  S/m;  $\epsilon_r = 51.704$ ;  $\rho = 1000$  kg/m<sup>3</sup> ;  
 Phantom section: Center Section

DASY5 Configuration:

- Probe: EX3DV4 - SN7441; ConvF(7.39, 7.39, 7.39); Calibrated: 2016/11/15;
- Sensor-Surface: 1.4mm (Mechanical Surface Detection)
- Electronics: DAE3 Sn379; Calibrated: 2016/10/4
- Phantom: Triple Flat Phantom 5.1C; Type: QD 000 P51 CA; Serial: 1130
- Measurement SW: DASY52, Version 52.8 (8);

**Area Scan (101x61x1):** Interpolated grid: dx=1.200 mm, dy=1.200 mm

Maximum value of SAR (interpolated) = 1.15 W/kg

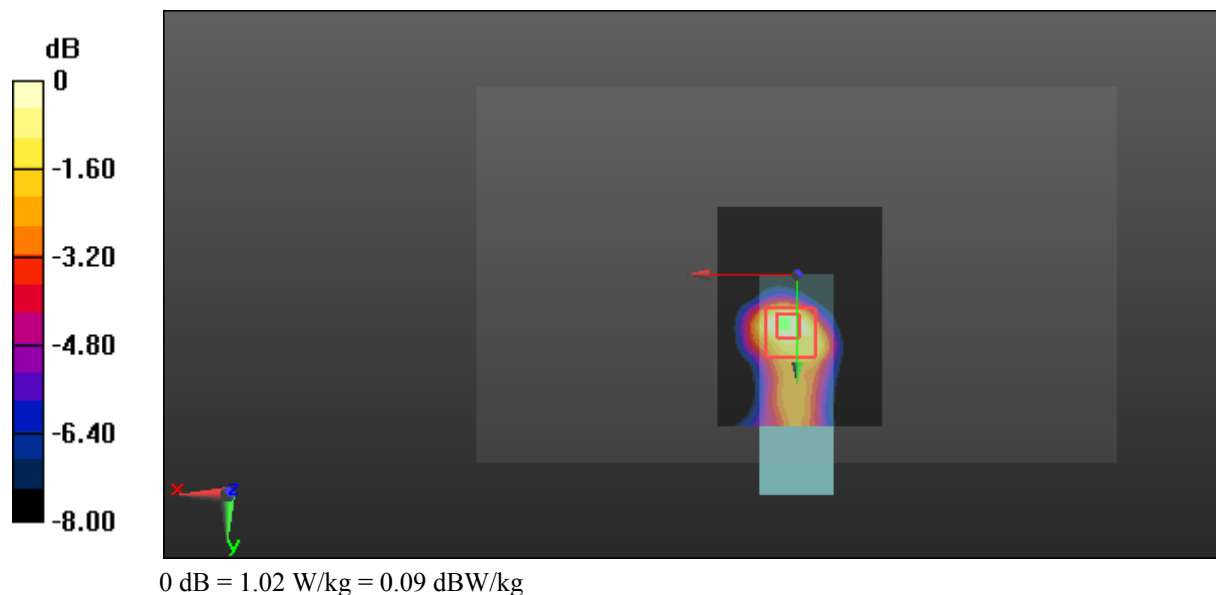
**Zoom Scan (5x5x7)/Cube 0:** Measurement grid: dx=8mm, dy=8mm, dz=5mm

Reference Value = 6.089 V/m; Power Drift = -0.12 dB

Peak SAR (extrapolated) = 1.39 W/kg

**SAR(1 g) = 0.609 W/kg; SAR(10 g) = 0.305 W/kg**

Maximum value of SAR (measured) = 1.02 W/kg



**Test Plot 15#: LTE Band 7\_Horizontal-Up\_Low\_50%RB**

**DUT: 4G LTE USB Dongle; Type: Onyx4G; Serial: 17040500520**

Communication System: Generic FDD-LTE; Frequency: 2510 MHz; Duty Cycle: 1:1  
 Medium parameters used:  $f = 2510$  MHz;  $\sigma = 2.016$  S/m;  $\epsilon_r = 53.318$ ;  $\rho = 1000$  kg/m<sup>3</sup> ;  
 Phantom section: Center Section

DASY5 Configuration:

- Probe: EX3DV4 - SN7441; ConvF(7.39, 7.39, 7.39); Calibrated: 2016/11/15;
- Sensor-Surface: 1.4mm (Mechanical Surface Detection)
- Electronics: DAE3 Sn379; Calibrated: 2016/10/4
- Phantom: Triple Flat Phantom 5.1C; Type: QD 000 P51 CA; Serial: 1130
- Measurement SW: DASY52, Version 52.8 (8);

**Area Scan (101x61x1):** Interpolated grid: dx=1.200 mm, dy=1.200 mm

Maximum value of SAR (interpolated) = 1.11 W/kg

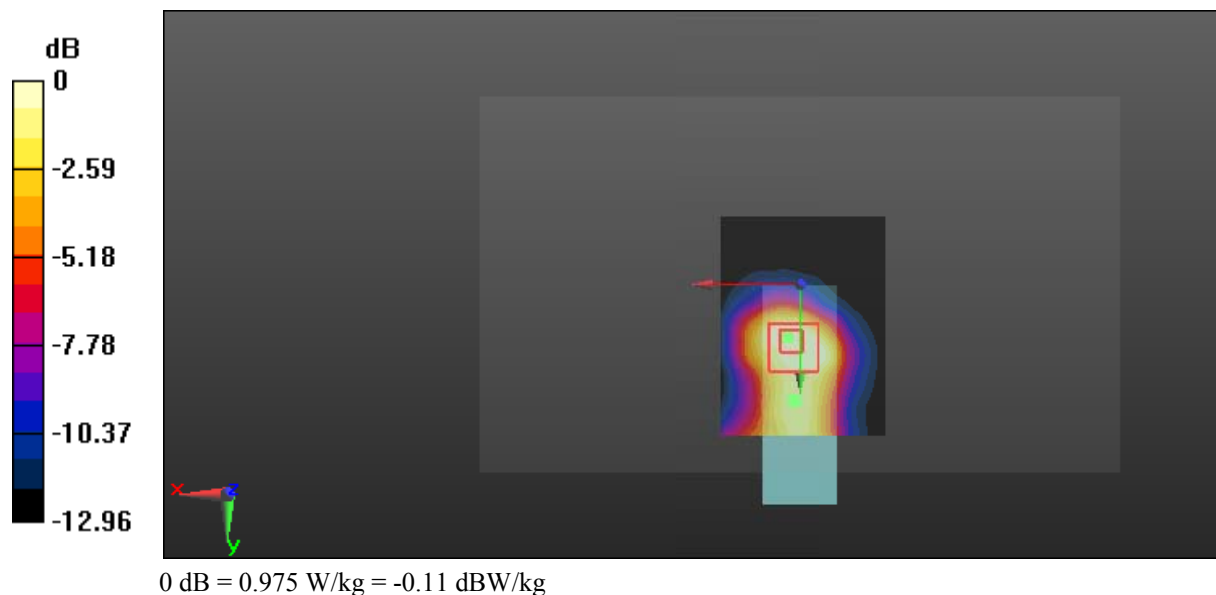
**Zoom Scan (5x5x7)/Cube 0:** Measurement grid: dx=8mm, dy=8mm, dz=5mm

Reference Value = 5.982 V/m; Power Drift = -0.18 dB

Peak SAR (extrapolated) = 1.33 W/kg

**SAR(1 g) = 0.613 W/kg; SAR(10 g) = 0.322 W/kg**

Maximum value of SAR (measured) = 0.975 W/kg



**Test Plot 16#: LTE Band 7\_Body Top\_Middle\_1RB**

**DUT: 4G LTE USB Dongle; Type: Onyx4G; Serial: 17040500520**

Communication System: Generic FDD-LTE; Frequency: 2535 MHz; Duty Cycle: 1:1  
 Medium parameters used:  $f = 2535 \text{ MHz}$ ;  $\sigma = 2.156 \text{ S/m}$ ;  $\epsilon_r = 50.539$ ;  $\rho = 1000 \text{ kg/m}^3$  ;  
 Phantom section: Center Section

DASY5 Configuration:

- Probe: EX3DV4 - SN7441; ConvF(7.39, 7.39, 7.39); Calibrated: 2016/11/15;
- Sensor-Surface: 1.4mm (Mechanical Surface Detection)
- Electronics: DAE3 Sn379; Calibrated: 2016/10/4
- Phantom: Triple Flat Phantom 5.1C; Type: QD 000 P51 CA; Serial: 1130
- Measurement SW: DASY52, Version 52.8 (8);

**Area Scan (71x31x1):** Interpolated grid:  $dx=1.200 \text{ mm}$ ,  $dy=1.200 \text{ mm}$

Maximum value of SAR (interpolated) = 0.890 W/kg

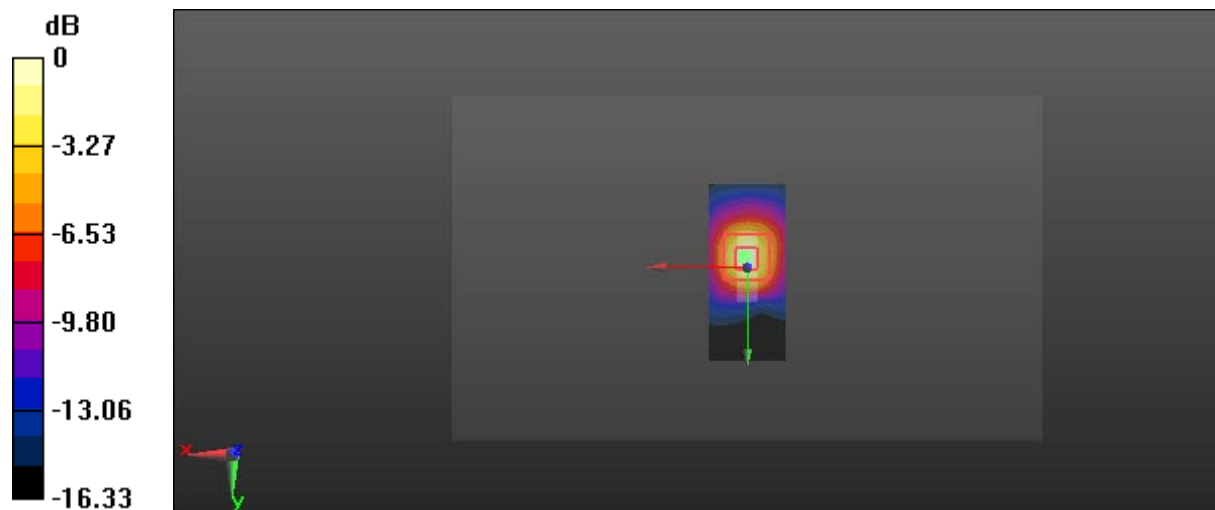
**Zoom Scan (5x5x7)/Cube 0:** Measurement grid:  $dx=8\text{mm}$ ,  $dy=8\text{mm}$ ,  $dz=5\text{mm}$

Reference Value = 15.66 V/m; Power Drift = -0.10 dB

Peak SAR (extrapolated) = 1.26 W/kg

**SAR(1 g) = 0.481 W/kg; SAR(10 g) = 0.200 W/kg**

Maximum value of SAR (measured) = 0.928 W/kg



0 dB = 0.928 W/kg = -0.32 dBW/kg



**Test Plot 17#: LTE Band 7\_Body Top\_Middle\_50%RB**

**DUT: 4G LTE USB Dongle; Type: Onyx4G; Serial: 17040500520**

Communication System: Generic FDD-LTE; Frequency: 2535 MHz; Duty Cycle: 1:1  
 Medium parameters used:  $f = 2535$  MHz;  $\sigma = 2.156$  S/m;  $\epsilon_r = 50.539$ ;  $\rho = 1000$  kg/m<sup>3</sup> ;  
 Phantom section: Center Section

DASY5 Configuration:

- Probe: EX3DV4 - SN7441; ConvF(7.39, 7.39, 7.39); Calibrated: 2016/11/15;
- Sensor-Surface: 1.4mm (Mechanical Surface Detection)
- Electronics: DAE3 Sn379; Calibrated: 2016/10/4
- Phantom: Triple Flat Phantom 5.1C; Type: QD 000 P51 CA; Serial: 1130
- Measurement SW: DASY52, Version 52.8 (8);

**Area Scan (71x31x1):** Interpolated grid: dx=1.200 mm, dy=1.200 mm

Maximum value of SAR (interpolated) = 0.671 W/kg

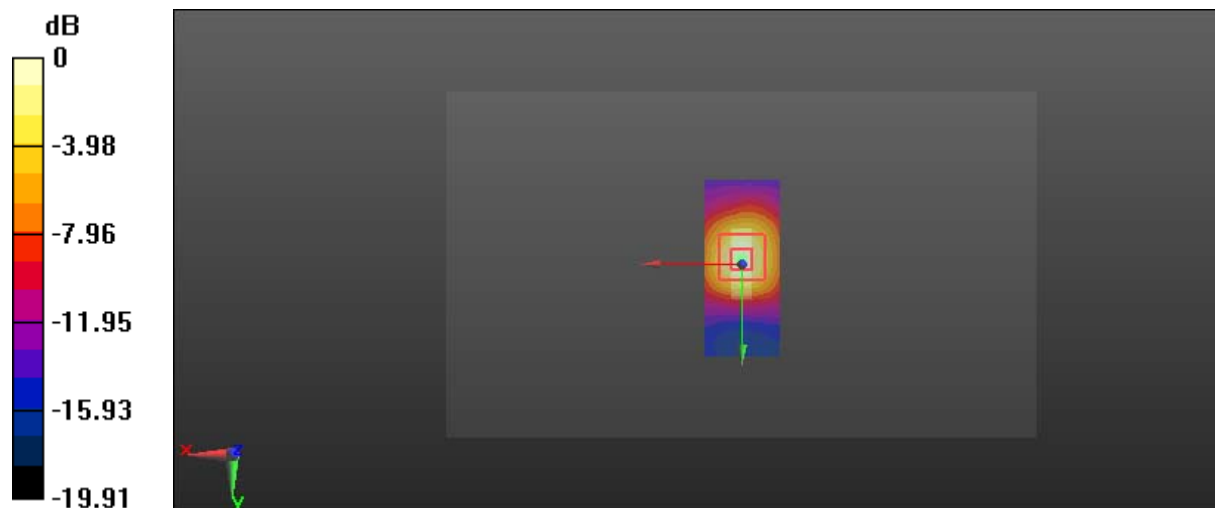
**Zoom Scan (5x5x7)/Cube 0:** Measurement grid: dx=8mm, dy=8mm, dz=5mm

Reference Value = 13.27 V/m; Power Drift = -0.05 dB

Peak SAR (extrapolated) = 0.797 W/kg

**SAR(1 g) = 0.330 W/kg; SAR(10 g) = 0.144 W/kg**

Maximum value of SAR (measured) = 0.601 W/kg



0 dB = 0.601 W/kg = -2.21 dBW/kg

**Test Plot 18#: LTE Band 7\_Horizontal-Down\_Middle\_1RB**

**DUT: 4G LTE USB Dongle; Type: Onyx4G; Serial: 17040500520**

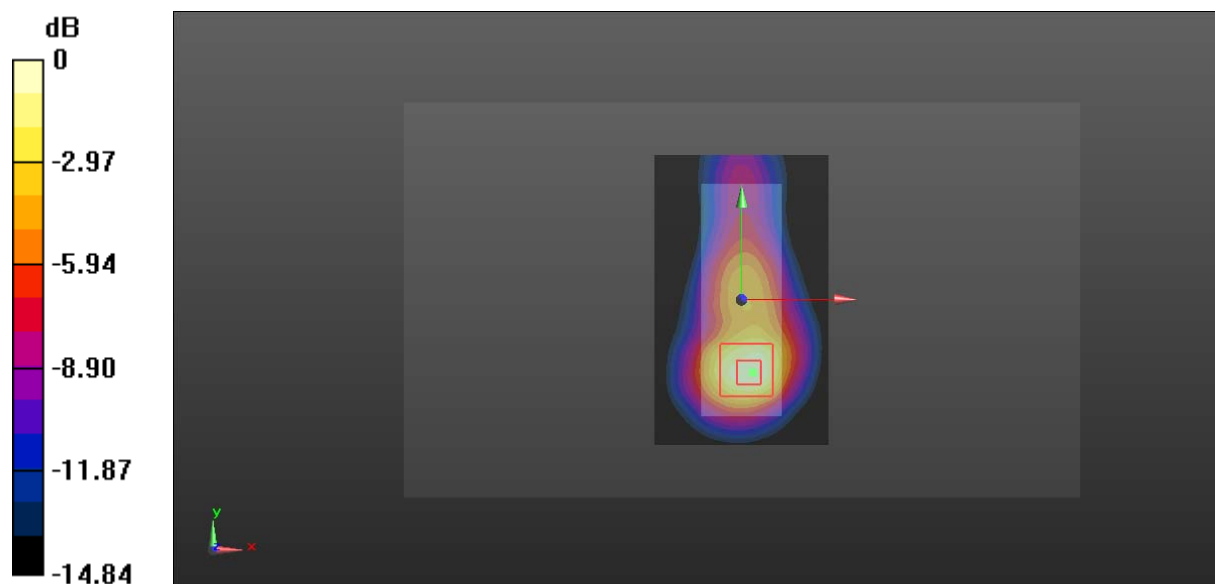
Communication System: Generic FDD-LTE; Frequency: 2535 MHz; Duty Cycle: 1:1  
 Medium parameters used:  $f = 2535 \text{ MHz}$ ;  $\sigma = 2.027 \text{ S/m}$ ;  $\epsilon_r = 52.66$ ;  $\rho = 1000 \text{ kg/m}^3$   
 Phantom section: Center Section

DASY5 Configuration:

- Probe: EX3DV4 - SN7441; ConvF(7.39, 7.39, 7.39); Calibrated: 2016/11/15;
- Sensor-Surface: 1.4mm (Mechanical Surface Detection)
- Electronics: DAE3 Sn379; Calibrated: 2016/10/4
- Phantom: Triple Flat Phantom 5.1C; Type: QD 000 P51 CA; Serial: 1130
- Measurement SW: DASY52, Version 52.8 (8);

**Area Scan (101x61x1):** Interpolated grid:  $dx=1.200 \text{ mm}$ ,  $dy=1.200 \text{ mm}$   
 Maximum value of SAR (interpolated) = 1.05 W/kg

**Zoom Scan (5x5x7)/Cube 0:** Measurement grid:  $dx=8\text{mm}$ ,  $dy=8\text{mm}$ ,  $dz=5\text{mm}$   
 Reference Value = 5.96 V/m; Power Drift = 0.04 dB  
 Peak SAR (extrapolated) = 1.31 W/kg  
**SAR(1 g) = 0.577 W/kg; SAR(10 g) = 0.256 W/kg**  
 Maximum value of SAR (measured) = 1.07 W/kg



0 dB = 1.07 W/kg = 0.29 dBW/kg

**Test Plot 19#: LTE Band 7\_Horizontal-Down\_Middle\_50%RB**

**DUT: 4G LTE USB Dongle; Type: Onyx4G; Serial: 17040500520**

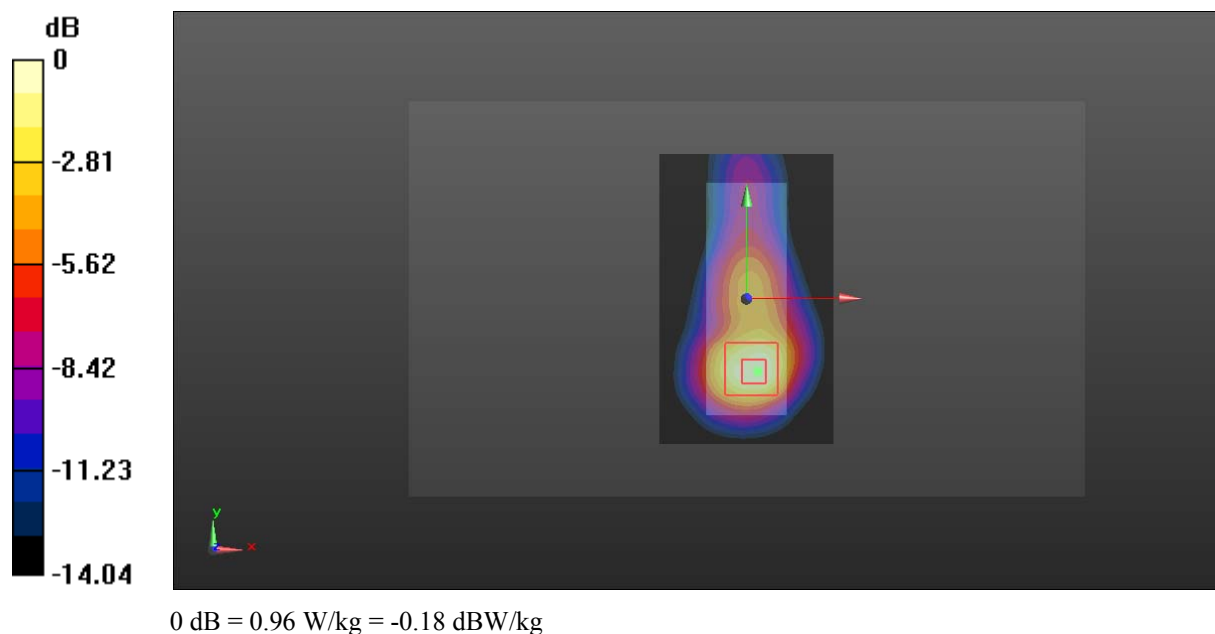
Communication System: Generic FDD-LTE; Frequency: 2535 MHz; Duty Cycle: 1:1  
 Medium parameters used:  $f = 2535 \text{ MHz}$ ;  $\sigma = 2.027 \text{ S/m}$ ;  $\epsilon_r = 52.66$ ;  $\rho = 1000 \text{ kg/m}^3$   
 Phantom section: Center Section

DASY5 Configuration:

- Probe: EX3DV4 - SN7441; ConvF(7.39, 7.39, 7.39); Calibrated: 2016/11/15;
- Sensor-Surface: 1.4mm (Mechanical Surface Detection)
- Electronics: DAE3 Sn379; Calibrated: 2016/10/4
- Phantom: Triple Flat Phantom 5.1C; Type: QD 000 P51 CA; Serial: 1130
- Measurement SW: DASY52, Version 52.8 (8);

**Area Scan (101x61x1):** Interpolated grid:  $dx=1.200 \text{ mm}$ ,  $dy=1.200 \text{ mm}$   
 Maximum value of SAR (interpolated) = 0.733 W/kg

**Zoom Scan (5x5x7)/Cube 0:** Measurement grid:  $dx=8\text{mm}$ ,  $dy=8\text{mm}$ ,  $dz=5\text{mm}$   
 Reference Value = 15.17 V/m; Power Drift = -0.07 dB  
 Peak SAR (extrapolated) = 0.89 W/kg  
**SAR(1 g) = 0.431 W/kg; SAR(10 g) = 0.260 W/kg**  
 Maximum value of SAR (measured) = 0.96 W/kg



**Test Plot 20#: LTE Band 7\_Vertical-Back\_Middle\_1RB****DUT: 4G LTE USB Dongle; Type: Onyx4G; Serial: 17040500520**

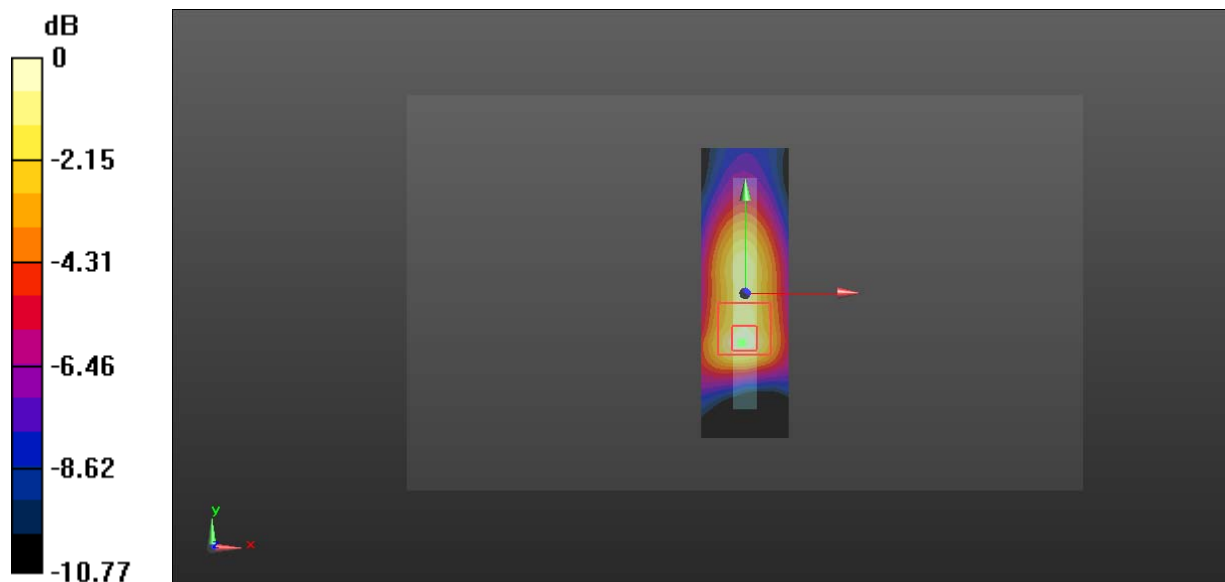
Communication System: Generic FDD-LTE; Frequency: 2535 MHz; Duty Cycle: 1:1  
Medium parameters used:  $f = 2535$  MHz;  $\sigma = 2.027$  S/m;  $\epsilon_r = 52.66$ ;  $\rho = 1000$  kg/m<sup>3</sup>  
Phantom section: Center Section

DASY5 Configuration:

- Probe: EX3DV4 - SN7441; ConvF(7.39, 7.39, 7.39); Calibrated: 2016/11/15;
- Sensor-Surface: 1.4mm (Mechanical Surface Detection)
- Electronics: DAE3 Sn379; Calibrated: 2016/10/4
- Phantom: Triple Flat Phantom 5.1C; Type: QD 000 P51 CA; Serial: 1130
- Measurement SW: DASY52, Version 52.8 (8);

**Area Scan (101x31x1):** Interpolated grid: dx=1.200 mm, dy=1.200 mm  
Maximum value of SAR (interpolated) = 0.98 W/kg

**Zoom Scan (5x5x7)/Cube 0:** Measurement grid: dx=8mm, dy=8mm, dz=5mm  
Reference Value = 5.18 V/m; Power Drift = -0.08 dB  
Peak SAR (extrapolated) = 1.24 W/kg  
**SAR(1 g) = 0.518 W/kg; SAR(10 g) = 0.224 W/kg**  
Maximum value of SAR (measured) = 0.866 W/kg



0 dB = 0.866 W/kg = -0.62 dBW/kg

**Test Plot 21#: LTE Band 7\_Vertical-Back\_Middle\_50%**

**DUT: 4G LTE USB Dongle; Type: Onyx4G; Serial: 17040500520**

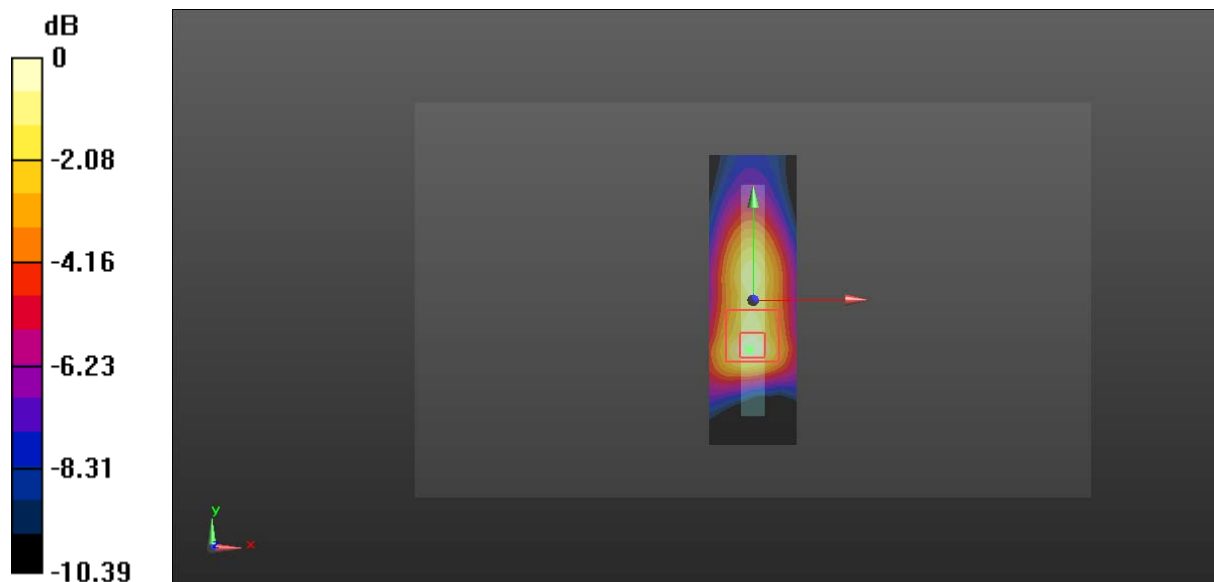
Communication System: Generic FDD-LTE; Frequency: 2535 MHz; Duty Cycle: 1:1  
 Medium parameters used:  $f = 2535 \text{ MHz}$ ;  $\sigma = 2.027 \text{ S/m}$ ;  $\epsilon_r = 52.66$ ;  $\rho = 1000 \text{ kg/m}^3$   
 Phantom section: Center Section

DASY5 Configuration:

- Probe: EX3DV4 - SN7441; ConvF(7.39, 7.39, 7.39); Calibrated: 2016/11/15;
- Sensor-Surface: 1.4mm (Mechanical Surface Detection)
- Electronics: DAE3 Sn379; Calibrated: 2016/10/4
- Phantom: Triple Flat Phantom 5.1C; Type: QD 000 P51 CA; Serial: 1130
- Measurement SW: DASY52, Version 52.8 (8);

**Area Scan (101x31x1):** Interpolated grid:  $dx=1.200 \text{ mm}$ ,  $dy=1.200 \text{ mm}$   
 Maximum value of SAR (interpolated) = 0.76 W/kg

**Zoom Scan (5x5x7)/Cube 0:** Measurement grid:  $dx=8\text{mm}$ ,  $dy=8\text{mm}$ ,  $dz=5\text{mm}$   
 Reference Value = 16.819 V/m; Power Drift = -0.01 dB  
 Peak SAR (extrapolated) = 0.92 W/kg  
**SAR(1 g) = 0.452 W/kg; SAR(10 g) = 0.280 W/kg**  
 Maximum value of SAR (measured) = 0.99 W/kg



0 dB = 0.99 W/kg = -0.04 dBW/kg