

External antenna sample acceptance letter

Shenzhen EDUP Electronics Technology Co.,LTD

Company address: 6 Floor #6 Building No. 48,Kangzheng Road Liantang Industrial Area Buji Town Shenzhen, GuangDong, China

Guest house	Wing connection		
Model	2.4G/5.8G Antenna		
Material code	A797-4DB Black Water Drop		
Versions	T:B		
Manufacture Date	2022.12.05		
Compilation	RF Audit	Structural audit	Authorizer
QING CHUANG HUI			
The customer confirms the seal:			

Description of basic project information:

Antenna type	external antenna
Antenna specification	Rod sleeve + copper pipe + RF cable

working frequency range	2.4G/5.8G WIFI
working frequency range (MHz)	2400-2500MHZ 5100-5800MHZ
Specification	5DB Black Water drop sleeve rod + dual frequency 2.4/5.8+ male head female hole +PCB

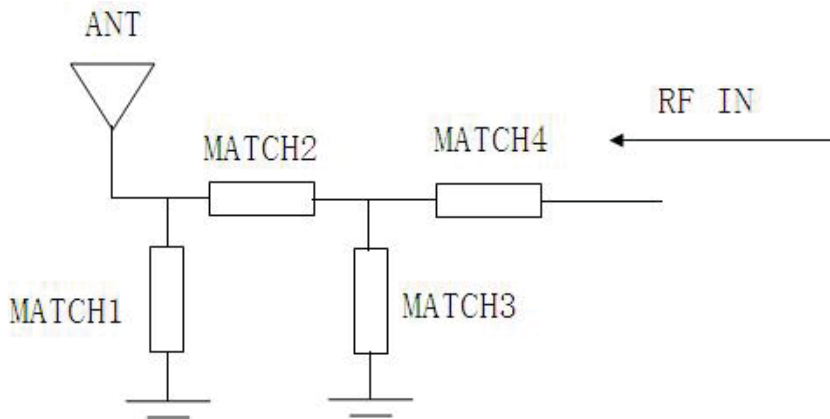
1、 Appearance and antenna sample:



2、 Environmental treatment is as follows:

No environment treatment

3、Antenna matching circuit



位号	MATCH1	MATCH2	MATCH3	MATCH4
值	NC	0Ω	NC	0Ω

4、Antenna testing equipment

4.1 Darkroom schematic diagram

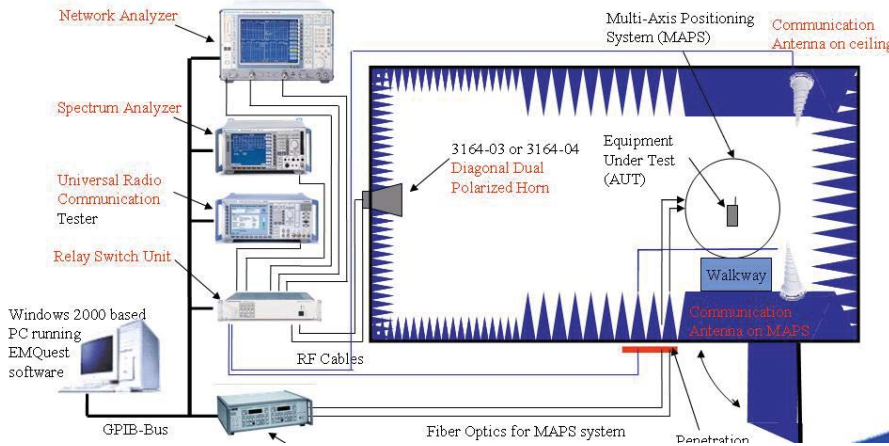


FIG. 1 Darkroom system assembly test wiring diagram

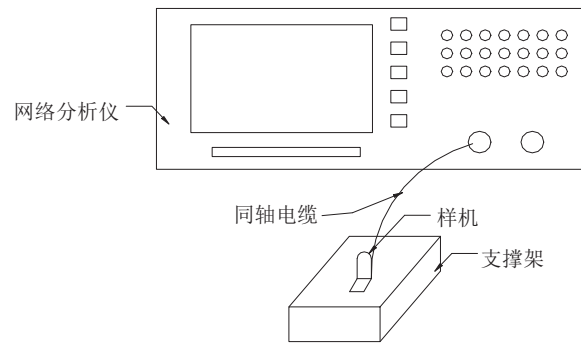


Figure 2 Antenna static test connection method

4.2 Dark room entity



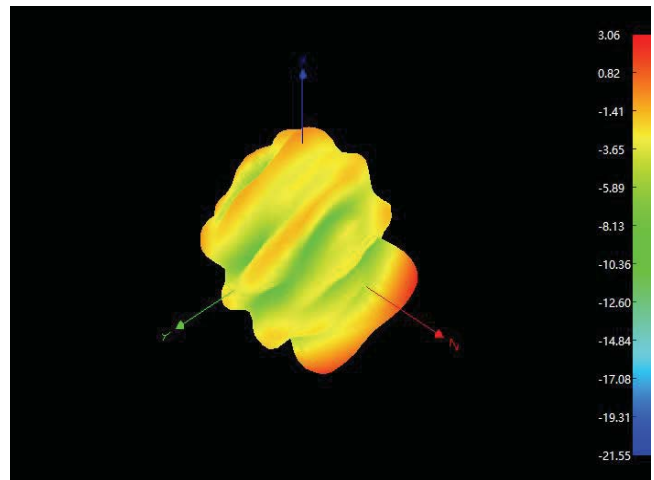
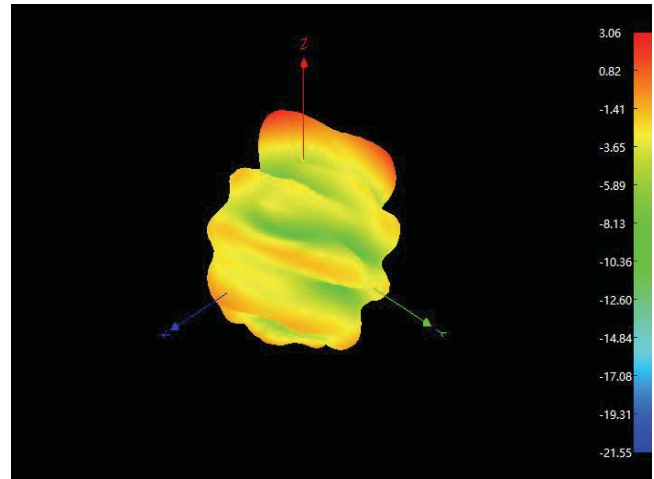
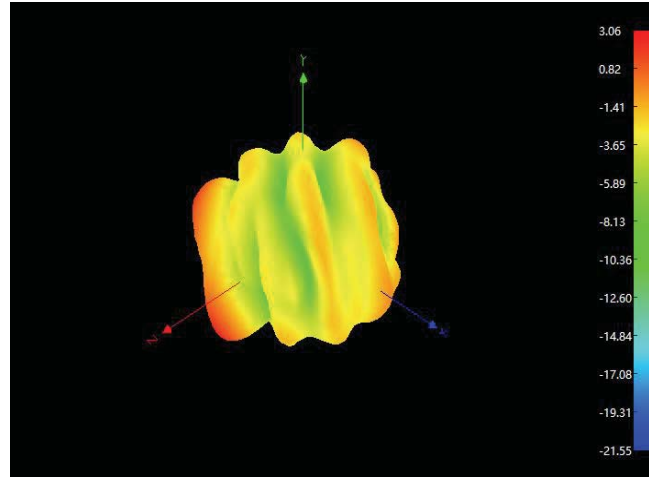
Darkroom interior

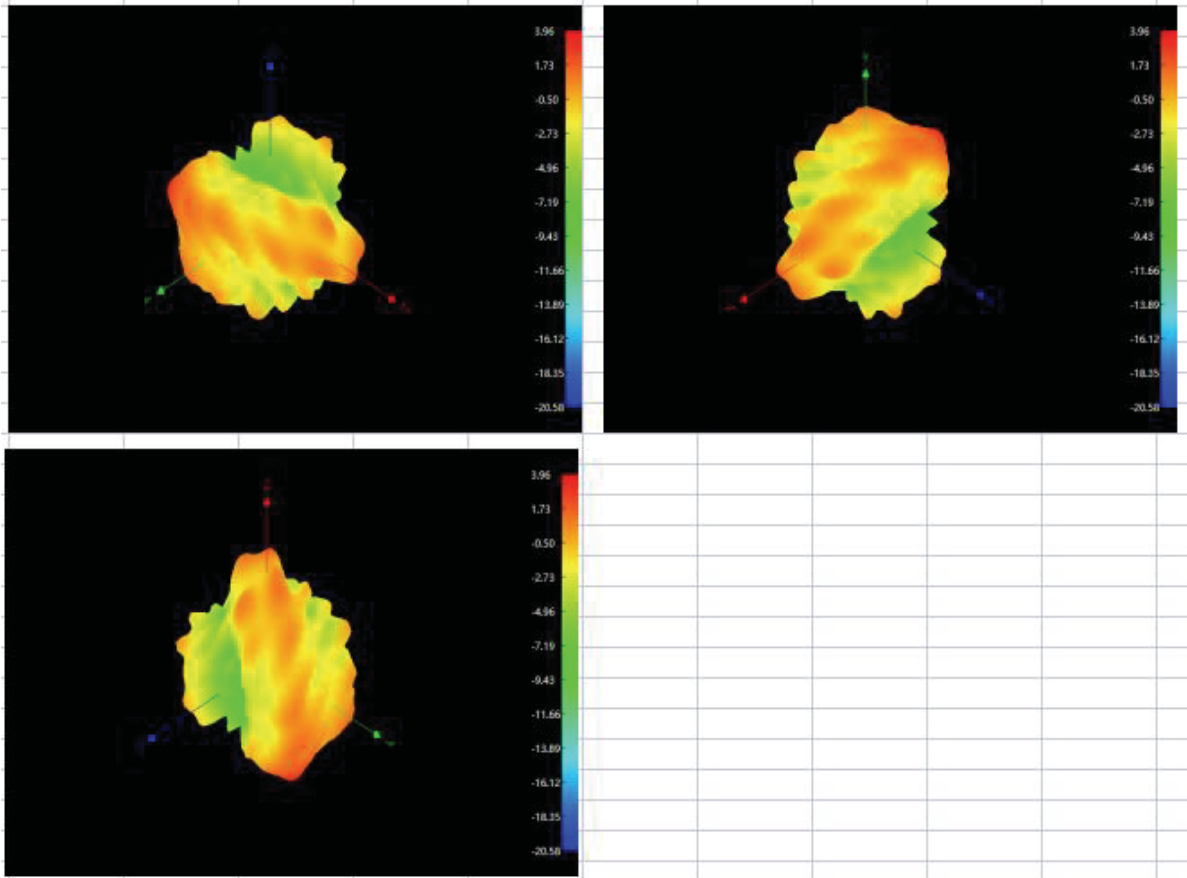


test instrument

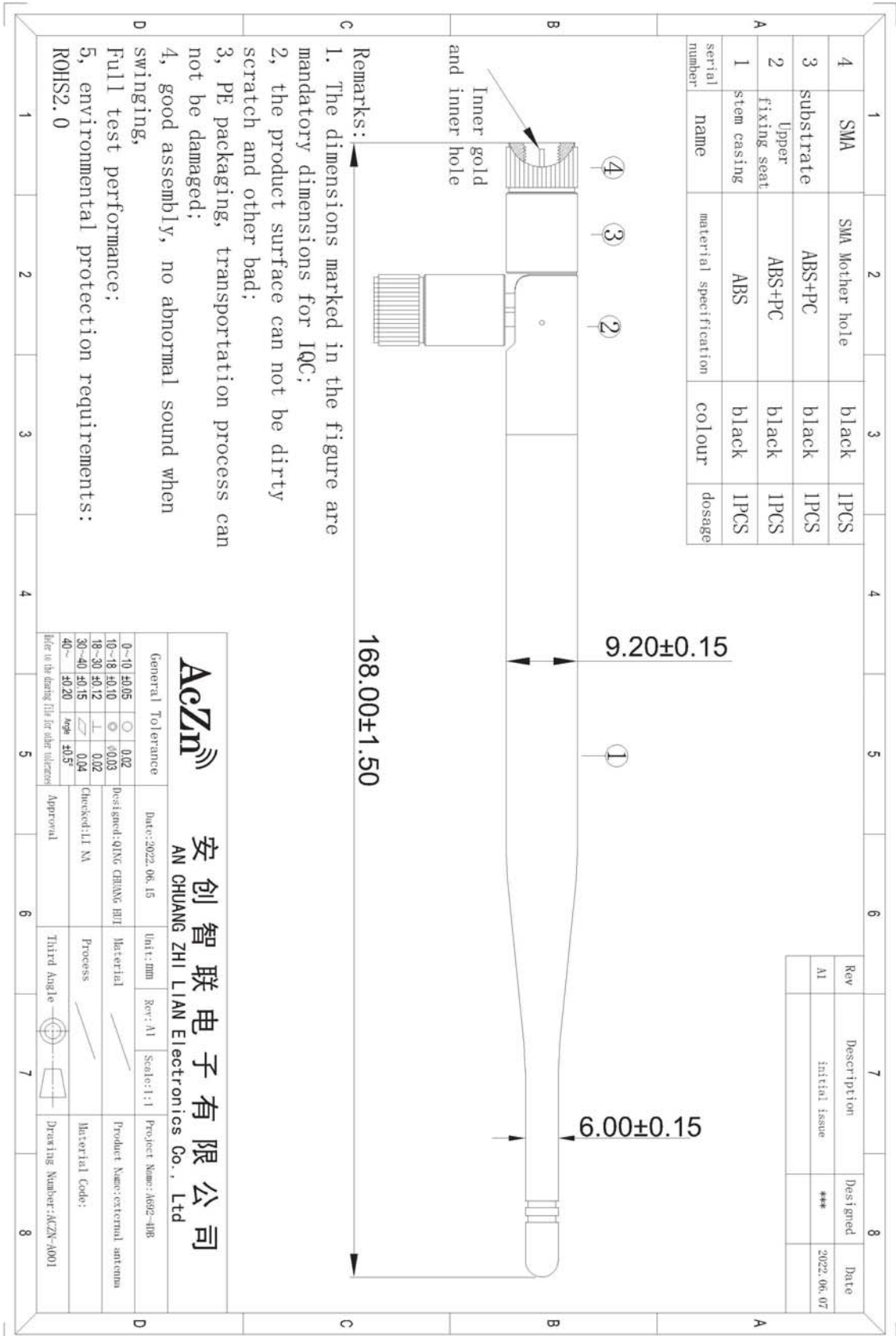
5、Passive test indicator

Frequency / MHz	Efficiency / dB	Efficiency / %	Gain / dBi
2400	-3.07	49.32	3.06
2410	-2.83	52.12	3.35
2420	-2.86	51.76	3.13
2430	-2.83	52.12	3.44
2440	-2.52	55.98	3.73
2450	-2.54	55.72	4
2460	-2.63	54.58	3.91
2470	-2.48	56.49	4.22
2480	-2.55	55.59	4.19
2490	-2.65	54.33	4.26
2500	-2.5	56.23	4.4
5100	-4.82	32.96	4.93
5150	-5.21	30.13	4.52
5200	-5.04	31.33	4.8
5250	-5.21	30.13	4.43
5300	-5.04	31.33	4.22
5350	-5.03	31.41	4.32
5400	-5.14	30.62	4.48
5450	-4.84	32.81	4.7
5500	-4.74	33.57	4.8
5550	-4.88	32.51	4.35
5600	-4.73	33.65	4.49
5650	-5.11	30.83	4.05
5700	-4.92	32.21	4.64
5750	-4.84	32.81	4.62
5800	-5.07	31.12	3.76





6. structurechart:



7. packaging:

