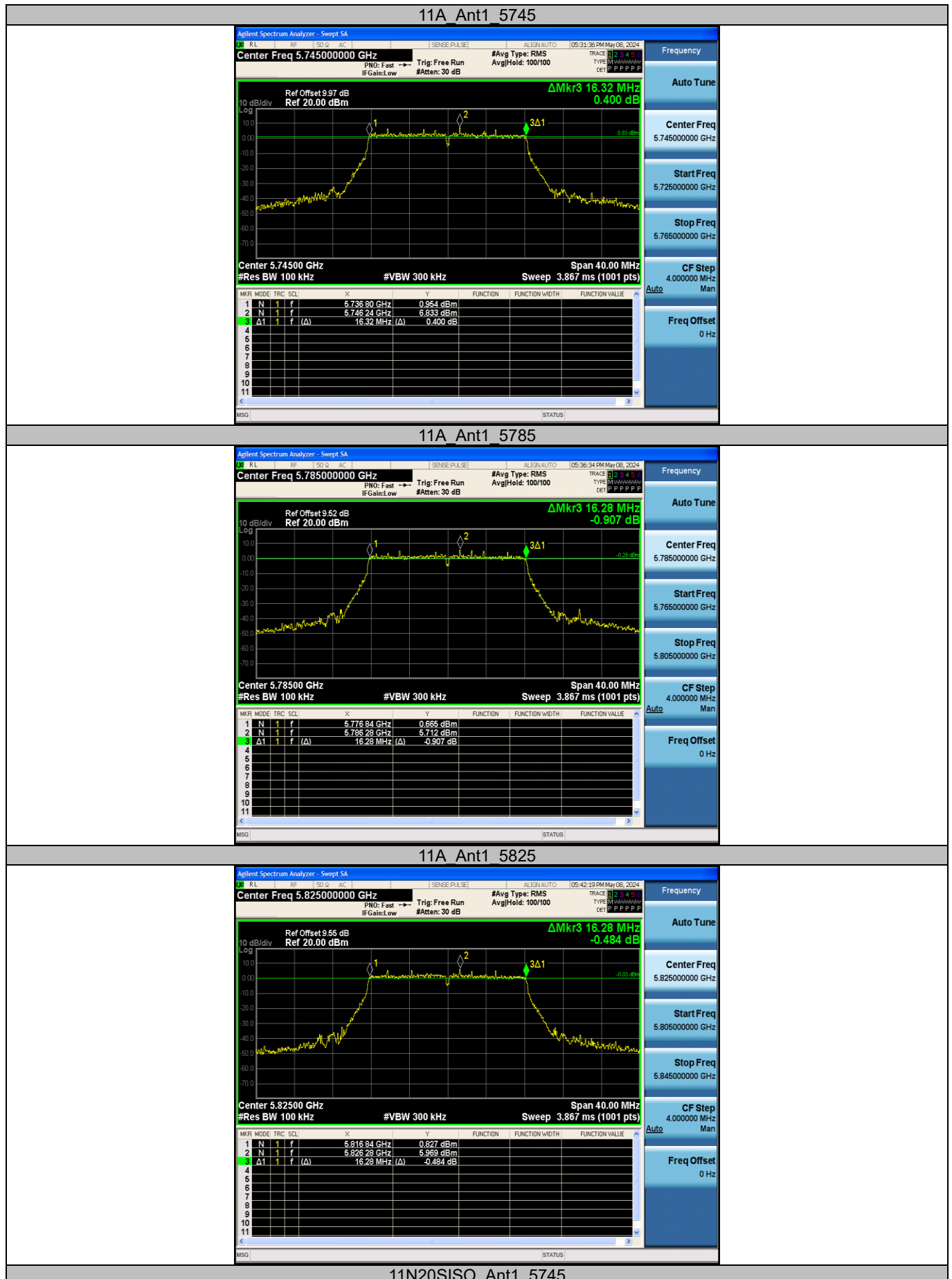
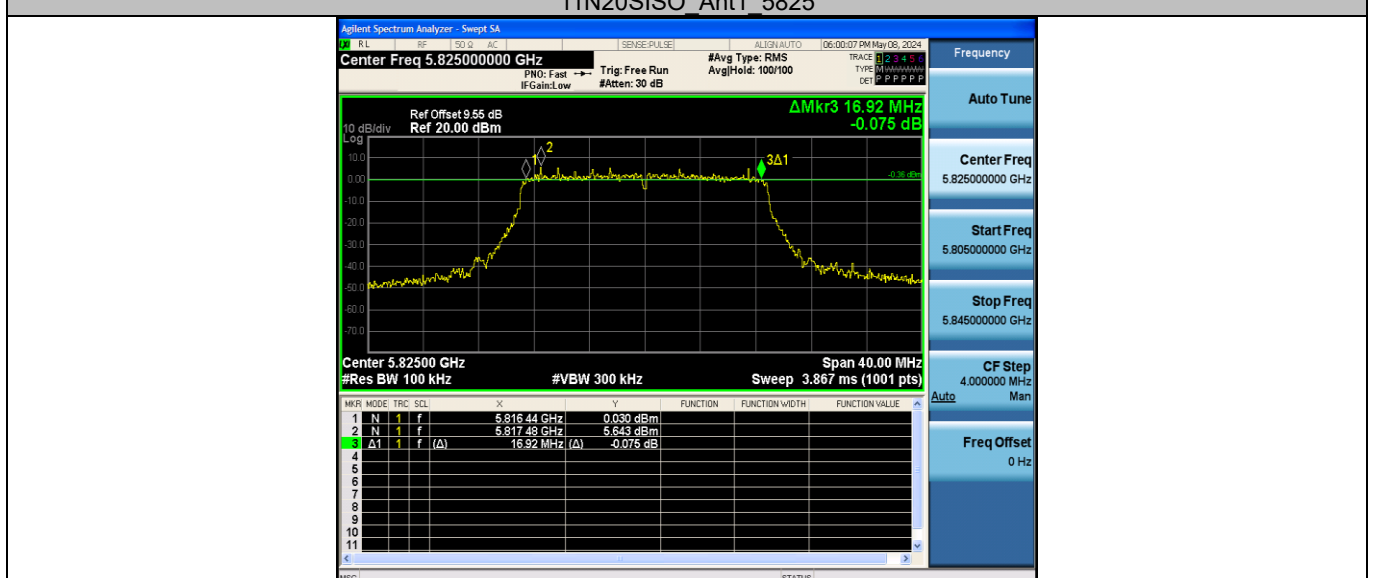
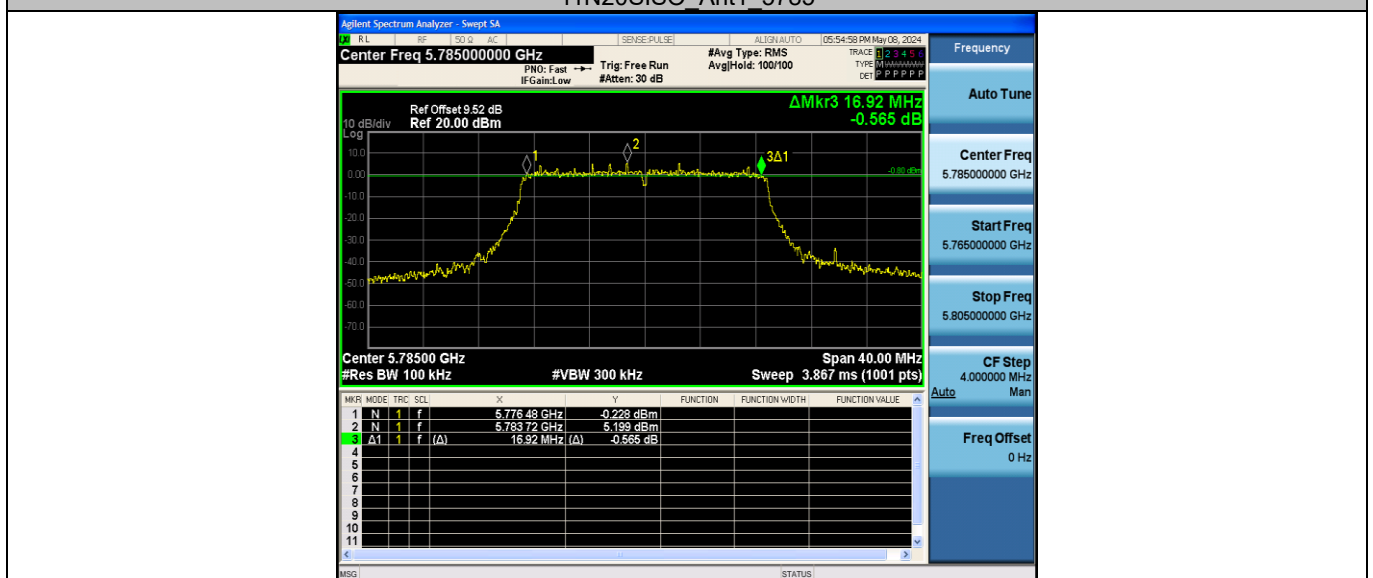
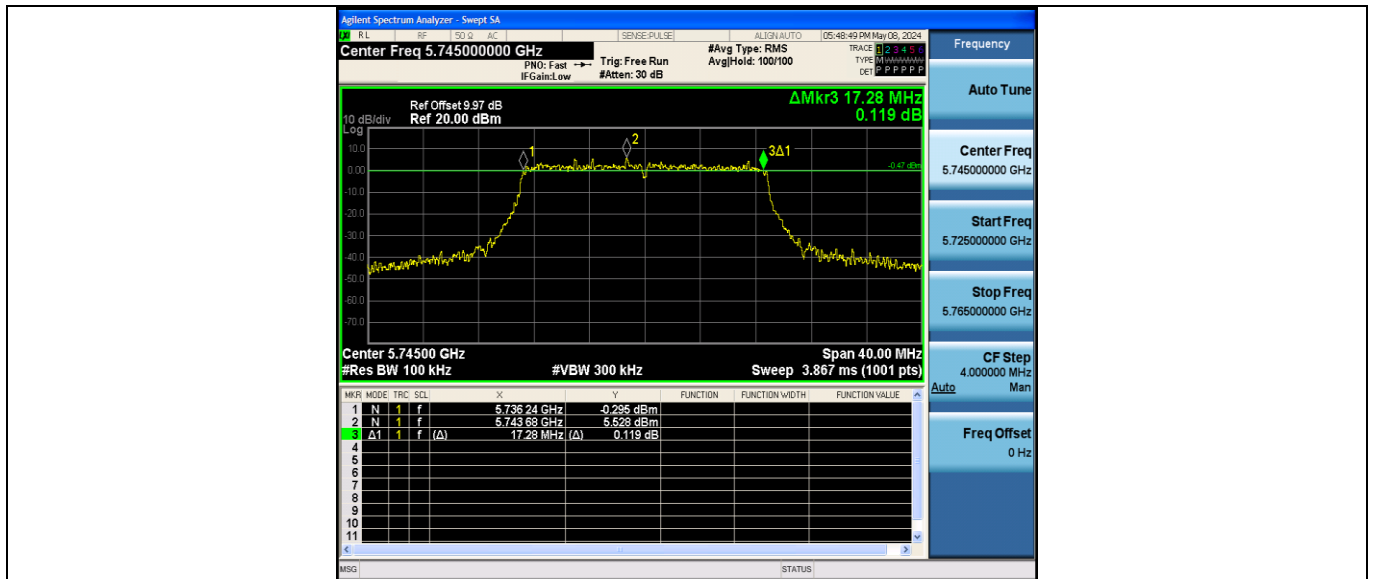


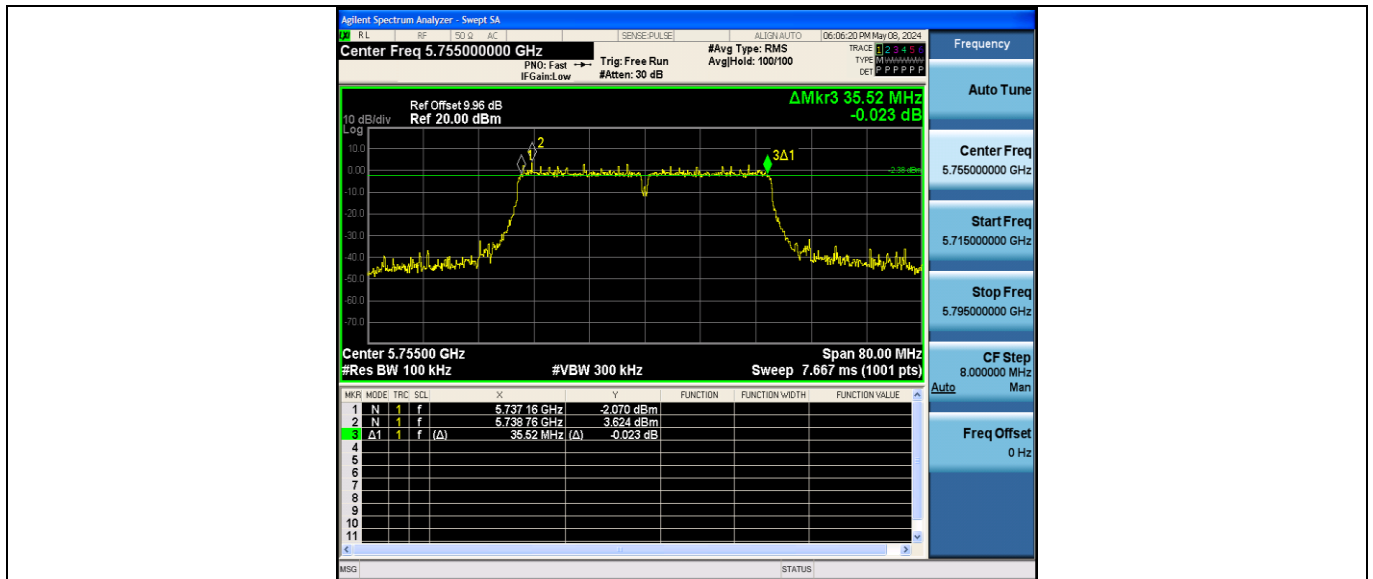
Appendix A3: Min emission bandwidth

Test Result B4

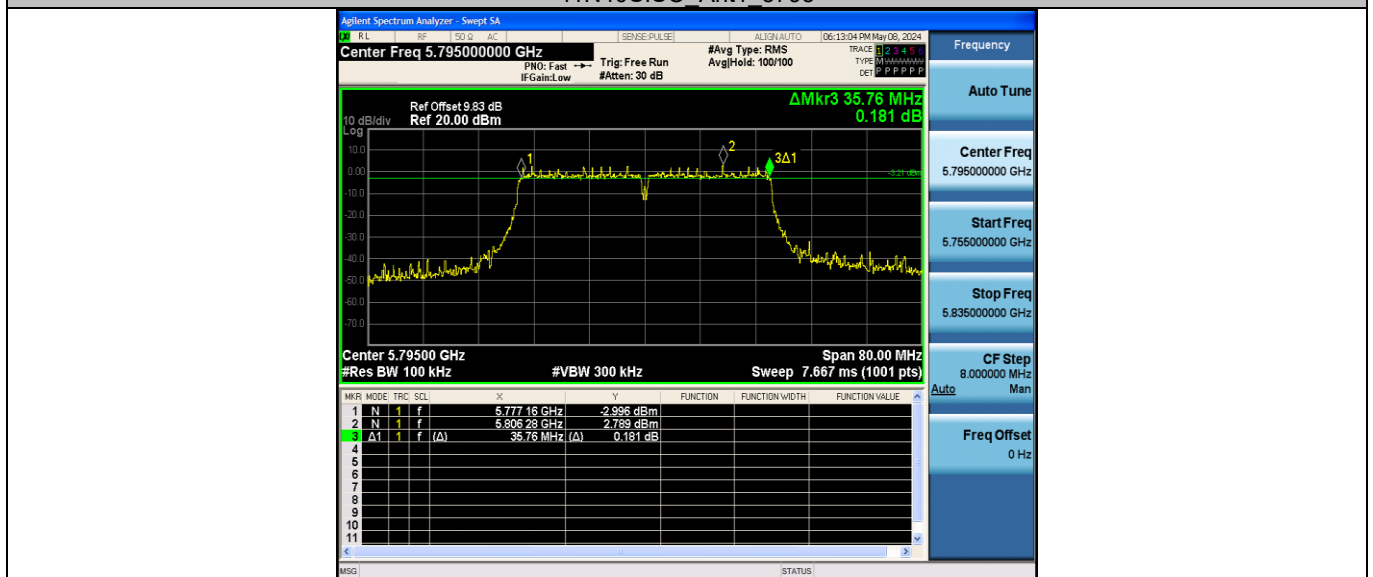
TestMode	Antenna	Frequency[MHz]	6db EBW [MHz]	FL[MHz]	FH[MHz]	Limit[MHz]	Verdict
11A	Ant1	5745	16.320	5736.800	5753.120	0.5	PASS
		5785	16.280	5776.840	5793.120	0.5	PASS
		5825	16.280	5816.840	5833.120	0.5	PASS
11N20SISO	Ant1	5745	17.280	5736.240	5753.520	0.5	PASS
		5785	16.920	5776.480	5793.400	0.5	PASS
		5825	16.920	5816.440	5833.360	0.5	PASS
11N40SISO	Ant1	5755	35.520	5737.160	5772.680	0.5	PASS
		5795	35.760	5777.160	5812.920	0.5	PASS
11AC20SISO	Ant1	5745	17.240	5736.240	5753.480	0.5	PASS
		5785	16.920	5776.520	5793.440	0.5	PASS
		5825	17.000	5816.480	5833.480	0.5	PASS
11AC40SISO	Ant1	5755	35.600	5737.160	5772.760	0.5	PASS
		5795	35.600	5777.240	5812.840	0.5	PASS
11AC80SISO	Ant1	5775	75.360	5737.400	5812.760	0.5	PASS

Test Graphs B4


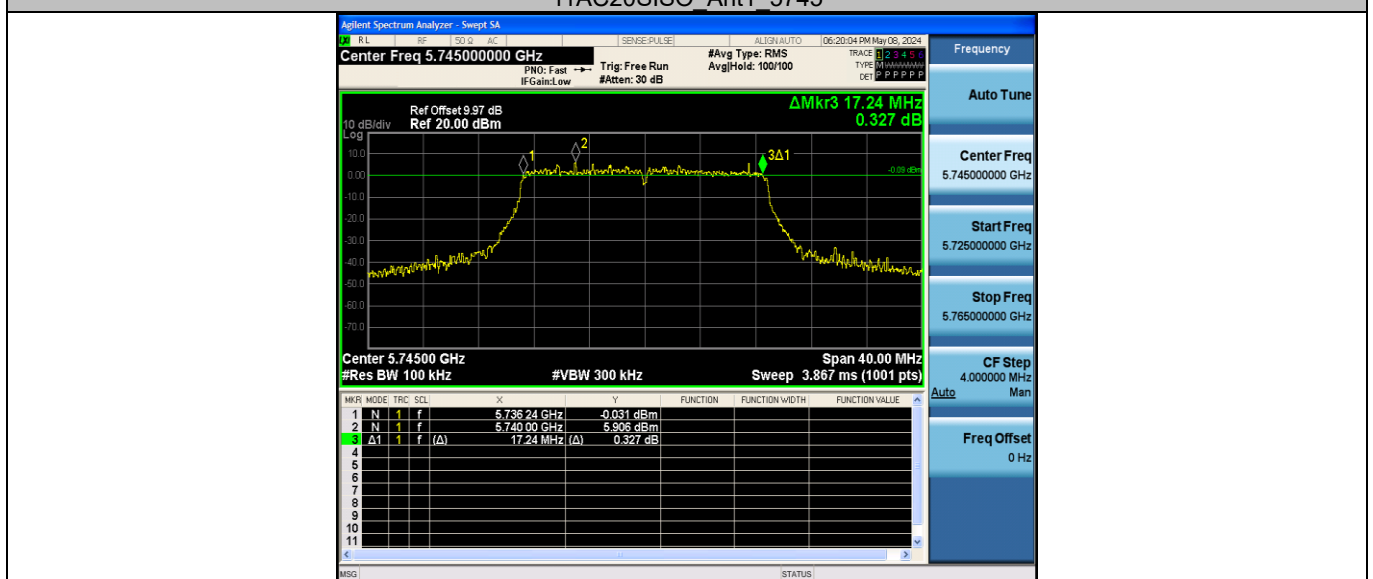




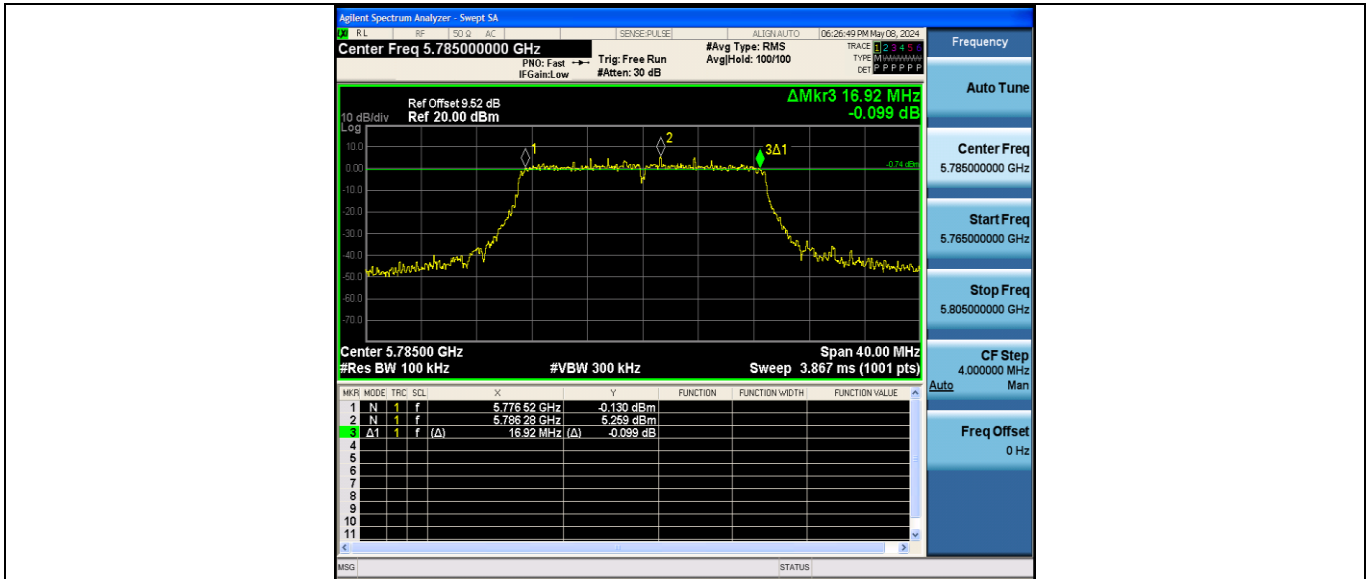
11N40SISO Ant1_5795



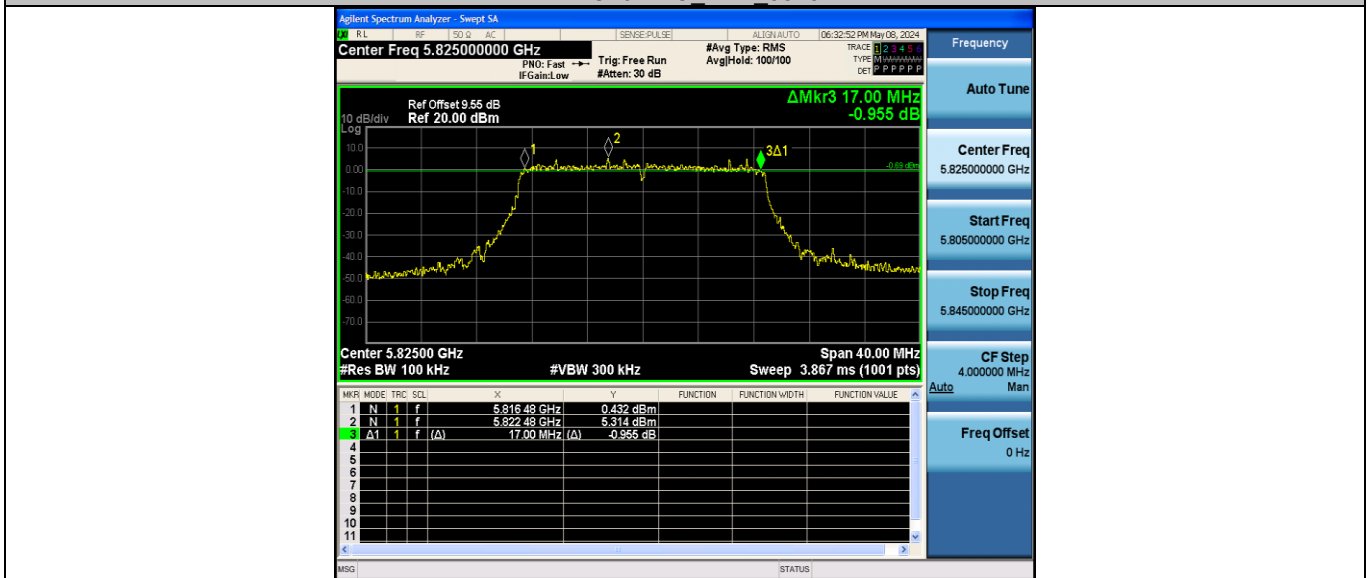
11AC20SISO Ant1_5745



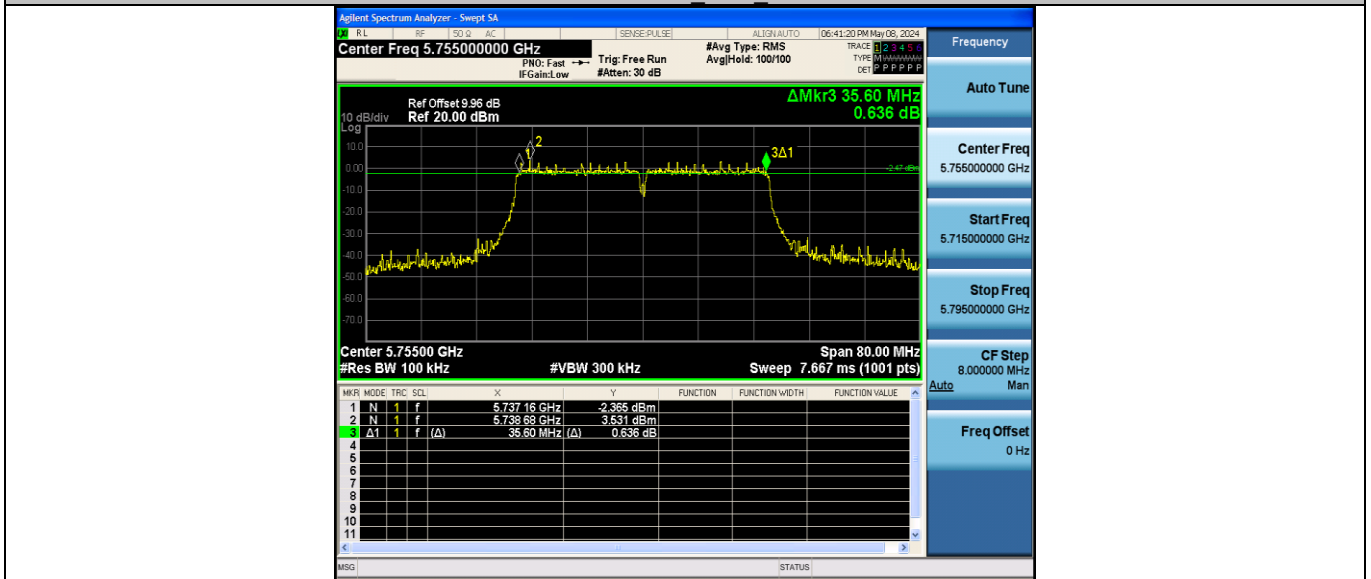
11AC20SISO Ant1_5785



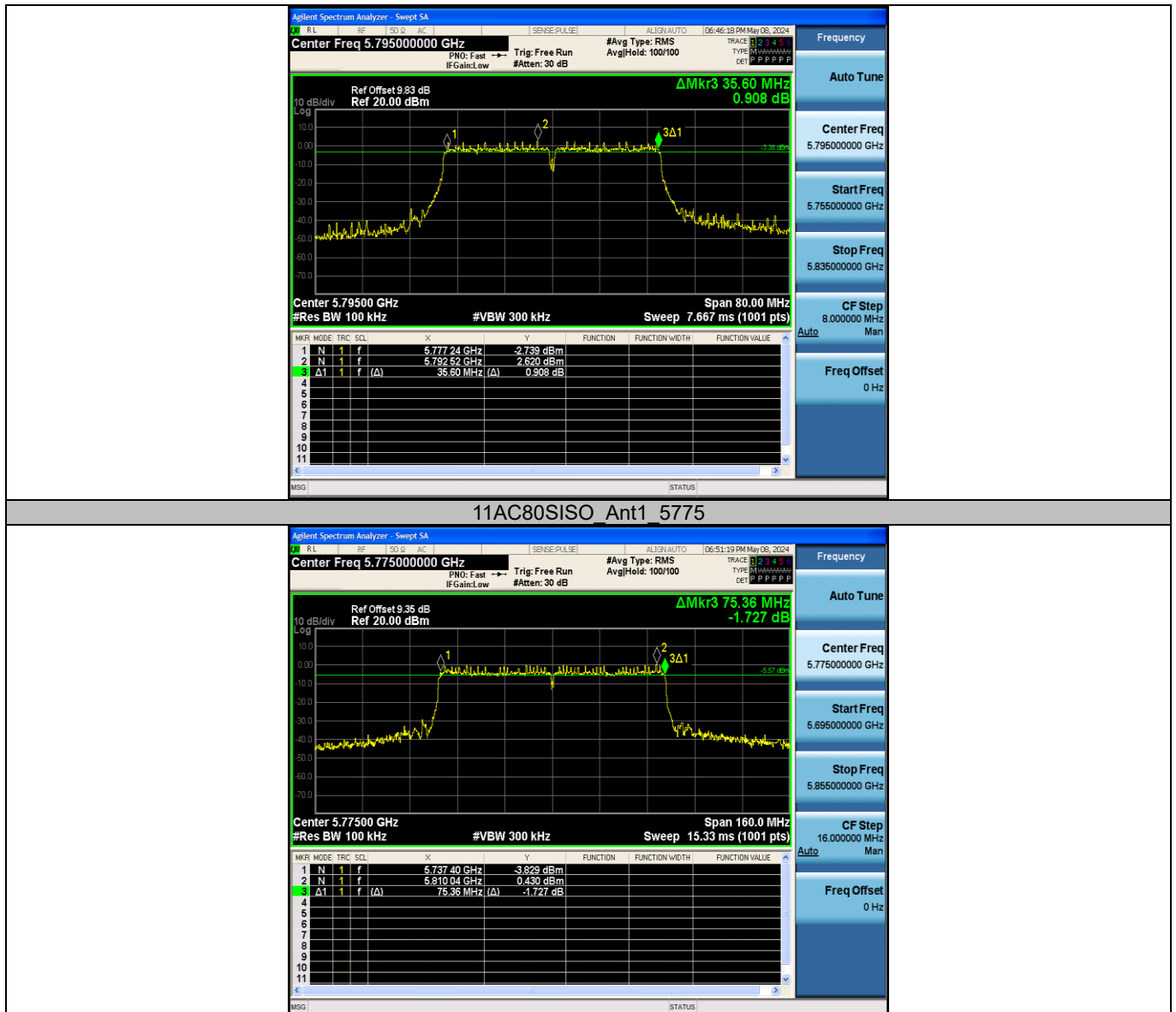
11AC20SISO Ant1 5825



11AC40SISO Ant1 5755



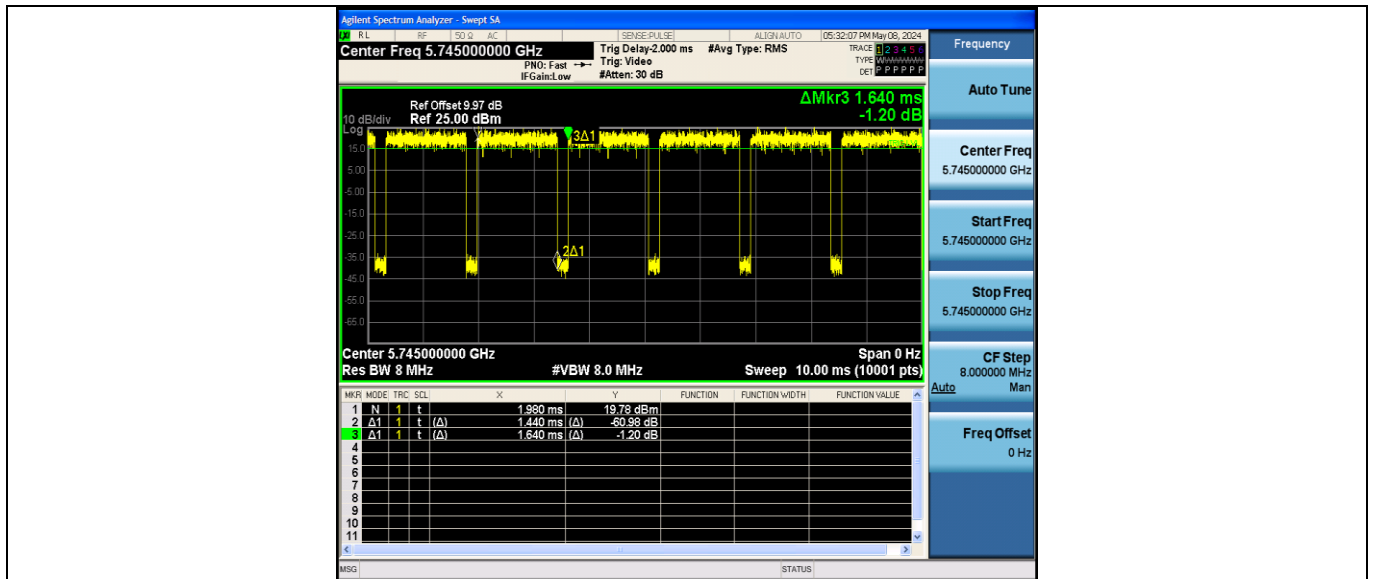
11AC40SISO Ant1 5795



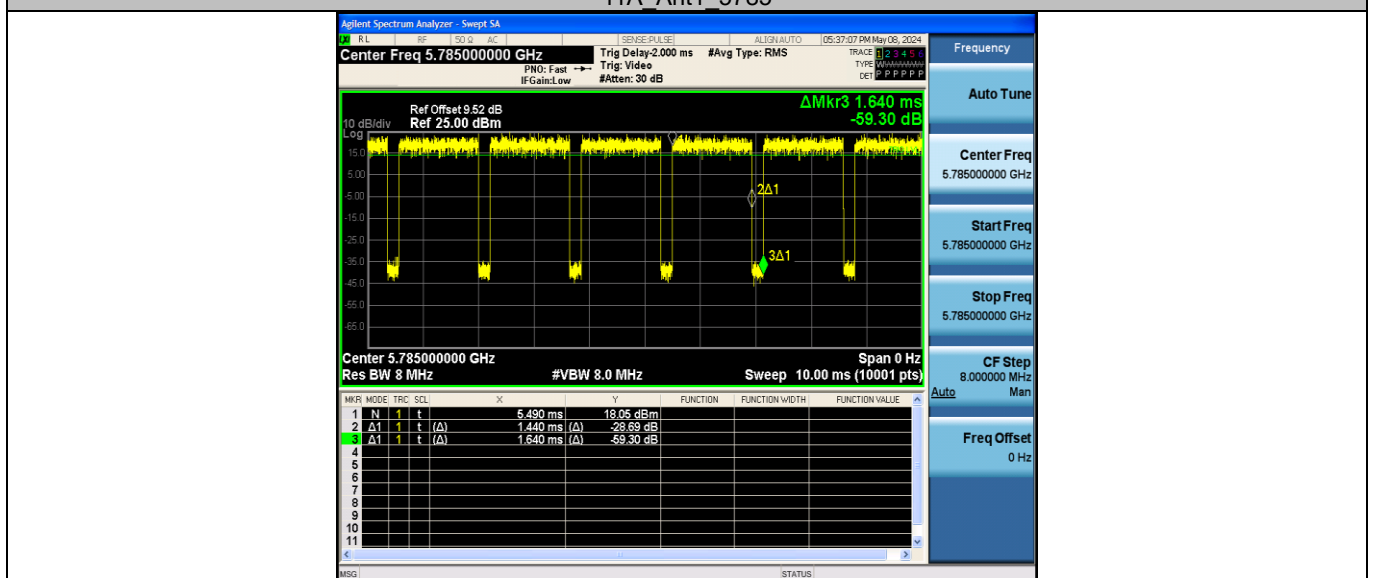
**Appendix B: Duty Cycle
 Test Result**

TestMode	Antenna	Frequency[MHz]	Transmission Duration [ms]	Transmission Period [ms]	Duty Cycle [%]
11A	Ant1	5180	1.44	1.64	87.80
		5200	1.44	1.65	87.27
		5240	1.43	1.64	87.20
		5745	1.44	1.64	87.80
		5785	1.44	1.64	87.80
		5825	1.44	1.65	87.27
11N20SISO	Ant1	5180	1.34	1.55	86.45
		5200	1.35	1.56	86.54
		5240	1.35	1.55	87.10
		5745	1.35	1.55	87.10
		5785	1.35	1.56	86.54
		5825	1.35	1.55	87.10
11N40SISO	Ant1	5190	0.66	0.87	75.86
		5230	0.67	0.87	77.01
		5755	0.66	0.87	75.86
		5795	0.67	0.87	77.01
11AC20SISO	Ant1	5180	1.36	1.56	87.18
		5200	1.36	1.56	87.18
		5240	1.36	1.57	86.62
		5745	1.36	1.56	87.18
		5785	1.36	1.56	87.18
		5825	1.35	1.56	86.54
11AC40SISO	Ant1	5190	0.68	0.88	77.27
		5230	0.68	0.88	77.27
		5755	0.67	0.88	76.14
		5795	0.68	0.88	77.27
11AC80SISO	Ant1	5210	0.33	0.53	62.26
		5775	0.34	0.54	62.96

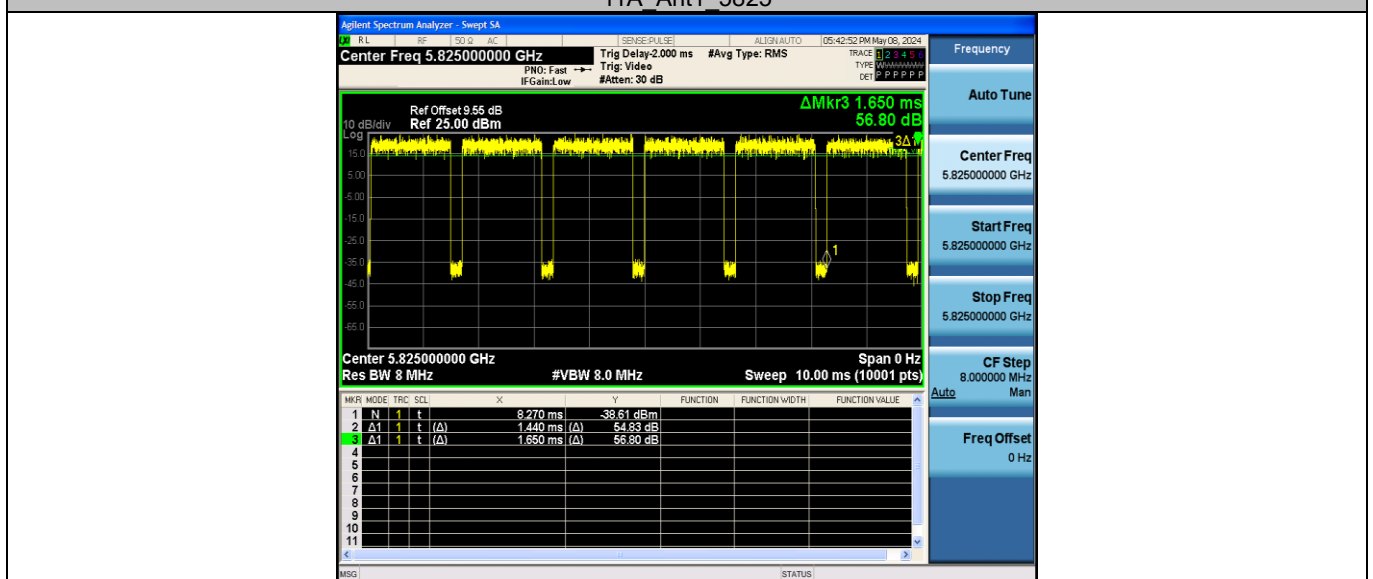
Test Graphs

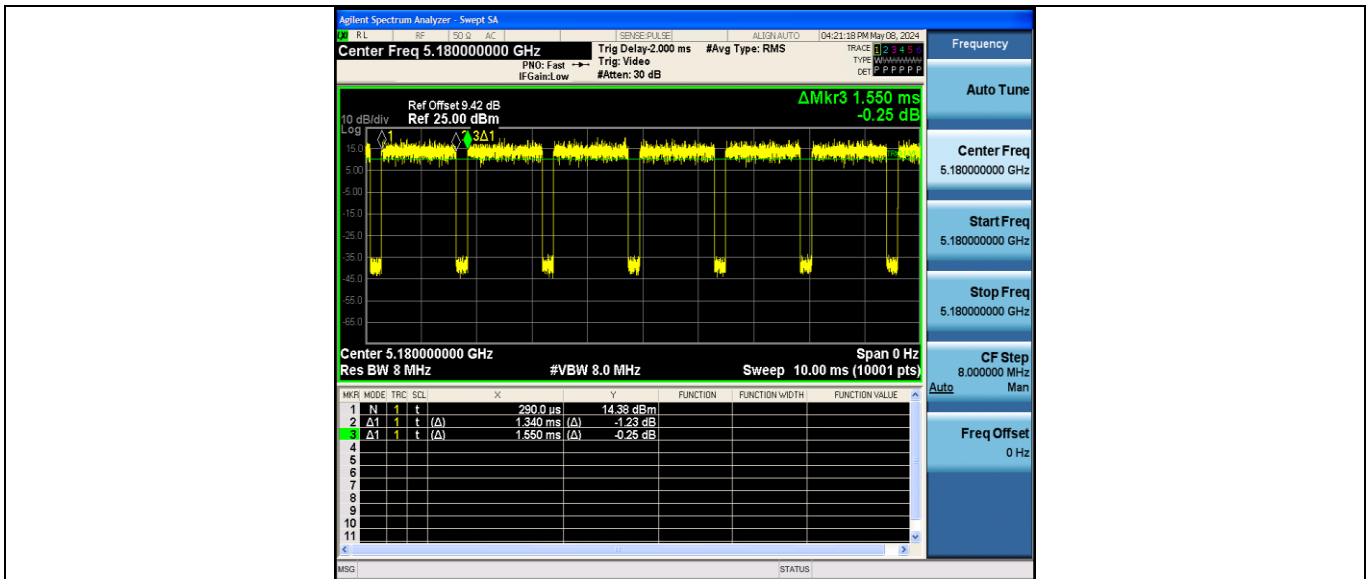
11A Ant1 5785



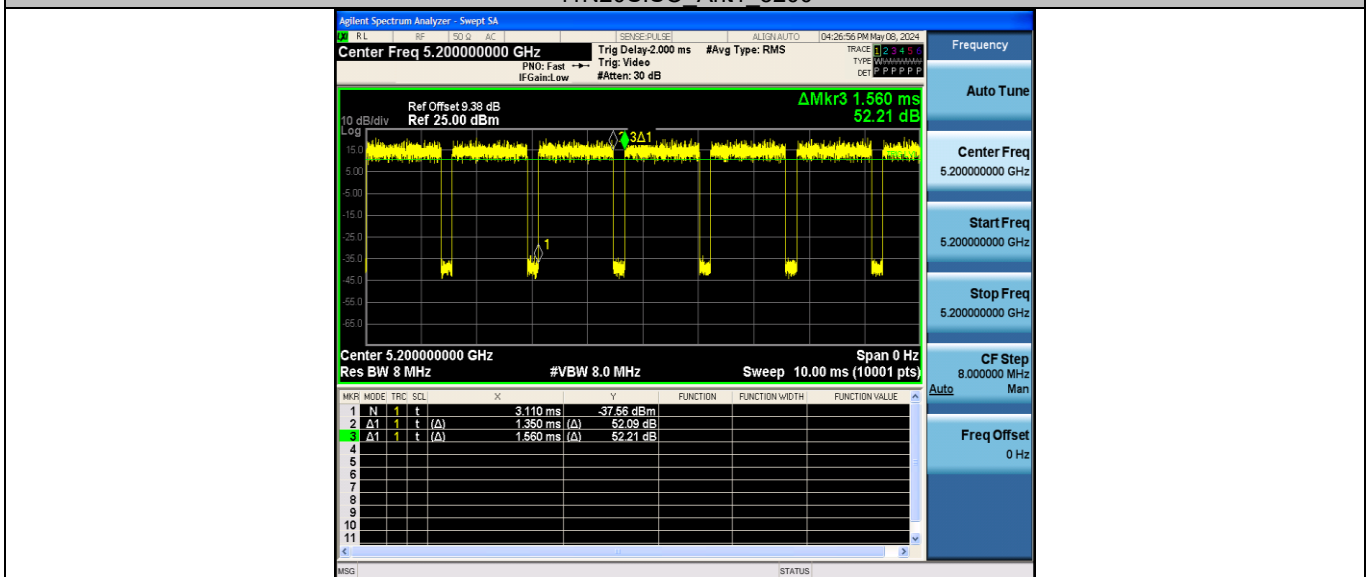
11A Ant1 5825



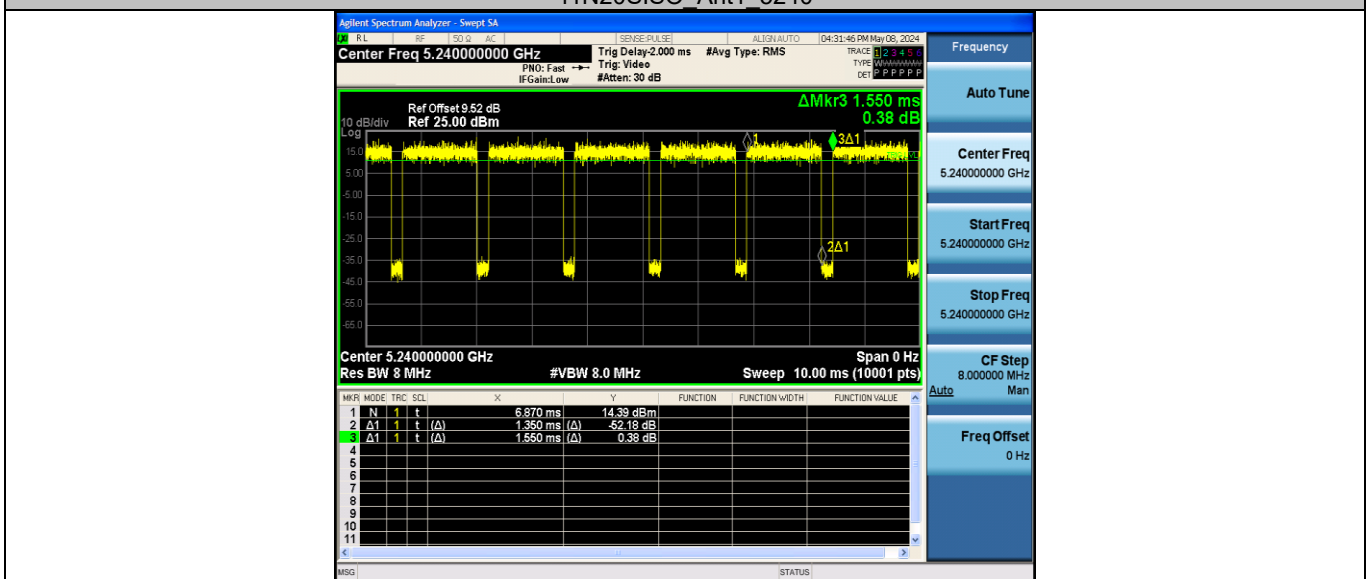
11N20SISO_Ant1_5180



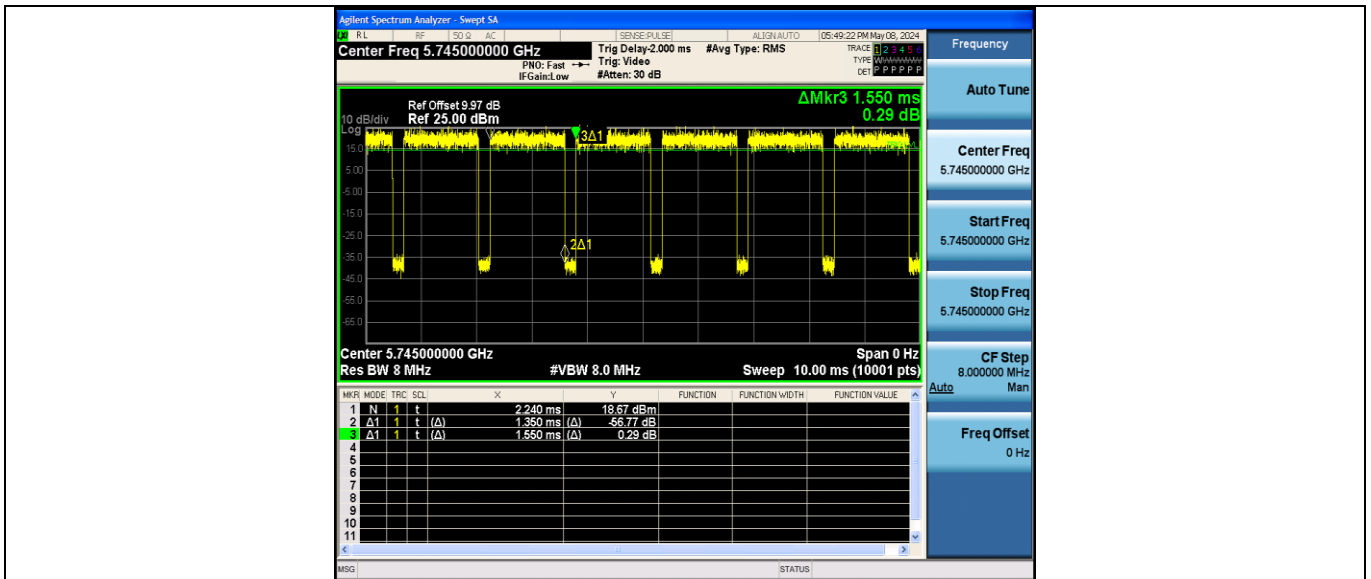
11N20SISO_Ant1_5200



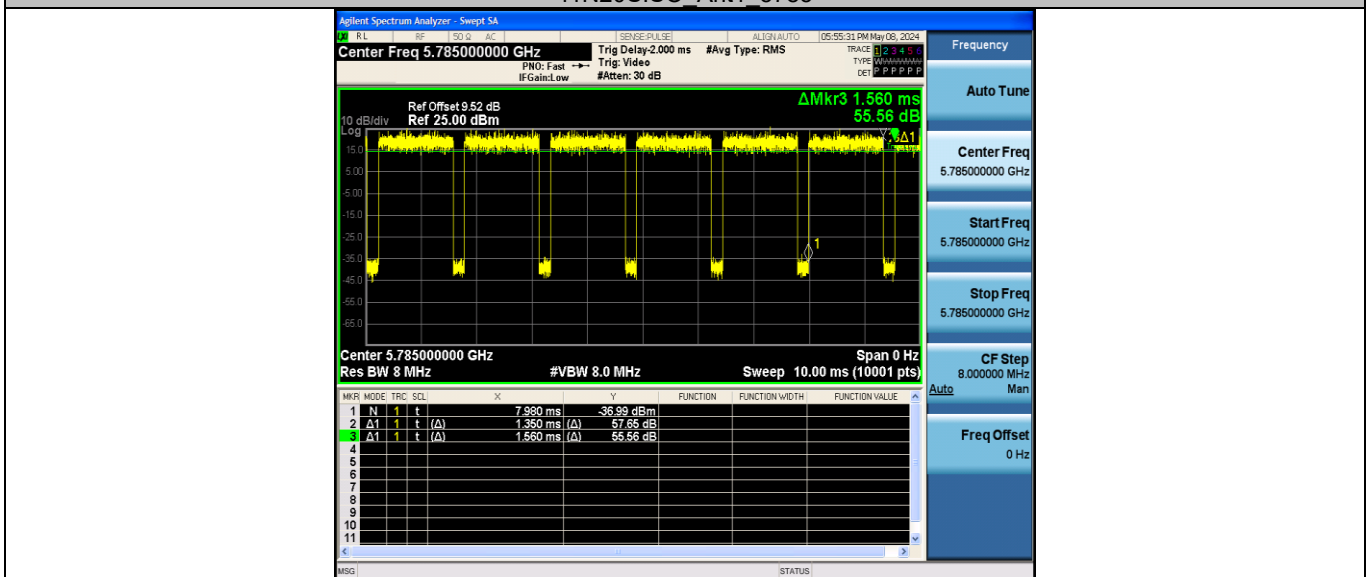
11N20SISO_Ant1_5240



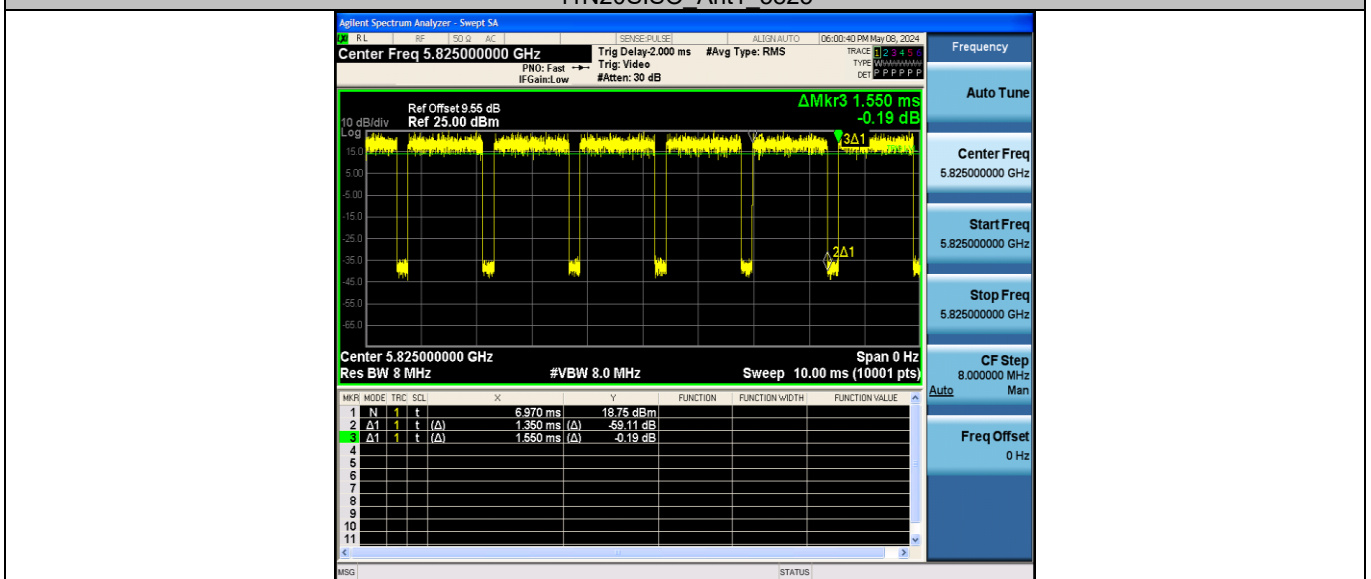
11N20SISO_Ant1_5745



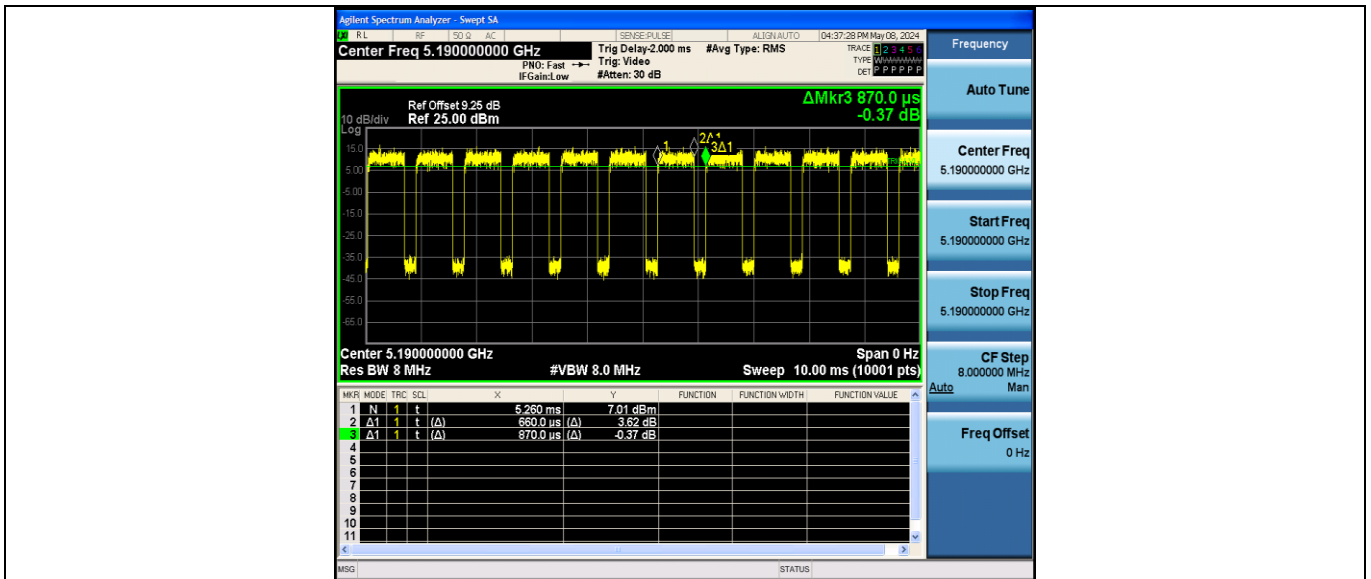
11N20SISO Ant1_5785



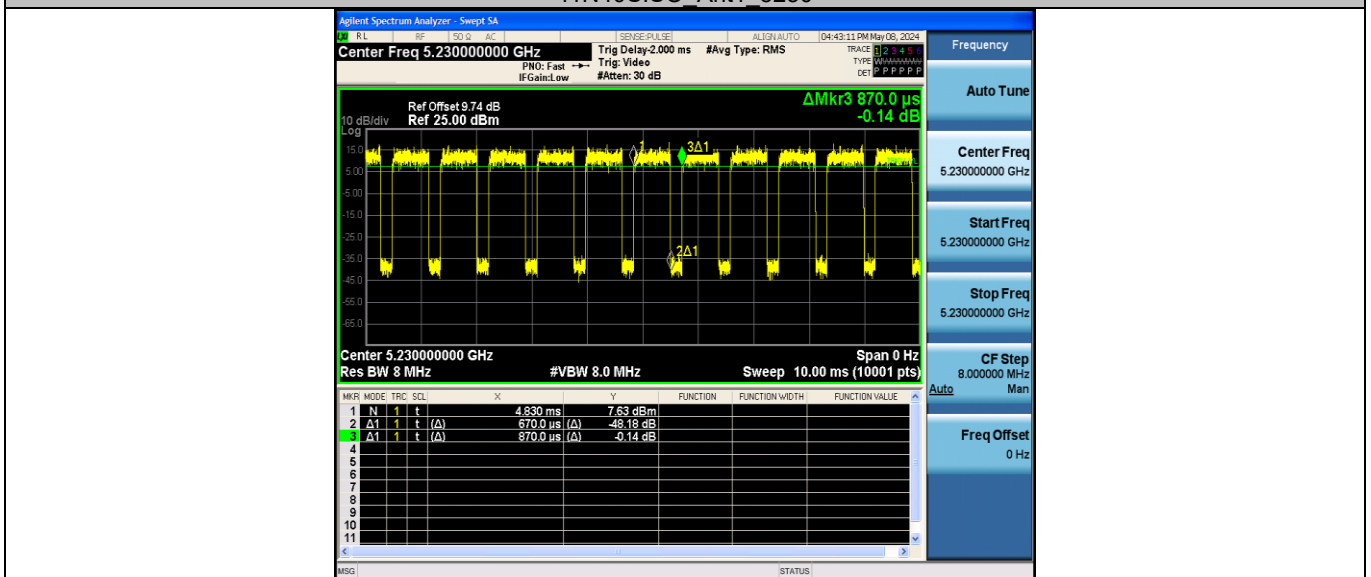
11N20SISO Ant1_5825



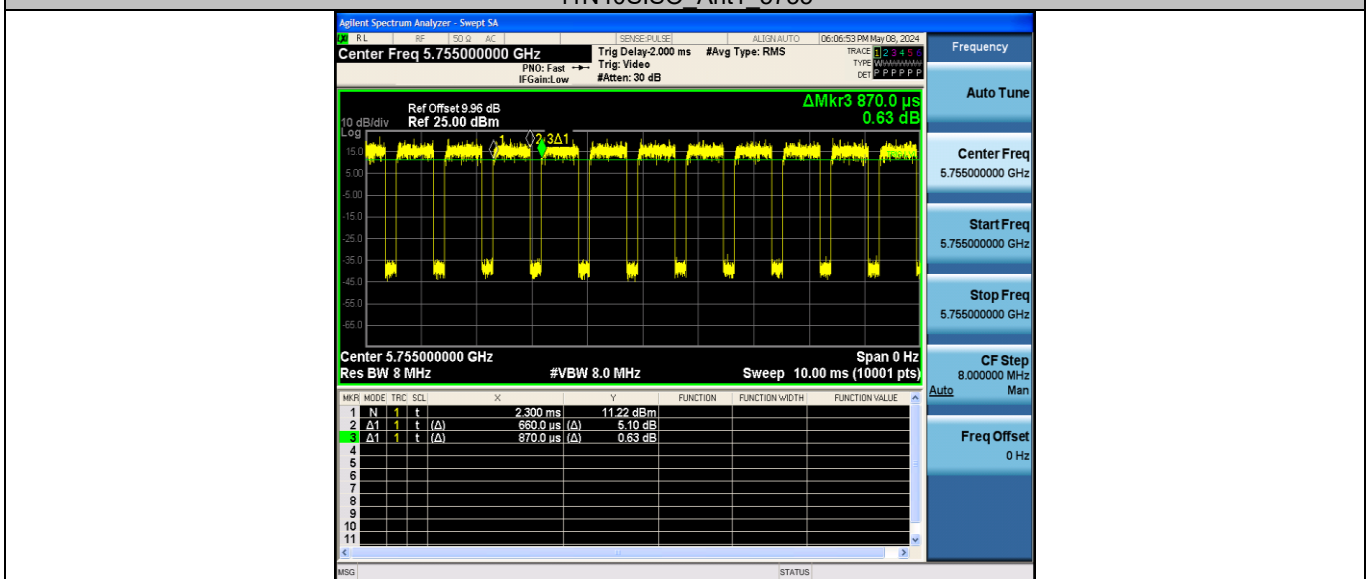
11N40SISO Ant1_5190



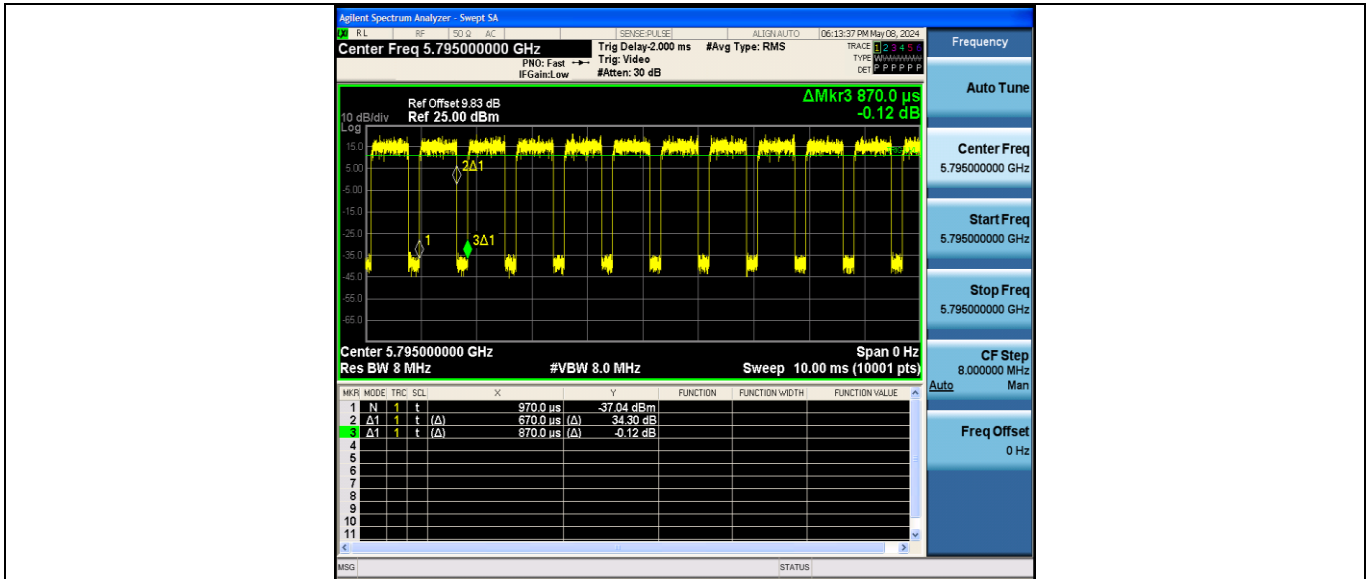
11N40SISO Ant1_5230



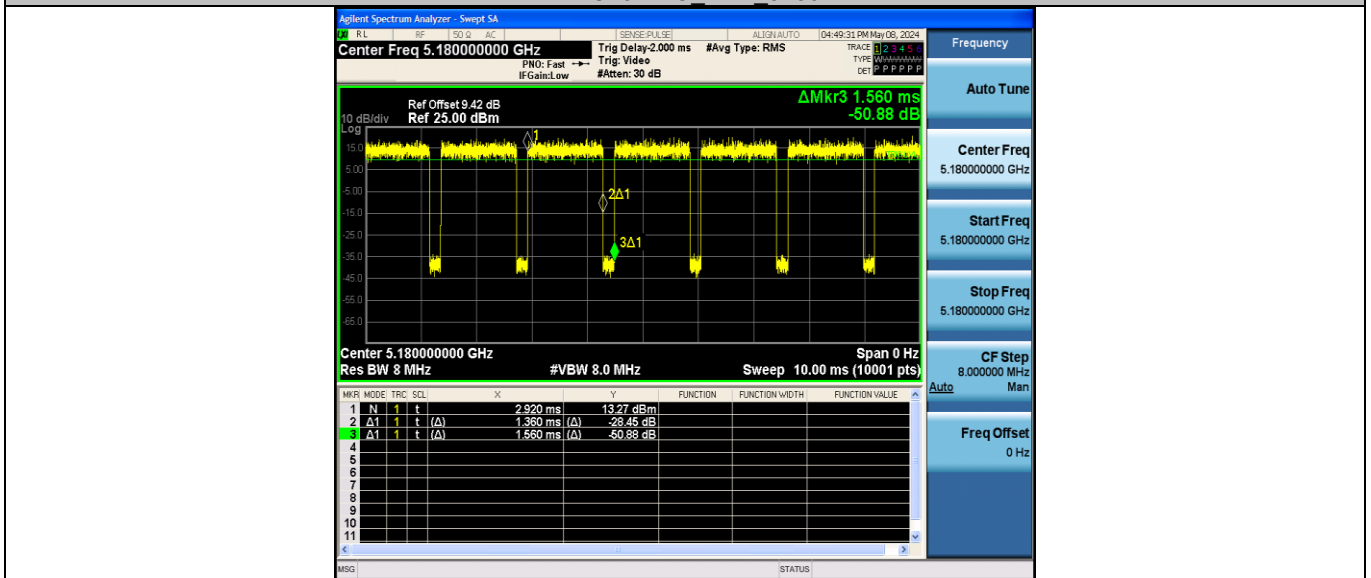
11N40SISO Ant1_5755



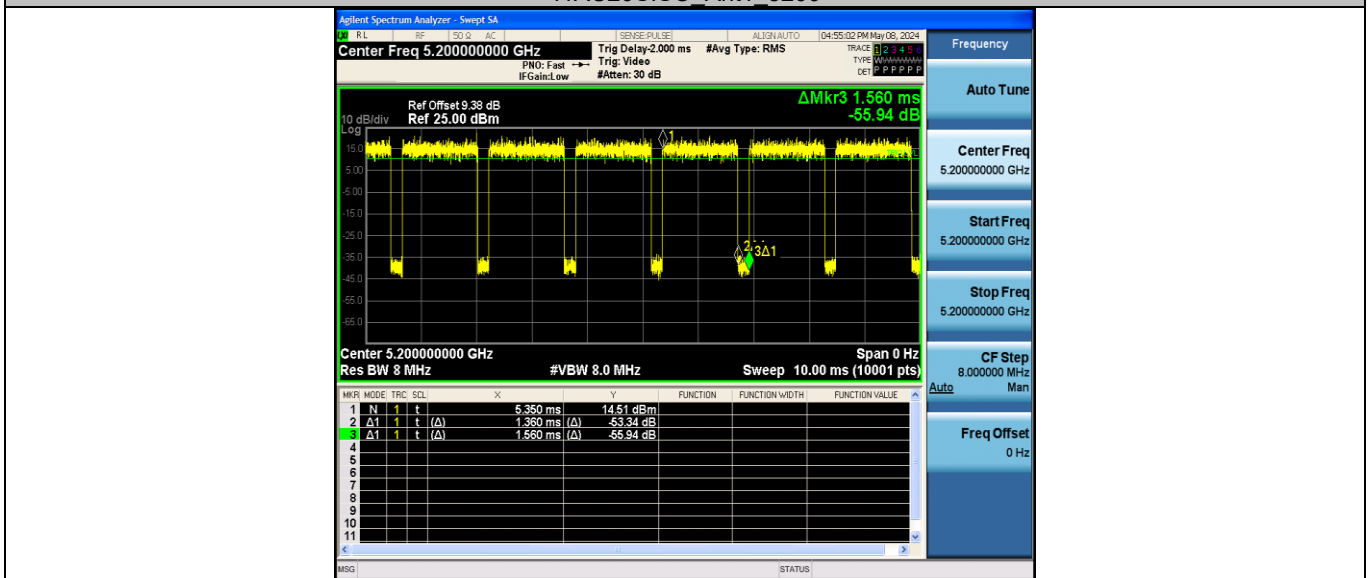
11N40SISO Ant1_5795



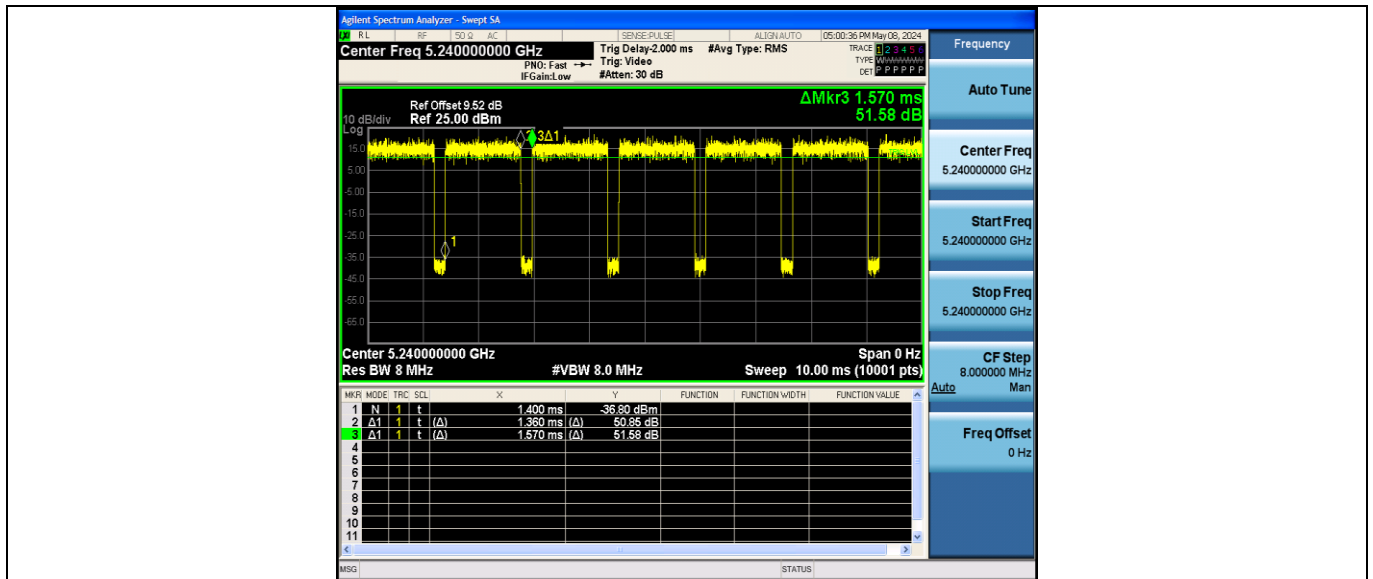
11AC20SISO Ant1 5180



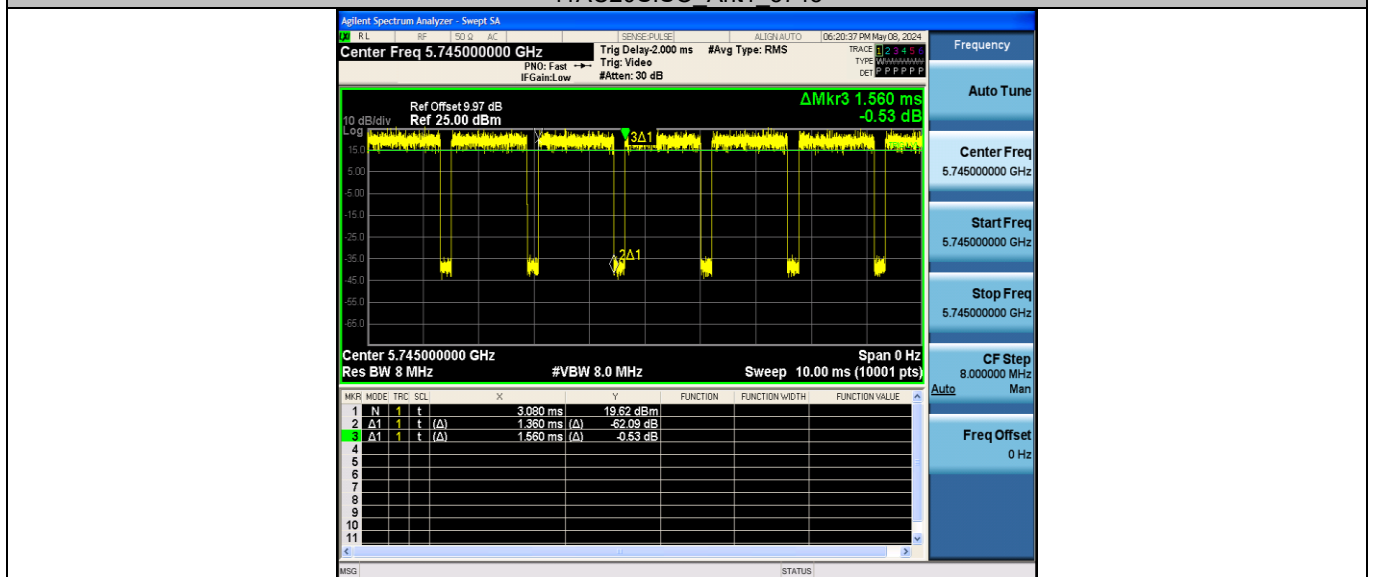
11AC20SISO Ant1 5200



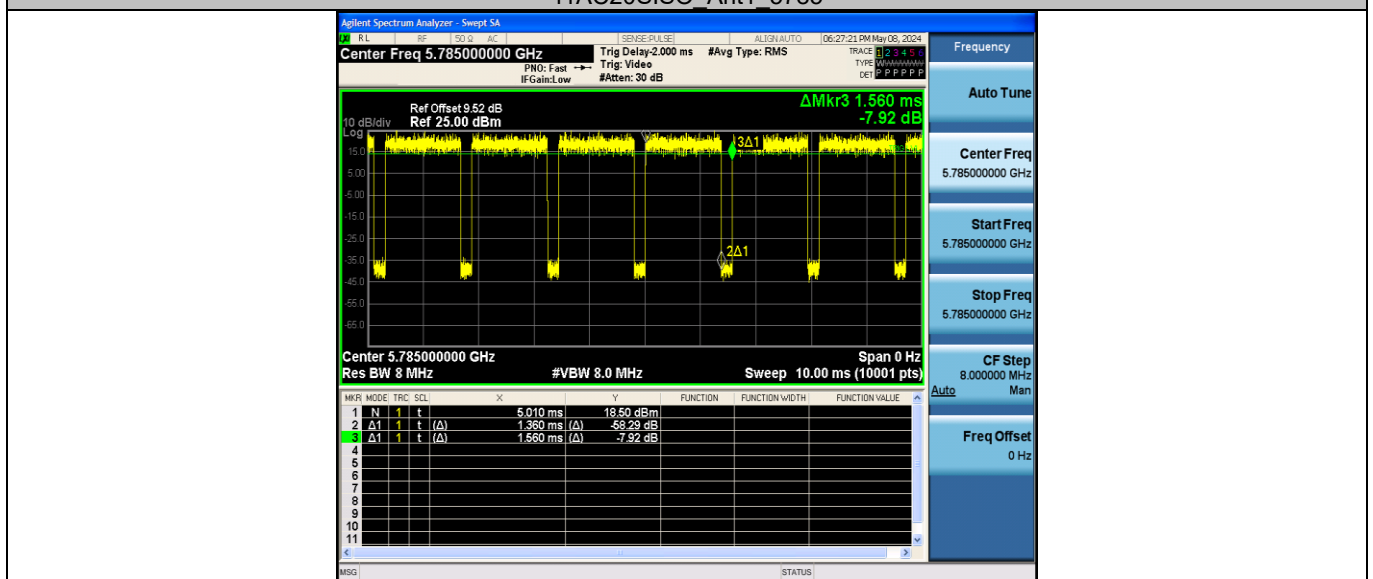
11AC20SISO Ant1 5240



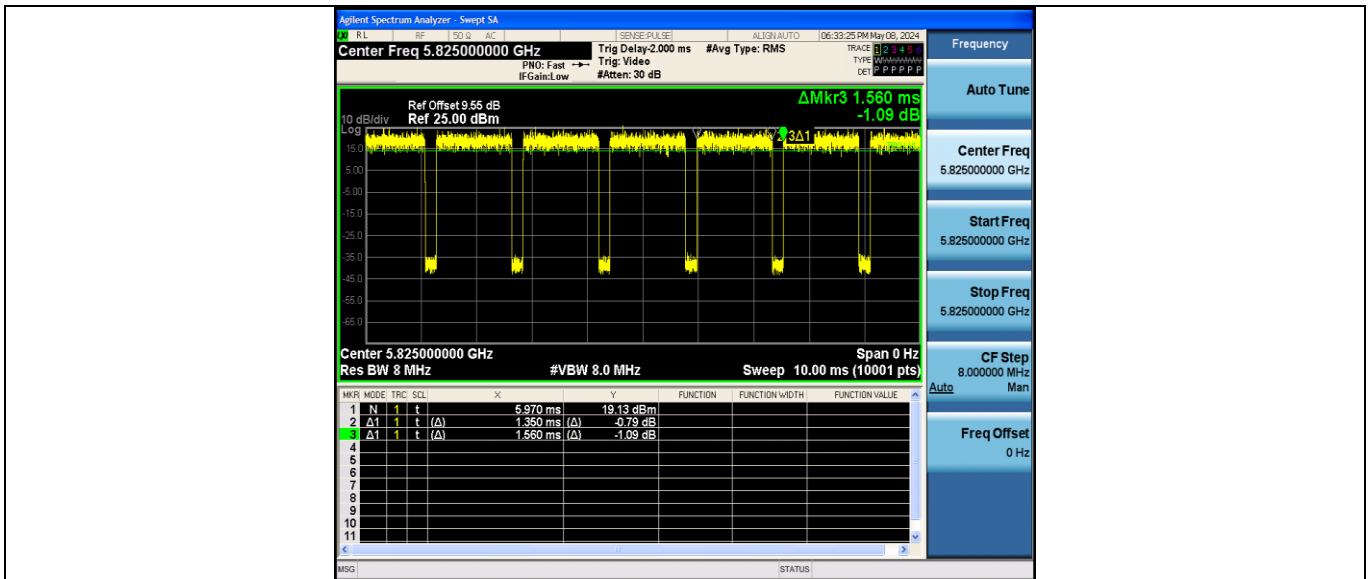
11AC20SISO_Ant1_5745



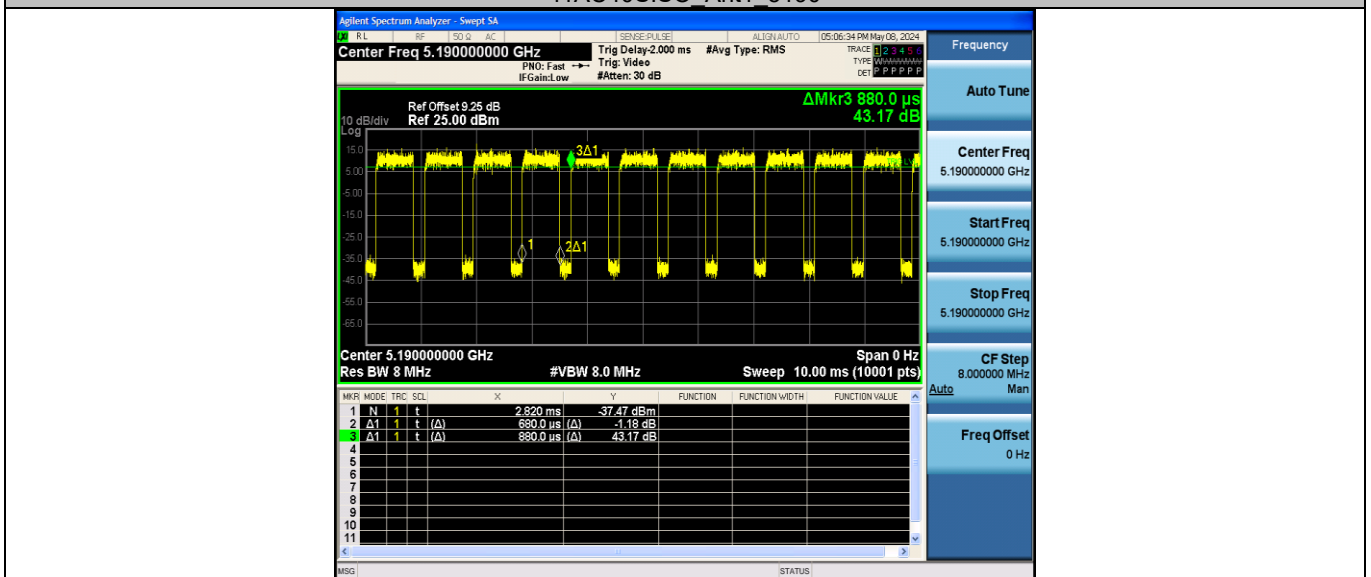
11AC20SISO_Ant1_5785



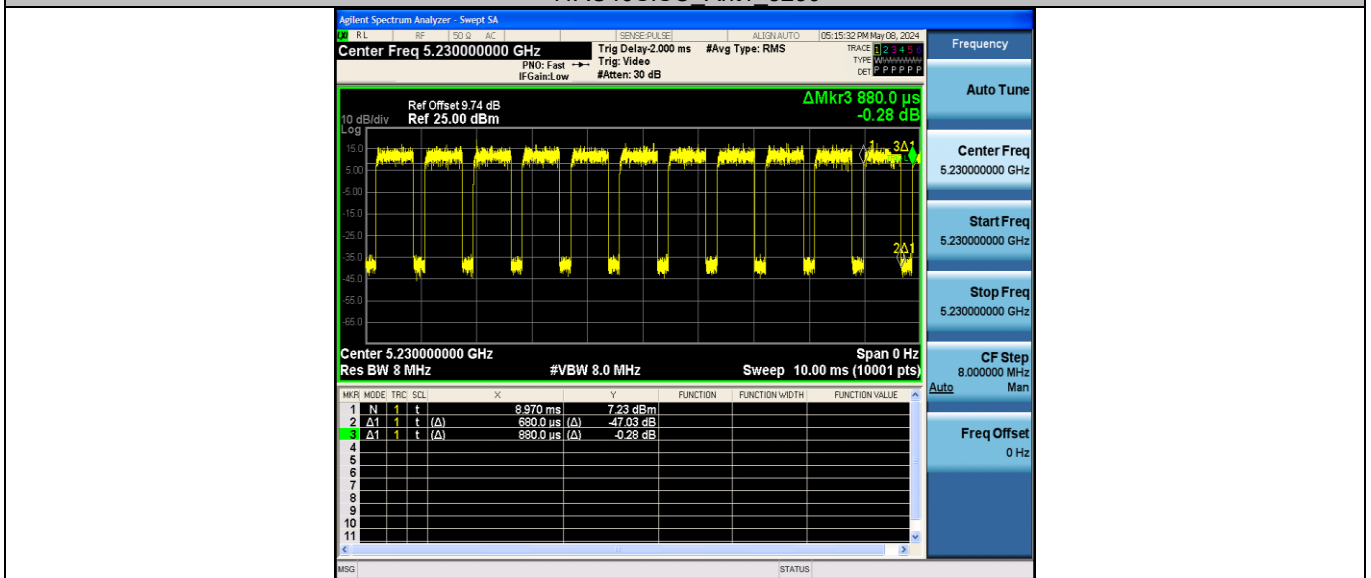
11AC20SISO_Ant1_5825



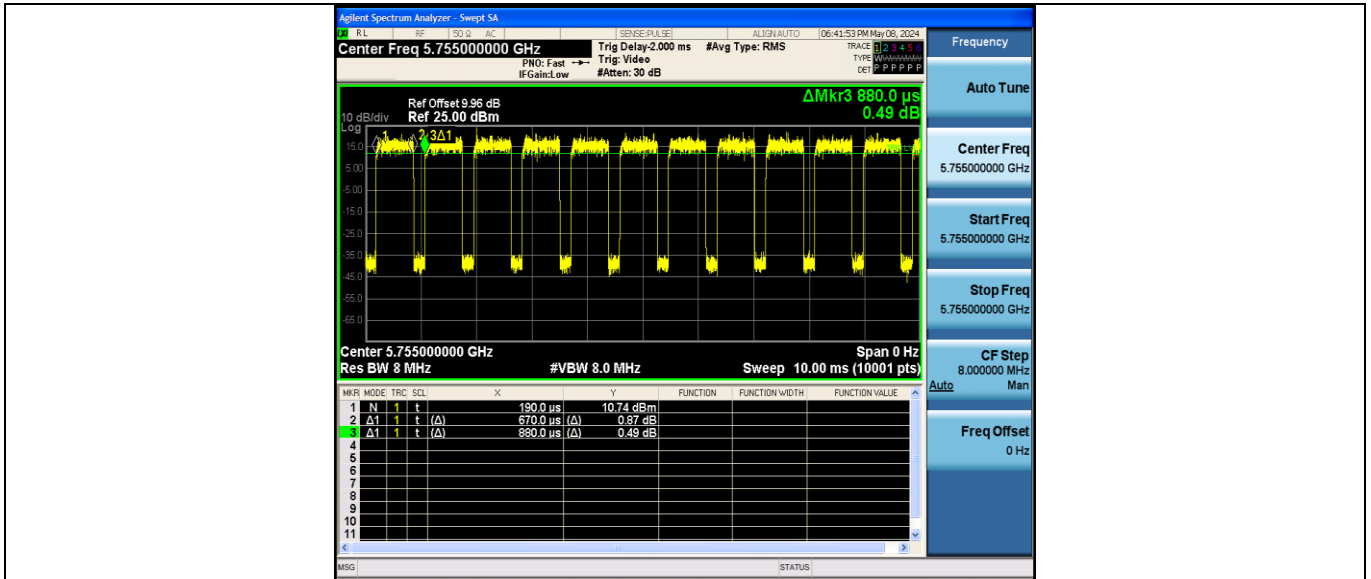
11AC40SISO Ant1 5190



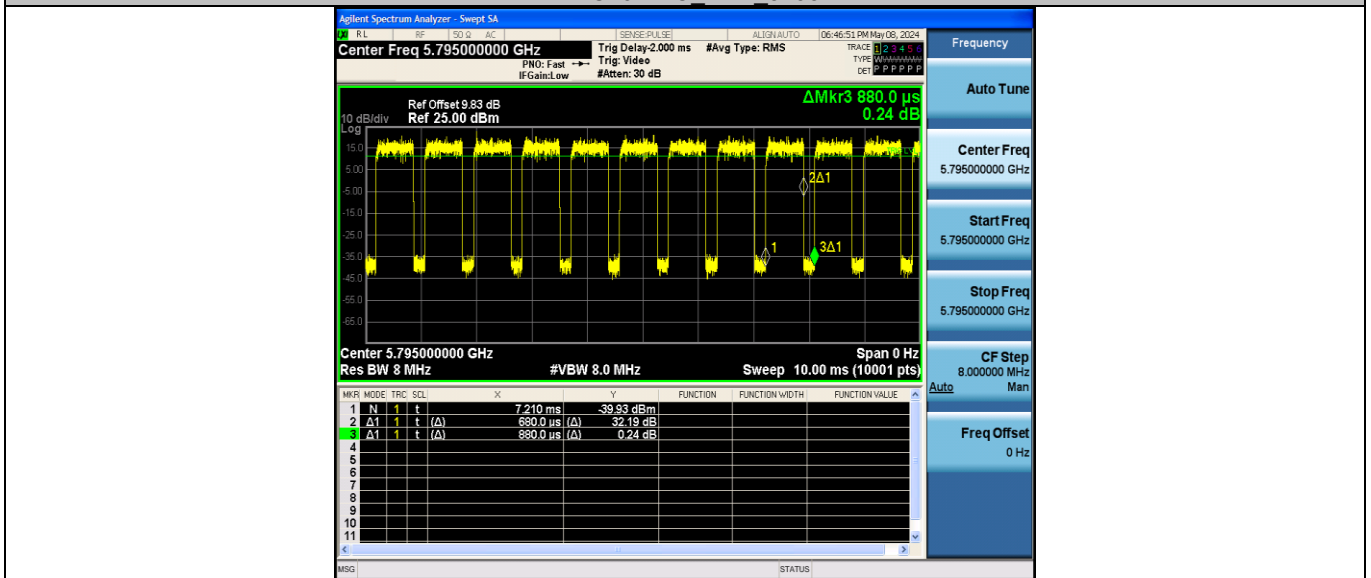
11AC40SISO Ant1 5230



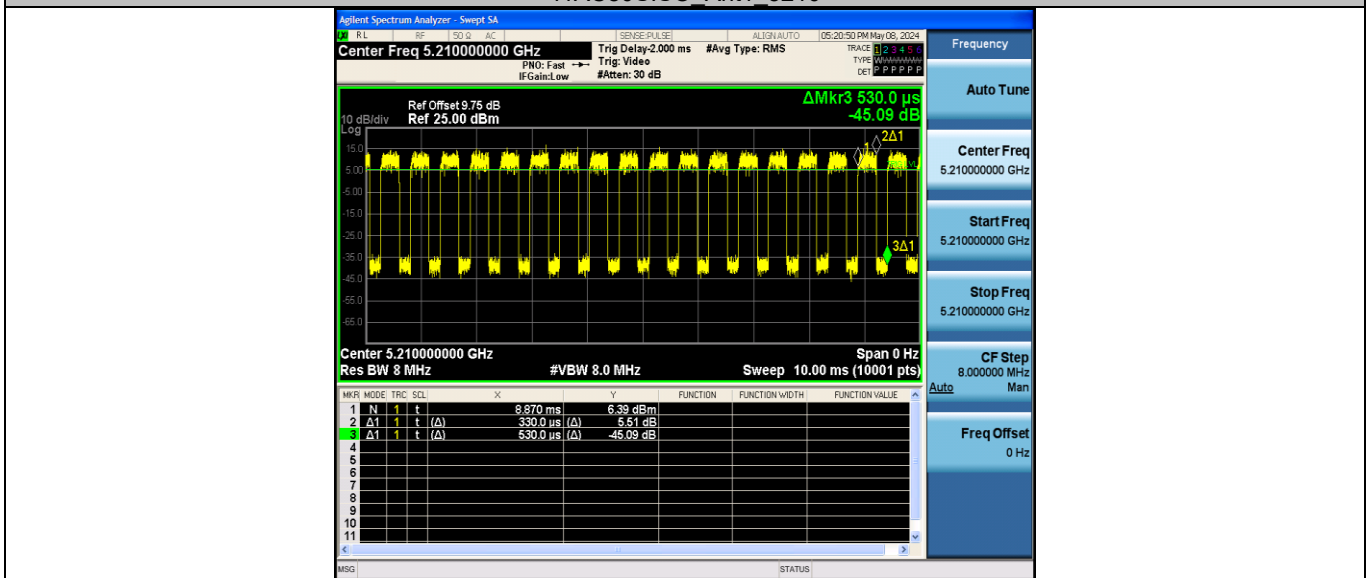
11AC40SISO Ant1 5755



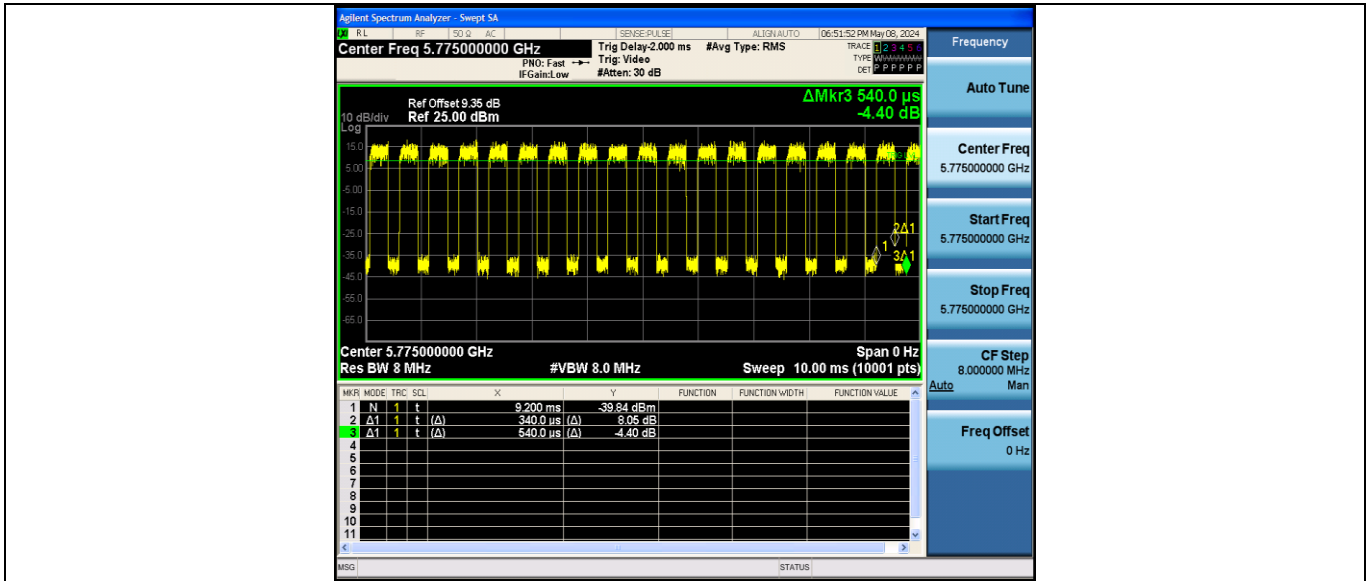
11AC40SISO Ant1 5795



11AC80SISO Ant1 5210



11AC80SISO Ant1 5775



Appendix C: Maximum conducted output power

Test Result

U-NII-1:

Test Mode	Antenna	Frequency[MHz]	Channel Power [dBm]	Duty Cycle [%]	DC Factor [dBm]	Result [dBm]	Limit [dBm]	Gain [dBi]	EIRP [dBm]	Verdict
11A	Ant1	5180	11.85	87.80	0.57	12.42	≤23.42	6.28	18.70	PASS
		5200	12.77	87.27	0.59	13.36	≤23.42	6.28	19.64	PASS
		5240	13.26	87.20	0.59	13.85	≤23.42	6.28	20.13	PASS
11N20SISO	Ant1	5180	11.68	86.45	0.63	12.31	≤23.42	6.28	18.59	PASS
		5200	12.35	86.54	0.63	12.98	≤23.42	6.28	19.26	PASS
		5240	13.14	87.10	0.60	13.74	≤23.42	6.28	20.02	PASS
11N40SISO	Ant1	5190	11.72	75.86	1.20	12.92	≤23.42	6.28	19.20	PASS
		5230	12.88	77.01	1.13	14.01	≤23.42	6.28	20.29	PASS
11AC20SISO	Ant1	5180	11.58	87.18	0.60	12.18	≤23.42	6.28	18.46	PASS
		5200	12.49	87.18	0.60	13.09	≤23.42	6.28	19.37	PASS
		5240	13.28	86.62	0.62	13.90	≤23.42	6.28	20.18	PASS
11AC40SISO	Ant1	5190	11.87	77.27	1.12	12.99	≤23.42	6.28	19.27	PASS
		5230	13.10	77.27	1.12	14.22	≤23.42	6.28	20.50	PASS
11AC80SISO	Ant1	5210	12.61	62.26	2.06	14.67	≤23.42	6.28	20.95	PASS

U-NII-3:

Test Mode	Antenna	Frequency[MHz]	Channel Power [dBm]	Duty Cycle [%]	DC Factor [dBm]	Result [dBm]	Limit [dBm]	Gain [dBi]	EIRP [dBm]	Verdict
11A	Ant1	5745	17.14	87.80	0.57	17.71	≤30.00	5.76	23.47	PASS
		5785	16.32	87.80	0.57	16.89	≤30.00	5.76	22.65	PASS
		5825	16.64	87.27	0.59	17.23	≤30.00	5.76	22.99	PASS
11N20SISO	Ant1	5745	16.87	87.10	0.60	17.47	≤30.00	5.76	23.23	PASS
		5785	16.26	86.54	0.63	16.89	≤30.00	5.76	22.65	PASS
		5825	16.53	87.10	0.60	17.13	≤30.00	5.76	22.89	PASS
11N40SISO	Ant1	5755	16.51	75.86	1.20	17.71	≤30.00	5.76	23.47	PASS
		5795	16.34	77.01	1.13	17.47	≤30.00	5.76	23.23	PASS
11AC20SISO	Ant1	5745	16.96	87.18	0.60	17.56	≤30.00	5.76	23.32	PASS
		5785	16.19	87.18	0.60	16.79	≤30.00	5.76	22.55	PASS
		5825	16.53	86.54	0.63	17.16	≤30.00	5.76	22.92	PASS
11AC40SISO	Ant1	5755	16.54	76.14	1.18	17.72	≤30.00	5.76	23.48	PASS
		5795	16.20	77.27	1.12	17.32	≤30.00	5.76	23.08	PASS
11AC80SISO	Ant1	5775	15.94	62.96	2.01	17.95	≤30.00	5.76	23.71	PASS

Appendix D: Maximum power spectral density

Test Result

B1:

TestMode	Antenna	Frequency[MHz]	Result [dBm/MHz]	Limit[dBm/MHz]	Verdict
11A	Ant1	5180	1.65	≤10.72	PASS
		5200	2.52	≤10.72	PASS
		5240	3.14	≤10.72	PASS
11N20SISO	Ant1	5180	1.65	≤10.72	PASS
		5200	2.21	≤10.72	PASS
		5240	2.98	≤10.72	PASS
11N40SISO	Ant1	5190	-0.47	≤10.72	PASS
		5230	0.05	≤10.72	PASS
11AC20SISO	Ant1	5180	0.91	≤10.72	PASS
		5200	2.34	≤10.72	PASS
		5240	2.90	≤10.72	PASS
11AC40SISO	Ant1	5190	-0.78	≤10.72	PASS
		5230	0.21	≤10.72	PASS
11AC80SISO	Ant1	5210	-1.49	≤10.72	PASS

B4:

TestMode	Antenna	Frequency[MHz]	300kHz Result [dBm/MHz]	RBW Factor	500kHz Result [dBm/MHz]	Limit[dBm/MHz]	Verdict
11A	Ant1	5745	3.86	2.22	6.08	≤30.00	PASS
		5785	3.10	2.22	5.32	≤30.00	PASS
		5825	3.57	2.22	5.79	≤30.00	PASS
11N20SISO	Ant1	5745	3.85	2.22	6.07	≤30.00	PASS
		5785	3.08	2.22	5.3	≤30.00	PASS
		5825	3.09	2.22	5.31	≤30.00	PASS
11N40SISO	Ant1	5755	0.63	2.22	2.85	≤30.00	PASS
		5795	0.27	2.22	2.49	≤30.00	PASS
11AC20SISO	Ant1	5745	3.32	2.22	5.54	≤30.00	PASS
		5785	2.94	2.22	5.16	≤30.00	PASS
		5825	3.47	2.22	5.69	≤30.00	PASS
11AC40SISO	Ant1	5755	0.65	2.22	2.87	≤30.00	PASS
		5795	0.13	2.22	2.35	≤30.00	PASS
11AC80SISO	Ant1	5775	-2.40	2.22	-0.18	≤30.00	PASS

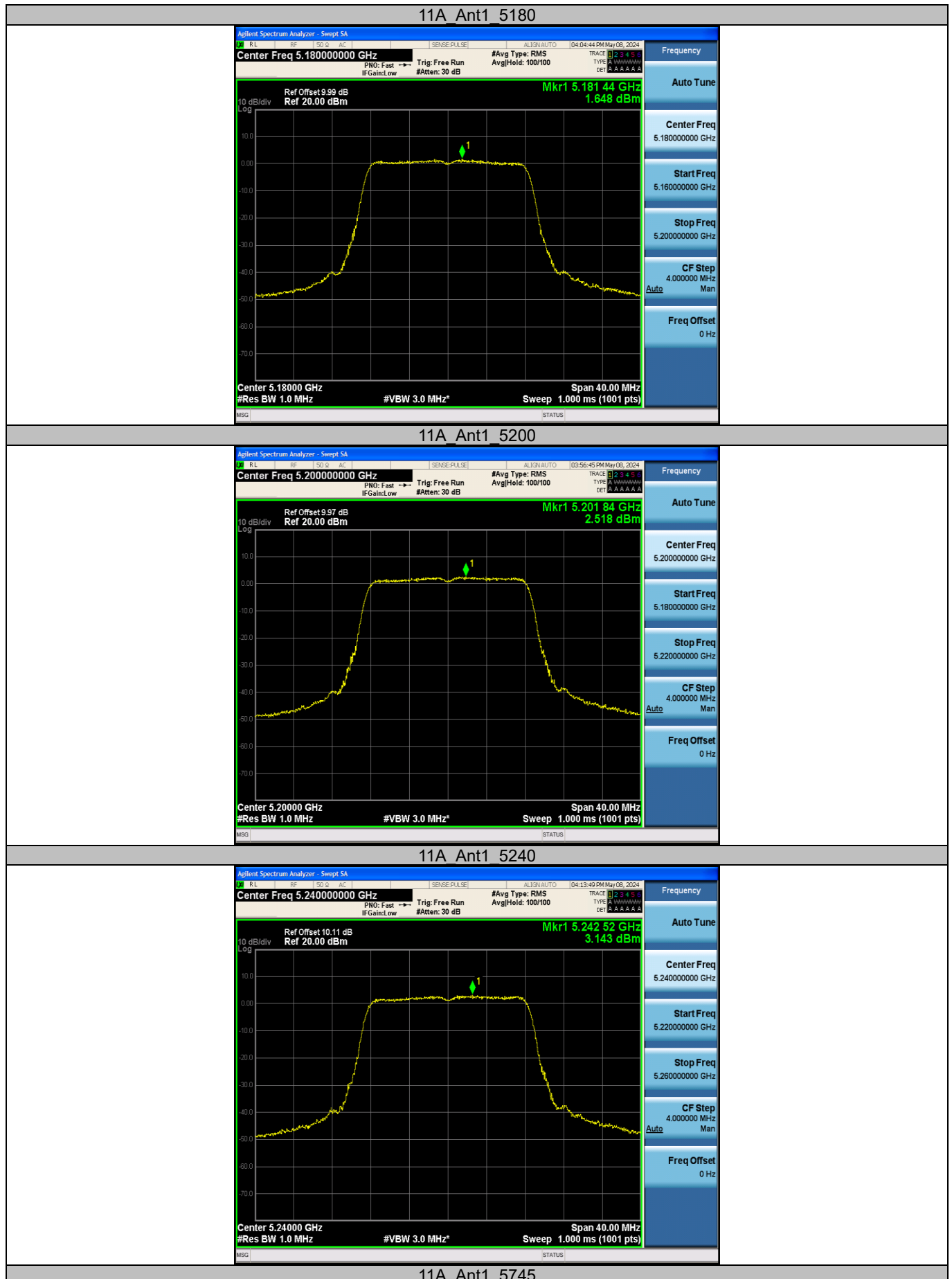
Note:

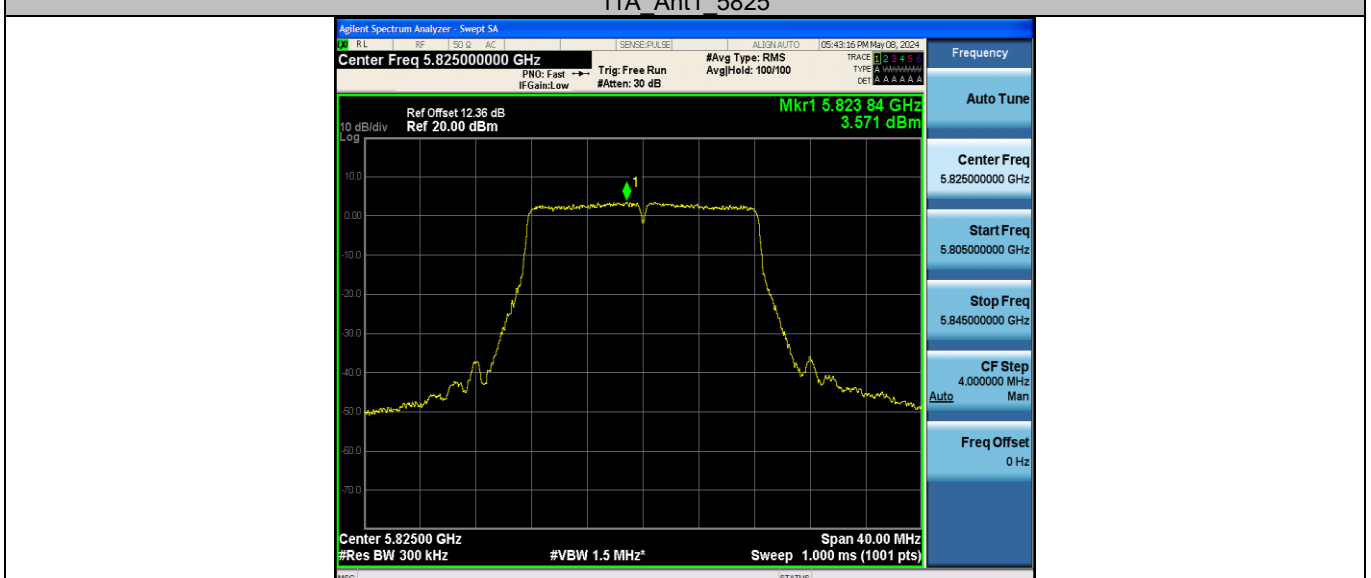
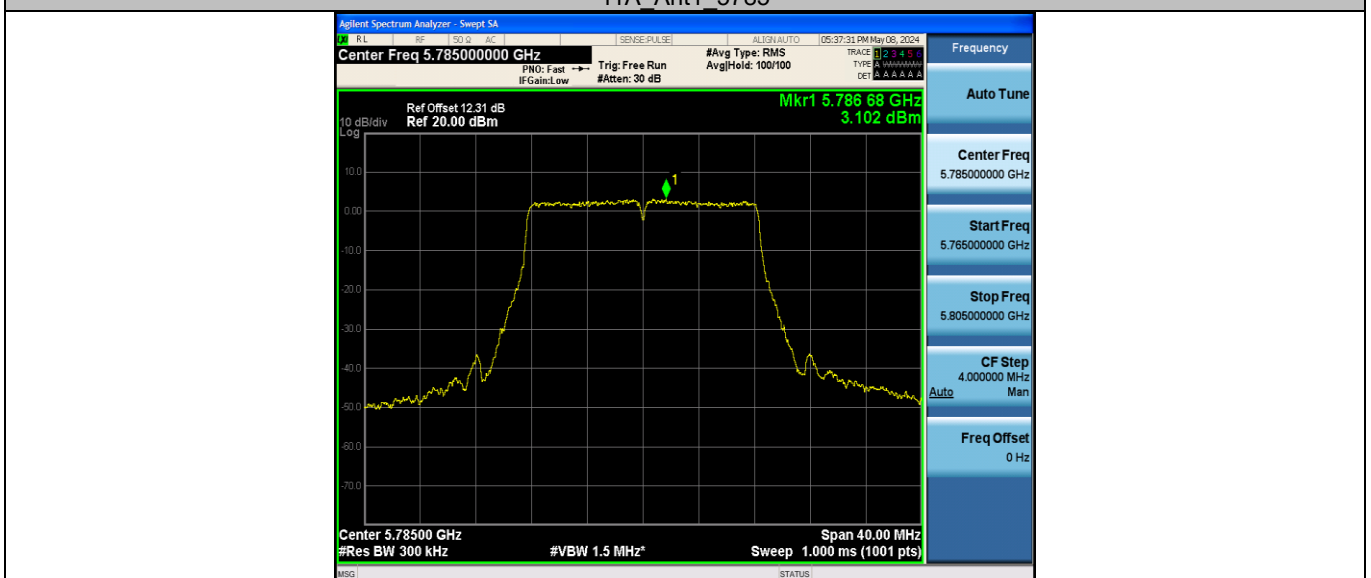
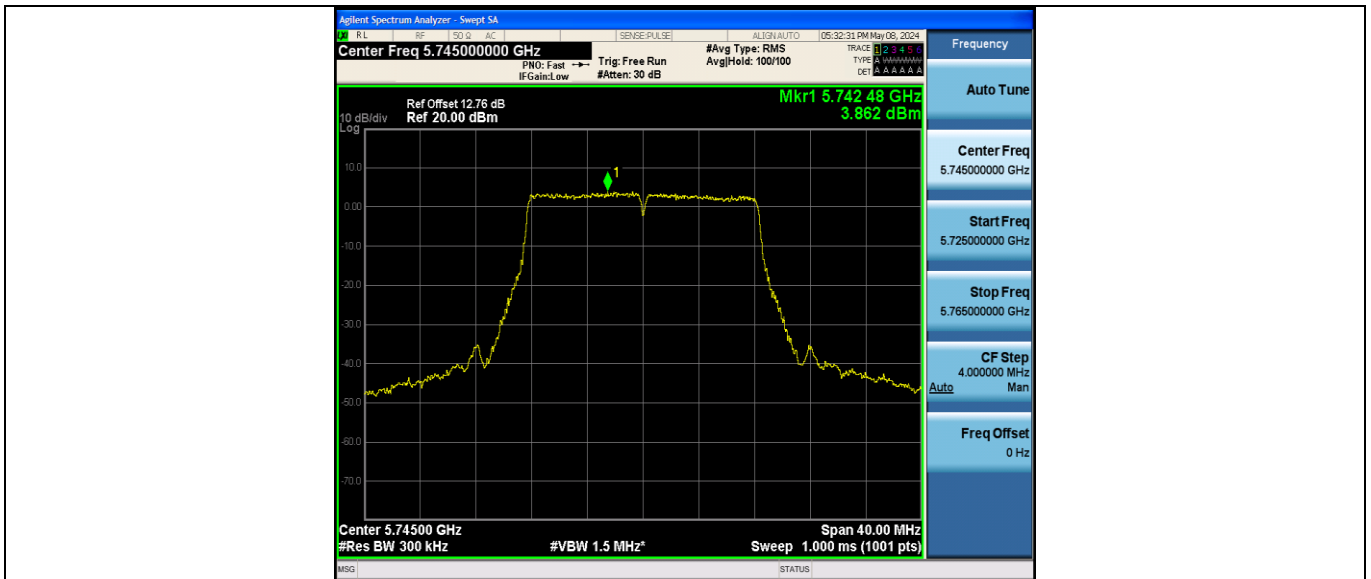
1. The Result and Limit Unit is dBm/500 kHz in the band 5.725–5.85 GHz.

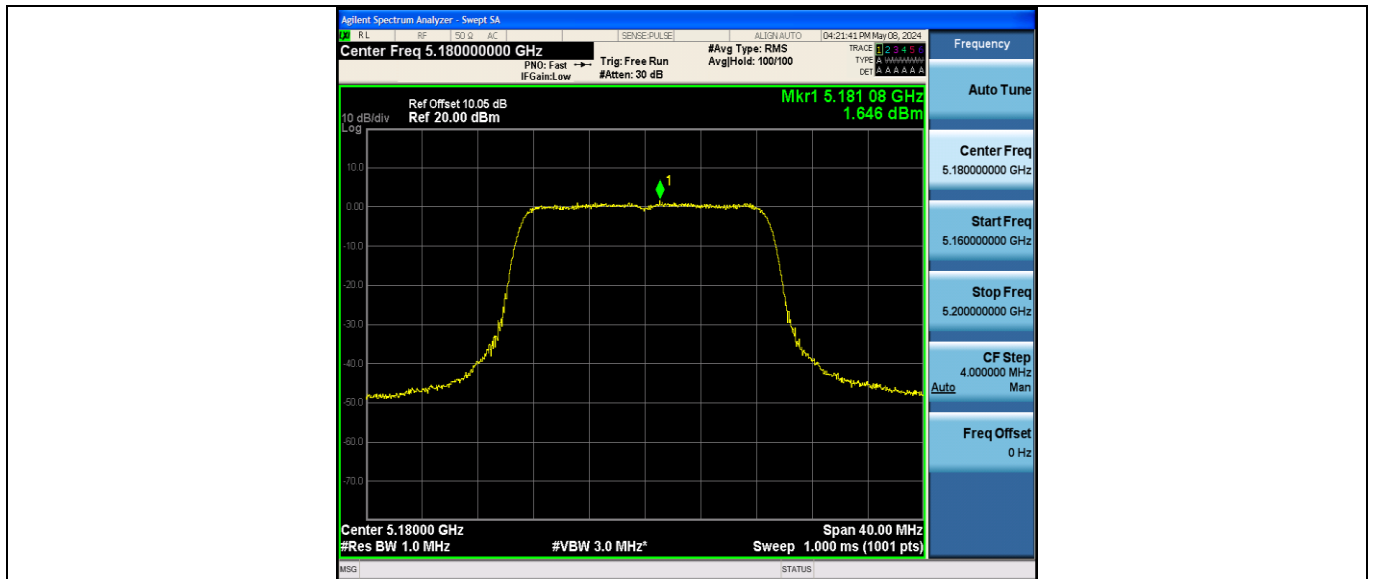
2. RBW Factor = $10 \cdot \log(500/300) = 2.22$

500kHz Result [dBm/MHz] = 300kHz Result [dBm/MHz] + RBW Factor.

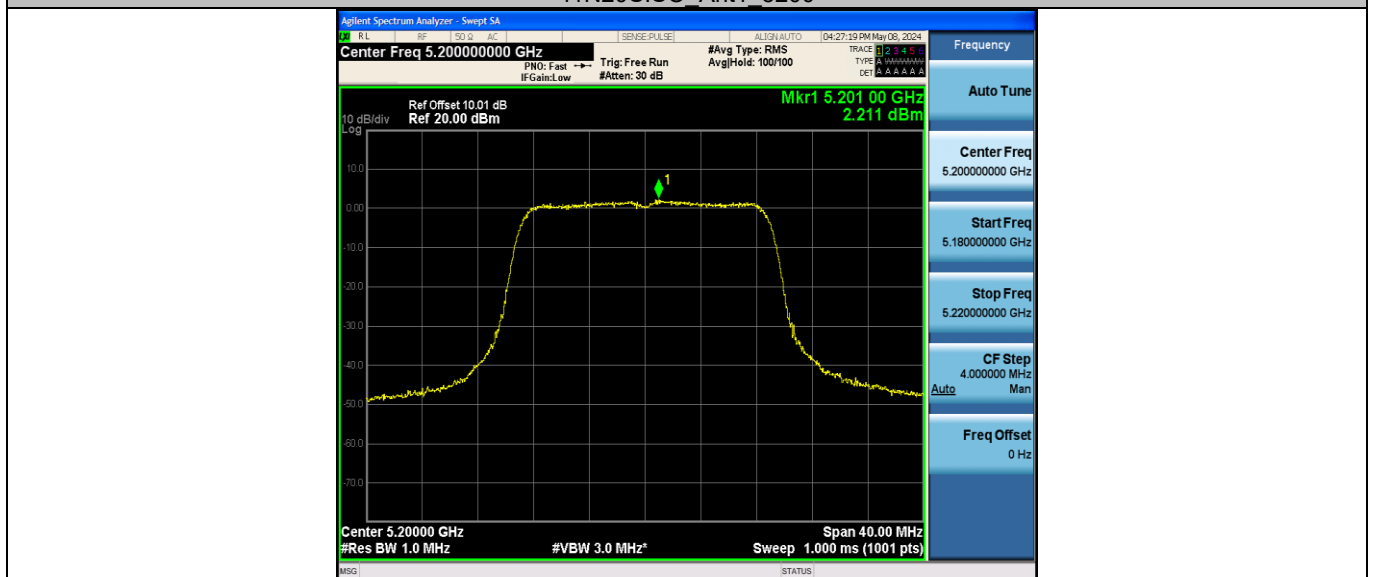
3. The Duty Cycle Factor and RBW Factor is compensated in the graph.

Test Graphs


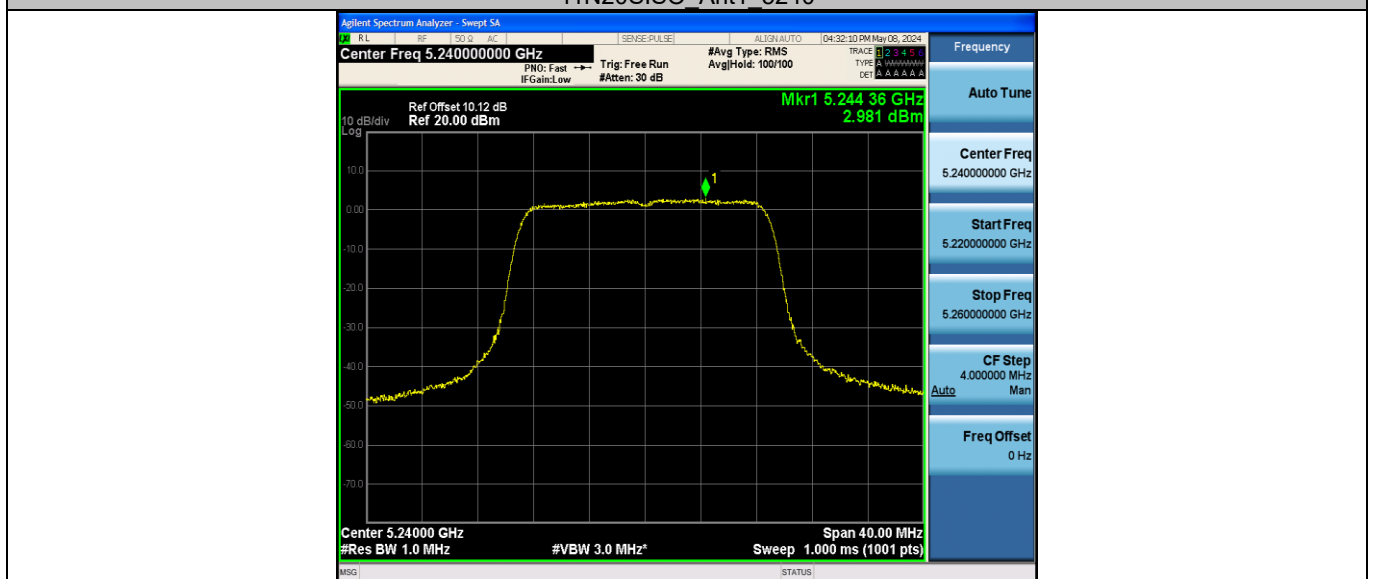




11N20SISO_Ant1_5200



11N20SISO_Ant1_5240



11N20SISO_Ant1_5745

