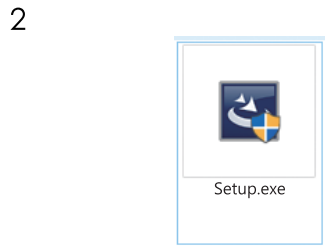


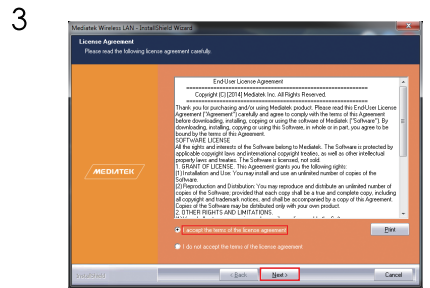
Please be aware this quick-start guide is not intended to be a substitute for the User Manual. To become familiar with all the operating procedures and technical information, be sure to read all information shown during the installation process.

1 <https://info.alfa.com.tw/tube-uac2>

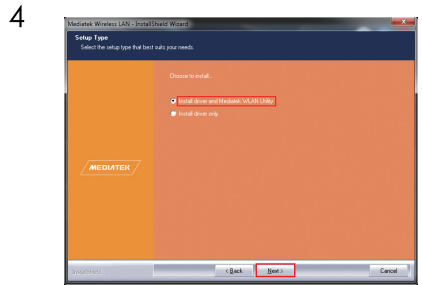
Please go to <https://info.alfa.com.tw/tube-uac2> to download the latest driver.



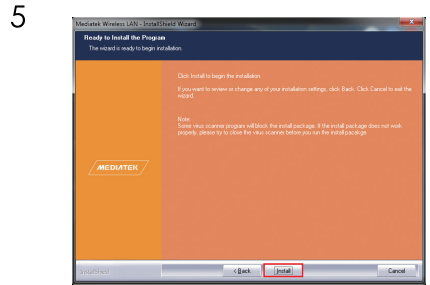
After downloading double-click to install and follow the instructions.



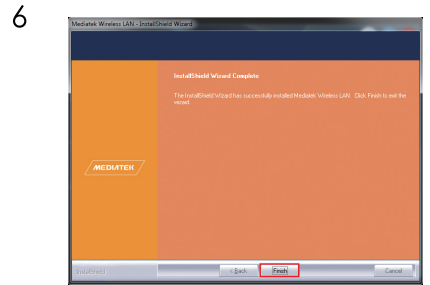
Read the license agreement, choose **“I accept the terms of the license agreement”** and click **“Next”**.



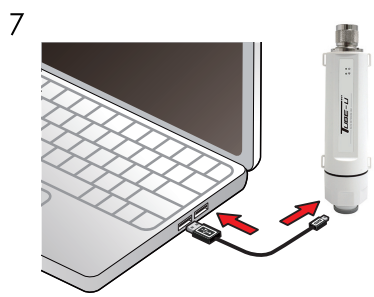
Choose **“Install driver and Mediatek WLAN Utility”** and click **“Next”**.



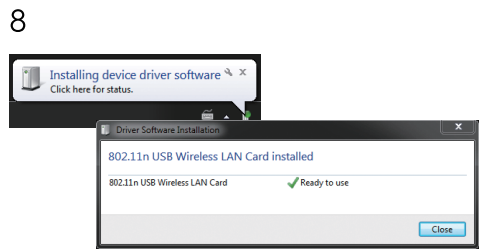
Click **“Install”** to continue.



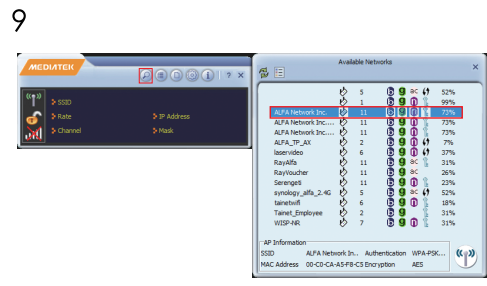
Click **“Finish”**.



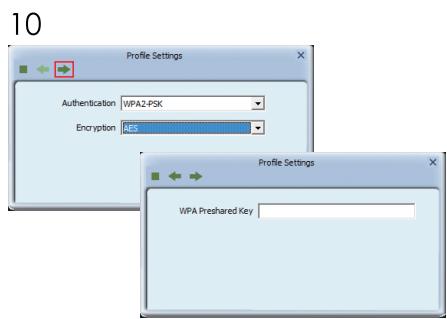
Plug the Tube-UAC2 into your PC/ laptop.



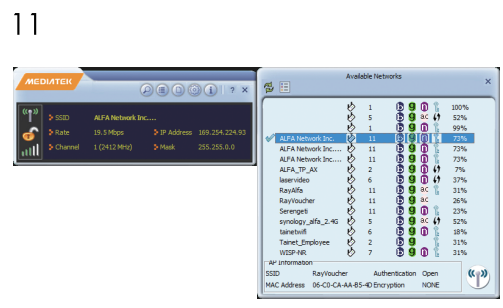
Found New Hardware pops up from the utility bar.



Select your target network and double-click it.



Click **“Next”** then enter the network security key.



You should see a **✓** symbol in front of the name of the network; It means you have successfully connected to your wireless network.

For more information, including macOS, Linux support, go to the URL below or scan the code:



<https://info.alfa.com.tw/tube-uac2>

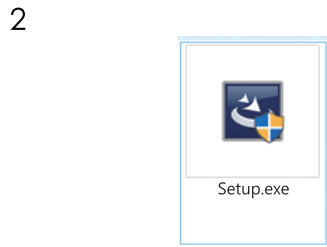


This product is suitable for use in all EU countries.
© ALFA Network Inc.

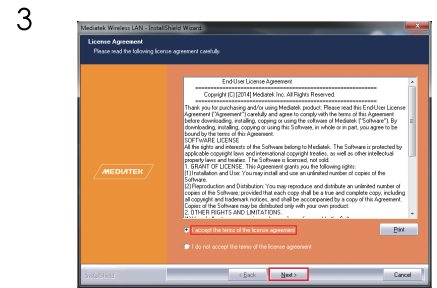
Por favor, tenga en cuenta que esta guía de instalación rápida no es un sustituto del Manual de Usuario. Para familiarizarse con todos los procedimientos e información técnica, asegúrese de leer toda la información mostrada durante el proceso de instalación

1 <https://info.alfa.com.tw/tube-uac2>

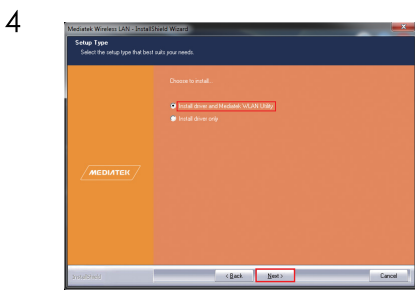
Por favor, vaya a <https://info.alfa.com.tw/tube-uac2> para descargar el programa más reciente.



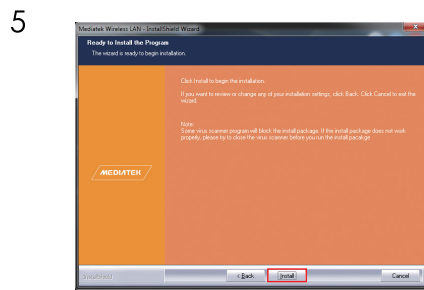
Después de descargarlo, haga doble clic para instalar y siga las instrucciones.



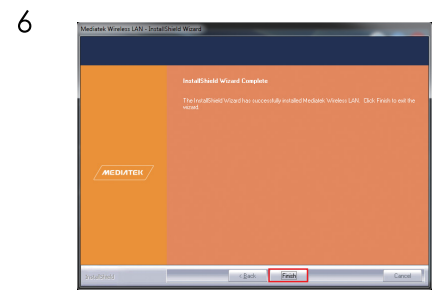
Leer el acuerdo de licencia, elija la opción "I accept the terms of the license agreement" (Acepto los términos del acuerdo de licencia) y seleccione "Next".



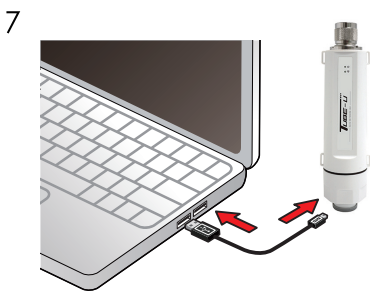
Seleccione "Install driver and Mediatek WLAN Utility" (Instalar el driver y la utilidad WLAN de Mediatek) seleccione "Next".



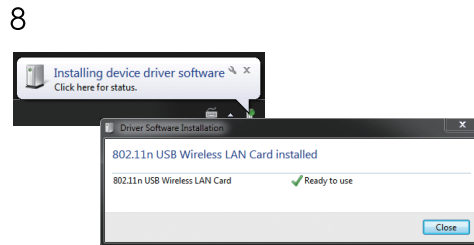
Seleccione "Install" para continuar.



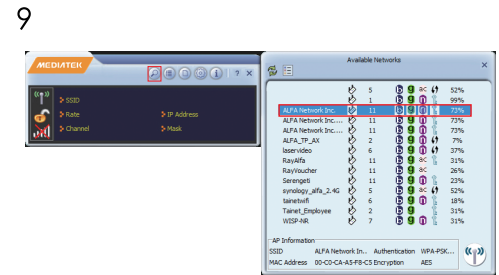
Seleccione "Finish".



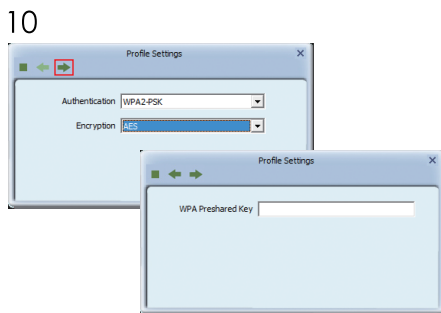
Conecte el Tube-UAC2 a su PC/ Computadora Portátil.



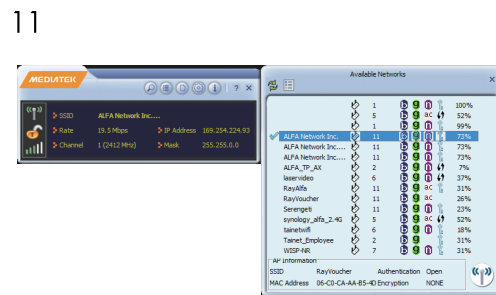
En la barra de estado encuentre "Found New Hardware".



Seleccione la red que desea conectarse y haga dos clic para conectarse.



Seleccione "Next", y escribir el código de seguridad de la red.



Observara un pequeño ✓ símbolo en frente del nombre de la red, esto significa que está conectado exitosamente a la red inalámbrica.

Para obtener más información, sobre la compatibilidad con macOS, Linux, vaya a la siguiente URL o escanear el código:



<https://info.alfa.com.tw/tube-uac2>



Este producto es adecuado para todos los países de la EU. ALFA Network Inc. © protegido por derechos del autor

Federal Communications Commission (FCC) Statement

You are cautioned that changes or modifications not expressly approved by the part responsible for compliance could void the user's authority to operate the equipment.

For a Class A digital device or peripheral, the instructions furnished the user shall include the following or similar statement, placed in a prominent location in the text of the manual:

NOTE: This equipment has been tested and found to comply with the limits for a Class A digital device, pursuant to Part 15 of the FCC Rules. These limits are designed to provide reasonable protection against harmful interference when the equipment is operated in a commercial environment. This equipment generates, uses, and can radiate radio frequency energy and, if not installed and used in accordance with the instruction manual, may cause harmful interference to radio communications. Operation of this equipment in a residential area is likely to cause harmful interference in which case the user will be required to correct the interference at his own expense.

This device complies with Part 15 of the FCC Rules. Operation is subject to the following two conditions:

- 1) this device may not cause harmful interference, and
- 2) this device must accept any interference received, including interference that may cause undesired operation of the device.

FCC RF Radiation Exposure Statement:

1. This Transmitter must not be co-located or operating in conjunction with any other antenna or transmitter.
2. This equipment complies with FCC RF radiation exposure limits set forth for an uncontrolled environment. This equipment should be installed and operated with a minimum distance of 20 centimeters between the radiator and your body.