



AIP-W511 ultra compact wireless adapter Quick Installation Guide

Package Content

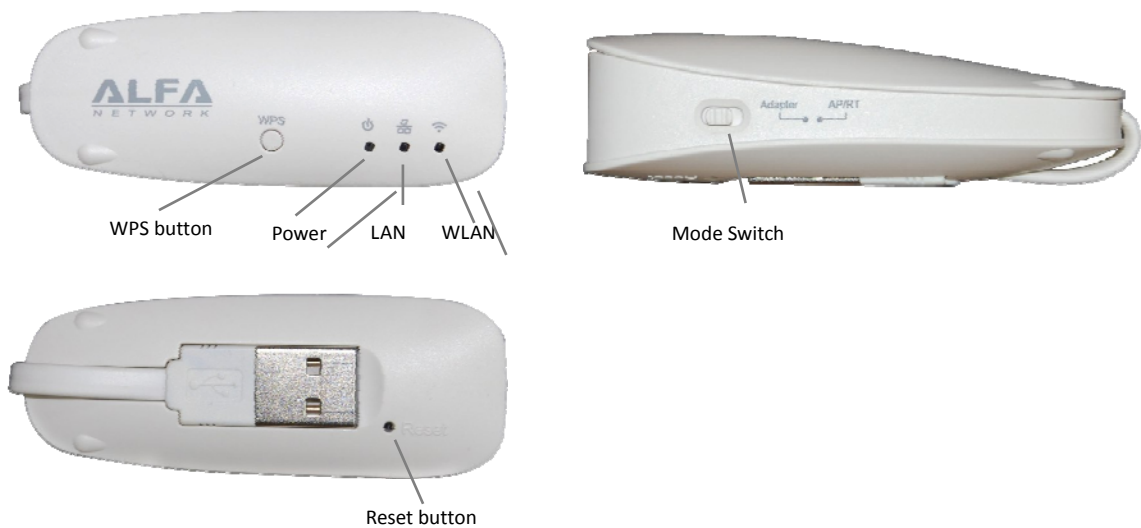
Thank you for choosing ALFA ultra compact wireless adapter. Before installing the adapter, please verify contents inside the product box.

- AIP-W511 ultra compact wireless adapter
- Quick Installation Guide

NOTE:

If any item in this package is missing or damaged, please contact the distributor immediately.

Product Outlook



Installation

- Default operation mode is USB wireless adapter
- Insert the ultra compact wireless adapter into the USB port of PC or your laptop computer.
- Click “**Setup.exe**” when window’s auto-play menu is prompted.



Click **Yes** or **Allow** when windows **User Account Control** window pop-up.



Please wait till driver of ultra compact wireless adapter is installed on your computer. Open your web browser, and insert <http://alfasetup.com> in the address bar.

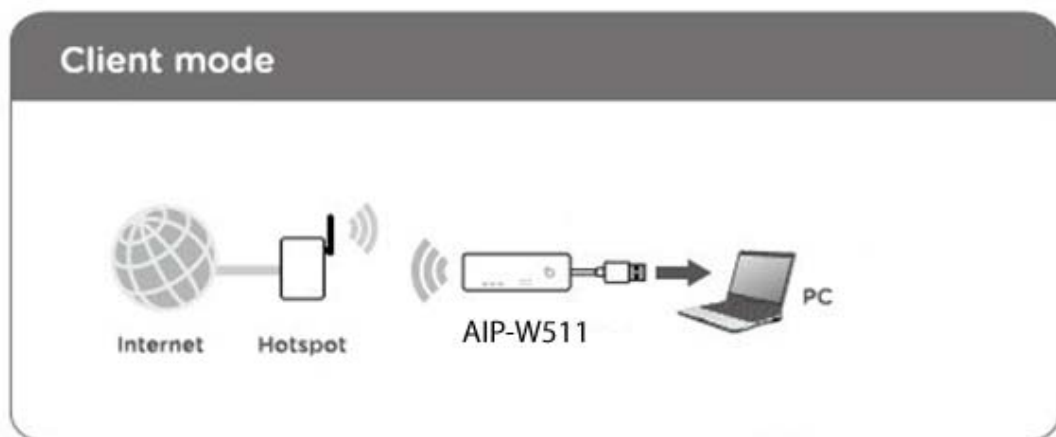
NOTE: in this mode, Windows and MAC OS X (10.6 or later) drivers are supported.

- **Understand Product Operation Modes, and make selection**

Default operation mode of ultra compact wireless adapter is wireless adapter.

- **Wireless adapter mode**

In this mode, ultra compact wireless adapter performs as a 802.11n wireless adapter for WLAN access. Just connect ultra compact wireless adapter to your laptop or desktop PC, WLAN access is ready to use.

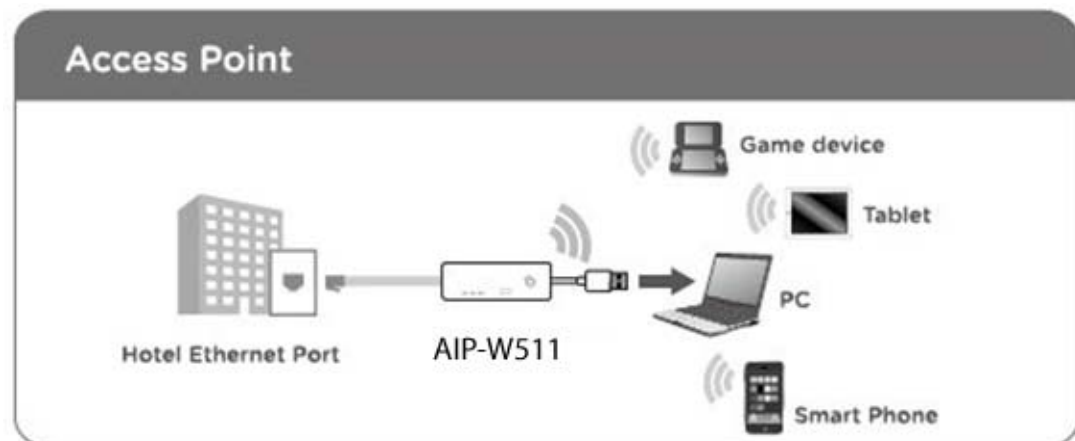
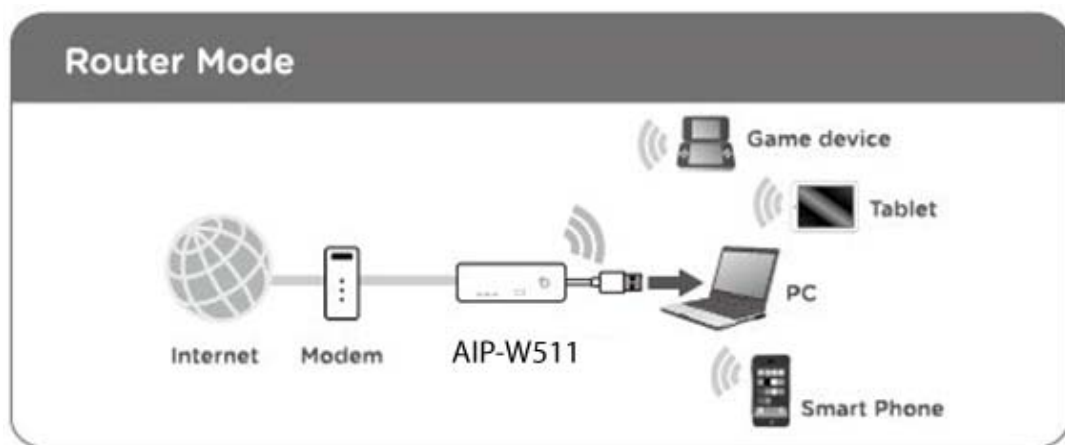


NOTE: in this mode, Windows and MAC OS X (or later) drivers are supported.

- **Hotel AP / Router Mode**

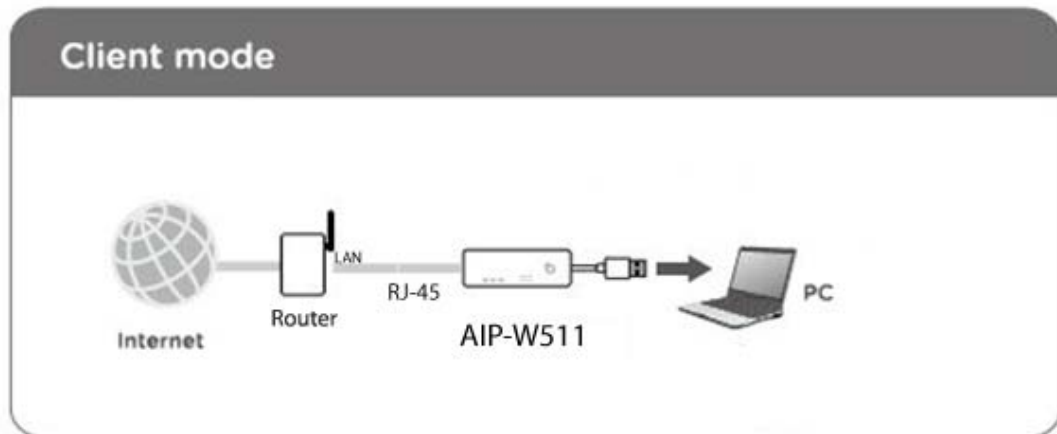
ONLY DSL modem/cable existed in your network, ultra compact wireless adapter is very convenient to convert Ethernet to wireless signals. It acts as a wireless AP/router for WLAN access, and Internet sharing. Just connect Ultra compact wireless adapter to DSL modem via Ethernet/RJ-45 cable, it will do the tasks for you.

NOTE: in this mode, ultra compact wireless adapter can be powered by PC/laptop or mobile power bank.



- **Ethernet adapter mode**

In this mode, easily connect your laptop or computer to an Ethernet network with the ultra compact wireless adapter. Stylish and compact, it connects to the USB 2.0 port of your laptop or computer and provides an RJ-45 connector that supports 10/100BASE-T network access.



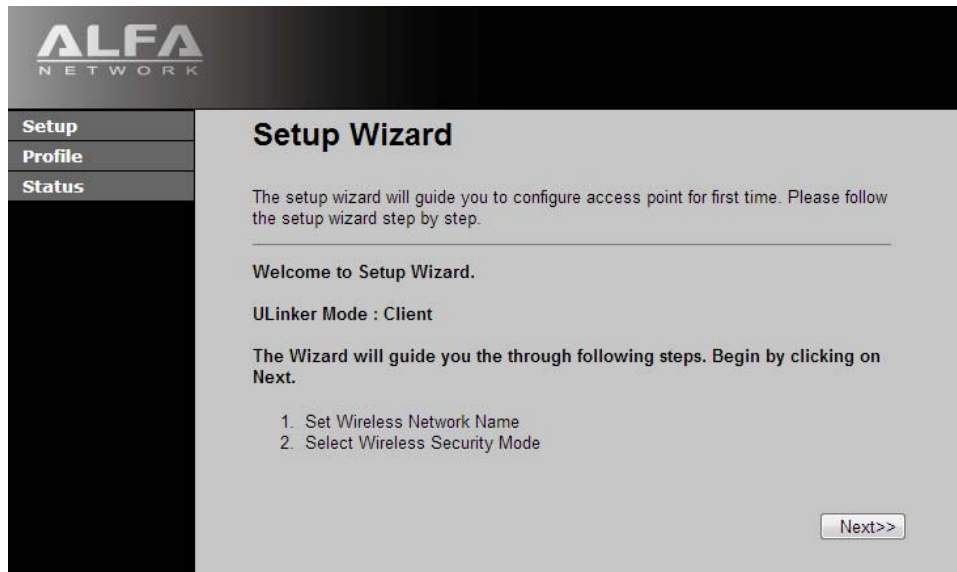
- **Product Configurations**

In default mode, ultra compact wireless adapter is WLAN client.

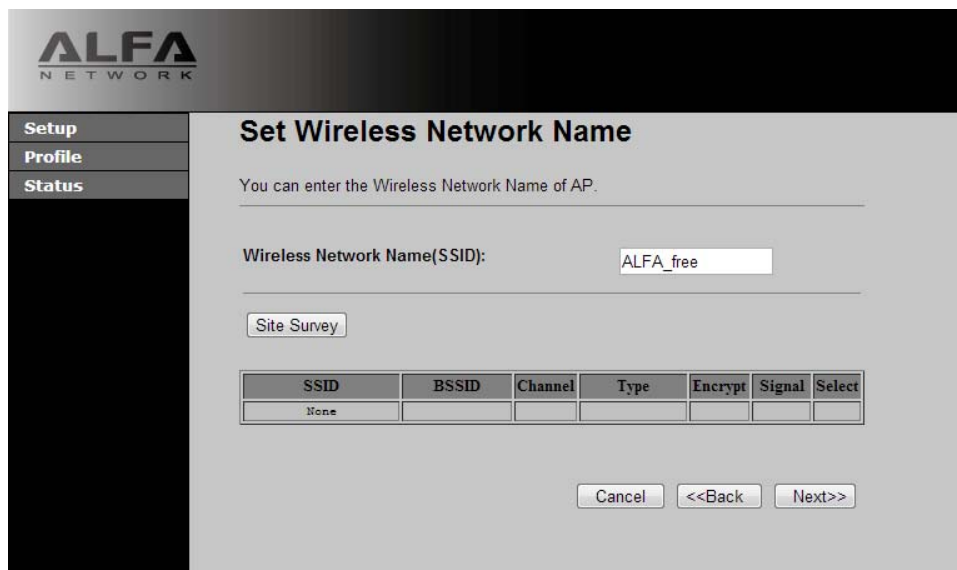
To start the product configurations, connect USB cable to ultra compact wireless adapter..

Open web browser, and enter <http://alfasetup.com>, product setting page will appear as below:

WLAN client mode:



Click on **Next**, insert SSID of wireless AP manually or perform a Site Survey to scan the available wireless AP nearby.



ALFA NETWORK

Setup
Profile
Status

Set Wireless Network Name

You can enter the Wireless Network Name of AP.

Wireless Network Name(SSID):

SSID	BSSID	Channel	Type	Encrypt	Signal	Select
ALFA_free	00:c0:ca:65:aa:02	4 (B+G+N)	AP	WPA2-PSK		<input type="radio"/>
Laservideo TP-LINK	b0:48:7a:b5:01:c4	9 (B+G+N)	AP	WPA-PSK/WPA2-PSK		<input type="radio"/>
DrayTek	00:1d:aa:29:85:98	6 (B+G+N)	AP	WPA-PSK		<input type="radio"/>
AndroidAP	90:18:7c:54:e8:9b	1 (B+G+N)	AP	WPA2-PSK		<input type="radio"/>
Tainet_Employee	00:17:c5:06:e5:99	5 (B+G)	AP	WPA-PSK		<input type="radio"/>
Tainet_Guest	00:17:c5:06:e5:9b	5 (B+G)	AP	no		<input type="radio"/>
3Com	00:0f:cb:9a:68:ba	11 (B+G)	AP	WEP		<input type="radio"/>

Click on **Next** to select, and insert suitable wireless security to connect to target wireless AP.

ALFA NETWORK

Setup
Profile
Status

Select Wireless Security Mode

This page allows you setup the wireless security. Turn on WEP or WPA by using Encryption Keys could prevent any unauthorized access to your wireless network.

Encryption:

Pre-Shared Key Format:

Pre-Shared Key:

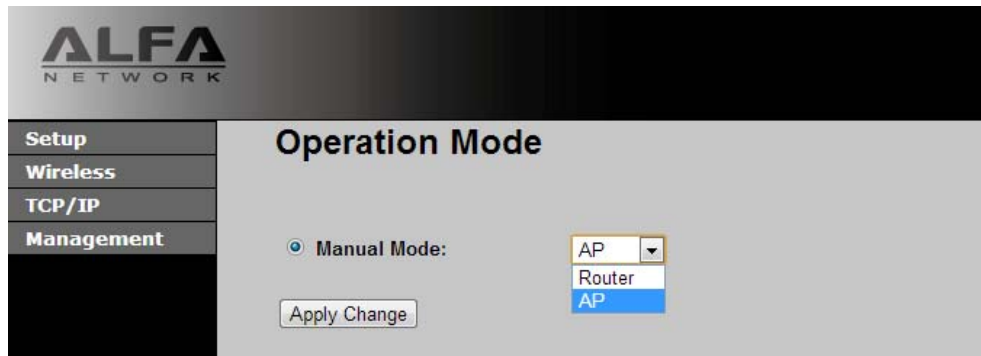
Add to Wireless Profile

Click on **Finished**, the ultra compact wireless adapter shall now connect to wireless AP, and you may start Internet browsing.

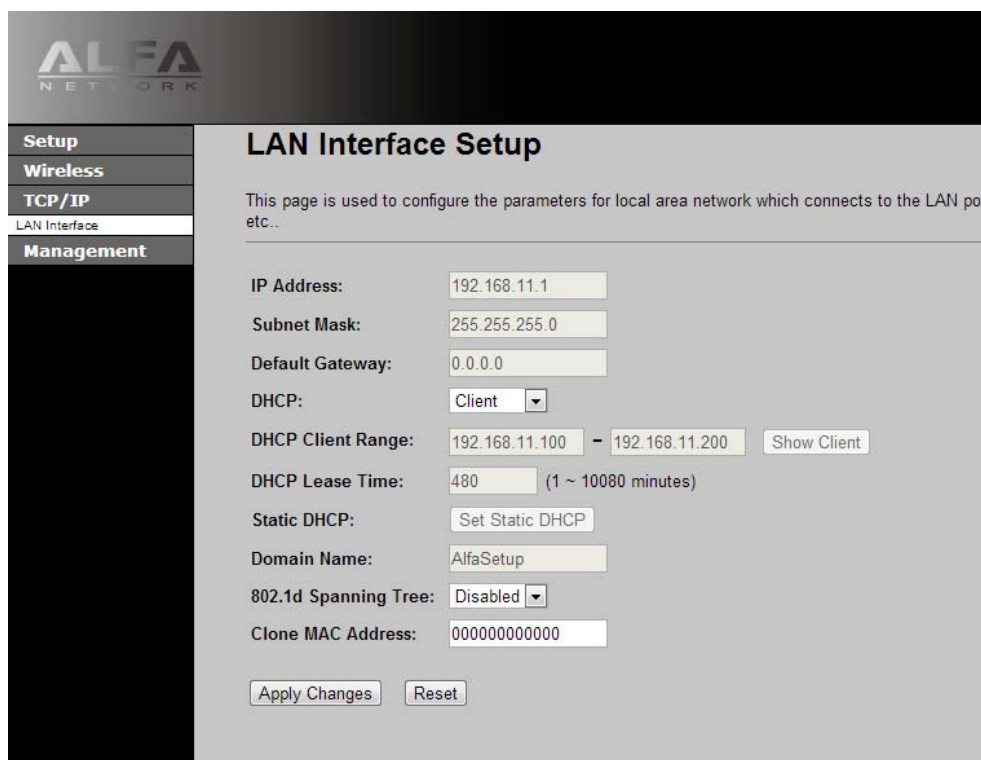
- **WLAN AP** (Access Point) mode:

Open web browser, and enter <http://alfasetup.com>, product setting page will appear as below:

Please select **AP** in mode selection tab.



Click on **TCP/IP** menu, to change or keep LAN IP parameters in wireless AP mode.



Click on **Wireless** --> **Basic Settings** menu, to change or keep LAN IP parameters in wireless AP mode.

ALFA NETWORK

Setup

Wireless

Basic Settings
Advanced Settings
Security
Access Control
Schedule
WPS

TCP/IP

Management

Wireless Basic Settings

This page is used to configure the parameters for wireless LAN clients which may connect to your Access Point parameters.

Disable Wireless LAN Interface

Band: 2.4 GHz (B+G+N)

Mode: AP

Network Type: Infrastructure

SSID: 11n AP

Channel Width: 20MHz

Control Sideband: Upper

Channel Number: 3

Broadcast SSID: Enabled

WMM: Enabled

Data Rate: Auto

Associated Clients:

Enable Mac Clone (Single Ethernet Client)

Enable Universal Repeater Mode (Acting as AP and client simultaneously)

SSID of Extended Interface: 11n AP RPT0

Click on **Wireless** -- > **Security Settings** menu, there is a default security config in this page. To change or keep wireless security parameters, please change the values in this page.

ALFA NETWORK

Setup

Wireless

Basic Settings
Advanced Settings
Security
Access Control
Schedule
WPS

TCP/IP

Management

Change setting successfully!

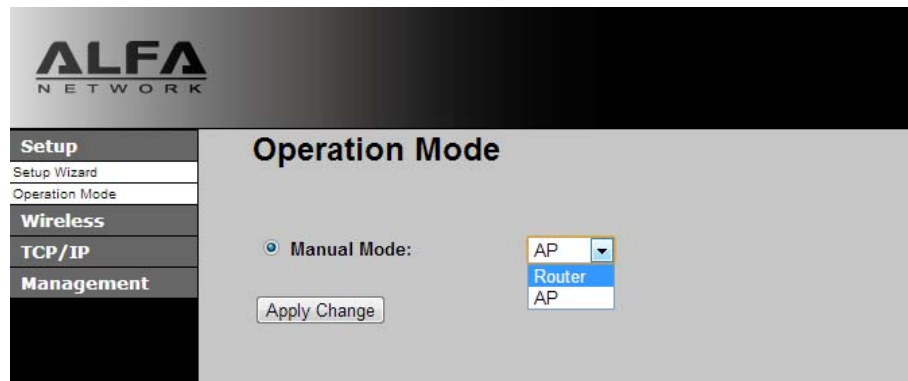
Your changes have been saved. The router must be rebooted for the changes to take effect. You can reboot now, or you can continue to make other changes and reboot later.

NOTE: To apply the changes, please reboot the router to activate the new configurations in the WLAN AP setting menu.

- **WLAN Router mode:**

Open web browser, and enter <http://alfasetup.com>, product setting page will appear as below:

Please select **Router** in mode selection tab.



Click on **Setup Wizard** menu, refer to the screen instructions to fill-in required parameters for Internet access.

NOTE: default IP address in router mode is **192.168.11.1**

FURTHER INFORMATION

The steps above introduce simple installation for ultra compact wireless adapter. For further configuration of the Wi-Fi Protected Setup (WPS), Software AP etc, please refer to the user's manual. Any further questions, please contact the local dealer or distributor where you purchased this product.

FCC ID: 2AB87511

Model No.: AIP-W511

Model name: 802.11n 150M Ultra Wireless LAN Router



This device complies with Part 15 of the FCC Rules. Operation is subject to the following two conditions: (1) this device may not cause harmful interference, and (2) this device must accept any interference received, including interference that may cause undesired operation.

Changes or modifications not expressly approved by the party responsible for compliance could void the user's authority to operate the equipment.

The device has been evaluated to meet general RF exposure requirement. The device can be used in portable exposure condition without restriction.

This device and its antenna(s) must not be co-located or operation in conjunction with any other antenna or transmitter.

Note: This equipment has been tested and found to comply with the limits for a Class B digital device, pursuant to part 15 of the FCC Rules. These limits are designed to provide reasonable protection against harmful interference in a residential installation. This equipment generates, uses and can radiate radio frequency energy and, if not installed and used in accordance with the instructions, may cause harmful interference to radio communications. However, there is no guarantee that interference will not occur in a particular installation. If this equipment does cause harmful interference to radio or television reception, which can be determined by turning the equipment off and on, the user is encouraged to try to correct the interference by one or more of the following measures:

- Reorient or relocate the receiving antenna.
- Increase the separation between the equipment and receiver.
- Connect the equipment into an outlet on a circuit different from that to which the receiver is connected.
- Consult the dealer or an experienced radio/TV technician for help.