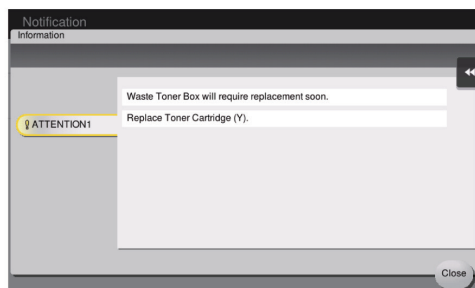


## 4. When a message appears to replace consumables or carry out cleaning

A message appears indicating the time(s) that expiring consumables used in this machine should be replaced. Also, a message appears when the **Slit Scan Glass** is dirty.

Replace consumables or clean the **Slit Scan Glass** as instructed in the displayed message. Contact your service representative if the messages continue to appear even after replacement or cleaning has been carried out.



### 4.1 About Developing Unit

When it is time to replace a **Developing Unit**, a message appears to prompt you to contact your service representative. If the message appears, contact your service representative.

 **Tips**

- The settings by the service representative are required to display a message about **Developing Unit**. By the factory default status, this message is displayed only in some area. For details, contact your service representative.

### 4.2 About Imaging Unit

When it is time to replace an **Imaging Unit**, a message appears to prompt you to contact your service representative. If the message appears, contact your service representative.

 **Tips**

- The settings by the service representative are required to display a message about **Imaging Unit**. By the factory default status, this message is displayed only in some area. For details, contact your service representative.

### 4.3 About Drum Unit

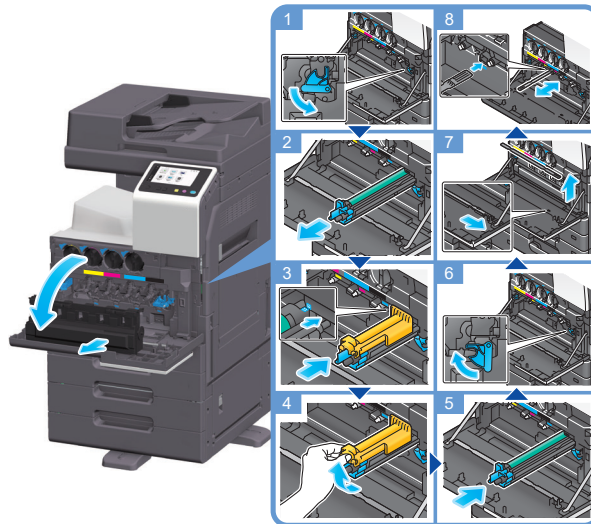
When it is time to replace a **Drum Unit**, a message appears to prompt you to contact your service representative. If the message appears, contact your service representative.

### Tips

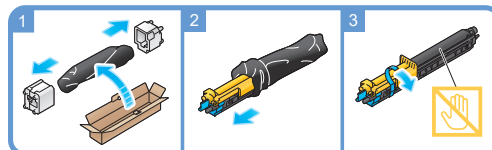
- The settings by the service representative are required to display a message about **Drum Unit**. By the factory default status, this message is displayed only in some area. For details, contact your service representative.

## Replacing a Drum Unit

The **Drum Unit** only for black is targeted for replacement.



### Unpacking the Drum Unit



### Tips

- Your service representative will collect your used **Drum Unit**. Put it in a black plastic bag and store it in a box by itself.
- A **Drum Unit** may be damaged due to exposure to light. Do not take it out of a black plastic bag until just before it is to be installed.
- After replacing a **Drum Unit**, be sure to clean the **Print Head Glass** for each color. For details on how to clean the **Print Head Glass**, refer to page 38.

### Warning

- Do not throw toner or a container that contains toner (e.g., toner cartridge, developing unit and Waste Toner Box) into an open flame. The hot toner may scatter and cause burns or other damage.

**⚠ Caution**

- Do not leave toner-related parts (e.g., toner cartridge, developing unit and Waste Toner Box) within easy reach of children. Licking any of these parts or ingesting toner could damage your health.
- Do not store toner-related parts (e.g., toner cartridge, developing unit and Waste Toner Box) near devices susceptible to magnetism, such as precision equipment and data storage devices, otherwise they may malfunction. They could cause these products to malfunction.
- Do not force open the toner-related parts (e.g., toner cartridge, developing unit and Waste Toner Box). If toner tumbles from the toner bottle, take utmost care to avoid inhaling it or even getting skin contact.
- If toner lands on your skin or clothing, wash thoroughly with soap and water.
- If you inhale toner, move to a place with fresh air and gargle with a lot of water repeatedly. Should you get symptoms such as coughing, seek medical advice.
- If you get toner into your eyes, immediately rinse them with running water for over 15 minutes. Seek medical advice if irritation persists.
- If you swallow toner, rinse out your mouth and drink a few glasses of water. Seek medical advice if necessary.

## 4.4 About Toner Cartridge

### When toner is running out in the Toner Cartridge

When it is almost time to replace a **Toner Cartridge**, an advanced warning message appears. Prepare a Toner Cartridge for replacement based on the maintenance contract.

### When it is time to replace a Toner Cartridge

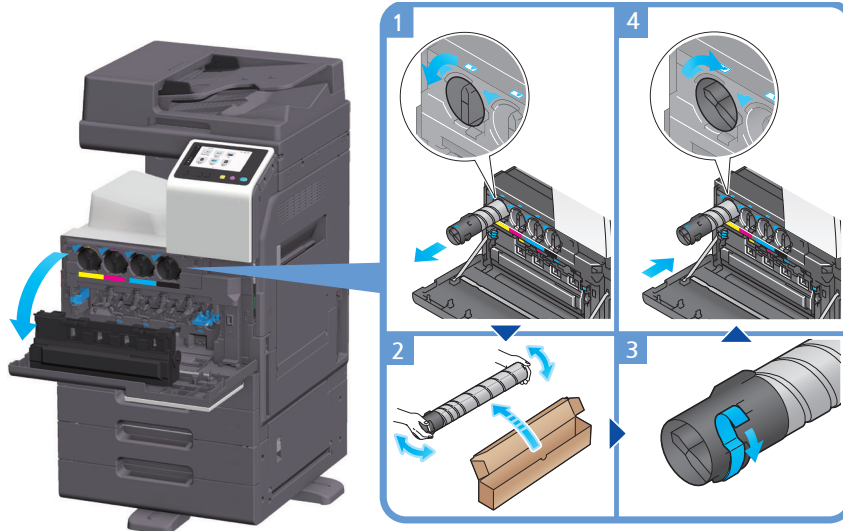
When it is time to replace a **Toner Cartridge**, a replacement prompt message appears. Replace it based on the maintenance contract. You can display the replacement procedure on the screen and check it.

**⚙ Tips**

- Do not replace a Toner Cartridge of a color that is not displayed.

## Replacing a Toner Cartridge

The following example shows how to replace a Yellow Toner Cartridge.



### Tips

- Shake a new Toner Cartridge well, approximately 5 to 10 times, before installing it.
- If a toner cartridge other than for black is empty, printing can be continued forcibly using black. Tap **[Continue]**, and then select a desired print job.
- Do not forcibly open or disassemble a Toner Cartridge (toner container).
- Do not forcibly remove or dispose of toner that remains in a Toner Cartridge (toner container).

### Notice

- Install a Toner Cartridge for each label color. If you try to forcibly install a Toner Cartridge in the incorrect position, it may result in a failure.

### Warning

- **Do not throw toner or a container that contains toner (e.g., toner cartridge, developing unit and Waste Toner Box) into an open flame. The hot toner may scatter and cause burns or other damage.**

**Caution**

- Do not force open the toner-related parts (e.g., toner cartridge, developing unit and Waste Toner Box). If toner tumbles from the toner bottle, take utmost care to avoid inhaling it or even getting skin contact.
- If toner lands on your skin or clothing, wash thoroughly with soap and water.
- If you inhale toner, move to a place with fresh air and gargle with a lot of water repeatedly. Should you get symptoms such as coughing, seek medical advice.
- If you get toner into your eyes, immediately rinse them with running water for over 15 minutes. Seek medical advice if irritation persists
- If you swallow toner, rinse out your mouth and drink a few glasses of water. Seek medical advice if necessary.

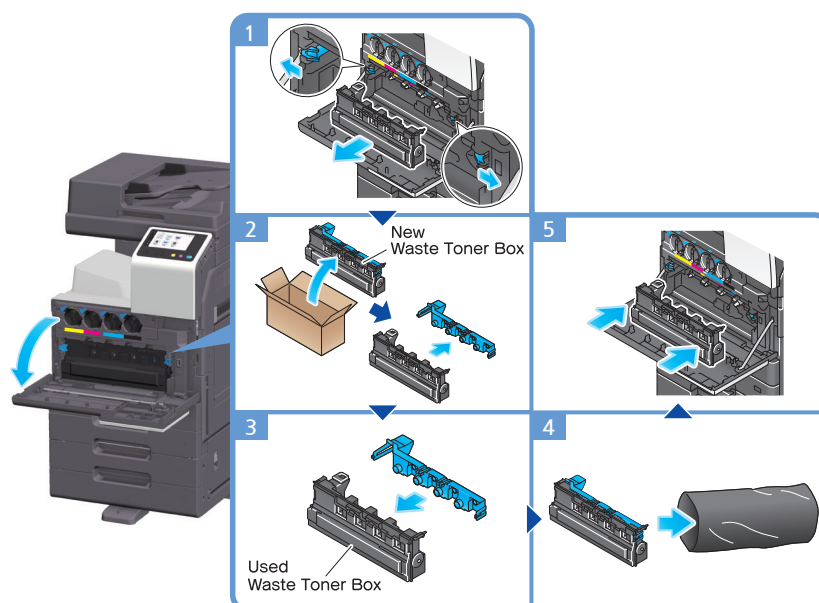
**Caution**

- Do not leave toner-related parts (e.g., toner cartridge, developing unit and Waste Toner Box) within easy reach of children. Licking any of these parts or ingesting toner could damage your health.
- Do not store toner-related parts (e.g., toner cartridge, developing unit and Waste Toner Box) near devices susceptible to magnetism, such as precision equipment and data storage devices, otherwise they may malfunction. They could cause these products to malfunction.

## 4.5 About Waste Toner Box

When the **Waste Toner Box** is full, a message appears to prompt you to replace it (at replacement by user). Follow the displayed guidance to take an action.

### Replacing a Waste Toner Box



 **Tips**

- After removing the Waste Toner Box, quickly install the cap. If the Waste Toner Box is tilted, waste toner may spill.
- Your service representative will collect your used Waste Toner Box. Put it in a plastic bag, and store it in a box by itself.

 **Warning**

- **Do not throw toner or a container that contains toner (e.g., toner cartridge, developing unit and Waste Toner Box) into an open flame. The hot toner may scatter and cause burns or other damage.**

 **Caution**

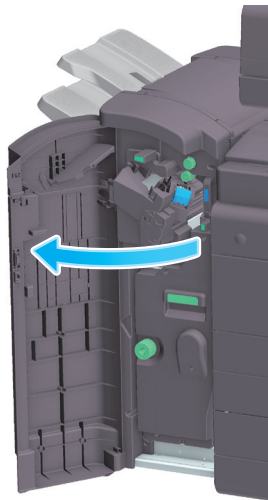
- **Do not leave toner-related parts (e.g., toner cartridge, developing unit and Waste Toner Box) within easy reach of children. Licking any of these parts or ingesting toner could damage your health.**
- **Do not store toner-related parts (e.g., toner cartridge, developing unit and Waste Toner Box) near devices susceptible to magnetism, such as precision equipment and data storage devices, otherwise they may malfunction. They could cause these products to malfunction.**
- **Do not force open the toner-related parts (e.g., toner cartridge, developing unit and Waste Toner Box). If toner tumbles from the toner bottle, take utmost care to avoid inhaling it or even getting skin contact.**
- **If toner lands on your skin or clothing, wash thoroughly with soap and water.**
- **If you inhale toner, move to a place with fresh air and gargle with a lot of water repeatedly. Should you get symptoms such as coughing, seek medical advice.**
- **If you get toner into your eyes, immediately rinse them with running water for over 15 minutes. Seek medical advice if irritation persists.**
- **If you swallow toner, rinse out your mouth and drink a few glasses of water. Seek medical advice if necessary.**

## 4.6 About Staple Cartridge

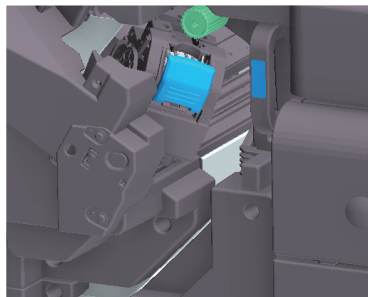
When staples in the **Finisher** have run out, a message appears to prompt you to make replenish them. Take action while referring to the label inside the machine.

### Replacing a Staple Cartridge (for Finisher FS-539 / Finisher FS-539 SD)

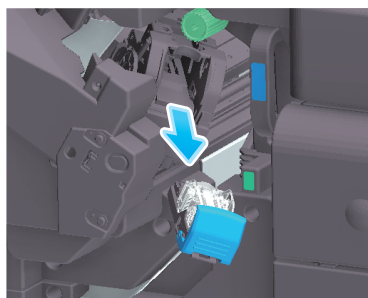
- 1** Open the **Front Door** of the **Finisher**.



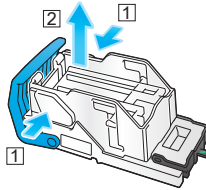
- 2** Unlock the **Staple Cartridge**.



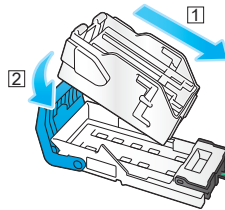
- 3** Pull out the **Staple Cartridge**.



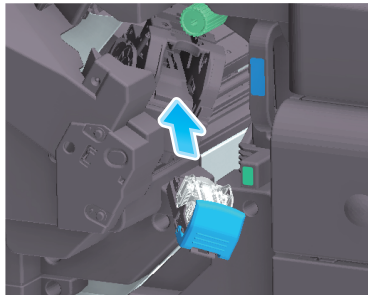
- 4 Remove any empty staple cases from the **Staple Cartridge**.



- 5 Attach a new staple case to the **Staple Cartridge**.



- 6 Attach the **Staple Cartridge**.



- 7 Close the **Front Door** of the **Finisher**.

 **Tips**

- Do not remove staples that remain in the machine. Otherwise, the stapling function will activate but no sheets will be stapled.

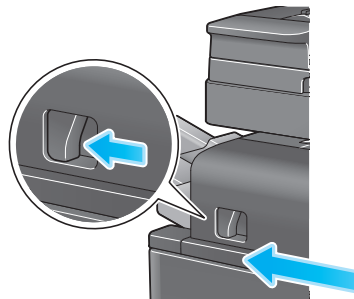
 **Notice**

- Be sure to replace the Staple Cartridge after the relevant message has appeared. If a Staple Cartridge is removed before the relevant message appears, it may result in a failure.

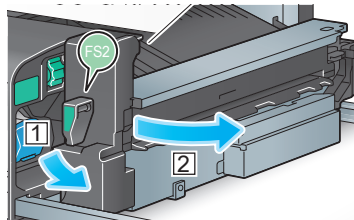


## Replacing a Staple Cartridge (for Finisher FS-533)

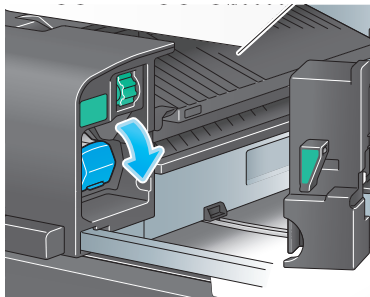
- 1** Pinch the **Lock Release Lever**, and slide the Finisher.



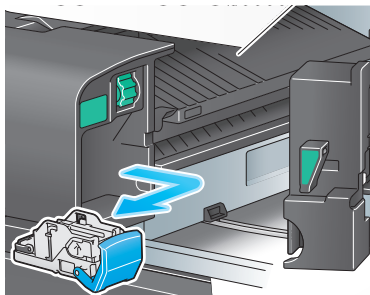
- 2** Pull the **Punch Kit Release Lever [FS2]** in the arrow direction, and open the Punch Kit.



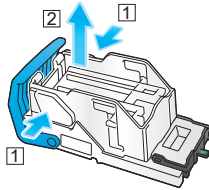
- 3** Unlock the **Staple Cartridge**.



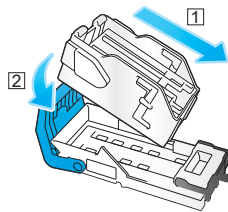
- 4** Pull out the **Staple Cartridge**.



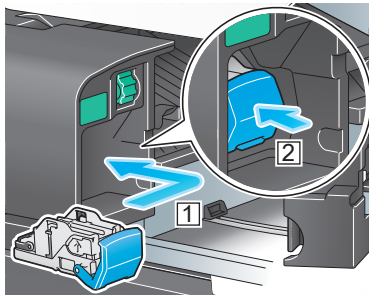
**5** Remove any empty staple cases from the **Staple Cartridge**.



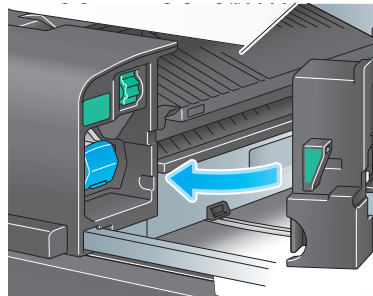
**6** Attach a new staple case to the **Staple Cartridge**.



**7** Attach the **Staple Cartridge**.



**8** Close the **Punch Kit**.



**9** Close the **Finisher**.

## 9 Read this if You Have a Problem

---

### Tips

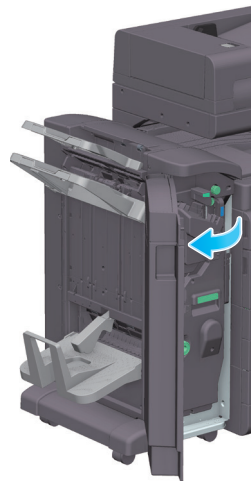
- Do not remove staples that remain in the machine. Otherwise, the stapling function will activate but no sheets will be stapled.

### Notice

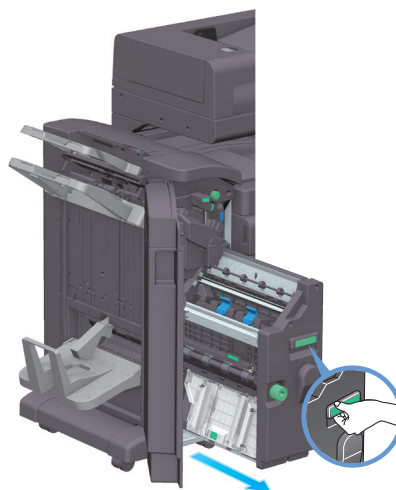
- Be sure to replace the Staple Cartridge after the relevant message has appeared.  
If a Staple Cartridge is removed before the relevant message appears, it may result in a failure.

## Replacing a Saddle Staple Cartridge (for Finisher FS-539 SD)

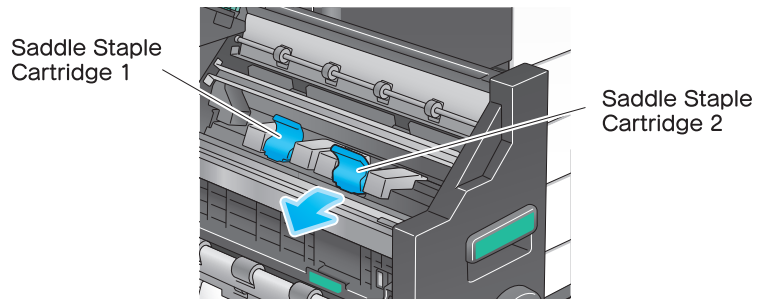
- 1 Open the **Front Door** of the **Finisher**.



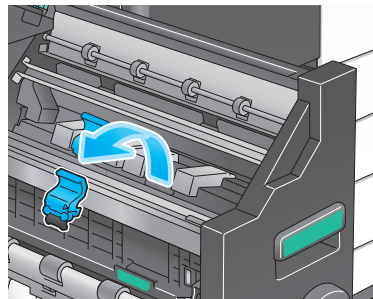
- 2 Pull out the **Saddle Stitcher**.



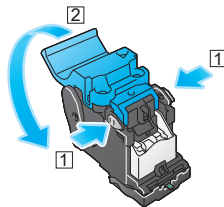
- 3 Tilt the blue knob of the **Saddle Staple Cartridge** toward you.



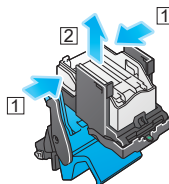
- 4 Pull out the **Saddle Staple Cartridge**.



- 5 Open the **Saddle Staple Cartridge** cover.



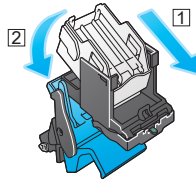
- 6 Remove any empty staple cases from the **Saddle Staple Cartridge**.



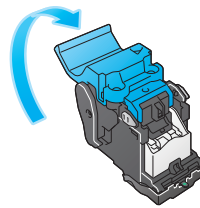
## 9 Read this if You Have a Problem

---

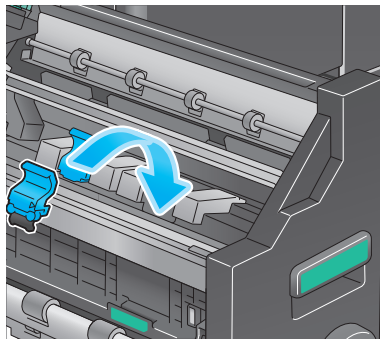
- 7 Attach a new staple case to the **Saddle Staple Cartridge**.



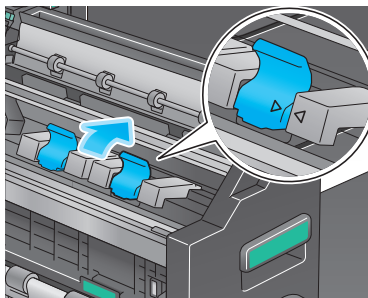
- 8 Close the **Saddle Staple Cartridge** cover.



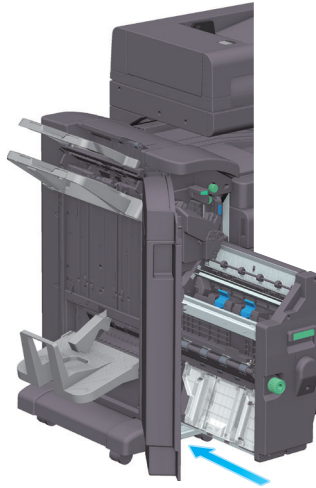
- 9 Attach the **Saddle Staple Cartridge**.



- 10 Push the blue knob of the **Saddle Staple Cartridge** to the back.  
→ Check that the mark of the Saddle Staple Cartridge matches that of the Saddle Stitcher.



- 11** Push in the **Saddle Stitcher**.



- 12** Close the Front Door of the **Finisher**.

 **Tips**

- Do not remove staples that remain in the machine. Otherwise, the stapling function will activate but no sheets will be stapled.

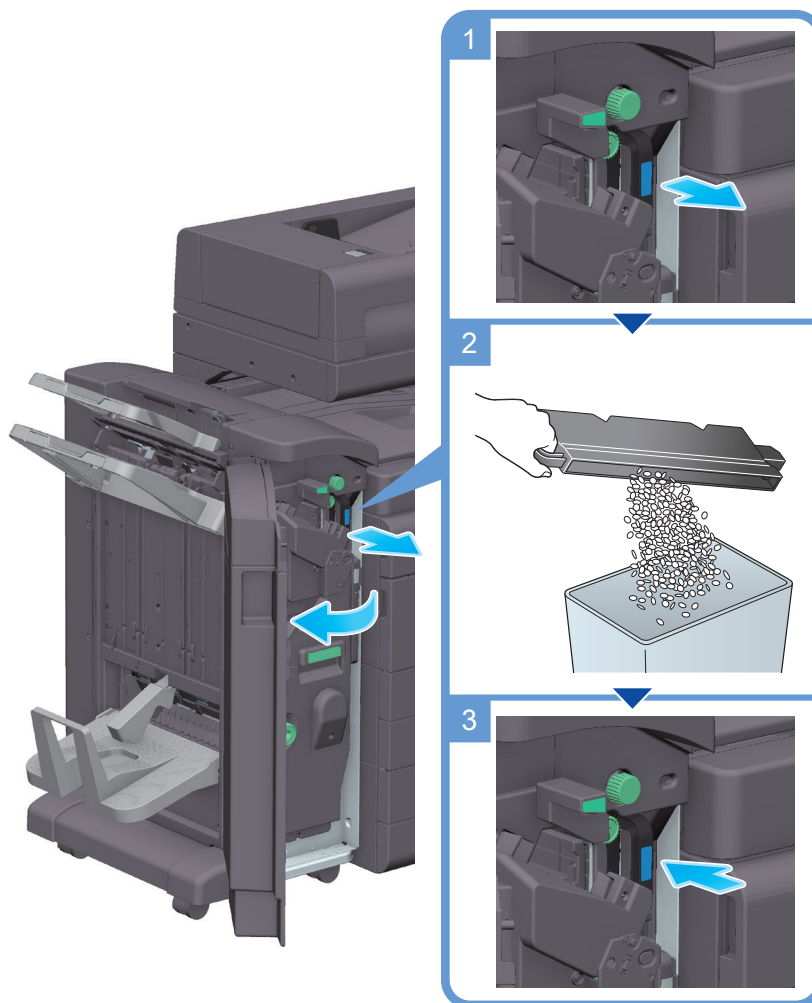
 **Notice**

- When moving the Saddle Stitcher, be sure to only hold the handle. Otherwise, your hand or finger may get caught in the machine. Be sure to replace the Saddle Staple Cartridge after the relevant message has appeared. If a Saddle Staple Cartridge is removed before the relevant message appears, it may result in a failure.

## 4.7 About hole-punch scraps

When the punch scrap box is full, a message appears to prompt you to dispose of the punch scraps (at replacement by user). Take action while referring to the label inside the machine.

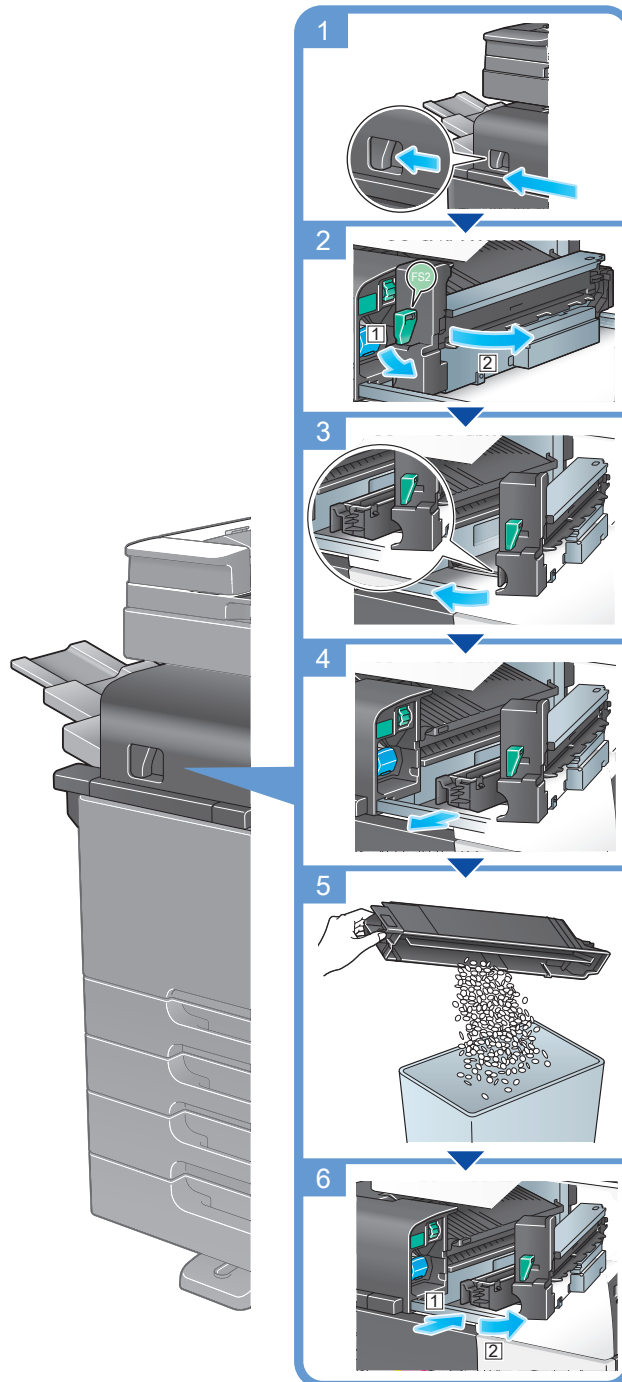
### Punch scrap processing (for Finisher FS-539 / Finisher FS-539 SD)



#### Tips

- The figure shows the Finisher FS-539 SD equipped with Punch Kit PK-524 and Relay Unit RU-514.

### Punch scrap processing (for Finisher FS-533)



 **Tips**

- The figure shows the Finisher FS-533 equipped with Punch Kit PK-519.





## Notice to users

Type	Notice
• Class A items (Broadcast communications unit for business use)	This class A product is registered in Electromagnetic Compatibility, and User may be required to take adequate measures for other purposes than household use.
• Class B items (Broadcast communications unit for household use)	This class B product is registered in Electromagnetic compatibility and is for domestic environment and also for general use.

- ※ This device is in the Class A items in the North America.
- ※ This device is in the Class B items.

