

FCC Part 15 Certification/ RSS 210
2AB7YVDLC52
20699-VDLC52
16-0279
December 15, 2016
Viper Design
VDLC52-79DP

The image shows a custom PCB assembly, labeled 18079 V1.1. The board is populated with a central microcontroller (NS2892) and various peripheral components, including resistors, capacitors, and a large black component (likely a power MOSFET or driver). A ruler and a circular scale are visible for scale.

Page 1 of 2

US Tech Test Report:
FCC ID:
IC:
Test Report Number:
Issue Date:
Customer:
Model:

FCC Part 15 Certification/ RSS 210
2AB7YVDLC52
20699-VDLC52
16-0279
December 15, 2016
Viper Design
VDLC52-79DP

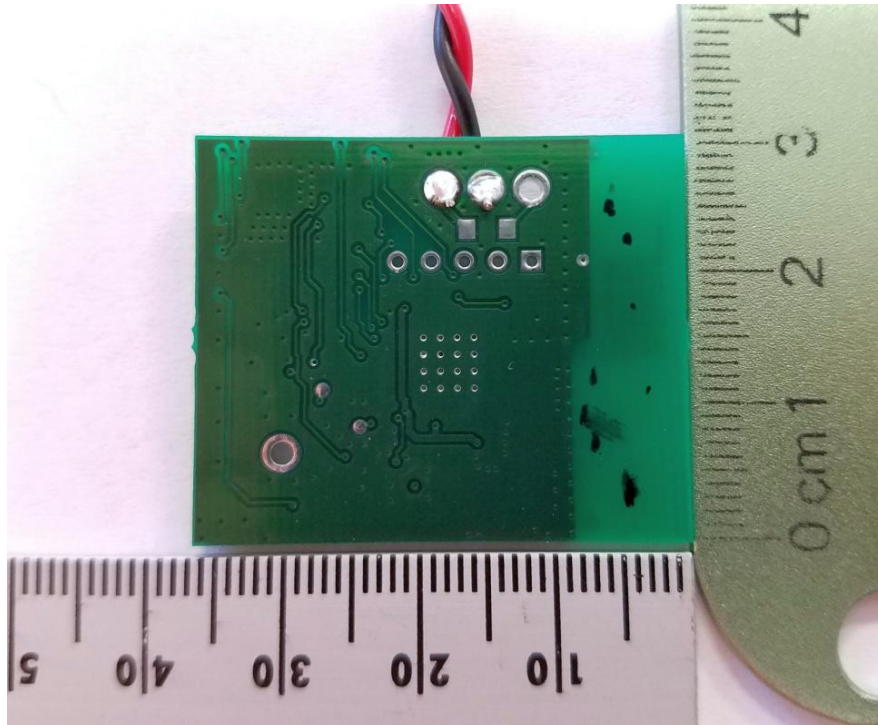


Figure 2. PCB, Back Side