

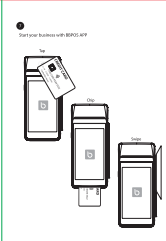
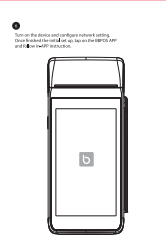
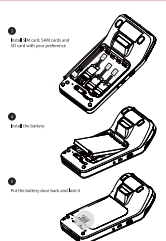
**Quick Start Guide**

**Introduction**

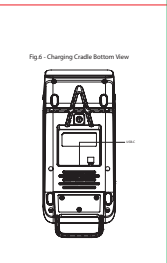
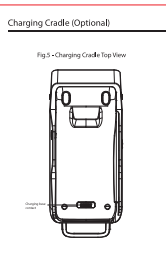
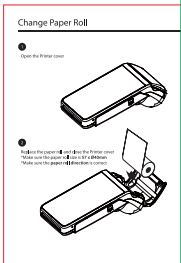
Thank you for purchasing the device. Before using the device, please read the Quick Start Guide carefully. This guide will help you get started with the device. For more information, please refer to the user manual.

**Step 1: Turn on the battery door button**

**Step 2: Open the battery door**



FRONT PAGE



**Charge with Cradle**

**Cautions & Important Notes**

- Do not use the device in wet or humid environments.
- Do not use the device in high temperature environments.
- Do not use the device in high pressure environments.
- Do not use the device in high magnetic field environments.
- Do not use the device in high vibration environments.
- Do not use the device in high electromagnetic interference environments.
- Do not use the device in high radio frequency environments.
- Do not use the device in high power environments.
- Do not use the device in high speed environments.
- Do not use the device in high acceleration environments.
- Do not use the device in high deceleration environments.
- Do not use the device in high shock environments.
- Do not use the device in high impact environments.
- Do not use the device in high drop environments.
- Do not use the device in high fall environments.
- Do not use the device in high fall height environments.
- Do not use the device in high fall speed environments.
- Do not use the device in high fall acceleration environments.
- Do not use the device in high fall deceleration environments.
- Do not use the device in high fall shock environments.
- Do not use the device in high fall impact environments.
- Do not use the device in high fall drop environments.
- Do not use the device in high fall fall environments.
- Do not use the device in high fall height environments.
- Do not use the device in high fall speed environments.
- Do not use the device in high fall acceleration environments.
- Do not use the device in high fall deceleration environments.
- Do not use the device in high fall shock environments.
- Do not use the device in high fall impact environments.
- Do not use the device in high fall drop environments.
- Do not use the device in high fall fall environments.

**Troubleshooting**

**Problem**

**Solution**

Device does not power on	Check if the battery is fully charged.
Device does not connect to the network	Check if the network is available.
Device does not print	Check if the paper roll is installed correctly.
Device does not scan	Check if the camera lens is clean.
Device does not work properly	Restart the device.

**Disclaimer**

The information in this document is provided for informational purposes only. It is not intended to constitute an offer, recommendation, or any other financial product. The information is subject to change without notice. Please refer to the user manual for more information.

**BBPOS**

BBPOS is a registered trademark of BBPOS Technology Co., Ltd. All rights reserved.



BACK PAGE