



## **Appendix II**

### **Internal Photographs**

## Open View of EUT



## Internal View of EUT-1



## Internal View of EUT-2



## Internal View of EUT-3





Detail View of EUT-1



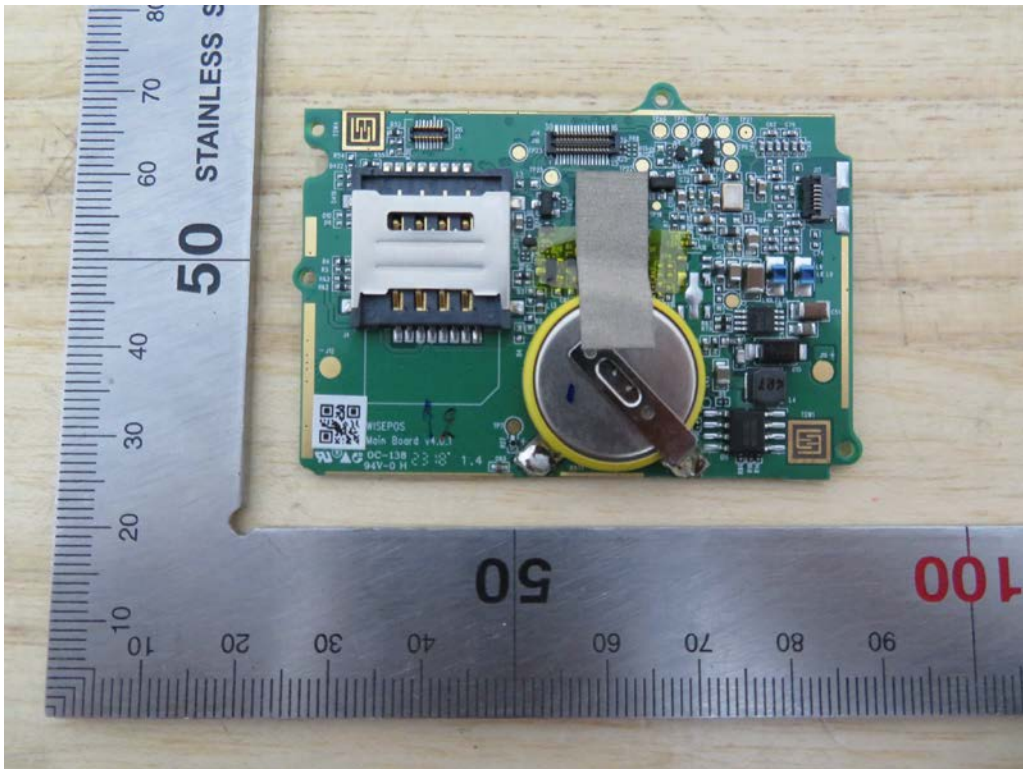
Detail View of EUT-2



Detail View of EUT-3

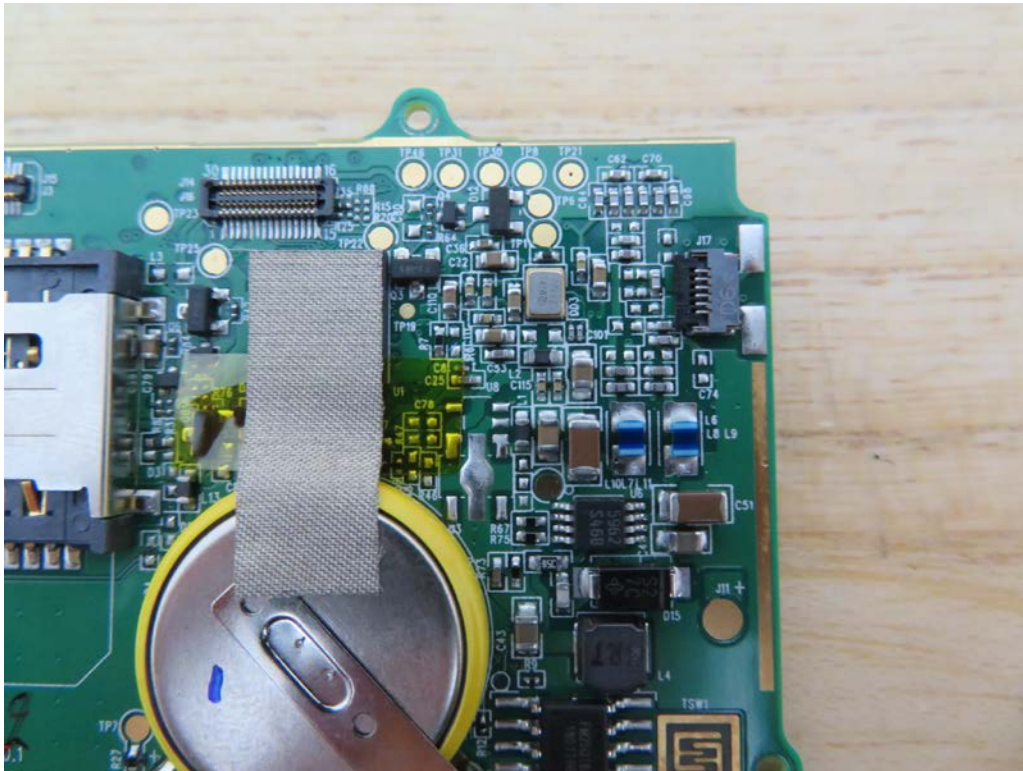


Detail View of EUT-4

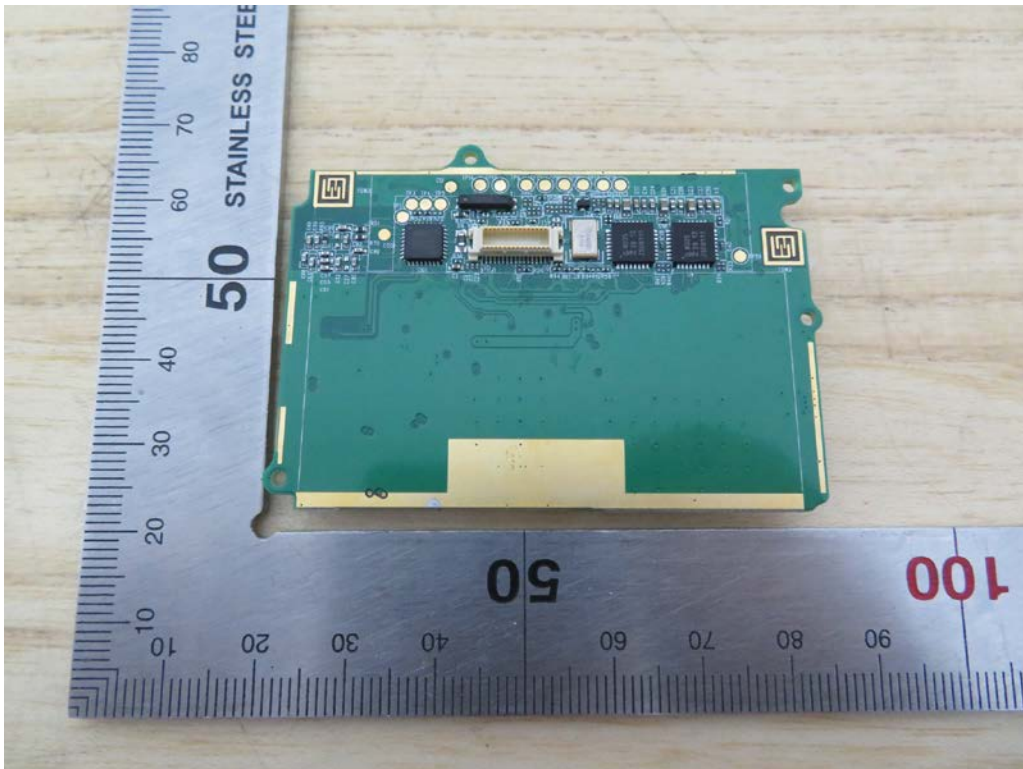




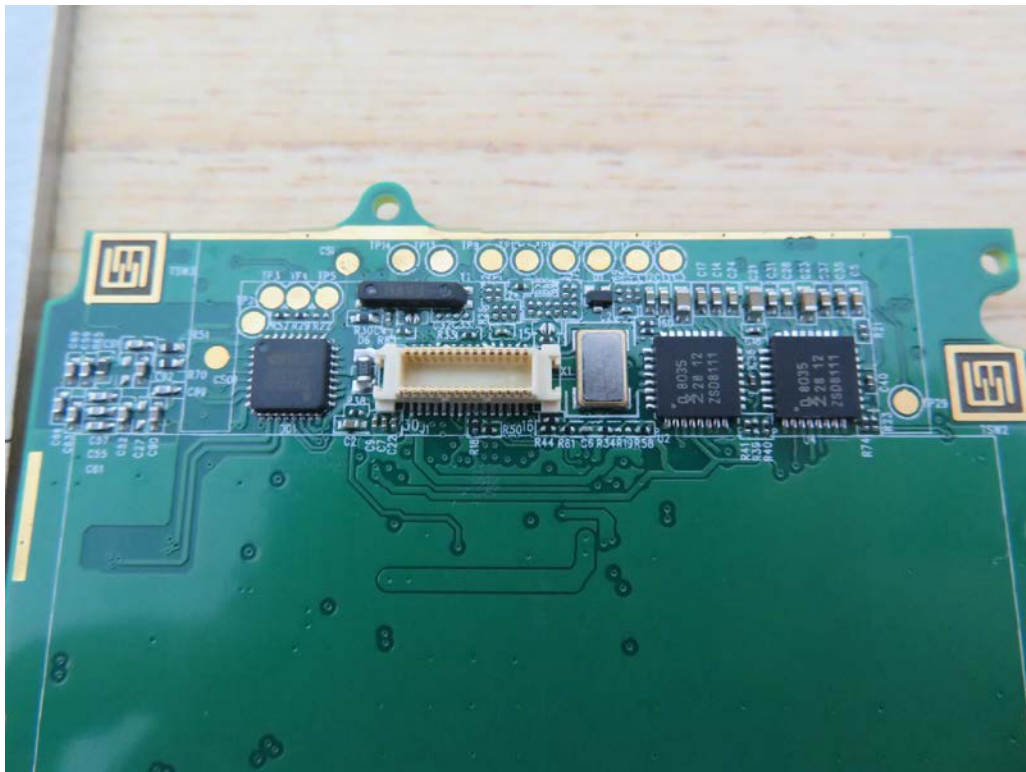
Detail View of EUT-5



Detail View of EUT-6



Detail View of EUT-7



Detail View of EUT-8





## Detail View of EUT-9



## Detail View of EUT-10

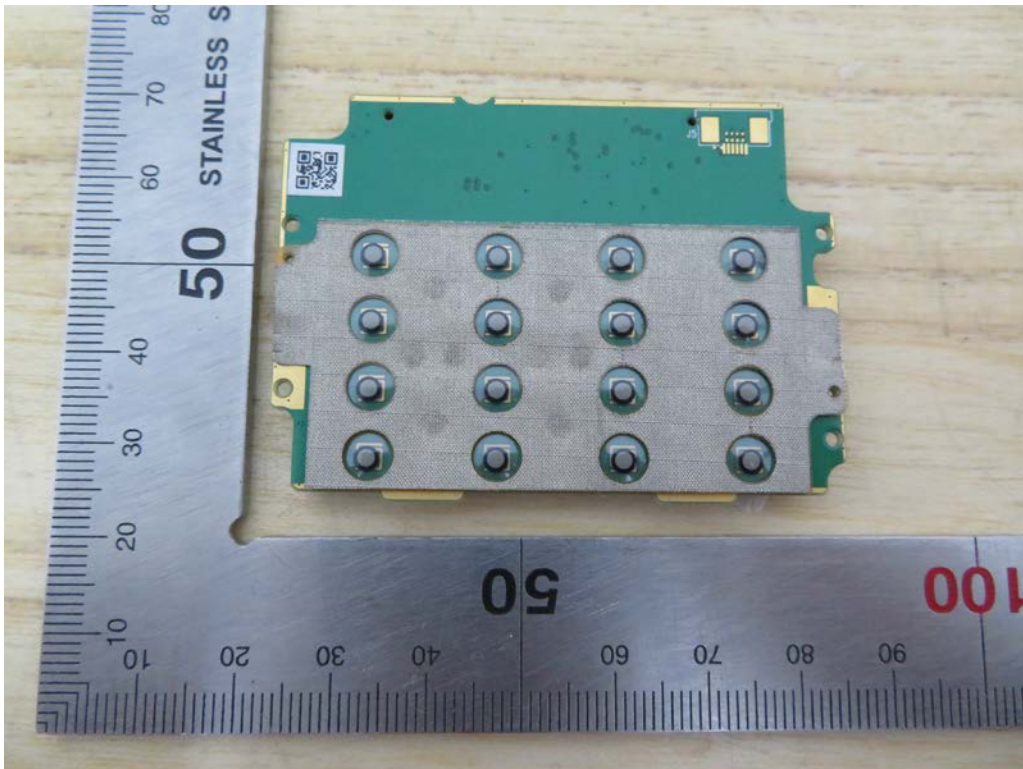




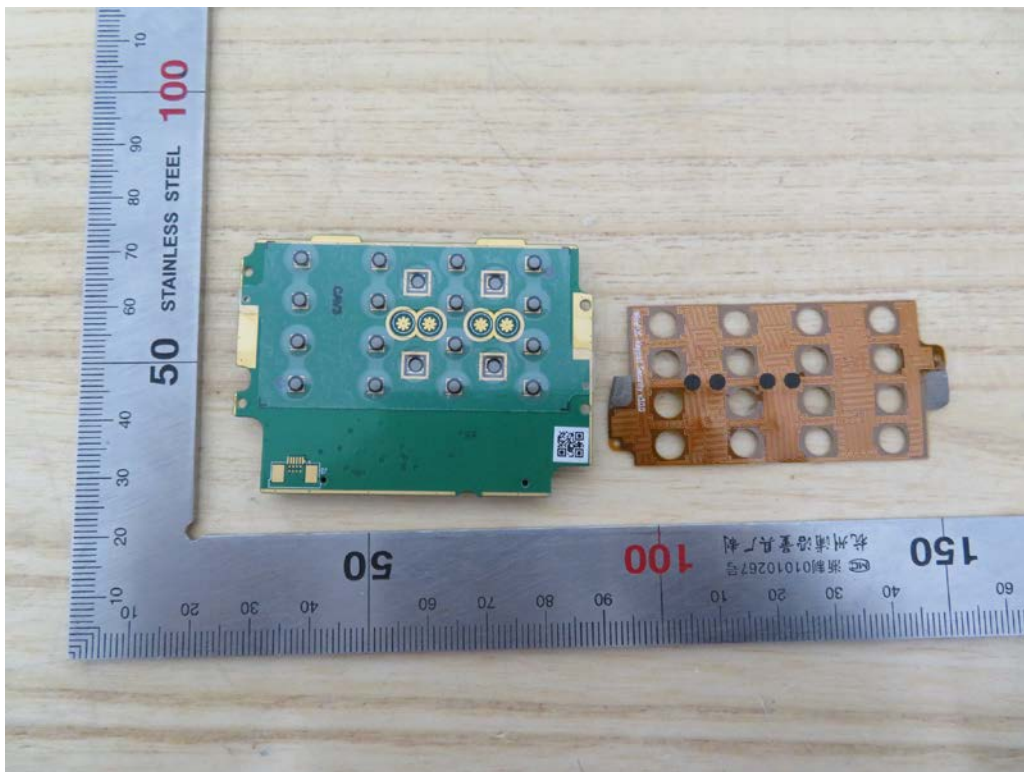
Detail View of EUT-11



Detail View of EUT-12



Detail View of EUT-13



Detail View of EUT-14





## Detail View of EUT-15



## Detail View of EUT-16

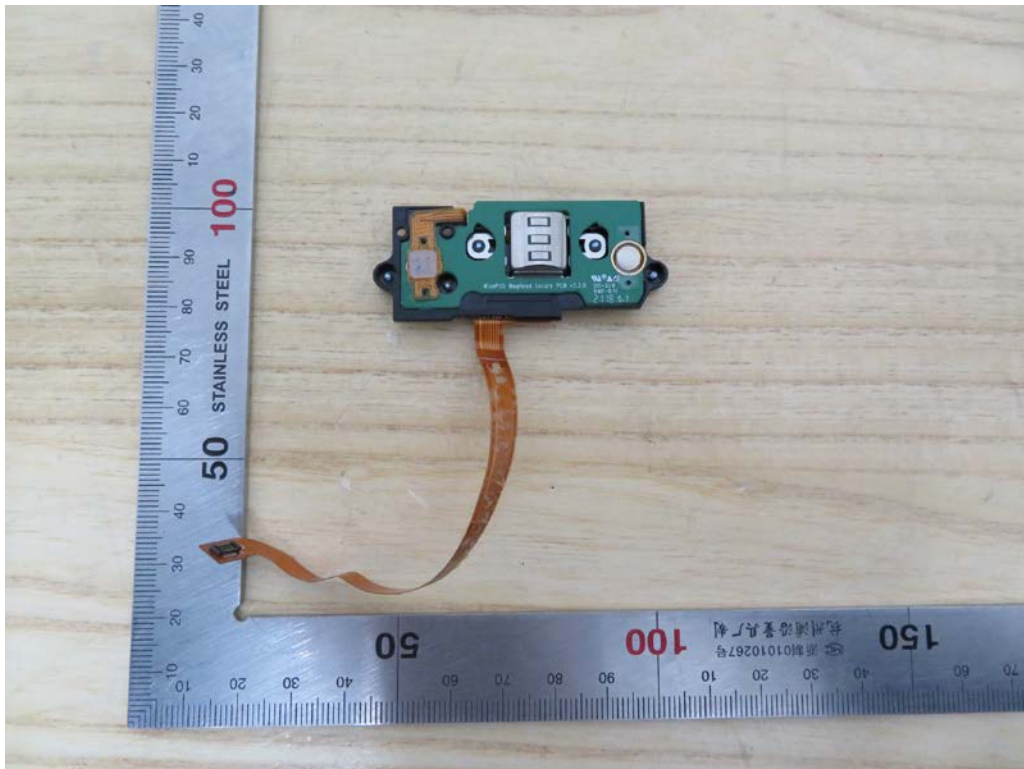




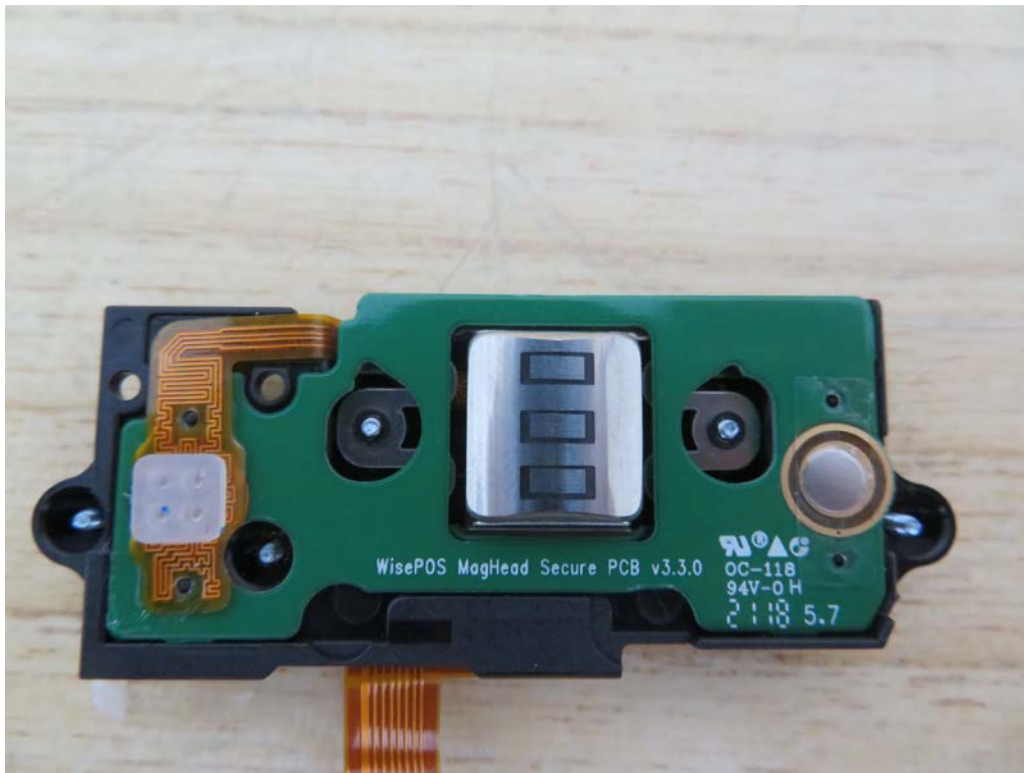
Detail View of EUT-17



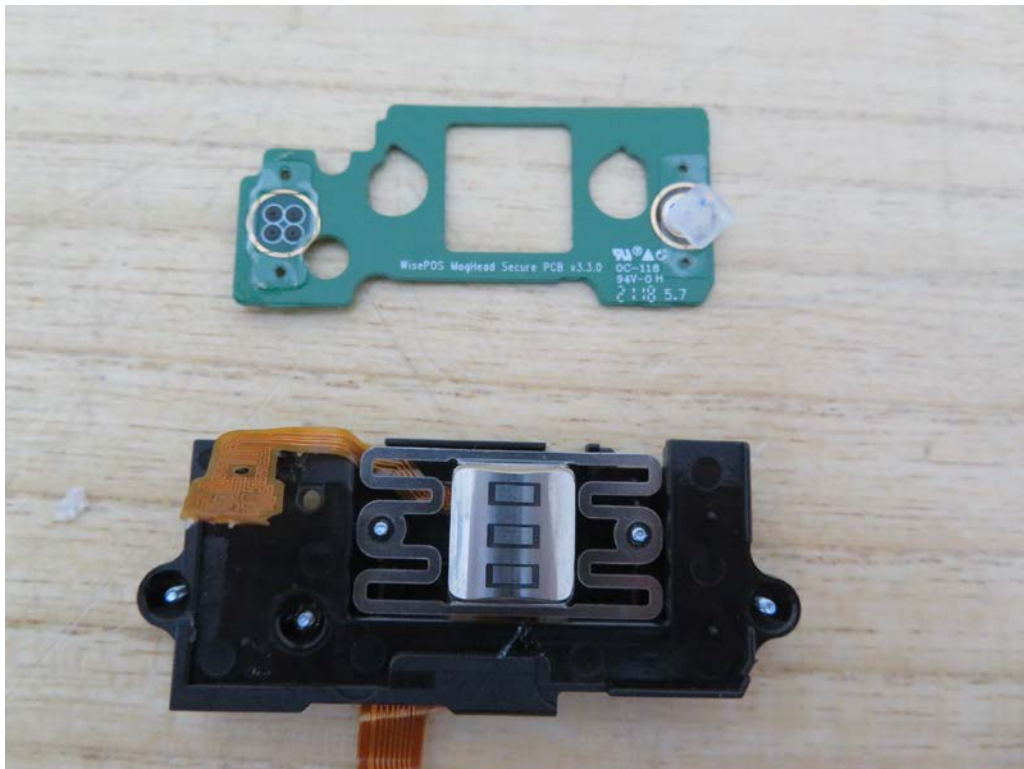
Detail View of EUT-18



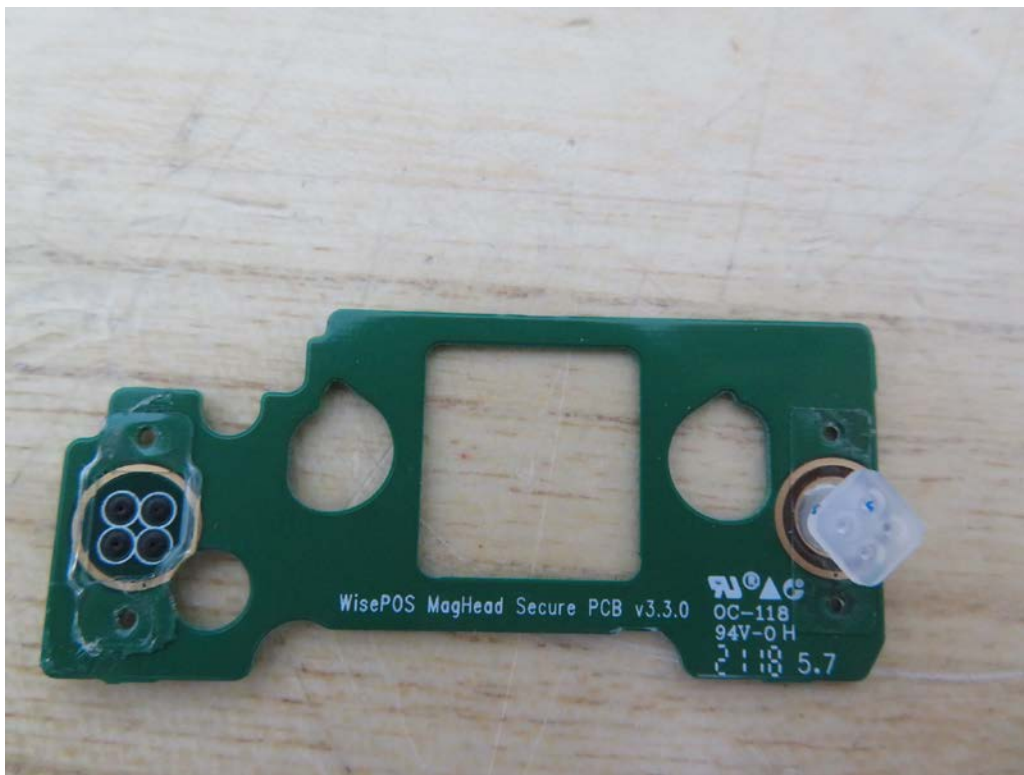
Detail View of EUT-19



Detail View of EUT-20



Detail View of EUT-21



Detail View of EUT-22

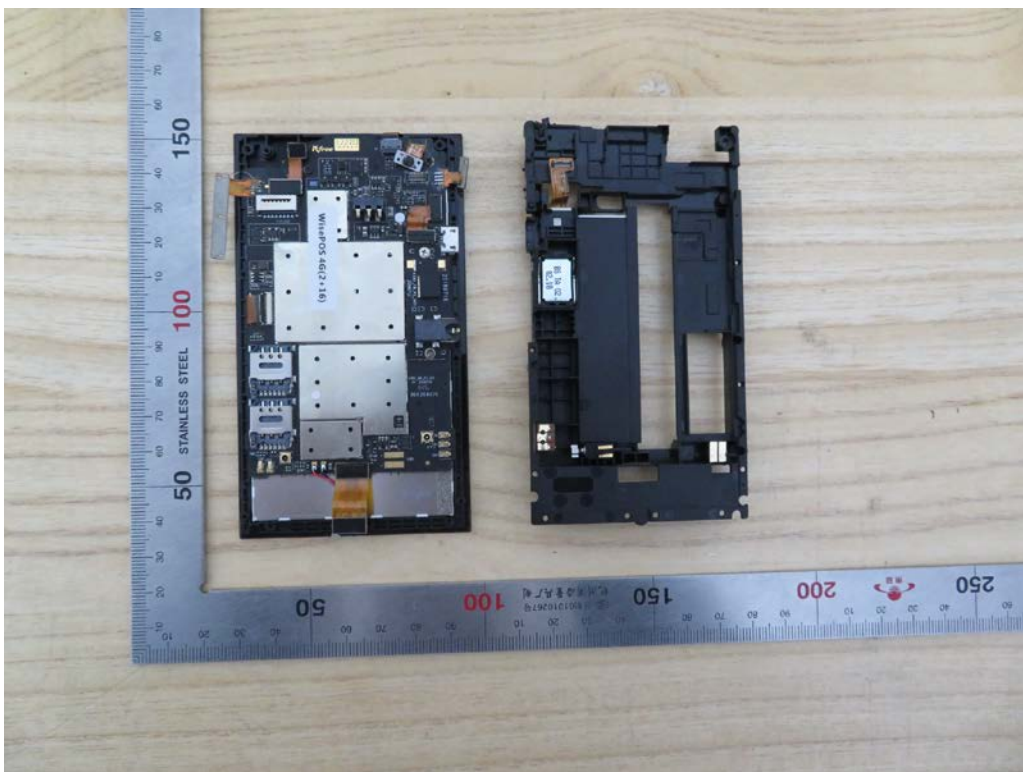




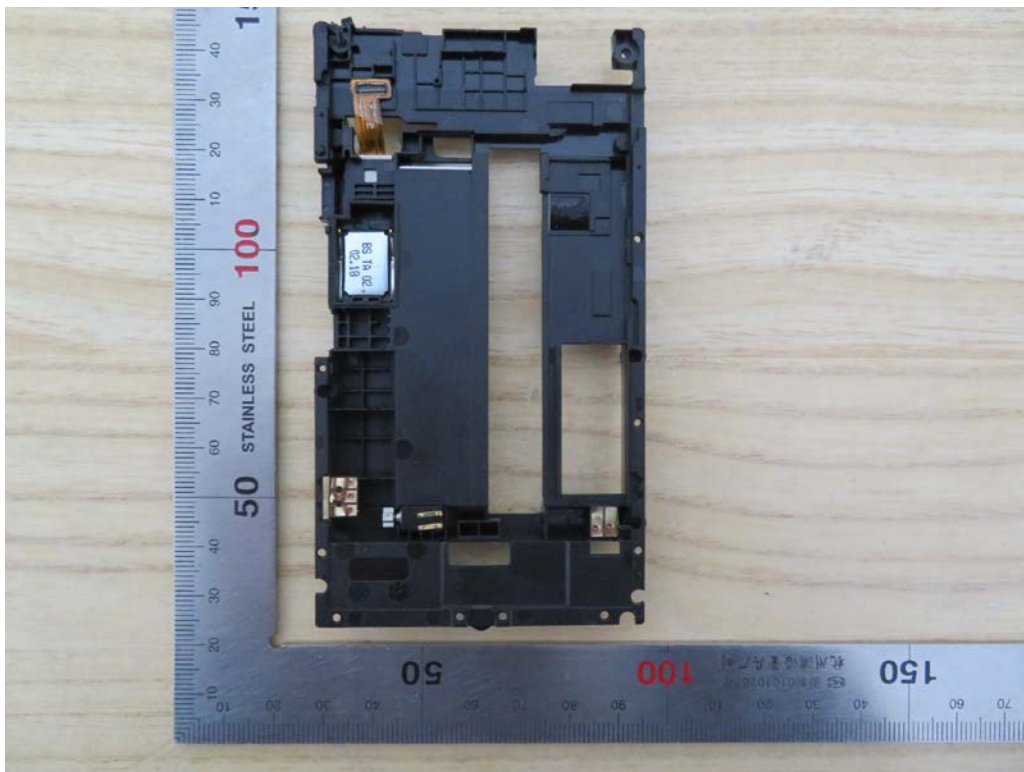
Detail View of EUT-23



Detail View of EUT-24



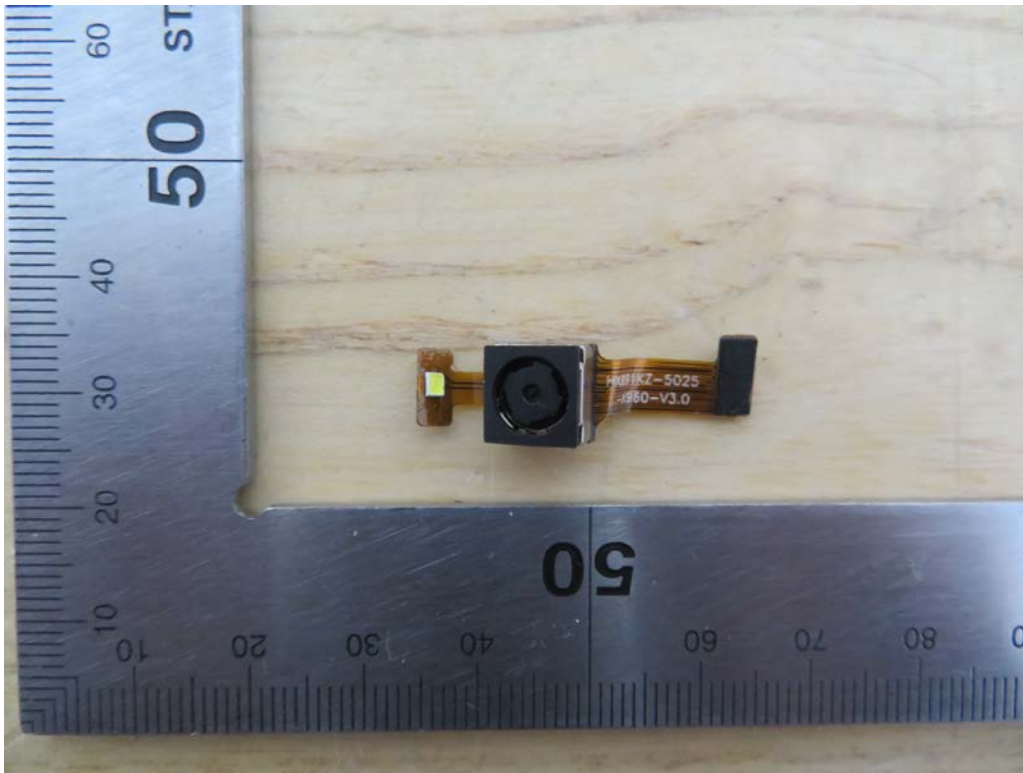
Detail View of EUT-25



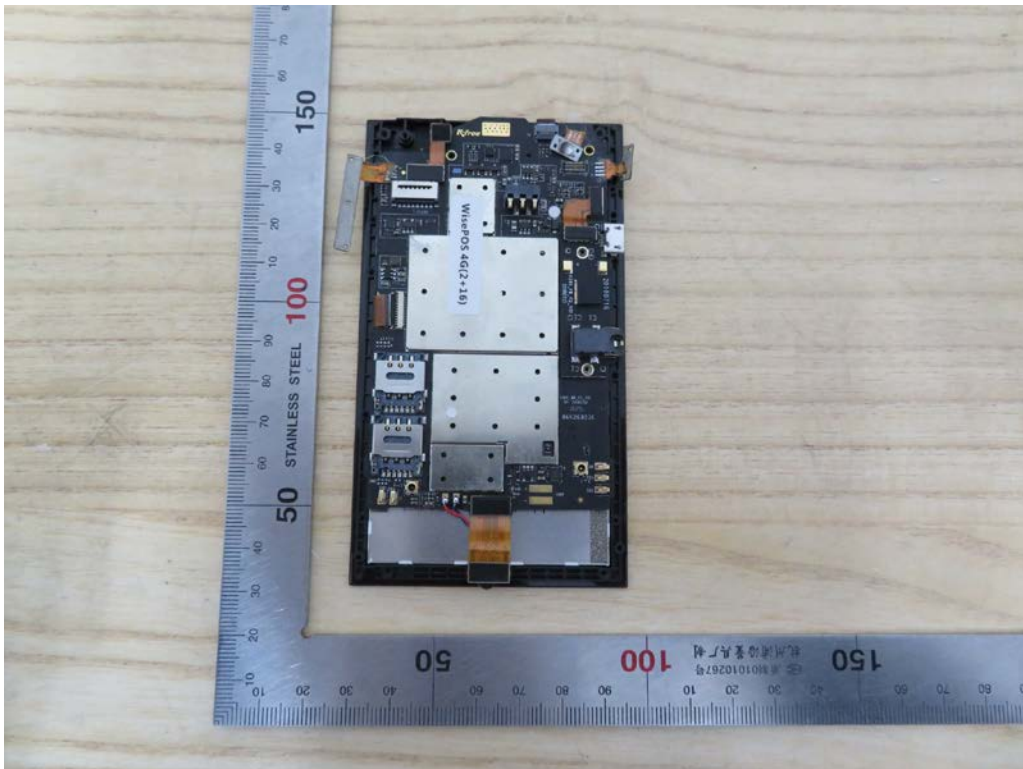
Detail View of EUT-26



Detail View of EUT-27

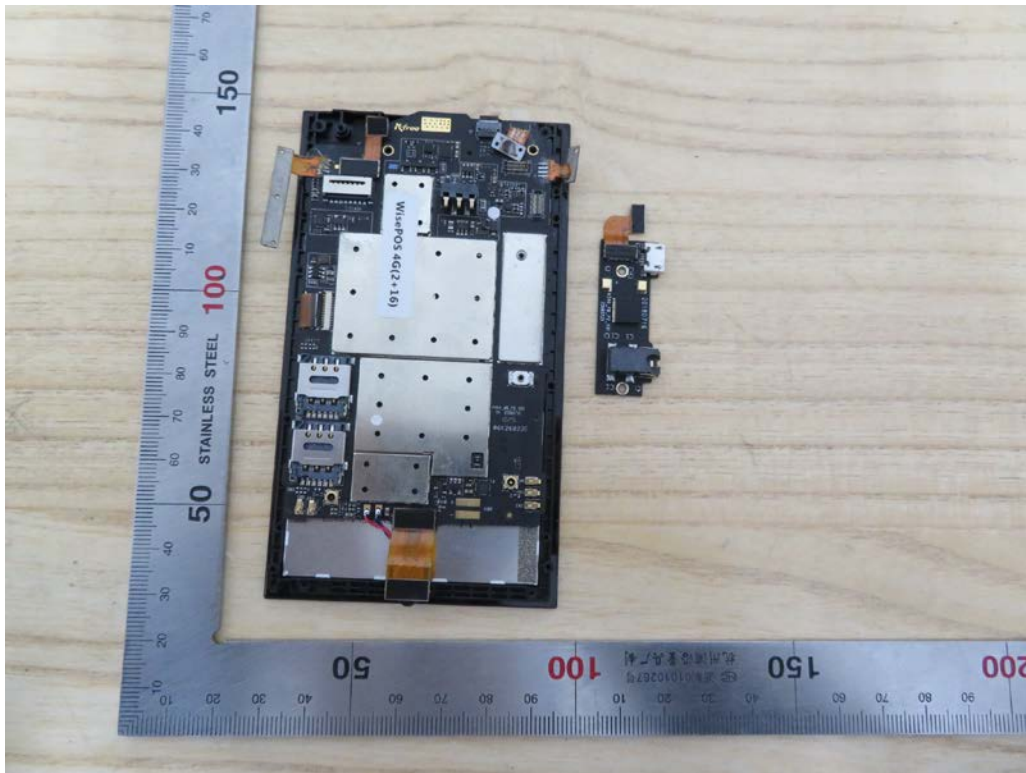


Detail View of EUT-28

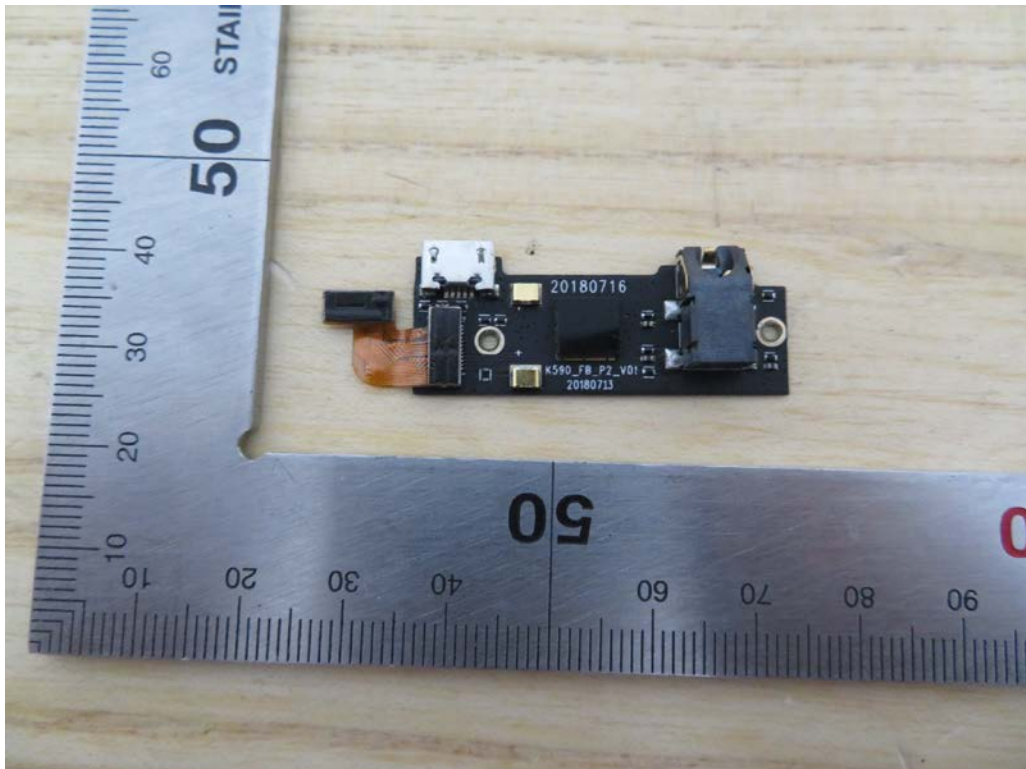




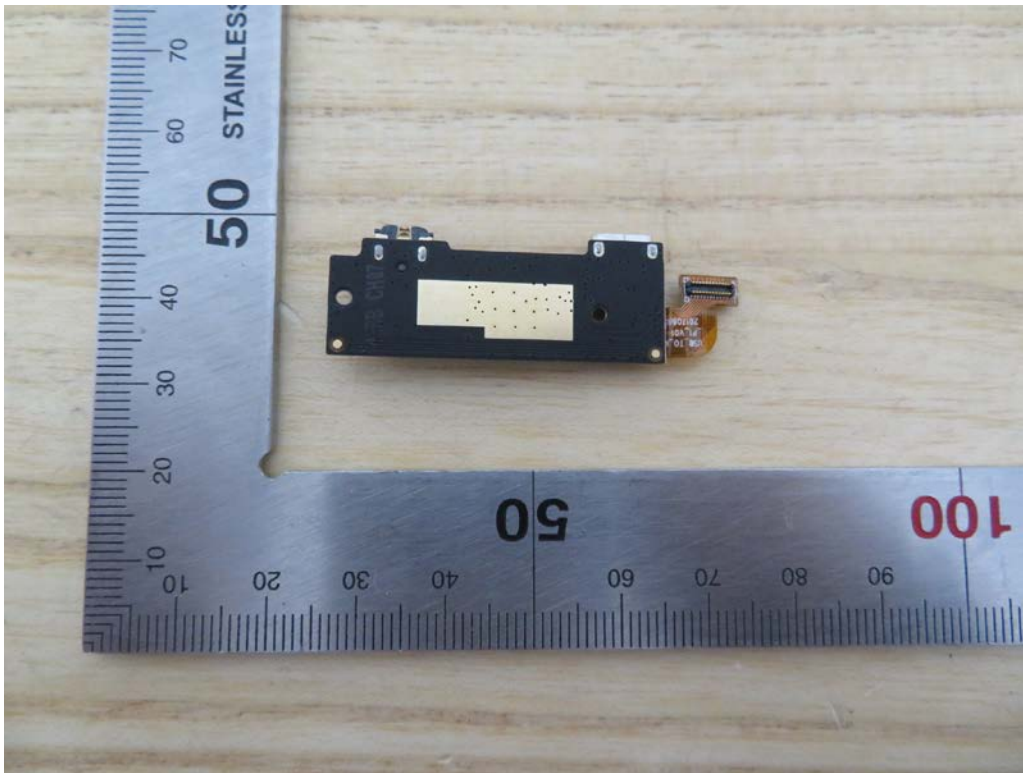
Detail View of EUT-29



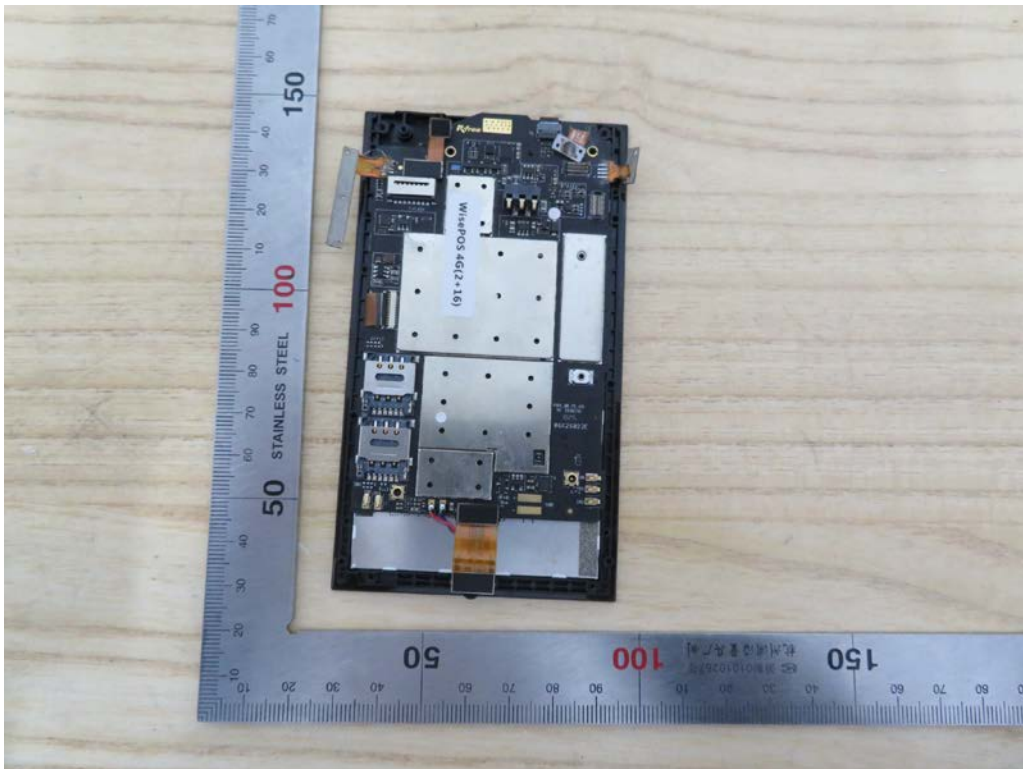
Detail View of EUT-30



Detail View of EUT-31



Detail View of EUT-32





Detail View of EUT-33



Detail View of EUT-34

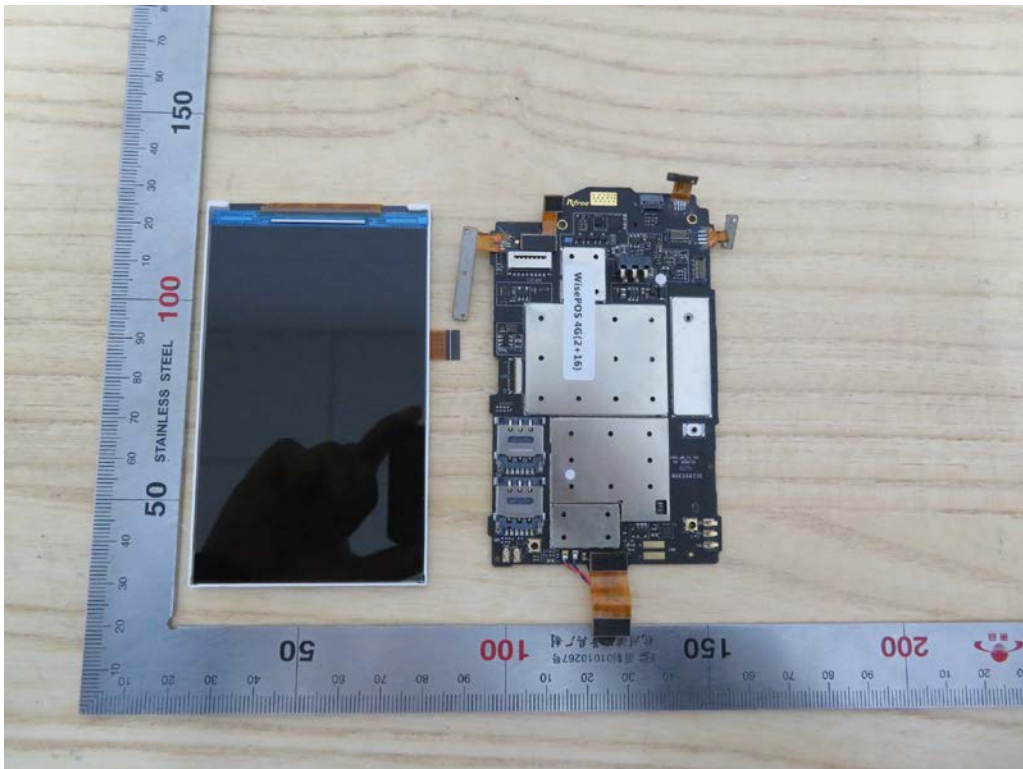




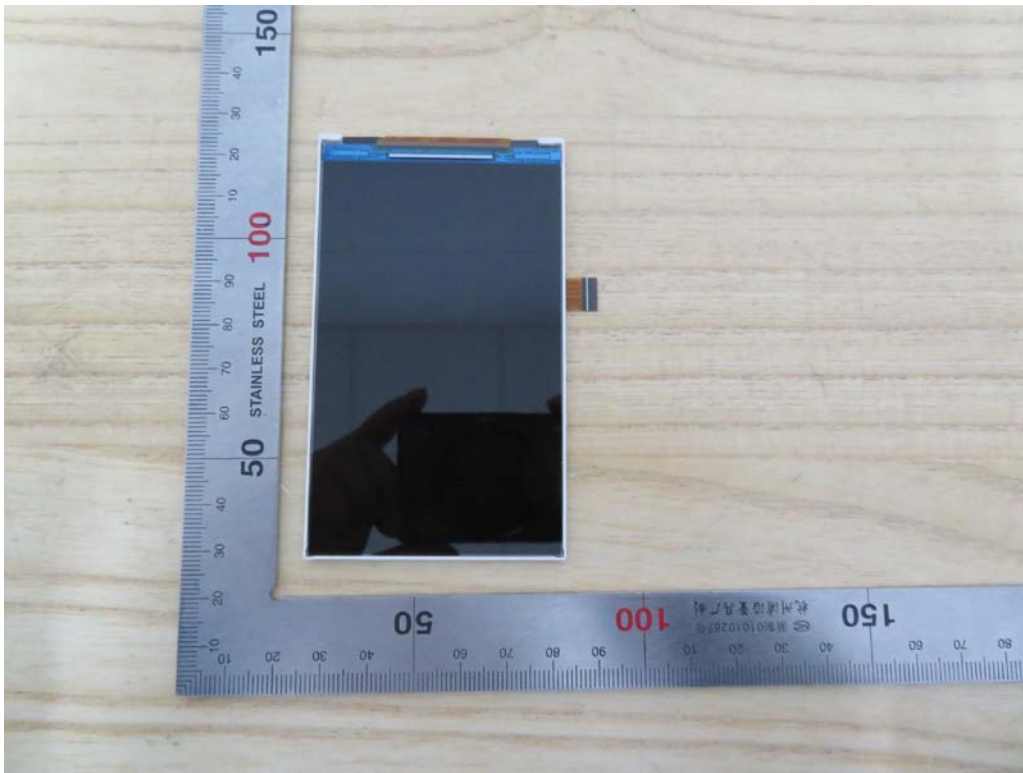
## Detail View of EUT-35



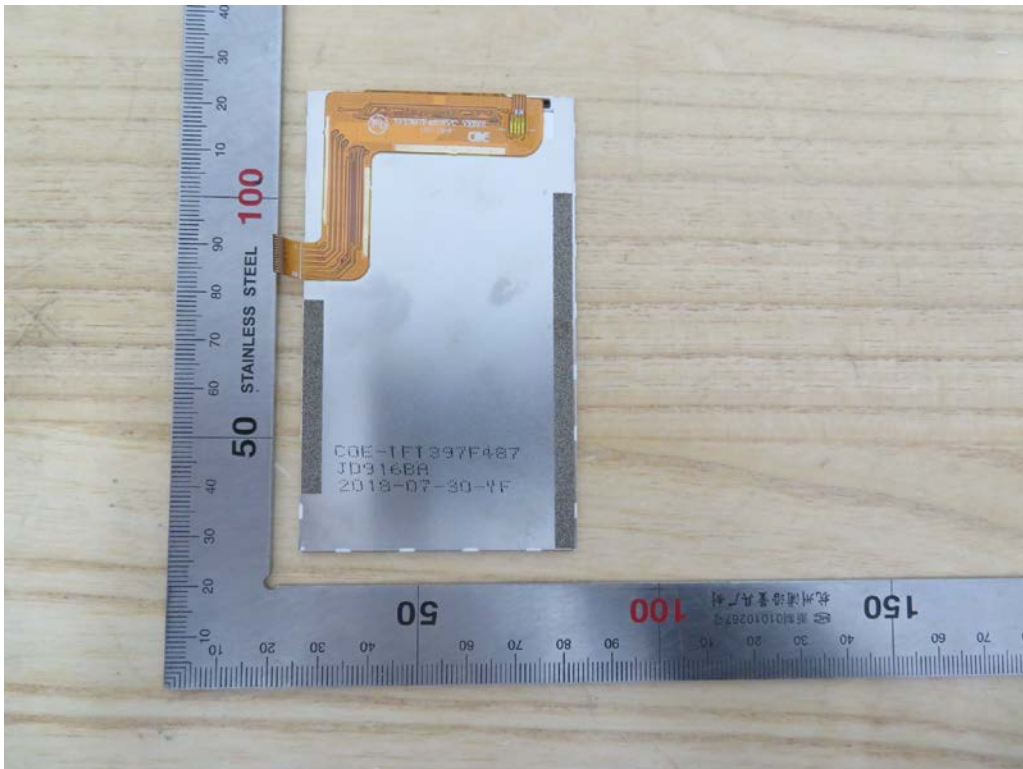
## Detail View of EUT-36



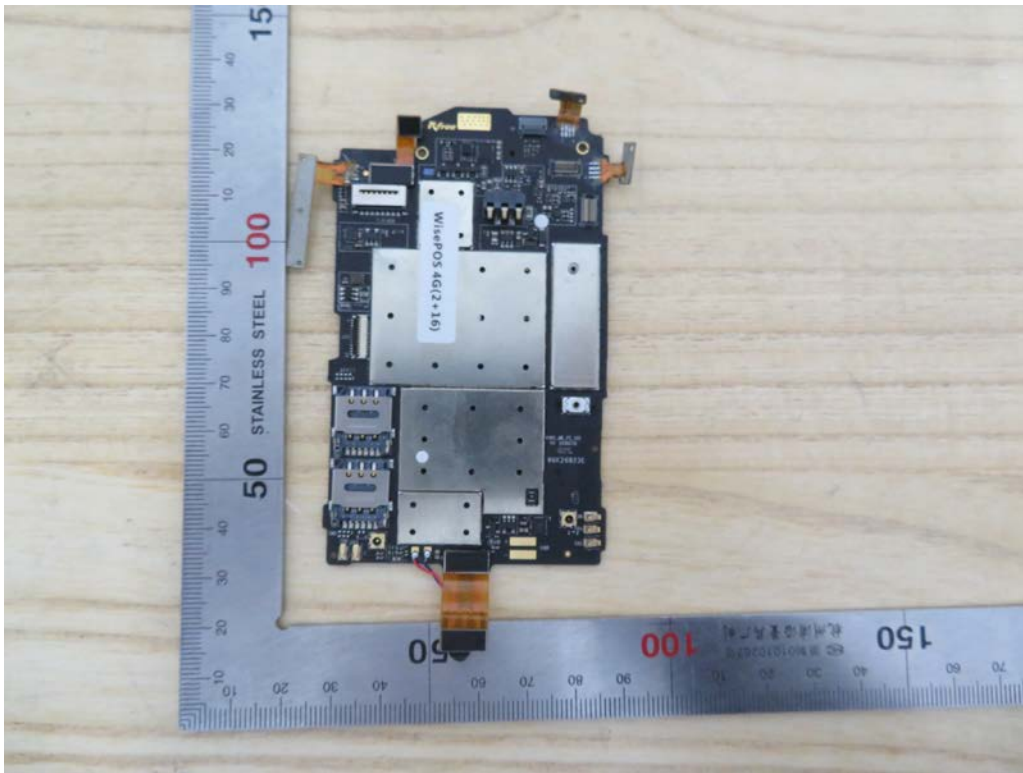
Detail View of EUT-37



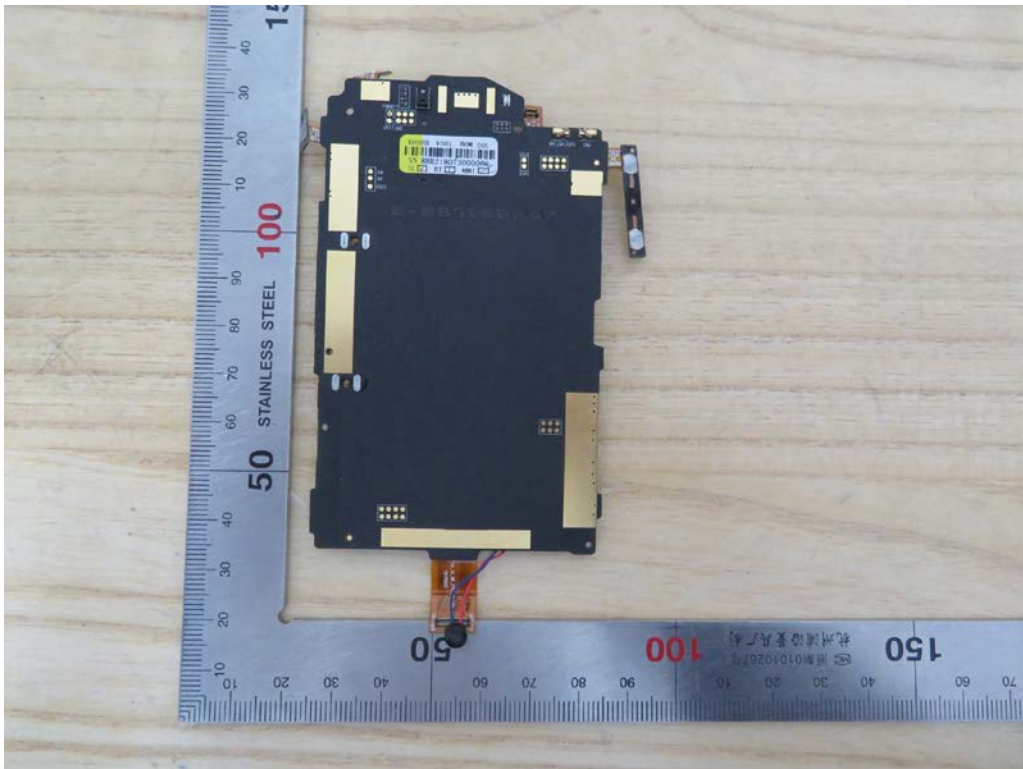
Detail View of EUT-38



Detail View of EUT-39

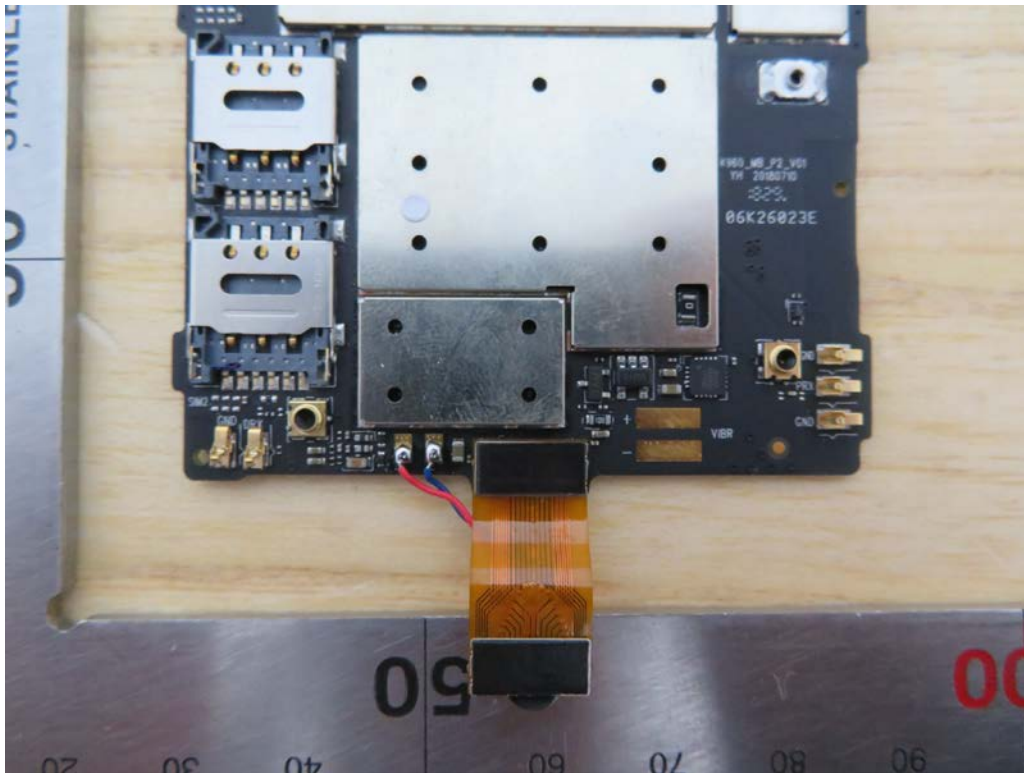


Detail View of EUT-40

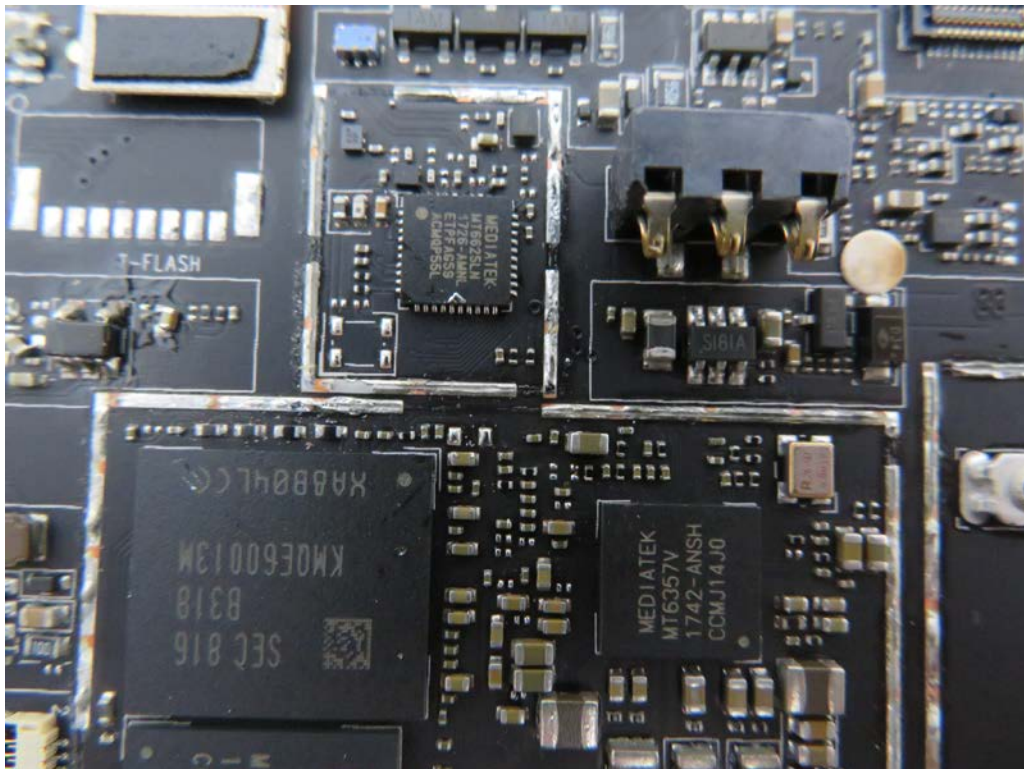




Detail View of EUT-41



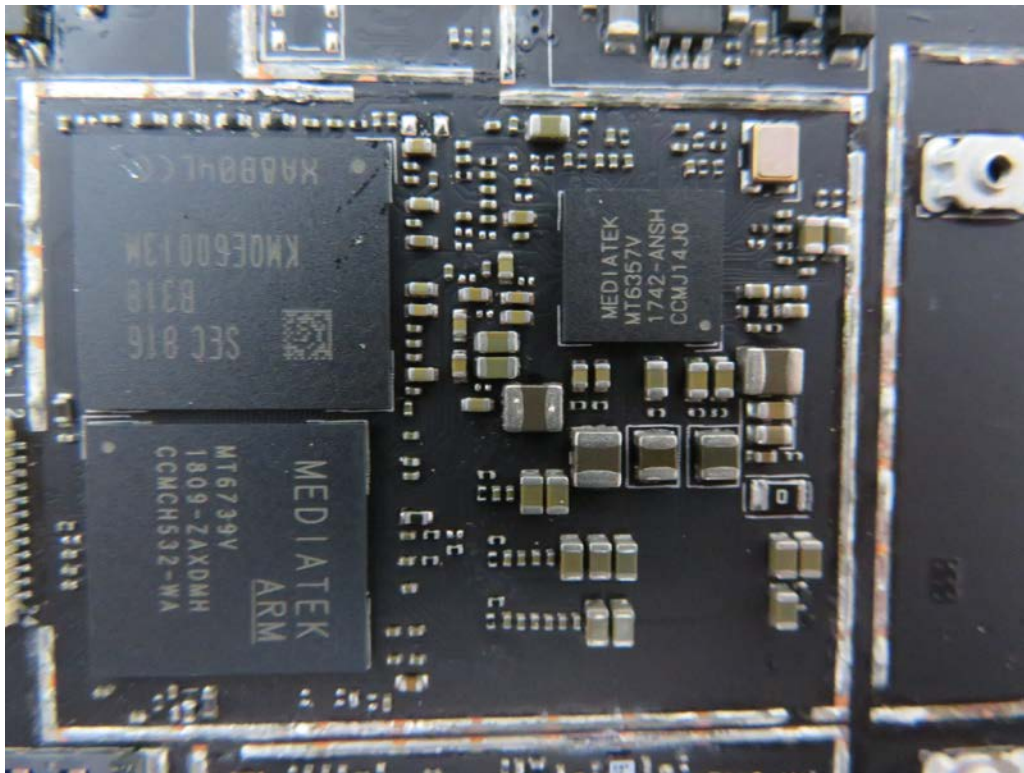
Detail View of EUT-42



A detailed view of the internal components of a mobile phone. The image shows a black printed circuit board (PCB) populated with various electronic components. On the left, there is a SIM card slot with a metal contact pad. Below the slot, there are two gold-colored connectors labeled 'GND' and 'DRX'. In the center, a large black integrated circuit (IC) is visible, labeled 'V07843 1739- ASM42'. To the right of this IC, there is another IC labeled 'V07810-31 1810 ASM090'. The PCB is covered with numerous smaller components, including capacitors, resistors, and other ICs. The overall layout is compact and organized.



Detail View of EUT-45



Detail View of EUT-46

