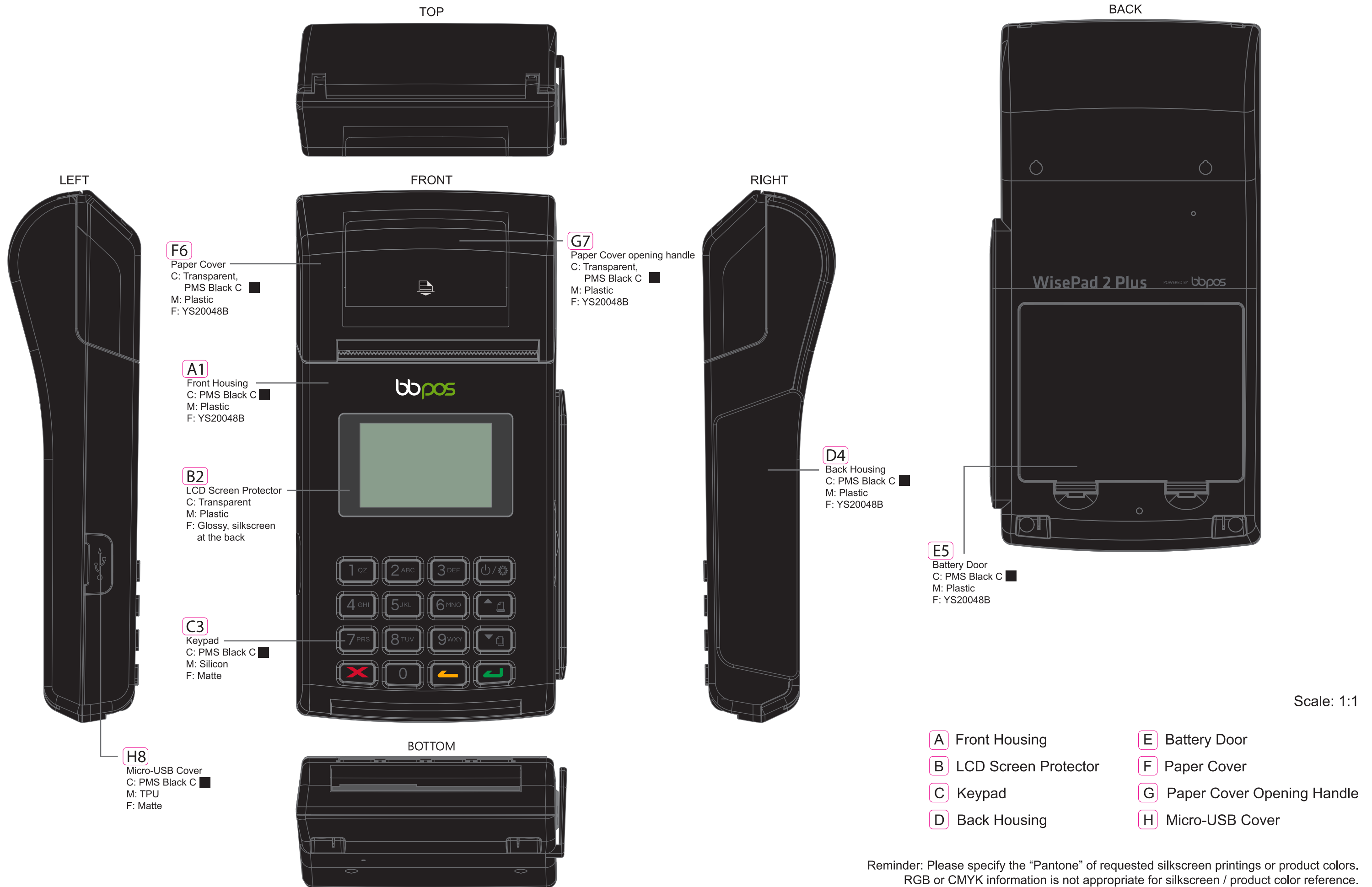


WisePad 2 Plus (WPP22)

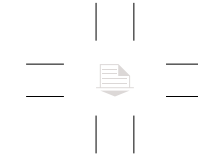
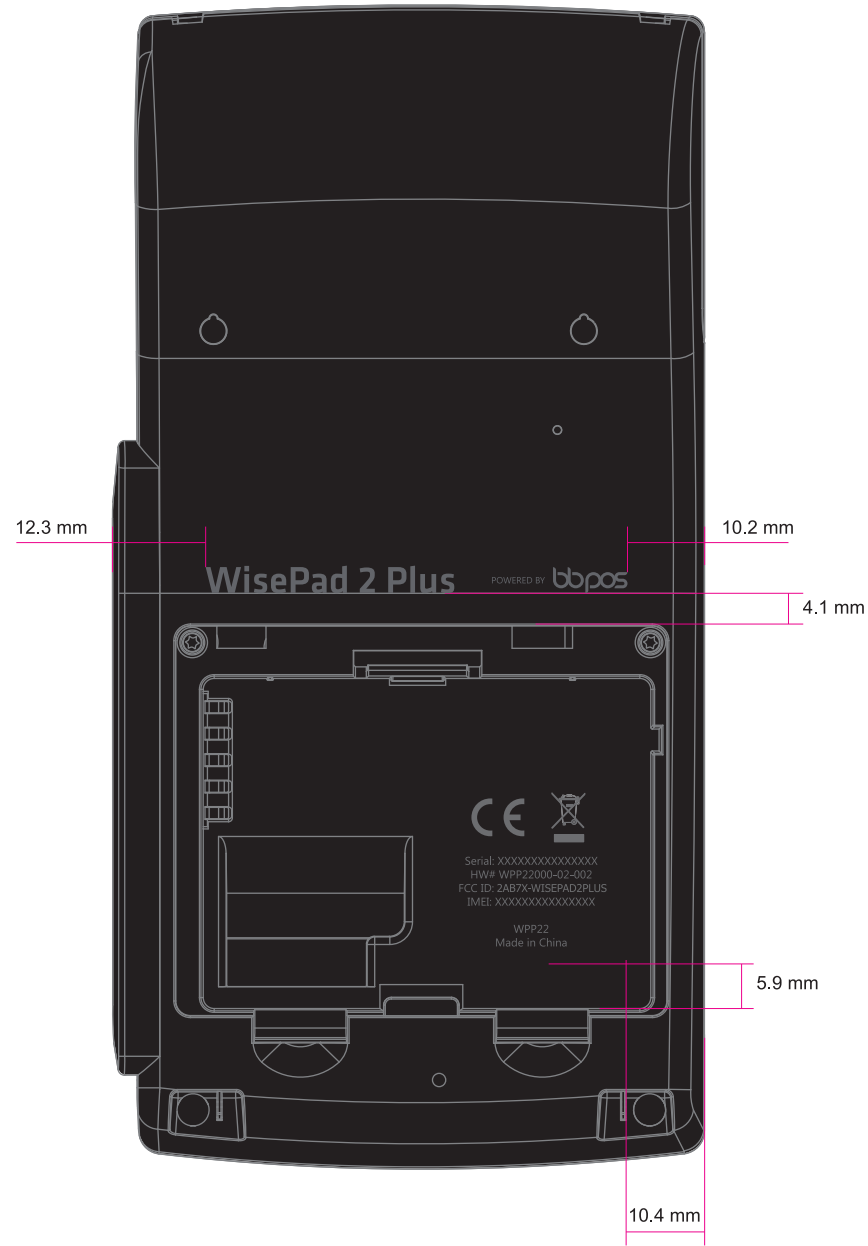
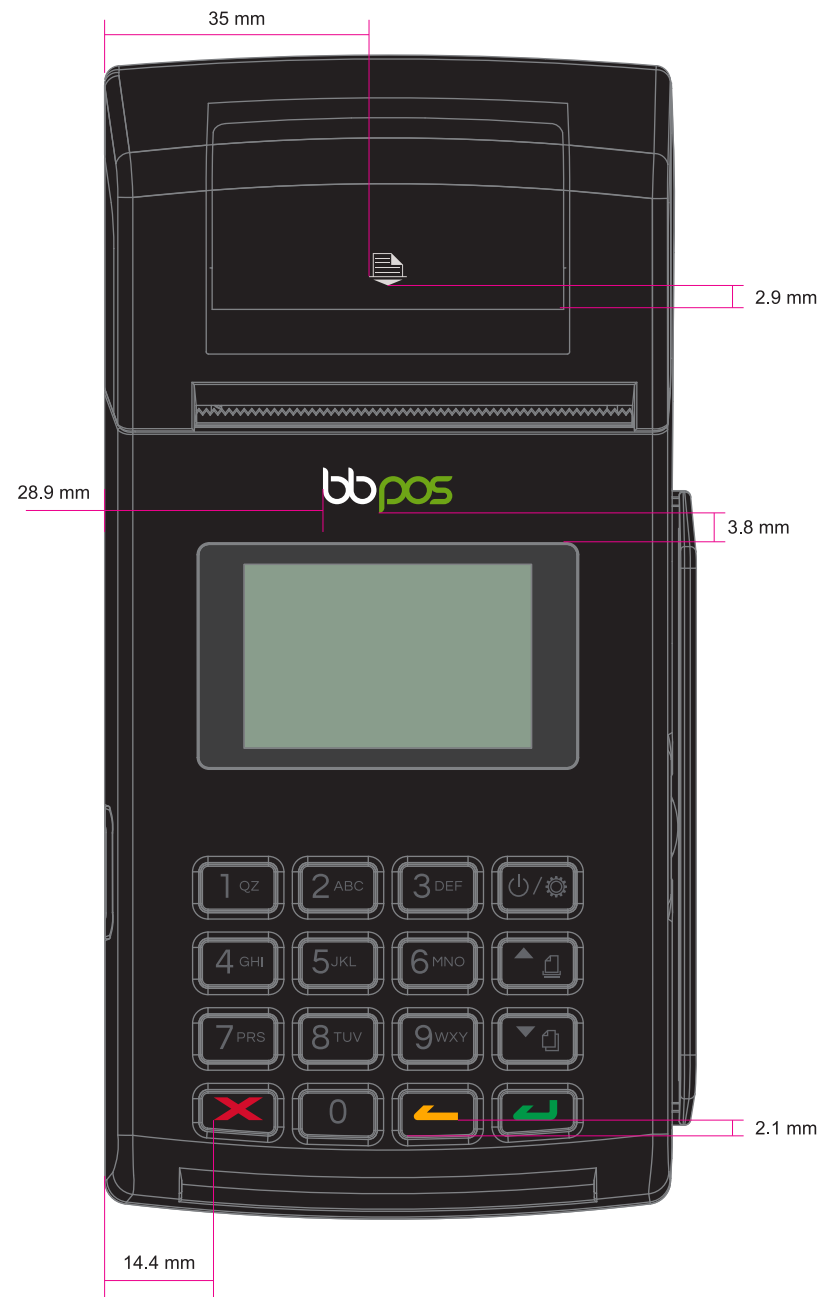
Section 1 : Please specify the product color and silkscreen position for production reference.



Reminder: Please specify the "Pantone" of requested silkscreen printings or product colors. RGB or CMYK information is not appropriate for silkscreen / product color reference.

WisePad 2 Plus (WPP22)

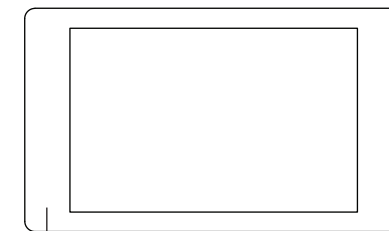
Section 2 : Please specify the product color and silkscreen position for production reference.



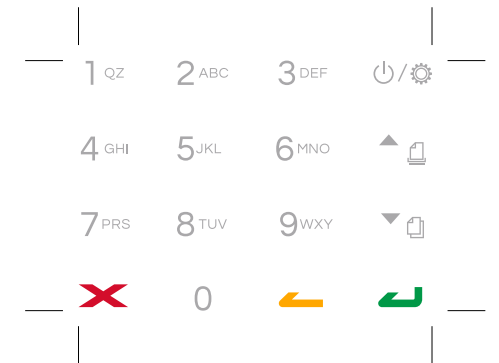
5 mm X 4.3 mm
Silkscreen printing
■ PMS Cool Gray 1C



17.1 mm X 6 mm
Silkscreen printing
□ PMS White
■ PMS 369C



Silkscreen at the back
■ PMS Black



46.8 mm X 33 mm
Silkscreen printing
■ PMS Cool Gray 6C
■ PMS 186C
■ PMS 130C
■ PMS 347C



55.8 mm X 3.7 mm
Silkscreen Printing
■ PMS Cool Gray 10C



25 mm X 35 mm
Black sticker
words printed in 70% black

Sticker Area: 25mm X 35mm

Scale: 1:1

Reminder: Please specify the "Pantone" of requested silkscreen printings or product colors. RGB or CMYK information is not appropriate for silkscreen / product color reference.

12.3 mm

10.2 mm

WisePad 2 Plus POWERED BY bbpos

4.1 mm

CE logo high: 5mm

Serial: XXXXXXXXXXXXXXXX
HW# WPP22000-02-002
FCC ID: 2AB7X-WISEPAD2PLUS
IMEI: XXXXXXXXXXXXXXXX

WPP22
Made in China

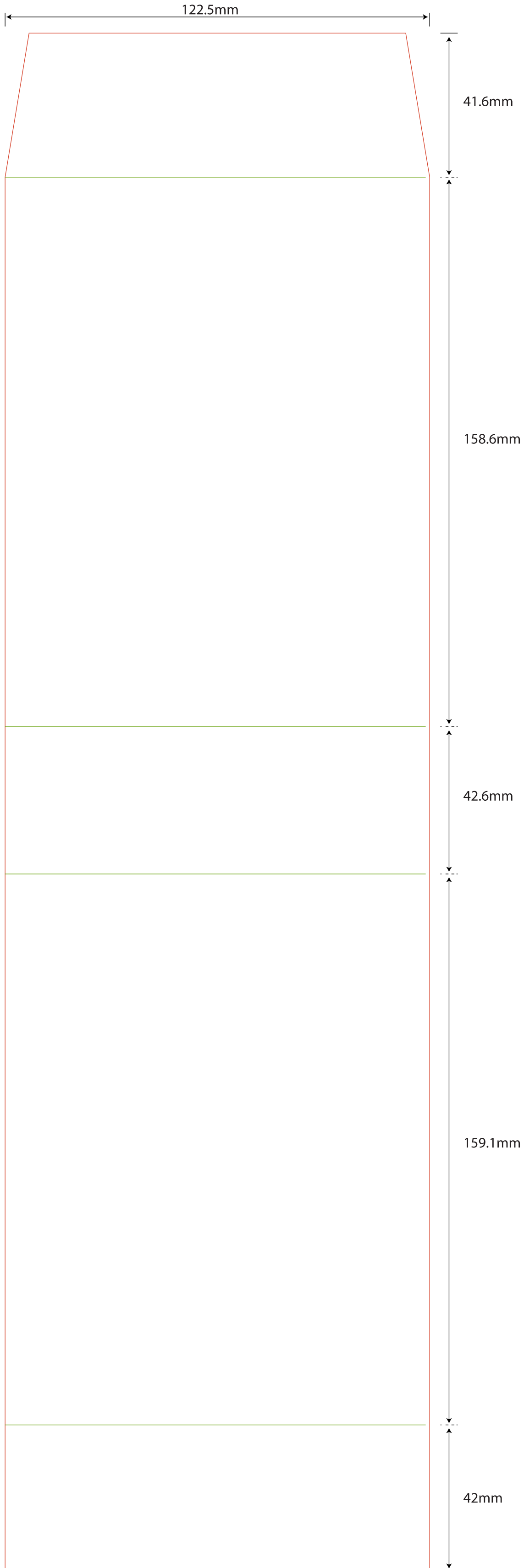
5.9 mm

10.4 mm



WisePad 2 Plus Packaging

Section 3 : Please create your artwork to this file for production reference.



WisePad 2 Plus Ship Mark

Section 4 : Please specify your shipping marks to this file for production reference.

Side Mark

Main Mark (Front)

Side Mark

Main Mark (Back)

--	--	--	--