

Appendix A:SAR System performance Check Plots
Table of contents
System Performance Check-D835-Body
System Performance Check-D1900-Body
System Performance Check-D2450-Body

Test Laboratory: CTI SAR Lab

Systemcheck 835-Body**DUT: Dipole 835 MHz D835V2; Type: D835V2; Serial: D835V2 - SN:4d193**

Communication System: UID 0, CW (0); Communication System Band: D835(835.0 MHz); Frequency: 835 MHz; Duty Cycle: 1:1

Medium parameters used: $f = 835$ MHz; $\sigma = 0.969$ S/m; $\epsilon_r = 53.476$; $\rho = 1000$ kg/m³

Phantom section: Flat Section

DASY Configuration:

- Probe: EX3DV4 - SN7328; ConvF(9.67, 9.67, 9.67); Calibrated: 2/19/2016;
- Sensor-Surface: 2mm (Mechanical Surface Detection), $z = 1.0, 31.0$
- Electronics: DAE4 Sn1458; Calibrated: 2/26/2016
- Phantom: Twin SAM V5.0; Type: QD000P40CD; Serial: 1875
- DASY52 52.8.8(1222); SEMCAD X 14.6.10(7331)

Configuration/d=15mm,Pin=25mW/Area Scan (8x12x1): Measurement grid: $dx=15$ mm, $dy=15$ mm

Maximum value of SAR (measured) = 2.68 W/kg

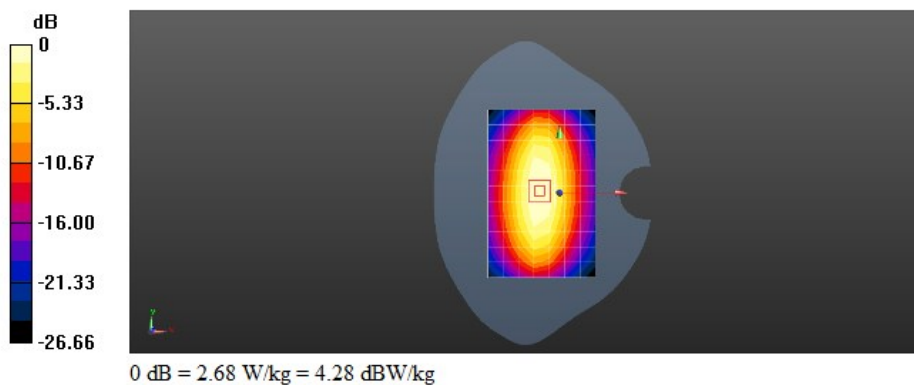
Configuration/d=15mm,Pin=25mW/Zoom Scan (5x5x7)/Cube 0: Measurement grid: $dx=8$ mm, $dy=8$ mm, $dz=5$ mm

Reference Value = 51.13 V/m; Power Drift = 0.04 dB

Peak SAR (extrapolated) = 3.45 W/kg

SAR(1 g) = 2.38 W/kg; SAR(10 g) = 1.58 W/kg

Maximum value of SAR (measured) = 2.99 W/kg



Test Laboratory: CTI SAR Lab

Systemcheck 1900-Body**DUT: Dipole 1900 MHz D1900V2; Type: D1900V2; Serial: D1900V2 - SN:5d198**

Communication System: UID 0, CW (0); Communication System Band: D1900 (1900.0 MHz); Frequency: 1900 MHz; Duty Cycle: 1:1

Medium parameters used: $f = 1900$ MHz; $\sigma = 1.495$ S/m; $\epsilon_r = 50.999$; $\rho = 1000$ kg/m³

Phantom section: Flat Section

DASY Configuration:

- Probe: EX3DV4 - SN7328; ConvF(7.8, 7.8, 7.8); Calibrated: 2/19/2016;
- Sensor-Surface: 2mm (Mechanical Surface Detection), $z = 1.0, 31.0$
- Electronics: DAE4 Sn1458; Calibrated: 2/26/2016
- Phantom: Twin SAM V5.0; Type: QD000P40CD; Serial: 1875
- DASY52 52.8.8(1222); SEMCAD X 14.6.10(7331)

Configuration/d=10mm,Pin=25mW/Area Scan (8x8x1): Measurement grid: $dx=15$ mm, $dy=15$ mm

Maximum value of SAR (measured) = 10.5 W/kg

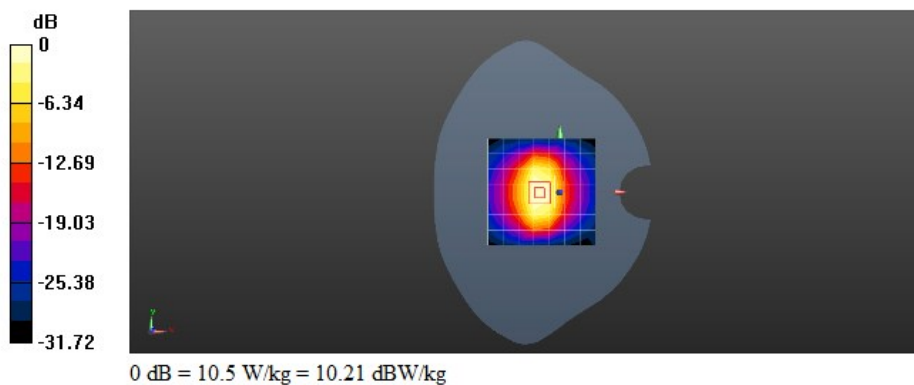
Configuration/d=10mm,Pin=25mW/Zoom Scan (5x5x7)/Cube 0: Measurement grid: $dx=8$ mm, $dy=8$ mm, $dz=5$ mm

Reference Value = 85.05 V/m; Power Drift = 0.14 dB

Peak SAR (extrapolated) = 17.9 W/kg

SAR(1 g) = 10.2 W/kg; SAR(10 g) = 5.36 W/kg

Maximum value of SAR (measured) = 14.3 W/kg



Test Laboratory: CTI SAR Lab

Systemcheck 2450-Body**DUT: Dipole 2450 MHz D2450V2; Type: D2450V2; Serial: D2450V2 - SN:959**

Communication System: UID 0, CW (0); Communication System Band: D2450 (2450.0 MHz); Frequency: 2450 MHz; Duty Cycle: 1:1

Medium parameters used: $f = 2450$ MHz; $\sigma = 1.978$ S/m; $\epsilon_r = 51.174$; $\rho = 1000$ kg/m³

Phantom section: Flat Section

DASY Configuration:

- Probe: EX3DV4 - SN7328; ConvF(7.45, 7.45, 7.45); Calibrated: 2/19/2016;
- Sensor-Surface: 2mm (Mechanical Surface Detection), $z = 1.0, 31.0$
- Electronics: DAE4 Sn1458; Calibrated: 2/26/2016
- Phantom: Twin SAM V5.0; Type: QD000P40CD; Serial: 1875
- DASY52 52.8.8(1222); SEMCAD X 14.6.10(7331)

Configuration/d=10mm,Pin=25mW/Area Scan (10x10x1): Measurement grid: $dx=12$ mm, $dy=12$ mm

Maximum value of SAR (measured) = 14.7 W/kg

Configuration/d=10mm,Pin=25mW/Zoom Scan (7x7x7)/Cube 0: Measurement grid: $dx=5$ mm, $dy=5$ mm, $dz=5$ mm

Reference Value = 82.90 V/m; Power Drift = 0.10 dB

Peak SAR (extrapolated) = 24.0 W/kg

SAR(1 g) = 12.2 W/kg; SAR(10 g) = 5.75 W/kg

Maximum value of SAR (measured) = 18.3 W/kg

