

Report Number:EED32J00095407

<b>Appendix A:SAR System performance Check Plots</b>
<b>Table of contents</b>
<b>System Performance Check-D835-Body</b>
<b>System Performance Check-D1900-Body</b>
<b>System Performance Check-D2450-Body</b>

Test Laboratory: CTI SAR Lab

**Systemcheck 835-Body****DUT: Dipole 835 MHz D835V2; Type: D835V2; Serial: D835V2 - SN:4d193**

Communication System: UID 0, CW (0); Communication System Band: D835(835.0 MHz); Frequency: 835 MHz;Duty Cycle: 1:1

Medium parameters used:  $f = 835$  MHz;  $\sigma = 0.963$  S/m;  $\epsilon_r = 54.373$ ;  $\rho = 1000$  kg/m<sup>3</sup>

Phantom section: Flat Section

## DASY Configuration:

- Probe: EX3DV4 - SN7328; ConvF(10.19, 10.19, 10.19); Calibrated: 2/28/2017;
- Sensor-Surface: 2mm (Mechanical Surface Detection),  $z = 1.0, 31.0$
- Electronics: DAE4 Sn1458; Calibrated: 2/22/2017
- Phantom: Twin SAM V5.0; Type: QD000P40CD; Serial: 1875
- DASY52 52.8.8(1222); SEMCAD X 14.6.10(7331)

**Configuration/d=15mm,Pin=100mW/Area Scan (8x12x1):** Measurement grid:  $dx=15$ mm,  $dy=15$ mm

Maximum value of SAR (measured) = 0.988 W/kg

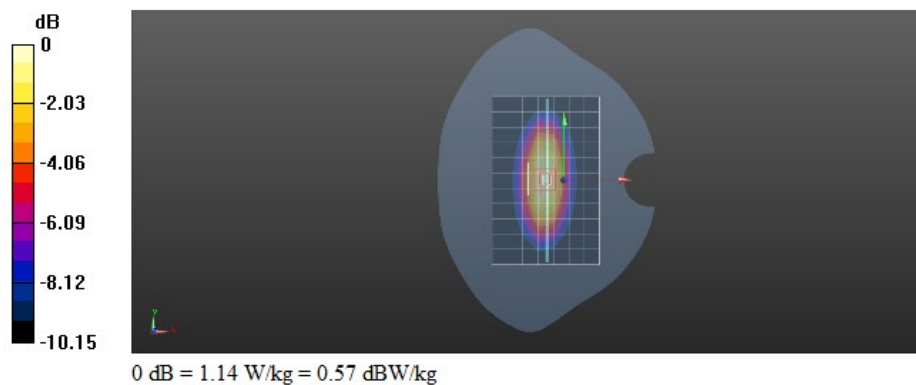
**Configuration/d=15mm,Pin=100mW/Zoom Scan (5x5x7)/Cube 0:** Measurement grid:  $dx=8$ mm,  $dy=8$ mm,  $dz=5$ mm

Reference Value = 31.59 V/m; Power Drift = 0.03 dB

Peak SAR (extrapolated) = 1.34 W/kg

**SAR(1 g) = 0.906 W/kg; SAR(10 g) = 0.601 W/kg**

Maximum value of SAR (measured) = 1.14 W/kg



Test Laboratory: CTI SAR Lab

**Systemcheck 1900-Body****DUT: Dipole 1900 MHz D1900V2; Type: D1900V2; Serial: D1900V2 - SN:5d198**

Communication System: UID 0, CW (0); Communication System Band: D1900 (1900.0 MHz); Frequency: 1900 MHz; Duty Cycle: 1:1

Medium parameters used:  $f = 1900$  MHz;  $\sigma = 1.518$  S/m;  $\epsilon_r = 51.257$ ;  $\rho = 1000$  kg/m<sup>3</sup>

Phantom section: Flat Section

## DASY Configuration:

- Probe: EX3DV4 - SN7328; ConvF(8.02, 8.02, 8.02); Calibrated: 2/28/2017;
- Sensor-Surface: 2mm (Mechanical Surface Detection),  $z = 1.0, 31.0$
- Electronics: DAE4 Sn1458; Calibrated: 2/22/2017
- Phantom: Twin SAM V5.0; Type: QD000P40CD; Serial: 1875
- DASY52 52.8.8(1222); SEMCAD X 14.6.10(7331)

**Configuration/d=10mm,Pin=100mW/Area Scan (8x8x1):** Measurement grid:  $dx=15$ mm,  $dy=15$ mm

Maximum value of SAR (measured) = 3.89 W/kg

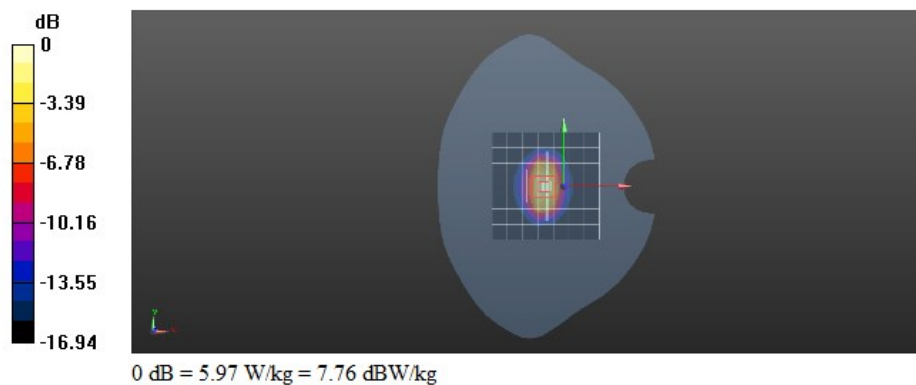
**Configuration/d=10mm,Pin=100mW/Zoom Scan (5x5x7)/Cube 0:** Measurement grid:  $dx=8$ mm,  $dy=8$ mm,  $dz=5$ mm

Reference Value = 55.56 V/m; Power Drift = 0.09 dB

Peak SAR (extrapolated) = 7.41 W/kg

**SAR(1 g) = 4.22 W/kg; SAR(10 g) = 2.23 W/kg**

Maximum value of SAR (measured) = 5.97 W/kg



Test Laboratory: CTI SAR Lab

**Systemcheck 2450-Body****DUT: Dipole 2450 MHz D2450V2; Type: D2450V2; Serial: D2450V2 - SN:959**

Communication System: UID 0, CW (0); Communication System Band: D2450 (2450.0 MHz); Frequency: 2450 MHz; Duty Cycle: 1:1

Medium parameters used:  $f = 2450$  MHz;  $\sigma = 1.958$  S/m;  $\epsilon_r = 51.68$ ;  $\rho = 1000$  kg/m<sup>3</sup>

Phantom section: Flat Section

## DASY Configuration:

- Probe: EX3DV4 - SN7328; ConvF(7.61, 7.61, 7.61); Calibrated: 2/28/2017;
- Sensor-Surface: 2mm (Mechanical Surface Detection),  $z = 1.0, 31.0$
- Electronics: DAE4 Sn1458; Calibrated: 2/22/2017
- Phantom: Twin SAM V5.0; Type: QD000P40CD; Serial: 1875
- DASY52 52.8.8(1222); SEMCAD X 14.6.10(7331)

**Configuration/d=10mm,Pin=100mW/Area Scan (10x10x1):** Measurement grid:  $dx=12$ mm,  $dy=12$ mm

Maximum value of SAR (measured) = 5.96 W/kg

**Configuration/d=10mm,Pin=100mW/Zoom Scan (7x7x7)/Cube 0:** Measurement grid:  $dx=5$ mm,  $dy=5$ mm,  $dz=5$ mm

Reference Value = 54.41 V/m; Power Drift = 0.06 dB

Peak SAR (extrapolated) = 10.2 W/kg

**SAR(1 g) = 5.09 W/kg; SAR(10 g) = 2.4 W/kg**

Maximum value of SAR (measured) = 7.67 W/kg

