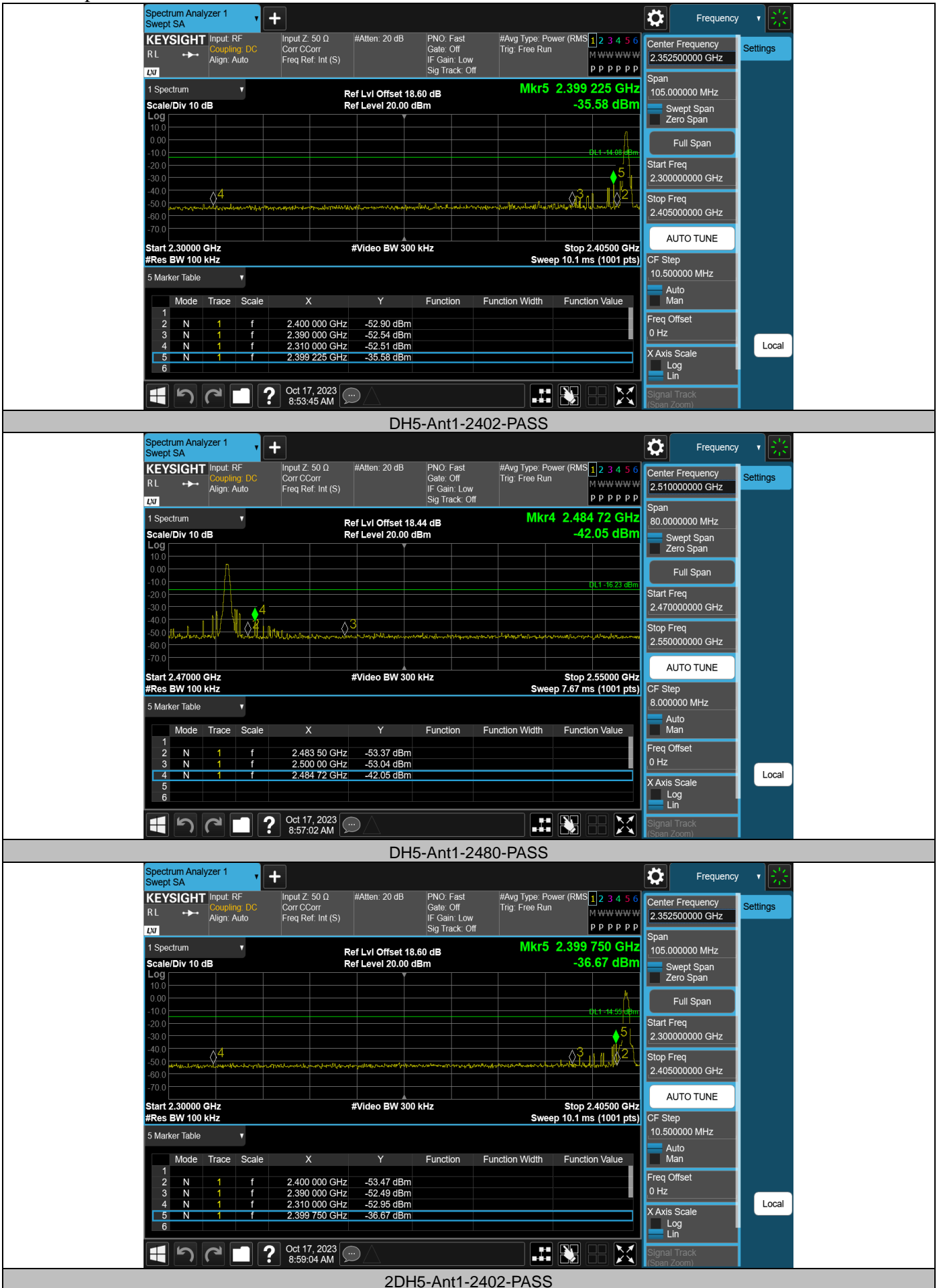
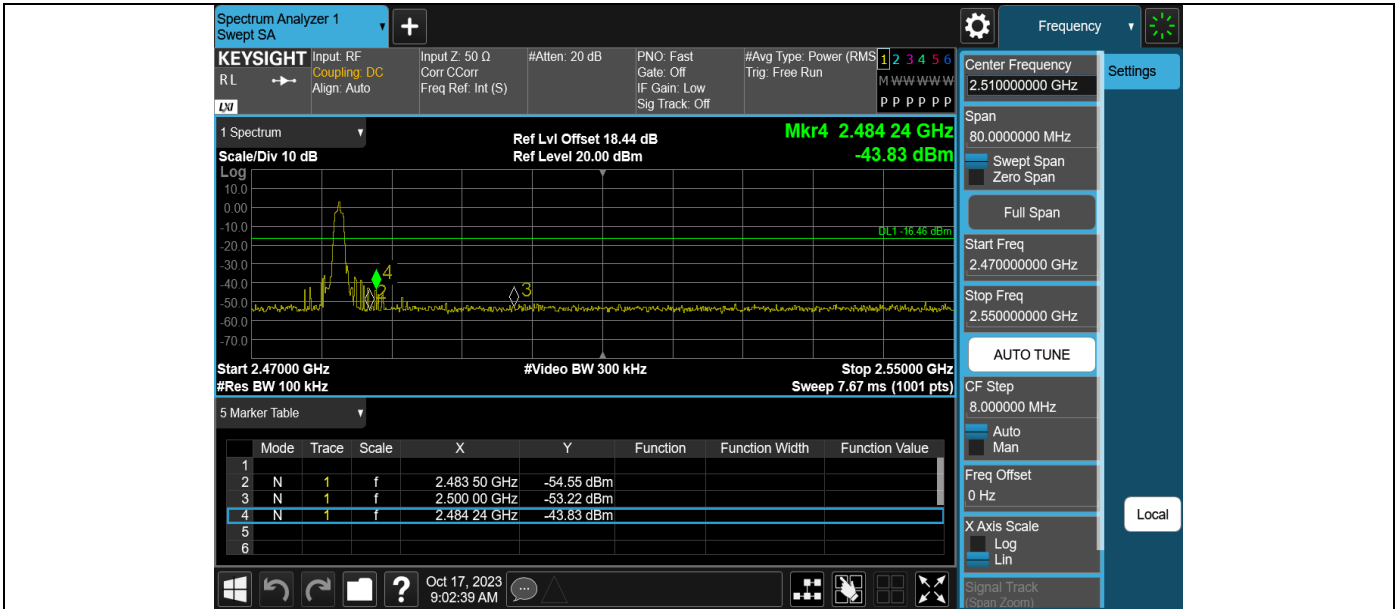


Appendix G: Band edge measurements  
 Test Result

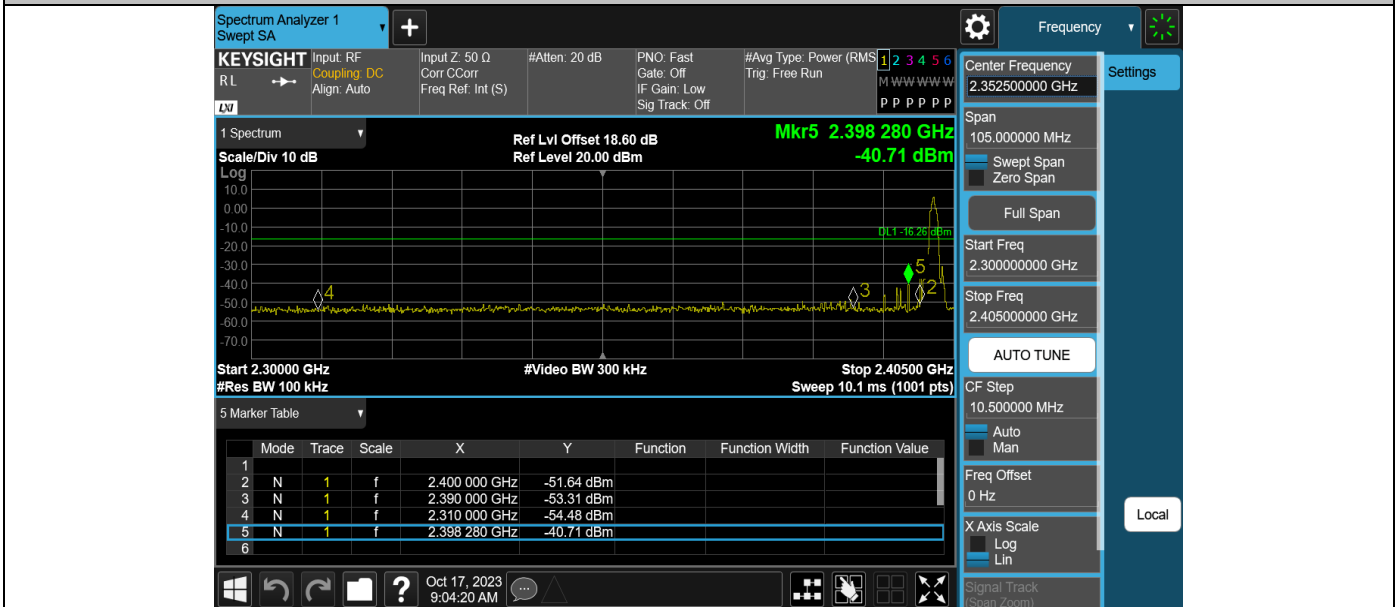
TestMode	Antenna	ChName	Frequency[MHz]	RefLevel [dBm]	Result [dBm]	Limit [dBm]	Verdict
DH5	Ant1	Low	2402	5.92	-35.58	≤-14.08	PASS
DH5	Ant1	High	2480	3.77	-42.05	≤-16.23	PASS
2DH5	Ant1	Low	2402	5.45	-36.67	≤-14.55	PASS
2DH5	Ant1	High	2480	3.54	-43.83	≤-16.46	PASS
3DH5	Ant1	Low	2402	3.74	-40.71	≤-16.26	PASS
3DH5	Ant1	High	2480	3.61	-44.12	≤-16.39	PASS
DH5	Ant1	High	Hop_2480	3.84	-40.36	≤-16.16	PASS
DH5	Ant1	Low	Hop_2402	5.47	-36.23	≤-14.53	PASS
2DH5	Ant1	High	Hop_2480	-0.94	-50.1	≤-20.94	PASS
2DH5	Ant1	Low	Hop_2402	0.09	-44.94	≤-19.91	PASS
3DH5	Ant1	High	Hop_2480	0.73	-42.49	≤-19.27	PASS
3DH5	Ant1	Low	Hop_2402	4.84	-38.6	≤-15.16	PASS

Test Graphs

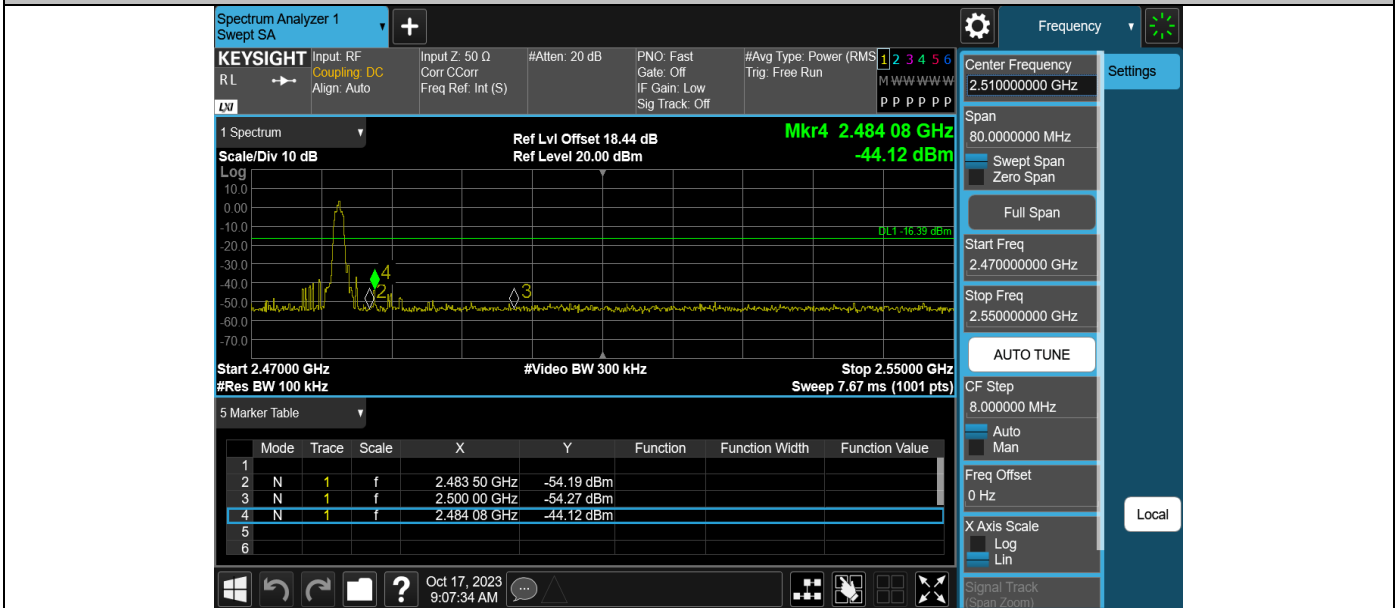




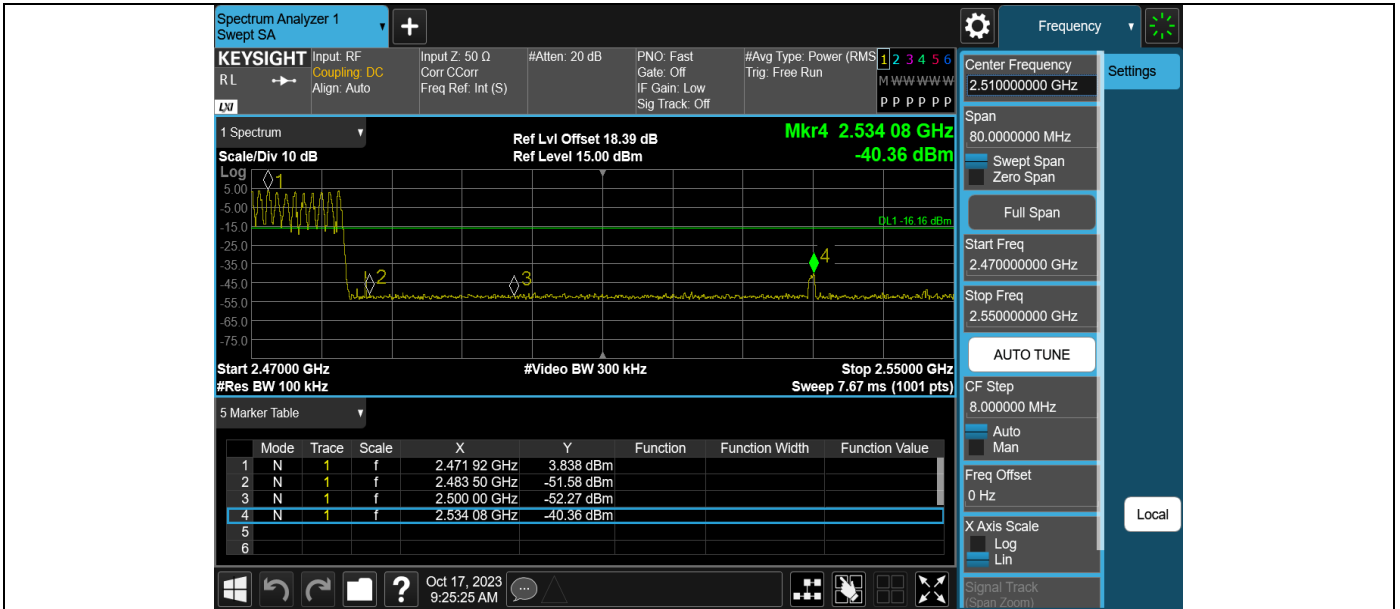
2DH5-Ant1-2480-PASS



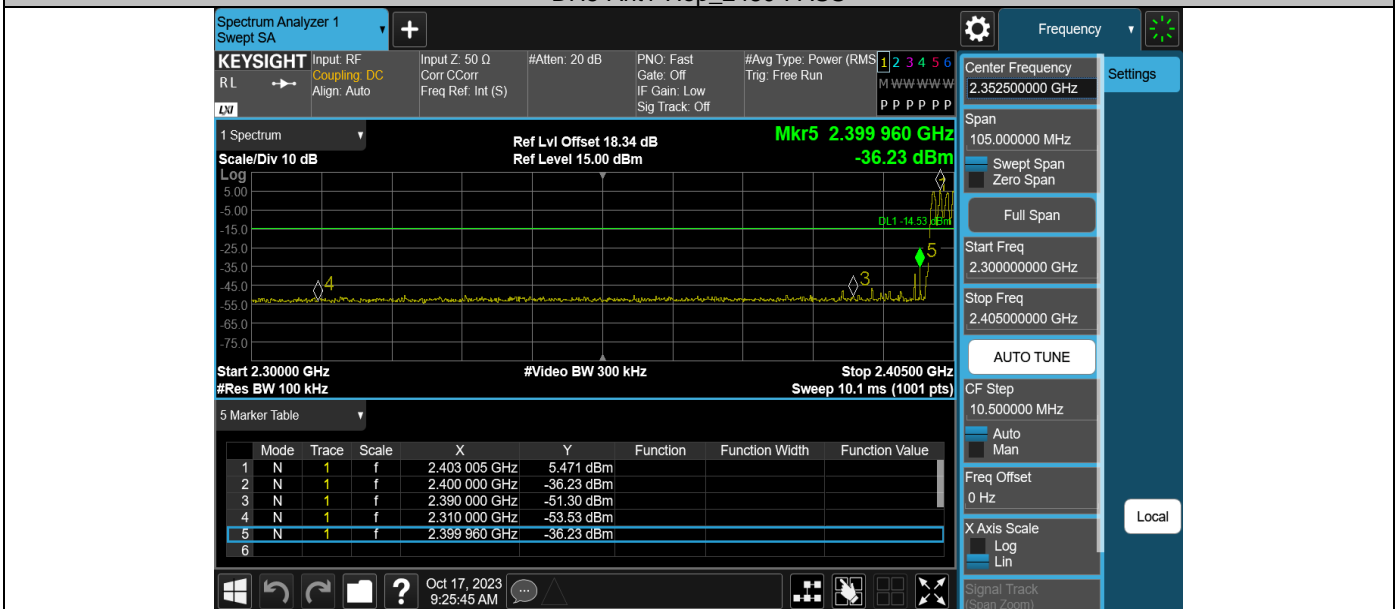
3DH5-Ant1-2402-PASS



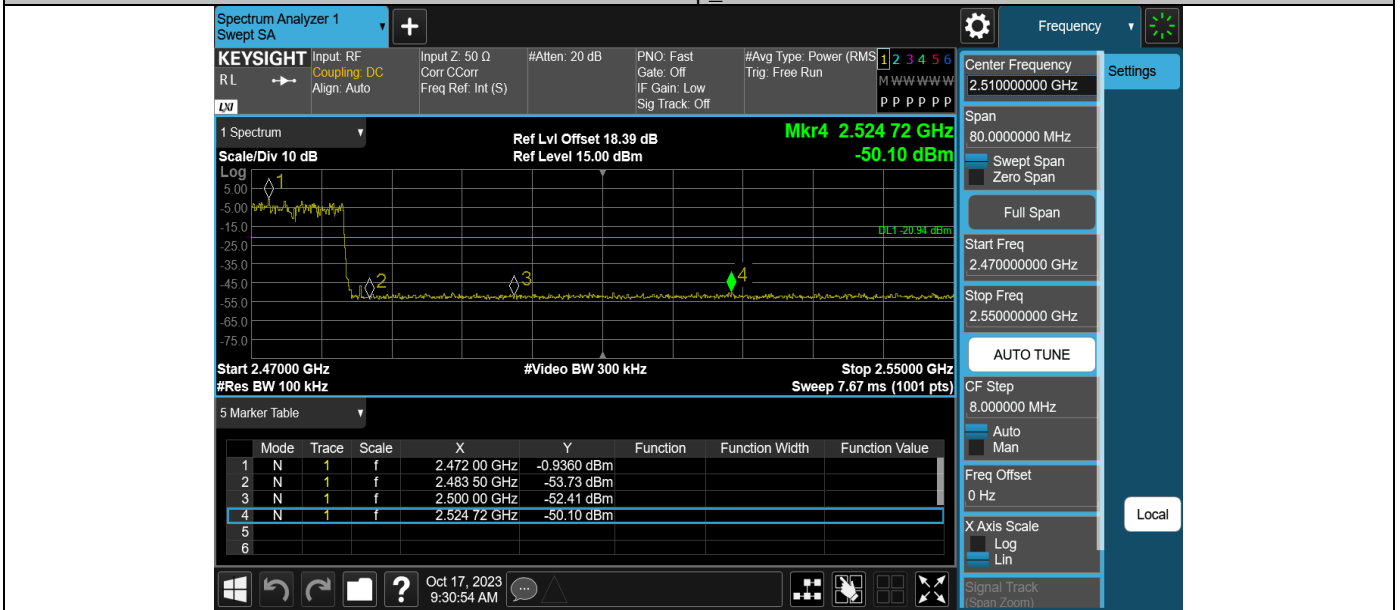
3DH5-Ant1-2480-PASS



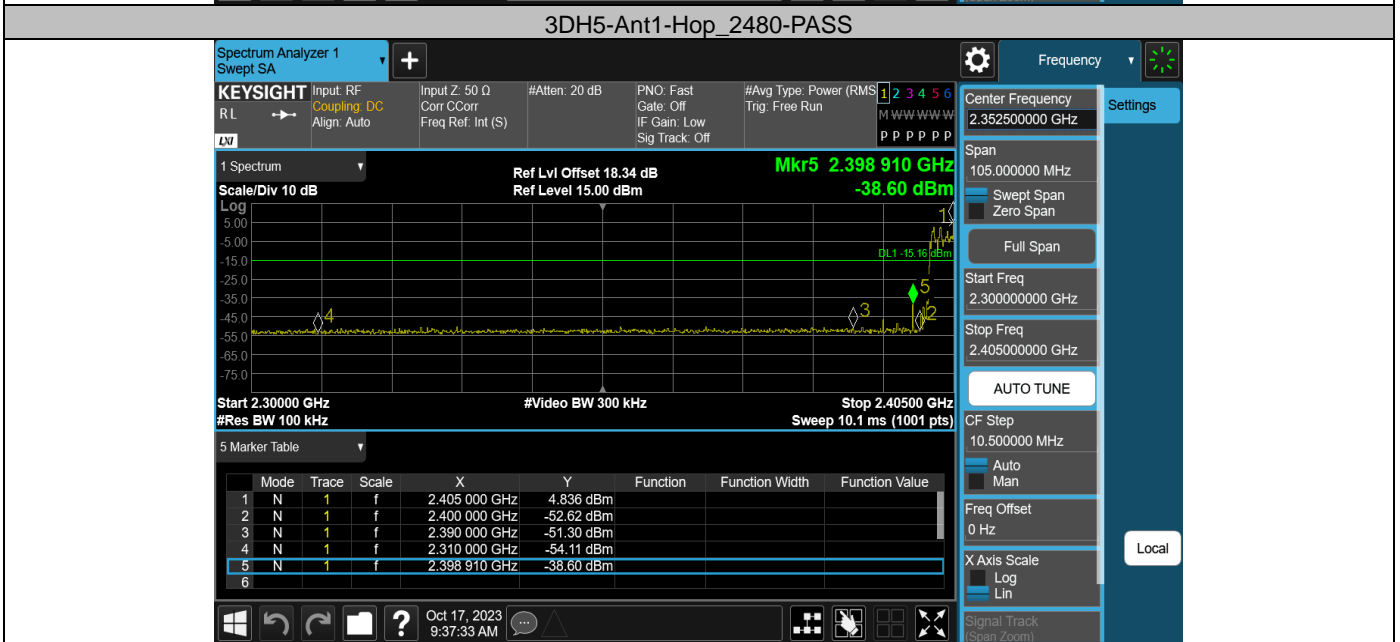
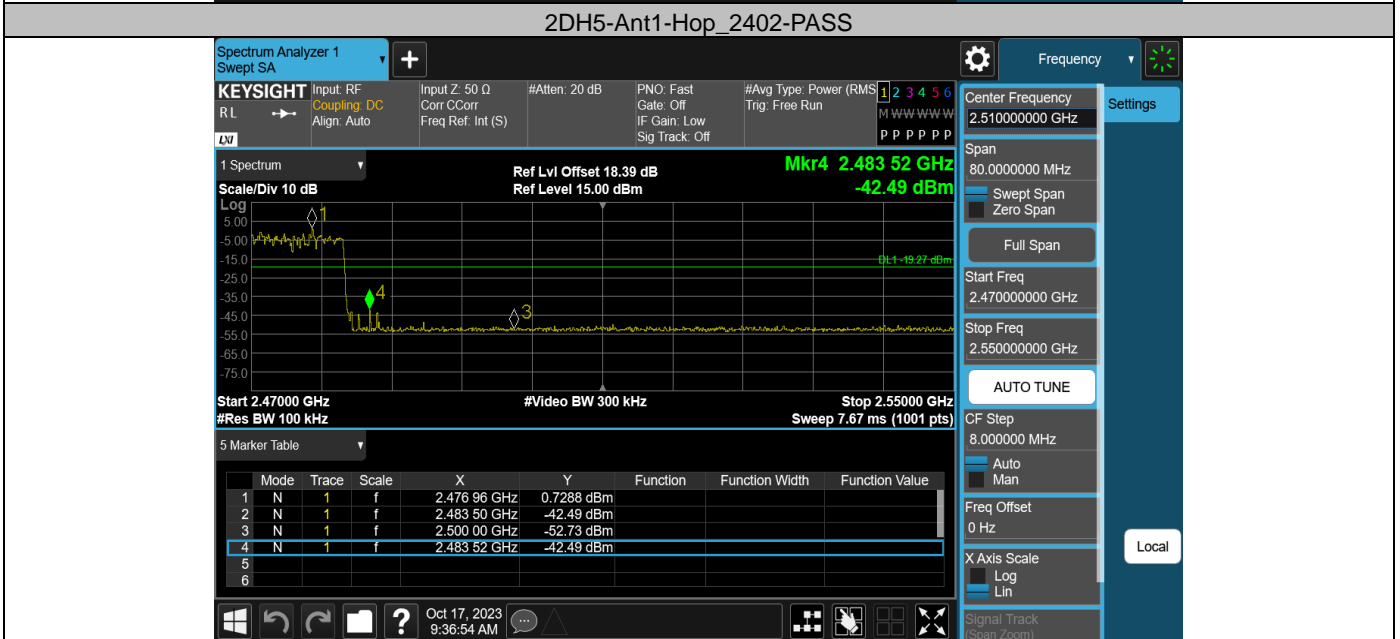
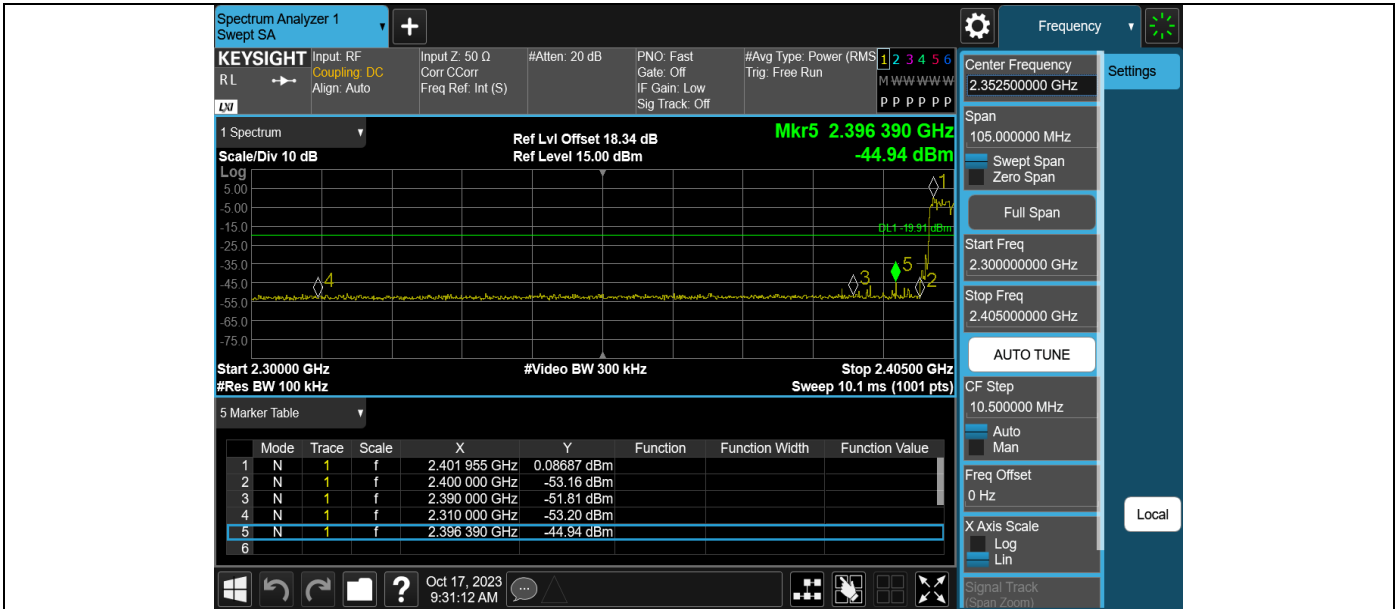
DH5-Ant1-Hop\_2480-PASS



DH5-Ant1-Hop\_2402-PASS



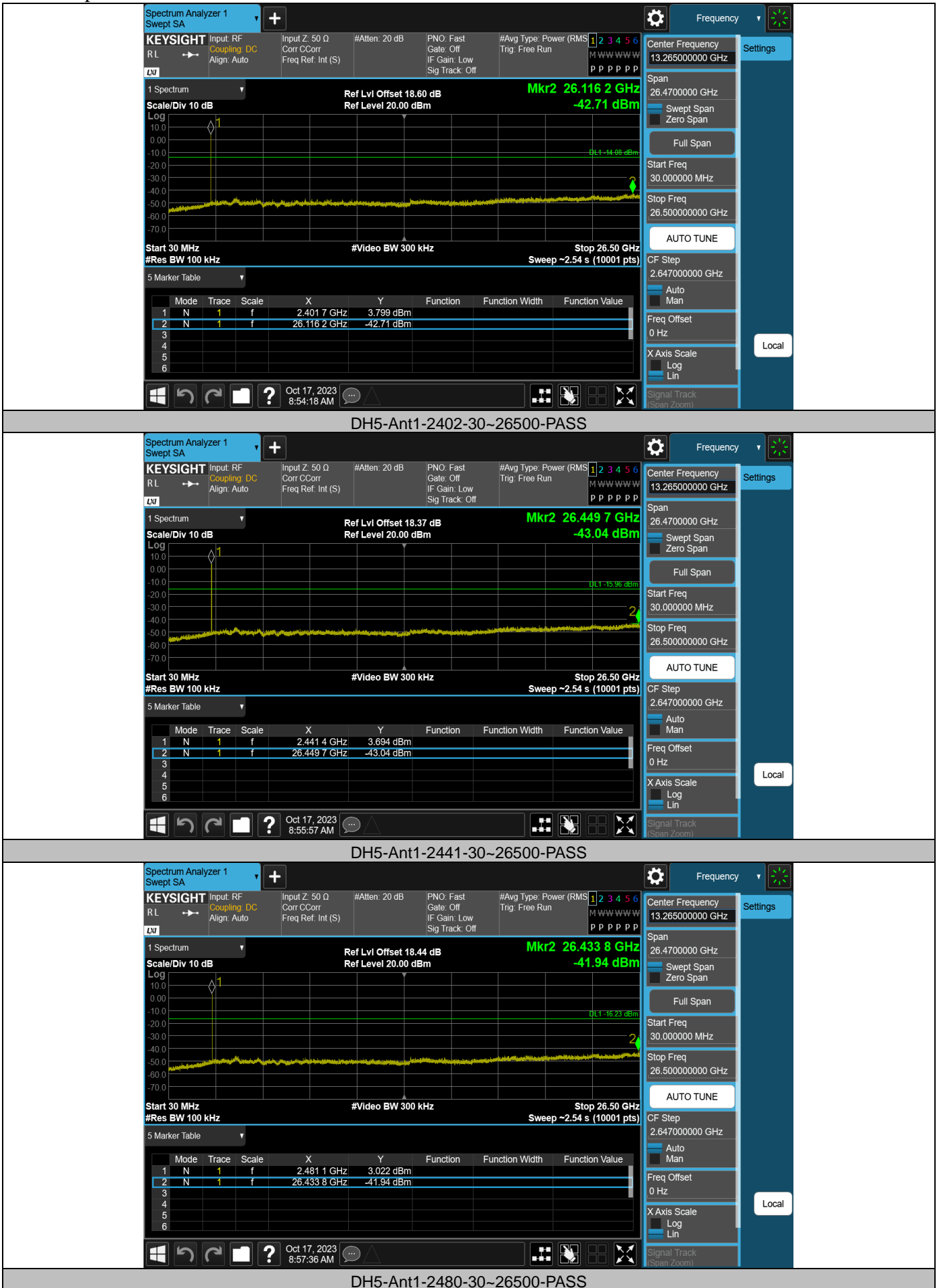
2DH5-Ant1-Hop\_2480-PASS

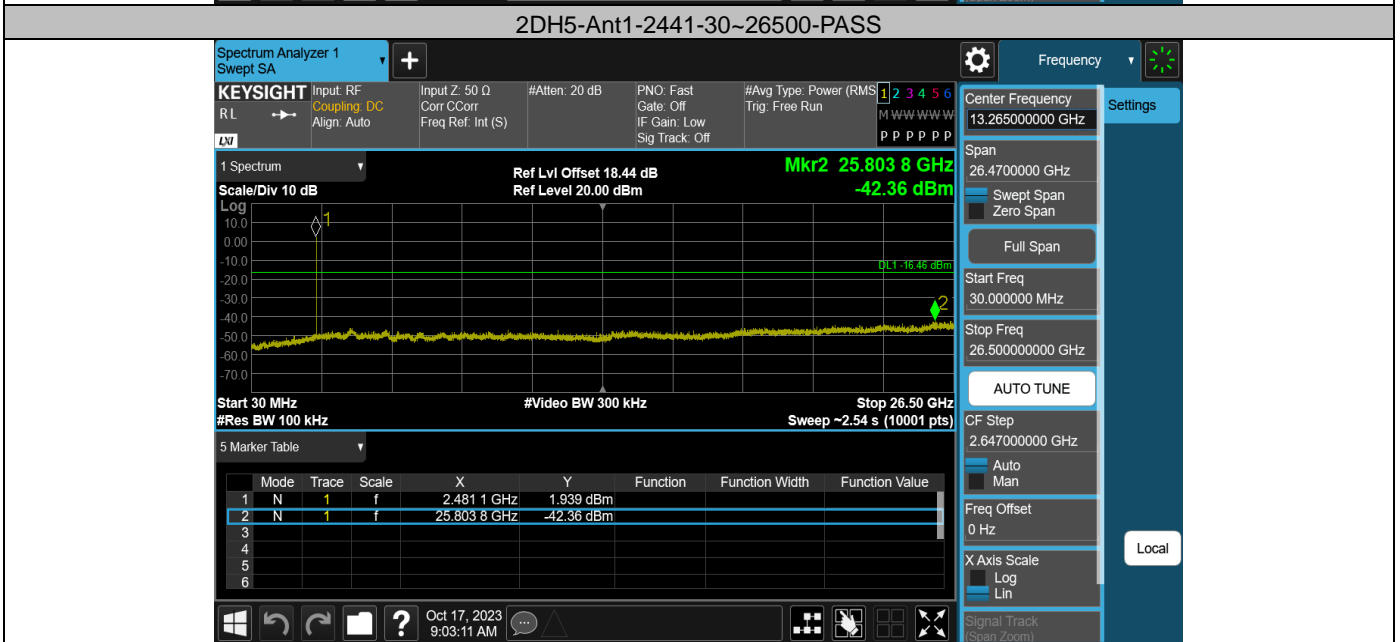
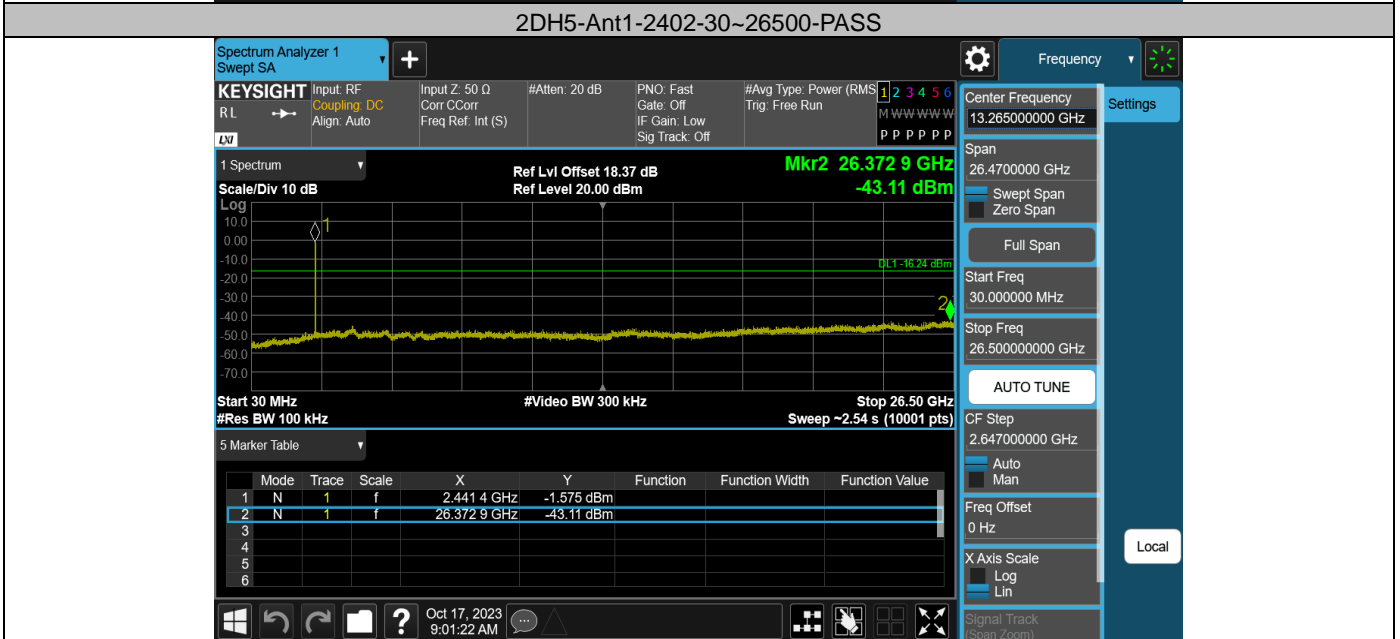
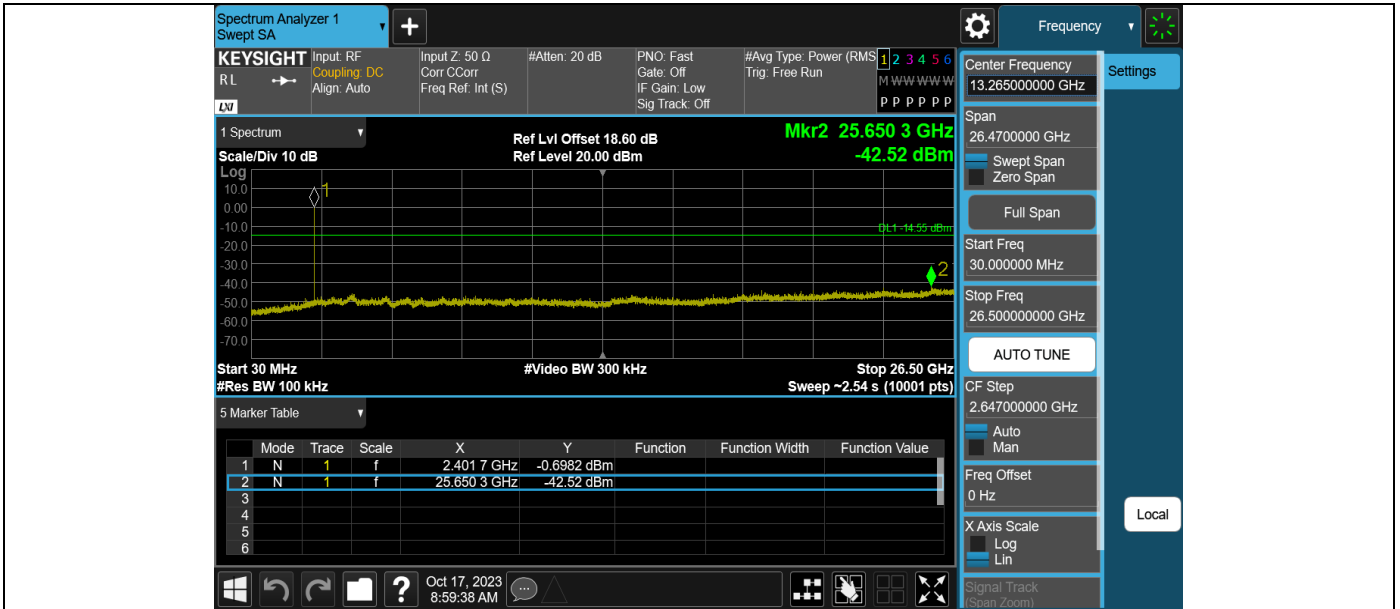


## Appendix H: Conducted Spurious Emission Test Result

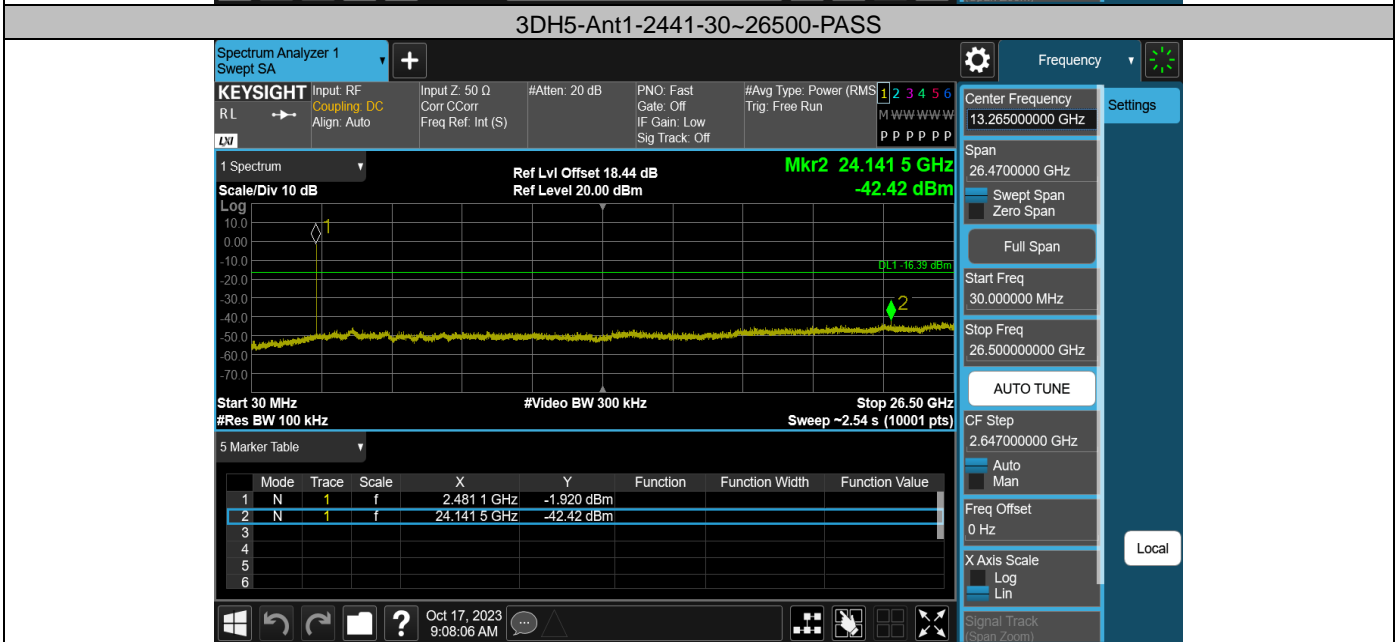
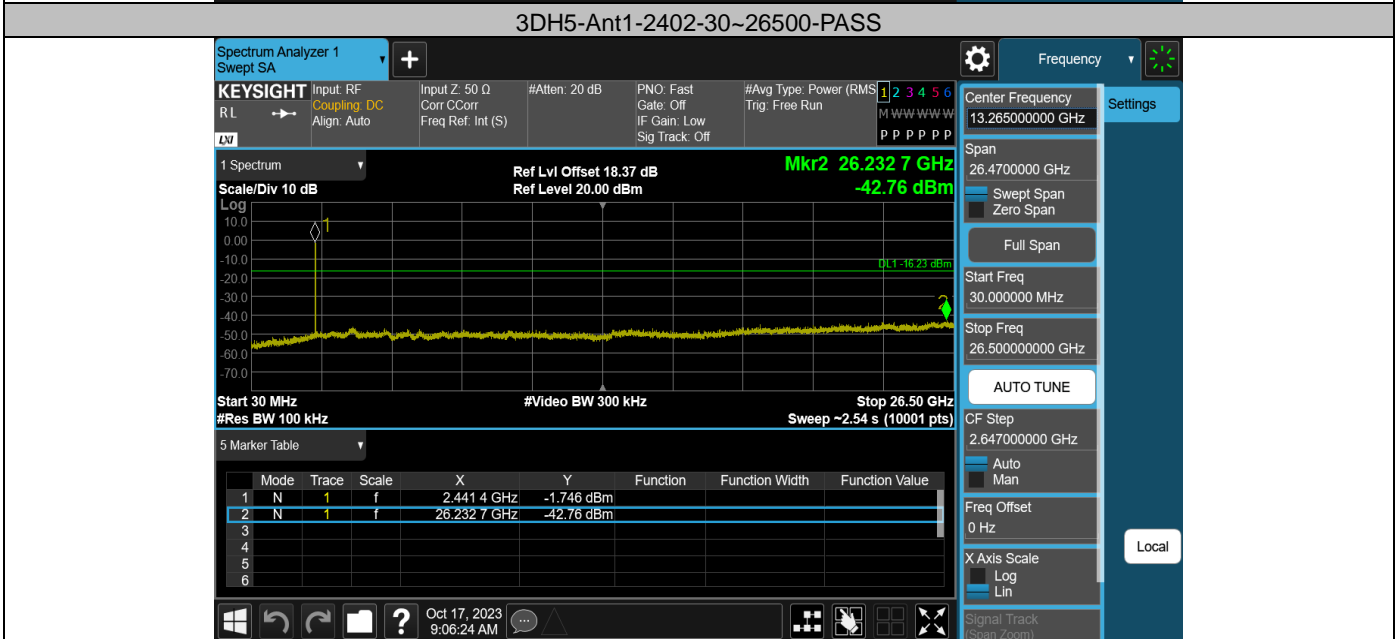
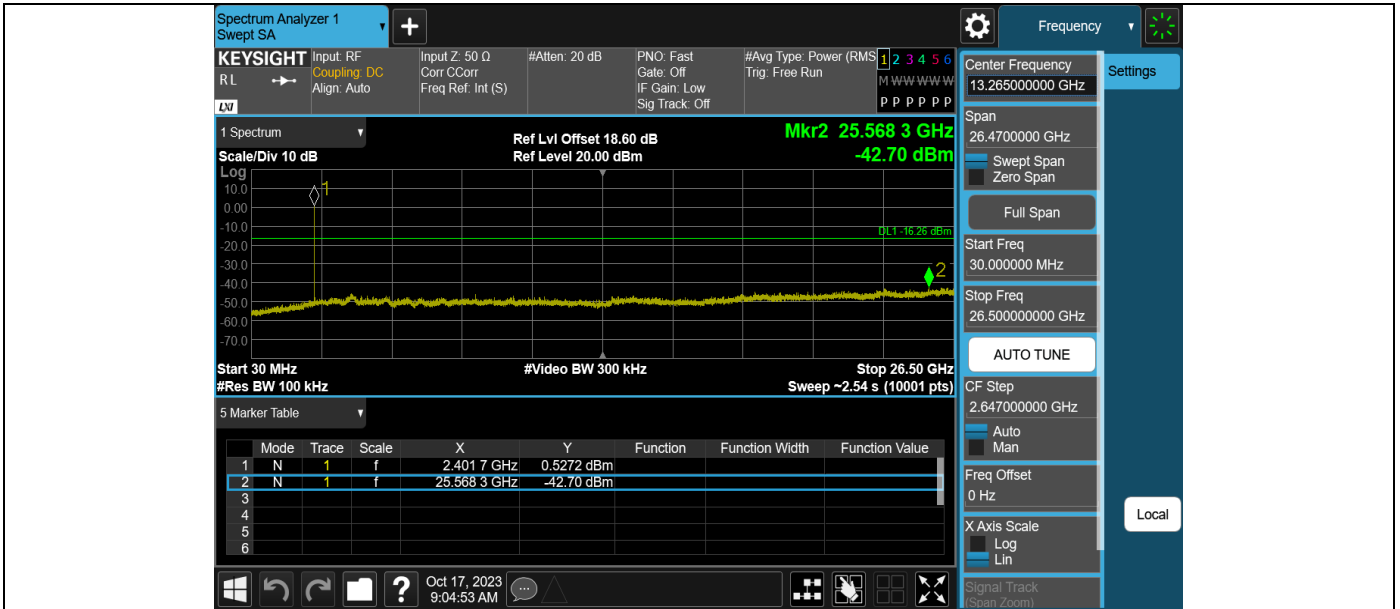
TestMode	Antenna	Frequency[MHz]	FreqRange [MHz]	RefLevel [dBm]	Result [dBm]	Limit [dBm]	Verdict
DH5	Ant1	2402	30~26500	5.92	-42.71	≤-14.08	PASS
DH5	Ant1	2441	30~26500	4.04	-43.04	≤-15.96	PASS
DH5	Ant1	2480	30~26500	3.77	-41.94	≤-16.23	PASS
2DH5	Ant1	2402	30~26500	5.45	-42.52	≤-14.55	PASS
2DH5	Ant1	2441	30~26500	3.76	-43.11	≤-16.24	PASS
2DH5	Ant1	2480	30~26500	3.54	-42.36	≤-16.46	PASS
3DH5	Ant1	2402	30~26500	3.74	-42.7	≤-16.26	PASS
3DH5	Ant1	2441	30~26500	3.77	-42.76	≤-16.23	PASS
3DH5	Ant1	2480	30~26500	3.61	-42.42	≤-16.39	PASS

Test Graphs









Appendix I: Reference level measurement  
 Test Result

TestMode	Antenna	Freq(MHz)	Max.Point[MHz]	Result[dBm]
DH5	Ant1	2402	2401.99	5.92
DH5	Ant1	2441	2441.03	4.03
DH5	Ant1	2480	2480.16	3.77
2DH5	Ant1	2402	2402.06	5.45
2DH5	Ant1	2441	2441.06	3.76
2DH5	Ant1	2480	2480.16	3.54
3DH5	Ant1	2402	2402.08	3.74
3DH5	Ant1	2441	2441.06	3.77
3DH5	Ant1	2480	2480.14	3.61

Test Graphs



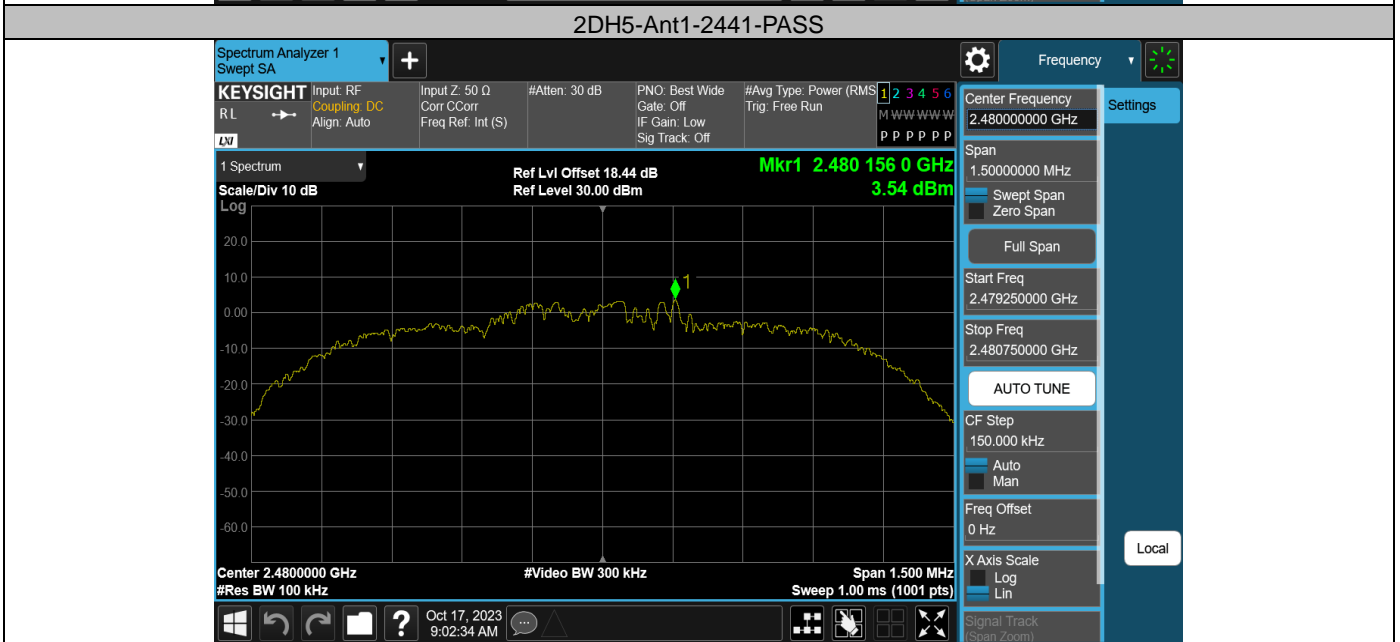
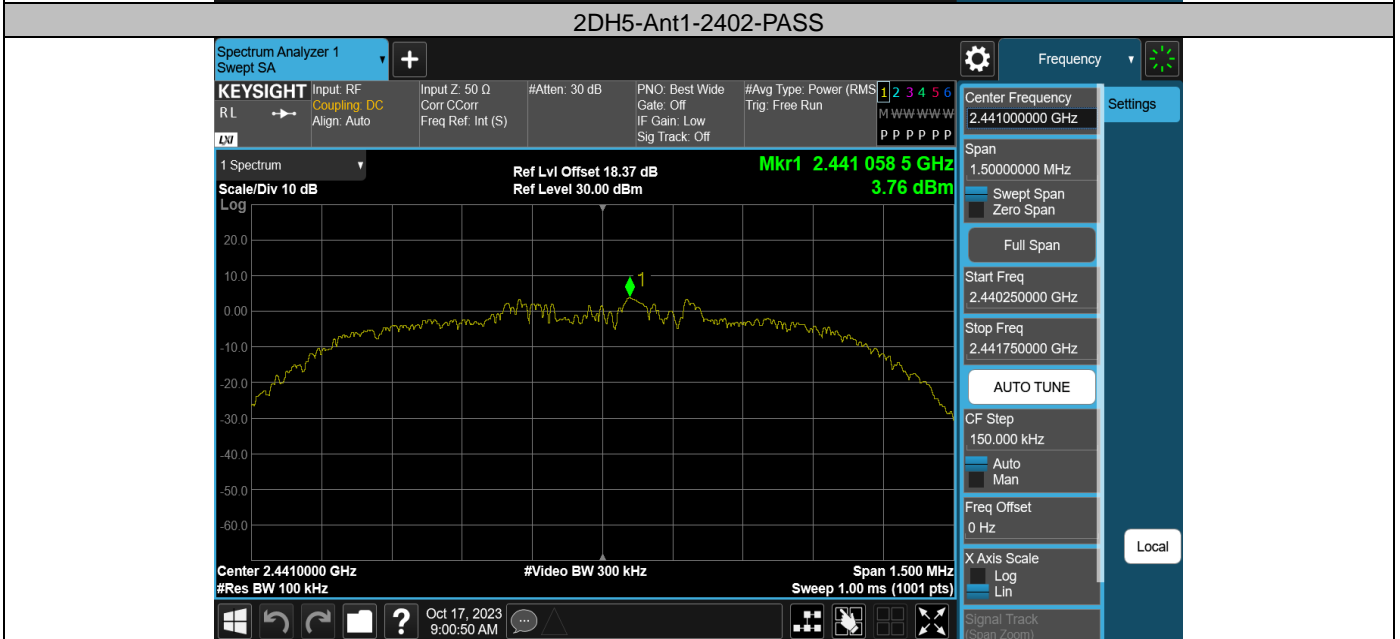
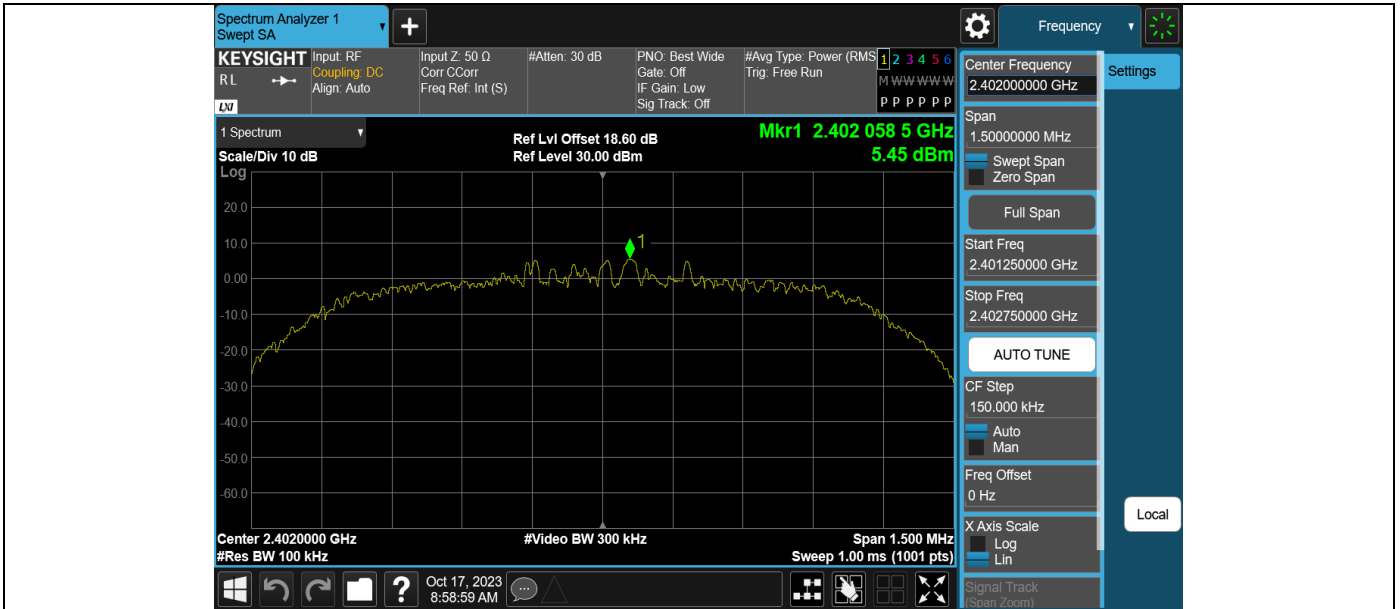
DH5-Ant1-2402-PASS

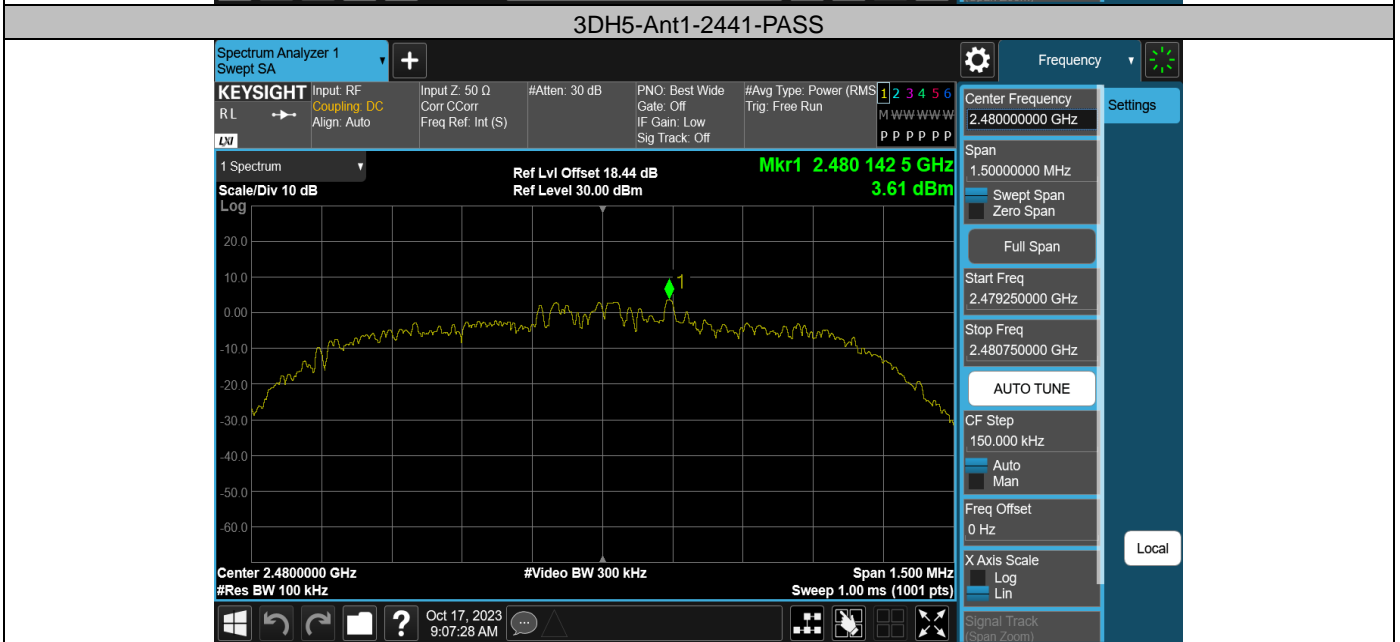
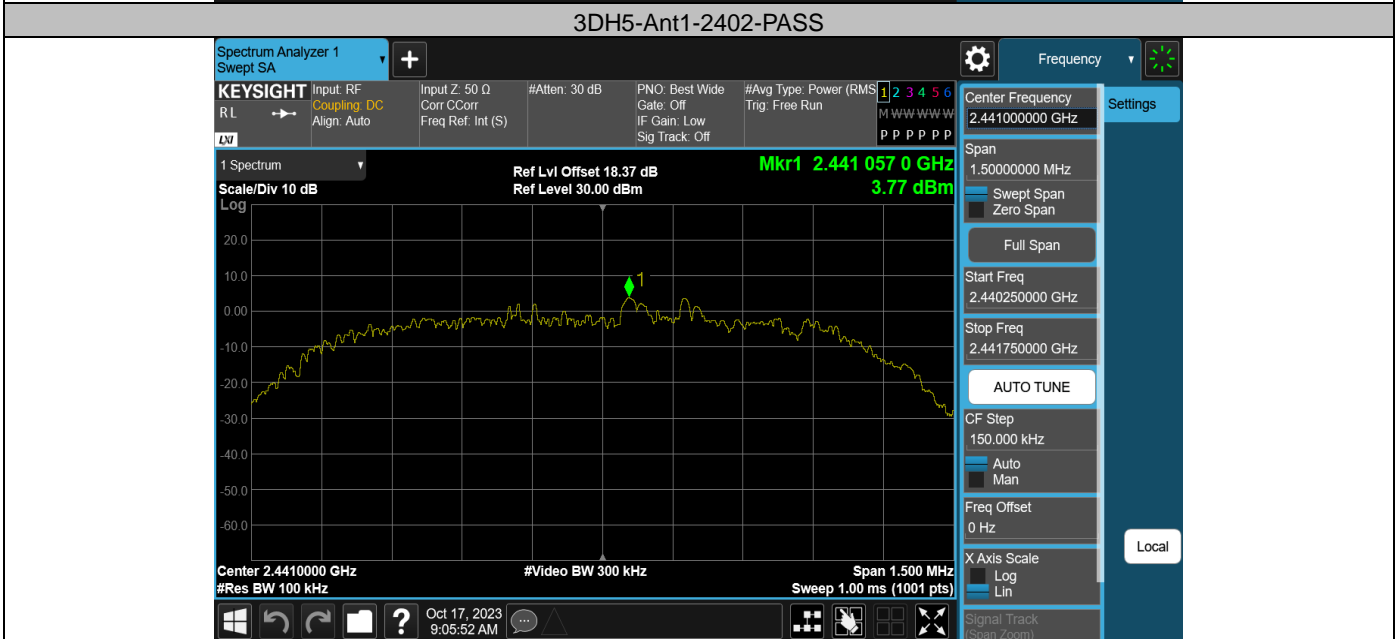
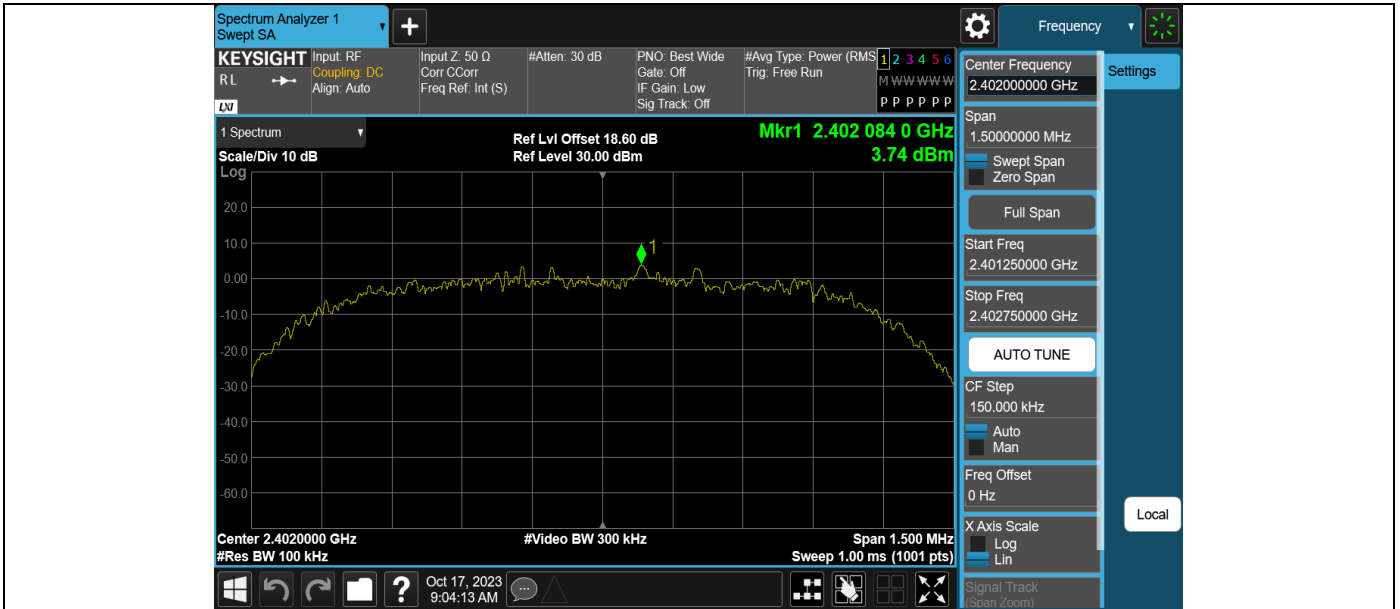


DH5-Ant1-2441-PASS



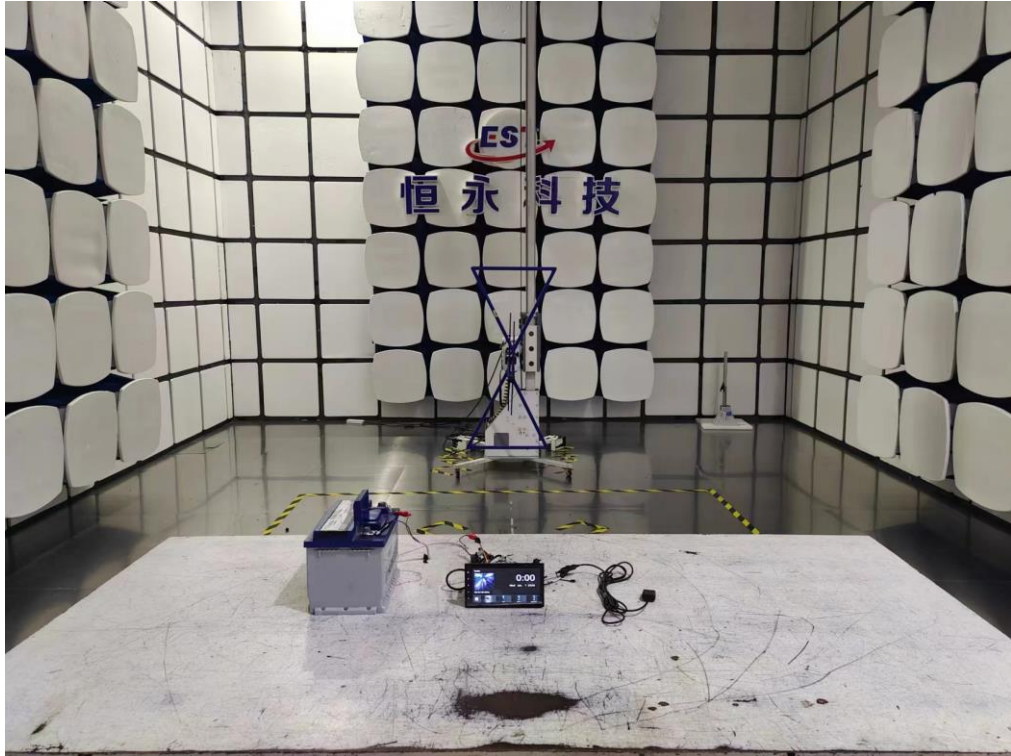
DH5-Ant1-2480-PASS



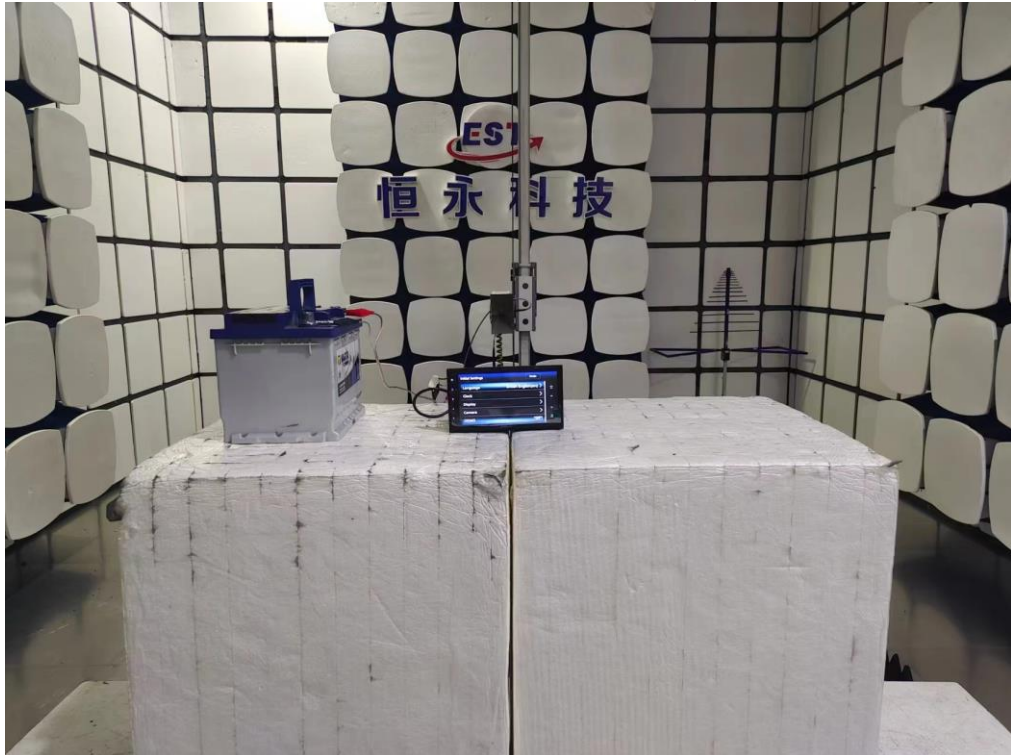


### 13. TEST SETUP PHOTO

**Radiated Test (Below 1GHz)**



**Radiated Test (Above 1GHz)**



# 14. EUT PHOTO

External Photos  
M/N: DMX4710S



**External Photos**  
M/N: DMX4710S





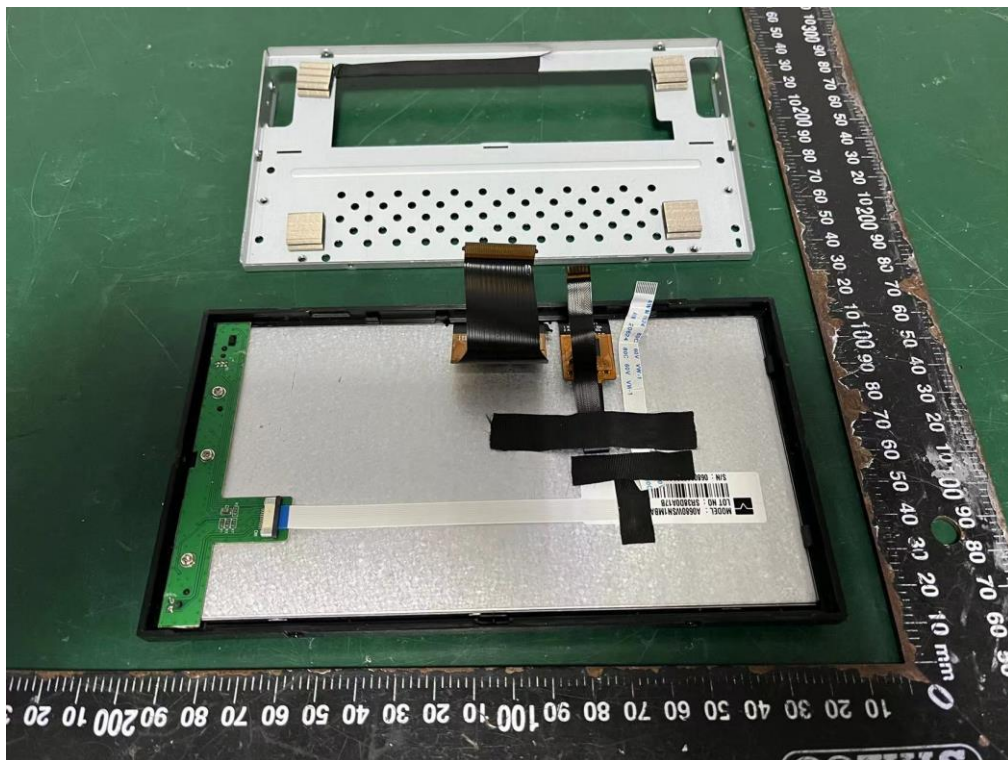
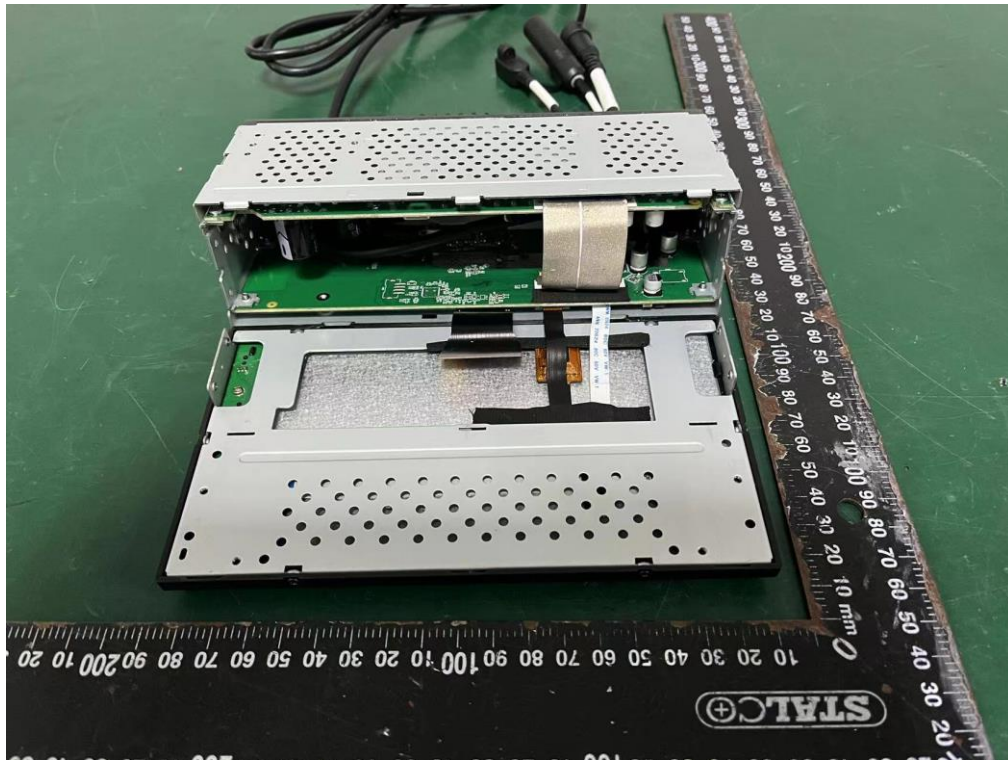
**External Photos**  
M/N: DMX4710S



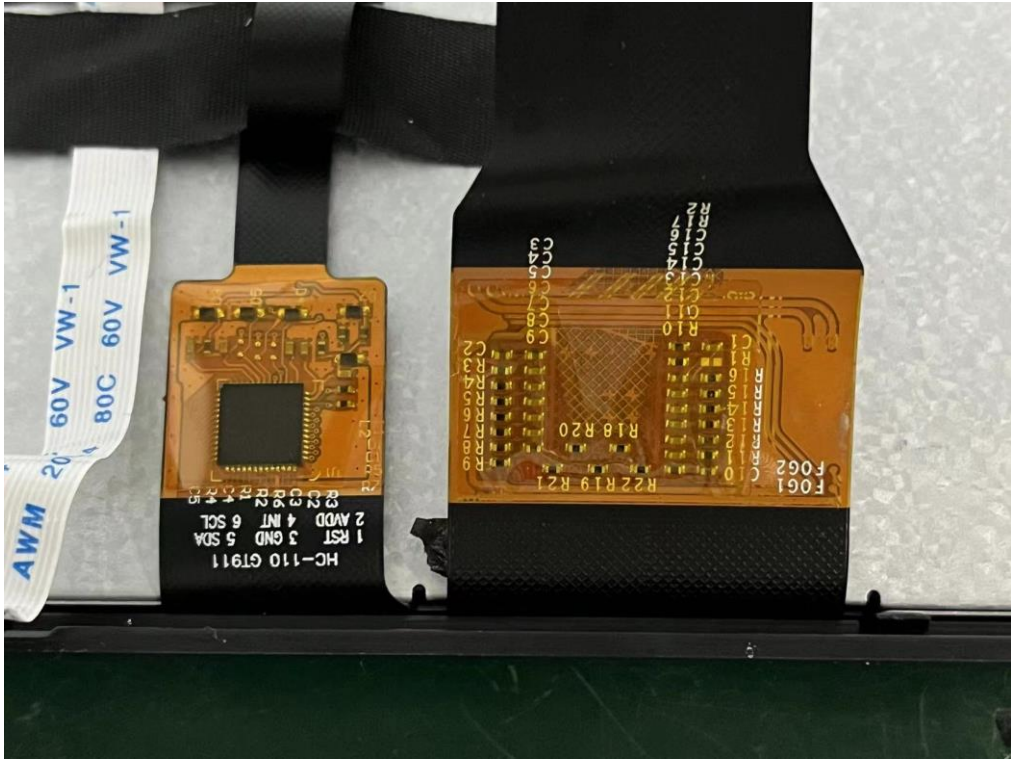
**External Photos**  
M/N: DMX4710S



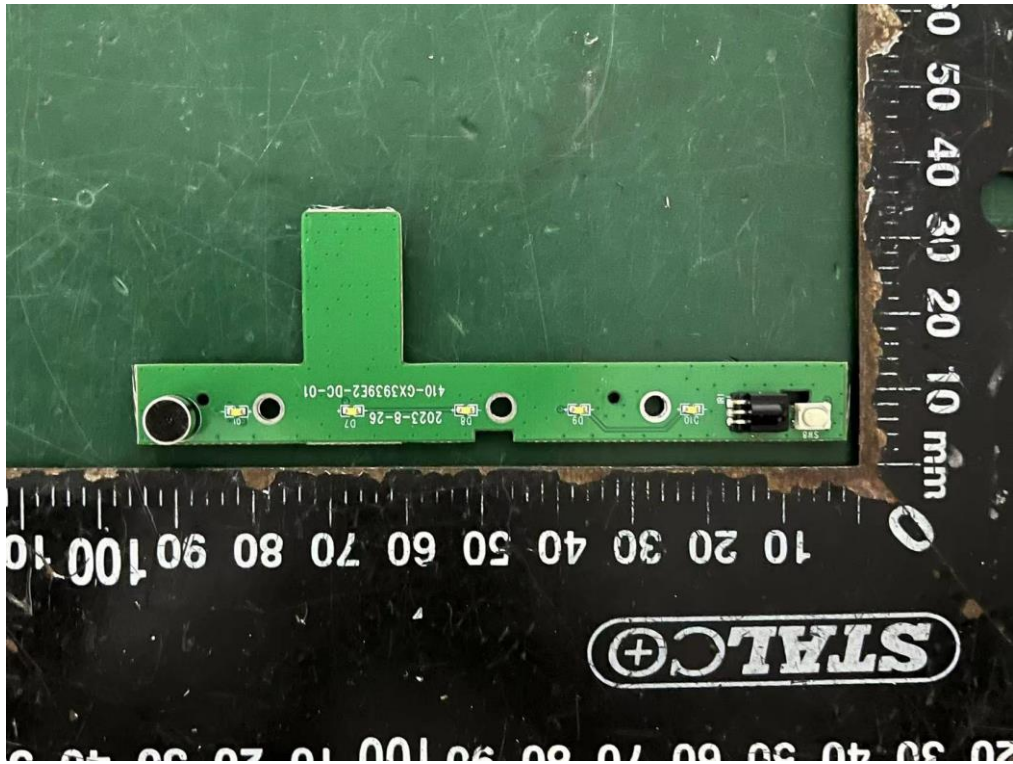
**Internal Photos**  
M/N: DMX4710S



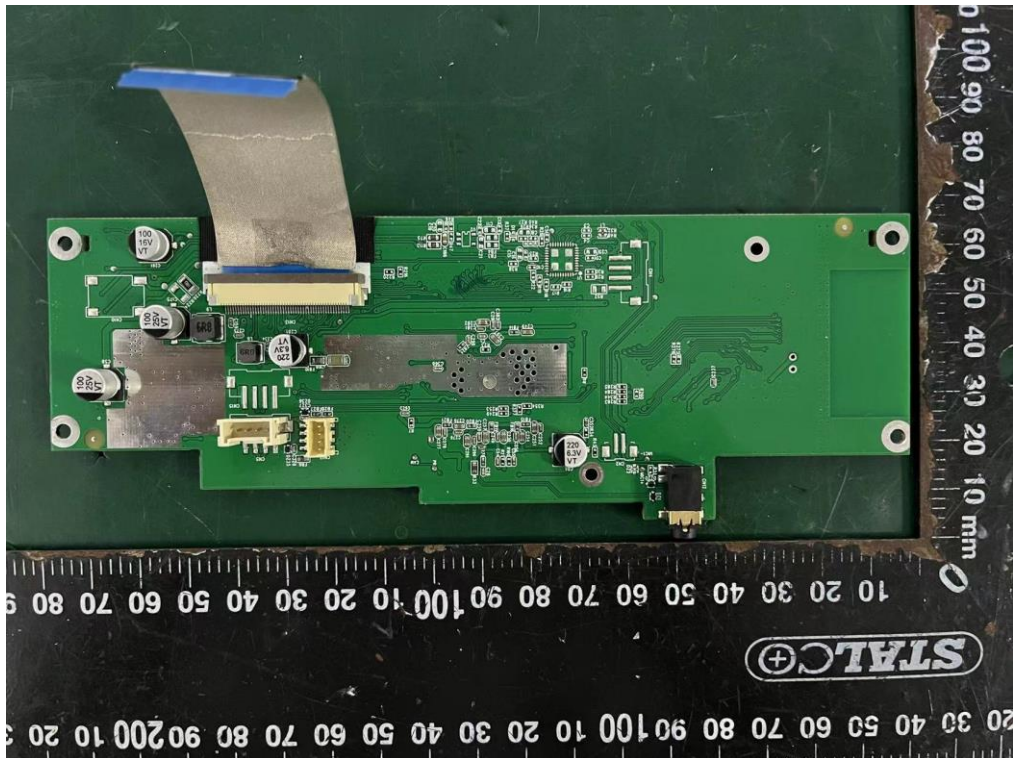
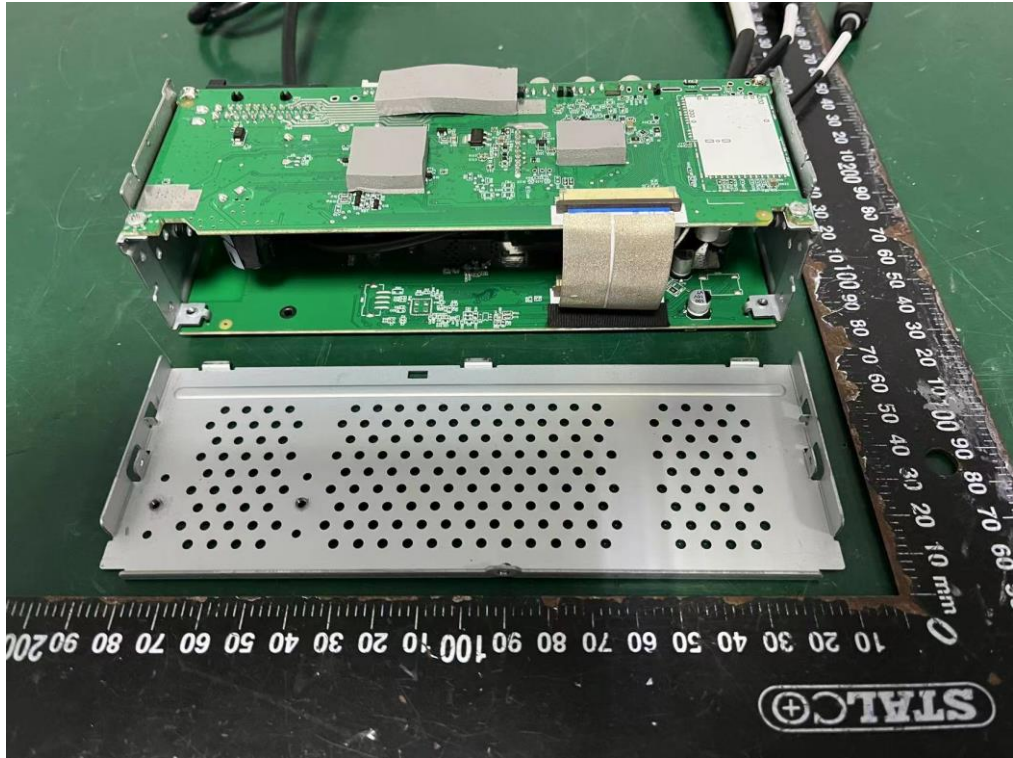
**Internal Photos**  
M/N: DMX4710S



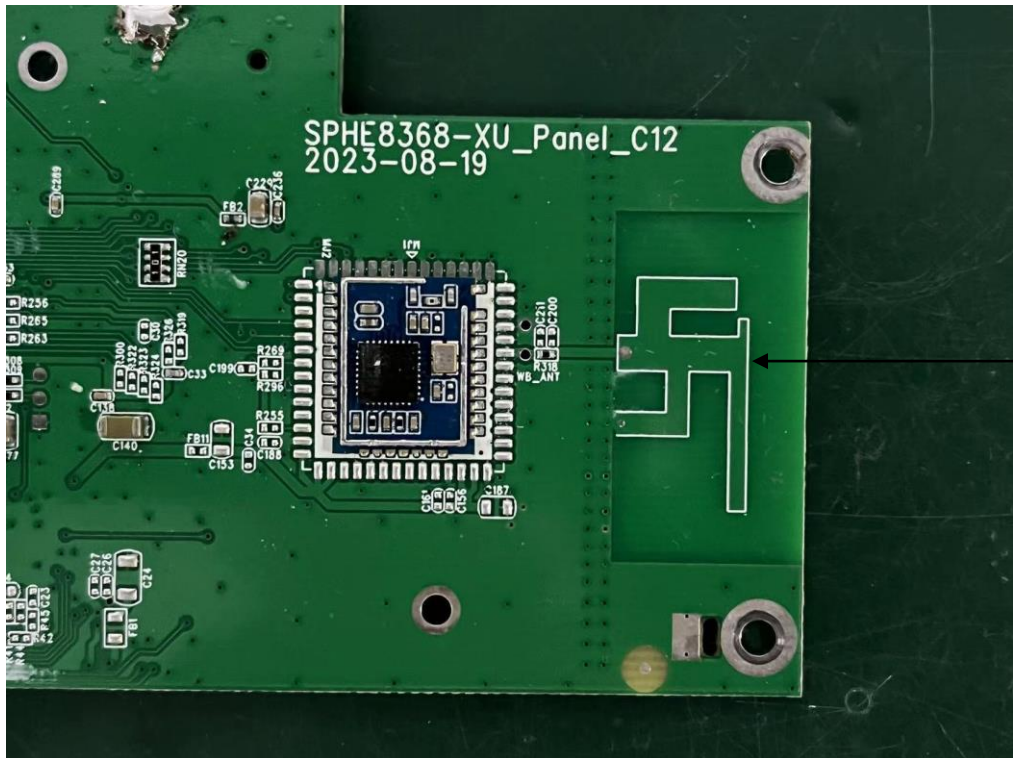
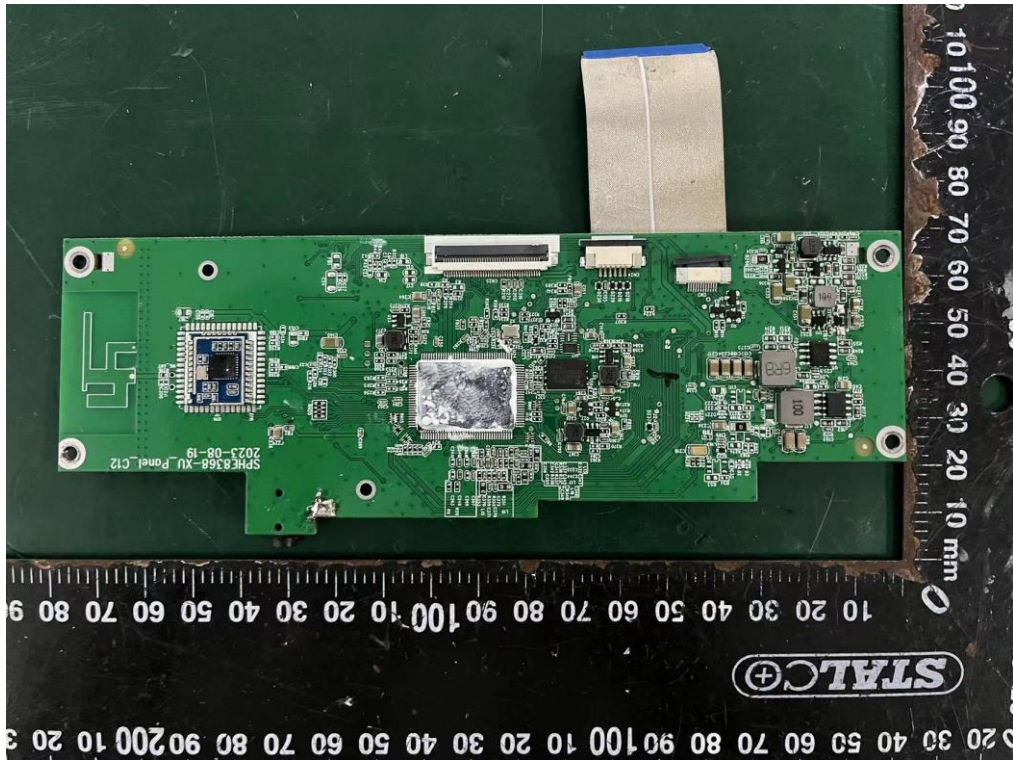
**Internal Photos**  
M/N: DMX4710S



**Internal Photos**  
M/N: DMX4710S

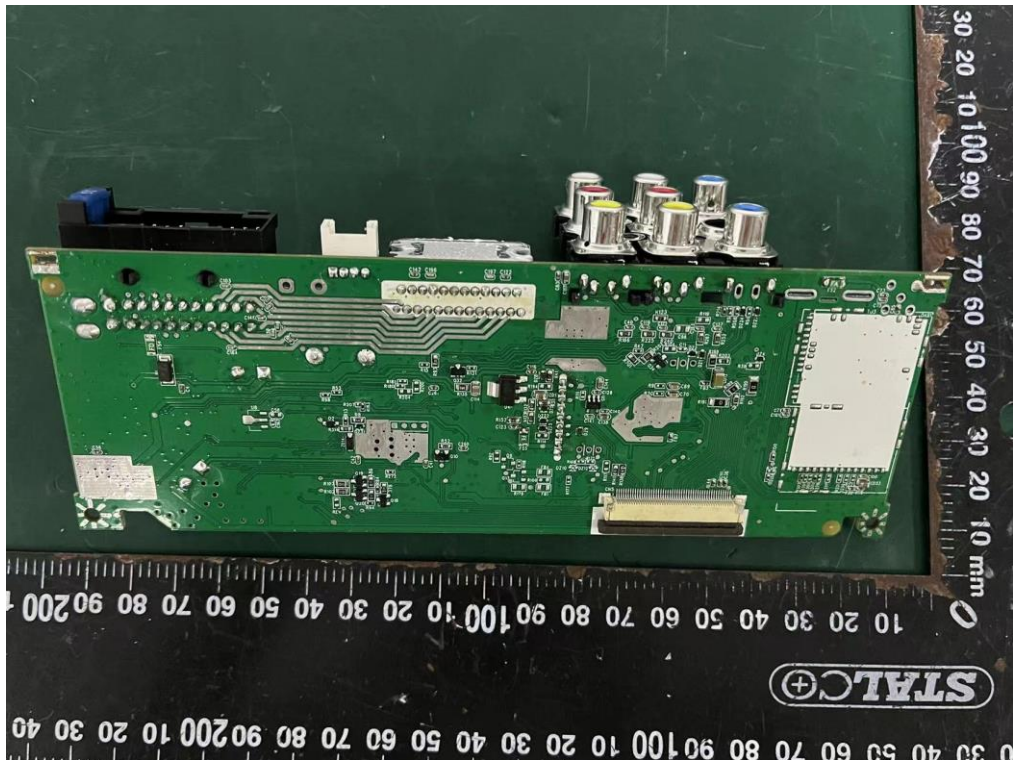
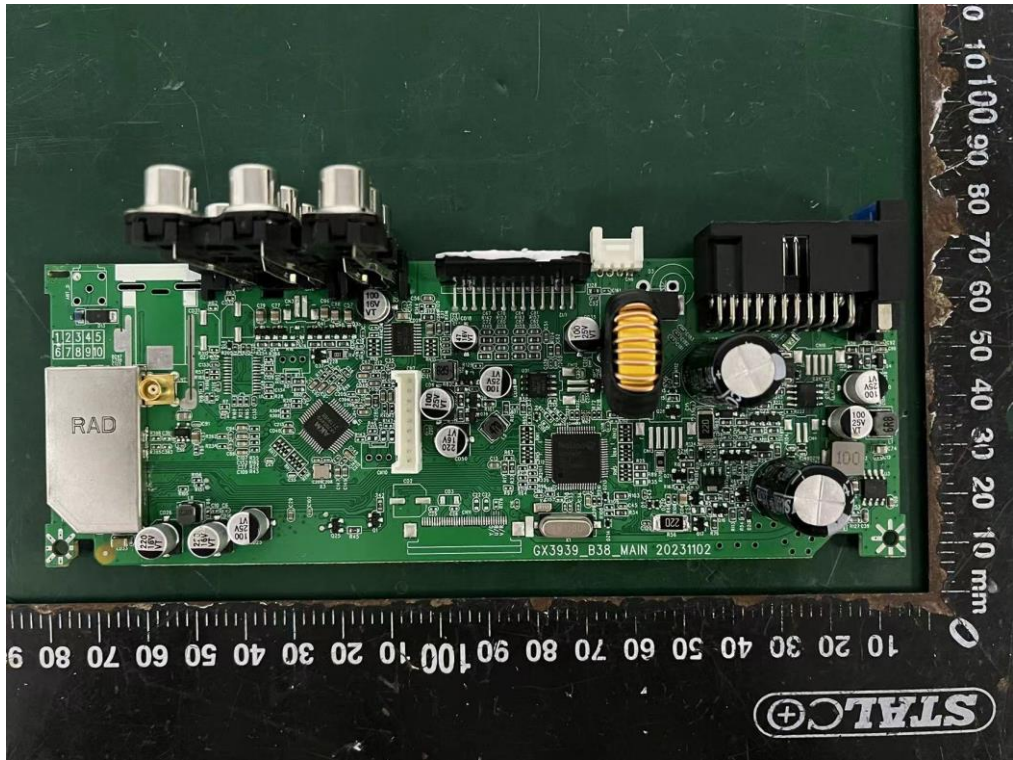


**Internal Photos**  
M/N: DMX4710S



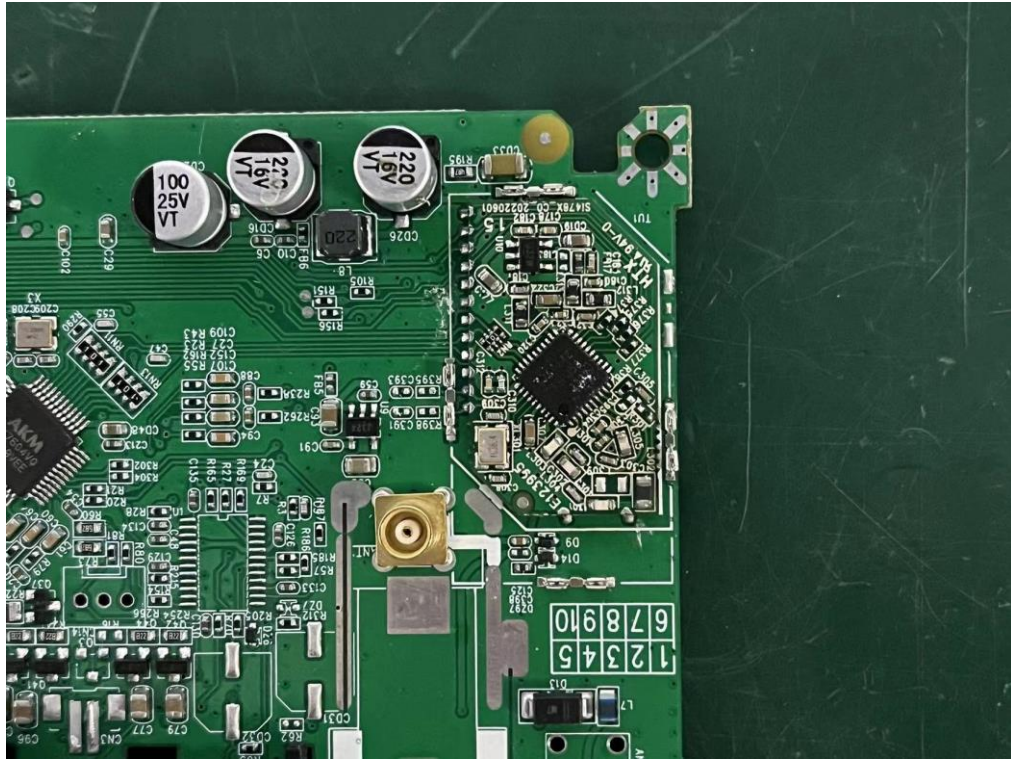
Bluetooth  
Antenna

**Internal Photos**  
M/N: DMX4710S





**Internal Photos**  
M/N: DMX4710S



**End of Test Report**