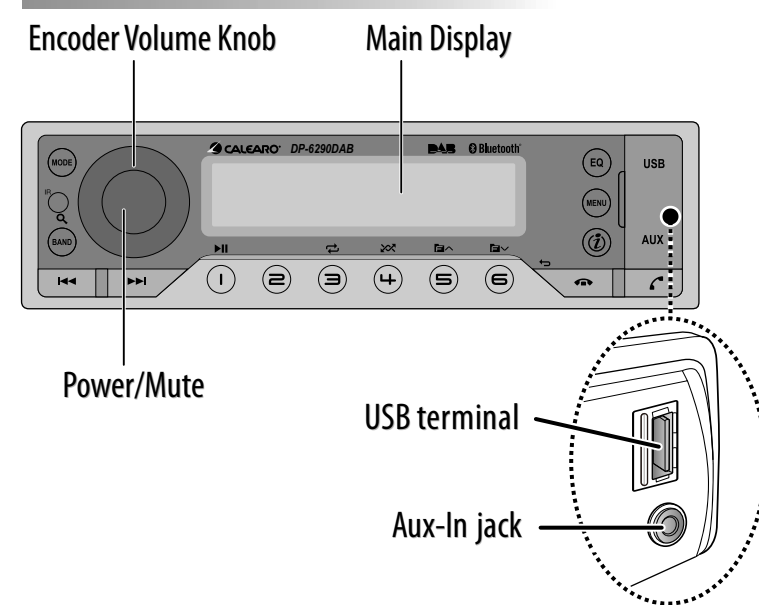


Front

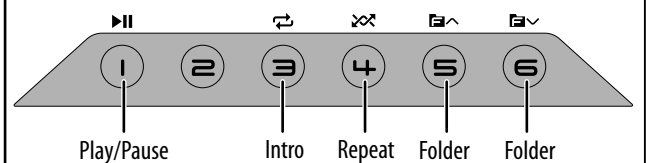


Overview of the unit



When you press or hold the following button(s)...

Main Unit	General operation
MODE	Select the available Source. If the power is turned on. <ul style="list-style-type: none"> Short press to mute or restore volume. Turn the unit on. Press and hold again to turn the unit off. Confirm selection. Rotate it to increase or decrease the volume. Rotate it to select items.
Power/Mute	<ul style="list-style-type: none"> Tuner Mode: Press to enter into the Auto Seek mode, press and hold to enter into the Manual Seek mode. Media Playback Mode: Press to track Up/Down, press and hold for fast forward/backward. BT Audio Mode: Press to track Up/Down. DAB Mode: Press to tune to a detected station.
BAND	<ul style="list-style-type: none"> Tuner Mode: Select the FM bands (FM1/FM2/FM3) or AM1/AM2. Press and hold to access into Auto Store mode, the six strongest stations of the selected band will be saved in preset channel automatically: FM1, FM2, FM3(1-6), AM1, AM2. Media Playback Mode: Press to access into search Folder/File music mode. DAB Mode: Press repeatedly to select a band: DAB1, DAB2 or DAB3. Press and hold to start searching for on-air DAB radio stations.
EQ	Press repeatedly to select a preset sound equalizer.
MENU	<ul style="list-style-type: none"> Press to access into the Audio Menu mode to adjust the below options: FLAT->POP->USER->TECHNO->ROCK->CLASSIC->JAZZ->VOCAL Press and hold to access into the System Menu.
Info	<ul style="list-style-type: none"> Press and hold to switch between Clock and Source Name. Tuner Mode: Press to view RDS received information. Media Playback: Press to view ID3 informations. DAB Mode: Press repeatedly to display available information that is transmitted by a DAB radio station.
Handfree	<ul style="list-style-type: none"> Returns to the previous item. BT Handfree Mode: To reject/end a call.
Handfree	<ul style="list-style-type: none"> BT Handfree Mode: During a telephone conversation, press and hold to transfer the call back to the Hand phone for privacy.
Preset Numeric Buttons	<ul style="list-style-type: none"> Tuner Mode: Press the Numeric buttons to recall the preset stations. Press and hold the Numeric buttons to store the listening station. Media Playback: Press the Numeric buttons to perform the below operation: DAB Mode: Press the Numeric buttons to store the listening station.



Listen to Digital Audio Broadcasts (DAB)

Digital Audio Broadcasting (DAB), is a way of broadcasting radio digitally through a network of transmitters. It provides you with more choice, better sound quality and more information.

For the first time when DAB mode is switched on.

- Press **MODE** on the main unit repeatedly to select **DAB/DAB+**.
 - The system performs auto scan.
 - All the available DAB stations are stored.
 - The radio tunes to the first available station

Scan for on-air stations

- Press and hold **MENU** access into the Setup Menu.
- Press **MENU** repeatedly until [SCAN] is displayed.
- Press **MENU**, the product starts scanning for on-air DAB radio stations, the detected stations are saved in the flash memory.

Antenna Power Supply 12V On/Off

- Press and hold **MENU** access into the Setup Menu.
- Press **MENU** repeatedly until [12V ON] or [12V OFF] is displayed.
- Rotate the knob to select an option, and then press **MENU** to confirm.
 - [12V ON]: Disable Antenna power supply (12V).
 - [12V OFF]: Enable Antenna power supply (12V).

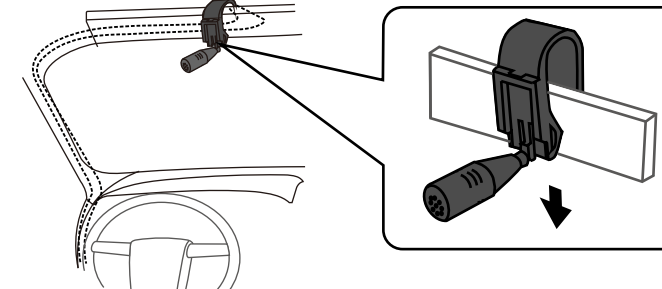
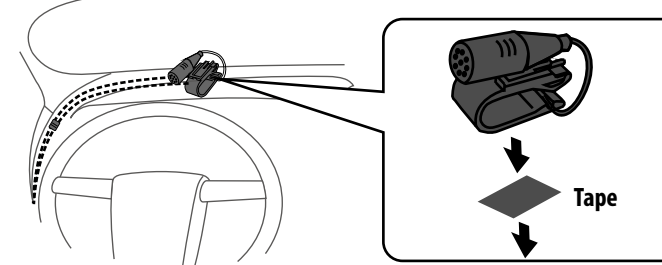
Erase the DAB station list

- Press and hold **MENU** access into the Setup Menu.
- Press **MENU** repeatedly until [PRUNE] is displayed.
 - To remove invalid stations from the list of scanned stations, press **MENU**.
 - To exit the system menu, press **MENU**.

Adjust Microphone Position

For better sound quality in make/receive phone call through Bluetooth, place the microphone near the mouth.

- Make sure the supplied microphone is connected to the car audio system.
- Place the microphone at a proper location, for example:
 - Stick it onto the dashboard
 - clip it on the sun-shield



Use Bluetooth Device

Pairing the Bluetooth device

On your Bluetooth-enabled device, follow the steps below.

- Search for Bluetooth devices.
- In the device list, select **DP6290**.
- Enter the default password "0000", and then confirm the password entry.
 - If the pairing is successful, the device name will be displayed on the LCD screen of this system.

Making a call

You can dial number through the mobile phone.

- Use the Mobile Phone to dial and make an outgoing call
- Once completed the dialing, the phone number and [CALLING] is displayed.

Receiving a Call

- If there is an incoming call, the phone number will be displayed. If the incoming call has no phone number, [PHONE IN] will be displayed.
- Press **MENU** to answer / accept the call.
- When conversation ends, press **MENU** to terminate the call.

Call Transfer

You can transfer voice from car speakers to mobile phones during a telephone conversation. During a telephone conversation, press and hold **MENU** voice transfers from car speakers to mobile phone.

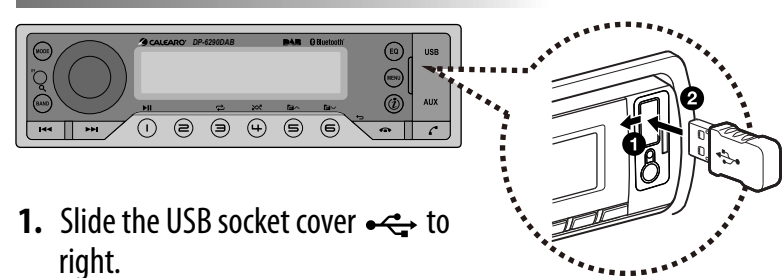
Adjust Setup Menu Settings

- Press and hold **MODE** access into the Setup Menu, and then press repeatedly to select the item to be adjusted
- Rotate the knob to select a value/option.
- Press the **MENU** button to exit.

When you press or hold the following button(s)...

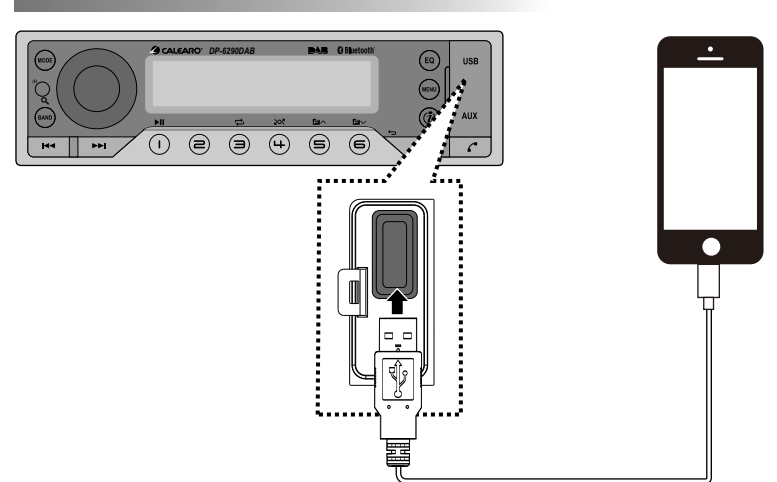
System Mode	Selectable setting
Clock Set	Adjust the Hours and Minutes
Clock Format	Select the time format 12H or 24H
Beep Tone	Turn On or Off this beep sound
Dimmer	Adjust the LCD display backlight level between High or Low
Reset	Restore the factory default settings.
Tuner Mode	Selectable setting
RDS On/Off	Turn On or Off the RDS function.
PTY (Program Type)	Once inside the PTY mode, press the get into program type item, and rotat encoder volume knob to selected category. Available Program Type: POP M; ROCK M; EASY M; LIGHT M; CLASSICS; OTHER M; JAZZ M; COUNTRY; NATION M; OLDIES M; FOLK M; A-TEST; ALARM; NEWS; AFFAIRS; INFO; SPORT; EDUCATE; DRAMA; CULTURE; SCIENCE; VARIED; WEATHER; FINANCE; CHILDREN; SOCIAL; RELIGION; PHONE IN; TRAVEL; LEISURE; DOCUMENT
AF (Alternate Frequencies)	<ul style="list-style-type: none"> ON: The unit will search for another station with stronger signal, but with the same program identification as the current station automatically. OFF: Turn off AF function
TA (Traffic Announcement)	<ul style="list-style-type: none"> ON: When there is traffic announcement, unit will automatically switch to the tuner mode (regardless of the current mode) and begins to broadcast the announcement on traffic conditions. When the traffic announcement is over, unit will automatically return to the previous mode. OFF: Traffic announcement does not cut in.
CT (Clock Time)	<ul style="list-style-type: none"> ON: Turn on the RDS clock. Time shown on the unit will synchronize with the clock time of the RDS station. OFF: Turn off the RDS clock.
Local	<ul style="list-style-type: none"> ON: only stations with strong signal can be broadcast. The Local indicator will light up. OFF: Stations of both strong and weak signals can be broadcast.
Area	Select suitable country area for this unit: EUROPE; ASIA; MID-EAST; AUSTRIA; USA; LATIN;
BT Mode	Selectable setting
RE-CON / DIS-CON	This feature allows to Re-connect or Dis-connect to the paired mobile phone or Bluetooth device by manually.

Playing a USB device



- Slide the USB socket cover to right.
- Insert the USB device into the USB socket.
- Press **MODE** to select USB mode, the unit starts playing from the USB device.

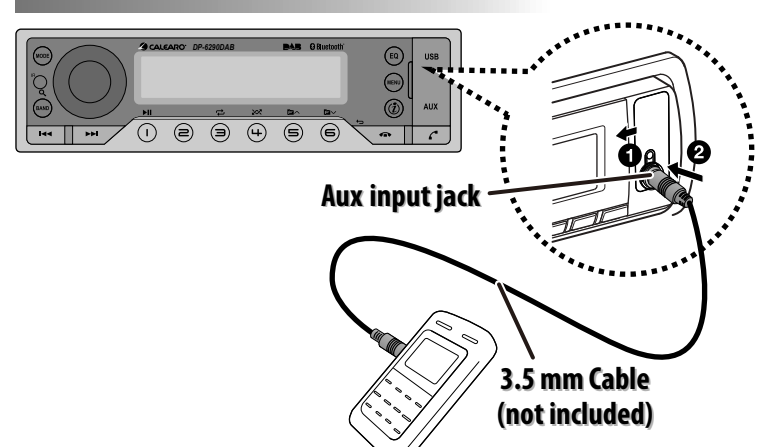
USB Smart Phone 1A charging



- Slide the USB socket cover to right.
- Insert the iPhone/Smart Phone device into the USB socket.
- Once the iPhone/Smart Phone is connected and recognized, the iPhone/Smart Phone begins to charge.

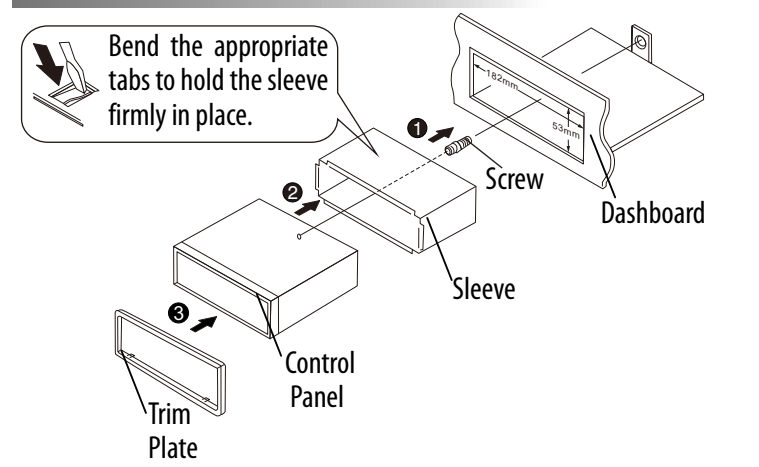
NOTE: This USB only can charge Phones, but cannot play or decode music files stores inside the Smart Phones.

Listening to external Aux input

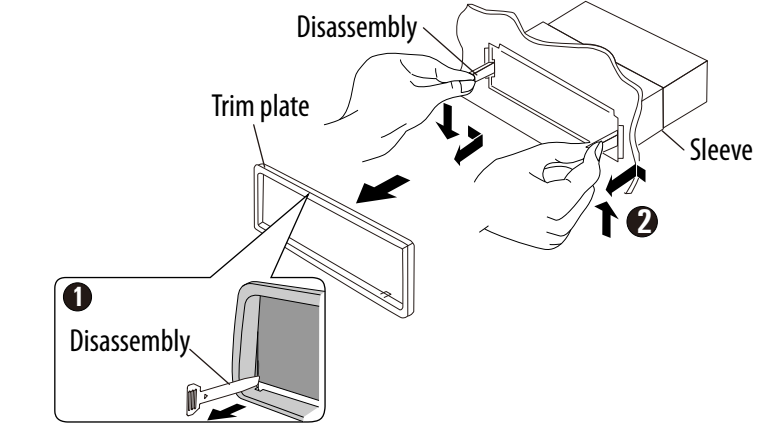


- Press **MODE** to select AUX mode.
- Turn on the external component and start playing.

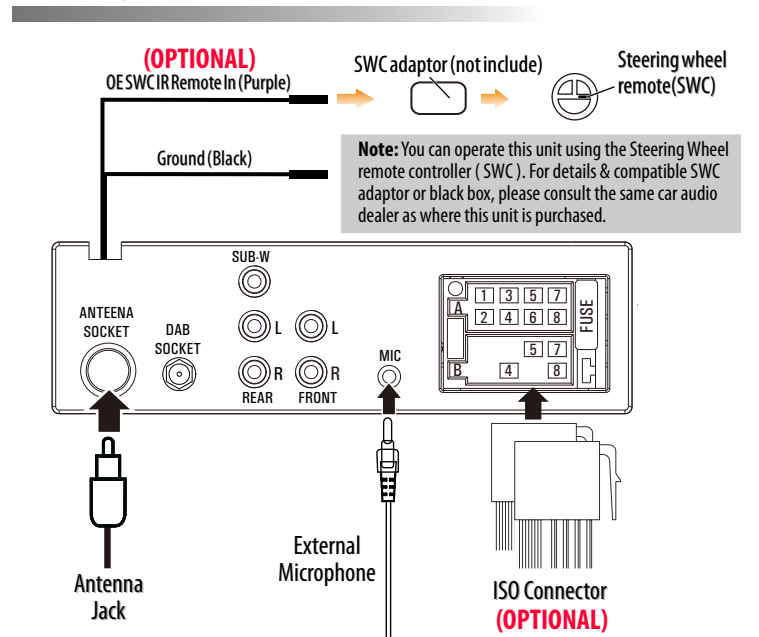
Installing the unit



Remove the unit



Wiring Connection



ISO Connector Wiring Chart

Pin	Color and function	Pin	Color and function
A4	Yellow Battery(+)	B1/B2	Violet/Black Right rear speaker
A5	Blue Connect to system control terminal of the power AMP or auto antenna relay control terminal (Max 150mA/12VDC)	B3/B4	Grey/Black Right front speaker
A7	Red Ignition(ACC)	B5/B6	White/White/Black Left front speaker
A8	Black Ground	B7/B8	Green/Green/Black Left rear speaker

Product Specifications

General	
Power Supply	12V DC (11V to 16V), negative ground
Fuse	15A
Suitable speaker impedance	4-8 Ω
Maximum power output	4x40W
Continuous power output	20W x 4RMS (4 Ω 10%T.H.D)
Pre-AMP output voltage	2.0V
Aux-In level	≥ 500mV
Operating Temperature	-20~+60
Dimension (WxHxD)	188 x 58 x 137.8mm
Radio Tuner	
Frequency Range	FM 87.5MHz to 108.0MHz
Range	AM 522kHz to 1620kHz
FM Tuner	Usable Sensitivity (S/N=20dB) 0.8uV
AM Tuner	Sensitivity/Selectivity (S/N=20dB) 30 uV
DAB Tuner	
Frequency Range	174 - 240MHz
Sensitivity	-100dBm(Band III)
Selectivity	40dB
Supports Audio Format	
Audio Format	60000
Play Back Folder	255
FLAC/WAV/MP3/WMA Folder	60000
USB Device	
USB	USB1.1 Full speed
USB Port	Type A
USB Voltage	5.0V
Maximum USB Memory Size	32G
USB Flash Drive and Hard	FAT16/FAT32
Bluetooth	
Output Power	Class 2
Frequency Band	2.4000 Ghz - 2.4835GHz ISM Band
Range	3 meters (free space)
Standard	Bluetooth 2.1 specification
Compatible Bluetooth Profiles	Hands-Free Profiles (HFP) A2DP(Advanced Audio Distribution Profile) AVRCP1.3(Audio/Video Remote Control Profile)

Remote Control Operation(Optional)



MUTE	Press to mute or restore volume.
VOL +	Press increases the volume.
VOL -	Press decreases the volume.
SEEK	<ul style="list-style-type: none"> Tuner Mode: Press to enter into the Auto Seek mode, press and hold to enter into the Manual Seek mode. Media Playback Mode: Press to track Up/Down, press and hold for fast forward/backward.
SRC	Select the available Source.
AUDIO	Press to access into the Audio Menu mode.

FCC STATEMENT

1. This device complies with Part 15 of the FCC Rules. Operation is subject to the following two conditions:
 (1) This device may not cause harmful interference, and
 (2) This device must accept any interference received, including interference that may cause undesired operation.
 2. any Changes or modifications not expressly approved by the party responsible for compliance could void the user's authority to operate the equipment.
NOTE: This equipment has been tested and found to comply with the limits for a Class B digital device, pursuant to Part 15 of the FCC Rules. These limits are designed to provide reasonable protection against harmful interference in a residential installation.
 This equipment generates uses and can radiate radio frequency energy and, if not installed and used in accordance with the instructions, may cause harmful interference to radio communications. However, there is no guarantee that interference will not occur in a particular installation. If this equipment does cause harmful interference to radio or television reception, which can be determined by turning the equipment off and on, the user is encouraged to try to correct the interference by one or more of the following measures: Reorient or relocate the receiving antenna. Increase the separation between the equipment and receiver. Connect the equipment into an outlet on a circuit different from that to which the receiver is connected. Consult the dealer or an experienced radio/TV technician for help.

FCC Radiation Exposure Statement

This equipment complies with FCC radiation exposure limits set forth for an uncontrolled environment. This equipment should be installed and operated with minimum distance 20cm between the radiator & your body

Size: 525x296mm (After Folding size: 105x148mm)

Color: 4 color printing

Paper: 105g粉纸

Printing: Double side printed