

# ROAV

## Owner's Manual

Roav Smart Car Charger F2

### Safety Instructions

Please read and understand all instructions before using this product. If damage is caused by failure to follow the instructions, the warranty does not apply.

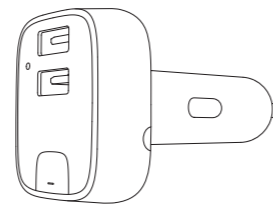
- Keep these instructions.
- Do not drop, puncture or disassemble this product.
- This product shall not be exposed to dripping or splashing.
- Avoid long exposure to direct sunlight, which may cause damage.
- Exposing this product to open flames may cause explosion.
- Do not use the product in strong magnetic field.
- Use clean, soft cloth to clean. Do not use any corrosive cleaner/oil to clean.
- Keep your attention on the road. Do not operate the controls of this product while driving.

### Introduction

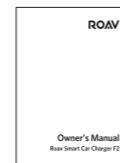
#### Features

- Hands-free call
- Stream music to car audio via FM transmitter
- AUX line out
- Dual USB charging ports
- PowerIQ with quick charge technology
- Companion app with FM frequency modulation and car locator

#### What's Included

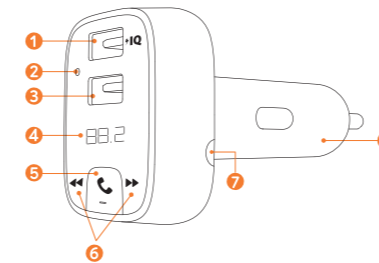


Roav Smart Car Charger F2



Manual

### At a Glance

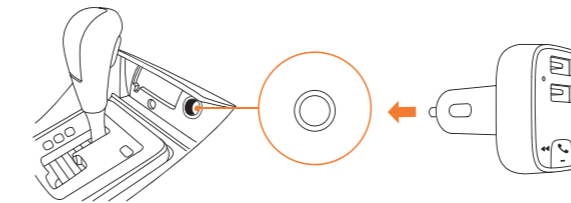


- 1 USB charging port
- 2 Microphone
- 3 USB charging port
- 4 LED display
- 5 / Multifunction button
- 6
- 7 AUX line out
- 8 Car charger adapter

LED indicators	Status
is flashed	No Bluetooth connected and no flash drive detected
FM frequency is displayed	Bluetooth connected or flash drive detected
FM frequency is flashed	Enter FM mode to set FM frequencies
	Incoming call
HF	In a call with hands-free
RB	In a call through smartphone

### Get Started

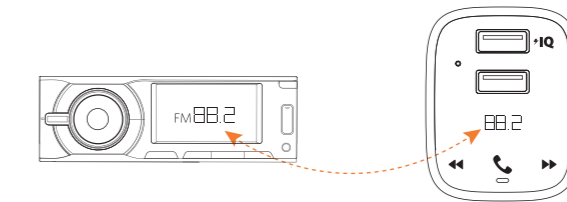
- 1 Plug Roav smart car charger into your vehicle's cigarette lighter socket.
- 2 Start your vehicle's engine and the LED display will light on. will flash and a voice prompt "waiting to pair" will be heard.



- 3 Enable Bluetooth on your smartphone and search for Bluetooth devices available. Select "Roav F2\_xxxx" and connect. Once successfully connected, FM frequency will be displayed and a voice prompt "successfully paired" will be heard.



- 4 Turn on the FM radio on your car audio deck and tune to an unoccupied frequency (white noise). Press and hold the multifunction button on Roav smart car charger until FM frequency flashes. Press or hold / until the transmitting frequency matches the frequency selected on your car audio.



### Roav Charger App

With the Roav Charger app, you can set FM frequencies, locate your car, upgrade software, and learn more about Roav smart car charger.

To download Roav Charger app, search "Roav Charger" in App Store or Google Play.



Download on the App Store

GET IT ON Google Play

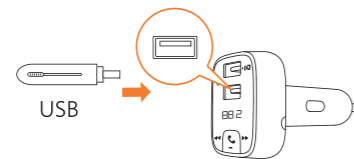
Apple and the Apple logo are trademarks of Apple Inc. Google Play and the Google Play logo are trademarks of Google Inc.



Model: R5111  
SM-A534-V01

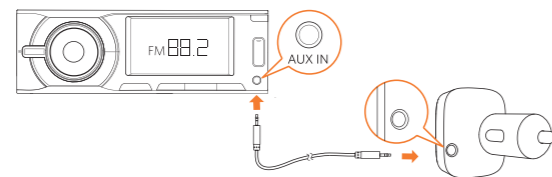
## Play Music

When the Roav smart car charger is successfully connected with your smartphone, you can play music from your phone. Music can then be streamed to your car audio via FM transmitter. You can also enjoy music that are stored on a USB flash drive.



Play / Pause	Press
Previous / Next track	Press

To further reduce echo and cabin noise on your calls, you can connect a 3.5 mm AUX cable (not provided) to AUX line out socket of the Roav smart car charger and AUX IN socket of your car audio system.



7

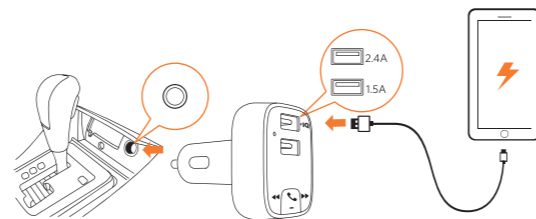
## Hands-free Call

When the Roav smart car charger is successfully connected with your smartphone, you can enjoy convenient hands-free call.

Answer / End a call	Press
Reject a call	Press and hold  for 1 second

## Charge Your Devices

The Roav smart car charger contains dual USB charging ports. You can charge two devices at the same time with maximum output of 5V/3.9A.



8

## Specifications

Specifications are subject to change without notice.

DC input: 12V - 24V

Power output: 5V  $\approx$  3.9A Max

Bluetooth version: V4.2

Bluetooth transmission distance: 10 m / 393.7 in

Audio format: .mp3 .wma .flac .wav

FM frequency range: 88.1-107.9 MHz

FM transmission range: 2 m / 78.7 in

Operating temperature range: -4°F to 158°F / -20°C to 70°C

Storage temperature range: -40°F to 185°F / -40°C to 85°C

9

## Notice

This product complies with the radio interference requirements of the European Community.  
BT Operating Frequency Range: 2402-2480 MHz;  
BT Max Output Power:15 dBm

This product is designed and manufactured with high quality materials and components, which can be recycled and reused.

This symbol means the product must not be discarded as household waste, and should be delivered to an appropriate collection facility for recycling. Proper disposal and recycling helps protect natural resources, human health and the environment. For more information on disposal and recycling of this product, contact your local municipality, disposal service, or the shop where you bought this product.

## FCC Statement

This device complies with Part 15 of the FCC Rules. Operation is subject to the following two conditions: (1) this device may not cause harmful interference, and (2) this device must accept any interference received, including interference that may cause undesired operation.

**Warning:** Changes or modifications not expressly approved by the party responsible for compliance could void the user's authority to operate the equipment.

10

**Note:** This equipment has been tested and found to comply with the limits for a Class B digital device, pursuant to Part 15 of the FCC Rules. These limits are designed to provide reasonable protection against harmful interference in a residential installation.

This equipment generates uses and can radiate radio frequency energy and, if not installed and used in accordance with the instructions, may cause harmful interference to radio communications. However, there is no guarantee that interference will not occur in a particular installation. If this equipment does cause harmful interference to radio or television reception, which can be determined by turning the equipment off and on, the user is encouraged to try to correct the interference by one or more of the following measures: (1) Reorient or relocate the receiving antenna. (2) Increase the separation between the equipment and receiver. (3) Connect the equipment into an outlet on a circuit different from that to which the receiver is connected. (4) Consult the dealer or an experienced radio/TV technician for help.

11

## Customer Service

12-month limited warranty

Lifetime technical support

support@goroav.com

1-800-988-7973 (US) Mon-Fri 9am-5pm (PST)

@GoRoav

@GoRoav

12