

品名: M4B 说明书

物料编号:

发行日期: 2016/04/06

版本: V X. 1

更新日志:

VX. 1
1. 文件建立

504.00 mm

72.00 mm

76.00 mm

Call

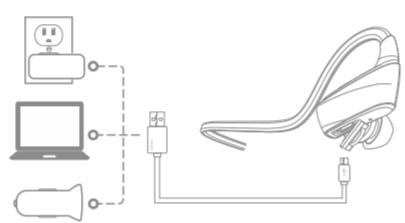
Answer a call
Press the Multifunction button or Volume "+" or Volume "-" once.
Reject a call
Press and hold the Multifunction button for about 2 seconds.
End a call
Press the Multifunction button once.
End current call and answer new call
When a new call rings during a call, press the Multifunction button once to answer new call and end current call simultaneously.
On hold current call and answer new call
When a new call rings during a call, Double the Multifunction button to hold current call and answer new call.
Reject the new call hold the current call
During the call there is a new call, press the multifunction button to reject a new call, keeping the active call.

Mute on/off
Press the Volume "-" for about 2 seconds to mute on/off.
Switch between the earphone and phone
Press the multifunction button for about 2 seconds during a call, the call will be switched to the mobile phone, redo this operation again, the call will be switched to the earphone.
Redial the last call
Double-press the Multifunction button in standby mode. The mobile phone will redial the last call number.
Voice dial (Need phone support)
In standby mode Press the Multifunction button about 2 seconds, wait for phone prompt and then tell the phone to dial the name of a stored contact.

Music

(Need media player support).
Music play / pause
Press Multifunction button once to play / pause music. (Some phones may require you to start a media player first).
Track back/forward
Press the Volume "-" for 2 seconds once to skip track backward, press Volume "+" for 2 seconds once to skip track forward.
Switch Music and Call
When a call rings during a music playing, the music automatically pauses to allow you to answer or ignore the call. Once the call is ignored or ends, the music is resumed.

Basic operation

Charging
Your new earphone has enough power to pair and make a few calls. It takes 2 hours to fully charge the earphone; while charging, the battery indicator light is red, the indicator light flashes blue once charging is complete.
Note: The lifetime of the battery will be significantly reduced if your earphone is left uncharged for a long period. We recommend that you recharge your earphone at least once a month.


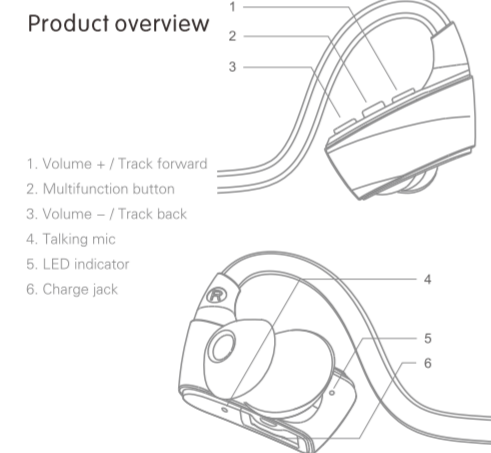
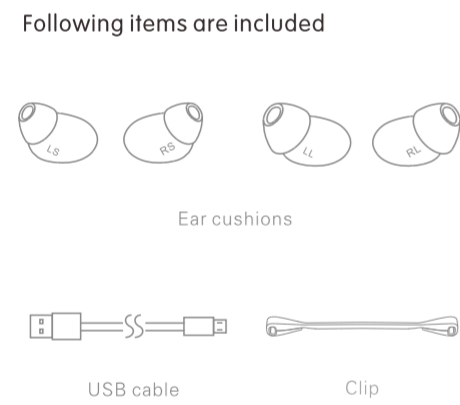
Turn on voice prompts: enter pairing mode: Press the volume "+" button for 3 seconds, the blue LED lights flash 3 times.
Turn off voice prompts: enter pairing mode: Press the volume "-" button for 3 seconds, the red LED lights flash 3 times.
Clear paired list
Make sure the earphone is turned off, press and hold the Multifunction button until the LED indicator flashes red and blue alternately (About 5 seconds), then release Multifunction button. Press volume "+" and volume "-" button at the same time until LED flashes blue, then LED flashes red and blue alternately, the paired list was cleared, the earphone will enter pairing mode after power on next time.
Hard reset
If the earphone cannot be turned on even when fully charged or does not respond during use, follow the instructions below to reset it.
1. While pressing and holding the multifunction button, connect the earphone to your PC's USB port or a USB power adapter with the charging cable.
2. Keep pressing and holding the Multifunction button until the earphone turns on. The earphone is now reset.

Safety and care

Using earphone at high to moderate volumes for extended periods of time will result in permanent hearing damage. It is advised you keep volume levels moderate to low at all times for your safety.
Do not use while driving a car, cycling, operating machinery, or performing other activities that require hearing surrounding sounds.
Do not use earphone in thunderstorm weather, the earphone may not work properly in the condition, and increase the risk of being hit by lightning.
Earphone may not work properly under high temperature or high humidity conditions.
Do not use any corrosive cleaner/oil to clean the earphone.
If the earphone comes in contact with liquids, quickly wipe away. If submerged in water, do not turn the earphone on until completely dried. Tips: liquid submersion voids the warranty.
Keep the earphone and packaging out of reach of children.

cannice
WIRELESS SPORTS EARPHONE
E2 INSTRUCTION

Start here



Status indicator

Instruction	LED status	Voice prompts
Power on	Stay blue about one second	Power on
Power off	Stay red about two second	Power off
Standby	Blink blue once every 5 seconds	/
Pairing	Flashes red and blue alternately	Pairing
Incoming call	Flashes blue quickly	Trinkle
Battery low	Blink red	Battery low
Charging	Stays on red while charging	/
	Stays on blue after fully charged	/

Volume up/down Press the volume "+" to turn volume up Press the volume "-" to turn volume down
Power on Press and hold Multifunction button for about 3 seconds. The earphone says "power on" and the LED flashes blue once.
Power off Press and hold Multifunction button for about 5 seconds. The earphone says "power off" and the LED flashes red once.
Tip: When the distance between the earphone and phone is beyond effective range, earphone disconnects with phone. Earphone will power off automatically once no active for 15 minutes.

Pairing

Pair one phone
Note: When the earphone and phone have been paired once, they will automatically connect when the earphone is on and Bluetooth is activated on the phone.
1. Make sure the earphone is turned off and within 1 meter of your phone, press and hold the Multifunction button until the LED indicator flashes red and blue alternately (About 5 seconds), then release Multifunction button.
2. Activate Bluetooth on your phone (See below for more details).
iPhone
a. On your phone, open the Settings menu.
b. Select Bluetooth. If Bluetooth is off, turn it on. The iPhone will search for new devices automatically.
Android phone
a. On your phone, open the Settings menu.
b. Select Bluetooth (For old Android phone, Bluetooth is found in the Wireless & Networks). If Bluetooth is off, turn it on. Select Search for Devices if your phone does not automatically search for new devices.

Windows Phone 8

a. On your phone, open the Settings menu.
b. Select Bluetooth. If Bluetooth is off, turn it on. The Phone will search for new devices automatically.



3. Select "E2". If your phone asks, enter 0000 (four zeros) for the Passcode or accept the connection. The LED indicator stops flashing red and blue once successfully paired, you hear "Connection successful". Some phone list an option to "Play through earphone", select to use the earphones.

Pair another phone

Multipoint technology enables you to pair another phone and take a call from either.
To pair with another mobile phone, follow the steps for "Pair one phone". After pairing successfully, restart the earphone to connect to 2 paired mobile phone automatically.
Calling switch
When the first phone call rings, press the Multifunction button once to answer the call; if the seconds call rings at this moment, you can answer the second phone by double click Multifunction button, and on hold the first phone call.



FCC STATEMENT :
This device complies with Part 15 of the FCC Rules. Operation is subject to the following two conditions:
(1) This device may not cause harmful interference, and
(2) This device must accept any interference received, including interference that may cause undesired operation.

Warning: Changes or modifications not expressly approved by the party responsible for compliance could void the user's authority to operate the equipment.
NOTE: This equipment has been tested and found to comply with the limits for a Class B digital device, pursuant to Part 15 of the FCC Rules. These limits are designed to provide reasonable protection against harmful interference in a residential installation. This equipment generates uses and can radiate radio frequency energy and, if not installed and used in accordance with the instructions, may cause harmful interference to radio communications. However, there is no guarantee that interference will not occur in a particular installation. If this equipment does cause harmful interference to radio or television reception, which can be determined by turning the equipment off and on, the user is encouraged to try to correct the interference by one or more of the following measures:
Reorient or relocate the receiving antenna.
Increase the separation between the equipment and receiver.
Connect the equipment into an outlet on a circuit different from that to which the receiver is connected.

Consult the dealer or an experienced radio/TV technician for help.

RF warning statement:
The device has been evaluated to meet general RF exposure requirement. The device can be used in portable exposure condition without restriction.

要求:
1. 128g铜板纸, 苟包折

制作:

审核:

批准:



本资料所载之图案及文字均为科奈信科技有限公司的智慧财产。任何未经授权的影印、转写或照相之复制行为, 将受到智慧财产权保护法之追究。