



RECHARGEABLE WIRELESS MOUSE WITH ADJUSTABLE RESOLUTION

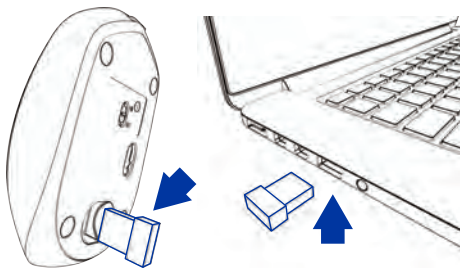
USER MANUAL

FEATURES

- 2.4 GHz rechargeable wireless mouse
- Adjustable resolution: 800 / 1200 / 1600 DPI
- High precision smooth optical engine
- Clickable scrolling wheel
- Frequency: 2400MHz - 2480MHz
- Rating: 3.7V - 20mA
- Lithium battery: 600mAh

QUICK INSTALLATION GUIDE

1. Get the receiver
2. Connect the receiver to your computer



RECHARGE YOUR MOUSE

Connect the micro USB cable to your mouse and the other end to a USB port on your computer. Recharge for at least 2 hours.



FOR HELP, COMMENTS, QUESTIONS OR CONCERNS
PLEASE CONTACT OUR TECH SUPPORT TEAM VIA OUR WEBSITE
WWW.SABRENT.COM

FCC STATEMENT :

This device complies with Part 15 of the FCC Rules. Operation is subject to the following two conditions:
(1) This device may not cause harmful interference, and
(2) This device must accept any interference received, including interference that may cause undesired operation.
Warning: Changes or modifications not expressly approved by the party responsible for compliance could void the user's authority to operate the equipment.

NOTE: This equipment has been tested and found to comply with the limits for a Class B digital device, pursuant to Part 15 of the FCC Rules. These limits are designed to provide reasonable protection against harmful interference in a residential installation. This equipment generates uses and can radiate radio frequency energy and, if not installed and used in accordance with the instructions, may cause harmful interference to radio communications. However, there is no guarantee that interference will not occur in a particular installation. If this equipment does cause harmful interference to radio or television reception, which can be determined by turning the equipment off and on, the user is encouraged to try to correct the interference by one or more of the following measures:

- Reorient or relocate the receiving antenna.
- Increase the separation between the equipment and receiver.
- Connect the equipment into an outlet on a circuit different from that to which the receiver is connected.
- Consult the dealer or an experienced radio/TV technician for help.