

FCC Report

Application Purpose : Original grant
Applicant Name: : WINTOR ELECTRONICS CO., LIMITED
FCC ID : 2AB75-WM-710A
Equipment Type : 2.4GHz Wireless optical mouse
Model Name : WM-710, MP2175BLU, MP2275RED, MP2375BLK,
MP2475PUR
Report Number : FCC15123233
Standard(S) : FCC Part 15 Subpart C Section 15.249
Date Of Receipt : December 4, 2015
Date Of Issue : December 11, 2015

Test By :



(Fall Ma)

Reviewed By :



(Robie Chen)

Authorized by :



(Michal Ling)

Prepared by :

Shenzhen WST Testing Technology Co., Ltd.
1F, No.9 Building, TGK Science & Technology Park Yangtian
Rd., NO.72 Bao'an Dist., GuangDong, China

REPORT REVISE RECORD

Report Version	Revise Time	Issued Date	Valid Version	Notes
V1.0	/	December 11, 2015	Valid	Original Report

Table of Contents	Page
1. GENERAL INFORMATION	5
2. TEST DESCRIPTION	7
2.1 MEASUREMENT UNCERTAINTY	7
2.2 DESCRIPTION OF TEST MODES	8
2.3 CONFIGURATION OF SYSTEM UNDER TEST	9
2.4 DESCRIPTION OF SUPPORT UNITS	9
3. SUMMARY OF TEST RESULTS	10
4. MEASUREMENT INSTRUMENTS	11
5. ANTENNA REQUIREMENTS	12
5.1 STANDARD APPLICABLE	12
5.2 TEST RESULT	12
6. CONDUCTED EMISSIONS MEASUREMENT	13
6.1 POWER LINE CONDUCTED EMISSION LIMITS	13
6.2 TEST PROCEDURE	14
6.3 TEST SETUP	14
6.4 ENVIRONMENTAL CONDITIONS	14
6.5 TEST RESULTS	14
7. RADIATED EMISSION MEASUREMENT	15
7.1 RADIATED EMISSION LIMITS	15
7.2 TEST EQUIPMENT SETUP	16
7.3 TEST PROCEDURE	16
7.4 TEST SETUP	17
7.5 ENVIRONMENTAL CONDITIONS	18
7.6 TEST RESULTS	19
8. 20DB OCCUPIED BANDWIDTH	25
8.1 STANDARD APPLICABLE	25
8.2 TEST PROCEDURE	25
8.3 TEST SETUP	25
8.4 ENVIRONMENTAL CONDITIONS	25
8.5 TEST RESULTS	26

Table of Contents**Page****9. PHOTOGRAPHS OF TEST SETUP****28****10. PHOTOGRAPHS OF EUT****30**

1. GENERAL INFORMATION

GENERAL DESCRIPTION OF EUT

Equipment Type	2.4GHz Wireless optical mouse
Test Model	WM-710, MP2175BLU, MP2275RED, MP2375BLK,MP2475PUR
Brand Name	N/A
Applicant	WINTOR ELECTRONICS CO., LIMITED
Address	Unit 04 7/F, Bright Way Tower 33, Mong Kok RD KL, HONGKONG
Manufacturer	Shenzhen Wintop Electronics Co., Limited
Address	HuaGuan Industrial Park, Xinhe Road, Baolai Industrial District, Shangmugu, Pinghu Town, Longgang District, Shenzhen City, 518000, China
Hardware version:	WM710-Telink-3205-V1.1
Software version:	N/A
Operating Voltage	DC 3.0V(AAA Battery * 2) 15mA
Operating Frequency	2405-2470MHz
Channels	8
Modulation Type	FSK
Antenna Type:	PCB Antenna
Antenna gain:	1.72dBi
Data of receipt	December 4, 2015
Date of test	December 4, 2015 to December 11, 2015
Deviation	None
Condition of Test Sample	Normal

We hereby certify that:

The above equipment was tested by Shenzhen WST Testing Technology Co., Ltd.

Registration Number: 939433

The data evaluation, test procedures, and equipment configurations shown in this report were made in accordance with the procedures given in ANSI C 63.4:2009. The sample tested as described in this report is in compliance with the FCC Rules Part15 Subpart C.

The test results of this report relate only to the tested sample identified in this report.

2. TEST DESCRIPTION

2.1 MEASUREMENT UNCERTAINTY

The reported uncertainty of measurement $y \pm U$, where expanded uncertainty U is based on a standard uncertainty multiplied by a coverage factor of $k=2$, providing a level of confidence of approximately 95%.

No.	Item	Uncertainty
1	Conducted Emission Test	± 3.2 dB
2	RF power, conducted	± 0.16 dB
3	Spurious emissions, conducted	± 0.21 dB
4	All emissions, radiated(<1G)	± 4.7 dB
5	All emissions, radiated(>1G)	± 4.7 dB
6	Temperature	± 0.5 °C
7	Humidity	± 2 %

2.2 DESCRIPTION OF TEST MODES

The system was configured for testing in engineering mode, which was provided by the manufacturer. The engineering mode was configured under maximum power output and switched the channels by keys.

8 channels were provided by the manufacturer.

Channel List							
Channel	Frequency (MHz)	Channel	Frequency (MHz)	Channel	Frequency (MHz)	Channel	Frequency (MHz)
00	2405	02	2422	04	2440	06	2460
01	2413	03	2430	05	2450	07	2470

Test Mode List		
Test Mode	Description	Remark
TM1	Low Channel	2405MHz
TM2	Middle Channel	2430MHz
TM3	High Channel	2470MHz

Note:

- (1) The measurements are performed at the highest, middle, lowest available channels.
- (2) Record the worst case of each test item in this report.

2.3 CONFIGURATION OF SYSTEM UNDER TEST

EUT

(EUT: 2.4GHz Wireless optical mouse)

2.4 DESCRIPTION OF SUPPORT UNITS

The EUT has been tested as an independent unit together with other necessary accessories or support units. The following support units or accessories were used to form a representative test configuration during the tests.

Item	Equipment	Model No.	ID or Specification	Remark
1	/	/	/	/

Note:

- (1) *All the equipment/cables were placed in the worst-case configuration to maximize the emission during the test.*
- (2) *Grounding was established in accordance with the manufacturer's requirements and conditions for the intended use.*

3. SUMMARY OF TEST RESULTS

Test procedures according to the technical standards:

FCC Part15 (15.247) , Subpart C			
Standard Section	Test Item	Judgment	Remark
§15.203	Antenna Requirement	PASS	
§15.207	Conducted Emission	N/A	
§15.249 (a)	Field Strength of Fundamental	PASS	
§15.249 (a) (d)/ §15.209	Spurious Emissions	PASS	
§15.249 (d)/ §15.205	Band Edge	PASS	
§15.215 (c)	20dB Occupied Bandwidth	PASS	

Note:

1. Pass: Test item meets the requirement.
2. Fail: Test item does not meet the requirement.
3. N/A: Test case does not apply to the test object.
4. The test result judgment is decided by the limit of test standard.

4. MEASUREMENT INSTRUMENTS

Kind of Equipment	Manufacturer	Type No.	Serial No.	Last Calibrated	Calibrated until
EMI Test Receiver	R&S	ESCI	100005	2015-08-19	2016-08-18
LISN	Mestec	AN3016	04/10040	2015-08-19	2016-08-18
Coaxial cable	Megalon	LMR400	C001	2015-08-19	2016-08-18
System Controller	CT	SC100	011208	2015-08-19	2016-08-18
Bi-log Antenna	SUNOL Sciences	JB3	A021907	2015-09-13	2016-09-12
Spectrum Analyzer	R&S	FSU	100114	2015-08-19	2016-08-18
Horn Antenna	SCHWARZBECK	9120D	1141	2015-08-19	2016-08-18
Loop Antenna	EMCO	6502	00042960	2015-08-19	2016-08-18
Pre Amplifier	H.P.	HP8447E	2945A02715	2015-10-13	2016-10-12
Pre-Amplifier	CDSI	PAP-1G18-38	7621	2015-10-13	2016-10-12
9*6*6 Anechoic	SAEMC	L×W×H 9×6×6	A002	2015-08-21	2016-08-20
RF cable	H+S	SUCOFLEX 102	R002	2015-08-19	2016-08-18
Horn Antenna	SCHWARZBECK	BBHA 9170	1123	2015-08-19	2016-08-18

5. ANTENNA REQUIREMENTS

5.1 STANDARD APPLICABLE

According to FCC Part 15.203, an intentional radiator shall be designed to ensure that no antenna other than that furnished by the responsible party shall be used with the device. The use of a permanently attached antenna or of an antenna that uses a unique coupling to the intentional radiator shall be considered sufficient to comply with the provisions of this section.

5.2 TEST RESULT

This product has an PCB antenna, fulfill the requirement of this section.

6. CONDUCTED EMISSIONS MEASUREMENT

6.1 POWER LINE CONDUCTED EMISSION LIMITS (Frequency Range 150KHz-30MHz)

The specification used was with the FCC Part 15.207 Limit.

FREQUENCY (MHz)	Class A (dBuV)		Class B (dBuV)		Standard
	Quasi-peak	Average	Quasi-peak	Average	
0.15 -0.5	79.00	66.00	66 - 56 *	56 - 46 *	FCC
0.50 -5.0	73.00	60.00	56.00	46.00	FCC
5.0 -30.0	73.00	60.00	60.00	50.00	FCC

Note:

- (1) The tighter limit applies at the band edges.
- (2) The limit of " * " marked band means the limitation decreases linearly with the logarithm of the frequency in the range.

The following table is the setting of the receiver

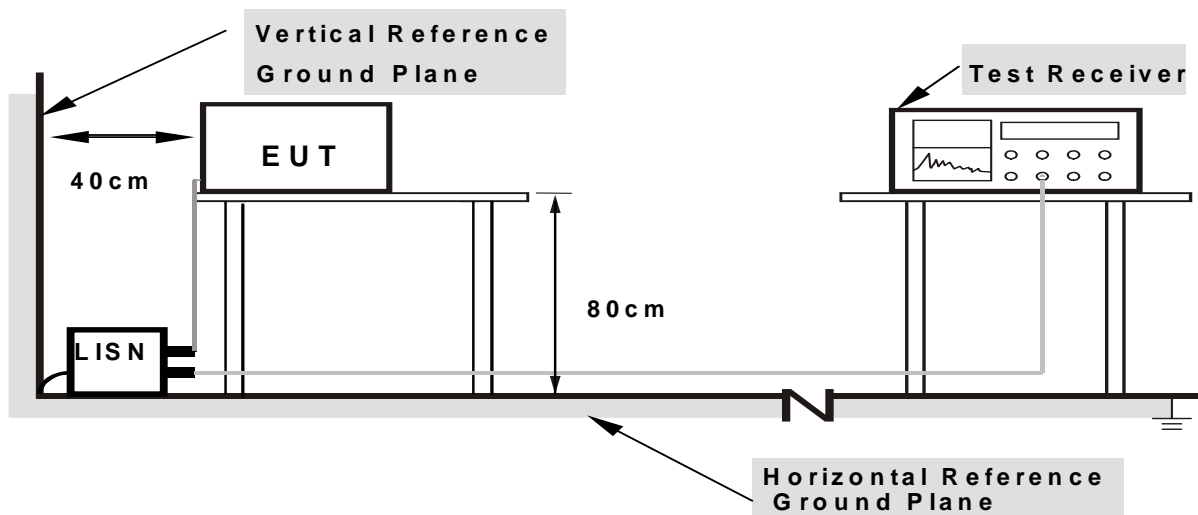
Receiver Parameters	Setting
Attenuation	10 dB
Start Frequency	0.15 MHz
Stop Frequency	30 MHz
IF Bandwidth	9 kHz

6.2 TEST PROCEDURE

The setup of EUT is according with per ANSI C63.4-2009 measurement procedure

- The EUT was placed 0.4 meters from the horizontal ground plane with EUT being connected to the power mains through a line impedance stabilization network (LISN). All other support equipments powered from additional LISN(s). The LISN provide 50 Ohm/ 50uH of coupling impedance for the measuring instrument.
- Interconnecting cables that hang closer than 40 cm to the ground plane shall be folded back and forth in the center forming a bundle 30 to 40 cm long.
- I/O cables that are not connected to a peripheral shall be bundled in the center. The end of the cable may be terminated, if required, using the correct terminating impedance. The overall length shall not exceed 1 m.
- LISN at least 80 cm from nearest part of EUT chassis.
- For the actual test configuration, please refer to the related Item –EUT Test Photos.

6.3 TEST SETUP



- Note:**
- Support units were connected to second LISN.
 - Both of LISNs (AMN) are 80 cm from EUT and at least 80 cm from other units and other metal planes

6.4 ENVIRONMENTAL CONDITIONS

Temperature:	24 °C
Relative Humidity:	60 %
ATM Pressure:	1012 mbar

6.5 TEST RESULTS

The EUT is supplied by 3.0V from AAA battery, so Conducted Emission is not applicable.

7. RADIATED EMISSION MEASUREMENT

7.1 RADIATED EMISSION LIMITS

According to §15.249(a), the field strength of emissions from intentional radiators operated within these frequency bands shall comply with the following:

Fundamental Frequency	Field strength of fundamental (milli-volts/meter)	Field strength of Harmonics (micro-volts/meter)
902-928 MHz	50	500
2400-2483.5 MHz	50	500
5725-5875 MHz	50	500
24.0-24.25 GHz	250	2500

As per FCC§15.249 (c), Field strength limits are specified at a distance of 3 meters.

(d) Emissions radiated outside of the specified frequency bands, except for harmonics, shall be attenuated by at least 50 dB below the level of the fundamental or to the general radiated emission limits in §15.209, whichever is the lesser attenuation.

Frequencies (MHz)	Field Strength (micorvolts/meter)	Measurement Distance (meters)
0.009~0.490	2400/F(KHz)	300
0.490~1.705	24000/F(KHz)	30
1.705~30.0	30	30
30~88	100	3
88~216	150	3
216~960	200	3
Above 960	500	3

The emission limit in this paragraph is based on measurement instrumentation employing an average detector. The provisions in §15.35 for limiting peak emissions apply. Spurious Radiated Emissions measurements starting below or at the lowest crystal frequency.

Emissions radiated outside of the specified frequency bands, except for harmonics, shall be attenuated by at least 50 dB below the level of the fundamental or to the general radiated emission limits in Section 15.209, whichever is the lesser attenuation.

7.2 TEST EQUIPMENT SETUP

During the radiated emission test, the EMI test receiver & Spectrum Analyzer Setup were set with the following configurations:

Spectrum Parameter	Setting
Attenuation	Auto
Start Frequency	1000 MHz
Stop Frequency	10th carrier harmonic
RB / VB (emission in restricted band)	1 MHz / 1 MHz for Peak, 1 MHz / 10Hz for Average

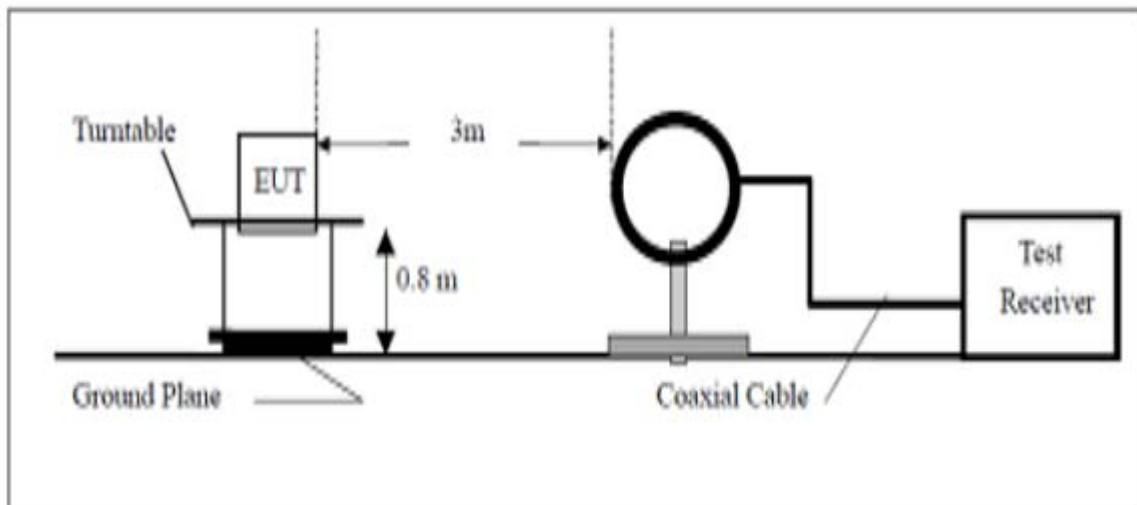
Receiver Parameter	Setting
Attenuation	Auto
Start ~ Stop Frequency	9kHz~150kHz / RB 200Hz for QP
Start ~ Stop Frequency	150kHz~30MHz / RB 9kHz for QP
Start ~ Stop Frequency	30MHz~1000MHz / RB 120kHz for QP

7.3 TEST PROCEDURE

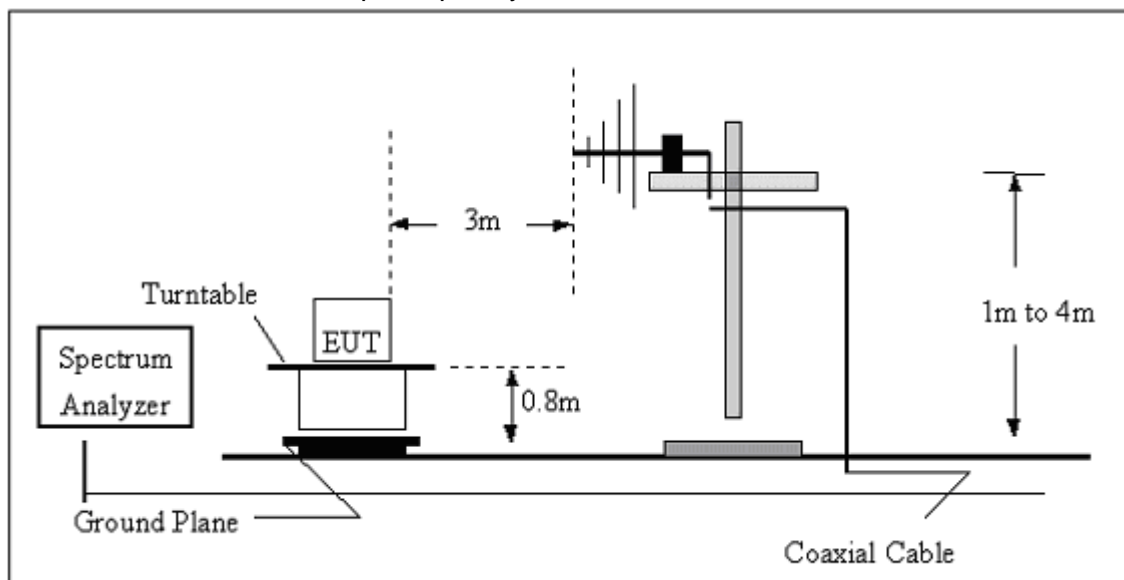
- a. The measuring distance of at 3 m shall be used for measurements at frequency up to 1GHz. For frequencies above 1GHz, any suitable measuring distance may be used.
- b. The EUT was placed on the top of a rotating table 0.8 meters above the ground at a 3 meter open area test site. The table was rotated 360 degrees to determine the position of the highest radiation.
- c. The height of the equipment or of the substitution antenna shall be 0.8 m; the height of the test antenna shall vary between 1 m to 4 m. Both horizontal and vertical polarizations of the antenna are set to make the measurement.
- d. The initial step in collecting conducted emission data is a spectrum analyzer peak detector mode pre-scanning the measurement frequency range. Significant peaks are then marked and then Quasi Peak detector mode re-measured.
- e. If the Peak Mode measured value compliance with and lower than Quasi Peak Mode Limit, the EUT shall be deemed to meet QP Limits and then no additional QP Mode measurement performed.
- f. For the actual test configuration, please refer to the related Item –EUT Test Photos.

7.4 TEST SETUP

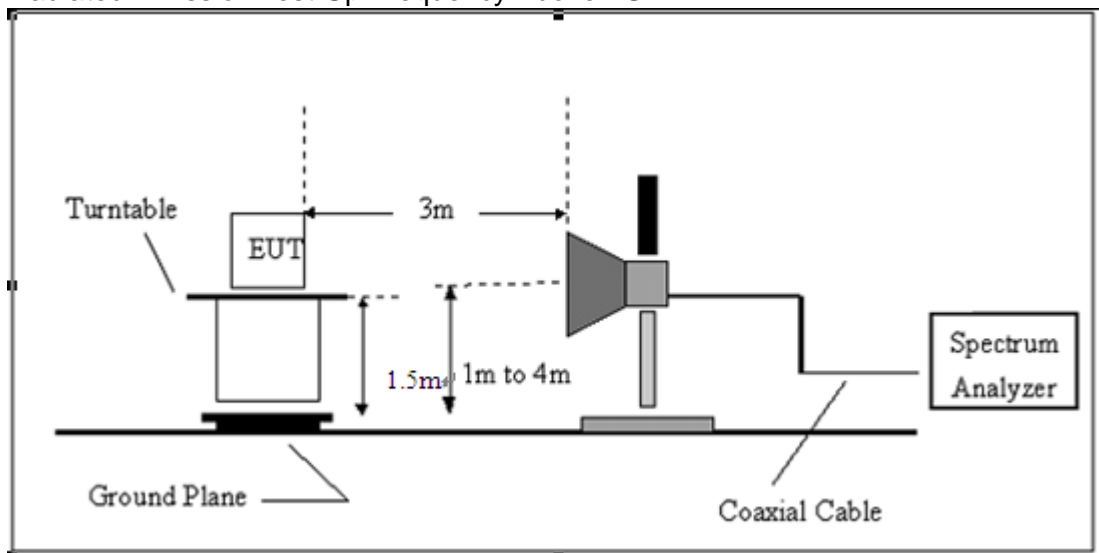
(A) Radiated Emission Test-Up Frequency Below 30MHz



(B) Radiated Emission Test-Up Frequency 30MHz~1GHz



(C) Radiated Emission Test-Up Frequency Above 1GHz



7.5 ENVIRONMENTAL CONDITIONS

Temperature:	25 °C
Relative Humidity:	57 %
ATM Pressure:	1012 mbar

7.6 TEST RESULTS

Field Strength of Fundamental

Frequency	Reading	Correct Factor	Emission Level	Limit	Margin	Polar	Detector
(MHz)	(dBuV/m)	dB/m	(dBuV/m)	(dBuV/m)	(dB)	H/V	
2405	93.09	-8.67	84.42	114	-29.58	H	PK
2405	92.04	-8.67	83.37	94	-10.63	H	AV
2430	93.37	-8.4	84.97	114	-29.03	H	PK
2430	91.25	-8.4	82.85	94	-11.15	H	AV
2470	94.50	-8.25	86.25	114	-27.75	H	PK
2470	91.04	-8.25	82.79	94	-11.21	H	AV
2405	93.34	-8.67	84.67	114	-29.33	V	PK
2405	89.10	-8.67	80.43	94	-13.57	V	AV
2430	95.22	-8.4	86.82	114	-27.18	V	PK
2430	91.46	-8.4	83.06	94	-10.94	V	AV
2470	92.62	-8.25	84.37	114	-29.63	V	PK
2470	89.69	-8.25	81.44	94	-12.56	V	AV

Note:

1. Correction Factor= Antenna Factor + Cable loss - Pre-amplifier; Emission Level=Peak Reading + Correction Factor; Margin=Emission Level - Limit.

Spurious Emissions

Frequency Range (9 kHz-30MHz)

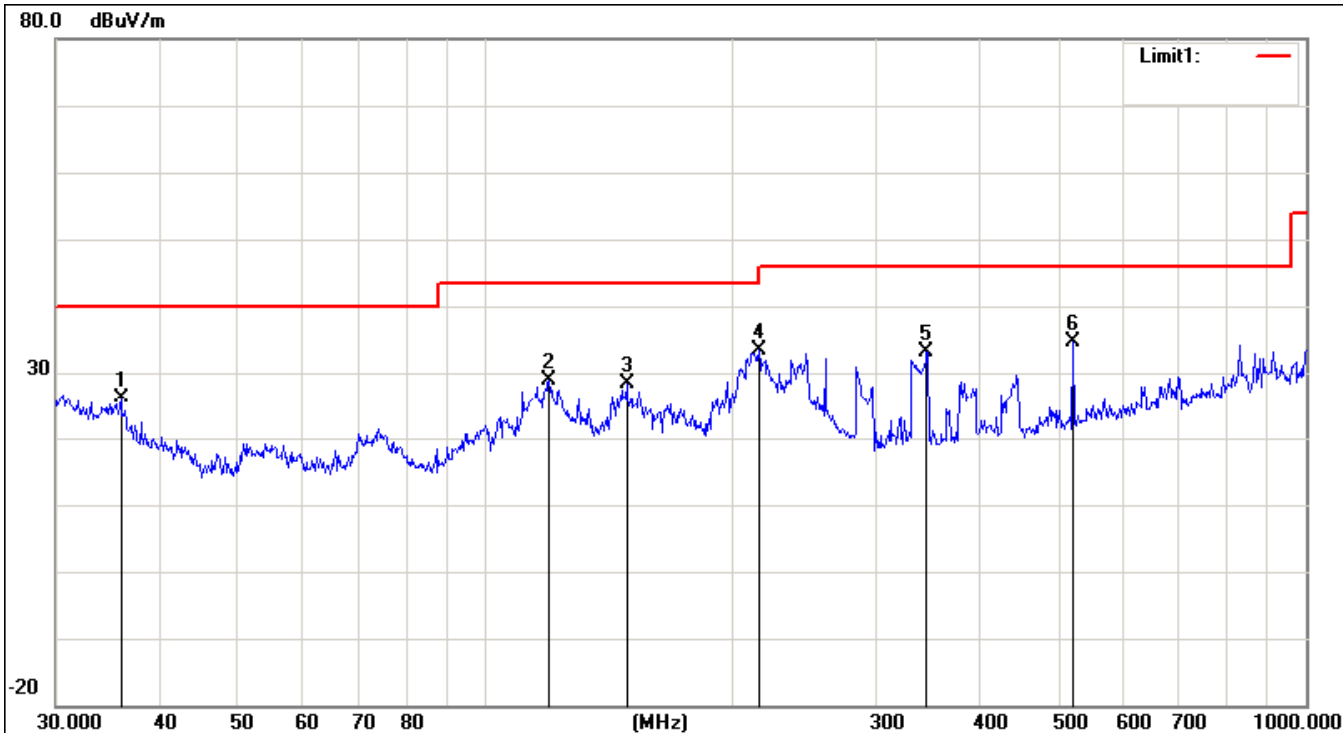
Freq.	Emission Level	Limit	Margin	State
(MHz)	(dBuV/m)	(dBuV/m)	(dB)	P/F
--	--	--	--	P
--	--	--	--	P

Note:

1. *Emission Level=Reading+ Cable loss-Antenna factor-Amp factor*
2. *The emission levels are 20 dB below the limit value, which are not reported. It is deemed to comply with the requirement.*

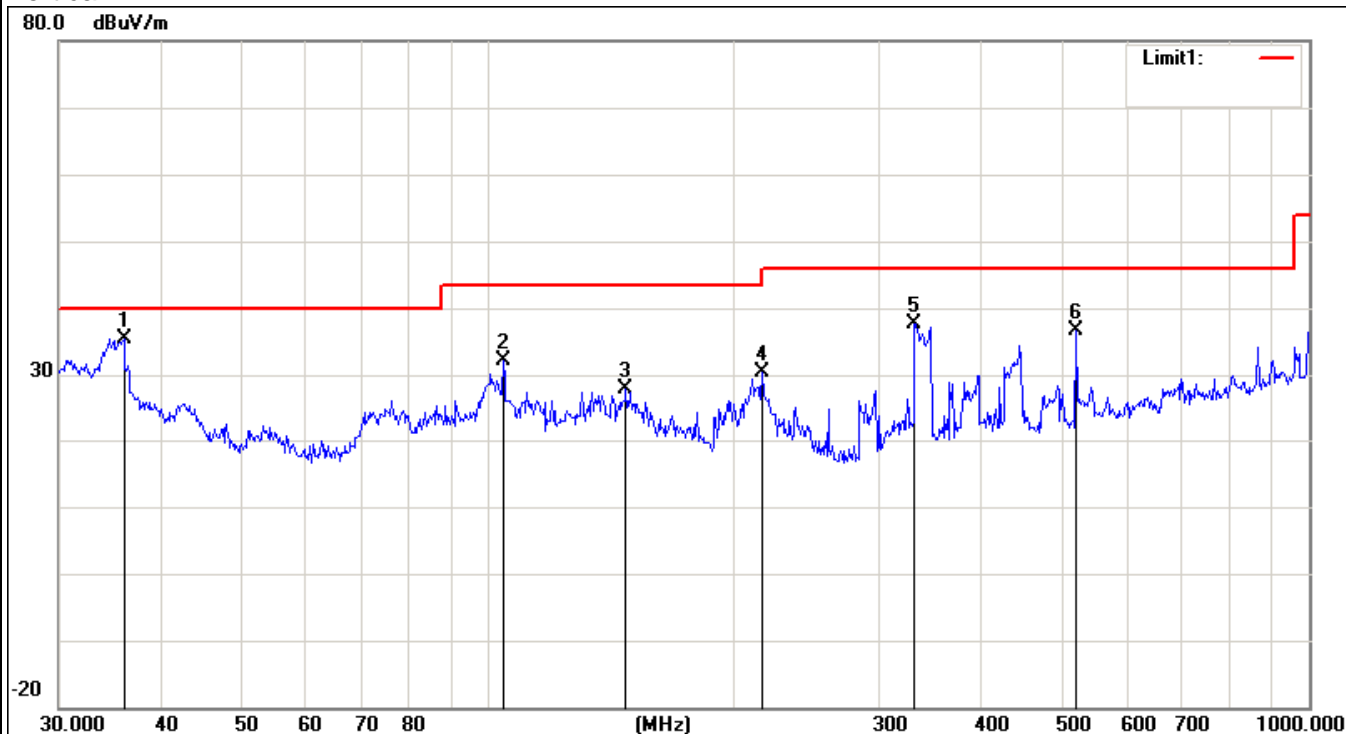
Frequency Range (30MHz-1000MHz)

Horizontal:



No.	Mk.	Freq. MHz	Reading Level dBuV	Correct Factor dB	Measure- ment dBuV/m	Limit dBuV/m	Over dB	Detector
1		36.0007	26.85	-0.60	26.25	40.00	-13.75	peak
2		119.4361	31.25	-2.37	28.88	43.50	-14.62	peak
3		148.4410	32.18	-3.71	28.47	43.50	-15.03	peak
4		216.0240	38.80	-5.39	33.41	46.00	-12.59	peak
5		345.5952	37.56	-4.37	33.19	46.00	-12.81	peak
6	*	520.8882	35.21	-0.63	34.58	46.00	-11.42	peak

Vertical:



No.	Mk.	Freq. MHz	Reading Level dBuV	Correct Factor dB	Measure- ment dBuV/m	Limit dBuV/m	Over dB	Detector
1	*	36.0007	36.03	-0.60	35.43	40.00	-4.57	peak
2		104.1701	37.34	-5.18	32.16	43.50	-11.34	peak
3		146.8877	31.40	-3.56	27.84	43.50	-15.66	peak
4		216.0240	35.76	-5.39	30.37	46.00	-15.63	peak
5		331.3546	42.46	-4.74	37.72	46.00	-8.28	peak
6		520.8882	37.36	-0.63	36.73	46.00	-9.27	peak

Note:

Measurements were conducted in all channels (high, middle, low), and the worst case (low channel) was submitted only.

Frequency Range (Above 1G)

Frequency	Reading	Correct Factor	Emission Level	Limit	Margin	Polar	Detector
(MHz)	(dBuV/m)	dB/m	(dBuV/m)	(dBuV/m)	(dB)	H/V	
Low Channel-2405MHz							
4810	59.66	-1.29	58.37	74	-15.63	H	PK
4810	41.61	-1.29	40.32	54	-13.68	H	AV
7215	50.89	6.51	57.40	74	-16.60	H	PK
7215	30.63	6.51	37.14	54	-16.86	H	AV
4810	58.58	-1.29	57.29	74	-16.71	V	PK
4810	42.29	-1.29	41.00	54	-13.00	V	AV
7215	44.16	6.51	50.67	74	-23.33	V	PK
7215	31.37	6.51	37.88	54	-16.12	V	AV
Middle Channel-2430MHz							
4860	58.45	-0.98	57.47	74	-16.53	H	PK
4860	43.57	-0.98	42.59	54	-11.41	H	AV
7290	44.29	6.83	51.12	74	-22.88	H	PK
7290	32.30	6.83	39.13	54	-14.87	H	AV
4860	57.08	-0.98	56.10	74	-17.90	V	PK
4860	43.15	-0.98	42.17	54	-11.83	V	AV
7290	42.05	6.83	48.88	74	-25.12	V	PK
7290	32.06	6.83	38.89	54	-15.11	V	AV
High Channel-2470MHz							
4940	56.51	-0.8	55.71	74	-18.29	H	PK
4940	43.35	-0.8	42.55	54	-11.45	H	AV
7410	42.35	6.94	49.29	74	-24.71	H	PK
7410	32.92	6.94	39.86	54	-14.14	H	AV
4940	58.80	-0.8	58.00	74	-16.00	V	PK
4940	41.84	-0.8	41.04	54	-12.96	V	AV
7410	44.90	6.94	51.84	74	-22.16	V	PK
7410	32.64	6.94	39.58	54	-14.42	V	AV

Note:

1. Correction Factor= Antenna Factor + Cable loss - Pre-amplifier; Emission Level=Peak Reading + Correction Factor; Margin=Emission Level - Limit.

2. The emission levels of other frequencies are very lower than the limit and not show in test report.

3. Measurements were conducted from 1 GHz to the 10th harmonic of highest fundamental frequency.

OUT OF BAND EMISSION

Frequency	Reading	Correct Factor	Emission Level	Limit	Margin	Polar	Detector
(MHz)	(dBuV/m)	dB/m	(dBuV/m)	(dBuV/m)	(dB)	H/V	
Low Channel-2405MHz							
2390	69.25	-8.73	60.52	74	-13.48	H	PK
2390	48.88	-8.73	40.15	54	-13.85	H	AV
2390	67.59	-8.73	58.86	74	-15.14	V	PK
2390	51.00	-8.73	42.27	54	-11.73	V	AV
High Channel-2470MHz							
2483.5	69.36	-8.17	61.19	74	-12.81	H	PK
2483.5	48.90	-8.17	40.73	54	-13.27	H	AV
2483.5	65.56	-8.17	57.39	74	-16.61	V	PK
2483.5	45.42	-8.17	37.25	54	-16.75	V	AV

Note:

1. Correction Factor= Antenna Factor + Cable loss - Pre-amplifier; Emission Level=Peak Reading + Correction Factor; Margin=Emission Level - Limit.
2. The emission levels of other frequencies are very lower than the limit and not show in test report.
3. Measurements were conducted from 1 GHz to the 10th harmonic of highest fundamental frequency.

8. 20DB OCCUPIED BANDWIDTH

8.1 STANDARD APPLICABLE

According to 15.215 (c), intentional radiators operating under the alternative provisions to the general emission limits, as contained in §§15.217 through 15.257 and in Subpart E of this part, must be designed to ensure that the 20 dB bandwidth of the emission, or whatever bandwidth may otherwise be specified in the specific rule section under which the equipment operates, is contained within the frequency band designated in the rule section under which the equipment is operated. The requirement to contain the designated bandwidth of the emission within the specified frequency band includes the effects from frequency sweeping, frequency hopping and other modulation techniques that may be employed as well as the frequency stability of the transmitter over expected variations in temperature and supply voltage. If a frequency stability is not specified in the regulations, it is recommended that the fundamental emission be kept within at least the central 80% of the permitted band in order to minimize the possibility of out-of-band operation.

8.2 TEST PROCEDURE

According to the ANSI 63.4-2009, the emission bandwidth test method as follows.

1. According to the follow Test-setup, keep the relative position between the artificial antenna and the EUT.

2. Set to the maximum power setting and enable the EUT transmit continuously.

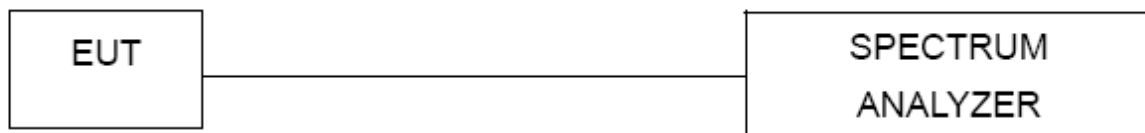
3. Use the following spectrum analyzer settings for 20dB Bandwidth measurement.

Span = approximately 2 to 3 times the 20 dB bandwidth, centered on a hopping channel;

RBW \geq 1% of the 20 dB bandwidth; VBW \geq RBW; Sweep = auto; Detector function = peak; Trace = max hold.

4. Measure and record the results in the test report.

8.3 TEST SETUP

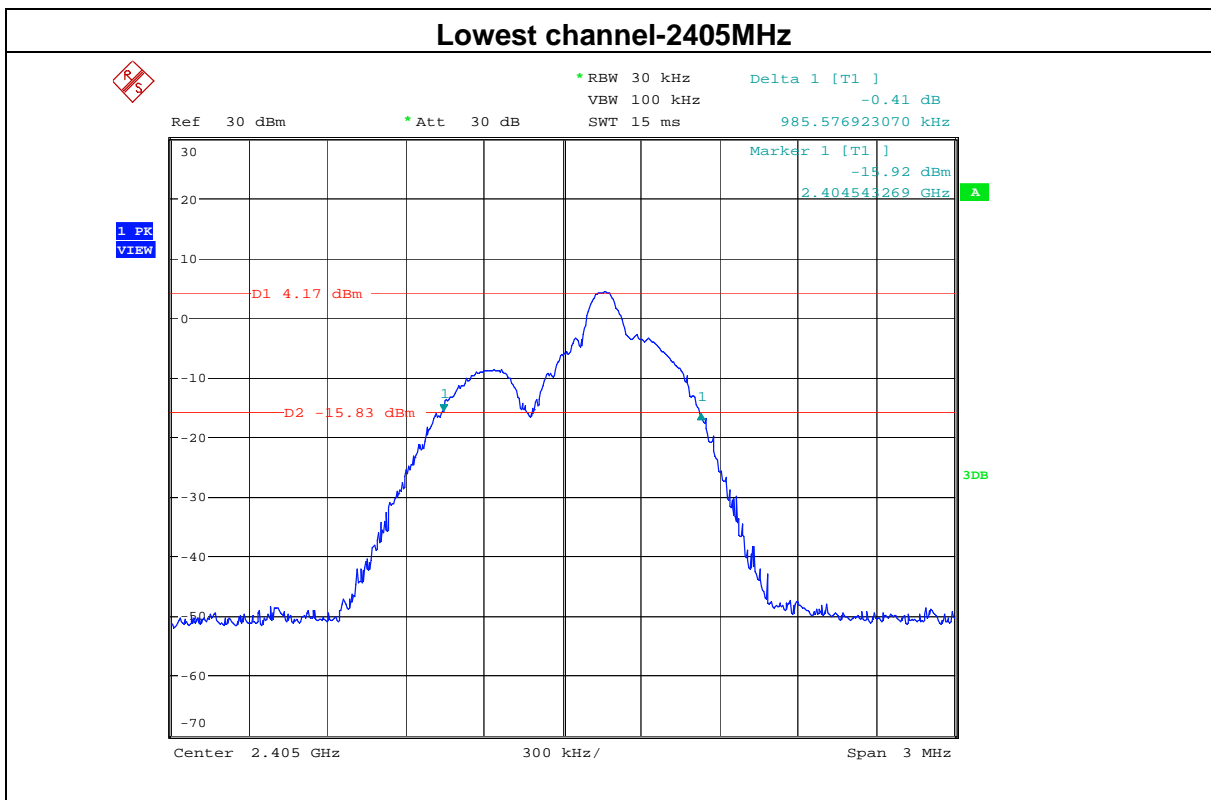


8.4 ENVIRONMENTAL CONDITIONS

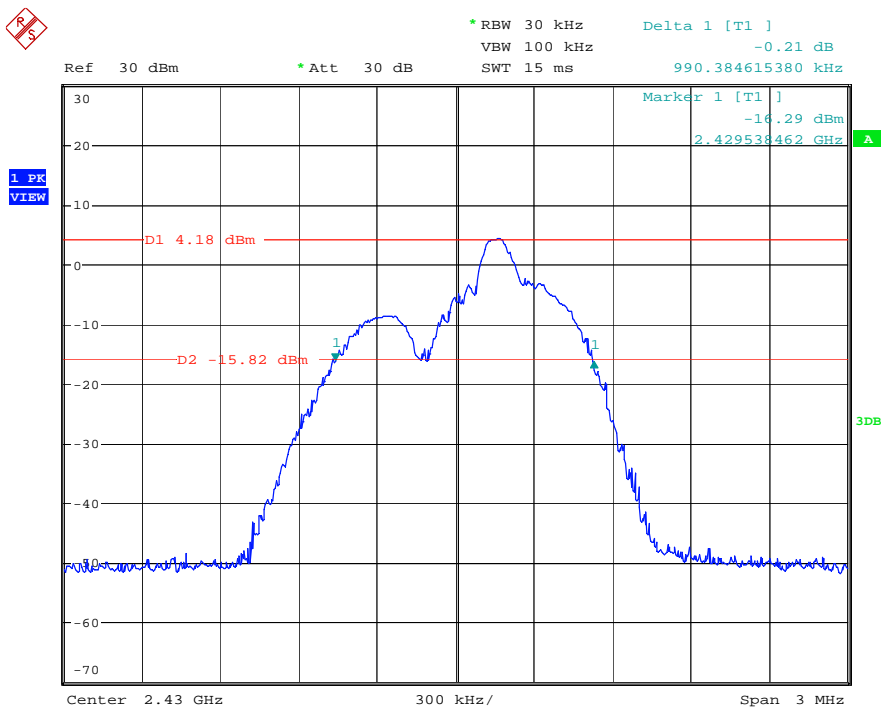
Temperature:	22 °C
Relative Humidity:	58 %
ATM Pressure:	1012 mbar

8.5 TEST RESULTS

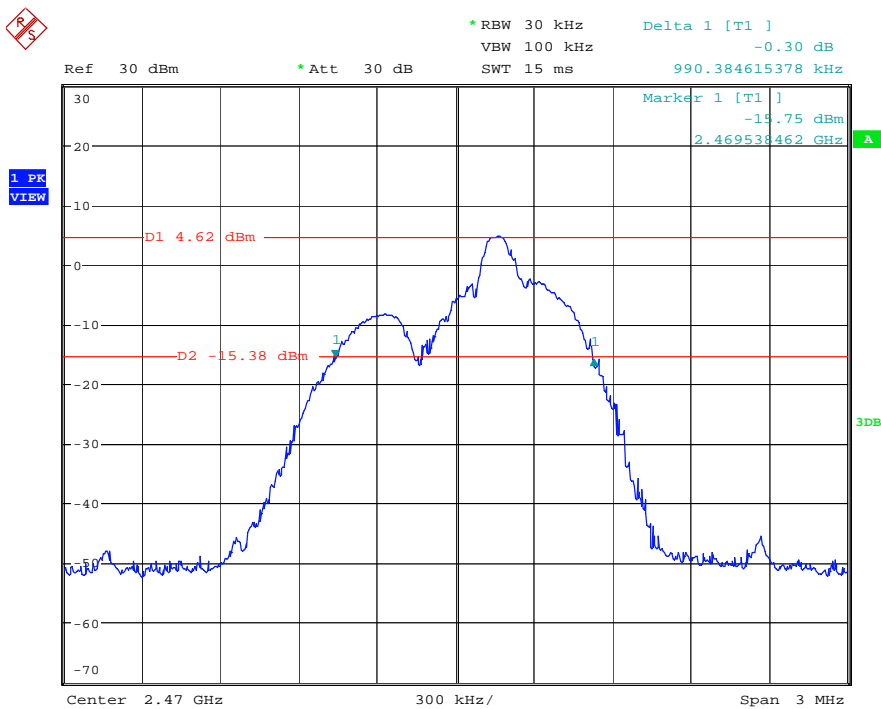
Frequency	20dB Bandwidth (kHz)	Result
2405 MHz	986	PASS
2430MHz	990	PASS
2470 MHz	990	PASS



Middle channel-2430MHz

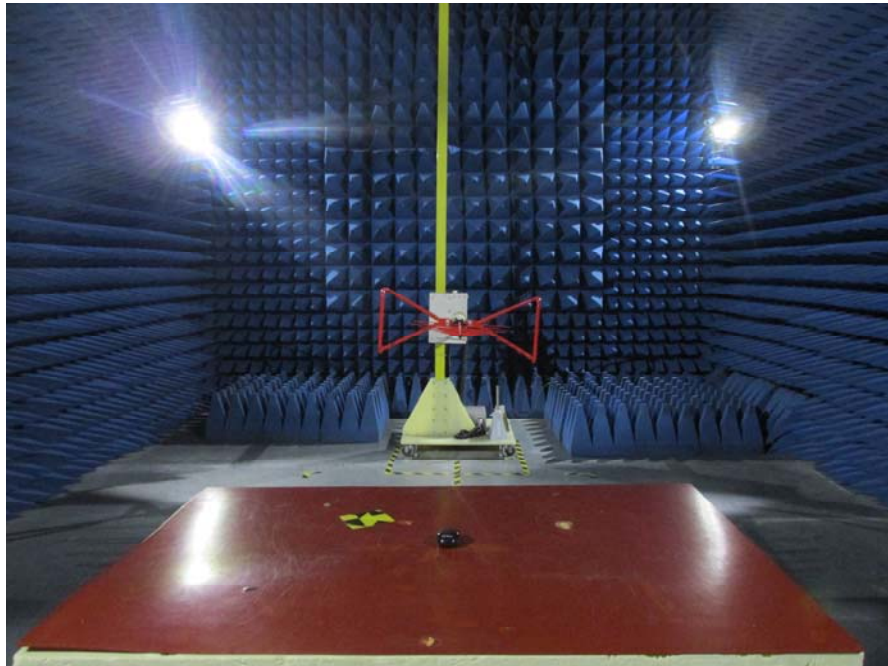


Highest channel-2470MHz

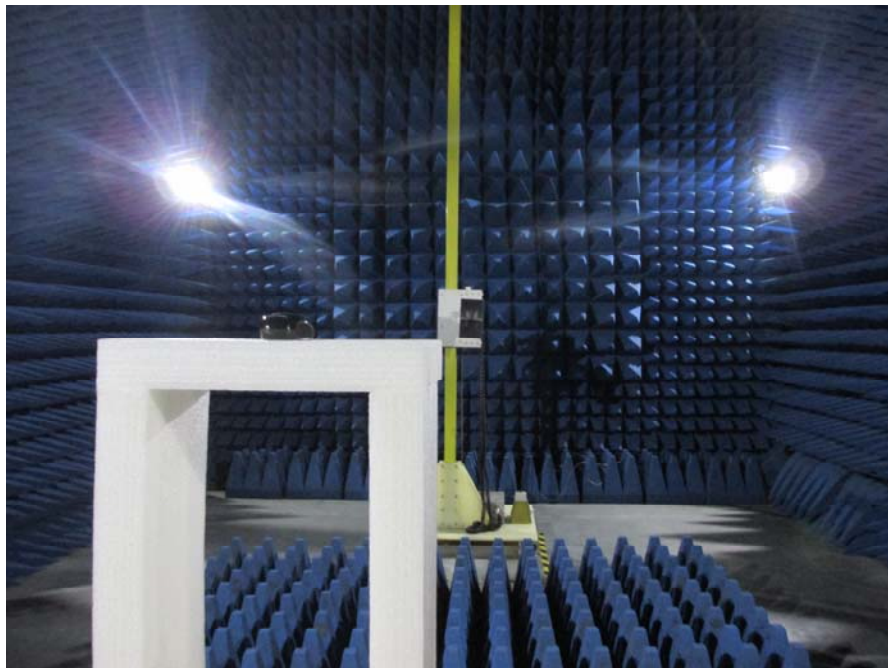


9. PHOTOGRAPHS OF TEST SETUP

RADIATED EMISSION TEST



RADIATED EMISSION TEST



RF TEST



10. PHOTOGRAPHS OF EUT

Appearance photograph of EUT



Appearance photograph of EUT



Appearance photograph of EUT



Appearance photograph of EUT



Appearance photograph of EUT



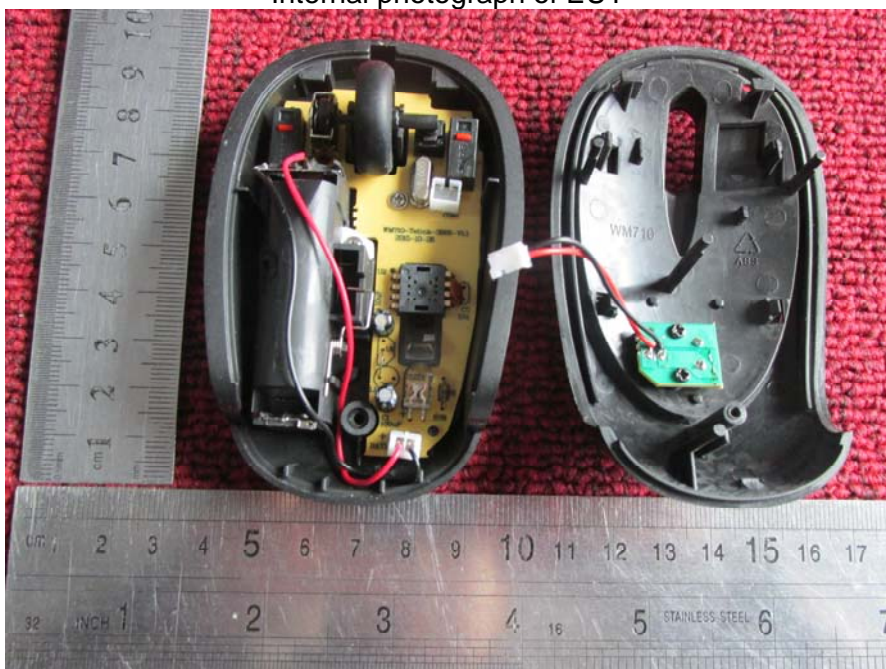
Appearance photograph of EUT



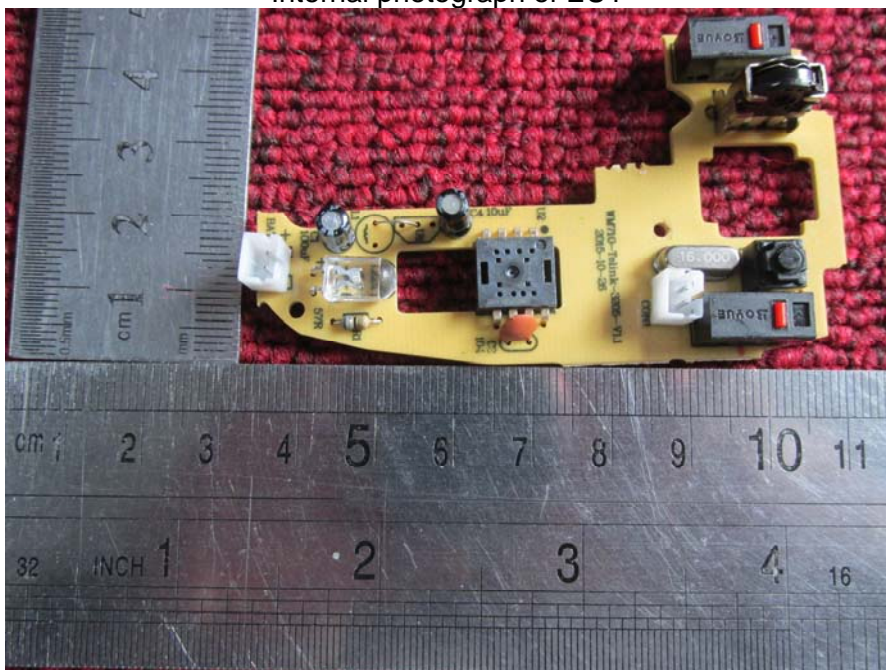
Appearance photograph of EUT



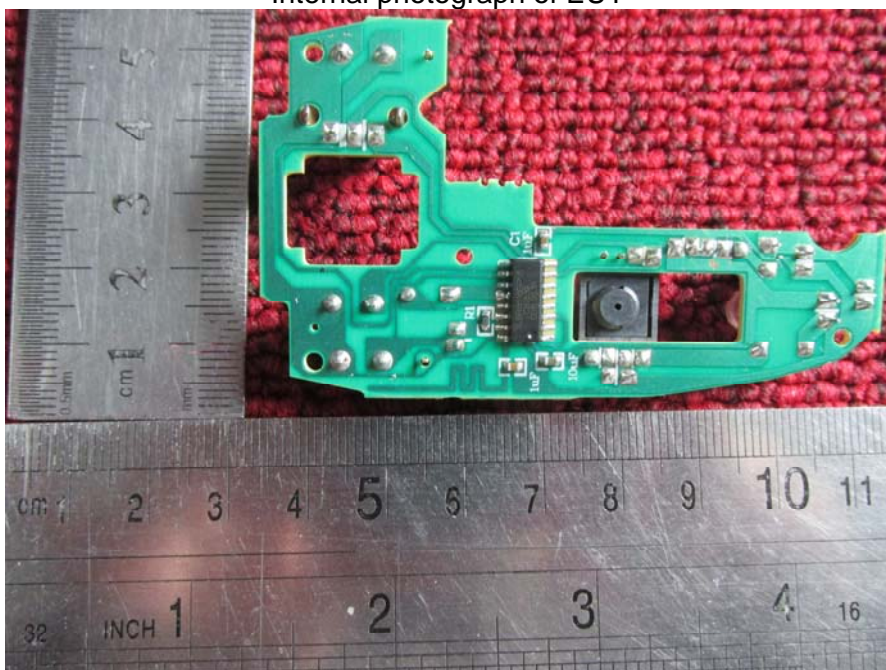
Internal photograph of EUT



Internal photograph of EUT



Internal photograph of EUT



—END OF REPORT—