

Quick Start Guide

Specifications

Dimensions(L x W x H):103*65*38mm

Buttons:3

Sensor Type:Optical

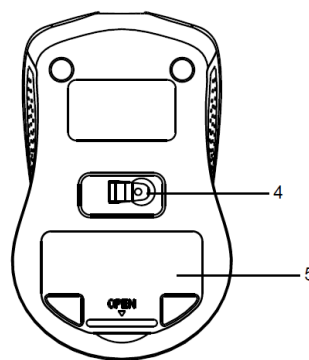
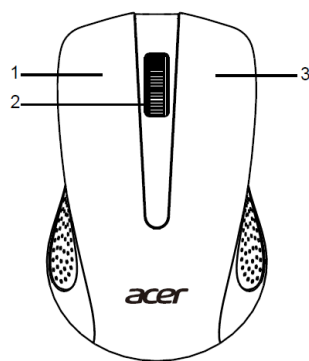
Connector DPI:1200

Weight:60g

Connector Type:USB

Model:AMR910

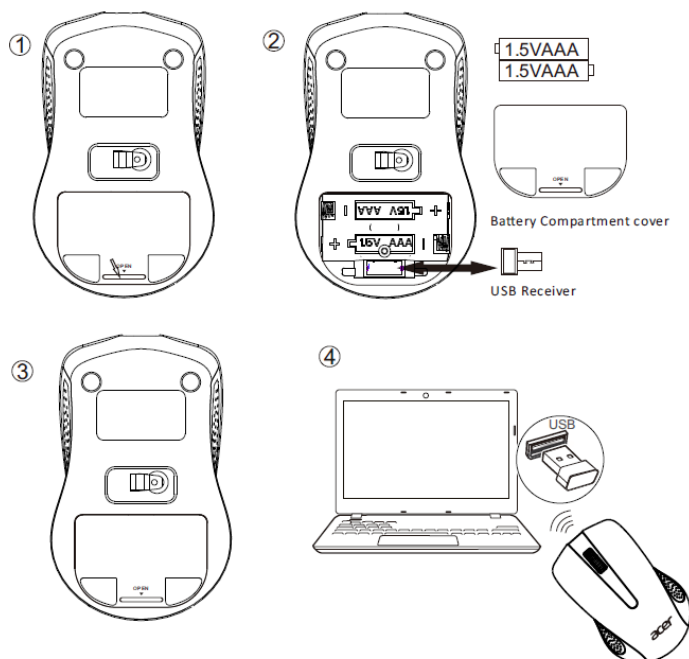
Device Features



1. Left button
2. Scroll wheel
3. Right button

4. Optical sensor
5. Battery cover

How to Use



1. Open the battery compartment cover at the bottom of the mouse; remove USB receiver.
2. Insert two AAA batteries into the battery compartment.
3. Replace the battery compartment cover.
4. Plug the USB receiver into one of your computer's USB ports.

Now you are ready to use the mouse.

Caution

- Do not disassemble the device or operate the device under abnormal conditions.
- Do not submerge the device in water.
- If the device could not be functional, or there was thermal abnormal situation, please re-plug in the USB.
- If you still encounter problems after going through the corrective measures, please contact your dealer or an authorized service center for assistance.
- For more information regarding the Acer accessories, please visit the Acer website at www.acer.com.

Environment

Temperature:

- Operating: 0 °C to 40 °C
- Non-operating: -10 °C to 60 °C

Humidity (non-condensing):

- Operating: 10% to 90%
- **Non-operating: 10% to 90%**

Manufacturer address

Acer Inc.

8F, 88, Sec. 1, Xintai 5th Rd. Xizhi, New Taipei City 221, Taiwan address

FCC STATEMENT :

This device complies with Part 15 of the FCC Rules. Operation is subject to the following two conditions:

- (1) This device may not cause harmful interference, and
- (2) This device must accept any interference received, including interference that may cause undesired operation. Warning: Changes or modifications not expressly approved by the party responsible for compliance could void the user's authority to operate the equipment.

NOTE: This equipment has been tested and found to comply with the limits for a Class B digital device, pursuant to Part 15 of the FCC Rules. These limits are designed to provide reasonable protection against harmful interference in a residential installation. This equipment generates uses and can radiate radio frequency energy and, if not installed and used in accordance with the instructions, may cause harmful interference to radio communications. However, there is no guarantee that interference will not occur in a particular installation. If this equipment does cause harmful interference to radio or television reception, which can be determined by turning the equipment off and on, the user is encouraged to try to correct the interference by one or more of the following measures:

- Reorient or relocate the receiving antenna.

- Increase the separation between the equipment and receiver. Connect the equipment into an outlet on a circuit different from that to which the receiver is connected.

- Consult the dealer or an experienced radio/TV technician for help.