



Always Wear Your Smile

## Bluetooth Sonic Vibration Toothbrush

声波电动牙刷，关注口腔健康

User Manual  
使用说明书

让你微笑自信面对每一天



## Smart Sonic Toothbrush

Changes or modifications not expressly approved by the party responsible for compliance could void the user's authority to operate the equipment.

This equipment has been tested and found to comply with the limits for a Class B digital device, pursuant to Part 15 of the FCC Rules. These limits are designed to provide reasonable protection against harmful interference in a residential installation. This equipment generates uses and can radiate radio frequency energy and, if not installed and used in accordance with the instructions, may cause harmful interference to radio communications. However, there is no guarantee that interference will not occur in a particular installation. If this equipment does cause harmful interference to radio or television reception, which can be determined by turning the equipment off and on, the user is encouraged to try to correct the interference by one or more of the following measures:

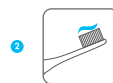
- Reorient or relocate the receiving antenna.
- Increase the separation between the equipment and receiver.
- Connect the equipment into an outlet on a circuit different from that to which the receiver is connected.
- Consult the dealer or an experienced radio/TV technician for help

This device complies with part 15 of the FCC rules. Operation is subject to the following two conditions (1) this device may not cause harmful interference, and (2) this device must accept any interference received, including interference that may cause undesired operation.

## 使用说明



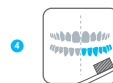
将声波刷头小心插在牙刷主体上（刷头和牙刷主体间留有一些间隙，这是牙刷头正常震动所必须的）



取适量牙膏涂在刷毛上（温馨提示：为防止牙膏飞溅，请将刷头放入口中后再启动牙刷）



按下启动按键开始刷牙，并可根据需要选择合适的牙齿清洁模式。



牙刷启动后每隔30秒有短停顿，以提醒使用者切换口腔清洁区域。牙刷启动2分钟牙刷自动停止工作。（使用者可根据需要重新启动牙刷延长刷牙时间）刷完牙后可用清水冲洗牙刷，以保持牙刷卫生。

## 安全注意事项

- 禁止**
- 本产品不宜肢体、感官或精神上残疾者，或者缺乏经验和知识者（包括儿童）单独使用。儿童请在监护人监督指导下使用。
  - 请勿自行改造、拆卸或修理本产品。
  - 如发生异常和故障，请立即停止使用。在这种情况下使用本产品可能导致意外受伤。
  - 请勿将牙刷主体长期浸泡在水中或者其它液体中。
  - 请勿将牙刷和充电座放置在太阳直射处暴晒，宜存放在干燥通风处。
  - 充电时，请勿在充电座周围10厘米内放置金属物体，如硬币等。
- 警告**
- 请勿存放在儿童和婴幼儿的接触范围之内，否则可能引起事故和受伤。
  - 本产品只适应于清洁牙齿、牙龈与舌头，请勿用作其它用途。用后若感到任何不适，请停止使用。
  - 如果您在使用本牙刷后有出血状况，或出血状况延续超过一星期，请向您的牙医咨询。
  - 患有严重牙周炎、牙齿正在接受治疗、或是口腔内不适症状的人士在使用前应咨询牙科医生，否则可能会对牙齿和牙龈造成伤害。
  - 本产品符合电磁装置的安全标准，任何有关涉及心脏起搏器或其它植入装置的问题，请在使用前咨询医生。
  - 请勿使用非制造商推荐的充电底座和牙刷刷头。
  - 本产品充电时请远离强电磁场（如电磁炉）

02

## 功能介绍

### 启动键

短按一次启动键，启动牙刷。使用过程中每按一次启动键则更换刷牙清洁模式。长按1秒则牙刷停止工作。

### Clean

洁净模式，清除口腔内食物残渣及普通牙刷不能清洁的牙垢。适合普通人群日常使用。

### White

美白模式，有效改善牙渍、烟渍、咖啡渍等各类顽渍，令牙齿健康亮白。适合特定需求人群使用。

### Polish

抛光模式，打磨齿面，使牙齿更光洁亮丽。

### Soft

温和模式，轻柔清除牙齿污垢，清洁牙齿的同时呵护牙龈。适合牙齿敏感人群，老年人及青少年日常使用。

### Sensitive

敏感模式，呵护敏感牙龈，保护牙龈不出血。

电量指示灯：电量正常--不亮，电量不足--红灯闪烁，充满--白灯长亮

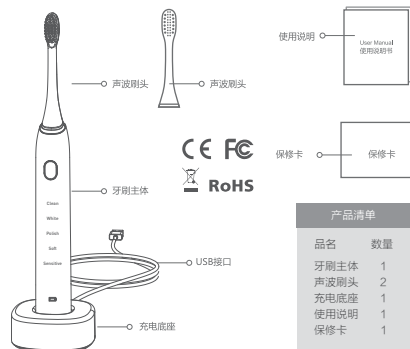
注意：当在工作中，插入充电座，电机停止工作，进入充电状态。充电时，按键操作无效。



03

## 产品规格及清单

充电方式：无线充电
牙刷额定电压：3.7V
牙刷额定功率：2.0W
充电座额定输入：DC5V/400MA
充电时间：约8个小时
续航时间：每天使用4分钟，可使用30天



04

## 充电说明

### 电量不足

在使用过程中，当位于牙刷主体的电量指示灯持续呈红灯闪烁时，表示该牙刷电量不足，需要充电，当电量用完，牙刷无法启动，电量指示灯不亮。

### 充电

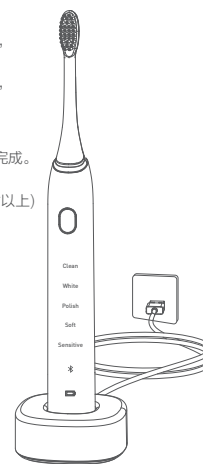
请将牙刷主体放置在充电底座上，并确认充电底座已接通电源。电量指示灯白灯连续短促闪烁时，表示正在充电。

### 充电完成

当电量指示灯长亮时，表示充电完成。  
(为了将电池发挥最大能效，首次使用请将电池充电12个小时以上)

### 充电安全注意事项

- 请勿使用非制造商推荐的
- 充电底座。请勿使用与充电底座额定输入规格要求不符的电源适配器或其它电源，否则可能因短路引发火灾或发生触电。
- 请勿用湿手将电源适配器连接到家用电源插座中，否则可能发生触电或受伤。



05

## 牙刷保养



### 清洁刷头

每次刷牙后可用清水冲洗刷头。



### 清洗牙刷主体

可用清水冲洗，并自然风干。请勿将牙刷主体长期浸泡在水中。切勿使用高温水或其它具有腐蚀性的液体清洗牙刷主体。



### 清洗充电底座

用软布将污垢擦拭干净。清洗充电底座前，务必将充电底座的USB接口从电源上拔出。



### 更换刷头

牙医建议每三个月更换一次刷头。请使用本产品指定的专用刷头。蓝色刷毛颜色逐渐变淡，提示需要更换。

## 智能口腔护理向导



- Teethcare声波震动牙刷支持蓝牙功能，您可以借助Teethcare应用程序达到更理想的口腔护理效果。
- 通过使用Teethcare应用程序，可以帮助您进一步改善口腔护理习惯。

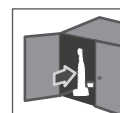


- 刷牙区域实时监测
- 智能刷牙提醒
- 刷牙时长设置



1. 刷牙区域实时监测。
2. 根据您的刷牙情况分析出漏刷的部位并进行及时提醒长期跟踪您的刷牙行为并提供实用的护牙技巧和连接牙刷APP。
3. 从Apple App Store或其他安卓市场下载Teethcare应用程序。
4. 打开应用程序之前，请先确认您移动设备上的蓝牙已打开。
5. 打开Teethcare应用程序。
6. 要连接牙刷与应用程序，按照您移动设备上显示的Teethcare应用程序说明进行操作。

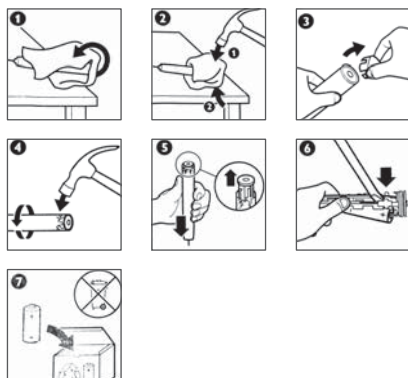
注意：为了更好地获取数据，请您在刷牙时靠近移动设备。



### 储藏您的声波电动牙刷

如果您长时间不使用您的电动牙刷，充电底座请不要连接电源，并且清洁所有部件，保存在阴凉干燥的地方，避免阳光直射。

### 旧物丢弃



丢掉牙刷时请不要同普通废弃物一样丢进垃圾桶，而是丢到官方指定的回收垃圾桶，这样有利于保护环境。内置可充电电池含有可能污染环境的物质，在丢弃电池前要先取出电池，为了取出充电电池，你需要一个平头（标准）螺丝刀。并且遵守下列基本安全措施。在取出电池的过程中，一定要保护好您的手、手指和眼睛。

### 牙刷参数

防水等级	IPX7
功能操作	物理按键
材质	主机材质: PC+ABS+UV
产品尺寸	主机: 27.8*27.8*248.6mm 充电座: 65.6*65.6*26.3mm
产品重量	主机: 115g、充电座: 100g
颜色	黑色、白色
充电方式	无线充电
充电时长	约8小时
电池容量	800mAh
使用时长	一个月（按每天4分钟计算）
刷牙模式	洁净模式 美白模式 抛光模式 温和模式 敏感模式

## 产品保修卡

感谢您选用声波电动牙刷，为了使我们的服务让您满意，在购买后请您认真阅读此说明并妥善保管。

1. 本产品保修1年，自购买之日起计算。
2. 在保修期内，凡正常使用情况下出现产品质量问题，您将获得免费保修服务。
3. 此免费服务不包括需要时常更换的易耗零配件，如刷头。
4. 保修时，请出示保修卡，以及能证明购买时间的凭证。请妥善保管保修卡。
5. 以下情况将不能获得免费保修服务：
  - a) 自购买日起，超过1年。
  - b) 无保修卡。
  - c) 未按说明书要求操作引起的故障和人为损坏。
  - d) 因自行拆卸、维修或改装而引起的故障或人为损坏。
  - e) 正常使用引起的产品老化、磨损等，但不影响产品的正常使用

型号/Model 购买日期/Date of Purchase

顾客信息/Customer Information

姓名/Name:

电话/Telephone:

地址/Address:

如需此产品的售后服务，请联系相关售后人员

## IMPORTANT NOTICE:

Read all instructions carefully before use and save it for future reference.

### Danger

Keep the charging base away from water. Do not place or store it over near water contained in a bathtub, washbasin, etc. Do not immerse the charging base in water or any other liquid. After cleaning and make sure the charging base is completely dry before connect it to the mains.

### Warning

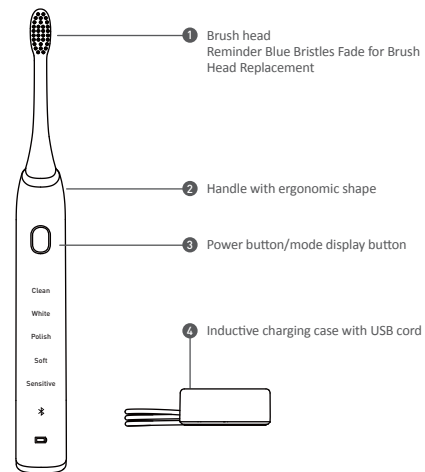
- Check the USB cord before you connect the local mains.
- Never use the charging base if it is damaged in any way. If the USB cable is damaged, always have it replaced with one of the original type in order to avoid a hazard.
- If the appliance is damaged in any way (included brush head, toothbrush handle), stop using it.
- Do not use the charging base near heated surface and Keep the appliance away from strong electromagnetic field when charging.
- This appliance can only be used by children aged from 18 years old and above and by persons with reduced physical, sensory or mental capabilities or lack of experience and knowledge if they have been given supervision or instructions concerning use of the appliance in a safe way and if they understand the hazard involved. Cleaning and user maintenance shall not be made by children unless they are older than 10 and supervised.
- Keep the appliance and its cable out of reach of children aged less than 10 years.
- Children shall not play with the appliance.
- Occur tickling or slight bleeding upon first use, this is normal status. It' s ease after 2 days and disappear absolutely within 1 or 2 weeks.

## Caution

- Do not clean the brush head, handle and charging base in the dishwasher.
- Do not use the toothbrush in the bath or shower.
- If you had oral or gum surgery in the previous 2 months, consult your dentist before using it.
- If you have medical concerns, consult your doctor before you use the appliance.
- The appliance complies with the safety standard for electromagnetic devices. If you have a pacemaker or other implanted device, consult your doctor before use.
- This appliance has only been designed for cleaning teeth, gums and tongue. Do not use it for any other purpose.
- The toothbrush is a personal care device, suggest to use for use on multiple patients in a dental practice or institution.
- Stop using a brush head with crushed or bent bristles. Replace the brush head every 3 months or sooner if signs of Bristles Fade appear.
- Do not use other brush heads instead of the ones recommended by the manufacturer.
- Supervise children while they are brushing until they have established good brushing habits.

02

## Product Components



03



## Smart Sonic Toothbrush

Waterproof	IPX7
Function Operation	Button Press
Outlook	Main body material: PC+ABS+UV Painting
Product Size	Main device : 27.8*27.8*248.6mm Charging base: 65.6*65.6*26.3mm
Product Weight	Main body about 115g Charging Base:100g
Color	Black, White
Charging Type	Wireless Charger
Charging Time	About 8 hours
Battery	Lithium rechargeable Battery
Capacity	800mAh
Battery Life	About 1 month (if use 4 minutes everyday)

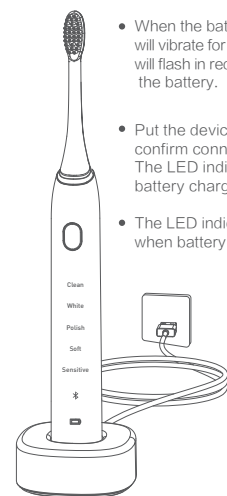
Brush Modes	<b>5 different modes, each mode will be lighted up when relevant mode function is on</b>
	Clean mode: 34800 brush strokes per minute
	White mode: 33000-40000 brush strokes per minute
	Polish Mode: 35000 brush strokes per minute
	Soft mode: 33000 brush strokes per minute
	Sensative mode: 28200 brush strokes per minute

Package Contents	2 Brush head 1 Handle with ergonomic shape 1 Wireless Charger 1 User Manual 1 Gift Box
------------------	--

04

## Battery Charging

- Charge for above 12hrs before first use. Please understand that wireless charging is comparably slow for the battery charging.



- When the battery power is low, the device will vibrate for 4 times and the LED indicator will flash in red to remind the user to charge the battery.
- Put the device into charging base and confirm connect power source correctly. The LED indicator flash in white during battery charging.
- The LED indicator light in white color when battery is fully charged.

05

## Functions of Smart Toothbrush

### Clean

The ultimate in the plaque removal

### White

Whitening mode of 2 minutes to remove surface stains, plus an additional 30 seconds to brighten and polish your front teeth.

### Polish

Dental polishing, whiten the teeth

### Soft

Extra gentle mode for sensitive teeth and gums

### Sensitive

Gentle teeth and gum cleaning

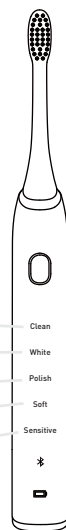
34800 times/minute

33000-40000 times/minute

35000 times/minute

33000 times/minute

28200 times/minute



06

## Instruction for Use



**01**

Put brush head into toothbrush body and make a certain gap between head and body



**02**

Take some toothpaste on the wet bristle



**03**

Smudge the toothpaste to teeth before use (Notice: launch toothbrush after put into mouth)



**04**

Change the cleaning area based on briefly pause during the brushing cycle (Notice: no need to left and right or upper and down to move after launched)

07

## APP Operation

Your Teethcare toothbrush is Bluetooth enabled and allows you to achieve superior oral health care with the Teethcare app.

Using the Teethcare app will help you to improve your oral health care habits. It gives you real-time feedback while brushing, informs you if you missed any spots when brushing, tracks your brushing behavior over time and provides useful tips and tricks for your healthiest mouth ever. In order to fully benefit from your Teethcare, we advise you to follow these steps:

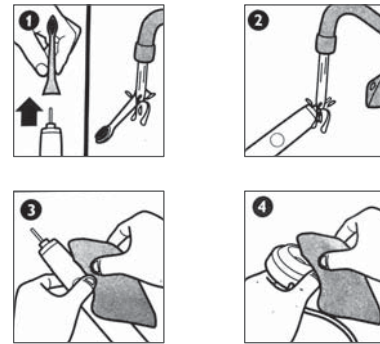
Connecting your toothbrush

1. Download the Teethcare app from the Apple App Store or Google Play Store.
2. Confirm Bluetooth is switched on on your mobile device before you open the app. Check the settings on your mobile device to switch on Bluetooth.
3. Open the Teethcare app.
4. To connect the toothbrush to the app, follow the Teethcare app instructions displayed on your mobile device, find the correct device name and choose it to connect.



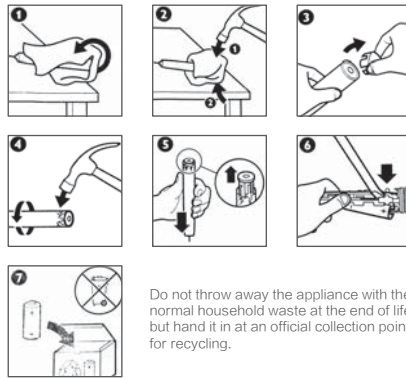
Note: For optimal data capture, keep your mobile device close during brushing.

## Cleaning Your Smart Toothbrush



Cleaning – Clean the Smart toothbrush periodically. Rinse the handle and the brush head. Wipe down all surfaces with a soft cloth and mild soap, if desired. Do not use sharp objects to clean. Do not clean the brush head, handle, charging base in the dishwasher.

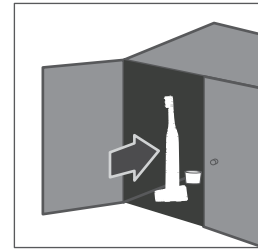
### Environment



Do not throw away the appliance with the normal household waste at the end of life, but hand it in at an official collection point for recycling.

By doing this, you help to preserve the environment. The built-in rechargeable battery contains substances that may pollute the environment. Always remove the battery before you discard and hand in the appliance at an official collection point. Removing the rechargeable battery. This process is not reversible. To remove the recharge battery, you need a flat-head (standard) screwdriver. Observe basic safety precautions when you follow the procedure above. Be sure to protect your eyes, hands, fingers and the surface on which you work.

### Storing Your Smart toothbrush



**Storing**– If you are not going to use it for an extended period of time, unplug the charging base, clean all parts and store them in a cool, dry place away from direct sunlight.

### Guarantee Restrictions

The terms of the international guarantee do not cover the following:

- Brush head.
- Damage caused by misuse, abuse, neglect, alterations to unauthorized repair.
- Normal wear and tear, including chips, scratches, abrasions, discoloration or fading