

User Manual

Outdoor HD IP Camera



Model: FC5511E



Model: FC5412P



Model: FC5413P

Table of Contents

Table of Contents.....	1
1 Overviews.....	1
1.1 Key Features.....	1
1.2 PoE (Power over Ethernet-FC5511E).....	2
1.3 Read Before Use.....	2
1.4 Packing Contents.....	2
1.5 Physical Description.....	3
1.5.1 Front Panel.....	3
1.5.2 Interface.....	4
1.5.3 Bottom View.....	5
2 Accessing the Network Camera.....	6
2.1 Access the Camera in LAN.....	6
2.2 Access the Camera in WAN.....	9
2.2.1 Static IP Addresses.....	9
2.2.2 Dynamic IP Addresses.....	11
2.3 Using the VLC player.....	14
2.4 IP camera connection to the server.....	16
3 Surveillance Software GUI.....	17
3.1 Login Window.....	17
3.2 Modify the Username and Password.....	18
3.3 Surveillance Window.....	18
4 Advanced Camera Settings.....	22
4.1 Device Status.....	22
4.1.1 Device Information.....	23
4.1.2 Device Status.....	23
4.1.3 Session status.....	24
4.1.4 Log.....	24
4.2 Basic Settings.....	25
4.2.1 Camera Name.....	25
4.2.2 Camera Time.....	25
4.2.3 User Accounts.....	26
4.2.4 Multi-Camera.....	29
4.3 Network.....	35
4.3.1 IP Configuration.....	35
4.3.2 Wireless Settings.....	37
4.3.3 PPPoE.....	38
4.3.4 DDNS.....	39
4.3.5 UPnP.....	42
4.3.6 Port.....	43
4.3.7 Mail Settings.....	47
4.3.8 FTP Settings.....	49
4.3.9 P2P.....	50

4.4 Video.....	51
4.4.1 Video Settings.....	51
4.4.2 On Screen Display.....	52
4.4.3 Privacy Zone.....	52
4.4.4 Snapshot Settings.....	53
4.4.5 IR LED Schedule.....	54
4.4.6 Lens Distortion Correction.....	55
4.5 Alarm.....	55
4.5.1 Motion Detection.....	55
4.6 Record.....	59
4.6.1 Storage Location.....	59
4.6.2 Local Alarm Location.....	59
4.6.3 Record Schedule.....	59
4.7 Firewall.....	60
4.8 System.....	61
4.8.1 Back-up& Restore.....	61
4.8.2 System Upgrade.....	61
4.8.3 Factory Reset.....	63
4.8.4 Reboot.....	63
5 APPENDIX.....	63
5.1 Frequently Asked Questions.....	63
5.1.1 How to install the plug-in for Safari	63
5.1.2 How to download and install the ActiveX for Firefox users.....	65
5.1.3 How to download and install the ActiveX for Google Chrome users.....	66
5.1.4 I have forgotten the administrator password.....	68
5.1.5 Subnet doesn't match.....	68
5.1.6 Camera can not record.....	68
5.1.7 No Pictures Problems.....	69
5.1.8 Can't access IP camera in internet.....	70
5.1.9 UPnP always failed.....	70
5.1.10 Camera can not connect wireless.....	70
5.1.11 Remove the plug-in.....	70
5.2 Default Parameters.....	73
5.3 Specification.....	73
5.4 CE & FCC.....	77

1 Overviews

The outdoor HD IP Camera is integrated IP Camera with a color CMOS sensor enabling viewing in High Definition resolution. It combines a high quality digital video camera, with a powerful web server, to bring clear video to your desktop from anywhere on your local network or over the Internet.

The IPCAM support the industry-standard H.264 compression technology, drastically reducing file sizes and conserving valuable network bandwidth.

Thanks to the P2P easy access technology, you don't need to do complicated Port Forwarding and DDNS settings, you just need to scan the QR code on the bottom of the camera to connect it on smart phone, or input the UID on CMS software to do remote access.

The IPCAM is based on the TCP/IP standard. There is a WEB server inside which could support Internet Explorer. Therefore the management and maintenance of your device is simplified by using the network to achieve the remote configuration and start-up.

The camera is designed for outdoor surveillance applications such as courtyards, supermarket, and school. Controlling the IPCAM and managing images are simplified by using the provided web interface across the network utilizing wireless connectivity.

The IPCAM provides Smart Phone APP for Android and iPhone users, please search and install **IPCam Viewer** on Google Play for Android devices, search and install **IPCam_Viewer** on APP Store for iOS devices, then you can view your camera anywhere, anytime on your smart mobile devices.

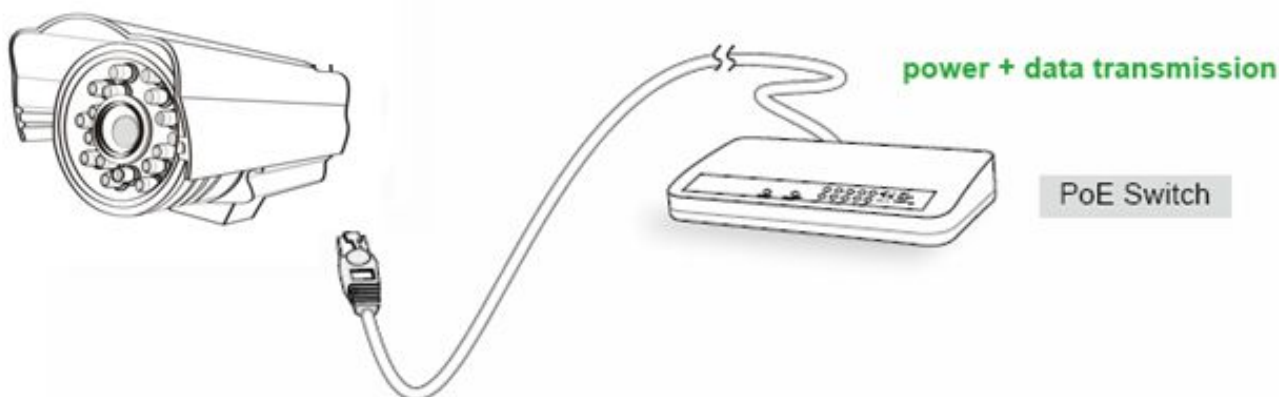
1.1 Key Features

- ◆ Standard H.264 video compression algorithm to satisfy the transmission of high definition video in narrow bandwidth network
- ◆ 1.0 Mega-Pixel(FC5412P, FC5413P) / 1.3 Mega-Pixel (FC5511E)
- ◆ Supports IE/Firefox/Google/Safari browser or any other standard browsers
- ◆ Supports WEP, PA and WPA2 Encryption
- ◆ PoE compliant with PoE standards IEEE 802.3af
- ◆ IR night vision , Range: 30m
- ◆ Supports image snapshot
- ◆ Supports dual-stream
- ◆ Supports IR-Cut and the filter change automatically
- ◆ Embedded IPCAM DDNS(dynamic domain name service) Service
- ◆ Supports remote viewing & record from anywhere anytime
- ◆ Multi-level users management with password protection
- ◆ Motion detection alert via email or upload image to FTP
- ◆ Supporting Third Party Domain name
- ◆ Providing Phone APPs for Android and iPhone users

- ◆ Supports multiple network protocols: HTTP /HTTPS/ RTSP/ TCP /IP /UDP /FTP /DHCP /DDNS / UPNP/ONVIF
- ◆ Providing Central Management Software to manage or monitor multi-cameras

1.2 PoE (Power over Ethernet-FC5511E)

The Network Camera is PoE-compliant, allowing transmission of power and data via a single Ethernet cable. Such as the following picture: connect the Network Camera to a PoE-enabled router/ switch via Ethernet cable.



1.3 Read Before Use

Please first verify that all contents received are complete according to the Package Contents listed below. Before the Network Camera is installed, please carefully read and follow the instructions in the Quick Installation Guide to avoid damage due to faulty assembly and installation. This also ensures the product is used properly as intended.

1.4 Packing Contents

• IPCAM×1	• CD×1
• DC Power Supply×1	• Quick Installation Guide ×1
• Mounting bracket×1	• Network Cable×1

1.5 Physical Description

1.5.1 Front Panel

Front Panel for FC5511E



Figure 1.1

1 Infrared LED: 36 IR LEDs

2 LENS: CMOS sensor with fixed focus lens

3 Induction IC

Front Panel for FC5412P/FC5413P



Figure 1.2

1 Induction IC

2 LENS: CMOS sensor with fixed focus lens

3 Infrared Lamp Array

1.5.2 Interface

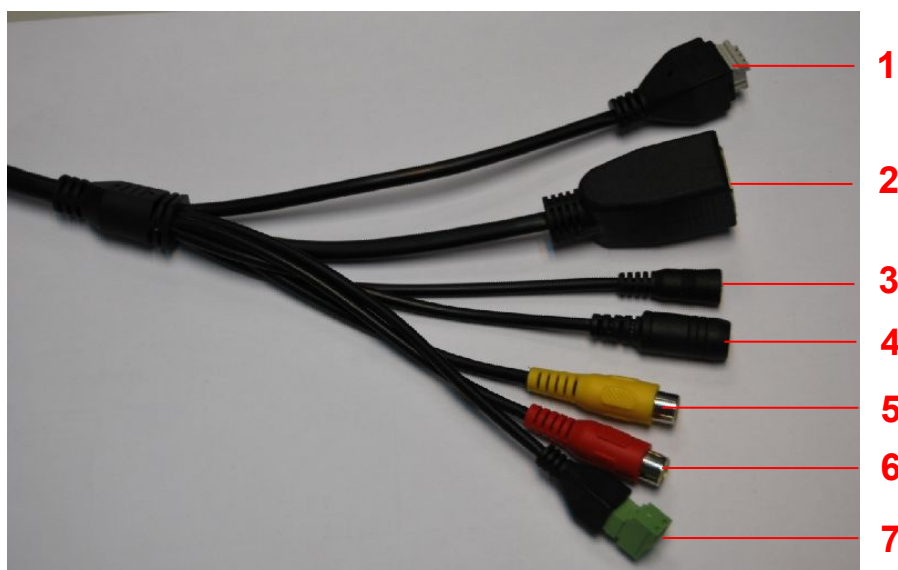


Figure 1.2

1 I/O alarm terminal block(only FC5511E)

This network camera provides a I/O alarm terminal block which is used to connect to external input / output device.

The pin(there are four number in the terminal block from no. 1 to no. 4) definitions are as follows:

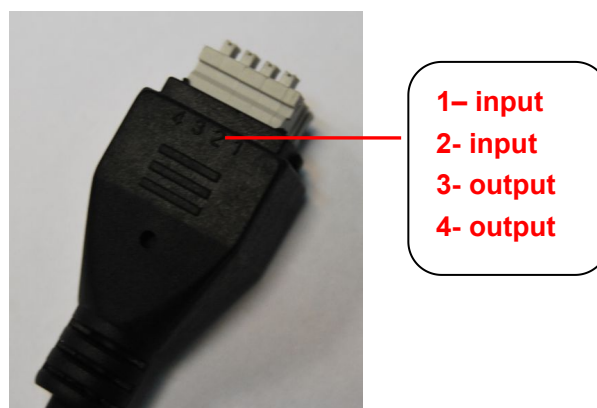


Figure 1.3

This camera supports I/O alarm, you can go to **Settings-Alarm - I/O** page to configure it.

2 LAN

10/100M adaptive Ethernet interface. Through this interface, IPCAM can be connected with various network devices, such as hub, router, etc.

3 Reset button

Press and hold on the reset button for 5 seconds. Releasing the reset button, the password will back to the factory default administrator password. The default administrator user is admin with no password.

4 Power Interface

Connect the external power adapter, request for 12V/2A power.

5 Audio input interface(only FC5511E)

The jack is used to plug external input device such as sound pick up device directly. Here microphone cannot directly insert to the interface, it must connect to commutator first.

6 Audio output interface(only FC5511E)

The jack is used to plug external output device such as loud speaker directly. Here microphone cannot directly insert to the interface, it must connect to commutator first.

7 RS485 Cradle head interface(only FC5511E)

This camera supports the standard 485 cradle head protocol (Pelco-D and Pelco-P). Please configure the RS485 protocol corresponding information first (go to **Settings- PTZ - RS485 Configuration** page and do settings), or else the cradle head may cannot work.

1.5.3 Bottom View

There are up to three labels located at the bottom of the camera; this is an important feature of original cameras. If your camera does not have labels as shown in Figure 1.4, it may be a clone. Cloned cameras can not use original firmware and are not eligible for warranty or technical services.

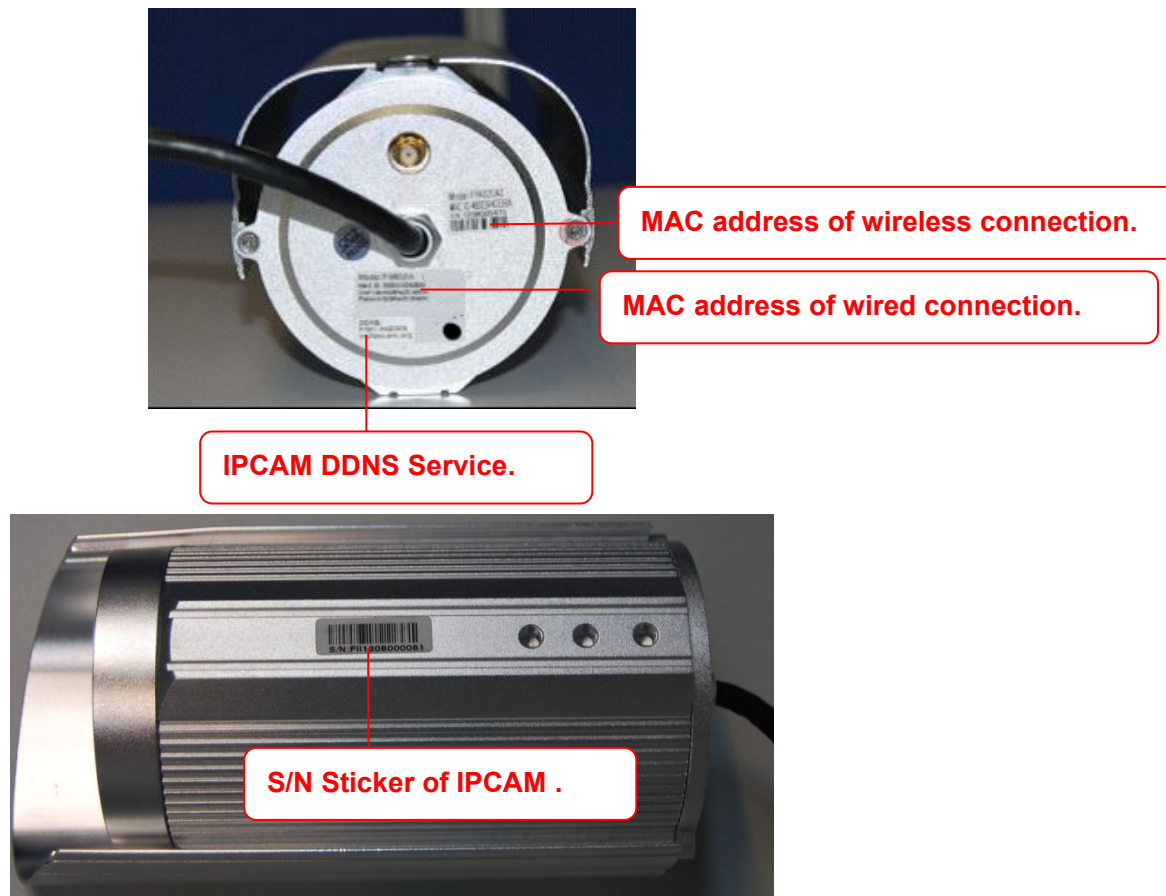


Figure 1.4

2 Accessing the Network Camera

This chapter explains how to access the network camera through web browsers and RTSP players.

2.1 Access the Camera in LAN

This camera support HTTP and HTTPS protocols, so here will allow you to use HTTP and HTTPS port No.

(1) Http:// LAN IP + Http Port No.

Double click the IP Camera Tool icon and it should find the camera's IP address automatically after you plug in the network cable.

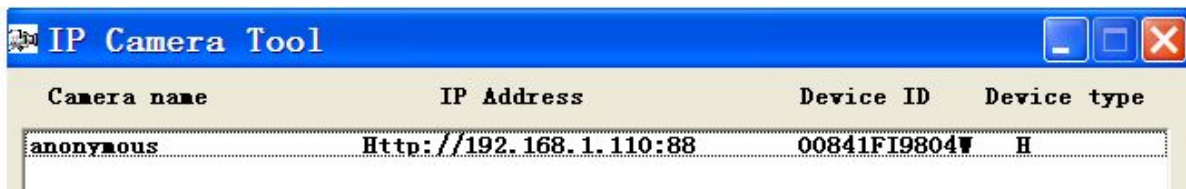


Figure 2.1

Double click the IP address of the camera; your default browser will open to the camera login page.

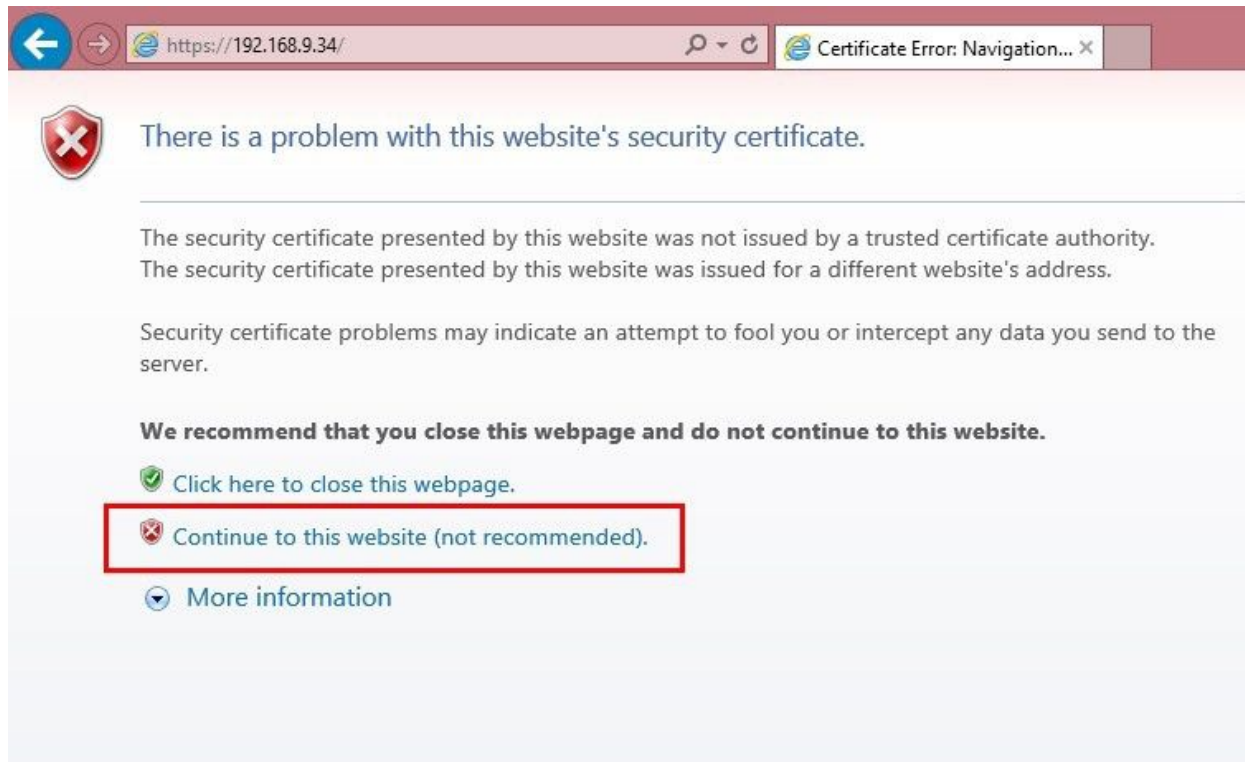
(2) Https:// LAN IP + Https Port no.

The default Https port no. is 443. You can use the url to access the camera: **https:// LAN IP + HTTPS port**. Go to **Settings - Network - Port** panel , you can see and change the https port no.



Figure 2.2

HTTPS(Hypertext Transfer Protocol over Secure Socket Layer) is a safe way to access your camera, the data transferred on the Internet will be encrypted. Since we can not apply license for every LAN or DDNS URL, the webpage may pop up a warning like the following picture, you just need to click 'Continue to this website (not recommended). '



Open **Internet Explorer** if it is not already opened. Click on **Tools**, then click Internet Options. Next, click the **Security** tab, then click the Trusted sites button.

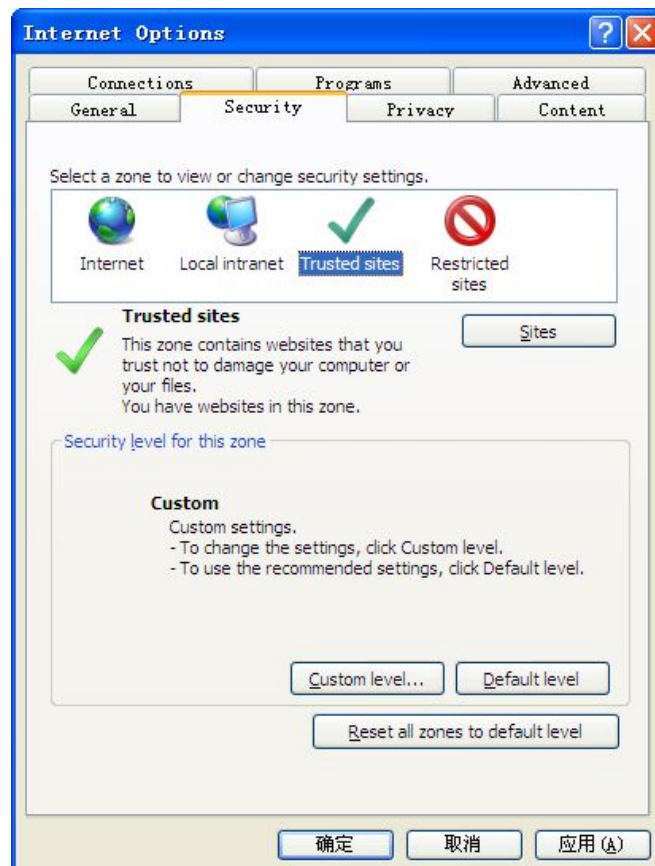


Figure 2.3

For **Firefox**, you can add the trusted as the following way:

Tools ---- Options ---- Advanced --- View Certificates --- Servers

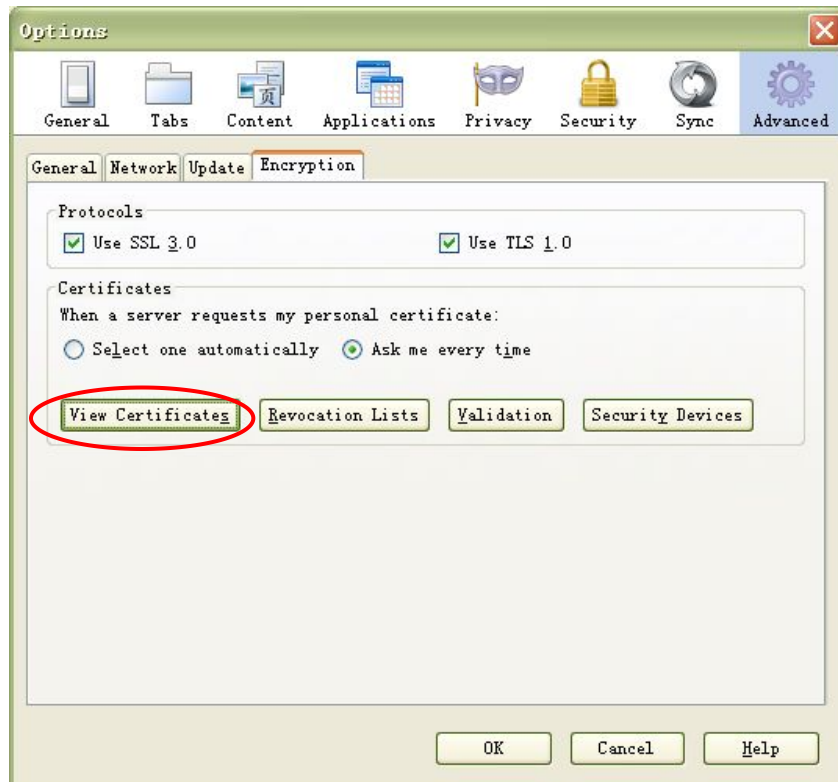


Figure 2.4

Click **View Certificates**, and go to **Servers** option.

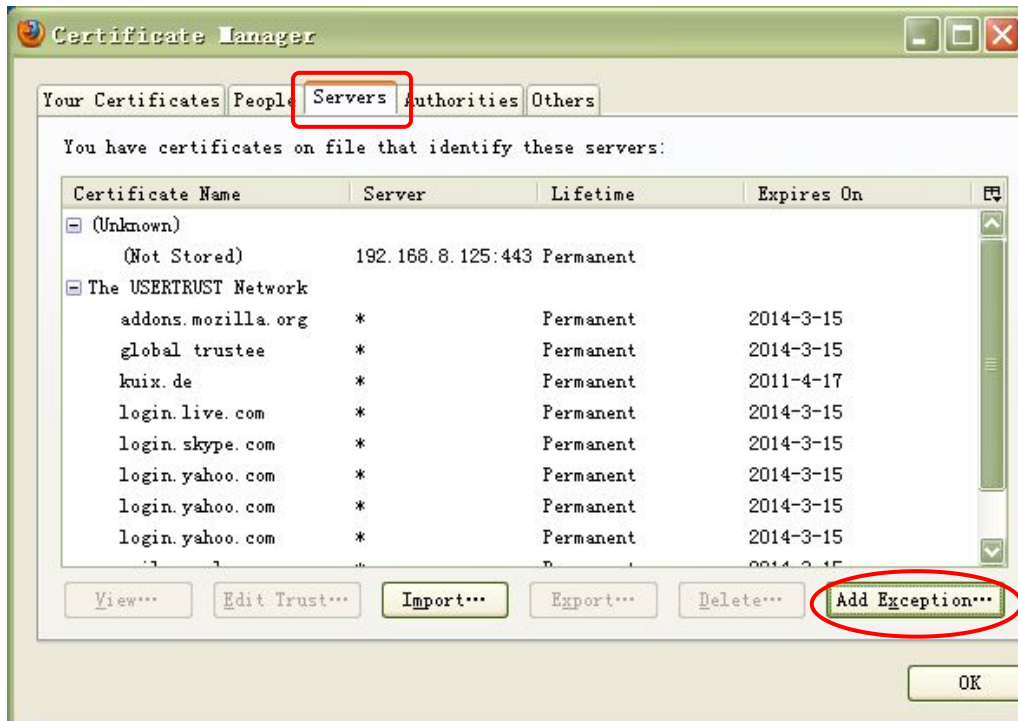


Figure 2.5

Go to **Add Exception** panel.

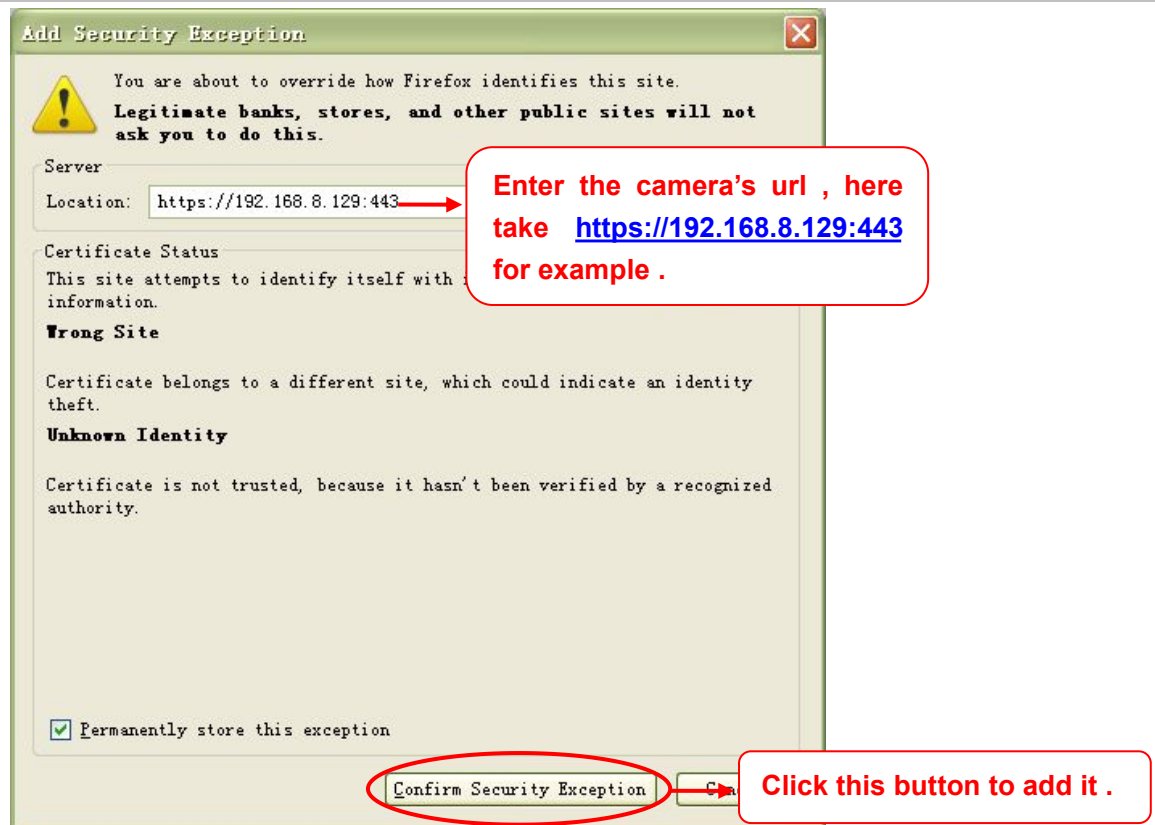


Figure 2.6

2.2 Access the Camera in WAN

2.2.1 Static IP Addresses

Users who have static IP addresses do not need to set DDNS service settings for remote access. When you have finished connecting the camera using the LAN IP address and port forwarding, you can access the camera directly from the Internet using the WAN IP address and port number.

How to Obtain the WAN IP address from a public website ?

To obtain your WAN IP address, enter the following URL in your browser: <http://www.whatismyip.com>. The webpage at this address will show you the current WAN IP.



Figure 2.7

Access your IP Camera from the Internet

You can access the IP Camera from the Internet (remote access). Enter the WAN IP address and port number in your standard browser. For example, you would enter `http:// 183.37.28.254:85`

NOTE :

Make sure port forwarding is successful. You can do port forwarding two ways.

1. Login to your router to enable the “UPnP” function. You can then login to the camera as administrator, choose Network, and then choose UPnP to enable UPnP. Make sure that the status of UPnP reads “UPnP Successful” on the Device Status page.

2. Do port (HTTP port) forwarding manually. (See Figure 2.11 for further details)

If your router has a Virtual Server, it can do port forwarding. Add the camera's LAN IP and port which you had set earlier to your router's port forwarding settings.

NOTE: If you plug the camera into a router, it will have a dynamic IP address and you need to set DDNS service settings to view it remotely.

Step 1: Enter the username and password of the Administrator (default username is admin with a blank password), and click “OK” to apply changes.

Step 2: Wait around 10 seconds, you'll see that the camera's LAN IP address has changed. In our example it was changed to 2000, so we see `http://192.168.8.102:2000` in IP Camera Tool. Also, the LAN IP address is now fixed at a static IP address of `http://192.168.8.102:2000`. This IP address will not change even if the camera is powered off and back on, the camera will remain on this LAN IP address. This is very important that a static LAN IP address is set, or you may have problems later with remote access and seeing the camera remotely if the camera loses power and reconnects on a different LAN IP address. Make sure you set a static LAN IP address!

2.2.2 Dynamic IP Addresses

DDNS is a service that allows your IP Camera, especially when assigned with a dynamic IP address, to have a fixed host and domain name. This means that even though your WAN IP address is constantly changing, you will have a fixed hostname you can use to access your cameras at all times. You can access the camera directly from the Internet using the hostname and port number.

What is the HTTP Port no.?

1) Default HTTP Port is 88

All cameras have the default HTTP port of 88. For example, if the LAN IP link of the camera is `http://192.168.8.102:88`, this means that the camera's HTTP port is 88. You can change port 88 to another port if you'd like such as 2000 or 8090, which will not be conflict with other existing ports like 25, 21, 10000. Here you can set the port no. between 1 and 65535.

2) Change the default http no.88 to another one.

How to assign a different HTTP Port No. and fixed the LAN IP of the camera by the IP Camera Tool?

Step 1: Open the IP Camera Tool, select the camera you would like to change the port of, right click on the IP address, and click on "Network Configuration", this brings up the network configuration box as shown in Figure 2.8 and 2.9.

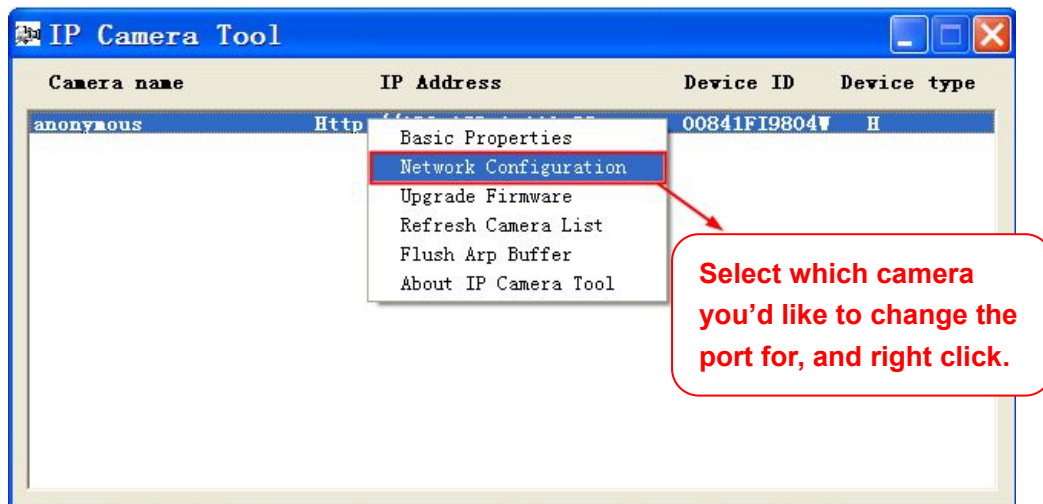


Figure 2.8

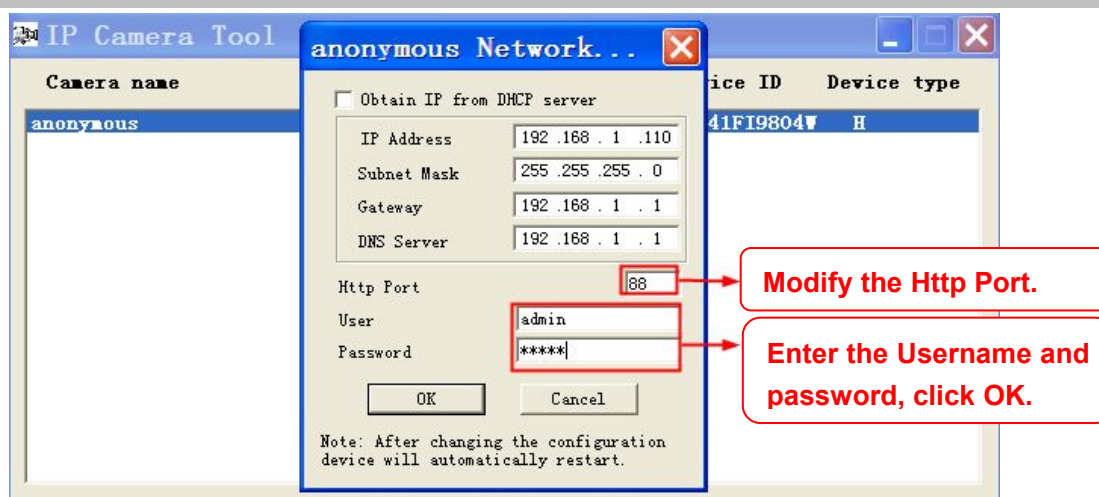


Figure 2.9



Figure 2.10

What is Port forwarding?

If you have never done port forwarding before, you can open and view the following link to understand the basic concept. Port forwarding allows for outside connections to access a specific device on your network from anywhere in the world. Every router automatically blocks any incoming connections for safety purposes. Using port forwarding, you are telling your router to allow a connection through a certain port (you can think of it as a gateway) into your router. You set this port to a specific device, in our case an IP Camera, so it can be accessed from anywhere in the world.

Click this link to learn more about port forwarding: <http://portforward.com/help/portforwarding.htm>

How do we configure Port Forwarding ?

For this section, we will be using an example:

Let's say the camera's LAN IP address is <http://192.168.8.100:2000>

Step 1: Login to the router, and go to your router's port forwarding or port triggering menu. Sometimes this is also under the name of Virtual Server or NAT.

Using the Linksys brand router as an example, we would log into the router, and go to the Applications & Gaming menu. We would then click on the "Single Port Forwarding" sub-menu.

Step 2: Create a new column using the LAN IP address & HTTP Port of the camera within the router as shown below, then push OK or Submit to save your settings:

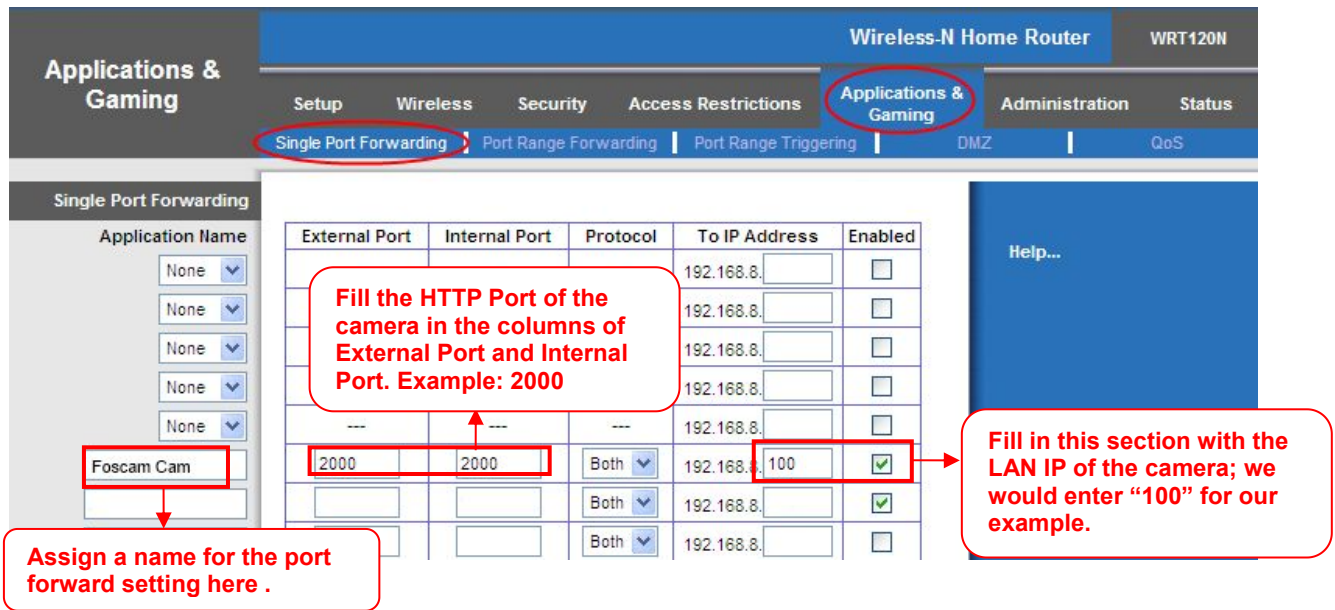


Figure 2.11

First method :

Use the embedded DDNS to access the camera via the Internet

Each camera has an embedded unique DDNS domain name, the format of this domain name is xxxxxx.myipcamera.org. On the bottom of the camera, you can see the domain name sticker with this information on it.

For example, we can use **cp4911.myipcamera.org**. In the camera, click Settings at the top, click "Network" on the left, then click "DDNS" to get to the DDNS settings page. Here you can see the unique domain name of your camera.

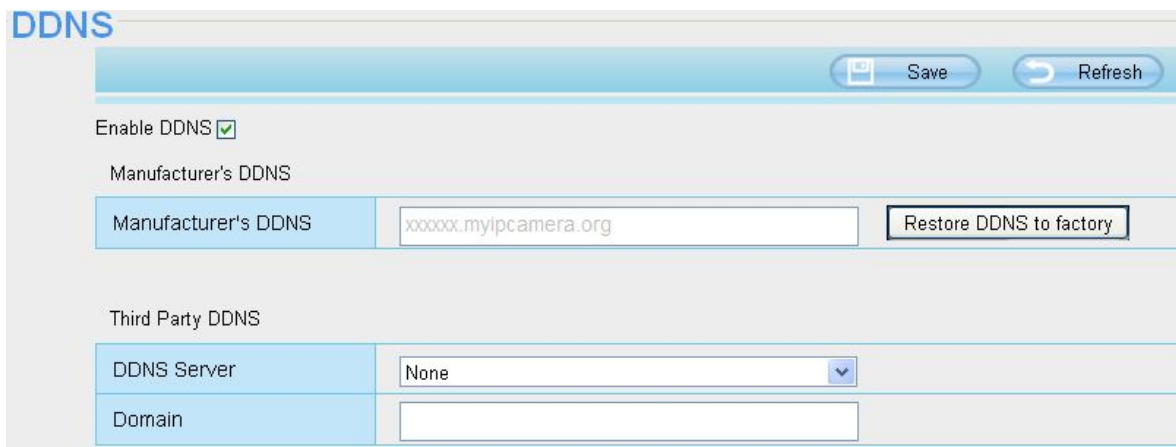


Figure 2.12

Now you can use "http://Domain name + HTTP Port" to access the camera via the Internet.

Take hostname cp4911.myipcamera.org and HTTP Port of 2000 for example, the URL link to access the camera via the Internet would be http:// test09.myipcamera.org:2000.

Second method :

Use the Third party DDNS to access the camera via the Internet

Step 1, Please go to the third party DDNS website(such as www.no-ip.com) to create a free hostname.
Step 2, DO DDNS Service Settings within the Camera

Please set DDNS Settings within the camera by **hostname**, a user name and password you've got from www.no-ip.com

Take hostname ycxgwp.no-ip.info, user name **test**, password **test2012** for example.

Firstly, goes to option of DDNS Settings on the administrator panel.

Secondly, select No-Ip as a server.

Thirdly, fill test as DDNS user, fill password **test2012** as DDNS password, fill ycxgwp.no-ip.info as DDNS domain and server URL, Then click save to make effect. The camera will restart and to take the DDNS settings effective.

Fourthly, after the restart, login the camera, and go to option of Device Status on the administrator panel, and check if the DDNS status is successful.

If failed, please double check if you have input the correct hostname, user name, and password, and try to redo the settings.

NOTE :

If you have set Third Party DDNS successfully ,the IPCAM Domain Name will be invalid. The Third Party DDNS and the IPCAM Domain Name cannot work at the same time, the last time you configured will take effect.

2.3 Using the VLC player

This camera supports RTSP streaming, here you can view the camera using VLC player.

RTSP URL [rtsp:// \[user_name\]:\[password\]@IP:HTTP_port number/videosream](rtsp://[user_name]:[password]@IP:HTTP_port_number/videosream)

The part in the square brackets may be omitted.

user name & password:

The user name and password to access the camera. This part can be omitted.

IP: WAN or LAN IP address.

Videostream:Here support three modes: videoMain, videoSub and audio. When the network speed is bad, here you had better select videoSub. If you select audio, you can only hear the sound but cannot see the video.

For example:

IP: 192.168.1.11

HTTP Port number: 88

User name: admin

Password: 123

Here I can enter one of the following URLs in the VLC.

1. rtsp://admin:123@192.168.1.11:88/videoMain
2. rtsp:// @192.168.1.11:88/videoMain
3. rtsp://:123@192.168.1.11:88/videoMain

4. rtsp://admin@192.168.1.11:88/videoMain

Open the VLC, and go to Media(Open Network Stream option, then enter the URL into VLC.

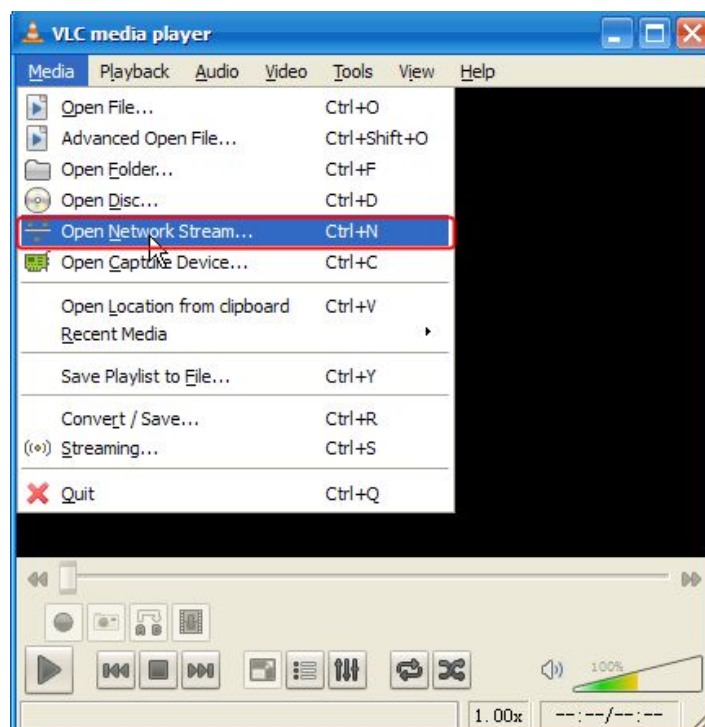


Figure 2.13

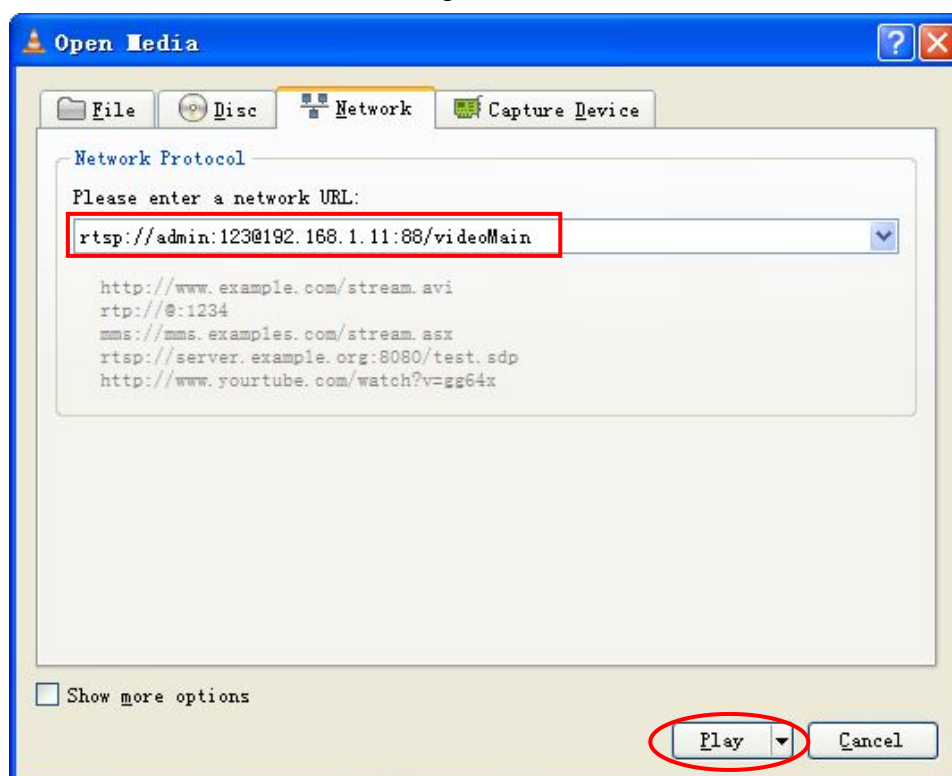


Figure 2.14

Sometimes you may need to enter the user name and password again. Click OK and you can see the real-time preview.



Figure 2.15

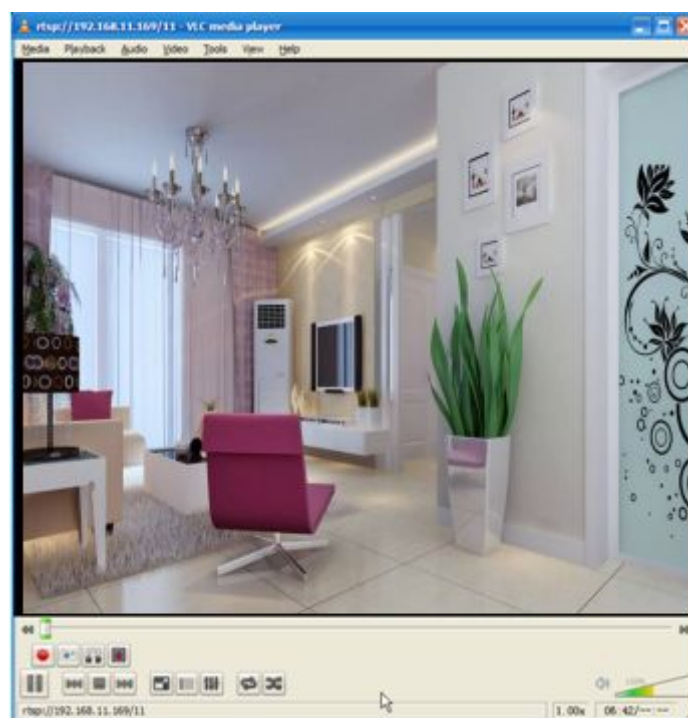


Figure 2.16

If you cannot play the video in the VLC player, please check the port mapping. You can read Quick Installation Guide about How to configure port forwarding.

NOTE:

If you modify the camera's username or password, you had better reboot the camera, or else the new username and password cannot take effect when you enter the authentication in the VLC.

2.4 IP camera connection to the server

Device supports ONVIF 2.2.1 protocol, You can easily access the NVR with ONVIF or server with ONVIF.

3 Surveillance Software GUI

Please refer to the Quick Installation Guide if you install the camera at first time. After finishing quick installation, you can take time to learn the operation of the software.

3.1 Login Window

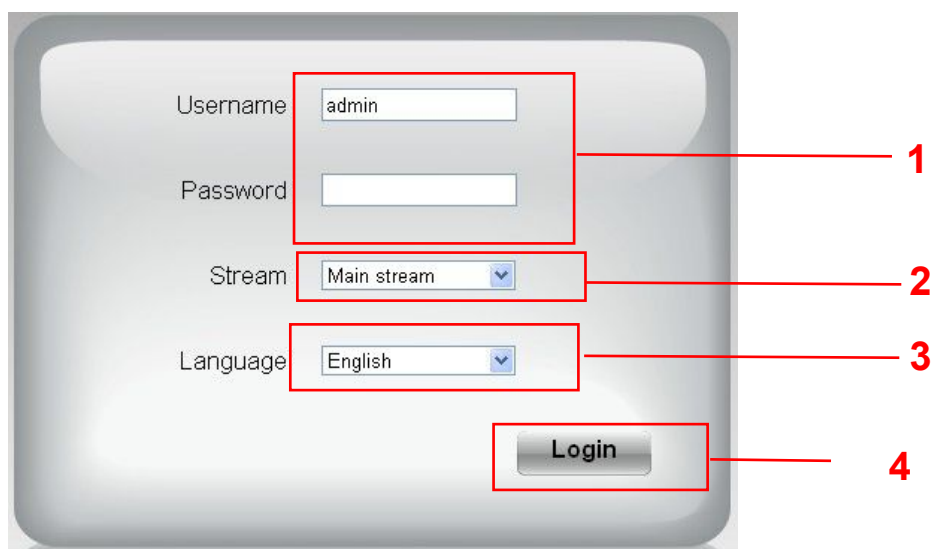


Figure 3.1

Please check the login window above, it was divided to 4 sections from no. 1 to 4.

Section1 Enter the Username and password

The default administrator username is admin with no password, please reset the password at first using and prevent unauthorized users login the camera (read chapter 3.2.4 about how to change).

Section2 Stream

The camera supports two stream modes: Main stream and sub stream. If you want to access the camera form LAN, here you can select Main stream. If you want to access the camera from Internet, here we recommend sub stream.

NOTE: When the network bandwidth is badly you'd better select Sub Stream and the video will be more fluency.

Section3 Select the language

You can select the language you need via click on the language dropdown list to switch.

Section4 Login the camera

Click Login button and you will see the surveillance windows.(If login the camera for the first time, the page that modify the username and password will appears.)

3.2 Modify the Username and Password

When you log in for the first time, it will come to the operating of modify the username and password automatically.

Figure 3.2

Enter the New Username, New password and Confirm the password.
Click **Modify** button, you will see the login page again.

3.3 Surveillance Window

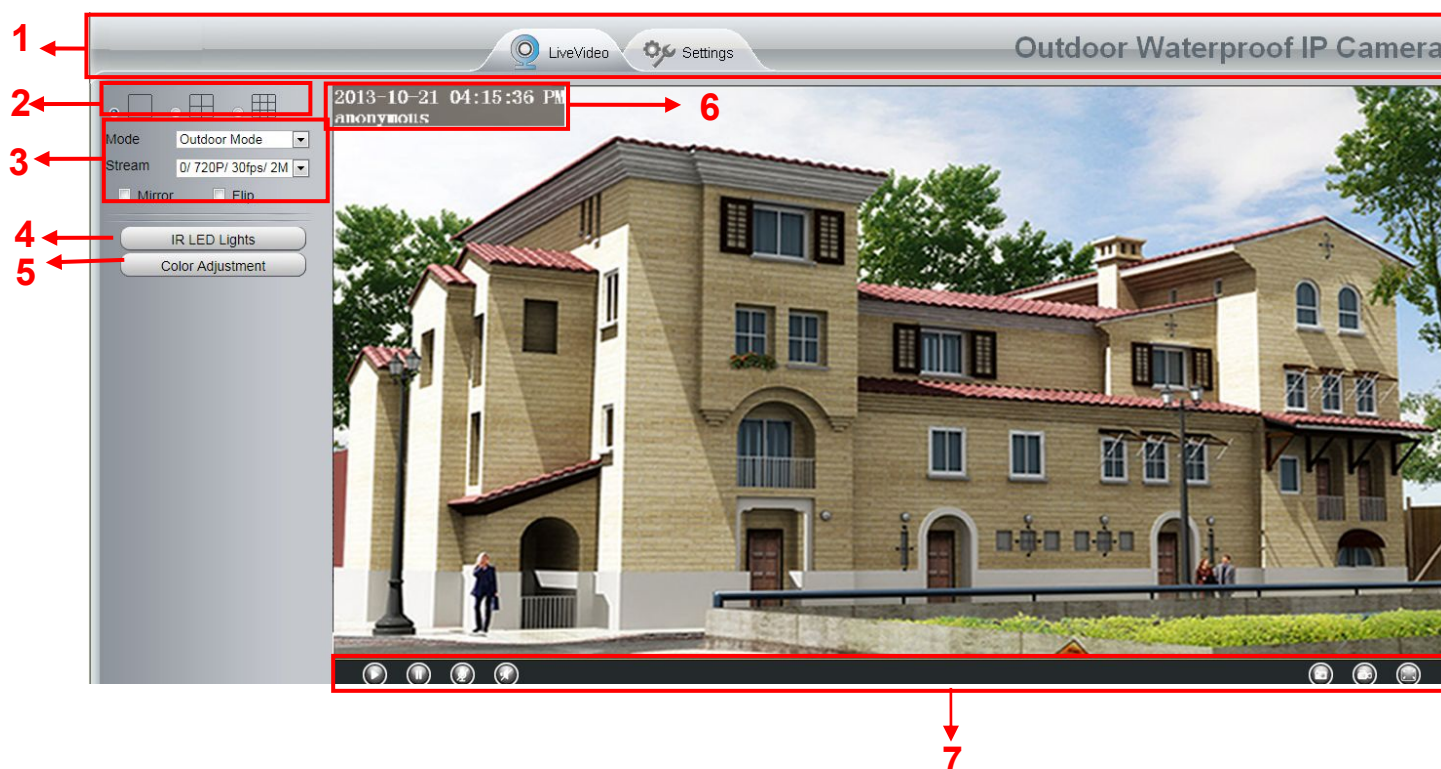


Figure 3.3

Section1 LiveVideo / Settings buttons



: Path to surveillance window. Click this button and back to the surveillance window



: Path to Administrator Control Panel, Click it, and it will lead to Administrator Control Panel and do advanced settings.

Section2 Multi-Device Window



The firmware inside the camera supports up to maximum of 9 cameras being monitoring at the same time. You can add other cameras in multi-camera panel (read chapter 4.2.5).

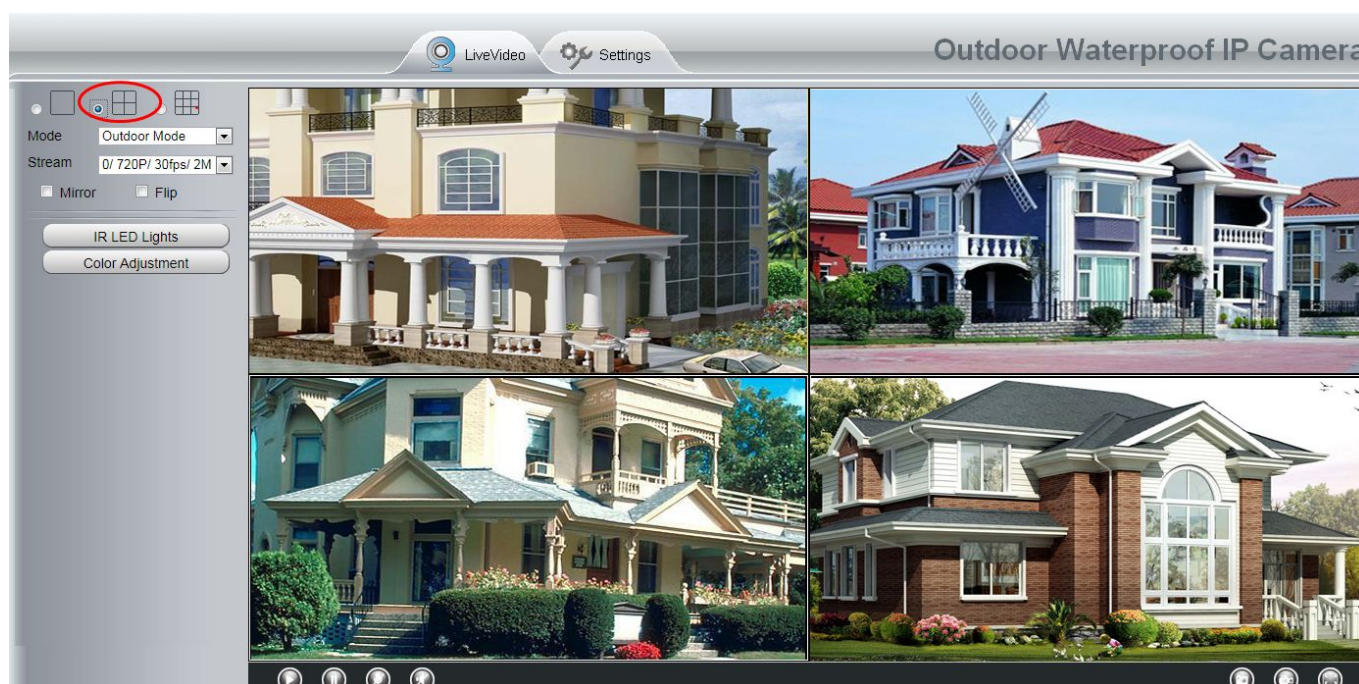


Figure 3.4

Section3 Mode/ Stream / Mirror/ Flip buttons

Mode

- 1) 50Hz -----Indoor surveillance (Region: Europe, China)
- 2) 60Hz -----Indoor surveillance (Region: USA, Canada)
- 3) Outdoor Mode-----Outdoor surveillance

Stream

The default Stream supports four modes:

0/720P/30fps/2M, 1/VGA/25fps/4M, 2/VGA/15fps/1M and 3/VGA/10fps/200K

The format of the stream type is **Stream type no. / Resolution / Maximum frame rate/ Bit rate**

1) **Stream type no.** : The number is used to identify the stream type.

2) 720P/ VGA

There are two resolutions, the bigger one is 720P, and the smaller one (VGA) is 640x480 pixels. The bigger the

resolution, the better of the image quality is. If you are accessing the camera via internet and want to get more fluent video streaming, please select resolution VGA.

3) Maximum frame rate

When the video format is 50Hz, the maximum frame rate is 25 fps. When the video format is 60Hz, the maximum frame rate is 30 fps. You should lower frame rate when the bandwidth is limited. Normally, when the frame rate above 15, you can achieve fluently video.

4) Bit rate

Generally speaking, the larger the bit rate is, the clearer video will become. But the bit rate configuration should combine well with the network bandwidth. When the bandwidth is very narrow, and bit rate is large, that will lead to video cannot play well.

You can reset the stream type on Settings-> Video-> Settings panel(chapter 4.4.1).
After changing, please re-login the camera and you can see the modification.

Section4 IR LED Lights



Click IR LED Lights and there are two modes to adjust the infrared led: Auto and Off . The default mode is Auto.

Auto: Select it and the camera will adjust the infra led (on or off) automatically.

Manual: Select it and turn off the infra led manually.

Section5 Image quality settings

In this page, you can tune Hue, Brightness, Contrast, Saturation, and Sharpness to get higher quality.



Section6 OSD

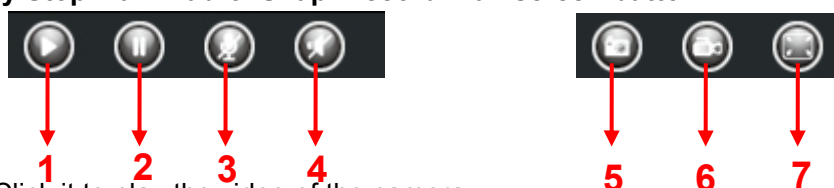
If you have added time and camera name in the video, you can see it in the live window.

Go to **Settings ---Basic settings---Camera name** panel, and you can change another device name. The default device name is anonymous.

Go to **Settings ---Basic settings---Camera time** panel and adjust the device time.


Go to **Settings ---Video---On Screen Display** panel, you can add or no add OSD.


Section7 Play/Stop/ Talk/Audio/ Snap/ Record/ Full screen button




1-----Play Click it to play the video of the camera

2-----Stop Click it to stop the video of the camera

3----- Talk: Click the button and the icon will become to , then talk to the microphone that connected with PC, people around the camera can hear your voice if the camera has connected with audio output device. Click the icon again and stop talking.

4----- Audio Click the button and the icon will become to , you can hear the sound around the camera if the camera has connected with other audio input device through the Audio Input port of the camera, Click the icon again and stop audio.

5----- Snap: Click it to make snapshot and it pop up a window which picture you snapshot, right click in the window and save the picture to anywhere you want.

6----- Record: Click the icon  and the camera start recording, you can see a green dot in the live window. Click again and stop recording. The default storage path is C:\IPCamRecord. You can change the storage path: Go to Settings- >Record-> Storage Location panel.

7-----Full Screen Click it to make full-screen, or you can double click the surveillance screen to make full-screen. Double click again and exit full-screen.

Onscreen Mouse Control

Right click the mouse and you can adjust the full screen and Zoom up.

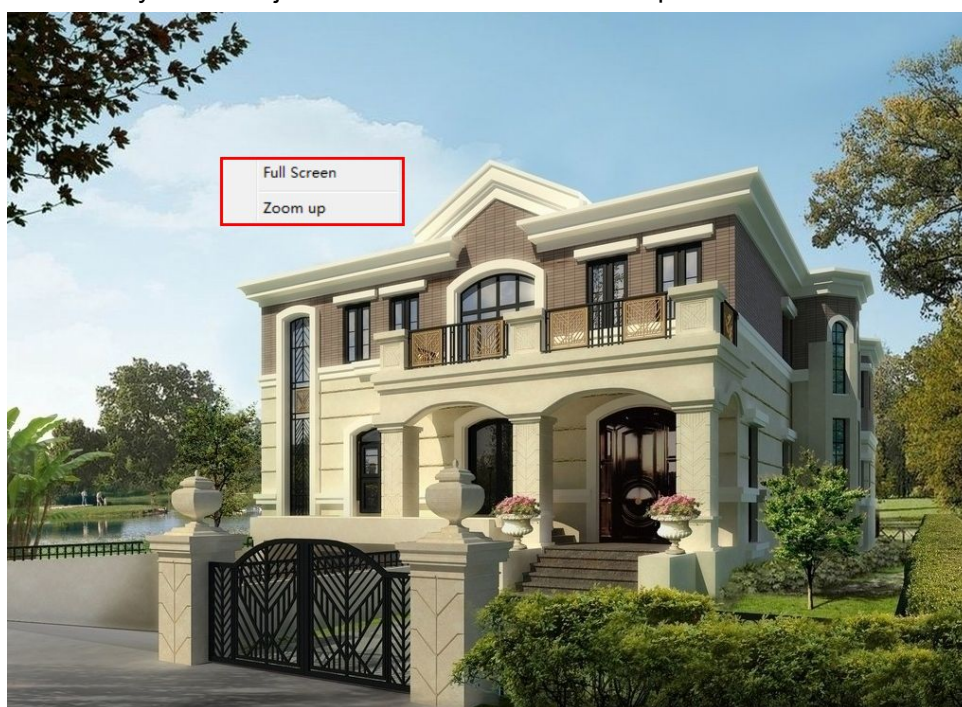


Figure 3.5

Full Screen: Select it and Click it to make full-screen, press ESC and exit full-screen.

Zoom up/down: Click it and the live view will be digital zoomed up, then click Zoom Down and the live view back to original size.



Figure 3.7

NOTE:

For Mac OS, the plugin cannot support Onscreen Mouse function, so you cannot allow to use it.

4 Advanced Camera Settings

Click the button “Settings”, goes to Administrator Control Panel to make advanced camera settings.

4.1 Device Status

Device Status contains four columns: Device Information, Device Status, Session Status and Log, it will show you various information about your camera.

4.1.1 Device Information

Device Information	
Refresh	
Camera Model	FC5511E
Camera Name	FC5511E
Camera ID	001111112222
Camera Time	1970/01/01 16:27:49
System Firmware Version	1.4.1.8
Application Firmware Version	1.14.1.18
Plug-In Version	2.0.1.7

Figure 4.1

Camera Model: The model of the device.

Camera Name: The Device Name is a unique name that you can give to your device to help you identify it. Click Basic Settings and go to Device Name panel where you can change your camera name. The default device name is anonymous.

Camera ID: Display the MAC address of your camera. For example Device ID is 008414350787, the same MAC ID sticker is found at the bottom of the camera.

Camera Time: The system time of the device. Click Basic Settings and go to Camera Time panel and adjust the time.

System Firmware version: Display the System Firmware version of your camera.

App Firmware version: Display the application firmware version of your camera.

Plug-in version: Display the plug-in version of your camera

4.1.2 Device Status

On this page you can see device status such as Alarm status, NTP/DDNS status, WIFI status and so on.

Device Status	
<div>Refresh</div>	
Alarm Status	Disabled
NTP Status	Failed
DDNS Status	Disabled
UPnP Status	Disabled
WiFi Status	Not connected
IR LED Status	Off

Figure 4.2

4.1.3 Session status

Session status will display who and which IP is visiting the camera now.

Session status	
<div>Refresh</div>	
User name	IP address
admin	192.168.1.102
admin	218.17.160.187

Figure 4.3

4.1.4 Log

The log record shows who and which IP address accessed or logout the camera and when.

Log

Pages:83 <<1 2 3>> Go Refresh

NO.	Time	User	IP	Log
1	2			
2	2			
3	2012-09-18 01:29:51	admin	192.168.1.102	Log out
4	2012-09-18 01:27:54	admin		
5	2012-09-18 01:26:21	admin		
6	2012-09-18 01:25:42	admin	218.17.160.187	Login
7	2012-09-18 01:25:15	admin	192.168.1.102	Login
8	2012-09-18 01:25:13	admin	192.168.1.102	Log out
9	2012-09-18 01:24:46	admin	192.168.1.100	Login
10	2012-09-18 01:21:44	admin	192.168.1.102	Login

Click the page number and go to the corresponding page to see more logs .

Fill in one page number, click Go button and go to the corresponding page .

Figure 4.4

4.2 Basic Settings

This section allows you to configure your Camera Name, Camera Time, Mail, User Accounts and Multi-Device.

4.2.1 Camera Name

Default alias is anonymous. You can define a name for your camera here such as apple. Click **Save** to save your changes. The alias name cannot contain special characters.

Camera Name

Save Refresh

Camera Name

The maximum Device Name length is 20, support English, numbers, letters and symbols

Figure 4.5

4.2.2 Camera Time

This section allows you to configure the settings of the internal system clocks for your camera.

Camera Time

Save Refresh

Time Zone (GMT) Greenwich mean time; London, Lisbon, Ca

Sync with NTP server ☐

NTP Server time.nist.gov

PC Time 2013-10-22 07:32:46 AM Sync with PC

Date Format YYYY-MM-DD

Time Format 12-hour

use DST ☒

Ahead Of Time 0 Minute

Figure 4.6

Time Zone: Select the time zone for your region from the dropdown menu.

Sync with NTP server: Network Time Protocol will synchronize your camera with an Internet time server. Choose the one that is closest to your camera.

Sync with PC: Select this option to synchronize the date and time of the Network Camera with your computer.

Manually: The administrator can enter the date and time manually. Please select the date and time format.

use DST: Select the **use DST**, then select the daylight saving time from the dropdown menu.

Click Save button to submit your settings.

4.2.3 User Accounts

Here you can create users and set privilege, **visitor**, **operator** or **administrator**. The default administrator user accounts are admin with a blank password.

User Accounts

Refresh

NO.	Username	Privilege
1	admin	Administrator
2		
3		
4		
5		
6		
7		
8		

Username

Privilege

☐ Change username

☐ Change password

The maximum length of the user name is 20, support numbers, letters and symbols _ - @\$*

The maximum password length is 12, does not support the character & =

Figure 4.7

How to change the password?

Firstly, select the account which you want to change the password, then select “Change password”, enter the old password and the new password, lastly click modify to take effect.

User Accounts

Refresh

NO.	Username	Privilege
1	admin	Administrator
2		
3		
4		
5		
6		
7		
8		

Username

Password

New password

Privilege

☐ Change username

☒ Change password

The maximum length of the user name is 20, support numbers, letters and symbols _ - @\$*

The maximum password length is 12, does not support the character & =

Figure 4.8

How to add account ?

Select one blank column, then enter the new user name, password and privilege, last click Add to take effect. You can see the new added account on the Account list.

User Accounts Refresh

NO.	Username	Privilege
1	admin	Administrator
2		
3		
4		
5		
6		
7		
8		

Username:

Password:

Privilege:

☐ Change username

☐ Change password

The maximum length of the user name is 20, support numbers, letters and symbols _ - @\$*

The maximum password length is 12, does not support the character & =

Figure 4.9

User Accounts Refresh

NO.	Username	Privilege
1	admin	Administrator
2	operator	Operator
3		
4		
5		
6		
7		
8		

Username:

Privilege:

☐ Change username

☐ Change password

The maximum length of the user name is 20, support numbers, letters and symbols _ - @\$*

The maximum password length is 12, does not support the character & =

Figure 4.10

Delete : Select the account which you want to delete, then click Delete button to take effect.

NOTE: The default administrator account cannot be deleted, but you can add other administrator users.

How to change the username ?

Firstly, select the account which you want to change the username, then select “Change username”, enter the new password, lastly click modify to take effect.

User Accounts Refresh

NO.	Username	Privilege
1	admin	Administrator
2	operator	Operator
3		
4		
5		
6		
7		
8		

Username:

New username:

Privilege:

☒ Change username
☐ Change password

The maximum length of the user name is 20, support numbers, letters and symbols _ - @ \$ *

The maximum password length is 12, does not support the character & =

Figure 4.11

4.2.4 Multi-Camera

If you want to view multi-surveillance screens on one window, you need to login one camera, and set it as the main device, and do Multi-Device Settings, add other cameras to the first one camera. Before you do multi-cams settings, you need to assign different port such as 81, 82, 83, 84, 85, 86, 87, 88 to the cameras if there is 8 cams installed.

The firmware within the camera can support a maximum of 9 devices monitoring all at the same time. This page you can both add IPCAM MJPEG and H.264 series cameras to the first camera and view multi-surveillance screen on one window.

Add cameras in LAN

In Multi-Device Settings page, you can see all devices searched in LAN. The 1st Device is the default one. You can add more cameras in the list in LAN for monitoring. The camera's software supports up to 9 IP Cameras online simultaneously. Click The **2nd Device** and click the item in the Device List in LAN, the Alias, Host and Http Port will be filled in the boxes below automatically. Enter the correct username and password then click **Add**. Add more cameras in the same way.

1 Click it, camera model, alias, host and HTTP Port will be filled in the following boxes automatically .

2 Enter the User name and password of the 2nd camera .

3 Click Add to take effect .

Cameras On LAN	
	anonymous(192.168.11.193) F19821W for ebuver (192.168.11.241) anonymous(192.168.11.203) anonymous(192.168.11.243)
The 1st Camera	This Camera
The 2nd Camera	None
Camera Model	MJ
Camera Name	anonymous
Host	192.168.11.203
HTTP Port	80
Media Port	80
Username	admin
Password	
	Add Delete
The 3rd Camera	None
The 4th Camera	None

Figure 4.12

Camera Model: Our Company produces two series cameras: MJPEG and H.264. Here will show you which series the camera belongs to.

Cameras On LAN		<div>anonymous(192.168.11.193)</div> <div>FI9821W for ebuyer (192.168.11.241)</div> <div>anonymous(192.168.11.203)</div> <div>anonymous(192.168.11.243)</div>	<div>Refresh</div>
The 1st Camera	This Camera		
The 2nd Camera	anonymous(192.168.11.203)		
The 3rd Camera	FI9821W for ebuyer (192.168.11.241)		
The 4th Camera	anonymous(192.168.11.203)		
The 5th Camera	None		
The 6th Camera	None		
The 7th Camera	None		
The 8th Camera	None		
The 9th Camera	None		

Note: If you want to access your camera remotely, make sure you are able to access it seperately through a browser.

Figure 4.13

Back to Surveillance Windows, and click Four Windows option, you will see four cameras you added.

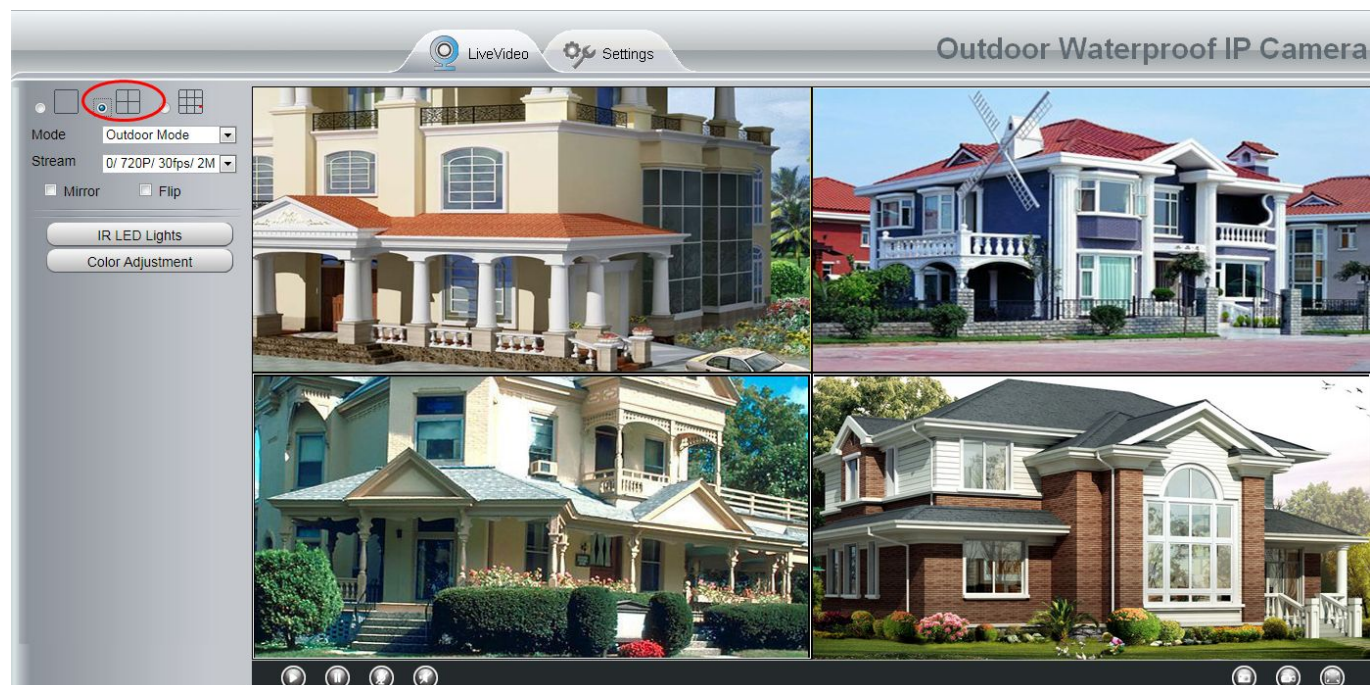


Figure 4.14

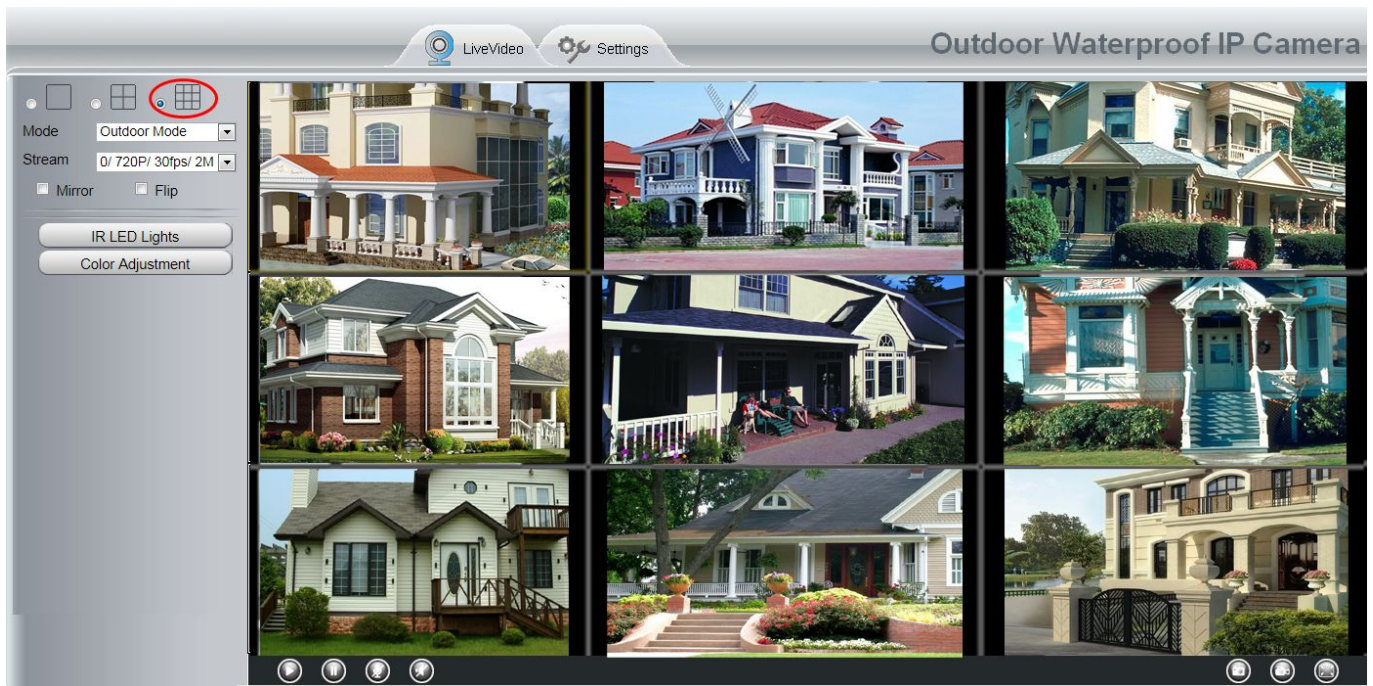


Figure 4.15

Add cameras in WAN

If you want to view all cameras via the internet(remote computer), you will need to add them using DDNS domain name. Firstly, make sure all of the cameras you added can be accessed through the internet. (Read How to configure DDNS settings in chapter 4.3.3)

Login to the first camera using a DDNS domain name and port.

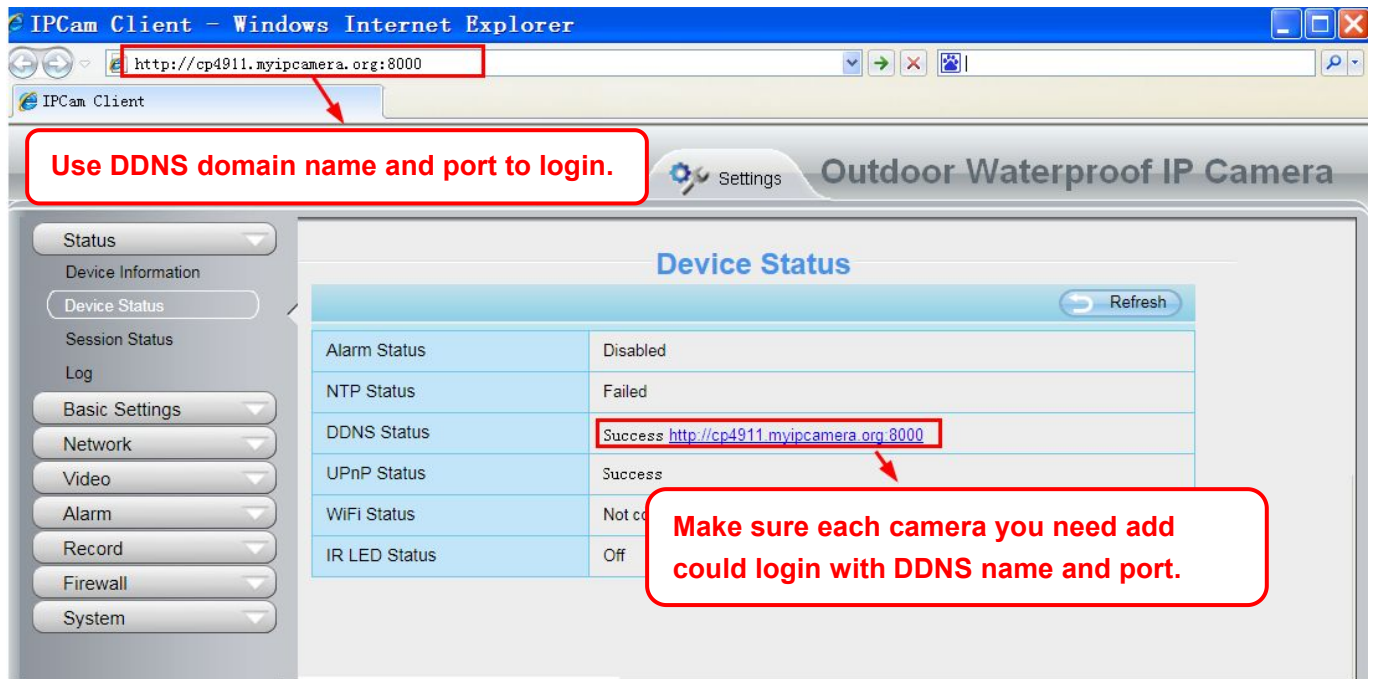


Figure 4.16

Click Multi-Device Settings. Choose The 2nd Device. Fill in the 2nd camera's name, DDNS domain name, port number. Enter user name and password and then choose Add.

The screenshot shows a web interface for managing cameras. At the top right is a 'Refresh' button. Below it is a table with two columns: 'Cameras On LAN' and a list of camera details. The first row shows 'The 1st Camera' with details 'This Camera'. The second row shows 'The 2nd Camera' with details 'anonymous(192.168.11.203)'. Below the table is a form for adding a new camera. The form fields are: Camera Model (MJ), Camera Name (apple), Host (camera.no-ip.info), HTTP Port (801), Media Port (801), Username (admin), and Password (empty). Below the form are 'Add' and 'Delete' buttons. Red boxes and arrows highlight the following: 1. Camera Model dropdown, 2. Camera Name text box, 3. Host text box, 4. Username and Password text boxes, and 5. Add button.

Cameras On LAN	
	FI9821W for ebuyer (192.168.11.241) anonymous(192.168.11.243) anonymous(192.168.11.203)
The 1st Camera	This Camera
The 2nd Camera	anonymous(192.168.11.203)
Camera Model	MJ
Camera Name	apple
Host	camera.no-ip.info
HTTP Port	801
Media Port	801
Username	admin
Password	
	Add Delete
The 3rd Camera	None
The 4th Camera	None

Figure 4.17

- 1----- The camera model: MJ or H264.
- 2----- The 2nd camera's name
- 3----- Fill in the 2nd camera's DDNS host not LAN IP
- 4 ---- Enter the 2nd camera's user name and password
- 5----- Click Add button and to take effect

NOTE: Here the Host must be entered as the second camera's DDNS domain name, not its LAN IP.

<div>Refresh</div>	
Device List in LAN	<div> apple(192.168.13.102) mycamera(192.168.13.108) ipcam(192.168.13.107) FI9821W-01(192.168.13.106) </div> <div>Refresh</div>
The 1st Device	This Device
The 2nd Device	apple(camera.no-ip.info)
The 3rd Device	ipcam(test01.foscam.org)
The 4th Device	mycamera(owlejwww.no-ip.info)
The 5th Device	None
The 6th Device	None
The 7th Device	None
The 8th Device	None
The 9th Device	None
<p>Attention: If you want to access the device from internet, be sure the host and port that you set can be accessed from internet.</p>	

Figure 4.18

Return to video window. You will see all of the cameras accessible through the internet. When you are away from home, you can use the first camera's DDNS domain name and port to view all the cameras via internet.

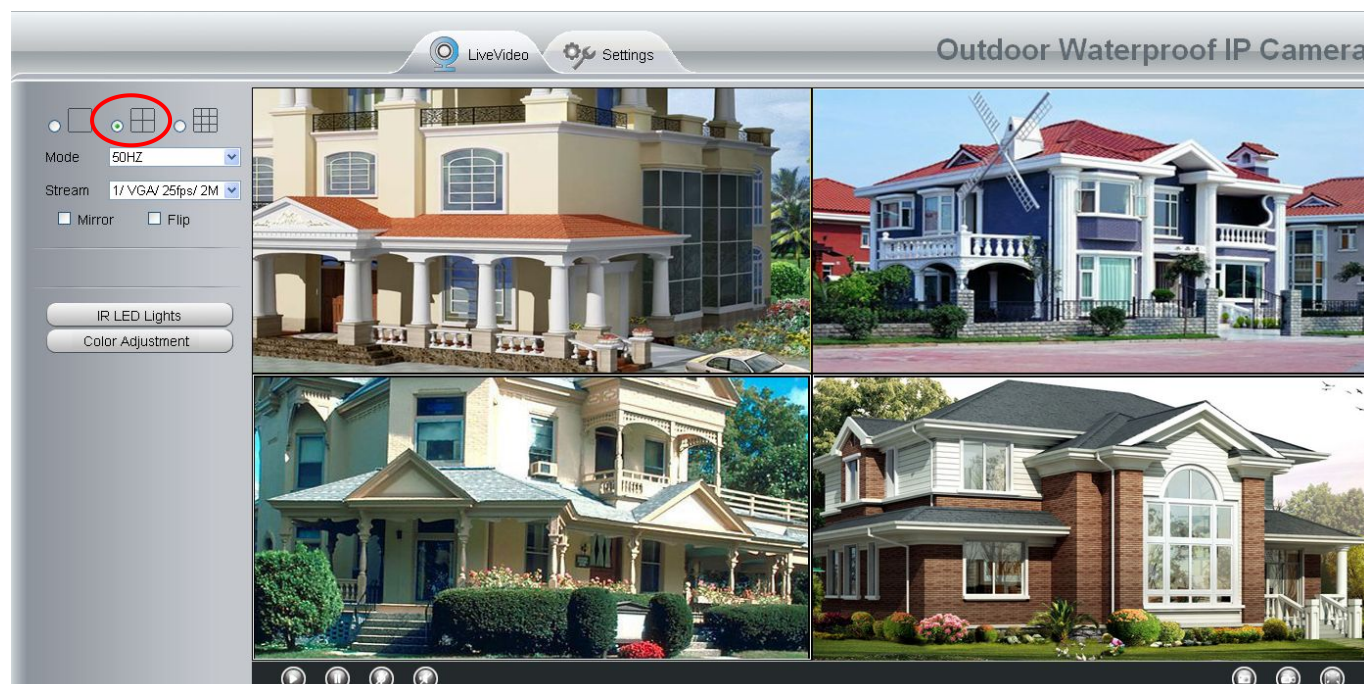


Figure 4.19

4.3 Network

This section will allow you to configure your camera's IP, PPOE, DDNS, Wireless Settings, UPnP, Port, Mail Settings and FTP Settings.

4.3.1 IP Configuration

If you want to set a static IP for the camera, please go to **IP Configuration** page. Keep the camera in the same subnet of your router or computer.



Save Refresh	
Obtain IP From DHCP <input type="checkbox"/>	
IP Address	192.168.0.109
Subnet Mask	255.255.255.0
Gateway	192.168.0.1
Primary DNS Server	192.168.0.1
Secondary DNS Server	202.96.134.133

Note: Once you save your settings, the camera will restart.

Figure 4.20

Changing settings here is the same as using the IP Camera Tool. (Figure 4.23/4.24)

It is recommended that you use the subnet mask, gateway and DNS server from your locally attached PC. If you don't know the subnet mask, gateway and DNS server, you can check your computer's local area connection as follows:

Control Panel--Network Connections--Local Area Connections --Choose Support--Details.

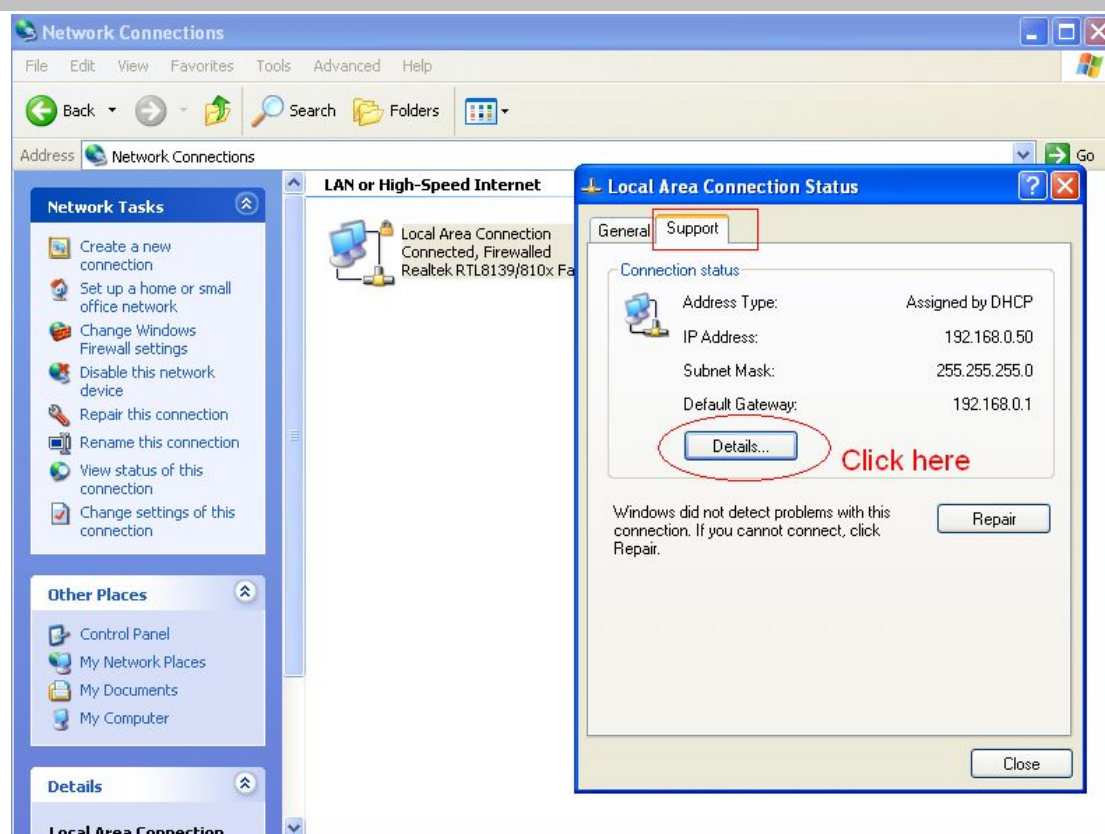


Figure 4.21

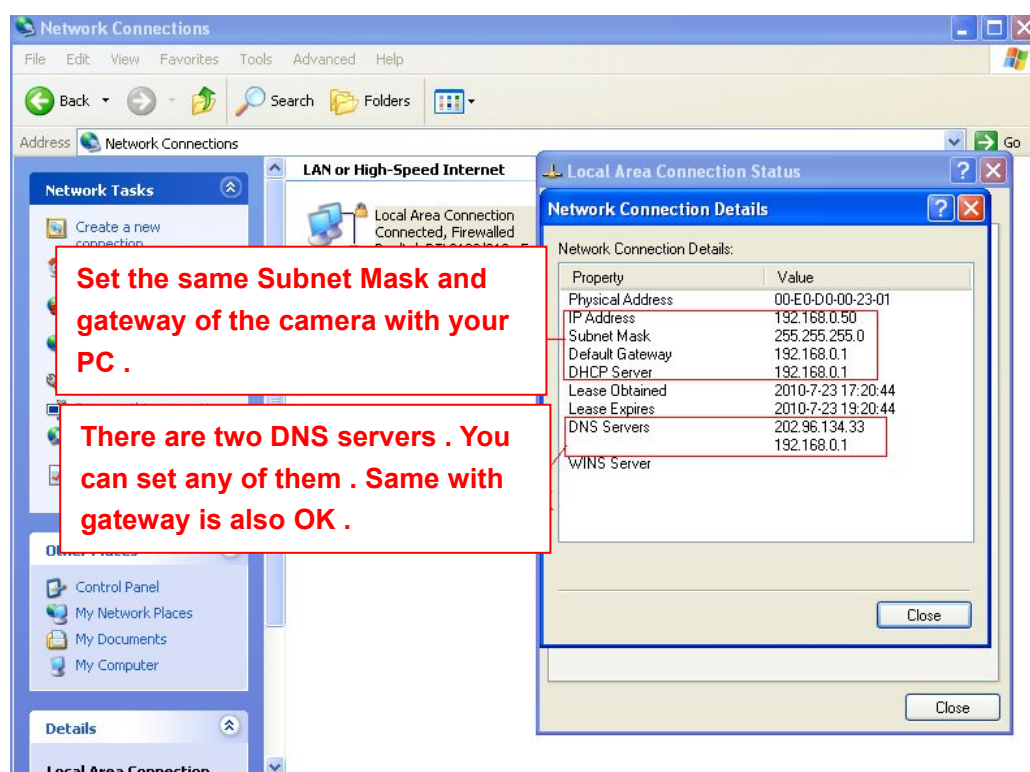


Figure 4.22

If you don't know the DNS server, you can use the same settings as the Default Gateway.

4.3.2 Wireless Settings

Step 1: Choose “Settings” on the top of the camera interface, and go to the “Network” panel on the left side of the screen, then click “Wireless Settings.”

Click the **Scan** button and the camera will detect all wireless networks around the area. It should also display your router in the list.

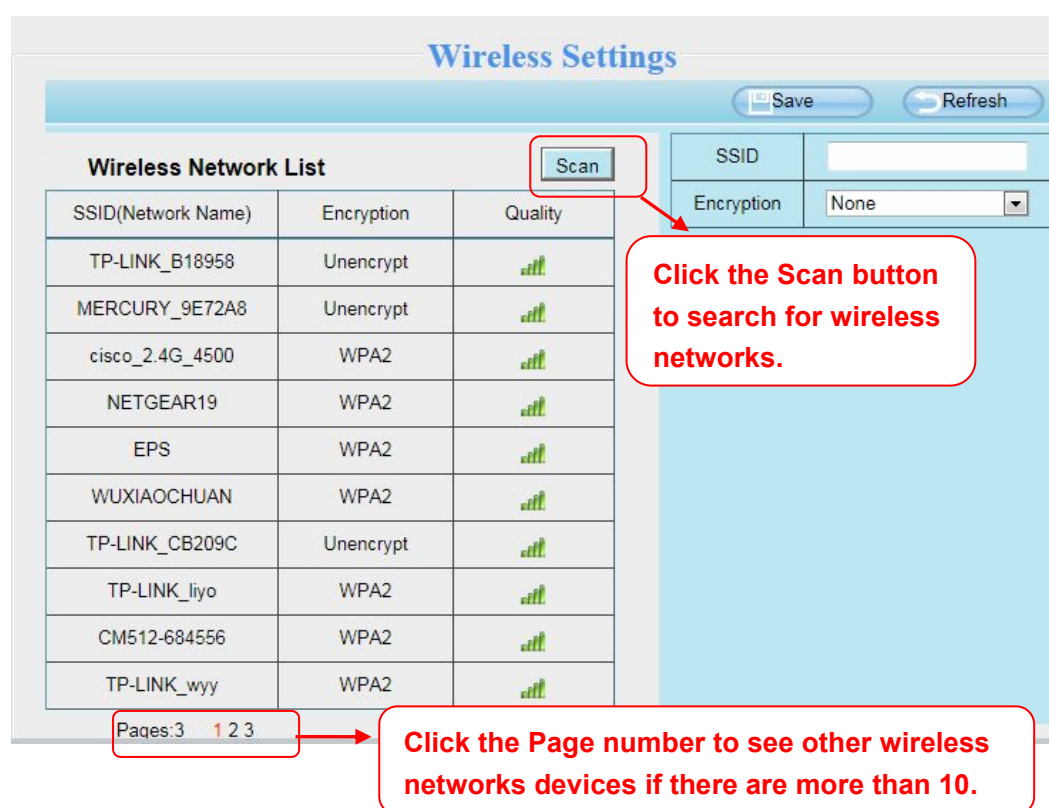


Figure 4.1

Step 2: Click the SSID (name of your router) in the list, the corresponding information related to your network, such as the name and the encryption, will be filled into the relevant fields automatically.

You will only need to fill in the password of your network. Make sure that the SSID, Encryption and the password you filled in are exactly the same for your router.