

# Bluetooth Mouse

## 蓝牙鼠标

### User's Guide

使用手册

#### >> English

Congratulations on your purchase of an *1000dpi* Bluetooth Optical Mouse, this revolutionary and easy-use Bluetooth mouse will bring you the novel feeling of wireless transmitting.

### System Requirement

- z Mouse compatible with standard Microsoft mode.
- z IBM compatible PCs running Windows 2000, XP, MAC OS operating system which supports USB devices.

### Installation Guide

#### Step 1. Inserting the Batteries

- z Open the battery cover
- z Insert one included Alkaline batteries. (Please refer to the diagram above for the polarity of batteries).
- z Carefully slide the battery cover back

#### Step 2. Connecting the Mouse to the Dongle

- z Before you can install your Bluetooth mouse, please make sure you have done the Bluetooth dongle installation procedure.
- z Make sure the sliding switch be put on the "ON" position, press the "PAIR" button on the bottom of the Bluetooth mouse for 4-6 seconds. The mouse will be switched to the standby mode for pairing, the red light LED will flash., Note: the "PAIR" button is only used for pairing operation

## z Pairing Steps

### A. Use Bluetooth mouse on Windows XP SP2 Bluetooth stack steps

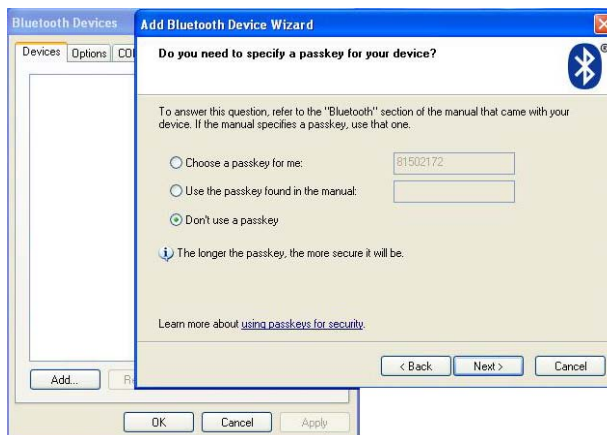
- 1) . Make sure the bluetooth function have been activated on the computer system, double click the BTW icon, then click the "add".



- 2) . Select "My device is set up and ready to be found", when find the Bluetooth mouse, you can select it and click "next"



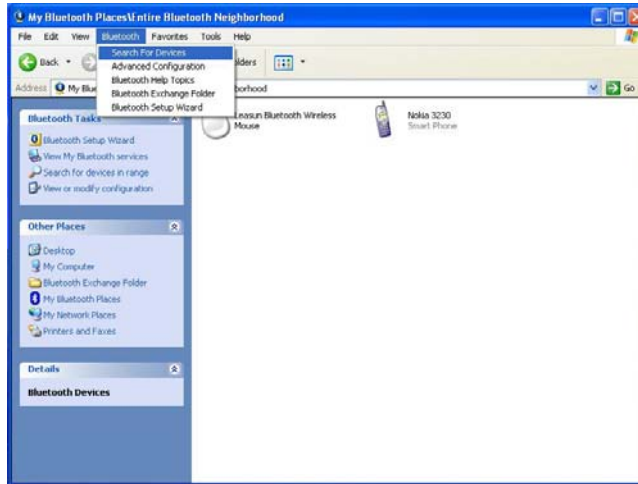
- 3) . Select "Don't use passkey", and click "next", operating system will auto-installate the bluetooth HID device.



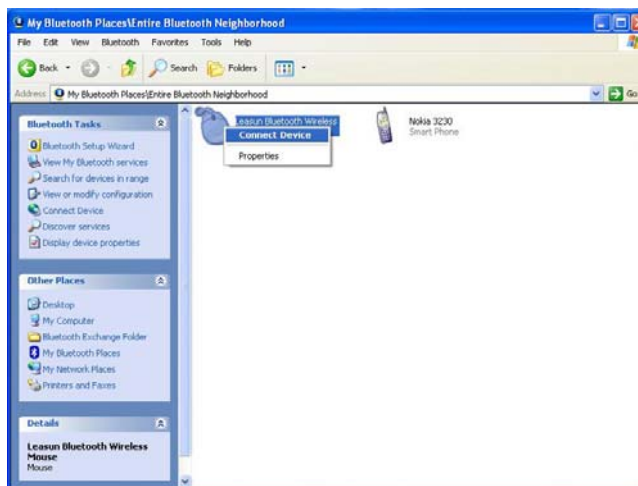
### B. Use Bluetooth mouse on VIDCOMM Bluetooth stack steps

- 1) . Make sure the bluetooth function have been activated on the computer

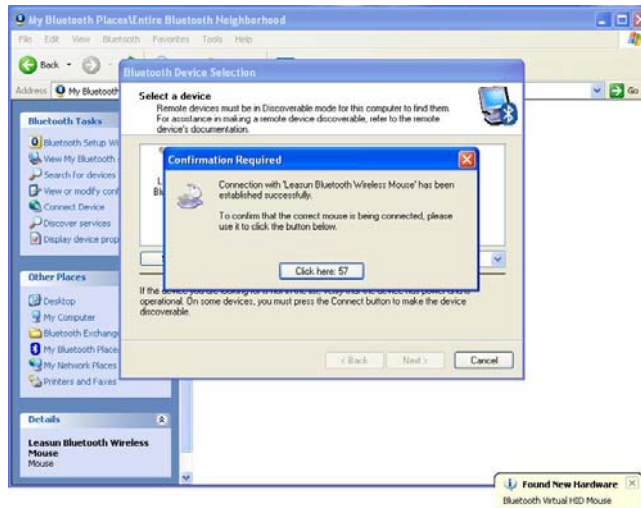
system, double click the BTW icon in toolbar, select “Bluetooth” and click "search for devices"



2) . Select the Bluetooth mouse icon, press right button and select “Connect Device”

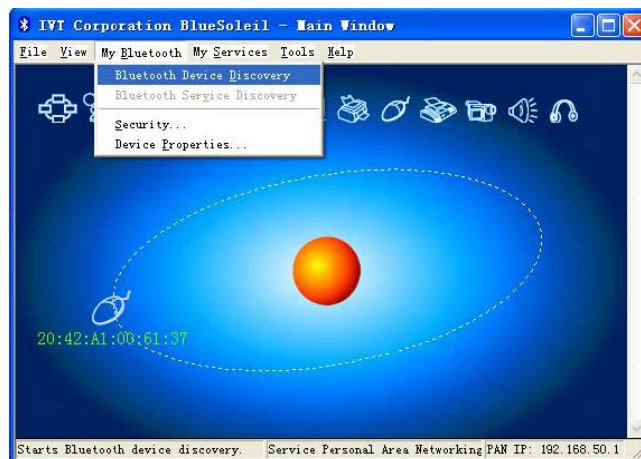


3) . Then come out the following window, after complete confirming, the operating system will auto-installate the new bluetooth HID device.

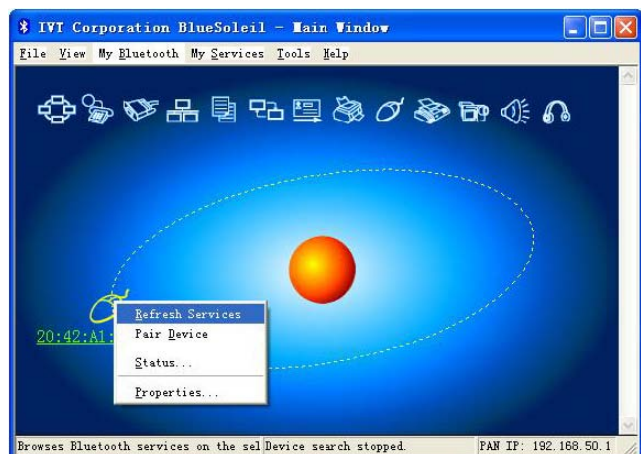


C. Use Bluetooth mouse on IVT Bluetooth stack steps

- 1) .Make sure the bluetooth function have been activated on the computer system, double click the BTW icon in toolbar, then click "Bluetooth Device Discovery" under "My Bluetooth" in toolbar.

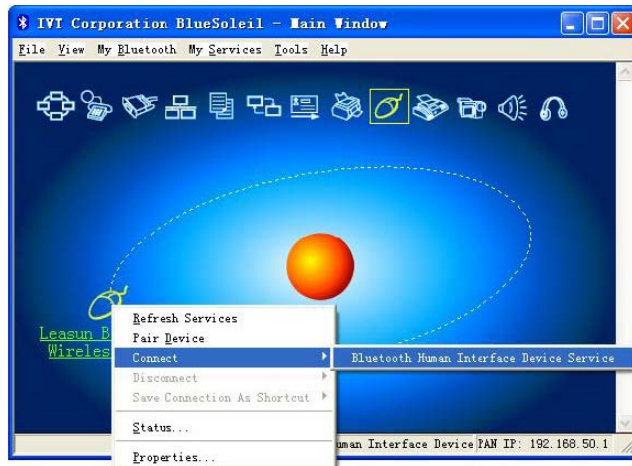


- 2) . Select the found bluetooth mouse device, press the right button and select "Refresh Services"



- 3) . Then select the Bluetooth mouse icon, press right button to select "Connect" and click "Bluetooth Human Interface Device Service" the

operating system will auto-install the new bluetooth HID device.



## Product Specifications

z Bluetooth Specification:	Version 3.0 Class 2
z Range of Frequency:	2.4GHz Spectrum
z Operating Voltage:	1.5 Vdc ( powered by AA batteries )
z Operating Current:	< 15mA, operate on a white paper < 25mA, operate on a black paper
z Standby Current:	3 ~ 5mA
z Sleep Current:	< 300uA
z Transmit Range:	up to 10 meters
z Storage Temperature:	-40 ~ +125 degree

## Troubleshooting

If you are unable to connect your mouse to PC or can not use normally, please try the following:

- z Ensure your bluetooth device of PC is properly starting up
- z Ensure Bluetooth mouse has been paired to PC (If you have completed the connection before, but started up the connection button later, then you have to re-connect them )

⌘ Ensure the Bluetooth mouse is within a 10 meters range of your PC ⌘ Ensure your bluetooth device of PC have not be changed.(you have to re-connect if changed)

⌘ If your PC bluetooth still connect other bluetooth device, make sure there is enough data for them. ⌘ Open the cover of batteries, and reset the batteries.

If the above steps do not solve your problem, please replacing the batteries

### ***Precaution***

! The optical mouse cannot work on a glass or mirror surface. Avoid operating this mouse on a glossy surface. Otherwise, this mouse may not operate normally.

! For consideration of saving battery power, it is strongly recommended to operate an optical mouse on a bright surface with fine texture to obtain lower power consumption of the Agilent high illumination LED, A very dark surface will cause higher power consumption.

! For a better transmission distance, avoid to use this device on a metal plate or desktop because a larger surface of iron, aluminum, Operating on a metal may cause the transmission distance shorter.

### **Federal Communication Commission Interference Statement**

Changes or modifications not expressly approved by the party responsible for compliance could void the user's authority to operate the equipment.

This device complies with Part 15 of the FCC Rules. Operation is subject to the following two conditions: (1). This device may not cause harmful interference., (2). This device must accept any interference received, including interference that may cause undesirable operation.

**Dispose of batteries according to local regulations. Do not dispose as household waste**

## >> 简体中文

恭喜您选择了1000dpi高分辨率的蓝牙鼠标，一个创新及容易使用的蓝牙光电鼠标，将给您带来无线传送的新感觉。

### 系统要求

z 兼容微软标准模式 z IBM兼容PC，Windows2000, XP, MAX OS操作系统，支持USB设备

### 安装向导 步骤

#### 1 放入电池

- 1 打开电池盖
- 2 按极性正确放入一节碱性电池
- 3 轻轻把电池盖盖上

#### 步骤2: 连接鼠标和适配器

- z 在安装蓝牙鼠标之前，必须确认蓝牙适配器已经完成安装程序；
- z 打开电源开关，按住鼠标底部的“配对”（如果没有配对键，可左、中、右同按一下）键，鼠标被激活进入配对模式，红色LED灯将会闪烁，注意：配对键仅在配对时才使用。

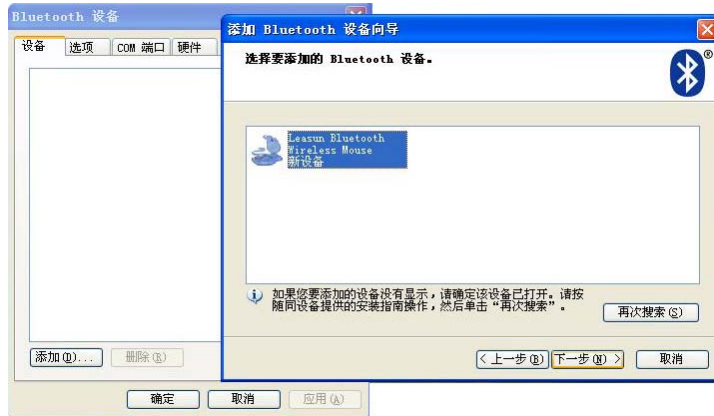
### z 配对步骤

#### A. Windows XP SP2 蓝牙栈上的蓝牙鼠标配对步骤

- 1) . 确定电脑的蓝牙功能已经激活，双击工具栏中的蓝牙图标，点击蓝牙设备窗口上的“添加”按键。



- 2) . 选中“我设备已经设置并且准备好，可以查找”，一旦找到蓝牙鼠标设备，然后选择鼠标设备，单击“下一步”

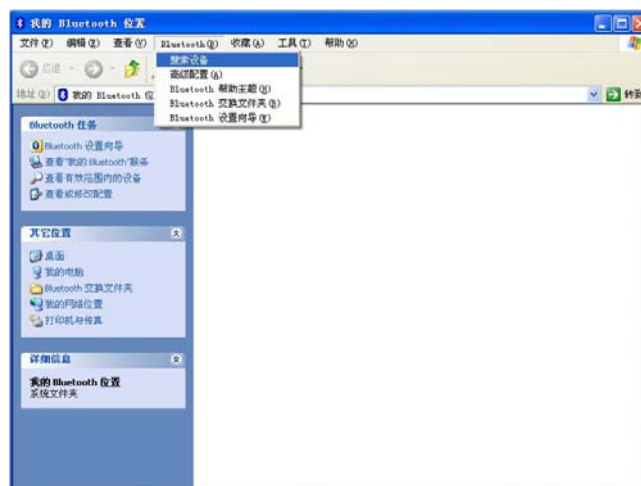


3). 选中“不使用密钥”，并按“下一步”，操作系统将对新的蓝牙 HID设备自动完成安装。



## B. VIDCOMM 蓝牙栈上的蓝牙鼠标配对步骤

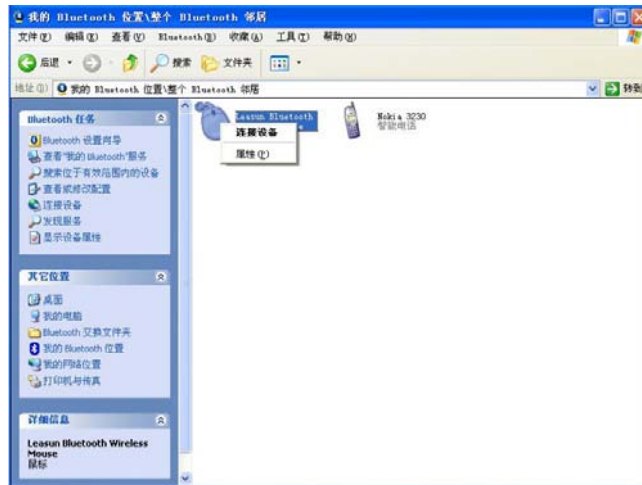
1). 确定电脑的蓝牙功能已经激活, 双击工具栏中的蓝牙图标, 点击“Bluetooth”栏目下拉菜单中的“搜索设备”



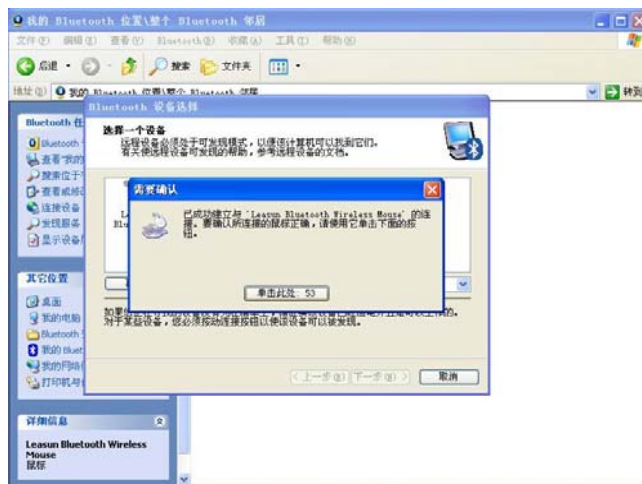
2). 选中的蓝牙鼠标设备图标, 按右键选择“连接设备”

3). 然后出现如下窗口, 完成确认, 操作系统将对新的蓝牙 HID设备



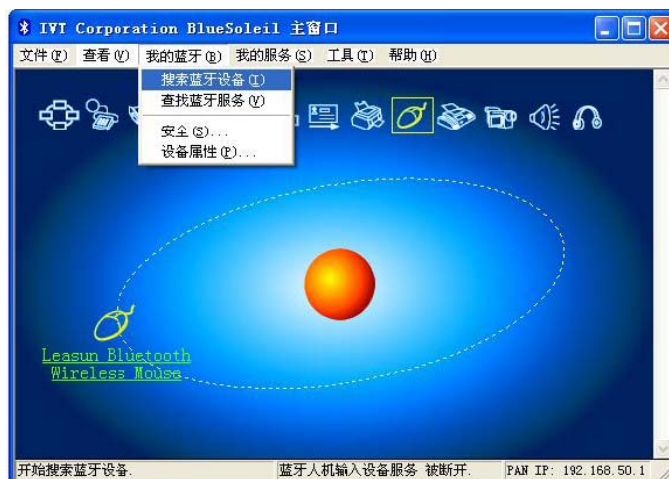


自动完成安装。

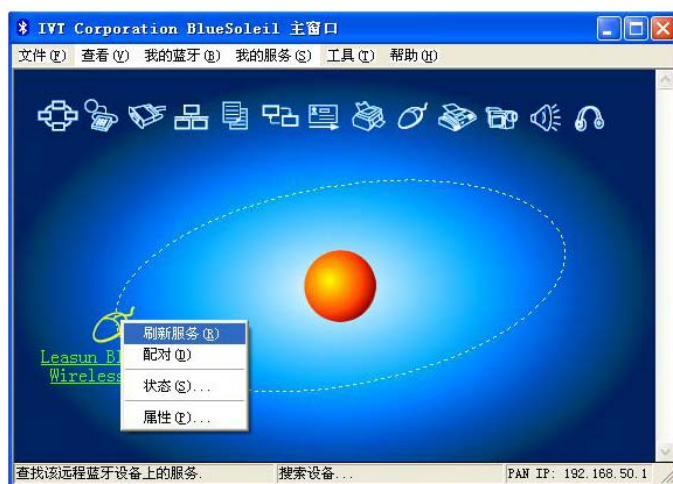


### C: IVT 蓝牙栈上的蓝牙鼠标配对步骤

- 1). 确定电脑的蓝牙功能已经激活，双击工具栏中的蓝牙图标，点击“我的蓝牙”栏目下拉菜单中的“搜索蓝牙设备”



- 2). 点中搜索到的蓝牙鼠标设备，右键选择“刷新服务”



- 3). 再选中蓝牙鼠标设备，按右键选择和点击“连接”中的“蓝牙人机输入设备服务”，操作系统将对新的蓝牙HID设备自动完成安装。



### 产品规格

- z 蓝牙规格: 3.0第二级
- z 频率范围: 2.4GHz频谱
- z 工作电压: 1.5V 直流电压 (AA电池提供)
- z 工作电流: < 15mA (白面上工作电流)  
< 25mA (黑面上工作电流)
- z 待机电流: 3 ~ 5mA
- z 休眠电流: < 300uA
- z 传输距离: 达到10米
- z 储备温度: -40° C ~ +125° C

### 疑难排解

若您未能将蓝牙鼠标与电脑连接上或者未能正常使用，请尝试以下步骤:

- z 确保电脑蓝牙设备已经正确启动
- z 确保电脑与蓝牙鼠标已经配接（如果以前已经配接好该电脑，但中途启动了配对键，则须重新配接）
- z 确保蓝牙鼠标使用在10米的工作范围之内
- z 确保电脑蓝牙设备没有改变（若改变了须重新配接）
- z 如果你的电脑蓝牙设备还连接了其他蓝牙终端，确认电脑蓝牙设备的速度是否已经足够
- z 打开电池盒，重置电池

如果以上步骤仍未能排解疑难，请更换电池

## 警示

光电鼠标不能在玻璃面或者镜面上操作，避免在过于光滑的面上操作鼠标，否则鼠标将不能正常使用。

考虑到节约电池电量方面，建议在较明亮的有均匀纹理组织的面上操作鼠标，否则在过黑的面上操作，LED灯将达到最大光亮状态，这样将消耗较大电量。

为达到最大传输距离，避免在有金属障碍物的情况下操作，这样会缩短使用距离。

## 美国通信委员会（FCC）安全声明

未明确核准的负责遵守党的变更或修改，都可能导致用户无权操作本设备。

向技术专家寻求帮助此设备符合FCC part15，所以必须遵守如下两项要求：

- 1 (1) 此设备不允许导致任何有害干扰
- 2 (2) 此设备必须接受任何外来干扰，其中包括可能导致不良操作的干扰

当弃置电池时，须根据当地条例，不可当普通废物弃置