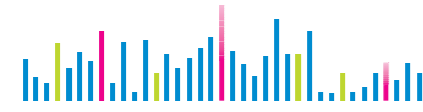


148*105mm



Soundbar

Contact Us

Email Us:

Email our team at any time at yitemamei@163.com or fill out the detailed form at www.meidongaudio.com we aim to respond to emails within 1 business day.



7: General Use

Bluetooth Mode

1. Connect unit to power. Long press the "⏻" button on the unit, or press the "⏻" button on the Remote to enter Bluetooth Mode. When the LED Flash blue Unit will start searching for a Bluetooth device to connect.
2. Make sure the Bluetooth function of your Mobile or Tablet device is turned ON (Read your related User Manual for full instructions to turn it on). This unit will show as "meidong" in the Device List, if / when Bluetooth is enabled.
3. Once connected successfully, now you will be able to select audio to play through soundbar.
4. To adjust Volume, long press the buttons +/- on the unit, or press the Volume +/- buttons on the Remote. You can also alter the sound level from device you have connected via Bluetooth. Note, always adjust to a suitable level as with high power, sound distortion can occur.
5. If connecting to Bluetooth through an adapter, you may require a password. Enter "0000" to connect.

7

7: General Use

Line In Model

1. When you wish to connect your device via AUX IN, press the "Mode" button at this time the LED Light will be "Green". To use the RCA Line, press "Mode" again and the LED Light will turn "White".
2. When in the correct mode, connect your device with the relative cable. Once connected, you will be able to select audio to play through Soundbar.
3. You can now use the "Mute" and "Volume +" or "Volume -" to control sound levels from Remote Control, there are also "Volume +/-" buttons on the unit when long pressed will operate volume.

Adapter Description:

Input Range - AC100-240V
Frequency Range - 50/60Hz
Output - DC 18V, 2A

8

8: Warranty

Details

This product is covered by the meidong Product and Labor Warranty for 12 months from the date of its original purchase. If manufacturing defects occur, please contact meidong support (yitemamei@163.com) immediately to launch a warranty claim. We will instruct you on how to return the defective unit back to us for repair or replacement. No return will be accepted without seller authorization.

The following are excluded from the meidong warranty coverage:

- Device purchased as 2nd hand, used, or from unauthorized sellers.
- Damage resulted from misuse and abusive action.
- Damage resulted from chemical, fire, radioactive substance, and poison, liquid.
- Damage resulted from natural disaster.
- Damage caused to any 3rd party / person / object and beyond.

9

9: Troubleshooting

Q: Why is the unit not turning on?
A: Please check and make sure the power cord is correctly connected to a power source.

Q: Why is there no sound or why is the sound is distorted?
A: Please go over the following:

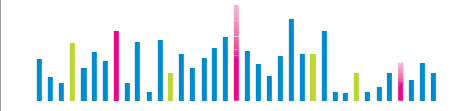
- Check to make sure the audio cables are correctly connected.
- Turn up the volume.
- Press the [MUTE] button to switch on the sound.
- Press the [PLAY/PAUSE] button.

Q: Why do the buttons on the soundbar not work?
A: Switch off the sound bar and unplug. Then connect it to a power supply and switch it on again.

Q: Why does the remote control not work?
A: Please go over the following:

- Install one CR 2025/1.5V battery into the remote.
- Replace the current battery with a new one.
- Make sure the remote control is pointed to the remote control sensor during use.
- Make sure the remote control is within operating range.
- Switch off the sound bar and disconnect the power. Then reconnect and power on again.

10



Soundbar



KY-2020

Soundbar Speaker
User Manual

1: Features and Contents

Features

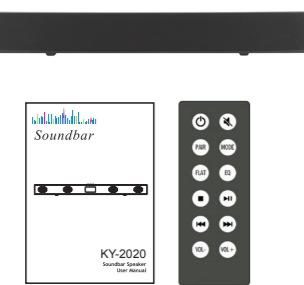
- 36" Soundbar
- 2.0 Channel Speaker System
- Stream Music via Bluetooth
- Play Music from a Smart Phone or Tablet
- 30W Total Power Usage

What's in the Box?

- 1x Soundbar Speaker
- 1x Remote Control
- Power Supply
- AV Lead
- User Manual
- AUX IN

Something Missing?

Please contact us by E-mail yitemamei@163.com or fill out a form at website www.meidongaudio.com, thank you.



2: Technical Specifications

Sound System

Channel: 2.0CH
Output: 15W*2
Freq. Response: 90~20000Hz
S/N Ratio: 80db
Impedence: 80hm
Version: Bluetooth 4.2

External Interface Function

DC Power Input: 18V Power Supply

1

FCC WARNING

This device complies with part 15 of the FCC Rules. Operation is subject to the following two conditions: (1) this device may not cause harmful interference, and (2) this device must accept any interference received, including interference that may cause undesired operation. Any changes or modifications not expressly approved by the party responsible for compliance could void the user's authority to operate the equipment.

NOTE: This equipment has been tested and found to comply with the limits for a Class B digital device, pursuant to Part 15 of the FCC Rules. These limits are designed to provide reasonable protection against harmful interference in a residential installation. This equipment generates, uses and can radiate radio frequency energy and, if not installed and used in accordance with the instructions, may cause harmful interference to radio communications. However, there is no guarantee that interference will not occur in a particular installation.

If this equipment does cause harmful interference to radio or television reception, which can be determined by turning the equipment off and on, the user is encouraged to try to correct the interference by one or more of the following measures:

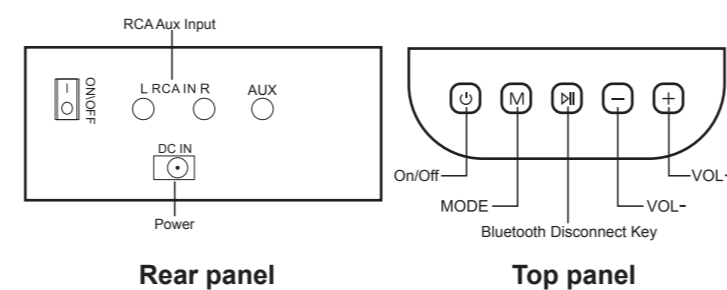
- Reorient or relocate the receiving antenna.
- Increase the separation between the equipment and receiver.
- Connect the equipment into an outlet on a circuit different from that to which the receiver is connected.
- Consult the dealer or an experienced radio/TV technician for help.

To maintain compliance with FCC's RF Exposure guidelines, This equipment should be installed and operated with minimum distance between 20cm the radiator your body: Use only the supplied antenna.

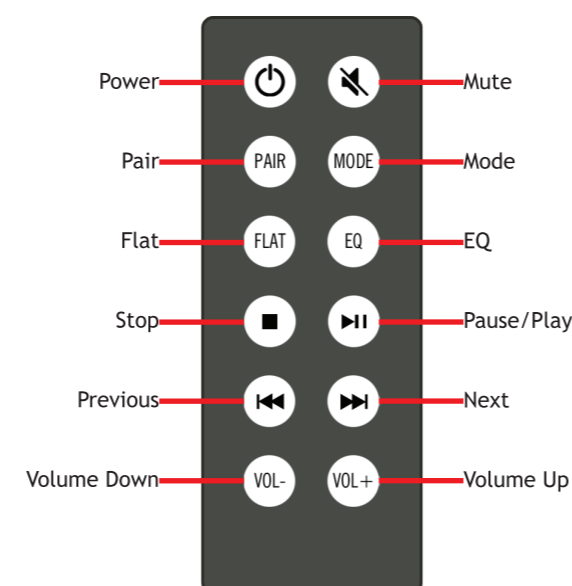
FCC ID: 2AB5T-KY-2020

2

3: Product Structure



4: Remote Control

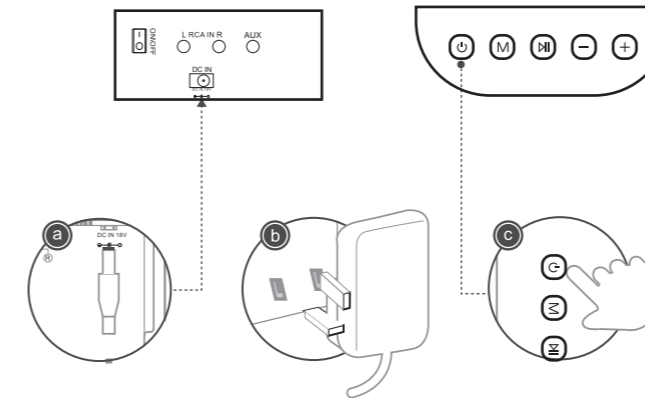


3

5: Getting Started

Powering On

The instructions below provide simple steps to help power on your soundbar.



- With the Power Supply included, insert the mains adapter plug into the rear of the unit.
- Insert the plug into a power socket and switch the power on, Then you will see the Red LED stay solid.
- Press and hold the ⏻ Button on the top of the Soundbar, The LED will flash blue, ready to pair with your device.

4

6: Using the EQ Function

Did You Know?

You can alter the frequency response of this audio system using the EQ button.



- Press the EQ button on the Remote Control repeatedly to move between the EQ modes: Rock, Pop, Jazz, Live, Classic and Vocal. The Orange LED will illuminate when EQ mode is active.
- To revert back to Default, press **FLAT** on the Remote Control. The Orange LED will turn off to indicate EQ modes are inactive.

5

7: General Use



This symbol indicates that the relevant electrical product or battery should not be disposed of as general household waste. To ensure the correct waste treatment of the product and battery, try to dispose of them in accordance with any local laws of requirement for disposal of any electrical equipment or batteries. In doing so, you will help to conserve natural resources and improve the standards of environmental protection in treatment and disposal of electrical waste.



Products with the CE marking comply with the EMC Directive (2004/108/EC) and the Low Voltage Directive (2006/95/EC) issued by the Commission of the European Community.

The socket outlet shall be installed near the equipment, and shall be easily accessible.

CAUTION: There is a risk of explosion if batteries are replaced with a type not fit for the unit. Dispose of used batteries according to the instructions.

6