

NOAA Weatherband AM/FM Radio with Bluetooth and Flashlight  
User's Guide for Model WR224R v3290-01



Important Safety Instructions

- Read these Instructions.
- Keep these Instructions.
- Heed all Warnings.
- Follow all instructions.
- Do not use this apparatus near water.
- Clean only with a dry cloth.
- Do not block any ventilation openings. Install in accordance with the manufacturer's instructions.
- Do not install near any heat sources such as radiators, heat registers, stoves, or other apparatus (including amplifiers) that produce heat.
- Do not defeat the safety purpose of the polarized or grounding - type plug. A polarized plug has two blades with one wider than the other. A grounding type plug has two blades and a third grounding prong. The wide blade or the third prong are provided for your safety. When the provided plug does not fit into your outlet, consult an electrician for replacement of the obsolete outlet.
- Protect the power cord from being walked on or pinched particularly at plugs, convenience receptacles, and the point where they exit from the apparatus.
- Only use attachments/accessories specified by the manufacturer.
- Unplug this apparatus during lightning storms or when unused for long periods of time.
- Refer all servicing to qualified service personnel. Servicing is required when the apparatus has been damaged in any way, such as power-supply cord or plug is damaged, liquid has been spilled or objects have fallen into the apparatus, the apparatus has been exposed to rain or moisture, does not operate normally, or has been dropped.
- Use only with a cart, stand, tripod, bracket, or table specified by the manufacturer, or sold with the apparatus. When a cart is used, use caution when moving the cart/apparatus combination to avoid injury from tip-over.



FCC Warnings

Warning: Changes or modifications to this unit not expressly approved by the party responsible for compliance could void the user's authority to operate the equipment.

NOTE: This equipment has been tested and found to comply with the limits for a Class B digital device, pursuant to Part 15 of the FCC Rules. These limits are designed to provide reasonable protection against harmful interference in a residential installation. This equipment generates, uses, and can radiate radio frequency energy and, if not installed and used in accordance with the instructions, may cause harmful interference to radio communications. However, there is no guarantee that interference will not occur in a particular installation. If this equipment does cause harmful interference to radio or television reception, which can be determined by turning the equipment off and on, the user is encouraged to try to correct the interference by one or more of the following measures:

- Reorient or relocate the receiving antenna.
- Increase the separation between the equipment and receiver.
- Connect the equipment into an outlet on a circuit different from that to which the receiver is connected.
- Consult the dealer or an experienced radio/TV technician for help.

Additional Warnings and Precautions

- **CAUTION:** TO PREVENT ELECTRIC SHOCK, MATCH WIDE BLADE OF PLUG TO WIDE SLOT, FULLY INSERT.
- Mains plug is used as disconnect device and it should remain readily operable during intended use. In order to disconnect the apparatus from the mains completely, the mains plug should be disconnected from the mains socket outlet completely.
- **WARNING:** Shock hazard - Do Not Open.
- **CAUTION:** Use of controls or adjustments or performance of procedures other than those specified may result in hazardous radiation exposure.
- **WARNING:** Changes or modifications to this unit not expressly approved by the party responsible for compliance could void the user's authority to operate the equipment.
- **WARNING:** Do not ingest battery, chemical burn hazard.
- Battery shall not be exposed to excessive heat such as sunshine, fire or the like.
- Lithium batteries, like all rechargeable batteries, are recyclable and should be recycled or disposed of according to state and local guidelines. They should never be disposed of in normal household waste and they should never be incinerated, as they might explode. Contact your local government for disposal or recycling practices in your area.



**WARNING:** To reduce the risk of electric shock, do not remove cover (or back). No user-serviceable parts inside. Refer servicing to qualified service personnel.



The exclamation point within an equilateral triangle is intended to alert the user to the presence of important operating and maintenance (servicing) instructions in the literature accompanying the appliance.



The lightning flash with arrowhead symbol, within an equilateral triangle, is intended to alert the user to the presence of un-insulated "dangerous voltage" within the product's enclosure that may be of sufficient magnitude to constitute a risk of electric shock to persons.



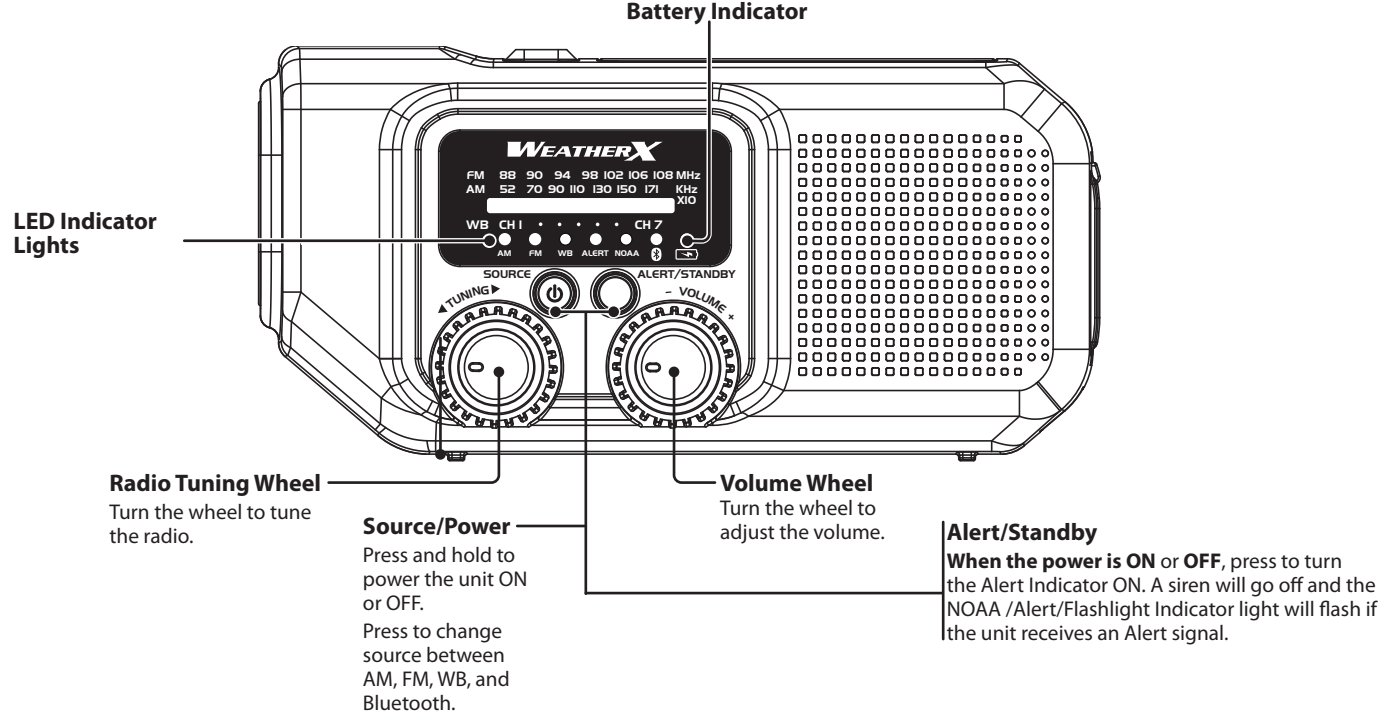
This symbol indicates that this product incorporates double insulation between hazardous mains voltage and user accessible parts.



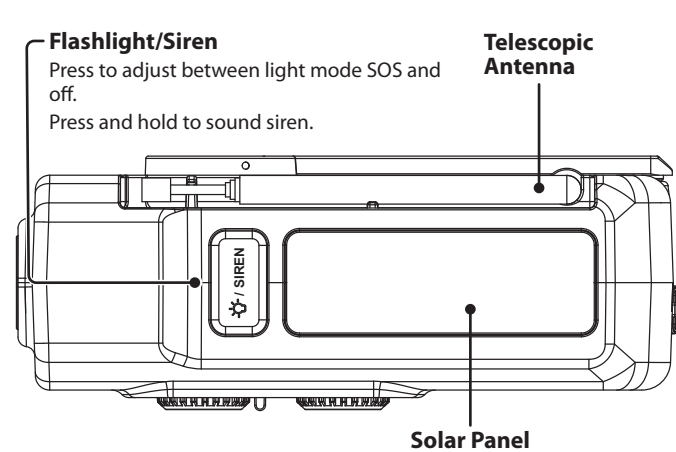
**WARNING :** This product can expose you to chemicals including lead, which is known to the State of California to cause cancer and birth defects or other reproductive harm. For more information go to: [www.P65Warnings.ca.gov](http://www.P65Warnings.ca.gov). This product meets and complies with required Federal product guidelines.

Overview

Front View

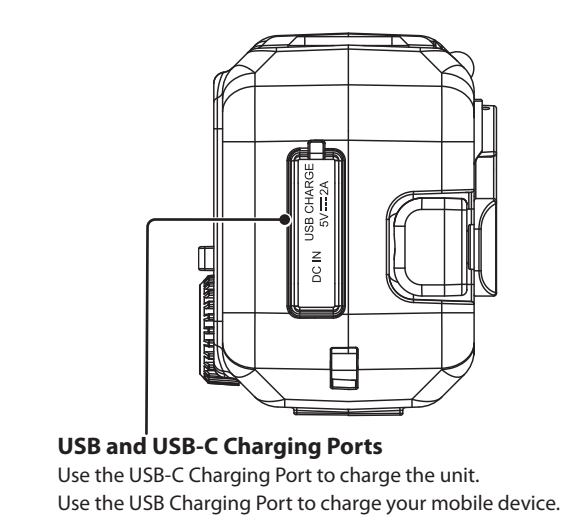


Top View



**Note:** The solar panels charge at a very slow rate. Therefore, it is best used as a supplemental charging method in addition to the charging cable.

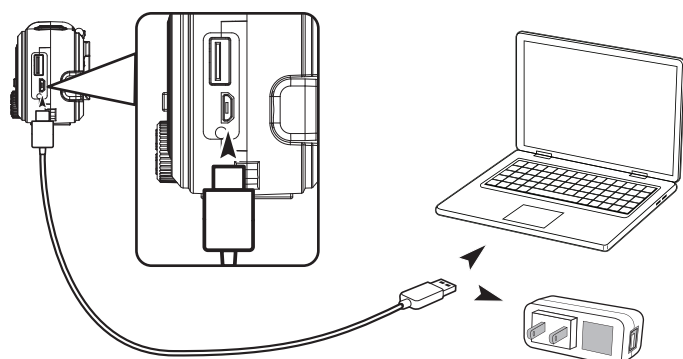
Side View



## Charging the Battery

To power the unit or charge the internal battery, plug the USB-C charging cable (included) into the **USB-C Charging Port** on the unit and the USB port of a powered-on computer or USB power adapter (not included). **Initial charge time is approximately 3 hours.**

When charging, the LED indicators will display a solid light. After the unit is fully charged, the LED indicators will display off. Low battery, the LED indicator will flicker.

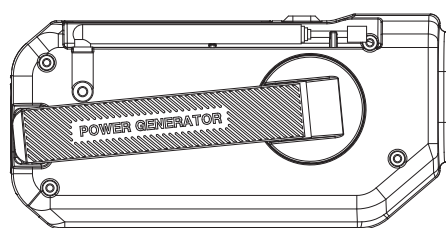


## Dynamo Hand-Crank

Make sure both the radio and the flashlight are turned to the Off position before using the Dynamo Hand-Crank.

1. Pull the **Dynamo Hand-Crank** outwards from the back of the unit.
2. Crank the handle at a speed of approximately 2 turns per second.
3. The **Battery Indicator** will turn red to indicate charging.

**Note:** Turning the handle slower than 2 turns per second could prevent the battery from charging. When using the unit for long periods of time, shut off both the flashlight and radio and recharge the battery to full capacity before continuing use.



## Bluetooth Wireless

### Initial Bluetooth Connection

1. Press and hold down the Power button to turn on the unit and it will automatically enter pairing mode. The Bluetooth Indicator LED will start flashing, indicating the unit is now in Pairing Mode. *When pairing, remain within 3 feet of the Bluetooth device.*
2. On your Bluetooth device, search for and select **WR224** in the Bluetooth Settings to pair. When successfully paired, a voice from the unit will announce "Bluetooth is connected." Audio from the connected Bluetooth device will now be heard through the unit. *If need be, refer to the user's manual for your specific device for more information.*
3. Use the controls on the connected Bluetooth device to play audio.
4. After initial pairing, the unit will remember the last connected device and will automatically pair after turning on.

### Note:

- The speaker can remember multiple Bluetooth devices and will always try to re-connect to the last device used.
- To re-connect to a different device, turn off Bluetooth on unwanted devices, then access the Bluetooth settings menu on the device you wish to use and select **WR224**.

### Troubleshooting

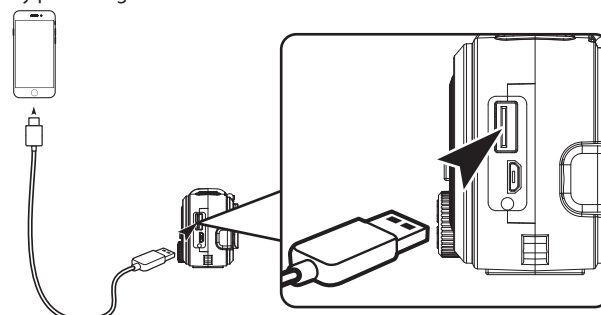
If the unit becomes unpaired from your device and will not connect normally, try the suggestions below.

- On your Bluetooth device, remove the speaker ("Forget This Device") from the list of connected devices.
- On your Bluetooth device, turn Bluetooth OFF then ON again.
- Power the unit OFF, then ON again, and repeat the **Initial Bluetooth Connection** steps.

## Charging Mobile Devices

To charge mobile devices, use an appropriate USB charging cable to connect the USB charging port (OUTPUT) on the unit and the device you wish to charge. The unit output is 5V/2A.

When charging, look at the Battery LED Indicators to see the unit's remaining battery percentage.



## Radio

### Playing the AM/FM Radio

1. Press the **Power/Source** button to set **AM or FM** as the source.
2. Turn the **Volume dial** to turn on the radio and set the desired volume.
3. Adjust the **Tuning dial** to tune the radio.
4. Adjust the position of the **Telescopic Antenna** to improve radio reception.

### Playing Weatherband

1. Press the Source button to set **WB** as the source.
2. Turn the **Volume dial** to turn on the radio and set the desired volume.
3. Adjust the **Tuning dial** to tune one of the indicated weatherband frequencies.
4. For a list of which areas receive which frequency, visit: <http://www.weather.gov/nwr/nwrbro.htm>.

## NOAA Alert Mode

1. When the radio is on, tune to the strongest local NOAA weather channel.
2. Press **Alert/Standby** button to enter standby mode. The **Alert** Indicator will be On.
3. When a NOAA alert signal is received, the **Alert/NOAA/Flashlight** will flash and siren will sound.
4. Press **Alert/Standby** button to turn off the indicators/siren and the unit will go to **WB** mode.

### Note:

- The radio will continue to drain battery while in standby mode.
- NOAA Weatherband is a service broadcast of the U.S. Government available in all 50 states, Puerto Rico, and the U.S. Virgin Islands.
- The NOAA Weather Service broadcasts a test alert every Wednesday between 10AM and Noon local time. To receive the broadcasts, the radio must be within 10–40 miles of the broadcast site, depending on terrain and obstructions.

To learn more or to find the weather band channel for your area, go to: <http://www.nws.noaa.gov/nwr/> for NOAA (National Oceanic & Atmospheric Administration) or <https://weather.gc.ca/> for Canada Weather.

## Customer Support

To download this User's Guide in English, Spanish, or French, or to get answers to frequently asked questions, visit the support section at: **www.weather-x.com**

Para descargar este Manual del Usuario en inglés, español y francés, o para obtener respuestas a preguntas frecuentes, visite la sección de apoyo en: **www.weather-x.com**

Pour télécharger ce guide de l'utilisateur en anglais, espagnol ou français, ou pour obtenir des réponses à des questions fréquemment posées, consultez la rubrique d'assistance sur: **www.weather-x.com**

For Warranty Information and the most up-to-date version of this User's Guide, go to **www.weather-x.com**

Customer Service: **1-888-999-4215**  
Email Support: **prodinfo@dpiinc.com**  
Email Parts: **partsinfo@dpiinc.com**

Copyright © 2024 Digital Products International (DPI, Inc.) All other trademarks appearing herein are the property of their respective owners. Specifications are subject to change without notice.

