

FCC WARNINGS

- Warning: Changes or modifications to this unit not expressly approved by the party responsible for compliance could void the user's authority to operate the equipment.

NOTE: This equipment has been tested and found to comply with the limits for a Class B digital device, pursuant to Part 15 of the FCC Rules. These limits are designed to provide reasonable protection against harmful interference in a residential installation. This equipment generates, uses, and can radiate radio frequency energy and, if not installed and used in accordance with the instructions, may cause harmful interference to radio communications. However, there is no guarantee that interference will not occur in a particular installation. If this equipment does cause harmful interference to radio or television reception, which can be determined by turning the equipment off and on, the user is encouraged to try to correct the interference by one or more of the following measures:

- Reorient or relocate the receiving antenna.
- Increase the separation between the equipment and receiver.
- Connect the equipment into an outlet on a circuit different from that to which the receiver is connected.
- Consult the dealer or an experienced radio/TV technician for help.

The device has been evaluated to meet general RF exposure requirement. The device can be used in portable exposure condition without restriction
FCC ID:2AB4KMETHYH256B

This device complies with Part 15 of the FCC Rules. Operation is subject to the following two conditions: (1) this device may not cause harmful interference, and (2) this device must accept any interference received, including interference that may cause undesired operation.

ADDITIONAL WARNINGS

- WARNING: To prevent fire or shock hazards, do not expose this unit to rain or moisture.
- WARNING : Where the mains plug or appliance coupler is used as the disconnect device, such disconnect device shall remain readily operable.
- Lithium batteries, like all rechargeable batteries, are recyclable and should be recycled or disposed of according to state and local guidelines. They should never be disposed of in normal household waste, and they should never be incinerated, as they might explode. Contact your local government for disposal or recycling practices in your area.
- WARNING: This product may contain chemicals known to the State of California to cause birth defects, or other reproductive harm (California Prop 65). Wash hands after handling.
- This product meets and complies with all Federal regulations.

International Support

To download this User's Guide in English, Spanish, or French, or to get answers to frequently asked questions, visit the support section at:
www.iLiveElectronics.com

Para descargar este Manual del Usuario en Inglés, Español y Francés, o para obtener respuestas a preguntas frecuentes, visite la sección de apoyo en:
www.iLiveElectronics.com

Pour télécharger ce guide de l'utilisateur en Anglais, Espagnol ou Français, ou pour obtenir des réponses à des questions fréquemment posées, consultez la rubrique d'assistance sur:
www.iLiveElectronics.com

Contact Information

Website: www.iLiveElectronics.com

Email Support: prodinfo@dpiinc.com

Email Parts: partsinfo@dpiinc.com

Phone Support: 1-888-999-4215

Warranty

For Warranty Information and the most up-to-date version of this User's Guide, go to:
www.iLiveElectronics.com.



**Protect for Today
Sustain for Tomorrow**

Specifications are subject to change without notice.

Copyright © 2016 Digital Products International (DPI, Inc.)

All other trademarks appearing herein are the property of their respective owners.



Portable Color Changing Wireless Speaker

User's Guide for Model ISB16B-1643-01

Features

- Supports Bluetooth
- Wireless range: 60 feet
- Aux In (3.5mm audio input)
- Color changing fiber optic lights
- Micro-USB port for battery recharge
- DC battery power: built-in rechargeable lithium ion battery
- Battery life: approx. 2 hours

Includes

- Micro-USB to USB charging cable

Overview & Controls

Rear Inputs



Aux In

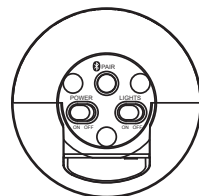
Pairing Indicator
(Blue)

Battery Indicator
(Red)

DC Power Input

Use with USB charging cable (included).

Bottom Controls



Power ON/OFF

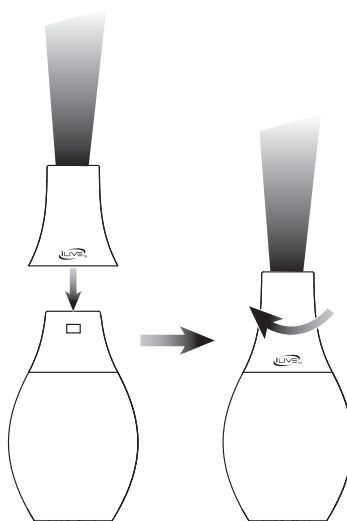
Pair

Press and hold to pair to a Bluetooth device.

Lights ON/OFF

Operates separately from main power switch.

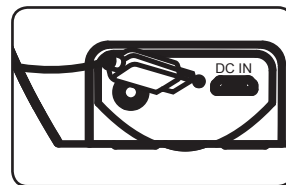
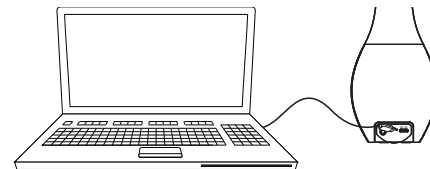
Top Attachment



Battery Power

Initial charge time is approximately 2 hours. Charge fully before use. When the battery is charging, the indicator light will turn solid red, and turn off when charging is complete.

1. Using a **Micro-USB to USB** cable (included), connect to the USB port of a powered on computer or USB power adaptor (not included) to charge the unit.



Pairing Bluetooth & Playing Audio

If your device should become unpaired, or you find it is unable to connect normally, repeat the steps below.

1. Press and hold the **Pair** button to begin pairing. *When pairing, remain within 3 feet of the unit.*
2. Using the controls on your Bluetooth device, select **ISB16** in your Bluetooth settings to pair. *If your device requests a password, enter the default password **0000**.*
3. Refer to the user's manual for your specific device for instructions on pairing and connecting Bluetooth devices. *After initial pairing, the unit will stay paired unless unpaired manually by the user, or erased due to a reset of the device.*
4. Use the controls on the connected Bluetooth device to **select and begin playing** an audio. Audio played from the connected Bluetooth device should now be heard through the unit.