

# TEST REPORT

**Reference No.**..... : WTS15S0528870E  
**FCC ID** ..... : 2AB3XIC6005  
**Applicant**..... : Infocare Industries Corporation Limited  
**Address**..... : 2/3 F., 1# Bldg., Denuo Industrial Zone, No. 7, Pingxi 7 Rd., Nanping Industrial Technology Park, Zhuhai ,Guangdong, China 519060  
**Manufacturer** ..... : Infocare Industries Corporation Limited  
**Address**..... : 2/3 F., 1# Bldg., Denuo Industrial Zone, No. 7, Pingxi 7 Rd., Nanping Industrial Technology Park, Zhuhai ,Guangdong, China 519060  
**Product Name**..... : Digital cooking thermometer  
**Model No.** ..... : IC6005(81-002)  
**Standards**..... : FCC CFR47 Part 15 Section 15.231: 2013  
**Date of Receipt sample** .... : May. 18, 2015  
**Date of Test**..... : May. 18~Jun 29, 2015  
**Date of Issue**..... : Jun. 30, 2015  
**Test Result**..... : **Pass**

**Remarks:**

The results shown in this test report refer only to the sample(s) tested, this test report cannot be reproduced, except in full, without prior written permission of the company. The report would be invalid without specific stamp of test institute and the signatures of compiler and approver.

**Prepared By:**

**Waltek Services (Shenzhen) Co., Ltd.**

Address: 1/F., Fukangtai Building, West Baima Road, Songgang Street, Baoan District, Shenzhen, Guangdong, China

Tel :+86-755-83551033

Fax:+86-755-83552400

Compiled by:



Zero Zhou / Project Engineer

Approved by:



Philo Zhong / Manager

## 2 Test Summary

Test Items	Test Requirement	Result
Conducted Emissions	15.207	N/A
Radiated Spurious Emissions	15.205(a) 15.209 15.231(e)	PASS
Periodic Operation	15.231(e)	PASS
20dB Bandwidth	15.231(c)	PASS
Antenna Requirement	15.203	PASS

### 3 Contents

	Page
<b>1 COVER PAGE</b> .....	<b>1</b>
<b>2 TEST SUMMARY</b> .....	<b>2</b>
<b>3 CONTENTS</b> .....	<b>3</b>
<b>4 GENERAL INFORMATION</b> .....	<b>4</b>
4.1 GENERAL DESCRIPTION OF E.U.T. ....	4
4.2 DETAILS OF E.U.T.....	4
4.3 TEST FACILITY.....	4
<b>5 EQUIPMENT USED DURING TEST</b> .....	<b>5</b>
5.1 EQUIPMENTS LIST .....	5
5.2 MEASUREMENT UNCERTAINTY .....	5
5.3 TEST EQUIPMENT CALIBRATION .....	5
<b>6 CONDUCTED EMISSION TEST</b> .....	<b>6</b>
<b>7 RADIATED SPURIOUS EMISSIONS</b> .....	<b>7</b>
7.1 EUT OPERATION.....	7
7.2 TEST SETUP .....	8
7.3 SPECTRUM ANALYZER SETUP .....	9
7.4 TEST PROCEDURE .....	10
7.5 SUMMARY OF TEST RESULTS .....	11
<b>8 PERIODIC OPERATION</b> .....	<b>12</b>
<b>9 20DB BANDWIDTH</b> .....	<b>14</b>
9.1 TEST PROCEDURE .....	14
9.2 TEST RESULT .....	14
<b>10 ANTENNA REQUIREMENT</b> .....	<b>15</b>
<b>11 PHOTOGRAPHS OF TESTING</b> .....	<b>16</b>
11.1 RADIATION EMISSION TEST SETUP MODEL IC6005(81-002).....	16
<b>12 PHOTOGRAPHS - CONSTRUCTIONAL DETAILS</b> .....	<b>18</b>
12.1 IC6005(81-002) - APPEARANCE VIEW .....	18
12.2 IC6005(81-002) - INTERNAL VIEW .....	26

## 4 General Information

### 4.1 General Description of E.U.T.

<b>Product Name</b>	: Digital Cooking thermometer
<b>Model No.</b>	: IC6005(81-002)
<b>Model Difference</b>	: N/A
<b>Type of Modulation</b>	: ASK
<b>Frequency Range</b>	: 433.92 MHz
<b>The Lowest Oscillator</b>	: 32.678kHz
<b>Antenna installation</b>	: Integrated Antenna

### 4.2 Details of E.U.T.

<b>Technical Data</b>	: DC 3.0V, Max. 20mA
-----------------------	----------------------

### 4.3 Test Facility

The test facility has a test site registered with the following organizations:

- **IC – Registration No.: 7760A-1**

Waltek Services (Shenzhen) Co., Ltd. has been registered and fully described in a report filed with the Industry Canada. The acceptance letter from the Industry Canada is maintained in our files. Registration 7760A-1, July 12, 2012.

- **FCC Test Site 1#– Registration No.: 880581**

Waltek Services(Shenzhen) Co., Ltd. EMC Laboratory `has been registered and fully described in a report filed with the (FCC) Federal Communications Commission. The acceptance letter from the FCC is maintained in our files. Registration 880581, April 29, 2014.

- **FCC Test Site 2#– Registration No.: 328995**

Waltek Services(Shenzhen) Co., Ltd. EMC Laboratory `has been registered and fully described in a report filed with the (FCC) Federal Communications Commission. The acceptance letter from the FCC is maintained in our files. Registration 328995, December 3, 2014.

## 5 Equipment Used during Test

### 5.1 Equipments List

3m Semi-anechoic Chamber for Radiation Emissions Test site 1#						
Item	Equipment	Manufacturer	Model No.	Serial No.	Last Calibration Date	Calibration Due Date
1	Spectrum Analyzer	R&S	FSP	100091	Apr.08,2015	Apr.07,2016
2	Amplifier	Agilent	8447D	2944A10178	Jan.14,2015	Jan.13,2016
3	Active Loop Antenna	Beijing Dazhi	ZN30900A	-	Sep.15,2014	Sep.14,2015
4	Trilog Broadband Antenna	SCHWARZBECK	VULB9163	336	Apr.19,2015	Apr.18,2016
5	Coaxial Cable (below 1GHz)	Top	TYPE16(13M)	-	Sep.15,2014	Sep.14,2015
6	Broad-band Horn Antenna	SCHWARZBECK	BBHA 9120 D	667	Apr.19,2015	Apr.18,2016
7	Broad-band Horn Antenna	SCHWARZBECK	BBHA 9170	335	Apr.19,2015	Apr.18,2016
8	Broadband Preamplifier	COMPLIANCE DIRECTION	PAP-1G18	2004	Mar.17,2015	Mar.16,2016
9	Coaxial Cable (above 1GHz)	Top	1GHz-25GHz	EW02014-7	Apr.10,2015	Apr.09,2016

### 5.2 Measurement Uncertainty

Test Item	Frequency Range	Uncertainty	Note
Radiation Emission	30MHz~1000MHz	±5.03dB	(1)
	1000M~5000MHz	± 5.47 dB	(1)

(1)This uncertainty represents an expanded uncertainty expressed at approximately the 95% confidence level using a coverage factor of k=2.

### 5.3 Test Equipment Calibration

All the test equipments used are valid and calibrated by CEPREI Certification Body that address is No.110 Dongguan Zhuang RD. Guangzhou, P.R.China.

## 6 Conducted Emission Test

Test Requirement: FCC CFR 47 Part 15 Section 15.207

Test Method: ANSI C63.4:2003

Test Result: N/A

Remark: The device is powered by batteries, it is not application for the device.

## 7 Radiated Spurious Emissions

Test Requirement: FCC Part15 Paragraph 15.231(e)

Test Method: ANSI C63.4:2003

Test Result: PASS

Measurement Distance: 3m

Limit:

Fundamental Frequency (MHz)	Field Strength of Fundamental (uV/m)	Field Strength of Fundamental (dBuV/m)	Field Strength of Spurious Emission (uV/m)	Field Strength of Spurious Emission (dBuV/m)
44.66-40.70	1000	60	100	40
70-130	500	54	50	34
130-174	500 to 1500**	54 to 63.5	50 to 150**	34 to 43.5
174-260	1500	63.5	150	43.5
260-470	1500 to 5000**	63.5 to 74	150 to 500**	43.5 to 54
Above 470	5000	74	500	54
** linear interpolations				

### 7.1 EUT Operation

Operating Environment :

Temperature: 23.5 °C

Humidity: 51.1 % RH

Atmospheric Pressure: 101.2kPa

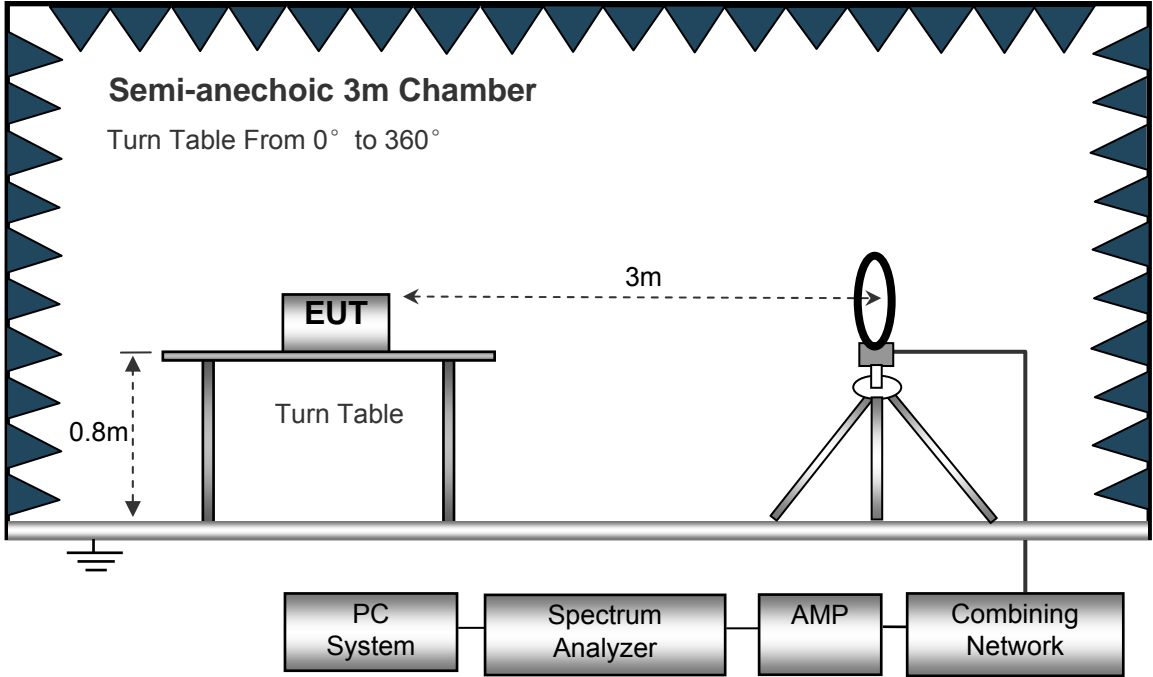
EUT Operation :

The test was performed in transmitting mode, the test data were shown in the report.

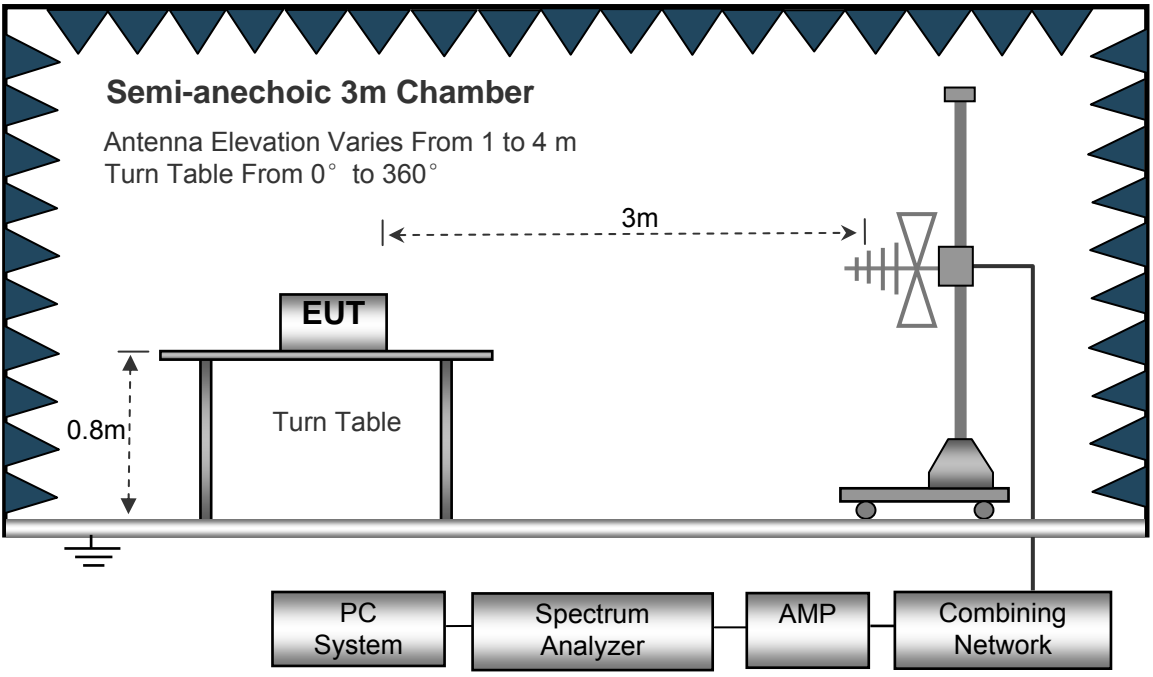
### 7.2 Test Setup

The radiated emission tests were performed in the 3m Semi- Anechoic Chamber test site, using the setup accordance with the ANSI C63.4: 2003.

The test setup for emission measurement below 30MHz.

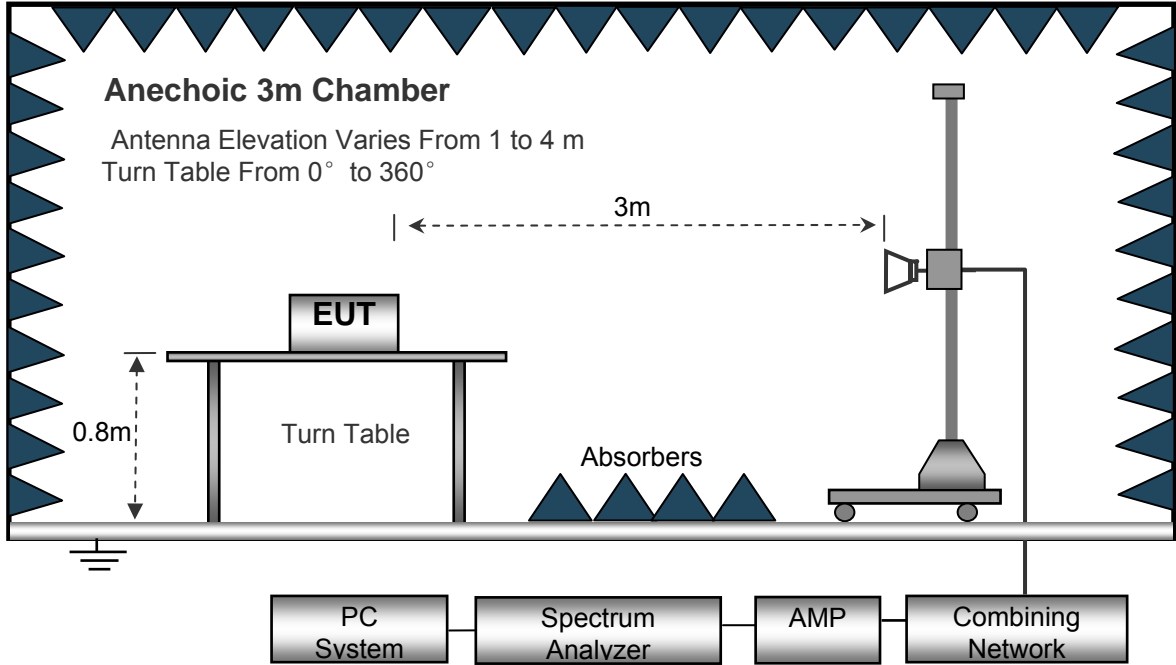


The test setup for emission measurement from 30 MHz to 1 GHz.





The test setup for emission measurement above 1 GHz.



### 7.3 Spectrum Analyzer Setup

Below 30MHz

Sweep Speed .....Auto  
 IF Bandwidth .....10kHz  
 Video Bandwidth.....10kHz  
 Resolution Bandwidth.....10kHz

30MHz ~ 1GHz

Sweep Speed .....Auto  
 Detector .....PK  
 Resolution Bandwidth.....100kHz  
 Video Bandwidth.....300kHz

Above 1GHz

Sweep Speed .....Auto  
 Detector .....PK  
 Resolution Bandwidth.....1MHz  
 Video Bandwidth.....3MHz

## 7.4 Test Procedure

1. The EUT is placed on a turntable, which is 0.8m above ground plane.
2. The turntable shall be rotated for 360 degrees to determine the position of maximum emission level.
3. EUT is set 3m away from the receiving antenna, which is moved from 1m to 4m to find out the maximum emissions. The spectrum was investigated from the lowest radio frequency signal generated in the device, without going below 9 kHz, up to the tenth harmonic of the highest fundamental frequency or to 40 GHz, whichever is lower.
4. Maximum procedure was performed on the six highest emissions to ensure EUT compliance.
5. And also, each emission was to be maximized by changing the polarization of receiving antenna both horizontal and vertical.
6. Repeat above procedures until the measurements for all frequencies are complete.
7. The radiation measurements are tested under 3-axes(X, Y, Z) position(X denotes lying on the table, Y denotes side stand and Z denotes vertical stand). After pre-test, It was found that the worse radiation emission was get at the X position. So the data shown was the X position only.

## 7.5 Summary of Test Results

### Test Frequency :From 32.768kHz to 30MHz

The measurements were more than 20 dB below the limit and not reported.

### Test Frequency : 30MHz ~ 5GHz

Frequency (MHz)	Receiver Reading (dBμV)	Detector (PK/QP/ Ave)	Turn table Angle Degree	RX Antenna		Corrected Factor (dB)	Corrected Amplitude (dBμV/m)	FCC Part 15.231/15.209/205	
				Height (m)	Polar (H/V)			Limit (dBμV/m)	Margin (dB)
433.92	77.53	PK	250	1.5	H	19.68	97.21	100.82	-3.61
433.92	82.55	PK	185	1.5	V	19.68	102.23	100.82	1.41
867.84	52.36	PK	302	1.5	H	29.71	82.07	80.82	1.25
867.84	49.56	PK	188	1.1	V	29.71	79.27	80.82	-1.55
1816.80	51.32	PK	248	1.5	H	-16.38	34.94	74.00	-39.06
1816.80	48.46	PK	179	2.0	V	-16.38	32.08	74.00	-41.92
2725.20	48.52	PK	24	1.3	H	-14.87	33.65	74.00	-40.35
2725.20	46.55	PK	201	1.1	V	-14.87	31.68	74.00	-42.32

**AV = Peak +20Log<sub>10</sub>(duty cycle) =PK+(-10.12)** [refer to section 8 for more detail]

Frequency (MHz)	PK (dBμV/m)	Turn table Angle Degree	RX Antenna		Duty cycle Factor (dB)	AV (dBμV/m)	FCC Part 15.231/209/205	
			Height (m)	Polar (H/V)			Limit (dBμV/m)	Margin (dB)
433.92	97.21	250	1.5	H	-6.29	90.92	80.82	10.10
433.92	102.23	185	1.5	V	-6.29	95.94	80.82	15.12
867.84	82.07	302	1.5	H	-6.29	75.78	60.82	14.96
867.84	79.27	188	1.1	V	-6.29	72.98	60.82	12.16
1816.80	34.94	248	1.5	H	-6.29	28.65	54.00	-25.35
1816.80	32.08	179	2.0	V	-6.29	25.79	54.00	-28.21
2725.20	33.65	24	1.3	H	-6.29	27.36	54.00	-26.64
2725.20	31.68	201	1.1	V	-6.29	25.39	54.00	-28.61

## 8 Periodic Operation

The duty cycle was determined by the following equation:

To calculate the actual field intensity, The duty cycle correction factor in decibel is needed for later use and can be obtained from following conversion

$$\text{Duty Cycle(\%)} = \text{Total On interval in a complete pulse train} / \text{Length of a complete pulse train} * \%$$

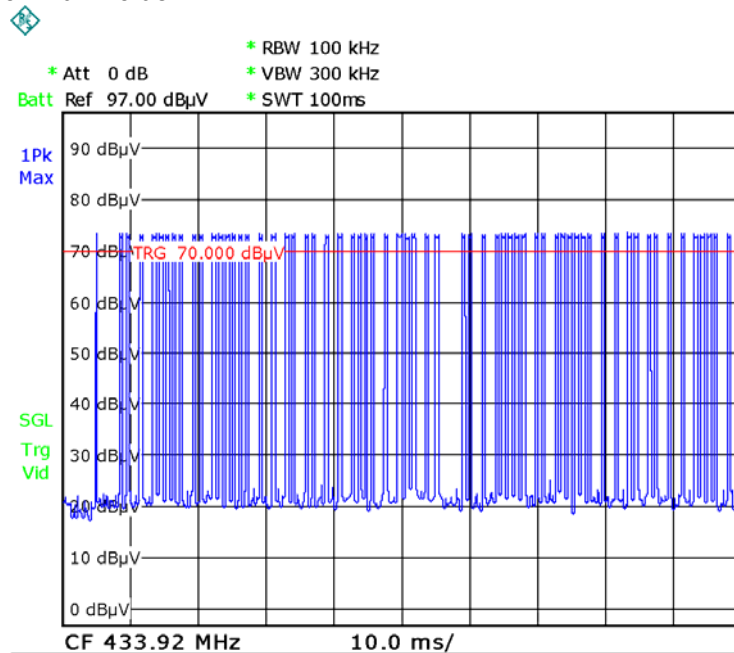
$$\text{Duty Cycle Correction Factor(dB)} = 20 * \text{Log}_{10}(\text{Duty Cycle(\%)})$$

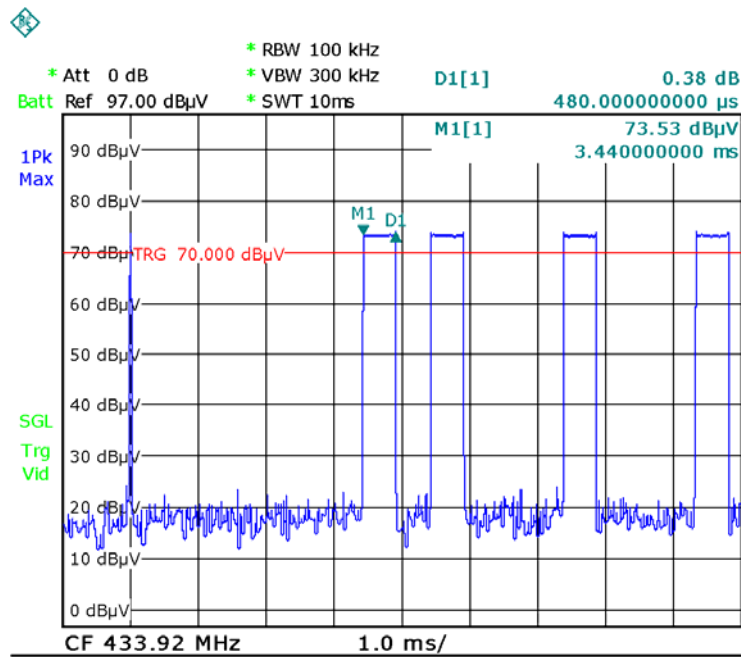
Total transmission time(ms)	100
Length of a complete transmission period(ms)	65*0.48=31.2
Duty Cycle(%)	31.2
Duty Cycle Correction Factor(dB)	-10.12

Refer to the duty cycle plot (as below), This device meets the FCC requirement.

Length of a complete pulse train:

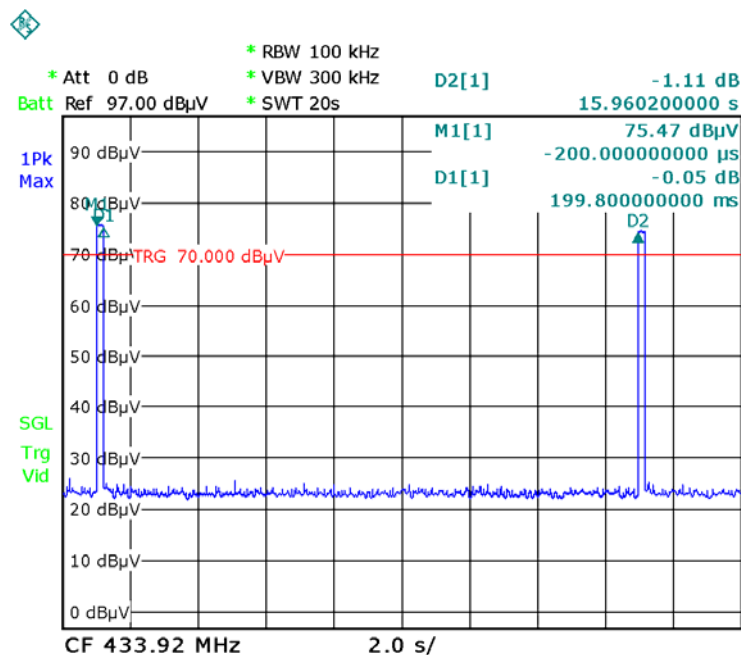
Remark: FCC part 15.35(c) required that a complete pulse train is more than 0.1 seconds, the measured field strength shall be determined from the average absolute voltage during a 0.1 second interval during which the field strength is at its maximum value.





FCC Part15.231(e) In addition, devices operated under the provisions of this paragraph shall be provided with a means for automatically limiting operation so that the duration of each transmission shall not be greater than one second and the silent period between transmissions shall be at least 30 times the duration of the transmission but in no case less than 10 seconds.

duration of the transmission	199.8ms
Limit 1	10s
Limit 2	30*199.8ms=5.994s
silent period between transmissions	15.96s
Result	PASS



## 9 20dB Bandwidth

Test Requirement: FCC Part15 C  
 Test Method: FCC Part15 Paragraph 15.231(c)  
 Limit: The bandwidth of the emission shall be no wider than 0.25% of the center frequency for devices operating above 70 MHz and below 900 MHz. For devices operating above 900 MHz, the emission shall be no wider than 0.5% of the center frequency.

### 9.1 Test Procedure

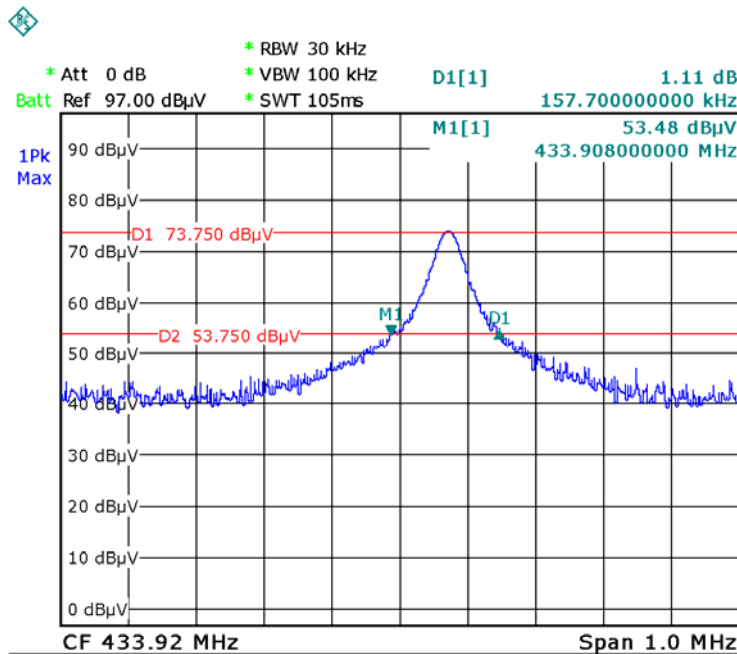
1. The transmitter output (antenna port) was connected to the spectrum analyzer.EUT and its simulators are placed on a table, let EUT working in test mode,then test it.
2. The bandwidth of the fundamental frequency was measure by spectrum analyser with 3kHz RBW and 10kHz VBW.The 20dB bandwidth is defined as the total spectrum the power of which is higher than peak power 20dB.

### 9.2 Test Result

Frequency (MHz)	Bandwidth Emission (kHz)	Limit (kHz)	Result
433.92	157.7	1084.8	Pass

Limit=Center Frequency\*0.25%

Test Plot



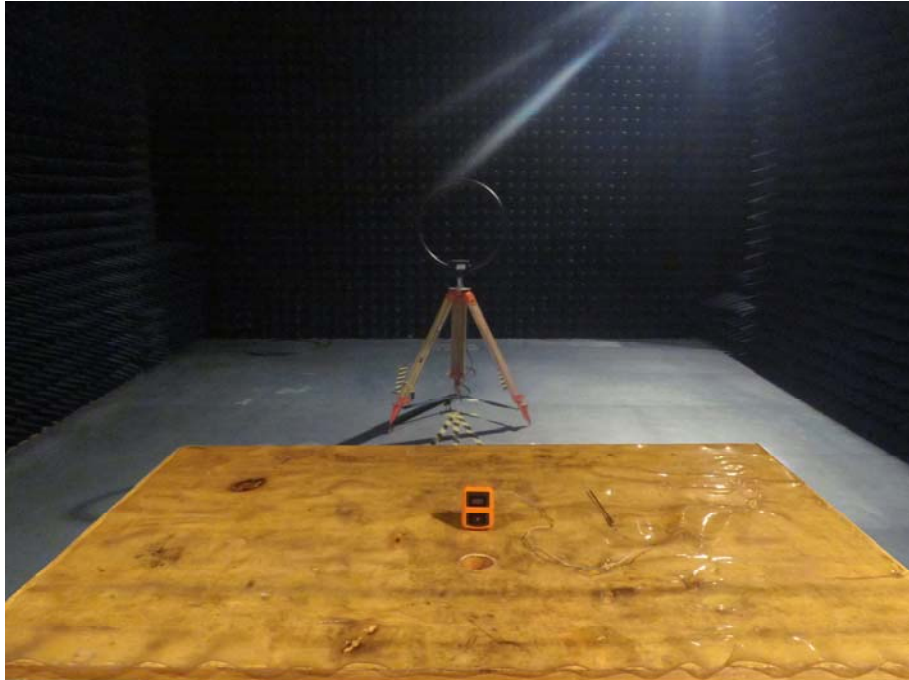
## **10 Antenna Requirement**

According to the FCC Part 15 Paragraph 15.203, an intentional radiator shall be designed to ensure that no antenna other than that furnished by the responsible party shall be used with the device. The use of a permanently attached antenna to the intentional radiator shall be considered sufficient to comply with the provisions of this section. This product use a permanent integrated antenna, fulfill the requirement of this section

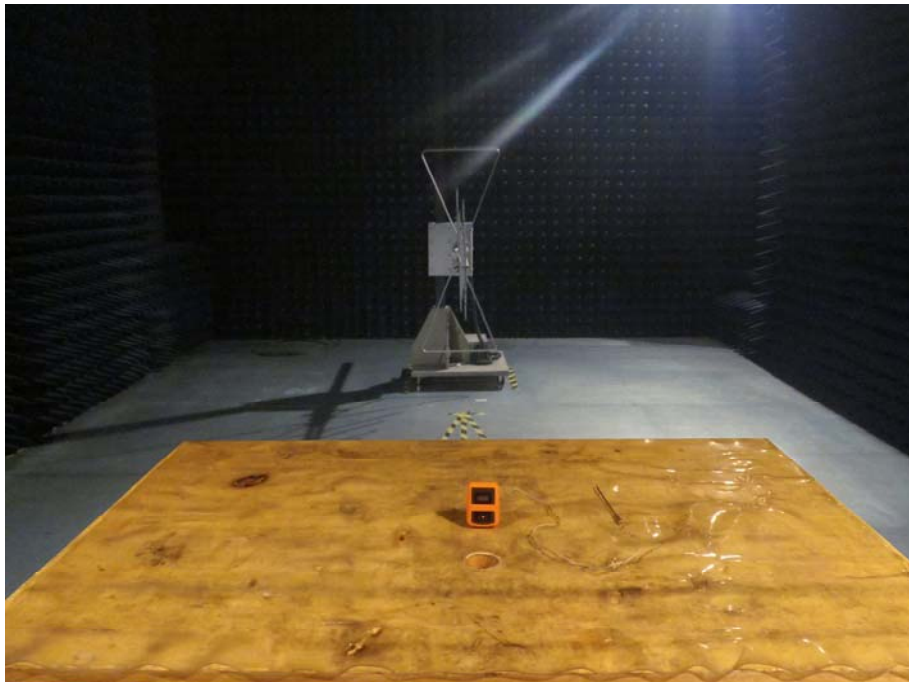
## 11 Photographs of Testing

### 11.1 Radiation Emission Test Setup Model IC6005(81-002)

Below 30MHz



From 30MHz to 1GHz





Above 1GHz



## 12 Photographs - Constructional Details

### 12.1 IC6005(81-002) - Appearance View















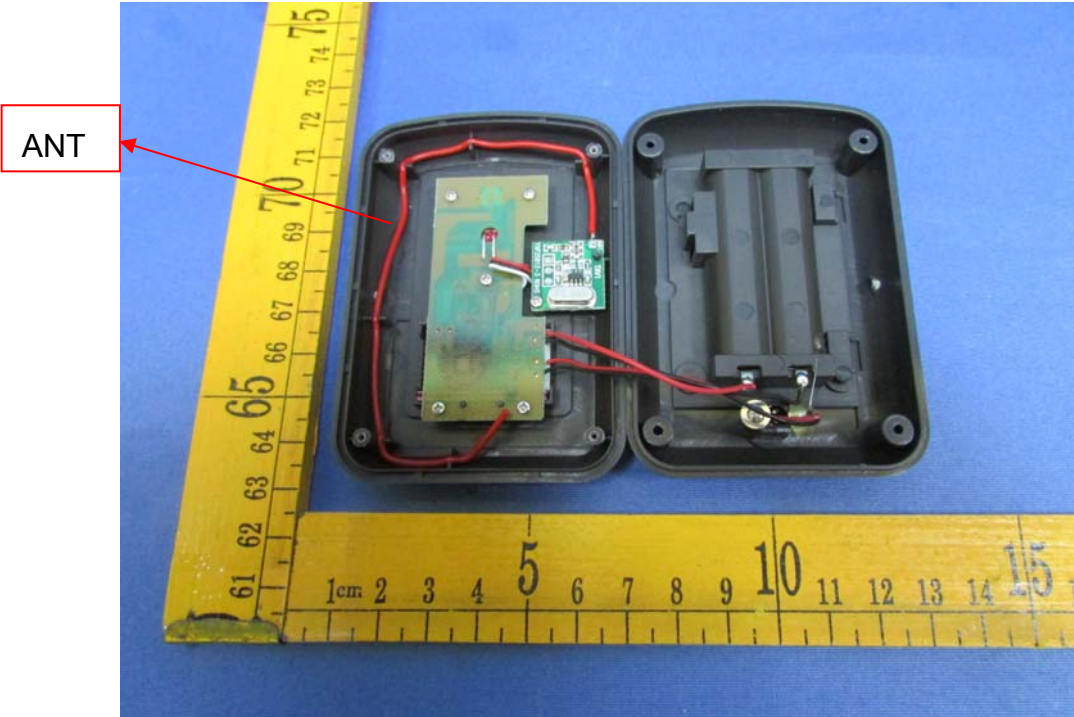




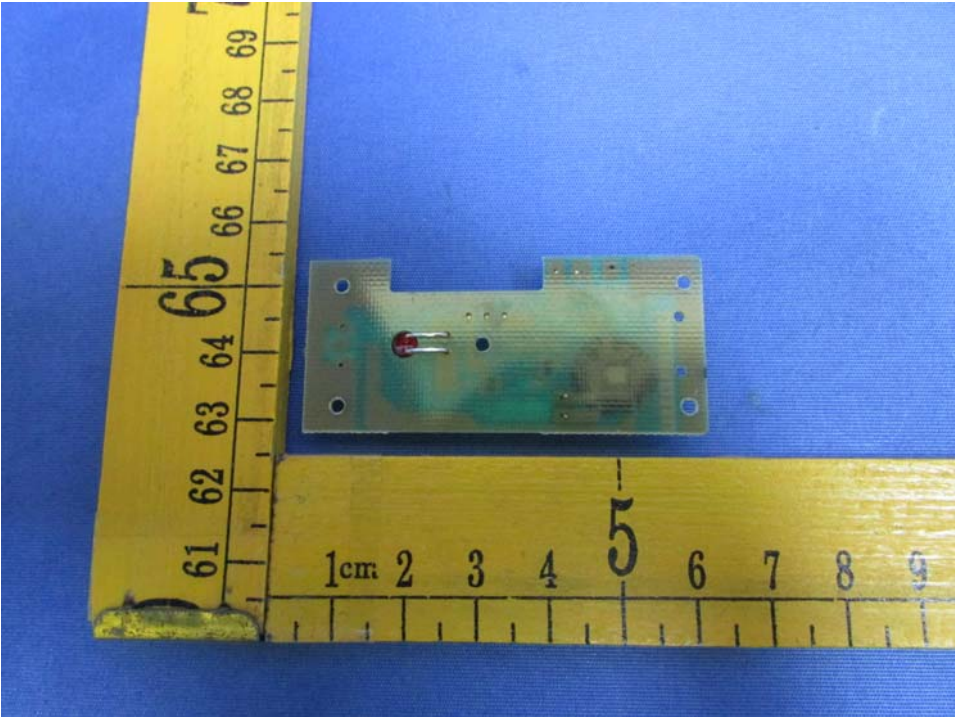
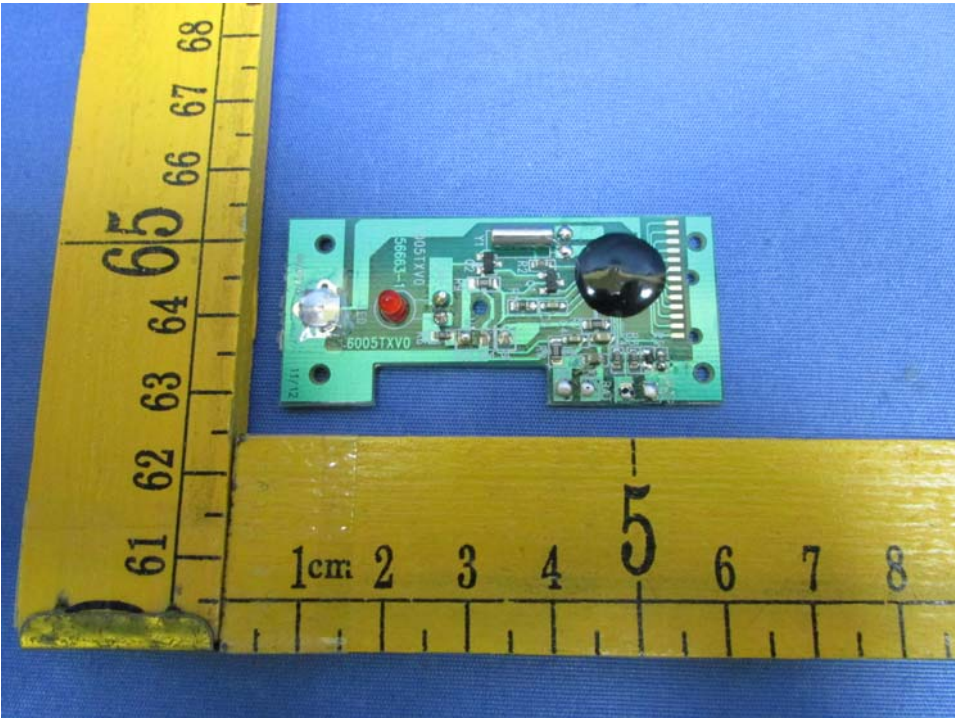


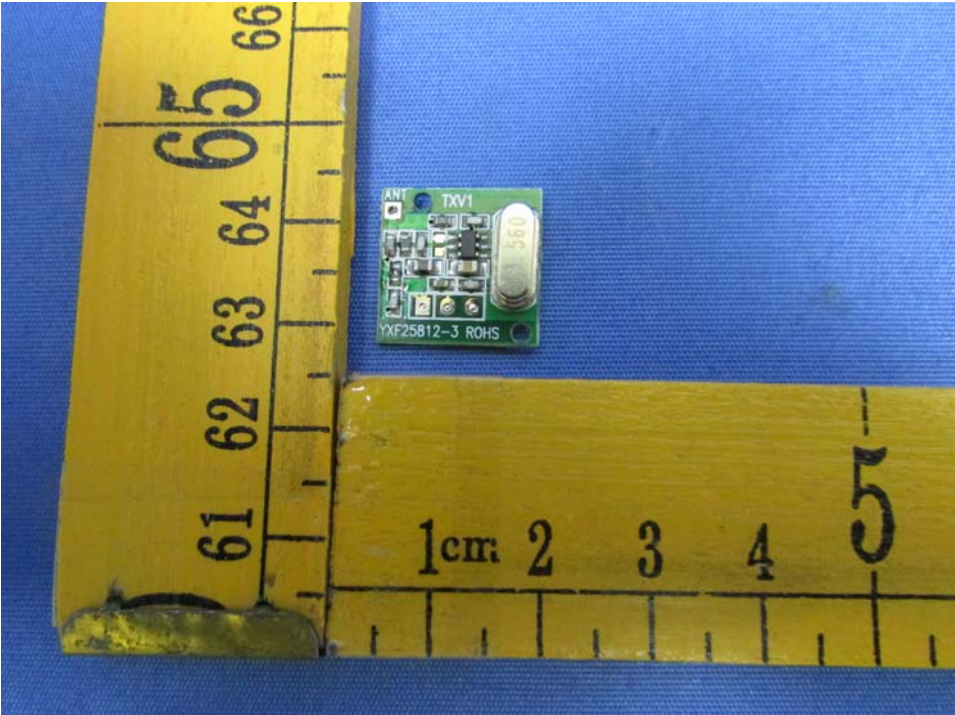
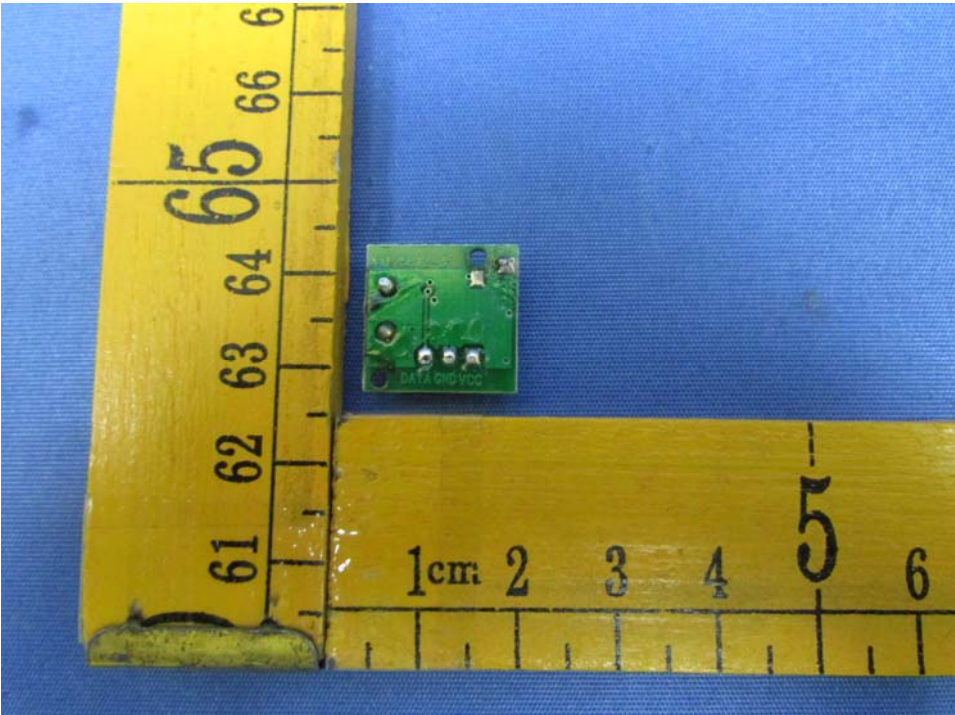


12.2 IC6005(81-002) - Internal View









====End of Report====