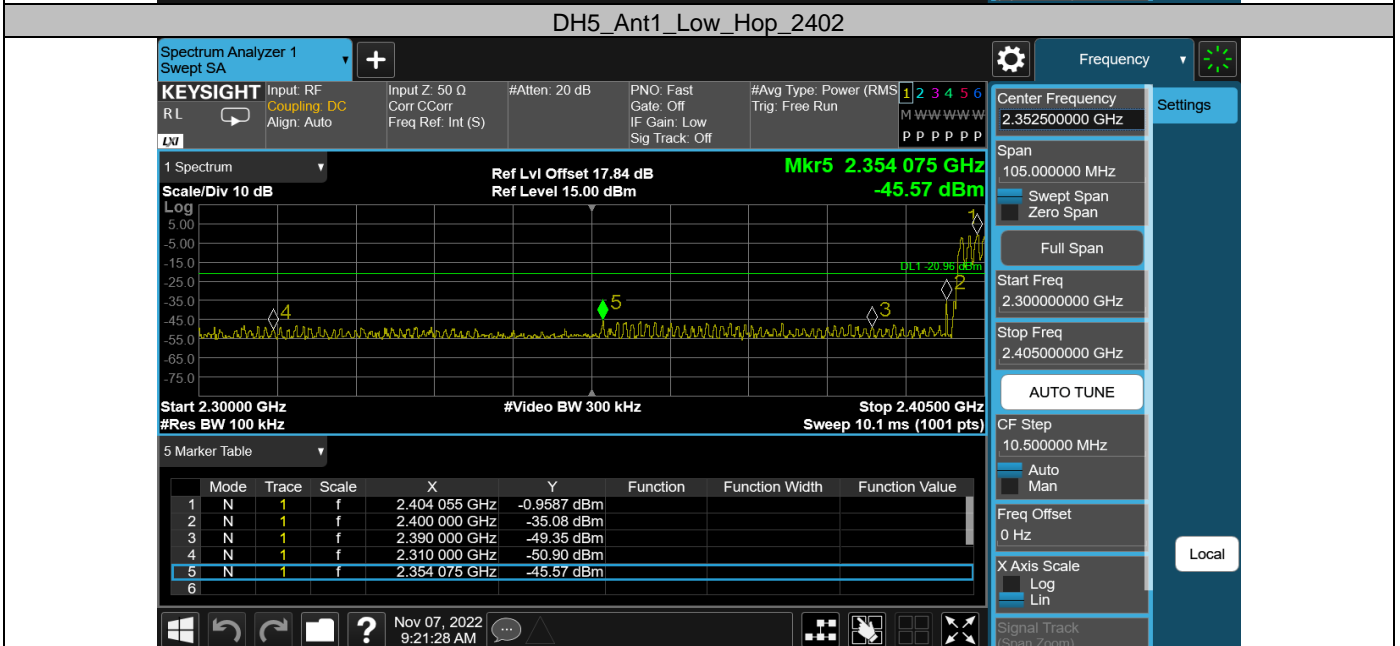
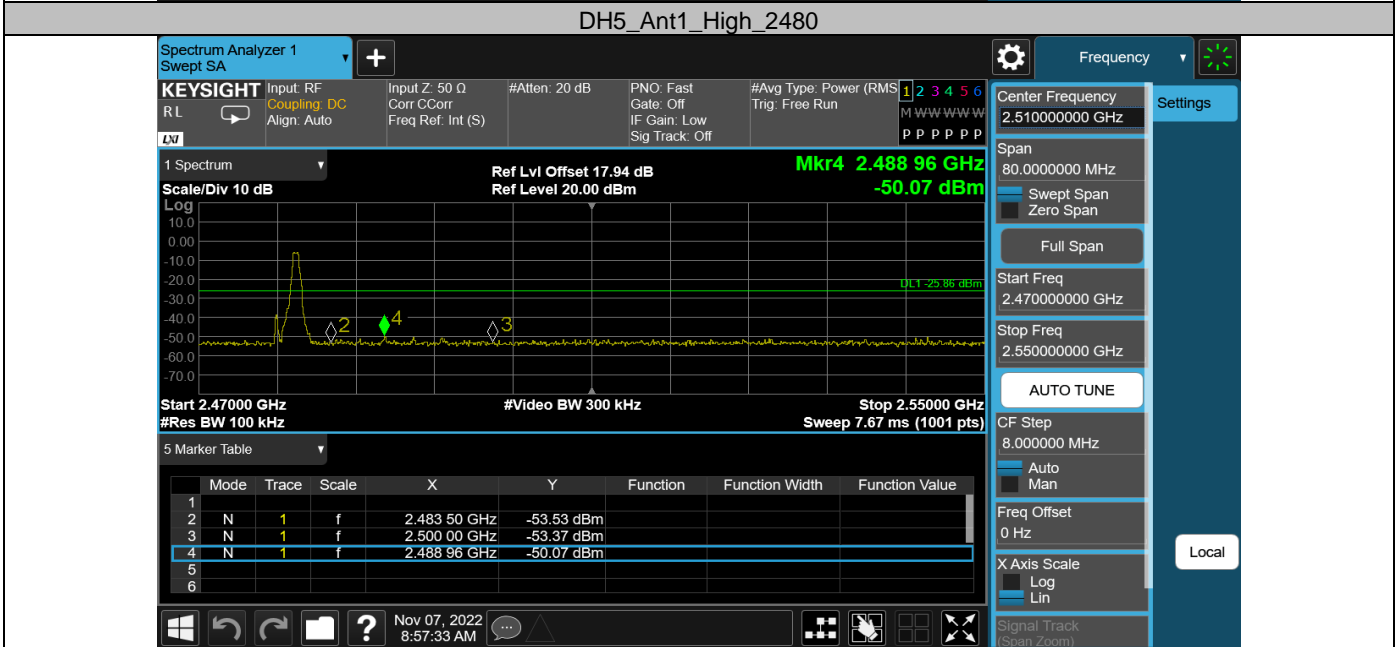
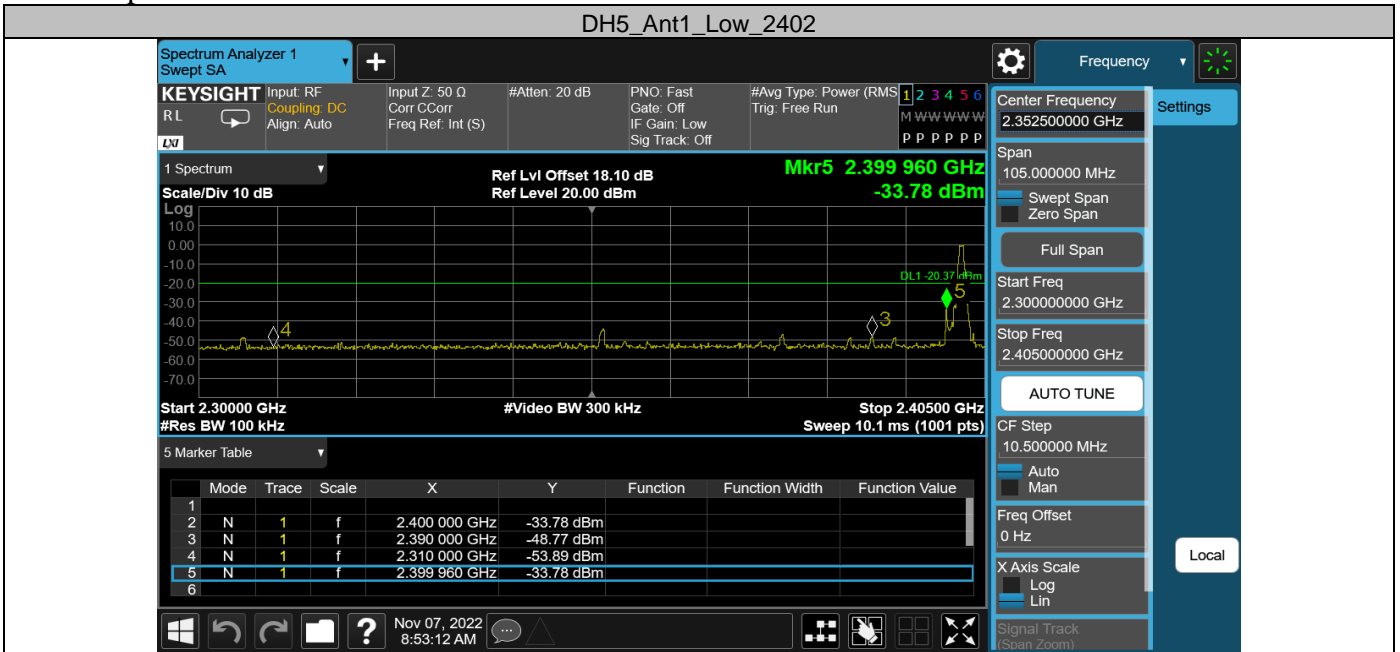
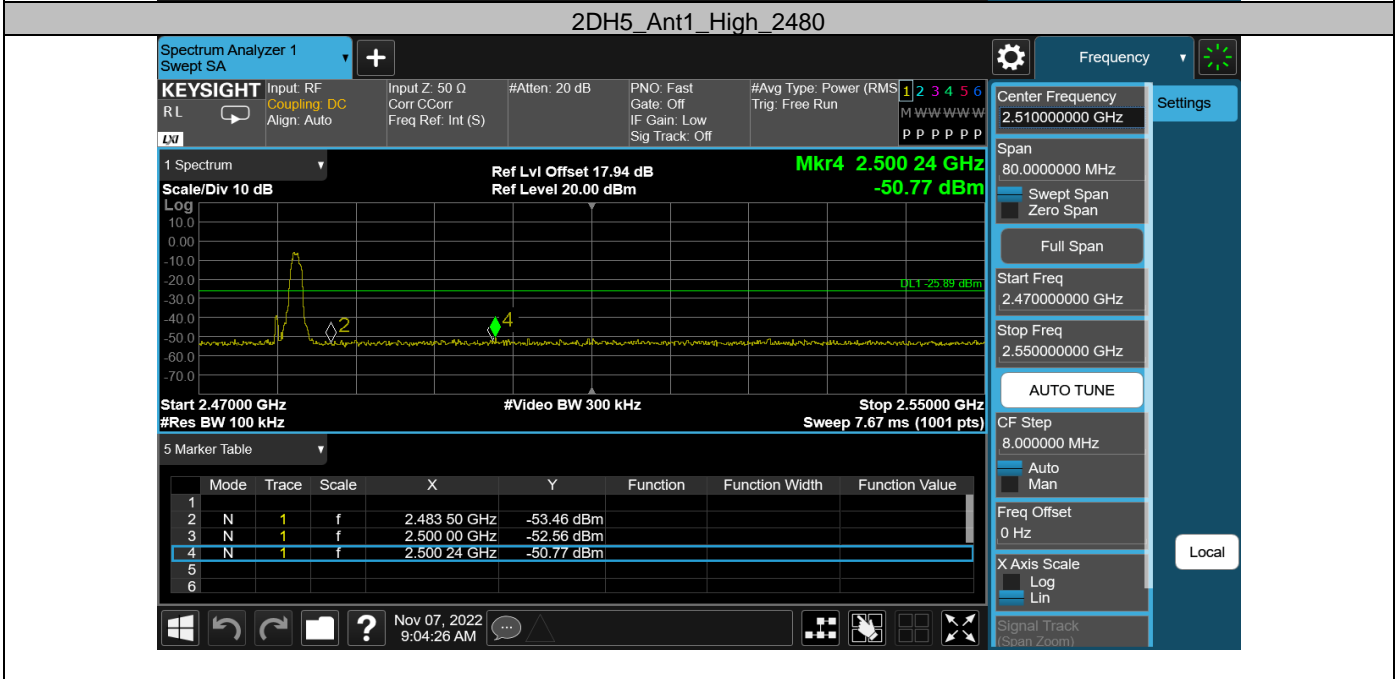
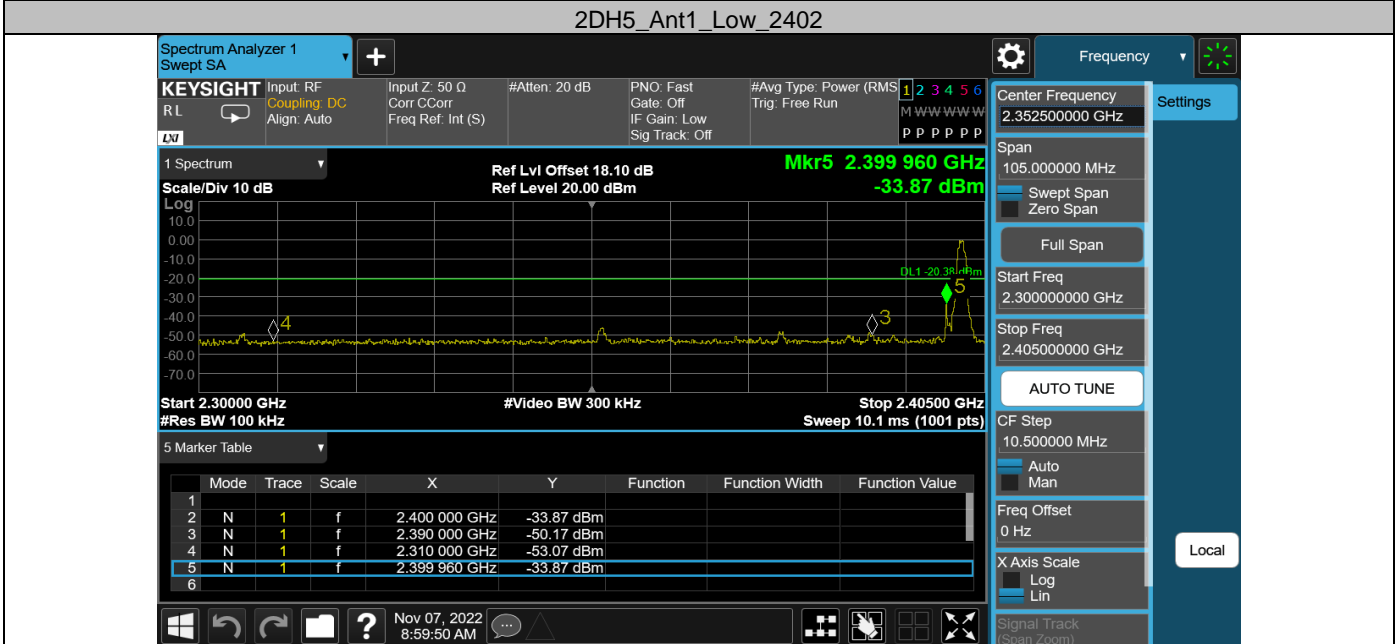
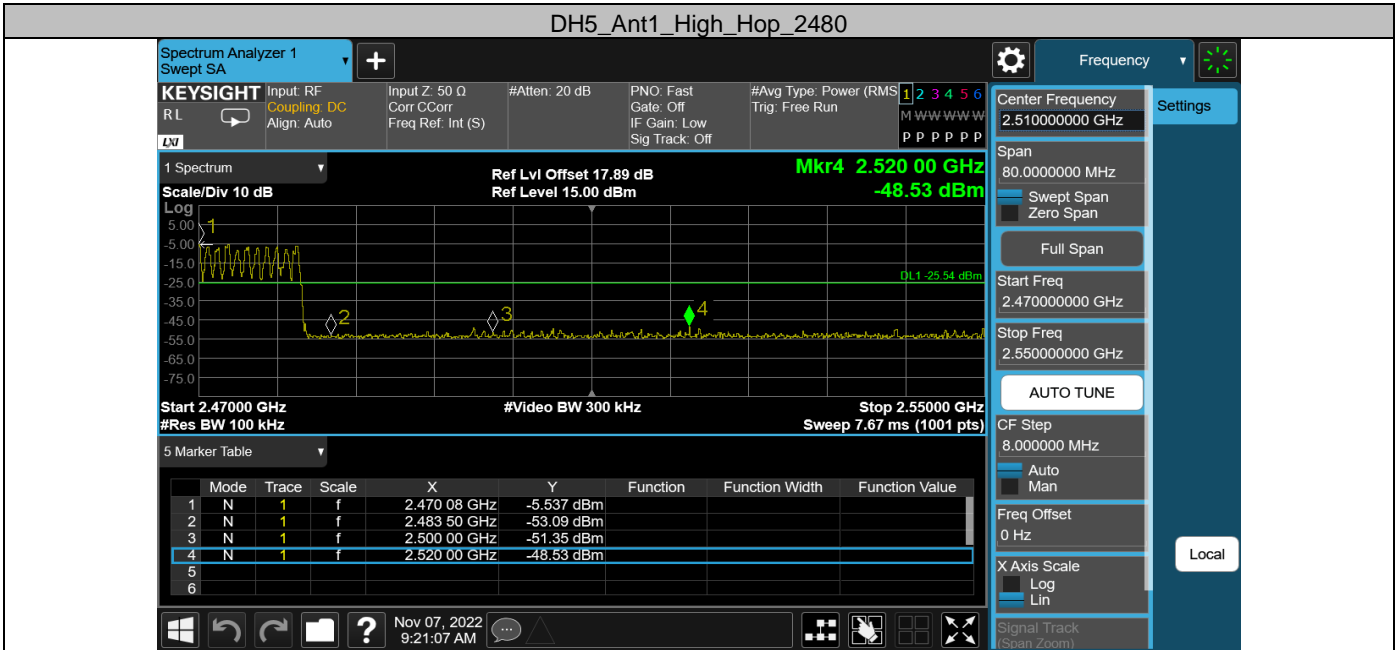
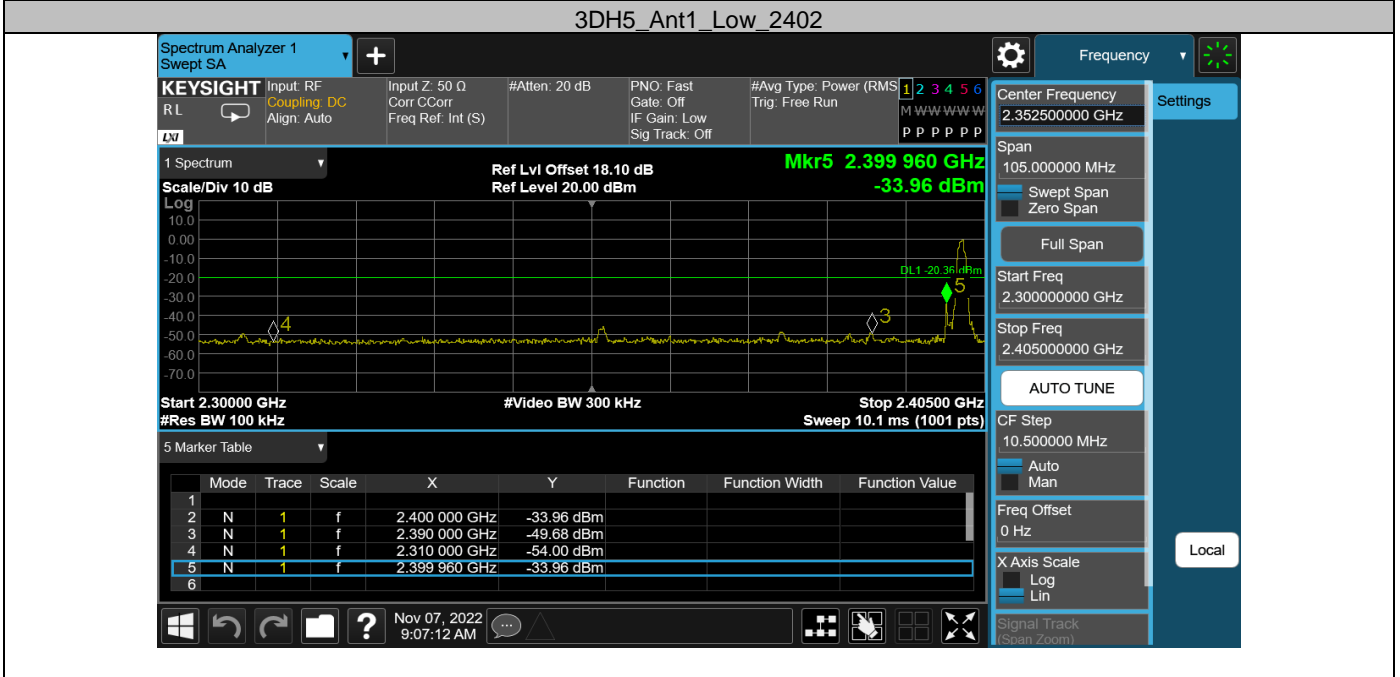
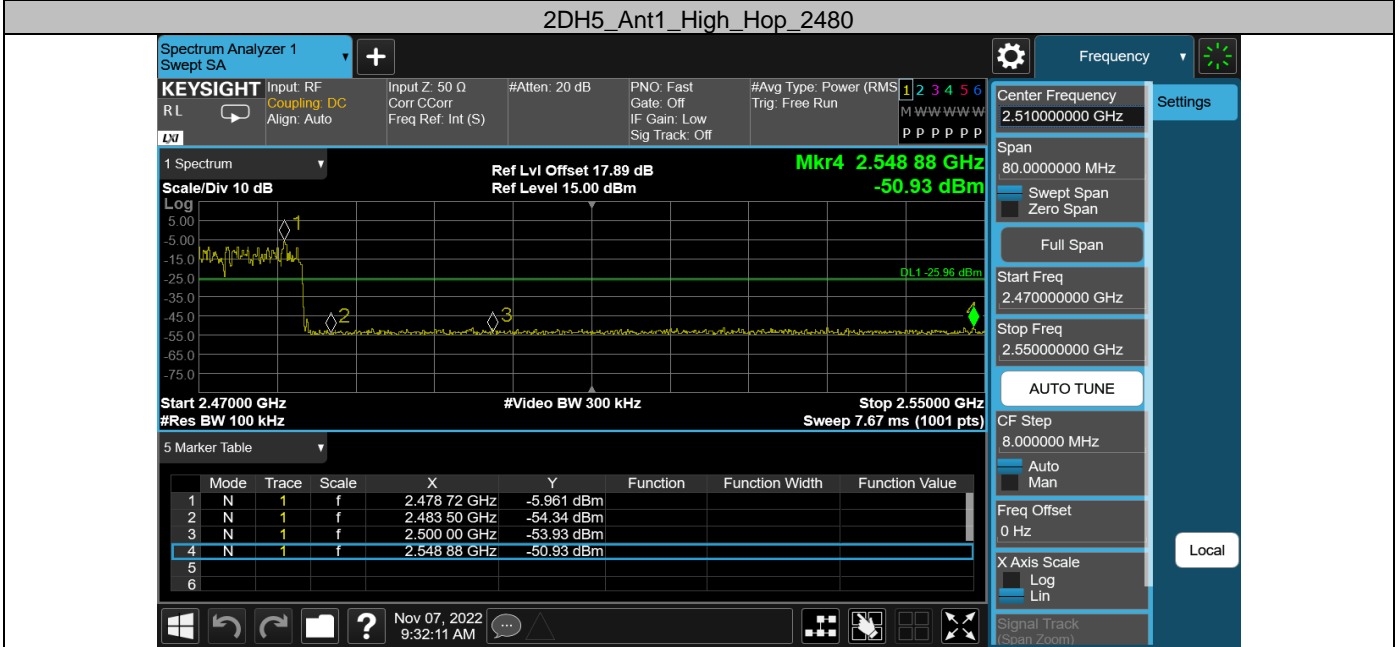
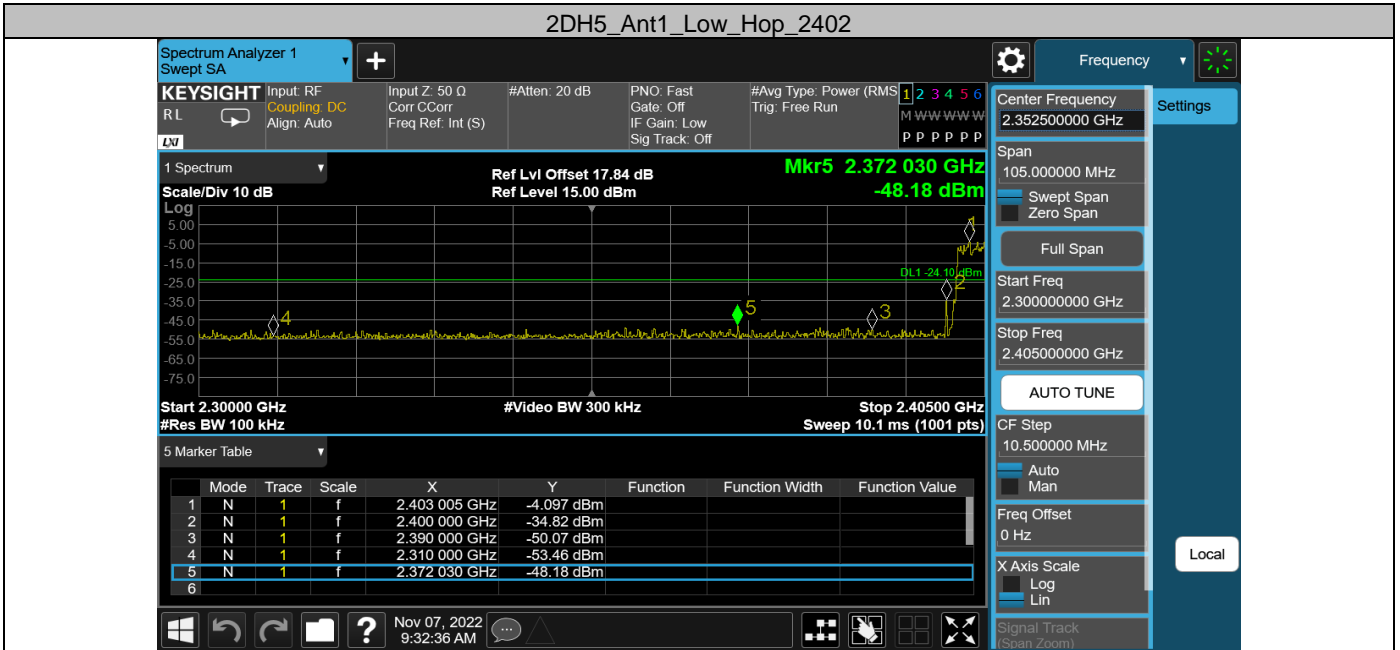
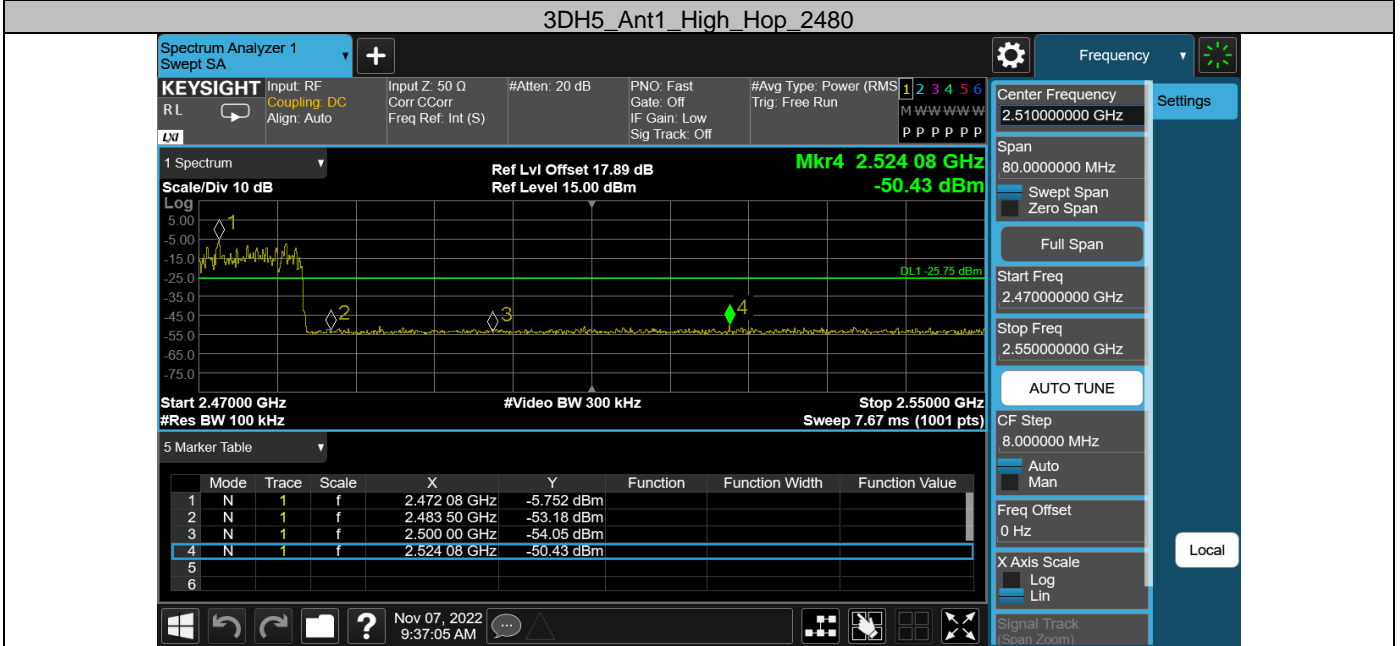
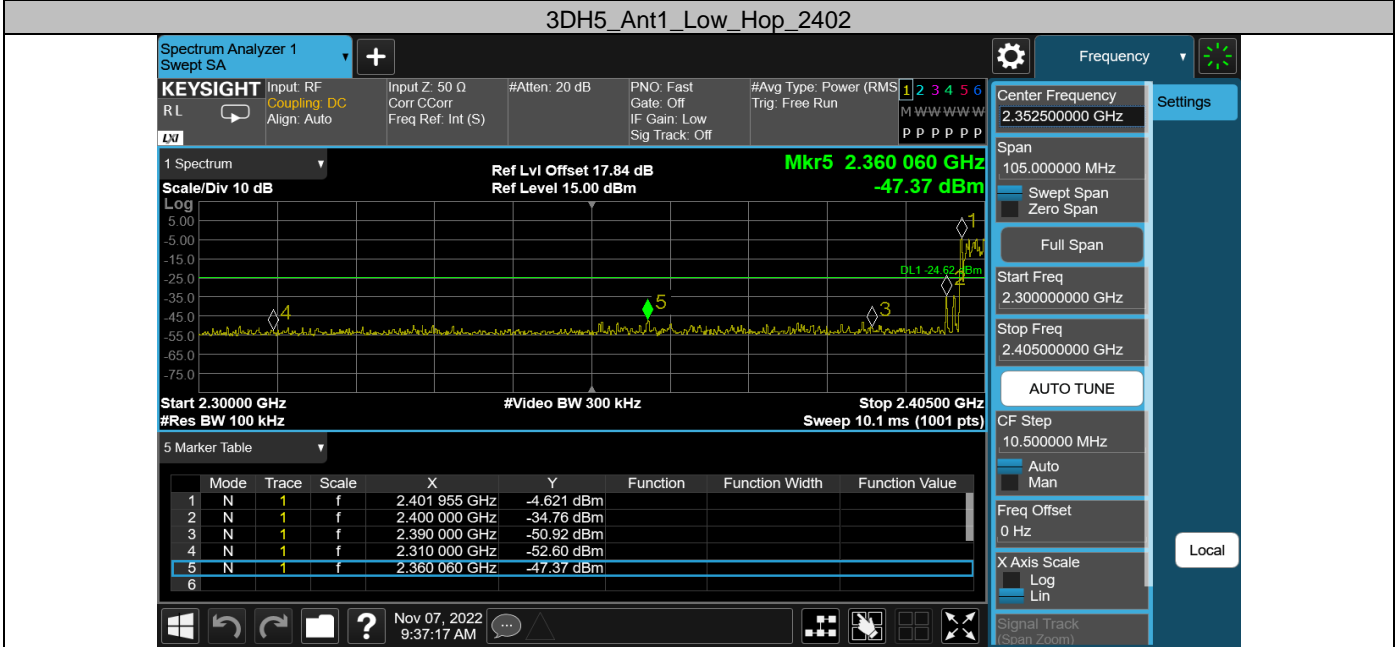
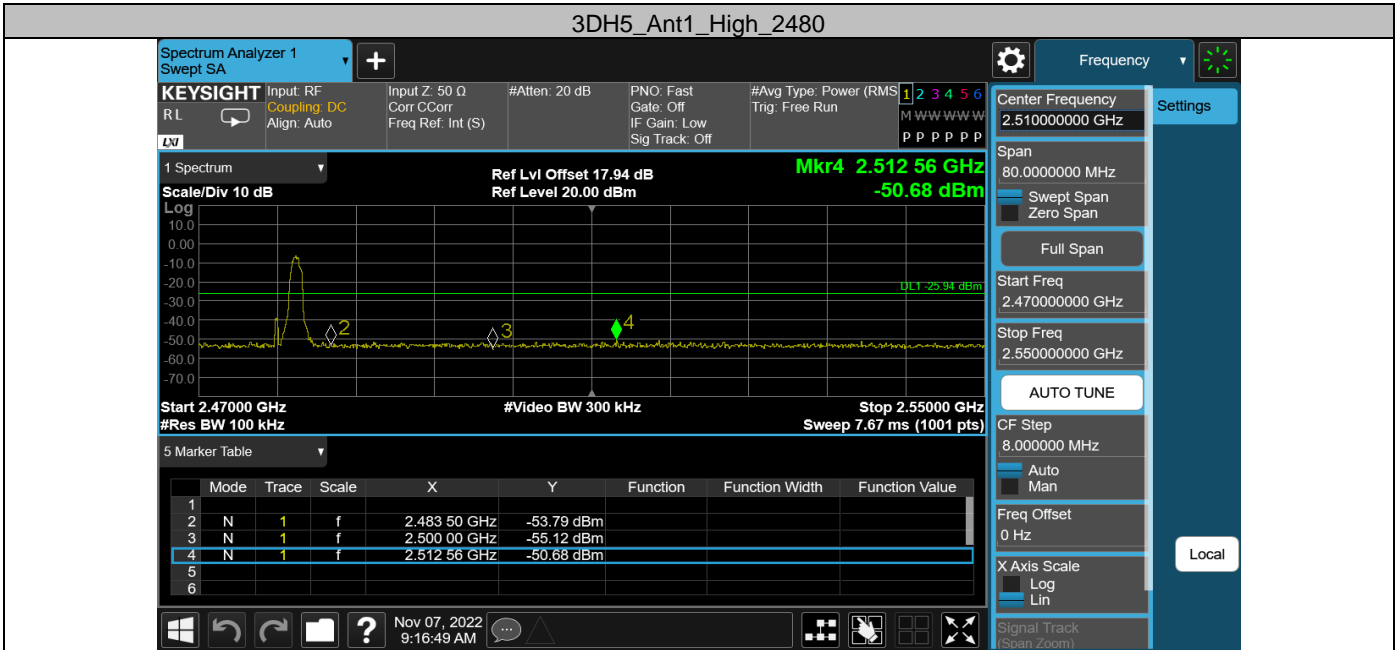


Test Graphs





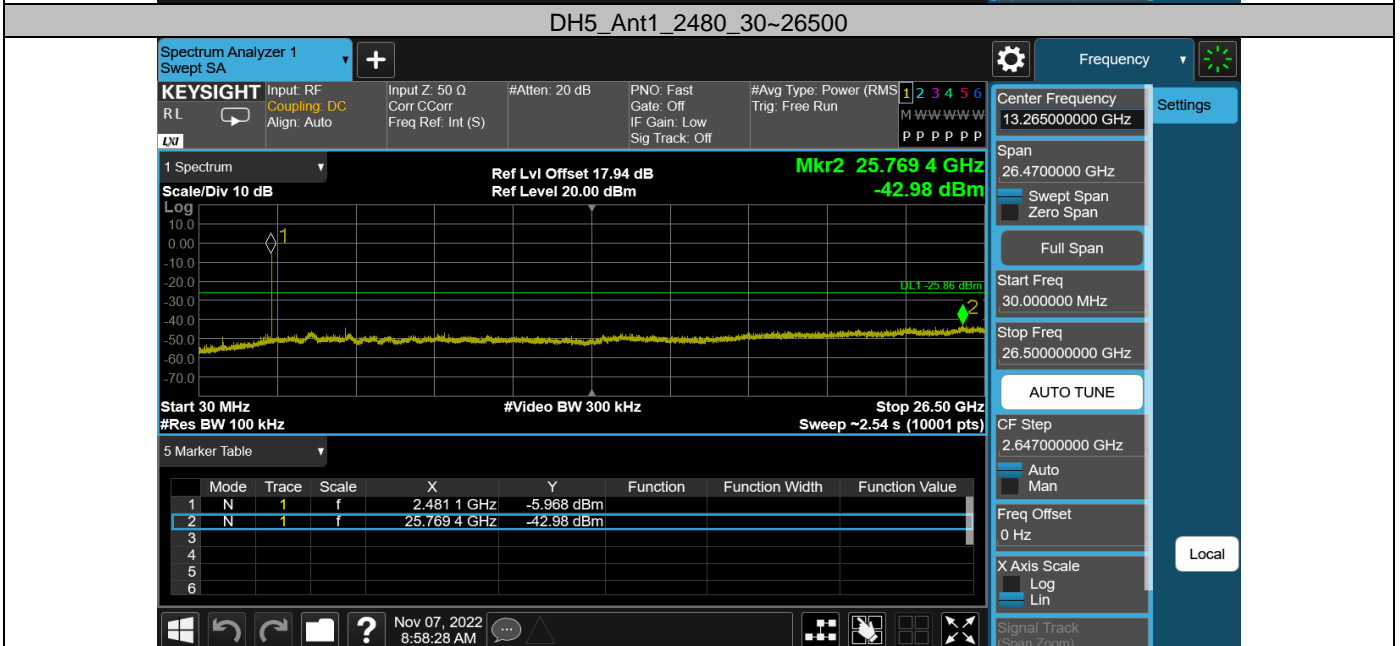
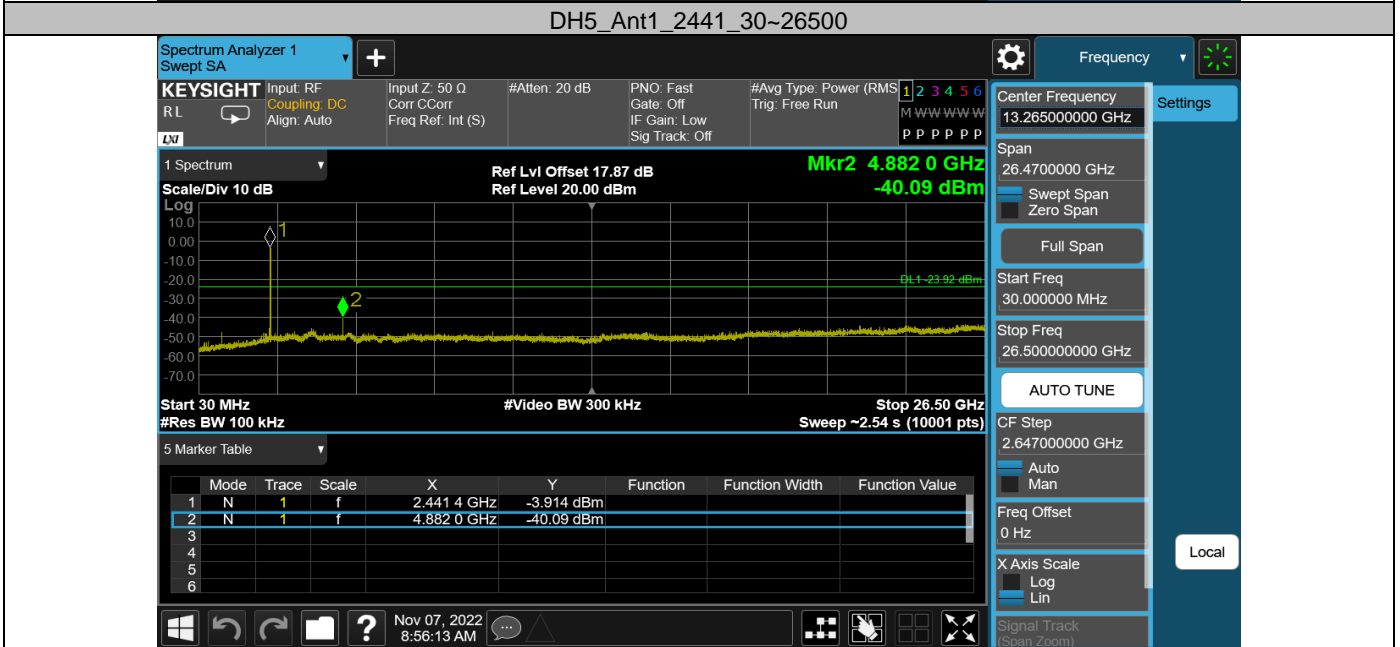
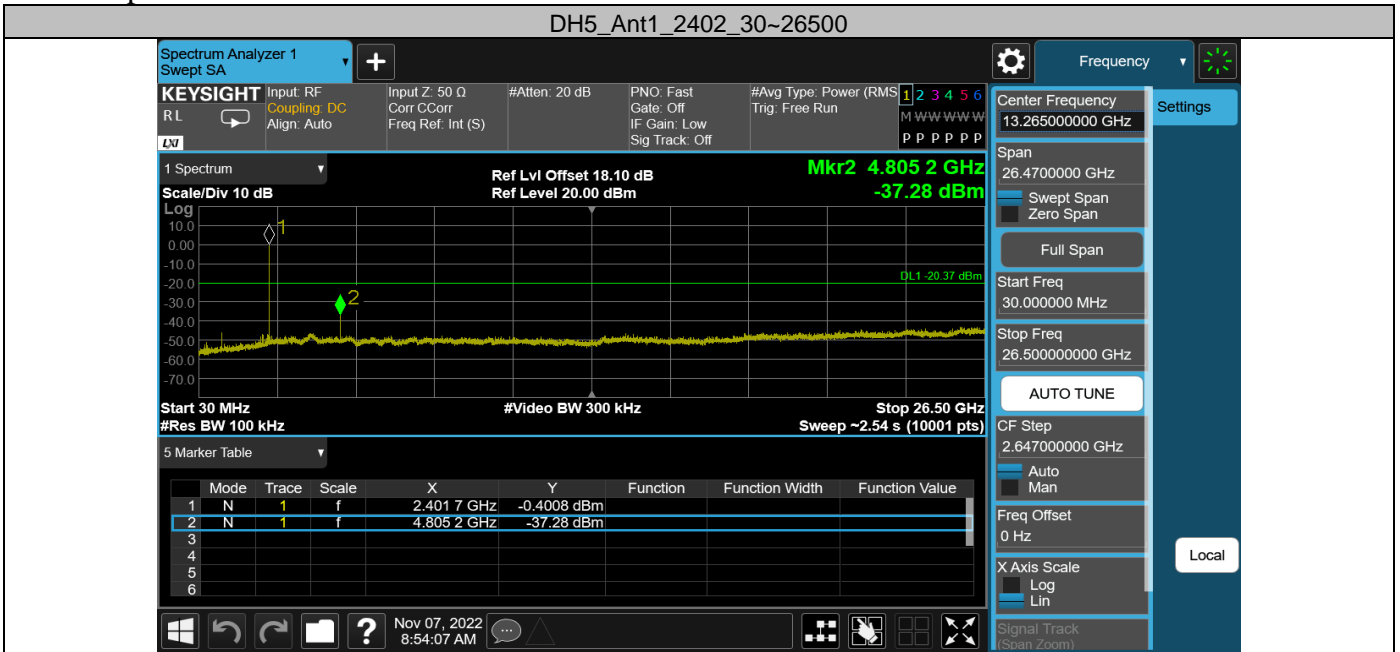


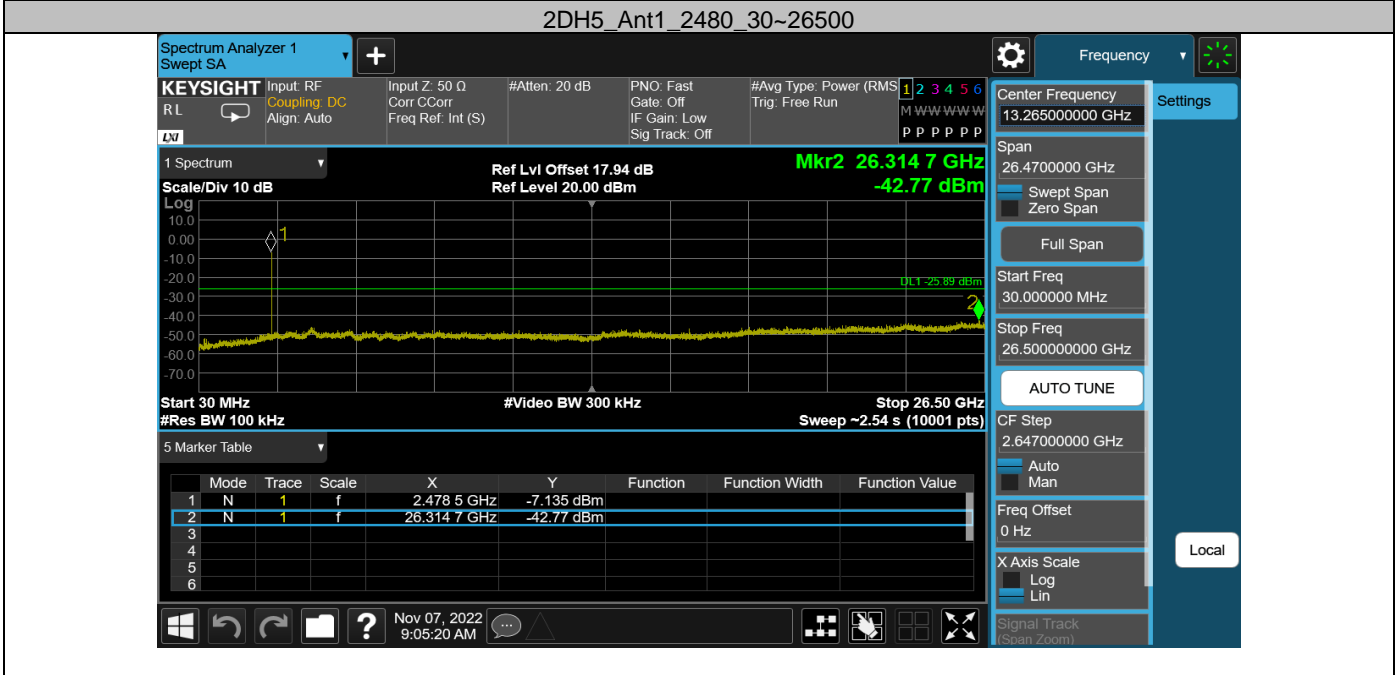
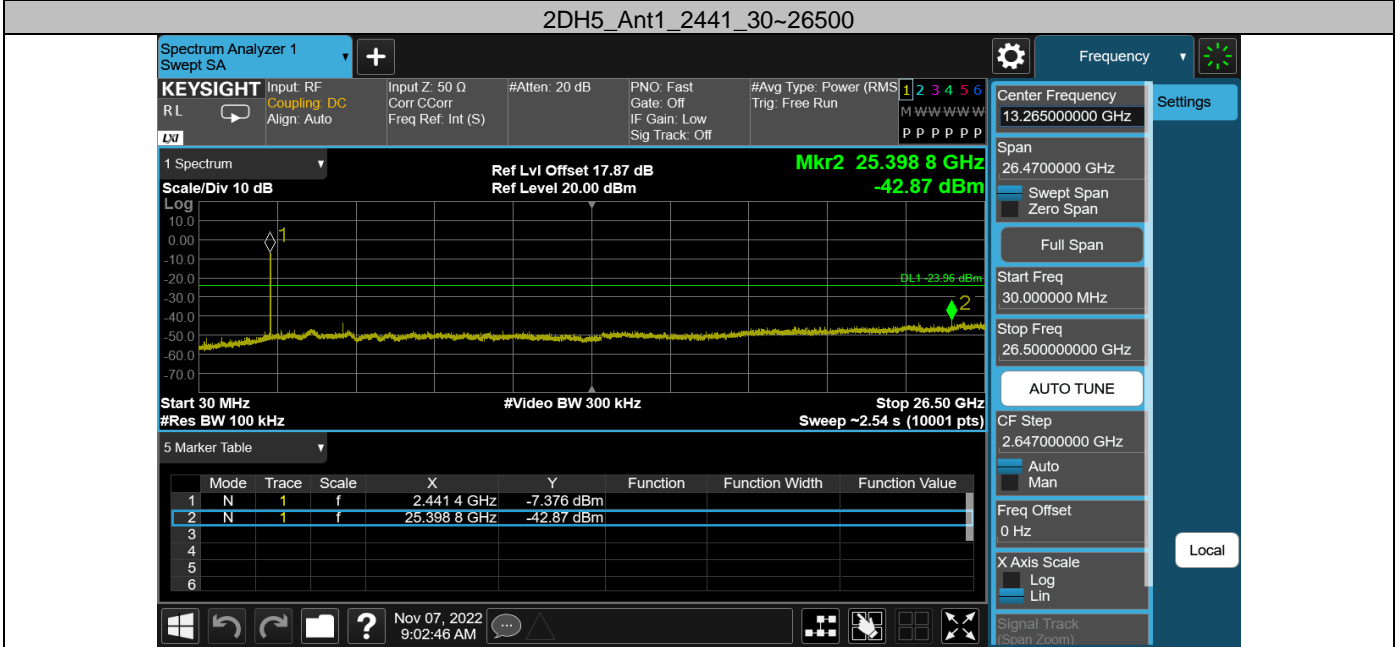
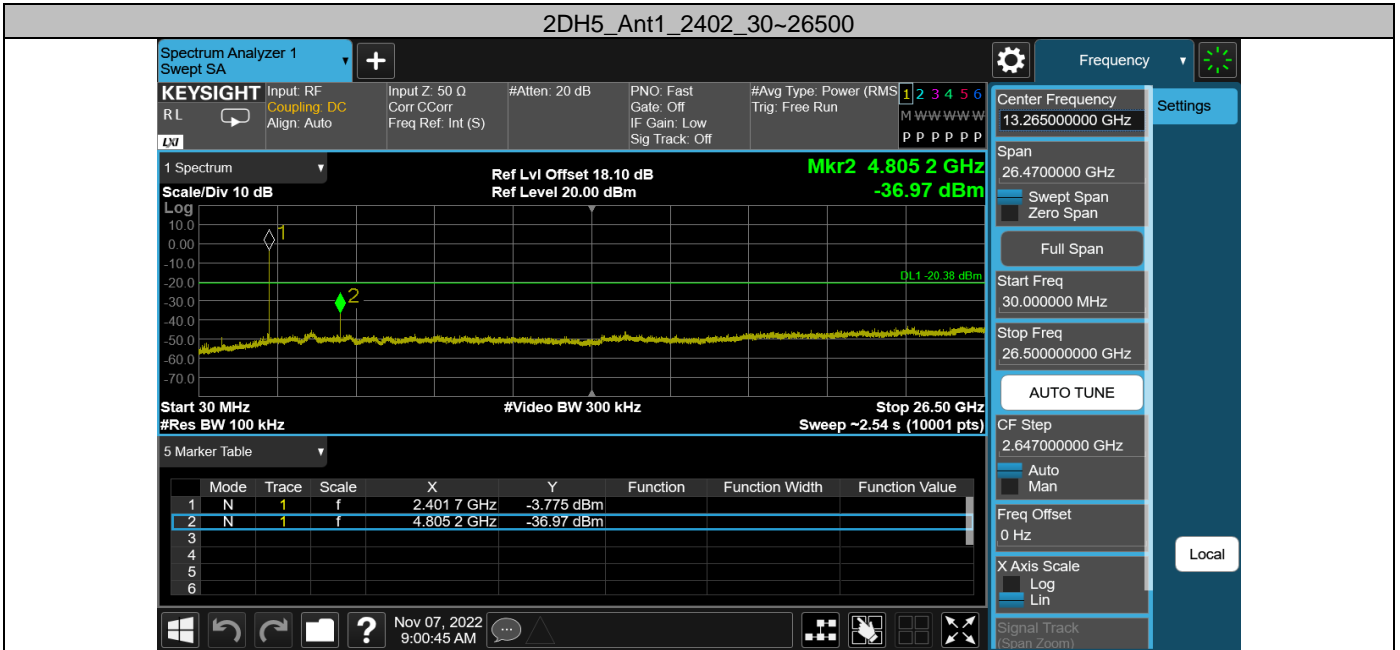


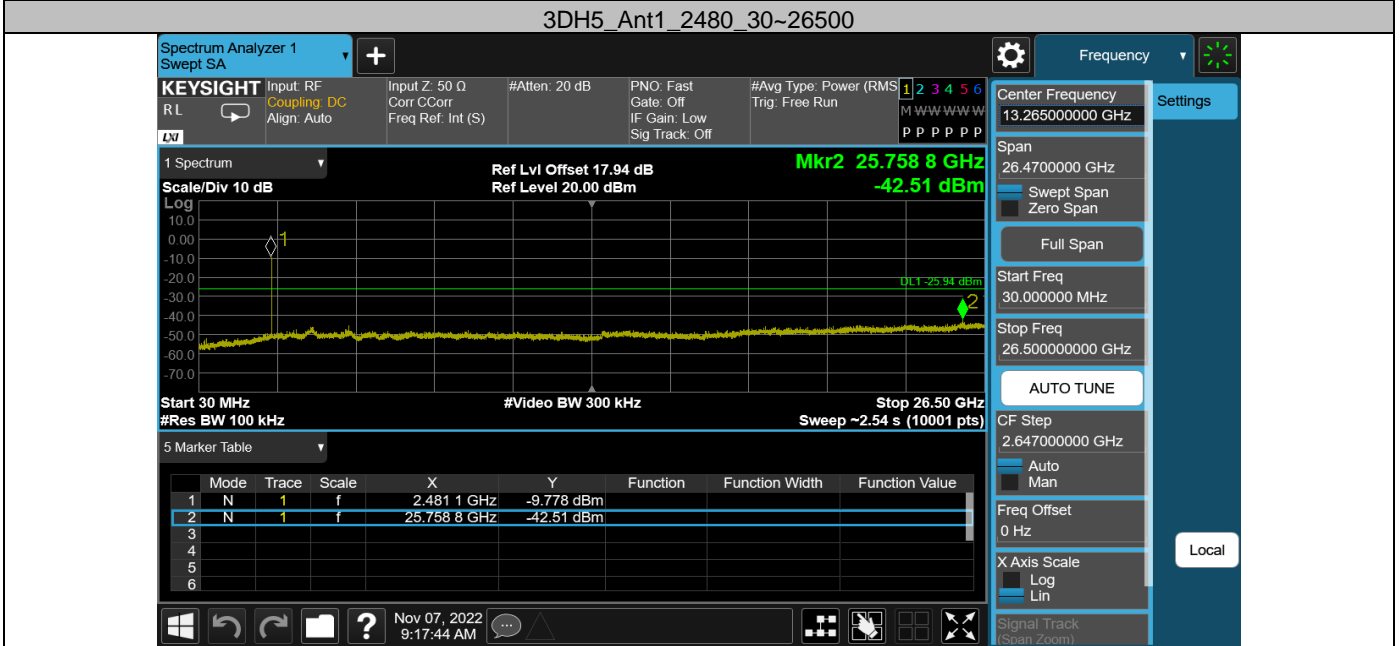
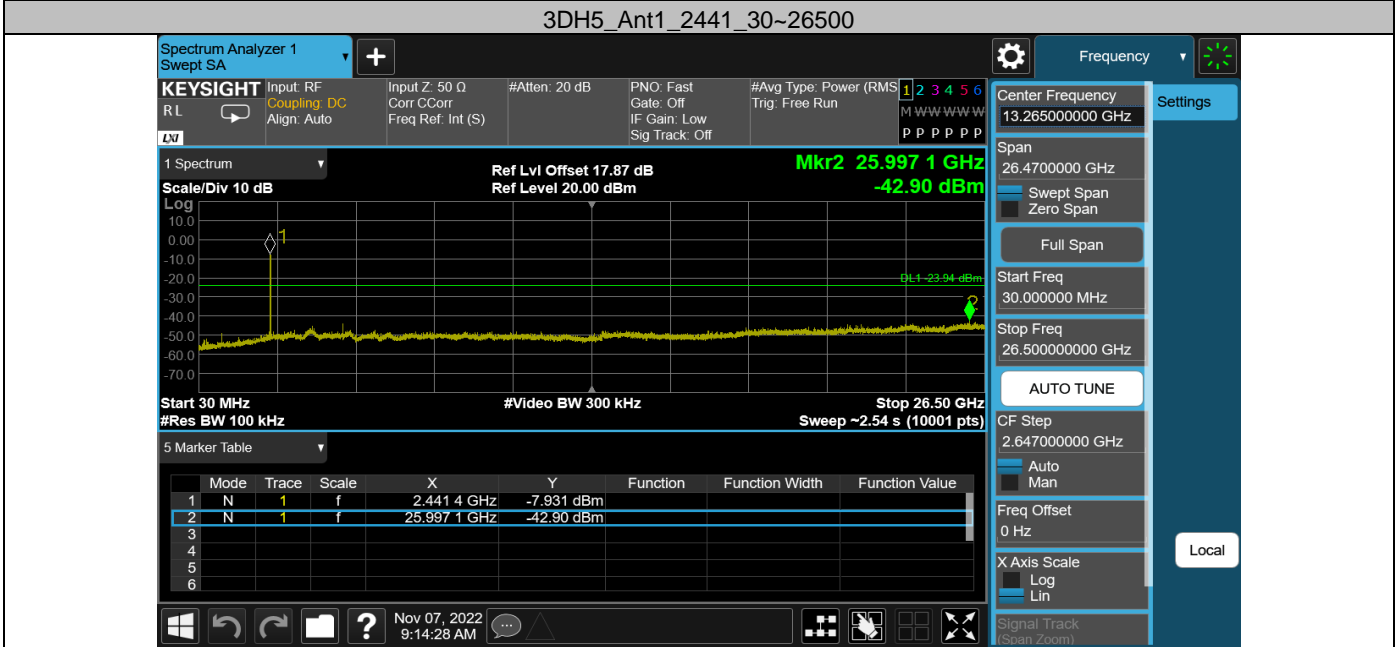
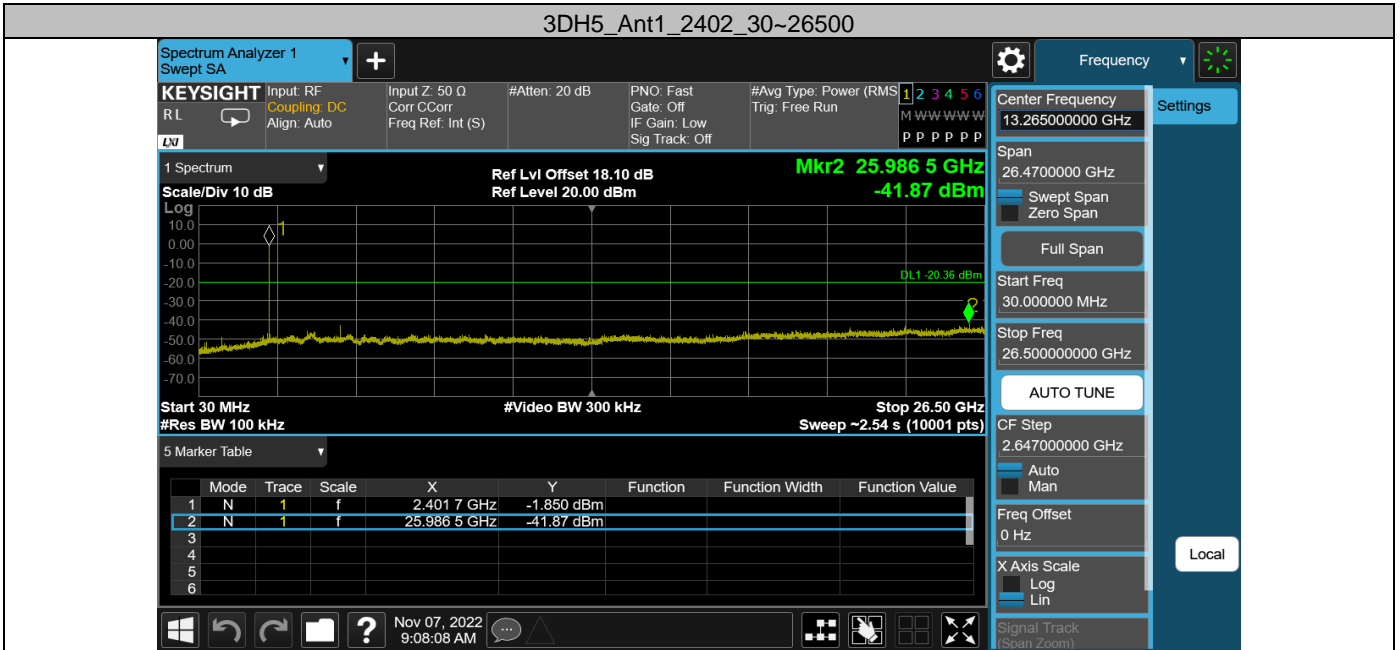
Appendix H: Conducted Spurious Emission
Test Result

Test Mode	Antenna	Freq(MHz)	Freq Range [MHz]	Ref Level [dBm]	Result [dBm]	Limit [dBm]	Verdict
DH5	Ant1	2402	30~26500	-0.37	-37.28	≤-20.37	PASS
		2441	30~26500	-3.92	-40.09	≤-23.92	PASS
		2480	30~26500	-5.86	-42.98	≤-25.86	PASS
2DH5	Ant1	2402	30~26500	-0.38	-36.97	≤-20.38	PASS
		2441	30~26500	-3.96	-42.87	≤-23.96	PASS
		2480	30~26500	-5.89	-42.77	≤-25.89	PASS
3DH5	Ant1	2402	30~26500	-0.36	-41.87	≤-20.36	PASS
		2441	30~26500	-3.94	-42.9	≤-23.94	PASS
		2480	30~26500	-5.94	-42.52	≤-25.94	PASS

Test Graphs

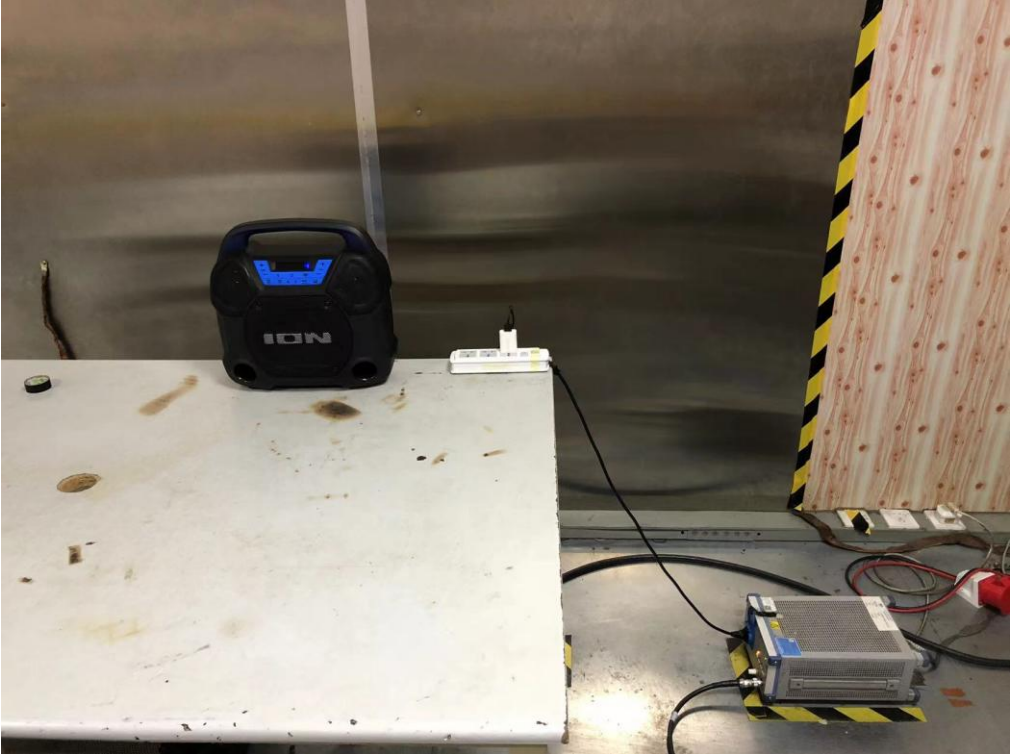




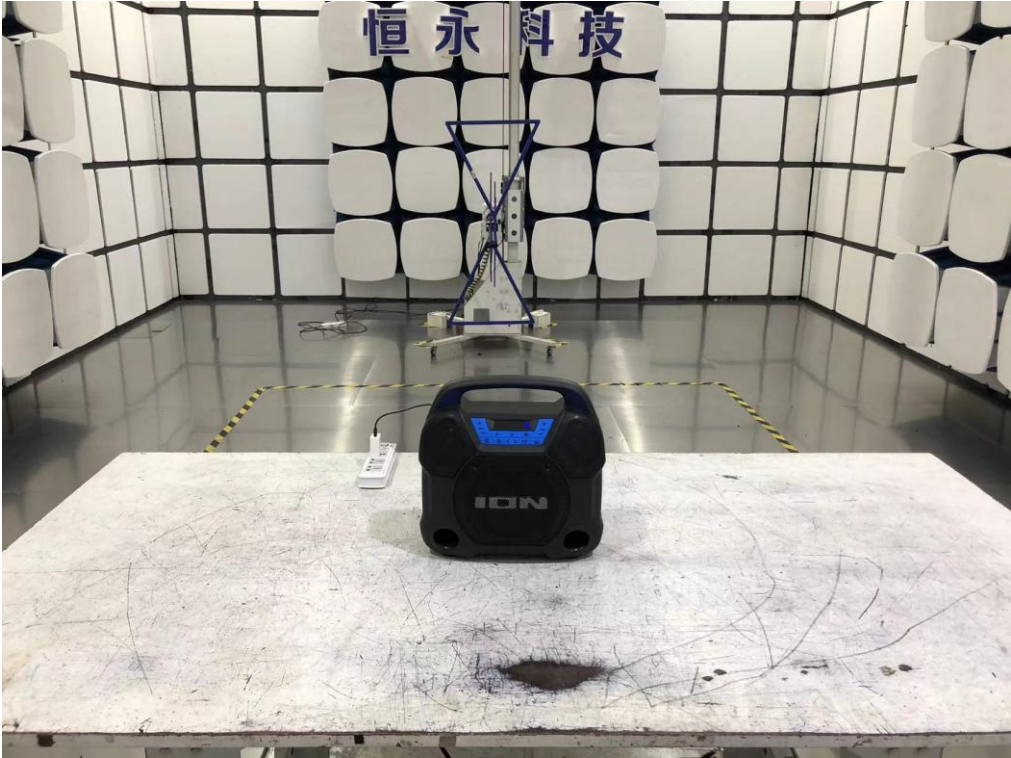


14. TEST SETUP PHOTO

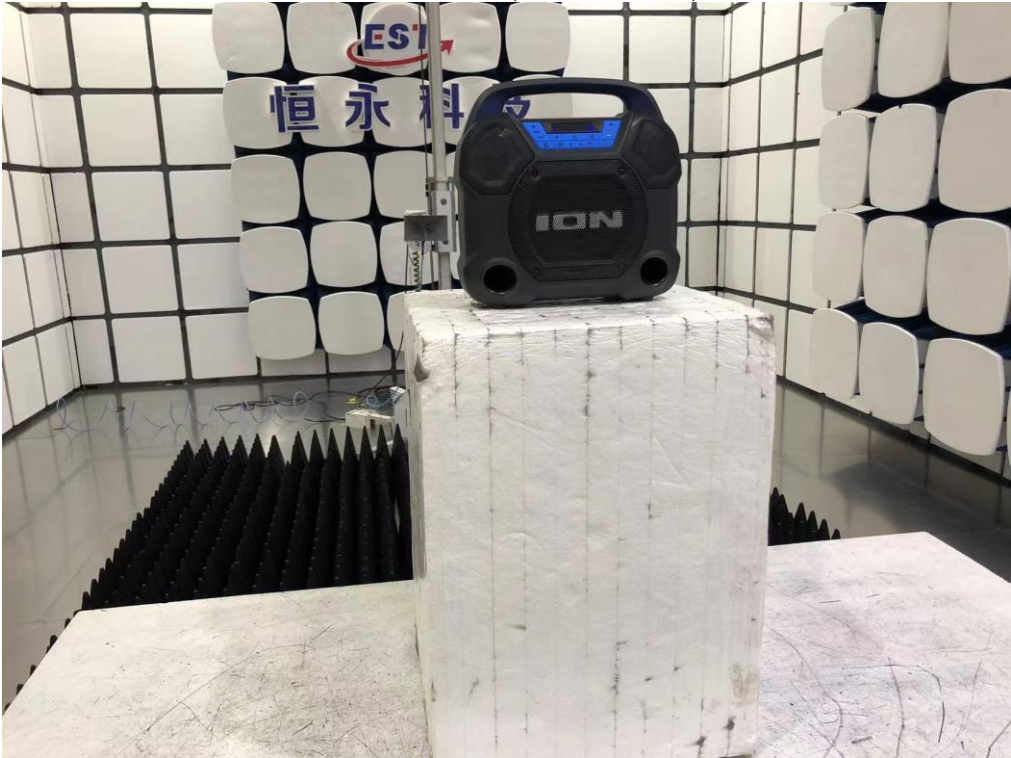
Conducted Test



Radiated Test (Below 1GHz)



Radiated Test (Above 1GHz)



15. EUT PHOTO

External Photos
M/N: EXPLORER™ EXPRESS



External Photos
M/N: EXPLORER™ EXPRESS



External Photos
M/N: EXPLORER™ EXPRESS



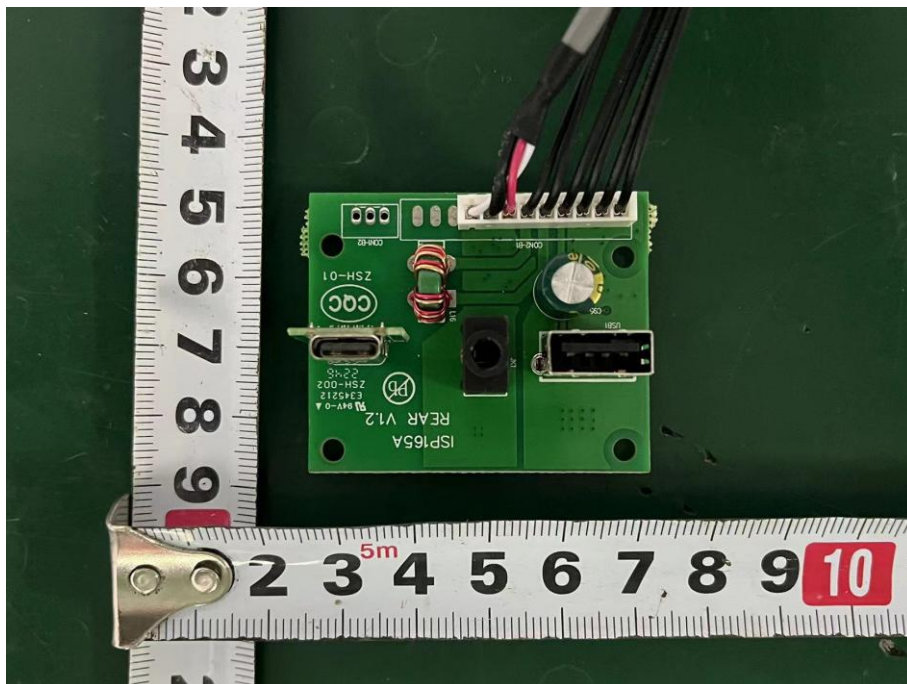
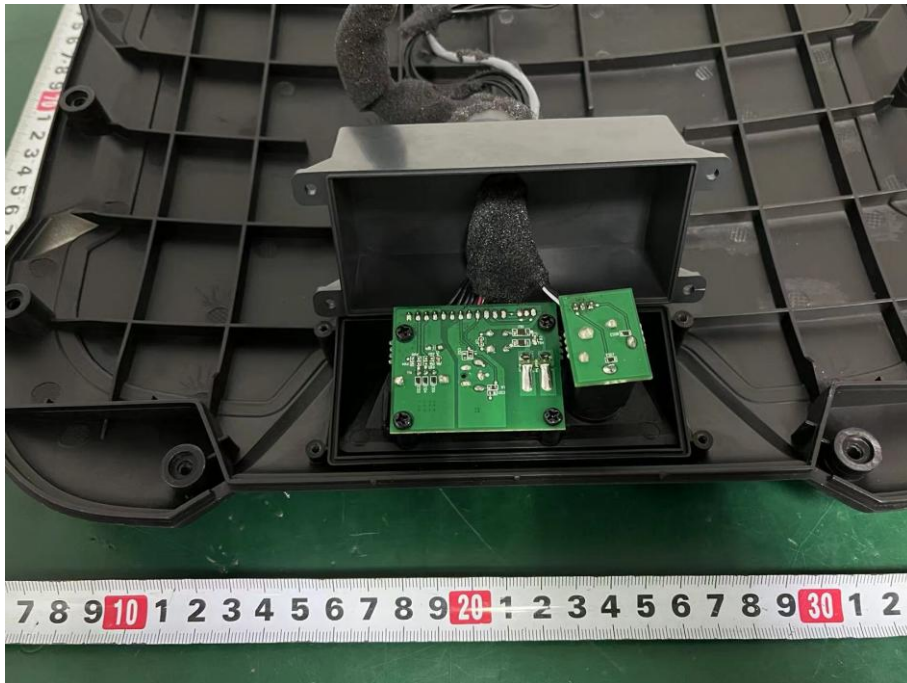
External Photos
M/N: EXPLORER™ EXPRESS



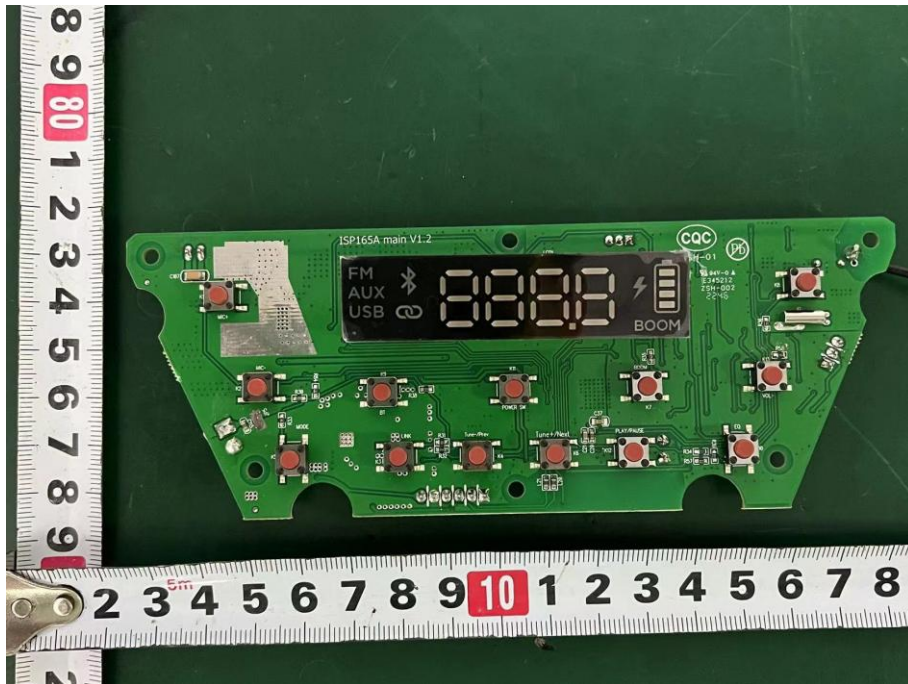
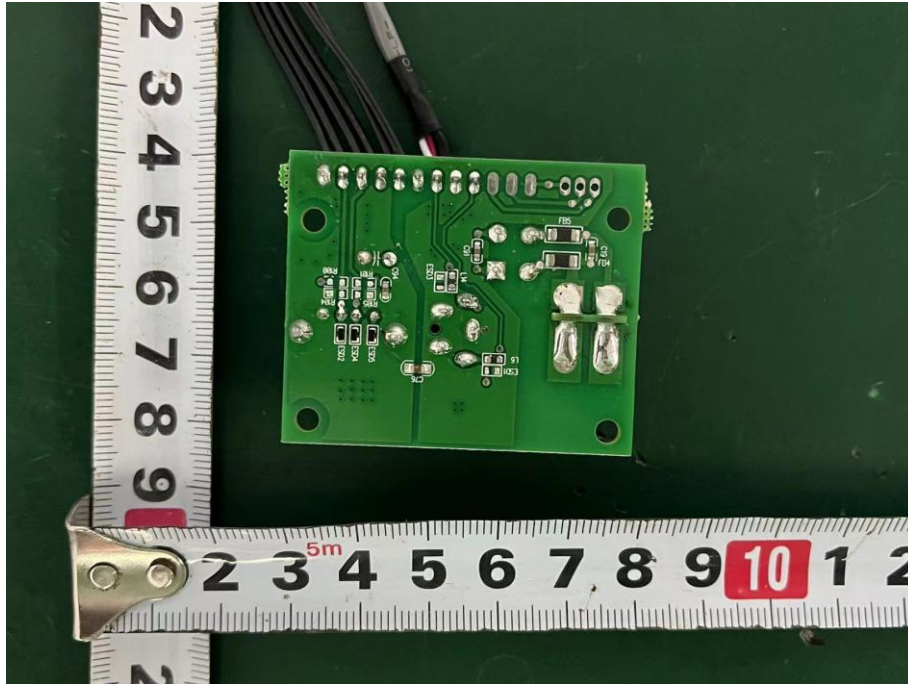
Internal Photos
M/N: EXPLORER™ EXPRESS



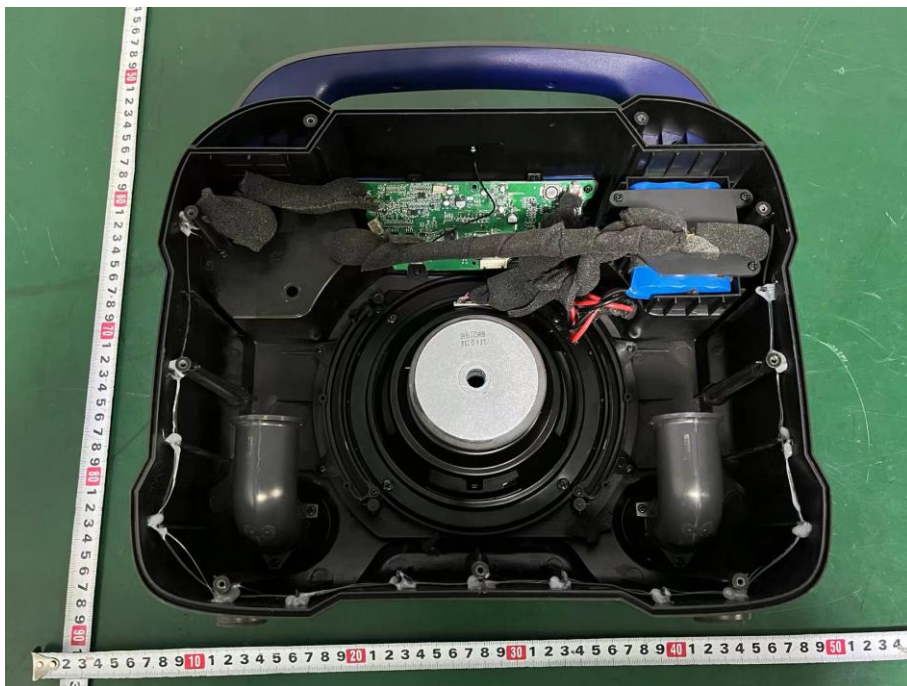
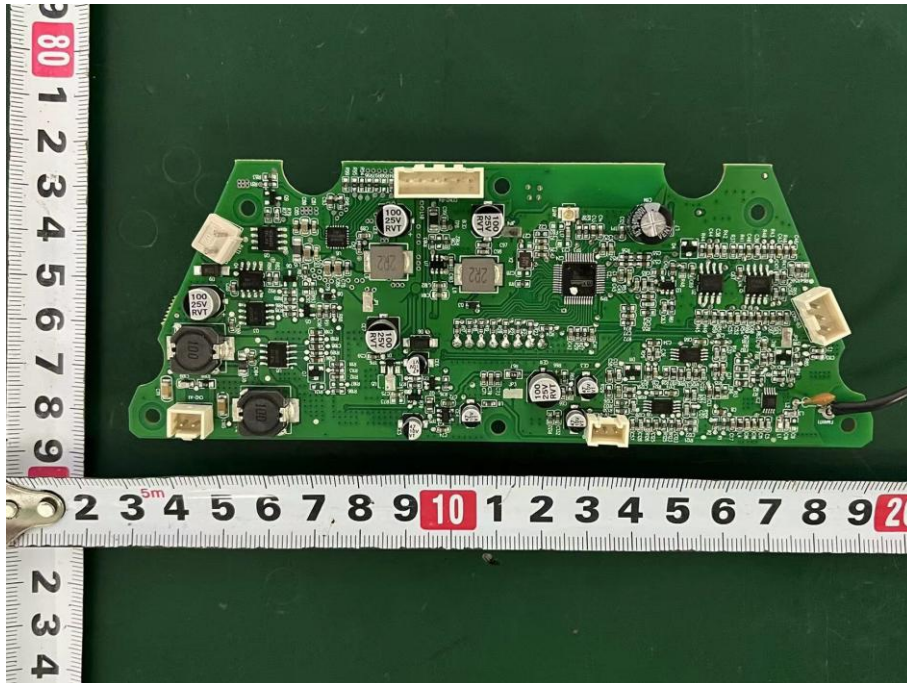
Internal Photos
M/N: EXPLORER™ EXPRESS



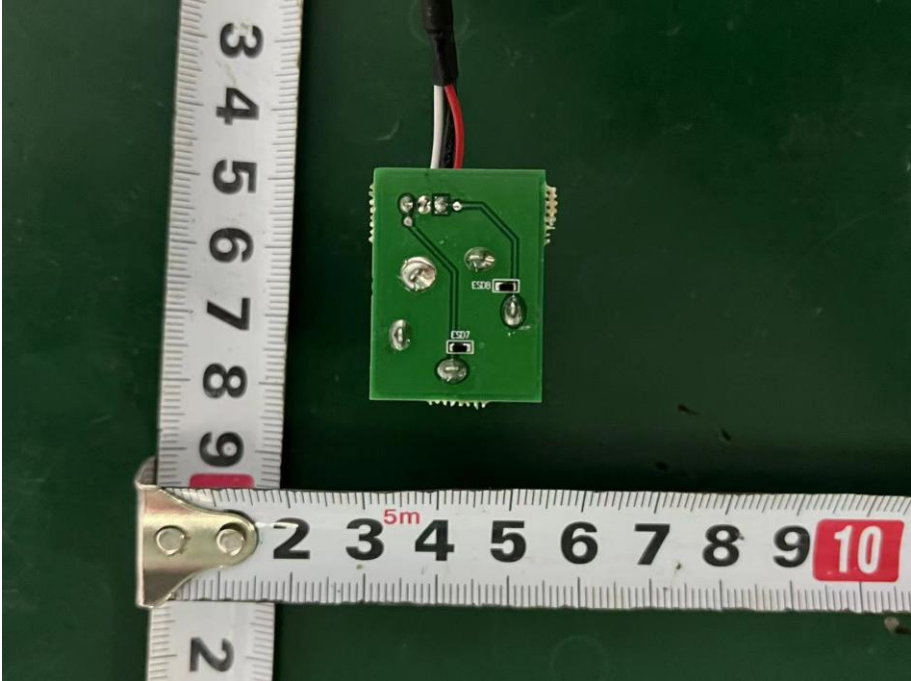
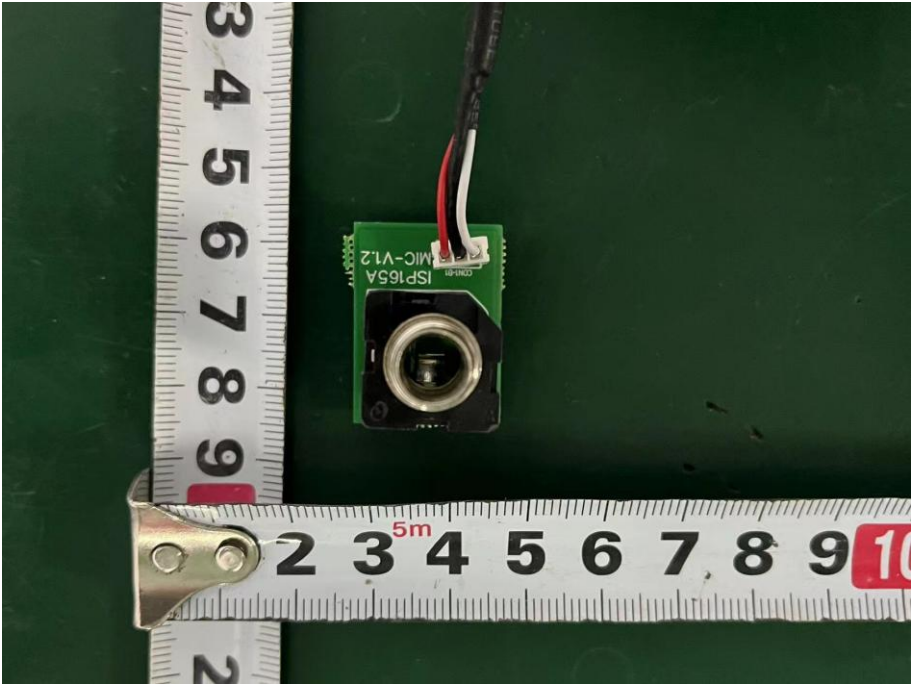
Internal Photos
M/N: EXPLORER™ EXPRESS



Internal Photos
M/N: EXPLORER™ EXPRESS

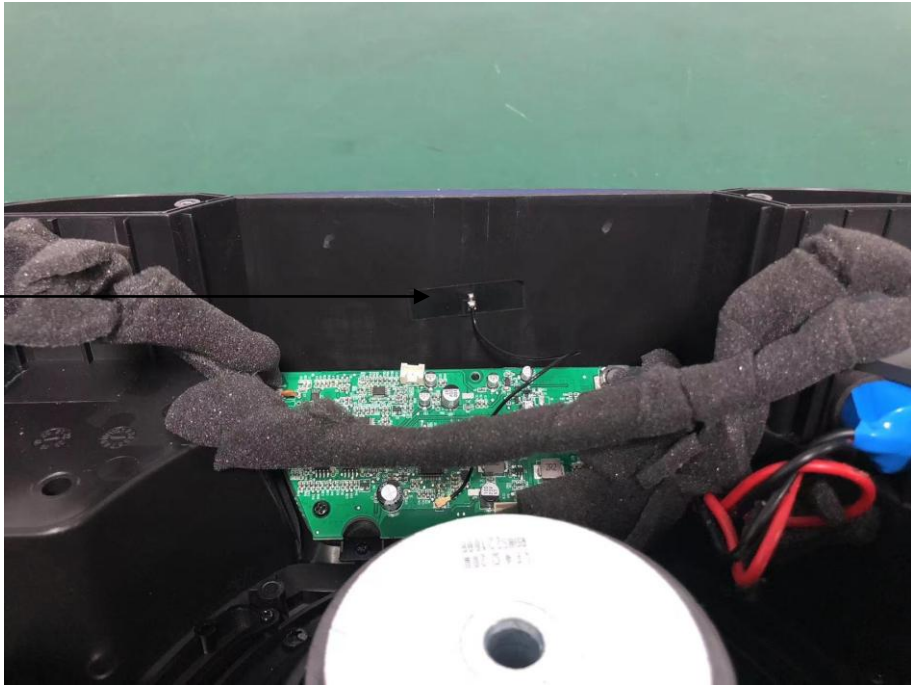


Internal Photos
M/N: EXPLORER™ EXPRESS

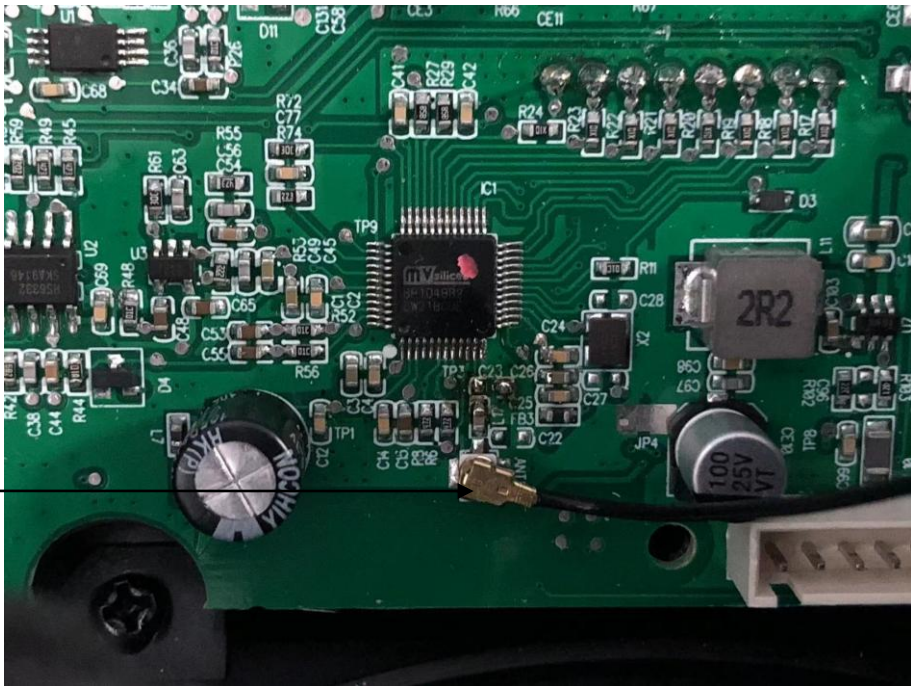


Internal Photos
M/N: EXPLORER™ EXPRESS

Bluetooth
Antenna



Bluetooth
Antenna
Connector



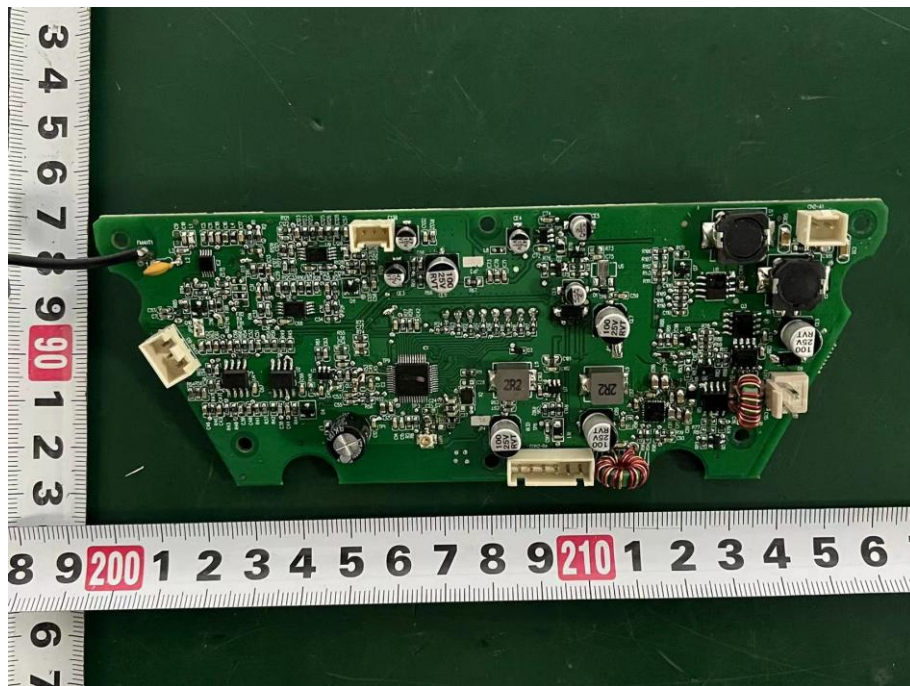
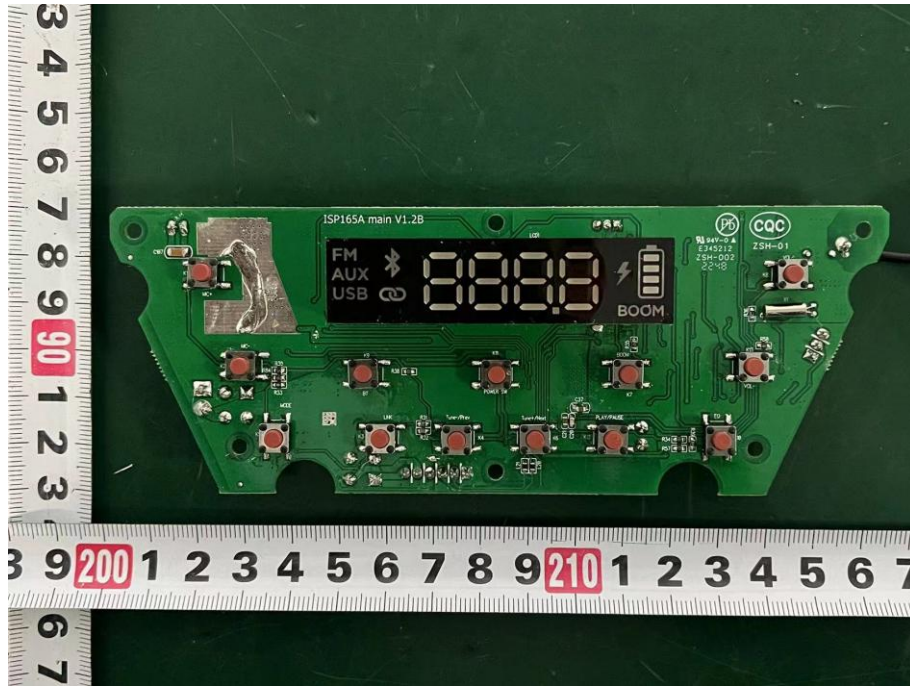
Internal Photos
M/N: EXPLORER™ EXPRESS



Internal Photos
M/N: EXPLORER™ EXPRESS



Internal Photos
M/N: EXPLORER™ EXPRESS



End of Test Report