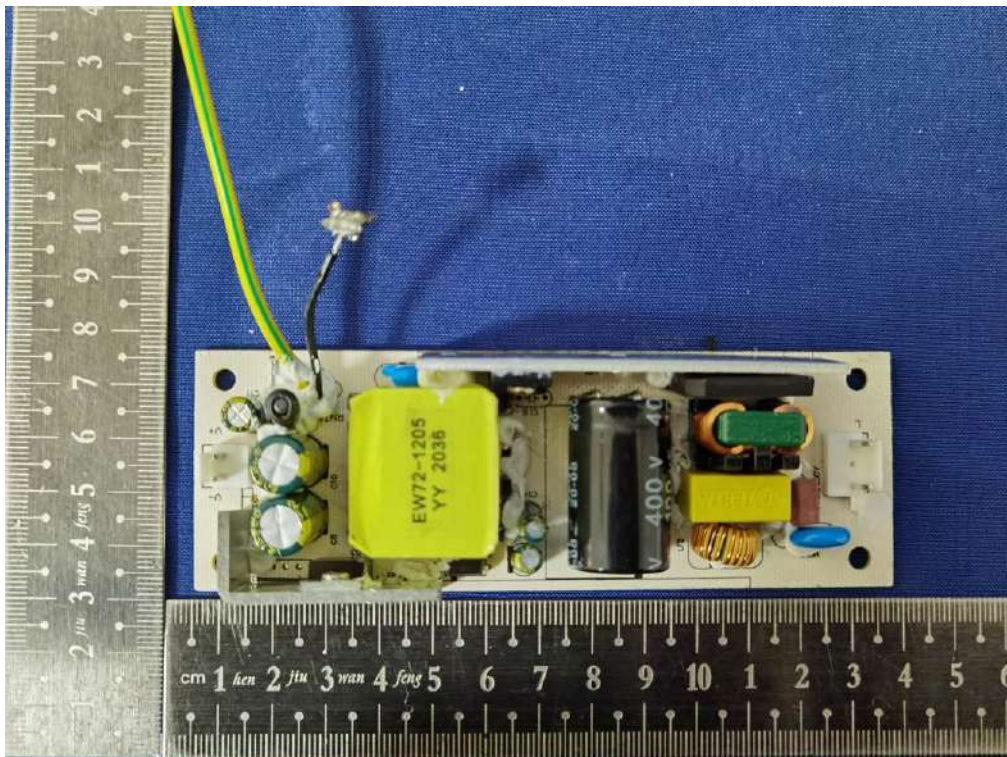


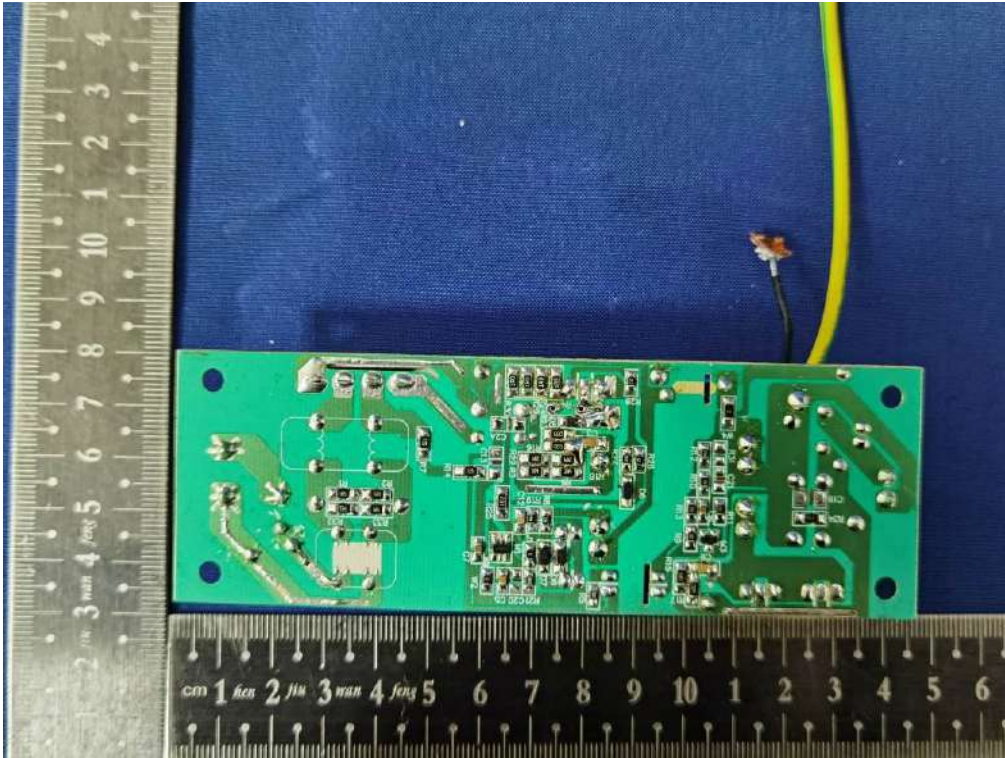
Switching power supply board: EW72-160410-L (DONGGUAN CHENGUAN ELECTRONIC TECHNOLOGY CO., LTD):



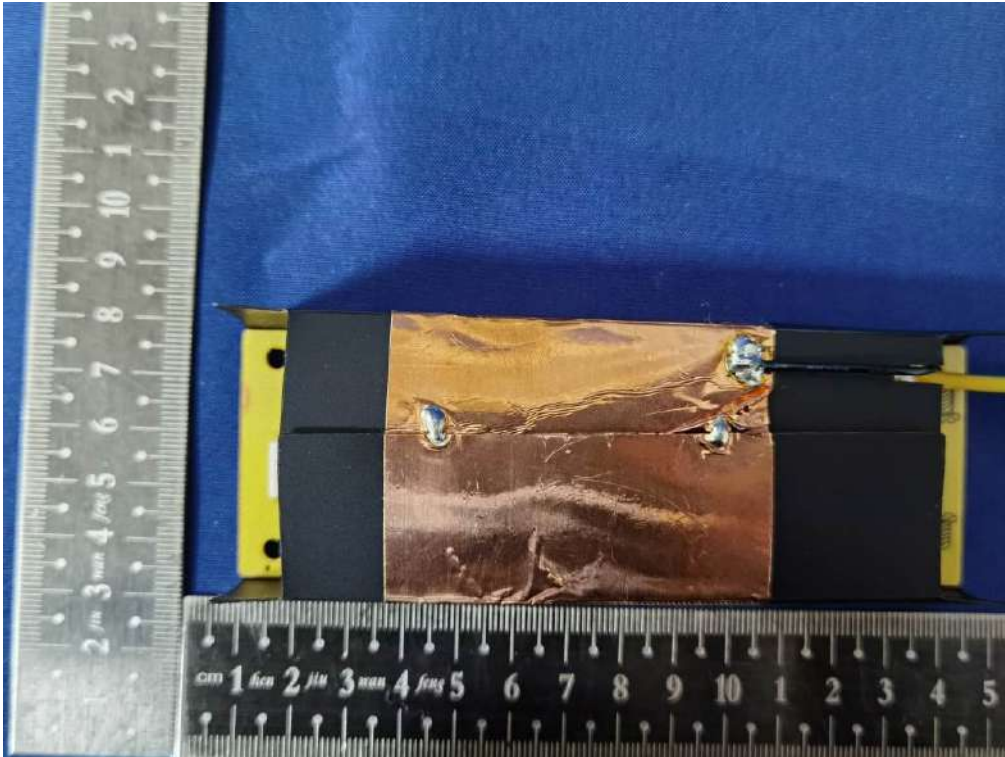


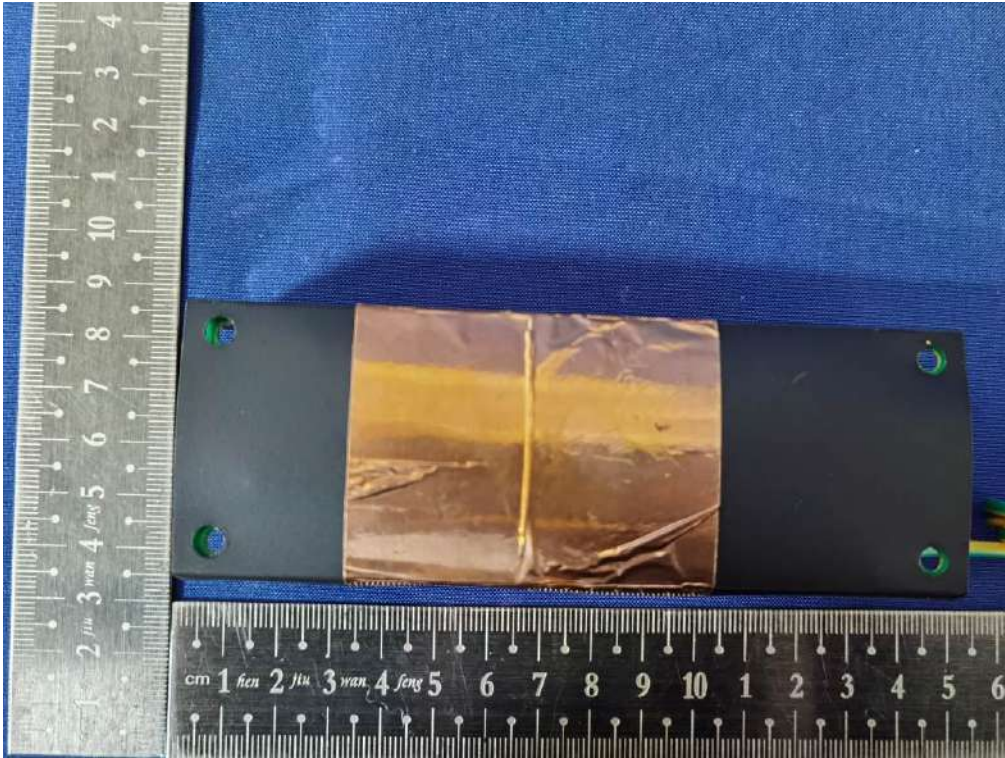
Switching power supply board: EW72-160410-L (DONGGUAN CHENGUAN ELECTRONIC TECHNOLOGY CO., LTD):





Switching power supply board: GO160041 (Shenzhen Sunlight Electronic Co., Ltd):





Switching power supply board: GO160041 (Shenzhen Sunlight Electronic Co., Ltd):





Battery Package: CB7-12 (JiangXi HengLi Battery Technology Co., Ltd)



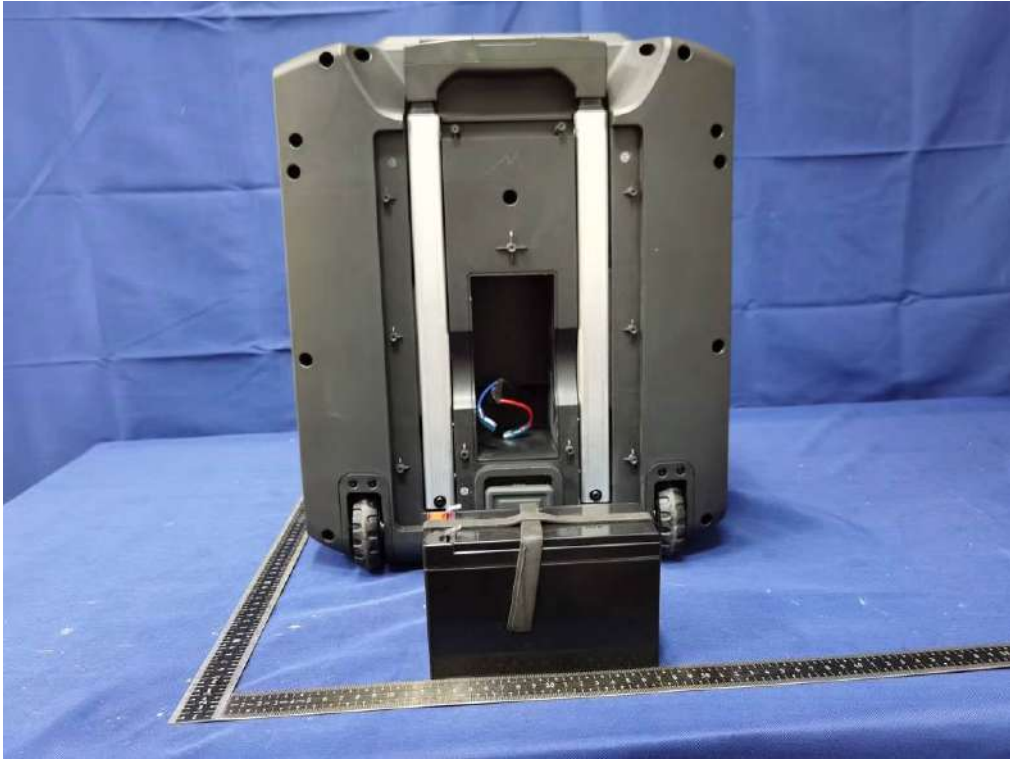
Battery Package: GS12V7AH (FLYING POWER (JIANGXI) CO LTD)





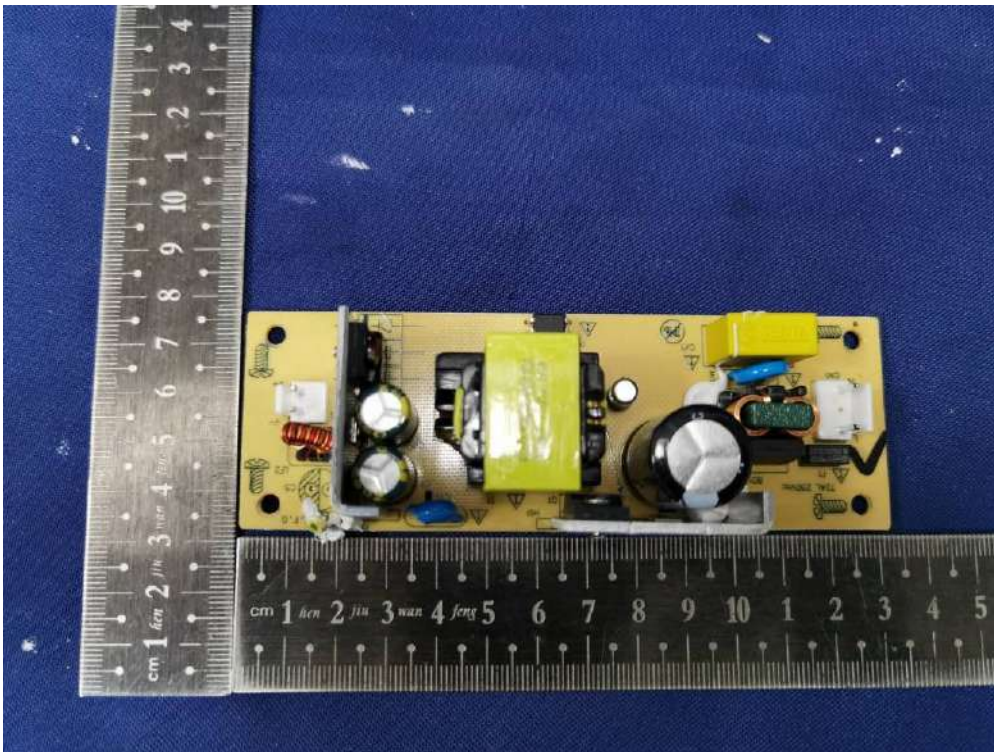
New LED driver IC IC: TM1638_V1.3:



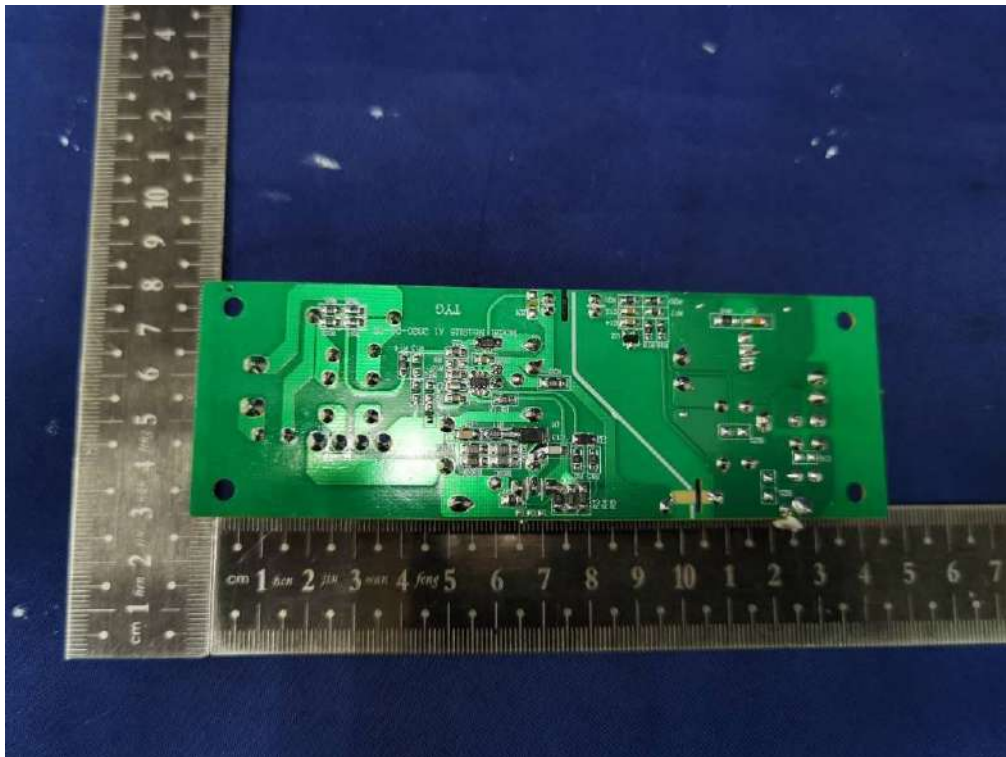




Switching power supply board: GO160041 (Shenzhen Sunlight Electronic Co., Ltd):



Switching power supply board: GO160041 (Shenzhen Sunlight Electronic Co., Ltd):

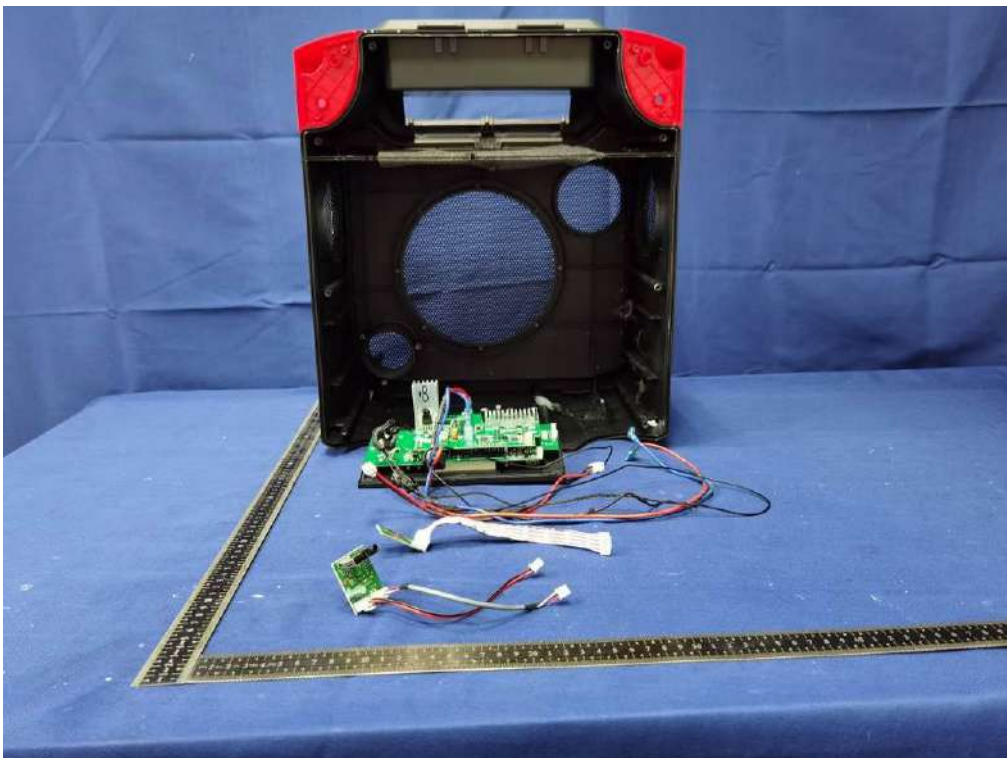
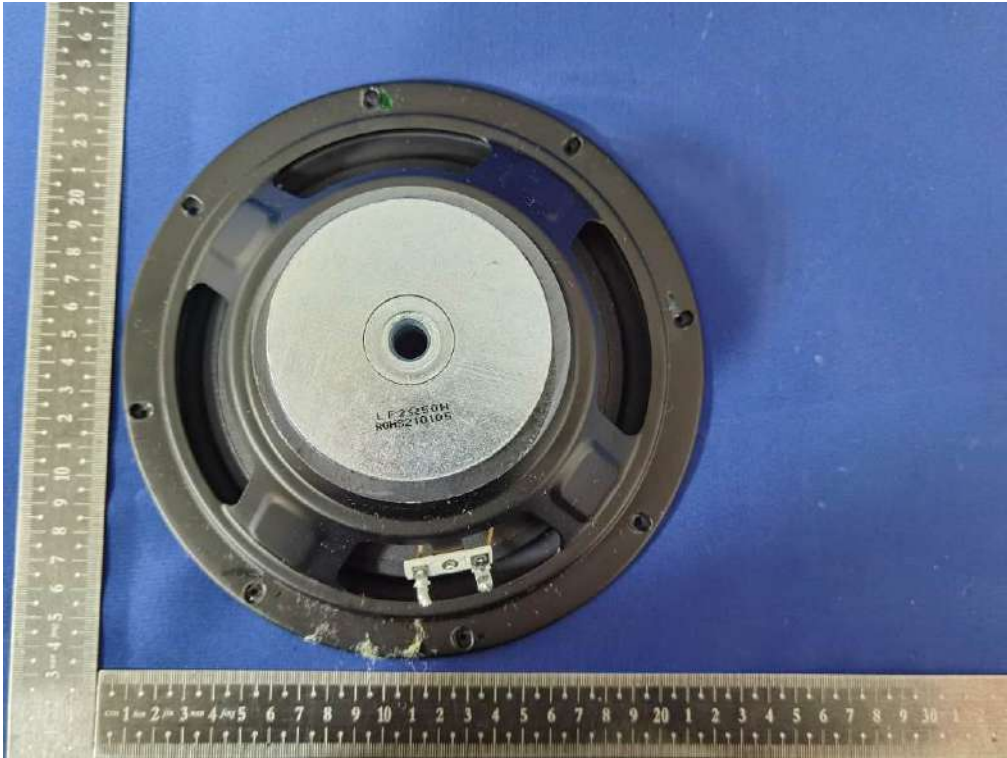


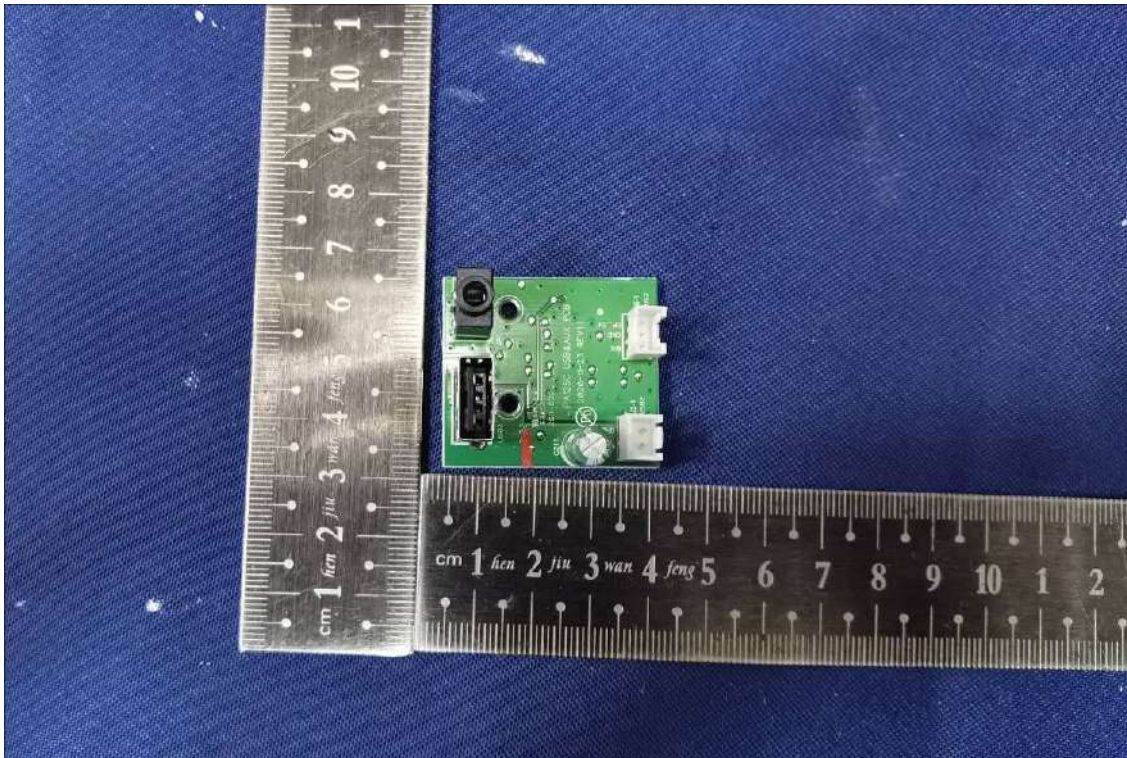
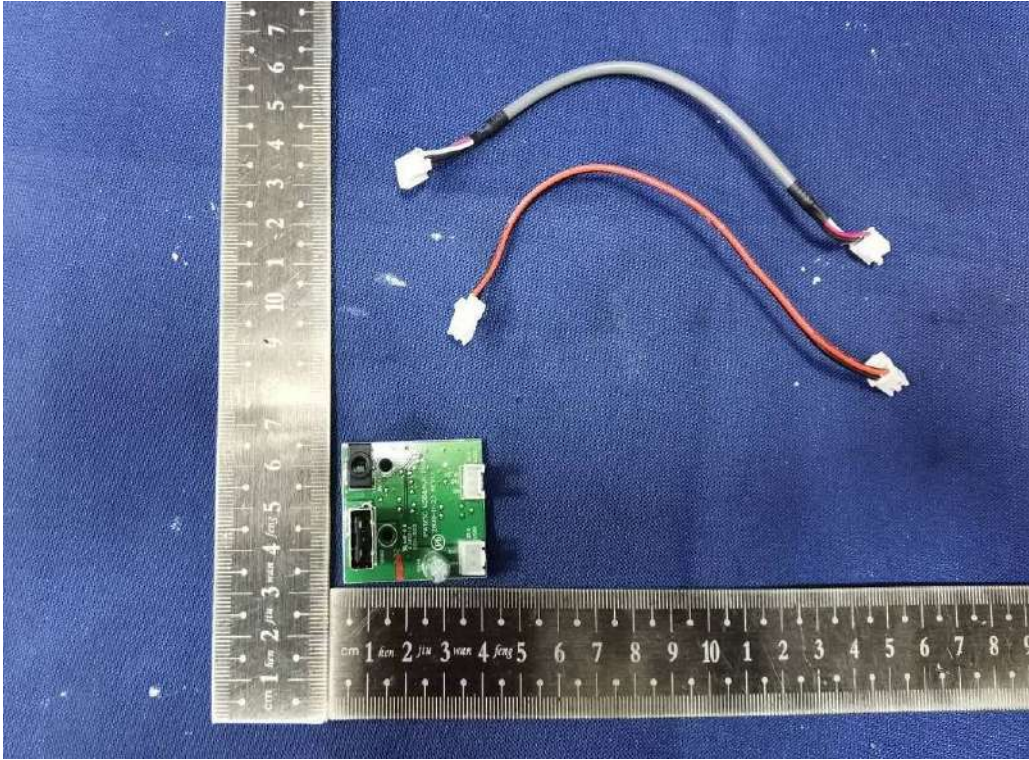
Battery Package: CB7-12 (JiangXi HengLi Battery Technology Co., Ltd)

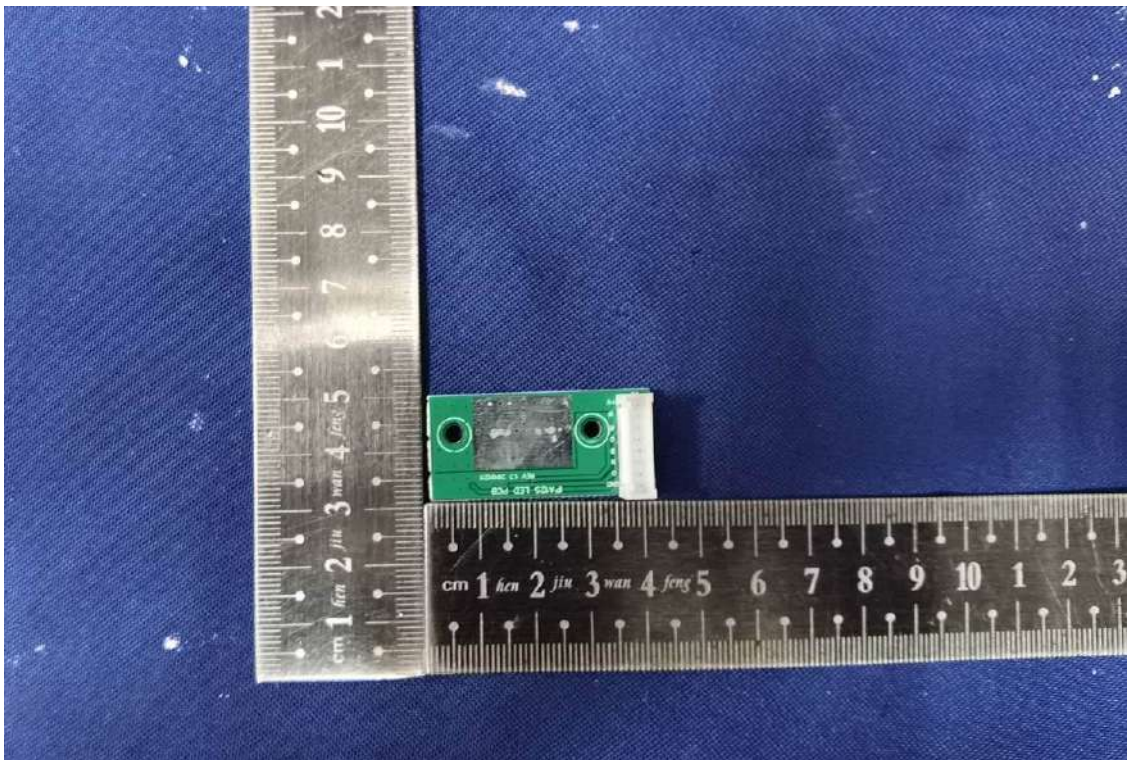
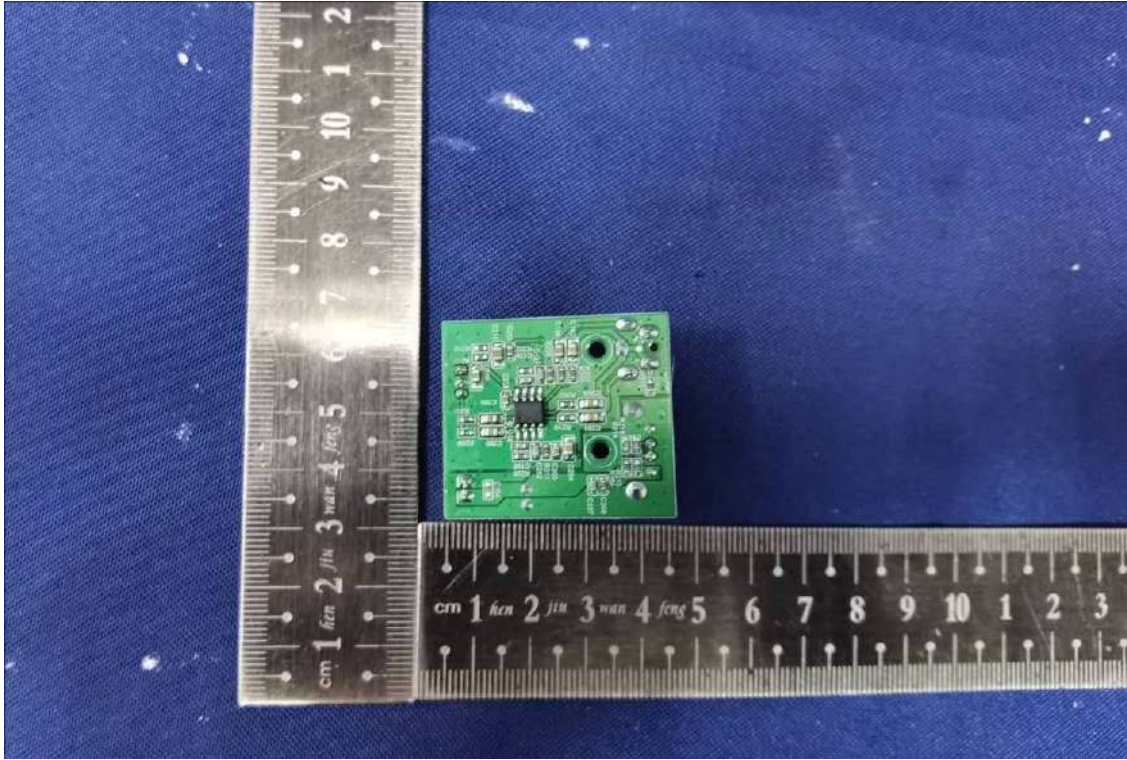


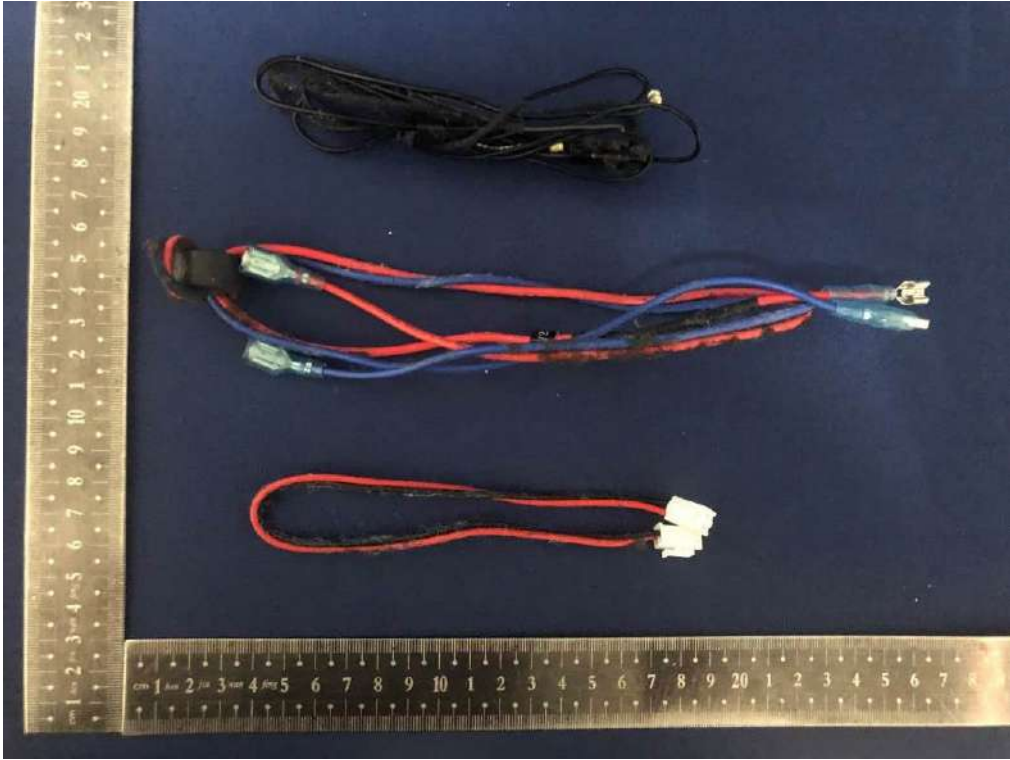






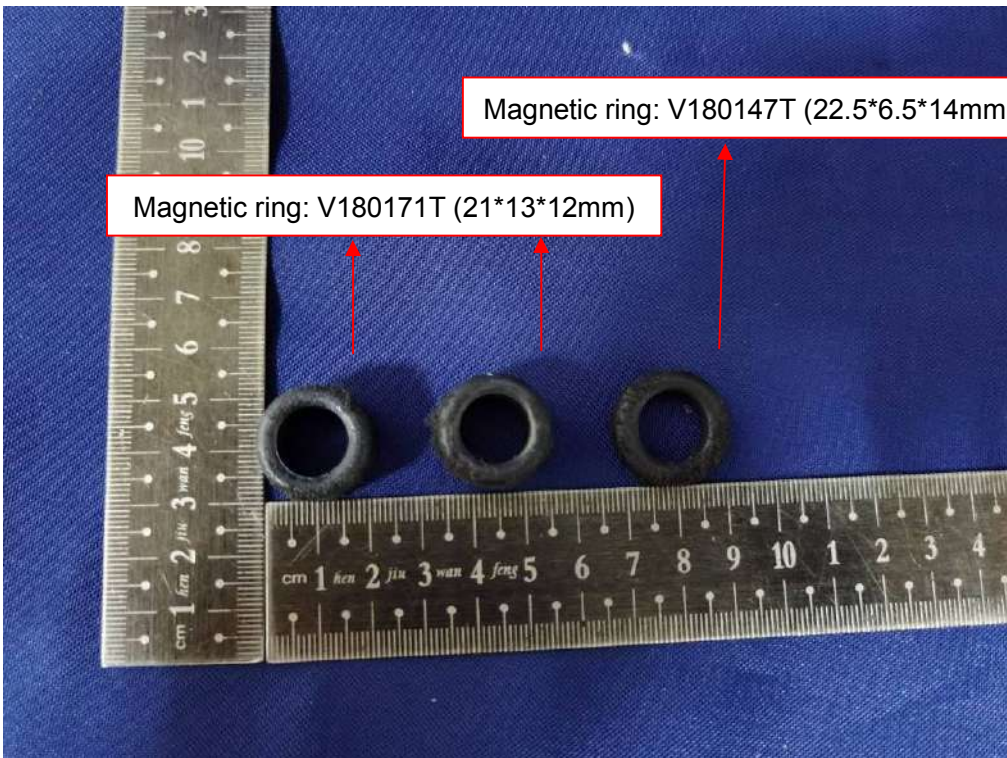


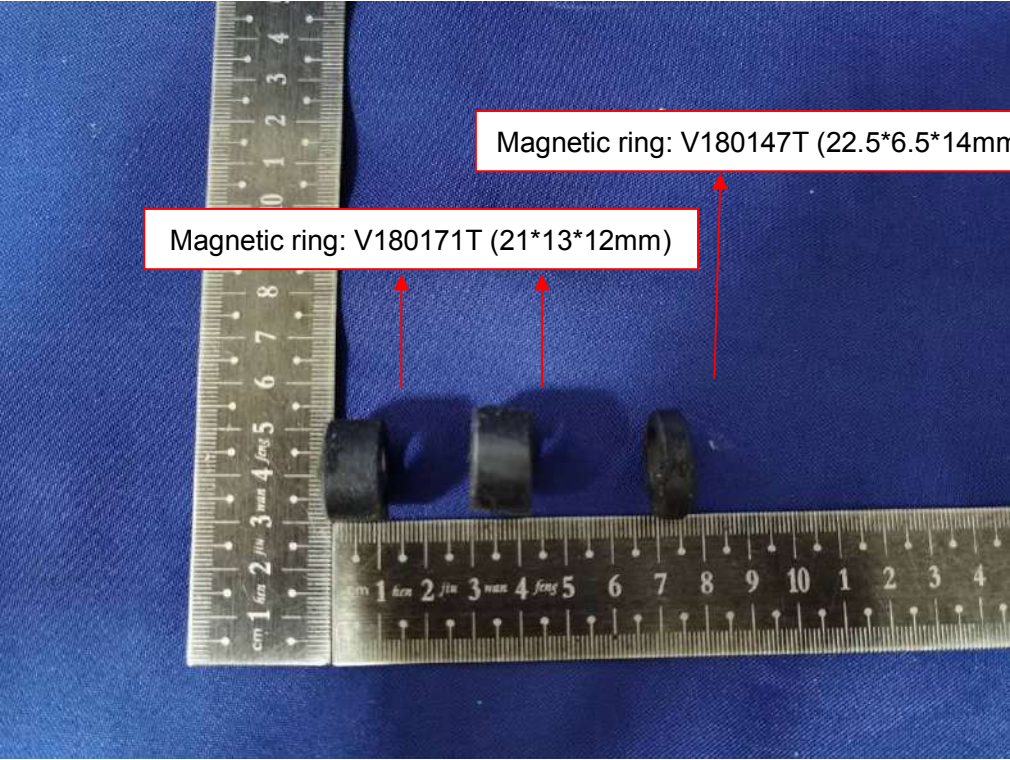












Magnetic ring: V180147T (22.5*6.5*14mm)

Magnetic ring: V180171T (21*13*12mm)

