

## CARE AND WARNING

**WARNING:** Changes or modifications to this unit not expressly approved by the party responsible for compliance could void the user's authority to operate the equipment.

**NOTE:** This equipment has been tested and found to comply with the limits for a Class A digital device, pursuant to part 15 of the FCC Rules. These limits are designed to provide reasonable protection against harmful interference when the equipment is operated in a commercial environment. This equipment generates, uses, and can radiate radio frequency energy and, if not installed and used in accordance with the instruction manual, may cause harmful interference to radio communications. Operation of this equipment in a residential area is likely to cause harmful interference in which case the user will be required to correct the interference at his own expense.

This device complies with Part 15 of the FCC Rules. Operation is subject to the following two conditions: (1) This device may not cause harmful interference, and (2) this device must accept any interference received, including interference that may cause undesired operation.

## Europe – EU Declaration of Conformity

This device complies with the essential requirements of the Radio Equipment Directive (2014/53/EU). The following test methods have been applied in order to prove presumption of conformity with the essential requirements of the Radio Equipment Directive This equipment is compliant with Class A of EN55032. In a residential environment this equipment may cause radio interference.



Correct Disposal of this product. This marking indicates that this product should not be disposed with other household wastes throughout the EU. To prevent possible harm to the environment or human health from uncontrolled waste disposal, recycle it responsibly to promote the sustainable reuse of material resources. To return your used device, please use the return and collection systems or contact the retailer where the product was purchased. They can take this product for environmental safe recycling.

"FCC & CE RF Radiation Exposure Statement Caution: To maintain compliance with the FCC & CE's RF exposure guidelines, place the product at least 20cm from nearby persons."

The suitable temperature for the Room Booking Panel and Accessory is 0°C-40°C.

Adapter with ferrite must be used with this equipment to ensure compliance with the Class A FCC limits.

Power adapter information:

Model No.: WB-24J12R

INPUT: 100-240V~50/60Hz

OUTPUT: 12V = 2.0A

Installation height :<2M

## CAUTION



Risk of explosion if the battery is replaced by an incorrect type.  
Wait one-half hour after switching off before handling parts.

- Replacement of a battery with an incorrect type that can be defeat a safeguard;
- Disposal of a battery into fire or a hot oven, or mechanically crushing or cutting of a battery, that can result in an explosion;
- Leaving a battery in an extremely high temperature surrounding environment that can result in an explosion or the leakage of flammable liquid or gas;
- A battery subjected to extremely low air pressure that may result in an explosion or the leakage of flammable liquid or gas.



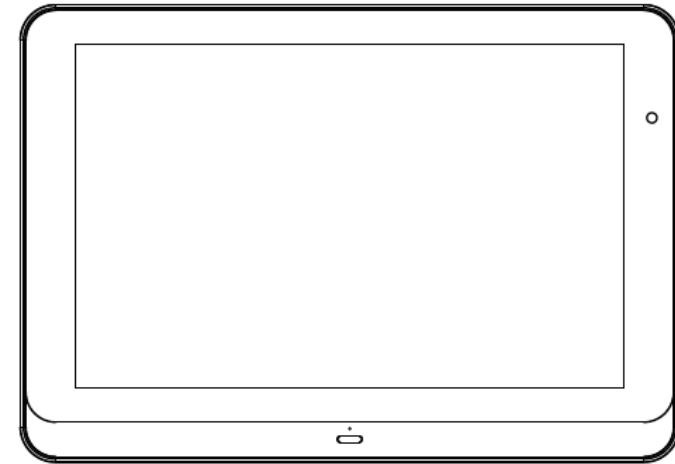
QED ADVANCED SYSTEMS LIMITED

22 Bridgwater Court Oldmixon Crescent, North Somerset, BS24 9AY, UK

# Quick Start Guide

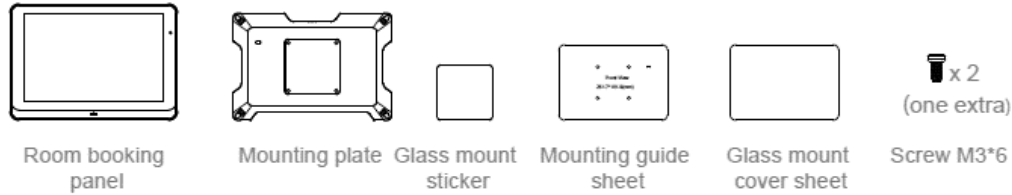
This quick guide will help you go through installation quickly

## AURA-X

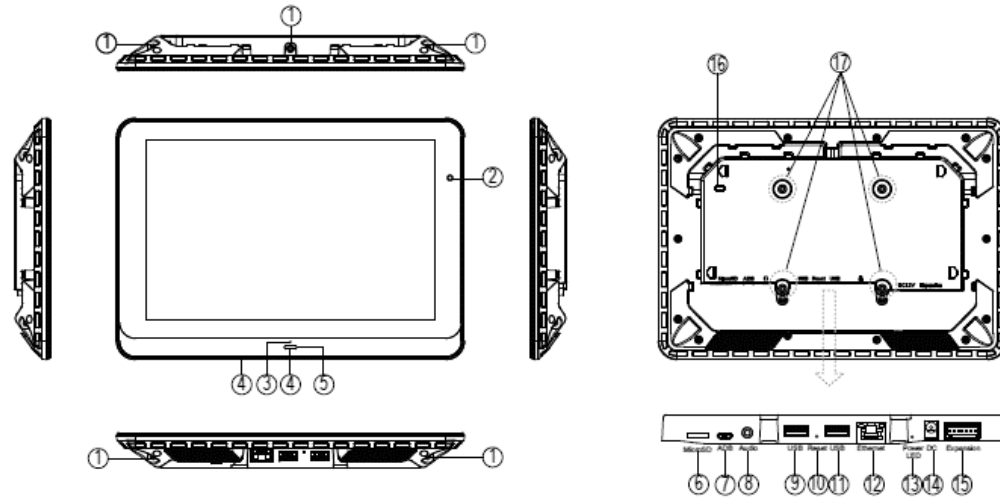


The color and the appearance may differ depending on the product, and the specifications are subject to change without prior notice to improve the performance.

## Box Content



## Port Connections

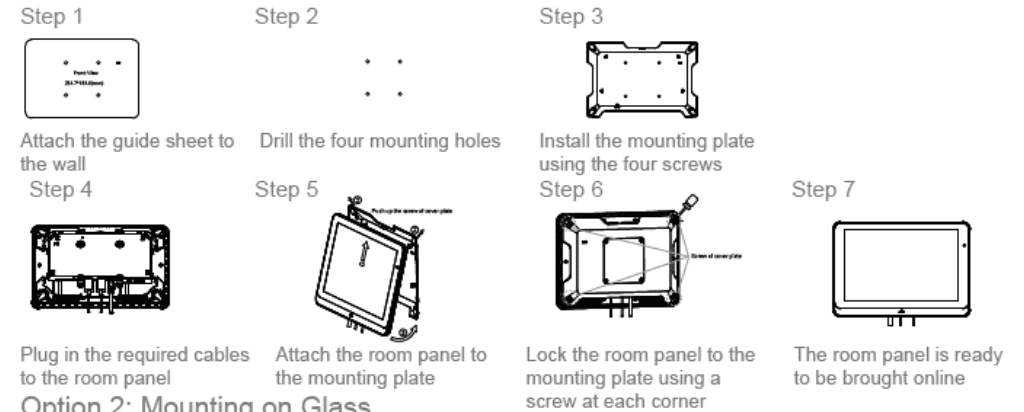


- |                   |                     |                 |                        |
|-------------------|---------------------|-----------------|------------------------|
| ① Screw Hole      | ⑥ MicroSD card slot | ⑩ Reset         | ⑭ 12V DC power         |
| ② Camera*         | ⑦ ADB               | ⑪ USB port      | ⑮ Expansion*           |
| ③ Microphone*     | ⑧ 3.5mm audio       | ⑫ Ethernet RJ45 | ⑯ Kensington Lock      |
| ④ LED             | ⑨ USB port          | ⑬ Power LED     | ⑰ VESA mount (MIS-D75) |
| ⑤ NFC/RFID reader |                     |                 | Screw spec: M4         |

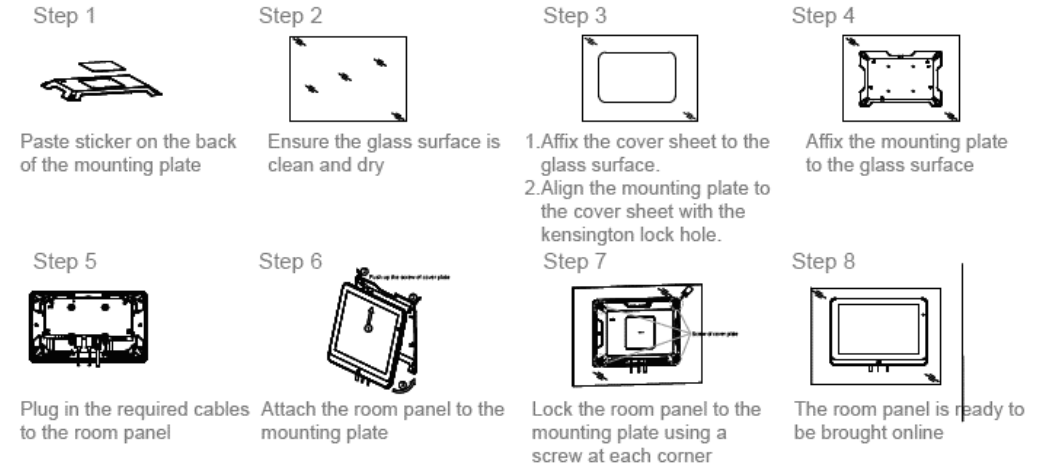
\* The functions marked with "\*" only appear on certain models.

## Mounting and Installation

### Option 1: Flush Wall Mount



### Option 2: Mounting on Glass



### Option 3: Mounting close to a window frame

