

WARNING:

- This product is to be installed or used in accordance with electrical codes and regulations.
- For indoor use only. Do not use in wet locations.
- If you are unsure any part of these instructions, consult an electrician.
- Save this instructions sheet. It contains important technical data along with testing and troubleshooting information which will be useful after installation is complete.
- This switch are not compatible with standard 3-way or 4-way switches.
- Do not disassemble the product, or make repairs yourself. You run the risk of electric shock and voiding the limited warranty. If you need service, please contact the after sales services.
- The load power rating limit of the device as below Specification sheet, do not exceed the limit.

Package Contents

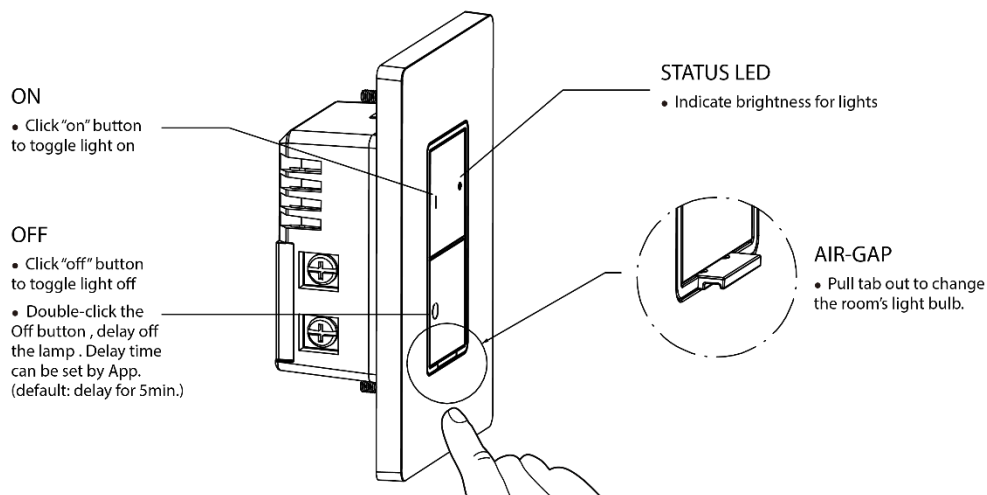
Smart Switch *1

Quick start guide*1

Accessories package*1

Product Description

The switch turns your light smart by enabling you to control them through the smart home APP on your phone at or away from home.



Specification

Model number	HSA11FWB
Power supply:	120V~, 60Hz
Maximum load:	Incandescent 600W, CFL/LED 300W
Operational temperature:	0-40°C
Storage Temperature Range	-20-60°C
Humidity	0-85%,non condensing
Radio protocol:	2.4G, IEEE 802.11b/g/n
Range:	About 40m indoors (line of sight)

Feature list:

Function	Description
Remote Control	Turn your light on and off from anywhere using the mobile app.
Schedule	Set specific times for your light to turn on/off as setting connected lighting turn on at 19:00 every Monday. Or like setting lights to come on at dusk or turn off at sunrise.
Countdown	Set a countdown timer to have switch turn off automatically. As setting after 30 minutes turn off automatically.
Delay Off	Double-click the Off button (interval is less than 500ms), delay of the lamp. The delay time can be set in the App. If it is not set, the factory default is delay the switch off for 5min. Take the latest user operation as the highest priority, and close the delay-off function at the same time.
Timer	Set a timer to have switch turn on or off automatically. As setting after 30 minutes turn on automatically.
Power Memory	Re-Power, switch restore the state that before power off.

Installing switch by itself or with multi-gang

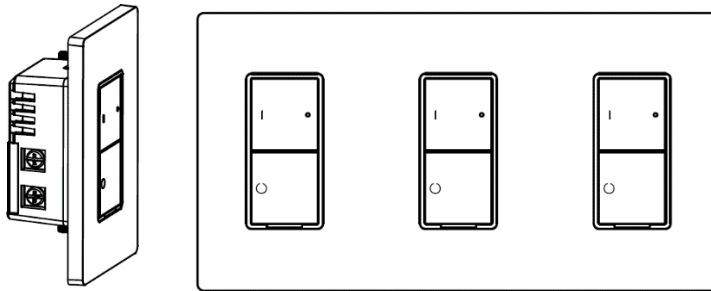
If installing the switch in a single gang application, proceed with **Product install introduction**. If installing the switch in a multi-gang

application, proceed with follow:

Multi-gang application

In multi-switch installations, the reduction of the switch's capacity may be required. Refer to the chart for maximum load per switch.

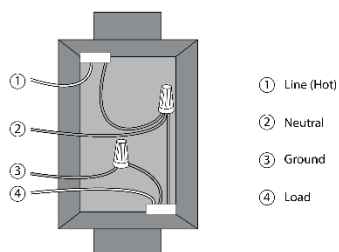
Note: No derating is required for LED or CFL bulb applications.

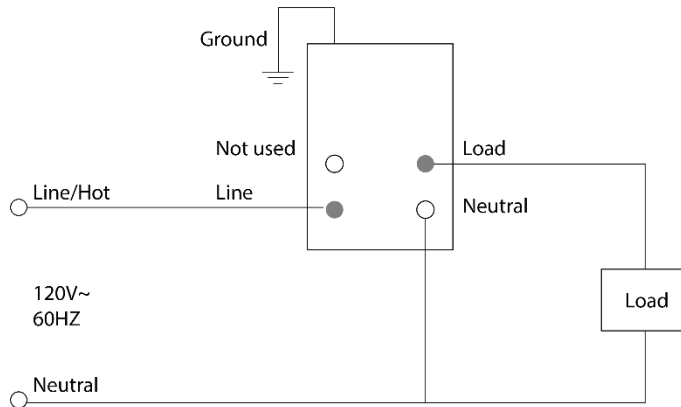
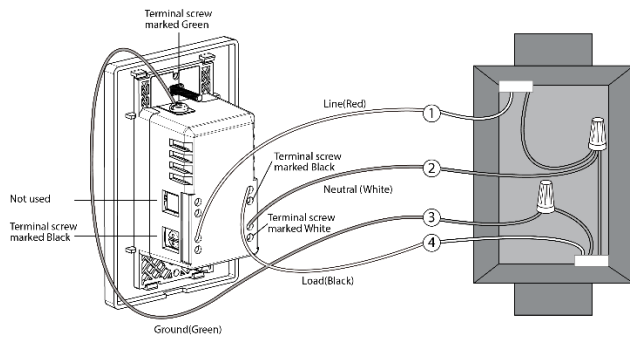


Maximum Load Per Switch for Multi-gang			
Load	Single	Two-Gang	Three-Gang
incand	600W	500W	500W

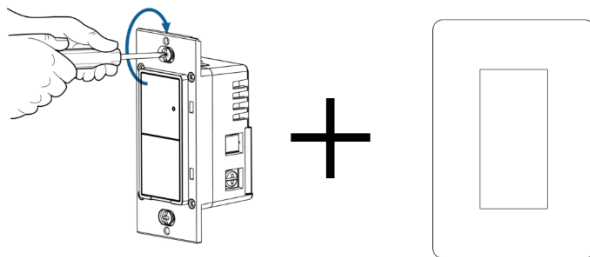
Product install introduction

1. Turn power off at the circuit breaker
2. Remove the existing switch and connect the new switch





3. Mount the Switch using the screws and attach faceplate.



4. Turn power ON at circuit breaker

5. Quick start guide

Step 1:

Download the LinKind App on App Store or Google Play.

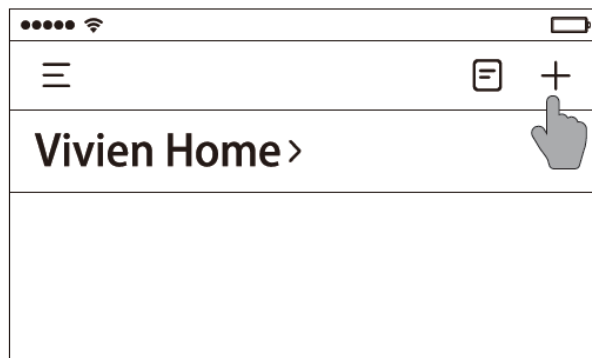


Step 2:

Create an account and sign in.

Step 3:

- Ensure the switch is properly wired and power is applied
- Upon initial power-up the LED indicator will green and orange scrolling blinking to show the accessory is ready to configured
- If the LED indicator is no longer green and orange scrolling blinking when you are ready to add the accessory, press “on” and “off” button for 5 seconds until the LED indicator keeps in red and release the button
- Press ‘+’ button to add the device.



Step 4:

Follow the instructions on App.

LED Indicator

Under normal working state. LED indicator is solid green— turn on, LED indicator is off —Turn off.

Indicator Status	Behavior
Green and Orange scrolling blinking	To be configured status.
Quick Blinking Orange	Connecting to the network
Solid Green	Connected to the network, and then switch is turned on. LED indicator keeps in green status for 3s and then turns off. If switch is not turned on.
Solid Red	Connected failed. LED indicator keeps in red status for 3s and then turns off.

Off	The Smart switch is turned off and the switch is not configured
Solid Green	The Smart switch is turned on
Triple Blink Orange	When the countdown starts, triple blink orange, and light on or off LED indicator according to the actual situation

Connect to the network

Status	Behavior
To be configured status	LED indicator green and orange scrolling blinking. Remark: Powering on switch, is ready to start switch network configuration
Connecting to the network	LED indicator quick blinking orange statue.
Connected to the network	LED indicator keeps in green status for 3s and then turns off. If switch is not turned on.
Connected failed.	LED indicator keeps in red status for 3s and then turns off. Remark: while connected failed, led indicator turn off, to reset the smart switch to factory settings.
Factory default (reset)	Hold "on" and "off" button for a total 5 seconds, and LED solid red, release the button and it will reset. After a total 5 seconds, switch get into to be configured statue.

Troubleshooting

Problems	Possible cause
Lights Flickering	Lamp has a bad connection
	Wires not secured firmly under terminal screws of switch
Light does not turn ON and LED indicator does not turn ON	Circuit breaker or fuse has tripped.
	Lamp is burned out.
	Lamp Neutral connection is not wired.
Light can be turn ON and LED indicator does not turn ON	The switch have not be configured, reset switch and connect into network.
Remote does not operate	Confirm switch is connected to the network

lights	Ensure wiring is correct
--------	--------------------------

FCC Statement

This device complies with Part 15 of the FCC Rules. Operation is subject to the following two conditions:

- (1) This device may not cause harmful interference.
- (2) This device must accept any interference received, including interference that may cause undesired operation.

Note: The grantee is not responsible for any changes or modifications not expressly approved by the party responsible for compliance. Such modifications could void the user's authority to operate the equipment.

Note: This equipment has been tested and found to comply with the limits for a Class B digital device, pursuant to part 15 of the FCC Rules. These limits are designed to provide reasonable protection against harmful interference in a residential installation.

This equipment generates uses and can radiate radio frequency energy and, if not installed and used in accordance with the instructions, may cause harmful interference to radio communications. However, there is no guarantee that interference will not occur in a particular installation. If this equipment does cause harmful interference to radio or television reception, which can be determined by turning the equipment off and on, the user is encouraged to try to correct the interference by one or more of the following measures:

- Reorient or relocate the receiving antenna.
- Increase the separation between the equipment and receiver.
- Connect the equipment into an outlet on a circuit different from that to which the receiver is connected.
- Consult the dealer or an experienced radio/TV technician for help

RF Exposure Statement

This equipment complies with FCC radiation exposure limits set forth for an uncontrolled environment. This equipment should be installed and operated with minimum distance of 20 cm between the radiator and your body.