



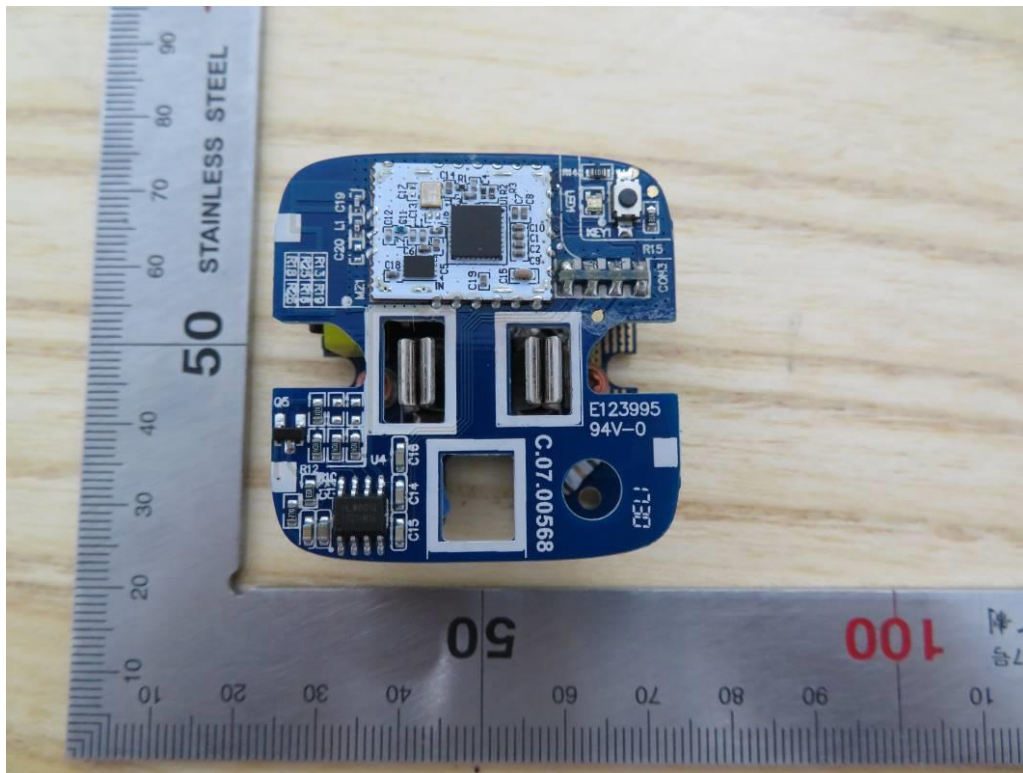
## **Appendix II**

### **Internal Photographs**

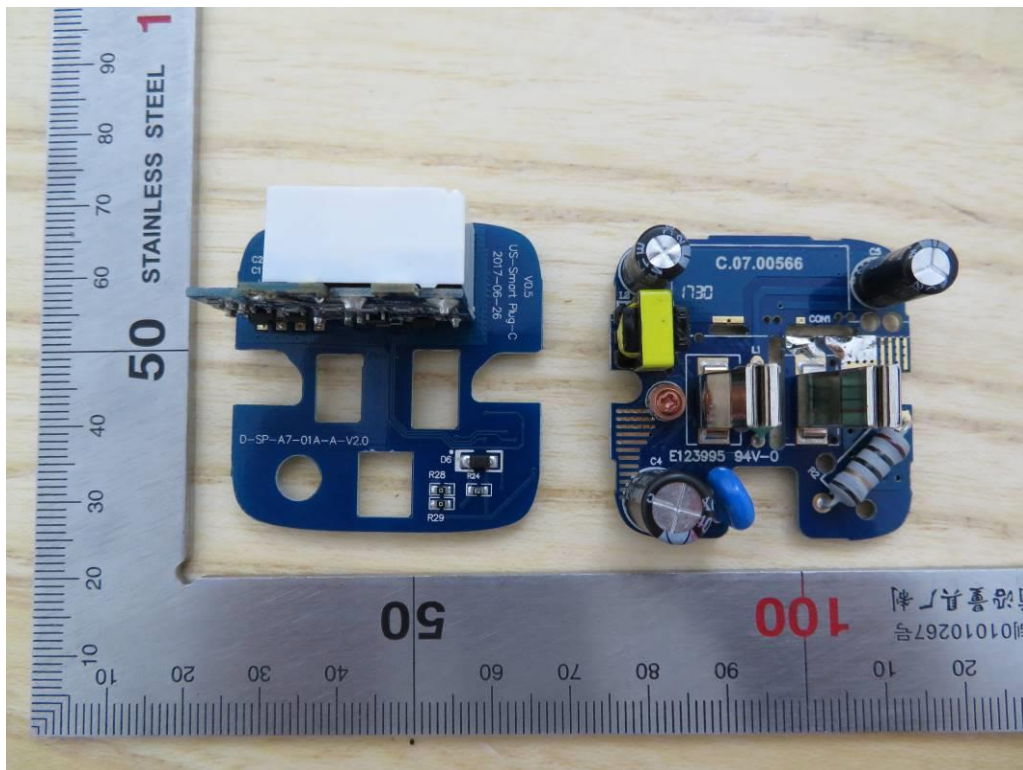
## Open View of EUT



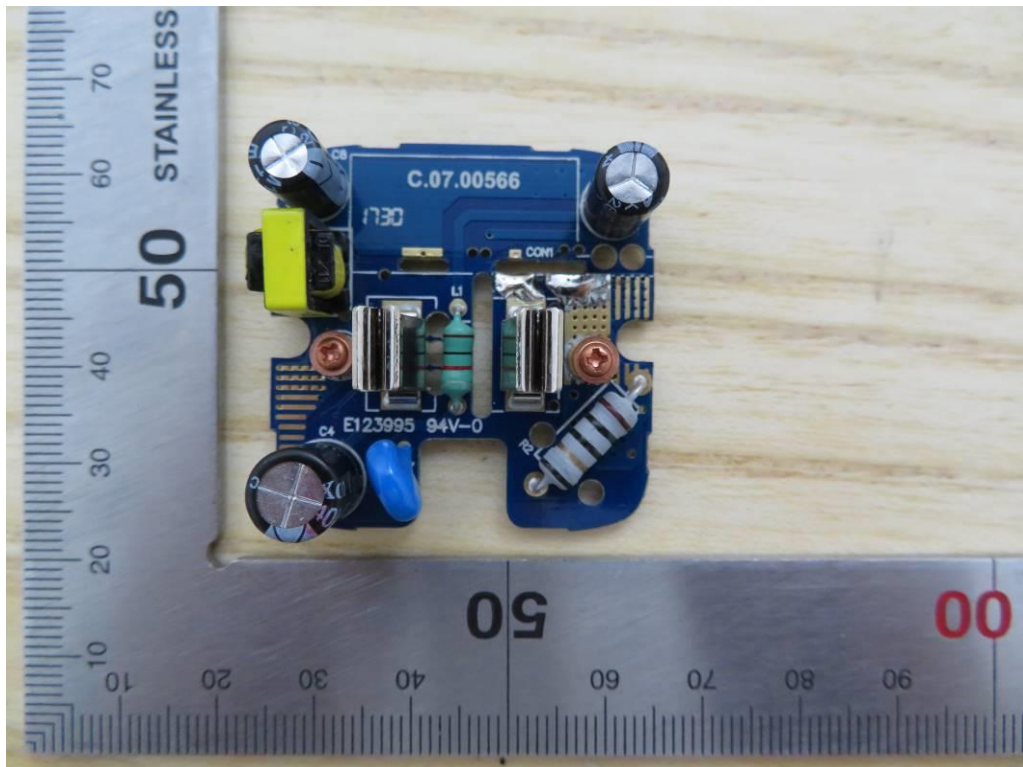
## Internal View of EUT-1



Internal View of EUT-2



Internal View of EUT-3





The image shows a custom-designed blue PCB with a complex, multi-ported shape. It is placed next to a stainless steel ruler for scale. The ruler has markings in both inches (0 to 10) and centimeters (0 to 100). The PCB features several labels and components:

- Top Left:** A small white label with the text "V0.3", "US-Smart Plug-C", and "2017-06-26".
- Top Right:** A small white label with the text "D-SP-A7-01A-A-V2.0".
- Bottom Left:** A small white label with a table of headers:
 

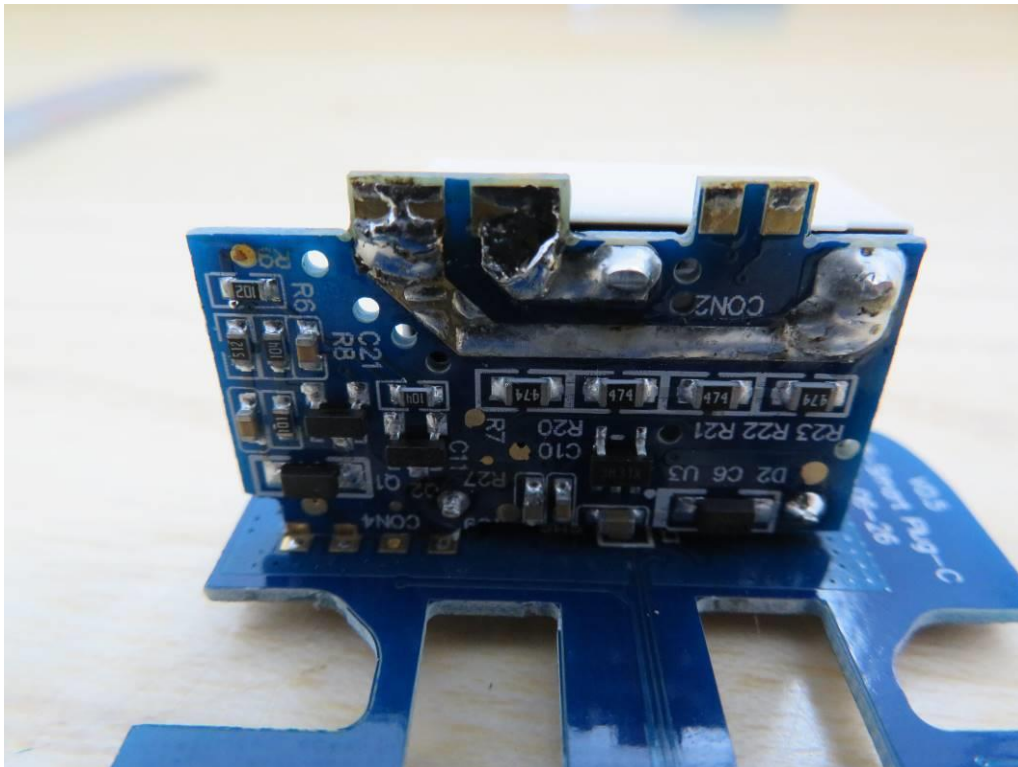
EXP	MISC
TX	RX
- Bottom Center:** A small white label with the text "2017-06-26".
- Bottom Right:** A small white label with the text "D-SP-A7-01A-A-V2.0".

The PCB also has several circular and rectangular cutouts, and various electronic components like resistors and capacitors are visible on its surface.

Internal View of EUT-6



Internal View of EUT-7



## Detail View of Chip

