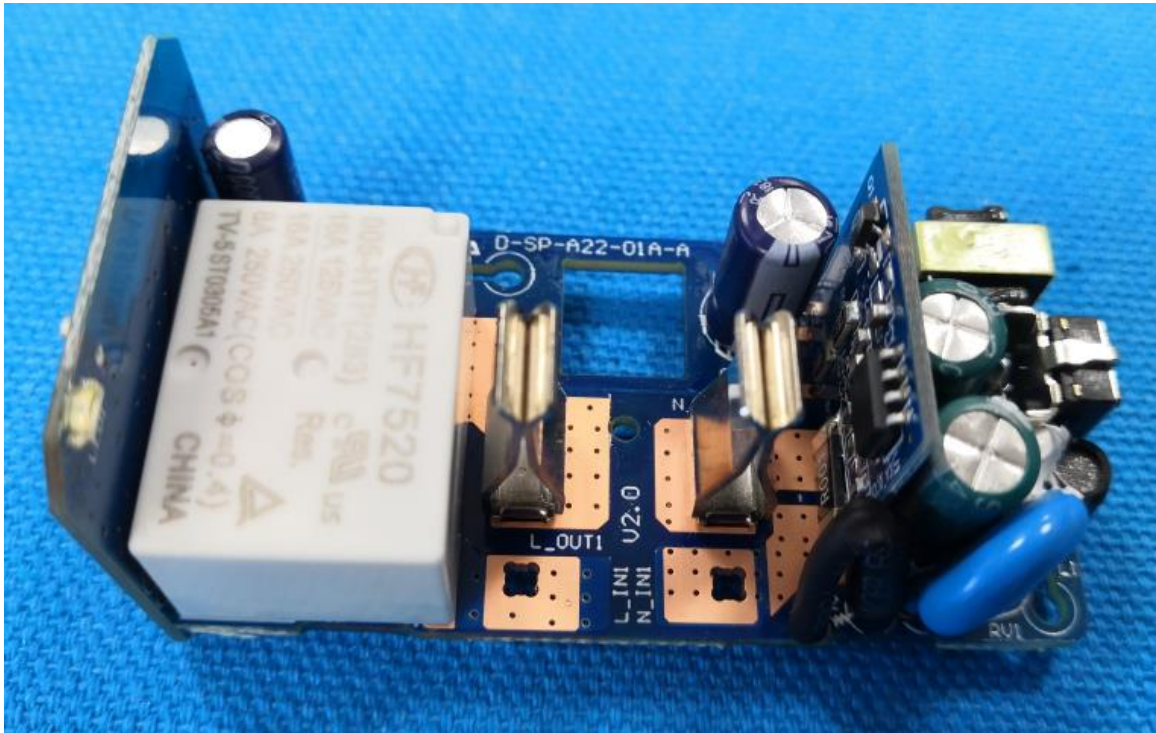
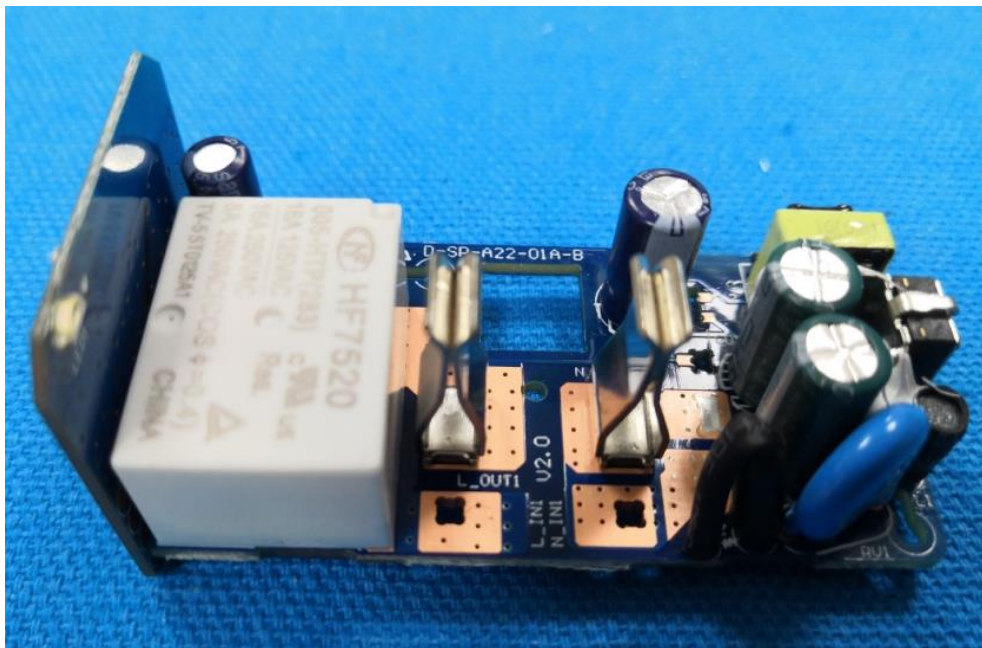
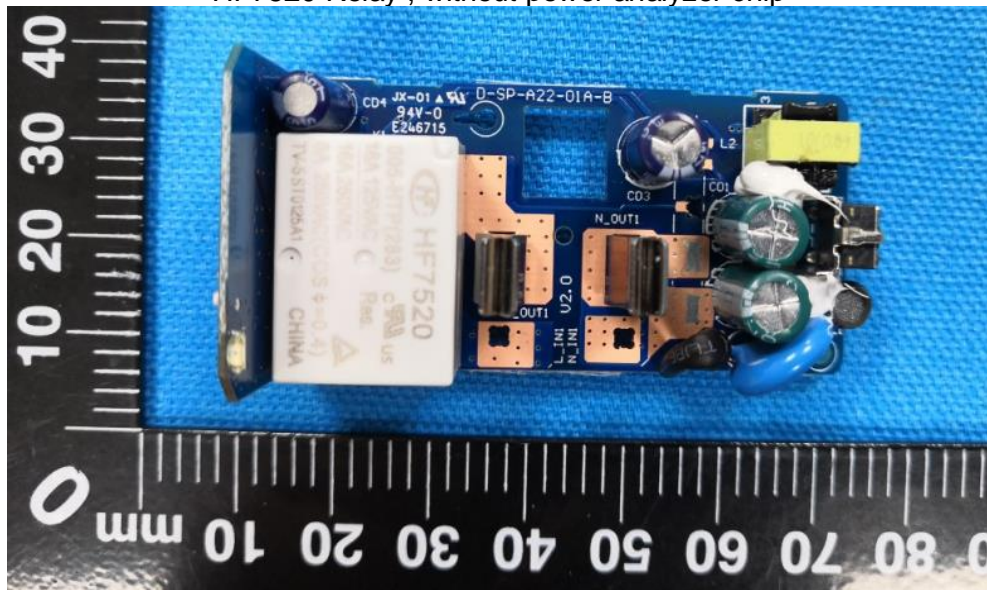


## **Appendix II**

### **Internal Photographs**

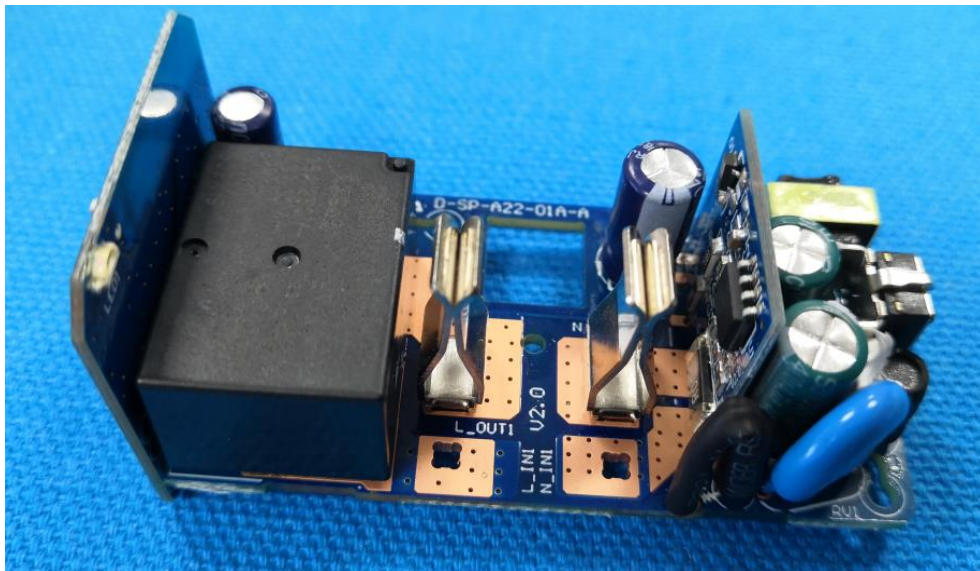
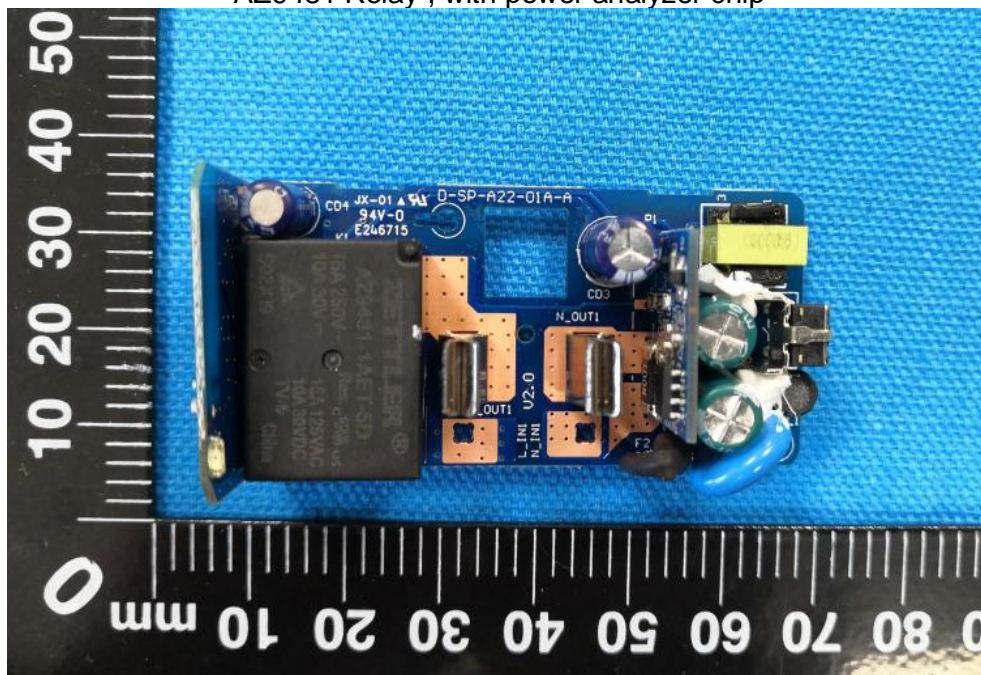


HF7520 Relay , without power analyzer chip

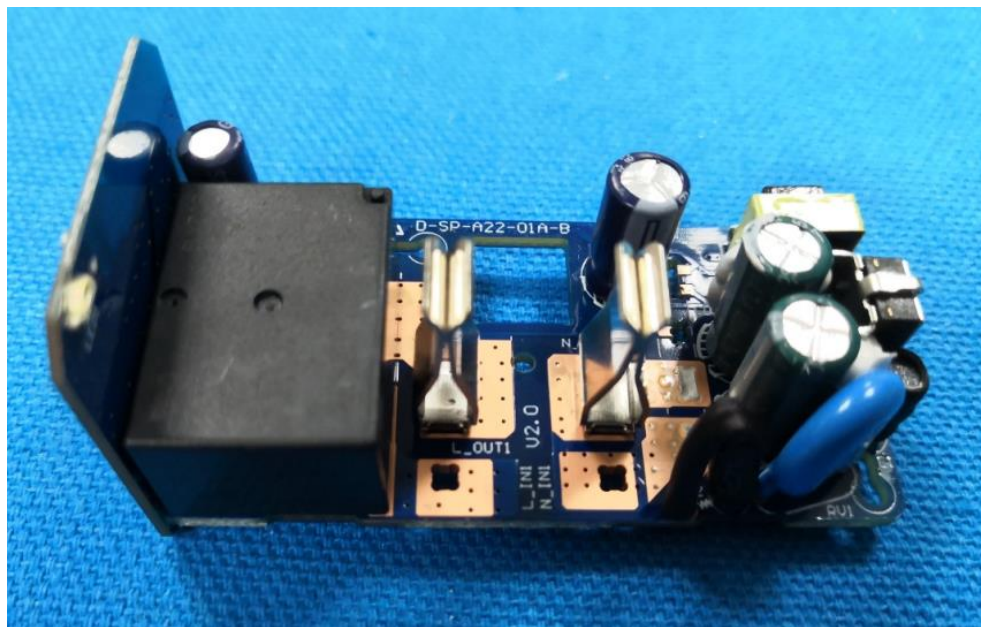
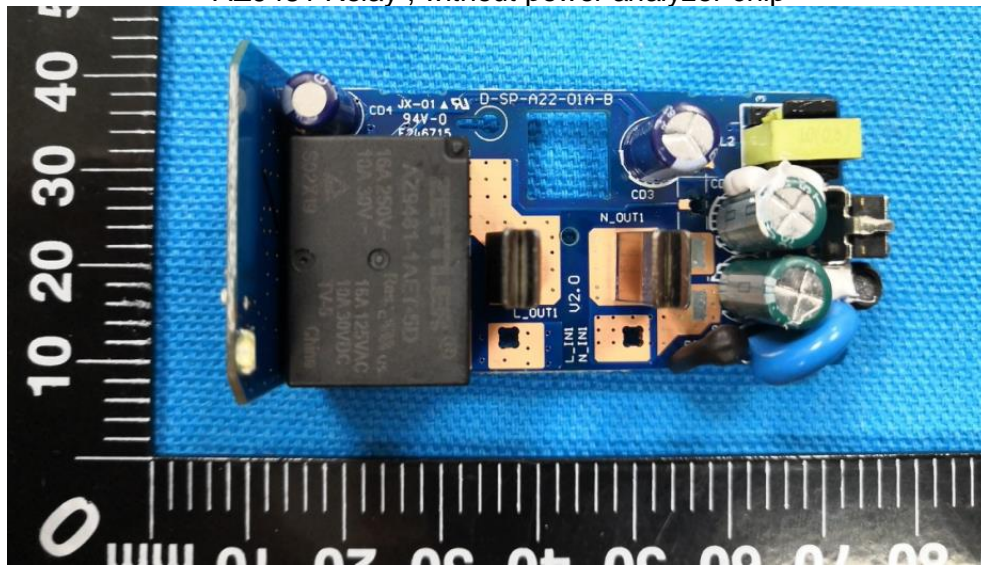




AZ9481 Relay , with power analyzer chip

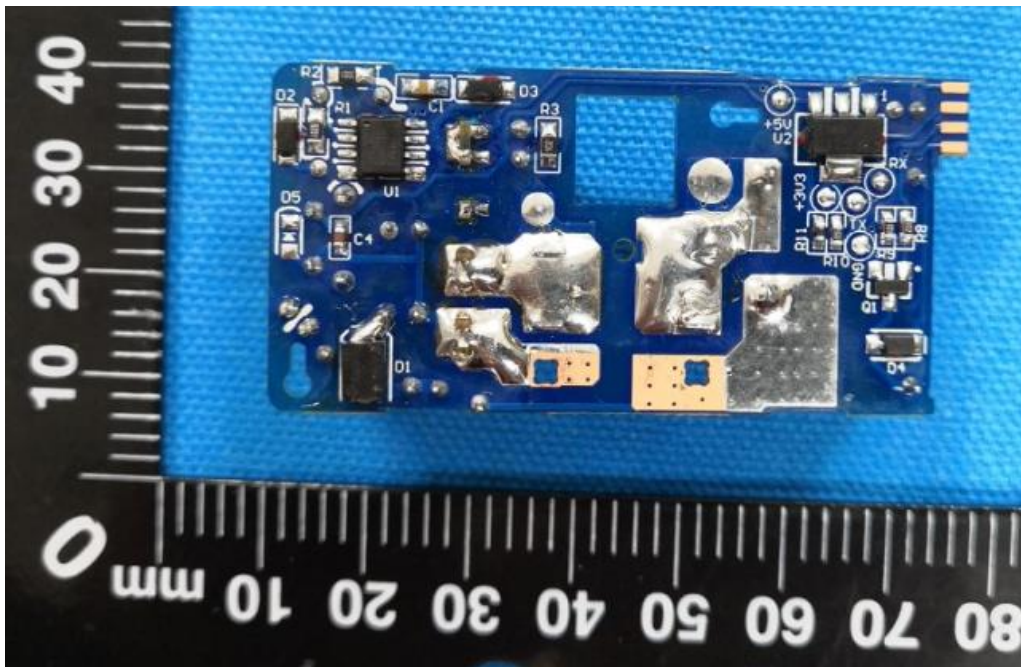


AZ9481 Relay , without power analyzer chip

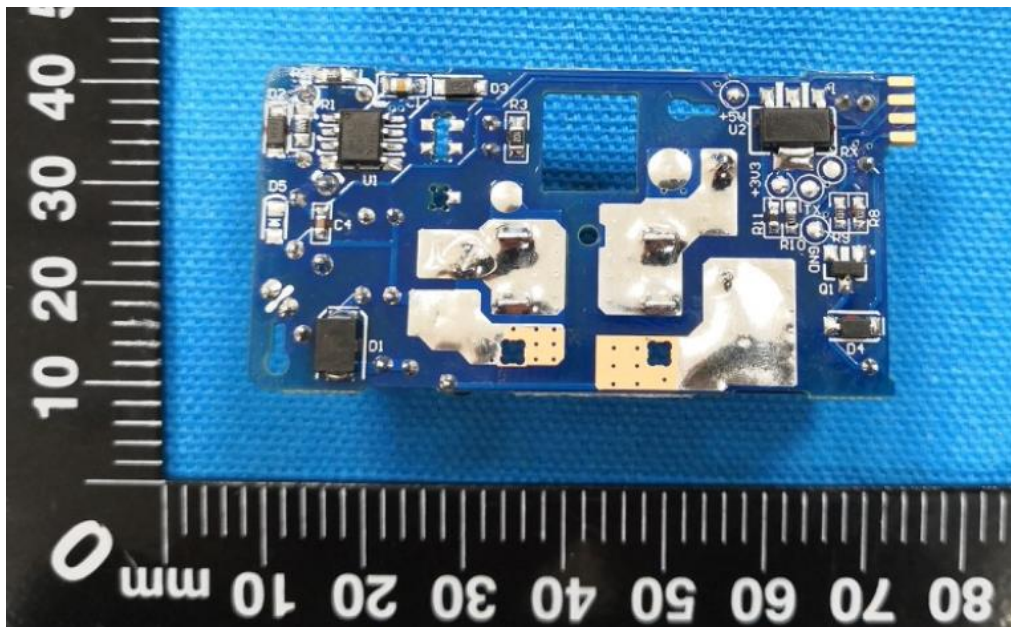




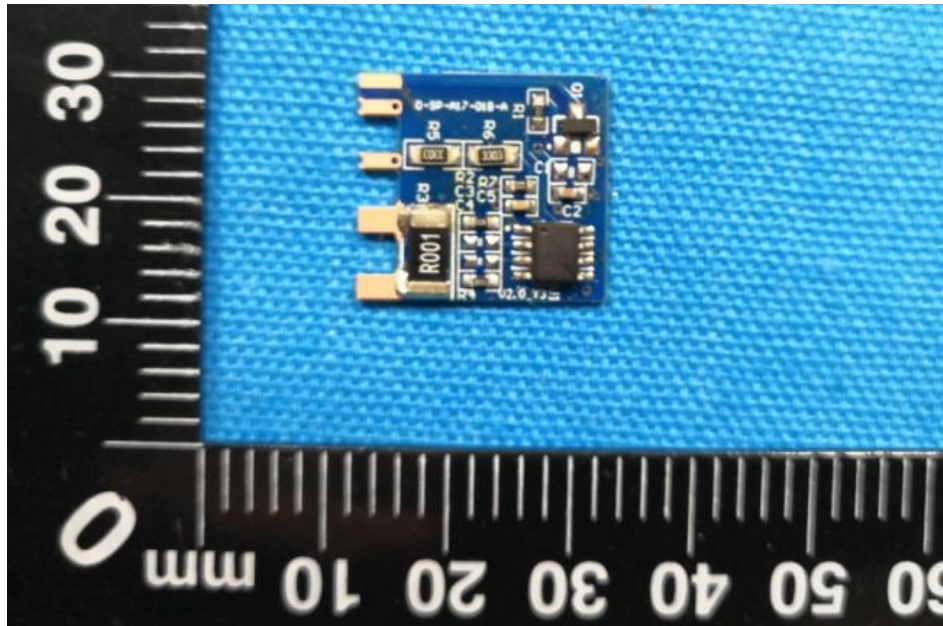
Detail View of EUT-1(with power analyzer chip)



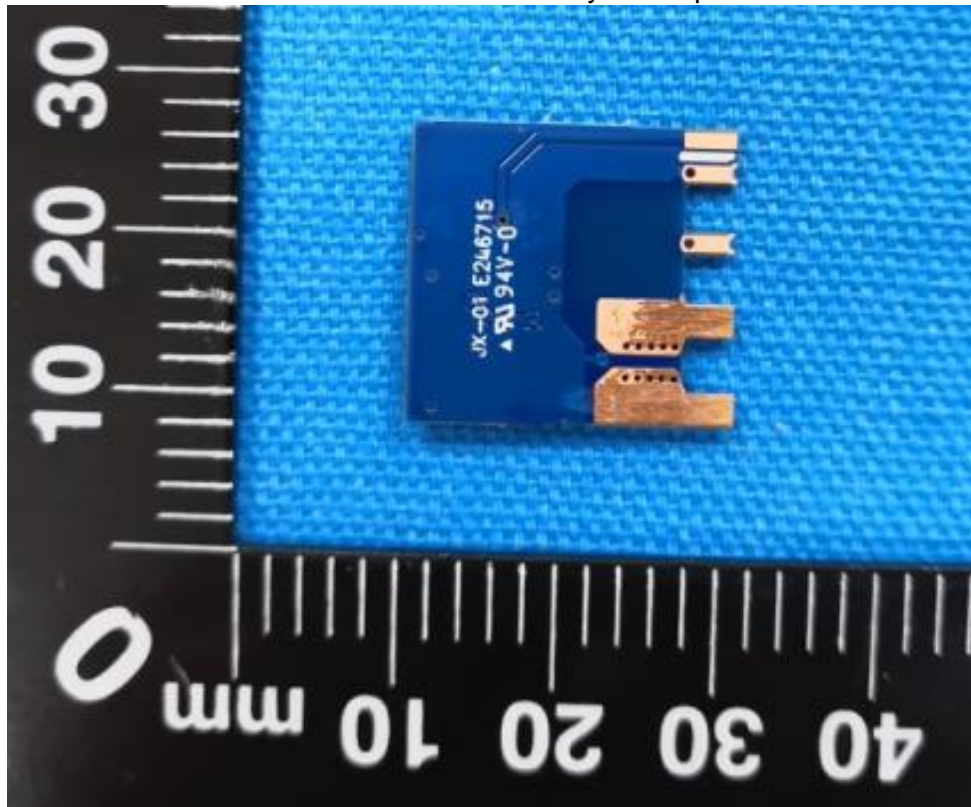
Detail View of EUT-2(without power analyzer chip)



Detail View of Power Analyzer Chip-1



Detail View of Power Analyzer Chip-2





A photograph of a blue PCB with a white microcontroller (U1) and various components. A red arrow points to a small antenna structure labeled "Antenna" in a blue box. A ruler is visible on the left and bottom for scale.